

**ADDENDUM ONE
AVONDALE YOUTH AND FAMILY DEVELOPMENT CENTER
ACOUSTIC INSULATION
CONTRACT NO. Y-15-008-205
CITY OF CHATTANOOGA, TENNESSEE**

The following changes shall be made to the Contract Documents, Specifications, and Drawings:

I. Rigid Acoustic Panel Submittal Data

- A. Acoustic insulation panels required for this project are to match the existing rigid acoustic panels in use in the adjacent Library space in the Avondale YFD Center. The original approved submittals **and the subsequent revised data** is included in this Addendum for reference.
- B. The rigid acoustic panels supplied in the Library space were MBI Colorsonix Acoustic Baffles, in Opal #394. Both 2" thick panels and 1.5" thick panels were supplied. 1.5" thick panels were ceiling mounted and 2" panels were wall mounted.

August 10, 2020

/s/ Justin C. Holland, Administrator
City of Chattanooga
Department of Public Works

ORIGINAL SUBMITTAL INFORMATION

J & J Contractors, Inc.
 700 W. Main Street
 CHATTANOOGA, TN 37402
 (423) 265-3233

LETTER OF TRANSMITTAL

TO: H&K Architects
1216 E Main St
Chattanooga TN 37408

DATE	10/12/2018
ATTENTION	Chris Dufresne
Re: Avondale Youth & Family Development Center	
Chattanooga TN	
City Contract No. Y-15-008-201	
Architect's Project No. 16-057	

WE ARE SENDING YOU Enclosed Under separate cover via E-mail the following items:

Submittals Prints Plans Samples Specifications

Copy of letter Change order _____

COPIES	DATE	NO.	DESCRIPTION
1	10/12/2018	79	Submittal 0984336.01-Sound Absorbing Suspended Rigid Baffles - Product Data and Samples
1	10/12/2018	79	Submittal 0984337.01-Sound Absorbing Suspended Wave Panels- Product Data and Samples
			Filed seperately

THESE ARE TRANSMITTED as checked below:

- | | | |
|--------------------------------------------------|---------------------------------------------------|---------------------------------------------------------------|
| <input checked="" type="checkbox"/> For approval | <input type="checkbox"/> Approved as submitted | <input type="checkbox"/> Resubmit _____ copies for approval |
| <input type="checkbox"/> For your use | <input type="checkbox"/> Approved as noted | <input type="checkbox"/> Submit _____ copies for distribution |
| <input type="checkbox"/> As requested | <input type="checkbox"/> Returned for corrections | <input type="checkbox"/> Return _____ corrected prints |
| <input type="checkbox"/> For review and comment | | |

REMARKS

Please find the enclosed submittals for both the rigid baffles in the Library/Tech Lab and the catinary banners/baffles in the Multi-Purpose Room.

COPY TO File

If enclosures are not as noted, kindly notify us at once.

SIGNED: _____

Skip Smith, Project Manager

No Exceptions Exceptions Noted
 Rejected Revise & Resubmit

This submittal has been reviewed for general compliance with the plans and specifications. This review and the response indicated does not relieve subcontractor/supplier of any contractual responsibilities including furnishing all items required by the documents and the confirmation of all quantities and dimensions.

Project: Avondale Youth & Family Development Center
 Chattanooga, TN
 Project# 16-057
 Contract #Y-15-008-201

Submittal No. 79 – Submittal #0984336.01 and 0984337.01

Specification Section: 0984336 – Sound Absorbing Suspended Rigid Baffles and 0984337-Sound Absorbing Wave Panels

Reviewed By: Skip Smith

Date: 10/12/18

Architect's Review Stamp

<input type="checkbox"/> Approved <input checked="" type="checkbox"/> Approved as noted Fabrication and / or installation may be undertaken. Approval does not authorize changes to the Contract Sum or Time	<input type="checkbox"/> Revise and resubmit <input type="checkbox"/> Rejected Fabrication and / or installation MAY NOT be undertaken. In resubmitting, limit corrections to items marked
Review and / or approval neither extends nor alters contractual obligation of the Architect or Contractor. Review / approval is for conformance with design concept and information given in the Contract Documents, and does not extend to fabrication, construction techniques, or coordination of trades and their work. By <u>C Dufresne</u> Date <u>12/14/18</u>	

Refer to mark ups on drawing



Photos of samples as provided by J&J

SECTION 0984336 SOUND ABSORBING SUSPENDED RIGID BAFFLES

MBI PRODUCTS CO CLOUDLIKE ACOUSTICAL BAFFLE SERIES 2800F-2060

2" THICK X 6 # DENSITY FIBERGLASS, RESIN HARDENED SQUARE

EDGES, MOUNTING EYEHOOKS ALONG TOP EDGE, FINISH WRAPPED

WITH GUILFORD FR-701 FABRIC 44 PCS 10 FT X 1 FT 6 IN HIGH AND 4 PCS

7 FT 6 IN X 1 FT 6 IN HIGH

AIRCRAFT CABLE FOR INSTALLATION

CLOUD-LITE® BAFFLES

The Perfect Solution for Large Volume Spaces

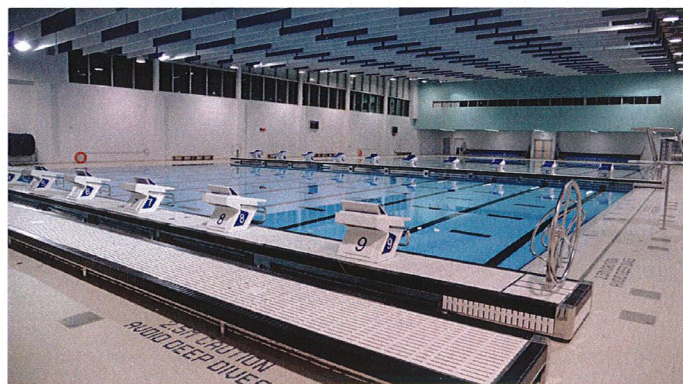
PRODUCT DESCRIPTION

MBI pioneered the original Cloud-Lite® Acoustical Baffle over 50 years ago, and today offers the most complete line of acoustical baffles throughout the industry.

Cloud-Lite Baffles are designed to solve acoustical problems in any large cubic volume space such as arenas, gymnasiums, natatoriums, theaters, restaurants, offices, corridors, kennels, and industrial buildings for OSHA compliance.

Cloud-Lite Baffles are easily suspended from ceilings, bar joists, horizontally stretched cable, or pre-engineered suspension systems. Cloud-Lite Baffles can be arranged to create different architectural effects, depending on the desired end use of the space, and integrate exceptionally well with existing lighting and HVAC systems.

These highly-effective acoustical products are Class A, lightweight, cost-efficient, and easy to install, making them the industry's most practical solution to noise control.



ACOUSTICAL PERFORMANCE

PRODUCT MODEL	ABSORPTION COEFFICIENT						
	IN SABINS PER 4' X 2' UNIT						
	125	250	500	1000	2000	4000	NRC
2600P-2065-GGF (2" x 1.65# Core, PVC Film)	2.43	5.49	10.64	12.23	8.01	4.74	1.15
2600P-1515-GGF (1.5" x 1.5# Core, PVC Film)	2.43	4.45	8.14	10.44	7.54	4.18	1.00
2800S-2065-GGF (2" x 1.65#, Sailcloth)	2.08	4.77	8.31	11.46	7.81	4.56	1.00
2800WS-2065-GGF (2" x 1.65# Core, Bright White Sailcloth)	2.79	7.23	11.23	14.09	7.5	4.14	0.80
2800P-4065-GGF (4", 1.65# Core, PVC Film)	2.70	7.35	10.45	12.22	10.49	6.28	1.00
2800F-2060-E (2" x 6-7# Core, Polyester Fabric)	2.28	5.90	10.92	13.86	14.32	13.98	1.40
2600P-1030-GGF (1" x 3# Core, PVC Film)	2.50	3.94	6.72	11.52	12.11	8.69	1.07
2600VRV-2065-GGF (2" x 1.65# Core, VRV Film)	2.87	5.05	10.20	11.08	6.06	3.37	1.02
2600PP-2065-GGF (2" x 1.65# Core, Perf. PVC Film)	2.74	5.94	10.84	13.86	13.45	12.36	1.38

CODES & CERTIFICATES

- ★ Class A per ASTM E84 25/0/50
- ★ NRC 0.80 to 1.40 per ASTM C423-84A & E795
- ★ Integration with sprinkler, lighting, and HVAC systems
- ★ Light Reflectivity .20 to .80 per ASTM C523-68



We believe this information is the best currently available on the subject. It is subject to revision as additional knowledge and experience are gained. MBI makes no guarantee of results and assumes no obligation or liability whatsoever in connection with the use of this information. © 2016 MBI Products Company, Inc.

FOR MORE INFORMATION ON THESE PRODUCTS GO TO WWW.MBIPRODUCTS.COM

MBI Cloud-Lite® Acoustical Baffles

TECHNICAL SUPPORT

- **Weight:** 0.25# - 1.5# per square foot.
- **Densities:** 1.5#, 1.65#, 3#, 6-7#
- **Shape:** Custom geometric shaped panel designs are available.
- **Fire Rating:** Cloud-Lite meets Class A per ASTM E84 25/0/50
- **Dimensional Stability:** Cloud-Lite is dimensionally stable due to the fiberglass core.

SIZES AVAILABLE

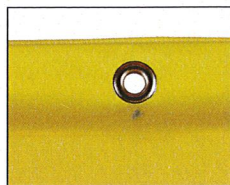
- Custom sizes available up to 4' x 10'
- Thickness of 1" through 2"
(Thicker panels available with custom design)
- 1.5", 1.5# baffles available in size 4' x 2' only

FINISHES AVAILABLE

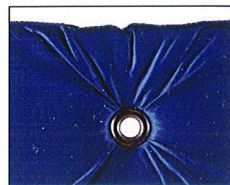
- PVC Film, 2-3 Mil (see color card)
- Sailcloth, Nylon Ripstop (see color card)
- Polyester Fabrics. Other Fabrics, subject to approval
- VRV Industrial / Abuse Resistant Film

ACCESSORIES AVAILABLE

- Factory installed nickel plated brass or non-corrosive, stainless steel grommets for suspension
- Grommets in 1.5" flap for wrinkle-free appearance
- Eyescrews for pendant suspension
- Stainless Steel and PVC coated tie wire for connecting baffles to suspension system
- Grid clips for attaching baffles to grid system
- Cable, Crimps, Clamps, and Turnbuckles



Cloud-Lite® Baffle 2600P-2065,
PVC with Grommet in Flap



Cloud-Lite® Baffle 2800S-2065,
Sailcloth with Grommet in Panel



Cloud Lite Baffle 2800F-2060-E
Guilford Anchorage with Eye hooks

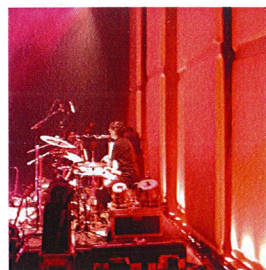
GENERAL NOTES

- Store products in a cool, dry and temperature controlled interior area. Temperatures should not be less than 40°F prior to, during and after installation.
- Store and protect products from the elements and from damage.
- Store products out of direct UV sunlight.
- Sailcloth is not recommended for high humidity or high UV areas.
- Suspension hardware should not be pre-installed. Grommet locations will vary from size to size.
- Due to the nature of this product, some wrinkling and puckering is common and unavoidable.
- Baffles are constructed from a soft and flexible fiberglass core.
- Field cutting is not recommended.
- Before installing baffles, please request copies of installation drawings and details.
- Do not subject acoustical products to critical edge lighting without first consulting manufacturer.

MBI Pocket Panel

The MBI Pocket Panel is a flexible sound absorber. It can be formed around corners or used in a continuous curving pattern, unique to trendy spaces.

It can be manufactured and installed vertically like the Cloud-Lite baffle, or horizontally like our Lapendary Panel.



SOUND | experience

PIONEERS IN THE DESIGN AND MANUFACTURING OF ACOUSTICAL PRODUCTS FOR OVER 50 YEARS



Since 1965

INNOVATION FOR THE SOUND EXPERIENCE

WWW.MBIPRODUCTS.COM

801 Bond Street
Elyria, Ohio 44035-3318
t: 440.322.6500
fx: 440.322.1900



MBI Cloud-Lite® Baffle Guide Specification Series 2800F-2060-E

Part I: General

1.1 Work Included:

The work consists of furnishing all labor, materials, accessories and equipment necessary to cover all areas shown on the drawings and specified herein with MBI Panels.

1.2 Delivery and Storage:

Store this product in unopened cartons in a clean, cool, dry interior space. Cartons and product must be protected against marring, water, dirt or damage during delivery and storage.

Part II: Product

2.1 Product and Manufacturer:

MBI Cloud-Lite® Acoustical Baffles exclusively manufactured by:
MBI Products Company, Inc.
801 Bond Street
Elyria, Ohio 44035-3318
Phone: 440.322.6500
Fax: 440.322.1900
Website: www.mbiproducts.com
Email: sales@mbiproducs.com

2.1.1 Geometric Shape: Rectangular

2.1.2 Size & Thickness: 2" Thick
(Maximum size up to 4' x 10')

2.1.3 Core: 6-7# Fiberglass

2.1.4 Surface Finish: Polyester Fabric

2.1.5 Color: To be selected by architect from manufacturer's standard selection

2.1.6 Edge Shape:
Square/Beveled/Rounded

2.1.7 Edge Construction: Sewn

2.1.8 Frame: Chemically Hardened

2.1.9 Acoustical Performance:

RAL A96-78 Type "J" Mtg. 3232 (2'x4') **NRC 1.40**

Hz	125	250	500	1000	2000	4000
APU	2.28	5.90	10.92	13.86	14.32	13.98

2.1.10 Incombustibility:

Class A per ASTM E84 25/0/50

2.1.11 Suspension Provision:

Eye Hooks

Part III: Execution

3.1 Installation

3.1.1 MBI acoustical panels shall be located and spaced as detailed on reflected ceiling plans and/or detailed on the interior elevation drawings and as indicated on room finish schedule.

3.1.2 Suspend Panels From: (horizontal stretched wire or cable) (fasteners [eye screws] [L-Hook]) (existing construction) (see MBI drawings for more information)

3.1.3 Attachment Method:

(coated wire tie) (stainless steel tie)
(see MBI drawings for more information)

3.1.4 Workmanship

The acoustical system shall be installed only by an approved contractor.

All work shall be completed in a workman like manner. All panels shall be properly installed and left in a clean, sanitary condition. Contractor shall remove and dispose of shipping containers and debris.

FR701[®] 2100

Panel
Acoustic



Eggshell
144



Wheat
130



Bone
748



Buff
460



Straw
747



Quartz
380



Pearl
481



Desert Sand
758



Apricot Neutral
404



Pumice
423



Sunshine
797



Light Moss
754



Earth
792



Moleskin
796



Chocolate
793



Dune
749



Leaf
755



Stream
757



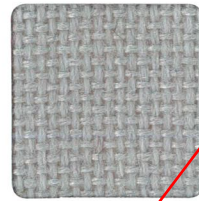
Aquamarine
381



Blue Spruce
467



Verte Papier
561



Coin
794



Blue Papier
539



Blue Neutral
401



Crystal Blue
175



White
224



Opal
394



Silver Papier
538



Silver Neutral
406



Cement Mix
750

ACTUAL
SUPPLIED



Vanilla Neutral
403



Terra
751



Cherry Neutral
400



Cinnabar
422



Rose Quartz
390



Bronze
545



Sienna
475



Red
799



Claret Accent
418



Deep Burgundy
556



Lavender Neutral
405



Lilac
752



Violet
753



Amethyst
424



Iris
798



Eucalyptus
468



Green Neutral
402



Lake
756



Chrome Green
549



Ultramarine
470



Bayberry
486



Wedgewood
150



Cobalt
420



Baltic
153



Blue Plum
553



Steel Grey
471



Grey Mix
238



Flannel
795



Medium Grey
298



Black
408

FR701® 2100

Panel
Acoustic

Specifications

Content

100% post-consumer recycled polyester

Weight

16.0 ± 0.5 oz./lin. yd.

Width

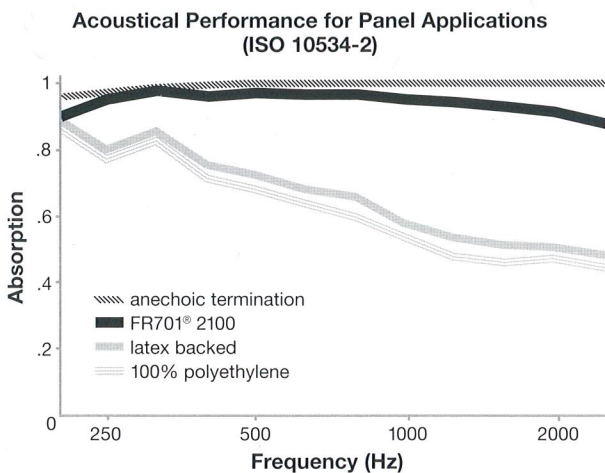
66" min. useable

Repeat

none

Acoustical Performance

The plot below summarizes impedance tube measurements of absorption of an anechoic termination and various fabrics in front of the anechoic termination.



NRC of anechoic termination

1.00

NRC of fabric in front of anechoic termination

.95

Cleaning Code


Standard Care Label W-S. Clean with water based cleaning agents, foam or pure, water free solvents. Vacuuming or light brushing is recommended to prevent dust and soil buildup.

Performance


 **Colorfastness to Light (AATCC 16 Option 3)**
Grade 4 min. at 40 hours

 **Colorfastness to Crocking (AATCC 8)**
Grade 4 min. dry & Grade 3 min. wet

 **Breaking Strength (ASTM D5034)**
150 lbf min. warp and fill

 *** Flammability (ASTM E84)**
Class I or A

Sustainability

 **100% recycled and recyclable**
Terratex is a registered trademark of Duvaltex

 **facts[™]**
Silver

Miscellaneous

5 year limited warranty. Proudly woven in North America supporting our local communities.

Application testing of this product is recommended. Colors may vary between dye lots. This is a non-directional fabric.

Visit guilfordofmaine.com for samples.



This pattern is included in the underwriters laboratory panel fabric recognition program. Additional testing of this U.L. recognized component fabric is not required on approved panels from participating manufacturers.

*Certification Marks owned by the Association for Contract Textiles, Inc.

Guilford of Maine

guilfordofmaine.com

800 544 0200 Customer Care
616 554 2255 Fax

02/17

NOTE:
 1. ALL FIRE PULLS TO HAVE A TAMPER RESISTANT COVER.
 2. ALL LIGHTS, DEVICES AT GYM TO HAVE PROTECTIVE GUARDS OR COVERS.

705 SF OF CEILING BAFFLES
 22 BAFFLES @ 20' X 18" = 660 SF
 2 BAFFLES @ 15' X 18" = 45 SF

Lateral Bracing

1.156" x 1.156" x 1/16" between top and bottom chord of joists
 so install full run of 12" panels
 between top and bottom joist
 bracing
 or
 install shorter runs of 17" panels

Please install 12" deep baffles between the top and bottom lateral bracing

Panels stop a uniform distance from the wall

X Bracing

No panels at little portions of the ceiling by the curved wall

Align

1'-6" from wall

Ductwork

Panels stop at cross bracing locations

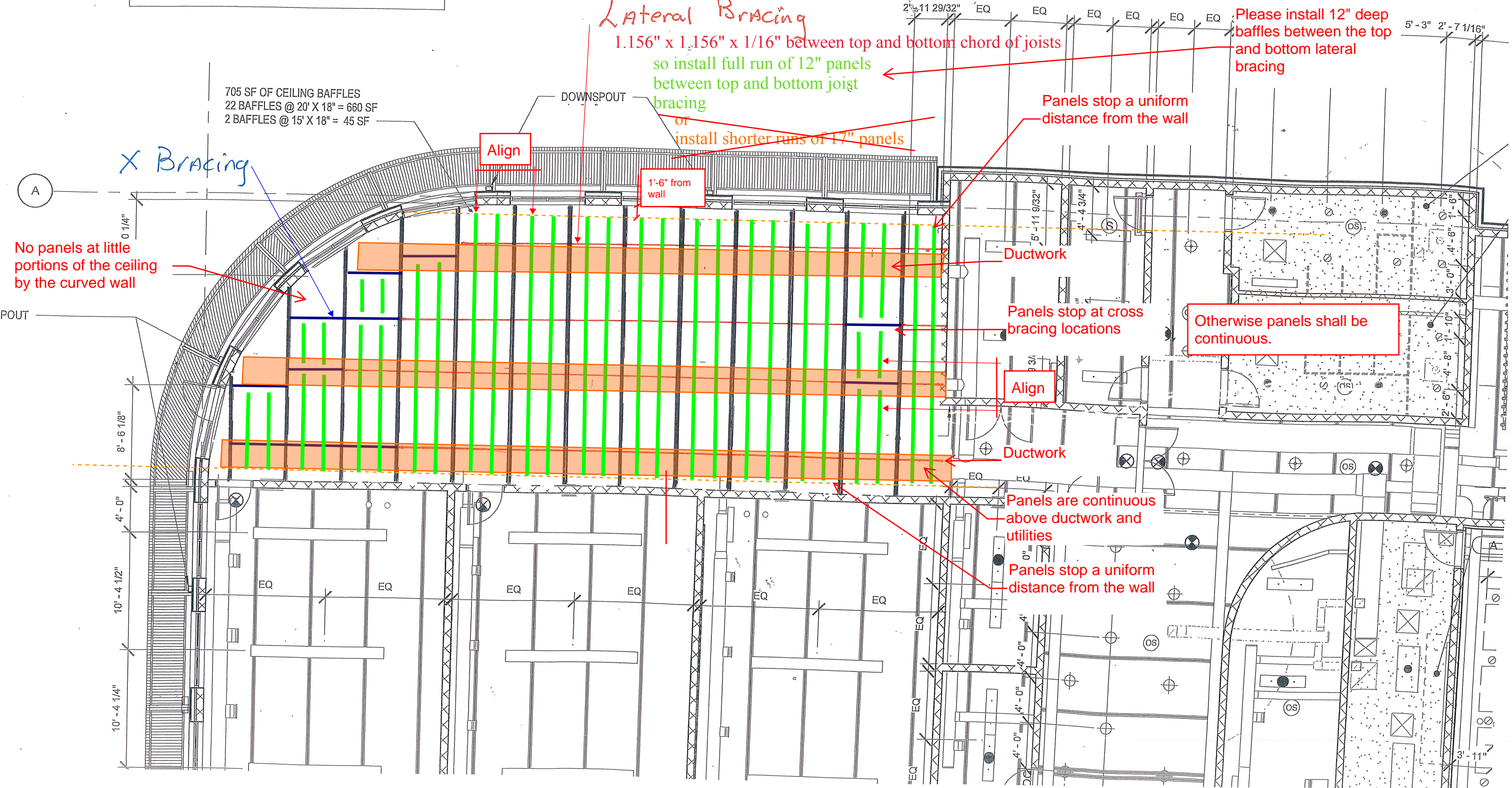
Otherwise panels shall be continuous.

Align

Ductwork

Panels are continuous above ductwork and utilities

Panels stop a uniform distance from the wall

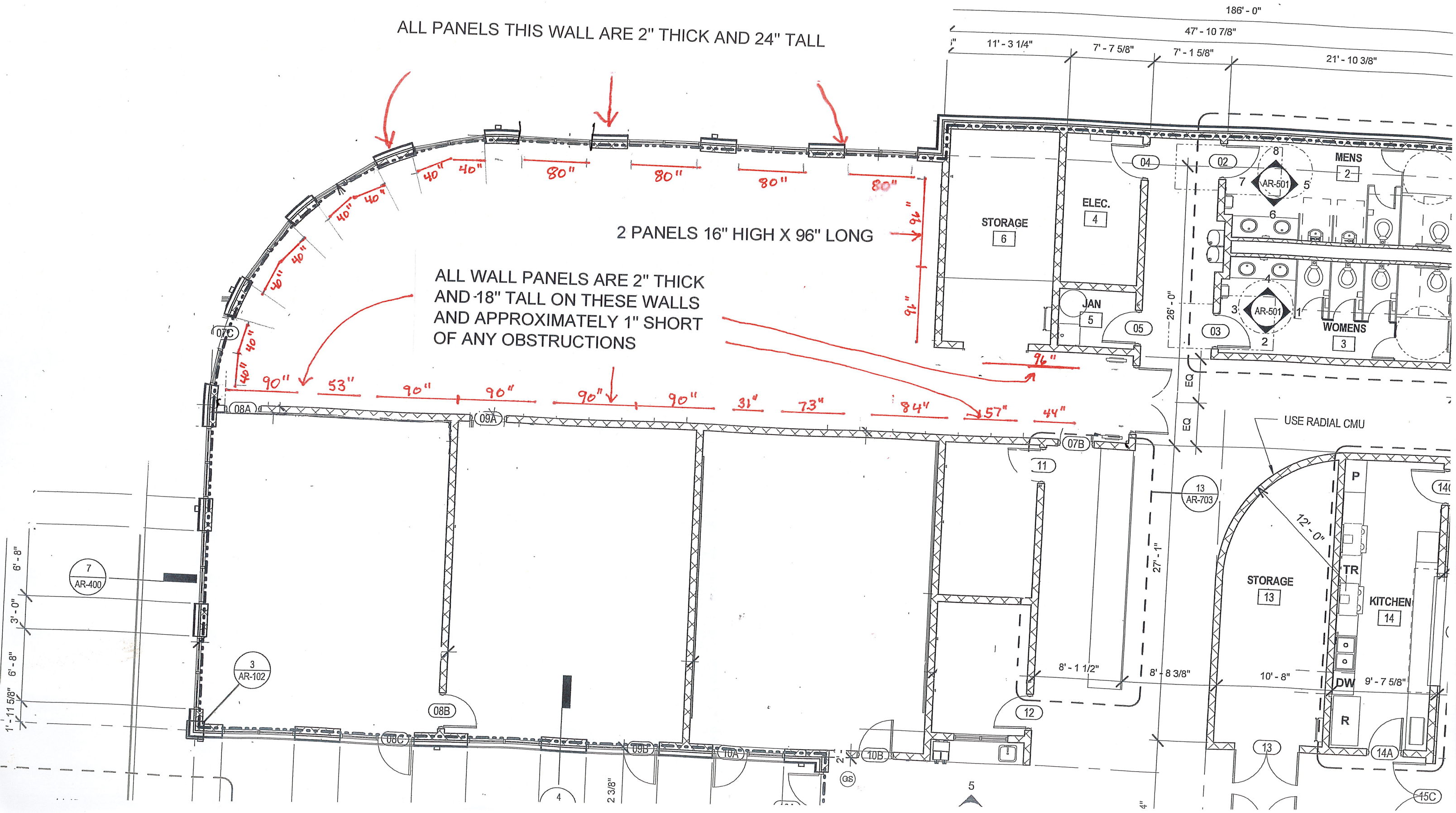


REVISED ORIGINAL DOCUMENTATION
(AS-SUPPLIED)

ALL PANELS THIS WALL ARE 2" THICK AND 24" TALL

2 PANELS 16" HIGH X 96" LONG

ALL WALL PANELS ARE 2" THICK AND 18" TALL ON THESE WALLS AND APPROXIMATELY 1" SHORT OF ANY OBSTRUCTIONS



NOTE:
1. ALL FIRE PULLS TO HAVE A TAMPER RESISTANT COVER.
2. ALL LIGHTS, DEVICES AT GYM TO HAVE PROTECTIVE GUARDS OR COVERS.

3 PANELS 48" WIDE X 72" LONG 1 1/2" THICK
12 PANELS 48" WIDE X 96" LONG 1 1/2" THICK

2 PANELS 48" WIDE X 96" LONG 1 1/2" THICK

