

District-Wide Network Refresh RFP Supporting Documents

Contents

1.0 District Office

1.1 MDF/IDF Locations

1.2 Access Point Locations

1.3 Site Map

2.0 Berkeley City College

2.1 MDF/IDF Locations

2.2 Access Point Locations

2.3 Site Map

3.0 Laney College

3.1 MDF/IDF Locations

3.2 Access Point Locations *see also WLAN Design – Laney.pdf

3.3 Site Map

3.4 New Drop Locations for Labs

4.0 Merritt College

4.1 Grounds Keeper Building

5.0 College of Alameda

5.1 Maintenance Engineers Office

5.2 Bookstore

1.0 District Office

1.1 MDF/IDF Locations

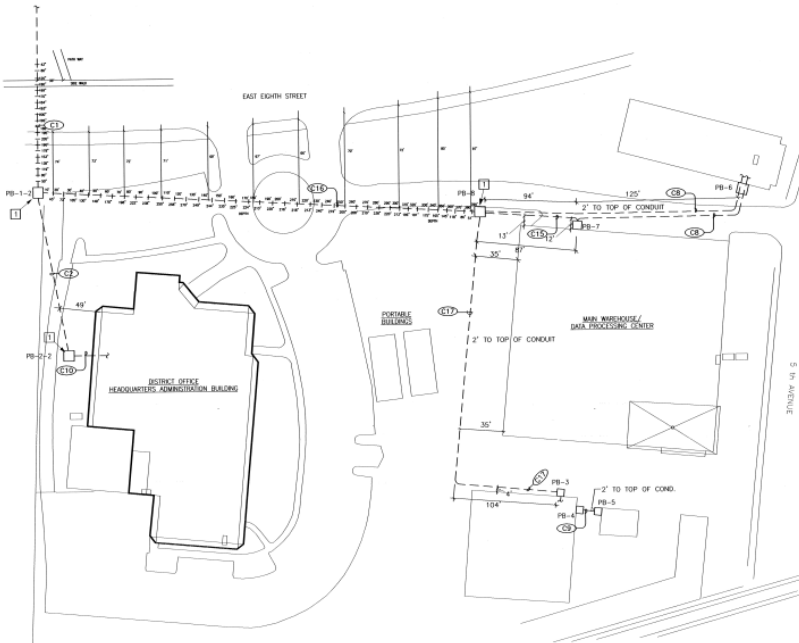
Room	Name
DW132	IT Data Center
DAC	District Administrative Center
DW171	DGS MDF
DW107	Purchasing MDF
AR112	AR MDF
PCTV Portable 1	PCTV MDF
International Portable 1	International MDF
Old Foundation Portable	Old Foundation IDF

1.2 Current Access Point Locations

WAP-01-25F8-IT
WAP-02-25F0-IT2
WAP-03-25F4-DGS175
WAP-04-25FC-DGS181
WAP-05-25FE-DGS187A
WAP-06-27EE-DGS187
WAP-07-25E8-DGS182C
WAP-08-25EE-DGS186C
WAP-09-24DC-WH1
WAP-10-25DE-WH2
WAP-11-24D4-Purchasing
WAP-12-25E6-DUPMEDIA
WAP-13-24D6-ENGINEER
WAP-14-24CC-PORTABLE
WAP-15-24DA-AR1
WAP-16-24B0-AR2
WAP-17-24BE-AR3
WAP-18-24BA-INTL1
WAP-19-24C2-INTL2
WAP-20-24D2-PCTV
WAP-21-251C-PCTV

WAP-22-2522-CO_CONF
WAP-23-2524- BROADROOM
WAP-24-2510-HR
WAP-25-25A4-FINANCE
WAP-26-2512-PAYROLL
WAP-27-2538-EDS
WAP-28-2514-FIN_CONF
WAP-29-252C-FAC_SEN
WAP-30-33B0-HUMANREL
WAP-31-25F6-DAC_Lobby2
WAP-32-3B30-DAC_Lobby1

1.3 Site Maps



NEW 3' X 5' X 3' DEEP PULLBOX WITH AN HDG TRAFFIC RATED COVER

DUCT BANK TAG	EXISTING CONDUIT	NEW CONDUIT
CB-1	(1) 4"	(1) 4"
CB-2	(1) 4"	(1) 4"
CB-3	(1) 4"	(1) 4"
CB-4	(1) 4"	(1) 4"
CB-5	(1) 4"	(1) 4"
CB-6	(1) 4"	(1) 4"
CB-7	(1) 4"	(1) 4"

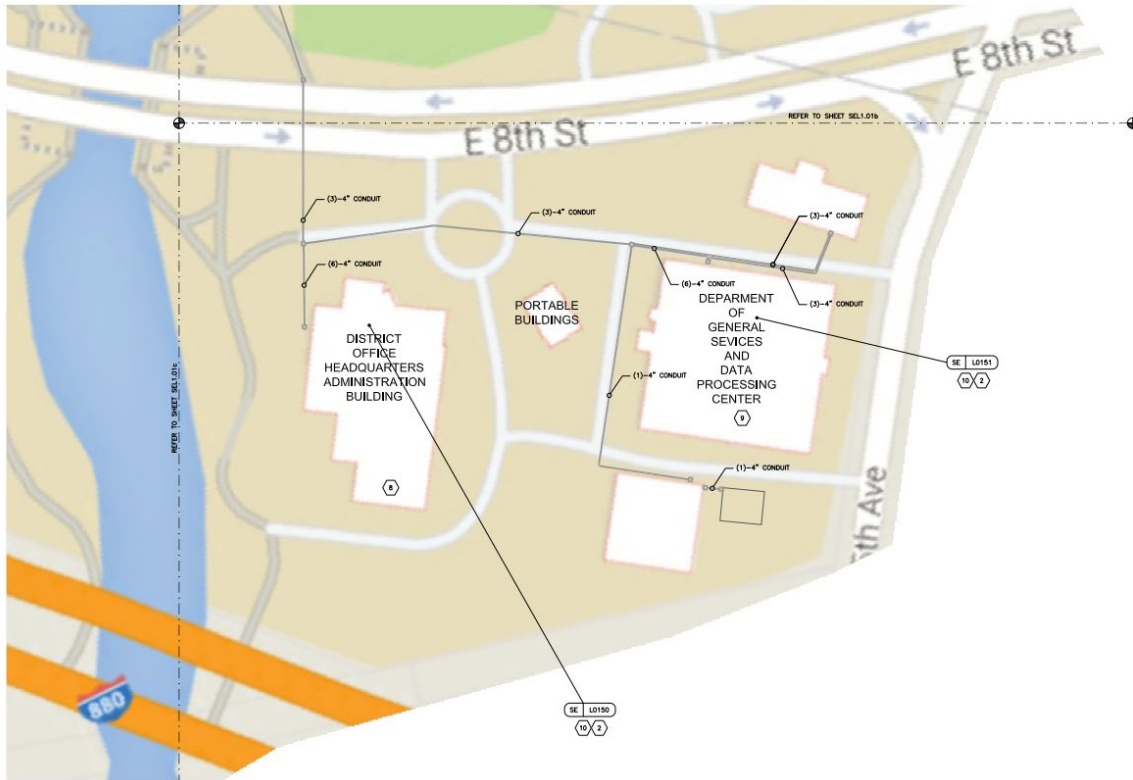
NOTES:
1. REFER TO COMMUNICATION CONDUIT SCHEDULE, SHEET ED.2 AND ED.3, FOR CONDUIT INFORMATION.

TYPE	PULL BOX SCHEDULE	COVER MARKED
PB-1-2	3'x5'x3'	SIGNAL
PB-2-2	3'x5'x3'	SIGNAL
PB-3	12"x18"x8" NEMA 3R	
PB-4	12"x12"x8" NEMA 3R	
PB-5	18"x18"x8" NEMA 3R	
PB-6	3'x5'x18" NEMA 3R	
PB-7	4'x4'x18" NEMA 3R	

GENERAL NOTES

- UNLESS OTHERWISE NOTED, ALL TRENCHES ARE 2' DEEP TO TOP OF CONDUITS.
- UNLESS CONDUIT ROUTINGS ARE DIMENSIONED, CONDUITS ARE SHOWN IN THEIR APPROXIMATE LOCATIONS.
- REFER TO COMMUNICATION CONDUIT SCHEDULES ON SHEETS ED.2, ED.3, AND ED.4 FOR ROOM TERMINATION LOCATIONS OF INDIVIDUAL CONDUITS.





2.0 Berkeley City College

2.1 MDF/IDF Locations

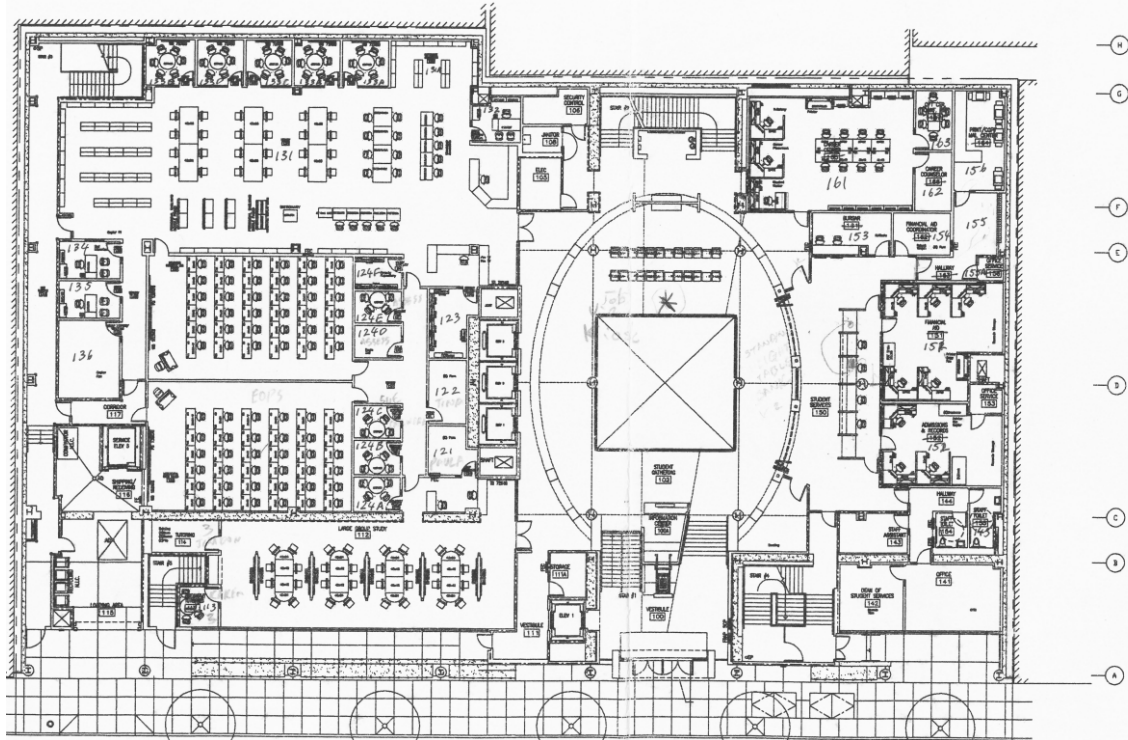
Room	Name
MPOE	Main MDF
205	2nd Floor MDF
305	3rd Floor MDF
405	4th Floor MDF
505	5th Floor MDF

2.2 Access Point Locations

BCC_WAP_1-1
BCC_WAP_1-10
BCC_WAP_1-11

BCC_WAP_1-12
BCC_WAP_1-13
BCC_WAP_1-14
BCC_WAP_1-15
BCC_WAP_1-17
BCC_WAP_1-3
BCC_WAP_1-4
BCC_WAP_1-5
BCC_WAP_1-6
BCC_WAP_1-7
BCC_WAP_1-9
BCC_WAP_2-1
BCC_WAP_2-10
BCC_WAP_2-12
BCC_WAP_2-13
BCC_WAP_2-14
BCC_WAP_2-15
BCC_WAP_2-16
BCC_WAP_2-17
BCC_WAP_2-3
BCC_WAP_2-6
BCC_WAP_2-7
BCC_WAP_2-8
BCC_WAP_2-9
BCC_WAP_3-1
BCC_WAP_3-10
BCC_WAP_3-11
BCC_WAP_3-12
BCC_WAP_3-14
BCC_WAP_3-15
BCC_WAP_3-16
BCC_WAP_3-2
BCC_WAP_3-3
BCC_WAP_3-4
BCC_WAP_3-5
BCC_WAP_3-6
BCC_WAP_3-7
BCC_WAP_3-8

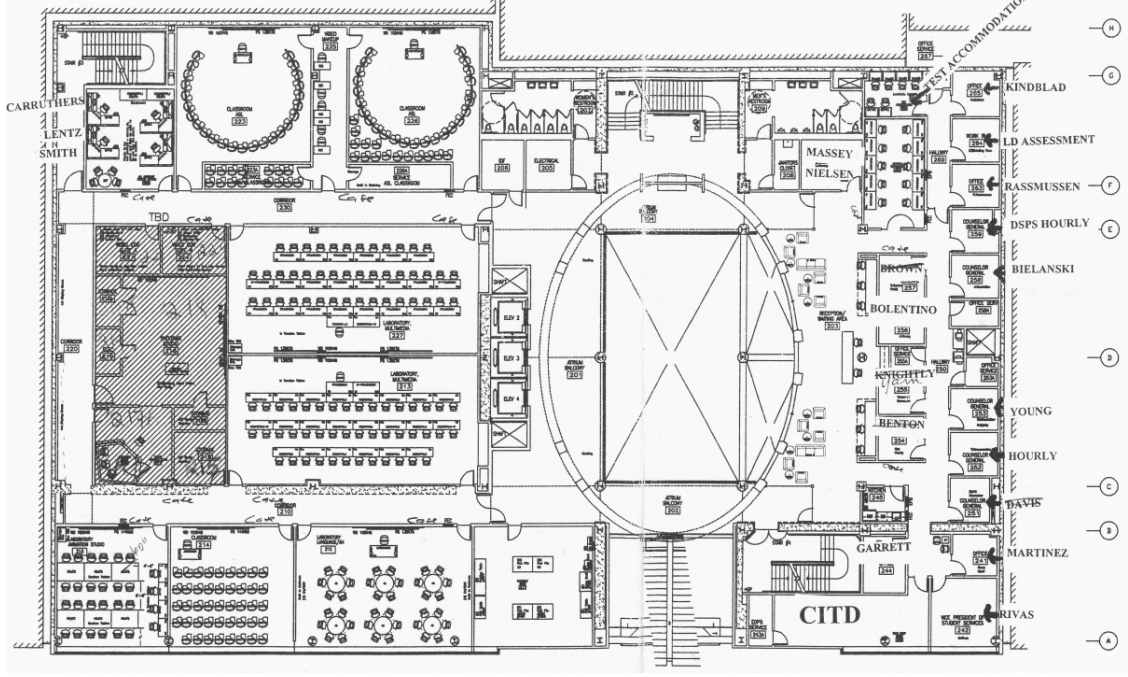
BCC_WAP_3-9
BCC_WAP_4-1
BCC_WAP_4-10
BCC_WAP_4-11
BCC_WAP_4-12
BCC_WAP_4-13
BCC_WAP_4-14
BCC_WAP_4-15
BCC_WAP_4-3
BCC_WAP_4-5
BCC_WAP_4-6
BCC_WAP_4-7
BCC_WAP_4-8
BCC_WAP_4-9
BCC_WAP_5-1
BCC_WAP_5-10
BCC_WAP_5-11
BCC_WAP_5-12
BCC_WAP_5-13
BCC_WAP_5-14
BCC_WAP_5-15
BCC_WAP_5-3
BCC_WAP_5-4
BCC_WAP_5-5
BCC_WAP_5-6
BCC_WAP_5-7
BCC_WAP_5-8
BCC_WAP_5-9
BCC_WAP_B-1
BCC_WAP_B-10
BCC_WAP_B-11
BCC_WAP_B-12
BCC_WAP_B-13
BCC_WAP_B-15
BCC_WAP_B-16
BCC_WAP_B-2
BCC_WAP_B-3
BCC_WAP_B-4



Floor 1
Furniture Plan

Vista College
2050 Center Street
Berkeley, CA 94707

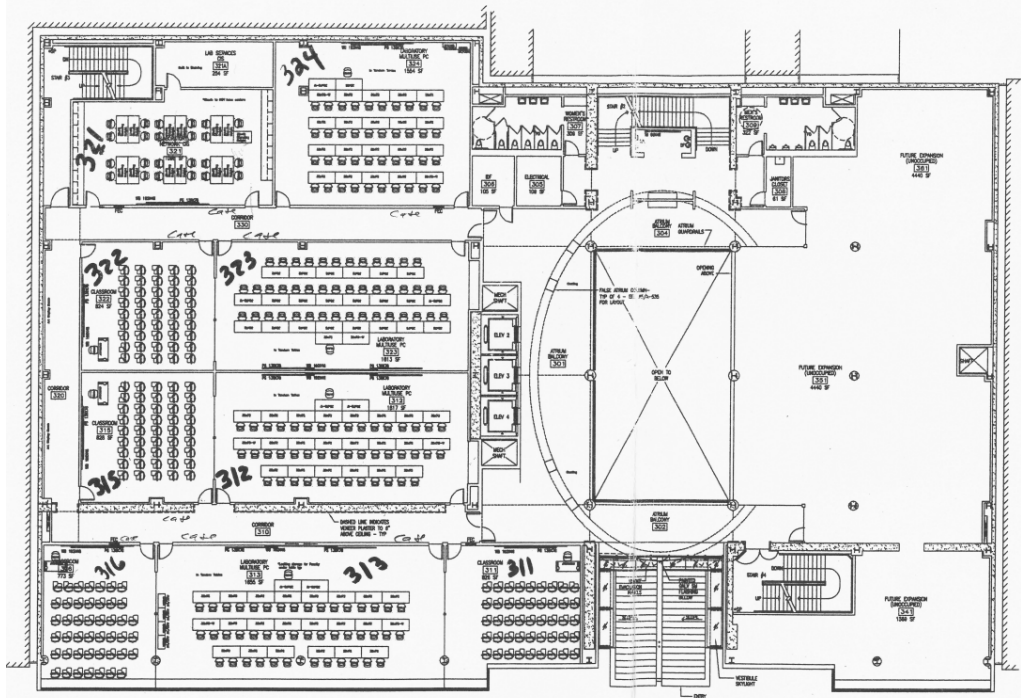
REVISIONS	
BY	DATE



Floor 2
Furniture Plan

Vista College
2050 Center Street
Berkeley, CA 94707

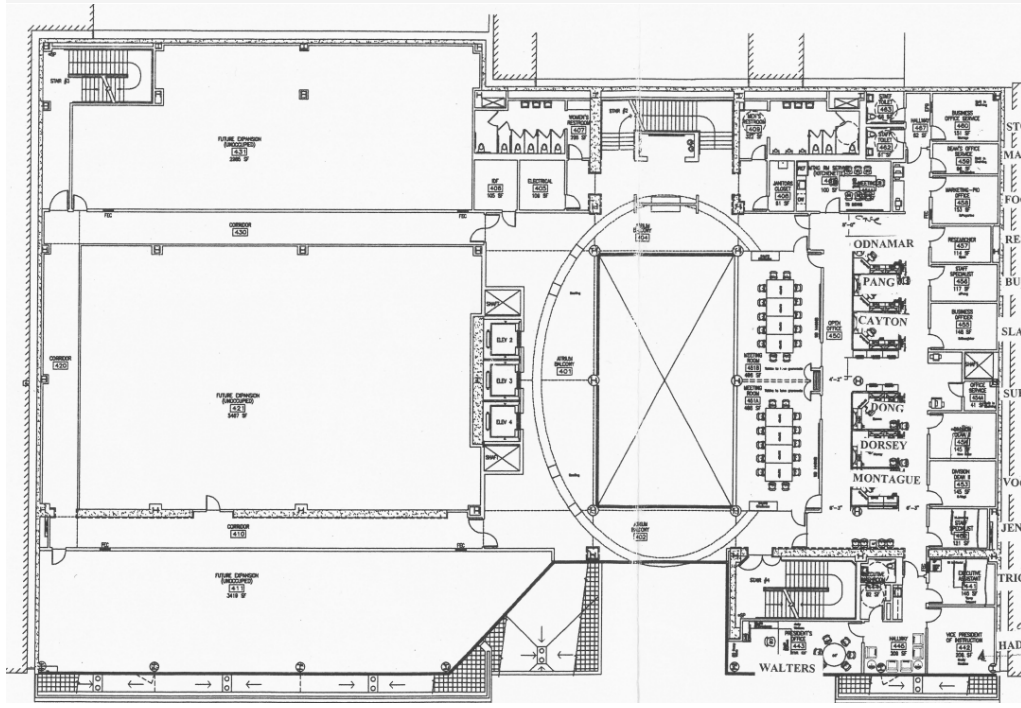
REVISIONS	
BY	DATE



Floor 3
Furniture Plan

Vista College
2050 Center Street
Berkeley, CA 94707

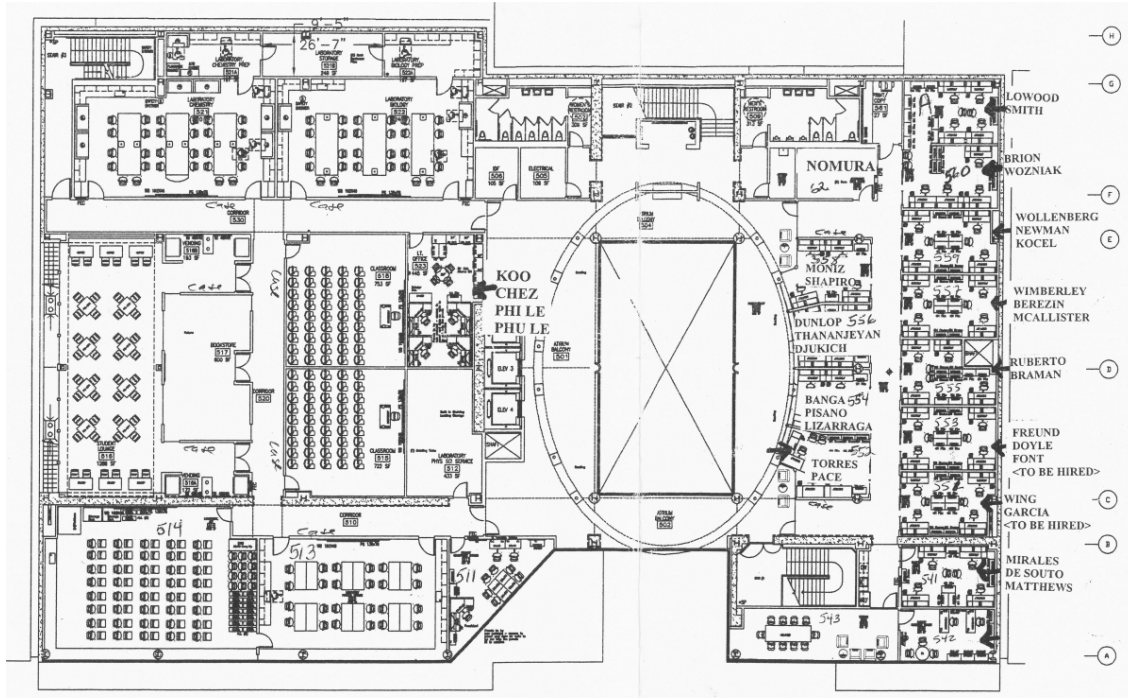
REVISIONS	
NO.	DATE



Floor 4
Furniture Plan

Vista College
2050 Center Street
Berkeley, CA 94707

REVISIONS	
NO.	DATE
	13.06.05
	01.18.06
	07.24.08



Floor 5
Furniture Plan

Vista College
2050 Center Street
Berkeley, CA 94707

REVISIONS	
NO.	DATE
11	11.18.05
12	12.08.05
13	12.13.05
14	02/14/06
15	04/05/06

3.0 Laney College

3.1 MDF/IDF Locations

Building	Access Room	Room Number
Art Center A		AC106
		AC131
		A152G
		A192B
		A204C
B		B154
		B209
D		D100A
E		E262
F		F109 / F170
		F206
G		G213
		G267A
		G272D
THEATER		TH115
		TH305
LIBRARY		L114A
		L200
		L400
Child Care		N-F
Field House		FH211
STUDENT CENTER		S110C
		S300C
Under FORUM	FR104	U104
Gym Locker Rooms	GM204	Y204
EAGLE VILLAGE	EV3	
TOWER BASEMENT		
TOWER 2nd		

TOWER 5th		
TOWER 9th		T905 IDF 9.1
Press Box		

3.2 Access Point Locations

Device Model	Location	Topology Map
AP230	A Building	A-Building_2nd
AP230	A Building	A-Building_1st
AP230	A Building	A-Building_1st
AP230	A Building	A-Building_2nd
AP230	A Building	A-Building_1st
AP230	A Building	A-Building_2nd
AP230	A Building	A-Building_2nd
AP230	A Building	A-Building_2nd
AP230	A Building	A-Building_2nd
AP230	A Building	A-Building_1st
AP230	A Building	A-Building_1st
AP230	A Building	A-Building_1st
AP230	A Building	A-Building_1st
AP230	A Building	A-Building_1st
AP230	A Building	A-Building_1st
AP230	A Building	A-Building_2nd
AP230	A Building	A-Building_1st
AP230	A Building	A-Building_1st
AP230	A Building	A-Building_2nd
AP230	A Building	A-Building_1st
AP230	A Building	A-Building_2nd
AP230	A Building	A-Building_2nd
AP230	A Building	A-Building_2nd
AP230	A Building	A-Building_1st
AP230	A Building	A-Building_1st
AP230	A Building	A-Building_2nd
AP230	A Building	A-Building_2nd
AP230	Art Center	Art_Center_1st
AP230	Art Center	Art_Center_1st
AP230	Art Center	Art_Center_1st
AP230	Art Center	Art_Center_1st
AP230	Art Center	Art_Center_1st

AP230	Art Center	Art_Center_1st
AP230	Art Center	Art_Center_1st
AP230	B Building	B-Building_1st
AP230	B Building	B-Building_1st
AP230	B Building	B-Building_2nd
AP230	B Building	B-Building_2nd
AP230	B Building	B-Building_2nd
AP230	B Building	B-Building_2nd
AP230	B Building	B-Building_2nd
AP230	B Building	B-Building_1st
AP230	B Building	B-Building_2nd
AP230	B Building	B-Building_2nd
AP230	B Building	B-Building_2nd
AP230	B Building	B-Building_2nd
AP230	B Building	B-Building_2nd
AP230	B Building	B-Building_2nd
AP230	B Building	B-Building_2nd
AP230	B Building	B-Building_1st
AP230	B Building	B-Building_2nd
AP230	B Building	B-Building_2nd
AP230	B Building	B-Building_1st
AP230	B Building	B-Building_1st
AP230	B Building	B-Building_2nd
AP230	BookStore	
AP230	C Building	C_Building_1st
AP230	C Building	C_Building_1st
AP230	ChildCare	Childrens_Center_1st
AP230	D Building	D-Building_1st
AP230	D Building	D-Building_2nd
AP230	D Building	D-Building_1st
AP230	D Building	D-Building_2nd
AP230	E Building	E-Building_2nd
AP230	E Building	E-Building_2nd
AP230	E Building	E-Building_2nd
AP230	E Building	E-Building_1st
AP230	E Building	E-Building_2nd
AP230	E Building	E-Building_2nd
AP230	E Building	E-Building_1st
AP230	E Building	E-Building_1st
AP230	E Building	E-Building_1st
AP230	E Building	E-Building_2nd
AP230	E Building	E-Building_1st
AP230	E Building	E-Building_2nd

AP230	E Building	E-Building_1st
AP230	E Building	E-Building_2nd
AP230	E Building	E-Building_2nd
AP230	E Building	E-Building_2nd
AP230	E Building	E-Building_2nd
AP230	E Building	E-Building_1st
AP230	E Building	E-Building_2nd
AP230	E Building	E-Building_2nd
AP230	E Building	E-Building_1st
AP230	E Building	E-Building_2nd
AP230	EV4	
AP230	F Building	F-Building_2nd
AP230	F Building	F-Building_2nd
AP230	F Building	F-Building_2nd
AP230	F Building	F-Building_1st
AP230	F Building	F-Building_2nd
AP230	F Building	F-Building_2nd
AP230	F Building	F-Building_2nd
AP230	F Building	F-Building_2nd
AP230	F Building	F-Building_1st
AP230	F Building	F-Building_1st
AP230	F Building	F-Building_1st
AP230	F Building	F-Building_1st
AP230	F Building	F-Building_2nd
AP230	F Building	F-Building_2nd
AP230	F Building	F-Building_1st
AP230	F Building	F-Building_2nd
AP390	FH	Field_House_1st
AP390	FH	Field_House_2nd
AP390	FH	Field_House_2nd
AP230	FH	Field_House_2nd
AP230	FH	Field_House_2nd
AP230	FH	Field_House_2nd
AP230	FH	
AP1130	FH	Field_House_2nd
AP390	FORUM	Forum_1st
AP390	FORUM	Forum_1st
AP230	G Building	G-Building_2nd
AP230	G Building	G-Building_2nd

AP230	G Building	G-Building_1st
AP230	G Building	G-Building_1st
AP230	G Building	G-Building_2nd
AP230	G Building	G-Building_2nd
AP230	G Building	G-Building_2nd
AP230	G Building	G-Building_2nd
AP230	G Building	G-Building_1st
AP230	G Building	G-Building_2nd
AP230	G Building	G-Building_1st
AP230	G Building	G-Building_2nd
AP230	G Building	G-Building_1st
AP230	G Building	G-Building_2nd
AP230	G Building	G-Building_2nd
AP230	G Building	G-Building_2nd
AP230	G Building	G-Building_2nd
AP230	G Building	G-Building_1st
AP230	G Building	G-Building_2nd
AP230	G Building	G-Building_2nd
AP230	G Building	G-Building_1st
AP230	G Building	G-Building_2nd
AP230	G Building	G-Building_2nd
AP230	G Building	G-Building_2nd
AP230	G Building	G-Building_2nd
AP230	G Building	G-Building_2nd
AP230	G Building	G-Building_2nd
AP230	G Building	G-Building_2nd
AP230	G Building	G-Building_2nd
AP230	G Building	G-Building_1st
AP230	G Building	G-Building_1st
AP230	G Building	G-Building_1st
AP230	G Building	G-Building_1st
AP230	G Building	G-Building_1st
AP230	G Building	G-Building_1st
AP390	GYM	Gym_2nd
AP390	GYM	Gym_2nd
AP390	GYM	Gym_2nd
AP390	GYM	Gym_2nd
AP230	GYM	Gym_1st
AP230	LIB	Library_1st
AP230	LIB	Library_3rd
AP230	LIB	Library_1st
AP230	LIB	Library_4th
AP230	LIB	Library_4th
AP230	LIB	Library_1st

AP230	LIB	Library_2nd
AP230	LIB	Library_2nd
AP230	LIB	Library_1st
AP230	LIB	Library_3rd
AP230	POOL	Pool_1st
AP1130	QUAD	Quad_1st
AP1130	QUAD	Quad_1st
AP1130	QUAD	Quad_1st
AP1130	QUAD	Quad_1st
AP230	SC	Student_Center_4th
AP230	SC	Student_Center_3rd
AP230	SC	Student_Center_2nd
AP230	SC	Student_Center_4th
AP230	SC	Student_Center_3rd
AP230	SC	Student_Center_2nd
AP230	SC	Student_Center_4th
AP390	TH	Theater_1st
AP390	TH	Theater_1st
AP390	TH	Theater_1st
AP390	TH	Theater_1st
AP230	Theater	Theater_4th
AP230	Theater	Theater_4th
AP230	Theater	Theater 3rd
AP230	Theater	Theater 3rd
AP230	Theater	Theater_4th
AP230	Tower	Tower_7th
AP230	Tower	Tower_6th
AP230	Tower	Tower_8th
AP230	Tower	Tower_6th
AP230	Tower	Tower_2nd
AP230	Tower	Tower_4th
AP230	Tower	Tower_4th
AP230	Tower	Tower_7th
AP230	Tower	Tower_7th
AP230	Tower	Tower_5th
AP230	Tower	Tower_8th
AP230	Tower	Tower_3rd
AP230	Tower	Tower_5th
AP230	Tower	Tower_8th
AP230	Tower	Tower_2nd
AP230	Tower	Tower_5th

AP230	Tower	Tower_8th
AP230	Tower	Tower_4th
AP230	Tower	Tower_3rd
AP230	Tower	Tower_1st
AP230	Tower	Tower_3rd
AP230	Tower	Tower_6th
AP230	Tower	Tower_2nd
AP230	Tower	Tower_1st

3.3 Site Maps

See File: WLAN Design – Laney.pdf *also includes locations for new access points

3.4 New drop locations for labs *in addition to drops for new access points:

CTE Labs:

G100/ Machine Tech ---- 4

G153/Wood Tech ---- 25

G240/Arch/Eng/ConMt ---- 32

G270/Arch/Eng ----- 8

CIS Labs:

Each room (G271, 272, 273 and G274) will need at least eight more data drops. Total 32 in CIS

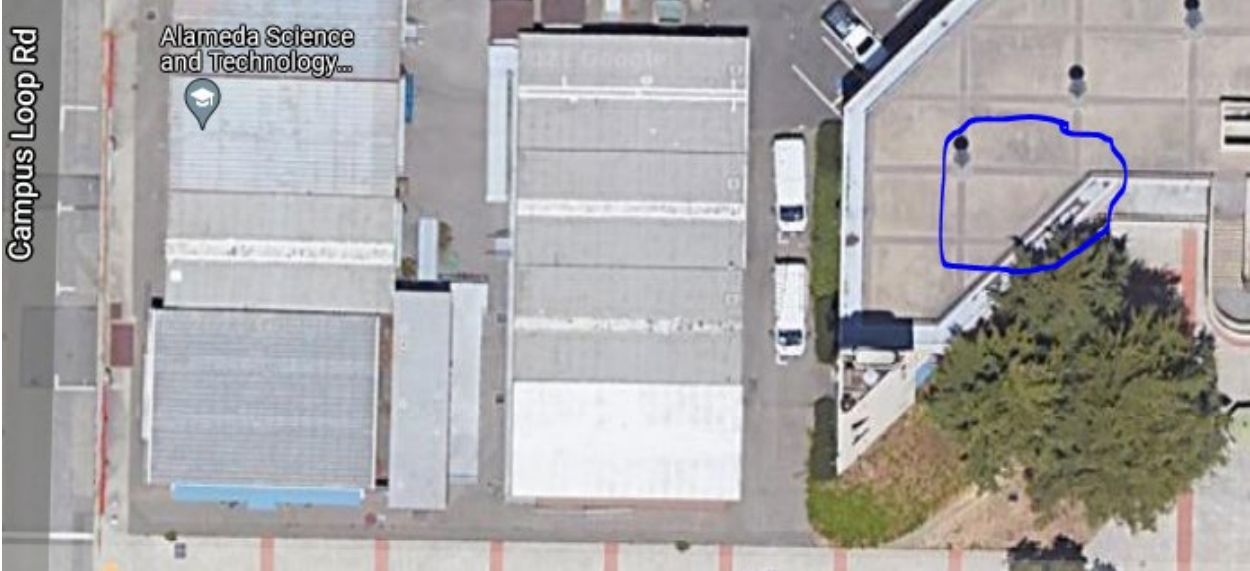
4.0 Merritt College

4.1 Grounds Keeper Building



5.0 College of Alameda

5.1 Maintenance Engineers Office



5.2 CoA Bookstore

