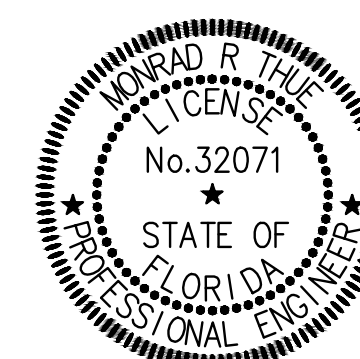


PLAN

1/4" = 1'-0"

PLAN NOTES:

1. SEE CIVIL DRAWINGS FOR ALL PLAN DIMENSIONS, SLOPES, AND TO COORDINATE TOP OF SLAB AND WALL ELEVATIONS.
2. SEE SECTIONS AND DETAILS FOR FOUNDATION SIZES AND REINFORCING.
3. SEE FOUNDATION NOTES ON G7 FOR INFORMATION ON FOUNDATION AND SLAB BEARING SURFACES.
4. SHEET PILE CAN EXTEND TO +18.00' DURING CONSTRUCTION AT CONTRACTOR'S OPTION. FINAL ELEVATION OF +8.00' SHALL BE ACHIEVED BY CUTTING OFF SHEET PILE OR ADDITIONAL DRILLING.
5. MINIMUM BOTTOM OF SHEET PILE TIP ELEVATION TO BE 25'-0" BELOW BOTTOM OF SLAB.



This item has been digitally signed and sealed by

on the date adjacent to the seal. Printed copies of this document are not considered signed and sealed and the signature must be verified on any electronic copies.



Engineering & Consulting, Inc.
5590 SW 64th Street, Suite B
Gainesville, Florida 32608
Phone: (352) 377-3233 Fax: (352) 377-0335

8/21/20	REV A	JMG	MRT	DESIGNED	M THUE
				DRAWN	J GALLER
				CHECKED	D CRAPPS
LTR.	DATE	REVISIONS	BY	APPRD.	

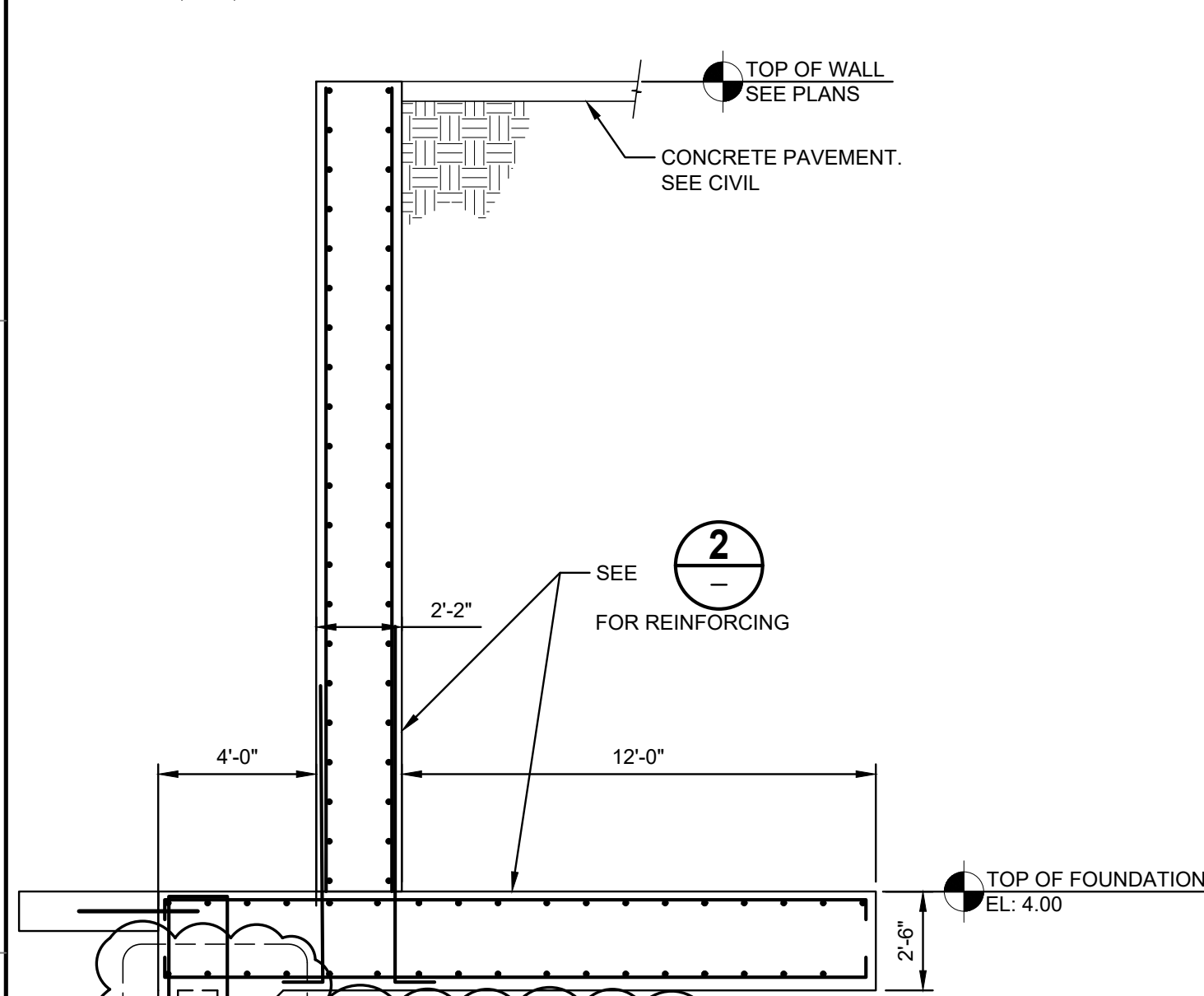
JonesEdmunds
CERTIFICATE OF AUTHORIZATION #1841
730 NE WALDO ROAD, GAINESVILLE, FLORIDA 32641 / (352) 377-5821
8657 BAYPINE ROAD SUITE 300, JACKSONVILLE, FL 32256 / (904) 744-5401

**CRANE CREEK M-1 CANAL FLOW RESTORATION
ST. JOHN'S RIVER WATER MANAGEMENT DISTRICT**

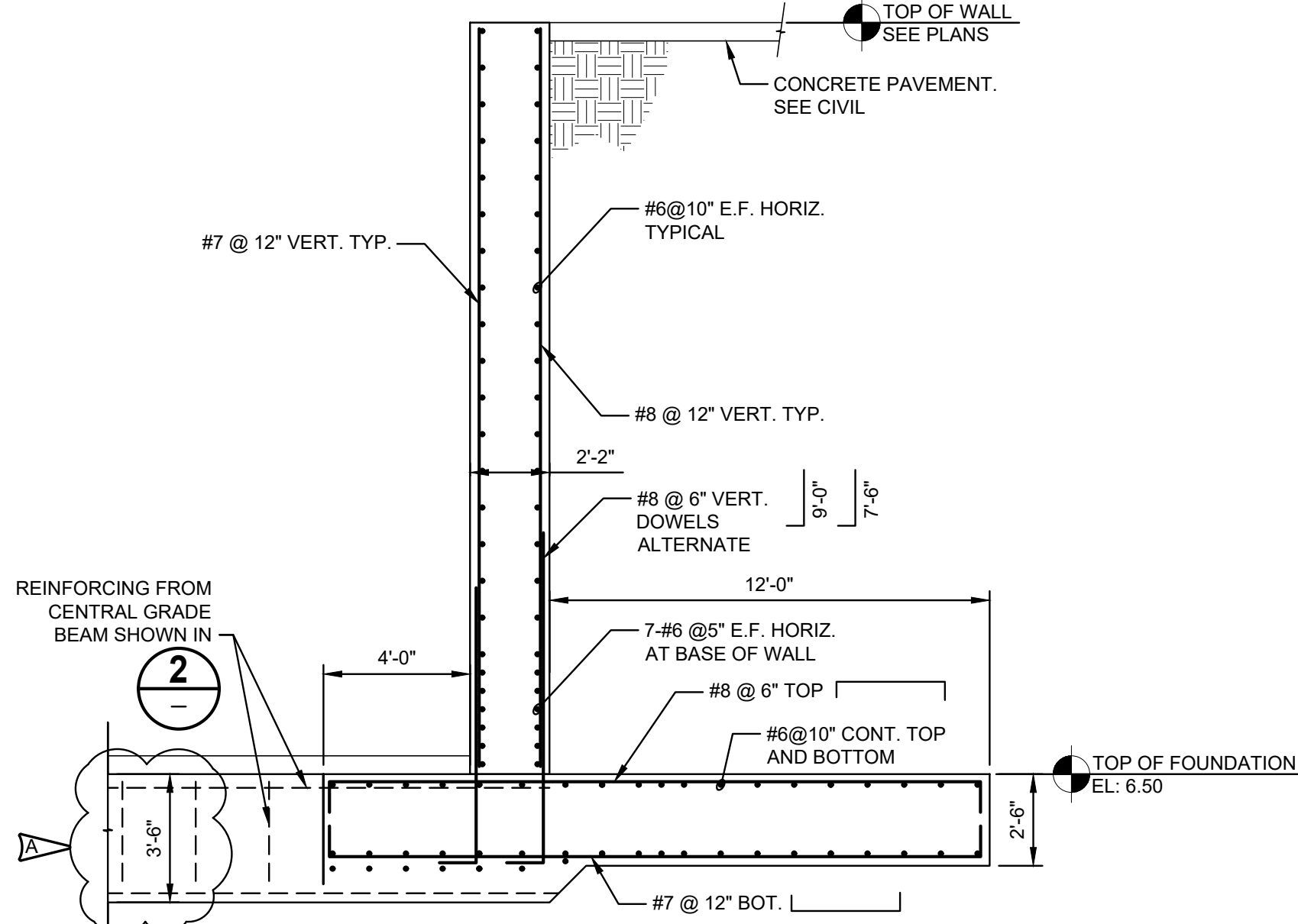
WEIR PLAN

CERTIFICATE OF AUTHORIZATION #1841	PROJECT NO:	DATE:
APPROVED BY	19750-066-01	AUG 2020
MONRAD R. THUE	INDEX NO:	DWG NO:
P.E. # 32071		S5-1

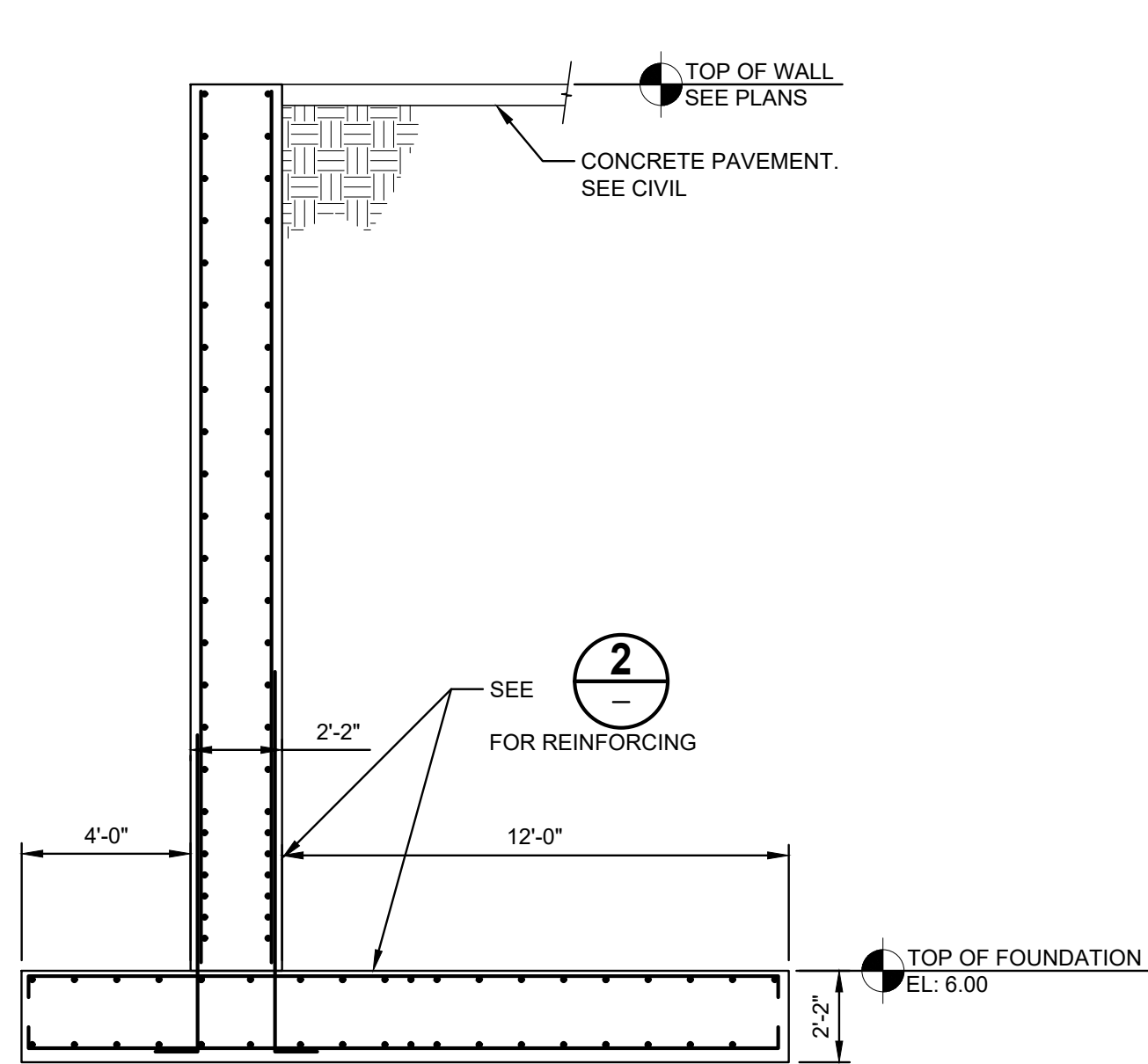
SAVED: 8/31/2020 2:57 PM JGALLER C:\USERS\JGALLER\GSEENGINEERING\DESKTOP\13972 M-1 CANAL RESTORATION.DWG



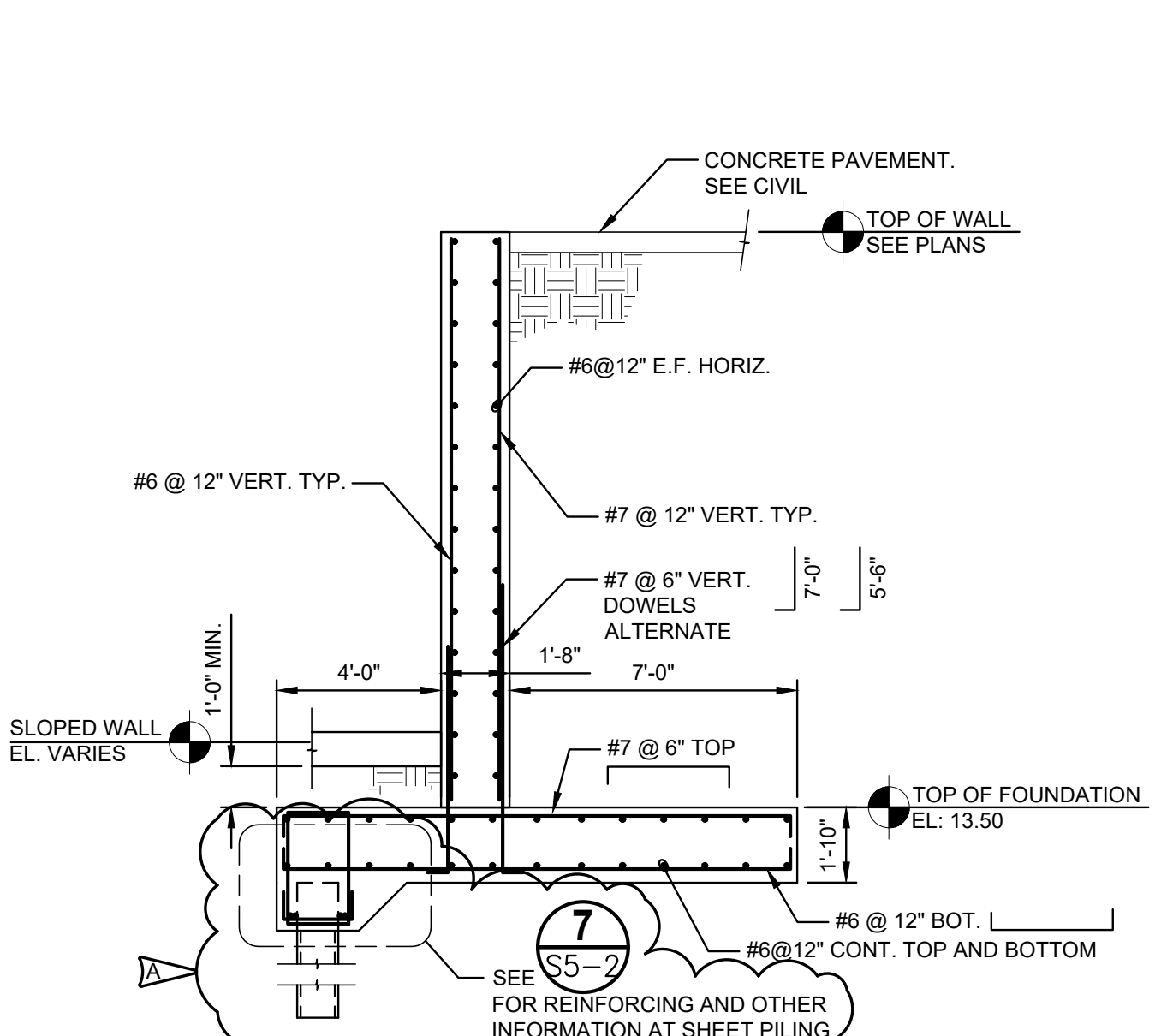
WALL SECTION 1
1/4" = 1'-0"
S5-2



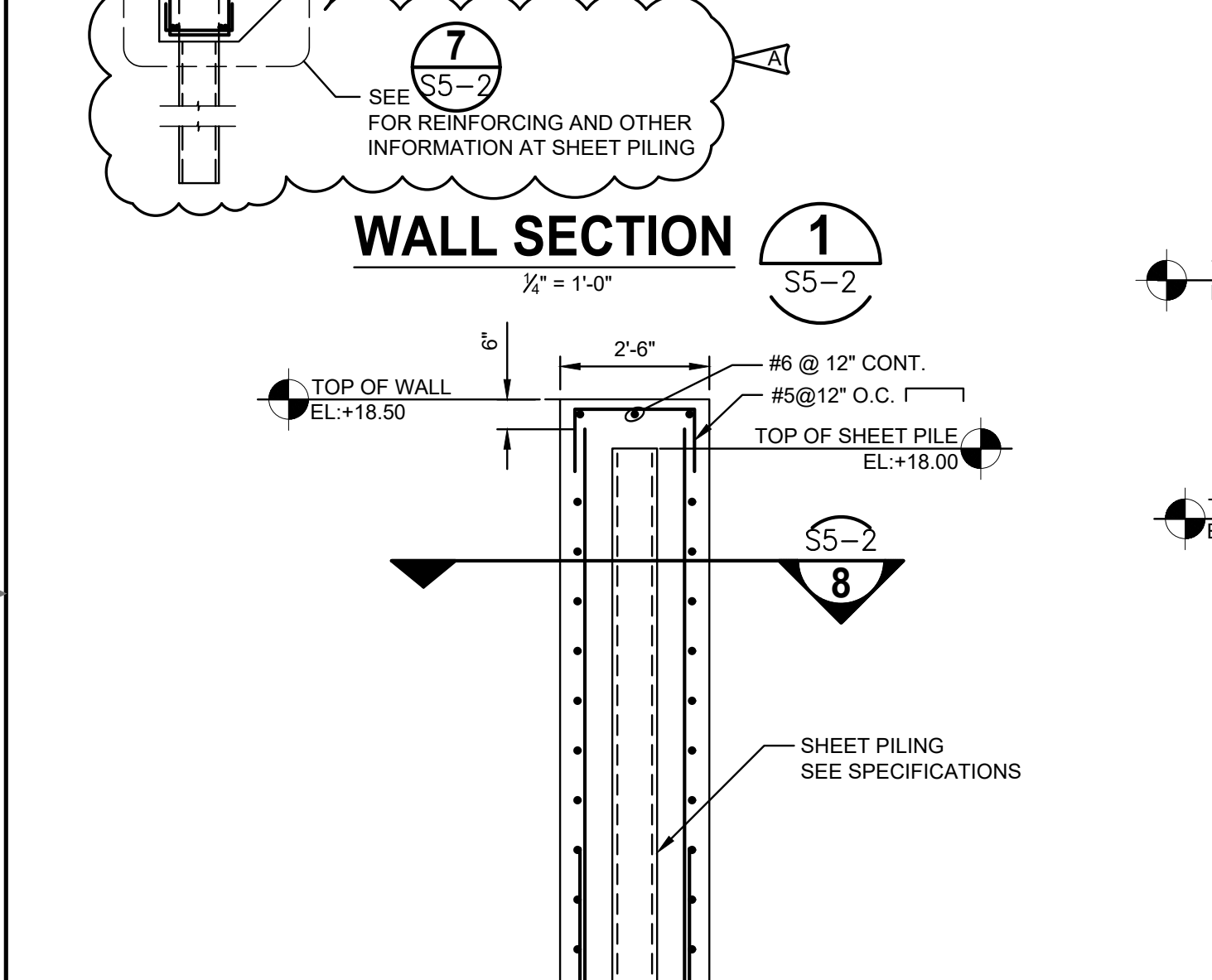
WALL SECTION 2
1/4" = 1'-0"
S5-2



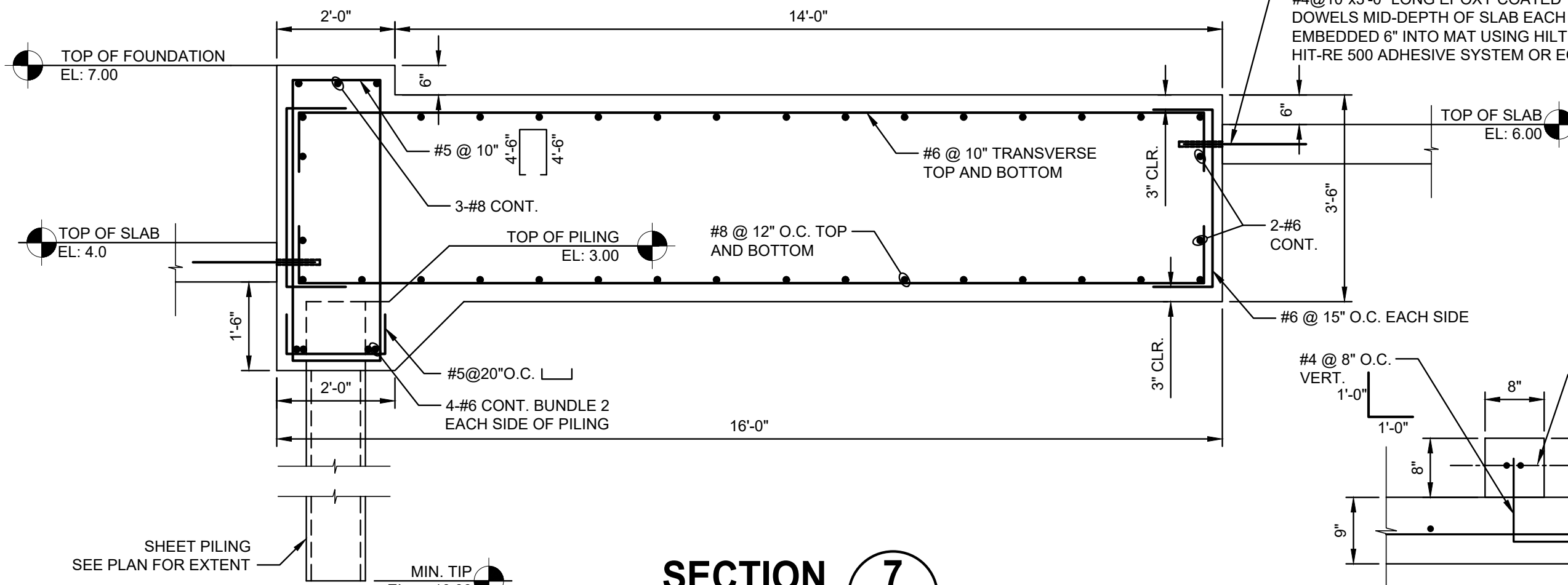
WALL SECTION 3
1/4" = 1'-0"
S5-2



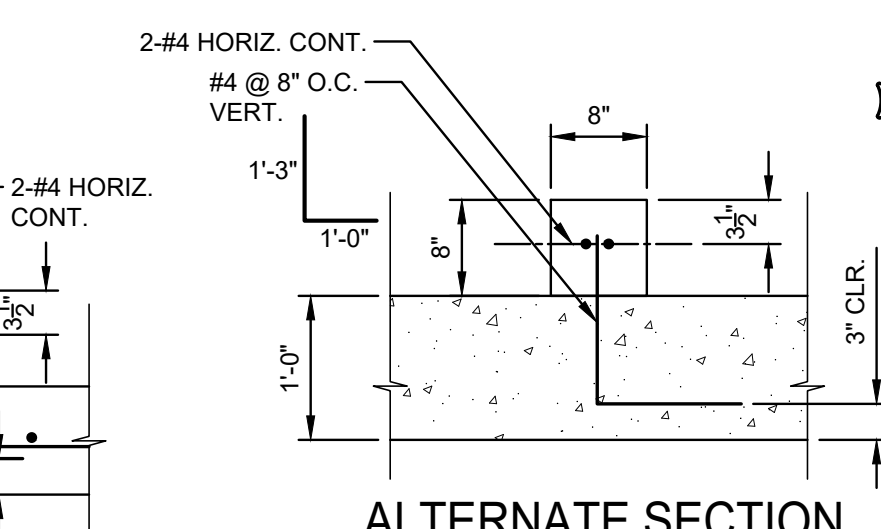
WALL SECTION 4
1/4" = 1'-0"
S5-2



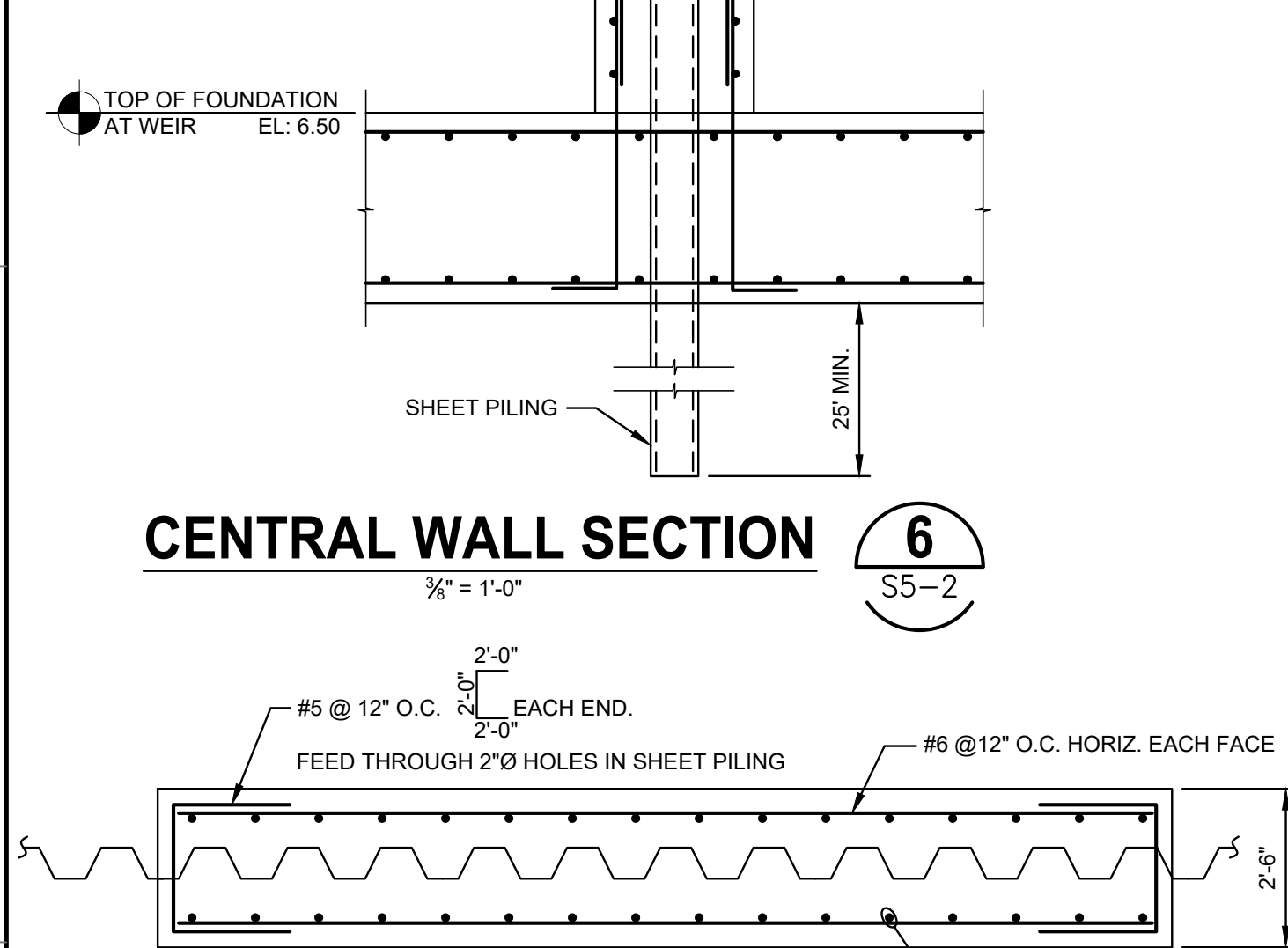
CENTRAL WALL SECTION 6
1/4" = 1'-0"
S5-2



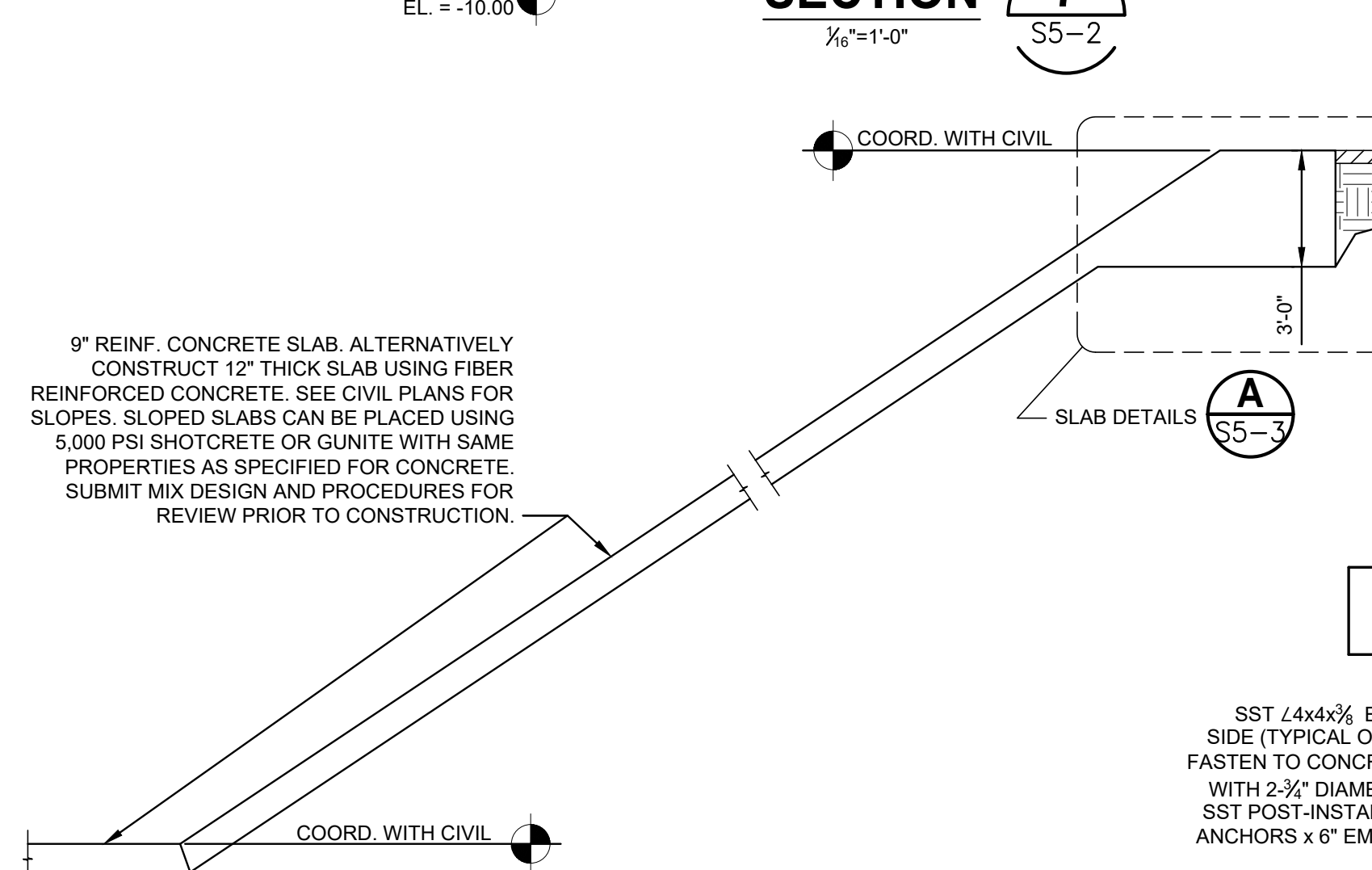
SECTION 7
1/4" = 1'-0"
S5-2



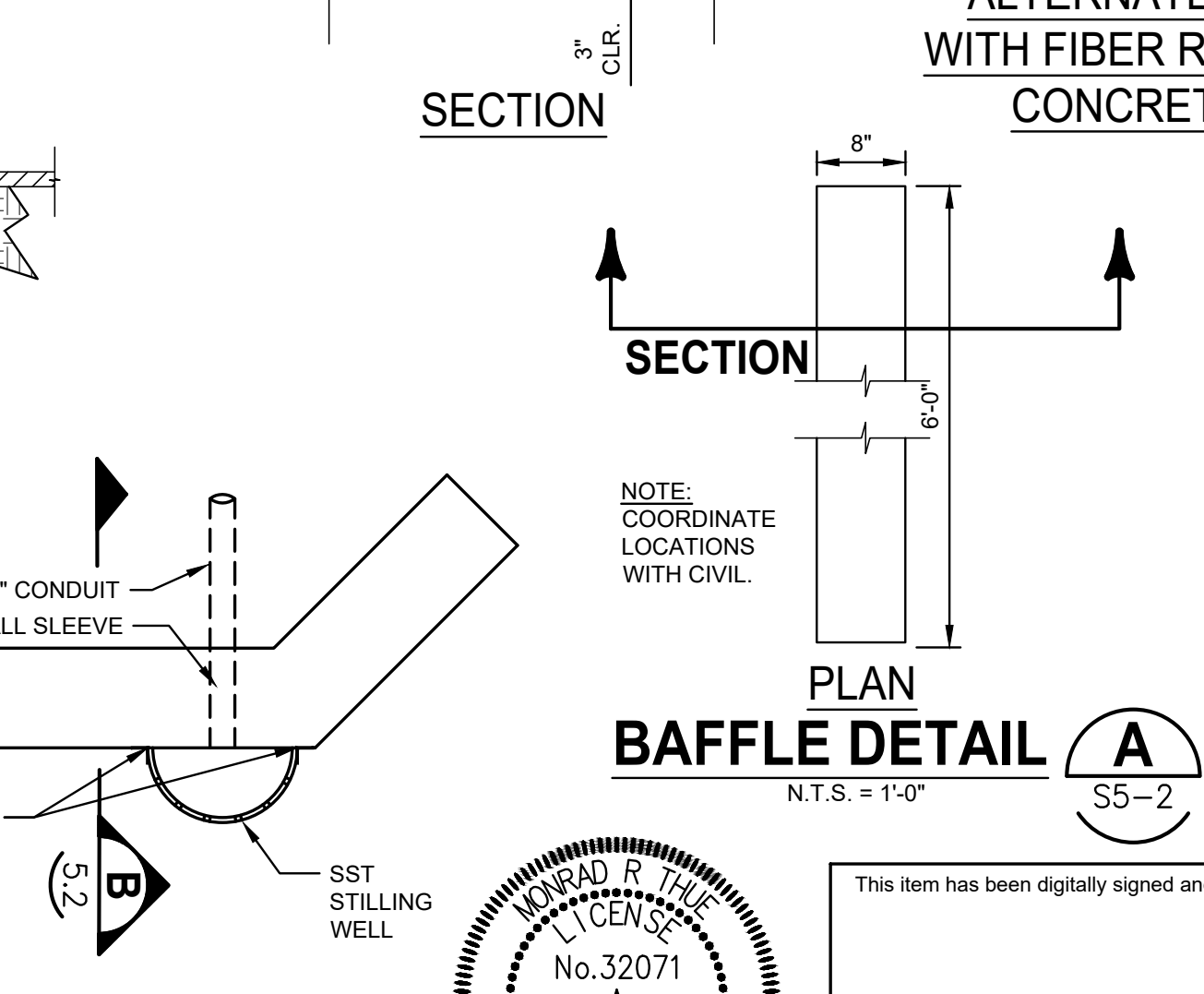
ALTERNATE SECTION WITH FIBER REINFORCED CONCRETE SLAB



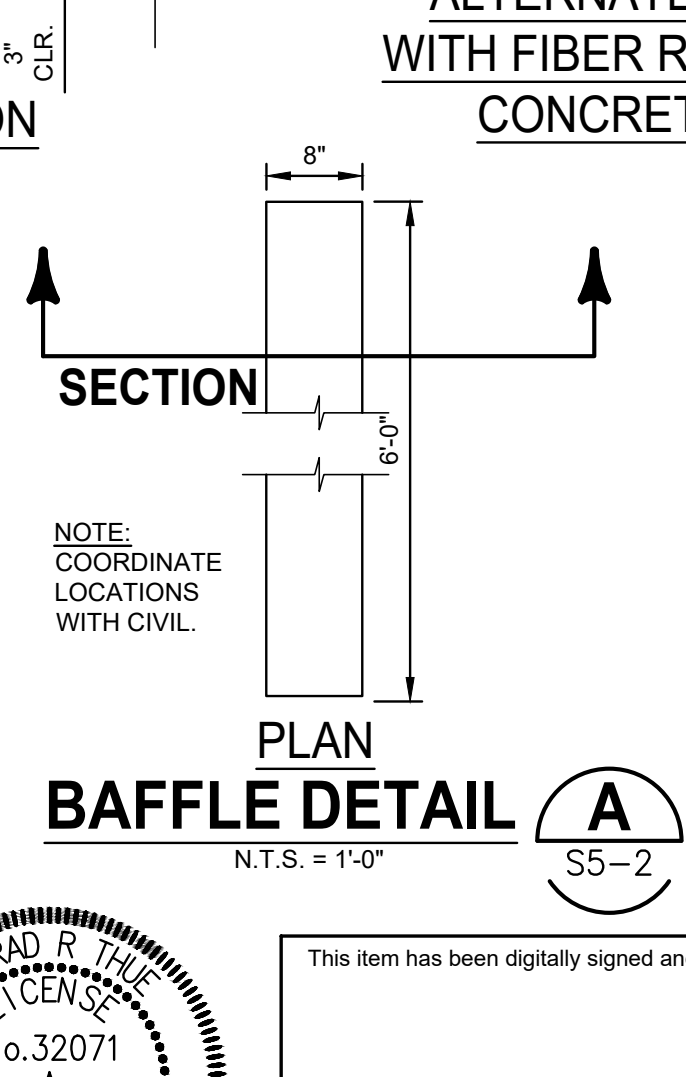
SECTION 8
1/4" = 1'-0"
S5-2



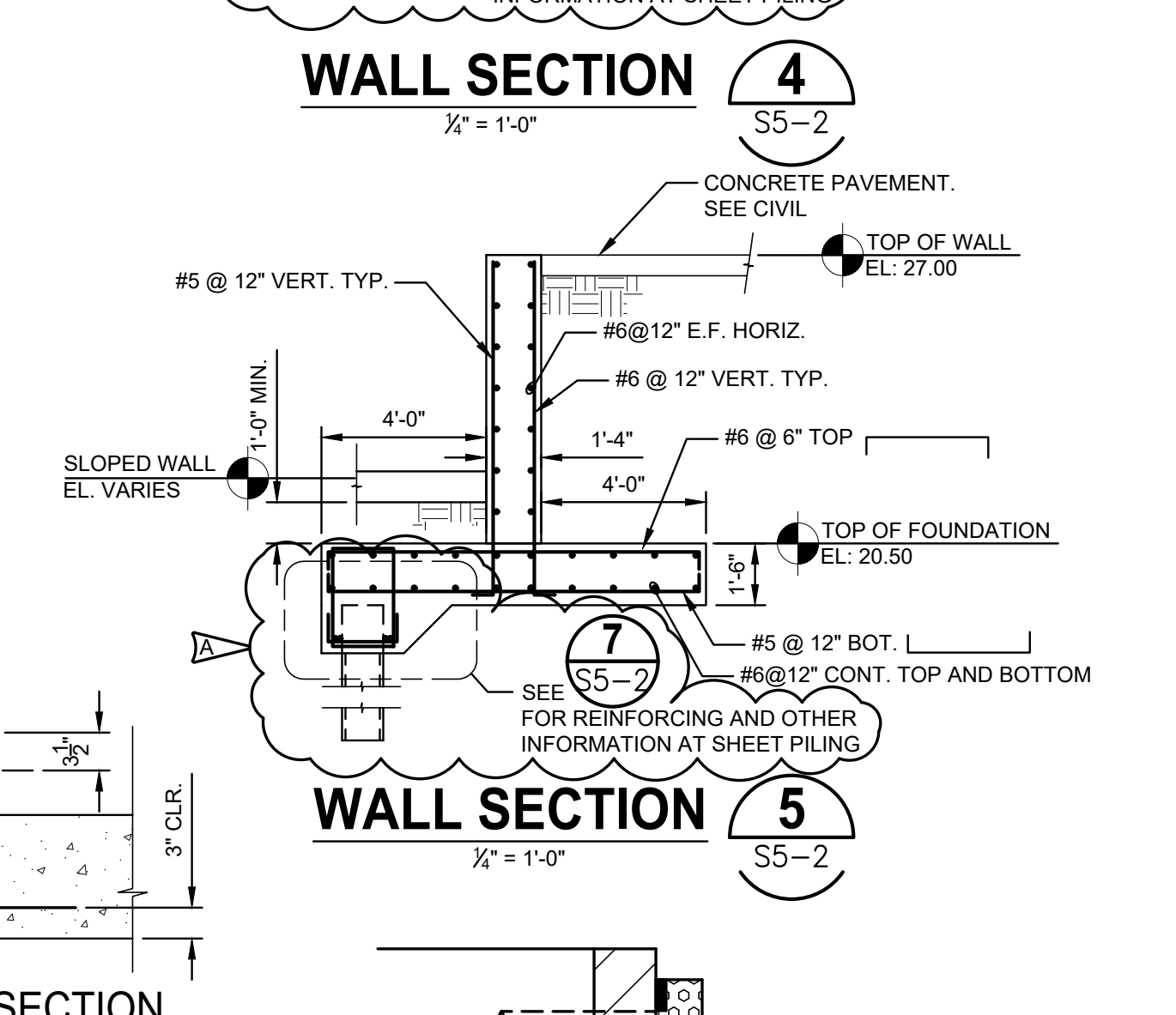
SECTION 9
1/4" = 1'-0"
S5-2



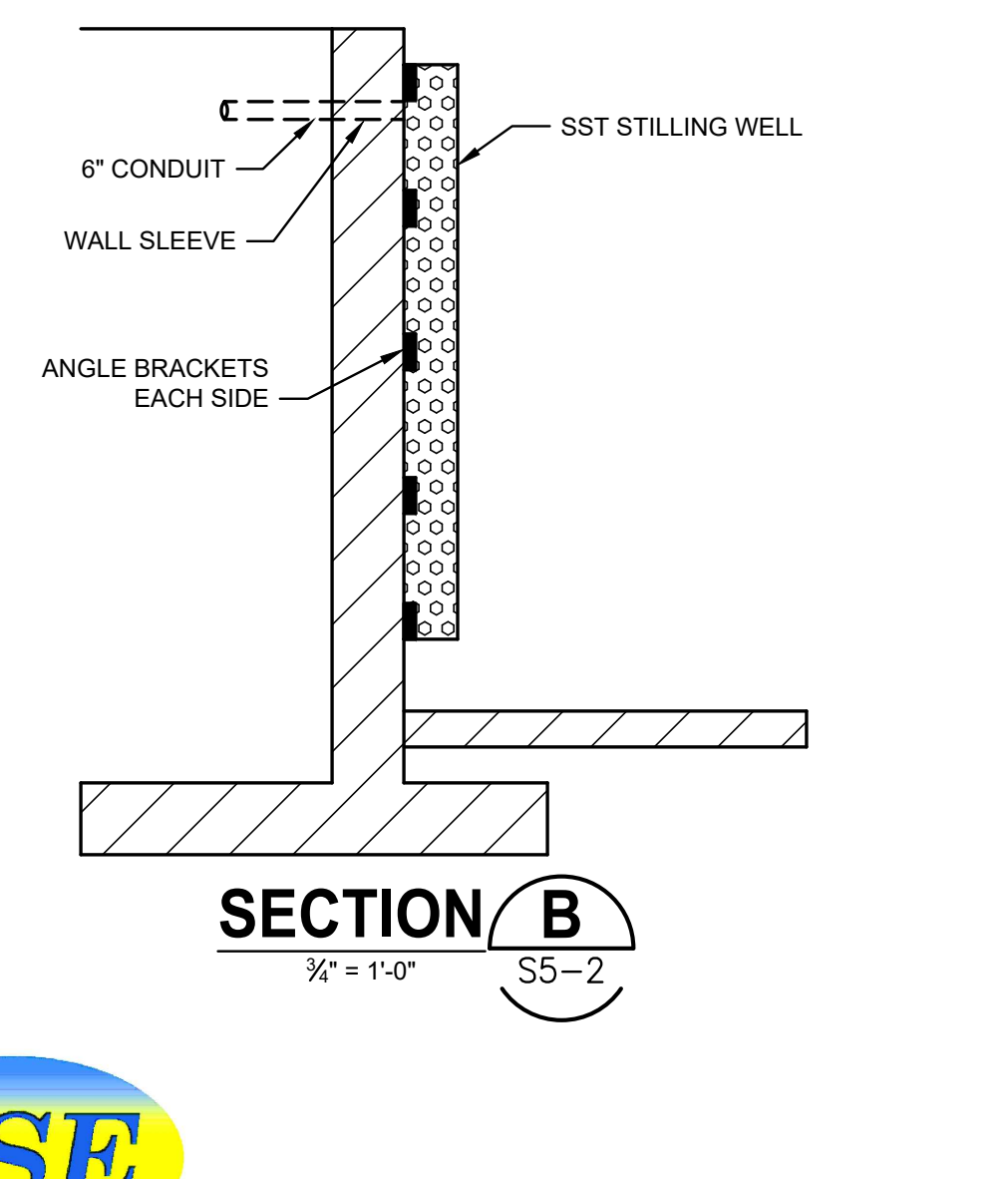
SECTION 10
NTS
S5-2



BAFFLE DETAIL A
N.T.S. = 1'-0"
S5-2



WALL SECTION 5
1/4" = 1'-0"
S5-2

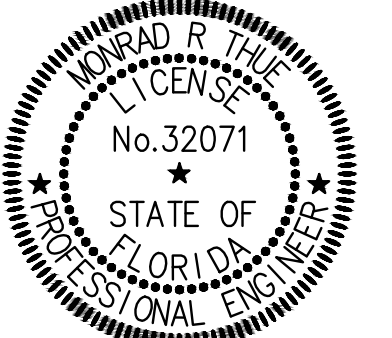


SECTION B
1/4" = 1'-0"
S5-2

8/21/20	REV A	JMG	MRT	DESIGNED	M THUE
				DRAWN	J GALLER
				CHECKED	D CRAPPS
LTR.	DATE	REVISIONS	BY	APPRD.	

JonesEdmunds
 CERTIFICATE OF AUTHORIZATION #1841
 730 NE WALDO ROAD, GAINESVILLE, FLORIDA 32641 / (352) 377-5821
 8657 BAYPINE ROAD SUITE 300, JACKSONVILLE, FL 32256 / (904) 744-5401

CRANE CREEK M-1 CANAL FLOW RESTORATION
ST. JOHN'S RIVER WATER MANAGEMENT DISTRICT



WEIR SECTIONS AND DETAILS

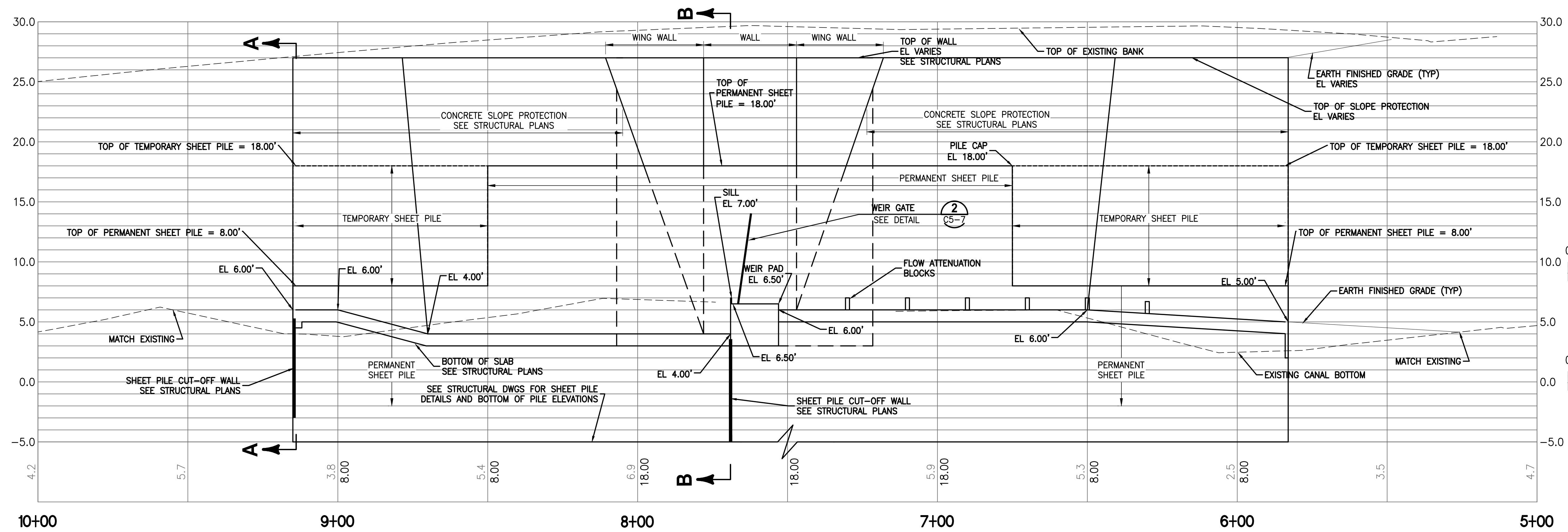
This item has been digitally signed and sealed by
 on the date adjacent to the seal. Printed copies of this document are not considered signed and sealed and the signature must be verified on any electronic copies.



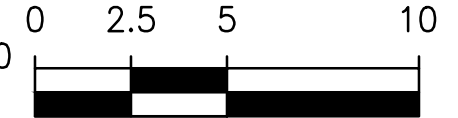
Engineering & Consulting, Inc.
 5590 SW 64th Street, Suite B
 Gainesville, Florida 32608
 Phone: (352) 377-3233 Fax: (352) 377-0335

CERTIFICATE OF AUTHORIZATION #1841	PROJECT NO:	DATE:
APPROVED BY	19750-066-01	AUG 2020
MONRAD R. THUE	INDEX NO:	DWG NO:
P.E. # 32071		S5-2

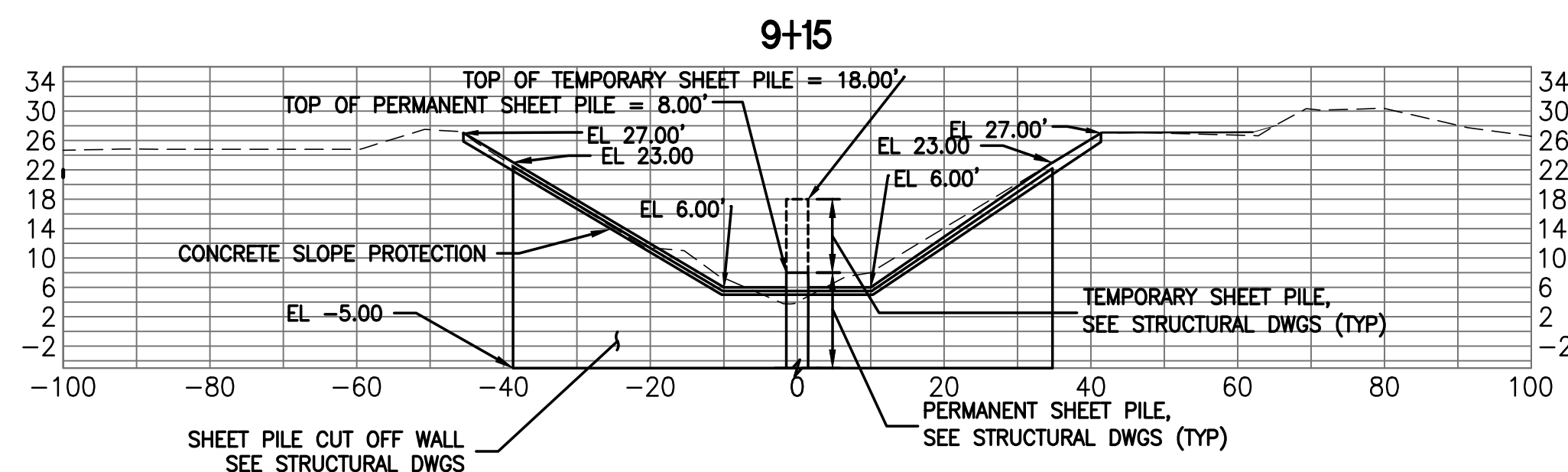
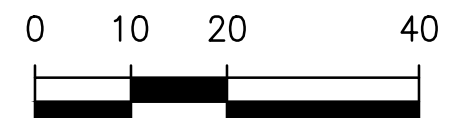
C:\USERS\GALLER\GSEENGINEERING\DESKTOP\13972 M-1 CANAL RESTORATION.DWG
 8/31/2020 2:57 PM JGALLER



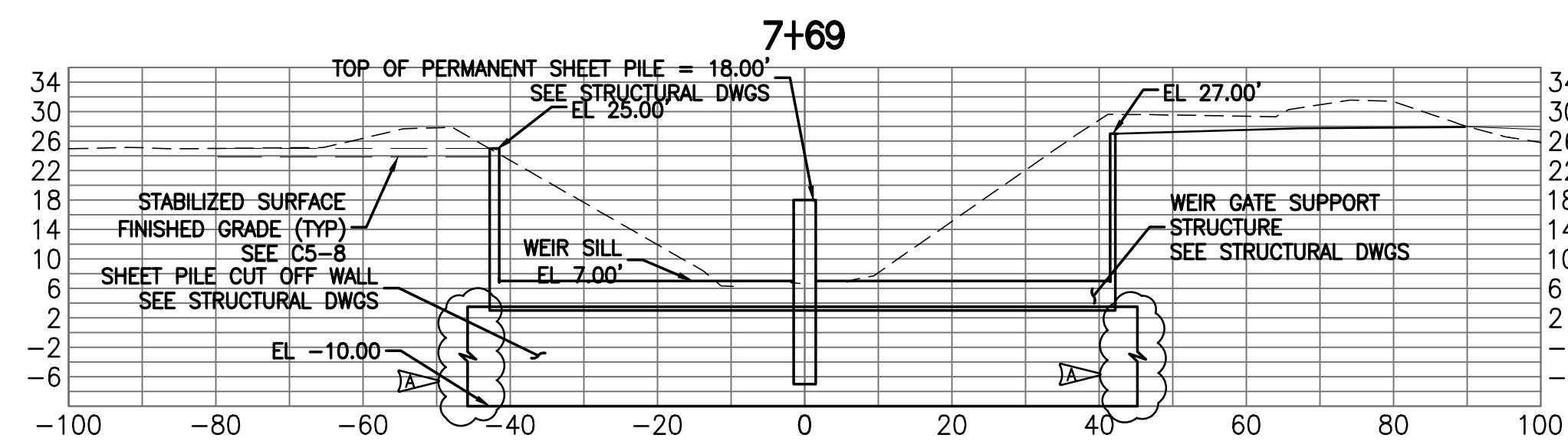
GRAPHIC SCALE



GRAPHIC SCALE

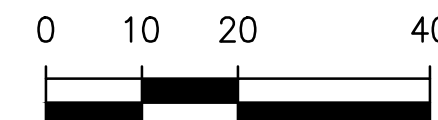


SECTION A-A

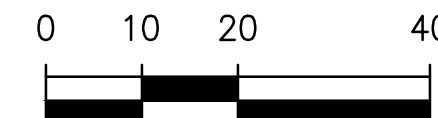


SECTION B-B

GRAPHIC SCALE



GRAPHIC SCALE



Y:\19750-SURMWD\PROJECTS\066-01_CRANE CREEK_M-1_FLOW_RESTORATION_DESIGN\CAD\DWGS\CIVIL\19750-066-01-C5-6.DWG
 8/31/2020 11:06 AM MIKE HOFFMAN

BID DOCUMENTS

LTR.	DATE	REVISIONS	BY	APPRD.
	8/2020	REVISION A	MKH	WAN

DESIGNED	W NICKEL
DRAWN	D HAUBRICH
CHECKED	R KOLLER

JonesEdmunds
 CERTIFICATE OF AUTHORIZATION #1841
 730 NE WALDO ROAD, GAINESVILLE, FLORIDA 32641 / (352) 377-5821
 8657 BAYPINE ROAD SUITE 300, JACKSONVILLE, FL 32256 / (904) 744-5401

**CRANE CREEK M-1 CANAL FLOW RESTORATION
 ST. JOHN'S RIVER WATER MANAGEMENT DISTRICT**

WEIR PROFILE

CERTIFICATE OF AUTHORIZATION #1841	PROJECT NO: 19750-066-01	DATE: AUG 2020
APPROVED BY W. NICKEL	INDEX NO:	DWG NO: C5-6
P.E. # 68638		