

**ADDENDUM THREE
AVONDALE YOUTH AND FAMILY DEVELOPMENT CENTER
SITE IMPROVEMENTS
CONTRACT NO. Y-15-008-203
CITY OF CHATTANOOGA, TENNESSEE**

The following changes shall be made to the Contract Documents, Specifications, and Drawings:

I. Change to Specifications

- A. REMOVE Section 02800 Drip Irrigation from the Contract Documents.**
- B. ADD Section 328400 -- Planting Irrigation to the Contract Documents (included in this Addendum).**

II. Revised Plans

- A. Revised drawings L-500, L-510, and L-550 are included in this Addendum.**

III. Q & A

Q: There are tennis courts shown on drawing page L-500. Does the scope of this bid include any work associated with these tennis courts? If so, please provide details and specifications.

A: Construction of new tennis courts at the corner of Dodson Avenue and Wilson Street is not part of this Contract. Landscaping for the new tennis courts also is not part of this Contract. However, construction of the new sidewalk on Dodson Avenue in this area will receive landscaping treatment at the street edge and lawn seeding on new slopes and disturbed areas.

Q: L-500 also indicates an area of artificial turf where the existing parking lot lies. Specifications for this surf system cannot be found in the documents. Please provide.

A: Artificial turf is no longer part of this Contract. This area shall receive topsoil and lawn seed mix.

Q: Is there an existing water meter for the proposed irrigation system and if so where is it located?

A: The location of existing 1" irrigation water meter is now indicated on the Landscaping plans (L-510).

Q: Section 02800, Drip Irrigation, references a water storage tank for filtered irrigation water. Who will be responsible for this tank and where will it be positioned on the site?

A: Section 02800 is hereby removed and replaced with 328400 Planting Irrigation.

November 1, 2019

/s/ Justin C. Holland, Administrator
City of Chattanooga
Department of Public Works

**SECTION 328400
PLANTING IRRIGATION**

PART 1 – GENERAL

1.01 SUMMARY

- A. Section Includes:
 - 1. Delegated Design

1.02 PERFORMANCE REQUIREMENTS

- A. Irrigation zone control shall be automatic operation with controller and automatic control valves. New irrigation zones shall be tied to existing controller and zones and be compatible with irrigation system design.
- B. Delegated Design: Design 100 percent coverage irrigation system, including comprehensive engineering analysis by a qualified professional engineer
- C. Refer to:
 - 1. Landscape design drawings and specifications
 - 2. Construction drawings for the site

1.03 ACTION SUBMITTALS

- A. Provide all submittals to Owner for review. Irrigation submittals to be reviewed by the Owner.
- B. Product Data: For each type of product indicated. Include rated capacities, operating characteristics, [electrical characteristics,] and furnished specialties and accessories.
- C. Wiring Diagrams: For power, signal, and control wiring.
- D. Shop Drawings: For full system design of irrigation system expansion. Including all piping and connection points. Include layout of all sprinklers and coverage.
- E. Sample warranties
- F. Delegated-Design Submittal: For irrigation systems indicated to comply with performance requirements and design criteria, including analysis data signed and sealed by the qualified professional engineer responsible for their preparation.
 - 1. The full system design for the irrigation system expansion and all required necessary components are the Contractor's responsibility. This includes all components and connections inside the building as well as the exterior portion of the sprinkler system.

SECTION 328400
PLANTING IRRIGATION

2. Ensure the system design is completed in a timely manner so that all system components can be properly integrated with the existing irrigation system.

1.04 INFORMATIONAL SUBMITTALS

- A. Zoning Chart: Show each irrigation zone and its control valve.
- B. Controller Timing Schedule: Indicate timing settings for each automatic controller zone.
- C. Field quality-control reports.

1.05 CLOSEOUT SUBMITTALS

- A. Operation and maintenance data.
- B. System training documentation

1.06 QUALITY ASSURANCE

- A. Electrical Components, Devices, and Accessories: Listed and labeled as defined in NFPA 70, by a qualified testing agency, and marked for intended location and application.
- B. Installer
 1. Shall be a CIC, certified irrigation contractor
 2. Shall have a minimum of 3 years' experience and shall be able to demonstrate successful completion of at least 3 systems of similar size and complexity. Successful completion shall include all landscaping grasses, plants and trees having been successfully established after planting and have thrived for a minimum of one year after substantial completion.

PART 2 -- PRODUCTS

2.01 Include an allowance of \$40,000 in the base bid to provide a sprinkler system

- A. Sprinkler system to provide sufficient zones and 100% coverage regardless if cost exceeds the allowance.

2.02 Provide all parts, labor and materials to furnish and install a complete, code compliant, and fully functional automatic sprinkler system.

- A. Refer to landscape drawings for graphic scope area definition.
 1. Landscaped and grass areas on site.

SECTION 328400
PLANTING IRRIGATION

- B. Provide all components including but not limited to:
 - 1. Connections, meters, panel boards, sleeving, and controls
 - 2. Connection points for system expansion
 - 3. All main and branch piping systems as required for proper water distribution
 - 4. Accessories
 - 5. Any and all other required components necessary for a complete and fully functional system.
- C. System shall:
 - 1. Use an existing water meter separate from the main facility meter
 - 2. Use an existing control panel so the system can function automatically, and provide additional controls as necessary for proper function. Provide time clock, if necessary, which can be set for multiple start times of varying durations throughout the day
 - a. New control panels shall have an overriding on / off switch so the system can be easily turned off if there are seasons when it is not needed. Such switch shall be connected to existing control panel on/off switches so all control panels can be turned off simultaneously, as needed.
 - b. Control panel to be able to address different zones independently
 - 3. Sprinkler heads or water dispersal system as approximate for each type of landscape space being irrigated
 - 4. Multiple zones. For each type of landscape area
- D. System shall be able to be connected to the larger system on site. Additional site work design is being prepared by the city. There will be additional irrigation system coverage on site.
 - 1. All components to be of similar quality and design as the irrigation system as designed by the city for the remainder of the site.
 - 2. Basis of Design: the same components as used in the Phase I construction of the YFD Center
- E. Coordinate with Ownership for required
 - 1. Irrigation zones
 - 2. Specific irrigation system requirements
 - 3. Types of sprinkler heads
 - 4. Integration with the additional system or future expansion of this system
 - 5. Irrigation requirements at playground area. Playground design TBD by owner. Extent or scope of irrigation at the playground TBD based on final design selection. Provide irrigation where required.
- F. Cleanly label each panel or switch which is part of the irrigation system. Provide permanent adhesive vinyl stickers or signage.
 - 1. Paper stickers are not acceptable. Handwritten labels are not acceptable.
- G. System shall be fully warranted for two years after the date of substantial completion.

**SECTION 328400
PLANTING IRRIGATION**

PART 3 -- EXECUTION

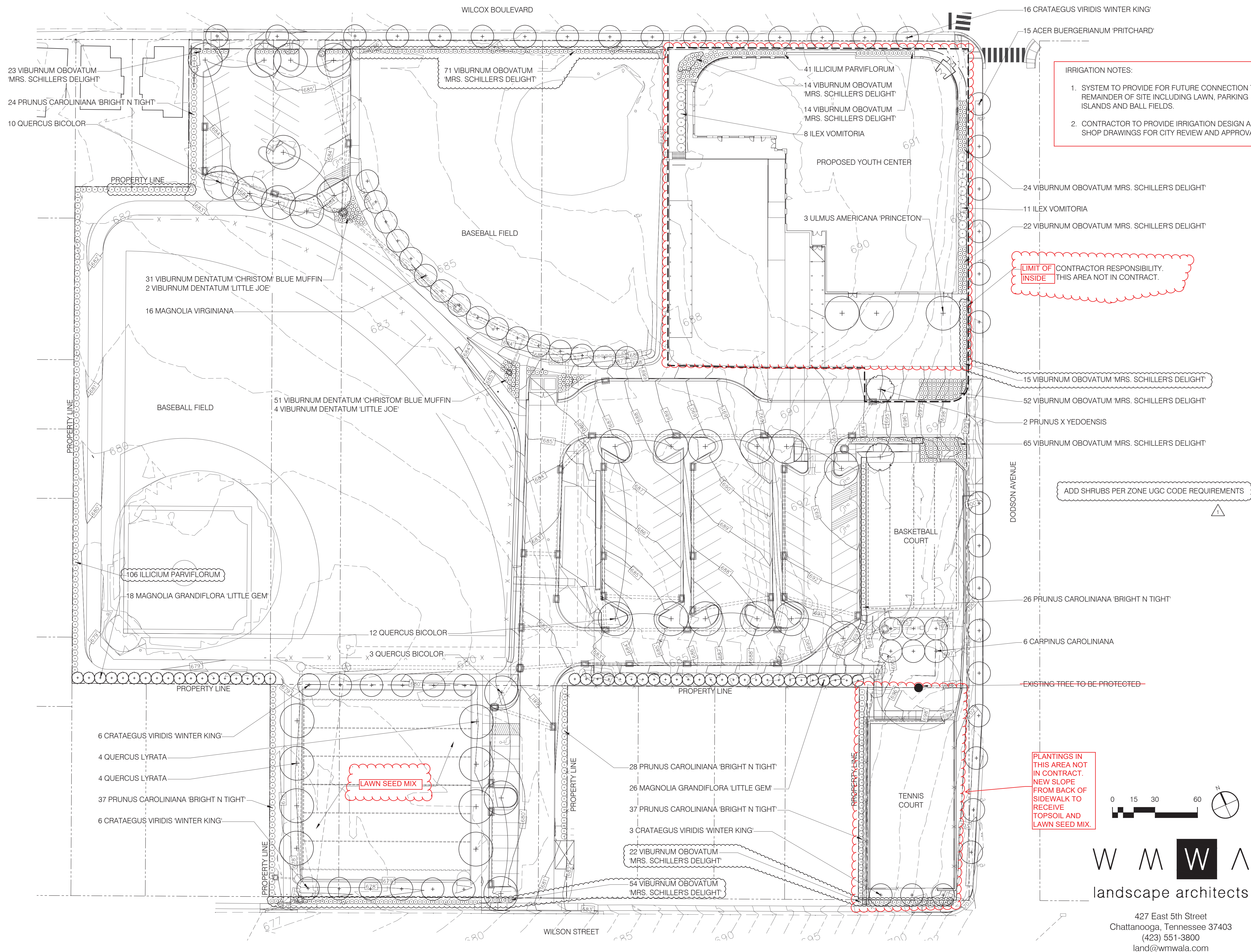
3.01 FIELD QUALITY CONTROL

- A. Perform all required tests and inspections.
- B. Tests and Inspections:
 - 1. Leak Test: After installation, charge system and test for leaks. Repair leaks and retest until no leaks exist.
 - 2. Operational Test: After electrical circuitry has been energized, operate controllers and automatic control valves to confirm proper system operation.
 - 3. Test and adjust controls and safeties. Replace damaged and malfunctioning controls and equipment.
- C. Any irrigation product will be considered defective if it does not pass tests and inspections.
- D. Prepare test and inspection reports.

3.02 ADJUSTING

- A. Adjust settings of controllers.
- B. Adjust automatic control valves to provide flow rate at rated operating pressure required for each sprinkler circuit.
- C. Adjust sprinkler coverage area.
 - 1. Sprinklers shall provide full coverage. Sprinklers shall not impede on the public way or over spray the building, driveways, walkways or other areas.
- D. Adjust sprinklers and devices, except those intended to be mounted aboveground, so they will be flush with, finish grade.

****END OF SECTION****



IRRIGATION NOTES:

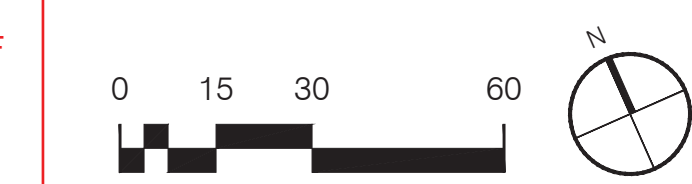
1. SYSTEM TO PROVIDE FOR FUTURE CONNECTION TO REMAINDER OF SITE INCLUDING LAWN, PARKING ISLANDS AND BALL FIELDS.
2. CONTRACTOR TO PROVIDE IRRIGATION DESIGN AND SHOP DRAWINGS FOR CITY REVIEW AND APPROVAL.

LIMIT OF INSIDE

CONTRACTOR RESPONSIBILITY. THIS AREA NOT IN CONTRACT.

ADD SHRUBS PER ZONE UGC CODE REQUIREMENTS

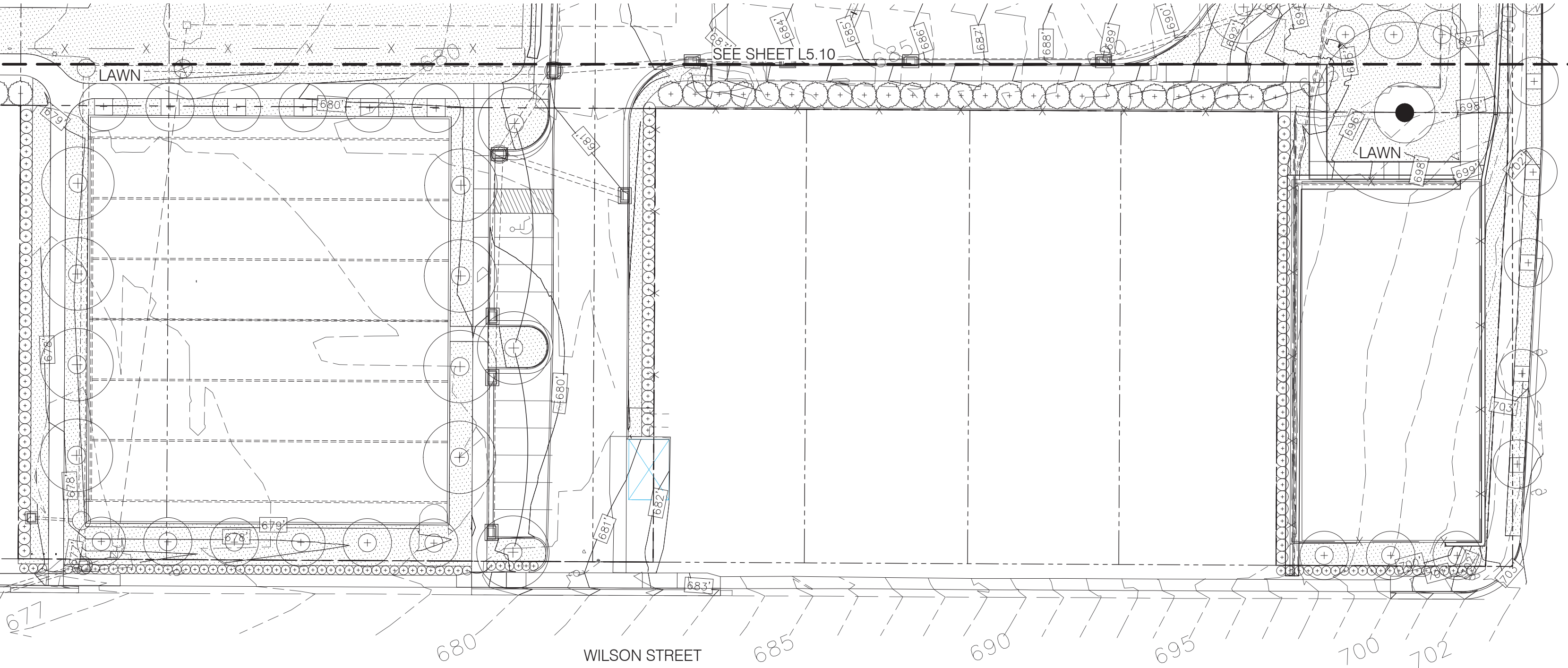
PLANTINGS IN THIS AREA NOT IN CONTRACT. NEW SLOPE FROM BACK OF SIDEWALK TO RECEIVE TOPSOIL AND LAWN SEED MIX.



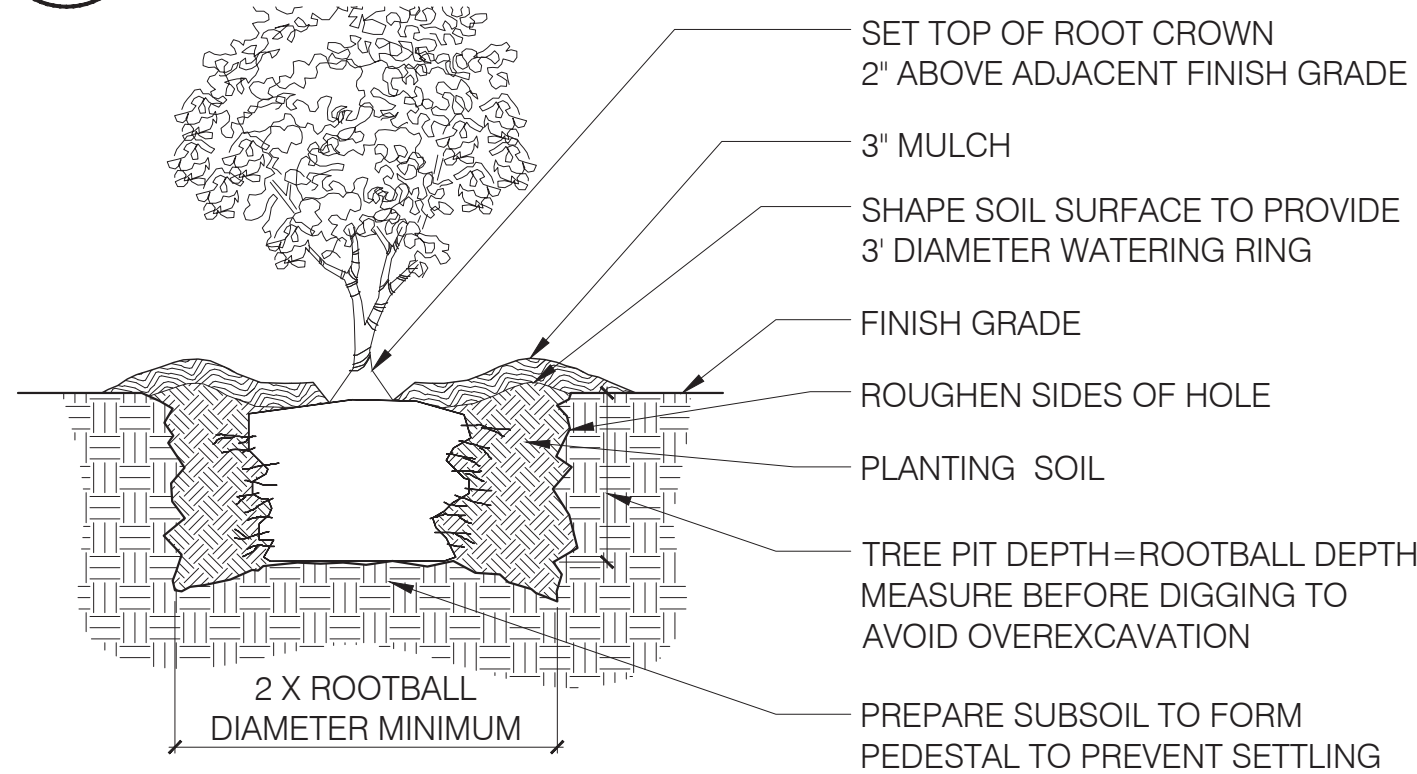
W M W A
landscape architects

427 East 5th Street
Chattanooga, Tennessee 37403
(423) 551-3800
land@wmwala.com

LEGEND:



1 PERENNIAL PLANTING PLAN
L550 SCALE: 1" = 30'-0"



NOTES:

- FOR CONTAINER SHRUBS PULL OR WASH POTTING MIX AND ROOT MAT APART TO DIRECT THE OUTER ROOTS INTO THE ADJACENT SOIL. DO NOT LEAVE CIRCLING ROOTS AGAINST THE ROOT BALL.
- FOR BALL AND BURLAP SHRUBS REMOVE TOP 1/3 OR ENTIRE BURLAP FROM ROOTBALL AND REMOVE ALL TWINE, ROPE AND CORDS PRIOR TO PLANTING.

3 SHRUB PLANTING
L550 SCALE: 1/2" = 1'-0"

4 PERENNIAL PLANTING
L550 SCALE: 1/2" = 1'-0"

PLANT SCHEDULE

Quantity	Scientific Name	Common Name	Spacing*	Size	Condition	Notes
TREES						
15	<i>Acer buergerianum</i> 'Pritchard'	Pritchard Trident Maple	As Shown	6-7' Ht.	B&B	
6	<i>Carpinus caroliniana</i>	American Hornbeam	As Shown	6-7' Ht.	B&B	
31	<i>Crataegus viridis</i> 'Winter King'	Green Hawthorne	As Shown	6-7' Ht.	B&B	
16	<i>Magnolia virginiana</i>	Sweet Bat Magnolia	As Shown	6-7' Ht.	B&B	
2	<i>Prunus x yedoensis</i>	Flowering Cherry	As Shown	6-7' Ht.	B&B	
25	<i>Quercus bicolor</i>	Swamp White Oak	As Shown	2' Cal.	B&B	
8	<i>Quercus lyrata</i>	Overcup Oak	As Shown	2' Cal.	B&B	
3	<i>Ulmus americana</i> 'Princeton'	Princeton American Elm	As Shown	2' Cal.	B&B	
SHRUBS						
19	<i>Ilex vomitoria</i>	Yaupon Holly	As Shown	7 Gal.	Cont.	
147	<i>Illicium parviflorum</i>	Small Anise Tree	4'-0" O.C.	3 Gal.	Cont.	
44	<i>Magnolia grandiflora</i> 'Little Gem'	Large-Flowered Magnolia	As Shown	7 Gal.	Cont.	
152	<i>Prunus caroliniana</i> 'Bright N Tight'	Bright N Tight Carolina Laurel	4'-0" O.C.	5 Gal.	Cont.	
82	<i>Viburnum dentatum</i> 'Christom'	Blue Muffin Viburnum	3'-0" O.C.	3 Gal.	Cont.	
9	<i>Viburnum dentatum</i> 'Little Joe'	Little Joe Viburnum	3'-0" O.C.	3 Gal.	Cont.	
376	<i>Viburnum obovatum</i> 'Mrs. Schiller's Delight'	Mrs. Schiller's Delight Viburnum	3'-0" O.C.	3 Gal.	Cont.	
PERENNIALS/GRASSES						
2,533	<i>Panicum virgatum</i> 'Cape Breeze'	Cape Breeze Switch Grass	1'-6" O.C.	Plugs	Plugs	
2,449	<i>Sporobolus heterolepis</i>	Prairie Dropseed	1'-0" O.C.	Plugs	Plugs	

* Plant spacing is provided as a guide. Use full quantities of plants shown on drawings.

2 TREE PLANTING
L550 SCALE: 1/2" = 1'-0"



LAWN SEED MIX

Minimum application rate shall be approximately 300 pounds per acre (7 lbs/1000 sf)			
Lawn Area ≈ 70,000 SF			
Seed Type	% By Weight	% Purity	% Germination
Hard Fescue	20%	98%	85%
Turf-Type Tall Fescue	70%	98%	90%
Perennial Rye Grass	10%	98%	85%

SEED ALL DISTURBED AREAS NOT ADDRESSED BY PLANTING PLAN

ADD SHRUBS PER ZONE UGC CODE REQUIREMENTS

W M W A
landscape architects

427 East 5th Street
Chattanooga, Tennessee 37403
(423) 551-3800
land@wmwala.com

HK

HEFFERLIN + KRONENBERG ARCHITECTS
1216 East Main Street, Suite 120
Chattanooga, TN 37408
Tel 423 266 3656 Fax 423 266 3357

AVONDALE
YOUTH AND
FAMILY
DEVELOPMENT
CENTER

1305 DODSON AVE, CHATTANOOGA TN
37406

SHEET HISTORY

05/16/18 PERMIT REVS

CONSTRUCTION
DOCUMENTS



ALL DRAWINGS AND WRITTEN MATERIAL CONSTITUTE ORIGINAL WORK OF THE ARCHITECT AND MAY NOT BE DUPLICATED, USED, OR DISCLOSED WITHOUT CONSENT OF THE ARCHITECT.
©HEFFERLIN + KRONENBERG ARCHITECTS
ALL RIGHTS RESERVED

DATE: 9/6/17
JOB#: 16-057
SCALE: AS SHOWN
DRAWN: MES

PLANTING
DETAILS

L-550