

ADDENDUM NUMBER ONE (001)

Date: March 22, 2019

Project: City of Portales
Portales Fire Substation Rebid
Chief Procurement Officer
100 West 1st Street
Portales, NM 88130
WHPacific Project Number: P0014007W
City of Portales Project Number: ITB: #2019-03-10

From: WHPacific, Inc.
6501 Americas Parkway NE, Suite 400
Albuquerque, New Mexico 87110

To: Prospective Bidders

This Addendum forms a part of the Contract Documents and modifies or supplements the Project Manual or the Drawings as indicated below. All other provisions of the Contract Documents shall remain unchanged. This Addendum is hereby made a part of the Contract Documents to the same extent as those provisions contained in the original documents and all itemized listings thereof. Bidders shall acknowledge receipt of this Addendum in the appropriate space on the Lump Sum Bid Proposal form.

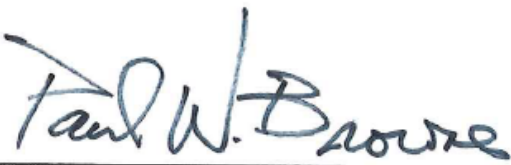
The following clarifications, corrections, revisions, or additions shall be incorporated into the Plans and Specifications for the above project:

1. **GENERAL:**
 - a. **Clarification:** The Architect's estimate for the Work: \$1,335,165.00
2. **CHANGES TO SPECIFICATIONS:**
 - a. **Correction:** SECTION 083613–SECTIONAL DOORS, Paragraph 2.8 E. Revise paragraph as follows: "Track configuration: Standard lift track or lift clearance track. Coordinate clearance requirements with all pendant mounted ceiling devices and terminations."
3. **CHANGES TO DRAWINGS:**
 - a. **Correction:** Sheet G-001, Index of Drawings, delete the following: "18. S-004 Special Inspection Tables".
 - b. **Correction:** Sheet C-503, Detail 6, provide 6" SDR-35 PVC drain pipe.
 - c. **Clarification:** Sheet C-400, wall mounted post indicator valve was called out on the drawing, please refer to keynote #28 for post indicator valve location.
 - d. **Revision:** Sheet S-101 FOUNDATION PLAN


1. A1/S-101: **Delete** Base plate marks for Pre-Engineered building columns.
See sketch SKS-01 and SKS-02
2. A1/S-101: **Add** Base plate mark for HSS6x6x5/8 column at
Grid 7 and Grid K. See sketch SKS-02
- e. **Clarification:** Sheet S-111, Under the General Sheet Notes, note #10 indicates
“All perimeter and load bearing structural wall studs shall be 600S162-54 @ 16”
on center unless noted otherwise. Keynote #13 refers specifically to a portion of
the building wall and is marked on the plan. “Structural wall studs shall be
600S162-54 @ 12” on center” at this location.
- f. **Revision:** Sheet S-311 FOUNDATION SECTIONS
 1. B4/S-311: **Add** Reinforcing 3-#3 Ties within top 5”, See sketch SKS-05
 2. B4/S-311: **Add** Reinforcing #3 Ties at 10” on center, See sketch SKS-05
 3. C4/S-311: **Add** Reinforcing 3-#3 Ties within top 5”, See sketch SKS-04
 4. C4/S-311: **Add** Reinforcing #3 Ties at 10” on center, See sketch SKS-04
 5. C2/S-311: **Add** Reinforcing 3-#3 Ties within top 5”, See sketch SKS-03
 6. C2/S-311: **Add** Reinforcing #3 Ties at 10” on center, See sketch SKS-03
- g. **Revision:** Sheet S-312 FOUNDATION SECTIONS AND DETAILS
 7. B3/S-311: **Add** Reinforcing 3-#3 Ties within top 5”, See sketch SKS-06
 8. B3/S-311: **Add** Reinforcing #3 Ties at 10” on center, See sketch SKS-06
 9. B3/S-311: **Add** Reinforcing vertical reinforcement with standard hook.
See sketch SKS-06
- h. **Revision:** Sheet S-322 ROOF FRAMING SECTIONS AND DETAILS
 10. B3/S-311: **Add** Reinforcing 3-#3 Ties within top 5”, See sketch SKS-07
 11. B3/S-311: **Add** Reinforcing #3 Ties at 10” on center, See sketch SKS-07
 12. B3/S-311: **Add** Reinforcing vertical reinforcement with standard hook.
See sketch SKS-07
- i. **Clarification:** Sheet A-201, the prefinished standing seam metal roof referenced
in keyed note #2 and keyed note #14 shall be uniform and have the same profile
and same color for all portions of the building.
- j. **Clarification:** Sheet A-201, the 1.5” prefinished, concealed fastener metal wall
panel referenced in keyed note #13 is to be uniform and have the same profile and
color for all portions of the building.
- k. **Clarification:** Sheet A-201, coordinate dimensions from the floor plans, building
sections, and wall sections for metal wall panel and standing seam metal roof
material quantities.
- l. **Clarification:** Sheet M-601, Rooftop Unit Schedule: Update MCA to 42.4 and
MOCP to 50 Max Fuse Size.
- m. **Correction:** Sheet E-101, Light Fixture Types L4 and L4E should be L1 and
L1E.
- n. **Correction:** Sheet E-101, delete General Note B.
- o. **Correction:** Sheet E-102, add General Note C to read: All 120V receptacles in
Apparatus Bay 113 shall be GFCI type, with weatherproof in-use covers.
- p. **Correction:** Sheet E-102, eliminate junction boxes shown in Room 108 (one box)
and Room 113 (two boxes).
- q. **Clarification:** Sheet E-104, the computer rack in Keyed Note 6 should be
furnished under this contract.

- r. **Correction:** Sheet E-105, revise Keyed Note 1 to read: 1”C, 3#6, 1#10G.
 - s. **Correction:** Sheet E-601, Light Fixture Types FP and LS are not used.
 - t. **Correction:** Sheet E-601, make circuit A-39 (Welder) and A-60 (Air Compressor) GFI type breakers.
 - u. **Correction:** Sheet E-601, change Type B fixture to: Description = High Bay LED Pendant, wet location, die-cast aluminum. Light Source = LED, 22,000 lumens, 80 CRI. Manufacturer = Philips Lighting #HCX-22L-840-UNV. Energy = 161 watts.
 - v. **Correction:** Sheet E-701, revise Keyed Note 1 to read: To pole mounted transformers. Transformers and terminations by utility company. See Sheet C-400 for location.
 - w. **Correction:** Sheet E-701, revise Keyed Note 13 to read: 130kW/160kVA nominal, emergency natural gas generator, see Sheet C-400 for location.
 - x. **Correction:** Sheet E-701, revise Keyed Note 14 to read: 2-3”C, each with 4#350kcmil, 1#2 GND.
 - y. **Correction:** Sheet E-701, eliminate references to cable tray – no cable tray on this project.
 - z. **Correction:** Sheet E-701, under Deductive Alternate #2, add 6.7 – Lights in Apparatus Bay.
4. **ATTACHMENTS:**
- a. Mandatory Prebid Meeting Sign In Sheet.
 - b. SKS-01, SKS-02, SKS-03, SKS-04, SKS-05, SKS-06, SKS-07

WHPacific, Inc.

By 
Paul Browne, AIA, MBA, PMP
Project Manager

City of Portales

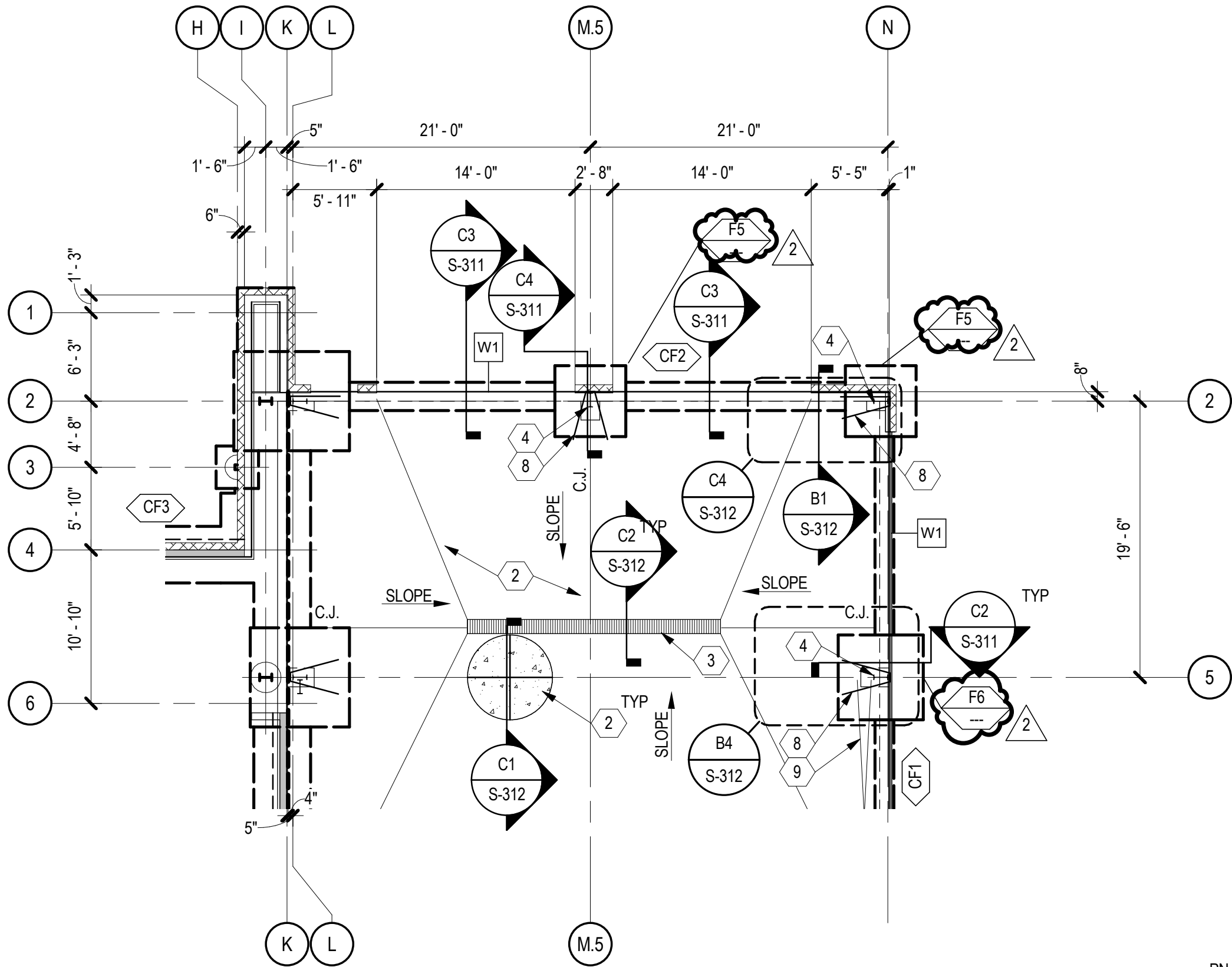
By 
Carla Weems
Chief Procurement Officer

END OF ADDENDUM NUMBER ONE (001)

100 W. 1st Street, Portales, NM 88130

PLEASE PRINT					
Name	Title	Company	Phone	Fax	E-Mail
Jason Queener	Owner	JQ Air & Electric	575-749-9436	575-482-3640	jqaiair@icloud.com
Garry Nuekols	Chief	Portales FD City	575-760-4889		
Carla Weens	CPD	City of Portales	359-4852		cweens@portalesnm.gov
Trey Southern	Rep.	Western Com. Ind.	575-644-0437		
BRITNEY BOWERS	ESTIMATOR	K. BARNETT	(515) 702-4407		brnnee@kbarnett.com
Ortiz Spinks	Service Tech	JQ Air & Electric	575-749-9436		Jqaiair@icloud.com
Sammy Stander	city manager	City of Portales	575-777-4039		sstander@portalesnm.gov

A2 **FOUNDATION PLAN**
SCALE: 1/8" = 1'-0"



**NOT FOR
CONSTRUCTION**

**CITY OF PORTALES
FIRE SUBSTATION**
CITY OF PORTALES

REVISIONS		
MARK	DATE	REVISION
2	09/07/2018	Addendum 002

AR	1/8" = 1'-0"
KM	
S-101	09/07/2018

**FOUNDATION
PLAN**

SKS-01
of

NOT FOR
CONSTRUCTION

**CITY OF PORTALES
FIRE SUBSTATION**
CITY OF PORTALES

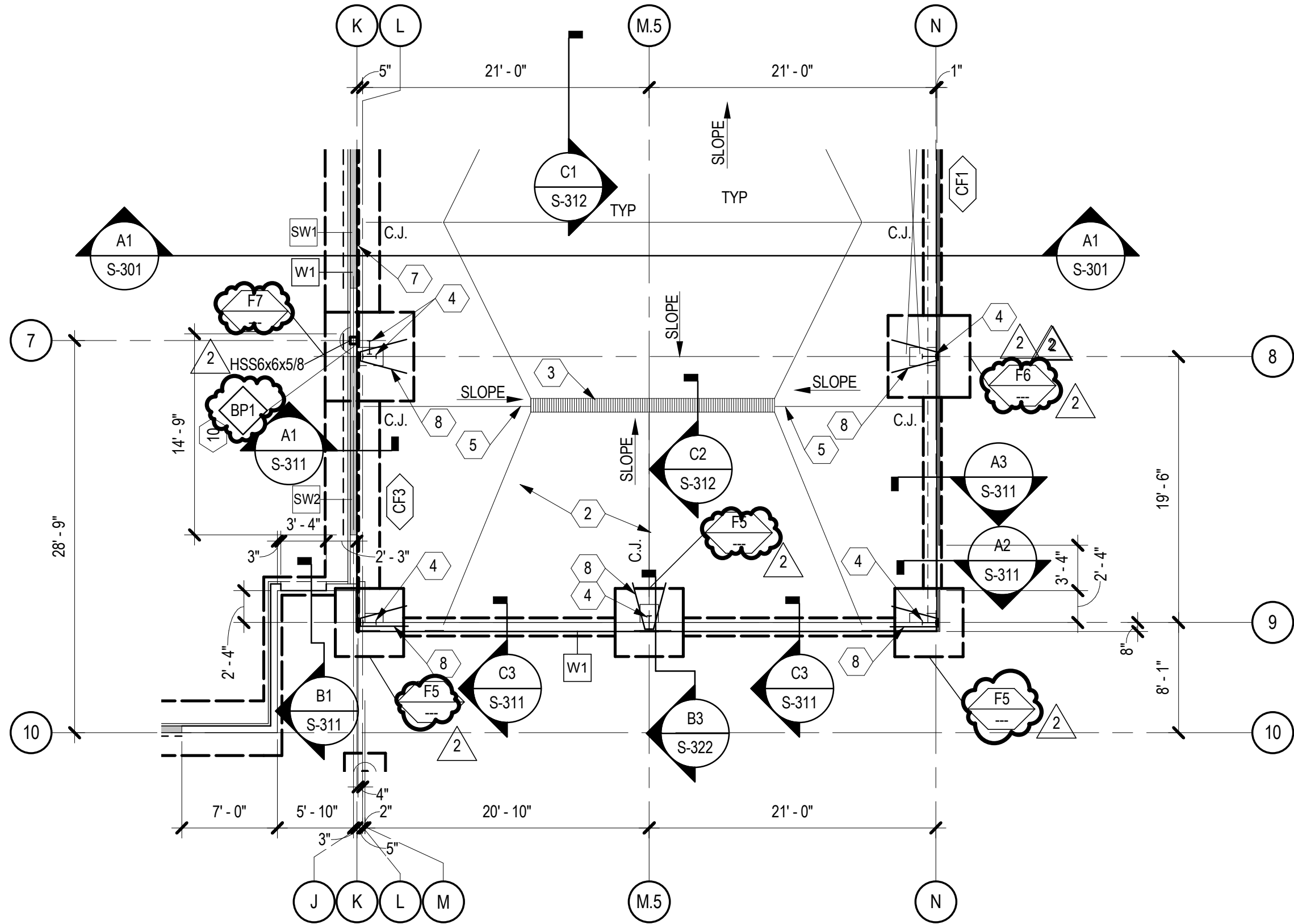
REVISIONS		
MARK	DATE	REVISION
2	09/07/2018	Addendum 002

AR	1/8" = 1'-0"
KM	
S-101	09/07/2018

FOUNDATION
PLAN

SKS-02
of

A2 **FOUNDATION PLAN**
SCALE: 1/8" = 1'-0"





Chavez-Grieves
consulting engineers, inc.
4700 Lincoln Road NE, Suite 102, Albuquerque, NM 87109
505-344-4080 · 505-343-8759 (fax)

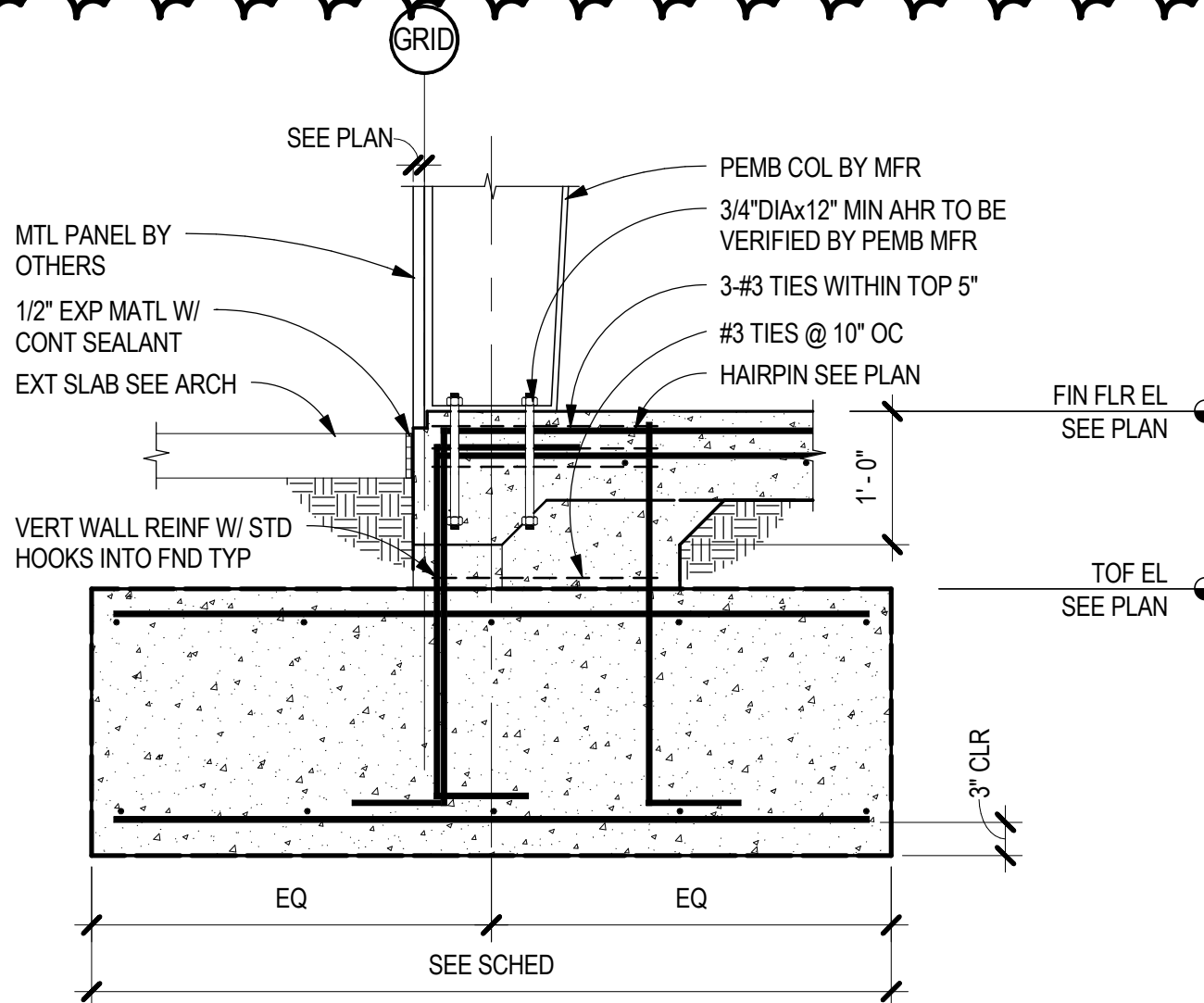
CITY OF PORTALES FIRE SUBSTATION

CITY OF PORTALES

AR	3/4" = 1'-0"
KM	
S-311	09/07/2018

FOUNDATION
SECTION

SKS-03
of



C2

FOUNDATION SECTION

SCALE: 3/4" = 1'-0"





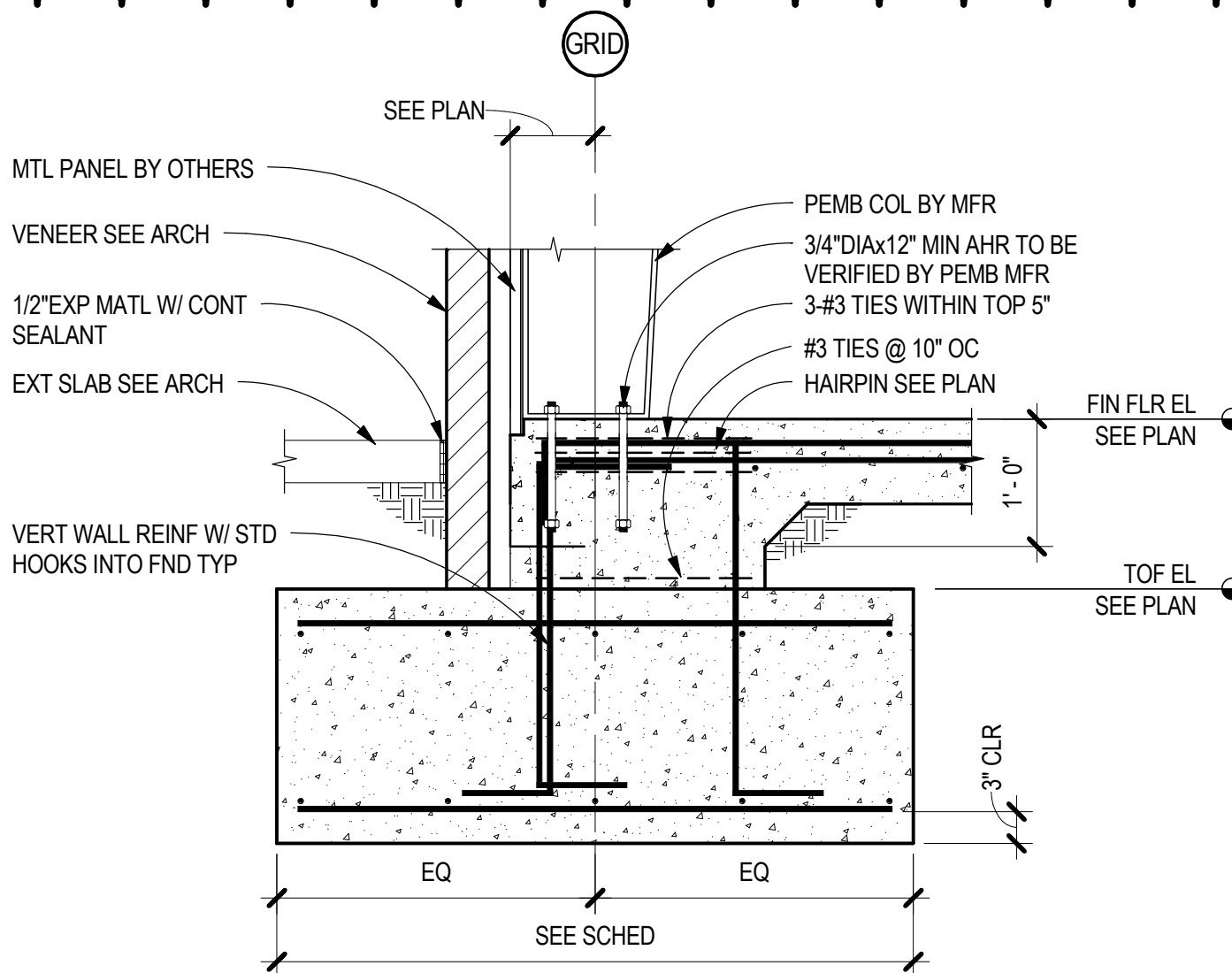
CITY OF PORTALES FIRE SUBSTATION

CITY OF PORTALES

DESIGNED BY:	AR	SCALE:	3/4" = 1'-0"
DRAWN BY:	KM	DWG. NUMBER:	
SHEET REF:	S-311	DATE:	09/07/2018

FOUNDATION
SECTION

SKS-04



C4

FOUNDATION SECTION

SCALE: 3/4" = 1'-0"



2



Chavez-Grieves
consulting engineers, inc.
4700 Lincoln Road NE, Suite 102, Albuquerque, NM 87109
505-344-4080 505-343-8759 (fax)

CITY OF PORTALES FIRE SUBSTATION

CITY OF PORTALES

AR	3/4" = 1'-0"
KM	
S-311	09/07/2018

FOUNDATION
SECTION

SKS-05
of

GRID

600S162-54 @ 16" OC

B2

S-531

30# FELT JOINT

FIN FLR EL
SEE PLAN

SCHED BASE PL
W/ AHR BOLTS

TOF EL
SEE PLAN

2" NON-SHRINK GROUT

VERT WALL REINF W/ STD
HOOKS INTO FND TYP

PEMB COL BY MFR

3/4"DIAx12" MIN AHR TO BE
VERIFIED BY PEMB MFR

3-#3 TIES WITHIN TOP 5"

#3 TIES @ 10" OC

HAIRPIN SEE PLAN

1'-0"

3" CLR

EQ

EQ

SEE SCHED

B4

FOUNDATION SECTION

SCALE: 3/4" = 1'-0"





Chavez-Grieves
consulting engineers, inc.
4700 Lincoln Road NE, Suite 102, Albuquerque, NM 87109
505-344-4080 505-343-8759 (fax)

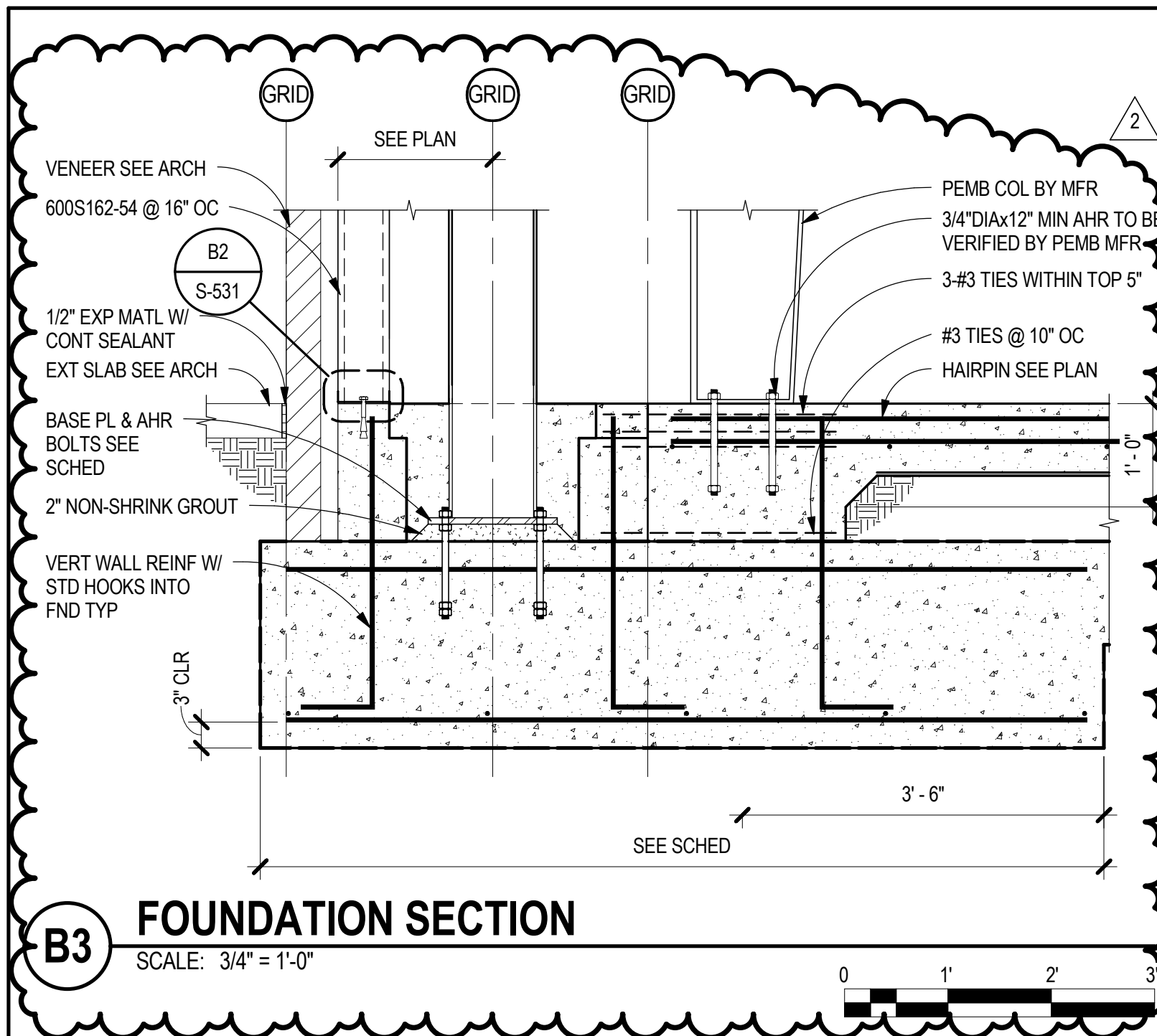
CITY OF PORTALES FIRE SUBSTATION

CITY OF PORTALES

AR	3/4" = 1'-0"
KM	
S-312	09/07/2018

FOUNDATION
SECTION

SKS-06
of





Chavez-Grieves
consulting engineers, inc.
4700 Lincoln Road NE, Suite 102, Albuquerque, NM 87109
505-344-4080 · 505-343-8759 (fax)

CITY OF PORTALES FIRE SUBSTATION

CITY OF PORTALES

AR	3/4" = 1'-0"
KM	
S-322	09/07/2018

FOUNDATION
SECTION

SKS-07
of

MTL PANEL BY OTHERS

1/2" EXP MATL W/ CONT
SEALANT

EXT SLAB SEE ARCH

VERT WALL REINF W/ STD
HOOKS INTO FND TYP

GRID

SEE PLAN

PEMB COL BY MFR

3/4" DIA x 12" MIN AHR TO BE
VERIFIED BY PEMB MFR

3-#3 TIES WITHIN TOP 5"

#3 TIES @ 10" OC

HAIRPIN SEE PLAN

FIN FLR EL
SEE PLAN

TOF EL
SEE PLAN

EQ

EQ

SEE SCHED

3" CLR

B3

FOUNDATION SECTION

SCALE: 3/4" = 1'-0"

