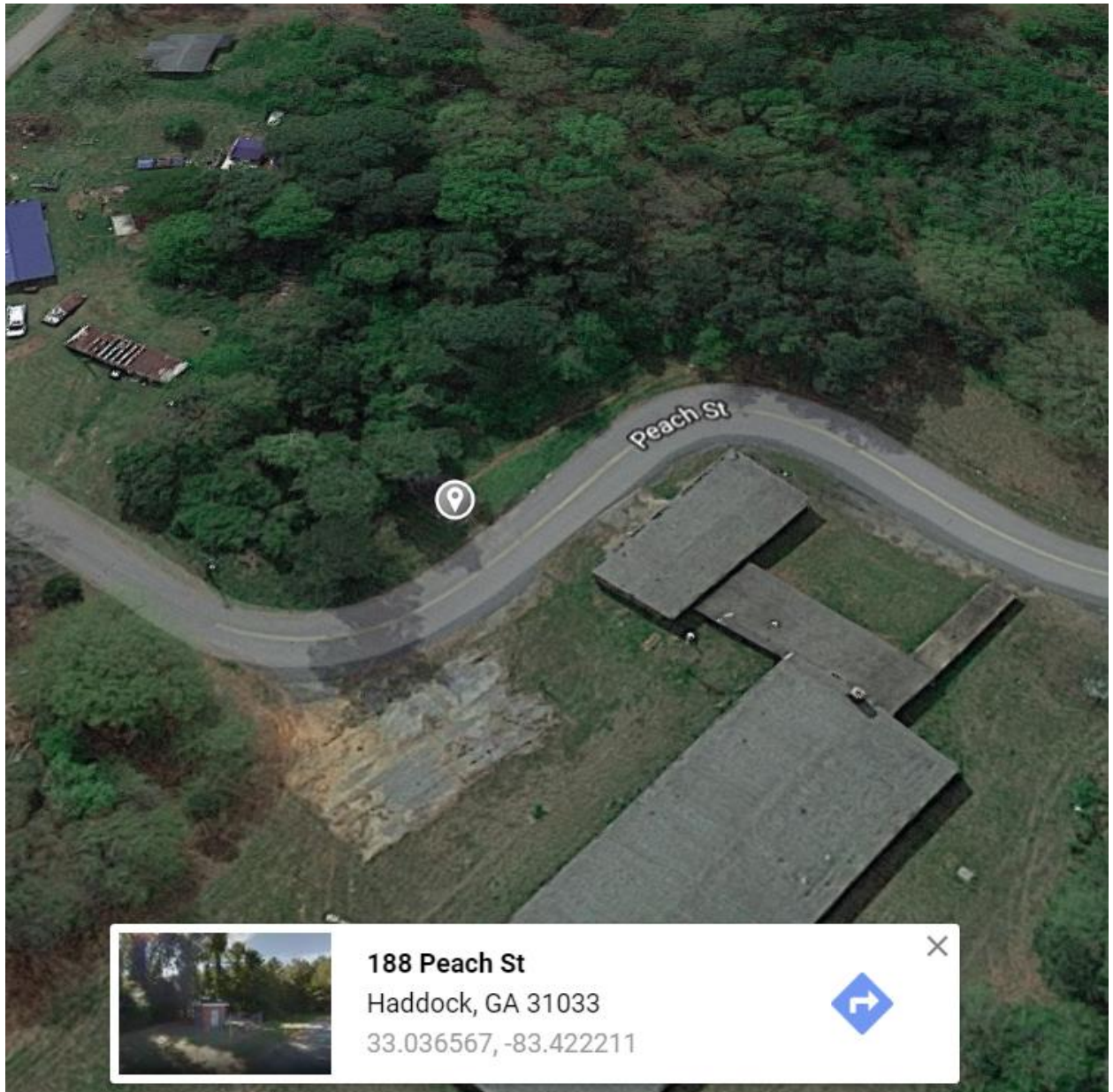


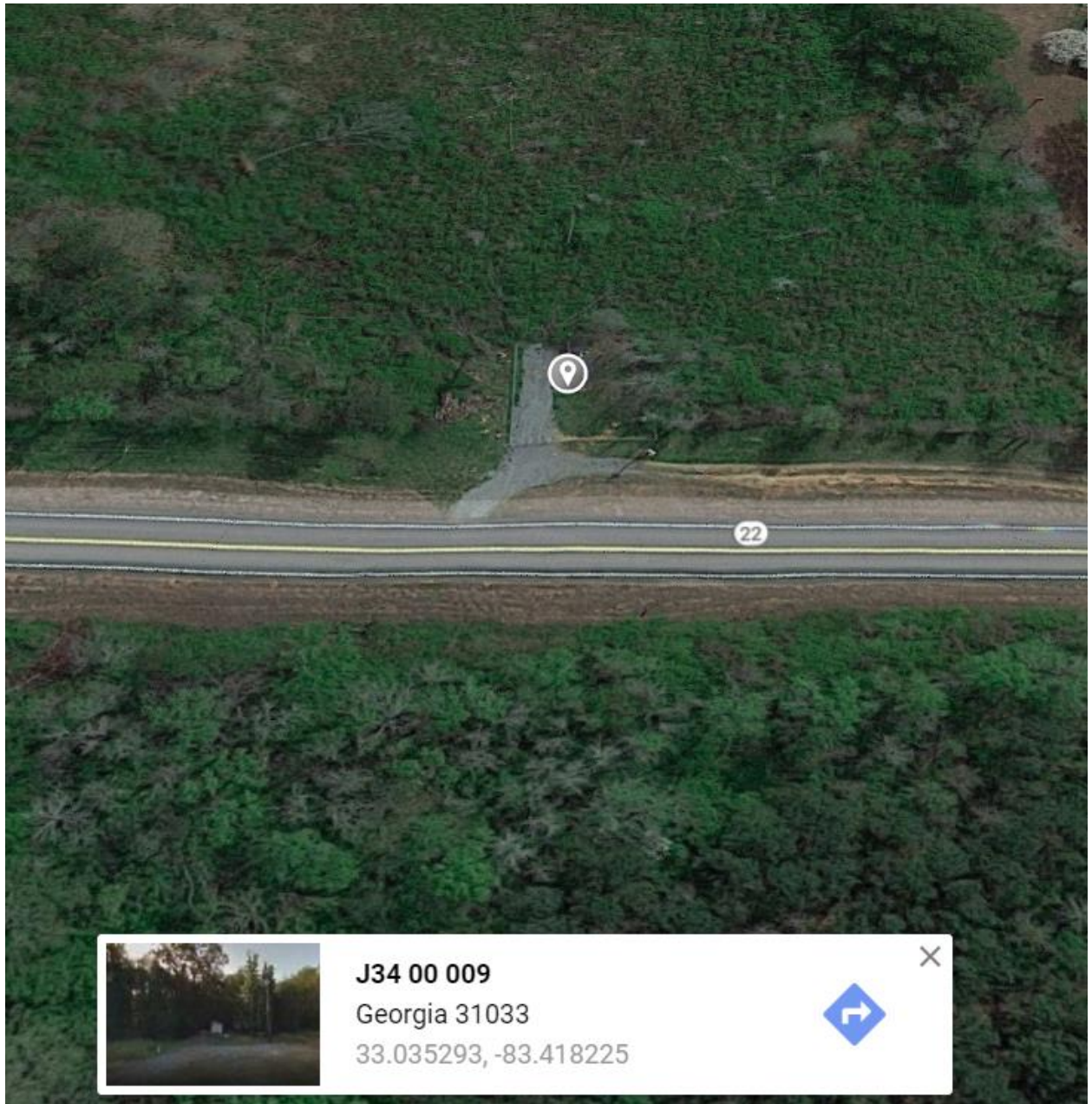
## Addendum #1- Backup Generators for Water Facilities

- The due date for the Jones County Backup Generators for Water Facilities Bid has been changed to Thursday July 26 at 10:00AM.
  - We have received some questions. Please see the answers to those below:
1. I do not have all the background details sounding sizing your generators so I may be speaking from an uninformed position. My question is, has this size of unit been properly sized based on load and equipment tolerances? I ask as depending on your load, most times these air cooled, high speed (3600rpm) units with brush exciters you are referencing cannot not handle a water and sewer environment. More directly industrial grade pump loads create issues for them. I would like to confirm that what I quote you will do the job you are seeking. Can you confirm the following:
    - a. What is the load at each site (submersible pumps in a wet well and control power)? **The load at each site is the load of the pump itself, and 3 small chemical pumps.**
    - b. If we are powering pumps, how many at each site? If more than one, do they stagger start (lead – lag) or both start at the same time? **We are powering only one pump at each site.**
    - c. What are the pump specifications, such as HP, and LRA? **The Bradley well has a 10hp pump, Etheridge road well has a 5hp pump, and Idella Duncan well has a 3hp pump.**
    - d. What is the maximum allowable voltage dip? **The maximum allowable voltage dip is 10%.**
  2. Does this bid include installation or just delivery? **Both installation and delivery**
  3. Is the generator required to power the whole site? **Yes**
  4. Is the transfer switch going to be located inside or outside and thus require a NEMA 3R enclosure? **The transfer switch will be on the outside, it needs NEMA 3R enclosure.**
  5. On the diesel units, what size of fuel tank do you require? **They are usually rated by hours of run time in the intervals of 24 hours, 48 hours, 72 hours, or larger. We will need a diesel tank to handle a 24hr period.**
  6. Can you confirm address, or gps coordinates for each site.



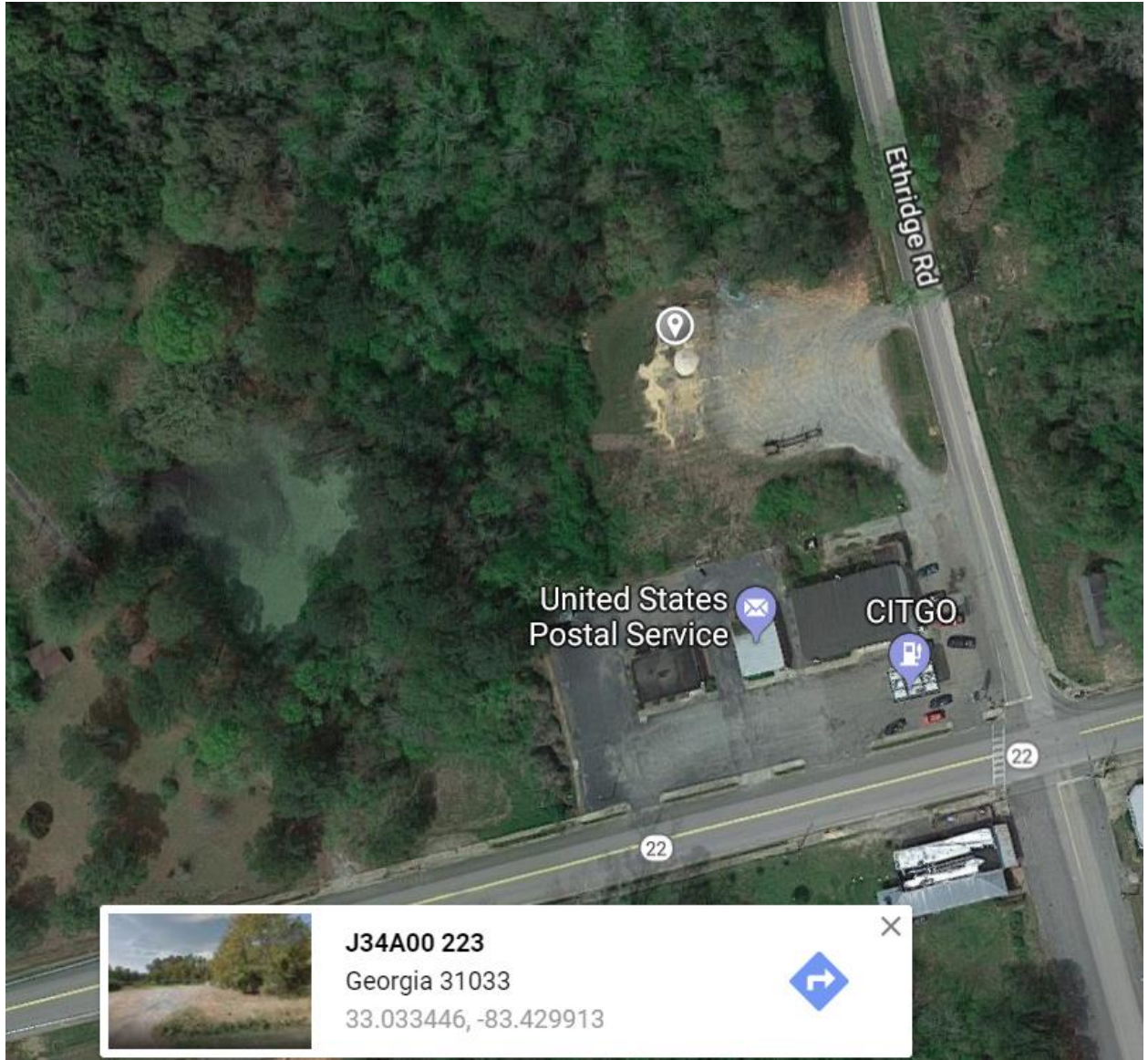
**188 Peach St**  
Haddock, GA 31033  
33.036567, -83.422211





**J34 00 009**  
Georgia 31033  
33.035293, -83.418225





**J34A00 223**  
Georgia 31033  
33.033446, -83.429913

