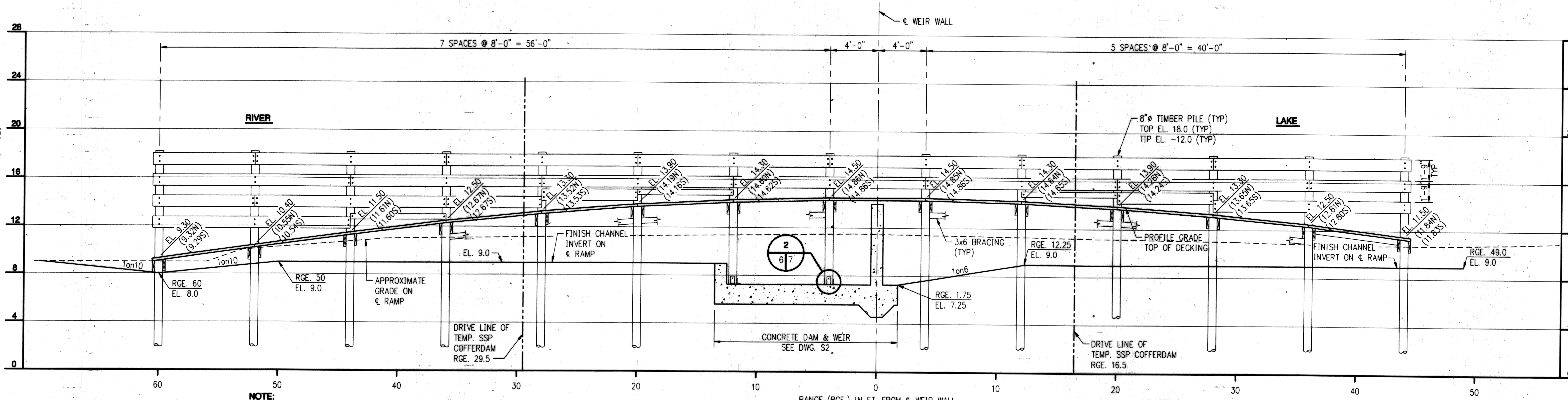
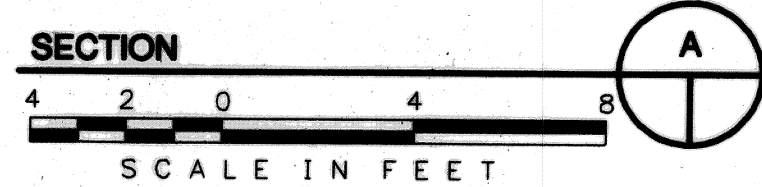


**NOTE:**  
AIRBOAT DESIGN LOAD = 6700 POUNDS.



**NOTE:**  
AS CONSTRUCTED ELEVATIONS TAKEN FROM DISTRICT SURVEY DATED 21 JULY 1999.  
"N" DESIGNATES FINISHED PLANKING ELEVATION ON THE NORTH SIDE OF THE RAMP.  
"S" DESIGNATES SOUTH SIDE.



**Burns & McDonnell**  
Kansas City, Missouri  
Jacksonville, Florida

*John M. ...*  
9/10/01

2 CONFORMING TO CONSTRUCTION RECORDS		SAB 8/31/01	GM 8/31/01
NO.	REVISION	BY	DATE APPROVED DATE

LAKE WASHINGTON WATER CONTROL  
STRUCTURE AND NAVIGATIONAL FACILITIES  
BREVARD COUNTY, FLORIDA

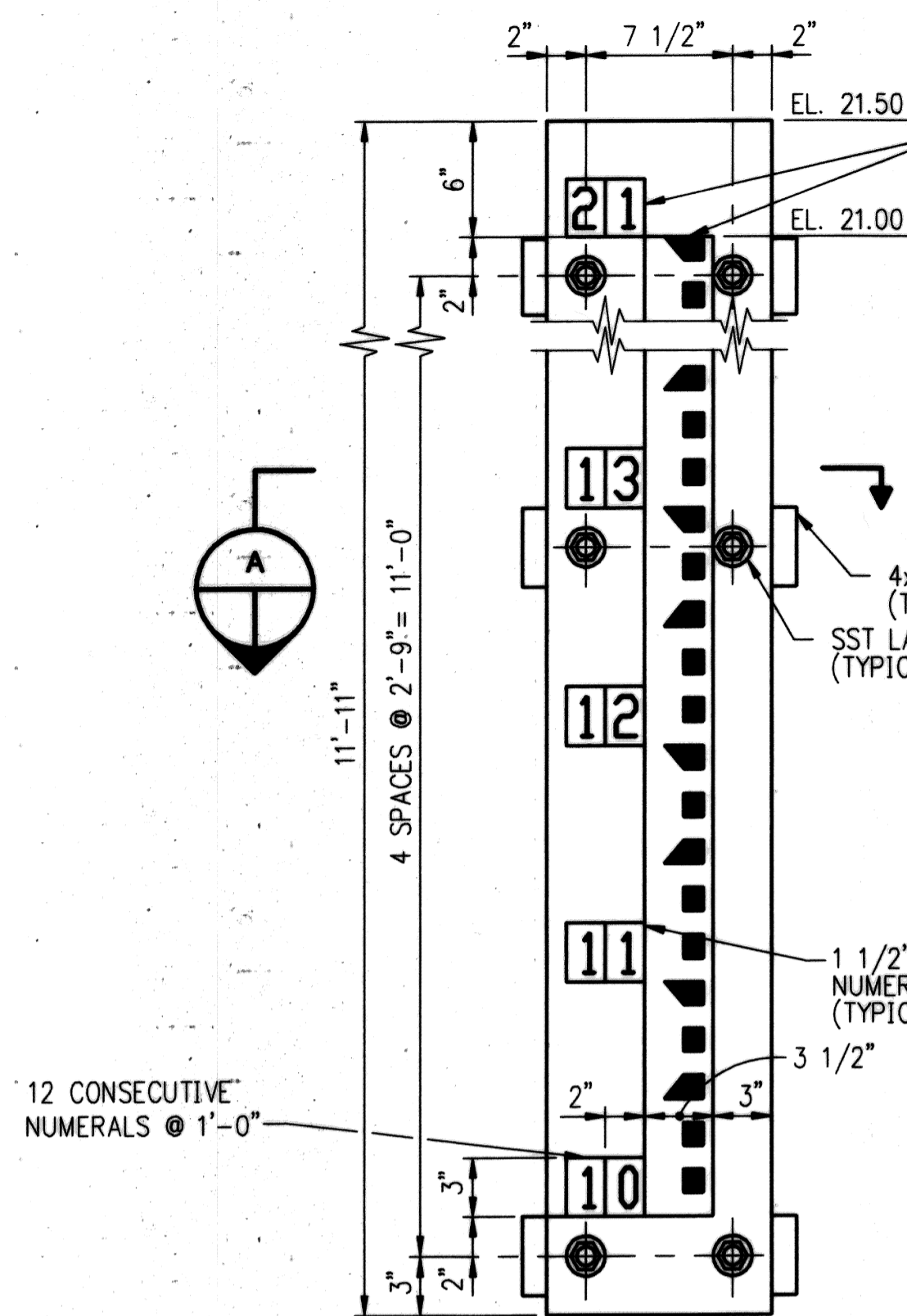
ST JOHNS RIVER  
WATER MANAGEMENT DISTRICT  
P.O. BOX 1429 PALATKA, FLORIDA

DRAWN BY: J. FORSTER    DATE: MAY 1998    REVIEWED BY: J. MILLER    FIELD PROJ. MGR. \_\_\_\_\_  
SCALE: AS SHOWN    DESIGN ENG.: D. BERRY    DESIGN REG. CHIEF \_\_\_\_\_    APPROVED BY: DIV. DIR. \_\_\_\_\_

AIRBOAT RAMP  
PLAN AND PROFILE

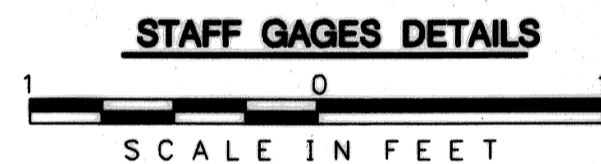
DRAWING FILENAME: S.JRS06.DWG  
PROJECT NUMBER: 98-003-1  
S.JRWMD  
SHEET NUMBER: 56  
14 OF 18

NOT RELEASED FOR CONSTRUCTION BY \_\_\_\_\_ ON \_\_\_\_\_

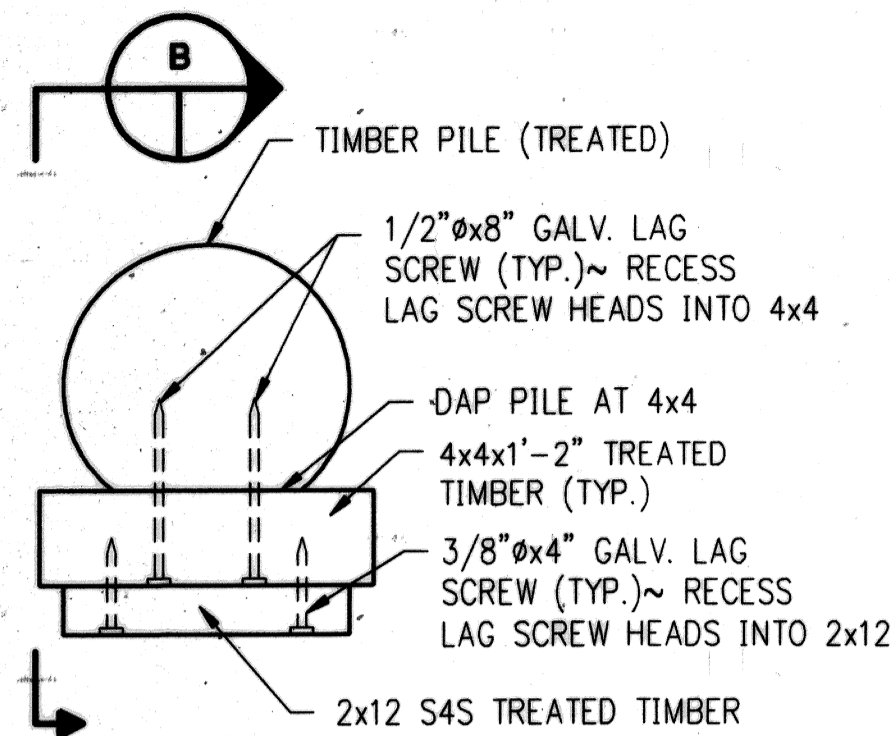


GAGE STRIPS AND FIGURE PLATES TO BE OF PORCELAIN ENAMELED IRON WITH BLACK FIGURES ON WHITE BACKGROUND. LEOPOLD & STEVENS OR APPROVED EQUAL OF DIMENSIONS INDICATED. ATTACH STRIPS AND PLATES TO 2x12 WITH NON-CORROSIVE WOOD SCREWS. OUTSIDE LAG SCREWS TO BE RECESSED INTO 2x12 (TYPICAL).

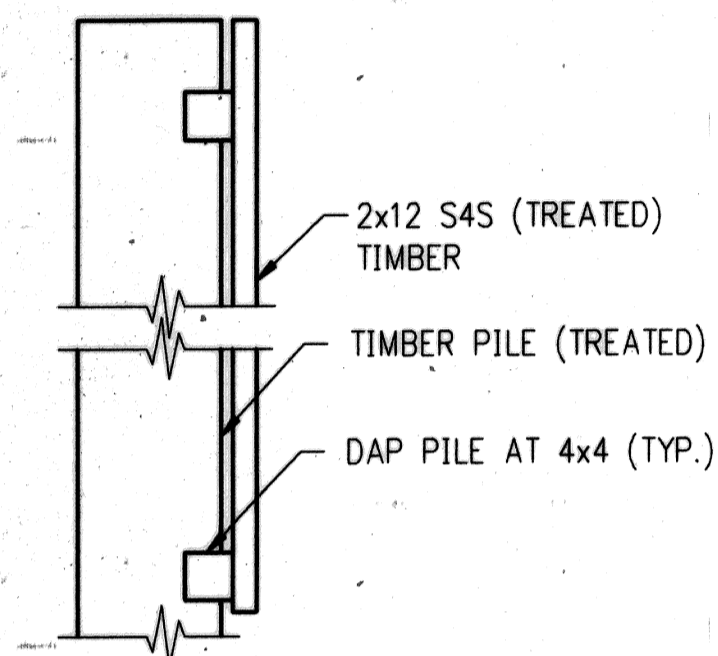
12 CONSECUTIVE NUMERALS @ 1'-0"



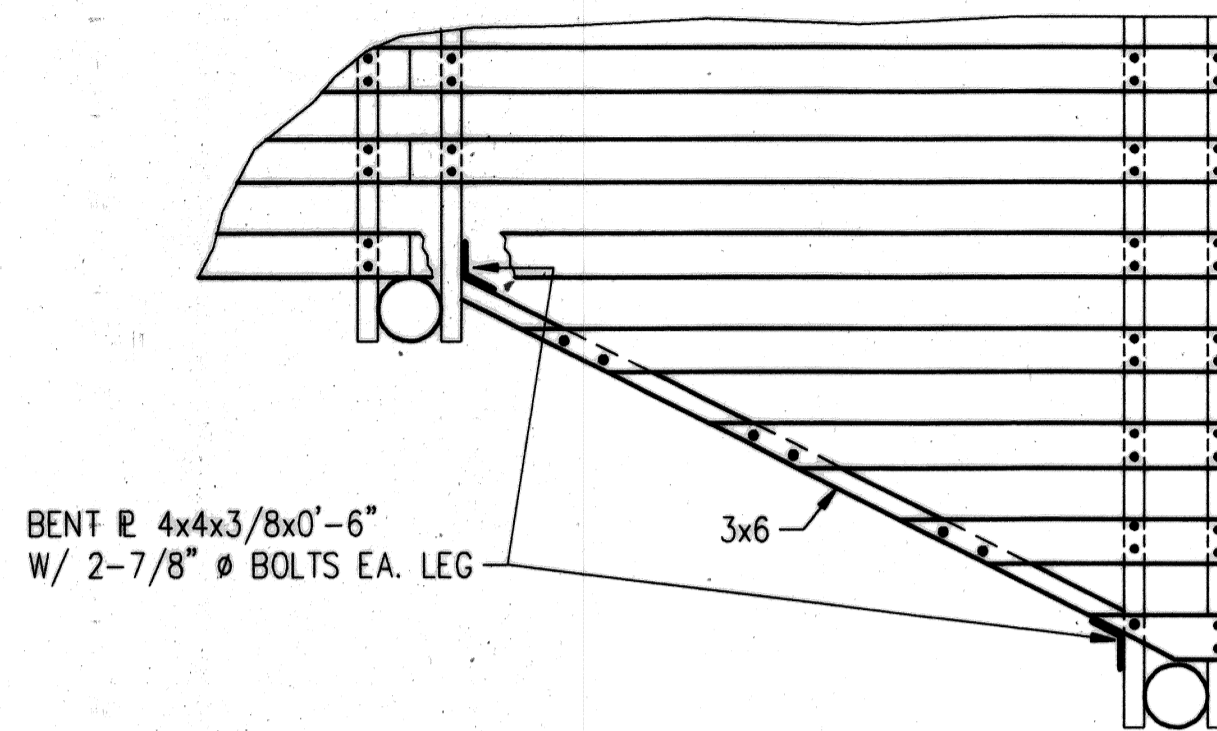
**NOTE:**  
FOR LOCATION AND ORIENTATION OF STAFF GAGES AND PILE SUPPORTS, SEE DWG. S4. 2 REQ'D. THUS.



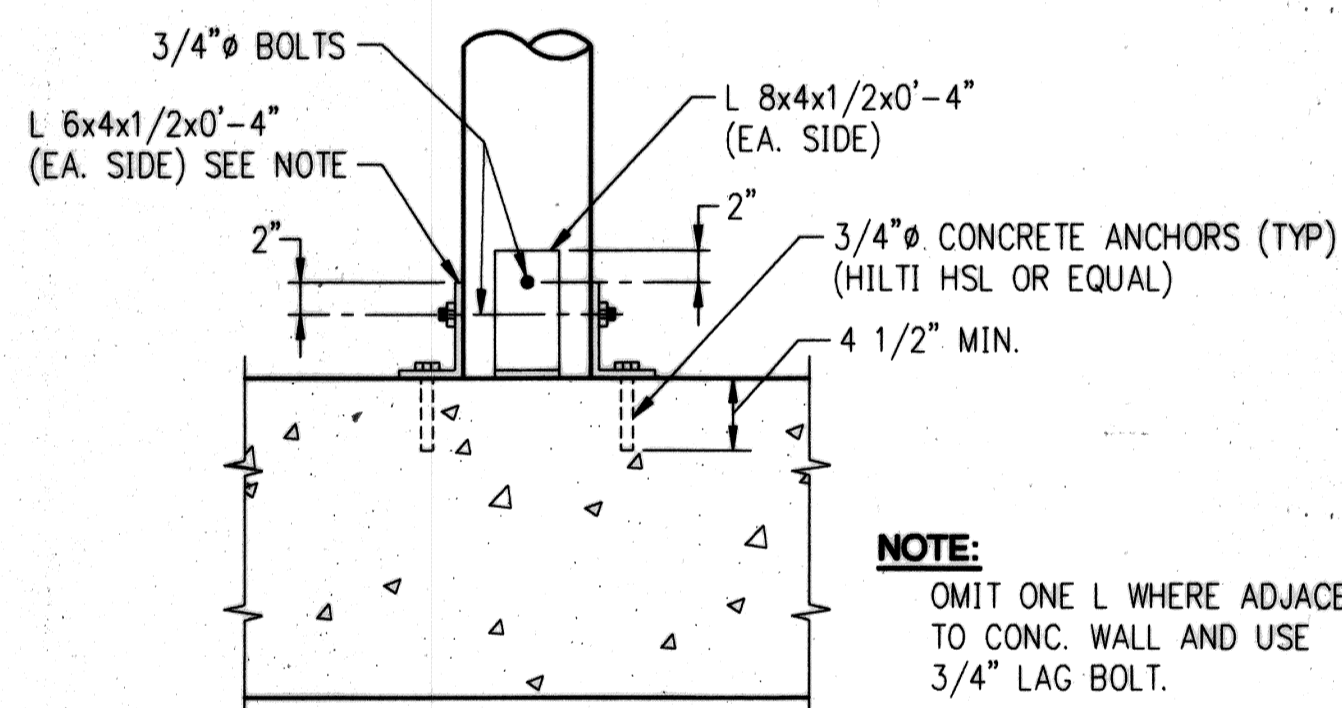
SECTION A  
NOT TO SCALE



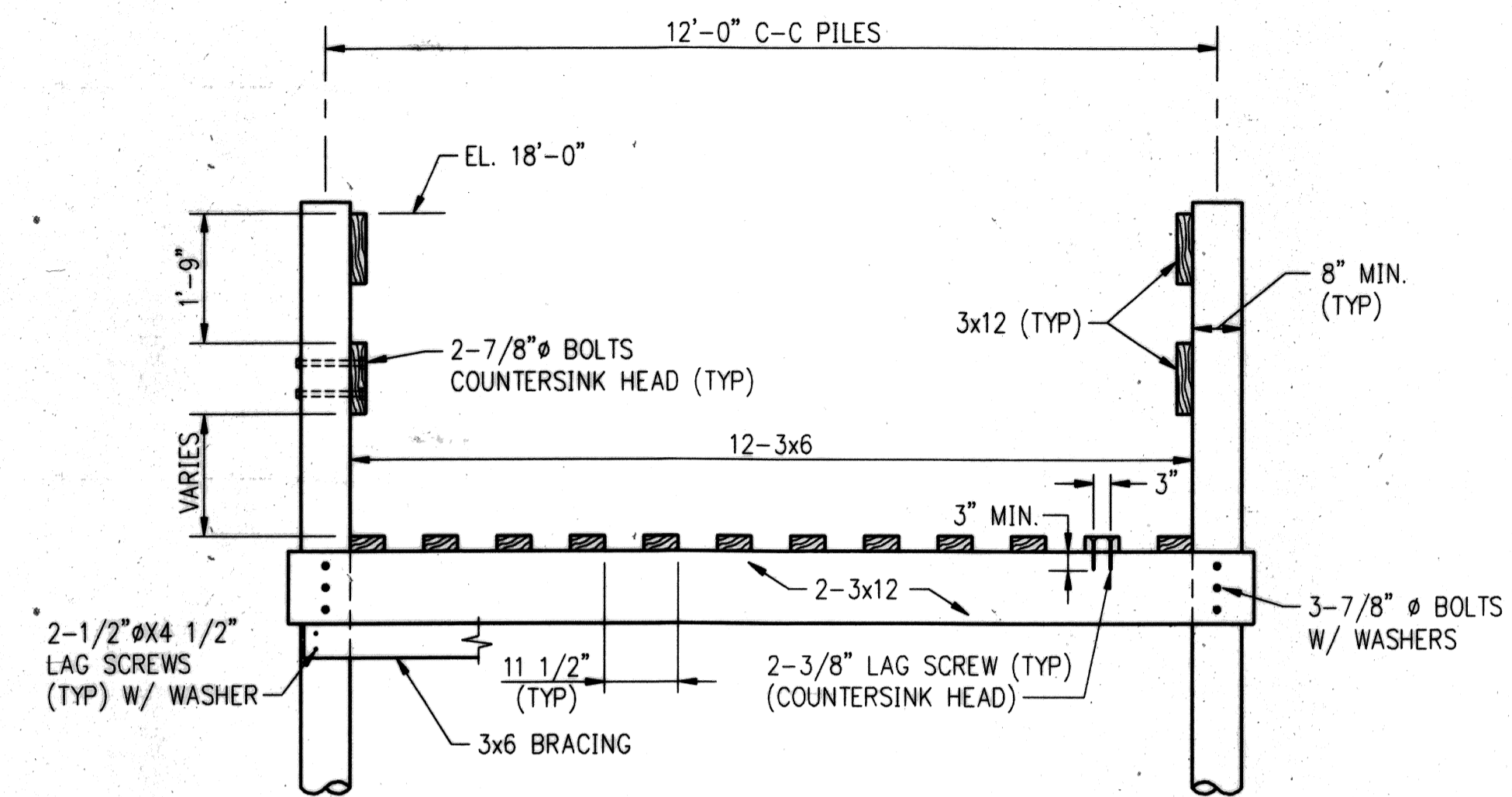
SECTION B  
NOT TO SCALE



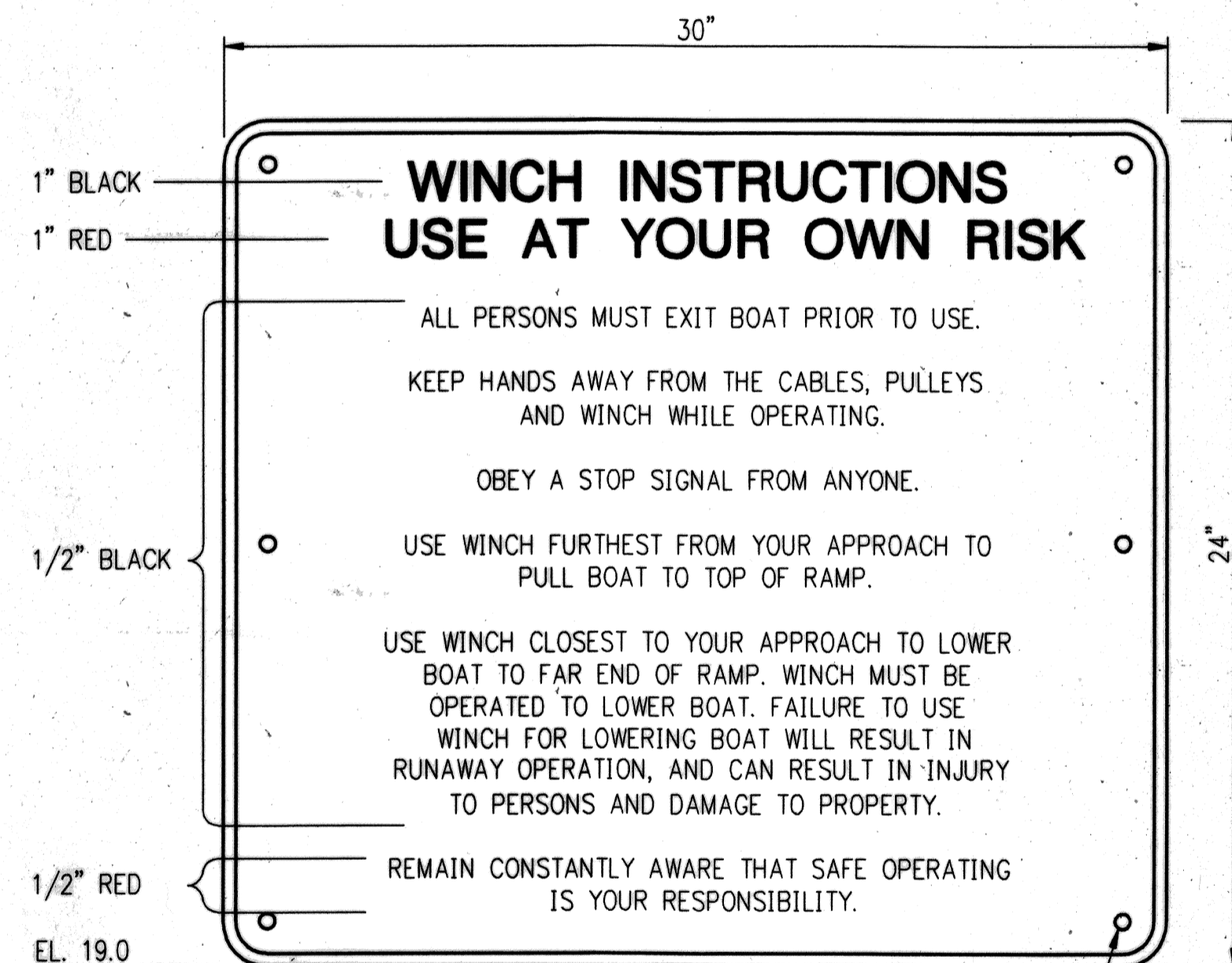
DETAIL 1  
SCALE IN FEET



DETAIL 2  
NOT TO SCALE



SECTION B  
SCALE IN FEET



ALUMINUM SIGN BLANK, 0.080 GAGE, WHITE BACKGROUND

SST WOOD SCREW (TYP 6 PLACES)

2	CONFORMING TO CONSTRUCTION RECORDS	SAB	8/31/01	GM	8/31/01
NO.	REVISION	BY	DATE	APPROVED	DATE

LAKE WASHINGTON WATER CONTROL  
STRUCTURE AND NAVIGATIONAL FACILITIES  
BREVARD COUNTY, FLORIDA

ST JOHNS RIVER  
WATER MANAGEMENT DISTRICT  
P.O. BOX 1429 PALATKA, FLORIDA

DESIGN BY: G. SWITZER DATE: MAY 1998 REVIEWED BY: G. MILLER FIELD PROJ. MGR.  
SCALE: AS SHOWN DESIGN ENG.: D. ALLISON DESIGN REC. CHIEF APPROVED BY: GYL. ORR

AIRBOAT RAMP AND MISCELLANEOUS  
SECTIONS AND DETAILS

Burns & McDonnell  
Kansas City, Missouri  
Jacksonville, Florida

9/18/01

DRAWING FILENAME: SRS07.DWG  
PROJECT NUMBER: 98-003-1  
SJR/MD  
SHEET NUMBER: S7  
15 OF 18

NOT RELEASED FOR CONSTRUCTION BY