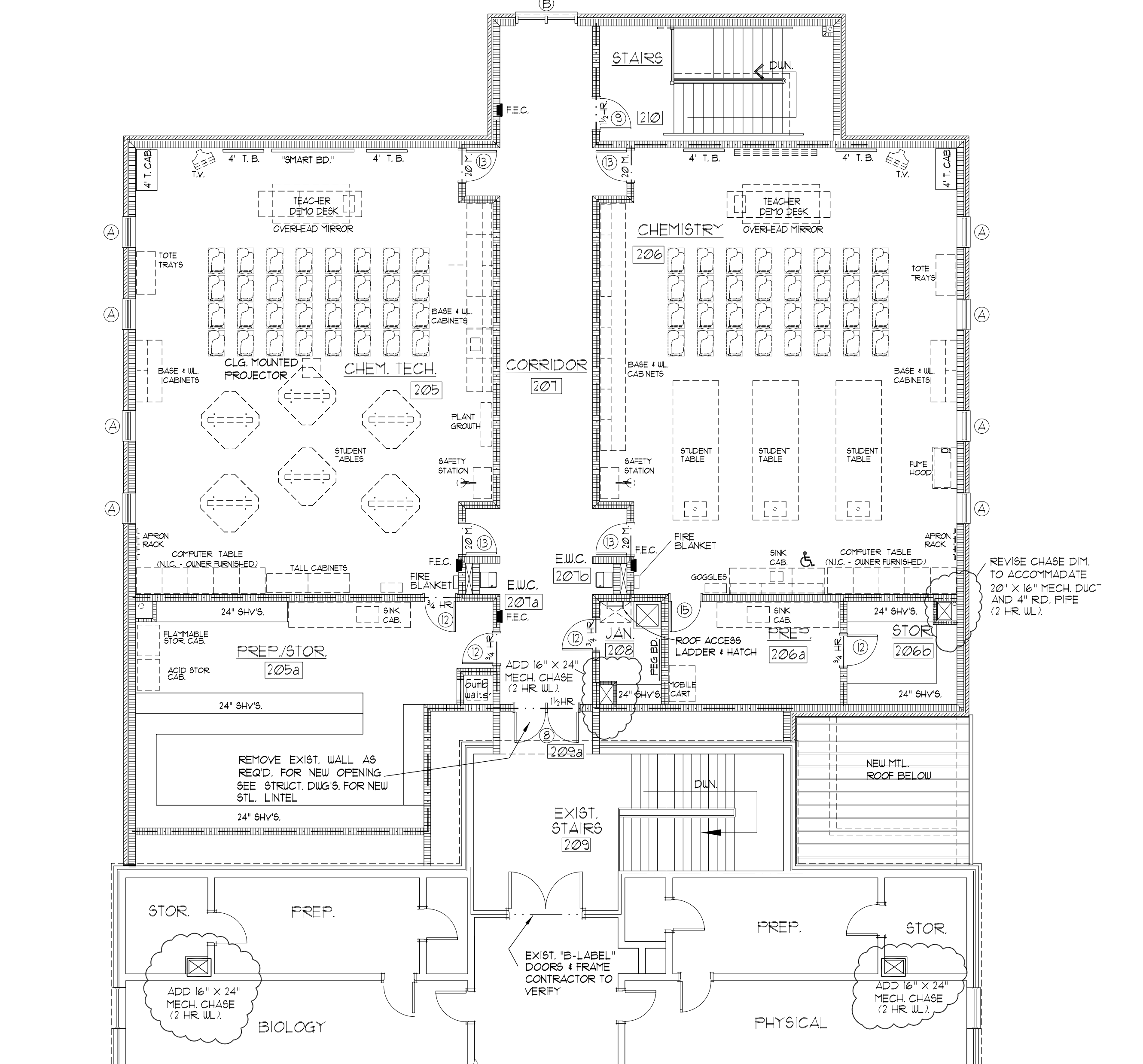
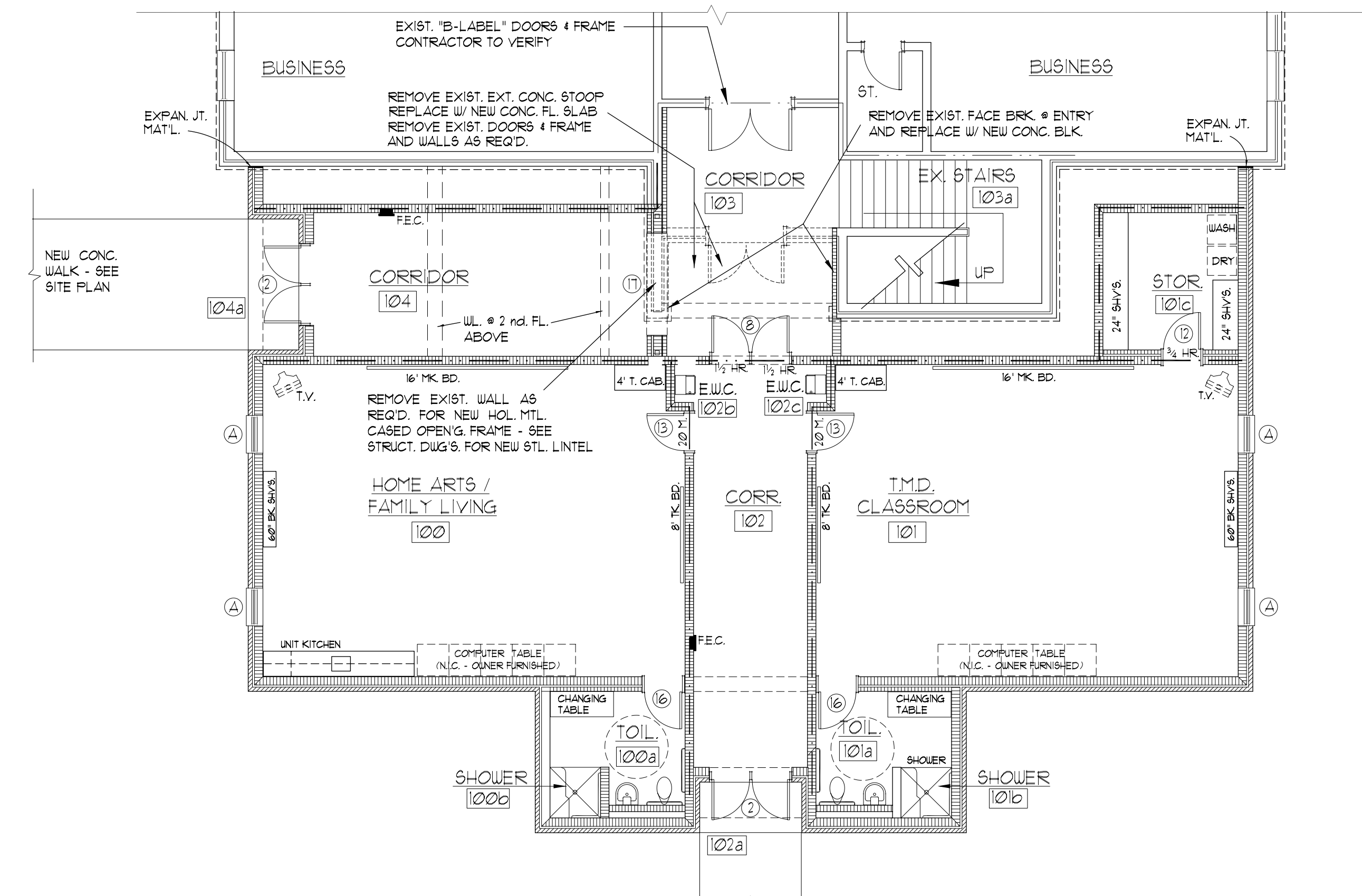


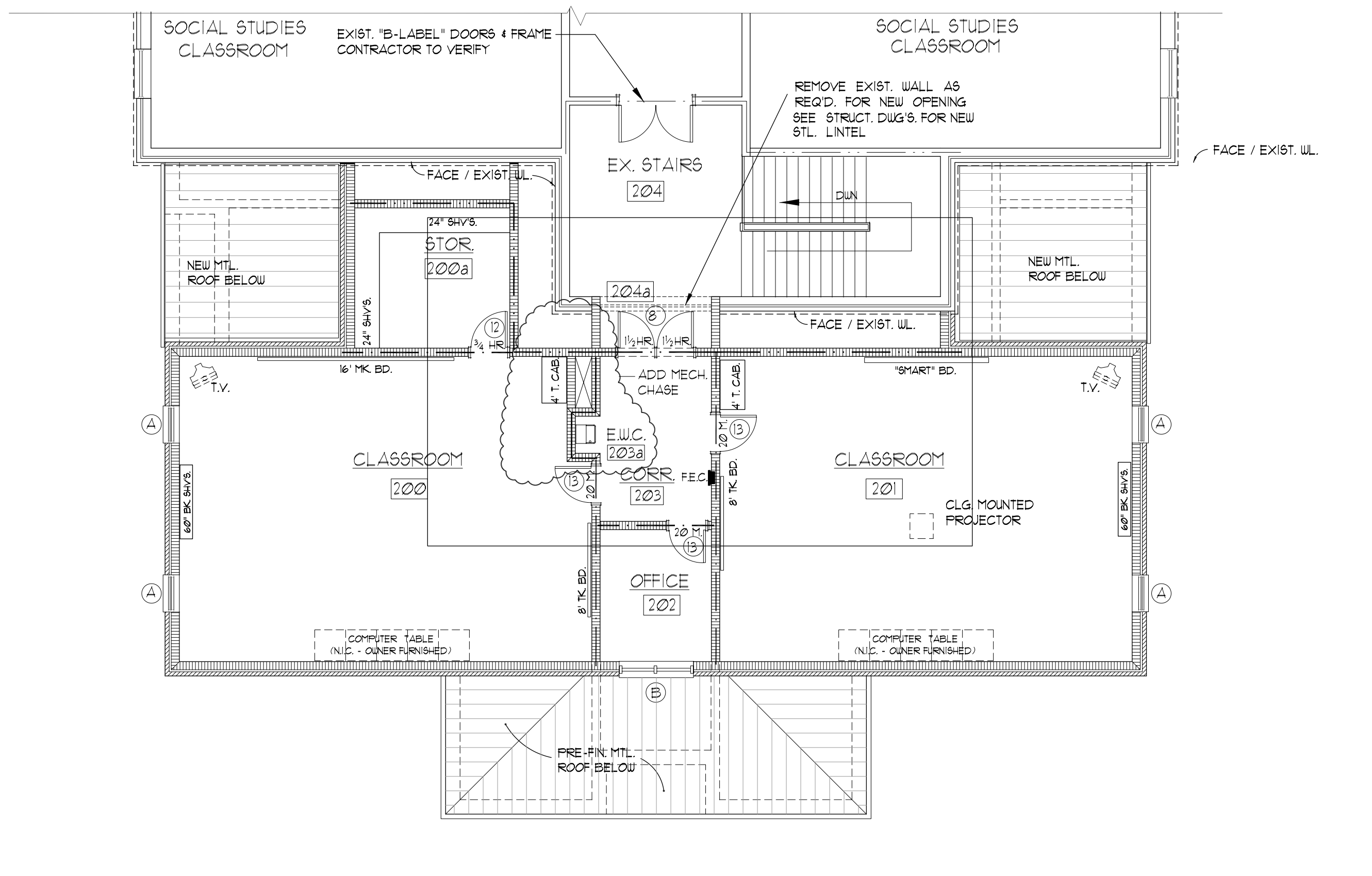
**FIRST FLOOR PLAN - AREA "3"**  
 SCIENCE ROOM ADDITION - NORTHWEST WING  
 SCALE: 1/8" = 1'-0"



**SECOND FLOOR PLAN - AREA "3"**  
 SCIENCE ROOM ADDITION - NORTHWEST WING  
 SCALE: 1/8" = 1'-0"



**FIRST FLOOR PLAN - AREA "2"**  
 CLASSROOM ADDITION - SOUTHEAST WING  
 SCALE: 1/8" = 1'-0"



**SECOND FLOOR PLAN - AREA "2"**  
 CLASSROOM ADDITION - SOUTHEAST WING  
 SCALE: 1/8" = 1'-0"

REVISIONS

ALTERATIONS AND ADDITIONS TO  
**MYRTLE BEACH HIGH SCHOOL**  
 MYRTLE BEACH, SOUTH CAROLINA  
**HORRY COUNTY SCHOOLS**  
 CONWAY, SOUTH CAROLINA



**F W ARCHITECTS, INC. A.I.A.**  
 ARCHITECTURE  
 PLANNING  
 INTERIORS

1550 WEST EVANS STREET  
 P.O. BOX 2261  
 FLORENCE, SC 29503

Phone: (843) 662-9961  
 FAX: (843) 665-5065  
 email: fwa@fw-architects.com

MEMBER OF THE AMERICAN INSTITUTE OF ARCHITECTS

DATE  
 MARCH 28, 2003  
 COMMISSION NO.  
 0216  
 DRAWING NO.

**5**  
 OF 21  
 SHEET DESCRIPTION

FLOOR PLANS  
 (NEW CLASSROOMS)

DWN:      CHK:

All rights reserved. This drawing and the design shown thereon are copyrighted and reproduced by the laws of the United States and are the property of FWA ARCHITECTS, INC., A.I.A. Anyone duplicating, reproducing or causing to be reproduced the whole or part of this drawing or design thereon without written permission of the architect will be subject to legal action. These plans shall not be used for construction purposes without the written approval of the architect.







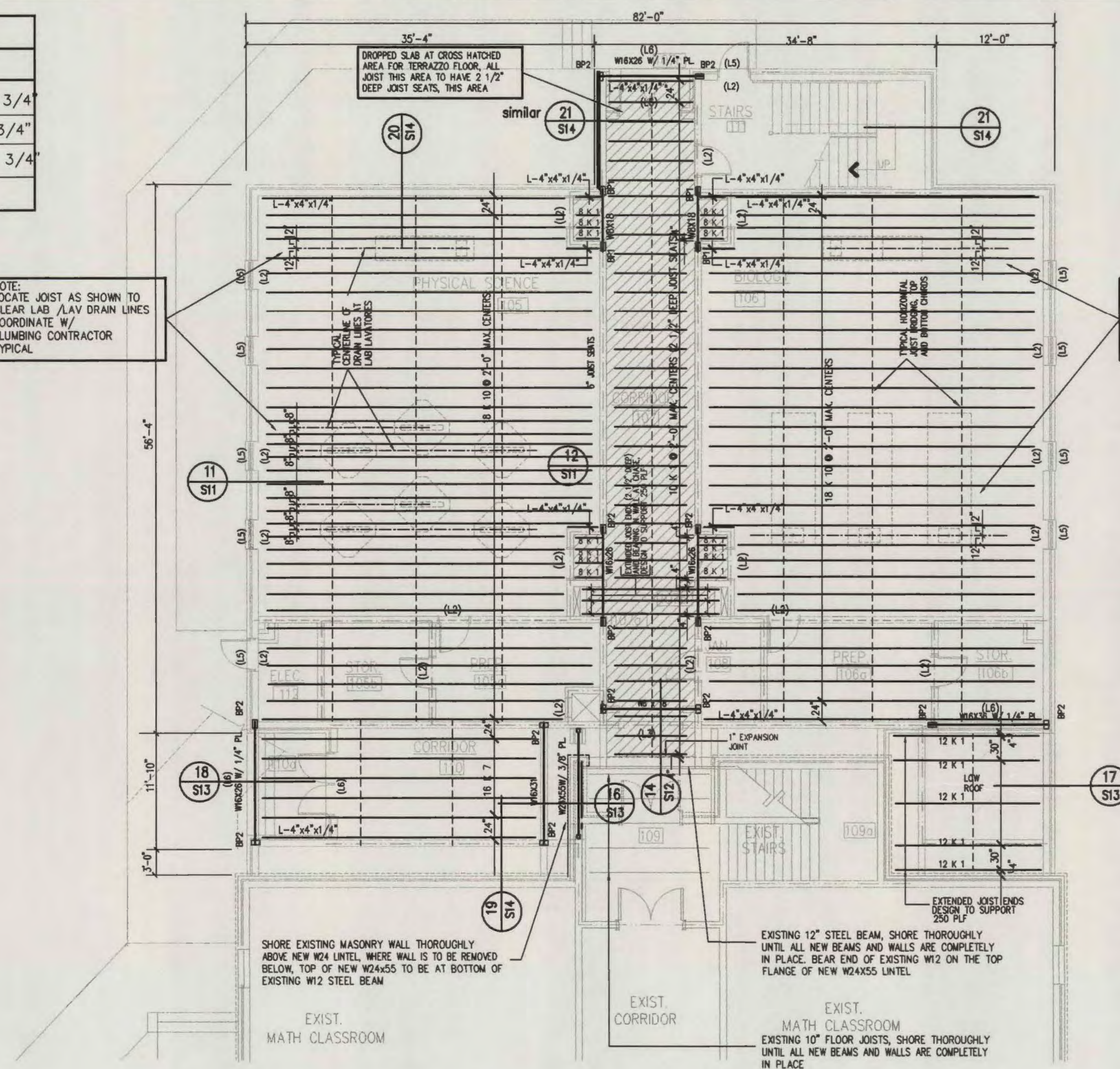
All rights reserved. This drawing and the design shown thereon are copyrighted as prescribed by the laws of the United States and are the property of FW ARCHITECTS, INC., A.I.A. Anyone duplicating, reproducing or copying in whole or in part of this drawing or design, without written permission of the Architect, will be subject to legal action. These plans and not be used for construction purposes without the written approval of the Architect.

BEARING PLATE SCHEDULE		
MARK	SIZE	ANCHORS
BP1	7" X 3/8" X 7"	2 - 3/4"
BP2	7" X 3/8" X 9"	2 - 3/4"
BP3	7" X 1/2" X 1 1/2"	2 - 3/4"

NOTE: FILL ALL BLOCK CELLS SOLID W/ CONCRETE FROM BASE OF WALL TO BEARING PLATE, SEE DETAIL SHEET S2

NOTE: LOCATE JOIST AS SHOWN TO CLEAR LAB /LAV DRAIN LINES, COORDINATE W/ PLUMBING CONTRACTOR TYPICAL

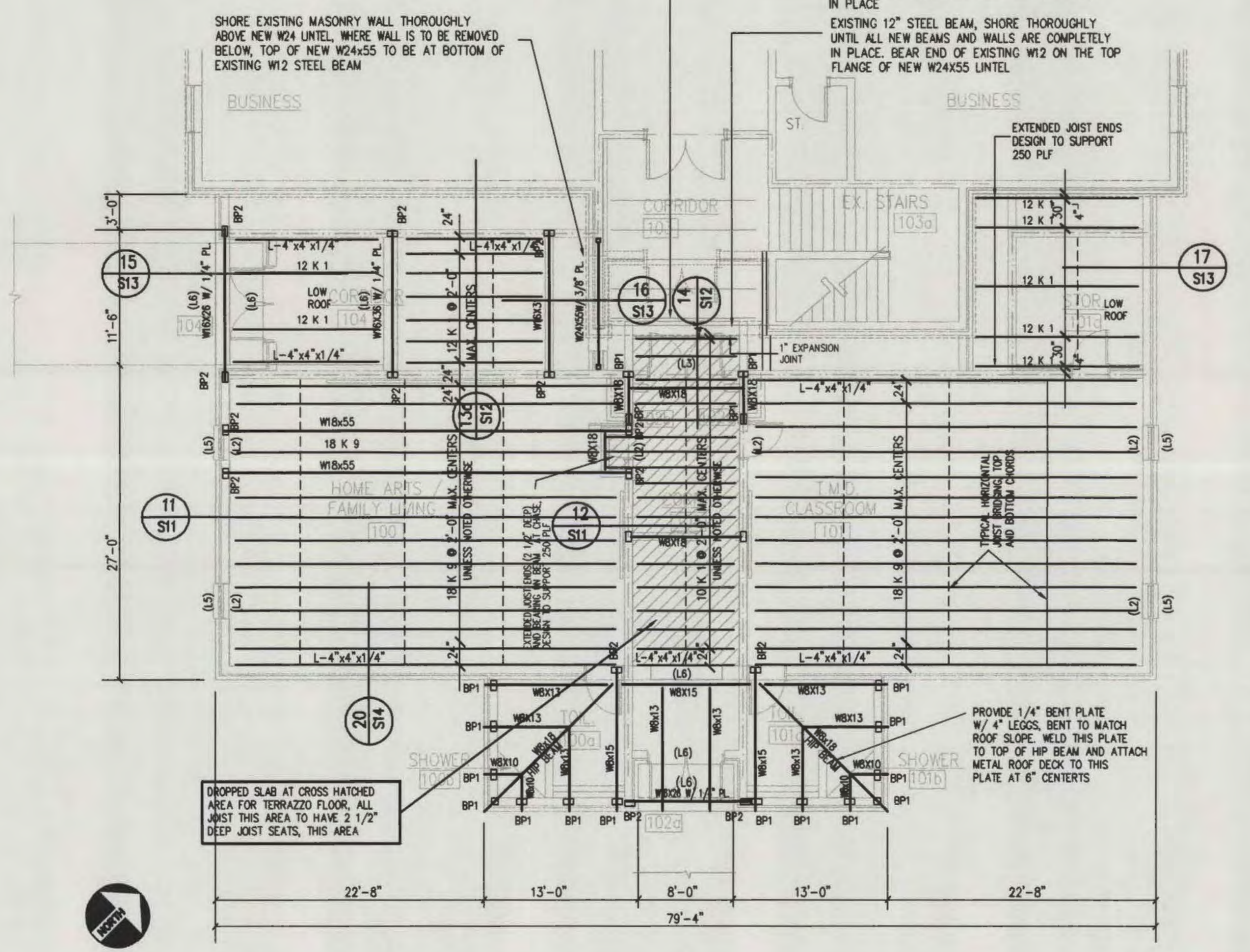
NOTE: LOCATE JOIST AS SHOWN TO CLEAR LAB /LAV DRAIN LINES, COORDINATE W/ PLUMBING CONTRACTOR TYPICAL



## SECOND FLOOR FRAMING PLAN

### SCIENCE ROOM ADDITION - NORTHWEST WING

SCALE: 1/8" = 1'-0"

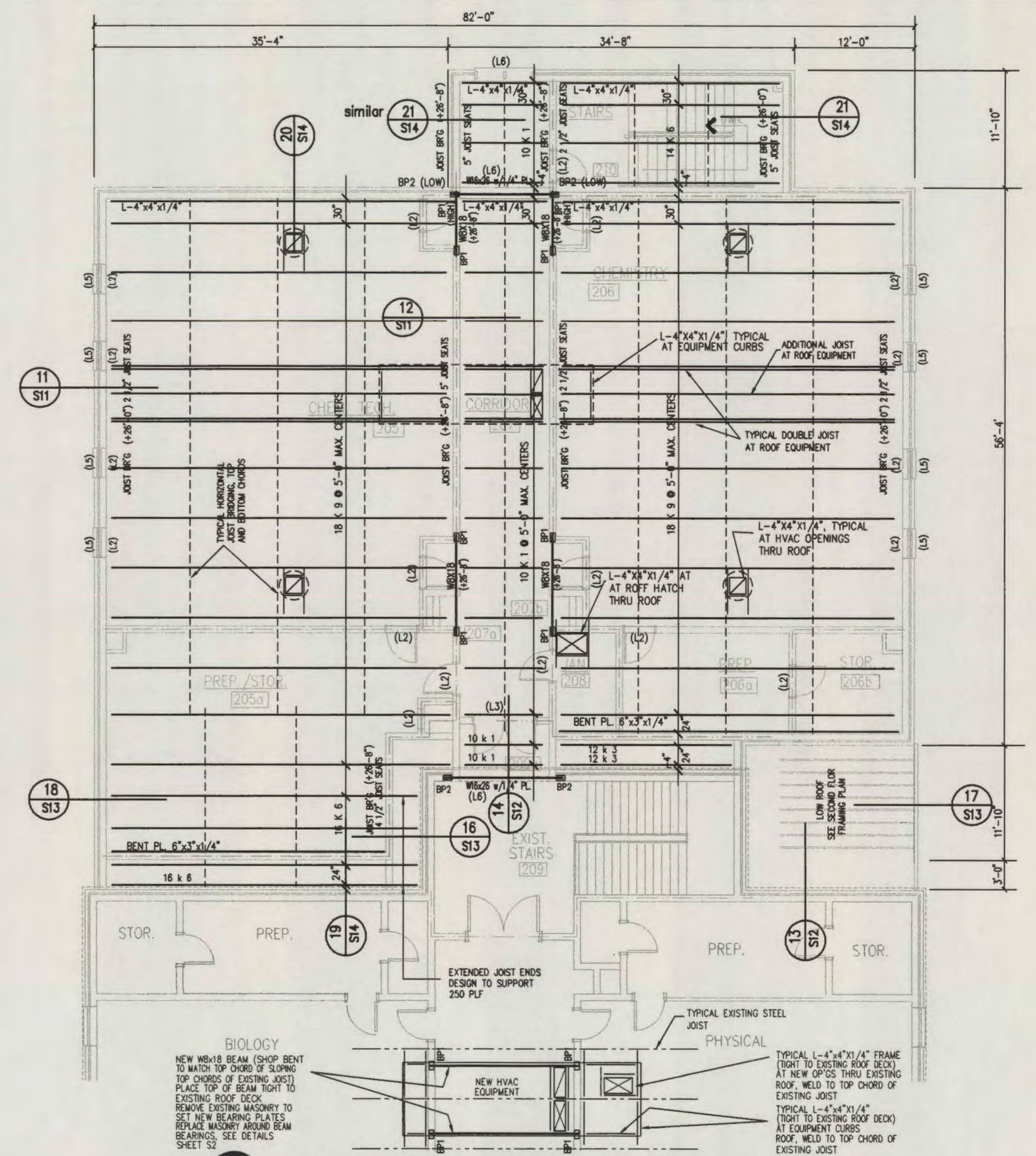


## SECOND FLOOR FRAMING PLAN

### CLASSROOM ADDITION - SOUTHEAST WING

SCALE: 1/8" = 1'-0"

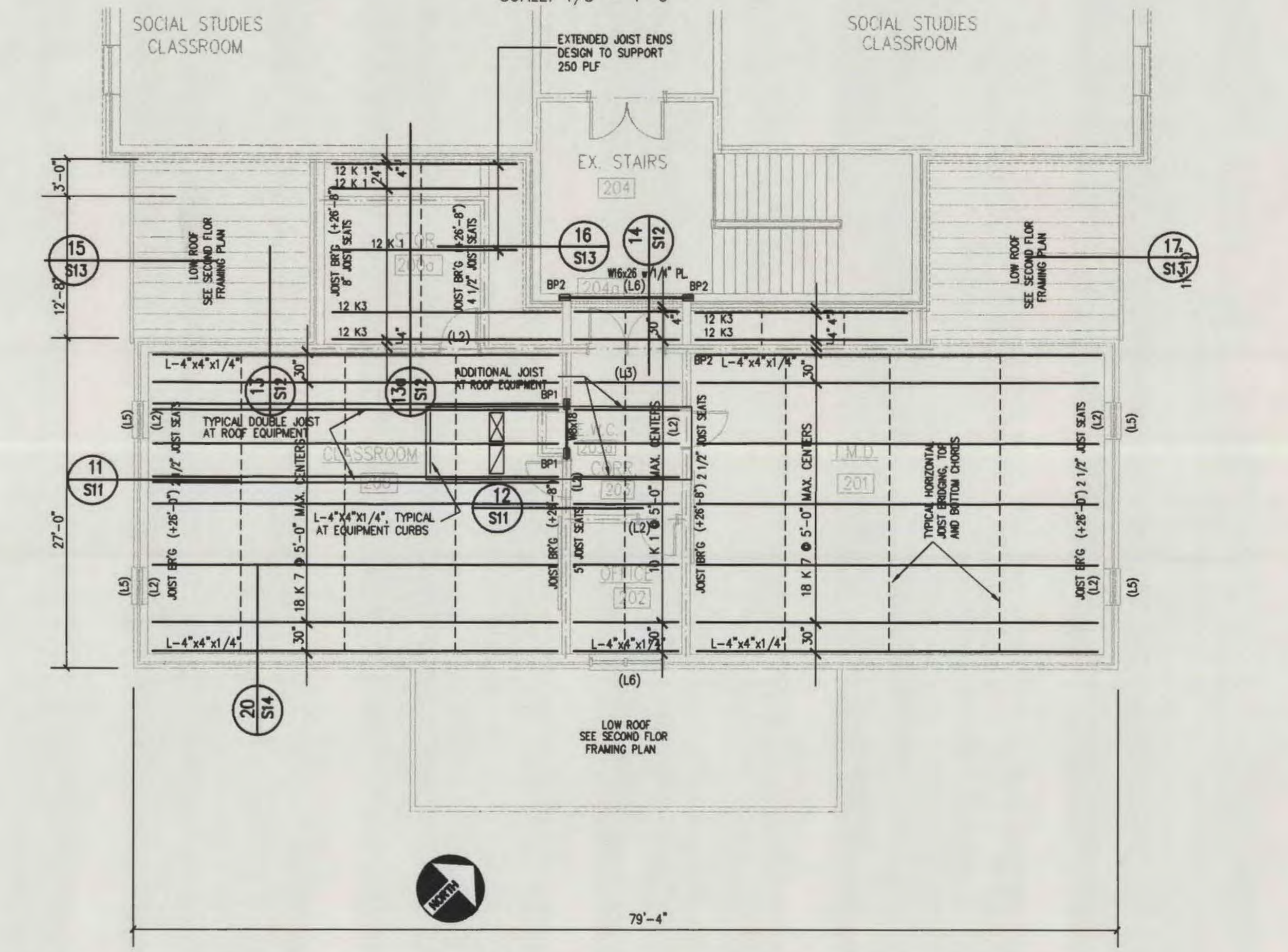
- NOTES:
- BRACE TOP OF ALL INTERIOR BLOCK WALLS AS SHOWN ON SHEET S2.
  - WELD IN DEFORMED ANCHORS AT 18" MAXIMUM CENTERS (24" LONG) TO TOP FLANGE OF STEEL LINTEL BEAMS AND CONTINUE WITH TYPICAL WALL REINFORCING TO TOP OF WALL.
  - ALL EQUIPMENT HUNG FROM ROOF JOIST TO BE AS SHOWN ON TYPICAL DETAIL, SHEET S2.
  - SPACE ALL JOIST AS SHOWN, AND SO THAT JOIST CLEAR ANY WALLS THAT ARE TO BE BUILT TO UNDERSIDE OF ROOF DECK.
  - SOME CMU LINTELS ARE FORMED FROM CONTINUOUS BOND BEAMS (SEE WALL SECTIONS AND NOTES) IN CMU WALLS, LINTELS MARKED THIS PLAN MAY NOT BE REQUIRED. COORDINATE W/ SECTIONS, NOTES, AND ARCH. DRAWINGS.
  - PLAN AND DIMENSIONS SHOWN ARE GENERATED BY ELECTRONIC INFORMATION PROVIDED BY THE ARCHITECT, VERIFY PLAN AND DIMENSIONS WITH ARCHITECTURAL DRAWINGS.
  - TOP OF STEEL BEAMS AND JOIST BEARINGS ARE NOTED (+0'-0") ABOVE FINISH FLOORS.



## ROOF FRAMING PLAN

### SCIENCE ROOM ADDITION - NORTHWEST WING

SCALE: 1/8" = 1'-0"



## ROOF FRAMING PLAN

### CLASSROOM ADDITION - SOUTHEAST WING

SCALE: 1/8" = 1'-0"

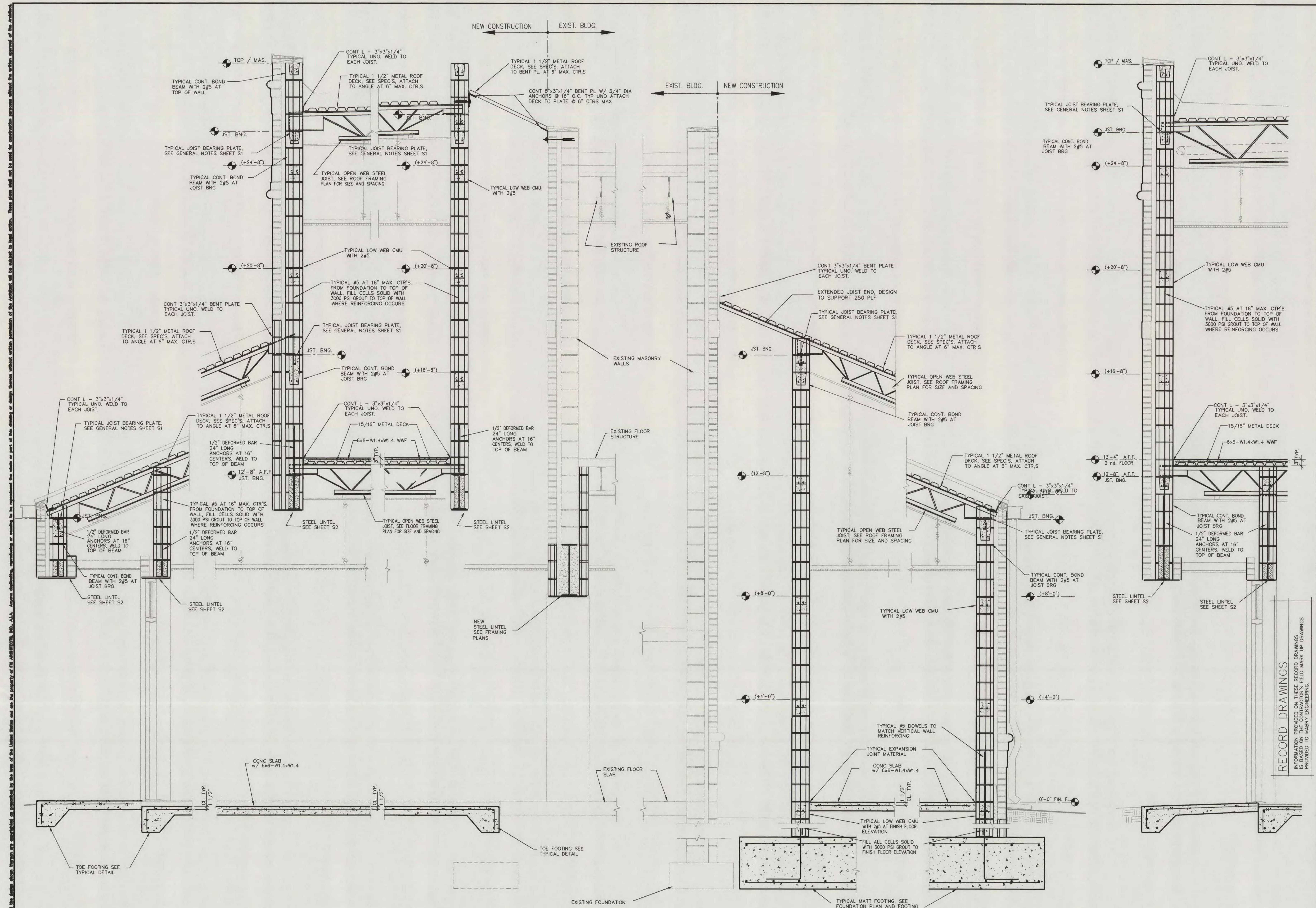
RECORD DRAWINGS  
INFORMATION PROVIDED ON THESE RECORD DRAWINGS IS BASED ON THE CONTRACTOR'S FIELD MARK UP DRAWINGS PROVIDED TO HARRY ENGINEERING

REVISIONS	

ALTERATIONS AND ADDITIONS TO  
**MYRTLE BEACH HIGH SCHOOL**  
MYRTLE BEACH, SOUTH CAROLINA  
Horry County Schools  
CONWAY, SOUTH CAROLINA

DATE	MARCH 2003
COMMISSION NO.	0216
DRAWING NO.	S6
OF	
SHEET DESCRIPTION	FRAMING PLANS (NEW CLASSROOMS)
DWN: REM	CHK: WHM





15 ENTRY ALCOVE AT NEW CORRIDOR  
S13 SCALE: [1" = 1'-0"]

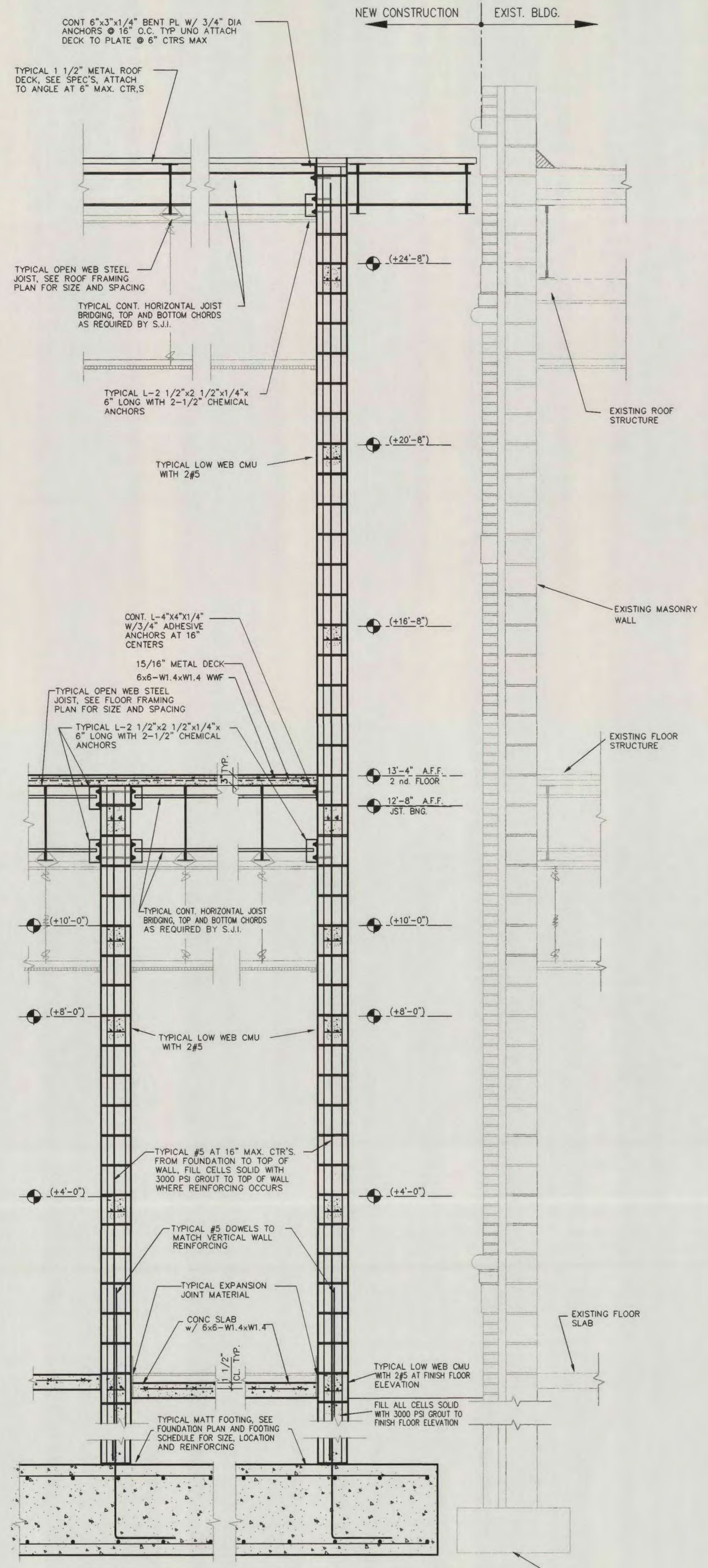
16 NEW CORRIDOR / 2nd. FLOOR STORAGE ROOM CONNECTION TO EXIST. BLDG.  
S13 SCALE: [1" = 1'-0"]

17 STORAGE ROOM / MTL. ROOF CONNECTION TO EXIST. BLDG.  
S13 SCALE: [1" = 1'-0"]

18 CORRIDOR RECESSED ENTRY AT 2-STORY CLASSROOMS  
S13 SCALE: [1" = 1'-0"]

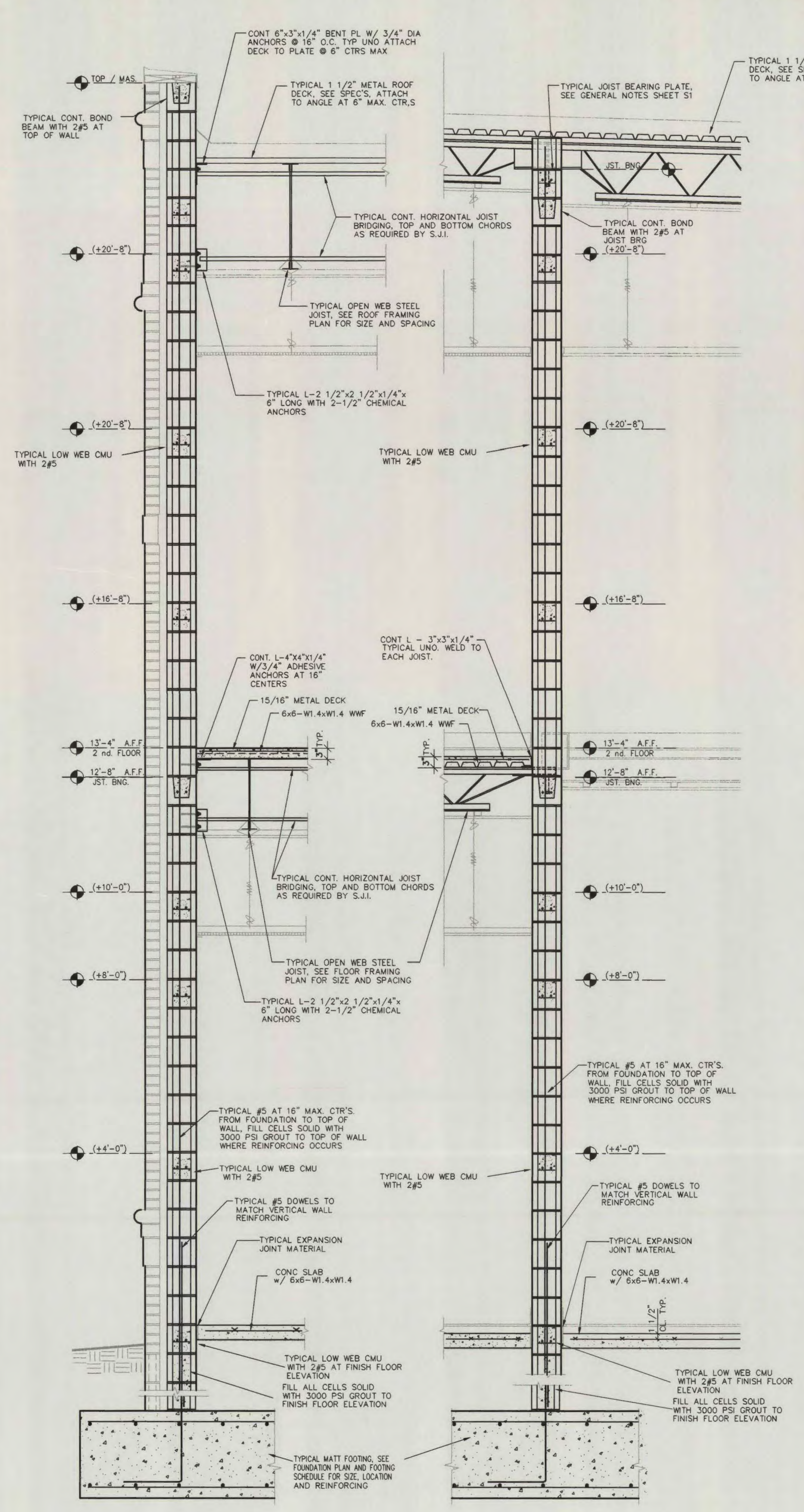
REVISIONS	
ALTERATIONS AND ADDITIONS TO <b>MYRTLE BEACH HIGH SCHOOL</b> MYRTLE BEACH, SOUTH CAROLINA Horry County Schools CONWAY, SOUTH CAROLINA	
DATE	MARCH 2003
COMMISSION NO.	0216
DRAWING NO.	S13
OF	
SHEET DESCRIPTION	WALL SECTIONS
DWN:	CHK:





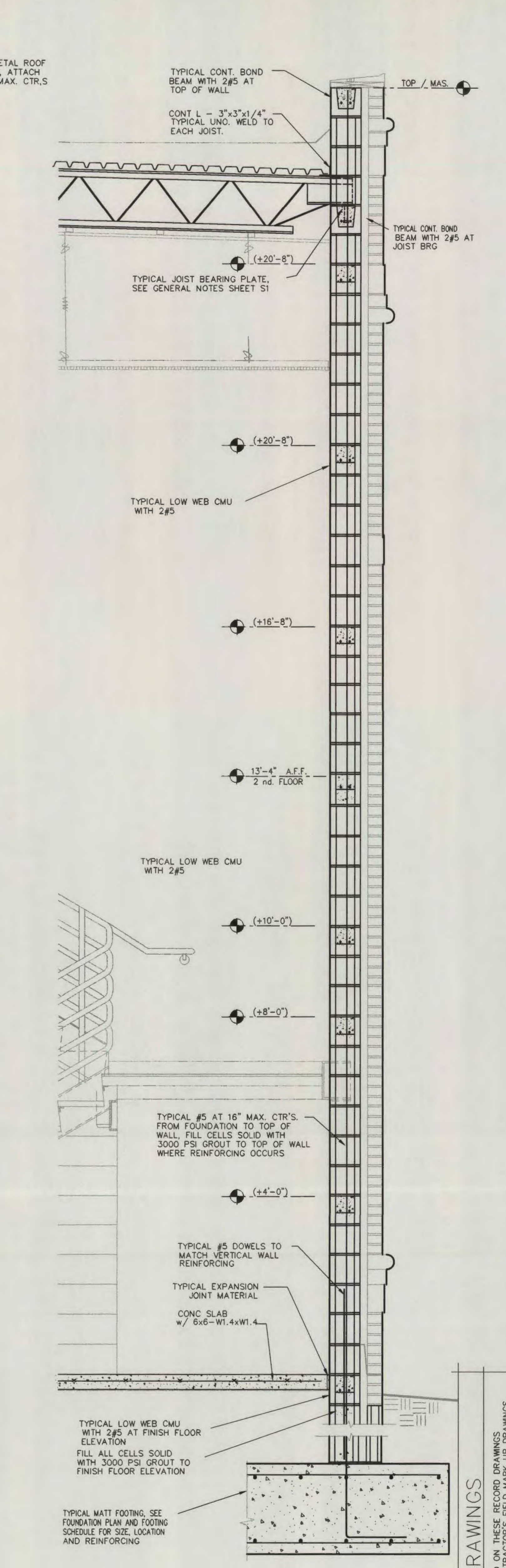
19  
S14  
ENTRY CORRIDOR AT EXISTING BLDG.  
AND NEW 2-STORY SCIENCE ROOMS

SCALE: [1" = 1'-0"]



20  
S14  
TYPICAL PARAPET END WALL AT  
NEW 2-STORY CLASSROOM ADDITIONS

SCALE: [1" = 1'-0"]



21  
S14  
TYPICAL SECTION THRU NEW STAIRS

SCALE: [1" = 1'-0"]

RECORD DRAWINGS

INFORMATION PROVIDED ON THESE RECORD DRAWINGS  
IS THE PROPERTY OF MARRY ENGINEERING, INC., L.L.C.  
AND IS NOT TO BE REPRODUCED OR TRANSMITTED IN ANY FORM  
WITHOUT THE WRITTEN PERMISSION OF MARRY ENGINEERING, INC., L.L.C.

DATE	MARCH 2003
COMMISSION NO.	0216
DRAWING NO.	S14
OF	
SHEET DESCRIPTION	WALL SECTIONS
DWN:	CHK: