

SECOND FLOOR PLAN - ZONE 'F'
 SCALE: 1/8" = 1'-0"

WALL / PARTITION LEGEND

- 1. 8" CMU, FILL HEIGHT FROM FLOOR TO DECK ABOVE & SEALED TIGHT TO DECK ABOVE. W/ 2 LAYERS 5/8" GYP. BO. OVER 3.5" METAL STUDS. W/ 4" SOUND ABSORPTION DETAIL. 11 & 12/44.8
- 2. EXISTING MASONRY WALL SEALED TIGHT TO DECK ABOVE. SEE ADDITIONAL DETAIL. 12/44.8
- 3. 8" CMU, FILL HEIGHT FROM FLOOR TO DECK ABOVE. W/ 2 LAYERS 5/8" GYP. BO. OVER 3.5" METAL STUDS. W/ 4" SOUND ABSORPTION DETAIL. 12/44.8
- 4. 12" CMU, FILL HEIGHT FROM FLOOR TO DECK ABOVE. CORE WITH 1/2" ACTUAL WIDTH. 11/5/97
- 5. 8" CMU, FILL HEIGHT FROM FLOOR TO DECK ABOVE. CORE WITH 1/2" ACTUAL WIDTH. 11/5/97
- 6. 8" CMU, FILL HEIGHT FROM FLOOR TO DECK ABOVE. CORE WITH 1/2" ACTUAL WIDTH. 11/5/97
- 7. 8" CMU, FILL HEIGHT FROM FLOOR TO DECK ABOVE. CORE WITH 1/2" ACTUAL WIDTH. 11/5/97
- 8. 8" CMU, FILL HEIGHT FROM FLOOR TO DECK ABOVE. CORE WITH 1/2" ACTUAL WIDTH. 11/5/97
- 9. 8" CMU, FILL HEIGHT FROM FLOOR TO DECK ABOVE. CORE WITH 1/2" ACTUAL WIDTH. 11/5/97
- 10. 8" CMU, FILL HEIGHT FROM FLOOR TO DECK ABOVE. CORE WITH 1/2" ACTUAL WIDTH. 11/5/97
- 11. 8" CMU, FILL HEIGHT FROM FLOOR TO DECK ABOVE. CORE WITH 1/2" ACTUAL WIDTH. 11/5/97
- 12. 8" CMU, FILL HEIGHT FROM FLOOR TO DECK ABOVE. CORE WITH 1/2" ACTUAL WIDTH. 11/5/97
- 13. 8" CMU, FILL HEIGHT FROM FLOOR TO DECK ABOVE. CORE WITH 1/2" ACTUAL WIDTH. 11/5/97
- 14. 8" CMU, FILL HEIGHT FROM FLOOR TO DECK ABOVE. CORE WITH 1/2" ACTUAL WIDTH. 11/5/97
- 15. 8" CMU, FILL HEIGHT FROM FLOOR TO DECK ABOVE. CORE WITH 1/2" ACTUAL WIDTH. 11/5/97

GENERAL NOTES

1. COORDINATE SIZE AND LOCATION OF ALL CONCRETE, MASONRY, PARTITION WALLS AND PARTITIONS WITH THE REFLECTED CEILING PLANS FOR PARTITION WALLS. VERIFY QUANTITY, SIZE, AND LOCATION OF ALL FLOOR, ROOF, AND WALL OPENINGS. PROVIDE ALL FINISHES SHOWN OR REQUIRED FOR THE COMPLETION OF THE WORK. PROVIDE ALL FINISHES SHOWN OR REQUIRED FOR THESE OPENINGS PER SPECIFICATIONS.
2. REFER TO THE SAFETY PLANS FOR LOCATIONS OF REQUIRED FREE RESISTANCE CORNER. THE REQUIRED FREE RESISTANCE CORNER SHALL BE SHOWN ON THE REFLECTED CEILING PLANS.
3. REFER TO REFLECTED CEILING PLANS FOR EXTENSION OF PARTITION WALLS BEING DEMOLISHED.
4. REFER TO STRUCTURAL DRAWINGS FOR ALL WIND FRAME LOCATIONS AT INTERIOR AND EXTERIOR WALLS.
5. REFER TO ALL SERIES DRAWINGS FOR FLOOR FINISH PATTERNS AND ALL STRUCTURAL DETAILS.
6. VERIFY ALL DIMENSIONS IN FIELD.
7. PROVIDE WOOD BLOCKING WITHIN STUD WALLS FROM WALL MOUNTED ITEMS (i.e. GRAF BARS, TOWER LIGHTS, FIRE ALARMS, SPEAKERS, WALL STOPS, ACCENT LIGHTS, ETC.) TO BE INSTALLED IN FIELD.
8. REFER TO EXTERIOR ELEVATIONS AND FINISH DETAILS FOR LOCATIONS OF CORNER JOINTS IN EXTERIOR WALLS.
9. REFER TO DRAWING A1.2F FOR THE EXTERIOR ELEVATION LEGEND.



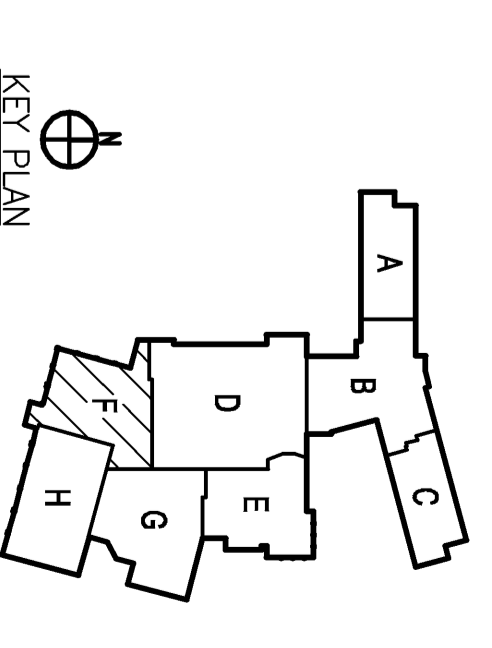
REGISTRATION SEAL

CONSULTANT

PROJECT TITLE
Portage Central High School

Portage Public Schools
 Portage, Michigan

DRAWING TITLE
 Second Floor Plan - Zone 'F'



ISSUE DATES

DATE	ISSUED FOR
01-23-09	8065
01-07-09	52% CONSTRUCTION DOCUMENTS
10-29-08	50% CONSTRUCTION DOCUMENTS
09-03-08	100% DESIGN DEVELOPMENT
08-06-08	50% DESIGN DEVELOPMENT

PROJECT NO.

07145

DRAWING NO.
A1.2F