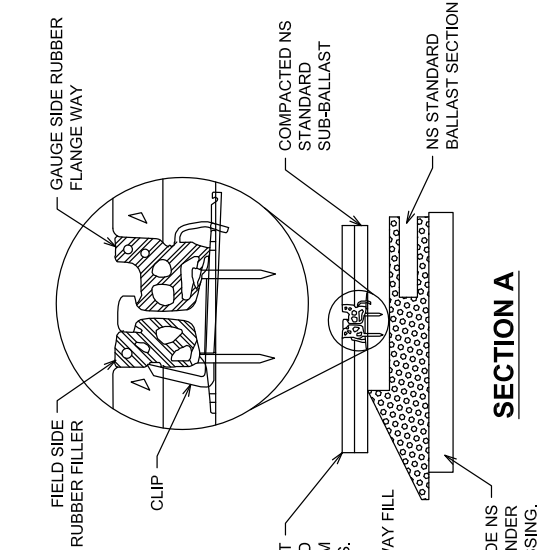


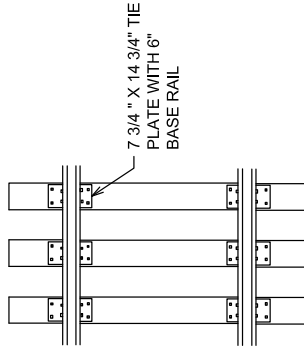
### ACUTE ANGLE CROSSING

ON NEW CONSTRUCTION PROVIDE NS STANDARD SUB-BALLAST 6" THICK, UNDER FULL WIDTH AND LENGTH OF CROSSING.



### SECTION A

ALL SPIKES FOR 110# THRU 141# RAIL SHALL BE DRIVEN IN HOLES AS SHOWN BELOW.



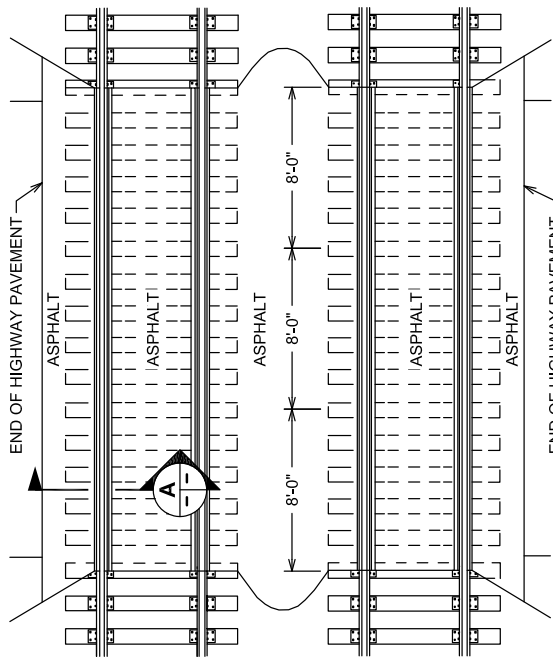
### SPIKING PATTERN

#### PAVING NOTES:

- PAVEMENT TO BE FULL DEPTH ASPHALT, EXCEPT LIGHTLY USED PRIVATE CROSSINGS AND FARM CROSSINGS. THESE TYPE CROSSINGS ARE TO HAVE COMPACTED NS STANDARD SUB-BALLAST WITH 4" MAXIMUM ASPHALT.
- WHERE HIGHWAY OR STREET HAVE SEPARATE SIDEWALKS, THE ENTIRE WIDTH OF CROSSING TO THE OUTSIDE EDGE OF SIDEWALK, WILL BE PAVED, WHERE PRACTICAL.
- WHEN NECESSARY PROVIDE DRAINAGE BETWEEN TRACKS.
- TO ALLOW FOR COMPACTION OF PAVING UNDER VEHICULAR TRAFFIC, THE SURFACE OF THE ASPHALT PAVING SHALL BE RAISED 3/8" ABOVE THE TOP OF THE RUBBER FLANGE WAYS FOR THE WIDTH OF THE ROADWAY.
- IN FULL DEPTH CROSSINGS, LAY ASPHALT IN TWO LIFTS.
- JAM STONE OR ASPHALT UNDER RUBBER FLANGE WAY BETWEEN TIES - BOTH FIELD AND GAUGE SIDES. **FILL ALL VOIDS.**

#### TIE PLATE NOTES:

- WORN PLATES MUST BE REPLACED WHEN CROSSING IS RENEWED.
- STANDARD TIE PLATES TO BE USED FOR 6" BASE RAIL ARE 7 3/4" X 14 3/4".



### RIGHT ANGLE CROSSING

#### RUBBER FLANGE NOTES:

- CLEAN BASE, WEB AND UNDER THE HEAD OF THE RAIL.
  - FASTEN LENGTHS TOGETHER WITH END CLIPS AND LAY RUBBER AGAINST THE RAIL.
  - INSTALL CLIPS UNDER BOTH RAILS BETWEEN EVERY TIE IN THE CROSSING.
  - RUBBER FLANGE WAY FOR 100-LB RAIL 270 995291
  - RUBBER FLANGE WAY FOR 100RE THROUGH 116RE RAIL 270 991789
  - RUBBER FLANGE WAY FOR 132RE THROUGH 141AB RAIL 270 008791
- (INCLUDES ALL HARDWARE AND IS FURNISHED IN 8 TRACK FOOT SECTIONS.)

**NORFOLK SOUTHERN**  
PUBLIC PROJECTS MANUAL  
TYPICAL DRAWINGS

AT-GRADE CROSSING DETAILS  
ASPHALT PAVING WITH RUBBER  
FLANGE WAY

REF. NO.: PLAN 7-5B  
DATE: JULY 1, 2013  
DRAWING NO.: 19

REVISIONS	
DATE	DESCRIPTION