

VICINITY MAP  
N.T.S

# JACKSON COUNTY CORRECTIONAL INSTITUTION PROBATION DETENTION CENTER

## GENERATOR/ATS UPGRADE

265 I W DAVIS RD,  
JEFFERSON, GA 30549

JULY 02, 2021  
PROJECT NO. 21103



SATELLITE MAP  
N.T.S

### PROJECT TEAM

PROJECT ENGINEER  
ENG GROUP, INC.  
CONTACT: MITCH MAGHIARI  
3100 FIVE FORKS TRICKUM RD, SUITE 601  
LILBURN, GEORGIA 30047  
TEL - (770) 573-3537  
EMAIL - MITCHM@ENG-GROUP.COM

### DRAWING LIST

T-0.0	TITLE SHEET
E-1.1	ONE LINE DIAGRAM -- DEMO & NEW
E-1.2	ONE LINE DIAGRAM -- FINAL LAYOUT
E-2.0	PARTIAL ONE LINE DIAGRAM -- EXISTING CONDITIONS
E-2.1	PARTIAL SITE & FLOOR PLAN -- POWER -- DEMO
E-3.1	PARTIAL SITE & FLOOR PLAN -- POWER -- NEW
E-4.1	PARTIAL SITE & FLOOR PLAN -- POWER -- NEW
E-5.1	DETAIL
E-5.2	DETAILS
E-5.3	SPECIFICATION & SYMBOLS
E-5.4	GENERAL & DEMOLITION NOTES

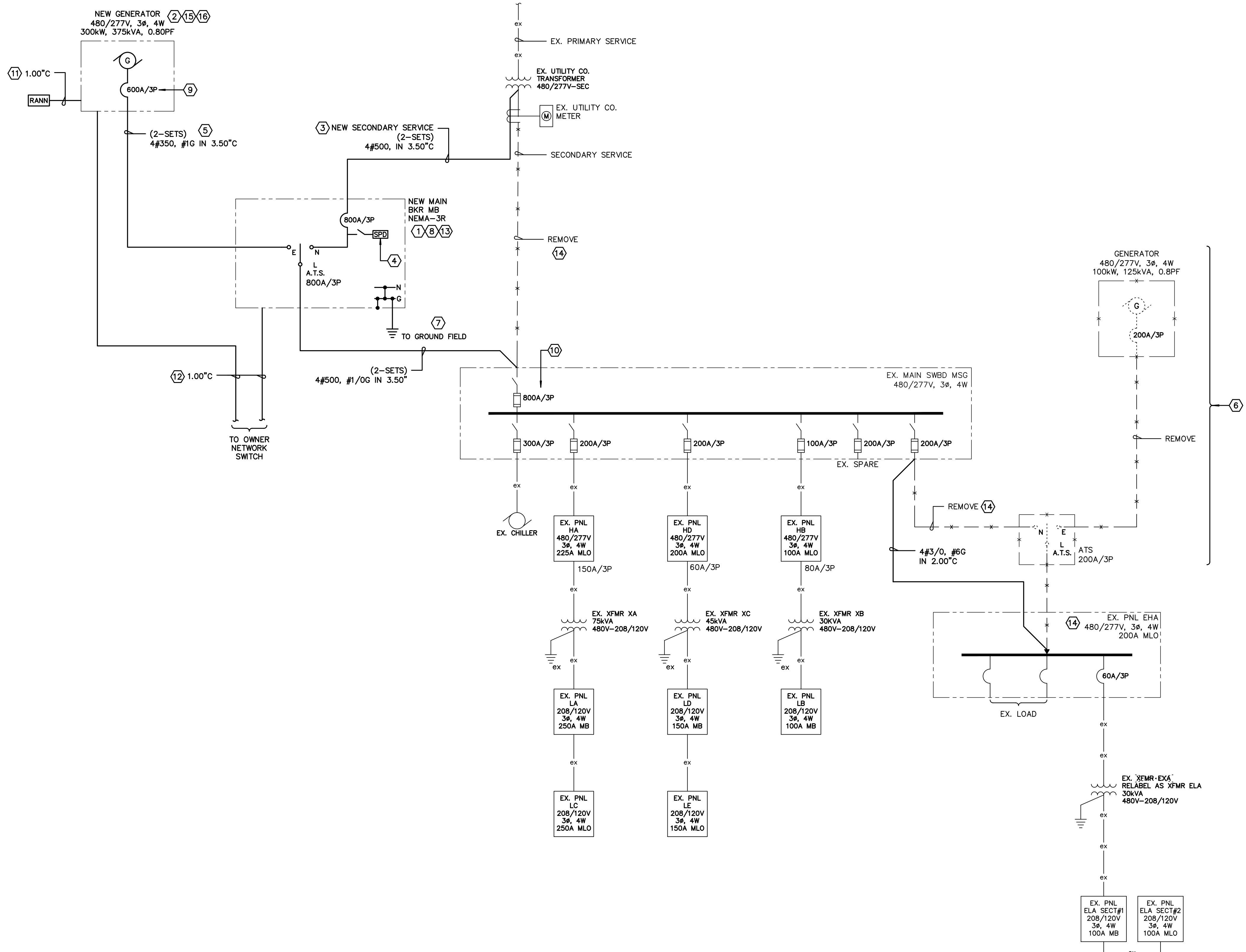
### APPLICABLE CODES

INTERNATIONAL BUILDING CODE, 2018 EDITION,  
INTERNATIONAL FIRE CODE, 2018 EDITION  
INTERNATIONAL PLUMBING CODE, 2018 EDITION  
INTERNATIONAL MECHANICAL CODE, 2018 EDITION  
INTERNATIONAL FUEL GAS CODE, 2018 EDITION  
NATIONAL ELECTRICAL CODE, 2020 EDITION  
ALL THE ABOVE CODES SHALL COMPLY WITH CITY, COUNTY & GEORGIA AMENDMENTS

### SCOPE OF PROJECT:

- JACKSON COUNTRY CORRECTION INSTITUTION INTENDS TO:
- REPLACE EXISTING 100kW (NAT GAS) WITH NEW 300kW GENERATOR (24HRS DIESEL FUEL RESERVE)
  - INSTALL A NEW MAIN BKR
  - REPLACE EXISTING 200A ATS WITH NEW 800A ATS
  - MODIFY EXISTING POWER DISTRIBUTION SYSTEM AS REQUIRED BY NEW GENERATOR, ATS & CONFIGURATION

A	ADDED OWNER COMMENTS + REMOVED UPS + EXTERIOR ATS	MM	CM/MM	07/02/21
0	ISSUED FOR REVIEW	MM	CM/MM	06/28/21
REV. NO.	REVISION DESCRIPTION	APP'D.	DRN/CHKD	DATE
EXCEPT AS MAY BE OTHERWISE PROVIDED BY CONTRACT THESE DRAWINGS AND SPECIFICATIONS ARE THE PROPERTY OF JACKSON COUNTY GA AND ARE ISSUED IN STRICT CONFIDENCE. THEY SHALL NOT BE REPRODUCED, COPIED, OR USED WITHOUT WRITTEN PERMISSION BY JACKSON COUNTY GA.		NAME JACKSON COUNTY CORRECTIONAL INSTITUTION PROBATION DETENTION CENTER 265 I W DAVIS RD, JEFFERSON, GA 30549		
ENG Group, Inc. 3100 FIVE FORKS TRICKUM RD, STE 601 LILBURN, GA 30047 TEL (770) 573-3537 FAX (866) 531-2419 EMAIL: mitchm@eng-group.com		TITLE <b>TITLE SHEET</b>		
DRAWN CM	CHECKED MM	APP'D. MM	SHEET	DRAWING NO. <b>T-00</b>
DATE 07/02/21	SCALE AS NOTED	ENG GROUP PROJECT NO. 21103		REV. 0



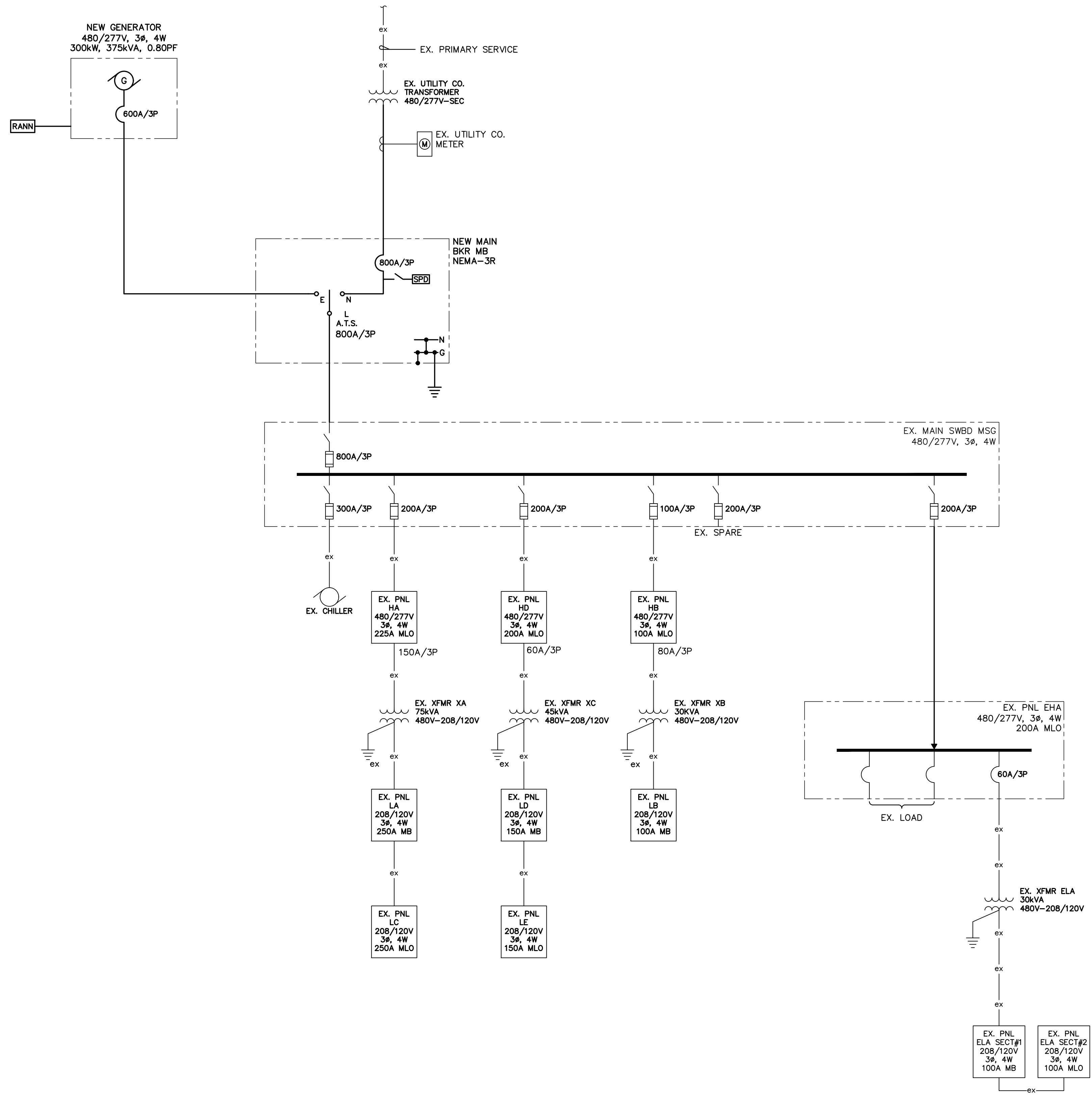
**NOTES:** (THIS SHEET ONLY, EXCEPT AS NOTED)

- 1 ALL BREAKERS 100A AND LARGER SHALL BE SET AND TESTED BY APPROVED TESTING AGENCY AND RESULTING REPORT SUBMITTED TO ENGINEER PRIOR TO CONNECTING THE LOAD. BREAKER IS NOT TO BE PLACED INTO SERVICE UNTIL HAS BEEN TESTED AND A TESTING LABEL HAS BEEN APPLIED BY THE TESTING AGENCY.
- 2 NEUTRAL SHALL NOT BE BONDED TO GRD AT GENERATOR (TYPICAL).
- 3 VERIFY AND COMPLY WITH UTILITY COMPANY REQUIREMENTS FOR INSTALLATION OF SERVICES OF THIS TYPE.
- 4 SPD/SURGE PROTECTION DEVICE, 277/480V-3PH-4W-GND, 160KA PER PHASE, WITH AUXILIARY CONTACTS FOR MONITORING, COUNTER. THE LENGTH OF CABLES SHALL NOT EXCEED 4'-0". MANUFACTURER-SAME AS MAIN BREAKER (SHALL BE LOCATED IN BKR ENCLOSURE).
- 5 EXTERIOR FEEDERS SHALL BE INSTALLED UNDERGROUND (TYP).
- 6 EQUIPMENT SCHEDULED FOR REMOVAL AFTER EXISTING LOAD HAS BEEN TRANSFERRED TO THE NEW SYSTEM.
- 7 SEE GROUNDING PLAN AND DETAILS FOR ADDITIONAL REQUIREMENTS.
- 8 SERVICE ENTRANCE RATED, PROVIDE AUX CONTACT FOR FUTURE MONITORING (BKR OPEN/TRIPPED ALARM).
- 9 100% RATED, PROVIDE AUX CONTACT FOR FUTURE MONITORING (BKR OPEN/TRIPPED ALARM).
- 10 REMOVE N-G CONNECTION WHEN LOAD IS TRANSFERRED TO NEW ATS/GEN SYSTEM. REMOVE GRD FAULT & ASSOCIATED WIRING + PROVIDE BLANK COVER PLATES.
- 11 PROVIDE WIRING PER MANUFACTURER APPROVED SHOP DWGS.
- 12 PROVIDE CAT-5E WIRING TO OWNER'S NETWORK SWITCH. COORDINATE TERMINATION LOCATION WITH OWNER. TEST INTERFACE WITH OWNER IT DEPARTMENT + PROVIDE REPORT FOR CLOSE-OUT.
- 13 MAIN BKR AND ATS-SERVICE RATED ATS/NEMA-3R (IN ONE ENCLOSURE), ASCO OR APPROVED EQUAL. PROVIDE:
  - KEY OPERATED THREE POSITION OPERATION SELECTOR SWITCH - NO LOAD TEST + AUTO + LOAD TEST.
  - METERING FOR CURRENT, VOLTAGE, REAL POWER, REACTIVE POWER, ENERGY USE, POWER FACTOR AND FREQUENCY ON THE LOAD SIDE. METERING SHALL BE TRUE RMS TYPE, 1% ACCURACY FOR VOLTAGE AND 0.5% FOR CURRENTS.
  - DRY CONTACTS FOR ALARMS AS INDICATED ON DETAILS.
  - MODBUS + TCP/IP PORTS.
  - ATS/ENGINE EXERCISER WITH ON/OFF POSITION + TO BE PROGRAMMED PER OWNERS REQUIREMENTS.
  - 35KA RATING.
  - SETTINGS
    1. ADJUSTABLE SOLID STATE TIME DELAY TRANSFER BETWEEN SOURCES, 3-15 SECONDS, SET AT 3 SECONDS.
    2. ADJUSTABLE SOLID STATE TIME DELAY ON ENGINE START, 3-300 SECONDS MINIMUM, SET AT 3 SECONDS.
    3. ADJUSTABLE SOLID STATE TIME DELAY ON RETRANSFER TO COMMERCIAL SOURCE, 0-9999 SECONDS MINIMUM, SET AT 300 SECONDS.
    4. ADJUSTABLE SOLID STATE COOL-DOWN TIMER, 0-9999 SECONDS, SET AT 300 SECONDS.
  - FIELD START-UP + SITE INTEGRATION TEST.
  - SITE TRAINING (MIN 4 HRS).
  - 5 YEARS FULL WARRANTY.
- 14 FACILITY SHALL REMAIN FUNCTIONAL AT ALL TIME. PROVIDE REQUIRED MOPS'S (PROVIDE REQUIRED TEMP WIRING).
- 15 PROVIDE COST FOR KOHLER 5-YRS REMOTE MONITORING VIA TXT + EMAIL + MONTHLY REPORTS (TO MULTIPLE RECIPIENTS - CELL PHONE #'S + EMAIL ADDRESSES TO BE PROVIDED BY OWNER).
- 16 PROVIDE
  - COST FOR STANDARD ENCLOSURE IN LIEU OF SOUND ATTENUATED ENCLOSURE.
  - DEDUCT FOR COUNTY SUPPLIED DIESEL FUEL.
  - DEDUCT FOR COUNTY TO PROVIDE CONCRETE PAD + TRENCHING. COORDINATION REQUIRED BY SUCCESSFUL BIDDER.
  - LOAD BANK TESTING - 2 HRS + TRANSIENTS - REQUIRED ONLY ON SITE.

**1 ONE LINE DIAGRAM - DEMO & NEW**  
E-1.1 SCALE: N.T.S

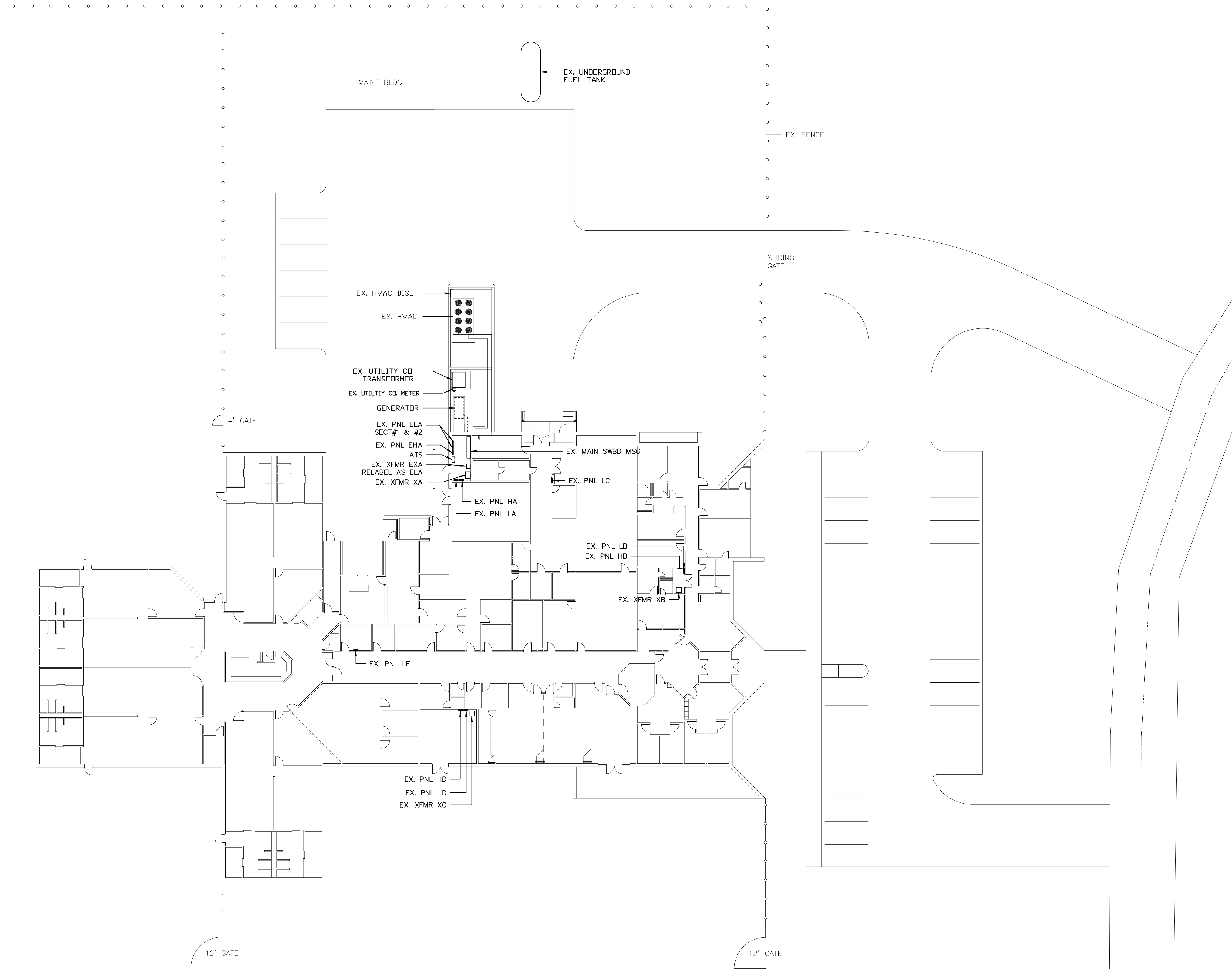
A	ADDED OWNER COMMENTS + REMOVED UPS + EXTERIOR ATS	MM	CM/MM	07/02/21
0	ISSUED FOR REVIEW	MM	CM/MM	06/28/21
REV. NO.	REVISION DESCRIPTION	APP'D.	DRN/CND	DATE
EXCEPT AS MAY BE OTHERWISE PROVIDED BY CONTRACT THESE DRAWINGS AND SPECIFICATIONS ARE THE PROPERTY OF JACKSON COUNTY GA AND ARE ISSUED IN STRICT CONFIDENCE. THEY SHALL NOT BE REPRODUCED, COPIED, OR USED WITHOUT WRITTEN PERMISSION BY JACKSON COUNTY GA.		NAME JACKSON COUNTY CORRECTIONAL INSTITUTION PROBATION DETENTION CENTER 265 I W DAVIS RD, JEFFERSON, GA 30549		
ENG Group, Inc. 3100 FIVE FORKS TRUCKUM RD, STE 601 LILBURN, GA 30047 TEL: (770) 573-3537 FAX: (866) 531-2419 EMAIL: mitchm@eng-group.com		TITLE <b>ONE LINE DIAGRAM - DEMO &amp; NEW</b>		
DRAWN	CHECKED	APP'D.	SHEET	DRAWING NO.
CM	MM	MM		E-11
DATE	SCALE	END GROUP PROJECT NO.		REV.
07/02/21	AS NOTED	21103		0





**1 ONE LINE DIAGRAM - FINAL LAYOUT**  
 E-1.2 SCALE: N.T.S

REV. NO.	REVISION DESCRIPTION	APP'D.	DRN/CHKD	DATE
A	ADDED OWNER COMMENTS + REMOVED UPS + EXTERIOR ATS	MM	CM/MM	07/02/21
0	ISSUED FOR REVIEW	MM	CM/MM	06/28/21
EXCEPT AS MAY BE OTHERWISE PROVIDED BY CONTRACT THESE DRAWINGS AND SPECIFICATIONS ARE THE PROPERTY OF JACKSON COUNTY GA AND ARE ISSUED IN STRICT CONFIDENCE. THEY SHALL NOT BE REPRODUCED, COPIED, OR USED WITHOUT WRITTEN PERMISSION BY JACKSON COUNTY GA.		NAME JACKSON COUNTY CORRECTIONAL INSTITUTION PROBATION DETENTION CENTER 265 I W DAVIS RD, JEFFERSON, GA 30549		
ENG Group, Inc. 3100 FIVE FORKS TRICKUM RD, STE 601 LILBURN, GA 30047 TEL (770) 575-3537 FAX (866) 531-2419 EMAIL: mitchm@eng-group.com		TITLE <b>ONE LINE DIAGRAM - FINAL LAYOUT</b>		
DRAWN	CHECKED	APP'D.	SHEET	DRAWING NO.
CM	MM	MM		E-12
DATE	SCALE	ENG GROUP PROJECT NO.		REV.
07/02/21	AS NOTED	21103		0

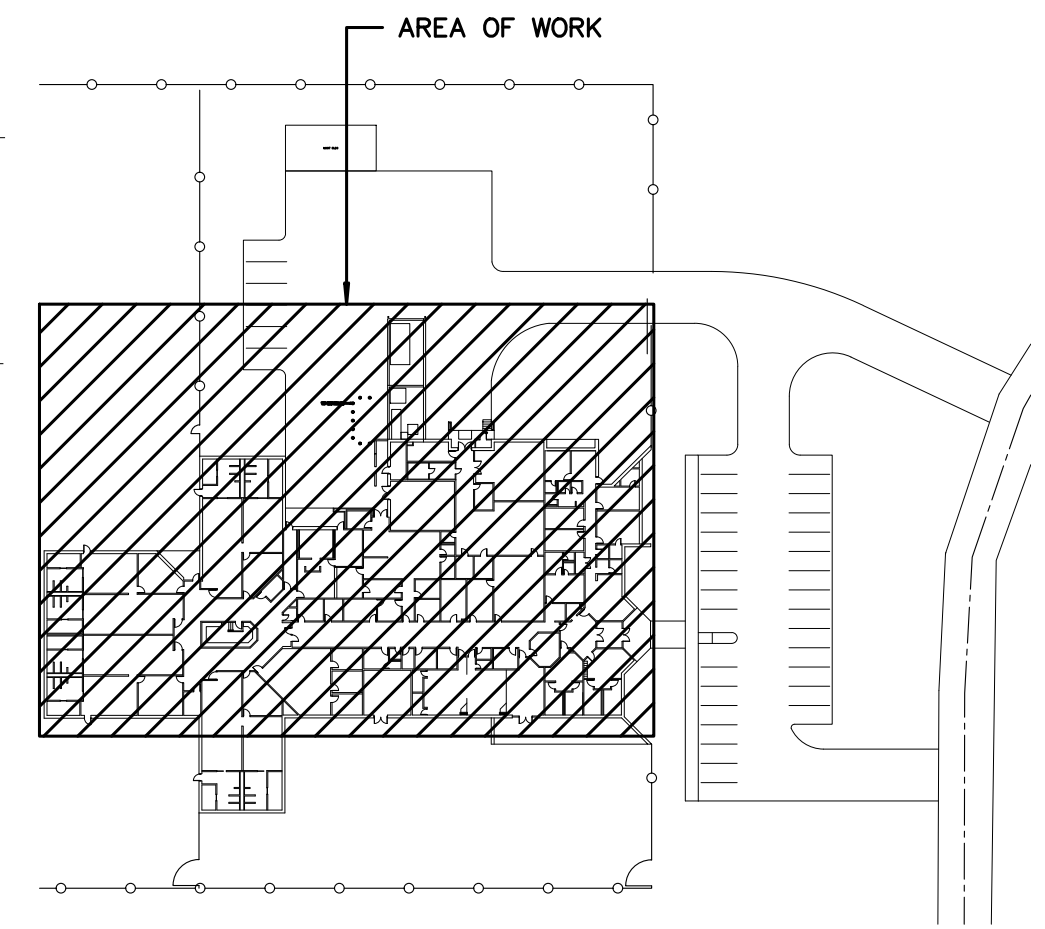
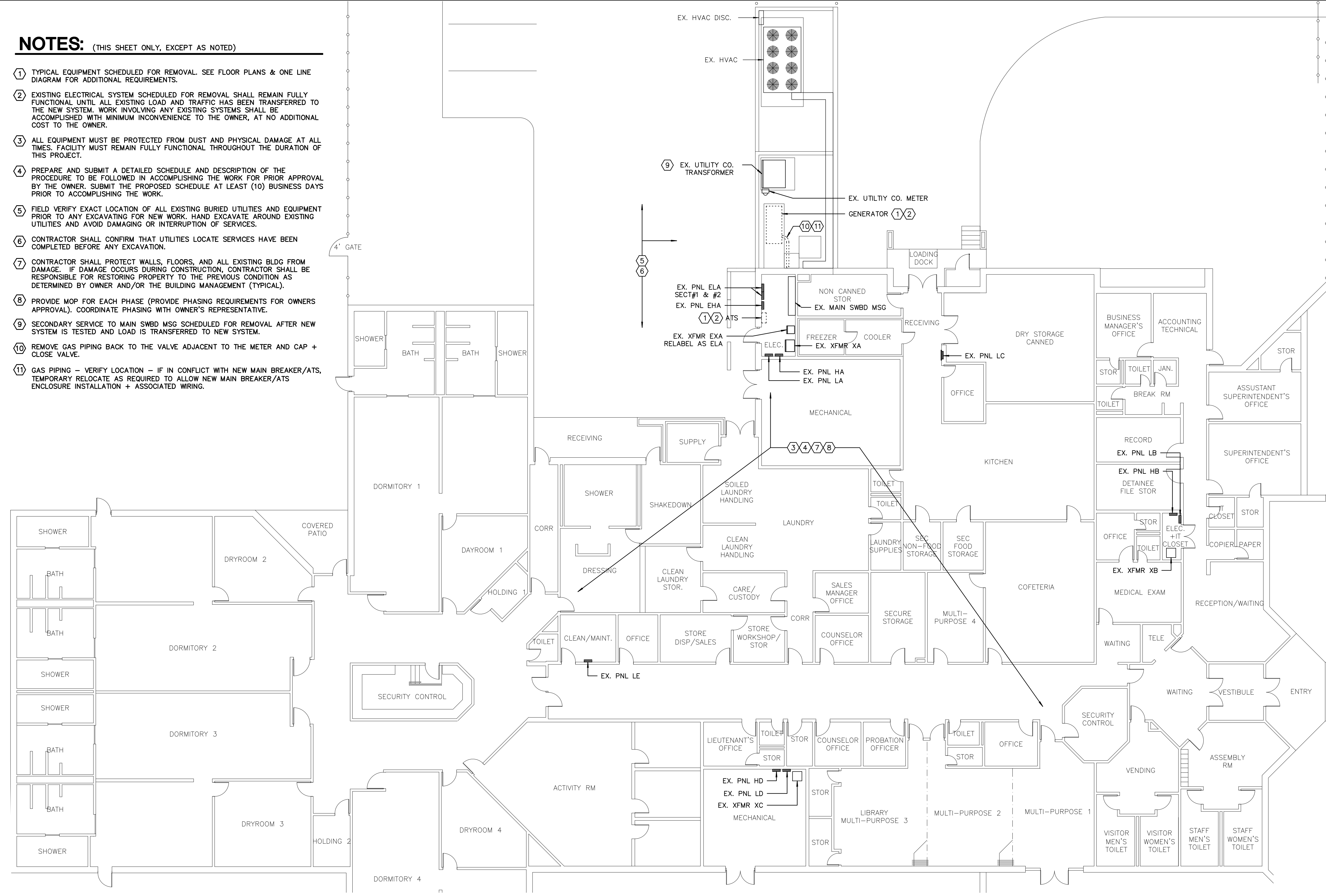


**1 PARTIAL SITE & FLOOR PLAN - EXISTING CONDITIONS**  
 E-2.0 SCALE: 1" = 20'

REV. NO.	REVISION DESCRIPTION	APP'D.	DRN/CRD	DATE
A	ADDED OWNER COMMENTS + REMOVED UPS + EXTERIOR ATS	MM	CM/MM	07/02/21
0	ISSUED FOR REVIEW	MM	CM/MM	06/28/21
EXCEPT AS MAY BE OTHERWISE PROVIDED BY CONTRACT THESE DRAWINGS AND SPECIFICATIONS ARE THE PROPERTY OF JACKSON COUNTY GA AND ARE ISSUED IN STRICT CONFIDENCE. THEY SHALL NOT BE REPRODUCED, COPIED, OR USED WITHOUT WRITTEN PERMISSION BY JACKSON COUNTY GA.		NAME JACKSON COUNTY CORRECTIONAL INSTITUTION PROBATION DETENTION CENTER 265 I W DAVIS RD, JEFFERSON, GA 30549		
ENG Group, Inc. 3100 FIVE FORKS TRUCKUM RD, STE 601 LILBURN, GA 30047 TEL: (770) 575-3537 FAX: (866) 531-2419 EMAIL: mitchm@eng-group.com		TITLE <b>PARTIAL SITE &amp; FLOOR PLAN - EXISTING CONDITIONS</b>		
DRWN	CM	CHECKED	MM	APP'D.
DATE	07/02/21	SCALE	AS NOTED	ENG GROUP PROJECT NO.
				21103
SHEET				DRWING NO.
				<b>E-20</b>
				REV.
				0

**NOTES:** (THIS SHEET ONLY, EXCEPT AS NOTED)

- 1) TYPICAL EQUIPMENT SCHEDULED FOR REMOVAL. SEE FLOOR PLANS & ONE LINE DIAGRAM FOR ADDITIONAL REQUIREMENTS.
- 2) EXISTING ELECTRICAL SYSTEM SCHEDULED FOR REMOVAL SHALL REMAIN FULLY FUNCTIONAL UNTIL ALL EXISTING LOAD AND TRAFFIC HAS BEEN TRANSFERRED TO THE NEW SYSTEM. WORK INVOLVING ANY EXISTING SYSTEMS SHALL BE ACCOMPLISHED WITH MINIMUM INCONVENIENCE TO THE OWNER, AT NO ADDITIONAL COST TO THE OWNER.
- 3) ALL EQUIPMENT MUST BE PROTECTED FROM DUST AND PHYSICAL DAMAGE AT ALL TIMES. FACILITY MUST REMAIN FULLY FUNCTIONAL THROUGHOUT THE DURATION OF THIS PROJECT.
- 4) PREPARE AND SUBMIT A DETAILED SCHEDULE AND DESCRIPTION OF THE PROCEDURE TO BE FOLLOWED IN ACCOMPLISHING THE WORK FOR PRIOR APPROVAL BY THE OWNER. SUBMIT THE PROPOSED SCHEDULE AT LEAST (10) BUSINESS DAYS PRIOR TO ACCOMPLISHING THE WORK.
- 5) FIELD VERIFY EXACT LOCATION OF ALL EXISTING BURIED UTILITIES AND EQUIPMENT PRIOR TO ANY EXCAVATING FOR NEW WORK. HAND EXCAVATE AROUND EXISTING UTILITIES AND AVOID DAMAGING OR INTERRUPTION OF SERVICES.
- 6) CONTRACTOR SHALL CONFIRM THAT UTILITIES LOCATE SERVICES HAVE BEEN COMPLETED BEFORE ANY EXCAVATION.
- 7) CONTRACTOR SHALL PROTECT WALLS, FLOORS, AND ALL EXISTING BLDG FROM DAMAGE. IF DAMAGE OCCURS DURING CONSTRUCTION, CONTRACTOR SHALL BE RESPONSIBLE FOR RESTORING PROPERTY TO THE PREVIOUS CONDITION AS DETERMINED BY OWNER AND/OR THE BUILDING MANAGEMENT (TYPICAL).
- 8) PROVIDE MOP FOR EACH PHASE (PROVIDE PHASING REQUIREMENTS FOR OWNERS APPROVAL). COORDINATE PHASING WITH OWNER'S REPRESENTATIVE.
- 9) SECONDARY SERVICE TO MAIN SWBD MSG SCHEDULED FOR REMOVAL AFTER NEW SYSTEM IS TESTED AND LOAD IS TRANSFERRED TO NEW SYSTEM.
- 10) REMOVE GAS PIPING BACK TO THE VALVE ADJACENT TO THE METER AND CAP + CLOSE VALVE.
- 11) GAS PIPING - VERIFY LOCATION - IF IN CONFLICT WITH NEW MAIN BREAKER/ATS, TEMPORARY RELOCATE AS REQUIRED TO ALLOW NEW MAIN BREAKER/ATS ENCLOSURE INSTALLATION + ASSOCIATED WIRING.



**KEY PLAN**  
SCALE: N.T.S

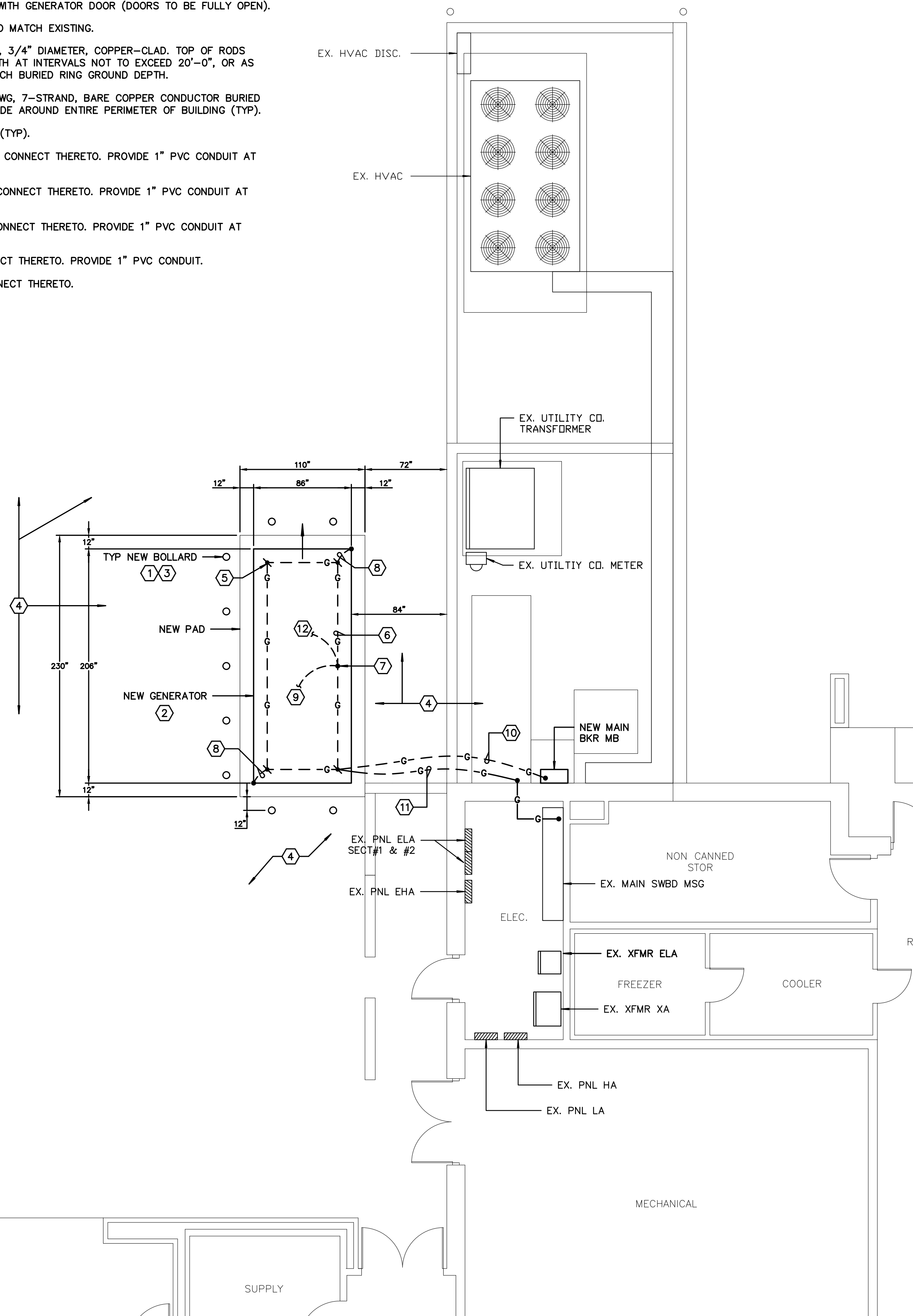
**1 PARTIAL SITE & FLOOR PLAN - POWER - DEMO**  
SCALE: 3/32" = 1'-0"

A	ADDED OWNER COMMENTS + REMOVED UPS + EXTERIOR ATS	MM	CM/MM	07/02/21
0	ISSUED FOR REVIEW	MM	CM/MM	06/28/21
REV. NO.	REVISION DESCRIPTION	APP'D.	DRN/CHKD	DATE
EXCEPT AS MAY BE OTHERWISE PROVIDED BY CONTRACT THESE DRAWINGS AND SPECIFICATIONS ARE THE PROPERTY OF JACKSON COUNTY GA AND ARE ISSUED IN STRICT CONFIDENCE. THEY SHALL NOT BE REPRODUCED, COPIED, OR USED WITHOUT WRITTEN PERMISSION BY JACKSON COUNTY GA.		NAME JACKSON COUNTY CORRECTIONAL INSTITUTION PROBATION DETENTION CENTER 265 I W DAVIS RD, JEFFERSON, GA 30549		
ENG Group, Inc. 3100 FIVE FORKS TRUCKUM RD, STE 601 LILBURN, GA 30047 TEL: (770) 575-3537 FAX: (866) 531-2419 EMAIL: mitchm@eng-group.com		TITLE <b>PARTIAL SITE &amp; FLOOR PLAN - POWER - DEMO</b>		
DRWN	CM	CHKD	MM	APP'D.
DATE	07/02/21	SCALE	AS NOTED	ENG GROUP PROJECT NO.
				21103
				DRAWING NO.
				<b>E-21</b>
				REV.
				0

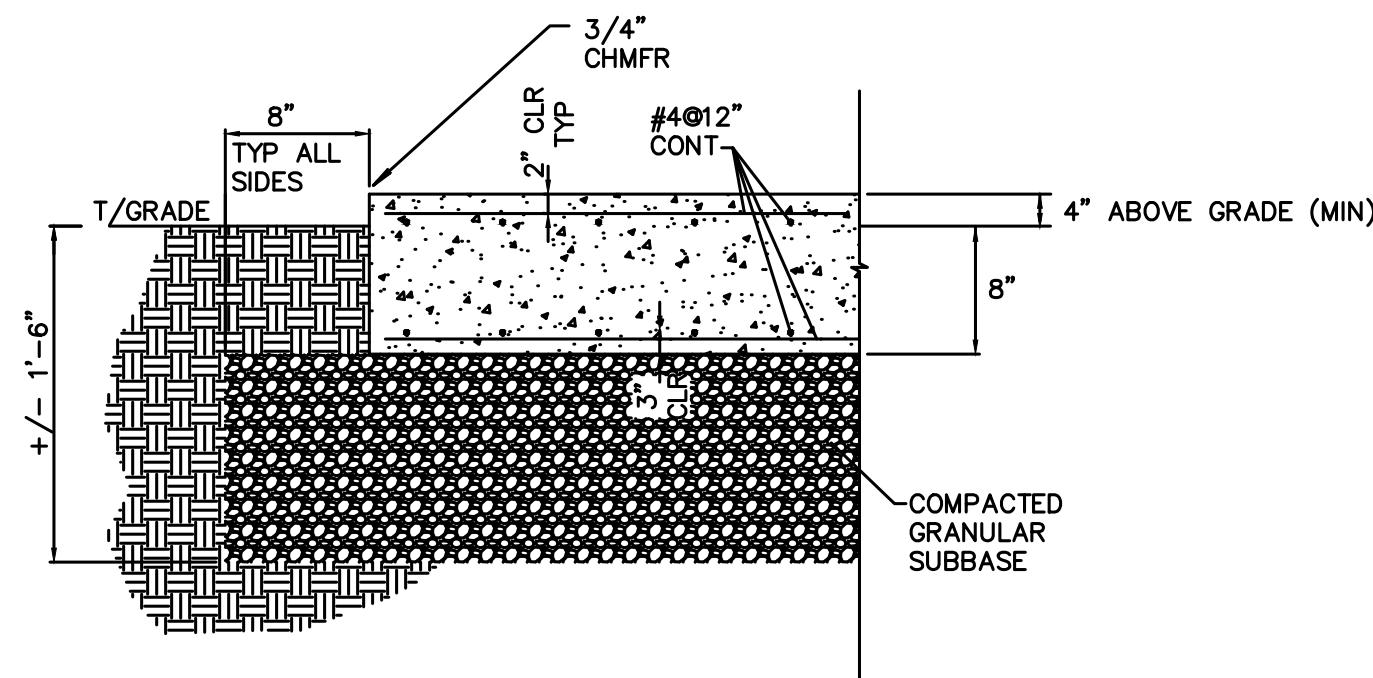


**NOTES:** (THIS SHEET ONLY, EXCEPT AS NOTED)

- ① PROVIDE NEW BOLLARD (TYP), SEE DETAILS FOR REQUIREMENTS.
- ② COORDINATE STUB-OUT LOCATION WITH OWNER'S FURNISHED GEN SHOP DWGS.
- ③ COORDINATE FINAL BOLLARDS LOCATIONS WITH GENERATOR DOOR (DOORS TO BE FULLY OPEN).
- ④ PATCH ASPHALT AND CONCRETE AREAS TO MATCH EXISTING.
- ⑤ TYPICAL DRIVEN GROUND ROD - 10' LONG, 3/4" DIAMETER, COPPER-CLAD. TOP OF RODS SHALL BE DRIVEN INTO UNDISTURBED EARTH AT INTERVALS NOT TO EXCEED 20'-0", OR AS INDICATED, TO A DEPTH OF 2'-6" TO MATCH BURIED RING GROUND DEPTH.
- ⑥ PROVIDE BURIED RING GROUND, (1) 2/0 AWG, 7-STRAND, BARE COPPER CONDUCTOR BURIED MINIMUM 2'-6" DEEP BELOW FINISHED GRADE AROUND ENTIRE PERIMETER OF BUILDING (TYP).
- ⑦ PROVIDE EXOTHERMIC WELD FOR THE TAP (TYP).
- ⑧ #2/0 TO THE GENERATOR SKID BASE AND CONNECT THERETO. PROVIDE 1" PVC CONDUIT AT STUB-OUT LOCATION (TYPICAL).
- ⑨ #2/0 TO THE GENERATOR GRD BUS AND CONNECT THERETO. PROVIDE 1" PVC CONDUIT AT STUB-OUT LOCATION (TYPICAL).
- ⑩ #2/0 TO NEW MAIN BKR GRD BUS AND CONNECT THERETO. PROVIDE 1" PVC CONDUIT AT STUB-OUT LOCATION.
- ⑪ #2/0 TO SWBD MSG GRD BUS AND CONNECT THERETO. PROVIDE 1" PVC CONDUIT.
- ⑫ #2/0 TO THE CONCRETE REBAR AND CONNECT THERETO.



**1 PARTIAL SITE & FLOOR PLAN - POWER - NEW**  
E-4.1 SCALE: 3/16" = 1'-0"

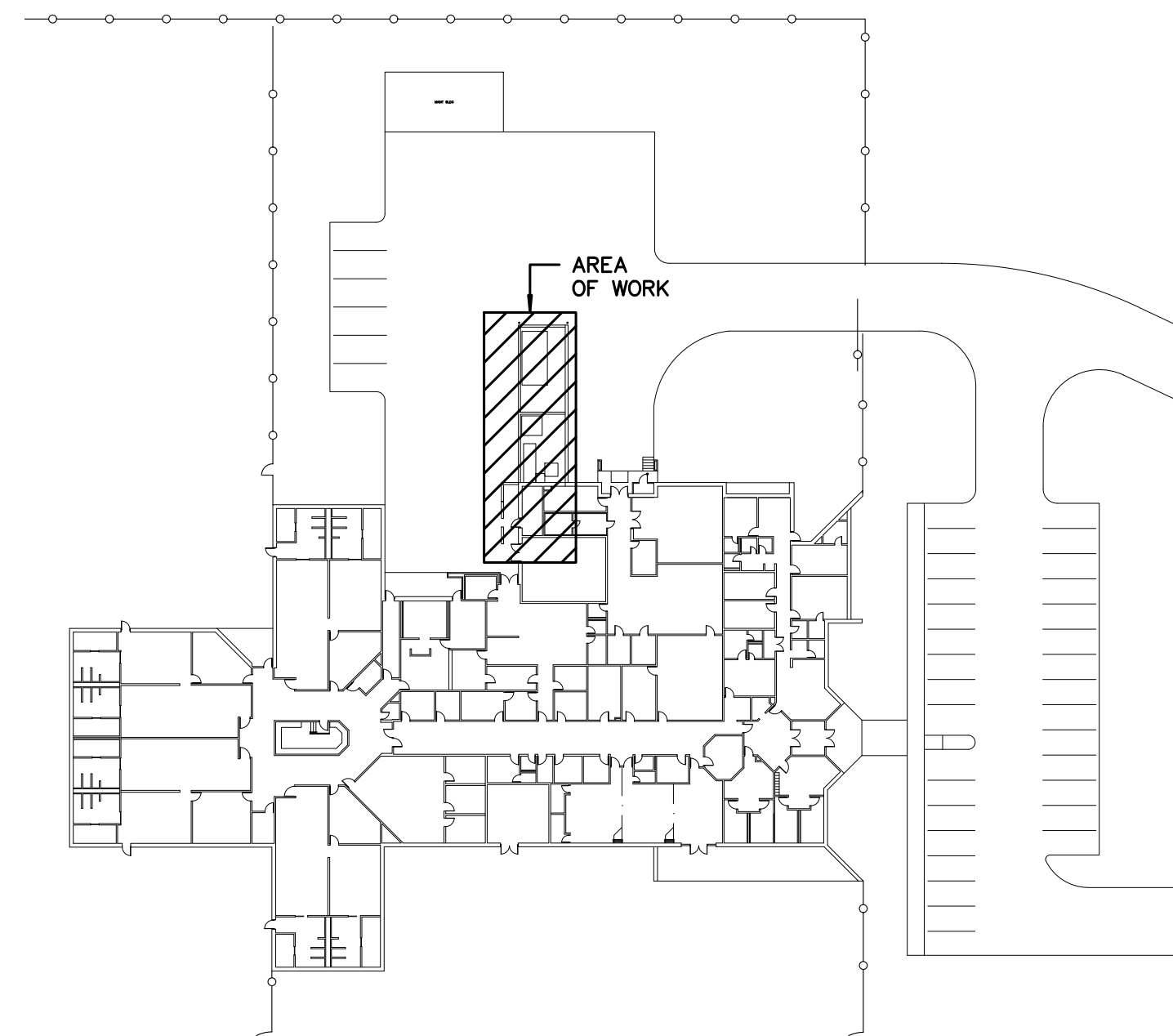


- NOTES:**
1. GENERATOR PAD DIMENSION SHALL BE COORDINATED WITH GENERATOR VENDOR APPROVED SHOP DRAWINGS. THE PAD SHALL EXTEND MIN 12" OVER THE GENERATOR FOOTPRINT EACH SIDE.
  2. FIELD CONDITIONS ASSUMED ARE 2,000 PSF MIN BEARING PRESSURE AND WATER TABLE 3'-6" MIN BELOW GRADE. FIELD VERIFY.
  3. DO NOT UNDERMINE EXISTING FOUNDATIONS. FIELD COORDINATE EXISTING CONDITIONS.
  4. CONTRACTOR SHALL VERIFY EXISTING CONDITIONS & NOTIFY VZB.
  5. DIMENSIONS SHALL BE COORDINATED WITH VENDORS APPROVED SHOP DWGS. THE PAD SHALL EXTEND MIN 12" OVER THE EQUIPMENT FOOTPRINT ON EACH SIDE.
  6. FIELD VERIFY AND COORDINATE WITH EXISTING SLOPE - PAD SHALL BE MIN 8" BELOW GRADE

**2 EQUIPMENT PAD DETAIL**  
E-4.1 SCALE: N.T.S

**CONCRETE AND REINFORCEMENT NOTES**

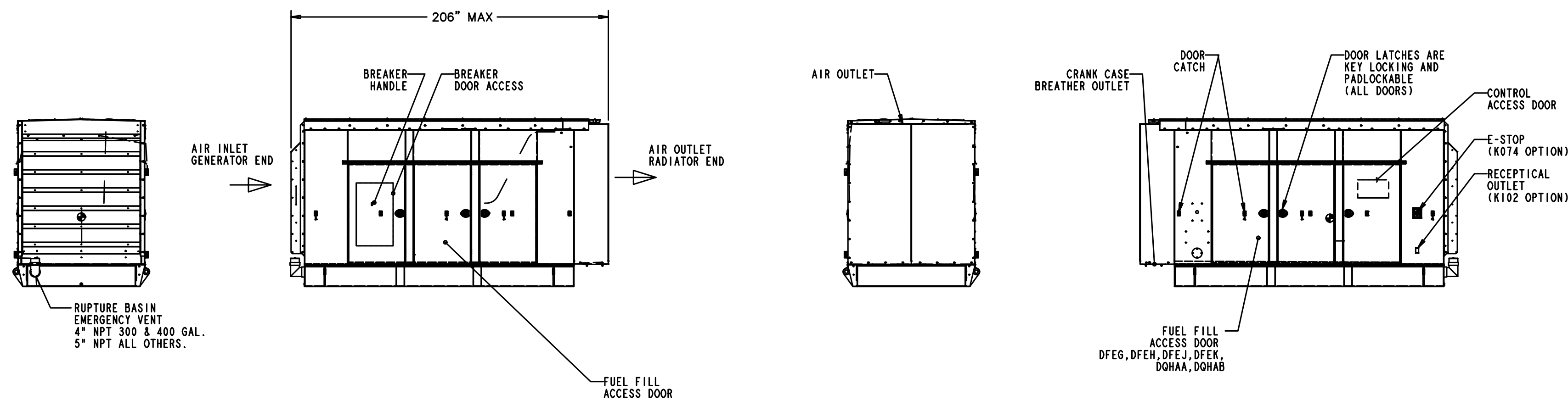
- CAST-IN-PLACE CONCRETE:**
1. CONCRETE WORK SHALL CONFORM TO ACI 318-05 AND CRSI STANDARDS.
  2. DESIGN OF CONCRETE ELEMENTS INCLUDING FOOTINGS AND SLABS IS IN ACCORDANCE WITH ACI 318-05 (BUILDING CODE REQUIREMENTS FOR STRUCTURAL CONCRETE).
  3. CONCRETE SHALL HAVE THE FOLLOWING MINIMUM SPECIFIED 14-DAY COMPRESSIVE STRENGTH - 4,000 PSI.
  5. DEFECTIVE AREAS IN CONCRETE INCLUDING, BUT NOT LIMITED TO, HONEY-COMBING, SPALLS, AND CRACKS WITH WIDTHS EXCEEDING 0.01 INCH SHALL BE REPAIRED. EXTENT OF DEFECTIVE AREA TO BE DETERMINED BY THE STRUCTURAL ENGINEER.
  6. CONCRETE MIX DESIGN FOR 4000 PSI CONCRETE SHALL BE BASED ON A MAXIMUM AGGREGATE SIZE OF 1 INCH, MAXIMUM WATER/CEMENT RATIO OF .58 FOR NON-AIR-ENTRAINED CONCRETE AND .46 FOR AIR-ENTRAINED CONCRETE AND A MAXIMUM SLUMP OF 4 INCHES. AIR-ENTRAINED CONCRETE SHALL BE USED FOR EXTERIOR EXPOSED CONCRETE WITH AN AIR CONTENT BETWEEN 5.5 AND 7.5 PERCENT.
  7. ALL CONCRETE MEMBERS SHALL NOT BE LOADED UNTIL THE SPECIFIED CONCRETE STRENGTH HAS BEEN ATTAINED.
  8. CONCRETE SHALL BE TESTED IN ACCORDANCE WITH ACI 301 AND THE SPECIFICATIONS FOR COMPLIANCE WITH THE CONTRACT DOCUMENTS. AT A MINIMUM CONCRETE SPECIMENS SHALL BE TAKEN FOR EVERY 100 YARDS OR PORTION THEREOF FOR EACH MIX DESIGN PLACED IN A DAY. ALL CONCRETE TEST REPORTS SHALL BE AVAILABLE ON SITE FOR INSPECTION.
  9. ALL EXPOSED CORNERS OF CONCRETE SHALL HAVE A 0.5" CHAMFER OR RADIUS.
  10. CONCRETE SHALL RECEIVE THE FOLLOWING FINISHES:
    - EXTERIOR SLABS: BROOM FINISH IN DIRECTION OF SLOPE
    - ALL OTHER CONCRETE: STEEL TROWEL FINISH
  11. MAINTAIN CONCRETE AFTER PLACEMENT WITH MINIMAL MOISTURE LOSS AT RELATIVELY CONSTANT TEMPERATURE FOR THE PERIOD NECESSARY FOR HYDRATION OF CEMENT AND HARDENING OF CONCRETE (NOT LESS THAN 7 DAYS). COMPLY WITH THE REQUIREMENTS OF ACI 308-STANDARD PRACTICE FOR CURING CONCRETE; AMERICAN CONCRETE INSTITUTE. A COMBINATION CURING AND SEALING COMPOUND SHALL BE APPLIED AFTER THE CONCRETE HAS BEEN FINISHED OR THE FORMS REMOVED. COMPOUND SHALL MEET THE REQUIREMENTS OF ASTM C1315.
- REINFORCEMENT:**
1. REINFORCING STEEL SHALL CONFORM TO ASTM A615, GRADE 60, UNLESS NOTED OTHERWISE.
  2. SPLICES SHALL BE CLASS B IN ACCORDANCE WITH ACI 318-05, UNLESS NOTED OTHERWISE. REINFORCEMENT SHALL BE SPLICED ONLY AT LOCATIONS SHOWN OR NOTED IN THE STRUCTURAL DOCUMENTS, EXCEPT REINFORCEMENT MARKED "CONTINUOUS" CAN BE SPLICED WITH CLASS "B" LAP SPLICE AT LOCATIONS DETERMINED BY CONTRACTOR. SPLICES IN OTHER LOCATIONS SHALL BE APPROVED IN WRITING BY THE STRUCTURAL ENGINEER.
  3. ADHESIVE FOR REINFORCING DOWELS IN EXISTING CONCRETE SHALL BE EITHER THE EPCON SYSTEM CERAMIC 6 EPOXY ADHESIVE SUPPLIED BY ITW RAMSET/RED HEAD OR THE HIT HY 150 INJECTION ADHESIVE SUPPLIED BY HILTI FASTENING SYSTEMS, OR APPROVED EQUAL. MINIMUM EMBEDMENT LENGTH SHALL BE 12 BAR DIAMETERS, UNLESS NOTED OTHERWISE.
  4. ALL DOWELS AND TERMINATING BARS SHALL HAVE A STANDARD 90 DEGREE HOOK.



**KEY PLAN**  
SCALE: N.T.S

A	ADDED OWNER COMMENTS + REMOVED UPS + EXTERIOR ATS	MM	CM/MM	07/02/21
0	ISSUED FOR REVIEW	MM	CM/MM	06/28/21
REV. NO.	REVISION DESCRIPTION	APP'D.	DRN/CHKD	DATE
EXCEPT AS MAY BE OTHERWISE PROVIDED BY CONTRACT THESE DRAWINGS AND SPECIFICATIONS ARE THE PROPERTY OF JACKSON COUNTY GA AND ARE ISSUED IN STRICT CONFIDENCE. THEY SHALL NOT BE REPRODUCED, COPIED, OR USED WITHOUT WRITTEN PERMISSION BY JACKSON COUNTY GA.		NAME JACKSON COUNTY CORRECTIONAL INSTITUTION PROBATION DETENTION CENTER 265 I W DAVIS RD, JEFFERSON, GA 30549		
ENG Group, Inc. 3100 FIVE FORKS TRUCKUM RD, STE 601 LILBURN, GA 30047 TEL: (770) 575-3537 FAX: (866) 531-2419 EMAIL: mitchm@eng-group.com		TITLE <b>PARTIAL SITE &amp; FLOOR PLAN - POWER - NEW</b>		
DRAWN	CHECKED	APP'D.	SHEET	DRAWING NO.
CM	MM	MM		E-41
DATE	SCALE	END GROUP PROJECT NO.		REV.
07/02/21	AS NOTED	21103		0





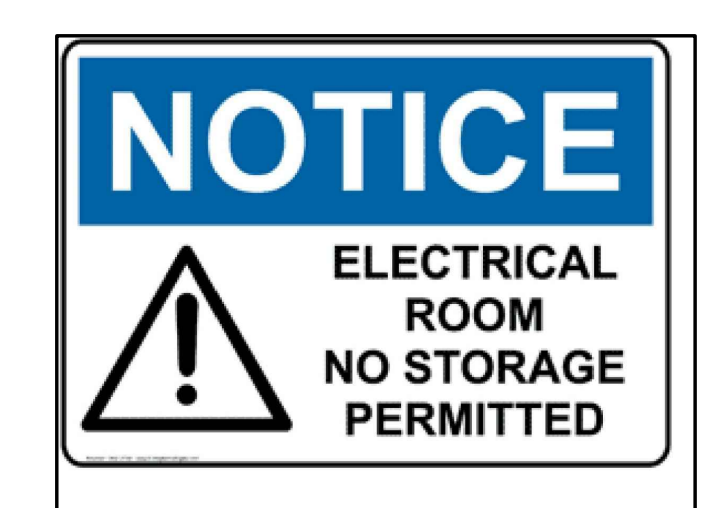
**1** **DETAIL - PROPOSED GENERATOR**  
E-5.1 SCALE: N.T.S. (24-HRS DIESEL RESERVE FUEL TANK)

3/16" HIGH WHITE LETTERS, BLACK COLOR LABEL TO MATCH EXISTING, (MIN. 3/4" x 1-1/2" SIZE) x 3/32" THICK

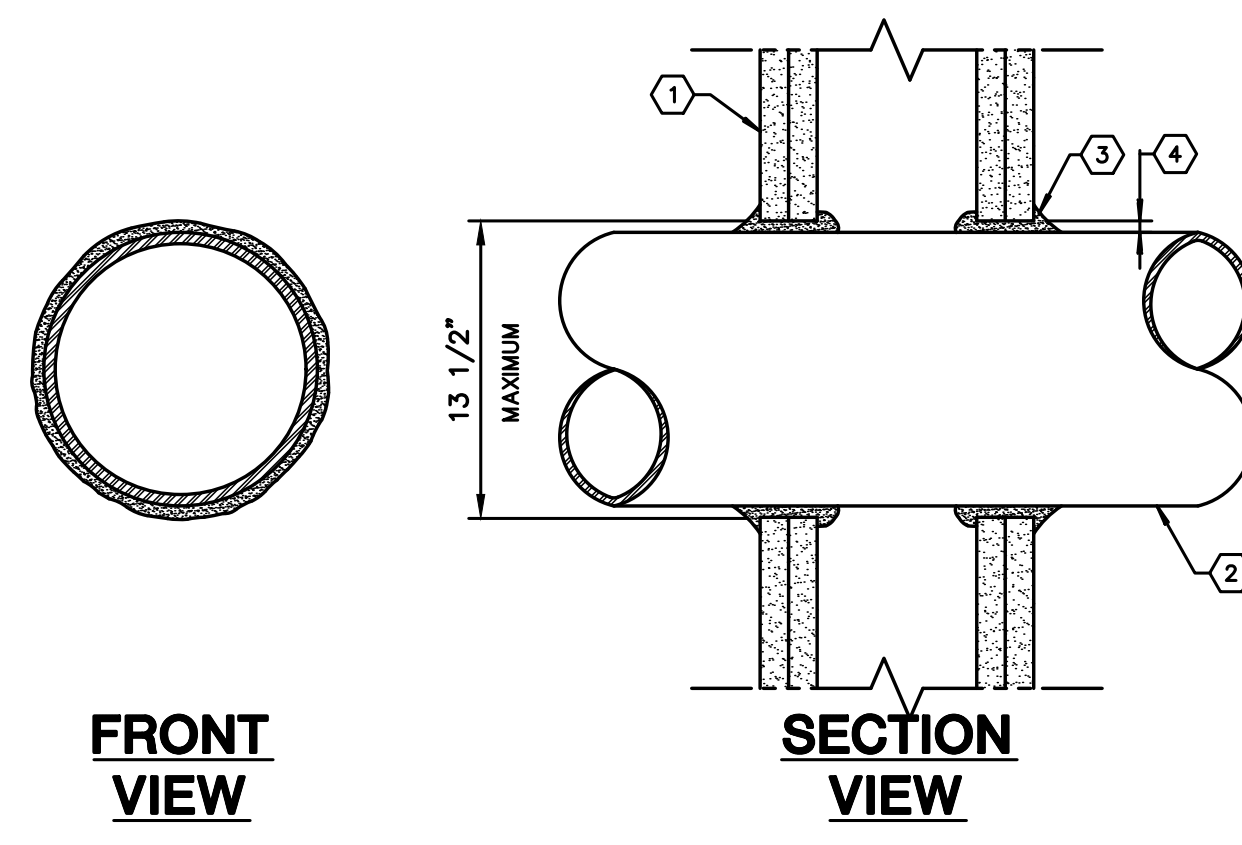
PNL "INV#1" FED FROM INV#1  
250A AMPS,  
120/208V-3Ø,4W

PROVIDE LABELS SIMILAR TO ABOVE FOR ALL DISTRIBUTION PANEL BOARDS, SWITCHBOARDS, EQUIPMENT DISCONNECTS, LIGHTING PANELS, ETC. MODIFY NAMES AS NEEDED PER ONE LINE DIAGRAM. (PROVIDE FOR ALL REVISED DISTRIBUTION SYSTEM PNLS + NEW PNLS)

**4** **DETAIL - EQUIPMENT LABELING**  
E-5.1 SCALE: N.T.S.



**2** **DETAIL - OSHA 14"x10" ELECTRICAL ROOM SIGNS**  
E-5.1 SCALE: N.T.S.

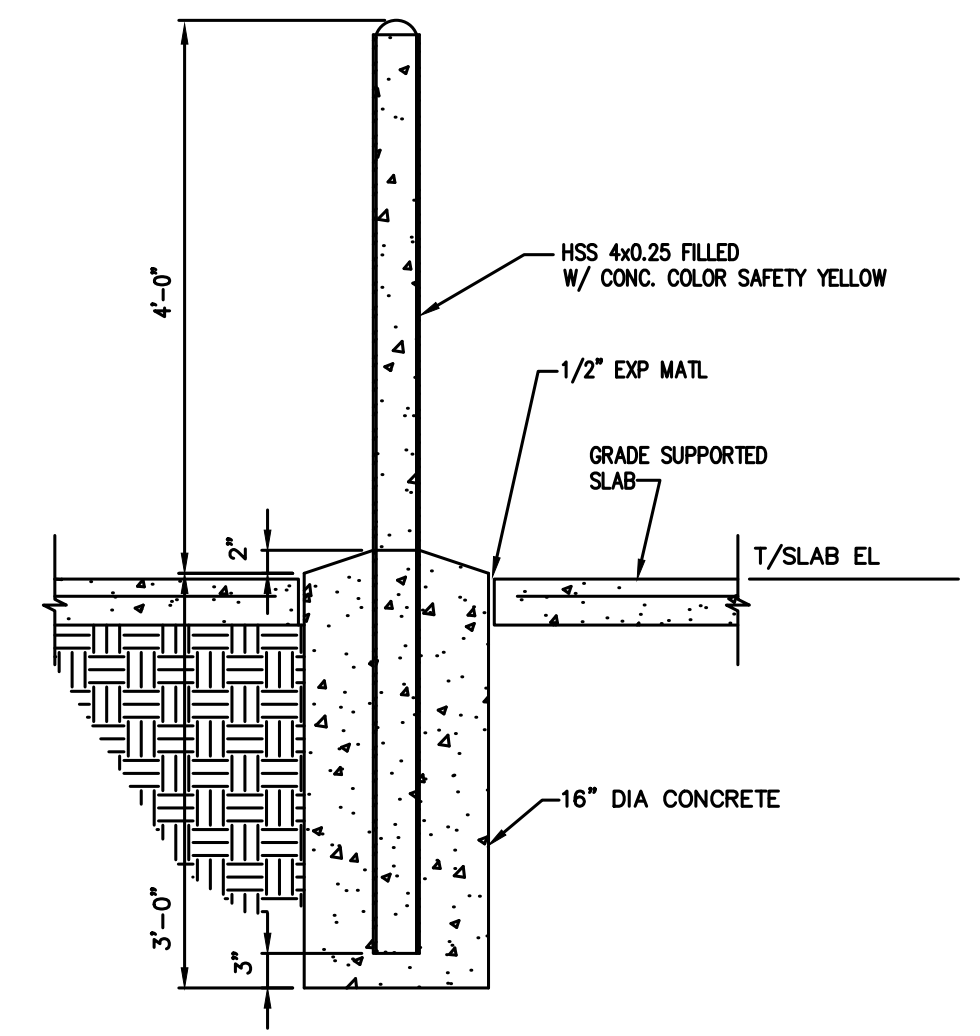


**NOTES:** (THIS DETAIL ONLY)

- 1 2 x 4 STEEL STUD WALLS WITH MINIMUM 1/3" THICK GYPSUM WALLBOARD; WALLBOARD TYPE, THICKNESS, NUMBER OF LAYERS, FASTER TYPE AND SHEET ORIENTATION SHALL BE AS SPECIFIED IN THE INDIVIDUAL V300 OR V400 SERIES DESIGN.
- 2 PENETRATING ITEM(S):  
 \*NOMINAL 12" DIAMETER (OR SMALLER) SCHEDULE TEN (OR HEAVIER) STEEL PIPE.  
 \*NOMINAL 12" DIAMETER (OR SMALLER) SERVICE WITH EIGHT (OR HEAVIER) CAST IRON SOIL PIPE.  
 \*NOMINAL 12" DIAMETER (OR SMALLER) CLASS FIFTY (OR HEAVIER) DUCTILE IRON PRESSURE PIPE.  
 \*NOMINAL 6" DIAMETER (OR SMALLER) STEEL CONDUIT.  
 \*NOMINAL 4" DIAMETER (OR SMALLER) EMT.  
 \*NOMINAL 6" DIAMETER (OR SMALLER) TYPE "L" OR (OR HEAVIER) COPPER TUBING.  
 \*NOMINAL 1" DIAMETER (OR SMALLER) FLEXIBLE STEEL CONDUIT.
- 3 CAULK INSTALLED TO COMPLETELY FILL ANNULAR SPACE BETWEEN PIPE OR CONDUIT AND GYPSUM WITH A MINIMUM OF 1/4" DIAMETER BEAD OF CAULK APPLIED TO PERIMETER OF PIPE OR CONDUIT.
- 4 ANNULAR SPACE AND FIRE RATING:

MAX. PIPE DIA.	ANNULAR SPACE	F-RATING (HR)	T-RATING (HR)
1"	0 TO 3/16"	1 OR 2	0+, 1 OR 2
1"	1/4" TO 1/2"	3 OR 4	3 OR 4
4"	0 TO 1/4"	1 OR 2	0
4"	0 TO 1 1/2"	1 OR 2	0
6"	1/4" TO 1/2"	3 OR 4	0
12"	3/16" TO 3/8"	1 OR 2	0

**3** **PENETRATION DETAIL - UL# W-L-1001**  
E-5.1 SCALE: N.T.S. 1-4 HOUR FIRE RATING



**5** **DETAIL - TYPICAL BOLLARD**  
E-5.1 SCALE: N.T.S.

REV. NO.	REVISION DESCRIPTION	APP'D.	CHKD.	DATE
A	ADDED OWNER COMMENTS + REMOVED UPS + EXTERIOR ATS	MM	CM/MM	07/02/21
0	ISSUED FOR REVIEW	MM	CM/MM	06/28/21

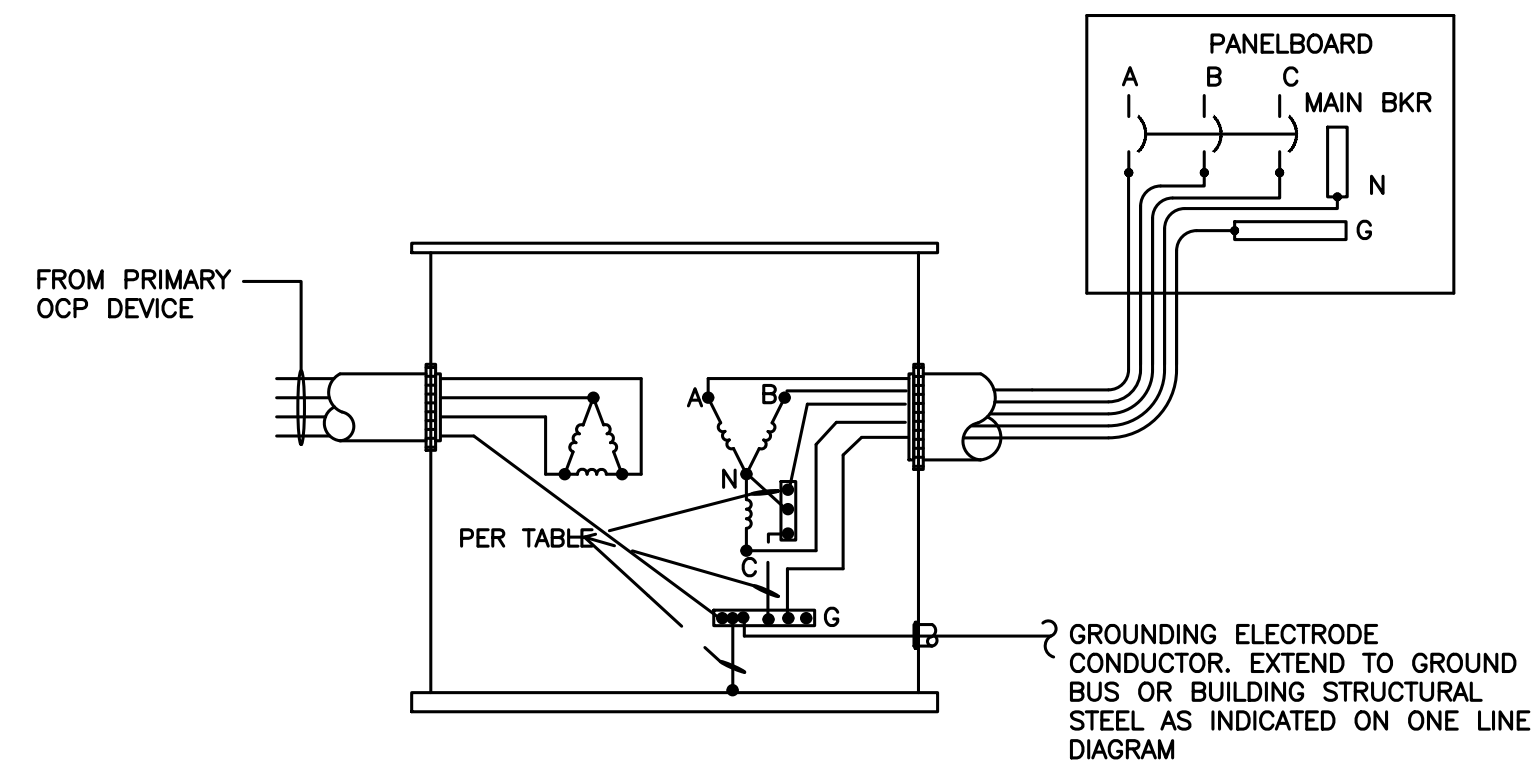
EXCEPT AS MAY BE OTHERWISE PROVIDED BY CONTRACT THESE DRAWINGS AND SPECIFICATIONS ARE THE PROPERTY OF JACKSON COUNTY GA AND ARE ISSUED IN STRICT CONFIDENCE. THEY SHALL NOT BE REPRODUCED, COPIED, OR USED WITHOUT WRITTEN PERMISSION BY JACKSON COUNTY GA.

JACKSON COUNTY CORRECTIONAL INSTITUTION  
PROBATION DETENTION CENTER  
265 I W DAVIS RD,  
JEFFERSON, GA 30549

**ENG Group, Inc.**  
3100 FIVE FORKS TRICKUM RD, STE 601  
LILBURN, GA 30047  
TEL (770) 575-3537 FAX (866) 531-2419  
EMAIL: mitchm@eng-group.com

DRAWN	CHECKED	APP'D.	SHEET	DRAWING NO.	REV.
CM	MM	MM		E-61	0
DATE	SCALE	END GROUP PROJECT NO.			
07/02/21	AS NOTED	21103			





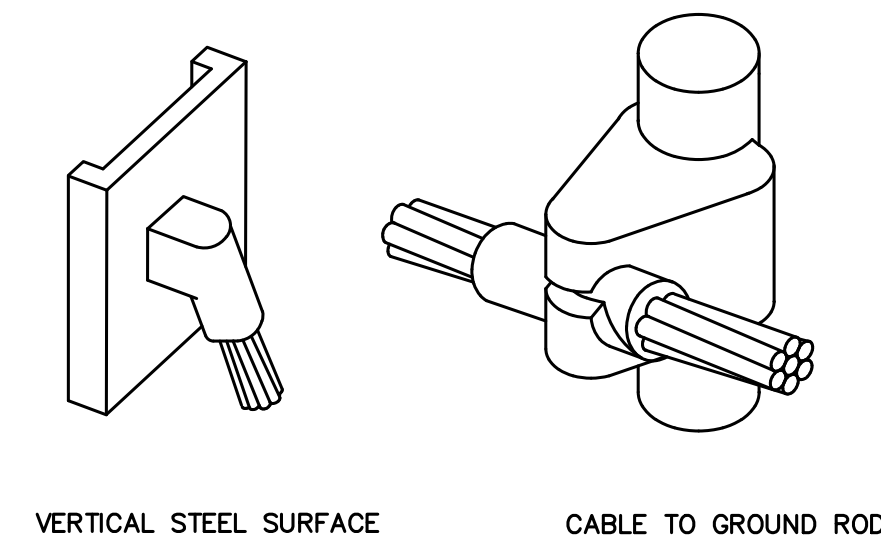
kVA	CONDUCTOR	CONDUIT SIZE-PVC
9	1#8	3/4" C
15	1#8	3/4" C
30	1#8	3/4" C
45	1#6	3/4" C
75	1#2	3/4" C
112.5	1#1/0	3/4" C
150	1#1/0	3/4" C
225	1#2/0	1" C
300	1#2/0	1" C
500	1#3/0	1" C

GROUNDING ELECTRODE CONDUCTOR SCHEDULE PER NEC TABLE 250-66

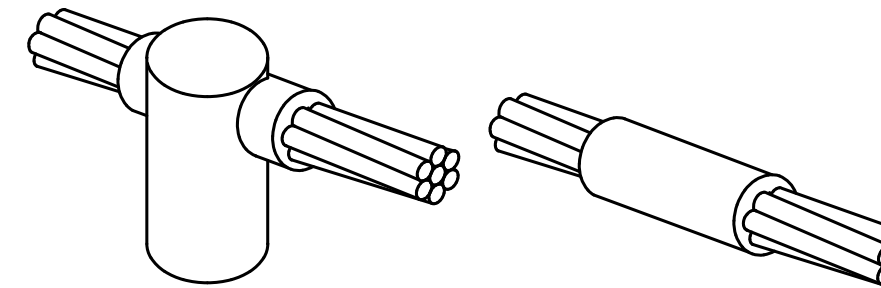
NOTES:

1. DETAIL TYPICAL FOR 3-PHASE TRANSFORMERS WITH 480 VOLT PRIMARY AND 208/120 SECONDARY VOLTAGES.
2. BONDING JUMPER AND GROUNDING ELECTRODE CONDUCTOR SHALL BE SIZED PER NEC 250-66.
3. BONDING JUMPER AND REQUIRED GROUNDING ELECTRODE CONDUCTOR SHALL BE SAME SIZE.

**1** DETAIL - TRANSFORMER GROUNDING  
E-5.2 SCALE: N.T.S

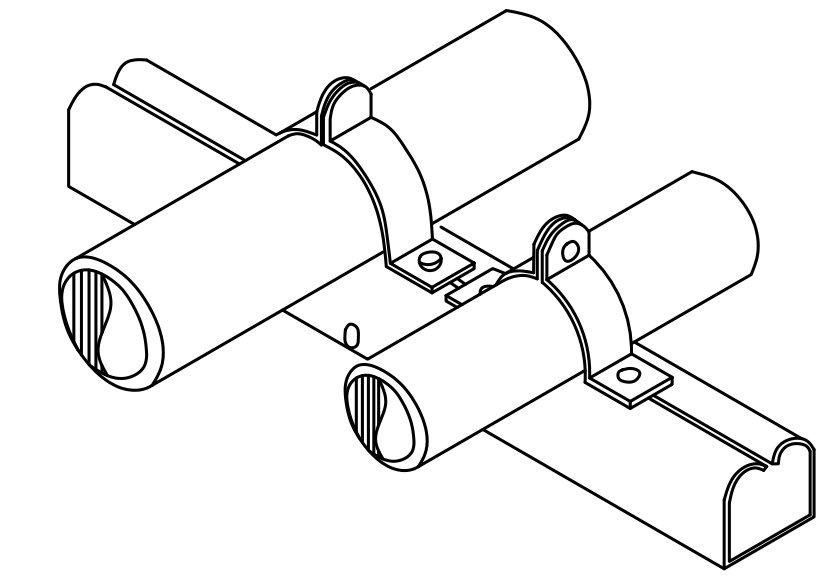


VERTICAL STEEL SURFACE CABLE TO GROUND ROD



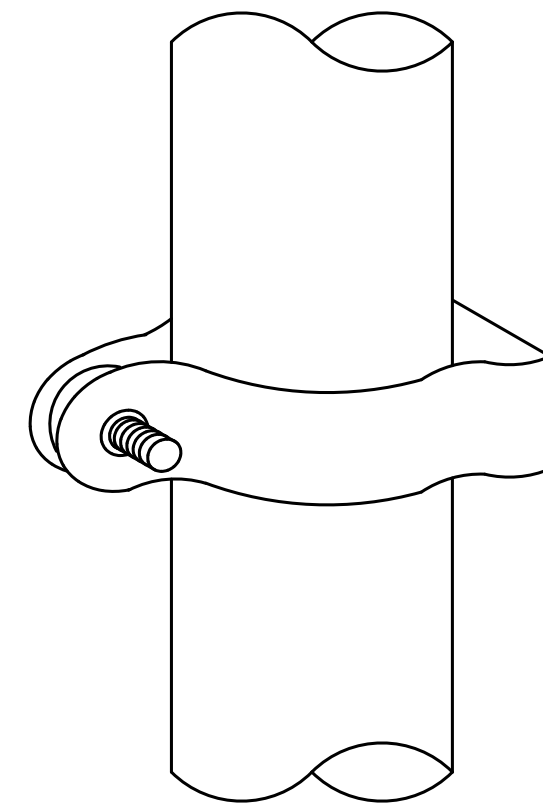
CABLE TO GROUND ROD HORIZONTAL SPLICE

**3** DETAILS - CADWELD  
E-5.2 SCALE: N.T.S



**5** DETAIL - CONDUIT SUPPORT WALL OR FLOOR  
E-5.2 SCALE: N.T.S

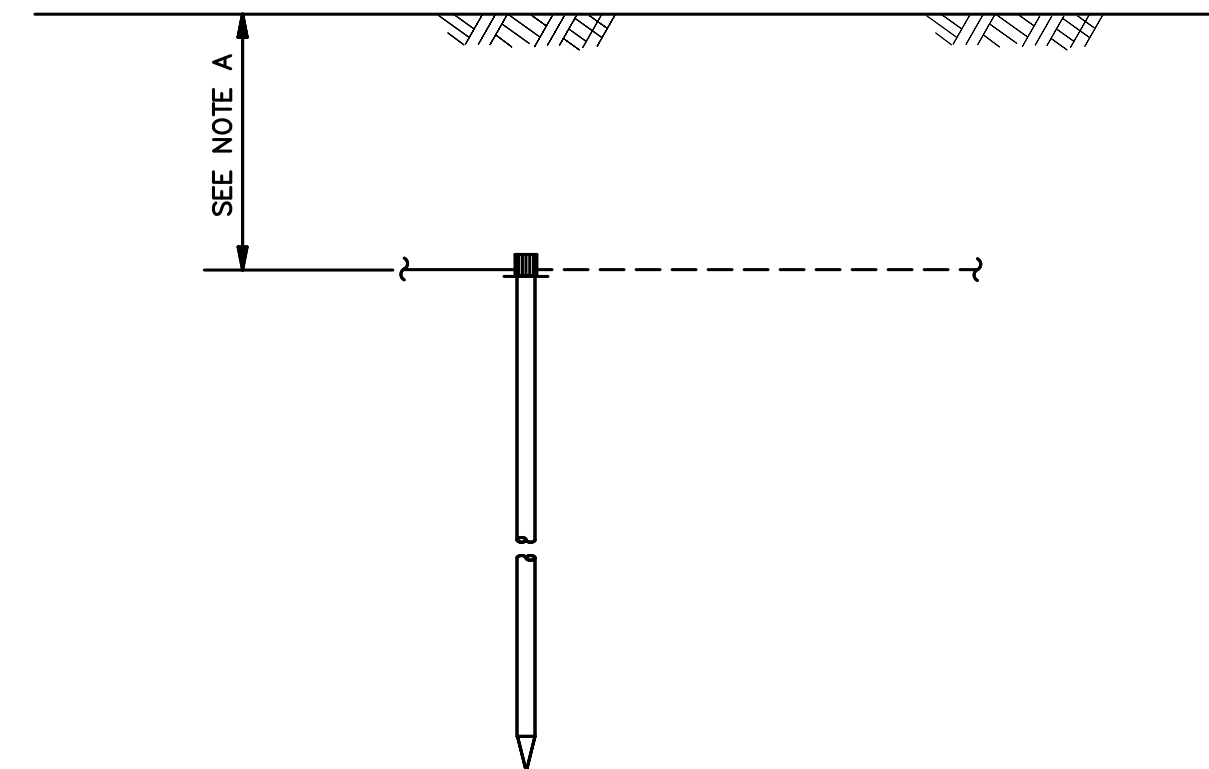
HOT-DIP GALVANIZED FASTENERS, CLAMPS AND UNISTRUT SHALL BE USED FOR EXTERIOR ITEMS (ALL TRADES).



NOTES:

- A. THIS DETAIL APPLIES FOR ALL CONDITIONS WHERE GROUNDING CONDUCTOR IS ROUTED EXPOSED, IE NOT UNDERGROUND OR SUPPORTED BY CABLE LADDER.
- B. NO CONTINUOUS METAL ENCASEMENTS ARE ALLOWED AROUND GROUNDING CONDUCTORS OR CONDUITS.
- C. PAINT PVC CONDUIT TO MATCH WALL COLOR ON VERTICAL RUNS.

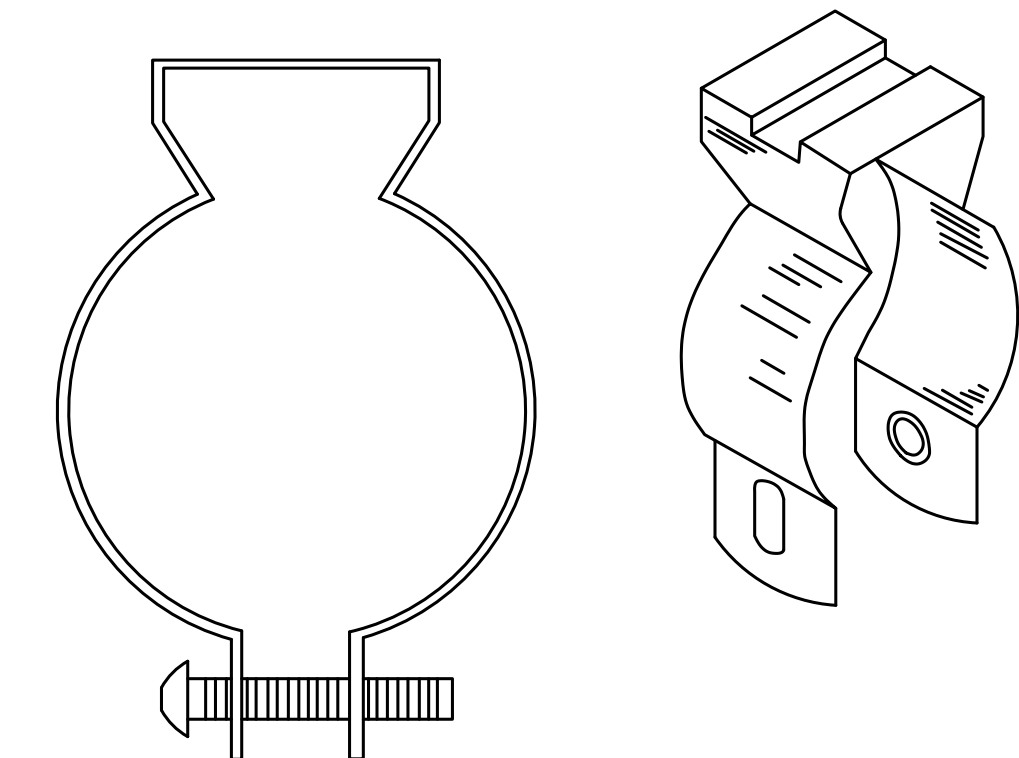
**2** GROUNDING CONDUCTOR WALL MOUNTING DETAIL  
E-5.2 SCALE: N.T.S



NOTE:

- A. GROUND LINE TO BE A MIN. OF 30" OR BELOW FROST LINE, WHICHEVER IS DEEPER.
- B. GROUND ROD SHALL BE DRIVEN VERTICALLY, NOT TO EXCEED 45 DEGREES FROM THE VERTICAL.
- C. THE MINIMUM INSIDE BEND RADIUS IS:  
 - 6 INCHES FOR CONDUCTORS UP TO #6 GAUGE.  
 - 12 INCHES FOR CONDUCTORS #6 TO #4/0 GAUGE.  
 - 24 INCHES FOR CONDUCTORS #4/0 GAUGE AND UP.

**4** GROUNDING ROD DETAIL  
E-5.2 SCALE: N.T.S



**6** DETAIL - CONDUIT HANGER  
E-5.2 SCALE: N.T.S

REV. NO.	REVISION DESCRIPTION	APP'D.	DRN/CHKD	DATE
A	ADDED OWNER COMMENTS + REMOVED UPS + EXTERIOR ATS	MM	CM/MM	07/02/21
0	ISSUED FOR REVIEW	MM	CM/MM	06/28/21

EXCEPT AS MAY BE OTHERWISE PROVIDED BY CONTRACT THESE DRAWINGS AND SPECIFICATIONS ARE THE PROPERTY OF JACKSON COUNTY GA AND ARE ISSUED IN STRICT CONFIDENCE. THEY SHALL NOT BE REPRODUCED, COPIED, OR USED WITHOUT WRITTEN PERMISSION BY JACKSON COUNTY GA.

NAME JACKSON COUNTY CORRECTIONAL INSTITUTION  
PROBATION DETENTION CENTER  
265 I W DAVIS RD,  
JEFFERSON, GA 30549

TITLE **DETAILS**

3100 FIVE FORKS TRICKUM RD, STE 601  
LILBURN, GA 30047  
TEL (770) 575-3537 FAX (866) 531-2419  
EMAIL: mitchm@eng-group.com

DRWN	CHKD	APP'D.	SHEET	DRAWING NO.	REV.
CM	MM	MM		E-5.2	0
DATE	SCALE	ENG GROUP PROJECT NO.			
07/02/21	AS NOTED	21103			

# SPECIFICATION:

## A. GENERAL PROVISIONS

1. WORK INCLUDED
  - 1.1 PROVIDE ALL LABOR, TOOLS, AND MATERIAL REQUIRED FOR A COMPLETE AND FULLY OPERATIONAL STATION, AS DESCRIBED ON THE DRAWINGS.
  - 1.2 THE WORK SHALL BE INSTALLED IN A NEAT AND WORKMANLIKE MANNER.
2. COMPLY WITH THE FOLLOWING:
  - 2.1 LOCAL CODES ENFORCED BY THE LOCAL INSPECTION AUTHORITY.
  - 2.2 THE EDITION OF THE NATIONAL ELECTRICAL CODE BEING ENFORCED FOR THIS PROJECT BY THE LOCAL INSPECTION AUTHORITY.
  - 2.3 ALL APPLICABLE LAWS AND ORDINANCES.
  - 2.4 THE RULES, REGULATIONS AND INSTALLATION REQUIREMENTS OF THE ELECTRIC UTILITY COMPANY SERVING THE PROJECT.
  - 2.5 LATEST JACKSON COUNTY STANDARDS.
3. MATERIALS:
  - 3.1 ALL MATERIAL SHALL BE NEW, AND SHALL COMPLY WITH THE INDICATED STANDARDS.
  - 3.2 ALL MATERIAL SHALL BE U/L LABELED OR U/L LISTED, EXCEPT WHERE THE MATERIAL IS OF A TYPE NOT INCLUDED IN THE U/L LISTING SERVICE, IN WHICH CASE THE MATERIAL SHALL COMPLY WITH OTHER APPLICABLE INDUSTRY STANDARDS AND THE CONTRACTOR SHALL PROVIDE ANY EXAMINATIONS OR CERTIFICATIONS REQUIRED BY THE LOCAL INSPECTION AUTHORITY IN LIEU OF U/L LISTING.
  - 3.3 ALL MATERIAL SHALL BE OF A SUITABLE TYPE AND RATING FOR THE INTENDED USE, AND SHALL BE INSTALLED IN CONFORMANCE WITH THE INSTRUCTIONS AND RECOMMENDATIONS OF THE MANUFACTURER.
4. DRAWINGS:
  - 4.1 THE DRAWINGS ARE SCHEMATIC IN NATURE AND DO NOT SHOW ALL OF THE REQUIRED DETAILS OF THE WORK. ALL MATERIALS CUSTOMARILY CONSIDERED TO BE A PART OF THE ELECTRICAL WORK AND REQUIRED FOR A COMPLETE AND OPERATIONAL INSTALLATION SHALL BE PROVIDED WITHOUT ADDITIONAL COST TO THE OWNER.
  - 4.2 AS-BUILT DRAWINGS SHALL BE MAINTAINED AT THE JOBSITE, AND SHALL BE AVAILABLE FOR REVIEW DURING CONSTRUCTION.
5. EXISTING CONDITIONS:
  - 5.1 THE EXISTING ELECTRICAL INSTALLATION SHALL REMAIN AS-INSTALLED AND IN OPERATION EXCEPT WHERE OTHERWISE REQUIRED BY INSTALLATION OF NEW WORK. GIVE WRITTEN NOTICE OF ANY UNFORESEEN EXISTING CONDITIONS, WHICH MAY AFFECT THE WORK. WORK INVOLVING EXISTING SYSTEMS OR EXISTING SPACES SHALL BE ACCOMPLISHED WITH THE MINIMUM INCONVENIENCE TO THE OWNER, AND SHALL BE DONE IN A MANNER AND TIME APPROVED BY THE OWNER. NO INTERRUPTIONS SHALL BE ALLOWED FOR THIS PROJECT. SUBMIT A DETAILED METHOD OF PROCEDURE (MOP) TO BE FOLLOWED IN ACCOMPLISHING THE WORK FOR APPROVAL BY OWNER.

## B. BASIC MATERIALS AND METHODS

1. NAMEPLATES:
  - 1.1 NAMEPLATES SHALL BE "LAMICORE" PLASTIC WITH ENGRAVED 0.25" HIGH LETTERS.
  - 1.2 NAMEPLATE COLORS: WHITE WITH BLACK LETTERS. PROVIDE NAMEPLATE FOR ALL NEW EQUIPMENT INDICATING DESIGNATION, VOLTAGE +FED FROM "XXX".
2. FIREPROOFING:
  - 2.1 ALL FIREPROOFING MATERIALS SHALL BE THE PRODUCT OF ONE MANUFACTURER AND SHALL BE U/L LISTED FOR THE TYPE OF APPLICATION WHERE APPLIED.
  - 2.2 PROVIDE CAULK, EXPANDING FOAM, PUTTY, RIGID BOARDS, TAPE AND PACKING AS REQUIRED BY THE LISTING FOR THE TYPE OF PENETRATION BEING FIREPROOFED.
  - 2.3 FIREPROOFING OF SLEEVES, TROUGHS, AND NIPPLES TO BE USED FOR LOW VOLTAGE CABLES AND SHALL BE INDEFINITELY NON-HARDENING AND REMOVABLE WITH COMMON HAND TOOLS.
  - 2.4 FIREPROOFING FOR PENETRATIONS OF FLOOR SLABS SHALL ALSO BE WATERPROOF FOR STANDING WATER IN A NON-FIRE CONDITION.
  - 2.5 ACCEPTABLE MANUFACTURERS:
    - A. DOW CORNING
    - B. NELSON
    - C. 3-M
    - D. SPEC-SEAL
  - 2.6 ALL PENETRATIONS OF FIRE RATED WALLS, SLABS, PARTITIONS, AND CEILINGS SHALL BE FIREPROOFED WITH A LISTED SYSTEM THAT WILL MAINTAIN THE ORIGINAL FIRE RATING OF THE PENETRATED STRUCTURE.
  - 2.7 INITIAL FIREPROOFING OF SLEEVES, CABLE TRAYS, AND WIREWAYS FOR LOW VOLTAGE CABLE SHALL NOT BE INSTALLED UNTIL CABLES ARE INSTALLED OR UNTIL REQUIRED FOR ISSUANCE OF CERTIFICATION OF FINAL INSPECTION, WHICH EVER IS EARLIER.
3. SUPPORTS:
  - 3.1 ALL WORK SHALL BE SUPPORTED FROM THE STRUCTURAL ELEMENTS OF THE BUILDING.
  - 3.2 SIZE AND SPACING OF SUPPORTS SHALL BE DETERMINED BY THE LOAD TO BE SUPPORTED SUCH THAT THE WORKING LOAD OF SUPPORTS WILL NOT EXCEED A SAFETY FACTOR OF 4:1.
  - 3.3 PLASTIC ANCHORS ARE NOT ACCEPTABLE.
  - 3.4 WORK UNDER THIS DIVISION SHALL NOT BE SUPPORTED FROM PIPING, DUCTS, OR WORK OF OTHER TRADES, UNLESS SPECIFICALLY NOTED ON THE DRAWINGS OR WITH THE WRITTEN PERMISSION OF THE ARCHITECT.
4. EQUIPMENT CONNECTIONS:
  - 4.1 OVERHEAD FEEDERS TO FLOOR MOUNTED EQUIPMENT, THAT WHICH IS NOT LOCATED ADJACENT TO A WALL OR COLUMN, SHALL BE PROVIDED WITH A RIGID CONDUIT STANDPIPE. THE STANDPIPE SHALL EXTEND FROM THE CEILING TO THE FLOOR AND BE ANCHORED TO THE FLOOR WITH A FLOOR FLANGE. PROVIDE THE APPROPRIATE CAST CONDUIT TEE FITTING IN THE STANDPIPE FOR CONNECTION OF THE EQUIPMENT.
- C. RACEWAY:
  1. ALL AC BRANCH CIRCUITS, FEEDERS, AND SPECIAL SYSTEMS CIRCUITS SHALL BE INSTALLED IN CONDUIT. PROVIDE COMPRESSION FITTINGS.
  2. UNLESS SPECIFICALLY NOTED ON THE DRAWINGS TO BE RUN EXPOSED, ALL RACEWAYS SHALL BE CONCEALED IN WALLS, FLOOR SLABS, OR CEILING PLENUMS.
  3. APPLY THREADED JOINT SEALING COMPOUND ON ALL GRC THREADED JOINT CONNECTIONS. RIGID ALUMINUM THREADED JOINTS SHALL BE COATED WITH NON-OXIDE COMPOUND.
  4. CRUSHED OR DEFORMED RACEWAYS SHALL NOT BE INSTALLED.
  5. UNLESS OTHERWISE REQUIRED, PROVIDE GRC OR IMC FOR THE FOLLOWING APPLICATIONS:
    - 5.1 WHERE SUBJECT TO DAMAGE
    - 5.2 EXPOSED ON EXTERIOR OF BUILDING
    - 5.3 EXTERIOR CIRCUITS UNDER ROADWAYS UNLESS PVC IN CONCRETE
    - 5.4 FEEDER OR SERVICE CONDUITS UNDER SLAB OR IN GRADE WHERE CONCRETE ENCASED PVC IS NOT USED.
  6. PROVIDE EMT IN DRY LOCATIONS ONLY FOR THE FOLLOWING APPLICATIONS:
    - 6.1 CONCEALED WORK IN SLABS, WALLS AND CEILING PLENUMS.
    - 6.2 BRANCH CIRCUIT AND FEEDER WIRING NOT OTHERWISE REQUIRED TO BE GRC OR IMC.
  7. PROVIDE PVC FOR THE FOLLOWING APPLICATIONS:
    - 7.1 SINGLE GROUND CONDUCTORS.
  8. FLEXIBLE CONDUIT FOR THE FOLLOWING APPLICATIONS:
    - 8.1 CONCEALED WORK ABOVE SUSPENDED CEILINGS FOR CONNECTIONS OF LIGHT FIXTURES, AND SIMILAR EQUIPMENT, LENGTH NOT TO EXCEED 6'-0".
    - 8.2 CONCEALED WORK IN EXISTING WALLS, EXTENDING MAXIMUM 3'-0" BEYOND CAVITY TO FIRST JUNCTION BOX.
- D. WIRE AND CABLE:
  1. CONDUCTORS:
    - 1.1 ALL FEEDER AND BRANCH CIRCUIT CONDUCTORS SHALL BE COPPER, SOLID OR STRANDED
    - 1.2 STRANDED WIRE SHALL NOT BE CONNECTED TO WIRING DEVICES NOT SUITABLE FOR STRANDED WIRE. USE CRIMP-ON TERMINALS.
    - 1.3 CONSTRUCTION:
      - A. NUMBER 10 AND NUMBER 12 - SOLID OR STRANDED.
      - B. NUMBER 8 AND LARGER - STRANDED UNLESS OTHERWISE DETAILED ON THE DRAWINGS.
      - C. NUMBER 14 AND SMALLER - STRANDED, FOR CONTROL CONDUCTORS ONLY.

## 2. INSULATION:

- 2.1 THWN / THHN
  - 2.2 SFF - FOR WIRING INSIDE OF FIXTURES
  - 2.3 XHHW
  - 2.4 SIS - FOR WIRING INSIDE SWITCHBOARD
3. VOLTAGE RATING: 600
4. COLOR CODING:
    - 4.1 UNLESS CONTRARY TO REQUIREMENTS OF LOCAL CODES, THE FOLLOWING COLOR CODE SHALL APPLY:
 

120/208 VOLTS:	480/277 VOLTS:
PHASE A - BLACK	PHASE A - BROWN
PHASE B - RED	PHASE B - ORANGE
PHASE C - BLUE	PHASE C - YELLOW
NEUTRAL - WHITE	NEUTRAL - GRAY
GROUND - GREEN	GROUND - GREEN
    - 4.2 WHERE LOCAL CODES REQUIRE OTHER THAN THESE COLOR CODES TO BE USED, COMPLY WITH LOCAL CODE REQUIREMENTS.
    - 4.3 COLOR CODE SHALL BE INDICATED BY:
      - A. #10, #12 - INSULATION COLOR.
      - B. #8 AND LARGER - COLORED TAPE APPLIED AT ALL TERMINATIONS, AND JUNCTION BOXES.

## E. PULL BOXES AND JUNCTION BOXES:

1. JUNCTION BOXES SHALL BE SHEET STEEL, MINIMUM 4" SQUARE, 1.5" DEEP, WITH SUITABLE PLASTER RING IN DRY WALL CONSTRUCTION. BOXES SHALL BE SECURELY ANCHORED IN PLACE, AND SHALL BE SUPPORTED INDEPENDENT OF THE RACEWAY SYSTEM.
2. IN DRY LOCATIONS, PULLBOXES SHALL BE GALVANIZED SHEET STEEL, MINIMUM 12 GAUGE, WITH MACHINE SCREW COVERS, AND WELDED CONSTRUCTION. WELDS SHALL BE COLD GALVANIZED.
3. IN DAMP LOCATIONS OR OUTDOORS, UNLESS OTHERWISE SHOWN ON THE DRAWINGS, BOXES IN STEEL RACEWAY RUNS SHALL BE GALVANIZED CAST IRON, WITH GASKETED COVERS AND CONDUIT HUBS OR DRILLED AND TAPPED. BOXES IN PVC RACEWAY RUNS SHALL BE PVC WITH GASKETED COVER. ALL BOXES SHALL BE RATED FOR THEIR APPLICATION, SUCH AS SIDEWALK OR LIGHT VEHICLE TRAFFIC.
4. PROVIDE INSULATED CABLE SUPPORT RACKS IN LARGE FEEDER PULL BOXES.
5. USING PERMANENT WATER PROOF WIDE BLACK MARKER, CLEARLY LABEL COVER OF ALL BRANCH CIRCUIT JUNCTION BOX COVERS WITH PANEL AND CIRCUIT NUMBER OF CIRCUITS CONTAINED IN OR PASSING THROUGH THE BOX.
6. PROVIDE NAMEPLATE ON EACH PULL BOX INDICATING FEEDER ORIGIN, DESIGNATION, FEEDER CONFIGURATION (E: 3-WIRE, 4-WIRE, GROUND), LOAD, AND VOLTAGE.

## F. SYSTEM CHARACTERISTICS:

1. THE EXISTING SERVICE VOLTAGE IS 480Y/277 VOLTS, 3-PHASE, 4-WIRE, WYE, WITH GROUNDED NEUTRAL.
2. ADDITIONAL VOLTAGE: 208Y/120 VOLTS, 3-PHASE, 4-WIRE, WYE, WITH GROUNDED NEUTRAL VIA DRY-TYPE POWER TRANSFORMERS.

## G. NEW OVERCURRENT DEVICES IN EXISTING EQUIPMENT:

1. PROVIDE NEW OVERCURRENT PROTECTIVE DEVICES IN EXISTING SWITCHBOARDS AND PANELBOARDS AS INDICATED.
2. PROVIDE ALL HARDWARE AND COMPONENTS REQUIRED FOR A COMPLETE INSTALLATION.
3. WHERE A DEVICE IS OBSOLETE AND THE MANUFACTURER DOES NOT OFFER AN EQUIVALENT REPLACEMENT DEVICE, PROVIDE WRITTEN NOTICE.
4. DEVICE VOLTAGE AND FAULT CURRENT INTERRUPTING RATINGS SHALL EQUAL OR EXCEED EXISTING EQUIPMENT RATINGS UNLESS NOTED OTHERWISE.
5. ALL EXISTING PANELBOARDS ALTERED UNDER THIS PROJECT SHALL BE PROVIDED WITH A REVISED TYPEWRITTEN DIRECTORY INDICATING THE LOCATION AND THE TYPE OF LOAD SERVED BY EACH BRANCH CIRCUIT.

## H. BUILDING GROUNDING SYSTEM:

1. RACEWAYS FOR SEPARATE GROUND CONDUCTORS: SCHEDULE 40 PVC CONDUIT.
2. CONDUCTORS: 98% CONDUCTIVITY COPPER, SOLID OR STRANDED AS INDICATED, SIZES AS INDICATED ON THE DRAWING.

## I. DISCONNECT SWITCH (SAFETY SWITCH)

1. MANUFACTURER: GE, SQUARE D
2. SHALL BE OF THE FUSIBLE, OR NON-FUSIBLE TYPE, AS INDICATED ON THE DRAWINGS.
3. SHALL BE HEAVY DUTY, QUICK-MAKE, QUICK-BREAK, HP RATED, HINGED COVER DUAL INTERLOCKED WITH SWITCH HANDLE AND WITH EXTERNAL INTERLOCK DEFEAT MECHANISM, WITH PROVISION FOR HANDLE AND DOOR PADLOCKING.
4. IN DRY LOCATIONS SHALL BE TYPE NEMA 1 ENCLOSED.
5. IN DAMP LOCATIONS, OR OUTDOORS, SHALL BE TYPE NEMA-3R, ENCLOSED, EXCEPT WHERE THE APPLIED USE REQUIRES AN ALTERNATE TYPE NEMA ENCLOSURE RATING.

## J. WIRING DEVICES:

1. THE COLOR OF ALL DEVICES FLUSH MOUNTED SHALL BE SELECTED BY THE ENGINEER.
2. SWITCHES, RECEPTACLES, FACE PLATES:
  - 2.1 STANDARD WALL TOGGLE SWITCHES FOR LIGHTING CIRCUITS SHALL BE 277 VOLT, 20 AMP, A.C. ONLY, HEAVY DUTY, QUIET TYPE, WITH GROUND BONDING SCREW. PROVIDE HUBBELL #1221 SERIES OR APPROVED EQUIVALENT
  - 2.2 DUPLEX RECEPTACLES SHALL BE 120 VOLT, 20 AMP, 3-WIRE GROUNDING, NYLON FACE, WITH SELF-GROUNDING ATTACHMENT, WITH GROUND BONDING SCREW. PROVIDE HUBBELL #5262 SERIES OR APPROVED EQUIVALENT.
  - 2.3 DUPLEX RECEPTACLES ON SEPARATE CIRCUITS SHALL BE SIMILAR, EXCEPT RATED 20 AMP.
  - 2.4 SPECIAL PURPOSE RECEPTACLES SHALL BE OF NEMA TYPE INDICATED WITH NYLON FACE WHERE AVAILABLE.
  - 2.5 G.F.C.I. TYPE RECEPTACLES SHALL BE RATED 20 AMP.
2. FLUSH MOUNTED DEVICE PLATES: BRUSHED STAINLESS STEEL.
3. LOCATIONS, UNLESS OTHERWISE REQUIRED BY LOCAL CODES (DIMENSIONS TO CENTER).
  - 3.1 SWITCHES: 48 INCHES ABOVE THE FINISHED FLOOR, 4 IN. FROM THE DOOR JAMB ON THE STRIKE SIDE OF THE DOOR.
  - 3.2 RECEPTACLES: 1 FT. 6 IN. ABOVE FINISHED FLOOR IN OFFICE SPACE UNLESS OTHERWISE NOTED ON THE DRAWINGS.
4. GROUNDING: PROVIDE NO. 12 GREEN INSULATED GROUND BONDING JUMPERS FOR ALL SWITCHES AND RECEPTACLES, BONDED TO BOX WITH A SEPARATE GROUNDING SCREW OR LUG.

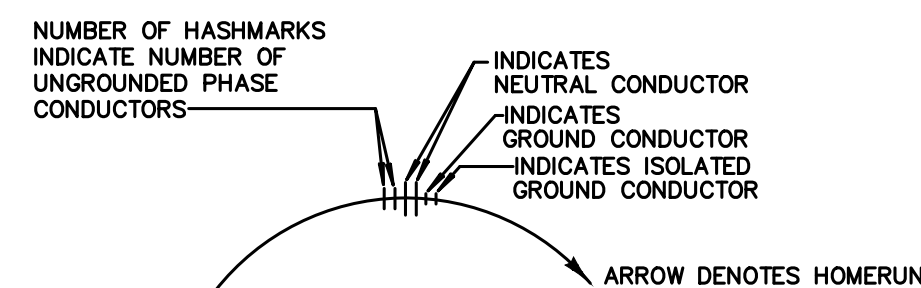
## K. PANELBOARDS

1. PANELBOARDS SHALL BE GE OR SQUARE D. MAIN LUG PANELS SHALL BE EITHER TOP OR BOTTOM FED AND SHALL NOT USE PLUG-ON LUG ASSEMBLIES FOR MAIN LUGS.
2. PANELBOARDS SHALL BE FACTORY ASSEMBLED WITH BOLT-ON BREAKERS. PROVIDE DOOR-IN-DOOR OPTION.
3. BUS SHALL BE PLATED COPPER.
4. CONSTRUCTION SHALL BE DEAD FRONT WITH SEPARATELY MOUNTED INTERIOR TRIM.
5. BRANCH BREAKERS SHALL BE ARRANGED AS SCHEDULED ON THE DWGS. SERIES RATED BKRS NOT ACCEPTABLE.
6. MULTI-POLE BREAKERS SHALL BE COMMON TRIP. TANDEM BREAKERS SHALL NOT BE FURNISHED.

7. ENCLOSURE SHALL BE GALVANIZED SHEET STEEL. END AND SIDE PANELS OF ENCLOSURE SHALL BE BLANK WITHOUT KNOCKOUTS.
8. ALL PANELS SHALL HAVE FINISHED DOOR COVER TRIM, HINGE MOUNTED TO ENCLOSURE BOX (HINGE MOUNTED-DEAD FRONT). COVER SHALL BE FACTORY PAINTED. PROVIDE DOOR-IN-DOOR CONSTRUCTION.
9. PROVIDE FLUSH LOCK AND CATCH. LOCK MECHANISM SHALL BE METAL CONSTRUCTION.
10. PROVIDE GROUND BUS BONDED TO ENCLOSURE.
11. WHERE A PANELBOARD IS SHOWN TO BE FED BY MORE THAN ONE CONDUCTOR PER PHASE, AN INDIVIDUAL LUG SHALL BE PROVIDED FOR EACH CONDUCTOR.
12. PROVIDE CIRCUIT BREAKER MOUNTING HARDWARE WHERE A 'SPACE' IS SCHEDULED.
13. POWER PANELS SHALL BE DESIGNED TO ALLOW INTERCHANGEABILITY OF BRANCH DEVICES AND SHALL ACCOMMODATE MIXING OF LARGE FRAME SIZE DEVICES.
14. PROVIDE LABEL TO INDICATE PANEL NAME, VOLTAGE & FED FROM "XX".

## L. DRY TYPE POWER TRANSFORMERS

1. MANUFACTURER: G.E., SQUARE D.
2. DRY-TYPE, METAL ENCLOSED, SELF-COOLED VENTILATED TYPE, DEAD FRONT, DRIP-PROOF, COPPER WINDINGS.
3. RATED FOR 115° C RISE, 220° C INSULATION SYSTEM, AND 40° C AMBIENT.
4. TWO-WINDING TYPE, THREE-PHASE, DELTA CONNECTED PRIMARY, GROUNDED WYE SECONDARY.
5. TRANSFORMER TAPS - THREE-PHASE, 30 KVA AND LARGER: (2) 2.5% ABOVE AND (4) 2.5% BELOW.
6. PROVIDE SEISMICALLY DESIGNED SUPPORTS AND BRACING WHERE REQUIRED BY SITE GEOGRAPHIC LOCATION AND WHERE INSTALLED ADJACENT TO ESSENTIAL EQUIPMENT THAT COULD BE DAMAGED BY POTENTIAL MOVEMENT DURING SEISMIC EVENTS.
7. CEILING-HUNG TRANSFORMERS SHALL BE SUSPENDED USING 5/8 INCH THREADED ROD, WITH A SUITABLE SIZE CHANNEL IRON FRAME BASE FOR SUPPORTING THE TRANSFORMER. SMALL WALL-MOUNTED TRANSFORMERS SHALL UTILIZE MANUFACTURERS WALL-MOUNT BRACKETS WHERE WALL IS SUITABLE FOR SUPPORTING WEIGHT OF UNIT.
8. PROVIDE A GROUNDING ELECTRODE CONDUCTOR (GEC) FROM THE NEUTRAL TERMINAL TO THE BUILDING MAIN GROUND BUS BAR, TO A MAIN STRUCTURAL STEEL COLUMN, TO A DOMESTIC POTABLE WATER METALLIC PIPE. SIZE PER NEC, OR AS INDICATED ON THE DRAWINGS, AND RUN IN TYPE RNC CONDUIT..
9. PROVIDE A SUPPLEMENTAL GROUNDING ELECTRODE CONDUCTOR (GEC) IN THE PRIMARY FEEDER TO THE TRANSFORMER SIZED PER NEC OR AS INDICATED ON THE DRAWINGS.
10. TRANSFORMER NEUTRAL: BOND TO THE ENCLOSURE AND FRAME USING A MANUFACTURED LENGTH OF FLEXIBLE COPPER WIRE BRAID WITH FACTORY LUGS, SIZED PER NEC, OR AS INDICATED ON THE DRAWINGS.



- NOTES:
- 1 NO HASHMARKS INDICATE (1) PHASE CONDUCTOR, (1) NEUTRAL CONDUCTOR, AND (1) GROUND CONDUCTOR IN 3/4" C. UNLESS OTHERWISE SCHEDULED
  - 2 ALL CONDUITS SHALL BE 3/4" C. MINIMUM SIZE.
  - 3 COMMON NEUTRAL CIRCUITS NOT PERMITTED.

## DETAIL - POWER WIRING SYMBOLS

SCALE: N.T.S.

# SYMBOLS

## POWER SYMBOLS

- WALL/CEILING MOUNTED JUNCTION BOX
- JUNCTION BOX MOUNTED UNDER RAISED FLOOR
- METER
- PULLBOX
- NEW SURFACE MOUNTED PANELBOARD
- NEW FLUSH MOUNTED PANELBOARD
- EXISTING SURFACE MOUNTED PANELBOARD
- EXISTING FLUSH MOUNTED PANELBOARD
- EQUIPMENT AS NOTED
- TRANSFORMER-TYPE AND CAPACITY AS NOTED
- BUSWAY RISER
- DISCONNECT SWITCH-TYPE AS NOTED. 30/3/F/WP INDICATES 30AMP, 3-POLE, F=FUSED/NF=NON-FUSED, WEATHERPROOF
- COMBINATION STARTER-TYPE AS NOTED.
- MOTOR STARTER-TYPE AS NOTED.
- MOTOR
- DUPLEX RECEPTACLE
- DUPLEX RECEPTACLE CEILING MOUNTED
- DOUBLE DUPLEX RECEPTACLE
- GROUND FAULT CIRCUIT INTERRUPTER DUPLEX RECEPTACLE

## WIRING SYMBOLS

- EXISTING RACEWAY TO REMAIN
- DENOTES EXISTING EQUIPMENT OR WIRING TO BE REMOVED
- DENOTES EXISTING EQUIPMENT OR WIRING TO BE REMOVED
- RACEWAY CONCEALED IN WALL OR ABOVE CEILING
- RACEWAY EXPOSED
- HEAVY LINE DENOTES NEW EQUIPMENT OR NEW WIRING
- LITE LINE DENOTES EXISTING EQUIPMENT OR EXISTING WIRING
- RACEWAY CONCEALED IN FLOOR SLAB, BELOW SLAB OR GRADE, OR UNDER RAISED ACCESS FLOOR

## GROUNDING SYMBOLS

- GROUND BUS-TYPE AS NOTED
- DRIVEN GROUND ROD
- EXPOSED GROUND CONDUCTOR
- EXTERIOR BURIED GROUND RING CONDUCTOR
- GROUND CONDUCTOR BELOW RAISED FLOOR
- CONDUCTOR TYPE AND SIZE AS NOTED
- BOND CONNECTION

## ABBREVIATIONS

- AFF ABOVE FINISH FLOOR
- AFG ABOVE FINISH GRADE
- AF AMPERES FRAME
- AT AMPERES TRIP
- ex EXISTING TO REMAIN
- exr EXISTING RELOCATED TO LOCATION ON PLAN
- WP DENOTES WEATHERPROOF DEVICE
- FACP FIRE ALARM CONTROL PANEL
- IG ISOLATED GROUND
- MSGB MASTER STATION GROUND BUS
- GFCI GROUND FAULT CIRCUIT INTERRUPTERS
- 42" INDICATES MOUNTING HEIGHT AFF IN INCHES TO CENTERLINE EXCEPT AS NOTED

## MISCELLANEOUS SYMBOLS

- PUSH BUTTON
- NOTE REFERENCE SYMBOL

A	ADDED OWNER COMMENTS + REMOVED UPS + EXTERIOR ATS	MM	CM/MM	07/02/21				
0	ISSUED FOR REVIEW	MM	CM/MM	06/28/21				
REV. NO.	REVISION DESCRIPTION	APP'D.	DRN/CSD	DATE				
EXCEPT AS MAY BE OTHERWISE PROVIDED BY CONTRACT THESE DRAWINGS AND SPECIFICATIONS ARE THE PROPERTY OF JACKSON COUNTY GA AND ARE ISSUED IN STRICT CONFIDENCE. THEY SHALL NOT BE REPRODUCED, COPIED, OR USED WITHOUT WRITTEN PERMISSION BY JACKSON COUNTY GA.		NAME JACKSON COUNTY CORRECTIONAL INSTITUTION PROBATION DETENTION CENTER 265 I W DAVIS RD, JEFFERSON, GA 30549						
ENG Group, Inc. 3100 FIVE FORKS TRUCKUM RD, STE 601 LILBURN, GA 30047 TEL (770) 573-3537 FAX (866) 531-2419 EMAIL: mitchm@eng-group.com		TITLE SPECIFICATION & SYMBOLS						
DRAWN	CM	CHECKED	MM	APP'D.	MM	SHEET	DRAWING NO.	REV.
DATE	07/02/21	SCALE	AS NOTED	END GROUP PROJECT NO.	21103		E-63	0



## GENERAL NOTES:

- ALL CONTRACTORS SHALL COMPLY WITH ALL REQUIREMENTS.
- ALL CONTRACTORS SHALL REVIEW OTHER TRADES DWGS FOR COORDINATION AND ADDITIONAL REQUIREMENTS:
- PROVIDE ALL LABOR, TOOLS, AND MATERIAL REQUIRED FOR A COMPLETE AND FULLY OPERATIONAL INSTALLATION, AS DESCRIBED ON THE DRAWINGS.
- THE WORK SHALL BE INSTALLED IN A NEAT AND WORKMANLIKE MANNER.
- COMPLY WITH LOCAL CODES ENFORCED BY THE LOCAL INSPECTION AUTHORITY.
- COMPLY WITH THE EDITION OF THE NATIONAL ELECTRICAL CODE BEING ENFORCED FOR THIS PROJECT BY THE LOCAL INSPECTION AUTHORITY.
- COMPLY WITH ALL APPLICABLE LAWS AND ORDINANCES.
- COMPLY WITH THE RULES, REGULATIONS AND INSTALLATION REQUIREMENTS OF THE ELECTRIC UTILITY COMPANY SERVING THE PROJECT.
- COMPLY WITH OWNER RULES AND REGULATIONS. COMPLY WITH LATEST OWNERS STANDARDS.
- ALL MATERIAL SHALL BE NEW, AND SHALL COMPLY WITH THE INDICATED STANDARDS.
- ALL MATERIAL SHALL BE U/L LABELED OR U/L LISTED, EXCEPT WHERE THE MATERIAL IS OF A TYPE NOT INCLUDED IN THE U/L LISTING SERVICE, IN WHICH CASE THE MATERIAL SHALL COMPLY WITH OTHER APPLICABLE INDUSTRY STANDARDS AND THE CONTRACTOR SHALL PROVIDE ANY EXAMINATIONS OR CERTIFICATIONS REQUIRED BY THE LOCAL INSPECTION AUTHORITY IN LIEU OF U/L LISTING.
- ALL MATERIAL SHALL BE OF A SUITABLE TYPE AND RATING FOR THE INTENDED USE, AND SHALL BE INSTALLED IN CONFORMANCE WITH THE INSTRUCTIONS AND RECOMMENDATIONS OF THE MANUFACTURER.
- THE DRAWINGS ARE SCHEMATIC IN NATURE AND DO NOT SHOW ALL OF THE REQUIRED DETAILS OF THE WORK. ALL MATERIALS CUSTOMARILY CONSIDERED TO BE A PART OF THE WORK AND REQUIRED FOR A COMPLETE AND OPERATIONAL INSTALLATION SHALL BE PROVIDED WITHOUT ADDITIONAL COST TO THE OWNER.
- EXISTING INSTALLATION SHALL REMAIN AS-INSTALLED AND IN OPERATION EXCEPT WHERE OTHERWISE REQUIRED BY INSTALLATION OF NEW WORK. GIVE WRITTEN NOTICE OF ANY UNFORESEEN EXISTING CONDITIONS, WHICH MAY AFFECT THE WORK. WORK INVOLVING EXISTING SYSTEMS OR EXISTING SPACES SHALL BE ACCOMPLISHED WITH THE MINIMUM INCONVENIENCE TO THE OWNER, AND SHALL BE DONE IN A MANNER AND TIME APPROVED BY THE OWNER. NO INTERRUPTIONS SHALL BE ALLOWED FOR THIS PROJECT.
- FIELD VERIFY ALL EQUIPMENT CONNECTIONS WITH EXISTING EQUIPMENT SCHEDULED TO BE RELOCATED FOR FINAL CONNECTION REQUIREMENTS. CONTRACTOR SHALL BE RESPONSIBLE FOR COORDINATION OF WORK WITH EXISTING AND NEW EQUIPMENT.
- DEVIATIONS FROM THE DRAWINGS REQUIRED TO COMPLY WITH THE LATEST CODES, LATEST LANDLORD AND OWNERS STANDARDS, TO CONFORM TO SPACE CONDITIONS AND TO PROVIDE THE REQUIRED OPERATION, SERVICE, OR MAINTENANCE ACCESSIBILITY SHALL BE MADE AT NO ADDITIONAL COST TO THE OWNER.
- REFER TO CUT SHEETS, AND OWNER'S FINAL EQUIPMENT ORDER INFORMATION FOR ROUGH-IN HEIGHTS AND DIMENSIONS.
- REFER TO DRAWINGS, CUT SHEETS, AND OWNER'S FINAL EQUIPMENT ORDER INFORMATION FOR FINAL CONNECTION REQUIREMENTS TO OWNERS EQUIPMENT. CONTRACTOR SHALL BE RESPONSIBLE FOR COORDINATION WITH FINAL EQUIPMENT.
- SITE SURVEY AND FIELD-ENCOUNTERED OBSTACLES. THE CONTRACTOR SHALL CONDUCT A THOROUGH SITE INSPECTION AND SHALL FIELD VERIFY CONDITIONS PRIOR TO BID SUBMITTAL. THE CONTRACTOR SHALL ASSURE THERE IS ADEQUATE ACCESS AND DELIVERY-PATH CLEARANCE FOR ALL REQUIRED EQUIPMENT, MATERIALS, PERSONNEL, AND TOOLS, AND SHALL NOTIFY THE OWNER AND ENGINEER OF ANY DISCREPANCIES. NEITHER THE ENGINEER NOR OWNER ARE GUARANTEEING THE ACCURACY OF THE INFORMATION DEPICTED IN THESE DOCUMENTS, AND THERE ARE NO IMPLIED WARRANTIES ASSOCIATED WITH THESE DOCUMENTS. THE CONTRACTOR SHALL ADVISE THE ENGINEER OF ANY DISCREPANCIES PRIOR TO THE BID. THE CONTRACTOR SHALL BE RESPONSIBLE FOR ANY REQUIRED ALTERATION RESULTING FROM FAILURE TO ADEQUATELY SURVEY FIELD CONDITIONS.
- SCALE OF DRAWINGS - MEASUREMENTS AND/OR LOCATIONS SHALL NOT BE SCALED FROM THE CONSTRUCTION DRAWINGS. CONTRACTOR SHALL FIELD VERIFY ALL DIMENSIONS.
- CONTRACTOR TO BE RESPONSIBLE FOR ALL PIPING, CONDUIT AND WIRING ROUTING. ROUTING SHALL BE APPROVED BY THE OWNER.
- ALL CKTS SHALL BE MEGGER TESTED. MEGGER TEST OF ALL FEEDERS SHALL BE ACCOMPLISHED BEFORE ENERGIZING CIRCUITS. TEST SHALL BE PHASE TO PHASE, PHASE TO NEUTRAL AND PHASE TO GROUND. SUBMIT A WRITTEN TABULATION OF THE RESULTS OF EACH TEST TO THE ENGINEER FOR REVIEW. REPLACE ANY CABLE INSTALLED WITH INSULATION RESISTANCE OF LESS THAN ACCEPTED PUBLISHED INDUSTRY STANDARDS. REPLACE CONDUCTORS WITHOUT ADDITIONAL COST TO THE OWNER WHERE DETERMINED NOT ACCEPTABLE BY MEGGER TESTING.
- INSTALLED WORK, SYSTEMS AND EQUIPMENT SHALL BE GUARANTEED FOR A MINIMUM OF ONE YEAR FOLLOWING OWNER ACCEPTANCE.
- CLEANING - REMOVE DEBRIS DAILY. LEAVE SPACE CLEAN AT THE END OF EACH WORKING DAY.
- OWNER FACILITY HAS NO INTERIOR SPACE FOR STORAGE OF LARGE EQUIPMENT DURING THE PERFORMANCE OF THIS PROJECT. IT IS THE CONTRACTOR'S RESPONSIBILITY TO PROTECT THE BLDGS WHEN MOVING EQUIPMENT IN AND OUT. THE CONTRACTOR WILL BE RESPONSIBLE FOR ANY REPAIRS OF ANY DAMAGE THAT RESULTS FROM THIS ACTION. IT WILL BE THE CONTRACTOR'S RESPONSIBILITY TO TRANSPORT THE NEW EQUIPMENT TO THE FACILITY AND TRANSPORT THE DEMO'D EQUIPMENT. DEMO EQUIPMENT SHALL BE DISCARDED.
- RESTORE TO ORIGINAL CONDITION OR REPLACE ANY WORK AND MATERIALS DAMAGED DURING THIS PROJECT.
- THIS IS A TRAFFIC CARRYING, REVENUE PRODUCING FACILITY, WHICH MUST REMAIN FULLY FUNCTIONAL THROUGHOUT THE DURATION OF THIS PROJECT. THEREFORE, EXTREME CARE MUST BE EXERCISED BY ALL WORKERS WHILE IN THE COMMUNICATIONS EQUIPMENT AREA & POWER ROOM, AND ALL EQUIPMENT MUST BE PROTECTED FROM DUST AND PHYSICAL DAMAGE AT ALL TIMES.
- PREPARE AND SUBMIT A DETAILED SCHEDULE AND DESCRIPTION OF THE PROCEDURE TO BE FOLLOWED IN ACCOMPLISHING THE WORK FOR PRIOR APPROVAL BY THE OWNER. SUBMIT THE PROPOSED SCHEDULE AT LEAST (10) BUSINESS DAYS PRIOR TO ACCOMPLISHING THE WORK.
- PROTECT BLDGS AND EQUIPMENT AGAINST DAMAGE. RECOMMEND TAKING PICTURES BEFORE/AFTER AND HAVING MEETING WITH OWNER TO INSPECT THE SPACE BEFORE/AFTER WORK. IF EQUIPMENT, BLDGS, WALLS ARE DAMAGED, SHALL BE FIXED AS REQUIRED BY PROJECT MANAGER AT NO ADDITIONAL COST TO OWNER.
- CONTRACTOR SHALL PROTECT WALLS, EQUIPMENT, BLDGS AND ALL OWNER BUSINESS OR BUILDING PROPERTY FROM DAMAGE. IF DAMAGE OCCURS DURING CONSTRUCTION, CONTRACTOR SHALL BE RESPONSIBLE FOR RESTORING PROPERTY TO THE PREVIOUS CONDITION AS DETERMINED BY OWNER AND/OR THE BUILDING MANAGEMENT AT NO ADDITIONAL COST (TYPICAL).
- CONTRACTOR SHALL PAY ALL PERMIT FEES, ALL REQUIRED SPECIAL INSPECTIONS FEES (ANY ADDITIONAL REQUIRED FEES), ANY NEGOTIATION WITH THE CITY AND SHALL APPLY FOR PERMIT.
- FOR EXTERIOR HOT-DIP GALVANIZED FASTENERS AND UNISTRUT SHALL BE USED.
- INSTALL ARC FLASH LABELS FOR ALL EXISTING ELECTRICAL EQUIPMENT PER ENG GROUP STUDY. PROVIDE FRAME FOR ENG GROUP PROVIDE ONE LINE DIAGRAM AND INSTALL ON WALL IN GENERATOR ROOM AND ADJACENT TO MAIN SWGR.
- PROVIDE SPILL KIT PER OWNER REQUIREMENTS - NEW PIG, 30 GALLON OVERPACK SALVAGE DRUM.
- PROVIDE LAMINATED ONE LINE DIAGRAM (PDF FURNISHED BY ENG GROUP, PRINTED, LAMINATED & INSTALLED BY CONTRACTOR ON WALL ADJACENT TO OR ON THE ATS SIDE PANEL).
- QUALITY - CONTRACTOR SHALL PERFORM ALL WORK AND INSTALL ALL COMPONENTS IN A PROFESSIONAL AND WORKMANLIKE MANNER. ALL FINISH WORK TO BE TRUE, LEVEL, AND PLUMB. ALL JOINTS TO BE TIGHT AND CLEAN.
- CONTRACTOR SHALL ASSUME RESPONSIBILITY FOR INCORPORATING IN THE WORK ANYTHING WHICH, THOUGH NOT MENTIONED IN THE DWGS, SPECIFICATIONS, OR DURING SITE SURVEYS THAT WOULD BE NECESSARY TO PERFORM TO WORK AND TO PROVIDE FULL FUNCTIONING SYSTEM.
- AS BUILT, RED LINE DRAWINGS - CONTRACTOR SHALL UPDATE "RED-LINE" CONSTRUCTION DOCUMENTS ON A DAILY BASIS. THE RED-LINE DOCUMENTS SHALL BE REVIEWED WEEKLY WITH OWNER REPRESENTATIVE. THE CONTRACTOR SHALL PROVIDE THE RED-LINE DOCUMENTS TO OWNER WITHIN SEVEN (7) DAYS FOLLOWING SUBSTANTIAL COMPLETION OF THE PROJECT. THE RED-LINE DOCUMENTS ARE THE PROPERTY OF OWNER AND SHALL NOT BE REMOVED FROM THE PROJECT SITE WITHOUT APPROVAL OF THE OWNER REPRESENTATIVE. THESE DOCUMENTS SHALL BE KEPT IN A SAFE LOCATION.
- WARRANTY - CONTRACTOR TO PROVIDE A ONE YEAR WARRANTY FOR ALL WORK, THE PERIOD TO BEGIN WITH FINAL ACCEPTANCE BY OWNER.

## DEMOLITION NOTES:

- THE DRAWINGS SHOW THE GENERAL EXTENT OF THE DEMOLITION REQUIRED. THE DRAWINGS DO NOT NECESSARILY SHOW EVERYTHING TO BE REMOVED IN PREPARATION FOR NEW CONSTRUCTION.
- CONTRACTOR TO VERIFY EXACT CONDITIONS AND EXTENT OF EXISTING CONSTRUCTION TO BE REMOVED DURING SITE INSPECTION.
- ALL DEMOLITION/CONSTRUCTION IS TO BE DONE IN AN ORDERLY MANNER.
- DURING THE PROCESS OF DEMOLITION, CONTRACTOR SHALL MAINTAIN ACCESS TO ALL EXITS AND RATED CORRIDORS AS REQUIRED BY CODE FOR EMERGENCY EXITING.
- ALL MEASURES NECESSARY TO ASSURE SAFE DEMOLITION OF THE AREAS INDICATED ARE THE SOLE RESPONSIBILITY OF THE CONTRACTOR.
- CONTRACTOR IS RESPONSIBLE FOR INFORMING THE OWNER OF ANY HAZARDOUS MATERIAL ENCOUNTERED DURING DEMOLITION AND/OR CONSTRUCTION.
- CONTRACTOR SHALL PROTECT THE EXISTING TO REMAIN OWNER'S PROPERTY.
- CONTRACTOR SHALL REPAIR ALL DAMAGE DUE TO DEMOLITION/CONSTRUCTION WORK.
- CONTRACTOR SHALL TAKE MEASURES TO PROTECT EXISTING FIXTURES/EQUIPMENT TO BE RELOCATED.
- COORDINATE WITH OTHER TRADES AS REQUIRED FOR THE DEMOLITION OF OTHER TRADES WORK. CUT OFF ALL IN FLOOR CONDUITS, GRIND SMOOTH WITH FLOOR AND PATCH. CONTRACTOR SHALL DENOTE ALL DEMOLISHED CIRCUITS ON EXISTING PANEL DIRECTORIES AND NOTE ALL SPARE BREAKERS.
- CONTRACTOR SHALL MAINTAIN THE INTEGRITY AND CONTINUITY OF ALL EXISTING FEEDERS AND BRANCH CIRCUITS FEEDING AREAS OF THE BUILDING THAT ARE NOT IN THIS SCOPE OF WORK AS DEFINED BY THE DRAWINGS.
- COORDINATE EXTENT OF DEMOLITION WORK WITH DRAWINGS PRIOR TO COMMENCING ANY DEMOLITION WORK.
- ALL WORK IN HOT PANELS SHALL TAKE PLACE DURING MAINTENANCE WINDOWS.
- CONTRACTOR SHALL FIELD VERIFY ALL EXISTING CONDITIONS. NOTIFY DESIGN TEAM OF ANY CONFLICTS WITH EXISTING UTILITIES, DIMENSIONS OR MISCELLANEOUS ITEMS.
- ALL ASSOCIATED WORK POTENTIALLY AFFECTING EXISTING TRAFFIC CARRYING REVENUE EQUIPMENT SHALL BE PERFORMED DURING AN OWNER APPROVED OPEN WINDOW, BETWEEN 12AM TO 6AM.
- PATCH, REPAIR OR REPLACE ANY FINISHES THAT BECOME DAMAGED OR AREA AFFECTED BY CONSTRUCTION ACTIVITIES. ALL FINISHES IN THE AREA OF WORK SHALL BE IN LIKE NEW CONDITION AT THE COMPLETION OF THE CONSTRUCTION WORK.
- ALL EXISTING BUILDING CODE EGRESS REQUIREMENTS, FIRE CODE REQUIREMENTS AND LIFE SAFETY REQUIREMENTS SHALL BE MAINTAINED AND REMAIN UNCHANGED DURING AND FOLLOWING CONSTRUCTION ACTIVITIES. NO CHANGE IN BUILDING CONSTRUCTION TYPE OR OCCUPANCY IS ANTICIPATED.
- COORDINATE ALL GENERAL WORK AND REQUIREMENTS WITH MECHANICAL, PLUMBING AND ELECTRICAL TRADES.
- DURING ANY DUST CAUSING CONSTRUCTION ACTIVITY, PROVIDE HEPA FILTRATION VACUUMING AND WET MOP CLEANING.
- TEST ALL ALARMS AND PROVIDE WRITTEN REPORT TO THE OWNER.
- FIELD VERIFY EXACT LOCATION OF ALL EX. BURIED UTILITIES AND EQUIPMENT PRIOR TO ANY EXCAVATING FOR NEW WORK. HAND EXCAVATE AROUND EX. UTILITIES AND AVOID DAMAGING OR INTERRUPTION OF SERVICES.
- CONTRACTOR SHALL CONFIRM THAT UTILITIES LOCATE SERVICES HAVE BEEN COMPLETED BEFORE ANY EXCAVATION.
- PROVIDE ASPHALT + CONCRETE TO MATCH EXISTING GRADE ELEVATION AROUND ALL NEW EQUIPMENT AND CONCRETE PADS.
- CONTRACTOR SHALL TAKE ALL MEASURES NECESSARY TO AVOID DAMAGING LANDSCAPE AND LAWN AREAS. ALL LANDSCAPE AND LAWN AREAS DISTURBED BY CONSTRUCTION SHALL BE RESTORED TO ORIGINAL CONDITION AND AS APPROVED BY THE OWNER.
- CONTRACTOR SHALL PROVIDE FUEL FOR NEW TANK. TOP OFF OF THE NEW FUEL TANK, AFTER ALL TESTING IS COMPLETE.
- THE BACKFILL MATERIAL SHALL BE PLACED IN LOOSE 6 INCH LIFTS AND COMPACTED TO AT LEAST 95% OF ITS MAXIMUM DENSITY WITH A MOISTURE CONTENT THAT IS NO MORE THAN 1% GREATER THAN OR 2% LESS THAN THE OPTIMUM MOISTURE AS DETERMINED IN ACCORDANCE WITH CURRENT ASTM DESIGNATION D-1557 (MODIFIED PROCTOR). COMPACTION TEST RESULTS CONFIRMING COMPLIANCE SHALL BE PROVIDED TO OWNER.
- PROVIDE REQUIRED PERMITTING, ASSOCIATED FEES, ANY SPECIAL INSPECTION FEES AND HANDLE REQUIRED NEGOTIATION WITH THE CITY/COUNTY/AUTHORITY HAVING JURISDICTION (AHJ).
- PREPARE AND SUBMIT A DETAILED SCHEDULE AND DESCRIPTION OF THE PROCEDURE TO BE FOLLOWED IN ACCOMPLISHING THE WORK FOR PRIOR APPROVAL BY THE OWNER. SUBMIT THE PROPOSED SCHEDULE AT LEAST (10) BUSINESS DAYS PRIOR TO ACCOMPLISHING THE WORK.
- THE SCOPE OF SERVICES OF ENG GROUP AND ITS CONSULTANTS DO NOT INCLUDE ANY SERVICES OR INFORMATION RELATED TO ASBESTOS OR HAZARDOUS OR TOXIC MATERIALS. IN THE EVENT THAT ASBESTOS OR HAZARDOUS OR TOXIC MATERIALS ARE ENCOUNTERED ON THIS JOBSITE, OR SHOULD IT BECOME KNOWN IN ANY WAY THAT SUCH MATERIALS MAY BE PRESENT AT THE JOBSITE OR ANY ADJACENT AREAS, PERFORMANCE OF SERVICES ON THE PROJECT SHALL BE SUSPENDED AND PROVIDE APPROPRIATE SPECIALIST CONSULTANTS AND CONTRACTORS TO IDENTIFY, ABATE AND/OR REMOVE THE SUBJECT MATERIALS.
- PROTECT EXISTING BLDG FLOORS WITH PLYWOOD/MASONITE BOARD AGAINST DAMAGE WHEN REMOVING OR BRINGING NEW UNITS INSIDE THE SPACE. RECOMMEND TAKING PICTURES BEFORE/AFTER AND HAVING MEETING WITH OWNER TO INSPECT FLOORS BEFORE/AFTER INSTALLING NEW EQUIPMENT. IF THE FLOOR OR WALLS ARE DAMAGED, SHALL BE FIXED AS REQUIRED AT NO ADDITIONAL COST TO OWNER.
- TRASH REMOVAL:
  - CANNOT USE EXISTING DUMPSTER ONSITE FOR TRASH REMOVAL.
  - OWNER CAN ARRANGE A SPACE FOR CONTRACTOR TO PLACE DUMPSTER ONSITE FOR PROJECT, OTHERWISE ALL TRASH WILL NEED TO BE HAULED OFF.
  - CLEAN WORK AREA EACH DAY.

### GEN + ATS ALARMS FOR MONITORING

NEW GENERATOR
1. START / RUN
2. NOT IN AUTO
3. ON LOAD
4. WEAK / LOW BATTERY
5. BATTERY CHARGER TROUBLE
6. BKR OPEN / TRIPPED
7. GEN MAJOR ALARM / FAIL
8. FUEL LEAK
9. LOW FUEL
10. SPARE
NEW ATS
1. ATS ON GEN
2. LOSS OF UTILITY
3. FAIL TO TRANSFER
4. ATS ON LOAD

#### NOTES:

- ASSIST THE OWNER WITH ALARMS TESTING. PROVIDE TEST REPORT TO THE CLOSE-OUT DOCUMENTS.

REV. NO.	REVISION DESCRIPTION	APP'D.	DRN/CND	DATE
A	ADDED OWNER COMMENTS + REMOVED UPS + EXTERIOR ATS	MM	CM/MM	07/02/21
0	ISSUED FOR REVIEW	MM	CM/MM	06/28/21
EXCEPT AS MAY BE OTHERWISE PROVIDED BY CONTRACT THESE DRAWINGS AND SPECIFICATIONS ARE THE PROPERTY OF JACKSON COUNTY GA AND ARE ISSUED IN STRICT CONFIDENCE. THEY SHALL NOT BE REPRODUCED, COPIED, OR USED WITHOUT WRITTEN PERMISSION BY JACKSON COUNTY GA.		NAME JACKSON COUNTY CORRECTIONAL INSTITUTION PROBATION DETENTION CENTER 265 I W DAVIS RD, JEFFERSON, GA 30549		
ENG Group, Inc. 3100 FIVE FORKS TRICKUM RD, STE 601 LILBURN, GA 30047 TEL (770) 575-3537 FAX (866) 531-2419 EMAIL: mlitchm@eng-group.com		TITLE <b>GENERAL &amp; DEMOLITION NOTES</b>		
DRAWN CM	CHECKED MM	APP'D. MM	SHEET	DRAWING NO. <b>E-54</b>
DATE 07/02/21	SCALE AS NOTED	ENG GROUP PROJECT NO. 21103		REV. 0