

- NOTES:**
- ALL FITTINGS AND APPURTENANCES SHALL HAVE RESTRAINED JOINTS PER THE PROJECT MANUAL.
 - ALL TRENCHES SHALL BE EXCAVATED TO ALLOW MATCHING OF ALL PIPE CROWN (T.O.P.) ELEVATIONS.
 - TEMPORARILY REMOVE AND SET ASIDE TWO PANELS (MAX.) OF EXISTING CHAIN LINK FENCE AND BARBED WIRE FOR FORCE MAIN CONSTRUCTION. INSTALL AND CONTINUOUSLY MAINTAIN 4-FT HIGH ORANGE SAFETY FENCE ACROSS FENCE OPENING UNTIL TRENCH RESTORATION IS COMPLETE AND CHAIN LINK FENCE IS RESTORED TO PRE-CONSTRUCTION CONDITIONS. FENCE RESTORATION SHALL BE IN ACCORDANCE WITH INDEX 550-002, FDOT STANDARD PLANS FOR ROAD CONSTRUCTION.
 - TEMPORARY FENCE REMOVAL AND REINSTALLATION PAY ITEM INCLUDES ALL LABOR AND MATERIALS TO REMOVE A PORTION OF EXISTING FENCING AND FENCE POSTS AS REQUIRED TO CONSTRUCT THE FORCE MAIN, INCLUDING LABOR AND MATERIALS REQUIRED TO RESTORE SAME.
 - CONTRACTOR SHALL RESOD ENTIRE LENGTH OF PIPELINE TRENCHES. WIDTH OF RESODDING SHALL BE 24" EITHER SIDE OF OUTSIDE OF PIPE.
 - CONTRACTOR SHALL PROTECT EXISTING TREES TO THE MAXIMUM EXTENT PRACTICABLE. REMOVAL OF EXISTING TREES SHALL BE ACCOMPLISHED IN COORDINATION WITH THE GOLF COURSE SUPERINTENDENT. CONTRACTOR SHALL RETAIN THE SERVICES OF A CERTIFIED ARBORIST FOR CONSULTATION PRIOR TO TREE REMOVAL.

Rev	Date	Drawn	Description	Ch'k'd	App'd
B0	10/15/2021	SLM	ISSUED FOR BID	MK	KM

MOTT MACDONALD

Mott MacDonald Florida, LLC.
220 West Garden Street
Suite 700
Pensacola, FL 32502
United States of America
T +1 (850) 484 6011
www.mottmac.com/americas

Architects Engineers Surveyors
AA - C0000035 EB - 0000155 LB - 0006783

Client

CITY OF FORT WALTON BEACH

Title

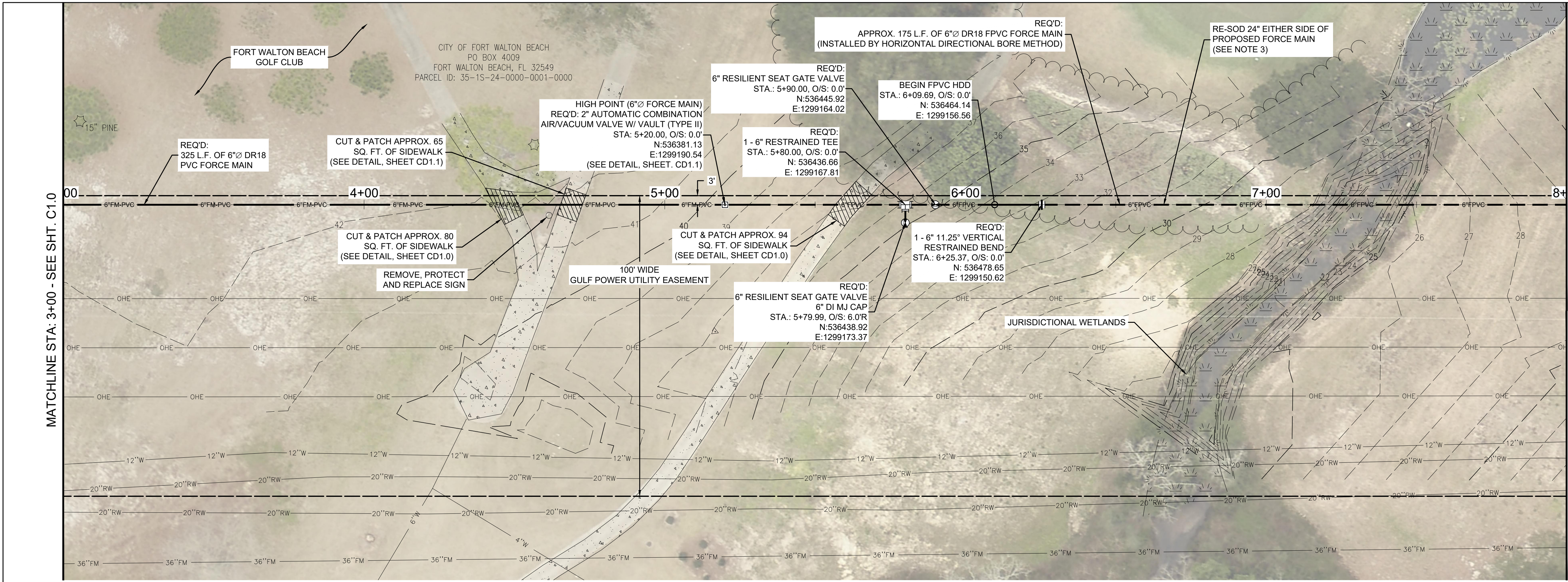
UTILITY INFRASTRUCTURE DESIGN
FOR FREEDOM BEACH
12" WATER MAIN AND 6" FORCE MAIN
PLAN & PROFILE
STA: 0+00 - 3+00

ISSUED FOR BID

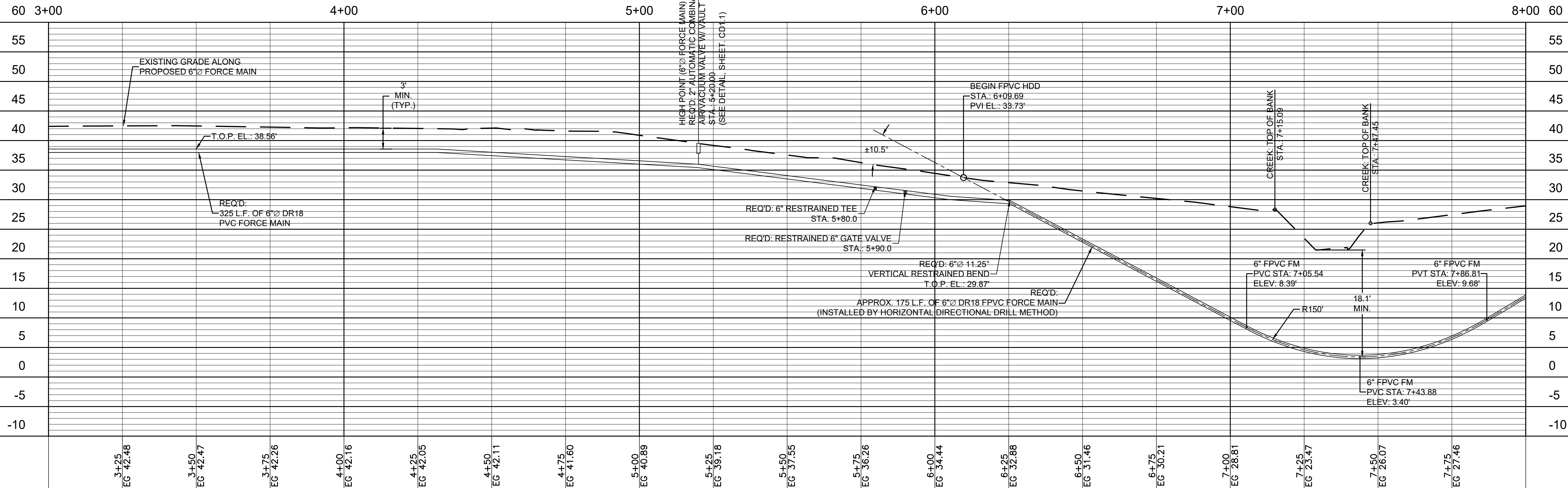
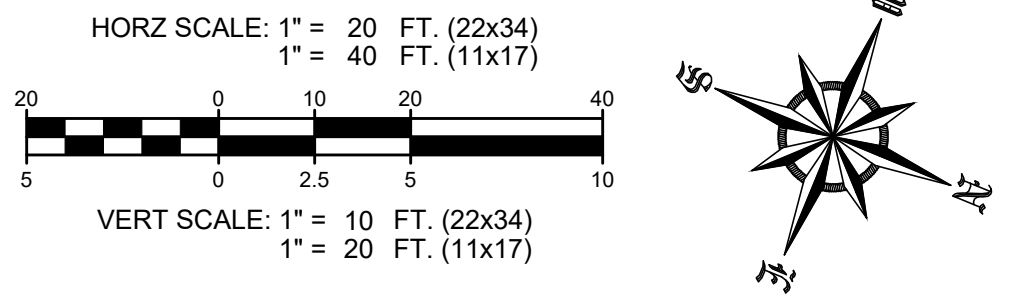
THIS DRAWING IS PART OF A DIGITALLY SIGNED AND SEALED SET OF DRAWINGS. IN ACCORDANCE WITH 61G15-23.004, F.A.C. PRINTED COPIES OF THIS DRAWING ARE NOT CONSIDERED SIGNED AND SEALED AND ALL SIGNATURES MUST BE VERIFIED ON ANY ELECTRONIC COPIES.

Project Number	502100083-003	B/O	4	Total	13
Designed	M. KANE	Eng check			
Drawn	S. MILLSTEAD	Coordination	M. KANE		
Dwg check		Approved	K. MORGAN		
Scale at ANSI D	Status	Rev	Security		
	BID	B0	STD		
Drawing Number	C1.0				

Use Name: M115292
Time Stamp: Oct 15 2021 1:18:08PM
Drawing Name: C1.0.dwg
Drawing Path: C:\working\hmm\water_wastewater\m115292\05654704



- NOTES:**
- ALL FITTINGS AND APPURTENANCES SHALL HAVE RESTRAINED JOINTS PER THE PROJECT MANUAL.
 - ALL TRENCHES SHALL BE EXCAVATED TO ALLOW MATCHING OF ALL PIPE CROWN (T.O.P.) ELEVATIONS.
 - CONTRACTOR SHALL RESOD ENTIRE LENGTH OF PIPELINE TRENCHES. WIDTH OF RESODDING SHALL BE 24" EITHER SIDE OF OUTSIDE OF PIPE.
 - THE TRANSITION FROM FPVC TO PUSH-ON JOINT PVC SHALL BE MADE WITH THE APPROPRIATE RESTRAINED-JOINT D.I. FITTINGS. THE END OF THE FPVC SHALL NOT BE DEFLECTED (EITHER MANUALLY OR BY MACHINE) TO FORCE A STRAIGHT-LINE CONNECTION TO THE PVC OUTSIDE OF THE BORE LIMITS.
 - CONTRACTOR SHALL PROTECT EXISTING TREES TO THE MAXIMUM EXTENT PRACTICABLE. REMOVAL OF EXISTING TREES SHALL BE ACCOMPLISHED IN COORDINATION WITH THE GOLF COURSE SUPERINTENDENT. CONTRACTOR SHALL RETAIN THE SERVICES OF A CERTIFIED ARBORIST FOR CONSULTATION PRIOR TO TREE REMOVAL.
 - CONTRACTOR SHALL STABILIZE AND LEVEL EXISTING SLOPE PRIOR TO SETTING UP DRILLING RIG TO ENSURE SOUND ANCHORAGE OF DRILLING RIG.



Rev	Date	Drawn	Description	Ch'k'd	App'd
B0	10/15/2021	SLM	ISSUED FOR BID	MK	KM

M M
MOTT MACDONALD

Mott MacDonald Florida, LLC.
220 West Garden Street
Suite 700
Pensacola, FL 32502
United States of America
T +1 (850) 484 6011
www.mottmac.com/americas

Architects Engineers Surveyors
AA - C0000035 EB - 0000155 LB - 0006783

Client

CITY OF FORT WALTON BEACH

Title

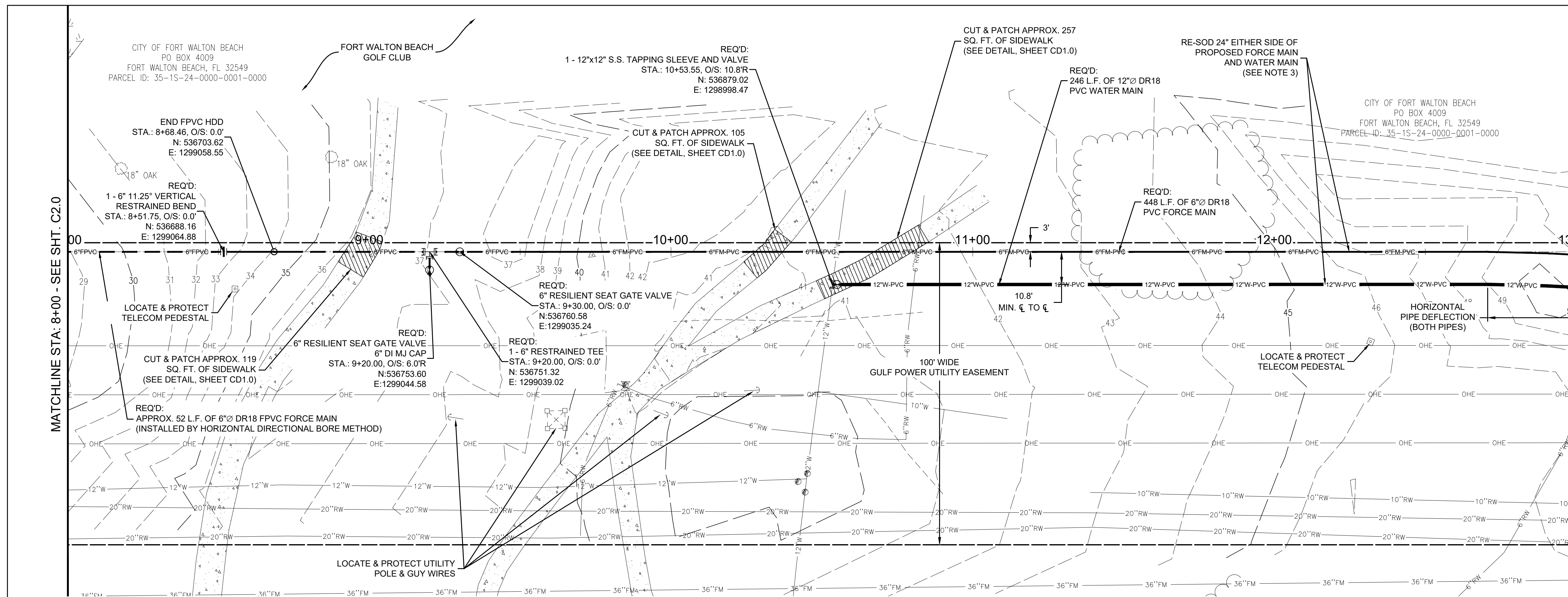
UTILITY INFRASTRUCTURE DESIGN FOR FREEDOM BEACON
12" WATER MAIN AND 6" FORCE MAIN
PLAN & PROFILE
STA: 3+00 - 8+00

ISSUED FOR BID

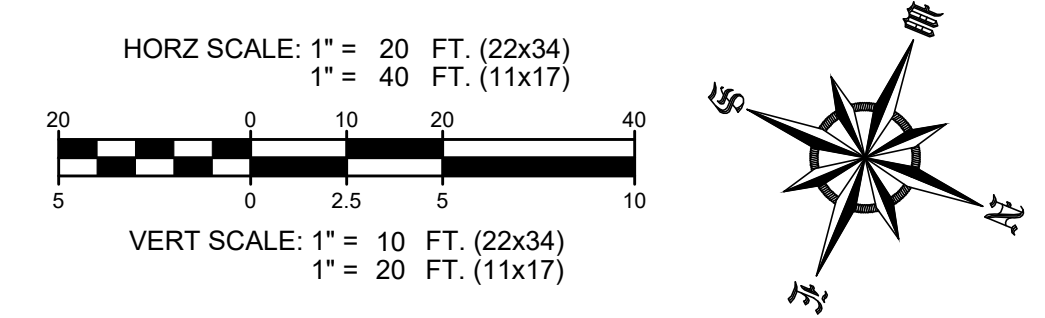
THIS DRAWING IS PART OF A DIGITALLY SIGNED AND SEALED SET OF DRAWINGS. IN ACCORDANCE WITH 61G15-23.004, F.A.C. PRINTED COPIES OF THIS DRAWING ARE NOT CONSIDERED SIGNED AND SEALED AND ALL SIGNATURES MUST BE VERIFIED ON ANY ELECTRONIC COPIES.

Project Number	502100083-003	B/O	5	Total	13
Designed	M. KANE	Eng check			
Drawn	S. MILLSTEAD	Coordination	M. KANE		
Dwg check		Approved	K. MORGAN		
Scale at ANSI D	Status	Rev	Security		
	BID	B0	STD		
Drawing Number	C2.0				

User Name: MLL35922
 Time Stamp: Oct 19, 2021 - 12:12:13PM
 Drawing Name: C2.0.dwg
 Drawing Path: C:\working\mml\water_walton\water\mll35922\0524.dwg



- NOTES:**
- ALL FITTINGS AND APPURTENANCES SHALL HAVE RESTRAINED JOINTS PER THE PROJECT MANUAL.
 - ALL TRENCHES SHALL BE EXCAVATED TO ALLOW MATCHING OF ALL PIPE CROWN (T.O.P.) ELEVATIONS.
 - CONTRACTOR SHALL RESOD ENTIRE LENGTH OF PIPELINE TRENCHES. WIDTH OF RESODDING SHALL BE 24" EITHER SIDE OF OUTSIDE OF PIPE.
 - THE TRANSITION FROM FPVC TO PUSH-ON JOINT PVCPC SHALL BE MADE WITH THE APPROPRIATE RESTRAINED-JOINT D.I. FITTINGS. THE END OF THE FPVC SHALL NOT BE DEFLECTED (EITHER MANUALLY OR BY MACHINE) TO FORCE A STRAIGHT-LINE CONNECTION TO THE PVCPC OUTSIDE OF THE BORE LIMITS.
 - CONTRACTOR SHALL PROTECT EXISTING TREES TO THE MAXIMUM EXTENT PRACTICABLE. REMOVAL OF EXISTING TREES SHALL BE ACCOMPLISHED IN COORDINATION WITH THE GOLF COURSE SUPERINTENDENT. CONTRACTOR SHALL RETAIN THE SERVICES OF A CERTIFIED ARBORIST FOR CONSULTATION PRIOR TO TREE REMOVAL.

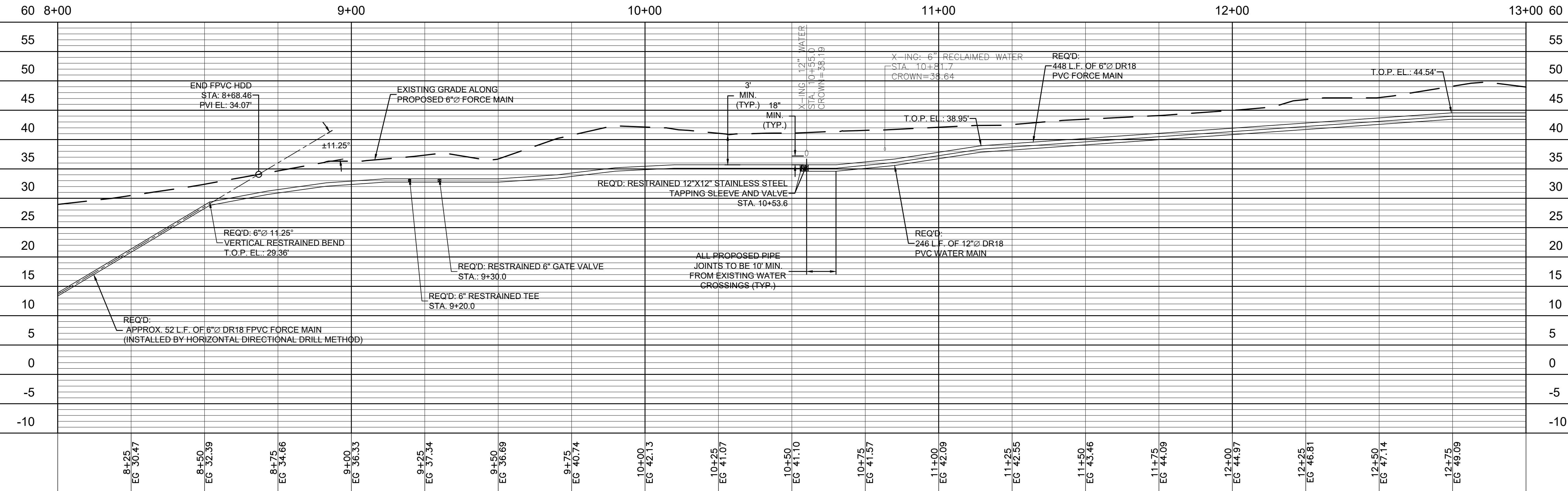


Rev	Date	Drawn	Description	Ch'k'd	App'd
B0	10/15/2021	SLM	ISSUED FOR BID	MK	KM

M M
MOTT MACDONALD

Mott MacDonald Florida, LLC.
220 West Garden Street
Suite 700
Pensacola, FL 32502
United States of America
T +1 (850) 484 6011
www.mottmac.com/americas

Architects Engineers Surveyors
AA - C0000035 EB - 0000155 LB - 0006783



Client
CITY OF FORT WALTON BEACH

Title
**UTILITY INFRASTRUCTURE DESIGN FOR FREEDOM BEACON
12" WATER MAIN AND 6" FORCE MAIN
PLAN & PROFILE
STA: 8+00 - 13+00**

ISSUED FOR BID

THIS DRAWING IS PART OF A DIGITALLY SIGNED AND SEALED SET OF DRAWINGS. IN ACCORDANCE WITH 61G15-23.004, F.A.C. PRINTED COPIES OF THIS DRAWING ARE NOT CONSIDERED SIGNED AND SEALED AND ALL SIGNATURES MUST BE VERIFIED ON ANY ELECTRONIC COPIES.

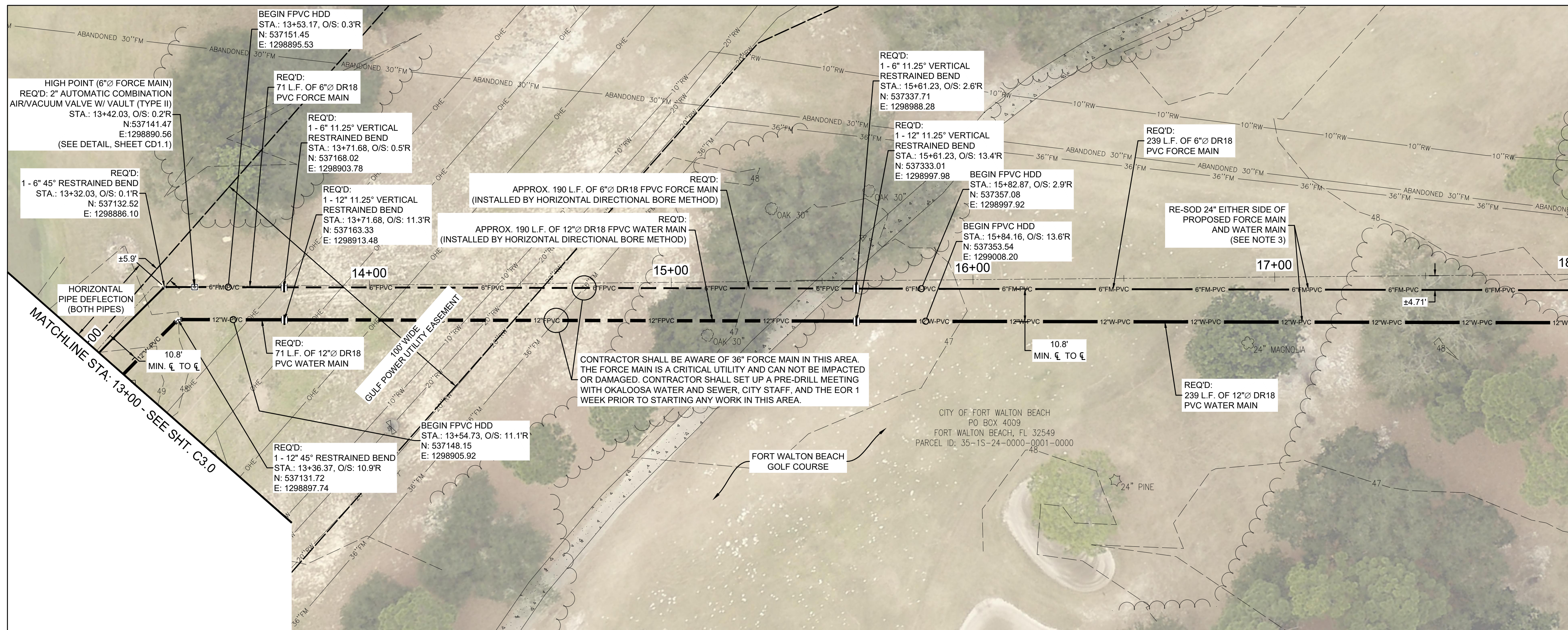
Project Number	B/O	Total
502100083-003	6	13

Designed	M. KANE	Eng check	
Drawn	S. MILLSTEAD	Coordination	M. KANE
Dwg check		Approved	K. MORGAN

Scale at ANSI D	Status	Rev	Security
	BID	B0	STD

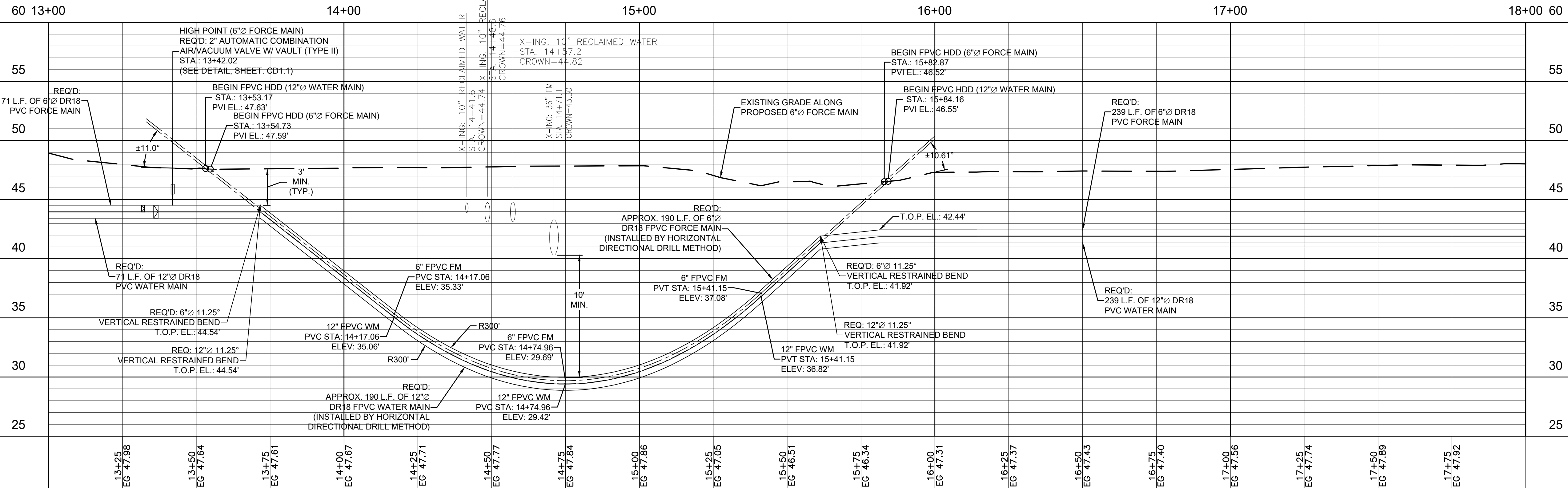
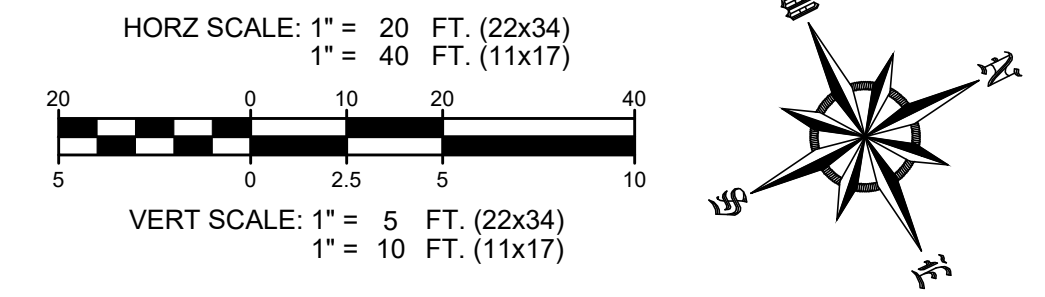
Drawing Number
C3.0

User Name: MLL35922
 Time Stamp: Jan 13, 2022 - 10:48:24AM
 Drawing Name: C3.0.dwg
 Drawing Path: C:\working\mwater_watermain\m52220526.dwg



MATCHLINE STA: 18+00- SEE SHT. C5.0

- NOTES:**
- ALL FITTINGS AND APPURTENANCES SHALL HAVE RESTRAINED JOINTS PER THE PROJECT MANUAL.
 - ALL TRENCHES SHALL BE EXCAVATED TO ALLOW MATCHING OF ALL PIPE CROWN (T.O.P.) ELEVATIONS.
 - CONTRACTOR SHALL RESOD ENTIRE LENGTH OF PIPELINE TRENCHES. WIDTH OF RESODDING SHALL BE 24" EITHER SIDE OF OUTSIDE OF PIPE.
 - THE TRANSITION FROM FPVC TO PUSH-ON JOINT PVC/P SHALL BE MADE WITH THE APPROPRIATE RESTRAINED-JOINT D.I. FITTINGS. THE END OF THE FPVC SHALL NOT BE DEFLECTED (EITHER MANUALLY OR BY MACHINE) TO FORCE A STRAIGHT-LINE CONNECTION TO THE PVC/P OUTSIDE OF THE BORE LIMITS.
 - CONTRACTOR SHALL PROTECT EXISTING TREES TO THE MAXIMUM EXTENT PRACTICABLE. REMOVAL OF EXISTING TREES SHALL BE ACCOMPLISHED IN COORDINATION WITH THE GOLF COURSE SUPERINTENDENT. CONTRACTOR SHALL RETAIN THE SERVICES OF A CERTIFIED ARBORIST FOR CONSULTATION PRIOR TO TREE REMOVAL.



Rev	Date	Drawn	Description	Ch'k'd	App'd
B0	10/15/2021	SLM	ISSUED FOR BID	MK	KM

M M
MOTT MACDONALD

Mott MacDonald Florida, LLC.
 220 West Garden Street
 Suite 700
 Pensacola, FL 32502
 United States of America
 T +1 (850) 484 6011
 www.mottmac.com/americas

Architects Engineers Surveyors
 AA - C0000035 EB - 0000155 LB - 0006783

Client

CITY OF FORT WALTON BEACH



Title

**UTILITY INFRASTRUCTURE DESIGN FOR FREEDOM BEACON
 12" WATER MAIN AND 6" FORCE MAIN
 PLAN & PROFILE
 STA: 13+00 - 18+00**

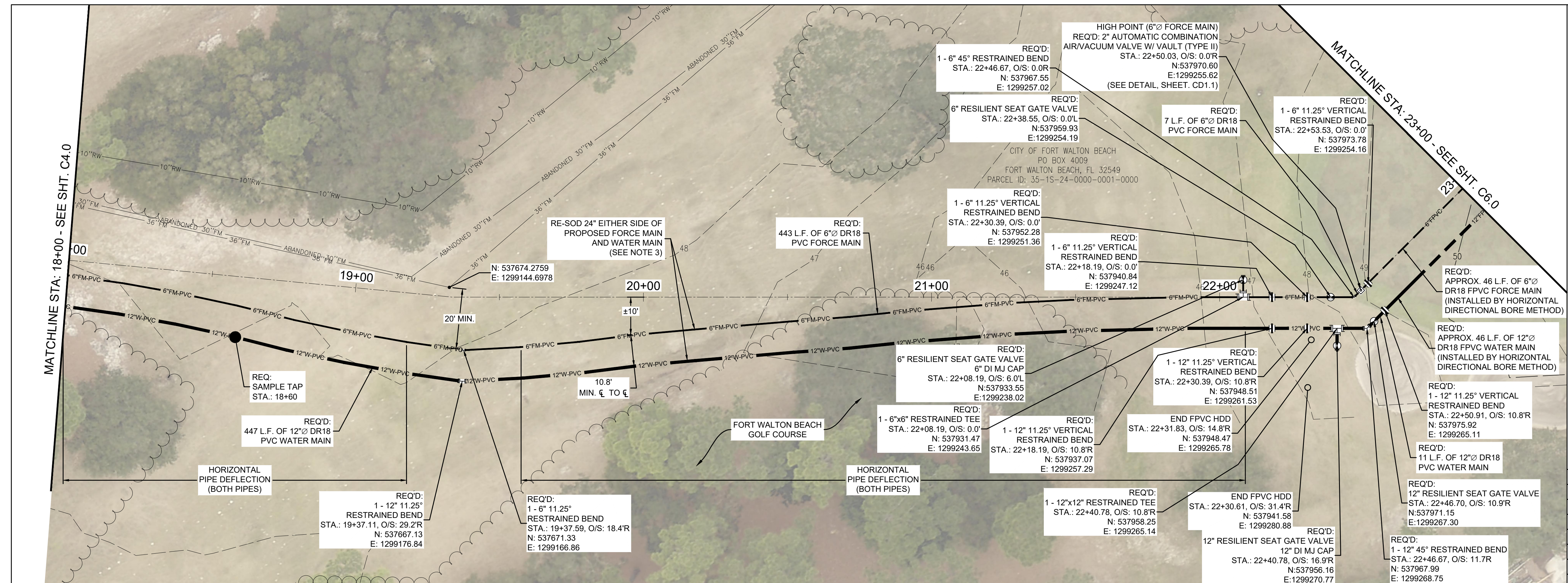
ISSUED FOR BID

THIS DRAWING IS PART OF A DIGITALLY SIGNED AND SEALED SET OF DRAWINGS. IN ACCORDANCE WITH 61G15-23.004, F.A.C. PRINTED COPIES OF THIS DRAWING ARE NOT CONSIDERED SIGNED AND SEALED AND ALL SIGNATURES MUST BE VERIFIED ON ANY ELECTRONIC COPIES.

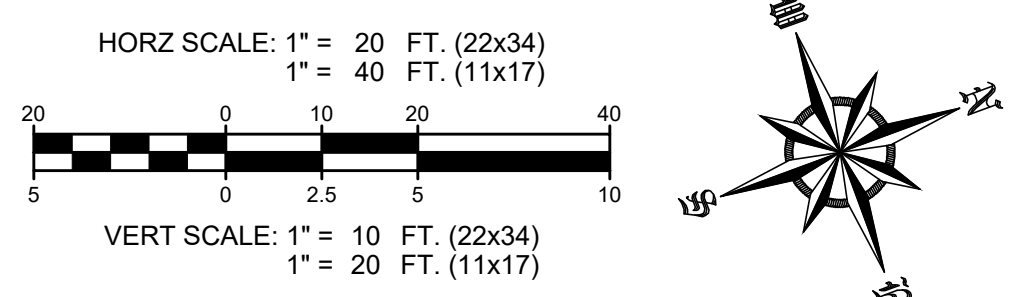
Project Number	B/O	Total
502100083-003	7	13
Designed	M. KANE	Eng check
Drawn	S. MILLSTEAD	Coordination
Dwg check		Approved
		K. MORGAN
Scale at ANSI D	Status	Rev
	BID	B0
Drawing Number		Security
C4.0		STD

User Name: MLL35922
 Time Stamp: Oct 15, 2021 - 1:18:50PM
 Drawing Name: C4.0.dwg
 Drawing Path: C:\pwworking\mottmac.com\522100083-003.dwg

© Mott MacDonald
 This document is issued for the party which commissioned it and for specific purposes connected with the captioned project only. It should not be relied upon by any other party or used for any other purpose. We accept no responsibility for the consequences of this document being relied upon by any other party, or being used for any other purpose, or containing any error or omission which is due to an error or omission in data supplied to us by other parties.



- NOTES:**
- ALL FITTINGS AND APPURTENANCES SHALL HAVE RESTRAINED JOINTS PER THE PROJECT MANUAL.
 - ALL TRENCHES SHALL BE EXCAVATED TO ALLOW MATCHING OF ALL PIPE CROWN (T.O.P.) ELEVATIONS.
 - CONTRACTOR SHALL RESOD ENTIRE LENGTH OF PIPELINE TRENCHES. WIDTH OF RESODDING SHALL BE 24" EITHER SIDE OF OUTSIDE OF PIPE.
 - THE TRANSITION FROM FPVC TO PUSH-ON JOINT PVC SHALL BE MADE WITH THE APPROPRIATE RESTRAINED-JOINT D.I. FITTINGS. THE END OF THE FPVC SHALL NOT BE DEFLECTED (EITHER MANUALLY OR BY MACHINE) TO FORCE A STRAIGHT-LINE CONNECTION TO THE PVC OUTSIDE OF THE BORE LIMITS.
 - CONTRACTOR SHALL PROTECT EXISTING TREES TO THE MAXIMUM EXTENT PRACTICABLE. REMOVAL OF EXISTING TREES SHALL BE ACCOMPLISHED IN COORDINATION WITH THE GOLF COURSE SUPERINTENDENT. CONTRACTOR SHALL RETAIN THE SERVICES OF A CERTIFIED ARBORIST FOR CONSULTATION PRIOR TO TREE REMOVAL.
 - PUTTING GREEN REPLACEMENT PAY ITEM SHALL INCLUDE ALL SOIL, SAND, FILTER FABRIC, SOD, FLAG, CUP AND ANY OTHER ITEMS NECESSARY TO RESTORE THE GREEN TO STANDARD PER USGA SPECIFICATIONS.

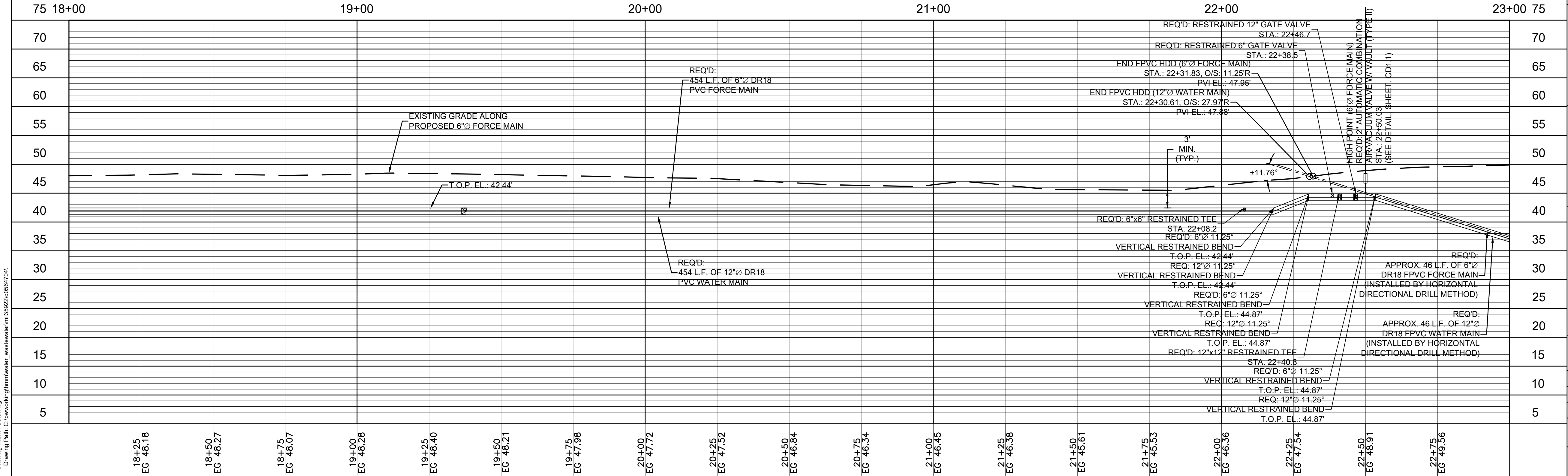


Rev	Date	Drawn	Description	Ch'k'd	App'd
B0	10/15/2021	SLM	ISSUED FOR BID	MK	KM

MOTT MACDONALD

Mott MacDonald Florida, LLC.
220 West Garden Street
Suite 700
Pensacola, FL 32502
United States of America
T +1 (850) 484 6011
www.mottmac.com/americas

Architects Engineers Surveyors
AA - C0000035 EB - 0000155 LB - 0006783



Client: **CITY OF FORT WALTON BEACH**

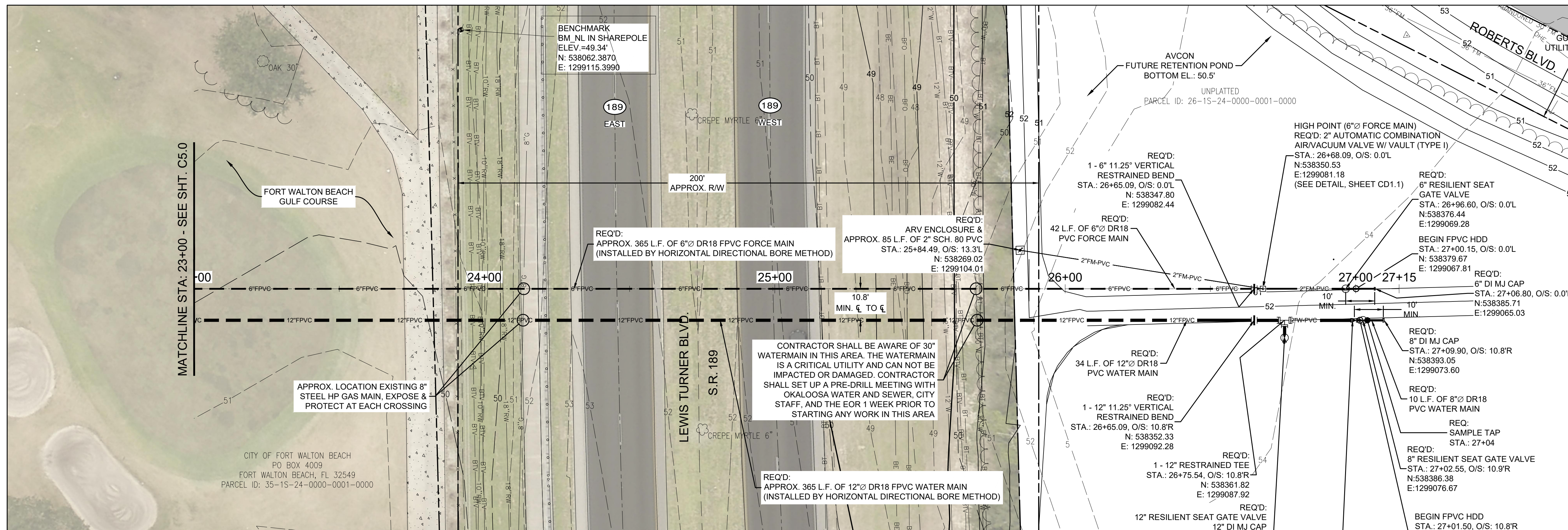
Title: **UTILITY INFRASTRUCTURE DESIGN FOR FREEDOM BEACON 12" WATER MAIN AND 6" FORCE MAIN PLAN & PROFILE STA: 18+00 - 23+00**

ISSUED FOR BID

THIS DRAWING IS PART OF A DIGITALLY SIGNED AND SEALED SET OF DRAWINGS. IN ACCORDANCE WITH 61G15-23.004, F.A.C. PRINTED COPIES OF THIS DRAWING ARE NOT CONSIDERED SIGNED AND SEALED AND ALL SIGNATURES MUST BE VERIFIED ON ANY ELECTRONIC COPIES.

Project Number	502100083-003	B/O	8	Total	13
Designed	M. KANE	Eng check			
Drawn	S. MILLSTEAD	Coordination	M. KANE		
Dwg check		Approved	K. MORGAN		
Scale at ANSI D	Status	Rev	Security		
	BID	B0	STD		
Drawing Number	C5.0				

User Name: MJD5029
 Time Stamp: Oct 19 2021 12:35:33PM
 Drawing Name: C5.0.dwg
 Drawing Path: C:\working\hmm\water_wastewater\m35029\0564704



- NOTES:**
1. ALL FITTINGS AND APPURTENANCES SHALL HAVE RESTRAINED JOINTS PER THE PROJECT MANUAL.
 2. ALL TRENCHES SHALL BE EXCAVATED TO ALLOW MATCHING OF ALL PIPE CROWN (T.O.P.) ELEVATIONS.
 3. CONTRACTOR SHALL RESOD ENTIRE LENGTH OF PIPELINE TRENCHES. WIDTH OF RESODDING SHALL BE 24" EITHER SIDE OF OUTSIDE OF PIPE.
 4. THE TRANSITION FROM FPVC TO PUSH-ON JOINT PVC SHALL BE MADE WITH THE APPROPRIATE RESTRAINED-JOINT D.I. FITTINGS. THE END OF THE FPVC SHALL NOT BE DEFLECTED (EITHER MANUALLY OR BY MACHINE) TO FORCE A STRAIGHT-LINE CONNECTION TO THE PVC OUTSIDE OF THE BORE LIMITS.
 5. TOP OF ALL VALVE BOXES AHEAD OF STA. 26+00 SHALL BE SET TO EL. 52.5.



Station	Utility Description	Material	Length	Installation Method
23+00 - 24+00	12" FPVC WM	12" FPVC	365 L.F.	Horizontal Directional Drill Method
24+00 - 25+00	6" FPVC FM	6" FPVC	365 L.F.	Horizontal Directional Drill Method
25+00 - 26+00	12" FPVC WM	12" FPVC	365 L.F.	Horizontal Directional Drill Method
26+00 - 27+00	6" FPVC FM	6" FPVC	365 L.F.	Horizontal Directional Drill Method
27+00 - 27+52.75	12" FPVC WM	12" FPVC	365 L.F.	Horizontal Directional Drill Method

Rev	Date	Drawn	Description	Ch'k'd	App'd
B0	10/15/2021	SLM	ISSUED FOR BID	MK	KM

MOTT MACDONALD

Architects Engineers Surveyors
AA - C0000035 EB - 0000155 LB - 0006783

Mott MacDonald Florida, LLC.
220 West Garden Street
Suite 700
Pensacola, FL 32502
United States of America
T +1 (850) 484 6011
www.mottmac.com/americas

CITY OF FORT WALTON BEACH

UTILITY INFRASTRUCTURE DESIGN FOR FREEDOM BEACON
12" WATER MAIN AND 6" FORCE MAIN
PLAN & PROFILE
STA: 23+00 - 27+52

ISSUED FOR BID

THIS DRAWING IS PART OF A DIGITALLY SIGNED AND SEALED SET OF DRAWINGS. IN ACCORDANCE WITH 61G15-23.004, F.A.C. PRINTED COPIES OF THIS DRAWING ARE NOT CONSIDERED SIGNED AND SEALED AND ALL SIGNATURES MUST BE VERIFIED ON ANY ELECTRONIC COPIES.

Project Number	502100083-003	B/O	9	Total	13
Designed	M. KANE	Eng check			
Drawn	S. MILLSTEAD	Coordination	M. KANE		
Dwg check		Approved	K. MORGAN		
Scale at ANSI D	Status	Rev	Security		
	BID	B0	STD		
Drawing Number	C6.0				