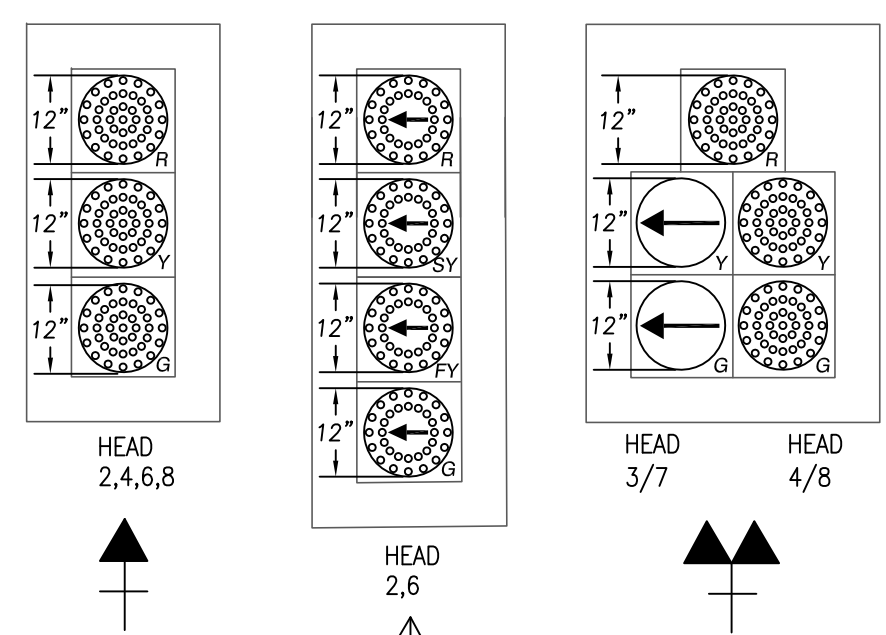
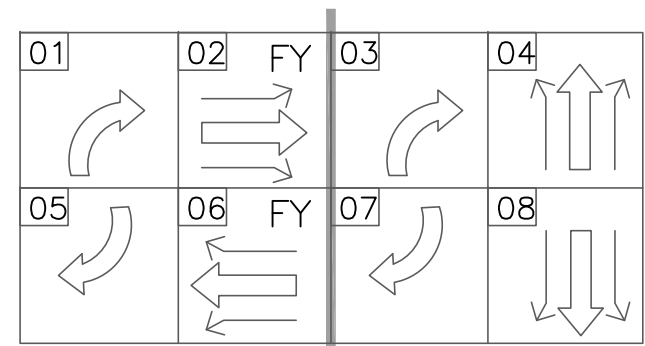


SIGNAL HEADS



PHASING DIAGRAM



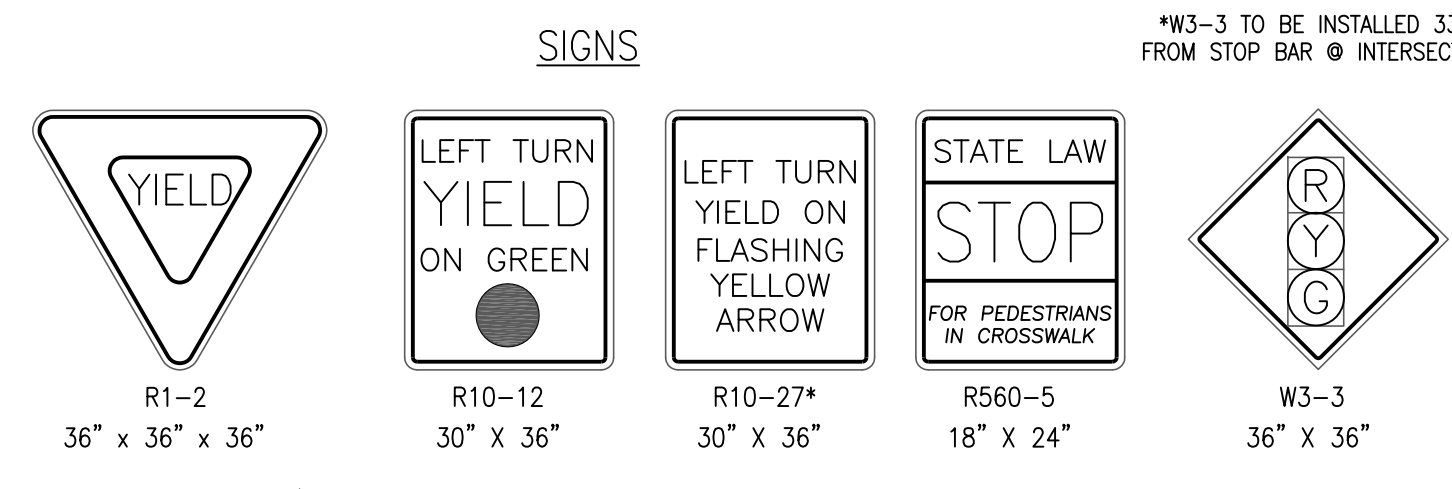
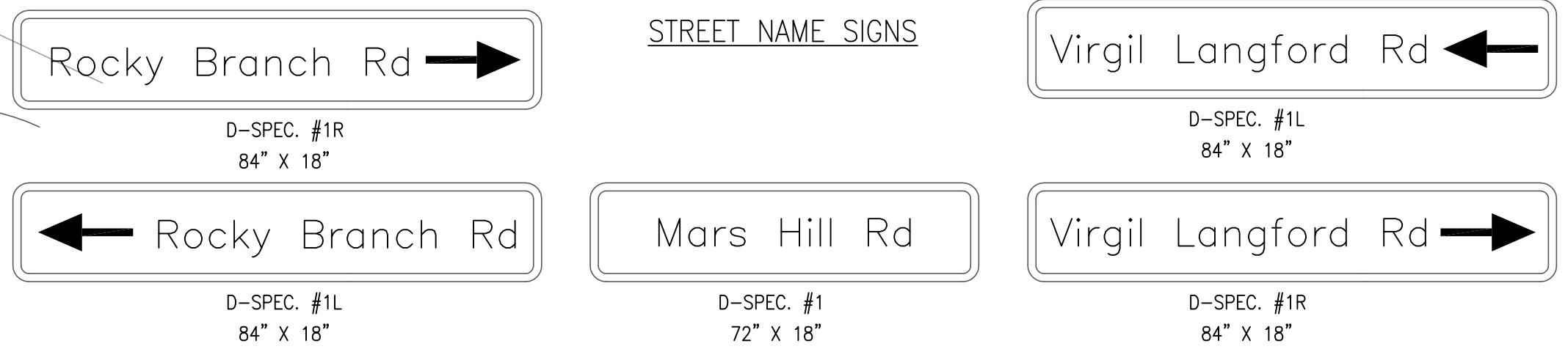
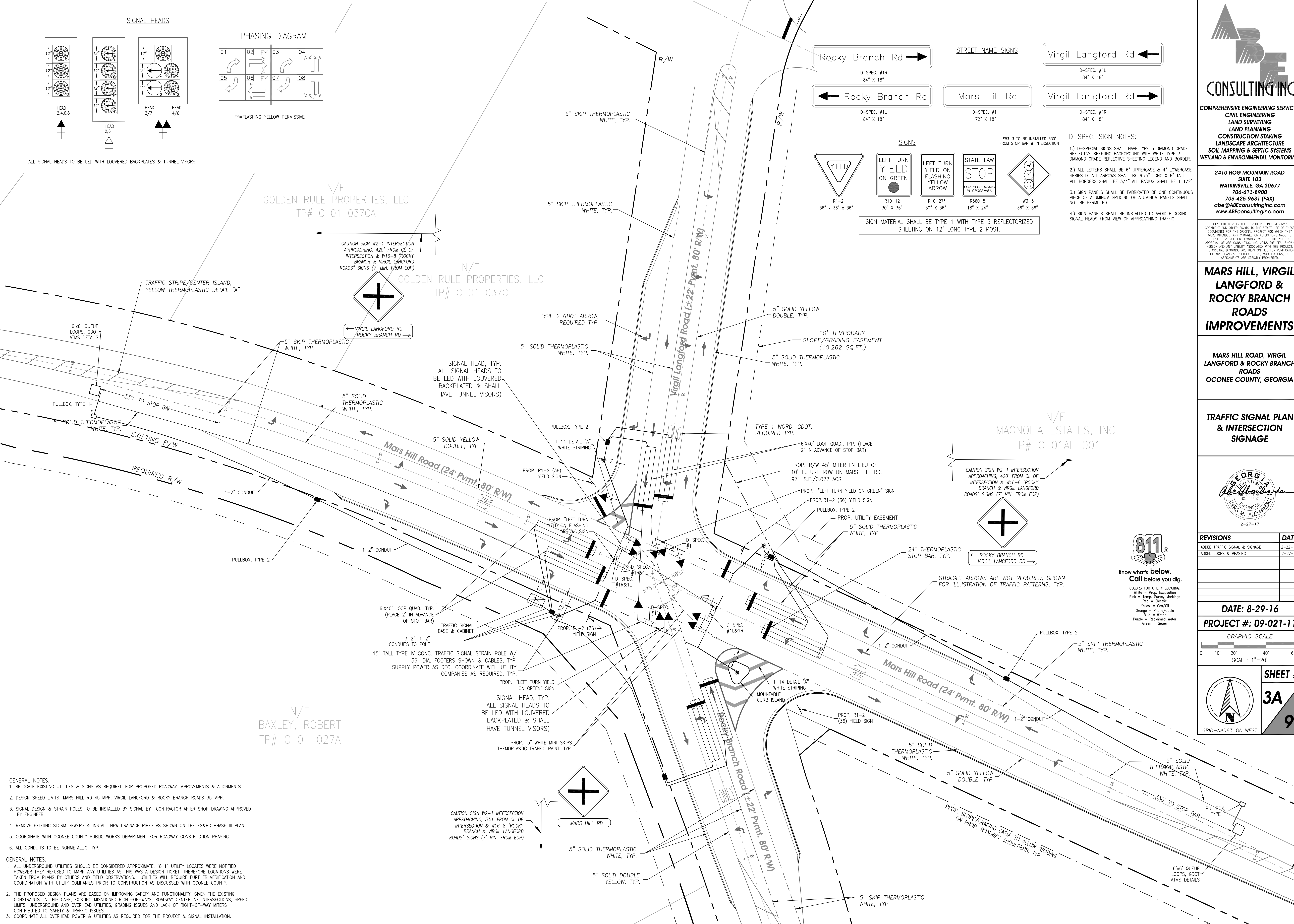
FY=FLASHING YELLOW PERMISSIVE

ALL SIGNAL HEADS TO BE LED WITH LOUVERED BACKPLATES & TUNNEL VISORS.

N/F GOLDEN RULE PROPERTIES, LLC
TP# C 01 037CA

N/F GOLDEN RULE PROPERTIES, LLC
TP# C 01 037CA

N/F MAGNOLIA ESTATES, INC
TP# C 01AE 001



- D-SPEC. SIGN NOTES:**
- 1) D-SPECIAL SIGNS SHALL HAVE TYPE 3 DIAMOND GRADE REFLECTIVE SHEETING BACKGROUND WITH WHITE TYPE 3 DIAMOND GRADE REFLECTIVE SHEETING LEGEND AND BORDER.
 - 2) ALL LETTERS SHALL BE 6" UPPERCASE & 4" LOWERCASE SERIES D. ALL ARROWS SHALL BE 6.75" LONG X 6" TALL. ALL BORDERS SHALL BE 3/4" ALL RADIUS SHALL BE 1 1/2".
 - 3) SIGN PANELS SHALL BE FABRICATED OF ONE CONTINUOUS PIECE OF ALUMINUM SPACING OF ALUMINUM PANELS SHALL NOT BE PERMITTED.
 - 4) SIGN PANELS SHALL BE INSTALLED TO AVOID BLOCKING SIGNAL HEADS FROM VIEW OF APPROACHING TRAFFIC.

SIGN MATERIAL SHALL BE TYPE 1 WITH TYPE 3 REFLECTORIZED SHEETING ON 12' LONG TYPE 2 POST.

- GENERAL NOTES:**
1. RELOCATE EXISTING UTILITIES & SIGNS AS REQUIRED FOR PROPOSED ROADWAY IMPROVEMENTS & ALIGNMENTS.
 2. DESIGN SPEED LIMITS. MARS HILL RD 45 MPH. VIRGIL LANGFORD & ROCKY BRANCH ROADS 35 MPH.
 3. SIGNAL DESIGN & STRAIN POLES TO BE INSTALLED BY SIGNAL BY CONTRACTOR AFTER SHOP DRAWING APPROVED BY ENGINEER.
 4. REMOVE EXISTING STORM SEWERS & INSTALL NEW DRAINAGE PIPES AS SHOWN ON THE ES&PC PHASE III PLAN.
 5. COORDINATE WITH OCONEE COUNTY PUBLIC WORKS DEPARTMENT FOR ROADWAY CONSTRUCTION PHASING.
 6. ALL CONDUITS TO BE NONMETALLIC, TYP.

- GENERAL NOTES:**
1. ALL UNDERGROUND UTILITIES SHOULD BE CONSIDERED APPROXIMATE. "811" UTILITY LOCATES WERE NOTIFIED HOWEVER THEY REFUSED TO MARK ANY UTILITIES AS THIS WAS A DESIGN TICKET. THEREFORE LOCATIONS WERE TAKEN FROM PLANS BY OTHERS AND FIELD OBSERVATIONS. UTILITIES WILL REQUIRE FURTHER VERIFICATION AND COORDINATION WITH UTILITY COMPANIES PRIOR TO CONSTRUCTION AS DISCUSSED WITH OCONEE COUNTY.
 2. THE PROPOSED DESIGN PLANS ARE BASED ON IMPROVING SAFETY AND FUNCTIONALITY, GIVEN THE EXISTING CONSTRAINTS. IN THIS CASE, EXISTING MISALIGNED RIGHT-OF-WAYS, ROADWAY CENTERLINE INTERSECTIONS, SPEED LIMITS, UNDERGROUND AND OVERHEAD UTILITIES, GRADING ISSUES AND LACK OF RIGHT-OF-WAY MITERS CONTRIBUTED TO SAFETY & TRAFFIC ISSUES.
 3. COORDINATE ALL OVERHEAD POWER & UTILITIES AS REQUIRED FOR THE PROJECT & SIGNAL INSTALLATION.



COMPREHENSIVE ENGINEERING SERVICES
CIVIL ENGINEERING
LAND SURVEYING
LAND PLANNING
CONSTRUCTION STAKING
LANDSCAPE ARCHITECTURE
SOIL MAPPING & SEPTIC SYSTEMS
WETLAND & ENVIRONMENTAL MONITORING

2410 HOG MOUNTAIN ROAD
SUITE 103
WATKINSVILLE, GA 30677
706-613-8900
706-425-9631 (FAX)
abe@ABEconsultinginc.com
www.ABEconsultinginc.com

COPYRIGHT © 2013 ABE CONSULTING, INC. RESERVES COPYRIGHT AND OTHER RIGHTS TO THE STRICT USE OF THESE DOCUMENTS FOR THE ORIGINAL PROJECT FOR WHICH THEY WERE PREPARED. ANY CHANGES OR ALTERATIONS MADE TO THESE CONSTRUCTION DRAWINGS WITHOUT THE WRITTEN APPROVAL OF ABE CONSULTING, INC. VIOLATES THE SEAL, SIGNATURE AND ANY LIABILITY ASSOCIATED WITH THIS PROJECT. THE ORIGINAL DRAWINGS ARE KEPT ON FILE FOR VERIFICATION OF ANY CHANGES, REPRODUCTIONS, MODIFICATIONS, OR ASSIGNMENTS ARE STRICTLY PROHIBITED.

MARS HILL, VIRGIL LANGFORD & ROCKY BRANCH ROADS IMPROVEMENTS

MARS HILL ROAD, VIRGIL LANGFORD & ROCKY BRANCH ROADS
OCONEE COUNTY, GEORGIA

TRAFFIC SIGNAL PLAN & INTERSECTION SIGNAGE



REVISIONS	DATE
ADDED TRAFFIC SIGNAL & SIGNAGE	2-22-17
ADDED LOOPS & PHASING	2-27-17

Know what's below. Call before you dig.

COLORS FOR UTILITY LOCATING:
White = Prop. Excavation
Pink = Temp. Survey Markings
Red = Electric
Yellow = Gas/Oil
Orange = Phone/Cable
Blue = Water
Purple = Reclaimed Water
Green = Sewer

DATE: 8-29-16
PROJECT #: 09-021-11
GRAPHIC SCALE
0' 10' 20' 40' 60'
SCALE: 1"=20'

SHEET #
3A
9
GRID=NAD83 GA WEST



COMPREHENSIVE ENGINEERING SERVICES
CIVIL ENGINEERING
LAND SURVEYING
LAND PLANNING
CONSTRUCTION STAKING
LANDSCAPE ARCHITECTURE
SOIL MAPPING & SEPTIC SYSTEMS
WETLAND & ENVIRONMENTAL MONITORING

2410 HOG MOUNTAIN ROAD
 SUITE 103
 WATKINSVILLE, GA 30677
 706-413-8900
 706-425-9631 (FAX)
 abe@abeconsultinginc.com
 www.abeconsultinginc.com

COPYRIGHT © 2013 ABE CONSULTING, INC. RESERVES ALL RIGHTS TO THE STRICT USE OF THESE DOCUMENTS FOR THE ORIGINAL PROJECT FOR WHICH THEY WERE PREPARED. ANY CHANGES OR ALTERATIONS MADE TO THESE CONSTRUCTION DRAWINGS WITHOUT THE WRITTEN APPROVAL OF ABE CONSULTING, INC. VIOLATES THE ORIGINAL DESIGN AND ANY LIABILITY ASSOCIATED WITH THIS PROJECT. THE ORIGINAL DRAWINGS ARE KEPT ON FILE FOR VERIFICATION OF ANY CHANGES, REPRODUCTIONS, MODIFICATIONS, OR ASSIGNMENTS ARE STRICTLY PROHIBITED.

MARS HILL, VIRGIL LANGFORD & ROCKY BRANCH ROADS IMPROVEMENTS

MARS HILL ROAD, VIRGIL LANGFORD & ROCKY BRANCH ROADS
 OCONEE COUNTY, GEORGIA

TRAFFIC SIGNAL PLAN & INTERSECTION SIGNAGE WITH EXISTING FEATURES

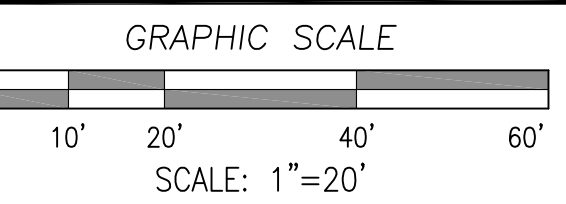


REVISIONS

REVISIONS	DATE
ADDED TRAFFIC SIGNAL & SIGNAGE	2-22-17
ADDED LOOPS & PHASING	2-27-17

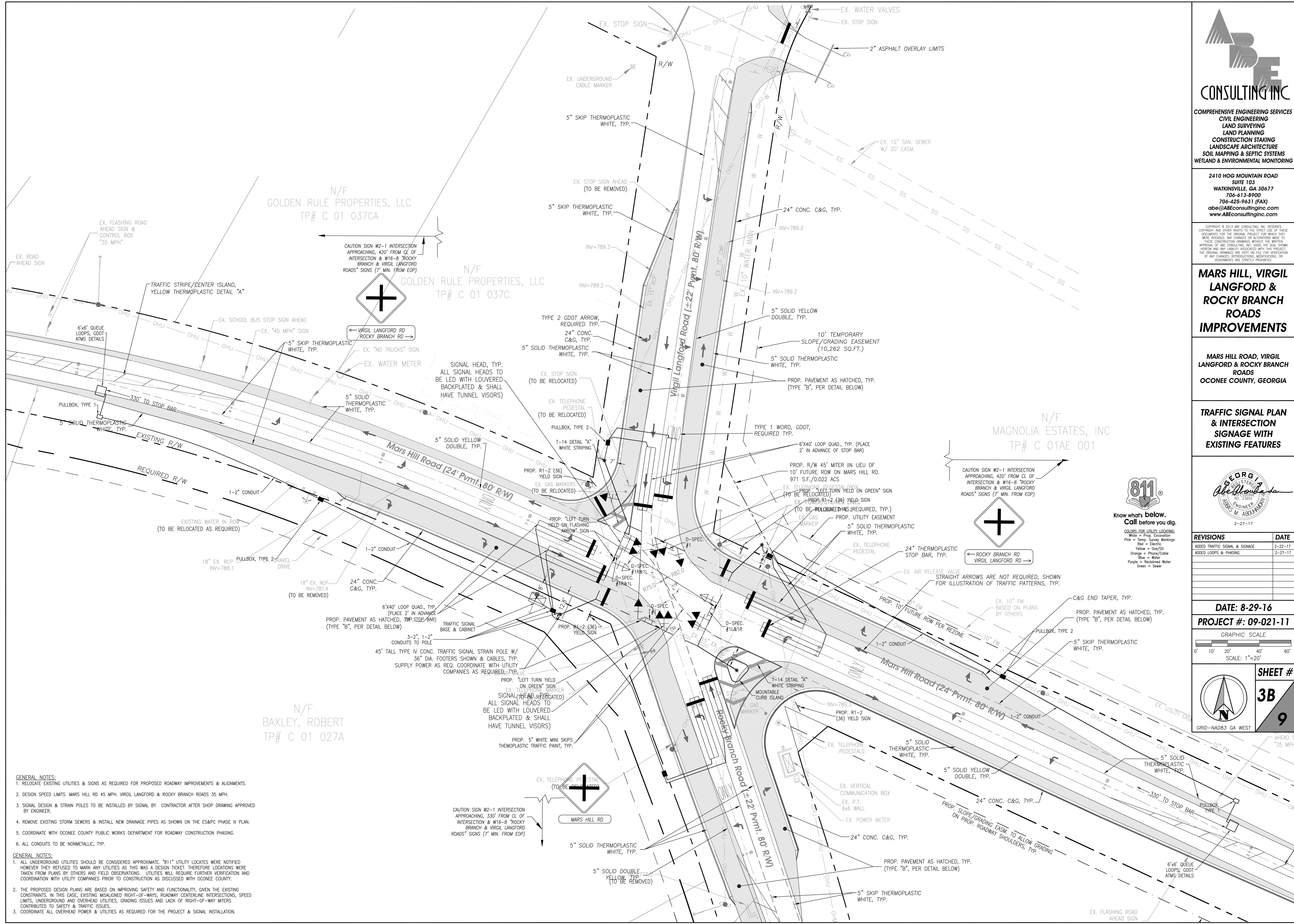
DATE: 8-29-16

PROJECT #: 09-021-11



SHEET #
3B
9

GRID-NAD83 GA WEST



- GENERAL NOTES:**
1. RELOCATE EXISTING UTILITIES & SIGNS AS REQUIRED FOR PROPOSED ROADWAY IMPROVEMENTS & ALIGNMENTS.
 2. DESIGN SPEED LIMITS. MARS HILL RD 45 MPH. VIRGIL LANGFORD & ROCKY BRANCH ROADS 35 MPH.
 3. SIGNAL DESIGN & STRAIN POLES TO BE INSTALLED BY SIGNAL BY CONTRACTOR AFTER SHOP DRAWING APPROVED BY ENGINEER.
 4. REMOVE EXISTING STORM SEWERS & INSTALL NEW DRAINAGE PIPES AS SHOWN ON THE ES&PC PHASE III PLAN.
 5. COORDINATE WITH OCONEE COUNTY PUBLIC WORKS DEPARTMENT FOR ROADWAY CONSTRUCTION PHASING.
 6. ALL CONDUITS TO BE NONMETALLIC, TYP.

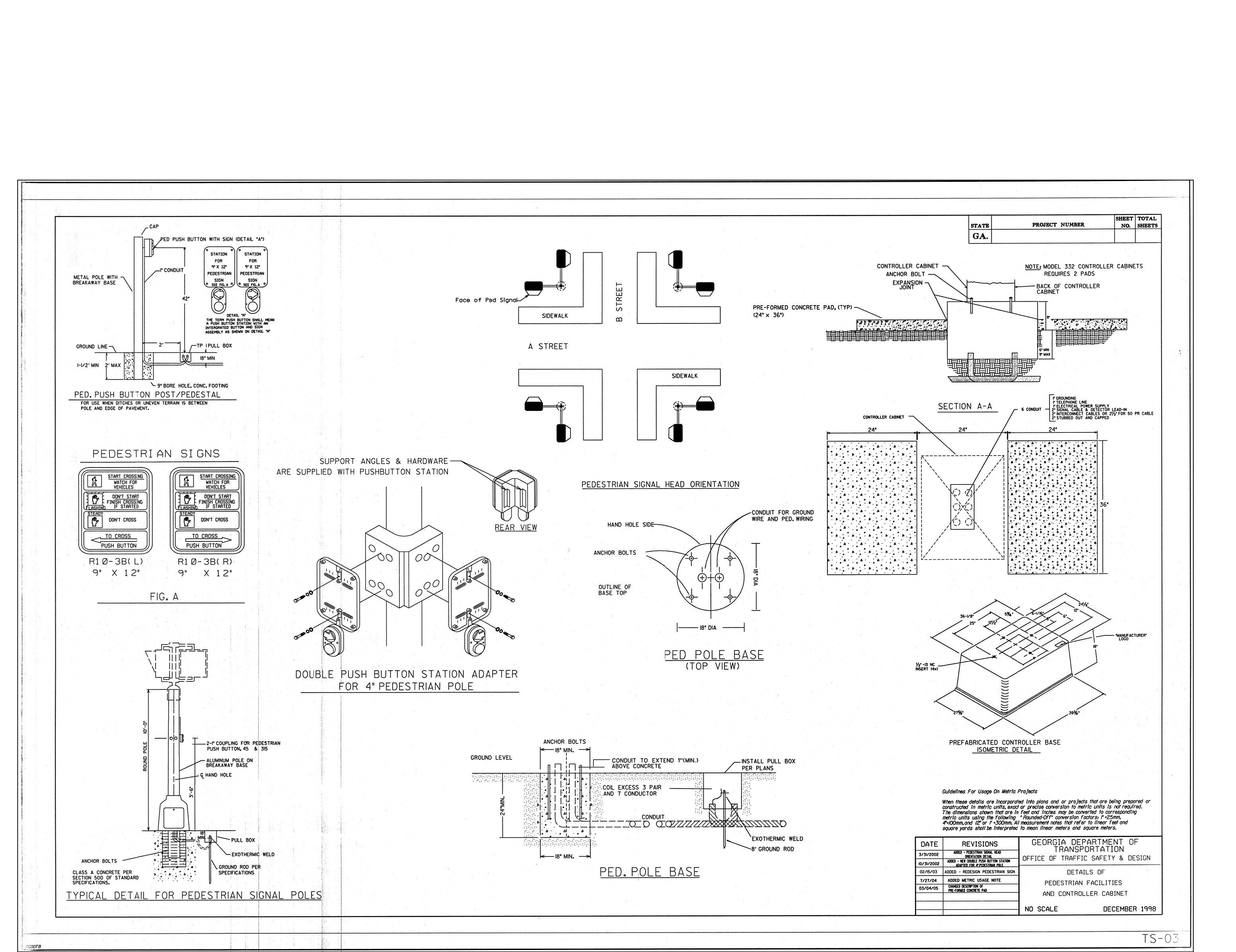
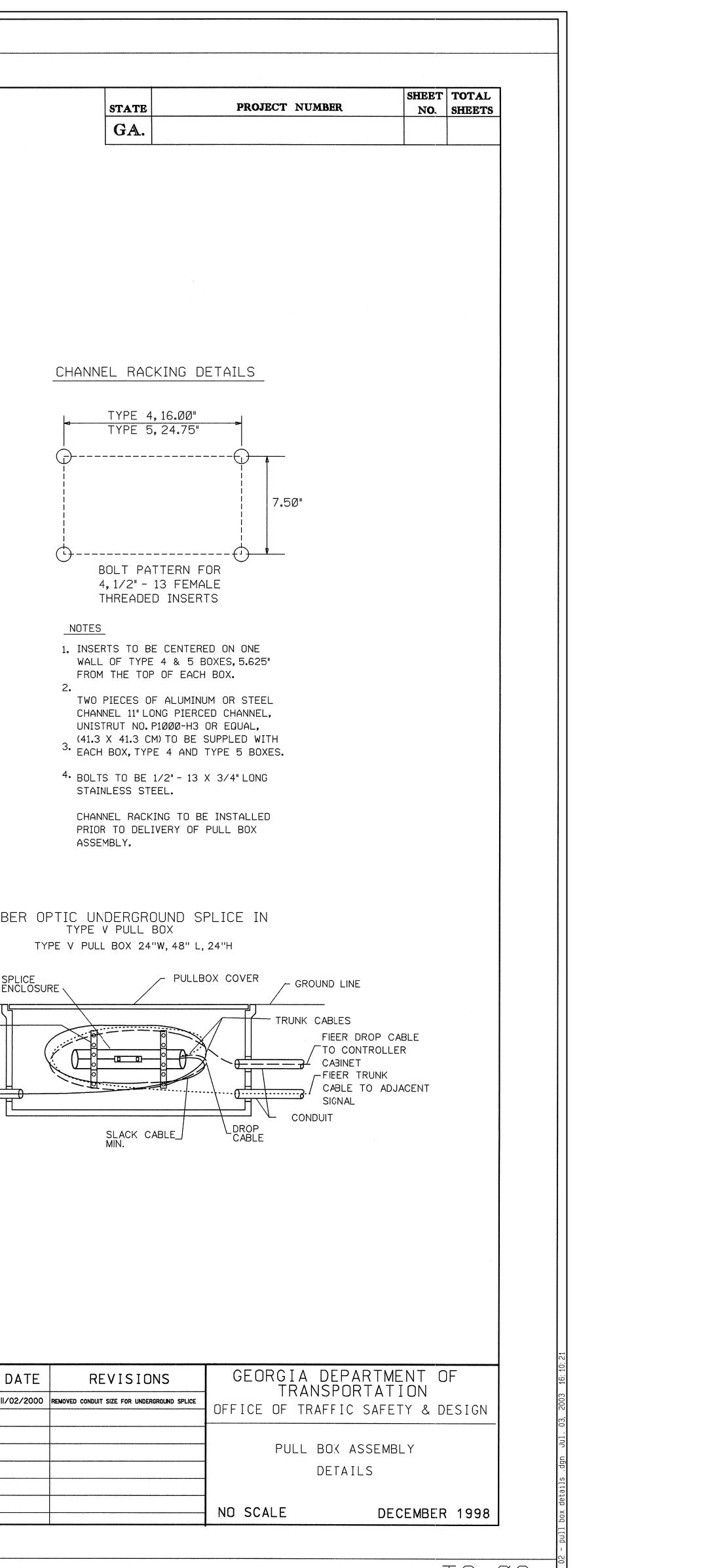
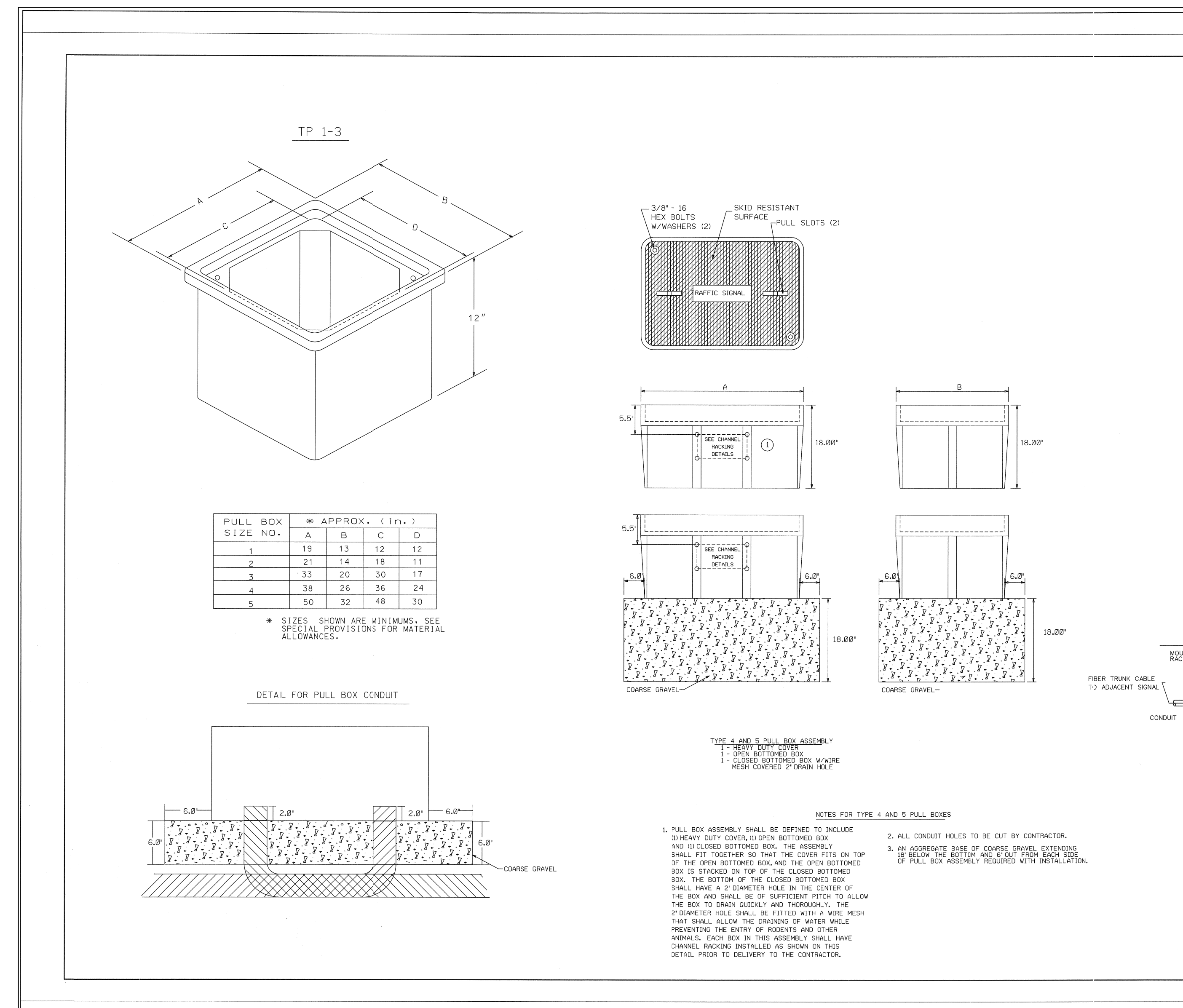
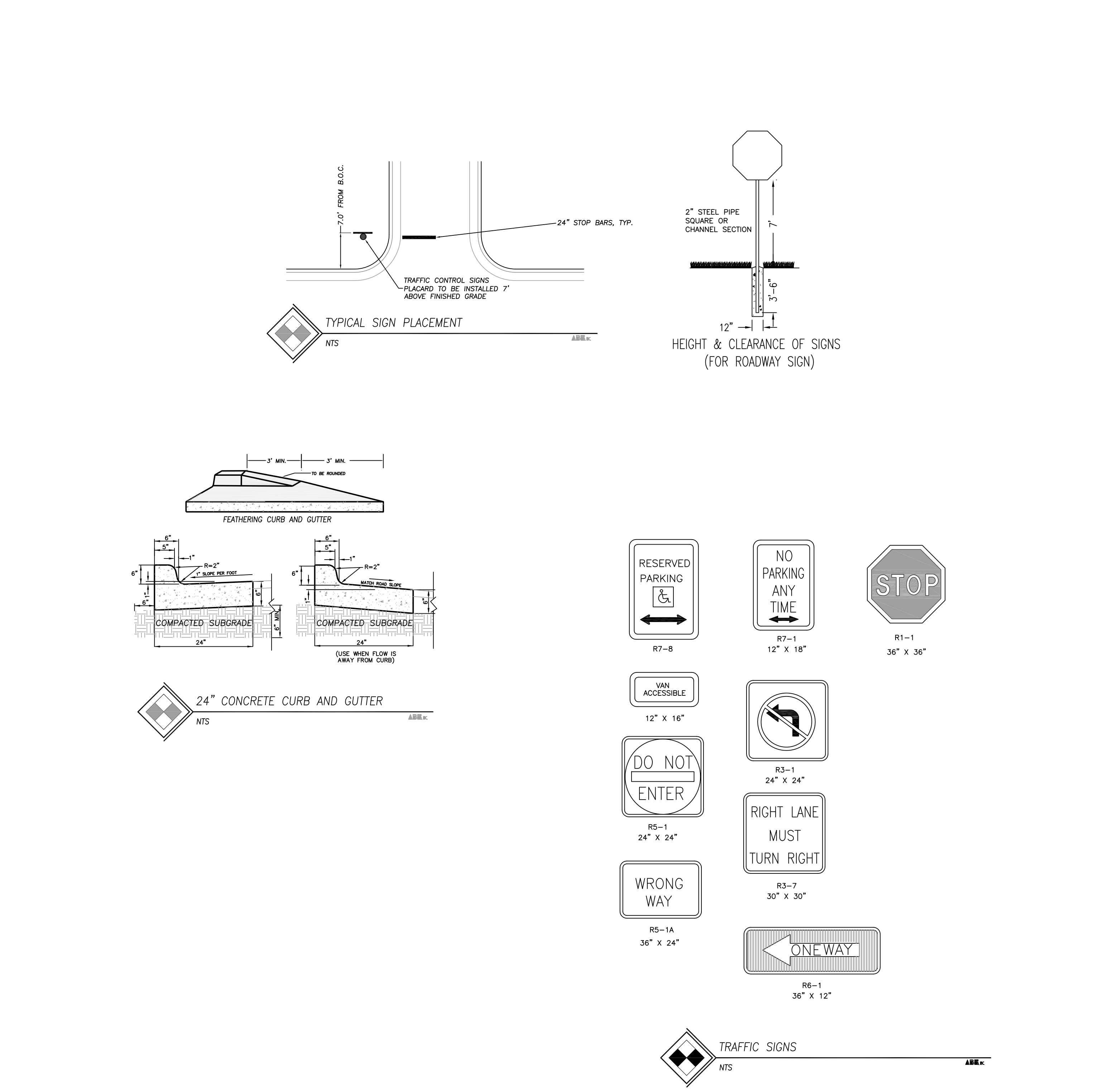
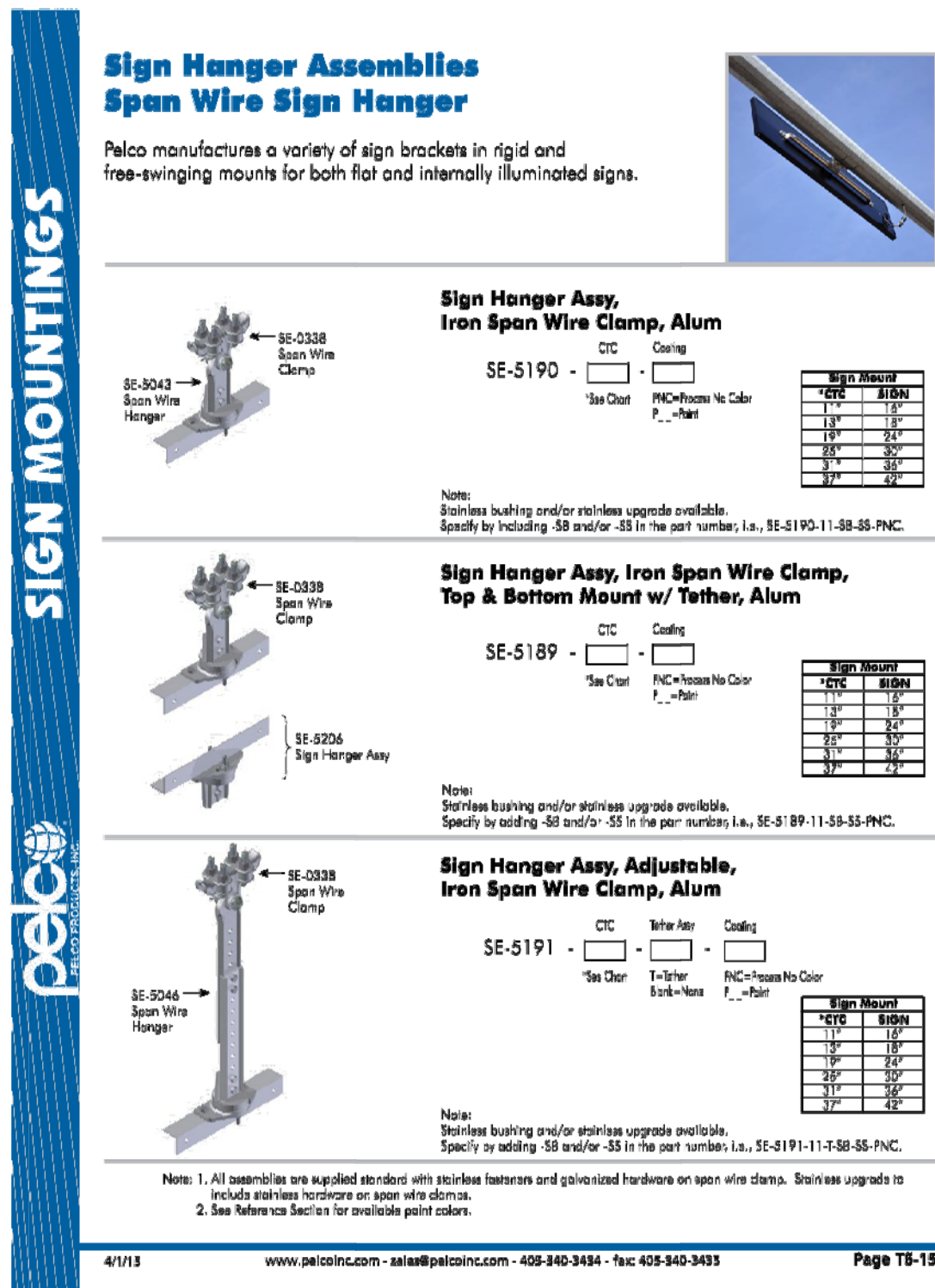
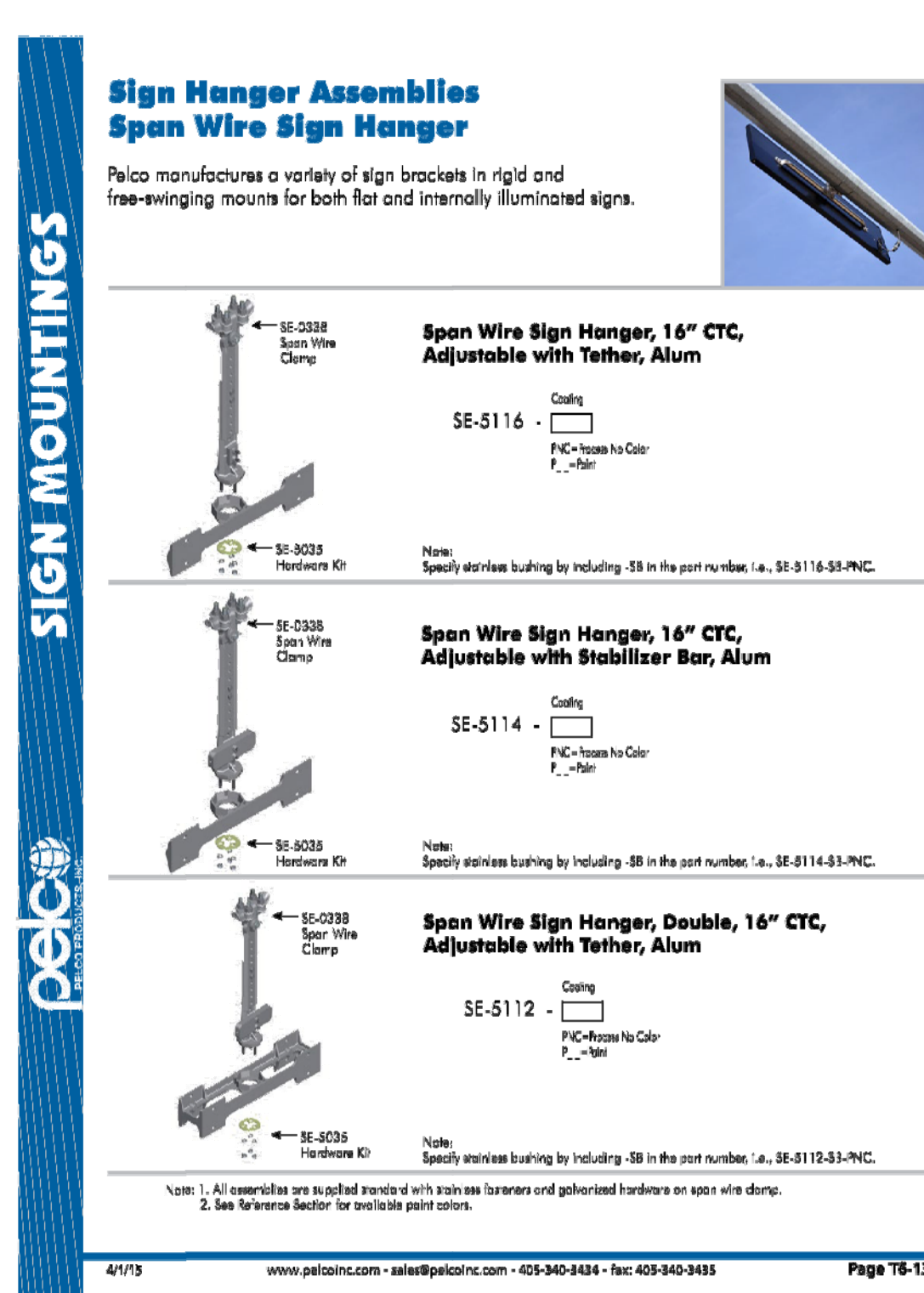
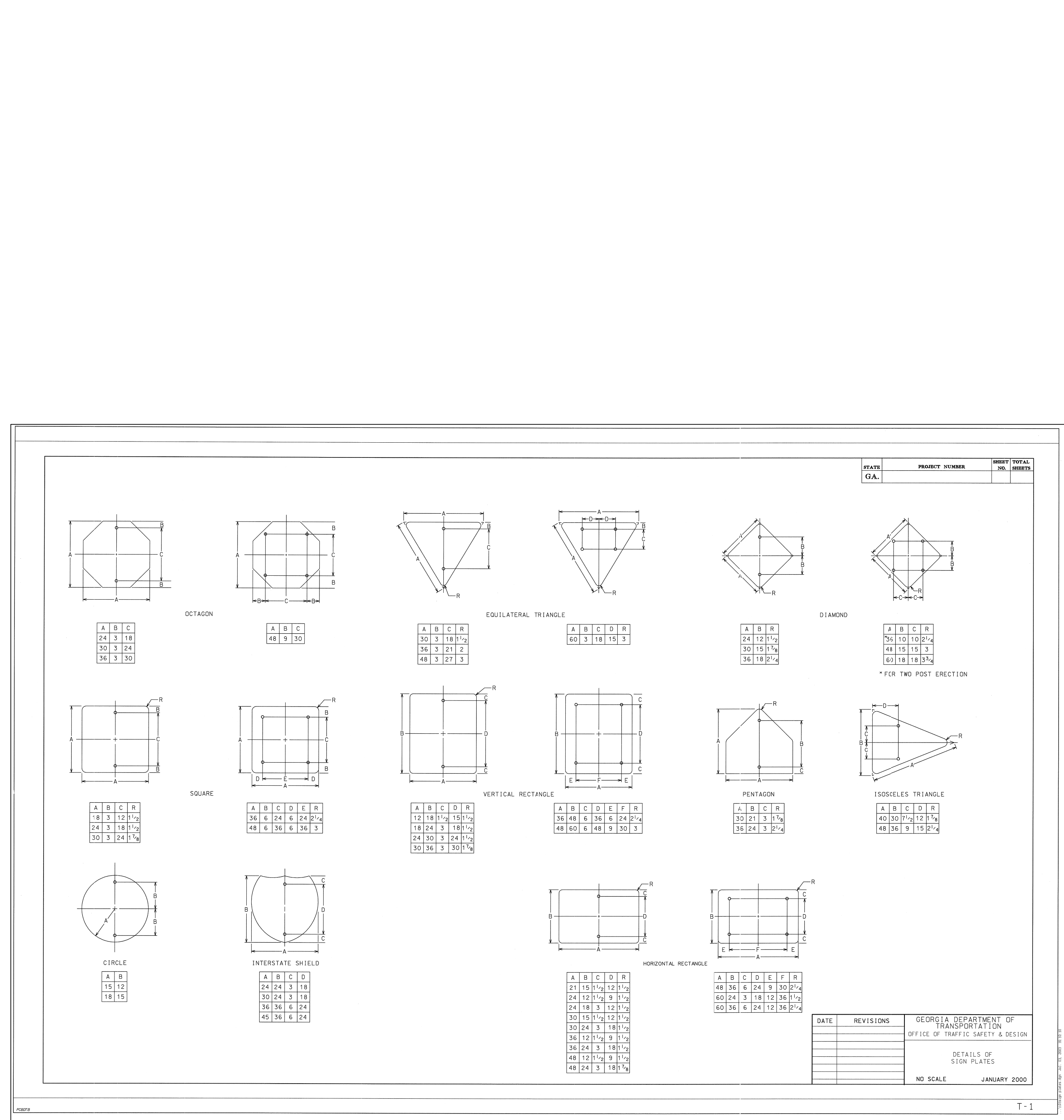
- GENERAL NOTES:**
1. ALL UNDERGROUND UTILITIES SHOULD BE CONSIDERED APPROXIMATE. "811" UTILITY LOCATES WERE NOTIFIED HOWEVER THEY REFUSED TO MARK ANY UTILITIES AS THIS WAS A DESIGN TICKET. THEREFORE LOCATIONS WERE TAKEN FROM PLANS BY OTHERS AND FIELD OBSERVATIONS. UTILITIES WILL REQUIRE FURTHER VERIFICATION AND COORDINATION WITH UTILITY COMPANIES PRIOR TO CONSTRUCTION AS DISCUSSED WITH OCONEE COUNTY.
 2. THE PROPOSED DESIGN PLANS ARE BASED ON IMPROVING SAFETY AND FUNCTIONALITY, GIVEN THE EXISTING CONSTRAINTS. IN THIS CASE, EXISTING MISALIGNED RIGHT-OF-WAYS, ROADWAY CENTERLINE INTERSECTIONS, SPEED LIMITS, UNDERGROUND AND OVERHEAD UTILITIES, GRADING ISSUES AND LACK OF RIGHT-OF-WAY MITERS CONTRIBUTED TO SAFETY & TRAFFIC ISSUES.
 3. COORDINATE ALL OVERHEAD POWER & UTILITIES AS REQUIRED FOR THE PROJECT & SIGNAL INSTALLATION.

N/F
 GOLDEN RULE PROPERTIES, LLC
 TP# C 01 037CA

N/F
 GOLDEN RULE PROPERTIES, LLC
 TP# C 01 037C

N/F
 MAGNOLIA ESTATES, INC
 TP# C 01AE 001

N/F
 BAXLEY, ROBERT
 TP# C 01 027A



COMPREHENSIVE ENGINEERING SERVICES
CIVIL ENGINEERING
LAND SURVEYING
LAND PLANNING
CONSTRUCTION STAKING
LANDSCAPE ARCHITECTURE
SOIL MAPPING & SEPTIC SYSTEMS
WETLAND & ENVIRONMENTAL MONITORING

2410 HOG MOUNTAIN ROAD
SUITE 103
WATKINSVILLE, GA 30677
706-613-8900
706-425-9631 (FAX)
abe@abeconsultinginc.com
www.ABEconsultinginc.com

COPYRIGHT © 2013 ABE CONSULTING, INC. RESERVES COPYRIGHT AND OTHER RIGHTS TO THE STRICT USE OF THESE DOCUMENTS FOR THE ORIGINAL PROJECT FOR WHICH THEY WERE PREPARED. ANY CHANGES OR ALTERATIONS MADE TO THESE CONSTRUCTION DRAWINGS WITHOUT THE WRITTEN APPROVAL OF ABE CONSULTING, INC. VIOLATES THE SEAL, OATH, HONOR AND ANY LIABILITY ASSOCIATED WITH THIS PROJECT. THE ORIGINAL DRAWINGS ARE KEPT ON FILE FOR VERIFICATION OF ANY CHANGES, REPRODUCTIONS, MODIFICATIONS, OR ASSIGNMENTS ARE STRICTLY PROHIBITED.

MARS HILL, VIRGIL LANGFORD & ROCKY BRANCH ROADS IMPROVEMENTS

MARS HILL ROAD, VIRGIL LANGFORD & ROCKY BRANCH ROADS
OCONEE COUNTY, GEORGIA

TRAFFIC SIGNAL DETAILS

2-27-17

REVISIONS	DATE
ADDED TRAFFIC SIGNAL & SIGNAGE	2-22-17
ADDED LOOPS & PHASING	2-27-17

DATE: 8-29-16

PROJECT #: 09-021-11

GRAPHIC SCALE
0' 10' 20' 40' 60'
SCALE: 1"=20'

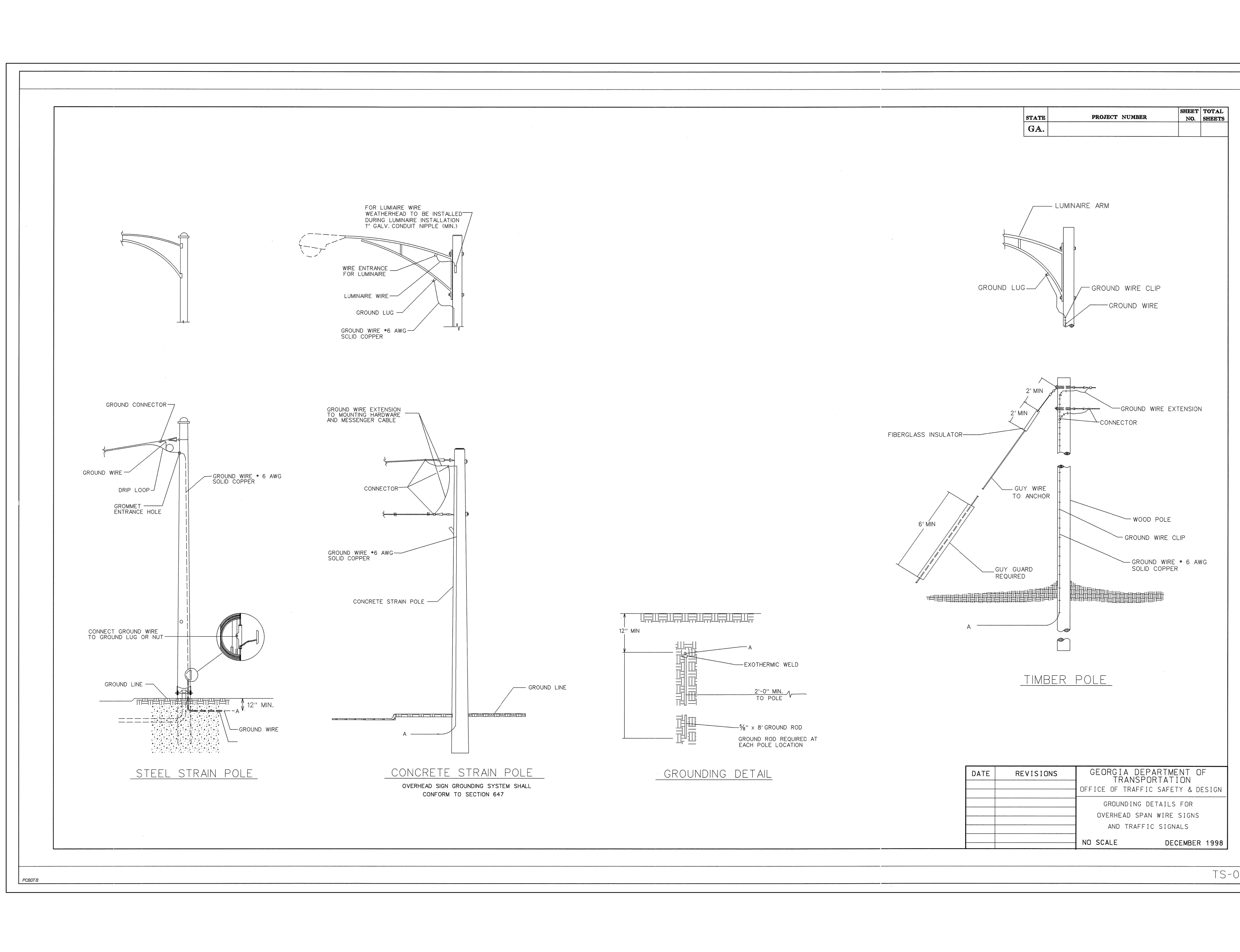
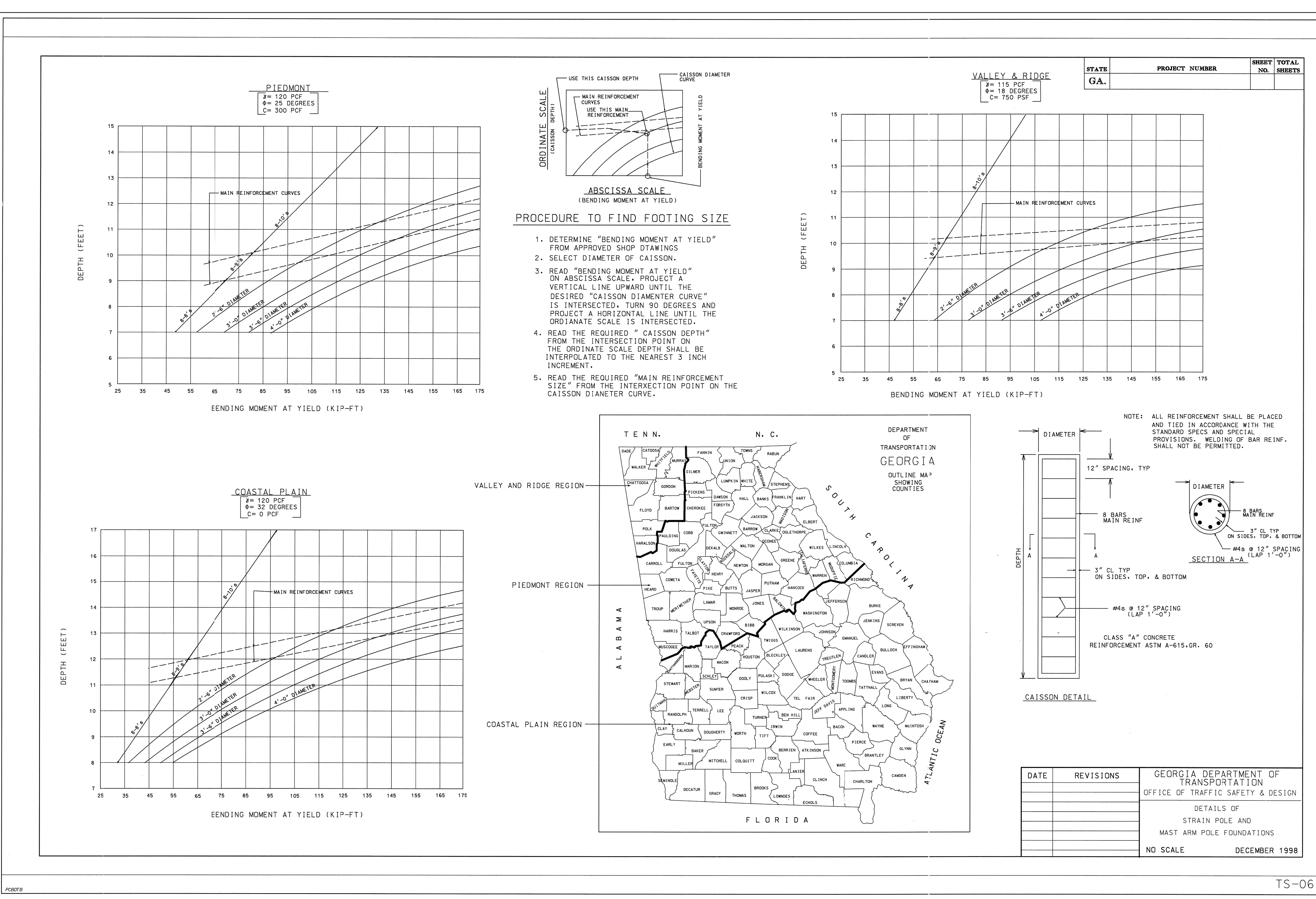
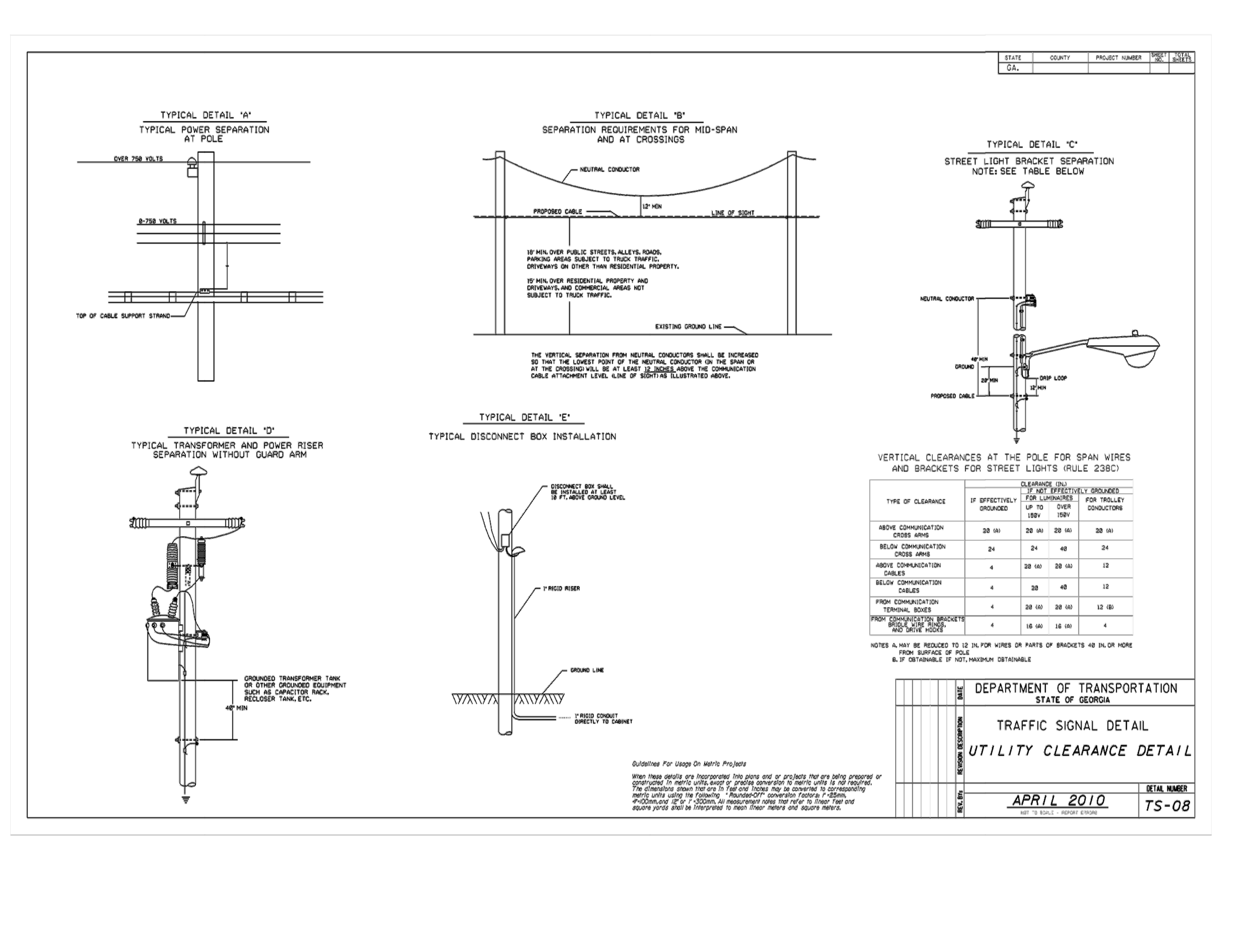
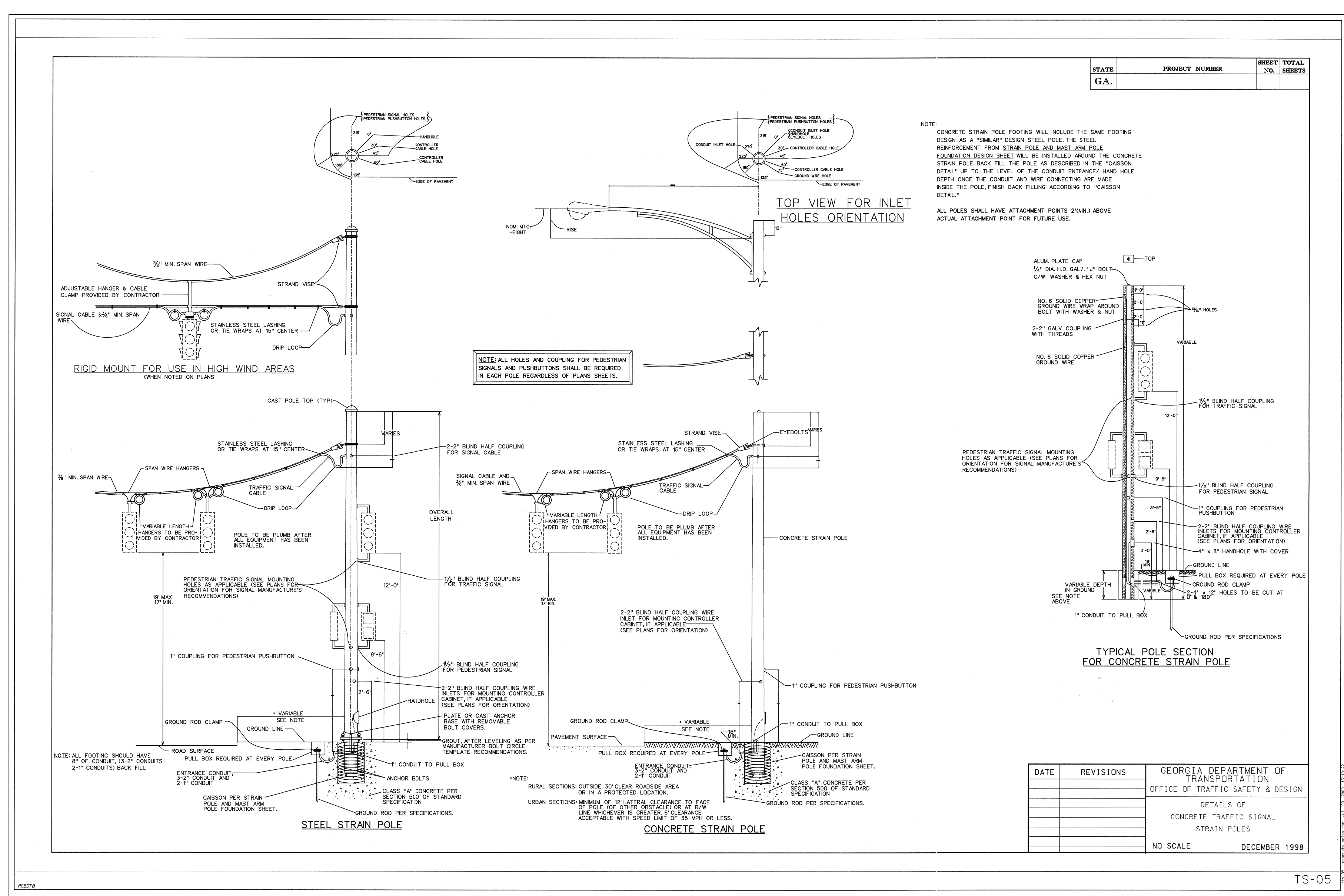
SHEET #
3C
9

GRID=NAD83 GA WEST

81

Know what's below. Call before you dig.

LEGEND FOR UTILITY LOCATING:
White = Prop. Excavation
Pink = Temp. Survey Markings
Red = Electric
Yellow = Gas/Oil
Orange = Phone/Cable
Blue = Water
Purple = Reclaimed Water
Green = Sewer



CONSULTING INC.

COMPREHENSIVE ENGINEERING SERVICES
CIVIL ENGINEERING
LAND SURVEYING
LAND PLANNING
CONSTRUCTION STAKING
LANDSCAPE ARCHITECTURE
SOIL MAPPING & SEPTIC SYSTEMS
WETLAND & ENVIRONMENTAL MONITORING

2410 HOG MOUNTAIN ROAD
SUITE 103
WATKINSVILLE, GA 30677
706-613-8900
706-425-9631 (FAX)
abe@ABEconsultinginc.com
www.ABEconsultinginc.com

COPYRIGHT © 2013 ABE CONSULTING, INC. RESERVES ALL RIGHTS TO THE STRICT USE OF THESE DOCUMENTS FOR THE ORIGINAL PROJECT FOR WHICH THEY WERE PREPARED. ANY CHANGES OR ALTERATIONS MADE TO THESE CONSTRUCTION DRAWINGS WITHOUT THE WRITTEN APPROVAL OF ABE CONSULTING, INC. VIOLATES THE SEAL, SIGNATURE AND ANY LIABILITY ASSOCIATED WITH THIS PROJECT. THE ORIGINAL DRAWINGS ARE KEPT ON FILE FOR VERIFICATION OF ANY CHANGES, REPRODUCTIONS, AMENDMENTS, OR ASSIGNMENTS ARE STRICTLY PROHIBITED.

MARS HILL, VIRGIL LANGFORD & ROCKY BRANCH ROADS IMPROVEMENTS

MARS HILL ROAD, VIRGIL LANGFORD & ROCKY BRANCH ROADS
OCONEE COUNTY, GEORGIA

TRAFFIC SIGNAL DETAILS

REVISIONS

REVISIONS	DATE
ADDED TRAFFIC SIGNAL & SIGNAGE	2-22-17
ADDED LOOPS & PHASING	2-27-17

DATE: 8-29-16

PROJECT #: 09-021-11

GRAPHIC SCALE
0' 10' 20' 40' 60'
SCALE: 1"=20'

SHEET #
3D
9

GRID-NAD83 GA WEST

81

Know what's below.
Call before you dig.

COLORS FOR UTILITY LOCATING:
White = Prop. Excavation
Pink = Temp. Survey Markings
Red = Electric
Yellow = Gas/Oil
Orange = Phone/Cable
Blue = Water
Purple = Reclaimed Water
Green = Sewer



COMPREHENSIVE ENGINEERING SERVICES
CIVIL ENGINEERING
LAND SURVEYING
LAND PLANNING
CONSTRUCTION STAKING
LANDSCAPE ARCHITECTURE
SOIL MAPPING & SEPTIC SYSTEMS
WETLAND & ENVIRONMENTAL MONITORING

2410 HOG MOUNTAIN ROAD
 SUITE 103
 WATKINSVILLE, GA 30677
 706-613-8900
 706-425-9631 (FAX)
 abe@abeconsultinginc.com
 www.abeconsultinginc.com

COPYRIGHT © 2013 ABE CONSULTING, INC. RESERVES ALL RIGHTS TO THE STRICT USE OF THESE DOCUMENTS FOR THE ORIGINAL PROJECT FOR WHICH THEY WERE PREPARED. ANY CHANGES OR ALTERATIONS MADE TO THESE CONSTRUCTION DRAWINGS WITHOUT THE WRITTEN APPROVAL OF ABE CONSULTING, INC. VIOLATES THE SEAL, SIGNATURE AND ANY LIABILITY ASSOCIATED WITH THIS PROJECT. THE ORIGINAL DRAWINGS ARE KEPT ON FILE FOR VERIFICATION OF ANY CHANGES, REPRODUCTIONS, MODIFICATIONS, OR ASSIGNMENTS ARE STRICTLY PROHIBITED.

MARS HILL, VIRGIL LANGFORD & ROCKY BRANCH ROADS IMPROVEMENTS

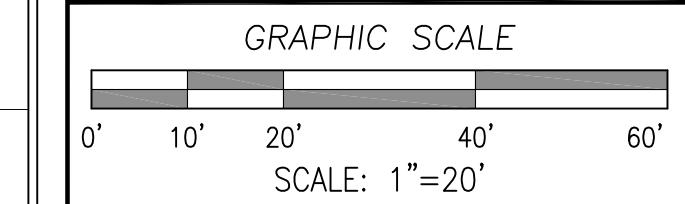
MARS HILL ROAD, VIRGIL LANGFORD & ROCKY BRANCH ROADS
 OCONEE COUNTY, GEORGIA

TRAFFIC SIGNAL & PAVEMENT MARKING DETAILS



REVISIONS	DATE
ADDED TRAFFIC SIGNAL & SIGNAGE	2-22-17
ADDED LOOPS & PHASING	2-27-17

DATE: 8-29-16
 PROJECT #: 09-021-11



SHEET #
3E
 9

GRID=NAD83 GA WEST

81
 Know what's below. Call before you dig.

DEPARTMENT OF TRANSPORTATION
 STATE OF GEORGIA

STANDARD CONCRETE CURB & GUTTER CONCRETE CURBS, CONCRETE MEDIANS

SCALE: AS SHOWN
 REVISION: 9032B

DATE: 09/21/11
 DRAWN BY: [Signature]
 CHECKED BY: [Signature]
 APPROVED BY: [Signature]

STATE: GA. PROJECT NUMBER: SHEET TOTAL: 10 SHEETS

PAVEMENT MARKING, ARROW, TYPE 1 (12.0 SQ. FT.)
 PAVEMENT MARKING, ARROW, TYPE 2 (16.0 SQ. FT.)
 PAVEMENT MARKING, ARROW, TYPE 3 (28.5 SQ. FT.)
 PAVEMENT MARKING, ARROW, TYPE 4 (64.5 SQ. FT.)
 PAVEMENT MARKING, ARROW, WINDING WAY (64.5 SQ. FT.)
 PAVEMENT MARKING, ARROW, TYPE 5 (25.5 SQ. FT.)
 PAVEMENT MARKING, ARROW, TYPE 6 (42.0 SQ. FT.)
 PAVEMENT MARKING, ARROW, TYPE 7 (26.0 SQ. FT.)

ARROW WHITE POLYURETHANE PAINT PERMANENTLY AS SPECIFIED BY GEORGIA STANDARD SPECIFICATIONS, SECTION 605.

DATE: 01/01/00 REVISIONS: GEORGIA DEPARTMENT OF TRANSPORTATION OFFICE OF TRAFFIC SAFETY & DESIGN
 DETAILS OF PAVEMENT MARKING-ARROWS
 NO SCALE JANUARY 2000

T-12B

STATE: GA. PROJECT NUMBER: SHEET TOTAL: 10 SHEETS

TYPE 1 AREA = 20.8 FT²
 TYPE 2 AREA = 25.4 FT²
 TYPE 1S AREA = 25.4 FT²
 TYPE 3A (SINGLE LANE) AREA = 33.5 FT²
 TYPE 4 AREA = 29.1 FT²
 TYPE 5 AREA = 25.4 FT²
 TYPE 6 AREA = 38.1 FT²
 TYPE 3B (TWO LANES) AREA = 85.0 FT²

DATE: 01/01/00 REVISIONS: GEORGIA DEPARTMENT OF TRANSPORTATION OFFICE OF TRAFFIC SAFETY & DESIGN
 DETAILS OF PAVEMENT MARKING WORDS
 NO SCALE JANUARY 2000

T-13A

STATE: GA. PROJECT NUMBER: SHEET TOTAL: 10 SHEETS

DETAIL "A" (YELLOW)
 DETAIL "B" (YELLOW)
 DETAIL "C" (YELLOW)
 DETAIL "D" (YELLOW)

DETAIL "A" (WHITE)
 DETAIL "B" (WHITE)
 DETAIL "C" (WHITE)
 DETAIL "D" (WHITE)

GENERAL NOTES:
 1. FOR YELLOW STRIPING, THE SQUARE YARDS SHOWN ON PLAN, SUMMARY AND DETAILED ESTIMATE SHEETS INCLUDES THE AREA WITHIN THE BORDERS. THE 8" SOLID DOUBLE YELLOW BORDERS SHALL BE SUMMARIZED AND PAID FOR SEPARATELY.
 2. FOR WHITE STRIPING, THE SQUARE YARDS SHOWN ON PLAN, SUMMARY AND DETAILED ESTIMATE SHEETS INCLUDES THE AREA WITHIN THE BORDERS AS WELL AS THE 8" SOLID WHITE BORDER.

DATE: 01/01/00 REVISIONS: GEORGIA DEPARTMENT OF TRANSPORTATION OFFICE OF TRAFFIC SAFETY & DESIGN
 DETAILS OF PAVEMENT MARKING HATCHING
 NO SCALE JANUARY 2000

T-14

STATE: GA. PROJECT NUMBER: SHEET TOTAL: 10 SHEETS

CONCRETE CURB & GUTTER (TYPE 7)
 RAISED EDGE WITH CONCRETE GUTTER (SCALE: 1/4"=1 FT.)
 CONCRETE MEDIAN (Between Curbs) (TYPE 1)
 CONCRETE MEDIAN (Integral) (TYPE 2, 3, 4)
 CONCRETE HEADER CURB (TYPE 7)
 CONCRETE DOWELED INTEGRAL CURBS (TYPE 1, 2, 3, 4)
 DETAILS OF RECESSED CURB (SCALE: 1/4"=1 FT.)
 CONCRETE INTEGRAL CURB (TYPE 7)
 STANDARD CURB FACE DESIGN (TYPE 1, 2, 3 OR 4)

NOTES:
 *1. CONTRACTOR'S OPTION: THE GUTTER THICKNESS MAY BE INCREASED AT EDGE OF PAVEMENT TO MATCH BOTTOM OF GUTTER PARALLEL WITH PAVING OR BASE COURSE, BUT THE GUTTER THICKNESS MUST NOT BE LESS THAN THE SPECIFIED 6" OR 8" AT ANY POINT.
 *2. CONTRACTOR'S OPTION: THE GUTTER THICKNESS MAY BE INCREASED AT EDGE OF PAVEMENT TO MATCH BOTTOM OF GUTTER PARALLEL WITH PAVING OR BASE COURSE, BUT THE GUTTER THICKNESS MUST NOT BE LESS THAN THE SPECIFIED 6" OR 8" AT ANY POINT.
 *3. CONTRACTOR'S OPTION: THE GUTTER THICKNESS MAY BE INCREASED AT EDGE OF PAVEMENT TO MATCH BOTTOM OF GUTTER PARALLEL WITH PAVING OR BASE COURSE, BUT THE GUTTER THICKNESS MUST NOT BE LESS THAN THE SPECIFIED 6" OR 8" AT ANY POINT.

DATE: 01/01/00 REVISIONS: GEORGIA DEPARTMENT OF TRANSPORTATION OFFICE OF TRAFFIC SAFETY & DESIGN
 STANDARD CONCRETE CURB & GUTTER CONCRETE CURBS, CONCRETE MEDIANS
 NO SCALE JANUARY 2000