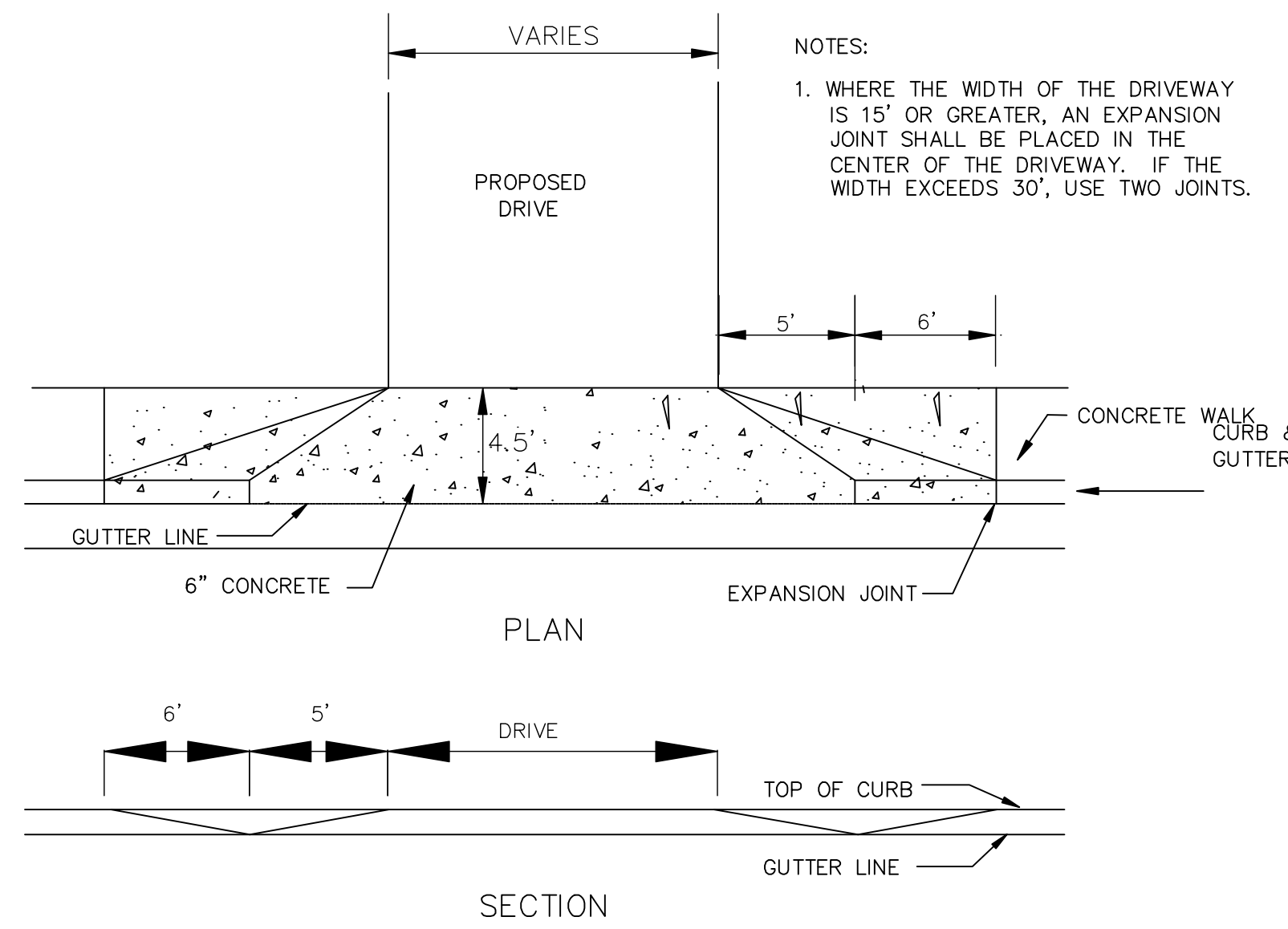
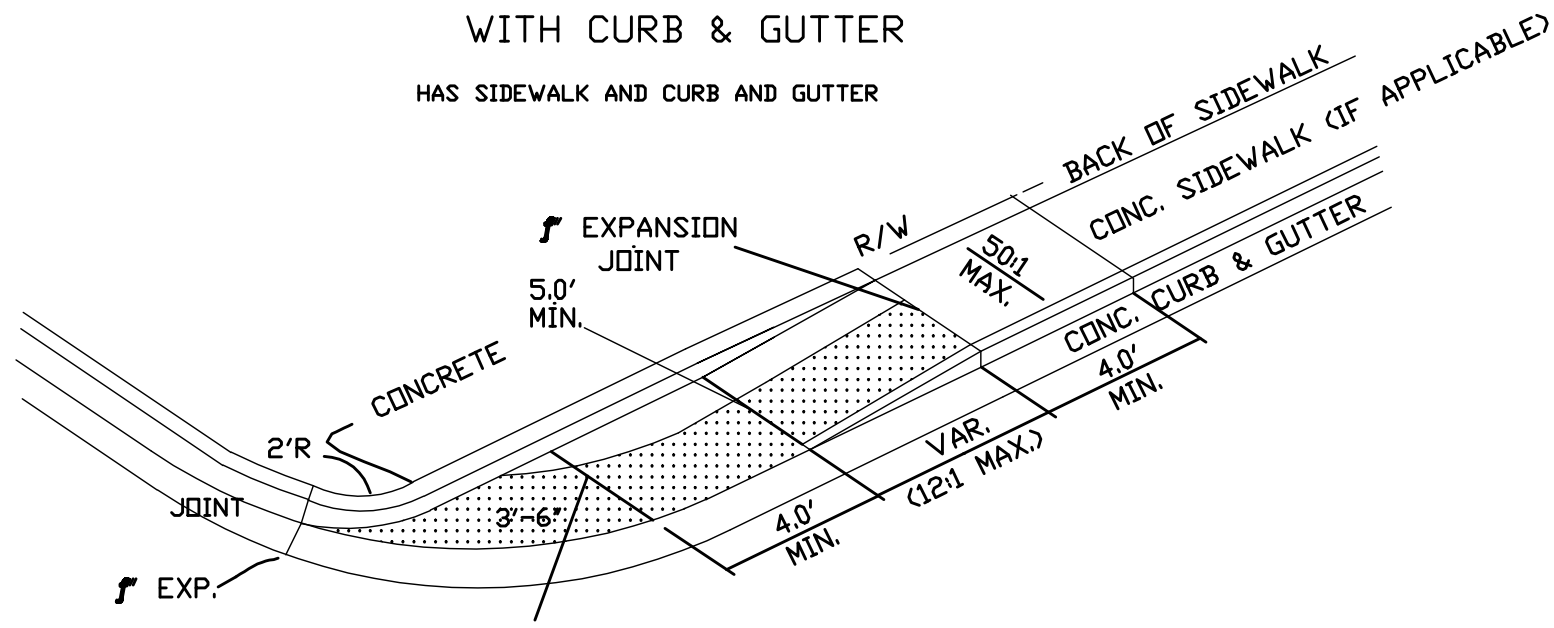
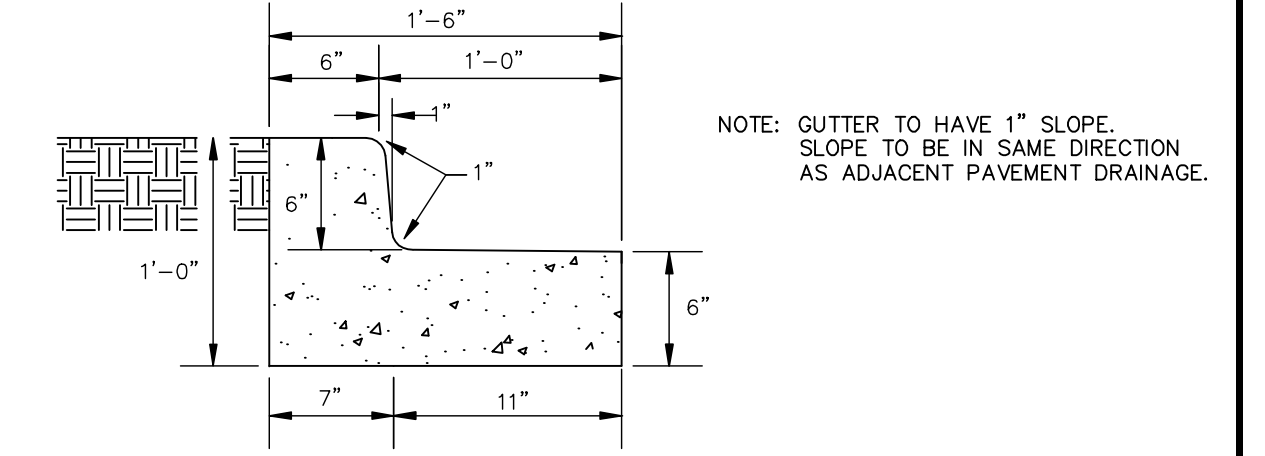


SINGLE SIDEWALK AT INTERSECTION WITH CURB & GUTTER
HAS SIDEWALK AND CURB AND GUTTER



NOTES:
1. WHERE THE WIDTH OF THE DRIVEWAY IS 15' OR GREATER, AN EXPANSION JOINT SHALL BE PLACED IN THE CENTER OF THE DRIVEWAY. IF THE WIDTH EXCEEDS 30', USE TWO JOINTS.

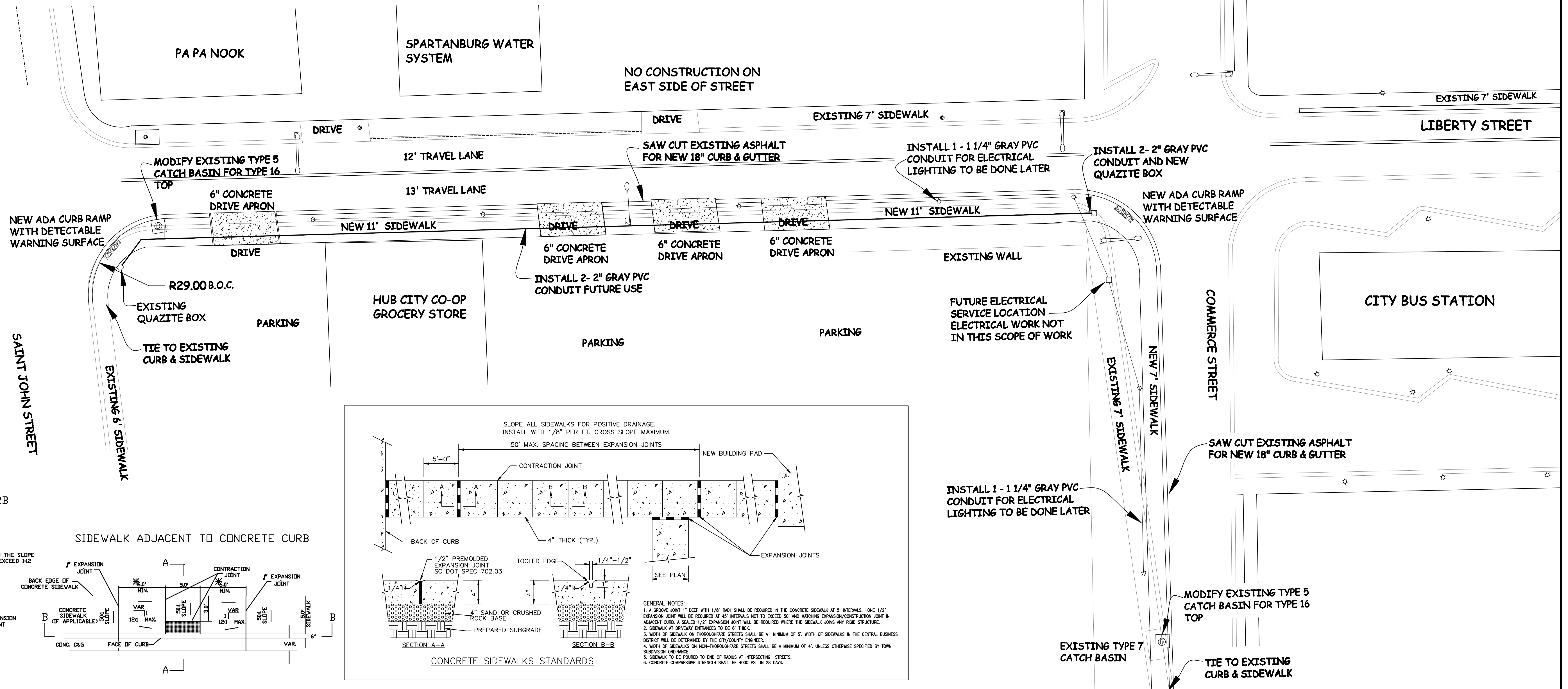
NOTES:
1. ALL WORK SHALL CONFORM TO THE LATEST SPECIFICATIONS BY SCDOT STANDARDS FOR CONSTRUCTION.
2. ALL ASPHALT PATCHING, PAVEMENT MARKINGS, ELECTRICAL, AND LANDSCAPING WILL BE DONE BY THE CITY OF SPARTANBURG



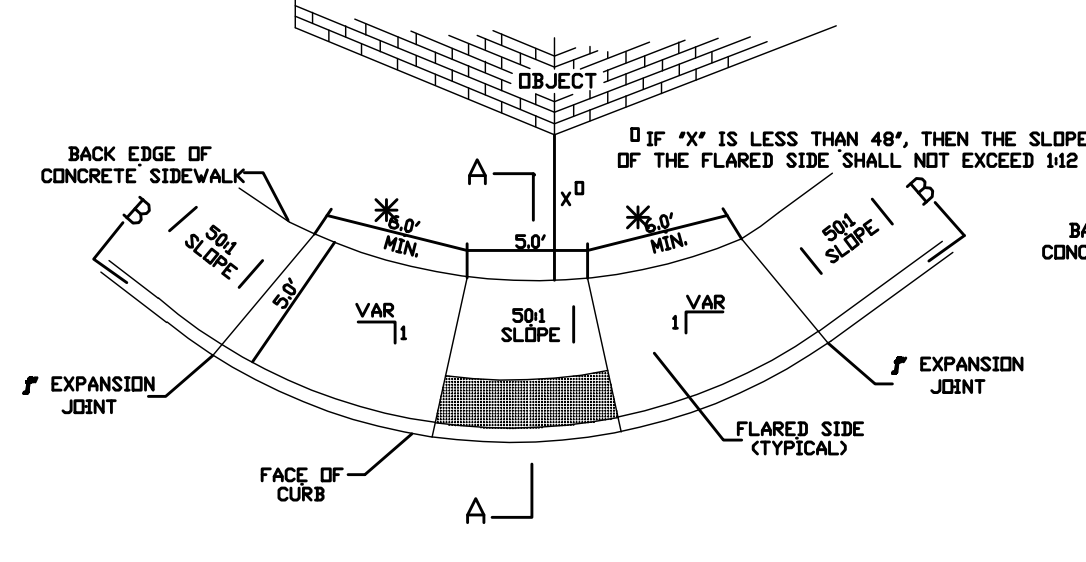
CURB AND GUTTER SECTION

NOTE: GUTTER TO HAVE 1" SLOPE. SLOPE TO BE IN SAME DIRECTION AS ADJACENT PAVEMENT DRAINAGE.

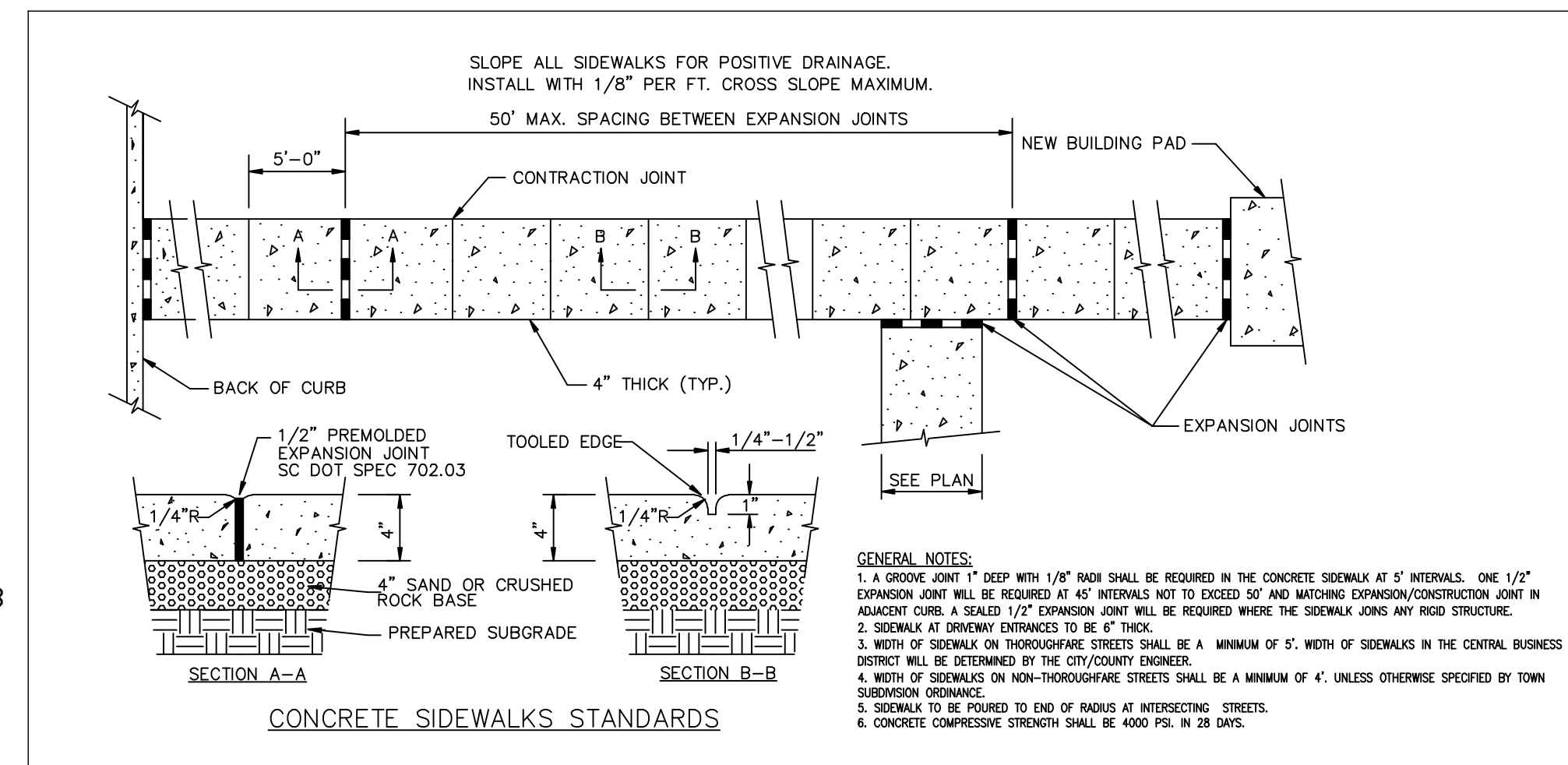
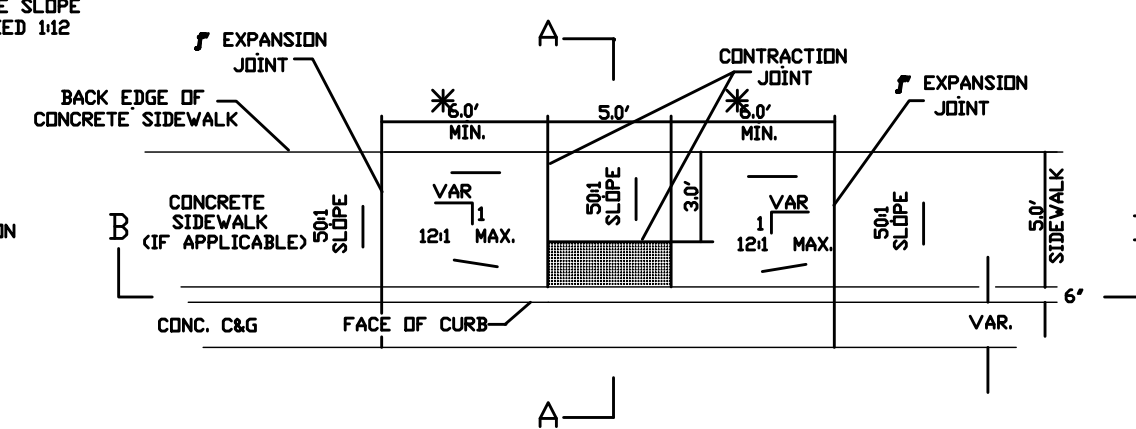
ENTRANCE DETAIL



SIDEWALK ADJACENT TO CONCRETE CURB ON RADIUS



SIDEWALK ADJACENT TO CONCRETE CURB



GENERAL NOTES:
1. A GROOVE JOINT 1" DEEP WITH 1/8" RAKE SHALL BE REQUIRED IN THE CONCRETE SIDEWALK AT 5' INTERVALS. ONE 1/2" EXPANSION JOINT WILL BE REQUIRED AT 45' INTERVALS NOT TO EXCEED 50' AND BEFORE EXPANSION/CONSTRUCTION JOINT IN ADJACENT CURB. A SEALED 1/2" EXPANSION JOINT WILL BE REQUIRED WHERE THE SIDEWALK JOINS ANY ROAD STRUCTURE.
2. SIDEWALK AT DRIVEWAY ENTRANCES TO BE 6" THICK.
3. WIDTH OF SIDEWALK ON THROUGHFARE STREETS SHALL BE A MINIMUM OF 5'. WIDTH OF SIDEWALKS IN THE CENTRAL BUSINESS DISTRICT WILL BE DETERMINED BY THE CITY/COUNTY ENGINEER.
4. WIDTH OF SIDEWALKS ON NON-THROUGHFARE STREETS SHALL BE A MINIMUM OF 4'. UNLESS OTHERWISE SPECIFIED BY TOWN SUBDIVISION ORDINANCE.
5. SIDEWALK TO BE POURED TO END OF RADIUS AT INTERSECTING STREETS.
6. CONCRETE COMPRESSIVE STRENGTH SHALL BE 4000 PSI IN 28 DAYS.

Drawn By	T CARTER	2
Checked By		
App'd By		
Date	6/15/18	

CITY OF SPARTANBURG ENGINEERING DIVISION

N. LIBERTY STREET STREETScape PROJECT
PROPOSED IMPROVEMENTS DRAWING

Project No.	Dwg. No.
	2
Scale:	of
1" = 20'	