



Addendum No. 4

Date of Addendum Issuance: May 10, 2021

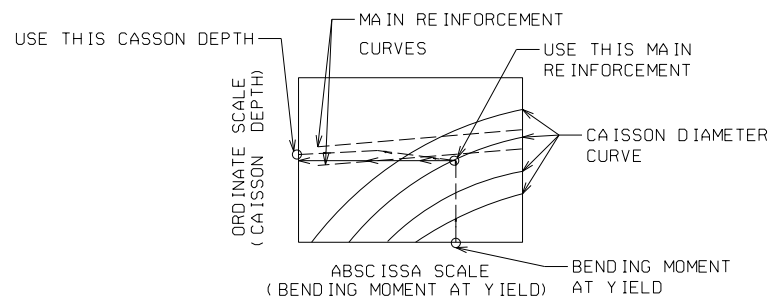
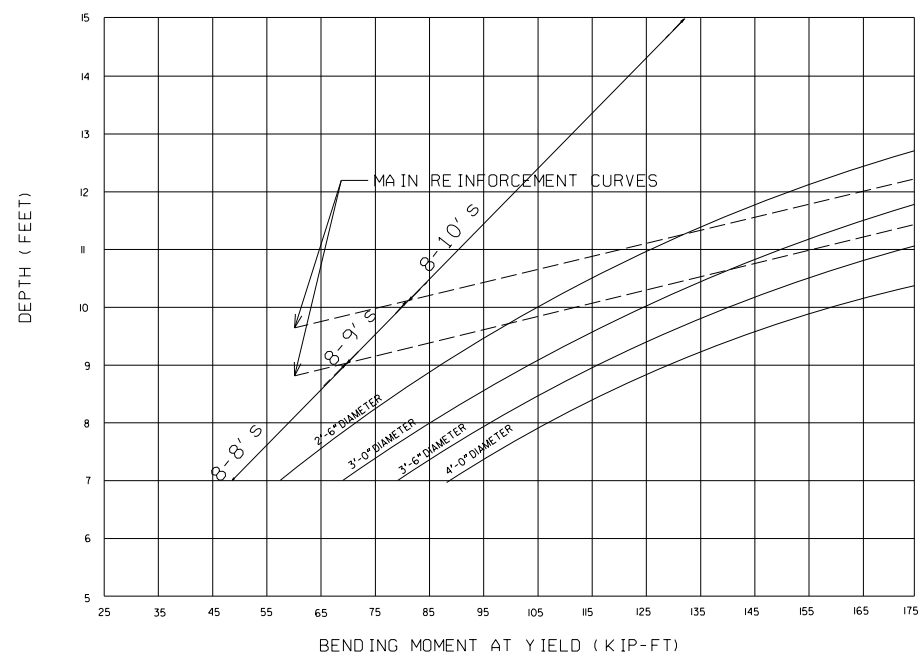
Project: SR 44 @ SCOTT ROAD TRAFFIC SIGNAL INSTALLATION

Bid Item #: 21-42001-002

Beginning on 4/16/2021, the following GDOT 2021 Specification for **Strain Pole and Mast Arm Foundations**, which was adopted by GDOT on March 19th, 2021, shall be applicable to all projects on state right-of-way. This new specification shall replace the details on the Signal Plan included in the ITB

PIEDMONT

$\gamma = 120$ PCF
 $\phi = 25$ DEGREES
 $C = 300$ PCF

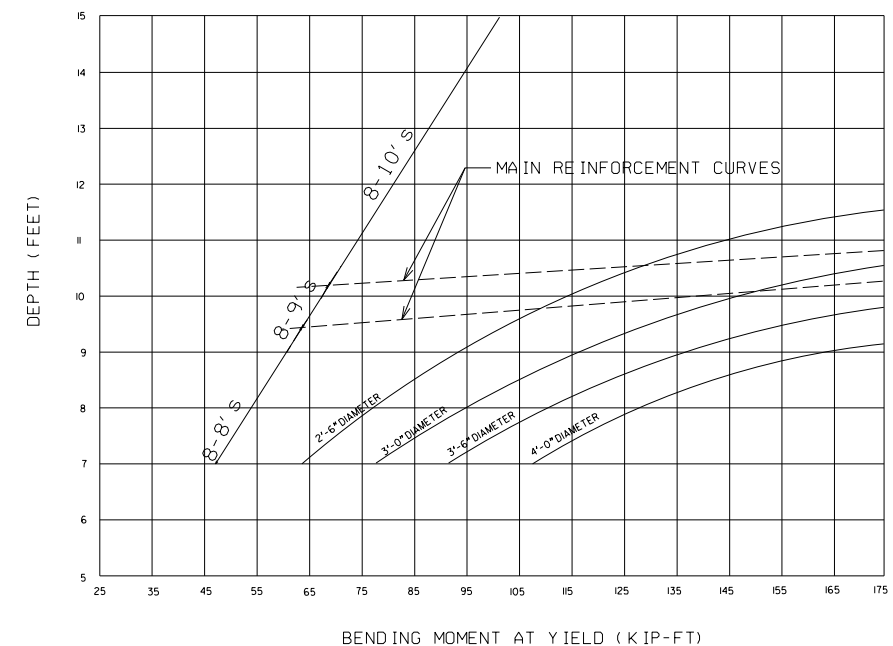


PROCEDURE TO FIND FOOTING SIZE

1. DETERMINE "BENDING MOMENT AT YIELD" FROM APPROVED SHOP DRAWINGS.
2. SELECT DIAMETER OF CAISSON.
3. READ "BENDING MOMENT AT YIELD" ON ABSCISSA SCALE, PROJECT A VERTICAL LINE UPWARD UNTIL THE DESIRED "CAISSON DIAMETER CURVE" IS INTERSECTED, TURN 90 DEGREES AND PROJECT A HORIZONTAL LINE UNTIL THE ORDINATE SCALE IS INTERSECTED.
4. READ THE REQUIRED "CAISSON DEPTH" FROM THE INTERSECTION POINT ON THE ORDINATE SCALE DEPTH SHALL BE INTERPOLATED TO THE NEAREST 3 INCH INCREMENT.
5. READ THE REQUIRED "MAIN REINFORCEMENT SIZE" FROM THE INTERSECTION POINT ON THE CAISSON DIAMETER CURVE.

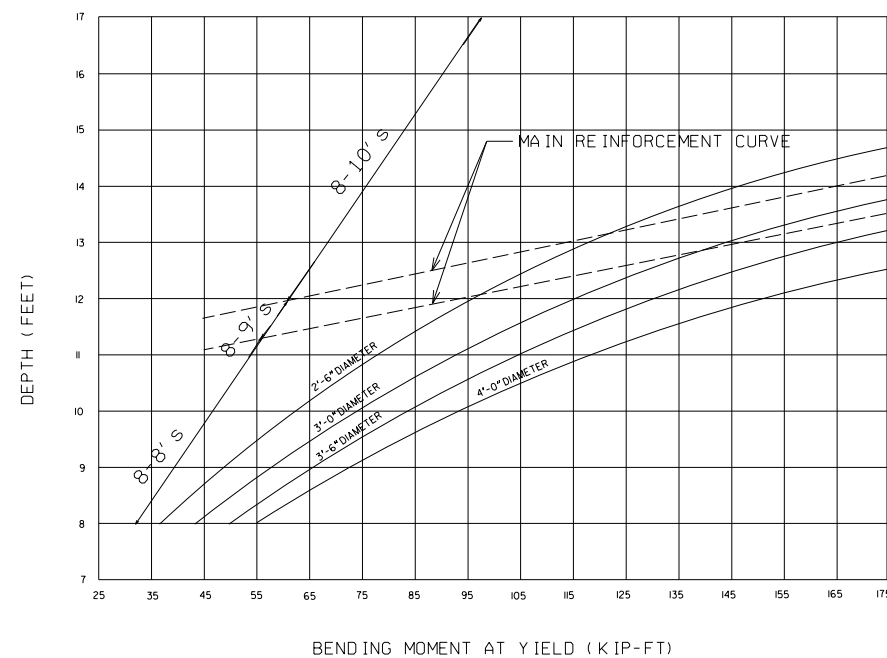
VALLEY & RIDGE

$\gamma = 115$ PCF
 $\phi = 18$ DEGREES
 $C = 750$ PSF



COASTAL PLAIN

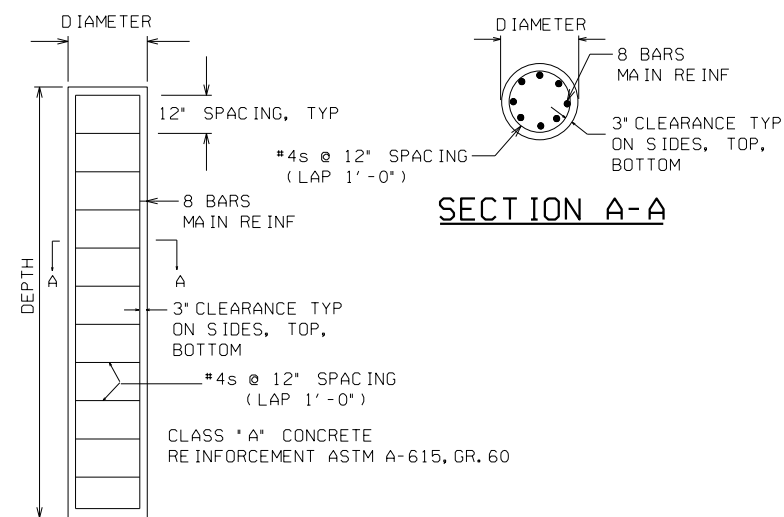
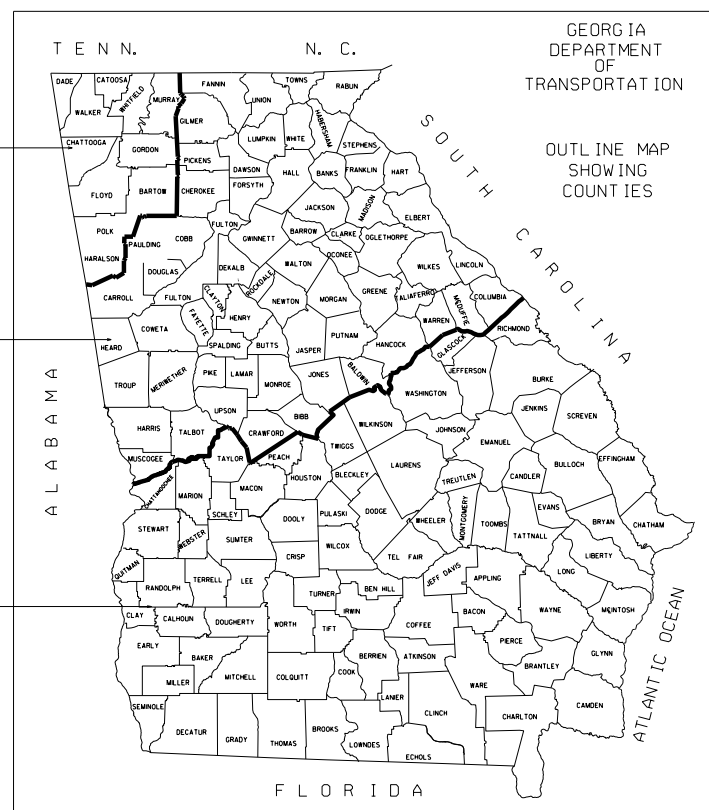
$\gamma = 120$ PCF
 $\phi = 32$ DEGREES
 $C = 0$ PCF



VALLEY AND RIDGE REGION

PIEDMONT REGION

COASTAL PLAIN REGION



NOTE:
 ALL REINFORCEMENT SHALL BE PLACED AND TIED IN ACCORDANCE WITH THE STANDARD SPECS AND SPECIAL PROVISIONS. WELDING OF BAR REINFORCEMENT SHALL NOT BE PERMITTED.

DEPARTMENT OF TRANSPORTATION STATE OF GEORGIA	
CONSTRUCTION DETAIL	
STRAIN POLE AND MAST ARM FOUNDATIONS	
NOVEMBER 2020 NO SCALE	NUMBER TS-05