

## **REQUEST FOR BIDS**

*Sealed bids will be received at the office of the Purchasing Director, City of Goodlettsville, 105 South Main Street, Goodlettsville, Tennessee 37072, until 2:00 P.M., Thursday, March 3, 2016 at which time they will be opened for the following:*

***Labor & Material  
NorthCreek Boulevard Tree Planting Project  
(26 European Hornbeams)***

*Specifications are available and on file at the office of the Purchasing Director and may be accessed from the City's website at [www.goodlettsville-tn.gov](http://www.goodlettsville-tn.gov).*

*The City of Goodlettsville reserves the right to reject any and all bids and to waive formalities.*

*The City of Goodlettsville does not discriminate on the basis of age, race, sex, color, national origin, religion or disability in admission to, access to, or operation of its programs, services or activities, nor does it discriminate in its hiring, employment or purchasing practices. Contact the city manager at (615) 851-2200 with questions, concerns, complaints and with requests for ADA accommodations.*

# **NORTHCREEK BOULEVARD TREE PLANTING PROJECT**

## **BID SPECIFICATIONS**

**Sealed bids will be received at the office of the Purchasing Director, City of Goodlettsville, 105 South Main Street, Goodlettsville, Tennessee 37072, until 2:00 P.M., Thursday, March 3, 2016 at which time they will be opened for the NorthCreek Boulevard Tree Planting Project.**

**The NorthCreek Boulevard Tree Planting Project shall consist of the following:**

- **26 European Hornbeams      2" Calipers**  
**\*Mandatory that trees are procured from a Tennessee Nursery**
- Top soil for mounding of plants
- Hardwood Mulch (Mulch shall be placed no less than 3"-4" in depth and not spread in a diameter no less than the entire planting area.)
- Installation – Installation must be completed by April 15, 2016. Installation is to be done in accordance to Tennessee Department of Agriculture, Forestry Division Tree Planting Guidelines (See Attached).
- Planting of the trees will be in the medians of NorthCreek Boulevard (See Attached).

## **Tree Planting Guidelines**

### **Tennessee Department of Agriculture, Forestry Division**

NOTE: TREES PLANTED USING A GRANT FROM THE DEPT OF AGRICULTURE FORESTRY DIVISION MUST FOLLOW THESE GUIDELINES.

In order to have a healthy tree in the future; the tree must be planted properly. The following are guidelines to assist you in planting your tree properly. Prior to planting remember to move the tree by the root ball or the container. Never grab it by the trunk.

1. **Digging the Hole:** The planting hole should be at least twice the width of the rootball or container to encourage the roots to grow into the surrounding soil. The sides of the planting hole should be sloped. The depth of the hole should be the same as the distance from the root flare of the tree to the bottom of the container or ball. Most trees have the root ball below the top of the ball or soil in the container, so digging a hole the same depth of the ball or soil in the container often results in planting the tree too deep. One can check the root flare depth by digging down next to the trunk to find the flare.
2. **Tree Preparations:** For container trees, remove the container. Place the root "ball" in the hole. Cut the circling roots in the outer part of the ball with 4 to 6 cuts, or gently pull the roots out of the ball and plant them in trenches leading away from the planting hole. (A planting hole does not have to be round.) For B&B trees, place the ball in the hole, then remove the rope around the trunk, and then reach down in the hole and cut away as much burlap as possible. Also, use wire cutters to remove as much of the wire basket as possible. This should be done after the tree is in its final position and ready to be back filled.
3. **Backfill:** Use the same soil that was taken out of the hole. If the soil is very poor and appears to need topsoil, increase the hole size and sparingly mix in some local topsoil (avoid using potting soil, peat moss, and soil amendments). Remove stones and other debris. Fill the hole halfway with backfill, then water. Finish filling the hole with the backfill and water again. Make sure to work the soil around the ball firmly to eliminate any air pockets. Also, make sure the tree is vertical and properly supported, but do not pack the soil around the trunk.
4. **Mulch:** The area around the tree should be mulched with woodchips, barkchips, or pine mulch. The mulch should be 3 to 4 inches thick and cover the entire planting area and beyond. The mulch needs to be placed in a donut or tire shape around the trunk of the tree. The mulch must be kept away from the trunk of the tree to keep insects away and prevent the trunk from being excessively wet. Mulch helps conserve soil moisture, reduces the competition from unwanted weeds, keeps lawn mowers and string trimmers from damaging the trunk, and moderates soil temperature extremes. ***Do not use sawdust, black plastic, or grass clippings as mulch. Do not make mulch volcanos.***
5. **Trunk Wraps:** Research indicates there are no benefits from using trunk wraps and it may encourage damaging insects or diseases.
6. **Staking:** Staking is not necessary if the tree has a proper size rootball and has not been pruned too high. Stakes may help prevent lawnmowers and string trimmers from damaging the tree. If staking is needed for support, attach them so the tree has some sway. **NEVER** leave wires or straps on the tree for more than one growing season.
7. **Fertilizing:** Generally new trees do not need fertilizers. Using the wrong product could damage the already reduced root system. Fertilize the first year only if a specific problem develops.
8. **Pruning:** Prune only the branches that are dead, broken or severely deformed during the first growing season. Buds produce hormones that stimulate root growth, so keep the removal of buds to a minimum.
9. **Timing for Planting:** The best time of year to plant your tree is November through March.
10. **Tree Size:** Trees 2 inch caliper or less are recommended unless a larger size is justified. Smaller trees recover from transplant shock and commence with normal growth more quickly.

9. Plant late fall or early Spring

10. Max 2" caliper unless justified

8. No top Pruning

7. No fertilizer the first year

Fertilizer  
15-15-15

5. No Tree Wrap

6. No staking unless absolutely necessary

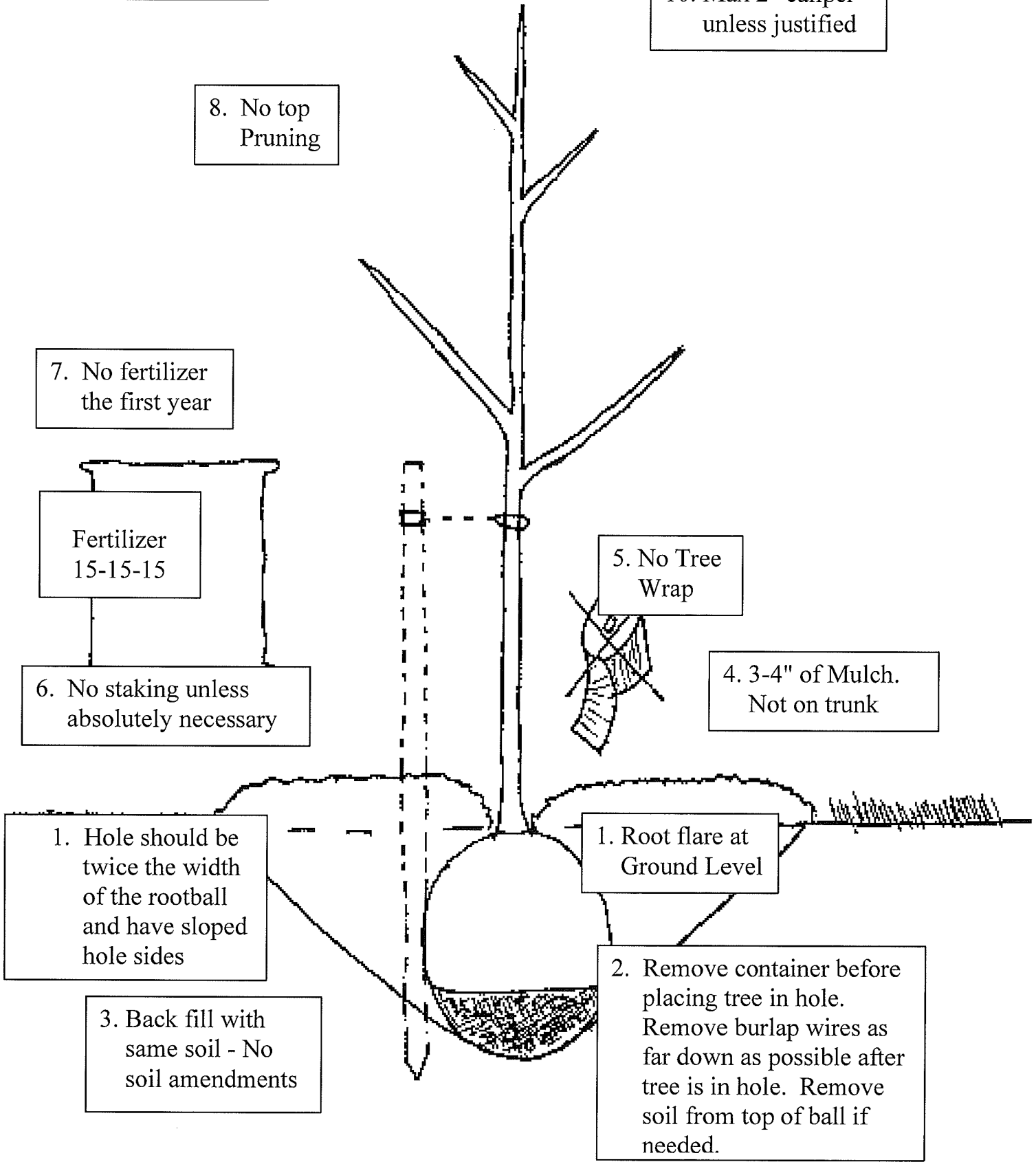
4. 3-4" of Mulch.  
Not on trunk

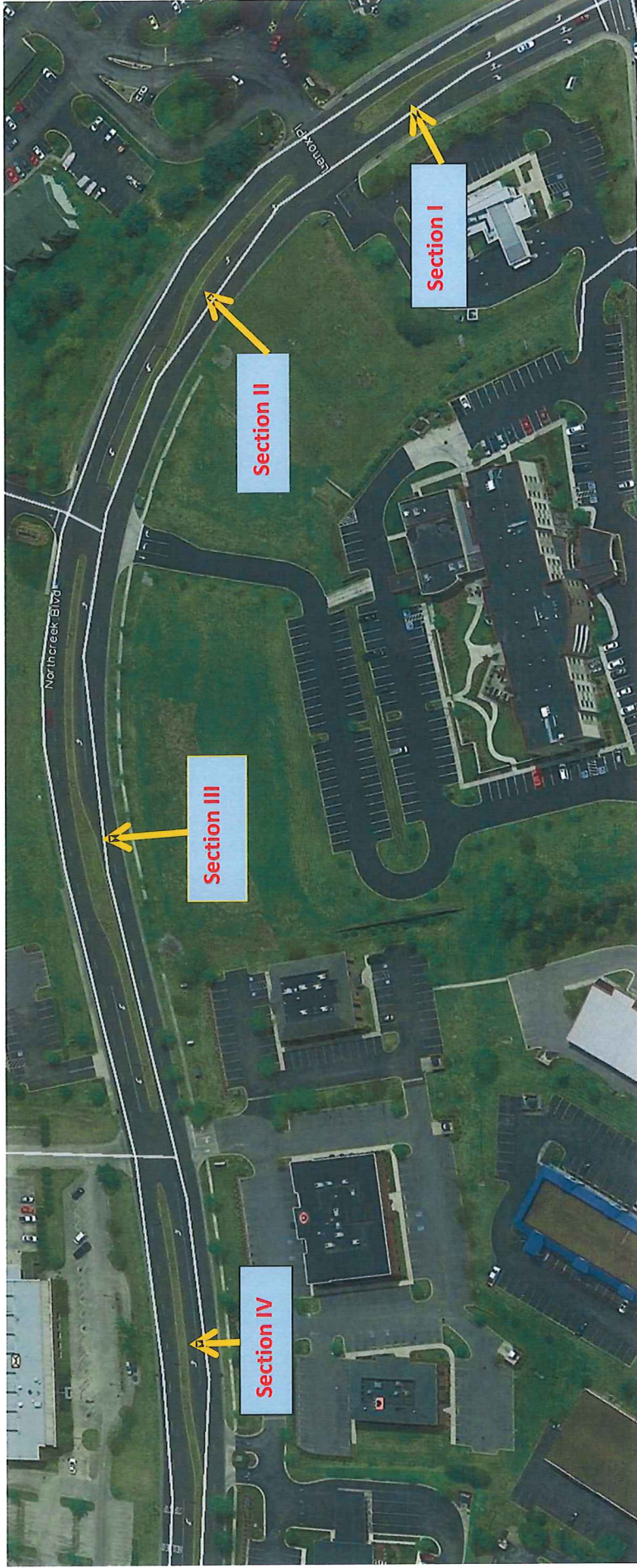
1. Hole should be twice the width of the rootball and have sloped hole sides

1. Root flare at Ground Level

3. Back fill with same soil - No soil amendments

2. Remove container before placing tree in hole. Remove burlap wires as far down as possible after tree is in hole. Remove soil from top of ball if needed.

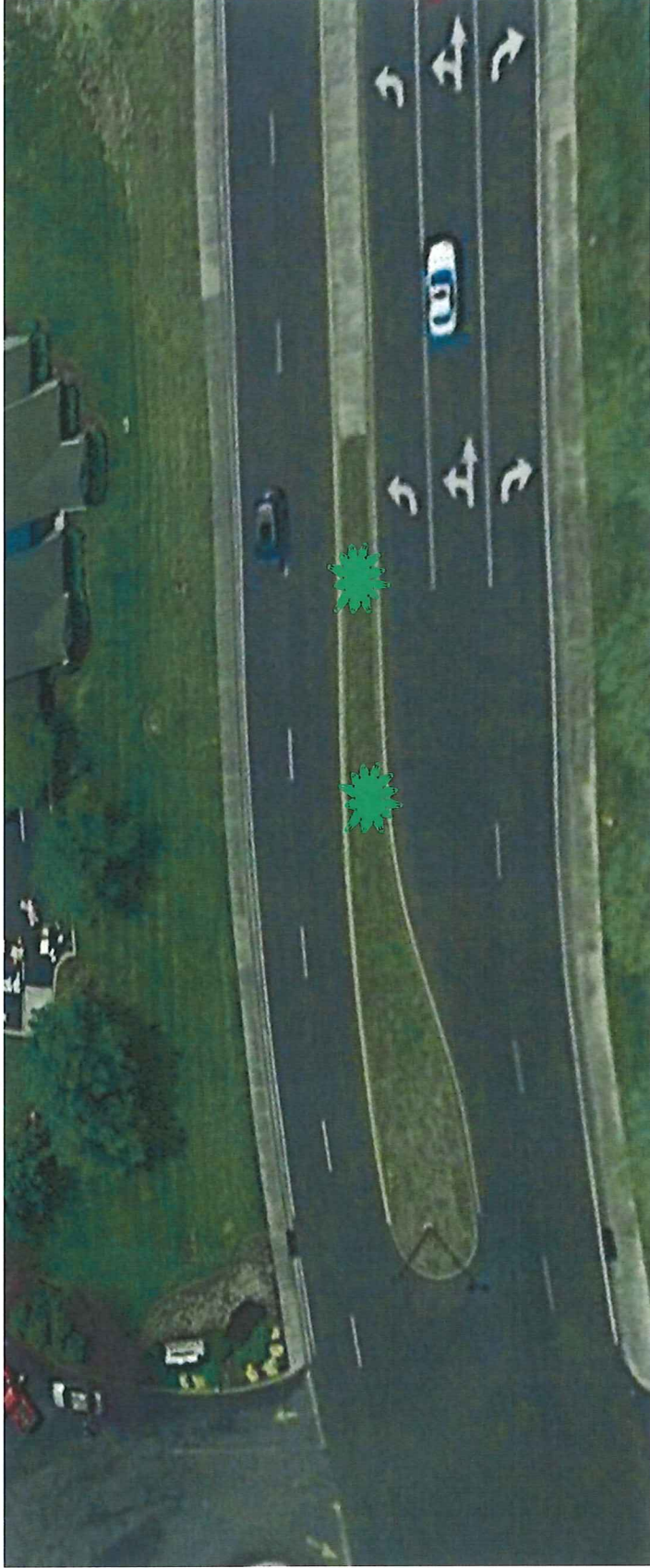




City of Goodlettsville, Tennessee

## NorthCreek Boulevard Tree Planting Project

*Project Boundary, Reference & Tree Planting Map*

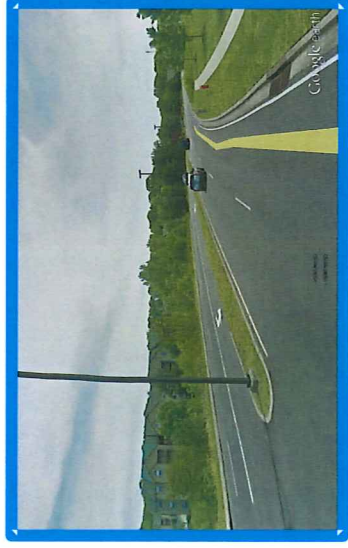


**SECTION I**

**Planting Layout Map**

160 Linear Feet – 2 Trees at 30' Intervals

pH: 7.3

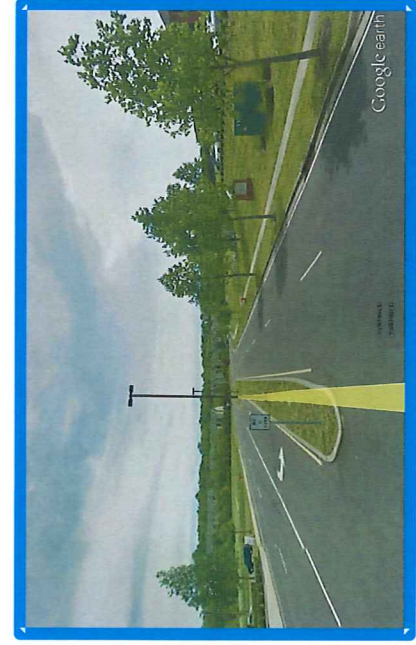


**SECTION II**

**Planting Layout Map**

362 Linear Feet – 6 Trees at 30' Intervals

pH: 7.3



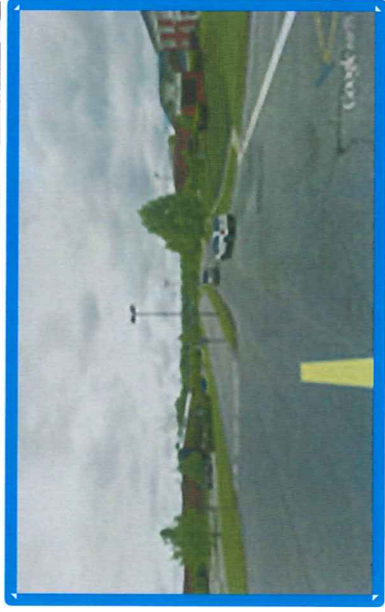
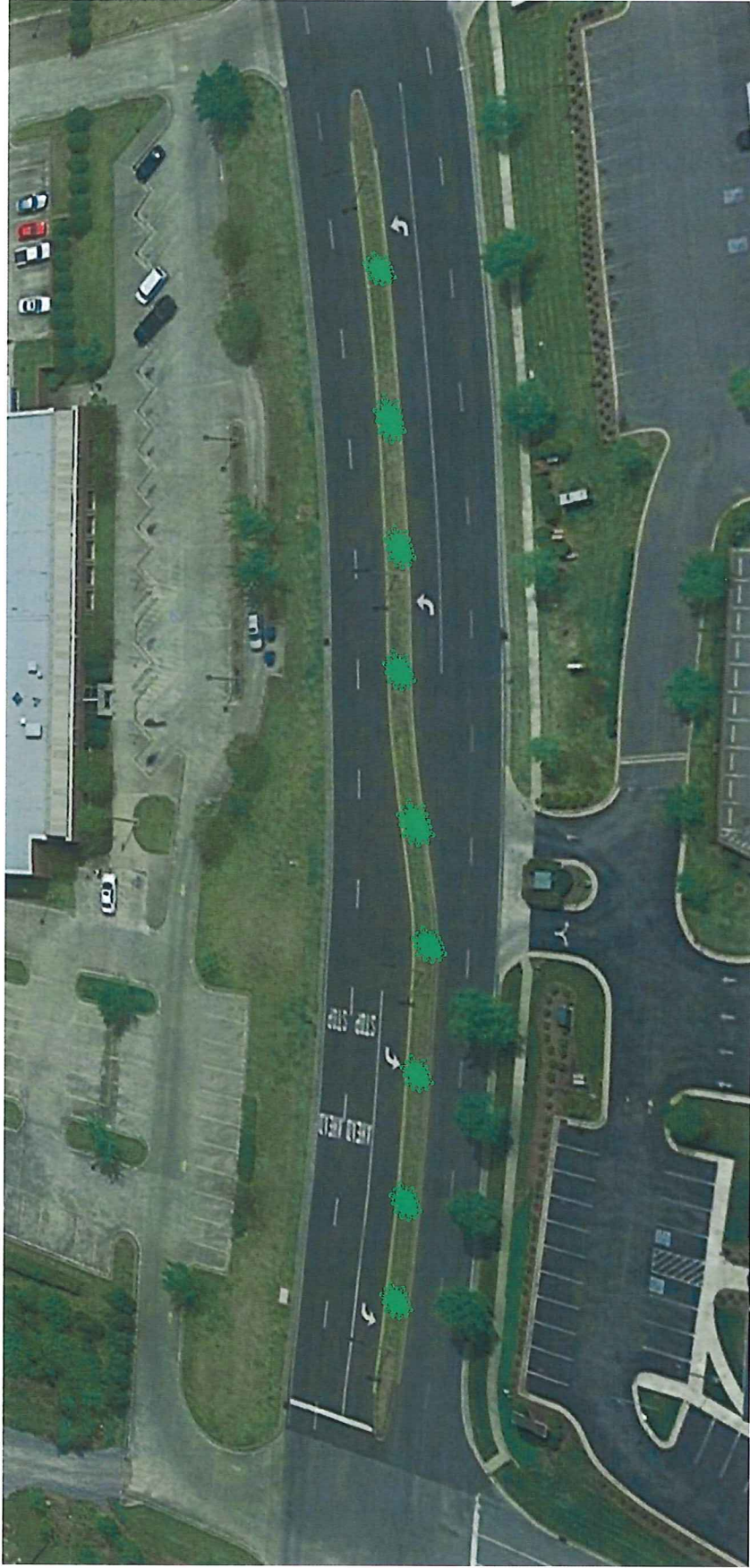
**SECTION III**

**Planting Layout Map**

578 Linear Feet – 9 Trees at 30' Intervals

pH: 7.3





#### SECTION IV

#### Planting Layout Map

489 Linear Feet – 9 Trees at 30' Intervals

pH: 7.3