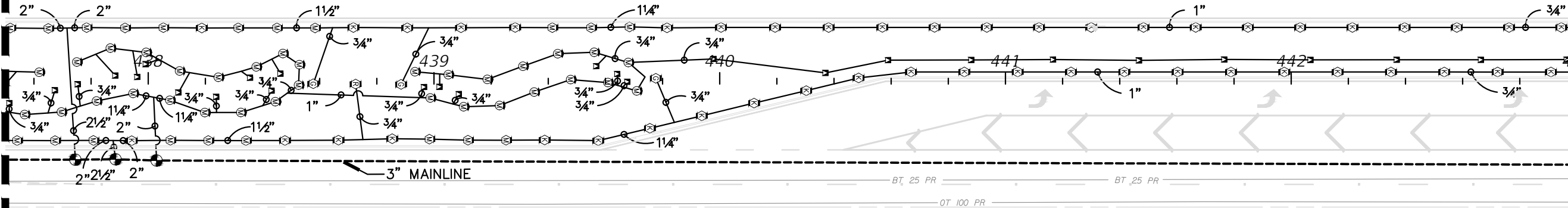


MATCHLINE STA. 437+50.00

MATCHLINE STA. 443+00.00



NOTES:

- CONTRACTOR TO PROVIDE NEW WELL UP TO 100' DEEP, WITH DIAMETER AS SPECIFIED. PROVIDE A LINE ITEM 'PER FOOT' COST FOR EACH ADDITIONAL FOOT OF DEPTH, IF NEEDED. CONTRACTOR SHALL NOT DRILL THE WELL DEEPER THAN 100' WITHOUT RECEIVING PRIOR WRITTEN AUTHORIZATION. IF PRIOR AUTHORIZATION IS NOT OBTAINED, IN WRITING, NO ADDITIONAL MONIES WILL BE PAID.
- AFTER THE WELL IS DRILLED, A STEP TEST MUST BE PERFORMED ON THE WELL TO VERIFY THE WELL CAN PRODUCE THE REQUIRED VOLUME OF WATER ON A CONTINUAL BASIS. THE STEP TEST MUST LAST 8 HOURS WITH WATER LEVEL MEASURED EACH HALF HOUR. PEAK DEMAND IS THE GPM IDENTIFIED IN THE POC NOTE ON THE NOTES SHEET:  
HOURS 1-2 - PUMP AT 50% OF PEAK DEMAND  
HOURS 3-4 - PUMP AT 75% OF PEAK DEMAND  
HOURS 5-6 - PUMP AT 100% PEAK DEMAND  
HOURS 7-8 - PUMP AT 125% OF PEAK DEMAND  
THE RESULTS OF THIS TEST MUST BE APPROVED BY THE OWNER/OWNERS REPRESENTATIVE PRIOR TO THE INSTALLATION OF THE PUMP OR IRRIGATION SYSTEM COMPONENTS. IF THE CONTRACTOR DOES NOT FOLLOW THESE REQUIREMENTS AND THE WELL PROVES TO BE INSUFFICIENT, THE CONTRACTOR BEARS 100% OF THE RESPONSIBILITY AND COSTS TO CORRECT/MODIFY THE SYSTEM TO ACCOMMODATE THE EVENTUAL WATER SOURCE.
- AFTER DRILLING THE WELL, CHECK THE WATER QUALITY TO ENSURE IT IS SUITABLE FOR LANDSCAPE PLANTINGS. USE THE SERVICES OF A REPUTABLE, LICENSED LABORATORY ONLY. WATER QUALITY TESTING MUST INCLUDE pH, CONDUCTIVITY, SODIUM, POTASSIUM, CALCIUM, MAGNESIUM, CARBONATE, BICARBONATE, CHLORIDE, PHOSPHOROUS, NITRATE NO3, SULFATE SO4, BORON, IRON, TOTAL DISSOLVED SOLIDS, SODIUM ABSORPTION RATIO, AND HARDNESS. IF THE WATER IS DETERMINED SUITABLE CONTINUE IRRIGATION INSTALLATION. IF THE WATER QUALITY IS UNSUITABLE, DO NOT PROCEED WITHOUT WRITTEN DIRECTION FROM THE OWNER/OWNER'S REPRESENTATIVE.
- IF A HIGH IRON CONTENT (OR OTHER STAIN PRODUCING COMPOUND) IS DETECTED, ADVISE THE OWNER/OWNER'S REPRESENTATIVE. DO NOT PROCEED WITHOUT WRITTEN PERMISSION. IF A CHEMICAL INJECTION SYSTEM IS REQUIRED BY THE OWNER, IT MUST BE DIRECTED BY THE OWNER AND INSTALLED BY THE PUMP SYSTEM MANUFACTURER.
- THE WELL CASING SHALL BE GALVANIZED STEEL PIPE (SIZED PER PLAN).
- THE PUMP DROP PIPE SHALL BE 2" CERTA LOCK PVC PIPE.
- PRIOR TO INSTALLING ANY IRRIGATION SYSTEM COMPONENTS, THE CONTRACTOR SHALL OBTAIN A WATER SAMPLE FROM THE PROPOSED WATER SUPPLY. CONDUCT A PARTICLE SIZE AND COUNT ANALYSIS ON THE SAMPLE USING THE SERVICES OF A REPUTABLE LAB CERTIFIED IN SUCH ANALYSES. SUBMIT THE TEST RESULTS TO THE OWNER/OWNER'S REPRESENTATIVE FOR REVIEW AND APPROVAL. DO NOT PROCEED FURTHER WITH SYSTEM INSTALLATION UNTIL GIVEN WRITTEN APPROVAL TO DO SO. IF CONTRACTOR DOES NOT COMPLY WITH THIS REQUIREMENT, ANY COSTS TO MAKE THE IRRIGATION SYSTEM OPERATE AS REQUIRED (WHICH WOULD NOT HAVE BEEN INCURRED HAD THESE REQUIREMENTS BEEN COMPLIED WITH), WILL BE THE RESPONSIBILITY OF THE CONTRACTOR.
- THE FUTURE INTENDED IRRIGATION WATER SOURCE IS RECLAIMED WATER IF IT BECOMES AVAILABLE. ALL IRRIGATION MATERIAL SHALL BE COLOR CODED 'PANTONE PURPLE' AS REQUIRED BY FLORIDA DEPARTMENT OF ENVIRONMENTAL PROTECTION.

CONTROL NOTES:

- CONTRACTOR TO PROGRAM THE CONTROLLER(S) TO RUN BUBBLER AND SHRUB ZONES TWO AT A TIME (BUBBLER WITH BUBBLER AND SHRUB WITH SHRUB) TO MAINTAIN FLOW ABOVE THE PUMP'S MINIMUM 5 GPM FLOW AND BELOW 65 GPM.

IRRIGATION LEGEND

▼	RB1804-SAM-1404 FLOOD BUBBLES W/NP COVER	0.25 GPM @ 30 PSI
⊙	RB1806-SAM-PRS-30 W/HUNTER MPRSS530	0.44 GPM @ 40 PSI
Ⓜ	RB1806-SAM-PRS-30 W/ HUNTER MP1000 adj. arc 90°-210°	0.19-0.43 GPM @ 40 PSI
Ⓢ	RB1806-SAM-PRS-30 W/HUNTER MP1000360	0.37 GPM @ 40 PSI
Ⓚ	RB1806-SAM-PRS-30 W/HUNTER MP2000 adj. arc 90°-210°	0.40-1.10 GPM @ 40 PSI
Ⓡ	RB1806-SAM-PRS-30 W/HUNTER MP2000360	1.47 GPM @ 40 PSI
Ⓟ	RB1806-SAM-PRS-30 W/HUNTER MP3000 adj. arc 90°-210°	0.86-2.12 GPM @ 40 PSI
⊙	RB PEB SERIES RCV with flow control	⚡ NIBCO P-619-RW MAINLINE ISO VALVE
WP	SULLIVAN ELECTRIC 5HP	ACC HUNTER ACC 18STATION CONTROLLER
P.O.C.	WELL POINT - 4" SHALLOW WELL - 100FT MAX DEPTH	Ⓡ HUNTER RFC POLE MOUNTED
---	CLASS 200 PANTONE PURPLE PVC LATERAL LINE	FS DATA INDUSTRIES MODEL #220 BR.
---	W/SCH 40 SOLVENT WELD PVC FITTING (SIZE PER PLAN MIN. PIPE SIZE 3/4")	BF FEBCO RPZ BACKFLOW PREVENTER
---	CLASS 200 PANTONE PURPLE PVC GASKETED 'O' RING	
---	MAINLINE W/LEEMKO DUCTILE IRON FITTING WITH MECHANICAL JOIN RESTRAINTS (SIZE PER PLAN)	
---	IRRIGATION PIPE SLEEVE - CLASS 200 W/SCH 40	
---	SOLVENT-WELD PVC FITTING	
---	SCH40 GREY PVC CONDUIT W/SCH0 SOLVENT-WELD PVC FITTING	

SLEEVE SIZE SCHEDULE

PIPE SIZE (CLASS 200)	SLEEVE SIZE (SCHEDULE 40)
3/4"	1-1/2"
1"	2"
1-1/4"	2-1/2"
1-1/2"	3"
2"	4"
2-1/2"	6"
3, 4"	6"

NOTES

- MAINLINE HAS BEEN SHOWN FOR CLARITY ONLY. MAINLINE SHALL BE LOCATED WITHIN THE ROADWAY MEADIAN.
- PIPE SLEEVES SHALL ALLOW FOR IRRIGATION PIPING AND THEIR RELATED COUPLINGS TO EASILY SLIDE THROUGH SLEEVING PIPE. EXTEND SLEEVES 18 INCHES BEYOND EDGES OF PAVING. REFER TO SLEEVE SIZE SCHEDULE.



ADDENDUM 2

R E V I S I O N S				
	DESCRIPTION	DATE	BY	DESCRIPTION

**Kimley»Horn**

MATTHEW T. FRANKO, P.L.A. No. 6667292  
445 24TH STREET, SUITE 200  
VERO BEACH, FL 32960  
(772) 794-4100  
REGISTRY No: 696

**INDIAN RIVER COUNTY**  
**BOARD OF COUNTY COMMISSIONERS**  
**66th AVENUE FROM 69th STREET**  
**TO SR-510/85th STREET**

**66th AVENUE**  
**IRRIGATION PLAN**

SHEET  
NO.

LD-27



MATCHLINE STA. 443+00.00

MATCHLINE STA. 448+50.00

NOTES:

- CONTRACTOR TO PROVIDE NEW WELL UP TO 100' DEEP, WITH DIAMETER AS SPECIFIED. PROVIDE A LINE ITEM 'PER FOOT' COST FOR EACH ADDITIONAL FOOT OF DEPTH, IF NEEDED. CONTRACTOR SHALL NOT DRILL THE WELL DEEPER THAN 100' WITHOUT RECEIVING PRIOR WRITTEN AUTHORIZATION. IF PRIOR AUTHORIZATION IS NOT OBTAINED, IN WRITING, NO ADDITIONAL MONIES WILL BE PAID.
- AFTER THE WELL IS DRILLED, A STEP TEST MUST BE PERFORMED ON THE WELL TO VERIFY THE WELL CAN PRODUCE THE REQUIRED VOLUME OF WATER ON A CONTINUAL BASIS. THE STEP TEST MUST LAST 8 HOURS WITH WATER LEVEL MEASURED EACH HALF HOUR. PEAK DEMAND IS THE GPM IDENTIFIED IN THE POC NOTE ON THE NOTES SHEET:  
HOURS 1-2 - PUMP AT 50% OF PEAK DEMAND  
HOURS 3-4 - PUMP AT 75% OF PEAK DEMAND  
HOURS 5-6 - PUMP AT 100% PEAK DEMAND  
HOURS 7-8 - PUMP AT 125% OF PEAK DEMAND  
THE RESULTS OF THIS TEST MUST BE APPROVED BY THE OWNER/OWNERS REPRESENTATIVE PRIOR TO THE INSTALLATION OF THE PUMP OR IRRIGATION SYSTEM COMPONENTS. IF THE CONTRACTOR DOES NOT FOLLOW THESE REQUIREMENTS AND THE WELL PROVES TO BE INSUFFICIENT, THE CONTRACTOR BEARS 100% OF THE RESPONSIBILITY AND COSTS TO CORRECT/MODIFY THE SYSTEM TO ACCOMMODATE THE EVENTUAL WATER SOURCE.
- AFTER DRILLING THE WELL, CHECK THE WATER QUALITY TO ENSURE IT IS SUITABLE FOR LANDSCAPE PLANTINGS. USE THE SERVICES OF A REPUTABLE, LICENSED LABORATORY ONLY. WATER QUALITY TESTING MUST INCLUDE pH, CONDUCTIVITY, SODIUM, POTASSIUM, CALCIUM, MAGNESIUM, CARBONATE, BICARBONATE, CHLORIDE, PHOSPHOROUS, NITRATE NO3, SULFATE SO4, BORON, IRON, TOTAL DISSOLVED SOLIDS, SODIUM ABSORPTION RATIO, AND HARDNESS. IF THE WATER IS DETERMINED SUITABLE CONTINUE IRRIGATION INSTALLATION. IF THE WATER QUALITY IS UNSUITABLE, DO NOT PROCEED WITHOUT WRITTEN DIRECTION FROM THE OWNER/OWNER'S REPRESENTATIVE.
- IF A HIGH IRON CONTENT (OR OTHER STAIN PRODUCING COMPOUND) IS DETECTED, ADVISE THE OWNER/OWNER'S REPRESENTATIVE. DO NOT PROCEED WITHOUT WRITTEN PERMISSION. IF A CHEMICAL INJECTION SYSTEM IS REQUIRED BY THE OWNER, IT MUST BE DIRECTED BY THE OWNER AND INSTALLED BY THE PUMP SYSTEM MANUFACTURER.
- THE WELL CASING SHALL BE GALVANIZED STEEL PIPE (SIZED PER PLAN).
- THE PUMP DROP PIPE SHALL BE 2" CERTA LOCK PVC PIPE.
- PRIOR TO INSTALLING ANY IRRIGATION SYSTEM COMPONENTS, THE CONTRACTOR SHALL OBTAIN A WATER SAMPLE FROM THE PROPOSED WATER SUPPLY. CONDUCT A PARTICLE SIZE AND COUNT ANALYSIS ON THE SAMPLE USING THE SERVICES OF A REPUTABLE LAB CERTIFIED IN SUCH ANALYSES. SUBMIT THE TEST RESULTS TO THE OWNER/OWNER'S REPRESENTATIVE FOR REVIEW AND APPROVAL. DO NOT PROCEED FURTHER WITH SYSTEM INSTALLATION UNTIL GIVEN WRITTEN APPROVAL TO DO SO. IF CONTRACTOR DOES NOT COMPLY WITH THIS REQUIREMENT, ANY COSTS TO MAKE THE IRRIGATION SYSTEM OPERATE AS REQUIRED (WHICH WOULD NOT HAVE BEEN INCURRED HAD THESE REQUIREMENTS BEEN COMPLIED WITH), WILL BE THE RESPONSIBILITY OF THE CONTRACTOR.
- THE FUTURE INTENDED IRRIGATION WATER SOURCE IS RECLAIMED WATER IF IT BECOMES AVAILABLE. ALL IRRIGATION MATERIAL SHALL BE COLOR CODED 'PANTONE' PURPLE' AS REQUIRED BY FLORIDA DEPARTMENT OF ENVIRONMENTAL PROTECTION.

CONTROL NOTES:

- CONTRACTOR TO PROGRAM THE CONTROLLER(S) TO RUN BUBBLER AND SHRUB ZONES TWO AT A TIME (BUBBLER WITH BUBBLER AND SHRUB WITH SHRUB) TO MAINTAIN FLOW ABOVE THE PUMP'S MINIMUM 5 GPM FLOW AND BELOW 65 GPM.

IRRIGATION LEGEND

▼	RB1804-SAM-1404 FLOOD BUBBLES W/NP COVER	0.25 GPM @ 30 PSI
⊙	RB1806-SAM-PRS-30 W/HUNTER MPRSS530	0.44 GPM @ 40 PSI
Ⓜ	RB1806-SAM-PRS-30 W/ HUNTER MP1000 adj. arc 90°-210°	0.19-0.43 GPM @ 40 PSI
Ⓢ	RB1806-SAM-PRS-30 W/HUNTER MP1000360	0.37 GPM @ 40 PSI
Ⓚ	RB1806-SAM-PRS-30 W/HUNTER MP2000 adj. arc 90°-210°	0.40-1.10 GPM @ 40 PSI
Ⓡ	RB1806-SAM-PRS-30 W/HUNTER MP2000360	1.47 GPM @ 40 PSI
Ⓟ	RB1806-SAM-PRS-30 W/HUNTER MP3000 adj. arc 90°-210°	0.86-2.12 GPM @ 40 PSI
⊙	RB PEB SERIES RCV with flow control	
WP	SULLIVAN ELECTRIC 5HP	
P.O.C.	WELL POINT - 4" SHALLOW WELL - 100FT MAX DEPTH	
—	CLASS 200 PANTONE PURPLE PVC LATERAL LINE W/SCH 40 SOLVENT WELD PVC FITTING (SIZE PER PLAN MIN. PIPE SIZE 3/4")	
—	CLASS 200 PANTONE PURPLE PVC GASKETED 'O' RING MAINLINE W/LEEMKO DUCTILE IRON FITTING WITH MECHANICAL JOIN RESTRAINTS (SIZE PER PLAN)	
---	IRRIGATION PIPE SLEEVE - CLASS 200 W/SCH 40 SOLVENT-WELD PVC FITTING	
---	SCH40 GREY PVC CONDUIT W/SCH0 SOLVENT-WELD PVC FITTING	
⌘	NIBCO P-619-RW MAINLINE ISO VALVE	
ACC	HUNTER ACC 18STATION CONTROLLER	
Ⓡ	HUNTER RFC POLE MOUNTED	
FS	DATA INDUSTRIES MODEL #220 BR.	
BF	FEBCO RPZ BACKFLOW PREVENTER	

SLEEVE SIZE SCHEDULE

PIPE SIZE (CLASS 200)	SLEEVE SIZE (SCHEDULE 40)
3/4"	1-1/2"
1"	2"
1-1/4"	2-1/2"
1-1/2"	3"
2"	4"
2-1/2"	6"
3, 4"	6"

NOTES

- MAINLINE HAS BEEN SHOWN FOR CLARITY ONLY. MAINLINE SHALL BE LOCATED WITHIN THE ROADWAY MEADIAN.
- PIPE SLEEVES SHALL ALLOW FOR IRRIGATION PIPING AND THEIR RELATED COUPLINGS TO EASILY SLIDE THROUGH SLEEVING PIPE. EXTEND SLEEVES 18 INCHES BEYOND EDGES OF PAVING. REFER TO SLEEVE SIZE SCHEDULE.



ADDENDUM 2

R E V I S I O N S				
	DESCRIPTION	DATE	BY	DESCRIPTION

**Kimley»Horn**

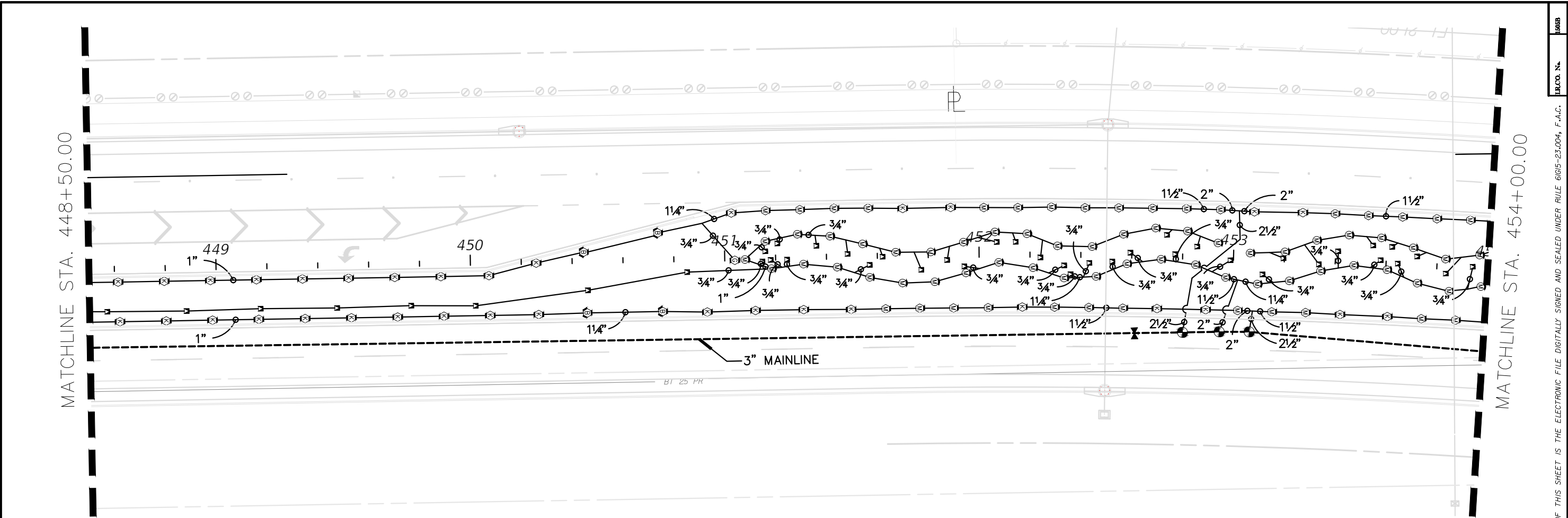
MATTHEW T. FRANKO, P.L.A. No. 6667292  
445 24TH STREET, SUITE 200  
VERO BEACH, FL 32960  
(772) 794-4100  
REGISTRY No# 696

**INDIAN RIVER COUNTY**  
**BOARD OF COUNTY COMMISSIONERS**  
**66th AVENUE FROM 69th STREET**  
**TO SR-510/85th STREET**

**66th AVENUE**  
**IRRIGATION PLAN**

SHEET  
NO.

LD-28



- NOTES:**
- CONTRACTOR TO PROVIDE NEW WELL UP TO 100' DEEP, WITH DIAMETER AS SPECIFIED. PROVIDE A LINE ITEM 'PER FOOT' COST FOR EACH ADDITIONAL FOOT OF DEPTH. IF NEEDED. CONTRACTOR SHALL NOT DRILL THE WELL DEEPER THAN 100' WITHOUT RECEIVING PRIOR WRITTEN AUTHORIZATION. IF PRIOR AUTHORIZATION IS NOT OBTAINED, IN WRITING, NO ADDITIONAL MONIES WILL BE PAID.
  - AFTER THE WELL IS DRILLED, A STEP TEST MUST BE PERFORMED ON THE WELL TO VERIFY THE WELL CAN PRODUCE THE REQUIRED VOLUME OF WATER ON A CONTINUAL BASIS. THE STEP TEST MUST LAST 8 HOURS WITH WATER LEVEL MEASURED EACH HALF HOUR. PEAK DEMAND IS THE GPM IDENTIFIED IN THE POC NOTE ON THE NOTES SHEET:  
HOURS 1-2 - PUMP AT 50% OF PEAK DEMAND  
HOURS 3-4 - PUMP AT 75% OF PEAK DEMAND  
HOURS 5-6 - PUMP AT 100% PEAK DEMAND  
HOURS 7-8 - PUMP AT 125% OF PEAK DEMAND  
THE RESULTS OF THIS TEST MUST BE APPROVED BY THE OWNER/OWNERS REPRESENTATIVE PRIOR TO THE INSTALLATION OF THE PUMP OR IRRIGATION SYSTEM COMPONENTS. IF THE CONTRACTOR DOES NOT FOLLOW THESE REQUIREMENTS AND THE WELL PROVES TO BE INSUFFICIENT, THE CONTRACTOR BEARS 100% OF THE RESPONSIBILITY AND COSTS TO CORRECT/MODIFY THE SYSTEM TO ACCOMMODATE THE EVENTUAL WATER SOURCE.
  - AFTER DRILLING THE WELL, CHECK THE WATER QUALITY TO ENSURE IT IS SUITABLE FOR LANDSCAPE PLANTINGS. USE THE SERVICES OF A REPUTABLE, LICENSED LABORATORY ONLY. WATER QUALITY TESTING MUST INCLUDE pH, CONDUCTIVITY, SODIUM, POTASSIUM, CALCIUM, MAGNESIUM, CARBONATE, BICARBONATE, CHLORIDE, PHOSPHOROUS, NITRATE NO3, SULFATE SO4, BORON, IRON, TOTAL DISSOLVED SOLIDS, SODIUM ABSORPTION RATIO, AND HARDNESS. IF THE WATER IS DETERMINED SUITABLE CONTINUE IRRIGATION INSTALLATION. IF THE WATER QUALITY IS UNSUITABLE, DO NOT PROCEED WITHOUT WRITTEN DIRECTION FROM THE OWNER/OWNER'S REPRESENTATIVE.
  - IF A HIGH IRON CONTENT (OR OTHER STAIN PRODUCING COMPOUND) IS DETECTED, ADVISE THE OWNER/OWNER'S REPRESENTATIVE. DO NOT PROCEED WITHOUT WRITTEN PERMISSION. IF A CHEMICAL INJECTION SYSTEM IS REQUIRED BY THE OWNER, IT MUST BE DIRECTED BY THE OWNER AND INSTALLED BY THE PUMP SYSTEM MANUFACTURER.
  - THE WELL CASING SHALL BE GALVANIZED STEEL PIPE (SIZED PER PLAN).
  - THE PUMP DROP PIPE SHALL BE 2" CERTA LOCK PVC PIPE.
  - PRIOR TO INSTALLING ANY IRRIGATION SYSTEM COMPONENTS, THE CONTRACTOR SHALL OBTAIN A WATER SAMPLE FROM THE PROPOSED WATER SUPPLY. CONDUCT A PARTICLE SIZE AND COUNT ANALYSIS ON THE SAMPLE USING THE SERVICES OF A REPUTABLE LAB CERTIFIED IN SUCH ANALYSES. SUBMIT THE TEST RESULTS TO THE OWNER/OWNER'S REPRESENTATIVE FOR REVIEW AND APPROVAL. DO NOT PROCEED FURTHER WITH SYSTEM INSTALLATION UNTIL GIVEN WRITTEN APPROVAL TO DO SO. IF CONTRACTOR DOES NOT COMPLY WITH THIS REQUIREMENT, ANY COSTS TO MAKE THE IRRIGATION SYSTEM OPERATE AS REQUIRED (WHICH WOULD NOT HAVE BEEN INCURRED HAD THESE REQUIREMENTS BEEN COMPLIED WITH), WILL BE THE RESPONSIBILITY OF THE CONTRACTOR.
  - THE FUTURE INTENDED IRRIGATION WATER SOURCE IS RECLAIMED WATER IF IT BECOMES AVAILABLE. ALL IRRIGATION MATERIAL SHALL BE COLOR CODED 'PANTONE PURPLE' AS REQUIRED BY FLORIDA DEPARTMENT OF ENVIRONMENTAL PROTECTION.
- CONTROL NOTES:**
- CONTRACTOR TO PROGRAM THE CONTROLLER(S) TO RUN BUBBLER AND SHRUB ZONES TWO AT A TIME (BUBBLER WITH BUBBLER AND SHRUB WITH SHRUB) TO MAINTAIN FLOW ABOVE THE PUMP'S MINIMUM 5 GPM FLOW AND BELOW 65 GPM.

IRRIGATION LEGEND

▼	RB1804-SAM-1404 FLOOD BUBBLES W/NP COVER	0.25 GPM @ 30 PSI
⊙	RB1806-SAM-PRS-30 W/HUNTER MPRSS530	0.44 GPM @ 40 PSI
Ⓜ	RB1806-SAM-PRS-30 W/ HUNTER MP1000 adj. arc 90°-210°	0.19-0.43 GPM @ 40 PSI
Ⓢ	RB1806-SAM-PRS-30 W/HUNTER MP1000360	0.37 GPM @ 40 PSI
Ⓚ	RB1806-SAM-PRS-30 W/HUNTER MP2000 adj. arc 90°-210°	0.40-1.10 GPM @ 40 PSI
Ⓡ	RB1806-SAM-PRS-30 W/HUNTER MP2000360	1.47 GPM @ 40 PSI
Ⓟ	RB1806-SAM-PRS-30 W/HUNTER MP3000 adj. arc 90°-210°	0.86-2.12 GPM @ 40 PSI
⊙	RB PEB SERIES RCV with flow control	NIBCO P-619-RW MAINLINE ISO VALVE
WP	SULLIVAN ELECTRIC 5HP	ACC HUNTER ACC 18STATION CONTROLLER
P.O.C.	WELL POINT - 4" SHALLOW WELL - 100FT MAX DEPTH	Ⓡ HUNTER RFC POLE MOUNTED
---	CLASS 200 PANTONE PURPLE PVC LATERAL LINE	Ⓢ DATA INDUSTRIES MODEL #220 BR.
---	W/SCH 40 SOLVENT WELD PVC FITTING (SIZE PER PLAN MIN. PIPE SIZE 3/4")	Ⓟ FEBCO RPZ BACKFLOW PREVENTER
---	CLASS 200 PANTONE PURPLE PVC GASKETED 'O' RING	
---	MAINLINE W/LEEMKO DUCTILE IRON FITTING WITH MECHANICAL JOIN RESTRAINTS (SIZE PER PLAN)	
---	IRRIGATION PIPE SLEEVE - CLASS 200 W/SCH 40	
---	SOLVENT-WELD PVC FITTING	
---	SCH40 GREY PVC CONDUIT W/SCH0 SOLVENT-WELD PVC FITTING	

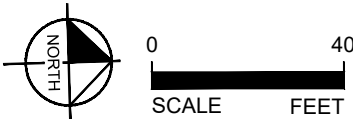
SLEEVE SIZE SCHEDULE

PIPE SIZE (CLASS 200)	SLEEVE SIZE (SCHEDULE 40)
3/4"	1-1/2"
1"	2"
1-1/4"	2-1/2"
1-1/2"	3"
2"	4"
2-1/2"	6"
3, 4"	6"

**NOTES**

- MAINLINE HAS BEEN SHOWN FOR CLARITY ONLY. MAINLINE SHALL BE LOCATED WITHIN THE ROADWAY MEADIAN.
- PIPE SLEEVES SHALL ALLOW FOR IRRIGATION PIPING AND THEIR RELATED COUPLINGS TO EASILY SLIDE THROUGH SLEEVING PIPE. EXTEND SLEEVES 18 INCHES BEYOND EDGES OF PAVING. REFER TO SLEEVE SIZE SCHEDULE.

ADDENDUM 2

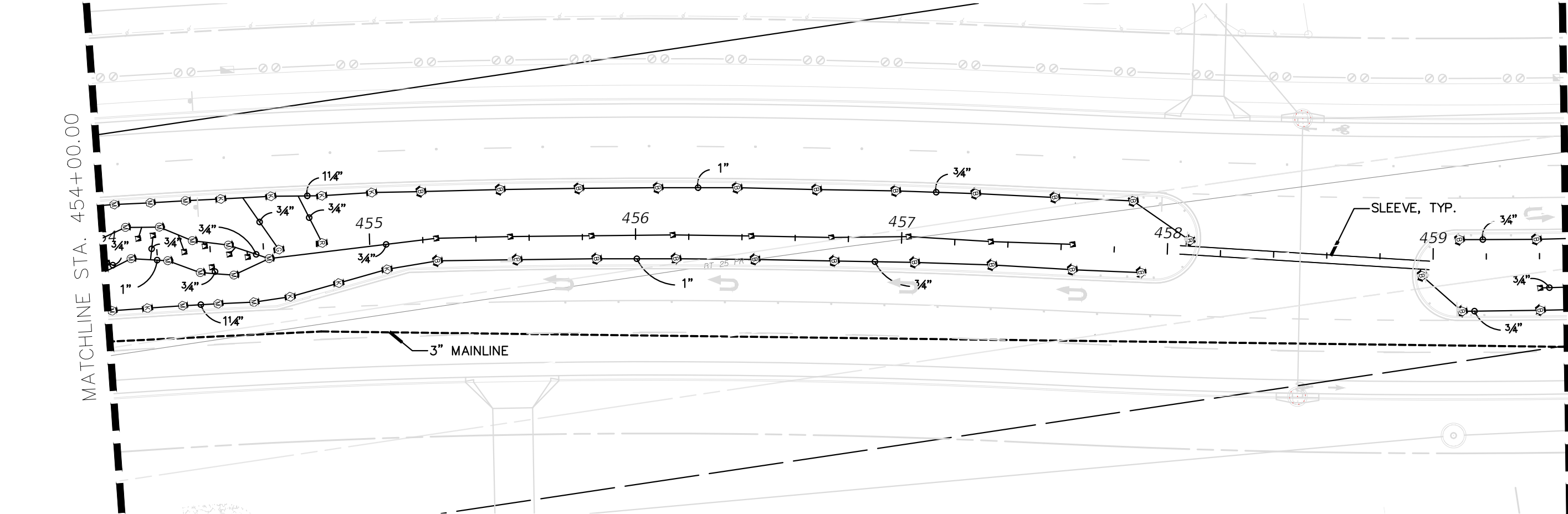


REVISIONS					Kimley»Horn	INDIAN RIVER COUNTY BOARD OF COUNTY COMMISSIONERS 66th AVENUE FROM 69th STREET TO SR-510/85th STREET	66th AVENUE IRRIGATION PLAN	SHEET NO.  LD-29
DESCRIPTION	DATE	BY	DESCRIPTION					
					MATTHEW T. FRANKO, P.L.A. No. 6667292 445 24TH STREET, SUITE 200 VERO BEACH, FL 32960 (772) 794-4100 REGISTRY No. 696			



MATCHLINE STA. 454+00.00

MATCHLINE STA. 459+50.00



NOTES:

- CONTRACTOR TO PROVIDE NEW WELL UP TO 100' DEEP, WITH DIAMETER AS SPECIFIED. PROVIDE A LINE ITEM 'PER FOOT' COST FOR EACH ADDITIONAL FOOT OF DEPTH. IF NEEDED, CONTRACTOR SHALL NOT DRILL THE WELL DEEPER THAN 100' WITHOUT RECEIVING PRIOR WRITTEN AUTHORIZATION. IF PRIOR AUTHORIZATION IS NOT OBTAINED, IN WRITING, NO ADDITIONAL MONIES WILL BE PAID.
- AFTER THE WELL IS DRILLED, A STEP TEST MUST BE PERFORMED ON THE WELL TO VERIFY THE WELL CAN PRODUCE THE REQUIRED VOLUME OF WATER ON A CONTINUAL BASIS. THE STEP TEST MUST LAST 8 HOURS WITH WATER LEVEL MEASURED EACH HALF HOUR. PEAK DEMAND IS THE GPM IDENTIFIED IN THE POC NOTE ON THE NOTES SHEET:  
HOURS 1-2 - PUMP AT 50% OF PEAK DEMAND  
HOURS 3-4 - PUMP AT 75% OF PEAK DEMAND  
HOURS 5-6 - PUMP AT 100% PEAK DEMAND  
HOURS 7-8 - PUMP AT 125% OF PEAK DEMAND  
THE RESULTS OF THIS TEST MUST BE APPROVED BY THE OWNER/OWNERS REPRESENTATIVE PRIOR TO THE INSTALLATION OF THE PUMP OR IRRIGATION SYSTEM COMPONENTS. IF THE CONTRACTOR DOES NOT FOLLOW THESE REQUIREMENTS AND THE WELL PROVES TO BE INSUFFICIENT, THE CONTRACTOR BEARS 100% OF THE RESPONSIBILITY AND COSTS TO CORRECT/MODIFY THE SYSTEM TO ACCOMMODATE THE EVENTUAL WATER SOURCE.
- AFTER DRILLING THE WELL, CHECK THE WATER QUALITY TO ENSURE IT IS SUITABLE FOR LANDSCAPE PLANTINGS. USE THE SERVICES OF A REPUTABLE, LICENSED LABORATORY ONLY. WATER QUALITY TESTING MUST INCLUDE pH, CONDUCTIVITY, SODIUM, POTASSIUM, CALCIUM, MAGNESIUM, CARBONATE, BICARBONATE, CHLORIDE, PHOSPHOROUS, NITRATE NO3, SULFATE SO4, BORON, IRON, TOTAL DISSOLVED SOLIDS, SODIUM ABSORPTION RATIO, AND HARDNESS. IF THE WATER IS DETERMINED SUITABLE CONTINUE IRRIGATION INSTALLATION. IF THE WATER QUALITY IS UNSUITABLE, DO NOT PROCEED WITHOUT WRITTEN DIRECTION FROM THE OWNER/OWNER'S REPRESENTATIVE.
- IF A HIGH IRON CONTENT (OR OTHER STAIN PRODUCING COMPOUND) IS DETECTED, ADVISE THE OWNER/OWNER'S REPRESENTATIVE. DO NOT PROCEED WITHOUT WRITTEN PERMISSION. IF A CHEMICAL INJECTION SYSTEM IS REQUIRED BY THE OWNER, IT MUST BE DIRECTED BY THE OWNER AND INSTALLED BY THE PUMP SYSTEM MANUFACTURER.
- THE WELL CASING SHALL BE GALVANIZED STEEL PIPE (SIZED PER PLAN).
- THE PUMP DROP PIPE SHALL BE 2" CERTA LOCK PVC PIPE.
- PRIOR TO INSTALLING ANY IRRIGATION SYSTEM COMPONENTS, THE CONTRACTOR SHALL OBTAIN A WATER SAMPLE FROM THE PROPOSED WATER SUPPLY. CONDUCT A PARTICLE SIZE AND COUNT ANALYSIS ON THE SAMPLE USING THE SERVICES OF A REPUTABLE LAB CERTIFIED IN SUCH ANALYSES. SUBMIT THE TEST RESULTS TO THE OWNER/OWNER'S REPRESENTATIVE FOR REVIEW AND APPROVAL. DO NOT PROCEED FURTHER WITH SYSTEM INSTALLATION UNTIL GIVEN WRITTEN APPROVAL TO DO SO. IF CONTRACTOR DOES NOT COMPLY WITH THIS REQUIREMENT, ANY COSTS TO MAKE THE IRRIGATION SYSTEM OPERATE AS REQUIRED (WHICH WOULD NOT HAVE BEEN INCURRED HAD THESE REQUIREMENTS BEEN COMPLIED WITH), WILL BE THE RESPONSIBILITY OF THE CONTRACTOR.
- THE FUTURE INTENDED IRRIGATION WATER SOURCE IS RECLAIMED WATER IF IT BECOMES AVAILABLE. ALL IRRIGATION MATERIAL SHALL BE COLOR CODED 'PANTONE' PURPLE' AS REQUIRED BY FLORIDA DEPARTMENT OF ENVIRONMENTAL PROTECTION.

CONTROL NOTES:

- CONTRACTOR TO PROGRAM THE CONTROLLER(S) TO RUN BUBBLER AND SHRUB ZONES TWO AT A TIME (BUBBLER WITH BUBBLER AND SHRUB WITH SHRUB) TO MAINTAIN FLOW ABOVE THE PUMP'S MINIMUM 5 GPM FLOW AND BELOW 65 GPM.

IRRIGATION LEGEND

▼	RB1804-SAM-1404 FLOOD BUBBLES W/NP COVER	0.25 GPM @ 30 PSI
⊙	RB1806-SAM-PRS-30 W/HUNTER MPRSS530	0.44 GPM @ 40 PSI
Ⓜ	RB1806-SAM-PRS-30 W/ HUNTER MP1000 adj. arc 90°-210°	0.19-0.43 GPM @ 40 PSI
⓪	RB1806-SAM-PRS-30 W/HUNTER MP1000360	0.37 GPM @ 40 PSI
Ⓚ	RB1806-SAM-PRS-30 W/HUNTER MP2000 adj. arc 90°-210°	0.40-1.10 GPM @ 40 PSI
Ⓡ	RB1806-SAM-PRS-30 W/HUNTER MP2000360	1.47 GPM @ 40 PSI
Ⓟ	RB1806-SAM-PRS-30 W/HUNTER MP3000 adj. arc 90°-210°	0.86-2.12 GPM @ 40 PSI
⊗	RB PEB SERIES RCV with flow control	
WP	SULLIVAN ELECTRIC 5HP	
P.O.C.	WELL POINT - 4" SHALLOW WELL - 100FT MAX DEPTH	
—	CLASS 200 PANTONE PURPLE PVC LATERAL LINE W/SCH 40 SOLVENT WELD PVC FITTING (SIZE PER PLAN MIN. PIPE SIZE 3/4")	
—	CLASS 200 PANTONE PURPLE PVC GASKETED 'O' RING MAINLINE W/LEEMKO DUCTILE IRON FITTING WITH MECHANICAL JOIN RESTRAINTS (SIZE PER PLAN)	
---	IRRIGATION PIPE SLEEVE - CLASS 200 W/SCH 40 SOLVENT-WELD PVC FITTING	
—	SCH40 GREY PVC CONDUIT W/SCH0 SOLVENT-WELD PVC FITTING	
⌵	NIBCO P-619-RW MAINLINE ISO VALVE	
ACC	HUNTER ACC 18STATION CONTROLLER	
Ⓡ	HUNTER RFC POLE MOUNTED	
FS	DATA INDUSTRIES MODEL #220 BR.	
BF	FEBCO RPZ BACKFLOW PREVENTER	

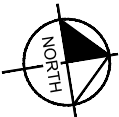
SLEEVE SIZE SCHEDULE

PIPE SIZE (CLASS 200)	SLEEVE SIZE (SCHEDULE 40)
3/4"	1-1/2"
1"	2"
1-1/4"	2-1/2"
1-1/2"	3"
2"	4"
2-1/2"	6"
3, 4"	6"

NOTES

- MAINLINE HAS BEEN SHOWN FOR CLARITY ONLY. MAINLINE SHALL BE LOCATED WITHIN THE ROADWAY MEADIAN.
- PIPE SLEEVES SHALL ALLOW FOR IRRIGATION PIPING AND THEIR RELATED COUPLINGS TO EASILY SLIDE THROUGH SLEEVING PIPE. EXTEND SLEEVES 18 INCHES BEYOND EDGES OF PAVING. REFER TO SLEEVE SIZE SCHEDULE.

ADDENDUM 2



REVISIONS				
	DESCRIPTION	DATE	BY	

**Kimley»Horn**

MATTHEW T. FRANKO, P.L.A. No. 6667292  
445 24TH STREET, SUITE 200  
VERO BEACH, FL 32960  
(772) 794-4100  
REGISTRY No. 696

**INDIAN RIVER COUNTY**  
**BOARD OF COUNTY COMMISSIONERS**  
**66th AVENUE FROM 69th STREET**  
**TO SR-510/85th STREET**

**66th AVENUE**  
**IRRIGATION PLAN**

SHEET  
NO.

LD-30

MATCHLINE STA. 459+50.00

MATCHLINE STA. 465+00.00

NOTES:  
1. CONTRACTOR TO PROVIDE NEW WELL UP TO 100' DEEP, WITH DIAMETER AS SPECIFIED. PROVIDE A LINE ITEM 'PER FOOT' COST FOR EACH ADDITIONAL FOOT OF DEPTH, IF NEEDED. CONTRACTOR SHALL NOT DRILL THE WELL DEEPER THAN 100' WITHOUT RECEIVING PRIOR WRITTEN AUTHORIZATION. IF PRIOR AUTHORIZATION IS NOT OBTAINED, IN WRITING, NO ADDITIONAL MONIES WILL BE PAID.  
2. AFTER THE WELL IS DRILLED, A STEP TEST MUST BE PERFORMED ON THE WELL TO VERIFY THE WELL CAN PRODUCE THE REQUIRED VOLUME OF WATER ON A CONTINUAL BASIS. THE STEP TEST MUST LAST 8 HOURS WITH WATER LEVEL MEASURED EACH HALF HOUR. PEAK DEMAND IS THE GPM IDENTIFIED IN THE POC NOTE ON THE NOTES SHEET:  
HOURS 1-2 - PUMP AT 50% OF PEAK DEMAND  
HOURS 3-4 - PUMP AT 75% OF PEAK DEMAND  
HOURS 5-6 - PUMP AT 100% PEAK DEMAND  
HOURS 7-8 - PUMP AT 125% OF PEAK DEMAND  
THE RESULTS OF THIS TEST MUST BE APPROVED BY THE OWNER/OWNERS REPRESENTATIVE PRIOR TO THE INSTALLATION OF THE PUMP OR IRRIGATION SYSTEM COMPONENTS. IF THE CONTRACTOR DOES NOT FOLLOW THESE REQUIREMENTS AND THE WELL PROVES TO BE INSUFFICIENT, THE CONTRACTOR BEARS 100% OF THE RESPONSIBILITY AND COSTS TO CORRECT/MODIFY THE SYSTEM TO ACCOMMODATE THE EVENTUAL WATER SOURCE.  
3. AFTER DRILLING THE WELL, CHECK THE WATER QUALITY TO ENSURE IT IS SUITABLE FOR LANDSCAPE PLANTINGS. USE THE SERVICES OF A REPUTABLE, LICENSED LABORATORY ONLY. WATER QUALITY TESTING MUST INCLUDE pH, CONDUCTIVITY, SODIUM, POTASSIUM, CALCIUM, MAGNESIUM, CARBONATE, BICARBONATE, CHLORIDE, PHOSPHOROUS, NITRATE NO3, SULFATE SO4, BORON, IRON, TOTAL DISSOLVED SOLIDS, SODIUM ABSORPTION RATIO, AND HARDNESS. IF THE WATER IS DETERMINED SUITABLE CONTINUE IRRIGATION INSTALLATION. IF THE WATER QUALITY IS UNSUITABLE, DO NOT PROCEED WITHOUT WRITTEN DIRECTION FROM THE OWNER/OWNER'S REPRESENTATIVE.  
4. IF A HIGH IRON CONTENT (OR OTHER STAIN PRODUCING COMPOUND) IS DETECTED, ADVISE THE OWNER/OWNER'S REPRESENTATIVE. DO NOT PROCEED WITHOUT WRITTEN PERMISSION. IF A CHEMICAL INJECTION SYSTEM IS REQUIRED BY THE OWNER, IT MUST BE DIRECTED BY THE OWNER AND INSTALLED BY THE PUMP SYSTEM MANUFACTURER.  
5. THE WELL CASING SHALL BE GALVANIZED STEEL PIPE (SIZED PER PLAN).  
6. THE PUMP DROP PIPE SHALL BE 2" CERTA LOCK PVC PIPE.  
7. PRIOR TO INSTALLING ANY IRRIGATION SYSTEM COMPONENTS, THE CONTRACTOR SHALL OBTAIN A WATER SAMPLE FROM THE PROPOSED WATER SUPPLY. CONDUCT A PARTICLE SIZE AND COUNT ANALYSIS ON THE SAMPLE USING THE SERVICES OF A REPUTABLE LAB CERTIFIED IN SUCH ANALYSES. SUBMIT THE TEST RESULTS TO THE OWNER/OWNER'S REPRESENTATIVE FOR REVIEW AND APPROVAL. DO NOT PROCEED FURTHER WITH SYSTEM INSTALLATION UNTIL GIVEN WRITTEN APPROVAL TO DO SO. IF CONTRACTOR DOES NOT COMPLY WITH THIS REQUIREMENT, ANY COSTS TO MAKE THE IRRIGATION SYSTEM OPERATE AS REQUIRED (WHICH WOULD NOT HAVE BEEN INCURRED HAD THESE REQUIREMENTS BEEN COMPLIED WITH), WILL BE THE RESPONSIBILITY OF THE CONTRACTOR.  
8. THE FUTURE INTENDED IRRIGATION WATER SOURCE IS RECLAIMED WATER IF IT BECOMES AVAILABLE. ALL IRRIGATION MATERIAL SHALL BE COLOR CODED 'PANTONE' PURPLE' AS REQUIRED BY FLORIDA DEPARTMENT OF ENVIRONMENTAL PROTECTION.

CONTROL NOTES:  
1. CONTRACTOR TO PROGRAM THE CONTROLLER(S) TO RUN BUBBLER AND SHRUB ZONES TWO AT A TIME (BUBBLER WITH BUBBLER AND SHRUB WITH SHRUB) TO MAINTAIN FLOW ABOVE THE PUMP'S MINIMUM 5 GPM FLOW AND BELOW 65 GPM.

IRRIGATION LEGEND

▼

RB1804-SAM-1404 FLOOD BUBBLES W/NP COVER0.25 GPM @ 30 PSI

⊙

RB1806-SAM-PRS-30 W/HUNTER MPRSS5300.44 GPM @ 40 PSI

Ⓜ

RB1806-SAM-PRS-30 W/ HUNTER MP1000adj. arc 90°-210°0.19-0.43 GPM @ 40 PSI

Ⓢ

RB1806-SAM-PRS-30 W/HUNTER MP10003600.37 GPM @ 40 PSI

Ⓚ

RB1806-SAM-PRS-30 W/HUNTER MP2000adj. arc 90°-210°0.40-1.10 GPM @ 40 PSI

Ⓡ

RB1806-SAM-PRS-30 W/HUNTER MP20003601.47 GPM @ 40 PSI

Ⓟ

RB1806-SAM-PRS-30 W/HUNTER MP3000adj. arc 90°-210°0.86-2.12 GPM @ 40 PSI

⦿

RB PEB SERIES RCV with flow control

WP

SULLIVAN ELECTRIC 5HP

P.O.C.

WELL POINT - 4" SHALLOW WELL - 100FT MAX DEPTH

—

CLASS 200 PANTONE PURPLE PVC LATERAL LINE W/SCH 40 SOLVENT WELD PVC FITTING (SIZE PER PLAN MIN. PIPE SIZE 3/4")

---

CLASS 200 PANTONE PURPLE PVC GASKETED 'O' RING MAINLINE W/LEEMKO DUCTILE IRON FITTING WITH MECHANICAL JOIN RESTRAINTS (SIZE PER PLAN)

----

IRRIGATION PIPE SLEEVE - CLASS 200 W/SCH 40 SOLVENT-WELD PVC FITTING

—

SCH40 GREY PVC CONDUIT W/SCH0 SOLVENT-WELD PVC FITTING

⌵

NIBCO P-619-RW MAINLINE ISO VALVE

ACC

HUNTER ACC 18STATION CONTROLLER

Ⓡ

HUNTER RFC POLE MOUNTED

FS

DATA INDUSTRIES MODEL #220 BR.

BF

FEBCO RPZ BACKFLOW PREVENTER

SLEEVE SIZE SCHEDULE

PIPE SIZE (CLASS 200)	SLEEVE SIZE (SCHEDULE 40)
3/4"	1-1/2"
1"	2"
1-1/4"	2-1/2"
1-1/2"	3"
2"	4"
2-1/2"	6"
3, 4"	6"

NOTES  
1. MAINLINE HAS BEEN SHOWN FOR CLARITY ONLY. MAINLINE SHALL BE LOCATED WITHIN THE ROADWAY MEADIAN.  
2. PIPE SLEEVES SHALL ALLOW FOR IRRIGATION PIPING AND THEIR RELATED COUPLINGS TO EASILY SLIDE THROUGH SLEEVING PIPE. EXTEND SLEEVES 18 INCHES BEYOND EDGES OF PAVING. REFER TO SLEEVE SIZE SCHEDULE.

ADDENDUM 2

NORTH

040  
SCALE FEET

REVISIONS

DESCRIPTION	DATE	BY	DESCRIPTION
-------------	------	----	-------------

Kimley»Horn

MATTHEW T. FRANKO, P.L.A. No. 6667292  
445 24TH STREET, SUITE 200  
VERO BEACH, FL 32960  
(772) 794-4100  
REGISTRY No. 696

INDIAN RIVER COUNTY

BOARD OF COUNTY COMMISSIONERS

66th AVENUE FROM 69th STREET  
TO SR-510/85th STREET

66th AVENUE

IRRIGATION PLAN

SHEET NO.

LD-31

3/24/2023 9:15 am K:\VRR\_Roadway\470.3504\1\Add\Phase II Construction Plans\Landscape\LD-123 IRRIGATION PLAN.dwg

THE OFFICIAL RECORD OF THIS SHEET IS THE ELECTRONIC FILE DIGITALLY SIGNED AND SEALED UNDER RULE 6B05-23.004, F.A.C.



MATCHLINE STA. 465+00.00

MATCHLINE STA. 470+50.00

NOTES:  
1. CONTRACTOR TO PROVIDE NEW WELL UP TO 100' DEEP, WITH DIAMETER AS SPECIFIED. PROVIDE A LINE ITEM 'PER FOOT' COST FOR EACH ADDITIONAL FOOT OF DEPTH, IF NEEDED. CONTRACTOR SHALL NOT DRILL THE WELL DEEPER THAN 100' WITHOUT RECEIVING PRIOR WRITTEN AUTHORIZATION. IF PRIOR AUTHORIZATION IS NOT OBTAINED, IN WRITING, NO ADDITIONAL MONIES WILL BE PAID.  
2. AFTER THE WELL IS DRILLED, A STEP TEST MUST BE PERFORMED ON THE WELL TO VERIFY THE WELL CAN PRODUCE THE REQUIRED VOLUME OF WATER ON A CONTINUAL BASIS. THE STEP TEST MUST LAST 8 HOURS WITH WATER LEVEL MEASURED EACH HALF HOUR. PEAK DEMAND IS THE GPM IDENTIFIED IN THE POC NOTE ON THE NOTES SHEET:  
HOURS 1-2 - PUMP AT 50% OF PEAK DEMAND  
HOURS 3-4 - PUMP AT 75% OF PEAK DEMAND  
HOURS 5-6 - PUMP AT 100% PEAK DEMAND  
HOURS 7-8 - PUMP AT 125% OF PEAK DEMAND  
THE RESULTS OF THIS TEST MUST BE APPROVED BY THE OWNER/OWNERS REPRESENTATIVE PRIOR TO THE INSTALLATION OF THE PUMP OR IRRIGATION SYSTEM COMPONENTS. IF THE CONTRACTOR DOES NOT FOLLOW THESE REQUIREMENTS AND THE WELL PROVES TO BE INSUFFICIENT, THE CONTRACTOR BEARS 100% OF THE RESPONSIBILITY AND COSTS TO CORRECT/MODIFY THE SYSTEM TO ACCOMMODATE THE EVENTUAL WATER SOURCE.  
3. AFTER DRILLING THE WELL, CHECK THE WATER QUALITY TO ENSURE IT IS SUITABLE FOR LANDSCAPE PLANTINGS. USE THE SERVICES OF A REPUTABLE, LICENSED LABORATORY ONLY. WATER QUALITY TESTING MUST INCLUDE pH, CONDUCTIVITY, SODIUM, POTASSIUM, CALCIUM, MAGNESIUM, CARBONATE, BICARBONATE, CHLORIDE, PHOSPHOROUS, NITRATE NO3, SULFATE SO4, BORON, IRON, TOTAL DISSOLVED SOLIDS, SODIUM ABSORPTION RATIO, AND HARDNESS. IF THE WATER IS DETERMINED SUITABLE CONTINUE IRRIGATION INSTALLATION. IF THE WATER QUALITY IS UNSUITABLE, DO NOT PROCEED WITHOUT WRITTEN DIRECTION FROM THE OWNER/OWNER'S REPRESENTATIVE.  
4. IF A HIGH IRON CONTENT (OR OTHER STAIN PRODUCING COMPOUND) IS DETECTED, ADVISE THE OWNER/OWNER'S REPRESENTATIVE. DO NOT PROCEED WITHOUT WRITTEN PERMISSION. IF A CHEMICAL INJECTION SYSTEM IS REQUIRED BY THE OWNER, IT MUST BE DIRECTED BY THE OWNER AND INSTALLED BY THE PUMP SYSTEM MANUFACTURER.  
5. THE WELL CASING SHALL BE GALVANIZED STEEL PIPE (SIZED PER PLAN).  
6. THE PUMP DROP PIPE SHALL BE 2" CERTA LOCK PVC PIPE.  
7. PRIOR TO INSTALLING ANY IRRIGATION SYSTEM COMPONENTS, THE CONTRACTOR SHALL OBTAIN A WATER SAMPLE FROM THE PROPOSED WATER SUPPLY. CONDUCT A PARTICLE SIZE AND COUNT ANALYSIS ON THE SAMPLE USING THE SERVICES OF A REPUTABLE LAB CERTIFIED IN SUCH ANALYSES. SUBMIT THE TEST RESULTS TO THE OWNER/OWNER'S REPRESENTATIVE FOR REVIEW AND APPROVAL. DO NOT PROCEED FURTHER WITH SYSTEM INSTALLATION UNTIL GIVEN WRITTEN APPROVAL TO DO SO. IF CONTRACTOR DOES NOT COMPLY WITH THIS REQUIREMENT, ANY COSTS TO MAKE THE IRRIGATION SYSTEM OPERATE AS REQUIRED (WHICH WOULD NOT HAVE BEEN INCURRED HAD THESE REQUIREMENTS BEEN COMPLIED WITH), WILL BE THE RESPONSIBILITY OF THE CONTRACTOR.  
8. THE FUTURE INTENDED IRRIGATION WATER SOURCE IS RECLAIMED WATER IF IT BECOMES AVAILABLE. ALL IRRIGATION MATERIAL SHALL BE COLOR CODED 'PANTONE' PURPLE' AS REQUIRED BY FLORIDA DEPARTMENT OF ENVIRONMENTAL PROTECTION.  
CONTROL NOTES:  
1. CONTRACTOR TO PROGRAM THE CONTROLLER(S) TO RUN BUBBLER AND SHRUB ZONES TWO AT A TIME (BUBBLER WITH BUBBLER AND SHRUB WITH SHRUB) TO MAINTAIN FLOW ABOVE THE PUMP'S MINIMUM 5 GPM FLOW AND BELOW 65 GPM.

IRRIGATION LEGEND

▼

RB1804-SAM-1404 FLOOD BUBBLES W/NP COVER0.25 GPM @ 30 PSI

⊙

RB1806-SAM-PRS-30 W/HUNTER MPRSS5300.44 GPM @ 40 PSI

Ⓜ

RB1806-SAM-PRS-30 W/ HUNTER MP1000adj. arc 90°-210°0.19-0.43 GPM @ 40 PSI

Ⓢ

RB1806-SAM-PRS-30 W/HUNTER MP10003600.37 GPM @ 40 PSI

Ⓚ

RB1806-SAM-PRS-30 W/HUNTER MP2000adj. arc 90°-210°0.40-1.10 GPM @ 40 PSI

Ⓡ

RB1806-SAM-PRS-30 W/HUNTER MP20003601.47 GPM @ 40 PSI

Ⓟ

RB1806-SAM-PRS-30 W/HUNTER MP3000adj. arc 90°-210°0.86-2.12 GPM @ 40 PSI

⦿

RB PEB SERIES RCV with flow control

Ⓜ

WP SULLIVAN ELECTRIC 5HP

Ⓜ

P.O.C. WELL POINT - 4" SHALLOW WELL - 100FT MAX DEPTH

—

CLASS 200 PANTONE PURPLE PVC LATERAL LINE

—

W/SCH 40 SOLVENT WELD PVC FITTING (SIZE PER PLAN MIN. PIPE SIZE 3/4")

—

CLASS 200 PANTONE PURPLE PVC GASKETED 'O' RING MAINLINE W/LEEMKO DUCTILE IRON FITTING WITH MECHANICAL JOIN RESTRAINTS (SIZE PER PLAN)

---

IRRIGATION PIPE SLEEVE - CLASS 200 W/SCH 40 SOLVENT-WELD PVC FITTING

---

SCH40 GREY PVC CONDUIT W/SCH0 SOLVENT-WELD PVC FITTING

Ⓜ

NIBCO P-619-RW MAINLINE ISO VALVE

Ⓜ

ACC HUNTER ACC 18STATION CONTROLLER

Ⓡ

HUNTER RFC POLE MOUNTED

Ⓢ

DATA INDUSTRIES MODEL #220 BR.

Ⓜ

FEBCO RPZ BACKFLOW PREVENTER

SLEEVE SIZE SCHEDULE

PIPE SIZE (CLASS 200)	SLEEVE SIZE (SCHEDULE 40)
3/4"	1-1/2"
1"	2"
1-1/4"	2-1/2"
1-1/2"	3"
2"	4"
2-1/2"	6"
3, 4"	6"

NOTES

1. MAINLINE HAS BEEN SHOWN FOR CLARITY ONLY. MAINLINE SHALL BE LOCATED WITHIN THE ROADWAY MEADIAN.  
2. PIPE SLEEVES SHALL ALLOW FOR IRRIGATION PIPING AND THEIR RELATED COUPLINGS TO EASILY SLIDE THROUGH SLEEVING PIPE. EXTEND SLEEVES 18 INCHES BEYOND EDGES OF PAVING. REFER TO SLEEVE SIZE SCHEDULE.

ADDENDUM 2

NORTH

040

SCALEFEET

REVISIONS

DESCRIPTION	DATE	BY	DESCRIPTION

Kimley»Horn

MATTHEW T. FRANKO, P.L.A. No. 6667292  
445 24TH STREET, SUITE 200  
VERO BEACH, FL 32960  
(772) 794-4100  
REGISTRY No: 696

INDIAN RIVER COUNTY

BOARD OF COUNTY COMMISSIONERS

66th AVENUE FROM 69th STREET  
TO SR-510/85th STREET

66th AVENUE

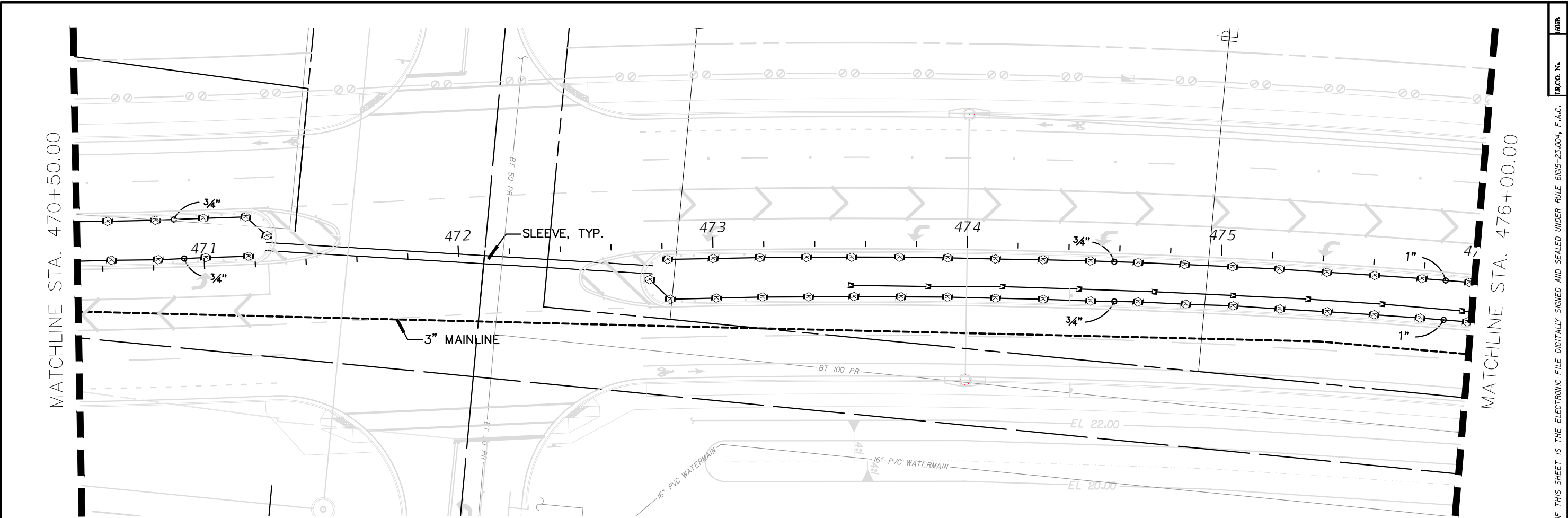
IRRIGATION PLAN

SHEET NO.

LD-32

3/24/2023 9:16 am K:\RRR\_Roadway\47035041\Cadd\Phase II Construction Plans\landscape\LD-124 IRRIGATION PLAN.dwg

THE OFFICIAL RECORD OF THIS SHEET IS THE ELECTRONIC FILE DIGITALLY SIGNED AND SEALED UNDER RULE 6805-23.004, F.A.C.



- NOTES:**
- CONTRACTOR TO PROVIDE NEW WELL UP TO 100' DEEP, WITH DIAMETER AS SPECIFIED. PROVIDE A LINE ITEM 'PER FOOT' COST FOR EACH ADDITIONAL FOOT OF DEPTH, IF NEEDED. CONTRACTOR SHALL NOT DRILL THE WELL DEEPER THAN 100' WITHOUT RECEIVING PRIOR WRITTEN AUTHORIZATION. IF PRIOR AUTHORIZATION IS NOT OBTAINED, IN WRITING, NO ADDITIONAL MONIES WILL BE PAID.
  - AFTER THE WELL IS DRILLED, A STEP TEST MUST BE PERFORMED ON THE WELL TO VERIFY THE WELL CAN PRODUCE THE REQUIRED VOLUME OF WATER ON A CONTINUAL BASIS. THE STEP TEST MUST LAST 8 HOURS WITH WATER LEVEL MEASURED EACH HALF HOUR. PEAK DEMAND IS THE GPM IDENTIFIED IN THE POC NOTE ON THE NOTES SHEET:  
HOURS 1-2 - PUMP AT 50% OF PEAK DEMAND  
HOURS 3-4 - PUMP AT 75% OF PEAK DEMAND  
HOURS 5-6 - PUMP AT 100% PEAK DEMAND  
HOURS 7-8 - PUMP AT 125% OF PEAK DEMAND  
THE RESULTS OF THIS TEST MUST BE APPROVED BY THE OWNER/OWNERS REPRESENTATIVE PRIOR TO THE INSTALLATION OF THE PUMP OR IRRIGATION SYSTEM COMPONENTS. IF THE CONTRACTOR DOES NOT FOLLOW THESE REQUIREMENTS AND THE WELL PROVES TO BE INSUFFICIENT, THE CONTRACTOR BEARS 100% OF THE RESPONSIBILITY AND COSTS TO CORRECT/MODIFY THE SYSTEM TO ACCOMMODATE THE EVENTUAL WATER SOURCE.
  - AFTER DRILLING THE WELL, CHECK THE WATER QUALITY TO ENSURE IT IS SUITABLE FOR LANDSCAPE PLANTINGS. USE THE SERVICES OF A REPUTABLE, LICENSED LABORATORY ONLY. WATER QUALITY TESTING MUST INCLUDE pH, CONDUCTIVITY, SODIUM, POTASSIUM, CALCIUM, MAGNESIUM, CARBONATE, BICARBONATE, CHLORIDE, PHOSPHOROUS, NITRATE NO3, SULFATE SO4, BORON, IRON, TOTAL DISSOLVED SOLIDS, SODIUM ABSORPTION RATIO, AND HARDNESS. IF THE WATER IS DETERMINED SUITABLE CONTINUE IRRIGATION INSTALLATION. IF THE WATER QUALITY IS UNSUITABLE, DO NOT PROCEED WITHOUT WRITTEN DIRECTION FROM THE OWNER/OWNER'S REPRESENTATIVE.
  - IF A HIGH IRON CONTENT (OR OTHER STAIN PRODUCING COMPOUND) IS DETECTED, ADVISE THE OWNER/OWNER'S REPRESENTATIVE. DO NOT PROCEED WITHOUT WRITTEN PERMISSION. IF A CHEMICAL INJECTION SYSTEM IS REQUIRED BY THE OWNER, IT MUST BE DIRECTED BY THE OWNER AND INSTALLED BY THE PUMP SYSTEM MANUFACTURER.
  - THE WELL CASING SHALL BE GALVANIZED STEEL PIPE (SIZED PER PLAN).
  - THE PUMP DROP PIPE SHALL BE 2" CERTA LOCK PVC PIPE.
  - PRIOR TO INSTALLING ANY IRRIGATION SYSTEM COMPONENTS, THE CONTRACTOR SHALL OBTAIN A WATER SAMPLE FROM THE PROPOSED WATER SUPPLY. CONDUCT A PARTICLE SIZE AND COUNT ANALYSIS ON THE SAMPLE USING THE SERVICES OF A REPUTABLE LAB CERTIFIED IN SUCH ANALYSES. SUBMIT THE TEST RESULTS TO THE OWNER/OWNER'S REPRESENTATIVE FOR REVIEW AND APPROVAL. DO NOT PROCEED FURTHER WITH SYSTEM INSTALLATION UNTIL GIVEN WRITTEN APPROVAL TO DO SO. IF CONTRACTOR DOES NOT COMPLY WITH THIS REQUIREMENT, ANY COSTS TO MAKE THE IRRIGATION SYSTEM OPERATE AS REQUIRED (WHICH WOULD NOT HAVE BEEN INCURRED HAD THESE REQUIREMENTS BEEN COMPLIED WITH), WILL BE THE RESPONSIBILITY OF THE CONTRACTOR.
  - THE FUTURE INTENDED IRRIGATION WATER SOURCE IS RECLAIMED WATER IF IT BECOMES AVAILABLE. ALL IRRIGATION MATERIAL SHALL BE COLOR CODED 'PANTONE PURPLE' AS REQUIRED BY FLORIDA DEPARTMENT OF ENVIRONMENTAL PROTECTION.
- CONTROL NOTES:**
- CONTRACTOR TO PROGRAM THE CONTROLLER(S) TO RUN BUBBLER AND SHRUB ZONES TWO AT A TIME (BUBBLER WITH BUBBLER AND SHRUB WITH SHRUB) TO MAINTAIN FLOW ABOVE THE PUMP'S MINIMUM 5 GPM FLOW AND BELOW 65 GPM.

IRRIGATION LEGEND

- |        |   |                        |
|--------|---|------------------------|
| ▼      | RB1804-SAM-1404 FLOOD BUBBLES W/NP COVER  | 0.25 GPM @ 30 PSI      |
| ⊙      | RB1806-SAM-PRS-30 W/HUNTER MPRSS530   | 0.44 GPM @ 40 PSI      |
| Ⓜ      | RB1806-SAM-PRS-30 W/ HUNTER MP1000<br>adj. arc 90°-210°   | 0.19-0.43 GPM @ 40 PSI |
| Ⓢ      | RB1806-SAM-PRS-30 W/HUNTER MP1000360  | 0.37 GPM @ 40 PSI      |
| Ⓚ      | RB1806-SAM-PRS-30 W/HUNTER MP2000<br>adj. arc 90°-210°  | 0.40-1.10 GPM @ 40 PSI |
| Ⓡ      | RB1806-SAM-PRS-30 W/HUNTER MP2000360  | 1.47 GPM @ 40 PSI      |
| Ⓟ      | RB1806-SAM-PRS-30 W/HUNTER MP3000<br>adj. arc 90°-210°  | 0.86-2.12 GPM @ 40 PSI |
| ⊙      | RB PEB SERIES RCV<br>with flow control  |                        |
| WP     | SULLIVAN ELECTRIC 5HP   |                        |
| P.O.C. | WELL POINT - 4" SHALLOW WELL - 100FT MAX DEPTH  |                        |
| —      | CLASS 200 PANTONE PURPLE PVC LATERAL LINE<br>W/SCH 40 SOLVENT WELD PVC FITTING (SIZE PER PLAN<br>MIN. PIPE SIZE 3/4")                       |                        |
| —      | CLASS 200 PANTONE PURPLE PVC GASKETED 'O' RING<br>MAINLINE W/LEEMKO DUCTILE IRON FITTING WITH MECHANICAL<br>JOIN RESTRAINTS (SIZE PER PLAN) |                        |
| ---    | IRRIGATION PIPE SLEEVE - CLASS 200 W/SCH 40<br>SOLVENT-WELD PVC FITTING   |                        |
| ---    | SCH40 GREY PVC CONDUIT W/SCH0 SOLVENT-WELD PVC FITTING  |                        |
| ⌵      | NIBCO P-619-RW MAINLINE ISO VALVE   |                        |
| ACC    | HUNTER ACC 18STATION CONTROLLER   |                        |
| Ⓡ      | HUNTER RFC POLE MOUNTED   |                        |
| FS     | DATA INDUSTRIES MODEL #220 BR.  |                        |
| BF     | FEBCO RPZ BACKFLOW PREVENTER  |                        |

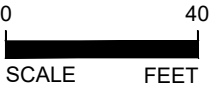
SLEEVE SIZE SCHEDULE

PIPE SIZE (CLASS 200)	SLEEVE SIZE (SCHEDULE 40)
3/4"	1-1/2"
1"	2"
1-1/4"	2-1/2"
1-1/2"	3"
2"	4"
2-1/2"	6"
3, 4"	6"

NOTES

- MAINLINE HAS BEEN SHOWN FOR CLARITY ONLY. MAINLINE SHALL BE LOCATED WITHIN THE ROADWAY MEADIAN.
- PIPE SLEEVES SHALL ALLOW FOR IRRIGATION PIPING AND THEIR RELATED COUPLINGS TO EASILY SLIDE THROUGH SLEEVING PIPE. EXTEND SLEEVES 18 INCHES BEYOND EDGES OF PAVING. REFER TO SLEEVE SIZE SCHEDULE.

ADDENDUM 2

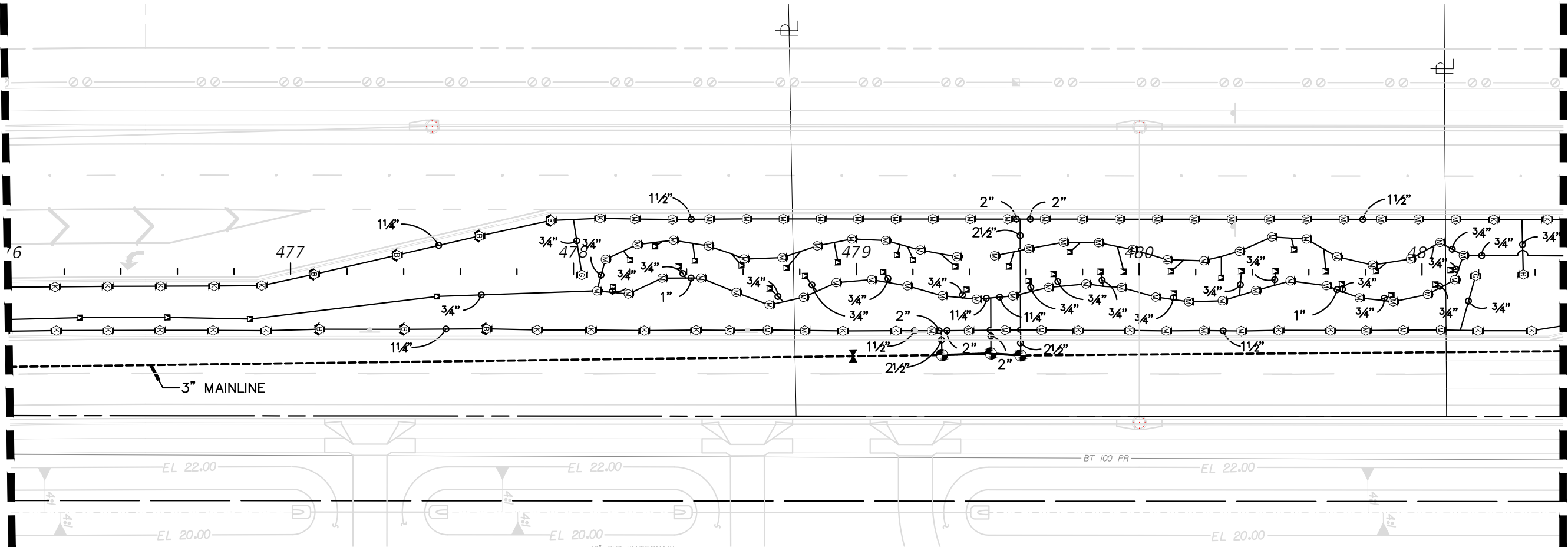


REVISIONS					Kimley»Horn	INDIAN RIVER COUNTY BOARD OF COUNTY COMMISSIONERS 66th AVENUE FROM 69th STREET TO SR-510/85th STREET	66th AVENUE IRRIGATION PLAN	SHEET NO.  LD-33
DESCRIPTION	DATE	BY	DESCRIPTION					
					MATTHEW T. FRANKO, P.L.A. No. 6667292 445 24TH STREET, SUITE 200 VERO BEACH, FL 32960 (772) 794-4100 REGISTRY No: 696			



MATCHLINE STA. 476+00.00

MATCHLINE STA. 481+50.00



NOTES:

- CONTRACTOR TO PROVIDE NEW WELL UP TO 100' DEEP, WITH DIAMETER AS SPECIFIED. PROVIDE A LINE ITEM 'PER FOOT' COST FOR EACH ADDITIONAL FOOT OF DEPTH. IF NEEDED. CONTRACTOR SHALL NOT DRILL THE WELL DEEPER THAN 100' WITHOUT RECEIVING PRIOR WRITTEN AUTHORIZATION. IF PRIOR AUTHORIZATION IS NOT OBTAINED, IN WRITING, NO ADDITIONAL MONIES WILL BE PAID.
- AFTER THE WELL IS DRILLED, A STEP TEST MUST BE PERFORMED ON THE WELL TO VERIFY THE WELL CAN PRODUCE THE REQUIRED VOLUME OF WATER ON A CONTINUAL BASIS. THE STEP TEST MUST LAST 8 HOURS WITH WATER LEVEL MEASURED EACH HALF HOUR. PEAK DEMAND IS THE GPM IDENTIFIED IN THE POC NOTE ON THE NOTES SHEET:  
HOURS 1-2 - PUMP AT 50% OF PEAK DEMAND  
HOURS 3-4 - PUMP AT 75% OF PEAK DEMAND  
HOURS 5-6 - PUMP AT 100% PEAK DEMAND  
HOURS 7-8 - PUMP AT 125% OF PEAK DEMAND  
THE RESULTS OF THIS TEST MUST BE APPROVED BY THE OWNER/OWNERS REPRESENTATIVE PRIOR TO THE INSTALLATION OF THE PUMP OR IRRIGATION SYSTEM COMPONENTS. IF THE CONTRACTOR DOES NOT FOLLOW THESE REQUIREMENTS AND THE WELL PROVES TO BE INSUFFICIENT, THE CONTRACTOR BEARS 100% OF THE RESPONSIBILITY AND COSTS TO CORRECT/MODIFY THE SYSTEM TO ACCOMMODATE THE EVENTUAL WATER SOURCE.
- AFTER DRILLING THE WELL, CHECK THE WATER QUALITY TO ENSURE IT IS SUITABLE FOR LANDSCAPE PLANTINGS. USE THE SERVICES OF A REPUTABLE, LICENSED LABORATORY ONLY. WATER QUALITY TESTING MUST INCLUDE pH, CONDUCTIVITY, SODIUM, POTASSIUM, CALCIUM, MAGNESIUM, CARBONATE, BICARBONATE, CHLORIDE, PHOSPHOROUS, NITRATE NO3, SULFATE SO4, BORON, IRON, TOTAL DISSOLVED SOLIDS, SODIUM ABSORPTION RATIO, AND HARDNESS. IF THE WATER IS DETERMINED SUITABLE CONTINUE IRRIGATION INSTALLATION. IF THE WATER QUALITY IS UNSUITABLE, DO NOT PROCEED WITHOUT WRITTEN DIRECTION FROM THE OWNER/OWNER'S REPRESENTATIVE.
- IF A HIGH IRON CONTENT (OR OTHER STAIN PRODUCING COMPOUND) IS DETECTED, ADVISE THE OWNER/OWNER'S REPRESENTATIVE. DO NOT PROCEED WITHOUT WRITTEN PERMISSION. IF A CHEMICAL INJECTION SYSTEM IS REQUIRED BY THE OWNER, IT MUST BE DIRECTED BY THE OWNER AND INSTALLED BY THE PUMP SYSTEM MANUFACTURER.
- THE WELL CASING SHALL BE GALVANIZED STEEL PIPE (SIZED PER PLAN).
- THE PUMP DROP PIPE SHALL BE 2" CERTA LOCK PVC PIPE.
- PRIOR TO INSTALLING ANY IRRIGATION SYSTEM COMPONENTS, THE CONTRACTOR SHALL OBTAIN A WATER SAMPLE FROM THE PROPOSED WATER SUPPLY. CONDUCT A PARTICLE SIZE AND COUNT ANALYSIS ON THE SAMPLE USING THE SERVICES OF A REPUTABLE LAB CERTIFIED IN SUCH ANALYSES. SUBMIT THE TEST RESULTS TO THE OWNER/OWNER'S REPRESENTATIVE FOR REVIEW AND APPROVAL. DO NOT PROCEED FURTHER WITH SYSTEM INSTALLATION UNTIL GIVEN WRITTEN APPROVAL TO DO SO. IF CONTRACTOR DOES NOT COMPLY WITH THIS REQUIREMENT, ANY COSTS TO MAKE THE IRRIGATION SYSTEM OPERATE AS REQUIRED (WHICH WOULD NOT HAVE BEEN INCURRED HAD THESE REQUIREMENTS BEEN COMPLIED WITH), WILL BE THE RESPONSIBILITY OF THE CONTRACTOR.
- THE FUTURE INTENDED IRRIGATION WATER SOURCE IS RECLAIMED WATER IF IT BECOMES AVAILABLE. ALL IRRIGATION MATERIAL SHALL BE COLOR CODED 'PANTONE' PURPLE' AS REQUIRED BY FLORIDA DEPARTMENT OF ENVIRONMENTAL PROTECTION.

CONTROL NOTES:

- CONTRACTOR TO PROGRAM THE CONTROLLER(S) TO RUN BUBBLER AND SHRUB ZONES TWO AT A TIME (BUBBLER WITH BUBBLER AND SHRUB WITH SHRUB) TO MAINTAIN FLOW ABOVE THE PUMP'S MINIMUM 5 GPM FLOW AND BELOW 65 GPM.

IRRIGATION LEGEND

▼	RB1804-SAM-1404 FLOOD BUBBLES W/NP COVER	0.25 GPM @ 30 PSI
⊙	RB1806-SAM-PRS-30 W/HUNTER MPRSS530	0.44 GPM @ 40 PSI
Ⓜ	RB1806-SAM-PRS-30 W/ HUNTER MP1000 adj. arc 90°-210°	0.19-0.43 GPM @ 40 PSI
Ⓢ	RB1806-SAM-PRS-30 W/HUNTER MP1000360	0.37 GPM @ 40 PSI
Ⓚ	RB1806-SAM-PRS-30 W/HUNTER MP2000 adj. arc 90°-210°	0.40-1.10 GPM @ 40 PSI
Ⓡ	RB1806-SAM-PRS-30 W/HUNTER MP2000360	1.47 GPM @ 40 PSI
Ⓟ	RB1806-SAM-PRS-30 W/HUNTER MP3000 adj. arc 90°-210°	0.86-2.12 GPM @ 40 PSI
⊙	RB PEB SERIES RCV with flow control	
WP	SULLIVAN ELECTRIC 5HP	
P.O.C.	WELL POINT - 4" SHALLOW WELL - 100FT MAX DEPTH	
—	CLASS 200 PANTONE PURPLE PVC LATERAL LINE W/SCH 40 SOLVENT WELD PVC FITTING (SIZE PER PLAN MIN. PIPE SIZE 3/4")	
—	CLASS 200 PANTONE PURPLE PVC GASKETED 'O' RING MAINLINE W/LEEMKO DUCTILE IRON FITTING WITH MECHANICAL JOIN RESTRAINTS (SIZE PER PLAN)	
---	IRRIGATION PIPE SLEEVE - CLASS 200 W/SCH 40 SOLVENT-WELD PVC FITTING	
---	SCH40 GREY PVC CONDUIT W/SCHO SOLVENT-WELD PVC FITTING	
⊗	NIBCO P-619-RW MAINLINE ISO VALVE	
ACC	HUNTER ACC 18STATION CONTROLLER	
Ⓡ	HUNTER RFC POLE MOUNTED	
FS	DATA INDUSTRIES MODEL #220 BR.	
BF	FEBCO RPZ BACKFLOW PREVENTER	

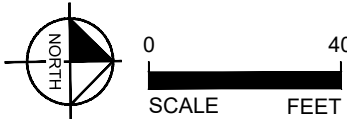
SLEEVE SIZE SCHEDULE

PIPE SIZE (CLASS 200)	SLEEVE SIZE (SCHEDULE 40)
3/4"	1-1/2"
1"	2"
1-1/4"	2-1/2"
1-1/2"	3"
2"	4"
2-1/2"	6"
3, 4"	6"

NOTES

- MAINLINE HAS BEEN SHOWN FOR CLARITY ONLY. MAINLINE SHALL BE LOCATED WITHIN THE ROADWAY MEADIAN.
- PIPE SLEEVES SHALL ALLOW FOR IRRIGATION PIPING AND THEIR RELATED COUPLINGS TO EASILY SLIDE THROUGH SLEEVING PIPE. EXTEND SLEEVES 18 INCHES BEYOND EDGES OF PAVING. REFER TO SLEEVE SIZE SCHEDULE.

ADDENDUM 2



R E V I S I O N S				
	DESCRIPTION	DATE	BY	DESCRIPTION

**Kimley»Horn**

MATTHEW T. FRANKO, P.L.A. No. 6667292  
445 24TH STREET, SUITE 200  
VERO BEACH, FL 32960  
(772) 794-4100  
REGISTRY No: 696

**INDIAN RIVER COUNTY**  
**BOARD OF COUNTY COMMISSIONERS**  
**66th AVENUE FROM 69th STREET**  
**TO SR-510/85th STREET**

**66th AVENUE**  
**IRRIGATION PLAN**

SHEET  
NO.

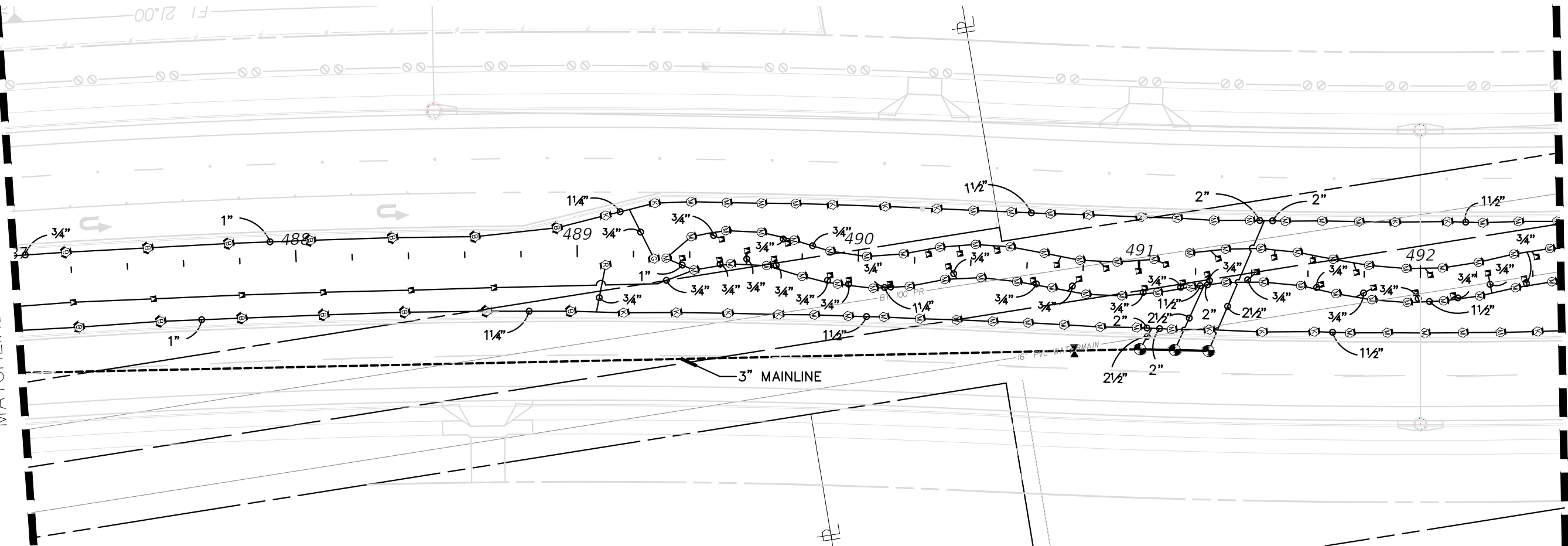
LD-34





MATCHLINE STA. 487+00.00

MATCHLINE STA. 492+50.00



#### NOTES:

- CONTRACTOR TO PROVIDE NEW WELL UP TO 100' DEEP, WITH DIAMETER AS SPECIFIED. PROVIDE A LINE ITEM 'PER FOOT' COST FOR EACH ADDITIONAL FOOT OF DEPTH. IF NEEDED. CONTRACTOR SHALL NOT DRILL THE WELL DEEPER THAN 100' WITHOUT RECEIVING PRIOR WRITTEN AUTHORIZATION. IF PRIOR AUTHORIZATION IS NOT OBTAINED, IN WRITING, NO ADDITIONAL MONIES WILL BE PAID.
- AFTER THE WELL IS DRILLED, A STEP TEST MUST BE PERFORMED ON THE WELL TO VERIFY THE WELL CAN PRODUCE THE REQUIRED VOLUME OF WATER ON A CONTINUAL BASIS. THE STEP TEST MUST LAST 8 HOURS WITH WATER LEVEL MEASURED EACH HALF HOUR. PEAK DEMAND IS THE GPM IDENTIFIED IN THE POC NOTE ON THE NOTES SHEET:  
HOURS 1-2 - PUMP AT 50% OF PEAK DEMAND  
HOURS 3-4 - PUMP AT 75% OF PEAK DEMAND  
HOURS 5-6 - PUMP AT 100% PEAK DEMAND  
HOURS 7-8 - PUMP AT 125% OF PEAK DEMAND  
THE RESULTS OF THIS TEST MUST BE APPROVED BY THE OWNER/OWNERS REPRESENTATIVE PRIOR TO THE INSTALLATION OF THE PUMP OR IRRIGATION SYSTEM COMPONENTS. IF THE CONTRACTOR DOES NOT FOLLOW THESE REQUIREMENTS AND THE WELL PROVES TO BE INSUFFICIENT, THE CONTRACTOR BEARS 100% OF THE RESPONSIBILITY AND COSTS TO CORRECT/MODIFY THE SYSTEM TO ACCOMMODATE THE EVENTUAL WATER SOURCE.
- AFTER DRILLING THE WELL, CHECK THE WATER QUALITY TO ENSURE IT IS SUITABLE FOR LANDSCAPE PLANTINGS. USE THE SERVICES OF A REPUTABLE, LICENSED LABORATORY ONLY. WATER QUALITY TESTING MUST INCLUDE pH, CONDUCTIVITY, SODIUM, POTASSIUM, CALCIUM, MAGNESIUM, CARBONATE, BICARBONATE, CHLORIDE, PHOSPHOROUS, NITRATE NO3, SULFATE SO4, BORON, IRON, TOTAL DISSOLVED SOLIDS, SODIUM ABSORPTION RATIO, AND HARDNESS. IF THE WATER IS DETERMINED SUITABLE CONTINUE IRRIGATION INSTALLATION. IF THE WATER QUALITY IS UNSUITABLE, DO NOT PROCEED WITHOUT WRITTEN DIRECTION FROM THE OWNER/OWNER'S REPRESENTATIVE.
- IF A HIGH IRON CONTENT (OR OTHER STAIN PRODUCING COMPOUND) IS DETECTED, ADVISE THE OWNER/OWNER'S REPRESENTATIVE. DO NOT PROCEED WITHOUT WRITTEN PERMISSION. IF A CHEMICAL INJECTION SYSTEM IS REQUIRED BY THE OWNER, IT MUST BE DIRECTED BY THE OWNER AND INSTALLED BY THE PUMP SYSTEM MANUFACTURER.
- THE WELL CASING SHALL BE GALVANIZED STEEL PIPE (SIZED PER PLAN).
- THE PUMP DROP PIPE SHALL BE 2" CERTA LOCK PVC PIPE.
- PRIOR TO INSTALLING ANY IRRIGATION SYSTEM COMPONENTS, THE CONTRACTOR SHALL OBTAIN A WATER SAMPLE FROM THE PROPOSED WATER SUPPLY. CONDUCT A PARTICLE SIZE AND COUNT ANALYSIS ON THE SAMPLE USING THE SERVICES OF A REPUTABLE LAB CERTIFIED IN SUCH ANALYSES. SUBMIT THE TEST RESULTS TO THE OWNER/OWNER'S REPRESENTATIVE FOR REVIEW AND APPROVAL. DO NOT PROCEED FURTHER WITH SYSTEM INSTALLATION UNTIL GIVEN WRITTEN APPROVAL TO DO SO. IF CONTRACTOR DOES NOT COMPLY WITH THIS REQUIREMENT, ANY COSTS TO MAKE THE IRRIGATION SYSTEM OPERATE AS REQUIRED (WHICH WOULD NOT HAVE BEEN INCURRED HAD THESE REQUIREMENTS BEEN COMPLIED WITH), WILL BE THE RESPONSIBILITY OF THE CONTRACTOR.
- THE FUTURE INTENDED IRRIGATION WATER SOURCE IS RECLAIMED WATER IF IT BECOMES AVAILABLE. ALL IRRIGATION MATERIAL SHALL BE COLOR CODED 'PANTONE PURPLE' AS REQUIRED BY FLORIDA DEPARTMENT OF ENVIRONMENTAL PROTECTION.

#### CONTROL NOTES:

- CONTRACTOR TO PROGRAM THE CONTROLLER(S) TO RUN BUBBLER AND SHRUB ZONES TWO AT A TIME (BUBBLER WITH BUBBLER AND SHRUB WITH SHRUB) TO MAINTAIN FLOW ABOVE THE PUMP'S MINIMUM 5 GPM FLOW AND BELOW 65 GPM.

#### IRRIGATION LEGEND

▼	RB1804-SAM-1404 FLOOD BUBBLES W/NP COVER	0.25 GPM @ 30 PSI
⊙	RB1806-SAM-PRS-30 W/HUNTER MPRSS530	0.44 GPM @ 40 PSI
Ⓜ	RB1806-SAM-PRS-30 W/ HUNTER MP1000 adj. arc 90°-210°	0.19-0.43 GPM @ 40 PSI
⊙	RB1806-SAM-PRS-30 W/HUNTER MP1000360	0.37 GPM @ 40 PSI
⊗	RB1806-SAM-PRS-30 W/HUNTER MP2000 adj. arc 90°-210°	0.40-1.10 GPM @ 40 PSI
Ⓡ	RB1806-SAM-PRS-30 W/HUNTER MP2000360	1.47 GPM @ 40 PSI
Ⓡ	RB1806-SAM-PRS-30 W/HUNTER MP3000 adj. arc 90°-210°	0.86-2.12 GPM @ 40 PSI
⊗	RB PEB SERIES RCV with flow control	
WP	SULLIVAN ELECTRIC 5HP	
P.O.C.	WELL POINT - 4" SHALLOW WELL - 100FT MAX DEPTH	
---	CLASS 200 PANTONE PURPLE PVC LATERAL LINE W/SCH 40 SOLVENT WELD PVC FITTING (SIZE PER PLAN MIN. PIPE SIZE 3/4")	
---	CLASS 200 PANTONE PURPLE PVC GASKETED 'O' RING MAINLINE W/LEEMKO DUCTILE IRON FITTING WITH MECHANICAL JOIN RESTRAINTS (SIZE PER PLAN)	
---	IRRIGATION PIPE SLEEVE - CLASS 200 W/SCH 40 SOLVENT-WELD PVC FITTING	
---	SCH40 GREY PVC CONDUIT W/SCH0 SOLVENT-WELD PVC FITTING	
⊗	NIBCO P-619-RW MAINLINE ISO VALVE	
ACC	HUNTER ACC 18STATION CONTROLLER	
Ⓡ	HUNTER RFC POLE MOUNTED	
FS	DATA INDUSTRIES MODEL #220 BR.	
BF	FEBCO RPZ BACKFLOW PREVENTER	

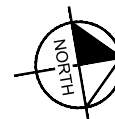
#### SLEEVE SIZE SCHEDULE

PIPE SIZE (CLASS 200)	SLEEVE SIZE (SCHEDULE 40)
3/4"	1-1/2"
1"	2"
1-1/4"	2-1/2"
1-1/2"	3"
2"	4"
2-1/2"	6"
3, 4"	6"

#### NOTES

- MAINLINE HAS BEEN SHOWN FOR CLARITY ONLY. MAINLINE SHALL BE LOCATED WITHIN THE ROADWAY MEADIAN.
- PIPE SLEEVES SHALL ALLOW FOR IRRIGATION PIPING AND THEIR RELATED COUPLINGS TO EASILY SLIDE THROUGH SLEEVING PIPE. EXTEND SLEEVES 18 INCHES BEYOND EDGES OF PAVING. REFER TO SLEEVE SIZE SCHEDULE.

ADDENDUM 2



0 40  
SCALE FEET

#### REVISIONS

DESCRIPTION	DATE	BY	DESCRIPTION

**Kimley»Horn**

MATTHEW T. FRANKO, P.L.A. No. 6667292  
445 24TH STREET, SUITE 200  
VERO BEACH, FL 32960  
(772) 794-4100  
REGISTRY No. 696

**INDIAN RIVER COUNTY**  
**BOARD OF COUNTY COMMISSIONERS**  
**66th AVENUE FROM 69th STREET**  
**TO SR-510/85th STREET**

**66th AVENUE**

**IRRIGATION PLAN**

SHEET  
NO.

LD-36

MATCHLINE STA. 492+50.00

MATCHLINE STA. 498+00.00

NOTES:

- CONTRACTOR TO PROVIDE NEW WELL UP TO 100' DEEP, WITH DIAMETER AS SPECIFIED. PROVIDE A LINE ITEM 'PER FOOT' COST FOR EACH ADDITIONAL FOOT OF DEPTH, IF NEEDED. CONTRACTOR SHALL NOT DRILL THE WELL DEEPER THAN 100' WITHOUT RECEIVING PRIOR WRITTEN AUTHORIZATION. IF PRIOR AUTHORIZATION IS NOT OBTAINED, IN WRITING, NO ADDITIONAL MONIES WILL BE PAID.
- AFTER THE WELL IS DRILLED, A STEP TEST MUST BE PERFORMED ON THE WELL TO VERIFY THE WELL CAN PRODUCE THE REQUIRED VOLUME OF WATER ON A CONTINUAL BASIS. THE STEP TEST MUST LAST 8 HOURS WITH WATER LEVEL MEASURED EACH HALF HOUR. PEAK DEMAND IS THE GPM IDENTIFIED IN THE POC NOTE ON THE NOTES SHEET:  
HOURS 1-2 - PUMP AT 50% OF PEAK DEMAND  
HOURS 3-4 - PUMP AT 75% OF PEAK DEMAND  
HOURS 5-6 - PUMP AT 100% PEAK DEMAND  
HOURS 7-8 - PUMP AT 125% OF PEAK DEMAND  
THE RESULTS OF THIS TEST MUST BE APPROVED BY THE OWNER/OWNERS REPRESENTATIVE PRIOR TO THE INSTALLATION OF THE PUMP OR IRRIGATION SYSTEM COMPONENTS. IF THE CONTRACTOR DOES NOT FOLLOW THESE REQUIREMENTS AND THE WELL PROVES TO BE INSUFFICIENT, THE CONTRACTOR BEARS 100% OF THE RESPONSIBILITY AND COSTS TO CORRECT/MODIFY THE SYSTEM TO ACCOMMODATE THE EVENTUAL WATER SOURCE.
- AFTER DRILLING THE WELL, CHECK THE WATER QUALITY TO ENSURE IT IS SUITABLE FOR LANDSCAPE PLANTINGS. USE THE SERVICES OF A REPUTABLE, LICENSED LABORATORY ONLY. WATER QUALITY TESTING MUST INCLUDE pH, CONDUCTIVITY, SODIUM, POTASSIUM, CALCIUM, MAGNESIUM, CARBONATE, BICARBONATE, CHLORIDE, PHOSPHOROUS, NITRATE NO3, SULFATE SO4, BORON, IRON, TOTAL DISSOLVED SOLIDS, SODIUM ABSORPTION RATIO, AND HARDNESS. IF THE WATER IS DETERMINED SUITABLE CONTINUE IRRIGATION INSTALLATION. IF THE WATER QUALITY IS UNSUITABLE, DO NOT PROCEED WITHOUT WRITTEN DIRECTION FROM THE OWNER/OWNER'S REPRESENTATIVE.
- IF A HIGH IRON CONTENT (OR OTHER STAIN PRODUCING COMPOUND) IS DETECTED, ADVISE THE OWNER/OWNER'S REPRESENTATIVE. DO NOT PROCEED WITHOUT WRITTEN PERMISSION. IF A CHEMICAL INJECTION SYSTEM IS REQUIRED BY THE OWNER, IT MUST BE DIRECTED BY THE OWNER AND INSTALLED BY THE PUMP SYSTEM MANUFACTURER.
- THE WELL CASING SHALL BE GALVANIZED STEEL PIPE (SIZED PER PLAN).
- THE PUMP DROP PIPE SHALL BE 2" CERTA LOCK PVC PIPE.
- PRIOR TO INSTALLING ANY IRRIGATION SYSTEM COMPONENTS, THE CONTRACTOR SHALL OBTAIN A WATER SAMPLE FROM THE PROPOSED WATER SUPPLY. CONDUCT A PARTICLE SIZE AND COUNT ANALYSIS ON THE SAMPLE USING THE SERVICES OF A REPUTABLE LAB CERTIFIED IN SUCH ANALYSES. SUBMIT THE TEST RESULTS TO THE OWNER/OWNER'S REPRESENTATIVE FOR REVIEW AND APPROVAL. DO NOT PROCEED FURTHER WITH SYSTEM INSTALLATION UNTIL GIVEN WRITTEN APPROVAL TO DO SO. IF CONTRACTOR DOES NOT COMPLY WITH THIS REQUIREMENT, ANY COSTS TO MAKE THE IRRIGATION SYSTEM OPERATE AS REQUIRED (WHICH WOULD NOT HAVE BEEN INCURRED HAD THESE REQUIREMENTS BEEN COMPLIED WITH), WILL BE THE RESPONSIBILITY OF THE CONTRACTOR.
- THE FUTURE INTENDED IRRIGATION WATER SOURCE IS RECLAIMED WATER IF IT BECOMES AVAILABLE. ALL IRRIGATION MATERIAL SHALL BE COLOR CODED 'PANTONE' PURPLE AS REQUIRED BY FLORIDA DEPARTMENT OF ENVIRONMENTAL PROTECTION.

CONTROL NOTES:

- CONTRACTOR TO PROGRAM THE CONTROLLER(S) TO RUN BUBBLER AND SHRUB ZONES TWO AT A TIME (BUBBLER WITH BUBBLER AND SHRUB WITH SHRUB) TO MAINTAIN FLOW ABOVE THE PUMP'S MINIMUM 5 GPM FLOW AND BELOW 65 GPM.

IRRIGATION LEGEND

▼	RB1804-SAM-1404 FLOOD BUBBLES W/NP COVER	0.25 GPM @ 30 PSI
⊙	RB1806-SAM-PRS-30 W/HUNTER MPRSS530	0.44 GPM @ 40 PSI
Ⓜ	RB1806-SAM-PRS-30 W/ HUNTER MP1000 adj. arc 90°-210°	0.19-0.43 GPM @ 40 PSI
⓪	RB1806-SAM-PRS-30 W/HUNTER MP1000360	0.37 GPM @ 40 PSI
Ⓚ	RB1806-SAM-PRS-30 W/HUNTER MP2000 adj. arc 90°-210°	0.40-1.10 GPM @ 40 PSI
Ⓡ	RB1806-SAM-PRS-30 W/HUNTER MP2000360	1.47 GPM @ 40 PSI
Ⓟ	RB1806-SAM-PRS-30 W/HUNTER MP3000 adj. arc 90°-210°	0.86-2.12 GPM @ 40 PSI
⊙	RB PEB SERIES RCV with flow control	⊗ NIBCO P-619-RW MAINLINE ISO VALVE
WP	SULLIVAN ELECTRIC 5HP	ACC HUNTER ACC 18STATION CONTROLLER
P.O.C.	WELL POINT - 4" SHALLOW WELL - 100FT MAX DEPTH	Ⓡ HUNTER RFC POLE MOUNTED
---	CLASS 200 PANTONE PURPLE PVC LATERAL LINE	FS DATA INDUSTRIES MODEL #220 BR.
---	W/SCH 40 SOLVENT WELD PVC FITTING (SIZE PER PLAN MIN. PIPE SIZE 3/4")	BF FEBCO RPZ BACKFLOW PREVENTER
---	CLASS 200 PANTONE PURPLE PVC GASKETED 'O' RING	
---	MAINLINE W/LEEMKO DUCTILE IRON FITTING WITH MECHANICAL JOIN RESTRAINTS (SIZE PER PLAN)	
---	IRRIGATION PIPE SLEEVE - CLASS 200 W/SCH 40	
---	SOLVENT-WELD PVC FITTING	
---	SCH40 GREY PVC CONDUIT W/SCH0 SOLVENT-WELD PVC FITTING	

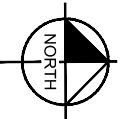
SLEEVE SIZE SCHEDULE

PIPE SIZE (CLASS 200)	SLEEVE SIZE (SCHEDULE 40)
3/4"	1-1/2"
1"	2"
1-1/4"	2-1/2"
1-1/2"	3"
2"	4"
2-1/2"	6"
3, 4"	6"

NOTES

- MAINLINE HAS BEEN SHOWN FOR CLARITY ONLY. MAINLINE SHALL BE LOCATED WITHIN THE ROADWAY MEADIAN.
- PIPE SLEEVES SHALL ALLOW FOR IRRIGATION PIPING AND THEIR RELATED COUPLINGS TO EASILY SLIDE THROUGH SLEEVING PIPE. EXTEND SLEEVES 18 INCHES BEYOND EDGES OF PAVING. REFER TO SLEEVE SIZE SCHEDULE.

ADDENDUM 2



0 40  
SCALE FEET

R E V I S I O N S				
	DESCRIPTION	DATE	BY	DESCRIPTION

**Kimley»Horn**

MATTHEW T. FRANKO, P.L.A. No. 6667292  
445 24TH STREET, SUITE 200  
VERO BEACH, FL 32960  
(772) 794-4100  
REGISTRY No: 696

**INDIAN RIVER COUNTY**  
**BOARD OF COUNTY COMMISSIONERS**  
**66th AVENUE FROM 69th STREET**  
**TO SR-510/85th STREET**

**66th AVENUE**  
**IRRIGATION PLAN**

SHEET  
NO.

LD-37



MATCHLINE STA. 498+00.00

MATCHLINE STA. 503+50.00

NOTES:

- CONTRACTOR TO PROVIDE NEW WELL UP TO 100' DEEP, WITH DIAMETER AS SPECIFIED. PROVIDE A LINE ITEM 'PER FOOT' COST FOR EACH ADDITIONAL FOOT OF DEPTH, IF NEEDED. CONTRACTOR SHALL NOT DRILL THE WELL DEEPER THAN 100' WITHOUT RECEIVING PRIOR WRITTEN AUTHORIZATION. IF PRIOR AUTHORIZATION IS NOT OBTAINED, IN WRITING, NO ADDITIONAL MONIES WILL BE PAID.
- AFTER THE WELL IS DRILLED, A STEP TEST MUST BE PERFORMED ON THE WELL TO VERIFY THE WELL CAN PRODUCE THE REQUIRED VOLUME OF WATER ON A CONTINUAL BASIS. THE STEP TEST MUST LAST 8 HOURS WITH WATER LEVEL MEASURED EACH HALF HOUR. PEAK DEMAND IS THE GPM IDENTIFIED IN THE POC NOTE ON THE NOTES SHEET:  
HOURS 1-2 - PUMP AT 50% OF PEAK DEMAND  
HOURS 3-4 - PUMP AT 75% OF PEAK DEMAND  
HOURS 5-6 - PUMP AT 100% PEAK DEMAND  
HOURS 7-8 - PUMP AT 125% OF PEAK DEMAND  
THE RESULTS OF THIS TEST MUST BE APPROVED BY THE OWNER/OWNERS REPRESENTATIVE PRIOR TO THE INSTALLATION OF THE PUMP OR IRRIGATION SYSTEM COMPONENTS. IF THE CONTRACTOR DOES NOT FOLLOW THESE REQUIREMENTS AND THE WELL PROVES TO BE INSUFFICIENT, THE CONTRACTOR BEARS 100% OF THE RESPONSIBILITY AND COSTS TO CORRECT/MODIFY THE SYSTEM TO ACCOMMODATE THE EVENTUAL WATER SOURCE.
- AFTER DRILLING THE WELL, CHECK THE WATER QUALITY TO ENSURE IT IS SUITABLE FOR LANDSCAPE PLANTINGS. USE THE SERVICES OF A REPUTABLE, LICENSED LABORATORY ONLY. WATER QUALITY TESTING MUST INCLUDE pH, CONDUCTIVITY, SODIUM, POTASSIUM, CALCIUM, MAGNESIUM, CARBONATE, BICARBONATE, CHLORIDE, PHOSPHOROUS, NITRATE NO3, SULFATE SO4, BORON, IRON, TOTAL DISSOLVED SOLIDS, SODIUM ABSORPTION RATIO, AND HARDNESS. IF THE WATER IS DETERMINED SUITABLE CONTINUE IRRIGATION INSTALLATION. IF THE WATER QUALITY IS UNSUITABLE, DO NOT PROCEED WITHOUT WRITTEN DIRECTION FROM THE OWNER/OWNER'S REPRESENTATIVE.
- IF A HIGH IRON CONTENT (OR OTHER STAIN PRODUCING COMPOUND) IS DETECTED, ADVISE THE OWNER/OWNER'S REPRESENTATIVE. DO NOT PROCEED WITHOUT WRITTEN PERMISSION. IF A CHEMICAL INJECTION SYSTEM IS REQUIRED BY THE OWNER, IT MUST BE DIRECTED BY THE OWNER AND INSTALLED BY THE PUMP SYSTEM MANUFACTURER.
- THE WELL CASING SHALL BE GALVANIZED STEEL PIPE (SIZED PER PLAN).
- THE PUMP DROP PIPE SHALL BE 2" CERTA LOCK PVC PIPE.
- PRIOR TO INSTALLING ANY IRRIGATION SYSTEM COMPONENTS, THE CONTRACTOR SHALL OBTAIN A WATER SAMPLE FROM THE PROPOSED WATER SUPPLY. CONDUCT A PARTICLE SIZE AND COUNT ANALYSIS ON THE SAMPLE USING THE SERVICES OF A REPUTABLE LAB CERTIFIED IN SUCH ANALYSES. SUBMIT THE TEST RESULTS TO THE OWNER/OWNER'S REPRESENTATIVE FOR REVIEW AND APPROVAL. DO NOT PROCEED FURTHER WITH SYSTEM INSTALLATION UNTIL GIVEN WRITTEN APPROVAL TO DO SO. IF CONTRACTOR DOES NOT COMPLY WITH THIS REQUIREMENT, ANY COSTS TO MAKE THE IRRIGATION SYSTEM OPERATE AS REQUIRED (WHICH WOULD NOT HAVE BEEN INCURRED HAD THESE REQUIREMENTS BEEN COMPLIED WITH), WILL BE THE RESPONSIBILITY OF THE CONTRACTOR.
- THE FUTURE INTENDED IRRIGATION WATER SOURCE IS RECLAIMED WATER IF IT BECOMES AVAILABLE. ALL IRRIGATION MATERIAL SHALL BE COLOR CODED 'PANTONE' PURPLE' AS REQUIRED BY FLORIDA DEPARTMENT OF ENVIRONMENTAL PROTECTION.

CONTROL NOTES:

- CONTRACTOR TO PROGRAM THE CONTROLLER(S) TO RUN BUBBLER AND SHRUB ZONES TWO AT A TIME (BUBBLER WITH BUBBLER AND SHRUB WITH SHRUB) TO MAINTAIN FLOW ABOVE THE PUMP'S MINIMUM 5 GPM FLOW AND BELOW 65 GPM.

IRRIGATION LEGEND

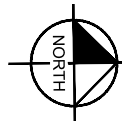
▼	RB1804-SAM-1404 FLOOD BUBBLES W/NP COVER	0.25 GPM @ 30 PSI
⊙	RB1806-SAM-PRS-30 W/HUNTER MPRSS530	0.44 GPM @ 40 PSI
Ⓜ	RB1806-SAM-PRS-30 W/ HUNTER MP1000 adj. arc 90°-210°	0.19-0.43 GPM @ 40 PSI
Ⓢ	RB1806-SAM-PRS-30 W/HUNTER MP1000360	0.37 GPM @ 40 PSI
Ⓚ	RB1806-SAM-PRS-30 W/HUNTER MP2000 adj. arc 90°-210°	0.40-1.10 GPM @ 40 PSI
Ⓡ	RB1806-SAM-PRS-30 W/HUNTER MP2000360	1.47 GPM @ 40 PSI
Ⓟ	RB1806-SAM-PRS-30 W/HUNTER MP3000 adj. arc 90°-210°	0.86-2.12 GPM @ 40 PSI
⊙	RB PEB SERIES RCV with flow control	
WP	SULLIVAN ELECTRIC 5HP	
P.O.C.	WELL POINT - 4" SHALLOW WELL - 100FT MAX DEPTH	
—	CLASS 200 PANTONE PURPLE PVC LATERAL LINE W/SCH 40 SOLVENT WELD PVC FITTING (SIZE PER PLAN MIN. PIPE SIZE 3/4")	
—	CLASS 200 PANTONE PURPLE PVC GASKETED 'O' RING MAINLINE W/LEEMKO DUCTILE IRON FITTING WITH MECHANICAL JOIN RESTRAINTS (SIZE PER PLAN)	
---	IRRIGATION PIPE SLEEVE - CLASS 200 W/SCH 40 SOLVENT-WELD PVC FITTING	
---	SCH40 GREY PVC CONDUIT W/SCH0 SOLVENT-WELD PVC FITTING	
⌵	NIBCO P-619-RW MAINLINE ISO VALVE	
ACC	HUNTER ACC 18STATION CONTROLLER	
Ⓡ	HUNTER RFC POLE MOUNTED	
FS	DATA INDUSTRIES MODEL #220 BR.	
BF	FEBCO RPZ BACKFLOW PREVENTER	

SLEEVE SIZE SCHEDULE

PIPE SIZE (CLASS 200)	SLEEVE SIZE (SCHEDULE 40)
3/4"	1-1/2"
1"	2"
1-1/4"	2-1/2"
1-1/2"	3"
2"	4"
2-1/2"	6"
3, 4"	6"

NOTES

- MAINLINE HAS BEEN SHOWN FOR CLARITY ONLY. MAINLINE SHALL BE LOCATED WITHIN THE ROADWAY MEADIAN.
- PIPE SLEEVES SHALL ALLOW FOR IRRIGATION PIPING AND THEIR RELATED COUPLINGS TO EASILY SLIDE THROUGH SLEEVING PIPE. EXTEND SLEEVES 18 INCHES BEYOND EDGES OF PAVING. REFER TO SLEEVE SIZE SCHEDULE.



ADDENDUM 2

R E V I S I O N S				
	DESCRIPTION	DATE	BY	DESCRIPTION

**Kimley»Horn**

MATTHEW T. FRANKO, P.L.A. No. 6667292  
445 24TH STREET, SUITE 200  
VERO BEACH, FL 32960  
(772) 794-4100  
REGISTRY No: 696

**INDIAN RIVER COUNTY**  
**BOARD OF COUNTY COMMISSIONERS**  
**66th AVENUE FROM 69th STREET**  
**TO SR-510/85th STREET**

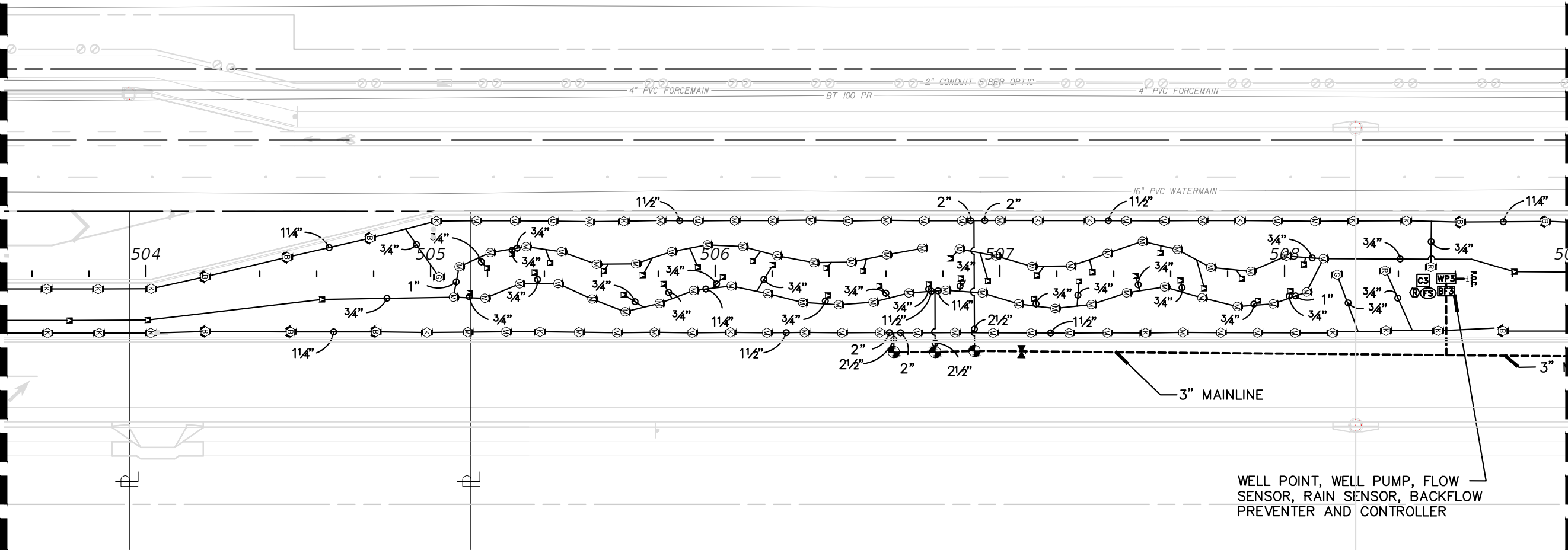
**66th AVENUE**  
**IRRIGATION PLAN**

SHEET  
NO.

LD-38

MATCHLINE STA. 503+50.00

MATCHLINE STA. 509+00.00



WELL POINT, WELL PUMP, FLOW  
SENSOR, RAIN SENSOR, BACKFLOW  
PREVENTER AND CONTROLLER

NOTES:

- CONTRACTOR TO PROVIDE NEW WELL UP TO 100' DEEP, WITH DIAMETER AS SPECIFIED. PROVIDE A LINE ITEM 'PER FOOT' COST FOR EACH ADDITIONAL FOOT OF DEPTH. IF NEEDED. CONTRACTOR SHALL NOT DRILL THE WELL DEEPER THAN 100' WITHOUT RECEIVING PRIOR WRITTEN AUTHORIZATION. IF PRIOR AUTHORIZATION IS NOT OBTAINED, IN WRITING, NO ADDITIONAL MONIES WILL BE PAID.
- AFTER THE WELL IS DRILLED, A STEP TEST MUST BE PERFORMED ON THE WELL TO VERIFY THE WELL CAN PRODUCE THE REQUIRED VOLUME OF WATER ON A CONTINUAL BASIS. THE STEP TEST MUST LAST 8 HOURS WITH WATER LEVEL MEASURED EACH HALF HOUR. PEAK DEMAND IS THE GPM IDENTIFIED IN THE POC NOTE ON THE NOTES SHEET:  
HOURS 1-2 - PUMP AT 50% OF PEAK DEMAND  
HOURS 3-4 - PUMP AT 75% OF PEAK DEMAND  
HOURS 5-6 - PUMP AT 100% PEAK DEMAND  
HOURS 7-8 - PUMP AT 125% OF PEAK DEMAND  
THE RESULTS OF THIS TEST MUST BE APPROVED BY THE OWNER/OWNERS REPRESENTATIVE PRIOR TO THE INSTALLATION OF THE PUMP OR IRRIGATION SYSTEM COMPONENTS. IF THE CONTRACTOR DOES NOT FOLLOW THESE REQUIREMENTS AND THE WELL PROVES TO BE INSUFFICIENT, THE CONTRACTOR BEARS 100% OF THE RESPONSIBILITY AND COSTS TO CORRECT/MODIFY THE SYSTEM TO ACCOMMODATE THE EVENTUAL WATER SOURCE.
- AFTER DRILLING THE WELL, CHECK THE WATER QUALITY TO ENSURE IT IS SUITABLE FOR LANDSCAPE PLANTINGS. USE THE SERVICES OF A REPUTABLE, LICENSED LABORATORY ONLY. WATER QUALITY TESTING MUST INCLUDE pH, CONDUCTIVITY, SODIUM, POTASSIUM, CALCIUM, MAGNESIUM, CARBONATE, BICARBONATE, CHLORIDE, PHOSPHOROUS, NITRATE NO3, SULFATE SO4, BORON, IRON, TOTAL DISSOLVED SOLIDS, SODIUM ABSORPTION RATIO, AND HARDNESS. IF THE WATER IS DETERMINED SUITABLE CONTINUE IRRIGATION INSTALLATION. IF THE WATER QUALITY IS UNSUITABLE, DO NOT PROCEED WITHOUT WRITTEN DIRECTION FROM THE OWNER/OWNER'S REPRESENTATIVE.
- IF A HIGH IRON CONTENT (OR OTHER STAIN PRODUCING COMPOUND) IS DETECTED, ADVISE THE OWNER/OWNER'S REPRESENTATIVE. DO NOT PROCEED WITHOUT WRITTEN PERMISSION. IF A CHEMICAL INJECTION SYSTEM IS REQUIRED BY THE OWNER, IT MUST BE DIRECTED BY THE OWNER AND INSTALLED BY THE PUMP SYSTEM MANUFACTURER.
- THE WELL CASING SHALL BE GALVANIZED STEEL PIPE (SIZED PER PLAN).
- THE PUMP DROP PIPE SHALL BE 2" CERTA LOCK PVC PIPE.
- PRIOR TO INSTALLING ANY IRRIGATION SYSTEM COMPONENTS, THE CONTRACTOR SHALL OBTAIN A WATER SAMPLE FROM THE PROPOSED WATER SUPPLY. CONDUCT A PARTICLE SIZE AND COUNT ANALYSIS ON THE SAMPLE USING THE SERVICES OF A REPUTABLE LAB CERTIFIED IN SUCH ANALYSES. SUBMIT THE TEST RESULTS TO THE OWNER/OWNER'S REPRESENTATIVE FOR REVIEW AND APPROVAL. DO NOT PROCEED FURTHER WITH SYSTEM INSTALLATION UNTIL GIVEN WRITTEN APPROVAL TO DO SO. IF CONTRACTOR DOES NOT COMPLY WITH THIS REQUIREMENT, ANY COSTS TO MAKE THE IRRIGATION SYSTEM OPERATE AS REQUIRED (WHICH WOULD NOT HAVE BEEN INCURRED HAD THESE REQUIREMENTS BEEN COMPLIED WITH), WILL BE THE RESPONSIBILITY OF THE CONTRACTOR.
- THE FUTURE INTENDED IRRIGATION WATER SOURCE IS RECLAIMED WATER IF IT BECOMES AVAILABLE. ALL IRRIGATION MATERIAL SHALL BE COLOR CODED 'PANTONE' PURPLE' AS REQUIRED BY FLORIDA DEPARTMENT OF ENVIRONMENTAL PROTECTION.

CONTROL NOTES:

- CONTRACTOR TO PROGRAM THE CONTROLLER(S) TO RUN BUBBLER AND SHRUB ZONES TWO AT A TIME (BUBBLER WITH BUBBLER AND SHRUB WITH SHRUB) TO MAINTAIN FLOW ABOVE THE PUMP'S MINIMUM 5 GPM FLOW AND BELOW 65 GPM.

IRRIGATION LEGEND

▼	RB1804-SAM-1404 FLOOD BUBBLES W/NP COVER	0.25 GPM @ 30 PSI
⊙	RB1806-SAM-PRS-30 W/HUNTER MPRSS530	0.44 GPM @ 40 PSI
Ⓜ	RB1806-SAM-PRS-30 W/ HUNTER MP1000 adj. arc 90°-210°	0.19-0.43 GPM @ 40 PSI
Ⓢ	RB1806-SAM-PRS-30 W/HUNTER MP1000360	0.37 GPM @ 40 PSI
Ⓚ	RB1806-SAM-PRS-30 W/HUNTER MP2000 adj. arc 90°-210°	0.40-1.10 GPM @ 40 PSI
Ⓡ	RB1806-SAM-PRS-30 W/HUNTER MP2000360	1.47 GPM @ 40 PSI
Ⓟ	RB1806-SAM-PRS-30 W/HUNTER MP3000 adj. arc 90°-210°	0.86-2.12 GPM @ 40 PSI
⊙	RB PEB SERIES RCV with flow control	⚡ NIBCO P-619-RW MAINLINE ISO VALVE
WP	SULLIVAN ELECTRIC 5HP	ACC HUNTER ACC 18STATION CONTROLLER
P.O.C.	WELL POINT - 4" SHALLOW WELL - 100FT MAX DEPTH	Ⓡ HUNTER RFC POLE MOUNTED
---	CLASS 200 PANTONE PURPLE PVC LATERAL LINE W/SCH 40 SOLVENT WELD PVC FITTING (SIZE PER PLAN MIN. PIPE SIZE 3/4")	Ⓢ DATA INDUSTRIES MODEL #220 BR.
---	CLASS 200 PANTONE PURPLE PVC GASKETED 'O' RING MAINLINE W/LEEMKO DUCTILE IRON FITTING WITH MECHANICAL JOIN RESTRAINTS (SIZE PER PLAN)	Ⓟ FEBCO RPZ BACKFLOW PREVENTER
---	IRRIGATION PIPE SLEEVE - CLASS 200 W/SCH 40 SOLVENT-WELD PVC FITTING	
---	SCH40 GREY PVC CONDUIT W/SCH0 SOLVENT-WELD PVC FITTING	

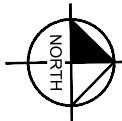
SLEEVE SIZE SCHEDULE

PIPE SIZE (CLASS 200)	SLEEVE SIZE (SCHEDULE 40)
3/4"	1-1/2"
1"	2"
1-1/4"	2-1/2"
1-1/2"	3"
2"	4"
2-1/2"	6"
3, 4"	6"

NOTES

- MAINLINE HAS BEEN SHOWN FOR CLARITY ONLY. MAINLINE SHALL BE LOCATED WITHIN THE ROADWAY MEADIAN.
- PIPE SLEEVES SHALL ALLOW FOR IRRIGATION PIPING AND THEIR RELATED COUPLINGS TO EASILY SLIDE THROUGH SLEEVING PIPE. EXTEND SLEEVES 18 INCHES BEYOND EDGES OF PAVING. REFER TO SLEEVE SIZE SCHEDULE.

ADDENDUM 2



R E V I S I O N S				
	DESCRIPTION	DATE	BY	DESCRIPTION

**Kimley»Horn**

MATTHEW T. FRANKO, P.L.A. No. 6667292  
445 24TH STREET, SUITE 200  
VERO BEACH, FL 32960  
(772) 794-4100  
REGISTRY No. 696

**INDIAN RIVER COUNTY**  
**BOARD OF COUNTY COMMISSIONERS**  
**66th AVENUE FROM 69th STREET**  
**TO SR-510/85th STREET**

**66th AVENUE**  
**IRRIGATION PLAN**

SHEET  
NO.  
  
LD-39



