

BID FORM 01 OF 10

LOCATION: HOPE AVENUE FROM SW 183RD Street to WAYNE AVENUE - APPROX 1,467 SQ YDS

BID ITEM NO.	DESCRIPTION	UNIT	QUANTITY	UNIT PRICE	TOTAL COST
MSR-1	5' WIDE CONCRETE SIDEWALKS	LF			
MSR-2	ASPHALT CONCRETE (TYPE 1" THICK)	TON			
MSR-3	MILLING EXISTING PAVEMENT (1") PAYMENT WITH GREATER CUTS WILL BE PAID PROPORTIONALLY	SQ YDS			
MSR-4	ADJUST MANHOLE (THIS ITEM IS CONTINGENT UPON FIELD CONDITIONS AND MAY BE INCREASED, DECREASED OR ELIMINATED BY ENGINEER)	EACH			
MSR-5	ADJUST EXISTING VALVE BOXES (THIS ITEM IS CONTINGENT UPON FIELD CONDITIONS AND MAY BE INCREASED, DECREASED OR ELIMINATED BY THE ENGINEER)	EACH			
MSR-6	REFLECTIVE PAVEMENT MARKERS (CLASS B: MONO OR BI-DIRECTIONAL, ALL COLORS)	EACH			
MSR-9	TEMPORARY PAVEMENT MARKING (WHITE/YELLOW:SOLID; 6")	LINEAR FOOT			
MSR-10	YELLOW, SOLID; 6"	LINEAR FOOT			
MSR-13	TEMPORARY PAVEMENT MARKING (WHITE:SOLID;12")	LINEAR FOOT			
MSR-14	THERMOPLASTIC (WHITE:SOLID; 12")	LINEAR FOOT			
MSR-17	TEMPORARY PAVEMENT MARKING (WHITE:SOLID; 24")	LINEAR FOOT			
MSR-18	THERMOPLASTIC (WHITE:SOLID; 24")	LINEAR FOOT			
MOT	MAINTENANCE OF TRAFFIC	LUMP SUM			

TOTAL BID FOR: HOPE AVENUE FROM SW 183RD ST TO WAYNE AVENUE

\$\_\_\_\_\_



HOPE AVE. 183 st to WAYNE

Legend



500 ft



BID FORM 02 OF 10

LOCATION: EAST HIBISCUS FROM S DIXIE HIGHWAY TO FRANJO ROAD - APPROX 2,000 SQ YDS

BID ITEM NO.	DESCRIPTION	UNIT	QUANTITY	UNIT PRICE	TOTAL COST
MSR-1	5' WIDE CONCRETE SIDEWALKS	LF			
MSR-2	ASPHALT CONCRETE (TYPE 1" THICK)	TON			
MSR-3	MILLING EXISTING PAVEMENT (1") PAYMENT WITH GREATER CUTS WILL BE PAID PROPORTIONALLY	SQ YDS			
MSR-4	ADJUST MANHOLE (THIS ITEM IS CONTINGENT UPON FIELD CONDITIONS AND MAY BE INCREASED, DECREASED OR ELIMINATED BY ENGINEER)	EACH			
MSR-5	ADJUST EXISTING VALVE BOXES (THIS ITEM IS CONTINGENT UPON FIELD CONDITIONS AND MAY BE INCREASED, DECREASED OR ELIMINATED BY THE ENGINEER)	EACH			
MSR-6	REFLECTIVE PAVEMENT MARKERS (CLASS B: MONO OR BI-DIRECTIONAL, ALL COLORS)	EACH			
MSR-9	TEMPORARY PAVEMENT MARKING (WHITE/YELLOW:SOLID; 6")	LINEAR FOOT			
MSR-10	YELLOW, SOLID; 6"	LINEAR FOOT			
MSR-13	TEMPORARY PAVEMENT MARKING (WHITE:SOLID;12")	LINEAR FOOT			
MSR-14	THERMOPLASTIC (WHITE:SOLID; 12")	LINEAR FOOT			
MSR-17	TEMPORARY PAVEMENT MARKING (WHITE:SOLID; 24")	LINEAR FOOT			
MSR-18	THERMOPLASTIC (WHITE:SOLID; 24")	LINEAR FOOT			
MOT	MAINTENANCE OF TRAFFIC	LUMP SUM			

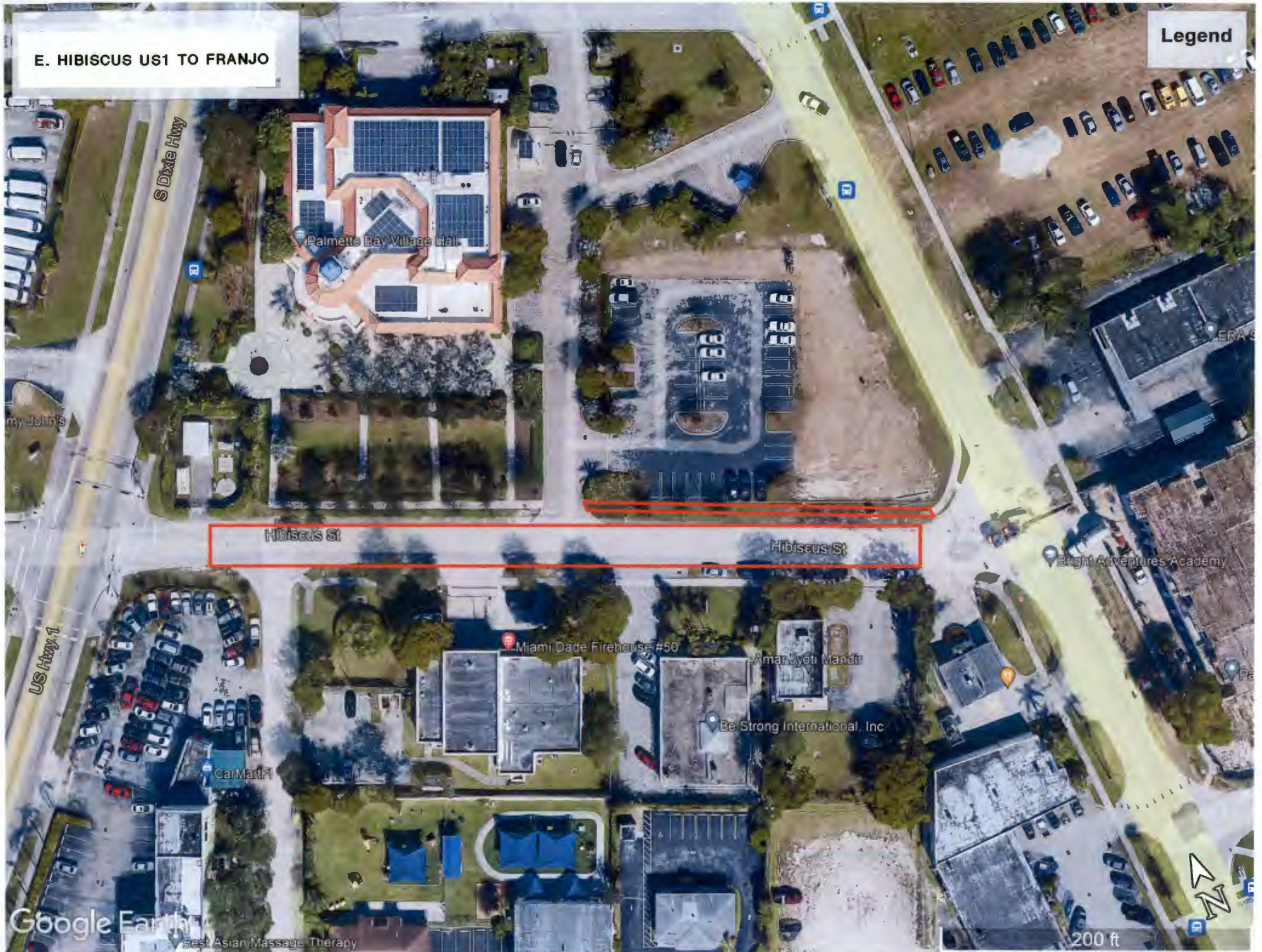
TOTAL BID FOR: EAST HIBISCUS FROM S DIXIE HIGHWAY TO FRANJO ROAD

\$ \_\_\_\_\_



E. HIBISCUS US1 TO FRANJO

Legend



Google Earth

200 ft



BID FORM 03 OF 10

LOCATION: SW 163RD Street From SW 77TH Avenue to SW 74TH Avenue) - APPROX 3,875 SQ YDS

BID ITEM NO.	DESCRIPTION	UNIT	QUANTITY	UNIT PRICE	TOTAL COST
MSR-1	5' WIDE CONCRETE SIDEWALKS	LF			
MSR-2	ASPHALT CONCRETE (TYPE 1" THICK)	TON			
MSR-3	MILLING EXISTING PAVEMENT (1") PAYMENT WITH GREATER CUTS WILL BE PAID PROPORTIONALLY	SQ YDS			
MSR-4	ADJUST MANHOLE (THIS ITEM IS CONTINGENT UPON FIELD CONDITIONS AND MAY BE INCREASED, DECREASED OR ELIMINATED BY ENGINEER)	EACH			
MSR-5	ADJUST EXISTING VALVE BOXES (THIS ITEM IS CONTINGENT UPON FIELD CONDITIONS AND MAY BE INCREASED, DECREASED OR ELIMINATED BY THE ENGINEER	EACH			
MSR-6	REFLECTIVE PAVEMENT MARKERS (CLASS B: MONO OR BI-DIRECTIONAL, ALL COLORS)	EACH			
MSR-9	TEMPORARY PAVEMENT MARKING (WHITE/YELLOW:SOLID; 6")	LINEAR FOOT			
MSR-10	YELLOW, SOLID; 6"	LINEAR FOOT			
MSR-13	TEMPORARY PAVEMENT MARKING (WHITE:SOLID;12")	LINEAR FOOT			
MSR-14	THERMOPLASTIC (WHITE:SOLID; 12")	LINEAR FOOT			
MSR-17	TEMPORARY PAVEMENT MARKING (WHITE:SOLID; 24")	LINEAR FOOT			
MSR-18	THERMOPLASTIC (WHITE:SOLID; 24")	LINEAR FOOT			
MOT	MAINTENANCE OF TRAFFIC	LUMP SUM			

TOTAL BID FOR: SW 163RD Street From SW 77TH Avenue to SW 74TH Avenue

\$ \_\_\_\_\_



SW 163 ST. 77TH TO 74 AVE.

Legend

SW 162nd St

SW 162nd St

SW 162nd St

SW 162nd St

SW 163rd St

SW 163rd St

SW 163rd St

SW 163rd St

SW 163rd St

SW 164th St

SW 164th St

SW 164th St

SW 164th St

elect Sports Management Agency

Google Earth

Data SIO, NOAA, U.S. Navy, NGA, GEBCO

400 ft





BID FORM 04 OF 10

LOCATION: SW 74th Avenue From SW 162nd Street to North Cul de Sac) - APPROX 1,300 SQ YDS

BID ITEM NO.	DESCRIPTION	UNIT	QUANTITY	UNIT PRICE	TOTAL COST
MSR-1	5' WIDE CONCRETE SIDEWALKS	LF			
MSR-2	ASPHALT CONCRETE (TYPE 1" THICK)	TON			
MSR-3	MILLING EXISTING PAVEMENT (1") PAYMENT WITH GREATER CUTS WILL BE PAID PROPORTIONALLY	SQ YDS			
MSR-4	ADJUST MANHOLE (THIS ITEM IS CONTINGENT UPON FIELD CONDITIONS AND MAY BE INCREASED, DECREASED OR ELIMINATED BY ENGINEER)	EACH			
MSR-5	ADJUST EXISTING VALVE BOXES (THIS ITEM IS CONTINGENT UPON FIELD CONDITIONS AND MAY BE INCREASED, DECREASED OR ELIMINATED BY THE ENGINEER)	EACH			
MSR-6	REFLECTIVE PAVEMENT MARKERS (CLASS B: MONO OR BI-DIRECTIONAL, ALL COLORS)	EACH			
MSR-9	TEMPORARY PAVEMENT MARKING (WHITE/YELLOW:SOLID; 6")	LINEAR FOOT			
MSR-10	YELLOW, SOLID; 6"	LINEAR FOOT			
MSR-13	TEMPORARY PAVEMENT MARKING (WHITE:SOLID;12")	LINEAR FOOT			
MSR-14	THERMOPLASTIC (WHITE:SOLID; 12")	LINEAR FOOT			
MSR-17	TEMPORARY PAVEMENT MARKING (WHITE:SOLID; 24")	LINEAR FOOT			
MSR-18	THERMOPLASTIC (WHITE:SOLID; 24")	LINEAR FOOT			
MOT	MAINTENANCE OF TRAFFIC	LUMP SUM			

TOTAL BID FOR: SW 74th Avenue From SW 162nd Street to North Cul-de-Sac

\$ \_\_\_\_\_



SW 74TH AVE. 162 ST TO CUL DE SAC

Legend



Google Earth

© 2021 Google



300 ft



BID FORM 05 OF 10

LOCATION: SW 137th Street From SW 73rd Avenue to SW 72ND Avenue) - APPROX 1,700 SQ YDS

BID ITEM NO.	DESCRIPTION	UNIT	QUANTITY	UNIT PRICE	TOTAL COST
MSR-1	5' WIDE CONCRETE SIDEWALKS	LF			
MSR-2	ASPHALT CONCRETE (TYPE 1" THICK)	TON			
MSR-3	MILLING EXISTING PAVEMENT (1") PAYMENT WITH GREATER CUTS WILL BE PAID PROPORTIONALLY	SQ YDS			
MSR-4	ADJUST MANHOLE (THIS ITEM IS CONTINGENT UPON FIELD CONDITIONS AND MAY BE INCREASED, DECREASED OR ELIMINATED BY ENGINEER)	EACH			
MSR-5	ADJUST EXISTING VALVE BOXES (THIS ITEM IS CONTINGENT UPON FIELD CONDITIONS AND MAY BE INCREASED, DECREASED OR ELIMINATED BY THE ENGINEER	EACH			
MSR-6	REFLECTIVE PAVEMENT MARKERS (CLASS B: MONO OR BI-DIRECTIONAL, ALL COLORS)	EACH			
MSR-9	TEMPORARY PAVEMENT MARKING (WHITE/YELLOW:SOLID; 6")	LINEAR FOOT			
MSR-10	YELLOW, SOLID; 6"	LINEAR FOOT			
MSR-13	TEMPORARY PAVEMENT MARKING (WHITE:SOLID;12")	LINEAR FOOT			
MSR-14	THERMOPLASTIC (WHITE:SOLID; 12")	LINEAR FOOT			
MSR-17	TEMPORARY PAVEMENT MARKING (WHITE:SOLID; 24")	LINEAR FOOT			
MSR-18	THERMOPLASTIC (WHITE:SOLID; 24")	LINEAR FOOT			
MOT	MAINTENANCE OF TRAFFIC	LUMP SUM			

TOTAL BID FOR: SW 137th Street From SW 73rd Avenue to SW 72ND Avenue

\$ \_\_\_\_\_



SW 137ST FROM 73-72ND AVE.

Legend

All Dade Appliance

SW 72nd Ave

SW 72nd Ave

SW 72nd Ave

SW 72nd Ave

SW 137th St

SW 137th St

SW 137th St

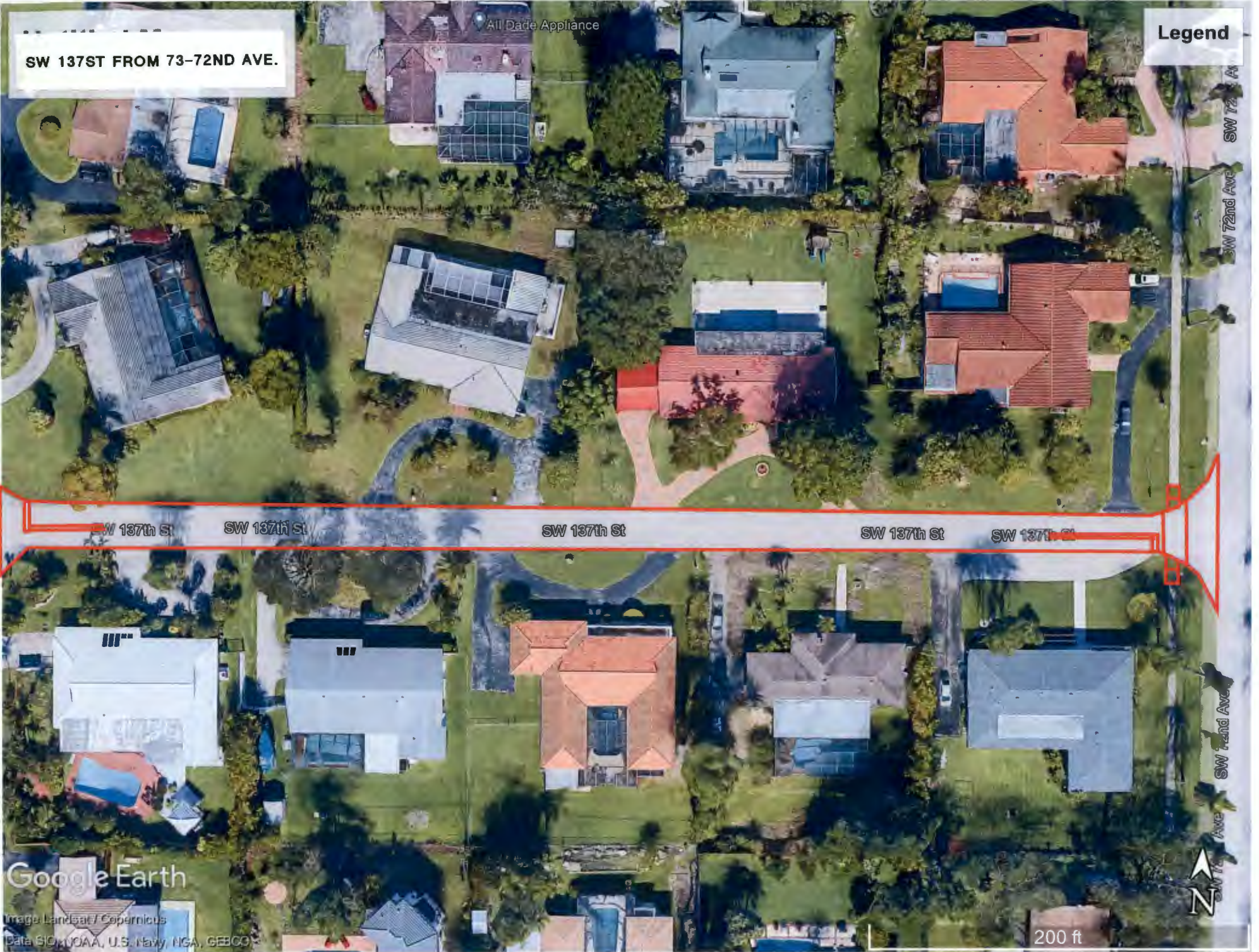
SW 137th St

SW 137th St

Google Earth

Image Landsat / Copernicus  
Data SIO, NOAA, U.S. Navy, NGA, GEBCO

200 ft





BID FORM 06 OF 10

LOCATION: SW 169th Street (From S Dixie Hwy to SW 92ND Court) - APPROX 4,400 SQ YDS

BID ITEM NO.	DESCRIPTION	UNIT	QUANTITY	UNIT PRICE	TOTAL COST
MSR-1	5' WIDE CONCRETE SIDEWALKS	LF			
MSR-2	ASPHALT CONCRETE (TYPE 1" THICK)	TON			
MSR-3	MILLING EXISTING PAVEMENT (1") PAYMENT WITH GREATER CUTS WILL BE PAID PROPORTIONALLY	SQ YDS			
MSR-4	ADJUST MANHOLE (THIS ITEM IS CONTINGENT UPON FIELD CONDITIONS AND MAY BE INCREASED, DECREASED OR ELIMINATED BY ENGINEER)	EACH			
MSR-5	ADJUST EXISTING VALVE BOXES (THIS ITEM IS CONTINGENT UPON FIELD CONDITIONS AND MAY BE INCREASED, DECREASED OR ELIMINATED BY THE ENGINEER	EACH			
MSR-6	REFLECTIVE PAVEMENT MARKERS (CLASS B: MONO OR BI-DIRECTIONAL, ALL COLORS)	EACH			
MSR-9	TEMPORARY PAVEMENT MARKING (WHITE/YELLOW:SOLID; 6")	LINEAR FOOT			
MSR-10	YELLOW, SOLID; 6"	LINEAR FOOT			
MSR-13	TEMPORARY PAVEMENT MARKING (WHITE:SOLID;12")	LINEAR FOOT			
MSR-14	THERMOPLASTIC (WHITE:SOLID; 12")	LINEAR FOOT			
MSR-17	TEMPORARY PAVEMENT MARKING (WHITE:SOLID; 24")	LINEAR FOOT			
MSR-18	THERMOPLASTIC (WHITE:SOLID; 24")	LINEAR FOOT			
MOT	MAINTENANCE OF TRAFFIC	LUMP SUM			

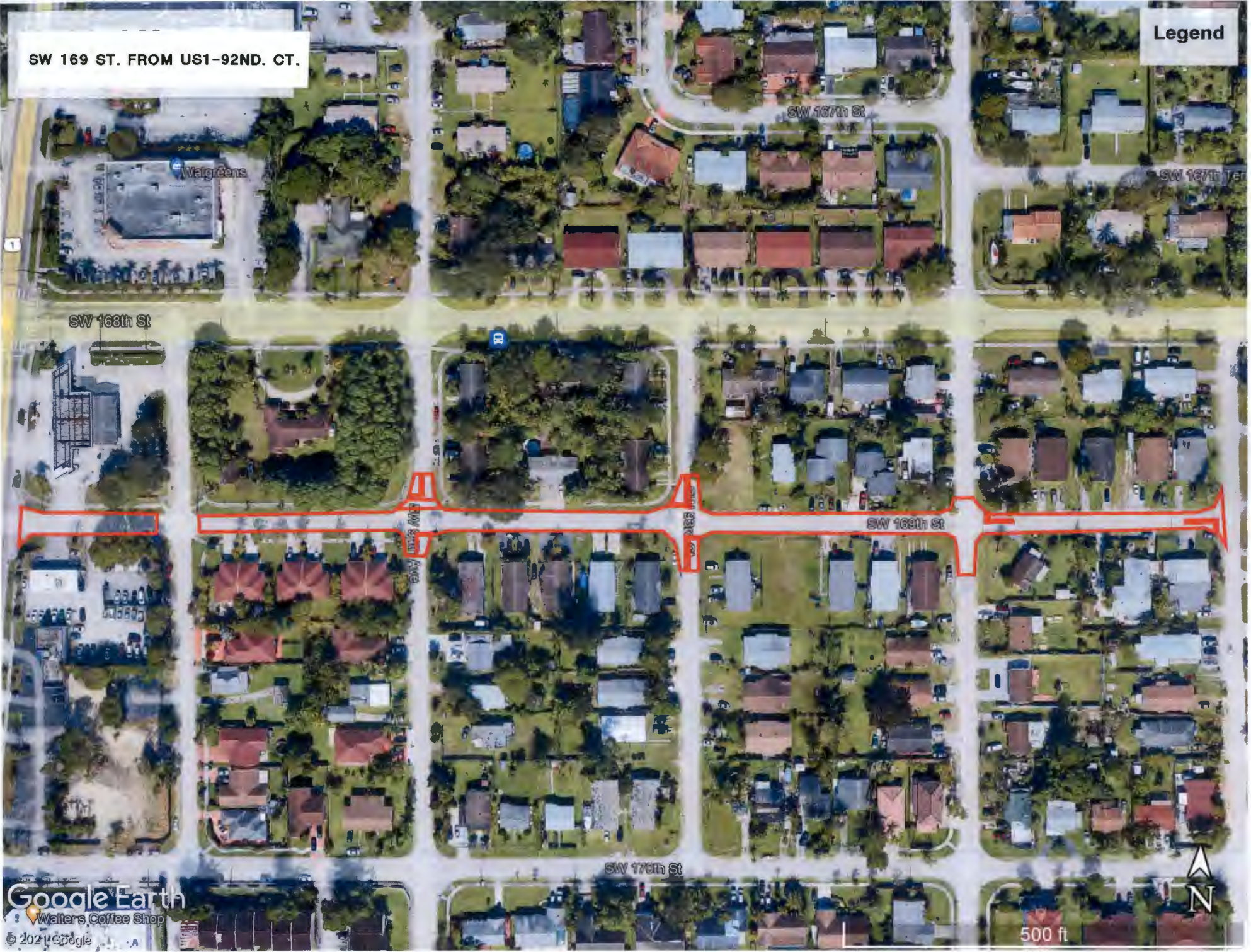
TOTAL BID FOR: SW 169th Street From S Dixie Hwy to SW 92ND Court

\$ \_\_\_\_\_



SW 169 ST. FROM US1-92ND. CT.

Legend



500 ft





BID FORM 07 OF 10

LOCATION: SW 94th Court (From SW 170TH Street to SW 168TH Street) - APPROX 1,890 SQ YDS

BID ITEM NO.	DESCRIPTION	UNIT	QUANTITY	UNIT PRICE	TOTAL COST
MSR-1	5' WIDE CONCRETE SIDEWALKS	LF			
MSR-2	ASPHALT CONCRETE (TYPE 1" THICK)	TON			
MSR-3	MILLING EXISTING PAVEMENT (1") PAYMENT WITH GREATER CUTS WILL BE PAID PROPORTIONALLY	SQ YDS			
MSR-4	ADJUST MANHOLE (THIS ITEM IS CONTINGENT UPON FIELD CONDITIONS AND MAY BE INCREASED, DECREASED OR ELIMINATED BY ENGINEER)	EACH			
MSR-5	ADJUST EXISTING VALVE BOXES (THIS ITEM IS CONTINGENT UPON FIELD CONDITIONS AND MAY BE INCREASED, DECREASED OR ELIMINATED BY THE ENGINEER)	EACH			
MSR-6	REFLECTIVE PAVEMENT MARKERS (CLASS B: MONO OR BI-DIRECTIONAL, ALL COLORS)	EACH			
MSR-9	TEMPORARY PAVEMENT MARKING (WHITE/YELLOW:SOLID; 6")	LINEAR FOOT			
MSR-10	YELLOW, SOLID; 6"	LINEAR FOOT			
MSR-13	TEMPORARY PAVEMENT MARKING (WHITE:SOLID;12")	LINEAR FOOT			
MSR-14	THERMOPLASTIC (WHITE:SOLID; 12")	LINEAR FOOT			
MSR-17	TEMPORARY PAVEMENT MARKING (WHITE:SOLID; 24")	LINEAR FOOT			
MSR-18	THERMOPLASTIC (WHITE:SOLID; 24")	LINEAR FOOT			
MOT	MAINTENANCE OF TRAFFIC	LUMP SUM			

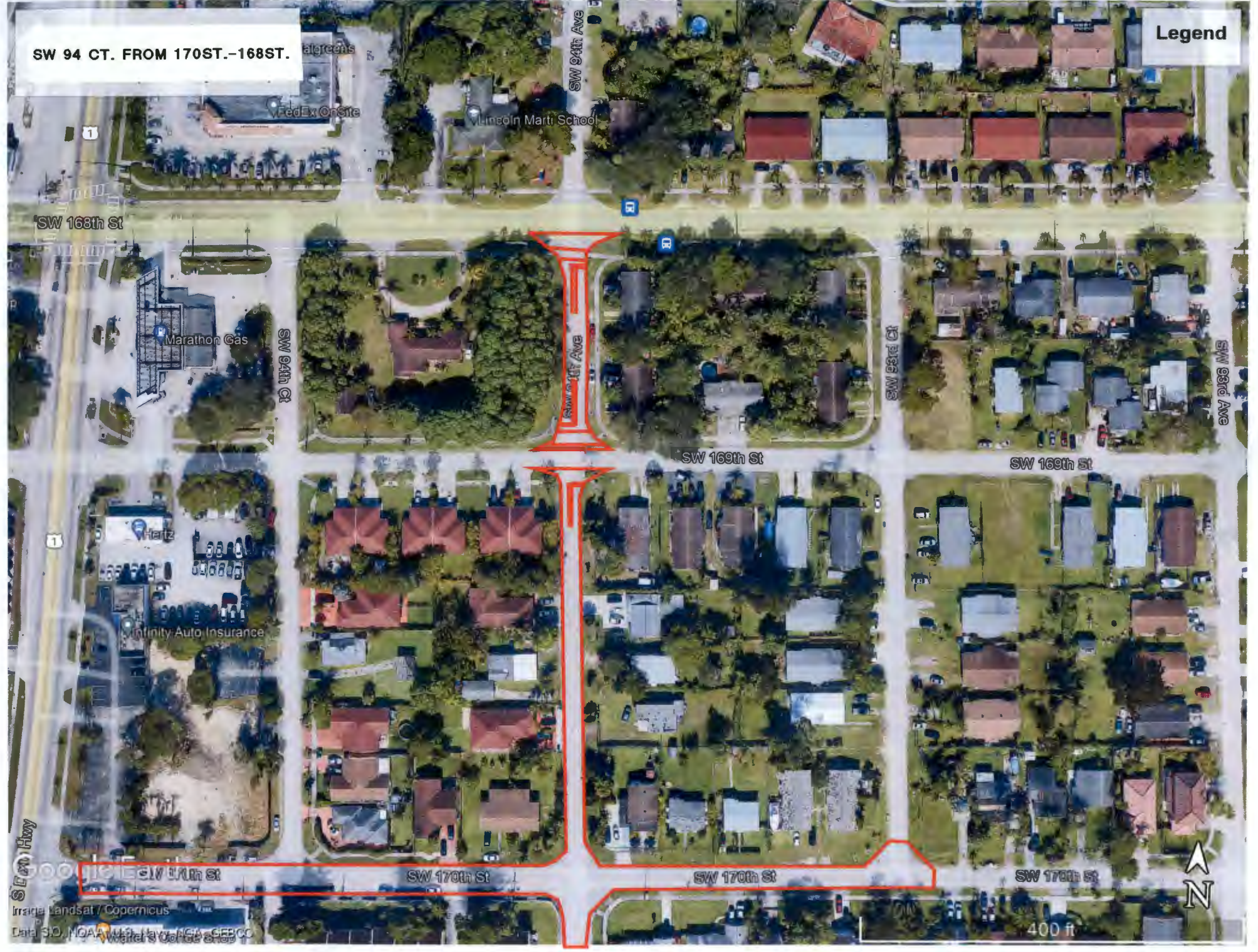
TOTAL BID FOR: SW 94th Court From SW 170TH Street to SW 168TH Street

\$\_\_\_\_\_



SW 94 CT. FROM 170ST.-168ST.

Legend



1

SW 168th St

SW 94th Ave

SW 94th Ct

SW 94th Ave

SW 93rd Ct

SW 93rd Ave

SW 169th St

SW 169th St

1

Infinity Auto Insurance

Hertz

SW Hwy

SW 171th St

SW 170th St

SW 170th St

SW 170th St

Google Earth Pro  
Image Landsat / Copernicus  
Data SIO, NOAA, U.S. Navy, NGA, GEBCO  
Map data © OpenStreetMap contributors, Imagery © Mapbox



400 ft



BID FORM 08 OF 10

LOCATION: SW 170th Lane (From SW 94th Avenue to Cul-de-Sac) - APPROX 1,603 SQ YDS

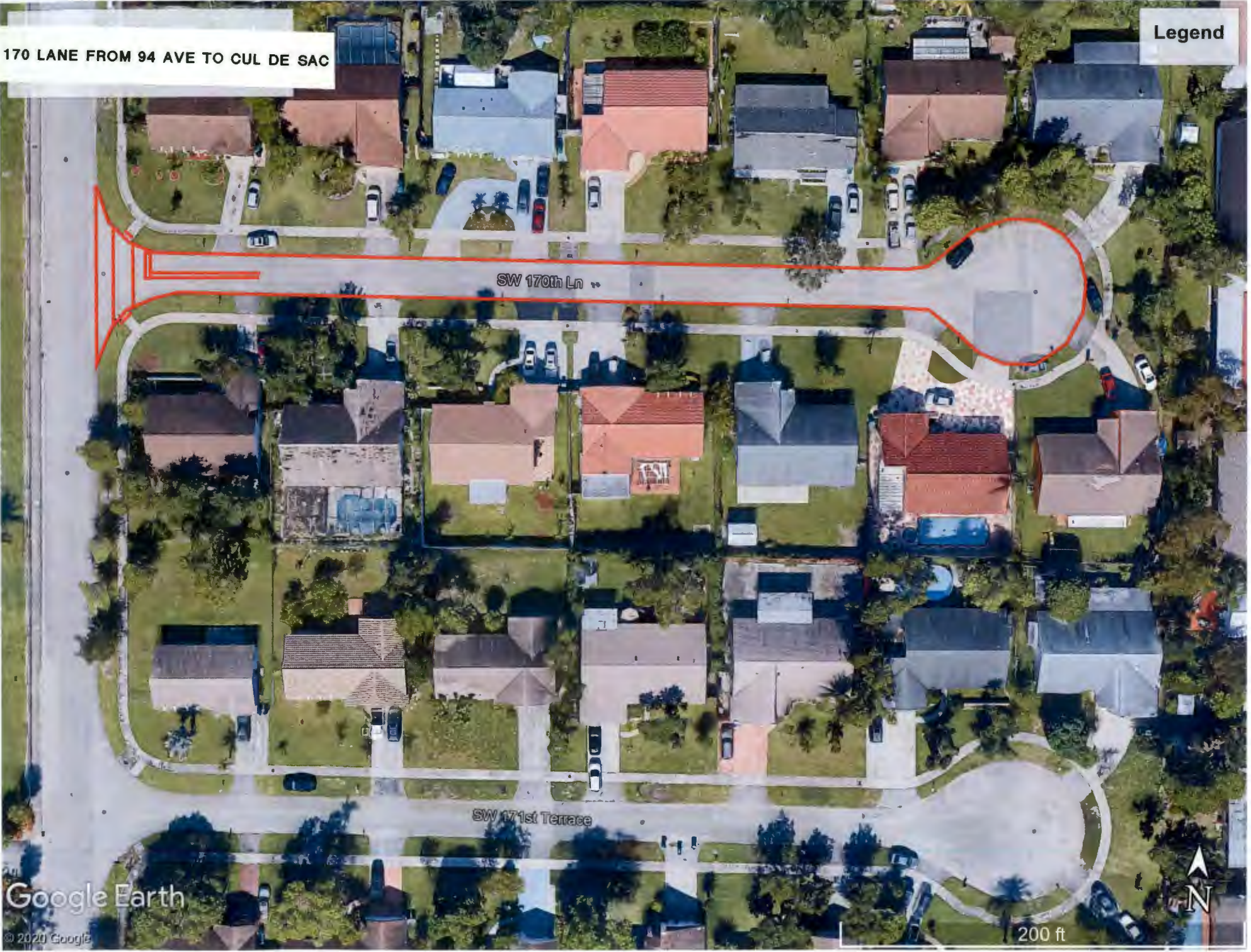
BID ITEM NO.	DESCRIPTION	UNIT	QUANTITY	UNIT PRICE	TOTAL COST
MSR-1	5' WIDE CONCRETE SIDEWALKS	LF			
MSR-2	ASPHALT CONCRETE (TYPE 1" THICK)	TON			
MSR-3	MILLING EXISTING PAVEMENT (1") PAYMENT WITH GREATER CUTS WILL BE PAID PROPORTIONALLY	SQ YDS			
MSR-4	ADJUST MANHOLE (THIS ITEM IS CONTINGENT UPON FIELD CONDITIONS AND MAY BE INCREASED, DECREASED OR ELIMINATED BY ENGINEER)	EACH			
MSR-5	ADJUST EXISTING VALVE BOXES (THIS ITEM IS CONTINGENT UPON FIELD CONDITIONS AND MAY BE INCREASED, DECREASED OR ELIMINATED BY THE ENGINEER)	EACH			
MSR-6	REFLECTIVE PAVEMENT MARKERS (CLASS B: MONO OR BI-DIRECTIONAL, ALL COLORS)	EACH			
MSR-9	TEMPORARY PAVEMENT MARKING (WHITE/YELLOW:SOLID; 6")	LINEAR FOOT			
MSR-10	YELLOW, SOLID; 6"	LINEAR FOOT			
MSR-13	TEMPORARY PAVEMENT MARKING (WHITE:SOLID;12")	LINEAR FOOT			
MSR-14	THERMOPLASTIC (WHITE:SOLID; 12")	LINEAR FOOT			
MSR-17	TEMPORARY PAVEMENT MARKING (WHITE:SOLID; 24")	LINEAR FOOT			
MSR-18	THERMOPLASTIC (WHITE:SOLID; 24")	LINEAR FOOT			
MOT	MAINTENANCE OF TRAFFIC	LUMP SUM			

TOTAL BID FOR: SW 170th Lane From SW 94TH Avenue to Cul de Sac

\$\_\_\_\_\_

Legend

SW 170 LANE FROM 94 AVE TO CUL DE SAC



Google Earth

© 2020 Google

200 ft





BID FORM 09 OF 10

LOCATION: SW 165th Street (From SW 93rd Avenue to SW 92nd Avenue) - APPROX 1,922 SQ YDS

BID ITEM NO.	DESCRIPTION	UNIT	QUANTITY	UNIT PRICE	TOTAL COST
MSR-1	5' WIDE CONCRETE SIDEWALKS	LF			
MSR-2	ASPHALT CONCRETE (TYPE 1" THICK)	TON			
MSR-3	MILLING EXISTING PAVEMENT (1") PAYMENT WITH GREATER CUTS WILL BE PAID PROPORTIONALLY	SQ YDS			
MSR-4	ADJUST MANHOLE (THIS ITEM IS CONTINGENT UPON FIELD CONDITIONS AND MAY BE INCREASED, DECREASED OR ELIMINATED BY ENGINEER)	EACH			
MSR-5	ADJUST EXISTING VALVE BOXES (THIS ITEM IS CONTINGENT UPON FIELD CONDITIONS AND MAY BE INCREASED, DECREASED OR ELIMINATED BY THE ENGINEER)	EACH			
MSR-6	REFLECTIVE PAVEMENT MARKERS (CLASS B: MONO OR BI-DIRECTIONAL, ALL COLORS)	EACH			
MSR-9	TEMPORARY PAVEMENT MARKING (WHITE/YELLOW:SOLID; 6")	LINEAR FOOT			
MSR-10	YELLOW, SOLID; 6"	LINEAR FOOT			
MSR-13	TEMPORARY PAVEMENT MARKING (WHITE:SOLID;12")	LINEAR FOOT			
MSR-14	THERMOPLASTIC (WHITE:SOLID; 12")	LINEAR FOOT			
MSR-17	TEMPORARY PAVEMENT MARKING (WHITE:SOLID; 24")	LINEAR FOOT			
MSR-18	THERMOPLASTIC (WHITE:SOLID; 24")	LINEAR FOOT			
MOT	MAINTENANCE OF TRAFFIC	LUMP SUM			

TOTAL BID FOR: SW 165th Street From SW 93rd Avenue to SW 92nd Avenue

\$ \_\_\_\_\_



SW 165ST FROM 93RD AVE-92ND

Legend

SW 164th St

SW 92nd Ave

SW 165th St

SW 93rd Ave

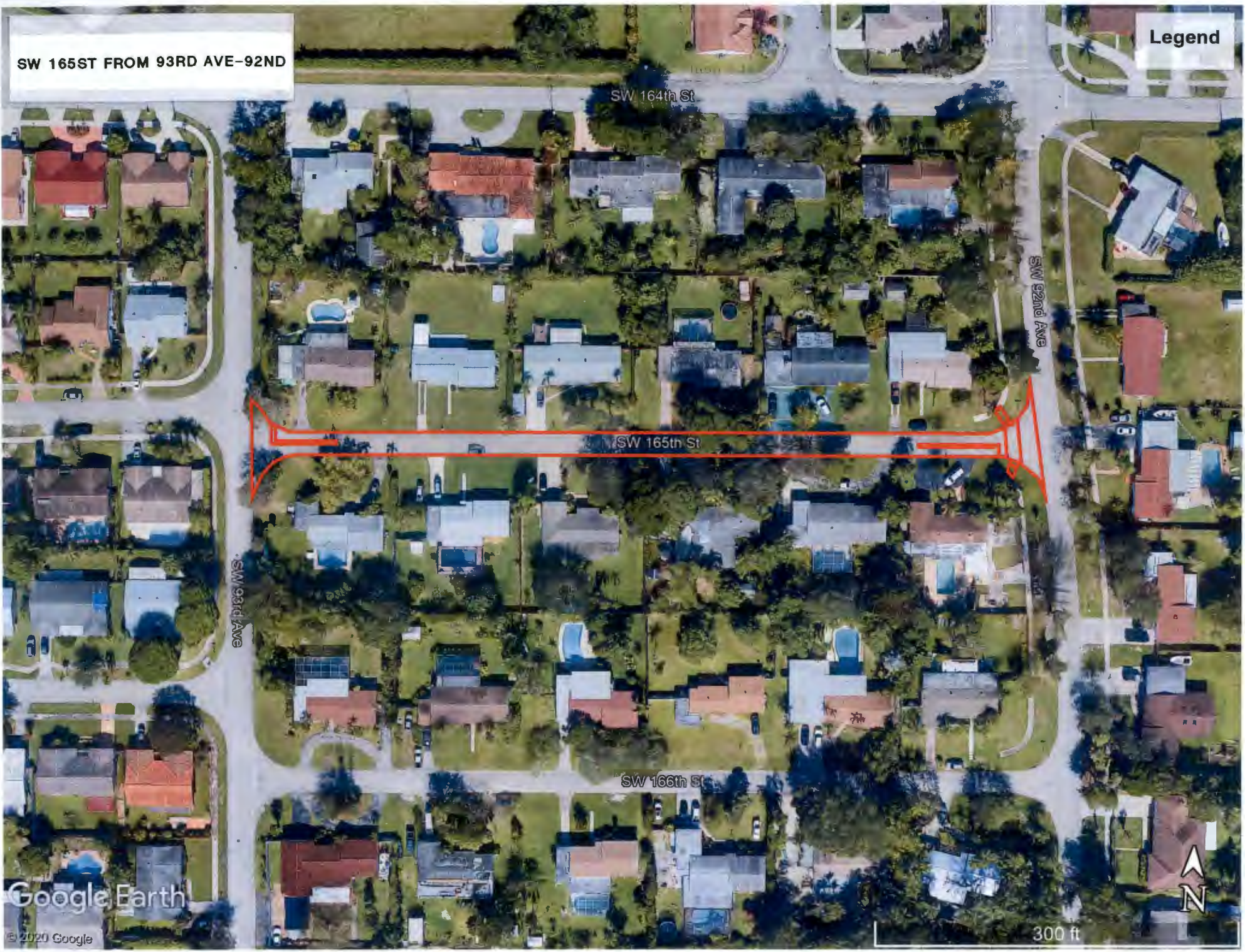
SW 166th St

Google Earth

© 2020 Google



300 ft





BID FORM 10 OF 10

LOCATION: SW 94th Avenue (From SW 170th Street to SW 168th Street) and SW 170TH Street From US-1 to SW 93RD Court - APPROX 4,900 SQ YDS

BID ITEM NO.	DESCRIPTION	UNIT	QUANTITY	UNIT PRICE	TOTAL COST
MSR-1	5' WIDE CONCRETE SIDEWALKS	LF			
MSR-2	ASPHALT CONCRETE (TYPE 1" THICK)	TON			
MSR-3	MILLING EXISTING PAVEMENT (1") PAYMENT WITH GREATER CUTS WILL BE PAID PROPORTIONALLY	SQ YDS			
MSR-4	ADJUST MANHOLE (THIS ITEM IS CONTINGENT UPON FIELD CONDITIONS AND MAY BE INCREASED, DECREASED OR ELIMINATED BY ENGINEER)	EACH			
MSR-5	ADJUST EXISTING VALVE BOXES (THIS ITEM IS CONTINGENT UPON FIELD CONDITIONS AND MAY BE INCREASED, DECREASED OR ELIMINATED BY THE ENGINEER)	EACH			
MSR-6	REFLECTIVE PAVEMENT MARKERS (CLASS B: MONO OR BI-DIRECTIONAL, ALL COLORS)	EACH			
MSR-9	TEMPORARY PAVEMENT MARKING (WHITE/YELLOW:SOLID; 6")	LINEAR FOOT			
MSR-10	YELLOW, SOLID; 6"	LINEAR FOOT			
MSR-13	TEMPORARY PAVEMENT MARKING (WHITE:SOLID;12")	LINEAR FOOT			
MSR-14	THERMOPLASTIC (WHITE:SOLID; 12")	LINEAR FOOT			
MSR-17	TEMPORARY PAVEMENT MARKING (WHITE:SOLID; 24")	LINEAR FOOT			
MSR-18	THERMOPLASTIC (WHITE:SOLID; 24")	LINEAR FOOT			
MOT	MAINTENANCE OF TRAFFIC	LUMP SUM			

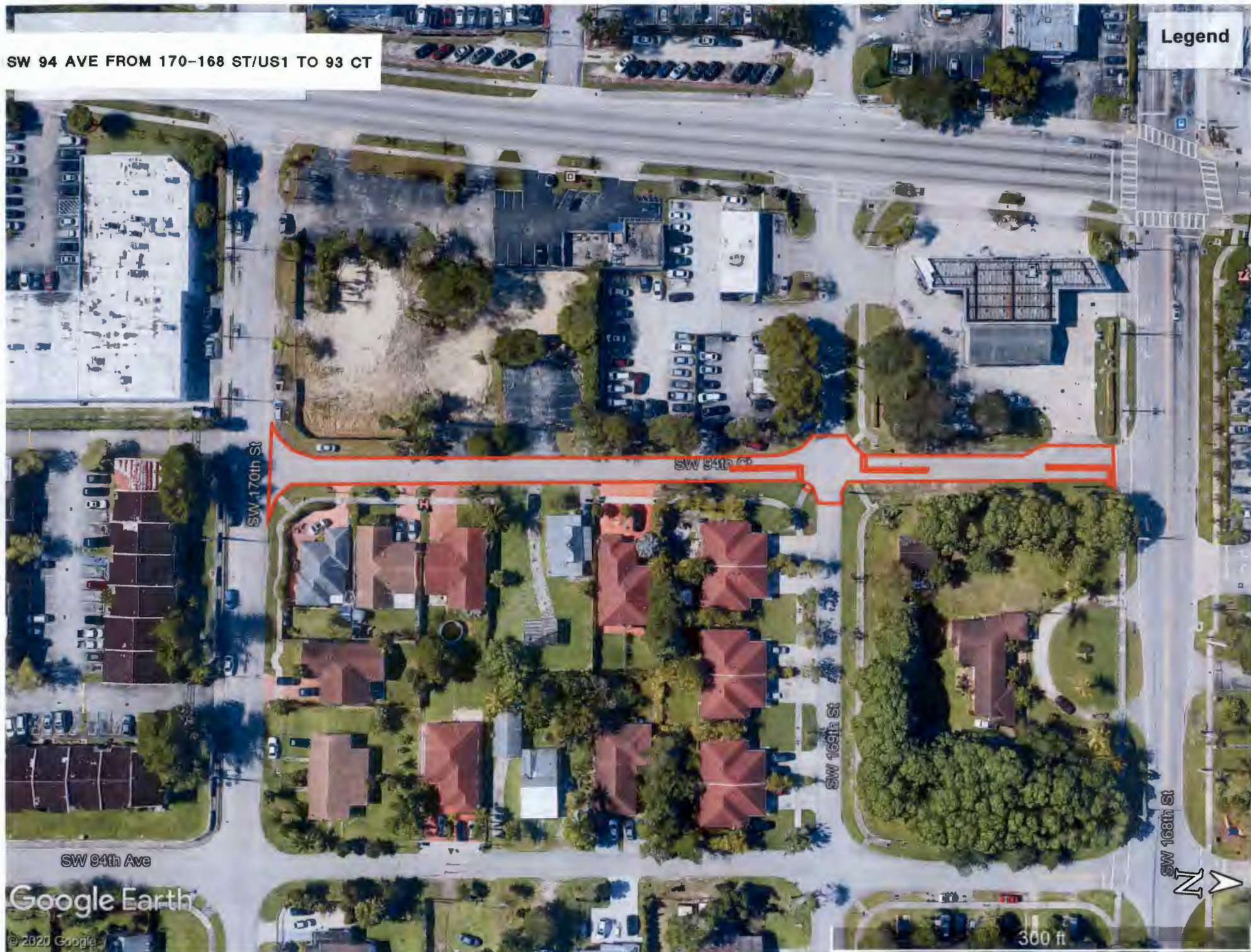
TOTAL BID FOR: SW 94th Ave From SW 170th Street to SW 168TH St and SW 170TH Street From US-1 to SW 93rd Court

\$ \_\_\_\_\_



SW 94 AVE FROM 170-168 ST/US1 TO 93 CT

Legend



Google Earth

© 2020 Google

300 ft

