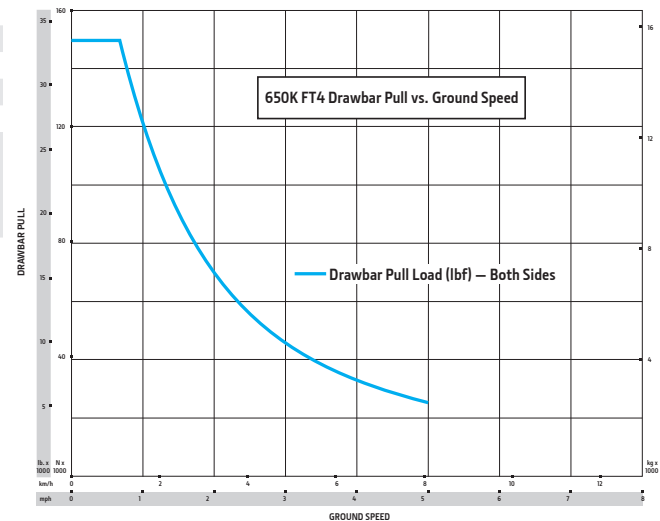




# 650K SPECIFICATIONS

|                                    |   |
|------------------------------------|---|
| <b>Engine</b>                      | <b>650K XLT / 650K LGP</b>  |
| <b>Blade Type</b>                  | <b>Power-Angle-Tilt (PAT)</b>   |
| Manufacturer and Model             | John Deere PowerTech™ PWS 4045  |
| Non-Road Emission Standard         | EPA Final Tier 4/EU Stage IV  |
| Displacement                       | 4.5L (276 cu. in.)  |
| SAE Net Rated Power                | 78 kW (104 hp) at 2,200 rpm   |
| Net Peak Torque                    | 475 Nm (350 ft.-lb.) at 1,400 rpm   |
| Aspiration                         | Turbocharged with charge-air cooler   |
| Air Cleaner                        | Dual-stage dry tube with tangential unloader  |
| <b>Cooling</b>                     |   |
| Type                               | Variable-speed suction fan with optional reversing feature  |
| Engine Coolant Rating              | -37 deg. C. (-34 deg. F)  |
| Engine Radiator                    | 10 fins per in.   |
| <b>Powertrain</b>                  |   |
| <b>Transmission</b>                | Automatic, dual-path, hydrostatic (HST) drive; load-sensing feature automatically adjusts speed and power to match changing load conditions; each individually controlled track is powered by a variable-displacement piston pump and variable-displacement motor combination; ground-speed selection buttons on single-lever steering and direction control; independently selectable reverse speed ratios of 100%, 115%, or 130% of forward ground speed; decelerator pedal controls ground speed to stop |
| System Relief Pressure             | 42 692 kPa (6,192 psi)  |
| Travel Speeds                      |   |
| Forward and Reverse                | 8.0 km/h (5.0 mph)  |
| Maximum (optional)                 | 9.7 km/h (6.0 mph)  |
| <b>Steering</b>                    | Single-lever steering, direction control, and counter-rotation; full power turns and infinitely variable track speeds provide unlimited maneuverability and optimum control; HST steering eliminates steering clutches and brakes   |
| <b>Final Drives</b>                | Triple-reduction final drives mounted independently of track frames and dozer push frames for isolation from shock loads  |
| Total Ratio                        | 52.13 to 1  |
| <b>Drawbar Pull</b>                |   |
| Maximum                            | 148 kN (33,600 lb.)   |
| At 1.9 km/h (1.2 mph)              | 108 kN (24,200 lb.)   |
| At 3.2 km/h (2.0 mph)              | 69 kN (15,600 lb.)  |
| <b>Brakes</b>                      |   |
| Service                            | HST (dynamic) braking stops the machine when the direction/steering control lever is moved to neutral or the decelerator is depressed to the detent   |
| Parking                            | Exclusive spring-applied, hydraulically released park-brake feature engages wet, multiple-disc brakes automatically whenever the engine stops, the operator depresses the decelerator pedal to the brake position, the unit is in neutral for 3 seconds (with detected motion), or the park-lock lever is in the park position; machine cannot be driven with brake applied, minimizing wearout or need for adjustment  |
| <b>Hydraulics</b>                  |   |
| Type                               | Open-center hydraulic system with fixed-displacement gear pump  |
| Pump Displacement                  | 36.4 cc   |
| System Relief Pressure             | 20 684 kPa (3,000 psi)  |
| Maximum Flow at Unloaded High Idle | 80 L/m (21 gpm)   |
| Control                            | 3-function direct-acting T-bar joystick with push-button angle function   |



While general information, pictures, and descriptions are provided, some illustrations and text may include product options and accessories NOT AVAILABLE in all regions, and in some countries products and accessories may require modifications or additions to ensure compliance with the local regulations of those countries.

# 650K SPECIFICATIONS

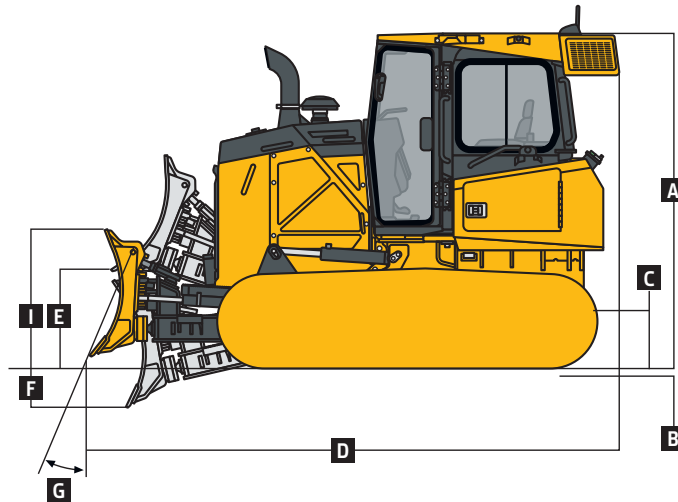


|   |   |  |
|---|---|--|
| <b>Electrical</b>   | <b>650K XLT / 650K LGP</b>  |  |
| Blade Type  | PAT   |  |
| Voltage   | 24 volts  |  |
| Capacity  |   |  |
| Battery   | 950 CCA   |  |
| Reserve   | 190 min.  |  |
| Alternator Rating   |   |  |
| Cab   | 100 amp   |  |
| Canopy  | 100 amp   |  |
| Lights  | Grille mounted (2), rear mounted (2), and rear reflectors (2)   |  |
| <b>Undercarriage</b>  | <b>650K XLT</b>   | <b>650K LGP</b>                        |
| Tracks  | John Deere DuraTrax™ features large deep-heat-treated components; pins and bushings are sealed for life; rollers and idlers are permanently sealed and lubricated; full-length track-frame covers reduce material buildup and ease cleaning |  |
| Track Gauge   | 1550 mm (61 in.)  | 1750 mm (69 in.)                       |
| Grouser Width   | 457 mm (18 in.)   | 710 mm (28 in.)                        |
| Chain   | Sealed and lubricated   | Sealed and lubricated                  |
| Shoes, Each Side  | 40  | 40                                     |
| Track Rollers, Each Side  | 7   | 7                                      |
| Track Length on Ground  | 2349 mm (92 in.)  | 2349 mm (92 in.)                       |
| Ground Contact Area   | 21 479 cm <sup>2</sup> (3,329 sq. in.)  | 33 412 cm <sup>2</sup> (5,179 sq. in.) |
| Ground Pressure   | 44.1 kPa (6.4 psi)  | 29.6 kPa (4.3 psi)                     |
| Track Pitch   | 171 mm (6.7 in.)  | 171 mm (6.7 in.)                       |
| <b>Operator Station</b>   | <b>650K XLT / 650K LGP</b>  |  |
|   | ROPS (ISO 3471 – 2008) and FOPS (ISO 3449 – 2005)   |  |
| <b>Serviceability</b>   |   |  |
| <b>Refill Capacities</b>  |   |  |
| Fuel Tank With Lockable Cap   | 202 L (53.45 gal.)  |  |
| Diesel Exhaust Fluid (DEF) Tank   | 11.8 L (3.1 gal.)   |  |
| Cooling System With Recovery Tank   | 21.1 L (5.6 gal.)   |  |
| Engine Oil With Filter  | 19 L (20 qt.)   |  |
| Hydraulic/HST Oil (common reservoir) With Filters   | 100 L (26.42 gal.)  |  |
| Final Drive (per tractor)   | 17 L (4.6 gal.)   |  |
| <b>Operating Weights</b>  | <b>650K XLT</b>   | <b>650K LGP</b>                        |
| Base Weight (with standard equipment, rollover protective structure [ROPS], full fuel tank, and 79-kg [175 lb.] operator) | 9691 kg (21,320 lb.)  | 10 156 kg (22,343 lb.)                 |
| <b>Optional Components</b>  |   |  |
| Cab With Pressurizer and Heater   | 306 kg (675 lb.)  | 306 kg (675 lb.)                       |
| Air Conditioner   |   |  |
| ROPS Canopy, Heater   | 39 kg (85 lb.)  | 39 kg (85 lb.)                         |
| ROPS Canopy and Cab   |   |  |
| Front and Door Screens  | 81 kg (179 lb.)   | 81 kg (179 lb.)                        |
| Rear Screen   | 34 kg (76 lb.)  | 34 kg (76 lb.)                         |
| Side Screens  | 43 kg (94 lb.)  | 43 kg (94 lb.)                         |
| Limb Risers (ROPS canopy and cab)   | 104 kg (229 lb.)  | 104 kg (229 lb.)                       |
| Counterweight   |   |  |
| Front   | 109 kg (240 lb.)  | 109 kg (240 lb.)                       |
| Rear  | 150 kg (330 lb.)  | 150 kg (330 lb.)                       |
| Retrieval Hitch   | 23 kg (50 lb.)  | 23 kg (50 lb.)                         |
| Drawbar, Extended Rigid   | 33 kg (72 lb.)  | 33 kg (72 lb.)                         |
| Winch   | 652 kg (1,437 lb.)  | 652 kg (1,437 lb.)                     |
| Fairlead, 4 Roller  | 85 kg (187 lb.)   | 85 kg (187 lb.)                        |
| Center Chain Guides   | 41 kg (90 lb.)  | 41 kg (90 lb.)                         |
| Full-Length Rock Guards   | 98 kg (216 lb.)   | 98 kg (216 lb.)                        |
| Maximum Life Undercarriage  | 182 kg (400 lb.)  | 182 kg (400 lb.)                       |
| Track Shoes   |   |  |
| 457 mm (18 in.)   | In base   | —                                      |
| 510 mm (20 in.)   | 83 kg (183 lb.)   | –344 kg (–760 lb.)                     |
| 610 mm (24 in.)   | —   | –172 kg (–380 lb.)                     |
| 710 mm (28 in.)   | —   | In base                                |

While general information, pictures, and descriptions are provided, some illustrations and text may include product options and accessories NOT AVAILABLE in all regions, and in some countries products and accessories may require modifications or additions to ensure compliance with the local regulations of those countries.

# 650K

| Machine Dimensions                     | 650K XLT / 650K LGP              |
|--|----------------------------------|
| <b>Blade Type</b>                      | <b>Power-Angle-Tilt (PAT)</b>    |
| A Overall Height to Roof               | 2762 mm (9 ft. 1.25 in.)         |
| B Tread Depth With Single-Bar Grouser  | 49 mm (1.9 in.)                  |
| C Ground Clearance in Dirt             | 341 mm (13.5 in.)                |
| D Overall Length                       | 4255 mm (168 in.) (14 ft. 0 in.) |
| E Blade Lift Height                    | 818 mm (32.2 in.)                |
| F Blade Digging Depth                  | 500 mm (19.7 in.)                |
| G Blade Cutting-Edge Angle, Adjustable | 52 to 60 deg.                    |

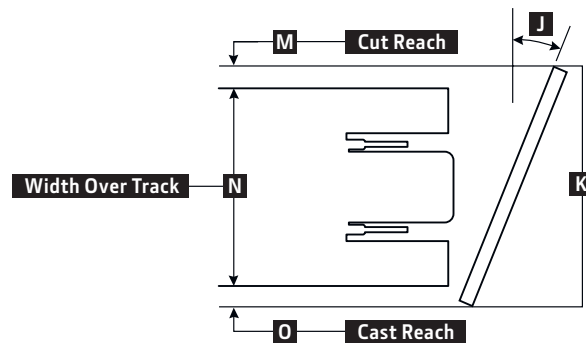
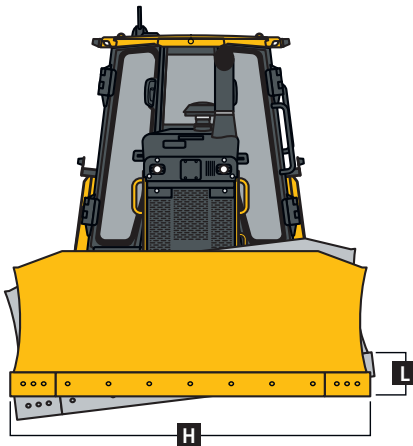


650K XLT / 650K LGP WITH POWER-ANGLE-TILT (PAT) BLADE

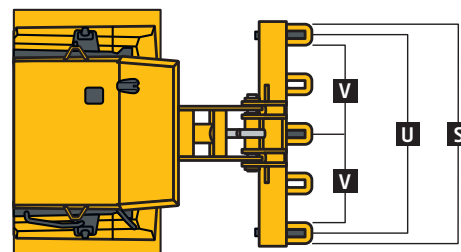
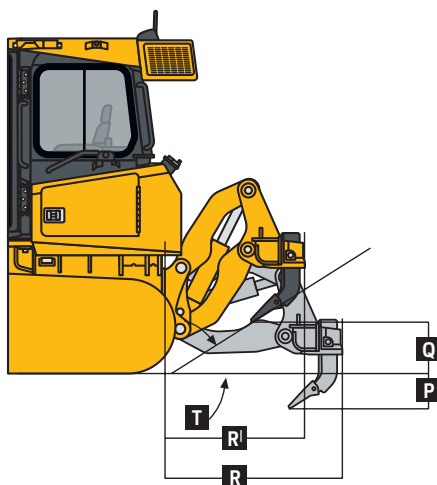
| Machine Dimensions (continued)          | 650K XLT                         | 650K LGP                         |
|---|----------------------------------|----------------------------------|
| <b>Straight</b>                         |                                  |                                  |
| H Blade Width                           | 2667 mm (105 in.) (8 ft. 9 in.)  | 2921 mm (115 in.) (9 ft. 7 in.)  |
| I Blade Height                          | 1067 mm (3 ft. 6 in.)            | 955 mm (3 ft. 2 in.)             |
| SAE Capacity                            | 2.2 m <sup>3</sup> (2.9 cu. yd.) | 2.0 m <sup>3</sup> (2.6 cu. yd.) |
| Weight                                  | 603 kg (1,330 lb.)               | 628 kg (1,385 lb.)               |
| C-Frame Assembly Weight (without blade) | 399 kg (879 lb.)                 | 399 kg (879 lb.)                 |
| J Blade Angle                           | 22.2 deg.                        | 22.2 deg.                        |
| K Overall Width With Blade Angled       | 2469 mm (8 ft. 1 in.)            | 2705 mm (8 ft. 11 in.)           |
| L Blade Tilt (uses tilt jack)           | 363 mm (14.3 in.)                | 399 mm (15.7 in.)                |
| M Cut Reach                             | 117 mm (4.6 in.)                 | 5 mm (0.2 in.)                   |
| N Width Over Track                      | 2007 mm (6 ft. 7 in.)            | 2464 mm (8 ft. 1 in.)            |
| O Cast Reach                            | 345 mm (13.6 in.)                | 236 mm (9.3 in.)                 |
| <b>Straight (option)</b>                |                                  |                                  |
| H Blade Width                           | 2921 mm (115 in.) (9 ft. 7 in.)  | 3150 mm (124 in.) (10 ft. 4 in.) |
| I Blade Height                          | 955 mm (3 ft. 2 in.)             | 894 mm (35 in.)                  |
| SAE Capacity                            | 2.0 m <sup>3</sup> (2.6 cu. yd.) | 1.9 m <sup>3</sup> (2.5 cu. yd.) |
| Weight                                  | 628 kg (1,385 lb.)               | 631 kg (1,391 lb.)               |
| C-Frame Assembly Weight (without blade) | 399 kg (879 lb.)                 | 399 kg (879 lb.)                 |
| J Blade Angle                           | 22.2 deg.                        | 22.2 deg.                        |
| K Overall Width With Blade Angled       | 2705 mm (8 ft. 11 in.)           | 2916 mm (9 ft. 7 in.)            |
| L Blade Tilt (uses tilt jack)           | 399 mm (15.7 in.)                | 429 mm (16.9 in.)                |
| M Cut Reach                             | 234 mm (9.2 in.)                 | 112 mm (4.4 in.)                 |
| N Width Over Track                      | 2007 mm (6 ft. 7 in.)            | 2464 mm (8 ft. 1 in.)            |
| O Cast Reach                            | 465 mm (18.3 in.)                | 340 mm (13.4 in.)                |

While general information, pictures, and descriptions are provided, some illustrations and text may include product options and accessories NOT AVAILABLE in all regions, and in some countries products and accessories may require modifications or additions to ensure compliance with the local regulations of those countries.

| Machine Dimensions (continued)           | 650K XLT                         | 650K LGP                         |
|--|----------------------------------|----------------------------------|
| <b>Blade Type</b>                        | <b>PAT</b>                       | <b>PAT</b>                       |
| <b>Straight (option)</b>                 |                                  |                                  |
| <b>H</b> Blade Width                     | 3150 mm (124 in.) (10 ft. 4 in.) | 3251 mm (128 in.) (10 ft. 8 in.) |
| <b>I</b> Blade Height                    | 894 mm (35 in.)                  | 955 mm (3 ft. 2 in.)             |
| SAE Capacity                             | 1.9 m <sup>3</sup> (2.5 cu. yd.) | 2.2 m <sup>3</sup> (2.9 cu. yd.) |
| Weight                                   | 631 kg (1,391 lb.)               | 694 kg (1,530 lb.)               |
| C-Frame Assembly Weight (without blade)  | 399 kg (879 lb.)                 | 399 kg (879 lb.)                 |
| <b>J</b> Blade Angle                     | 22.2 deg.                        | 22.2 deg.                        |
| <b>K</b> Overall Width With Blade Angled | 2916 mm (9 ft. 7 in.)            | 3010 mm (9 ft. 11 in.)           |
| <b>L</b> Blade Tilt (uses tilt jack)     | 429 mm (16.9 in.)                | 445 mm (17.5 in.)                |
| <b>M</b> Cut Reach                       | 340 mm (13.4 in.)                | 157 mm (6.2 in.)                 |
| <b>N</b> Width Over Track                | 2007 mm (6 ft. 7 in.)            | 2464 mm (8 ft. 1 in.)            |
| <b>O</b> Cast Reach                      | 569 mm (22.4 in.)                | 569 mm (22.4 in.)                |



| Rear Ripper  | 650K XLT / 650K LGP            |
|--|--------------------------------|
| Multi-shank parallelogram ripper with 5 pockets and 3 shanks |                                |
| Weight   | 981 kg (2,163 lb.)             |
| <b>P</b> Maximum Penetration                                 | 508 mm (20 in.)                |
| <b>Q</b> Maximum Clearance Under Tip                         | 508 mm (20 in.)                |
| <b>R</b> Overall Length, Lowered Position                    | 1450 mm (57 in.) (4 ft. 9 in.) |
| <b>R<sup>l</sup></b> Overall Length, Raised Position         | 1015 mm (40 in.) (3 ft. 4 in.) |
| <b>S</b> Overall Beam Width                                  | 1830 mm (6 ft. 0 in.)          |
| <b>T</b> Slope Angle (full raise)                            | 40 deg.                        |
| <b>U</b> Ripping Width                                       | 1670 mm (5 ft. 6 in.)          |
| <b>V</b> Distance Between Shanks                             | 806 mm (32 in.)                |



While general information, pictures, and descriptions are provided, some illustrations and text may include product options and accessories NOT AVAILABLE in all regions, and in some countries products and accessories may require modifications or additions to ensure compliance with the local regulations of those countries.

# Additional equipment

Key: ● Standard ▲ Optional or special See your John Deere dealer for further information.

| 450K | 550K | 650K | Engine  |
|------|------|------|---|
| ●    | ●    | ●    | Meets EPA Final Tier 4/EU Stage IV emissions  |
| ●    | ●    | ●    | John Deere PowerTech™ PWS 4045 4.5L engine  |
| ●    | ●    | ●    | Turbocharged and air-to-air aftercooled   |
| ●    | ●    | ●    | Electronic control with automatic engine protection                                 |
| ●    | ●    | ●    | Eco mode  |
| ●    | ●    | ●    | Dual safety element dry-type air cleaner, evacuator valve                           |
| ●    | ●    | ●    | Exhaust filter, under hood, with vertical stack                                     |
| ●    | ●    | ●    | Engine glow-plug starting system  |
| ●    | ●    | ●    | Automatic turbo cool-down timer   |
| ●    | ●    | ●    | Programmable auto-idle and auto shutdown  |
| ●    | ●    | ●    | Wet-sleeve cylinder liners  |
| ●    | ●    | ●    | Remote-mounted fuel filters with automatic electronic priming                       |
| ▲    | ▲    | ▲    | Engine coolant heater, 110 volts  |
| ●    | ●    | ●    | Exhaust stack, black  |
| ▲    | ▲    | ▲    | Exhaust stack, chrome   |
| ▲    | ▲    | ▲    | Rotary ejector engine air pre-cleaner   |
| ▲    | ▲    | ▲    | Severe-duty fuel filter and water separator with heating element                    |
| ●    | ●    | ●    | 100-amp alternator, cab and canopy  |
|      |      |      | <b>Cooling</b>  |
| ●    | ●    |      | Direct-drive cooling fan, blower type   |
|      |      | ●    | Hydraulically driven cooling fan, variable-speed suction type                       |
|      |      | ▲    | Automatic, programmable reversing-fan-drive fan                                     |
| ●    | ●    | ●    | Engine cooling rated –37 deg. C (–34 deg. F)  |
| ●    | ●    | ●    | Enclosed safety fan guard (conforms to SAE J1308 and ISO3457)                       |
| ●    | ●    | ●    | Perforated engine side shields  |
| ●    | ●    | ●    | Heavy-duty perforated grille  |
| ●    | ●    | ●    | Heavy-duty, trash-resistant radiator and high-ambient cooling package               |
| ▲    | ▲    | ▲    | Extreme-duty perforated grille with light guard                                     |
|      |      |      | <b>Powertrain</b>   |
| ●    | ●    | ●    | Dual-path hydrostatic (HST) transmission  |
| ●    | ●    | ●    | Reverse-speed ratios (100%, 115%, and 130% presets)                                 |
| ●    | ●    | ●    | Remote diagnostic test ports  |
| ●    | ●    | ●    | Operator-selectable decelerator function (hydrostats and engine or hydrostats only) |

| 450K | 550K | 650K | Powertrain (continued)   |
|------|------|------|--|
| ●    | ●    | ●    | Wet, multi-disc parking brake  |
| ●    | ●    | ●    | Full power turns with infinitely variable track speed  |
| ●    | ●    | ●    | Single-lever steering with counter-rotate function   |
| ●    | ●    | ●    | HST (dynamic) service brakes   |
| ●    | ●    | ●    | Automatic cold-weather transmission warmup system  |
| ●    | ●    | ●    | Automatic transmission derating for exceeded system temperatures   |
| ●    | ●    | ●    | 2,000-hour vertical spin-on transmission filter  |
|      |      |      | <b>Hydraulic System</b>  |
| ●    | ●    | ●    | Open-center fixed-displacement hydraulic gear pump   |
| ●    | ●    | ●    | 3-spool manual control valve for Power-Angle-Tilt (PAT)  |
| ▲    | ▲    | ▲    | 3-spool electrohydraulic (EH) control valve for PAT  |
| ▲    | ▲    | ▲    | 4-spool manual-control valve for PAT   |
| ▲    | ▲    | ▲    | 4-spool EH control valve for PAT with single auxiliary   |
| ●    | ●    | ●    | 2,000-hour vertical spin-on hydraulic filter   |
| ▲    | ▲    | ▲    | Drive-through hydraulic pump for use with winch  |
| ▲    | ▲    | ▲    | Grade-control-ready electrohydraulics  |
| ▲    | ▲    | ▲    | Slope Control system   |
|      |      | ▲    | SmartGrade™ 3D mastless grade control  |
|      |      |      | <b>Overall Vehicle</b>   |
| ●    | ●    | ●    | Front tow loop, bolt-on  |
| ●    | ●    | ●    | Reinforced engine and mid-frame bottom guards  |
| ●    | ●    | ●    | Integral transmission guard  |
| ●    | ●    | ●    | Vandal protection: Engine access door / Side tank access doors / Fuel tank / Instrument panel / Transmission reservoir / Hydraulic reservoir |
| ▲    | ▲    | ▲    | Fluid-sample valves  |
| ▲    | ▲    | ▲    | Quick-service ports  |
| ▲    | ▲    | ▲    | Forestry limb risers (sweeps)  |
| ▲    | ▲    | ▲    | Trimble-ready interface package  |
| ▲    | ▲    | ▲    | Topcon-ready interface package   |
| ▲    | ▲    | ▲    | Leica-ready interface package  |
|      |      |      | <b>Attachments</b>   |
| ▲    | ▲    | ▲    | Counterweight, front, 94 kg (207 lb.)  |
| ▲    | ▲    | ▲    | Counterweight, rear, 150 kg (330 lb.)  |
| ▲    | ▲    | ▲    | Retrieval hitch with pin   |
| ▲    | ▲    | ▲    | Extended rigid drawbar with pin for pull-type implements   |
| ▲    | ▲    | ▲    | Drawbar, extended for winch (with or without fairlead)   |

While general information, pictures, and descriptions are provided, some illustrations and text may include product options and accessories NOT AVAILABLE in all regions, and in some countries products and accessories may require modifications or additions to ensure compliance with the local regulations of those countries.

Net engine power is with standard equipment including air cleaner, exhaust system, alternator, and cooling fan at test conditions specified per ISO9249. Specifications and design subject to change without notice. Wherever applicable, specifications are in accordance with SAE standards. Except where otherwise noted, these specifications are based on units with standard equipment, rollover protective structures (ROPS), full fuel tanks, and 79-kg (175 lb.) operators.

# Additional equipment *(continued)*

Key: ● Standard ▲ Optional or special See your John Deere dealer for further information.

| 450K | 550K | 650K | Attachments <i>(continued)</i>  |
|------|------|------|---|
| ▲    | ▲    | ▲    | Rear ripper, parallelogram, 3 shank, 5 pocket                           |
| ▲    | ▲    | ▲    | Winch, John Deere 4000, power in/free spool out OR power out            |
| ▲    | ▲    | ▲    | Winch, John Deere 4000, low speed, power in/free spool out OR power out |
| ▲    | ▲    | ▲    | 4-roller fairlead for winch   |
| ▲    | ▲    | ▲    | Root-rake blade attachment  |

| Undercarriage |   |   |   |
|---------------|---|---|---|
| ●             | ● | ● | Full-length, smooth-surface track frame covers        |
| ●             | ● | ● | Chain guides, front and rear                          |
| ●             | ● | ● | Maximum Life undercarriage system with SC-2™ bushings |
| ▲             | ▲ | ▲ | Extended Life undercarriage with SC-2 bushings        |
| ▲             | ▲ | ▲ | Heavy-duty sealed and lubricated undercarriage        |
| ▲             | ▲ | ▲ | Full-length rock guards                               |
| ●             | ● | ● | Double-flange rollers                                 |

| STD | LGP | 450K Shoes                       |
|-----|-----|----------------------------------|
| ●   |     | 406-mm (16 in.) moderate service |
|     | ●   | 610-mm (24 in.) moderate service |

| STD | LGP | 550K Shoes                       |
|-----|-----|----------------------------------|
| ●   | ▲   | 457-mm (18 in.) moderate service |
|     | ●   | 610-mm (24 in.) moderate service |

| XLT | LGP | 650K Shoes  |
|-----|-----|---|
| ●   | ▲   | 457-mm (18 in.) moderate service                      |
| ▲   | ▲   | 510-mm (20 in.) moderate service with clipped corners |
|     | ▲   | 610-mm (24 in.) moderate service                      |
|     | ●   | 710-mm (28 in.) moderate service with clipped corners |

| Canopy | Cab | Operator's Station / Electrical   |
|--------|-----|---|
| ●      | ●   | Retractable seat belts, 76 mm (3 in.) (conform to SAE J386)                                   |
| ●      | ●   | Accessories: Convex wide-angle interior rearview mirror / High cushions (2) / Cup holders (2) |
| ●      | ●   | Power port (cab includes two power ports)   |
| ●      | ●   | Lockable dash-mounted storage compartment   |
|        | ●   | Air conditioner and heater, 24,000 Btu  |
|        | ●   | Tinted glass  |
|        | ●   | Dome light  |

| Canopy | Cab | Operator's Station / Electrical <i>(continued)</i>   |
|--------|-----|--|
|        | ●   | Wipers, intermittent with washers: front window and left and right doors   |
|        | ▲   | Rear wiper and washer  |
| ▲      | ▲   | Full screens   |
| ▲      | ▲   | Rear window screen   |
| ●      |     | Standard seat, vinyl with heavy-duty air suspension  |
|        | ●   | Standard seat, fabric with heavy-duty air suspension   |
|        | ▲   | Deluxe seat, heated with heavy-duty air suspension and leather bolstered   |
| ▲      | ●   | Under-seat heater  |
|        | ●   | AM/FM/Weather Band (WB) radio with USB and auxiliary port and MP3 player front plug-in   |
|        | ▲   | Premium radio with Bluetooth®, AM/FM/WB radio with USB and auxiliary port, remote auxiliary, and remote USB port   |
|        | ●   | Radio-area storage slot  |
| ●      | ●   | Lockable master electrical disconnect switch   |
| ●      | ●   | Multifunction/multi-language LCD monitor: Analog display (fuel level, coolant temperature, and engine oil pressure) / Digital display (engine rpm, charge pressure, hours, DPF soot level, and transmission direction/speed range) |
| ▲      | ▲   | Multifunction/multi-language 178-mm (7 in.) color LCD monitor for Slope Control: Tachometer, hour meter, transmission direction and speed (forward/reverse), exhaust filter status, ambient temperature, and clock                 |
| ●      | ●   | Built-in diagnostics: Diagnostic-code details / Sensor values / Calibrations / Individual circuit tester   |
| ●      | ●   | Keyless start with multiple security modes   |
| ●      | ●   | Battery, dual, 24 volts  |
| ●      | ●   | Lights: LED, grille-mounted front (2) and halogen, cab-mounted rear (2)  |
| ▲      | ▲   | LED lights: grille-mounted front (2), cab-mounted front (2), and rear (2)  |
|        | ▲   | External-mounted attachment mirror   |
| ●      | ●   | JDLINK™ wireless communication system (available in specific countries; see your dealer for details)   |

While general information, pictures, and descriptions are provided, some illustrations and text may include product options and accessories NOT AVAILABLE in all regions, and in some countries products and accessories may require modifications or additions to ensure compliance with the local regulations of those countries.

Net engine power is with standard equipment including air cleaner, exhaust system, alternator, and cooling fan at test conditions specified per ISO9249. Specifications and design subject to change without notice. Wherever applicable, specifications are in accordance with SAE standards. Except where otherwise noted, these specifications are based on units with standard equipment, rollover protective structures (ROPS), full fuel tanks, and 79-kg (175 lb.) operators.