

CONSULTANTS

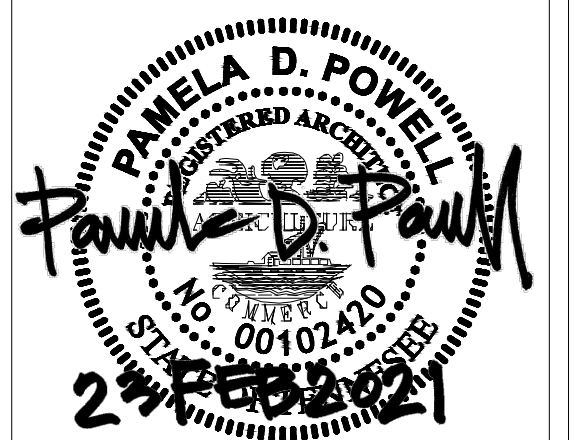
PROJECT

City of Adams - ADA  
7617 Highway 41 N,  
Suite 101  
Adams, TN 37010

ISSUES & REVISIONS

1	REVIEW/COORDINATION	25JAN21
2	REVIEW	12FEB21
3	PERMIT/CONSTRUCTION	23FEB21

LICENSE



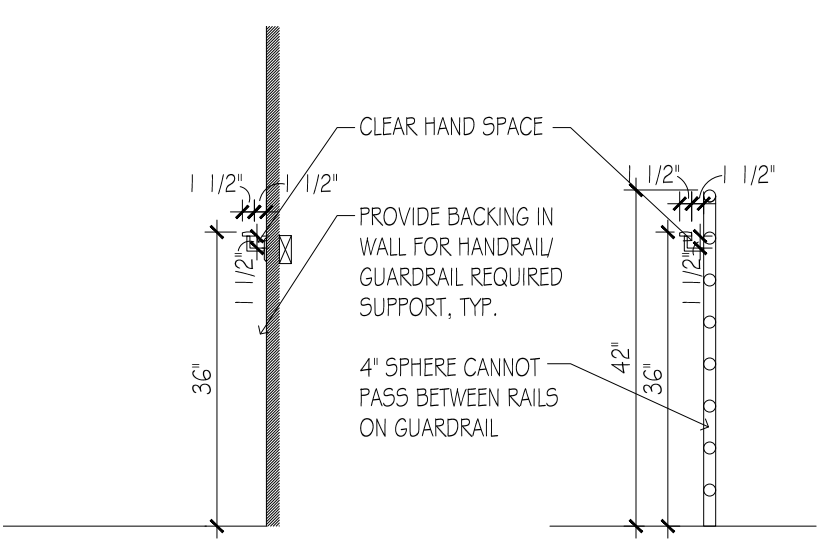
DESCRIPTION  
FLOOR PLANS,  
ELEVATIONS +  
DETAIL

SHEET NO.

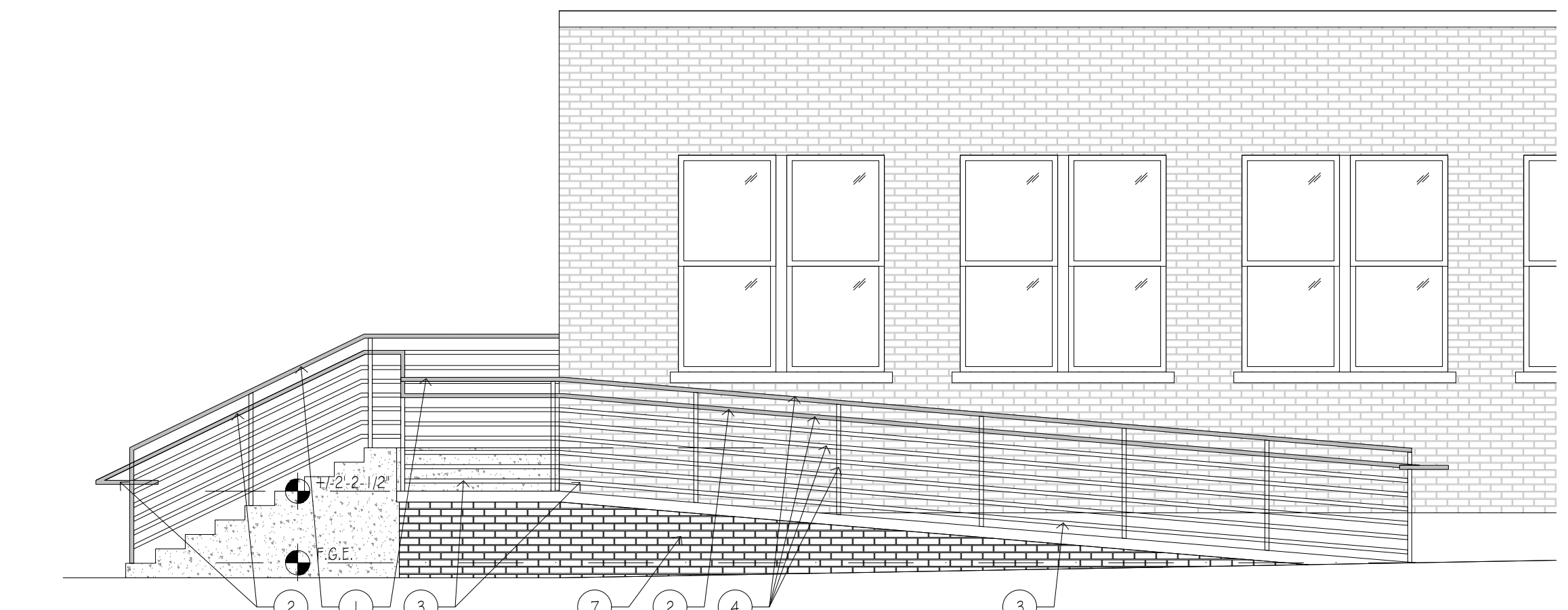
**A2.1**

KEY NOTES

- 1 GUARDRAILS AT 42" ABOVE FINISH RAMP OR LANDING SURFACE - SHALL BE PROVIDED WHERE HEIGHT OF RAMP EXCEEDS 30" ABOVE FINISH GRADE. GUARDRAILS SHALL BE CONSTRUCTED WHERE A 4" DIAMETER SPHERE CAN NOT PASS BETWEEN THE RAILS, TYPICAL.
- 2 HANDRAILS TO BE MOUNTED AT 36" ABOVE FINISH SURFACE, ON BOTH SIDES OF RAMPS AND STAIRS, TYPICAL. HANDRAILS TO BE 1-1/2" WIDE WITH 1-1/2" SPACE BETWEEN THE GUARDRAILWALL AND THE HANDRAIL. ALLOW GRASPING OF THE RAIL. AT STAIRS AND RAMP - AT THE TOP OF HANDRAIL EXTENSIONS TO EXTEND 12" HORIZONTALLY BEYOND THE TOP STEP/RAMP, AND AT THE BOTTOM TO EXTEND 12" ON THE RAMP, AND 12" + THE WIDTH OF THE STAIR ON THE NEW STAIR. HANDRAILS TO WRAP CONTINUOUSLY BACK AROUND THE BOTTOM, MAINTAINING THE LENGTH & HEIGHT, OR CONTINUE AND RETURN INTO THE BUILDING. SEE DETAIL 7/A2.1
- 3 EDGE PROTECTION RAILING SHALL BE MOUNTED WITH THE BOTTOM OF THE RAILING AT 3" ABOVE FINISH RAMP AND LANDING SURFACES, AND SHALL BE CONSTRUCTED WHERE A 4" DIAMETER SPHERE CAN NOT PASS BETWEEN THE RAIL AND THE RAMP/LANDING SURFACE, TYPICAL.
- 4 HANDRAILS AND GUARDRAILS TO BE CONSTRUCTED OF ALUMINUM - SIMILAR TO THE EXISTING RAILINGS AT THE FRONT ENTRY - WITH THE CAPACITY TO SUPPORT A POINT LOAD OF 250lbs.
- 5 EXISTING STAIRS, RAMP AND LANDING TO BE REMOVED AND REPLACED WITH NEW CONCRETE LANDING AND STAIRS AT RESTAURANT SIDE ENTRY. STAIRS TO HAVE A MAX. RISE OF 7" AND A MIN. RUN OF 11". TREADS AND RISERS TO BE UNIFORM IN SIZE AND SHAPE. THE UPPER LANDING TO BE LEVEL WITH THE INTERIOR FLOOR ELEVATION TO PROVIDE AN ACCESSIBLE ENTRANCE. MAX. RAMP SLOPE TO BE 1:12 AT LANDING AND CROSS SLOPE AT RAMP TO BE MAX. SLOPE OF 1:48.
- 6 EXISTING STAIRS TO REMAIN AT FRONT ENTRANCE, AND NEW RAMP TO COORDINATE WITH THE EXISTING. SEE STRUCTURAL DRAWINGS FOR CONNECTION TO EXISTING. SEE NOTE 5 FOR RAMP REQUIREMENTS.
- 7 BRICK TO BE INSTALLED ON FACE OF NEW RAMP SIDES, TYPICAL. BRICK TO MATCH AS CLOSELY AS POSSIBLE, THE PATTERN AND COLOR OF THE EXISTING. IF THIS IS NOT POSSIBLE - NOTIFY ARCHITECT AND A NEW COMPLEMENTARY PATTERN AND COLOR CAN BE SELECTED. SAMPLES TO BE PROVIDED TO THE OWNER FOR DETERMINATION PRIOR TO START OF CONSTRUCTION.
- 8 MIN. DIMENSIONS FOR RAMP 4 STAIRS ARE SHOWN ON PLAN. CLEAR DIMENSION BETWEEN HANDRAILS AT RAMPS TO BE 3'-0", MIN. TYP.
- 9 MINIMUM LANDING CLEAR DIMENSIONS TO BE 5'-0" IN BOTH DIRECTIONS, TYP.
- 10 EXISTING HANDRAIL TO REMAIN THIS SIDE.
- 11 COORDINATE WITH THE CITY OF ADAMS ON SPECIES AND QUANTITY - TO PLANT NEW SHRUBS TO REPLACE WHERE THE WORK REMOVES EXISTING, TYPICAL.
- 12 NEW STAIR, RAMP 4 LANDING SURFACE TO BE BRUSHED CONCRETE FINISH - PROVIDING A SLIP-RESISTANT SURFACE. PROVIDE A SEALER THAT WILL MINIMIZE THE DAMAGE CAUSED BY SALT - USED FOR WINTER ICE MELTING, TYPICAL.
- 13 NEW LEVEL LANDING OVER EXISTING STAIRS.
- 14 PROVIDE NEW CONCRETE LEVEL LANDING OUTSIDE EXISTING ENTRY DOOR - LEVEL FROM THRESHOLD TO MINIMUM DIMENSION SHOWN. BEYOND THE LANDING SLOPE TO PARKING LEVEL IN THE DIRECTION THAT LEAST IMPACTS PARKING, DOWNPOUT 4 SIDEWALK. SLOPE TO BE 1:12 MAX.
- 15 NEW CONCRETE LEVEL LANDING, 5' WIDE MIN. - TIE INTO EXISTING PATH



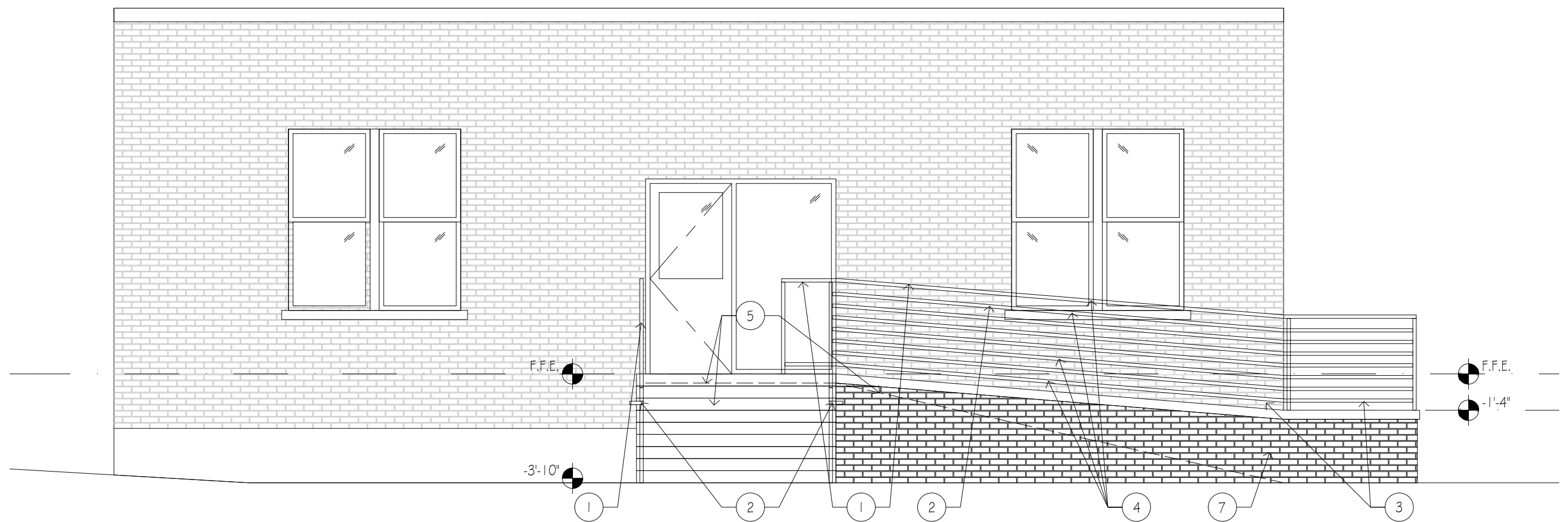
7 HANDRAIL DETAIL  
A2.1 SCALE: 1/2" = 1'-0"



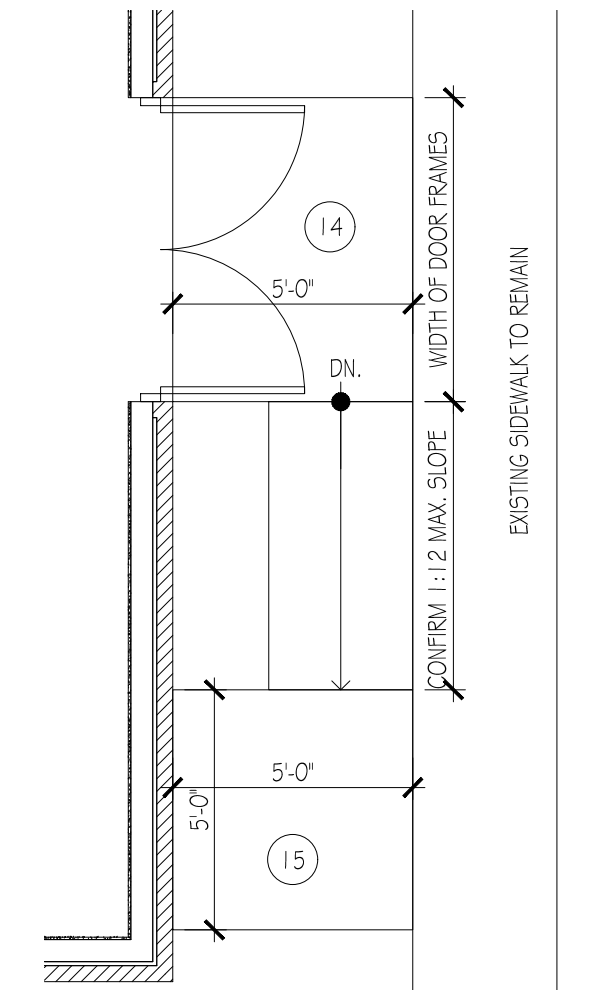
5 FRONT ELEVATION - RESTAURANT  
A2.1 SCALE: 1/4" = 1'-0"



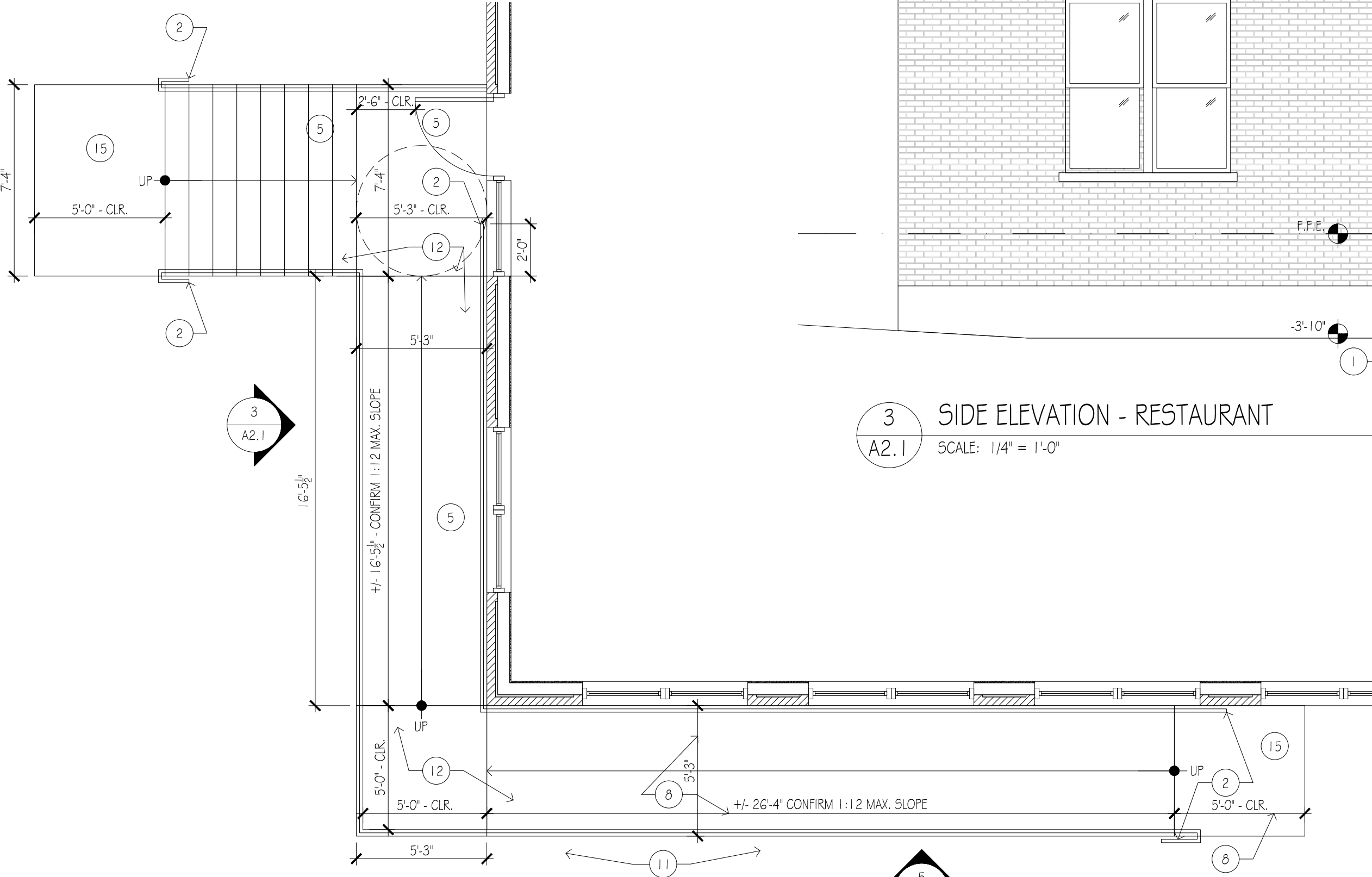
6 FRONT ELEVATION - CITY ENTRY  
A2.1 SCALE: 1/4" = 1'-0"



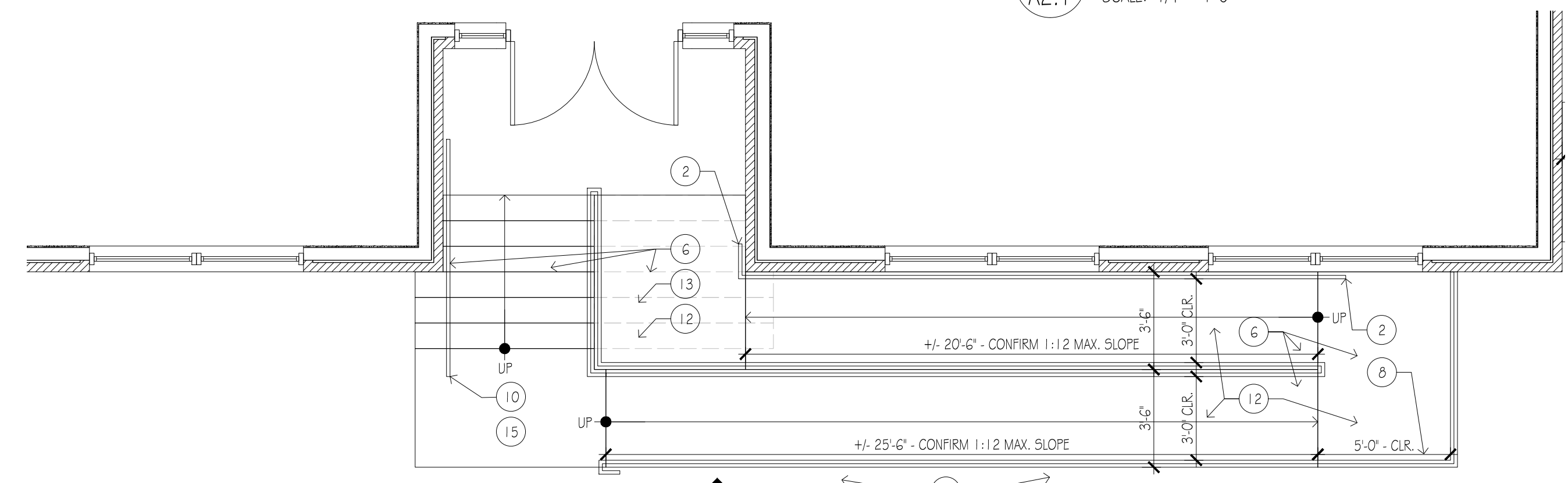
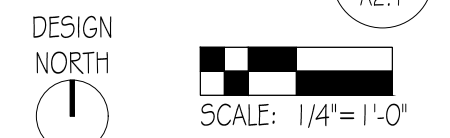
3 SIDE ELEVATION - RESTAURANT  
A2.1 SCALE: 1/4" = 1'-0"



4 GYM SIDE ENTRY PLAN  
A2.1 SCALE: 1/4" = 1'-0"



1 FLOOR PLAN - RESTAURANT ENTRY  
A2.1 SCALE: 1/4" = 1'-0"



2 FLOOR PLAN - CITY ENTRY  
A2.1 SCALE: 1/4" = 1'-0"