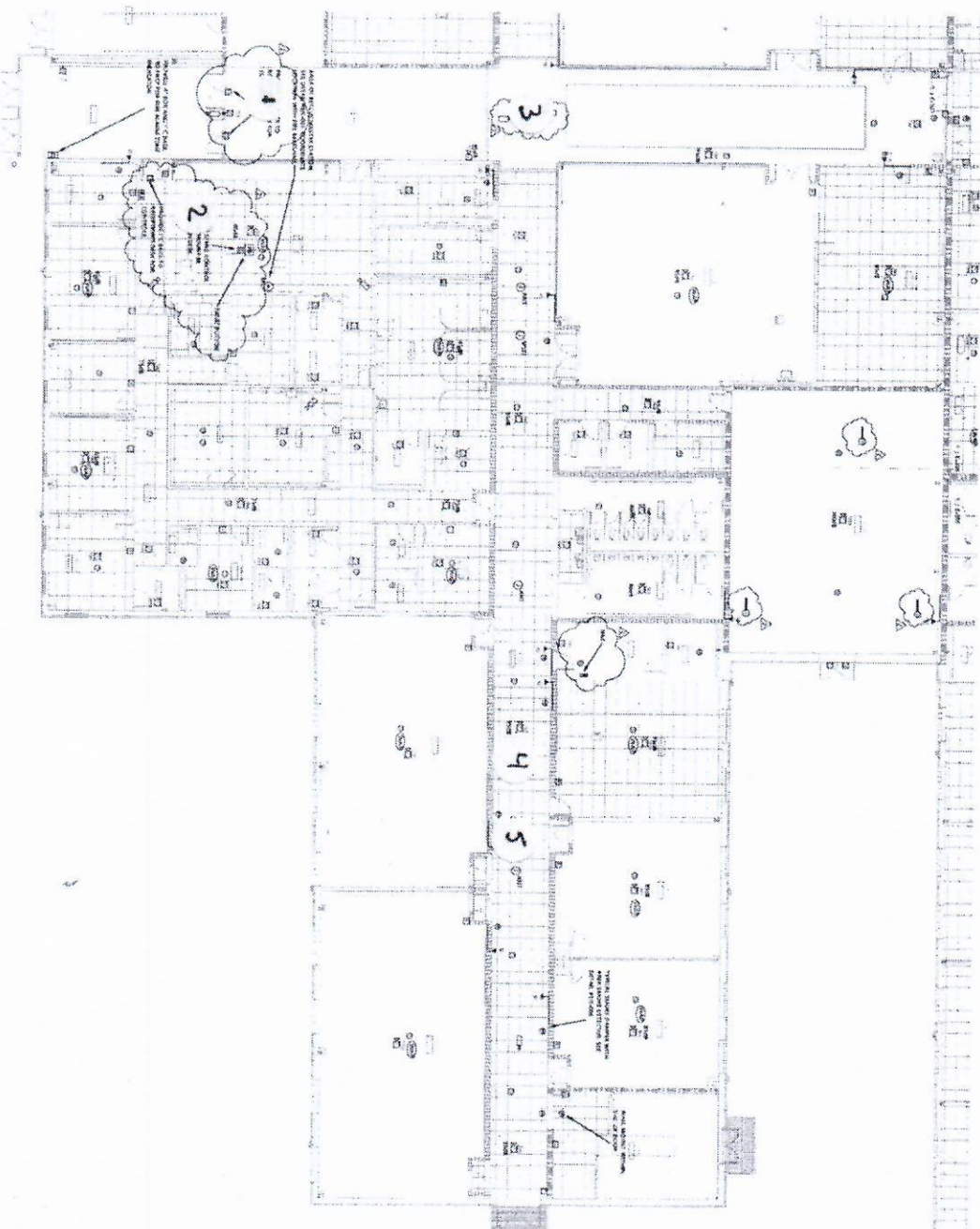


Camera #	Model	Notes	Indoor	Outdoor	GYM
1	15C 180 degree	drop ceiling mount kit	1		
2	12 MP Fisheye		1		
3	15C 180 degree	hard ceiling mount kit hardware	1		
4	4MP DC1 Camera		1		
5	4MP DC1 Camera		1		
6	12 MP Fisheye	stairwell camera	1		
7	12 MP Fisheye	stairwell camera	1		
8	4MP D1 Camera	wall mount	1		
9	4MP D1 Camera	wall mount	1		
10	4MP DC1 Camera		1		
11	4MP DC1 Camera		1		
12	4MP DC1 Camera		1		
13	15C 180 degree	hard ceiling mount kit hardware	1		
14	12 MP Fisheye	stairwell camera	1		
15	12 MP Fisheye	stairwell camera	1		
16	4MP DC1 Camera		1		
17	4MP DC1 Camera		1		
18	4MP DC1 Camera		1		
19	4MP DC1 Camera		1		
20	4MP DC1 Camera		1		
21	4MP DC1 Camera		1		
22	4MP DC1 Camera		1		
23	4MP DC1 Camera		1		
24	4MP DC1 Camera		1		
25	4MP DC1 Camera		1		
26	4MP DC1 Camera		1		
27	4MP DC1 Camera		1		
28	15C 180 degree	drop ceiling mount kit	1		
29	4MP DC1 Camera		1		
30	15C 180 degree	wall pendant mount kit	1		
31	15C 180 degree	wall pendant mount kit	1		
32	15C 180 degree	wall pendant mount kit	1		
33	24C 180 degree	wall pendant mount kit	1		
34	24C 180 degree	wall pendant mount kit	1		
35	2MP H5M DO1-IR		1		
36	2MP H5M DO1-IR		1		
37	2MP H5M DO1-IR		1		
38	15C 180 degree	drop ceiling mount kit	1		
39	2MP H5M DO1-IR		1		
40	12 MP Fisheye	stairwell camera	1		
41	4MP DC1 Camera		1		
42	4MP DC1 Camera		1		
43	4MP DC1 Camera		1		
44	4MP DC1 Camera		1		
45	4MP DC1 Camera		1		
46	4MP DC1 Camera		1		
47	4MP DC1 Camera		1		
48	4MP DC1 Camera		1		
49	4MP DC1 Camera		1		
50	4MP DC1 Camera		1		

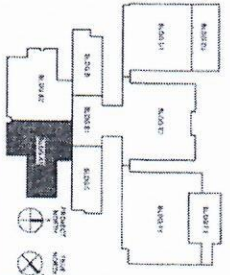
51	24C 180 degree	wall pendant mount kit	1	
52	24C 180 degree	wall pendant mount kit	1	
53	8MP DO1-IR	wall mount		1
54	8MP DO1-IR	wall mount		1
55	8MP DO1-IR	wall mount		1
56	8MP DO1-IR	wall mount		1
57	12 MP Fisheye	stairwell camera	1	
58	4MP DC1 Camera		1	
59	4MP DC1 Camera		1	
60	12 MP Fisheye	stairwell camera	1	
61	12 MP Fisheye	stairwell camera	1	
62	4MP DC1 Camera		1	
63	15C 180 degree	drop ceiling mount kit	1	
64	15C 180 degree	drop ceiling mount kit	1	
65	12 MP Fisheye		1	
66	4MP DC1 Camera		1	
67	4MP DC1 Camera		1	
68	4MP DC1 Camera		1	
69	4MP DC1 Camera		1	
70	4MP DC1 Camera		1	
71	4MP DC1 Camera		1	
72	12 MP Fisheye	stairwell camera	1	
73	8MP DO1-IR	wall mount		1
74	8MP DO1-IR	wall mount		1
75	15C 180 degree	drop ceiling mount kit	1	
76	2MP H5M DO1-IR		1	
77	4MP DC1 Camera		1	
78	4MP DC1 Camera		1	
79	12 MP Fisheye	stairwell camera	1	
80	12 MP Fisheye	stairwell camera	1	
81	4MP DC1 Camera		1	
82	4MP DC1 Camera		1	
83	2MP H5M DO1-IR		1	
84	12 MP Fisheye		1	
85	12 MP Fisheye	stairwell camera	1	
86	4MP DC1 Camera		1	
87	4MP DC1 Camera		1	
88	4MP DC1 Camera		1	
89	4MP DC1 Camera		1	
90	4MP DC1 Camera		1	
91	4MP DC1 Camera		1	
92	12 MP Fisheye	stairwell camera	1	
93	12 MP Fisheye	stairwell camera	1	
94	2MP H5M DO1-IR		1	
95	15C 180 degree	drop ceiling mount kit	1	
96	2MP H5M DO1-IR		1	
97	12 MP Fisheye	stairwell camera	1	
98	2MP H5M DO1-IR		1	
99	24C 180 degree	wall pendant mount kit		1
100	24C 180 degree	wall pendant mount kit		1
101	24C 180 degree	wall pendant mount kit		1

102	24C 270 degree	Corner mount kit		1
103	24C 270 degree	Corner mount kit		1
104	24C 180 degree	wall pendant mount kit		1
105	24C 270 degree	Corner mount kit		1
106	24C 180 degree	wall pendant mount kit		1
107	24C 270 degree	Corner mount kit		1
108	24C 270 degree	Corner mount kit		1
109	24C 180 degree	wall pendant mount kit		1
110	24C 270 degree	Corner mount kit		1
111	24C 180 degree	wall pendant mount kit		1
112	24C 180 degree	wall pendant mount kit		1
113	24C 180 degree	wall pendant mount kit		1
114	24C 180 degree	wall pendant mount kit		1
115	24C 180 degree	wall pendant mount kit		1
116	24C 180 degree	wall pendant mount kit		1
117	24C 180 degree	wall pendant mount kit		1
118	24C 180 degree	wall pendant mount kit		1
119	24C 180 degree	wall pendant mount kit		1
120	24C 270 degree	Corner mount kit		1
121	24C 180 degree	wall pendant mount kit		1
122	24C 180 degree	wall pendant mount kit		1
123	24C 270 degree	Corner mount kit		1
124	24C 180 degree	wall pendant mount kit		1
125	4MP Bullet	J-Box		1
126	24C 270 degree	hard ceiling mount kit hardware		1
127	15C 180 degree	hard ceiling mount kit hardware		1
128	15C 180 degree	hard ceiling mount kit hardware		1
			92	27
				9

1 FIRST FLOOR RCP - SPECIAL SYSTEMS - BLDG A1



GENERAL NOTES - SPECIAL SYSTEMS
 1. CONSULT THE SPECIAL SYSTEMS DESIGNER FOR THE LATEST REVISIONS TO THE SPECIAL SYSTEMS DESIGN. THE SPECIAL SYSTEMS DESIGNER SHALL BE RESPONSIBLE FOR THE SPECIAL SYSTEMS DESIGN. THE SPECIAL SYSTEMS DESIGNER SHALL BE RESPONSIBLE FOR THE SPECIAL SYSTEMS DESIGN. THE SPECIAL SYSTEMS DESIGNER SHALL BE RESPONSIBLE FOR THE SPECIAL SYSTEMS DESIGN.



PARTITION LEGEND
 1. PARTITION SYSTEMS SHALL BE AS SHOWN ON THE PARTITION LEGEND. THE PARTITION SYSTEMS SHALL BE AS SHOWN ON THE PARTITION LEGEND. THE PARTITION SYSTEMS SHALL BE AS SHOWN ON THE PARTITION LEGEND. THE PARTITION SYSTEMS SHALL BE AS SHOWN ON THE PARTITION LEGEND. THE PARTITION SYSTEMS SHALL BE AS SHOWN ON THE PARTITION LEGEND.

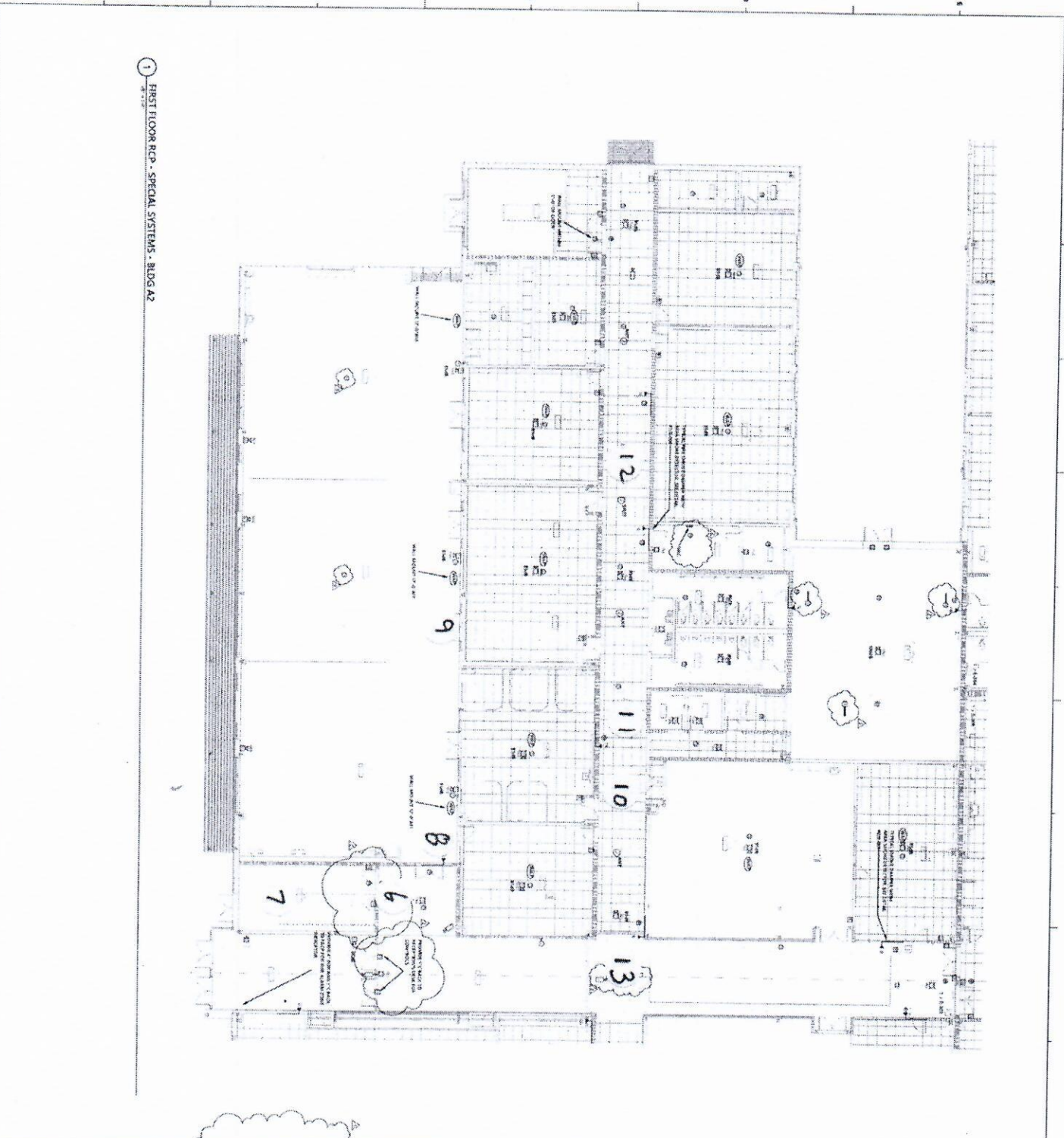
KEYPLAN
 1. THE KEYPLAN SHOWS THE LOCATION OF THE FIRST FLOOR WITHIN THE OVERALL BUILDING FOOTPRINT. THE KEYPLAN SHALL BE AS SHOWN ON THE KEYPLAN. THE KEYPLAN SHALL BE AS SHOWN ON THE KEYPLAN. THE KEYPLAN SHALL BE AS SHOWN ON THE KEYPLAN. THE KEYPLAN SHALL BE AS SHOWN ON THE KEYPLAN.



WEST RIDGE HIGH SCHOOL



FIRST FLOOR PLAN - BLDG A1 - SPECIAL SYSTEMS
 E-302



1 FIRST FLOOR RCP - SPECIAL SYSTEMS - BLDG 42

GENERAL NOTES - PARTIAL
 CONSULTING ENGINEER: J. L. HARRIS, INC.
 CONTRACTOR: WEST RIDGE HIGH SCHOOL DISTRICT
 PROJECT: WEST RIDGE HIGH SCHOOL
 SHEET: E-303

STURMAN GROUP
 WEST RIDGE HIGH SCHOOL

Cain Rash West
 ARCHITECTS

LS3P

optima
 engineering

E-303

WEST RIDGE HIGH SCHOOL DISTRICT
 1000 WEST RIDGE AVENUE
 WEST RIDGE, MO 64078

STURMAN GROUP
 1000 WEST RIDGE AVENUE
 WEST RIDGE, MO 64078

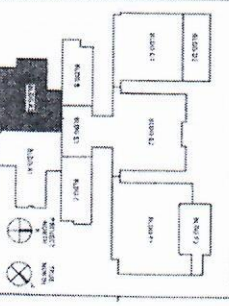
Cain Rash West
 1000 WEST RIDGE AVENUE
 WEST RIDGE, MO 64078

LS3P
 1000 WEST RIDGE AVENUE
 WEST RIDGE, MO 64078

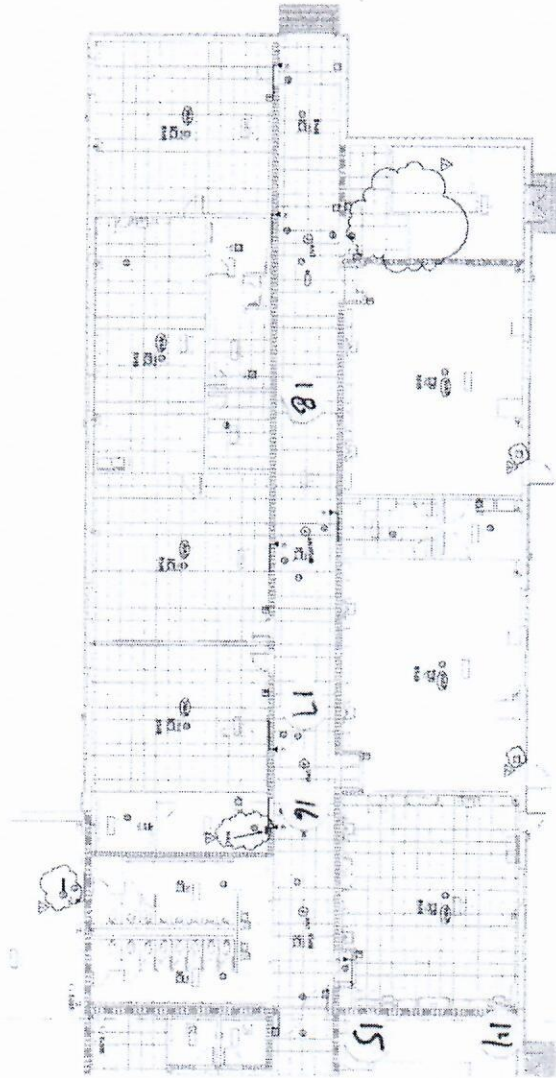
optima
 1000 WEST RIDGE AVENUE
 WEST RIDGE, MO 64078

PARTITION LEGEND

1/2" Gypsum Board	1/2" Gypsum Board
5/8" Gypsum Board	5/8" Gypsum Board
1" Gypsum Board	1" Gypsum Board
1 1/2" Gypsum Board	1 1/2" Gypsum Board
2" Gypsum Board	2" Gypsum Board
2 1/2" Gypsum Board	2 1/2" Gypsum Board
3" Gypsum Board	3" Gypsum Board
4" Gypsum Board	4" Gypsum Board
5" Gypsum Board	5" Gypsum Board
6" Gypsum Board	6" Gypsum Board
8" Gypsum Board	8" Gypsum Board
10" Gypsum Board	10" Gypsum Board
12" Gypsum Board	12" Gypsum Board
14" Gypsum Board	14" Gypsum Board
16" Gypsum Board	16" Gypsum Board
18" Gypsum Board	18" Gypsum Board
20" Gypsum Board	20" Gypsum Board
24" Gypsum Board	24" Gypsum Board
30" Gypsum Board	30" Gypsum Board
36" Gypsum Board	36" Gypsum Board
42" Gypsum Board	42" Gypsum Board
48" Gypsum Board	48" Gypsum Board
54" Gypsum Board	54" Gypsum Board
60" Gypsum Board	60" Gypsum Board
72" Gypsum Board	72" Gypsum Board
84" Gypsum Board	84" Gypsum Board
96" Gypsum Board	96" Gypsum Board
108" Gypsum Board	108" Gypsum Board
120" Gypsum Board	120" Gypsum Board



1 FIRST FLOOR RCP - SPECIAL SYSTEMS - BLDG B



SPECIAL NOTES: SEE DRAWING E-304 FOR THE LOCATION OF THE SPECIAL SYSTEMS. THE SPECIAL SYSTEMS ARE TO BE INSTALLED IN ACCORDANCE WITH THE REQUIREMENTS OF THE 2015 IBC AND THE 2015 IBC SCHEDULE 508. THE SPECIAL SYSTEMS ARE TO BE INSTALLED IN ACCORDANCE WITH THE REQUIREMENTS OF THE 2015 IBC AND THE 2015 IBC SCHEDULE 508. THE SPECIAL SYSTEMS ARE TO BE INSTALLED IN ACCORDANCE WITH THE REQUIREMENTS OF THE 2015 IBC AND THE 2015 IBC SCHEDULE 508.

WILLIAM COUNTY
WEST RIDGE HIGH SCHOOL

Calm
Rash
West
ARCHITECT

LS3P

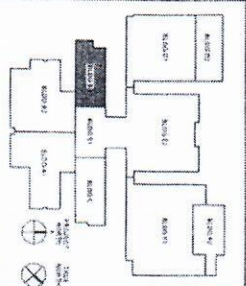
optimo
CONSTRUCTION MANAGEMENT



PARTITION LEGEND

1. PARTITION SYSTEMS TO BE INSTALLED IN ACCORDANCE WITH THE REQUIREMENTS OF THE 2015 IBC AND THE 2015 IBC SCHEDULE 508. THE PARTITION SYSTEMS ARE TO BE INSTALLED IN ACCORDANCE WITH THE REQUIREMENTS OF THE 2015 IBC AND THE 2015 IBC SCHEDULE 508. THE PARTITION SYSTEMS ARE TO BE INSTALLED IN ACCORDANCE WITH THE REQUIREMENTS OF THE 2015 IBC AND THE 2015 IBC SCHEDULE 508.

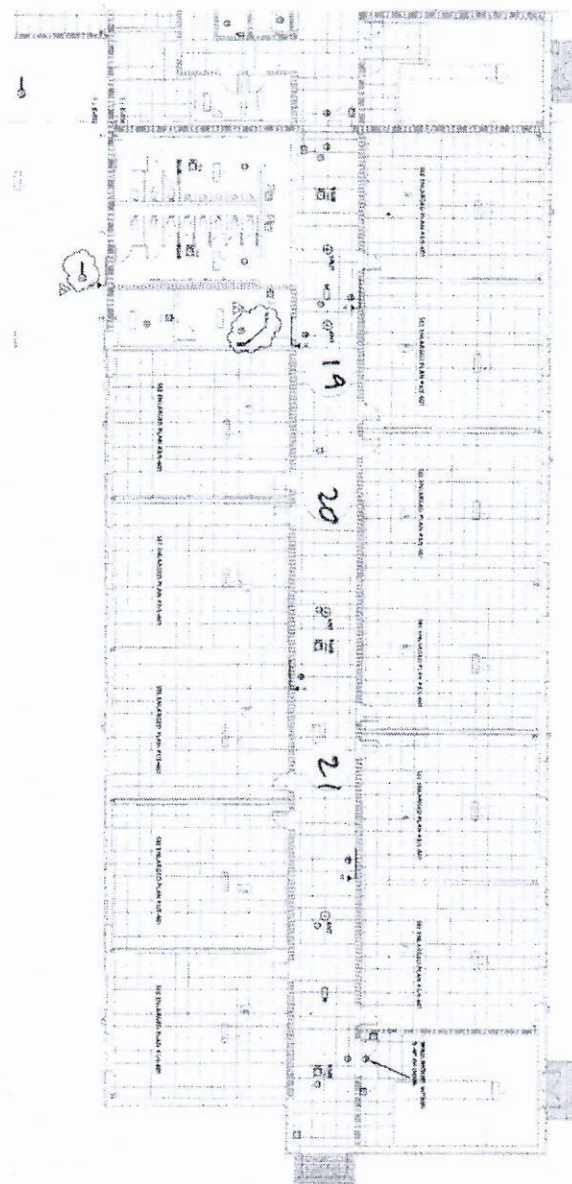
KEYPLAN



FIRST FLOOR
PLAN - BLDG B
- SPECIAL
SYSTEMS

E-304

1 FIRST FLOOR RCP - SPECIAL SYSTEMS - BLDG C



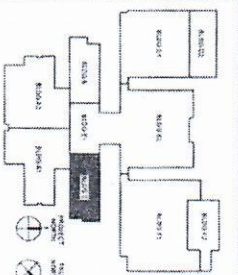
GENERAL NOTES - SPECIAL SYSTEMS

1. CONSULT WITH THE ARCHITECT FOR ALL SPECIAL SYSTEMS. THE ARCHITECT SHALL PROVIDE THE LOCATION AND SIZE OF ALL SPECIAL SYSTEMS. THE CONTRACTOR SHALL VERIFY THE LOCATION AND SIZE OF ALL SPECIAL SYSTEMS. THE CONTRACTOR SHALL VERIFY THE LOCATION AND SIZE OF ALL SPECIAL SYSTEMS.

PARTITION LEGEND

2. ALL PARTITIONS SHALL BE CONSTRUCTED IN ACCORDANCE WITH THE ARCHITECT'S REQUIREMENTS. THE CONTRACTOR SHALL VERIFY THE LOCATION AND SIZE OF ALL PARTITIONS. THE CONTRACTOR SHALL VERIFY THE LOCATION AND SIZE OF ALL PARTITIONS.

KEYPLAN



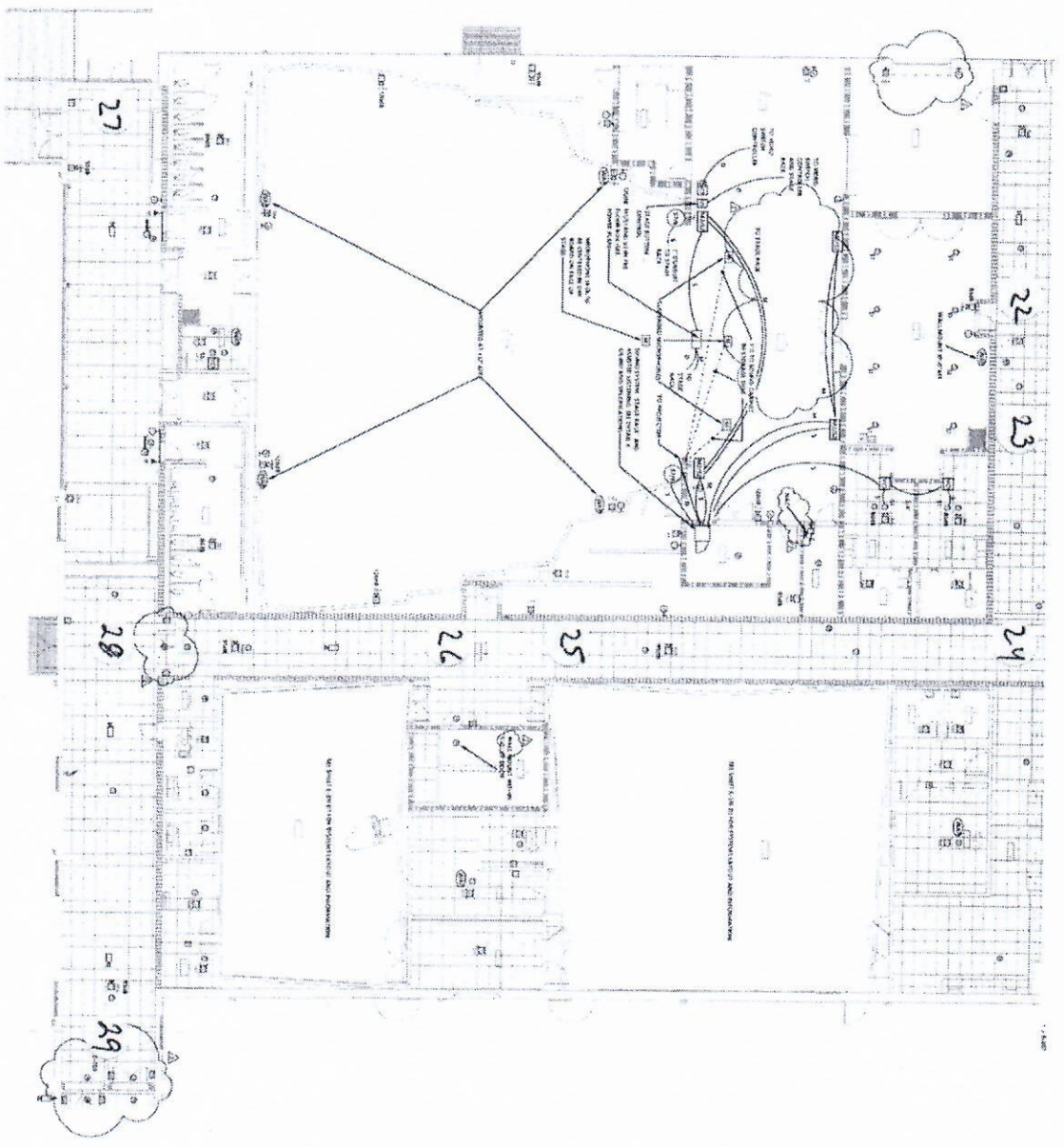
WEST RIDGE HIGH SCHOOL



PROJECT: WEST RIDGE HIGH SCHOOL
 DATE: 10/20/2023
 DRAWING NO: E-305

FIRST FLOOR PARTITION LEGEND SYSTEMS E-305

1 FIRST FLOOR RCP - SPECIAL SYSTEMS - BLDG D1



GENERAL NOTES - CONTINUED

1. CONTRACTOR SHALL VERIFY ALL FIELD CONDITIONS AND REPORT ANY DISCREPANCIES TO THE ARCHITECT IMMEDIATELY. THE CONTRACTOR SHALL BE RESPONSIBLE FOR OBTAINING ALL NECESSARY PERMITS AND APPROVALS FROM THE LOCAL, STATE, AND FEDERAL AUTHORITIES. THE CONTRACTOR SHALL BE RESPONSIBLE FOR OBTAINING ALL NECESSARY PERMITS AND APPROVALS FROM THE LOCAL, STATE, AND FEDERAL AUTHORITIES.



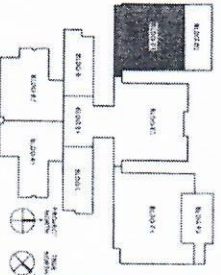
PARTITION LEGEND

1. ALL PARTITIONS SHALL BE CONSTRUCTED IN ACCORDANCE WITH THE 2010 INTERNATIONAL BUILDING CODE (IBC) AND THE 2010 INTERNATIONAL MECHANICAL AND ELECTRICAL PLUMBING CODE (IMC).

2. PARTITIONS SHALL BE CONSTRUCTED TO RESIST A MINIMUM OF 100 PSF OF UNIFORM LOADS AND 15 PSF OF POINT LOADS.

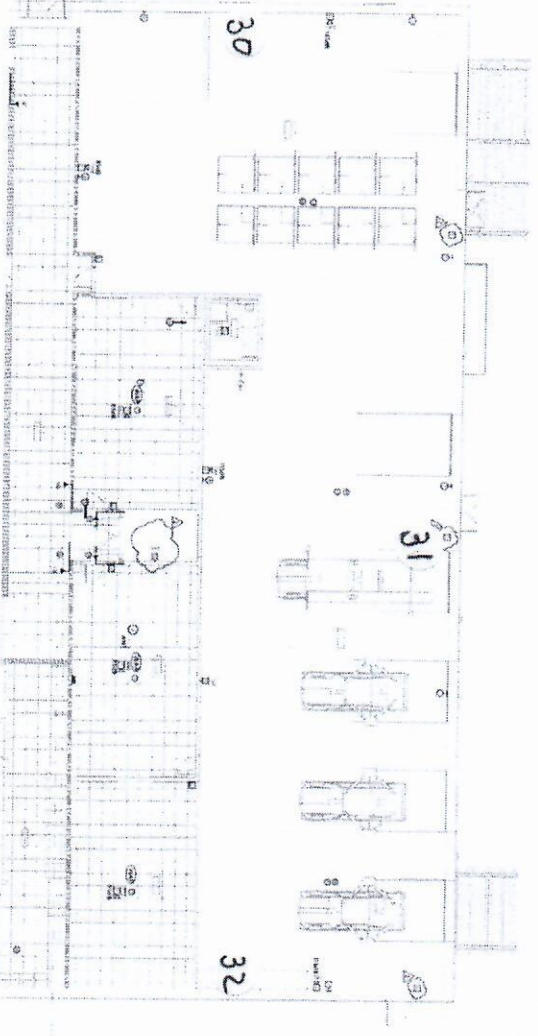
3. PARTITIONS SHALL BE CONSTRUCTED TO RESIST A MINIMUM OF 100 PSF OF UNIFORM LOADS AND 15 PSF OF POINT LOADS.

KEYPLAN



FIRST FLOOR PLAN - BLDG D1 - SPECIAL SYSTEMS

E-306



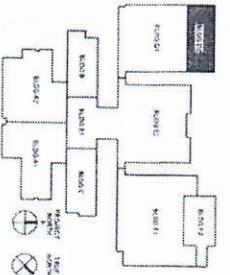
1 FIRST FLOOR RCP - SPECIAL SYSTEMS - BLDG D2

GENERAL NOTES - SYSTEMS

1. CONSULT WITH ARCHITECT FOR ALL SPECIAL SYSTEMS AND ALL SYSTEMS TO BE INSTALLED IN THIS PROJECT. THE CONTRACTOR SHALL BE RESPONSIBLE FOR OBTAINING ALL NECESSARY PERMITS AND APPROVALS FROM THE LOCAL, STATE, AND FEDERAL AUTHORITIES. THE CONTRACTOR SHALL BE RESPONSIBLE FOR OBTAINING ALL NECESSARY PERMITS AND APPROVALS FROM THE LOCAL, STATE, AND FEDERAL AUTHORITIES. THE CONTRACTOR SHALL BE RESPONSIBLE FOR OBTAINING ALL NECESSARY PERMITS AND APPROVALS FROM THE LOCAL, STATE, AND FEDERAL AUTHORITIES.

PARTITION LEGEND

1. ALL PARTITIONS SHALL BE CONSTRUCTED IN ACCORDANCE WITH THE ARCHITECT'S REQUIREMENTS AND THE LOCAL, STATE, AND FEDERAL CODES. THE CONTRACTOR SHALL BE RESPONSIBLE FOR OBTAINING ALL NECESSARY PERMITS AND APPROVALS FROM THE LOCAL, STATE, AND FEDERAL AUTHORITIES. THE CONTRACTOR SHALL BE RESPONSIBLE FOR OBTAINING ALL NECESSARY PERMITS AND APPROVALS FROM THE LOCAL, STATE, AND FEDERAL AUTHORITIES.



SELLING COUNTY
SCHOOL

Gain Bath West
ARCHITECTS

LSP

optima
CONSULTING

Professional Engineer Seal

PROJECT: WEST RIDGE HIGH SCHOOL

DATE: 10/20/2023

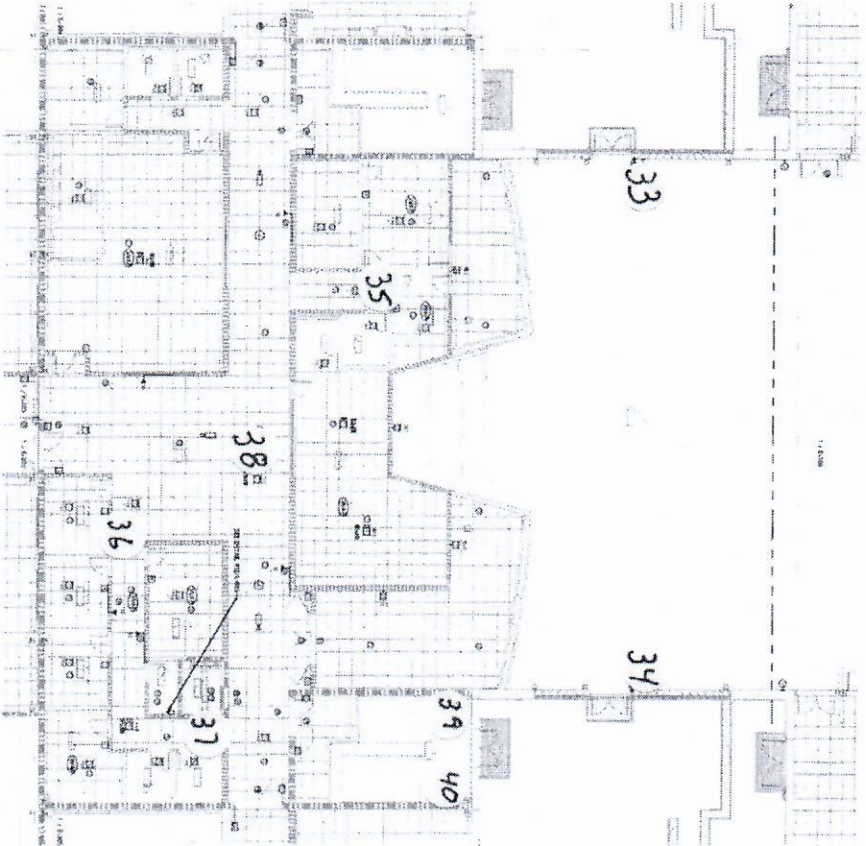
DRAWN BY: [Name]

CHECKED BY: [Name]

FIRST FLOOR PLAN - BLDG D2 - SPECIAL SYSTEMS

E-307

1 FIRST FLOOR RCP - SPECIAL SYSTEMS - BLDG E1



GENERAL NOTES:
 1. CONSULT WITH ARCHITECT FOR ALL SPECIAL SYSTEMS AND MATERIALS.
 2. ALL SPECIAL SYSTEMS SHALL BE INSTALLED IN ACCORDANCE WITH THE MANUFACTURER'S INSTALLATION INSTRUCTIONS.
 3. ALL SPECIAL SYSTEMS SHALL BE INSTALLED IN ACCORDANCE WITH THE MANUFACTURER'S INSTALLATION INSTRUCTIONS.
 4. ALL SPECIAL SYSTEMS SHALL BE INSTALLED IN ACCORDANCE WITH THE MANUFACTURER'S INSTALLATION INSTRUCTIONS.



WEST RIDGE HIGH SCHOOL



LS3P

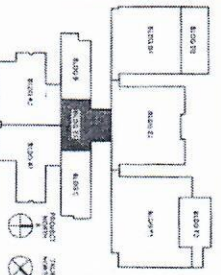


DATE: 08/20/2018
 TIME: 10:00 AM
 CHECKED BY: [Signature]

PARTITION LEGEND

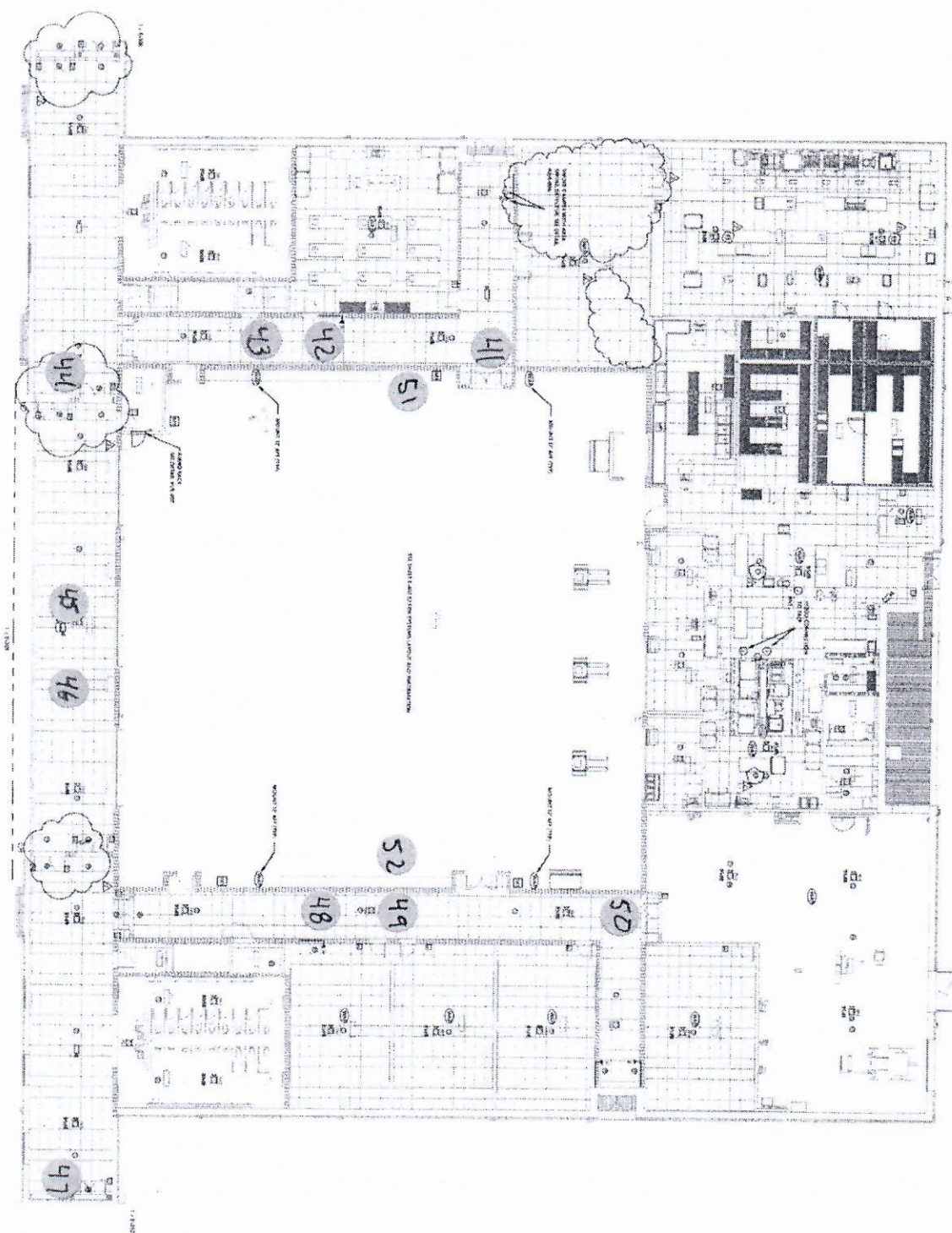
1. ALL PARTITIONS SHALL BE INSTALLED IN ACCORDANCE WITH THE MANUFACTURER'S INSTALLATION INSTRUCTIONS.
 2. ALL PARTITIONS SHALL BE INSTALLED IN ACCORDANCE WITH THE MANUFACTURER'S INSTALLATION INSTRUCTIONS.
 3. ALL PARTITIONS SHALL BE INSTALLED IN ACCORDANCE WITH THE MANUFACTURER'S INSTALLATION INSTRUCTIONS.

KEY PLAN



FIRST FLOOR
 PLAN AND
 SPECIAL
 SYSTEMS
 E-308

1 FIRST FLOOR RCP - SPECIAL SYSTEMS - BLDG E2



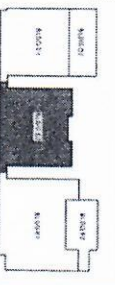
GENERAL NOTES, SYSTEMS

1. CONSULT THE MECHANICAL, ELECTRICAL, AND PLUMBING ENGINEERS FOR THE MECHANICAL, ELECTRICAL, AND PLUMBING SYSTEMS. THE MECHANICAL ENGINEER SHALL PROVIDE THE MECHANICAL SYSTEMS. THE ELECTRICAL ENGINEER SHALL PROVIDE THE ELECTRICAL SYSTEMS. THE PLUMBING ENGINEER SHALL PROVIDE THE PLUMBING SYSTEMS. THE MECHANICAL, ELECTRICAL, AND PLUMBING ENGINEERS SHALL BE RESPONSIBLE FOR THE DESIGN AND CONSTRUCTION OF THE MECHANICAL, ELECTRICAL, AND PLUMBING SYSTEMS. THE ARCHITECT SHALL BE RESPONSIBLE FOR THE DESIGN AND CONSTRUCTION OF THE BUILDING STRUCTURE AND INTERIOR FINISHES. THE ARCHITECT SHALL BE RESPONSIBLE FOR THE COORDINATION OF THE MECHANICAL, ELECTRICAL, AND PLUMBING SYSTEMS WITH THE BUILDING STRUCTURE AND INTERIOR FINISHES.

PARTITION LEGEND

1. ALL PARTITIONS SHALL BE CONSTRUCTED IN ACCORDANCE WITH THE REQUIREMENTS OF THE INTERNATIONAL BUILDING CODE (IBC) AND THE INTERNATIONAL MECHANICAL AND ELECTRICAL CODE (IMC).
 2. PARTITIONS SHALL BE CONSTRUCTED WITH A MINIMUM RATED SOUND TRANSMISSION COEFFICIENT (STC) OF 45.
 3. PARTITIONS SHALL BE CONSTRUCTED WITH A MINIMUM RATED FIRE RESISTANCE OF 1 HOUR.
 4. PARTITIONS SHALL BE CONSTRUCTED WITH A MINIMUM RATED SOUND TRANSMISSION COEFFICIENT (STC) OF 45.
 5. PARTITIONS SHALL BE CONSTRUCTED WITH A MINIMUM RATED FIRE RESISTANCE OF 1 HOUR.

KEYPLAN



MULLEN GROUP

WEST RIDGE HIGH SCHOOL

Cain Rash West

LSP

optima engineering

PROFESSIONAL ENGINEER

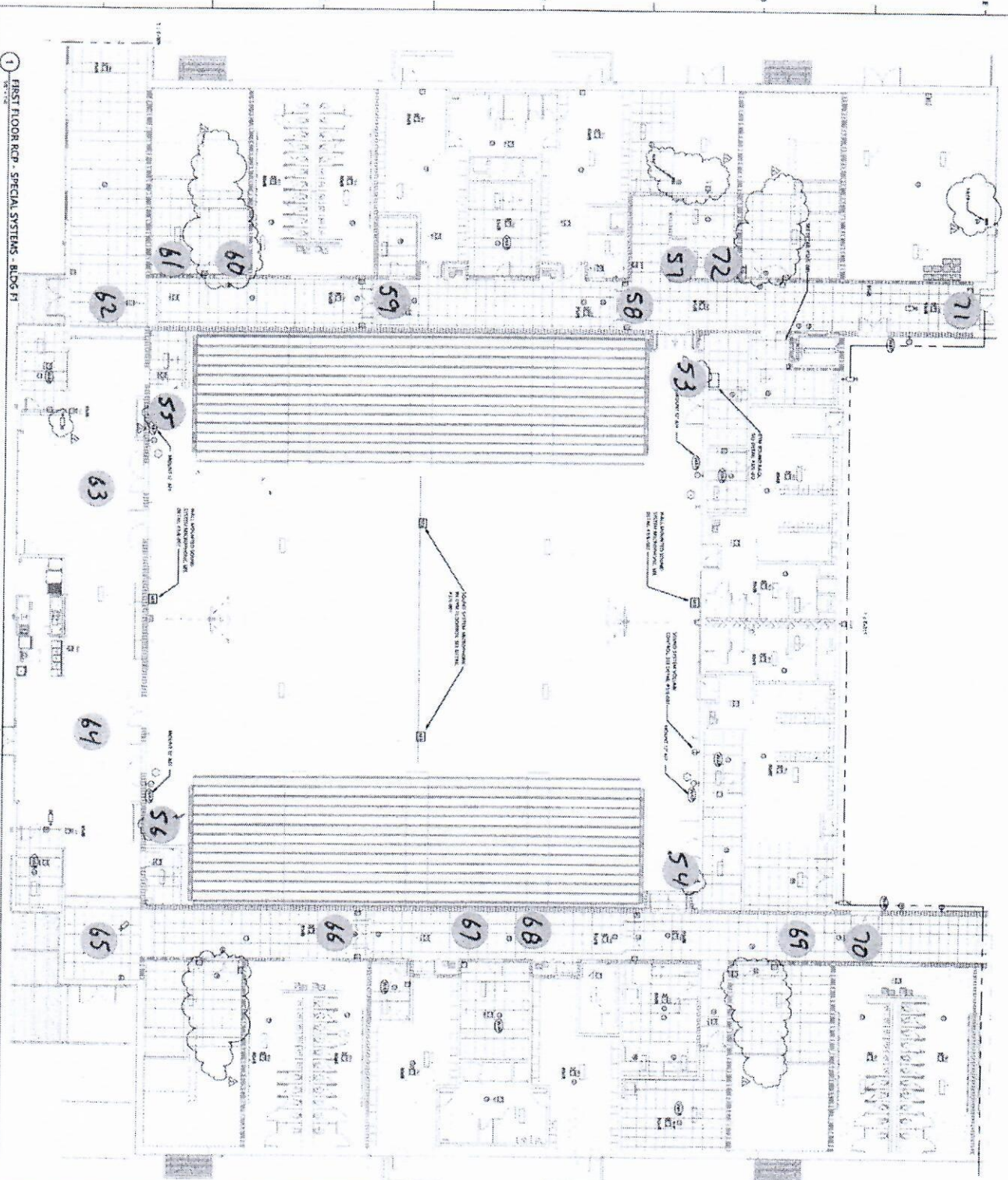
PROJECT: WEST RIDGE HIGH SCHOOL

DATE: 08/15/2018

DESIGNED BY: [Name]

FIRST FLOOR PLAN - BLDG E2 - SPECIAL SYSTEMS

E-309



1 FIRST FLOOR RCP - SPECIAL SYSTEMS - BLDG F1

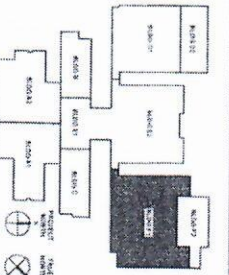
GENERAL NOTES:
 1. CONSULT WITH ARCHITECT FOR ALL INFORMATION AND AS-BUILT DATA.
 2. ALL WORK SHALL BE IN ACCORDANCE WITH THE LATEST EDITIONS OF THE IBC AND ALL APPLICABLE CODES.
 3. ALL WORK SHALL BE IN ACCORDANCE WITH THE LATEST EDITIONS OF THE IBC AND ALL APPLICABLE CODES.
 4. ALL WORK SHALL BE IN ACCORDANCE WITH THE LATEST EDITIONS OF THE IBC AND ALL APPLICABLE CODES.

REVISIONS:

PARTITION LEGEND

1. ALL PARTITIONS SHALL BE CONSTRUCTED IN ACCORDANCE WITH THE LATEST EDITIONS OF THE IBC AND ALL APPLICABLE CODES.
 2. ALL PARTITIONS SHALL BE CONSTRUCTED IN ACCORDANCE WITH THE LATEST EDITIONS OF THE IBC AND ALL APPLICABLE CODES.
 3. ALL PARTITIONS SHALL BE CONSTRUCTED IN ACCORDANCE WITH THE LATEST EDITIONS OF THE IBC AND ALL APPLICABLE CODES.

KEYPLAN



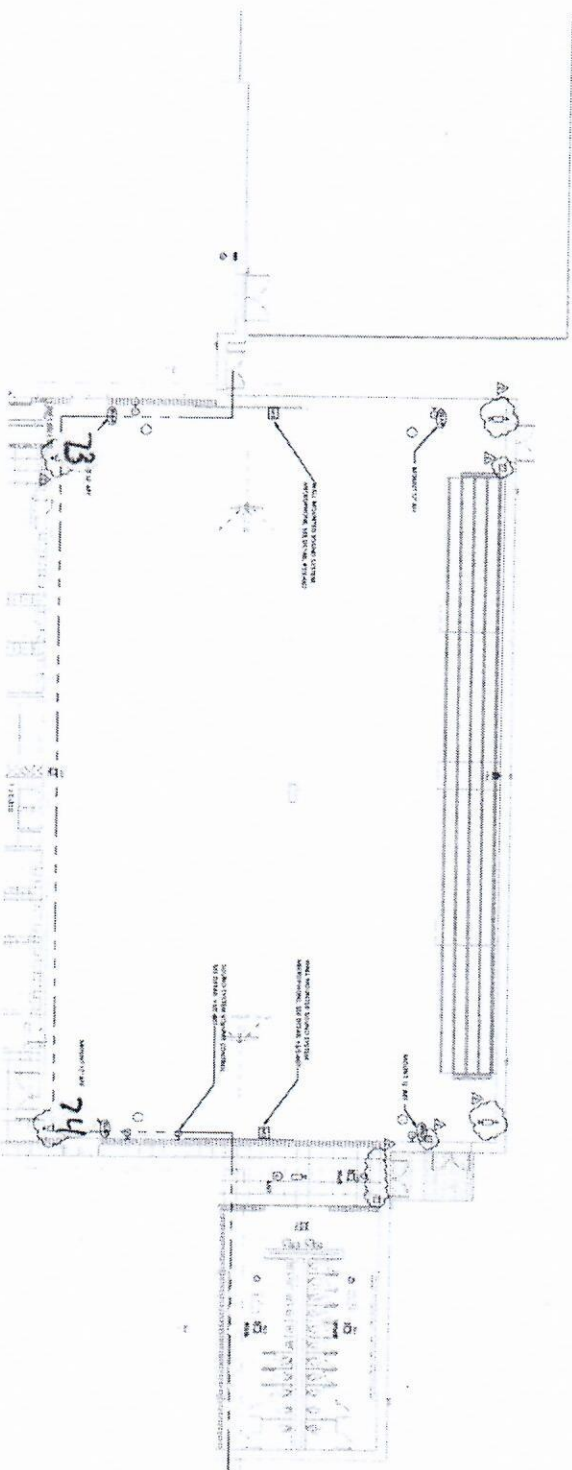
FIRST FLOOR RCP - SPECIAL SYSTEMS - BLDG F1
 PLAN - BLDG F1 - SPECIAL SYSTEMS
 E-310



WEST RIDGE HIGH SCHOOL



DATE: 08/20/2018
 DRAWN BY: [Name]
 CHECKED BY: [Name]
 PROJECT: WEST RIDGE HIGH SCHOOL



1 FIRST FLOOR RCP - SPECIAL SYSTEMS - BLDG F2

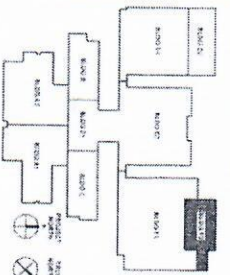
GENERAL NOTES: SEE OTHER SHEETS
 1. CONTRACTOR SHALL VERIFY ALL DIMENSIONS AND LOCATIONS OF ALL SPECIAL SYSTEMS AND EQUIPMENT SHALL BE CORRECTLY LOCATED AND INSTALLED IN ACCORDANCE WITH THE CONTRACT DOCUMENTS AND ALL APPLICABLE CODES AND REGULATIONS. THE CONTRACTOR SHALL BE RESPONSIBLE FOR OBTAINING ALL NECESSARY PERMITS AND APPROVALS FROM THE APPROPRIATE AGENCIES. THE CONTRACTOR SHALL BE RESPONSIBLE FOR OBTAINING ALL NECESSARY PERMITS AND APPROVALS FROM THE APPROPRIATE AGENCIES. THE CONTRACTOR SHALL BE RESPONSIBLE FOR OBTAINING ALL NECESSARY PERMITS AND APPROVALS FROM THE APPROPRIATE AGENCIES.

SEE OTHER SHEETS FOR
 1. SPECIAL SYSTEMS
 2. SPECIAL SYSTEMS

PARTITION LEGEND

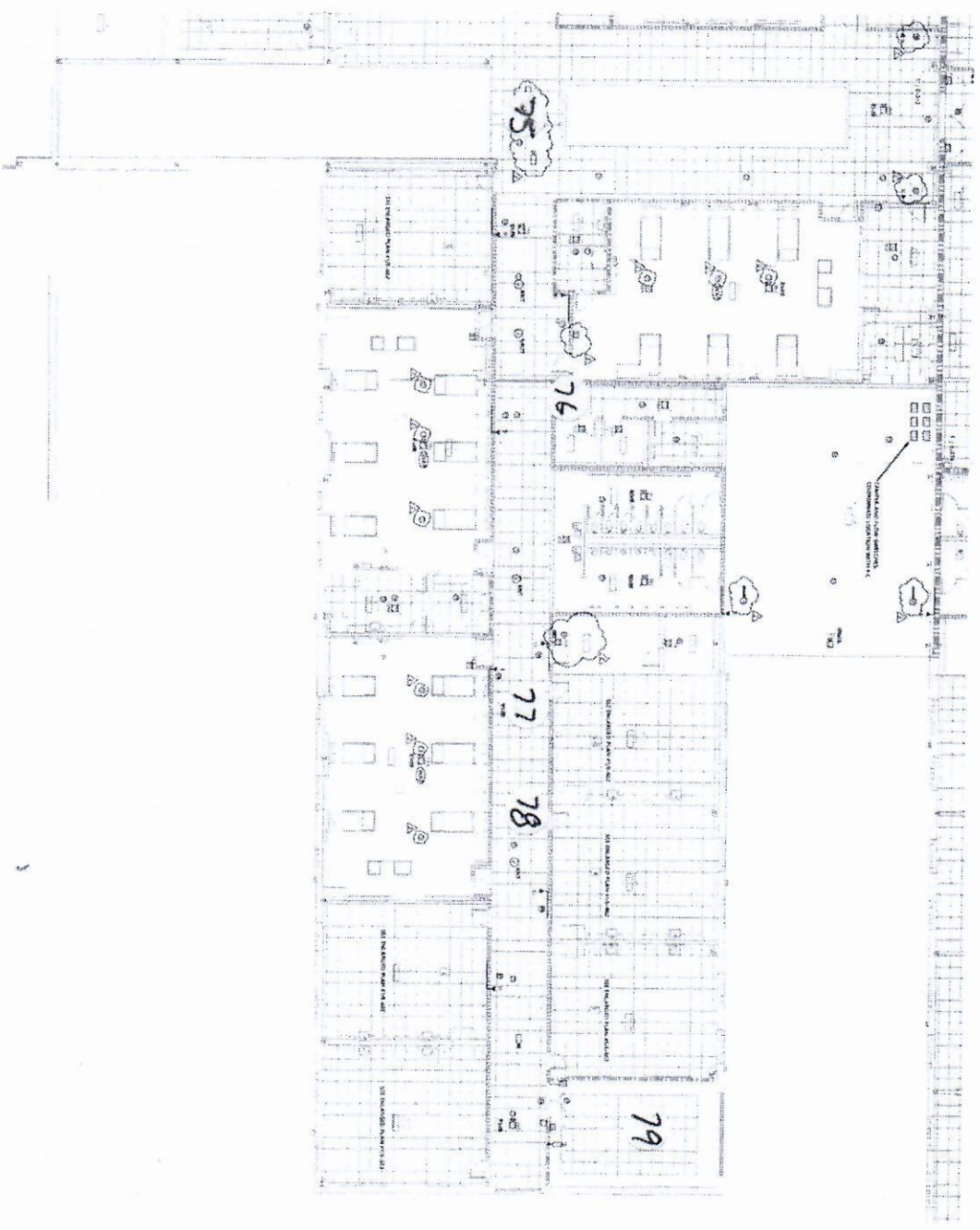
1. ALL PARTITIONS SHALL BE CONSTRUCTED IN ACCORDANCE WITH THE CONTRACT DOCUMENTS AND ALL APPLICABLE CODES AND REGULATIONS. THE CONTRACTOR SHALL BE RESPONSIBLE FOR OBTAINING ALL NECESSARY PERMITS AND APPROVALS FROM THE APPROPRIATE AGENCIES. THE CONTRACTOR SHALL BE RESPONSIBLE FOR OBTAINING ALL NECESSARY PERMITS AND APPROVALS FROM THE APPROPRIATE AGENCIES. THE CONTRACTOR SHALL BE RESPONSIBLE FOR OBTAINING ALL NECESSARY PERMITS AND APPROVALS FROM THE APPROPRIATE AGENCIES.

KEYPLAN



APPROVED:
 PROJECT: WEST RIDGE HIGH SCHOOL
 DATE: 10/15/2024
 DRAWN BY: [Name]
 CHECKED BY: [Name]

1 SECOND FLOOR RCP - SPECIAL SYSTEMS - BLDG A1



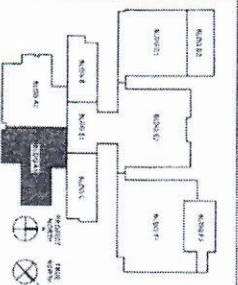
GENERAL NOTES - SYSTEMS

1. CONSULT THE ARCHITECT FOR ALL INFORMATION REGARDING THE LOCATION AND SCOPE OF THE SPECIAL SYSTEMS. THE ARCHITECT SHALL BE RESPONSIBLE FOR THE LOCATION AND SCOPE OF THE SPECIAL SYSTEMS. THE ARCHITECT SHALL BE RESPONSIBLE FOR THE LOCATION AND SCOPE OF THE SPECIAL SYSTEMS.

PARTITION LEGEND

1. 1/2" Gypsum Board on Steel Stud
 2. 5/8" Gypsum Board on Steel Stud
 3. 1/2" Gypsum Board on Steel Stud
 4. 5/8" Gypsum Board on Steel Stud
 5. 1/2" Gypsum Board on Steel Stud
 6. 5/8" Gypsum Board on Steel Stud
 7. 1/2" Gypsum Board on Steel Stud
 8. 5/8" Gypsum Board on Steel Stud
 9. 1/2" Gypsum Board on Steel Stud
 10. 5/8" Gypsum Board on Steel Stud
 11. 1/2" Gypsum Board on Steel Stud
 12. 5/8" Gypsum Board on Steel Stud
 13. 1/2" Gypsum Board on Steel Stud
 14. 5/8" Gypsum Board on Steel Stud
 15. 1/2" Gypsum Board on Steel Stud
 16. 5/8" Gypsum Board on Steel Stud
 17. 1/2" Gypsum Board on Steel Stud
 18. 5/8" Gypsum Board on Steel Stud
 19. 1/2" Gypsum Board on Steel Stud
 20. 5/8" Gypsum Board on Steel Stud
 21. 1/2" Gypsum Board on Steel Stud
 22. 5/8" Gypsum Board on Steel Stud
 23. 1/2" Gypsum Board on Steel Stud
 24. 5/8" Gypsum Board on Steel Stud
 25. 1/2" Gypsum Board on Steel Stud
 26. 5/8" Gypsum Board on Steel Stud
 27. 1/2" Gypsum Board on Steel Stud
 28. 5/8" Gypsum Board on Steel Stud
 29. 1/2" Gypsum Board on Steel Stud
 30. 5/8" Gypsum Board on Steel Stud
 31. 1/2" Gypsum Board on Steel Stud
 32. 5/8" Gypsum Board on Steel Stud
 33. 1/2" Gypsum Board on Steel Stud
 34. 5/8" Gypsum Board on Steel Stud
 35. 1/2" Gypsum Board on Steel Stud
 36. 5/8" Gypsum Board on Steel Stud
 37. 1/2" Gypsum Board on Steel Stud
 38. 5/8" Gypsum Board on Steel Stud
 39. 1/2" Gypsum Board on Steel Stud
 40. 5/8" Gypsum Board on Steel Stud
 41. 1/2" Gypsum Board on Steel Stud
 42. 5/8" Gypsum Board on Steel Stud
 43. 1/2" Gypsum Board on Steel Stud
 44. 5/8" Gypsum Board on Steel Stud
 45. 1/2" Gypsum Board on Steel Stud
 46. 5/8" Gypsum Board on Steel Stud
 47. 1/2" Gypsum Board on Steel Stud
 48. 5/8" Gypsum Board on Steel Stud
 49. 1/2" Gypsum Board on Steel Stud
 50. 5/8" Gypsum Board on Steel Stud
 51. 1/2" Gypsum Board on Steel Stud
 52. 5/8" Gypsum Board on Steel Stud
 53. 1/2" Gypsum Board on Steel Stud
 54. 5/8" Gypsum Board on Steel Stud
 55. 1/2" Gypsum Board on Steel Stud
 56. 5/8" Gypsum Board on Steel Stud
 57. 1/2" Gypsum Board on Steel Stud
 58. 5/8" Gypsum Board on Steel Stud
 59. 1/2" Gypsum Board on Steel Stud
 60. 5/8" Gypsum Board on Steel Stud
 61. 1/2" Gypsum Board on Steel Stud
 62. 5/8" Gypsum Board on Steel Stud
 63. 1/2" Gypsum Board on Steel Stud
 64. 5/8" Gypsum Board on Steel Stud
 65. 1/2" Gypsum Board on Steel Stud
 66. 5/8" Gypsum Board on Steel Stud
 67. 1/2" Gypsum Board on Steel Stud
 68. 5/8" Gypsum Board on Steel Stud
 69. 1/2" Gypsum Board on Steel Stud
 70. 5/8" Gypsum Board on Steel Stud
 71. 1/2" Gypsum Board on Steel Stud
 72. 5/8" Gypsum Board on Steel Stud
 73. 1/2" Gypsum Board on Steel Stud
 74. 5/8" Gypsum Board on Steel Stud
 75. 1/2" Gypsum Board on Steel Stud
 76. 5/8" Gypsum Board on Steel Stud
 77. 1/2" Gypsum Board on Steel Stud
 78. 5/8" Gypsum Board on Steel Stud
 79. 1/2" Gypsum Board on Steel Stud
 80. 5/8" Gypsum Board on Steel Stud
 81. 1/2" Gypsum Board on Steel Stud
 82. 5/8" Gypsum Board on Steel Stud
 83. 1/2" Gypsum Board on Steel Stud
 84. 5/8" Gypsum Board on Steel Stud
 85. 1/2" Gypsum Board on Steel Stud
 86. 5/8" Gypsum Board on Steel Stud
 87. 1/2" Gypsum Board on Steel Stud
 88. 5/8" Gypsum Board on Steel Stud
 89. 1/2" Gypsum Board on Steel Stud
 90. 5/8" Gypsum Board on Steel Stud
 91. 1/2" Gypsum Board on Steel Stud
 92. 5/8" Gypsum Board on Steel Stud
 93. 1/2" Gypsum Board on Steel Stud
 94. 5/8" Gypsum Board on Steel Stud
 95. 1/2" Gypsum Board on Steel Stud
 96. 5/8" Gypsum Board on Steel Stud
 97. 1/2" Gypsum Board on Steel Stud
 98. 5/8" Gypsum Board on Steel Stud
 99. 1/2" Gypsum Board on Steel Stud
 100. 5/8" Gypsum Board on Steel Stud

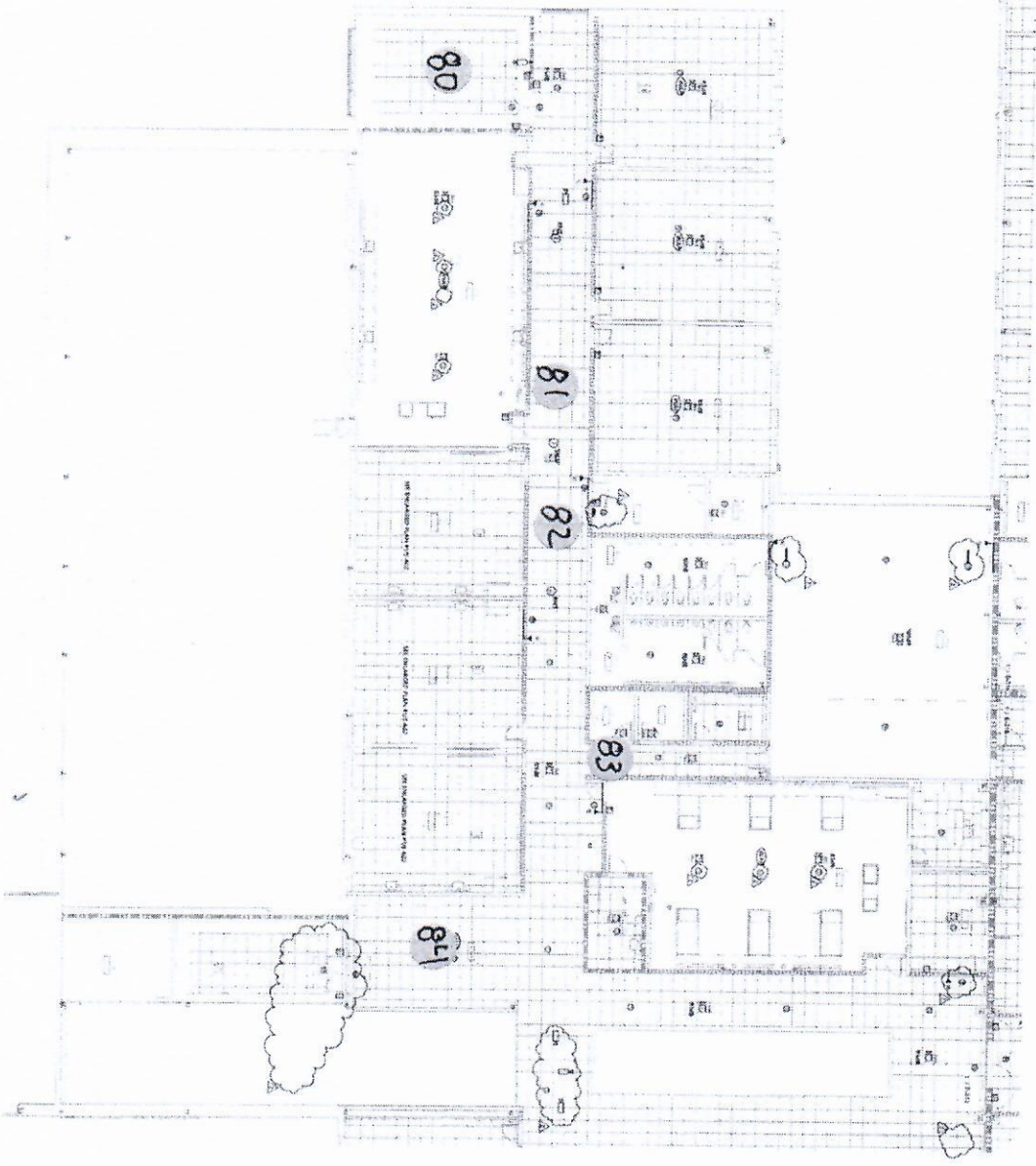
KEYPLAN



PROJECT: WEST RIDGE HIGH SCHOOL
 DATE: 08/20/2018
 DRAWING NO: 2018-08-20-001

SECOND FLOOR PLAN - BLDG A1 - SPECIAL SYSTEMS
 E-312

1 SECOND FLOOR ACADEMIC - SPECIAL SYSTEMS - BLDG A2



GENERAL NOTES, SYSTEMS

1. CONSULTING SHALL PROVIDE ALL LITERATURE AND SYSTEM SCHEDULES FOR THE SPECIAL SYSTEMS. CONSULTING SHALL PROVIDE ALL LITERATURE AND SYSTEM SCHEDULES FOR THE SPECIAL SYSTEMS. CONSULTING SHALL PROVIDE ALL LITERATURE AND SYSTEM SCHEDULES FOR THE SPECIAL SYSTEMS.

SULLIVAN CORP
WEST RIDGE HIGH SCHOOL

Cain
Rash
West
ASSOCIATES

LSJP

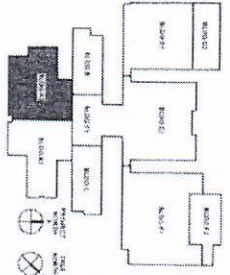
optima
engineering



PARTITION LEGEND

NO.	DESCRIPTION
1	1/2" Gypsum Board
2	5/8" Gypsum Board
3	1" Gypsum Board
4	1 1/2" Gypsum Board
5	2" Gypsum Board
6	2 1/2" Gypsum Board
7	3" Gypsum Board
8	3 1/2" Gypsum Board
9	4" Gypsum Board
10	4 1/2" Gypsum Board
11	5" Gypsum Board
12	5 1/2" Gypsum Board
13	6" Gypsum Board
14	6 1/2" Gypsum Board
15	7" Gypsum Board
16	7 1/2" Gypsum Board
17	8" Gypsum Board
18	8 1/2" Gypsum Board
19	9" Gypsum Board
20	9 1/2" Gypsum Board
21	10" Gypsum Board
22	10 1/2" Gypsum Board
23	11" Gypsum Board
24	11 1/2" Gypsum Board
25	12" Gypsum Board

KEYPLAN



SECOND FLOOR PLAN - BLDG A2 - SPECIAL SYSTEMS E-313

GENERAL NOTES:
 1. CONSULTATION SHALL BE PROVIDED AS A PART OF THE CONTRACTING. THE CONTRACTOR SHALL BE RESPONSIBLE FOR OBTAINING ALL NECESSARY PERMITS AND APPROVALS FROM THE LOCAL, STATE AND FEDERAL AGENCIES. THE CONTRACTOR SHALL BE RESPONSIBLE FOR OBTAINING ALL NECESSARY PERMITS AND APPROVALS FROM THE LOCAL, STATE AND FEDERAL AGENCIES. THE CONTRACTOR SHALL BE RESPONSIBLE FOR OBTAINING ALL NECESSARY PERMITS AND APPROVALS FROM THE LOCAL, STATE AND FEDERAL AGENCIES.



NO.	DATE	DESCRIPTION
1	10/15/2018	ISSUED FOR PERMITTING
2	11/01/2018	ISSUED FOR CONSTRUCTION

PROJECT: WEST RIDGE HIGH SCHOOL
 DATE: 10/15/2018
 DRAWING NO.: E-314

SECOND FLOOR PLAN - BLDG B - SPECIAL SYSTEMS
 E-314



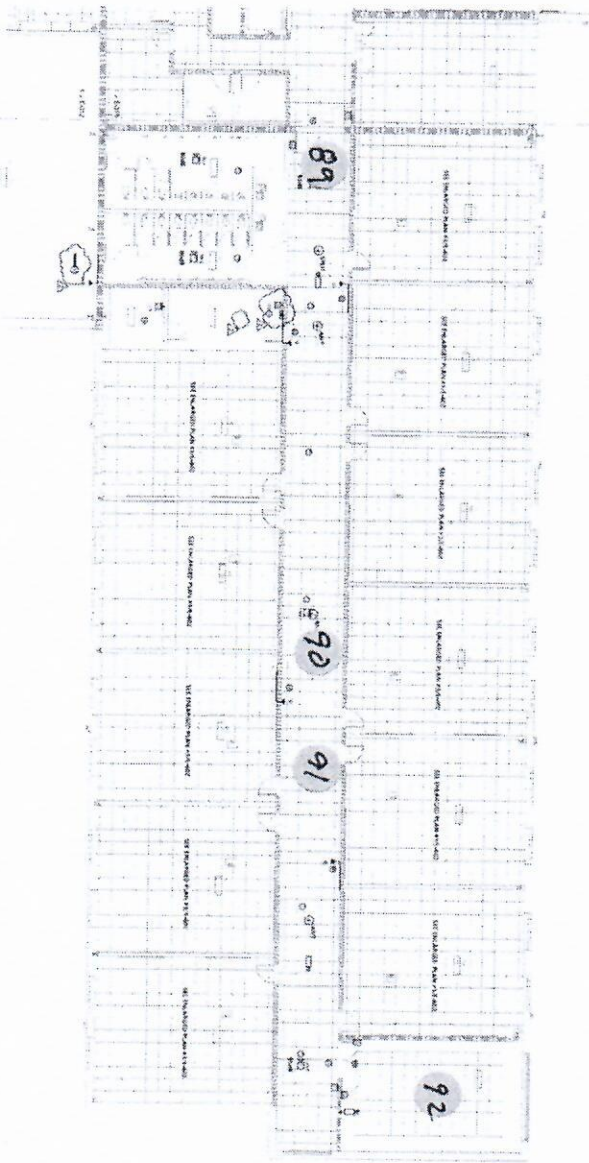
1 SECOND FLOOR ACADEMIC - SPECIAL SYSTEMS - BLDG B

PARTITION LEGEND

1. 1/2" GYP BOARD ON 2" X 4" STUDS
 2. 5/8" GYP BOARD ON 2" X 4" STUDS
 3. 1" GYP BOARD ON 2" X 4" STUDS
 4. 1 1/2" GYP BOARD ON 2" X 4" STUDS
 5. 2" GYP BOARD ON 2" X 4" STUDS
 6. 2 1/2" GYP BOARD ON 2" X 4" STUDS
 7. 3" GYP BOARD ON 2" X 4" STUDS
 8. 3 1/2" GYP BOARD ON 2" X 4" STUDS
 9. 4" GYP BOARD ON 2" X 4" STUDS
 10. 4 1/2" GYP BOARD ON 2" X 4" STUDS
 11. 5" GYP BOARD ON 2" X 4" STUDS
 12. 5 1/2" GYP BOARD ON 2" X 4" STUDS
 13. 6" GYP BOARD ON 2" X 4" STUDS
 14. 6 1/2" GYP BOARD ON 2" X 4" STUDS
 15. 7" GYP BOARD ON 2" X 4" STUDS
 16. 7 1/2" GYP BOARD ON 2" X 4" STUDS
 17. 8" GYP BOARD ON 2" X 4" STUDS
 18. 8 1/2" GYP BOARD ON 2" X 4" STUDS
 19. 9" GYP BOARD ON 2" X 4" STUDS
 20. 9 1/2" GYP BOARD ON 2" X 4" STUDS
 21. 10" GYP BOARD ON 2" X 4" STUDS
 22. 10 1/2" GYP BOARD ON 2" X 4" STUDS
 23. 11" GYP BOARD ON 2" X 4" STUDS
 24. 11 1/2" GYP BOARD ON 2" X 4" STUDS
 25. 12" GYP BOARD ON 2" X 4" STUDS



1 2ND FLOOR ACADEMIC - SPECIAL SYSTEMS - BLDG C



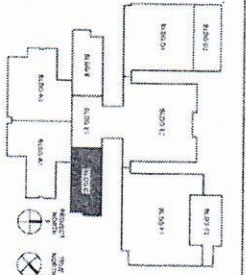
GENERAL NOTES - SYSTEMS

1. CONSULT WITH ARCHITECT & ALL APPLICABLE CODES FOR ALL SYSTEMS. VERIFY ALL SYSTEMS WITH ARCHITECT & ALL APPLICABLE CODES. VERIFY ALL SYSTEMS WITH ARCHITECT & ALL APPLICABLE CODES. VERIFY ALL SYSTEMS WITH ARCHITECT & ALL APPLICABLE CODES.

PARTITION LEGEND

1. PARTITION SYSTEMS SHALL BE AS SHOWN ON THIS PLAN. VERIFY ALL SYSTEMS WITH ARCHITECT & ALL APPLICABLE CODES. VERIFY ALL SYSTEMS WITH ARCHITECT & ALL APPLICABLE CODES. VERIFY ALL SYSTEMS WITH ARCHITECT & ALL APPLICABLE CODES.

KEYPLAN

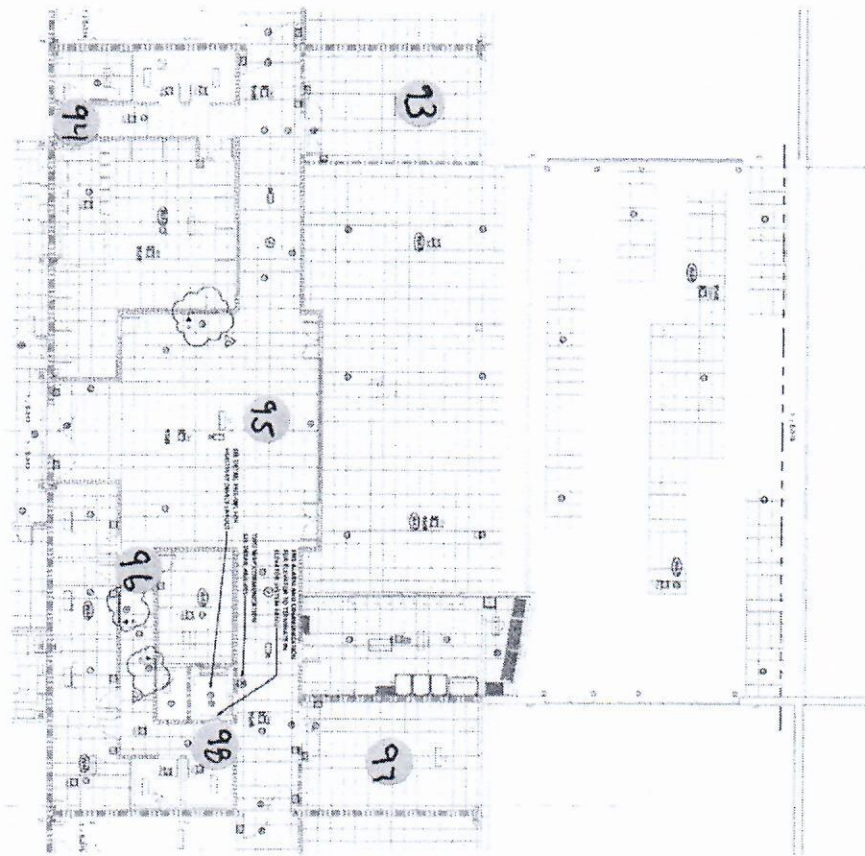


CONTRACTOR: [Name]

PROJECT: [Name]
 DATE: [Date]
 DRAWING NO.: [Number]
 SHEET NO.: [Number]

SECOND FLOOR PLAN - BLDG C - SPECIAL SYSTEMS E-315

1 SECOND FLOOR RCP - SPECIAL SYSTEMS - BLDG E1

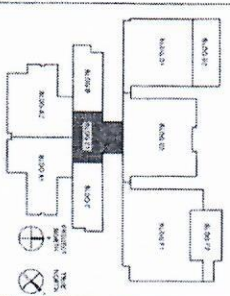


GENERAL NOTES - SYSTEMS

1. GENERAL CONTRACTOR SHALL PROVIDE ALL MATERIALS AND LABOR FOR THE INSTALLATION OF ALL SPECIAL SYSTEMS. ALL MATERIALS SHALL BE APPROVED BY THE ARCHITECT AND THE ENGINEER PRIOR TO INSTALLATION. ALL MATERIALS SHALL BE INSTALLED IN ACCORDANCE WITH THE MANUFACTURER'S INSTRUCTIONS AND THE REQUIREMENTS OF THE DESIGN DOCUMENTS.

PARTITION LEGEND

1/2" Gypsum Board	1/2" Gypsum Board
5/8" Gypsum Board	5/8" Gypsum Board
1" Gypsum Board	1" Gypsum Board
1 1/2" Gypsum Board	1 1/2" Gypsum Board
2" Gypsum Board	2" Gypsum Board
2 1/2" Gypsum Board	2 1/2" Gypsum Board
3" Gypsum Board	3" Gypsum Board
4" Gypsum Board	4" Gypsum Board
5" Gypsum Board	5" Gypsum Board
6" Gypsum Board	6" Gypsum Board
8" Gypsum Board	8" Gypsum Board
10" Gypsum Board	10" Gypsum Board



SHILPAC CORP

WEST RIDGE HIGH SCHOOL

Cain West

ARCHITECT

LSP

optima

engineering



PROJECT: WEST RIDGE HIGH SCHOOL

DATE: 08/14/18

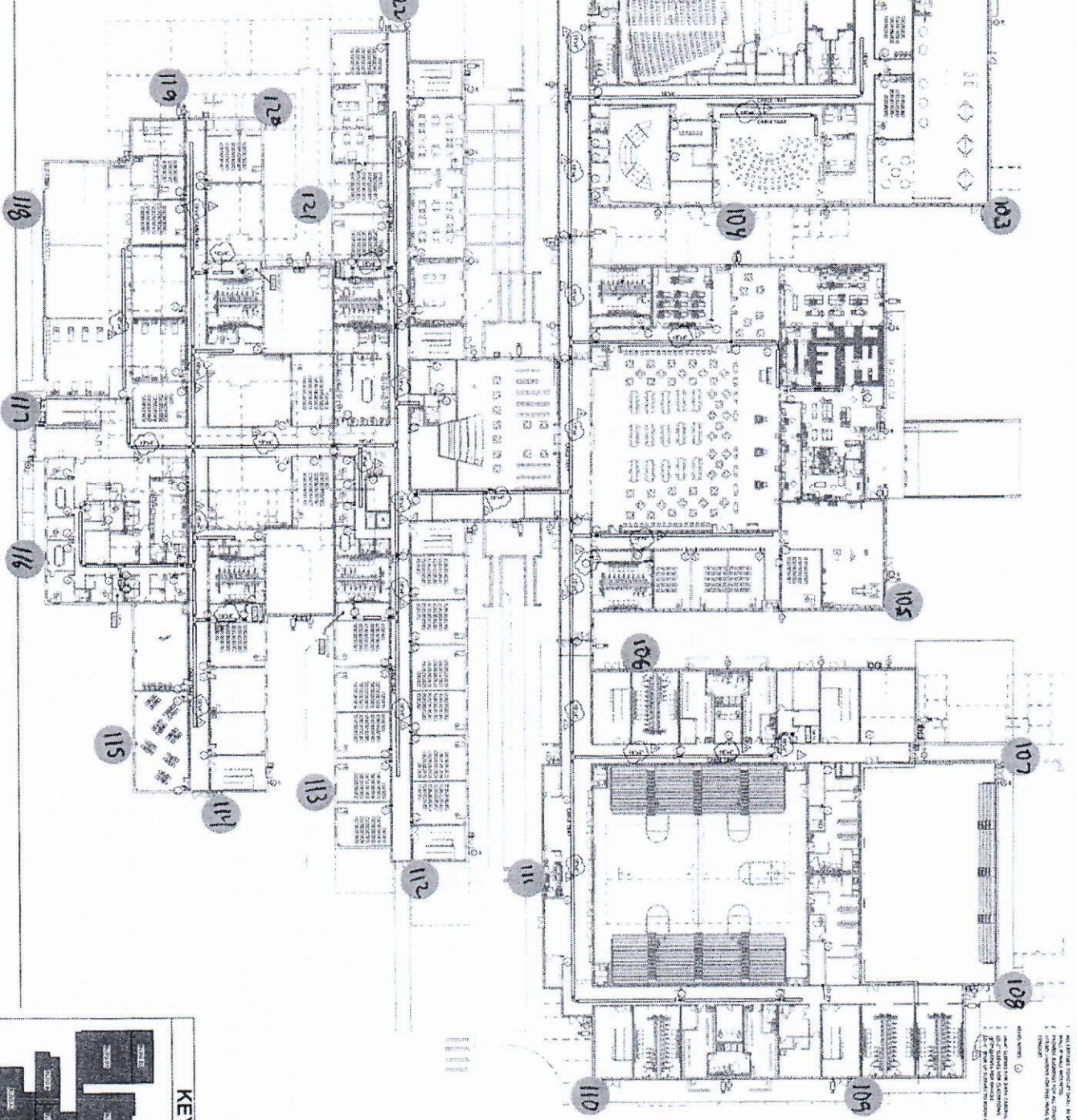
DESIGNED BY: [Name]

CHECKED BY: [Name]

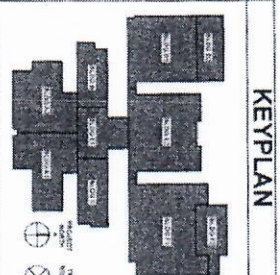
SECOND FLOOR PLAN - BLDG E1 - SPECIAL SYSTEMS

E-318

1 1ST FLOOR OVERALL SYSTEMS



- GENERAL NOTES:**
1. ALL GENERAL SYMBOLS SHALL BE SET AND NUMBERED TO MATCH GENERAL PLAN.
 2. ALL GENERAL SYMBOLS SHALL BE SET AND NUMBERED TO MATCH GENERAL PLAN.
 3. ALL GENERAL SYMBOLS SHALL BE SET AND NUMBERED TO MATCH GENERAL PLAN.
 4. ALL GENERAL SYMBOLS SHALL BE SET AND NUMBERED TO MATCH GENERAL PLAN.



KEYPLAN

FIRST FLOOR PLAN - OVERALL SPECIAL SYSTEMS
E-300

WEST RIDGE HIGH SCHOOL

CONSTRUCTION DOCUMENTS

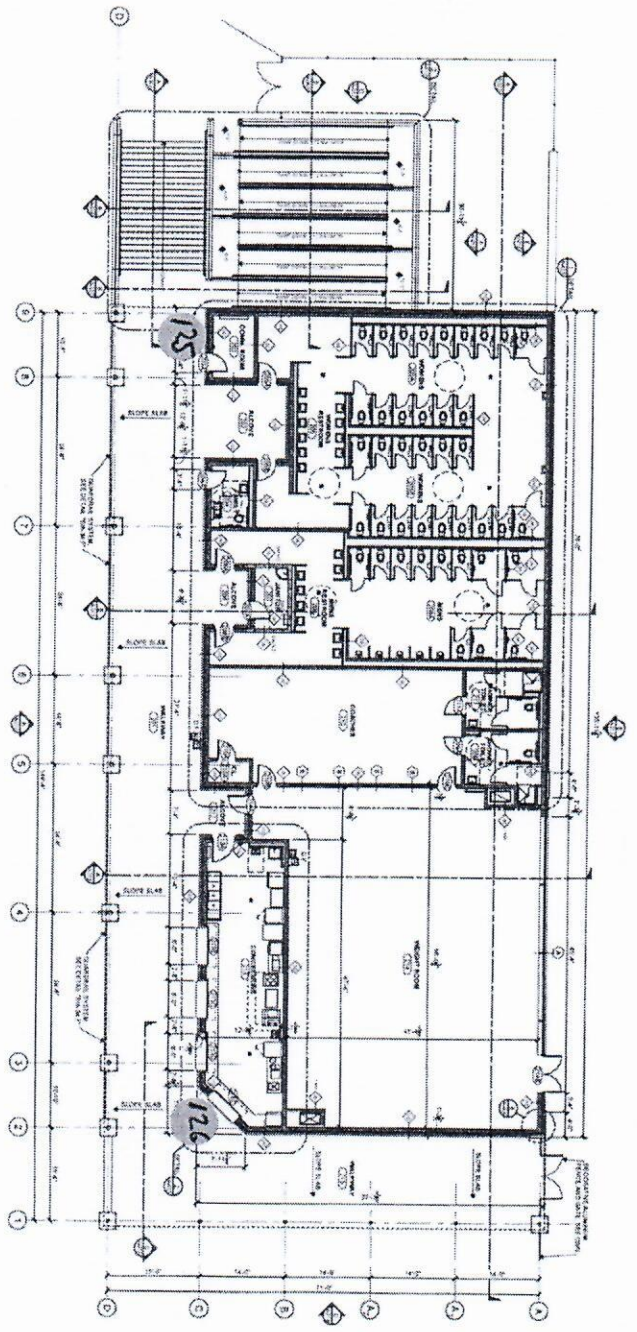
Calin
Rashi
WASH
ARCHITECTS

LSJP

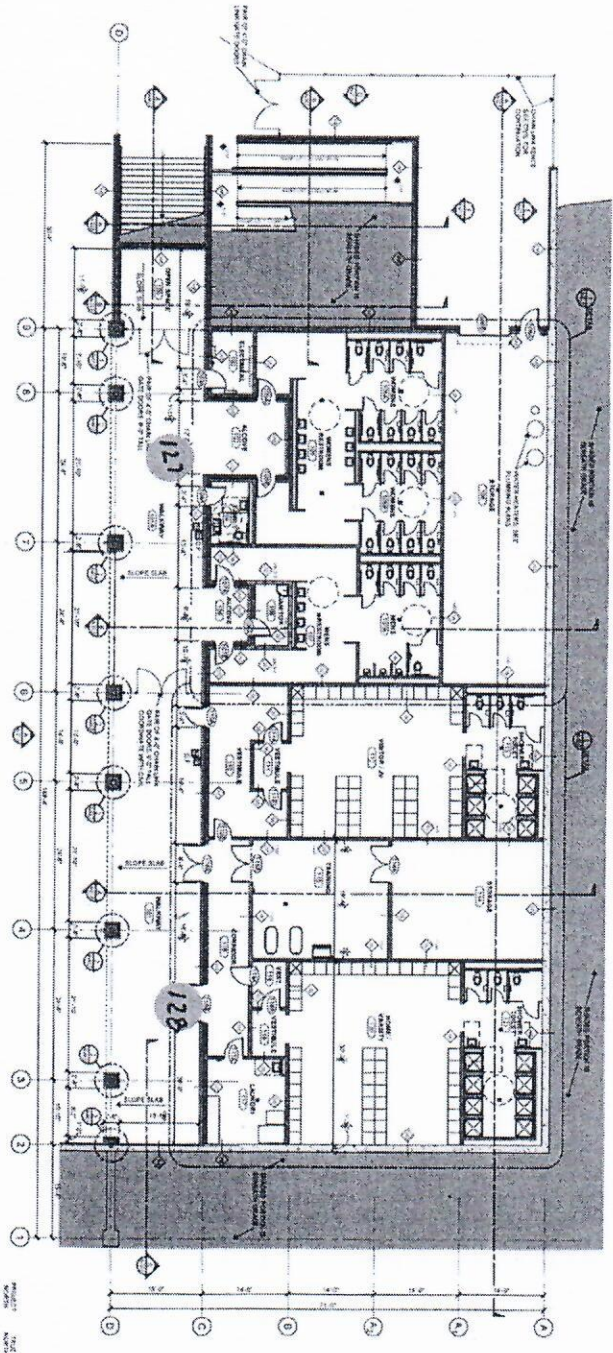
optimo



DATE: 10/20/10
DRAWN BY: [Name]
CHECKED BY: [Name]



2 SECOND FLOOR PLAN



1 FIRST FLOOR PLAN

FLOOR PLAN SHEET NOTES

1. REFER TO GENERAL NOTES FOR MATERIALS AND FINISHES.
2. ALL DIMENSIONS UNLESS OTHERWISE NOTED ARE TO FACE UNLESS INDICATED OTHERWISE.
3. ALL PARTITIONS TO BE CONSTRUCTION TYPE 1 UNLESS OTHERWISE NOTED.
4. ALL PARTITIONS TO BE CONSTRUCTION TYPE 2 UNLESS OTHERWISE NOTED.
5. ALL PARTITIONS TO BE CONSTRUCTION TYPE 3 UNLESS OTHERWISE NOTED.
6. ALL PARTITIONS TO BE CONSTRUCTION TYPE 4 UNLESS OTHERWISE NOTED.
7. ALL PARTITIONS TO BE CONSTRUCTION TYPE 5 UNLESS OTHERWISE NOTED.
8. ALL PARTITIONS TO BE CONSTRUCTION TYPE 6 UNLESS OTHERWISE NOTED.
9. ALL PARTITIONS TO BE CONSTRUCTION TYPE 7 UNLESS OTHERWISE NOTED.
10. ALL PARTITIONS TO BE CONSTRUCTION TYPE 8 UNLESS OTHERWISE NOTED.

PARTITION NOTES

1. ALL PARTITIONS TO BE CONSTRUCTION TYPE 1 UNLESS OTHERWISE NOTED.
2. ALL PARTITIONS TO BE CONSTRUCTION TYPE 2 UNLESS OTHERWISE NOTED.
3. ALL PARTITIONS TO BE CONSTRUCTION TYPE 3 UNLESS OTHERWISE NOTED.
4. ALL PARTITIONS TO BE CONSTRUCTION TYPE 4 UNLESS OTHERWISE NOTED.
5. ALL PARTITIONS TO BE CONSTRUCTION TYPE 5 UNLESS OTHERWISE NOTED.
6. ALL PARTITIONS TO BE CONSTRUCTION TYPE 6 UNLESS OTHERWISE NOTED.
7. ALL PARTITIONS TO BE CONSTRUCTION TYPE 7 UNLESS OTHERWISE NOTED.
8. ALL PARTITIONS TO BE CONSTRUCTION TYPE 8 UNLESS OTHERWISE NOTED.

PARTITION LEGEND



PROJECT: WEST RIDGE HIGH SCHOOL ATHLETIC BUILDINGS
 DATE: JAN 1, 2010
 CHECKED BY: [Name]
 DRAWN BY: [Name]

FLOOR PLANS - FIELD HOUSE

A-11.F



WEST RIDGE HIGH SCHOOL ATHLETIC BUILDINGS

