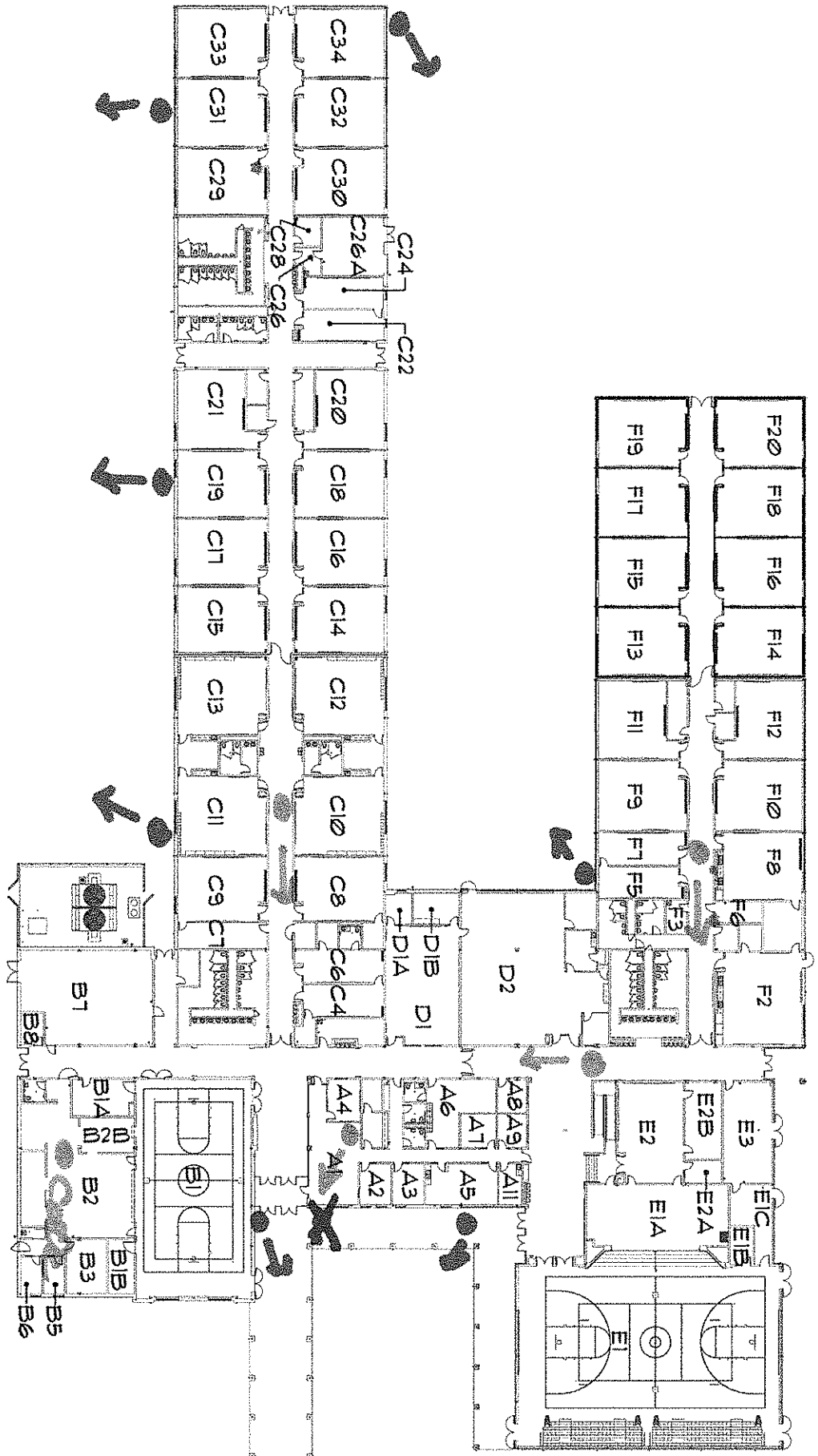


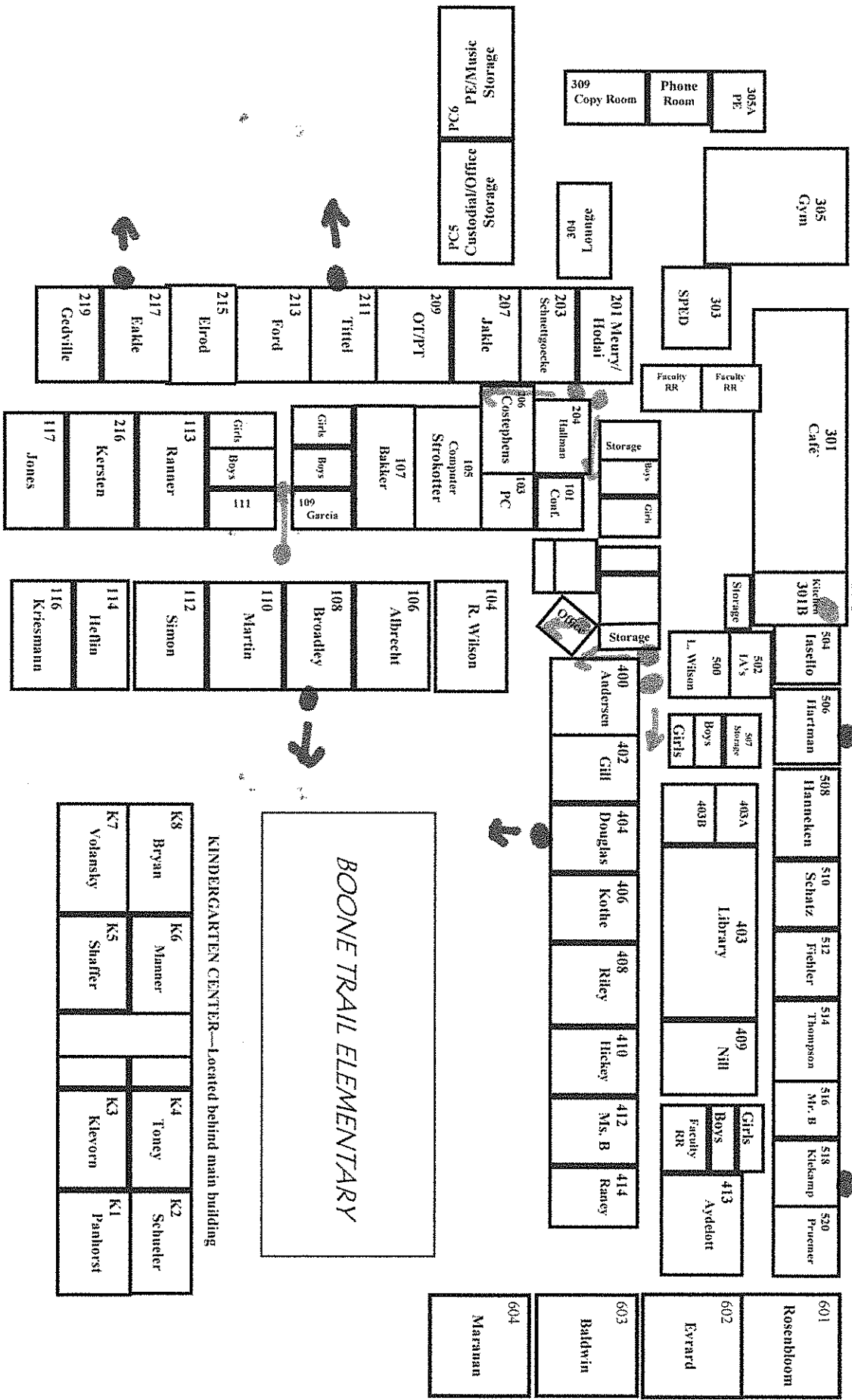
PEINE RIDGE ELEMENTARY SCHOOL

DISCOVERY RIDGE ELEMENTARY SCHOOL



DRE

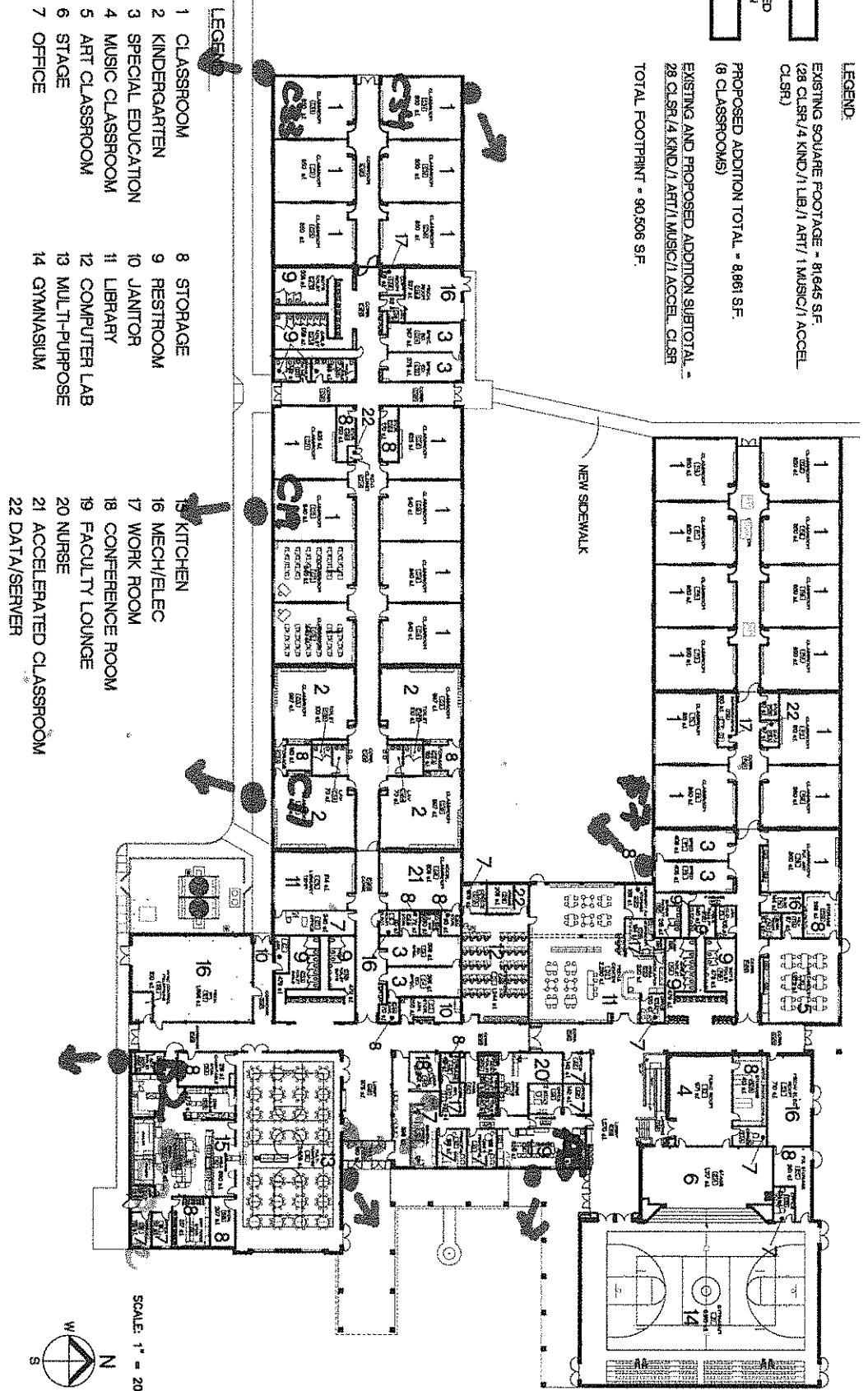
BTE



LVE



LEGEND:
 EXISTING SQUARE FOOTAGE = 81,645 S.F.
 (28 CL.SR./4 KIND./1 LIB./1 ART./1 MUSIC./1 ACCEL. CL.SR.)
 PROPOSED ADDITION TOTAL = 8,861 S.F.
 (8 CLASSROOMS)
 EXISTING AND PROPOSED ADDITION SUBTOTAL =
 28 CL.SR./4 KIND./1 ART./1 MUSIC./1 ACCEL. CL.SR.
 TOTAL FOOTPRINT = 90,506 S.F.



PROPOSED ADDITION - LAKEVIEW ELEMENTARY SCHOOL

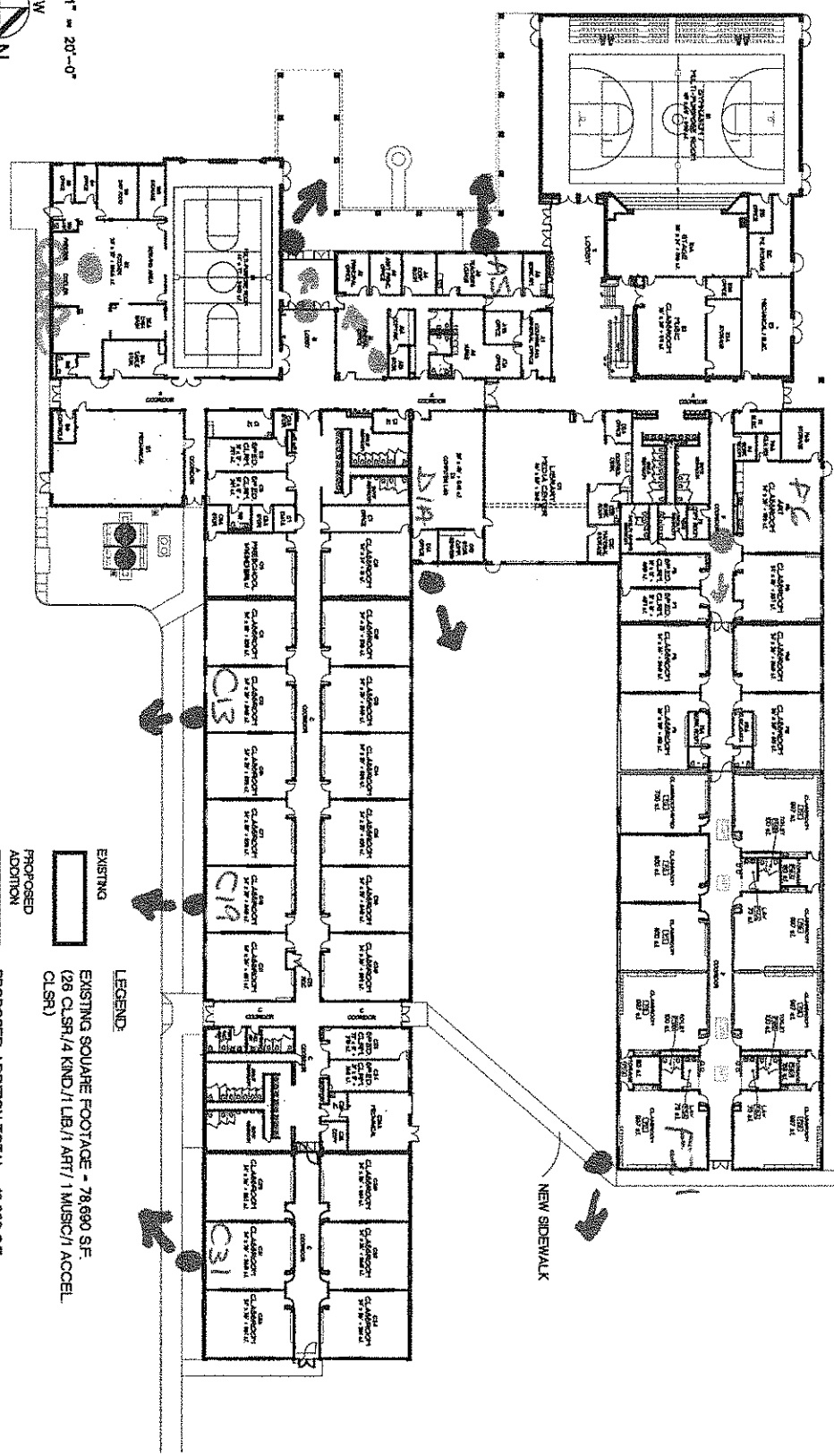
SK 1.1

HOENER ASSOCIATES, INC.
 ARCHITECTS
 ST. LOUIS, MISSOURI
 ORIGIN DATE 04/17/11
 PROJ. NO. 11-061

LAKEVIEW ELEMENTARY SCHOOL ON MEXICO ROAD
 WENTZVILLE R-IV SCHOOL DISTRICT
 WENTZVILLE, MISSOURI

REVISION DATES	

DUE



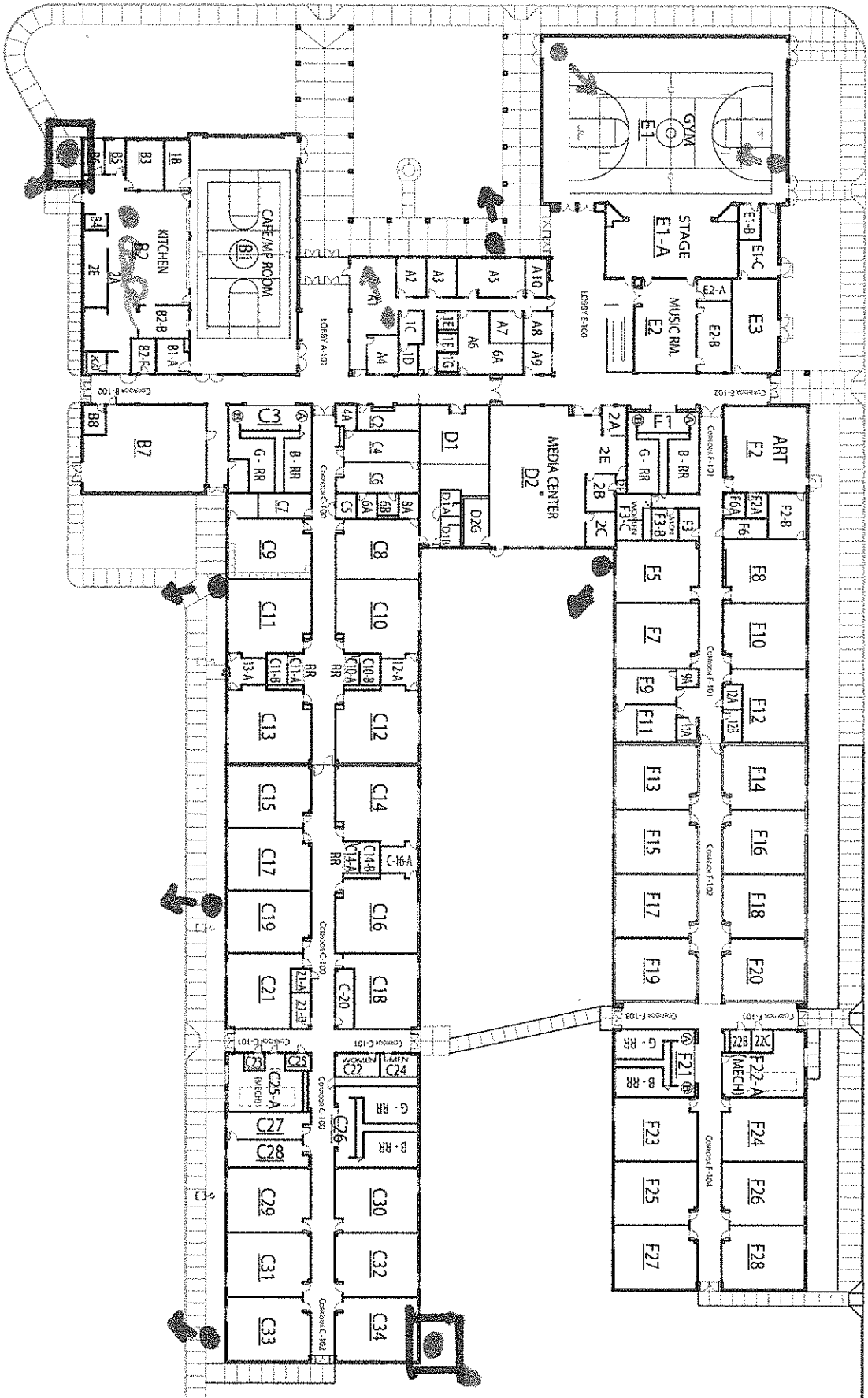
PROPOSED ADDITION - DUELLO ELEMENTARY SCHOOL

SK 1.1

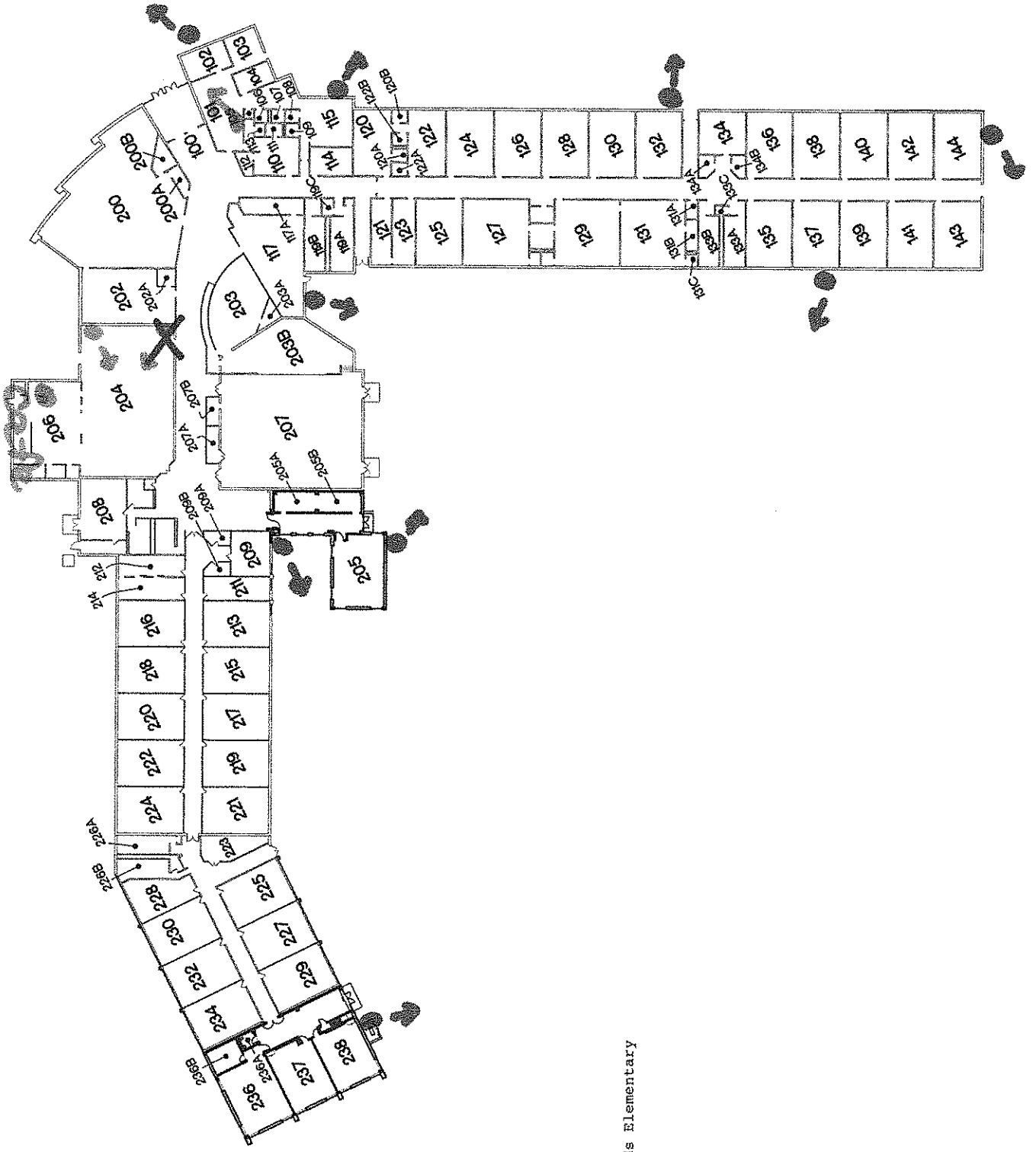
HOENER ASSOCIATES, INC.
 ARCHITECTS
 ST. LOUIS, MISSOURI
 ORIGIN DATE 04/17/11
 PROJ. NO. 11-064

DUELLO ELEMENTARY SCHOOL ON DUELLO ROAD
 WENTZVILLE R-IV SCHOOL DISTRICT
 WENTZVILLE, MISSOURI

REVISION DATE:	

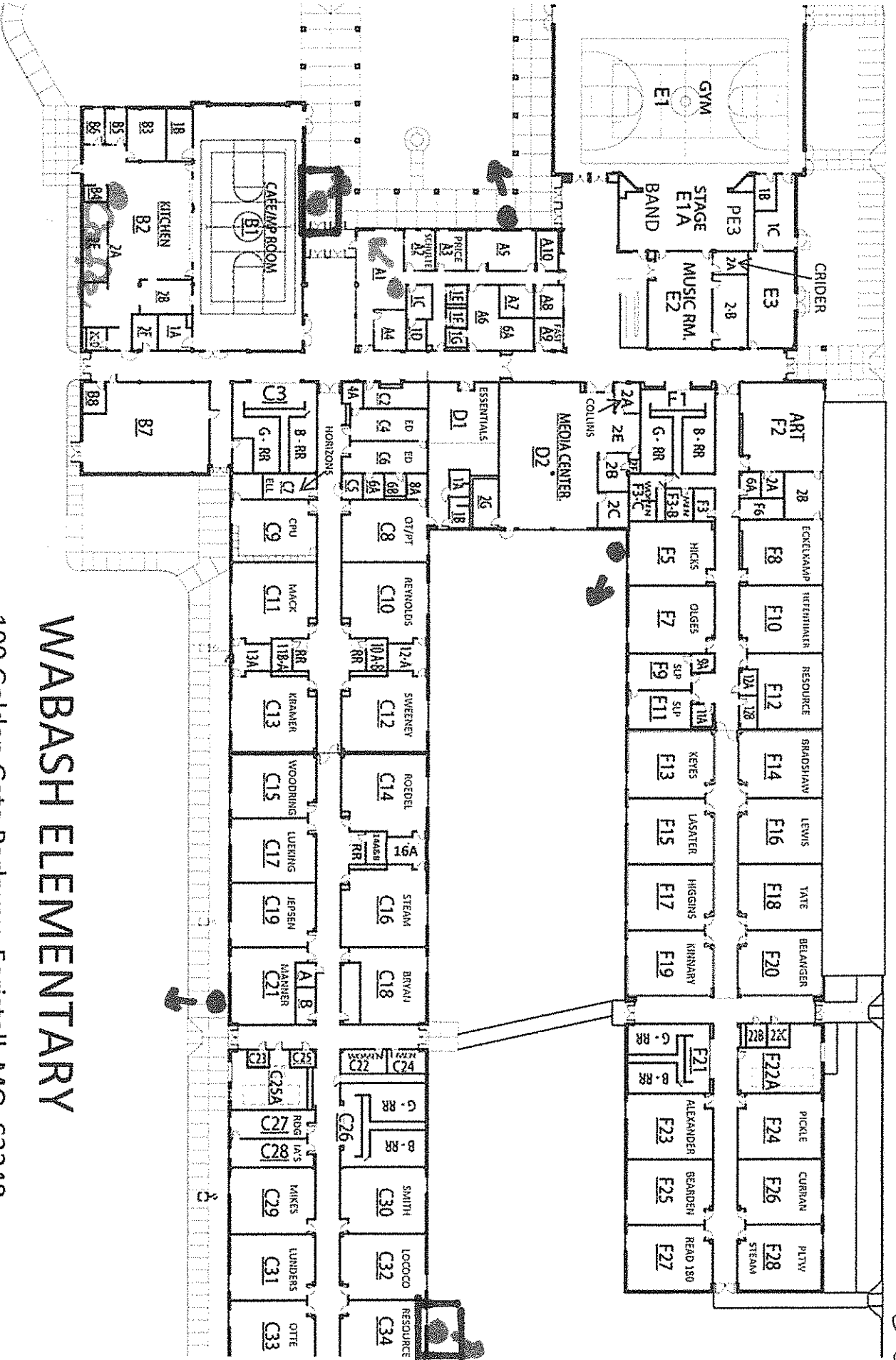


SCE



Crossroads Elementary

CRE

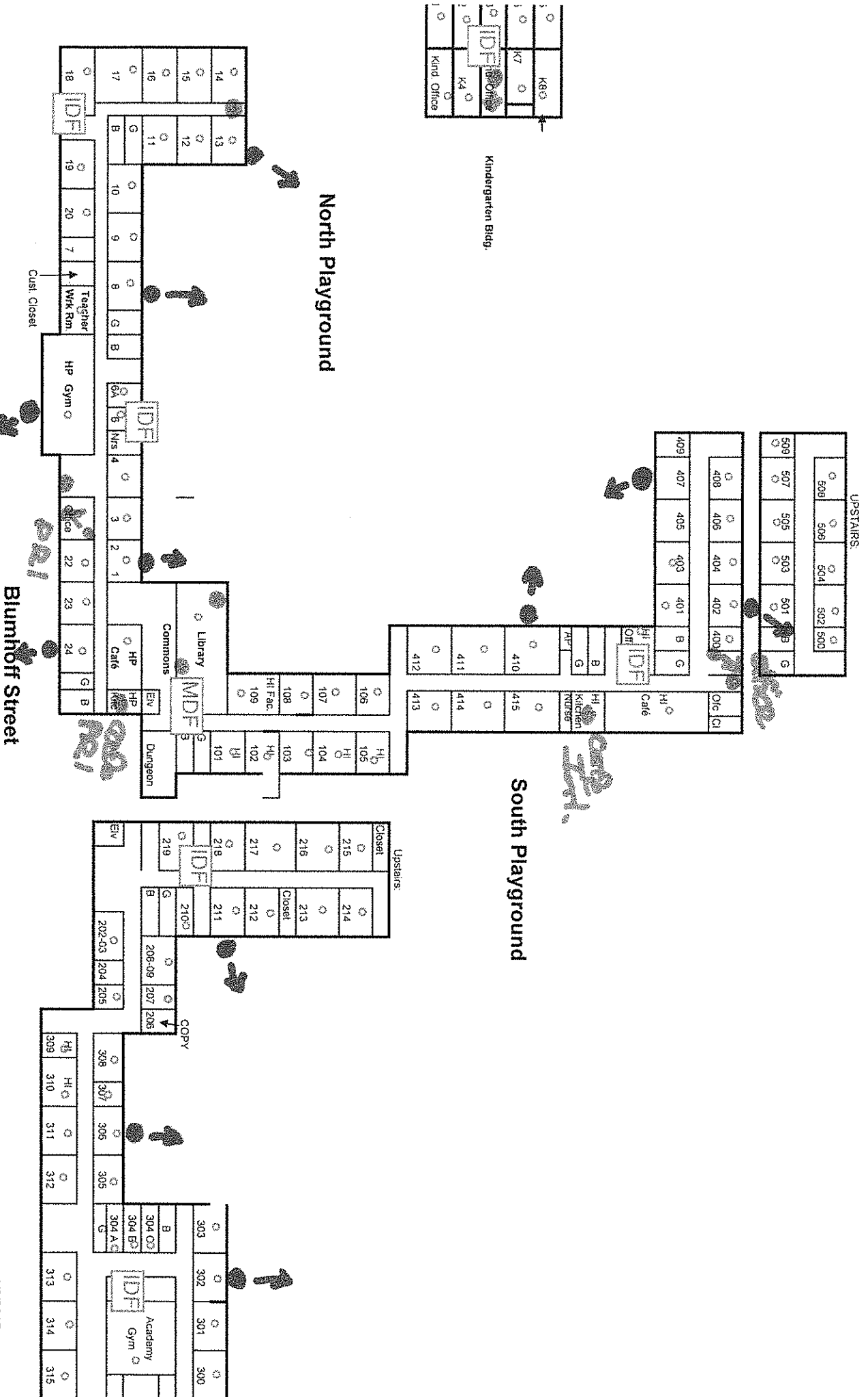


WABASH ELEMENTARY

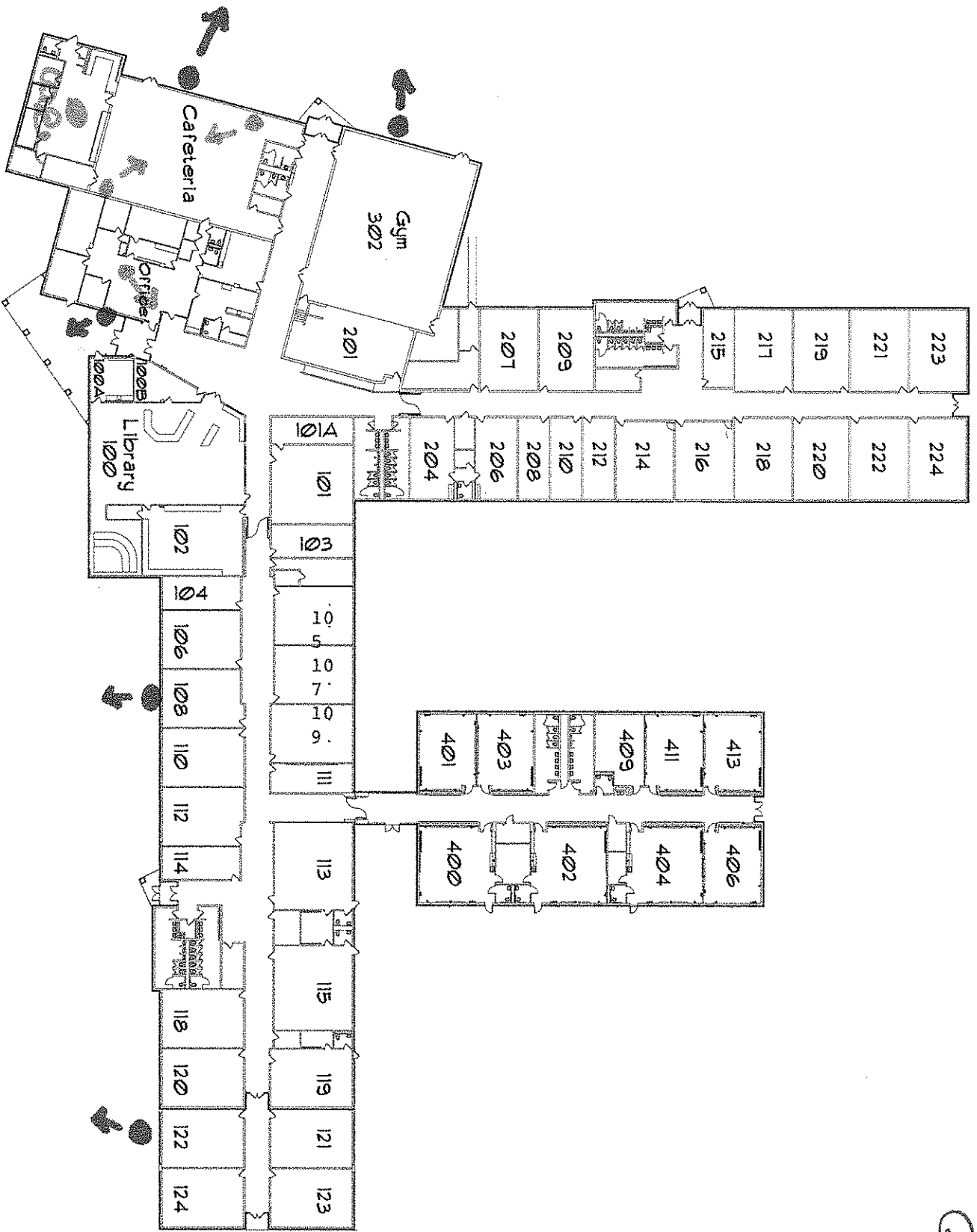
100 Golden Gate Parkway, Foristell, MO 63348

WB2

HERITAGE PRIMARY & INTERMEDIATE

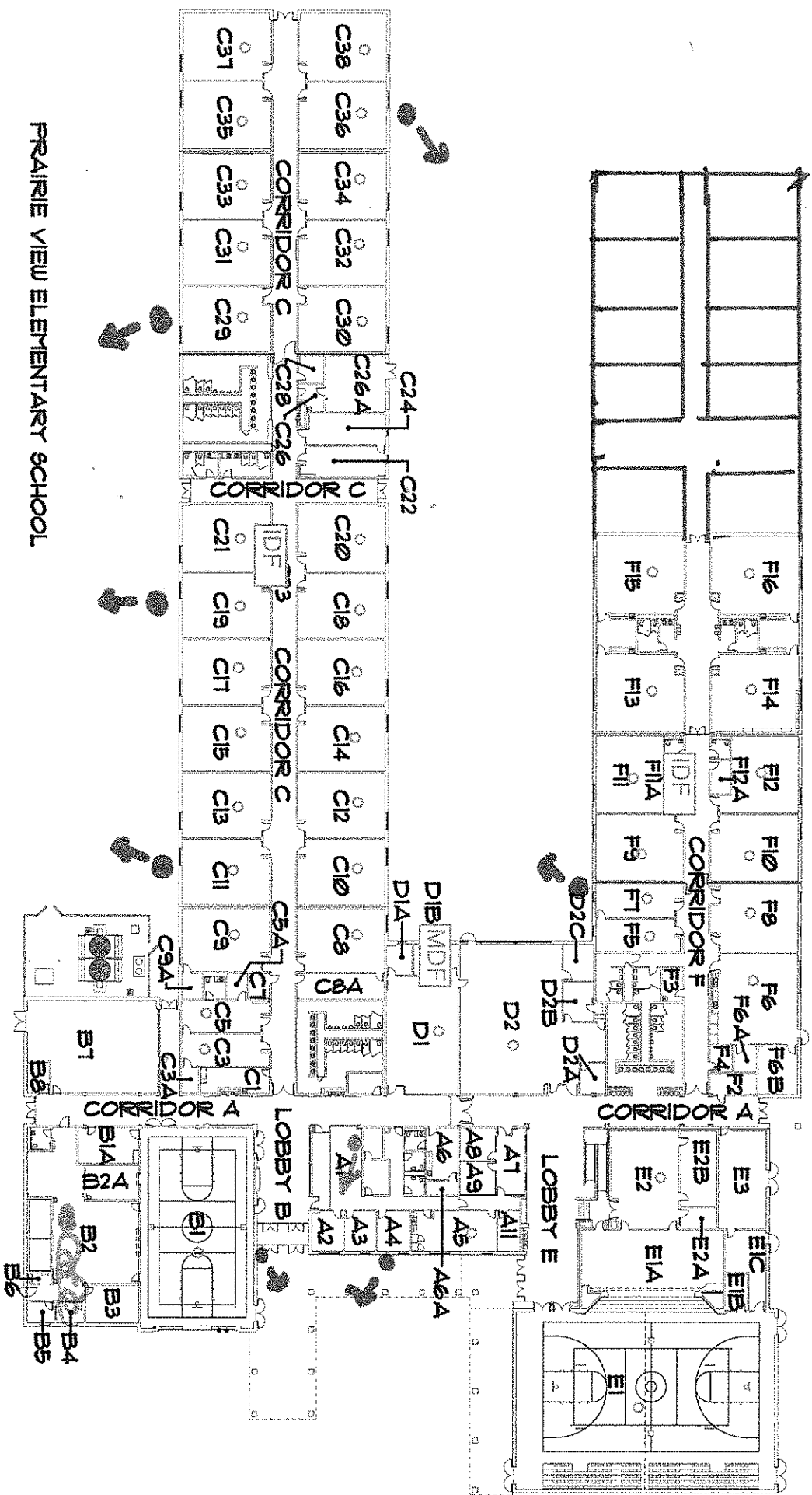


HC



GREEN TREE ELEMENTARY SCHOOL

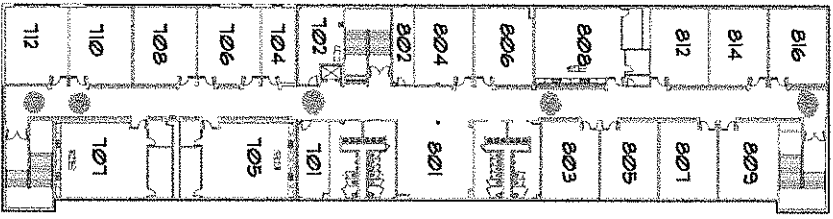
PVE



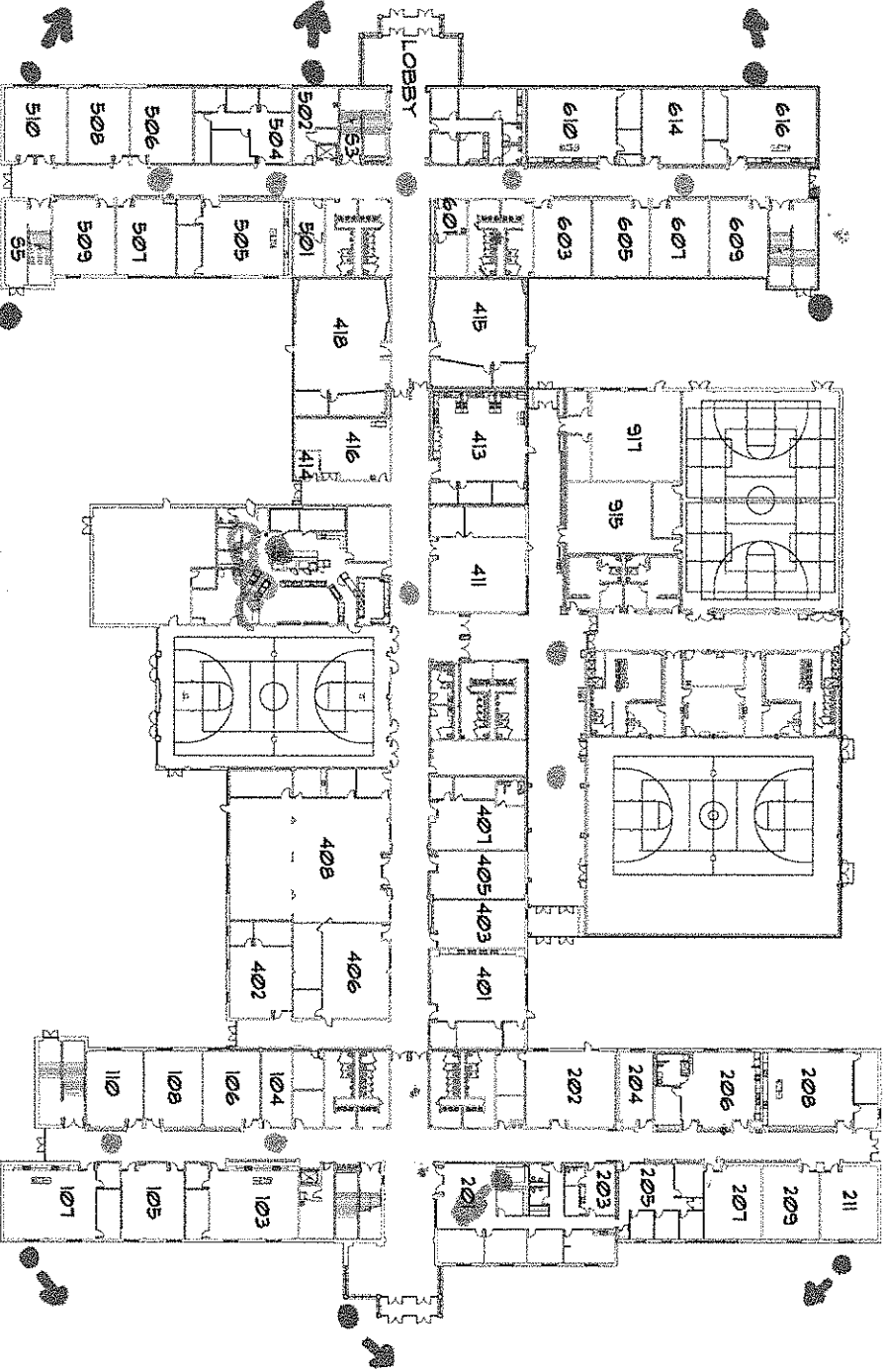
PRAIRIE VIEW ELEMENTARY SCHOOL

Frontier Middle School

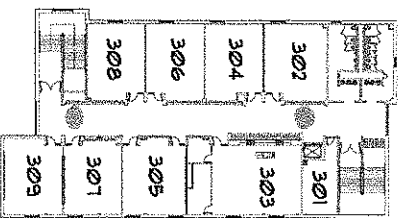
FMS



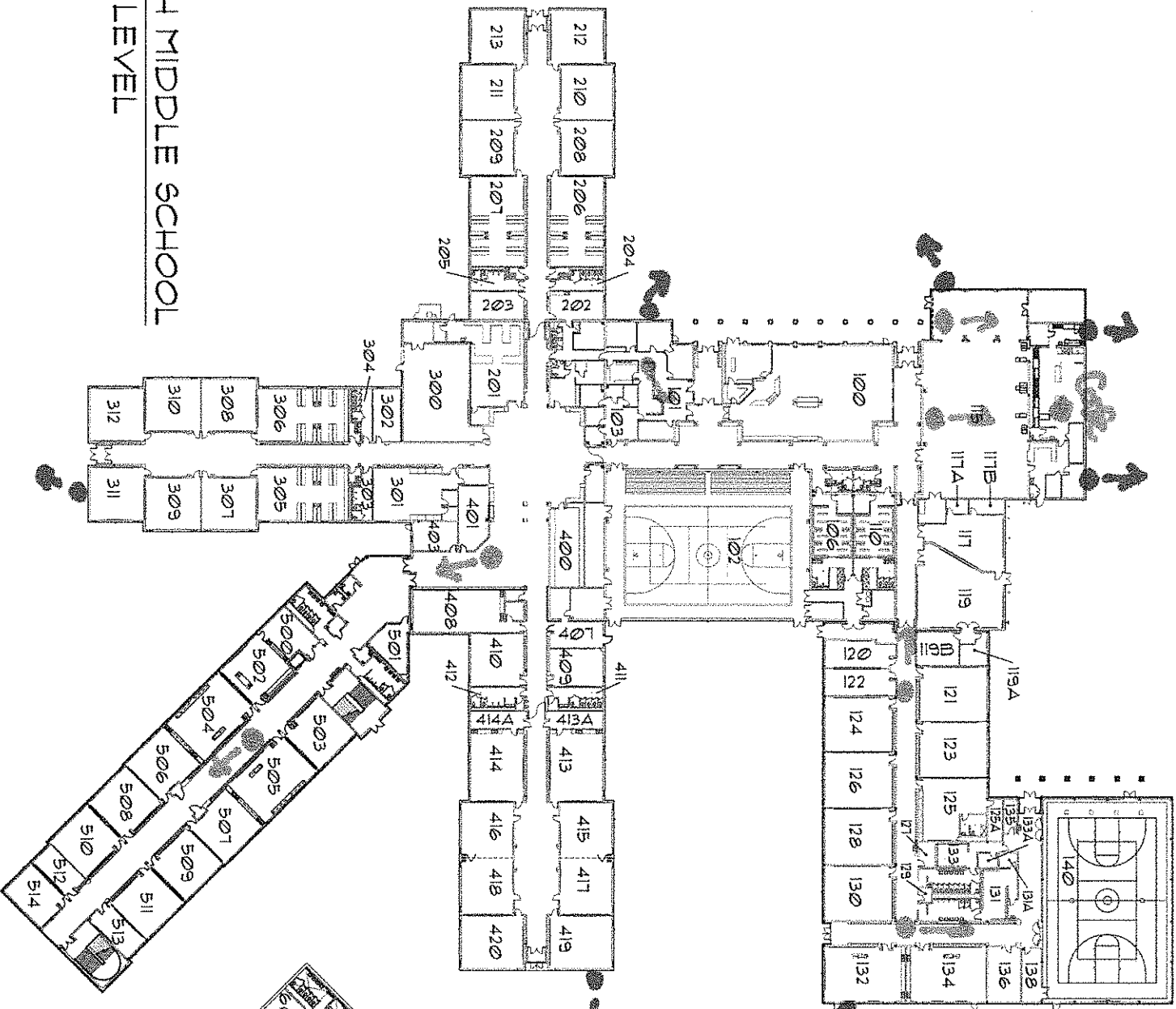
UPPER FLOOR



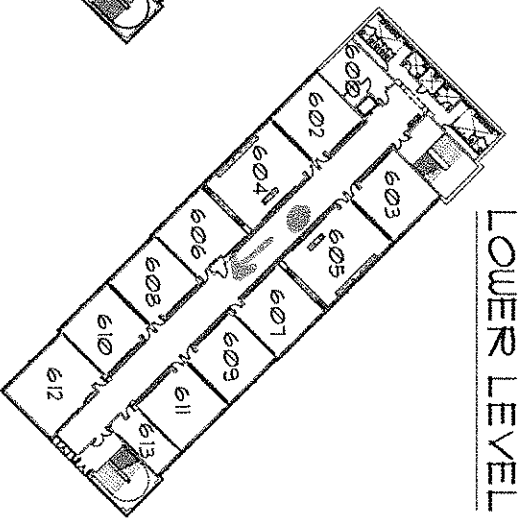
MAIN FLOOR



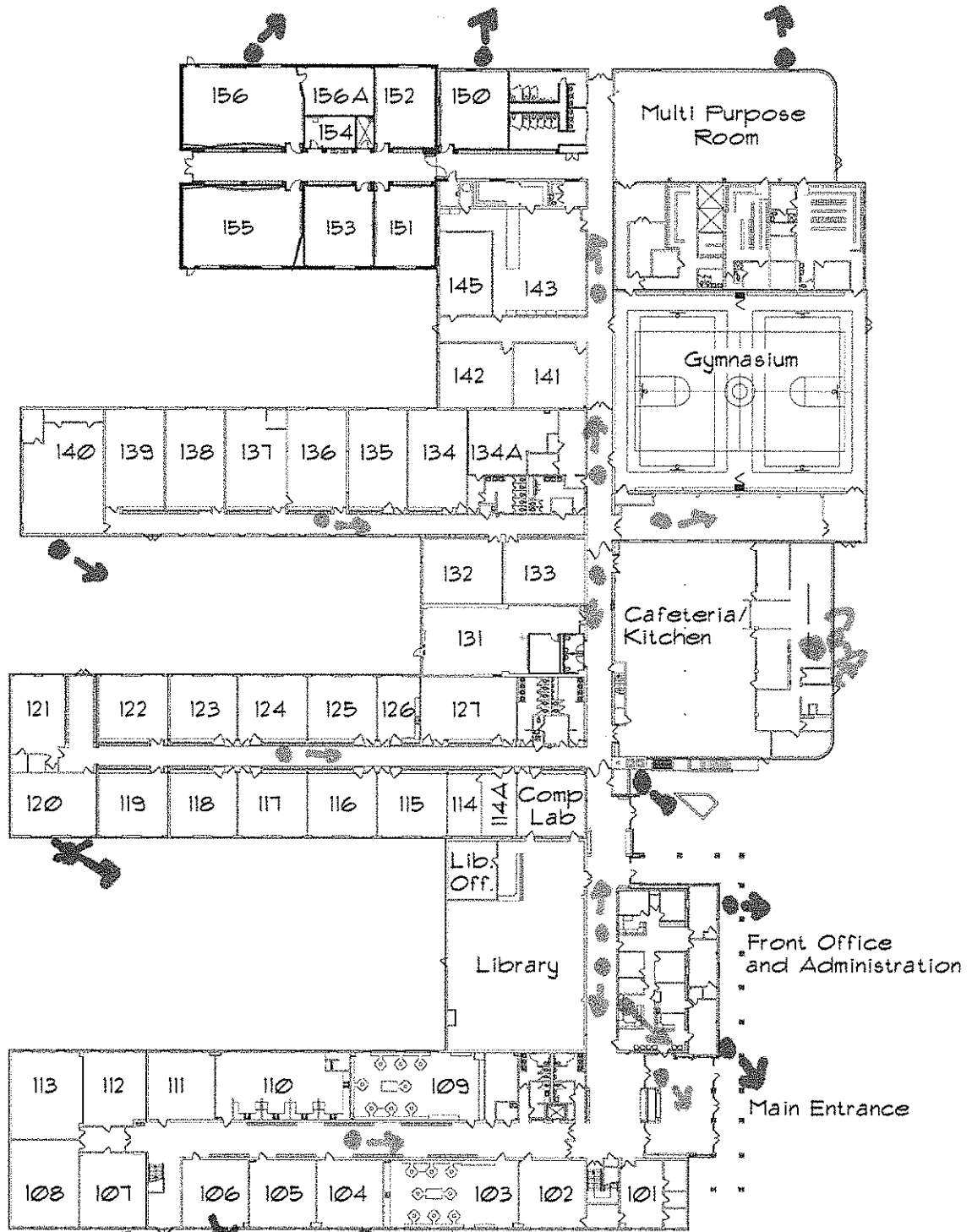
UPPER FLOOR



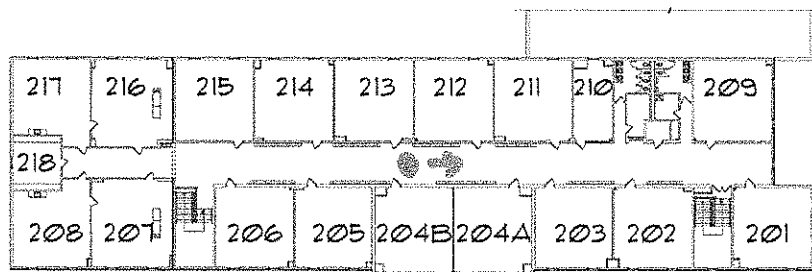
SOUTH MIDDLE SCHOOL
MAIN LEVEL



LOWER LEVEL



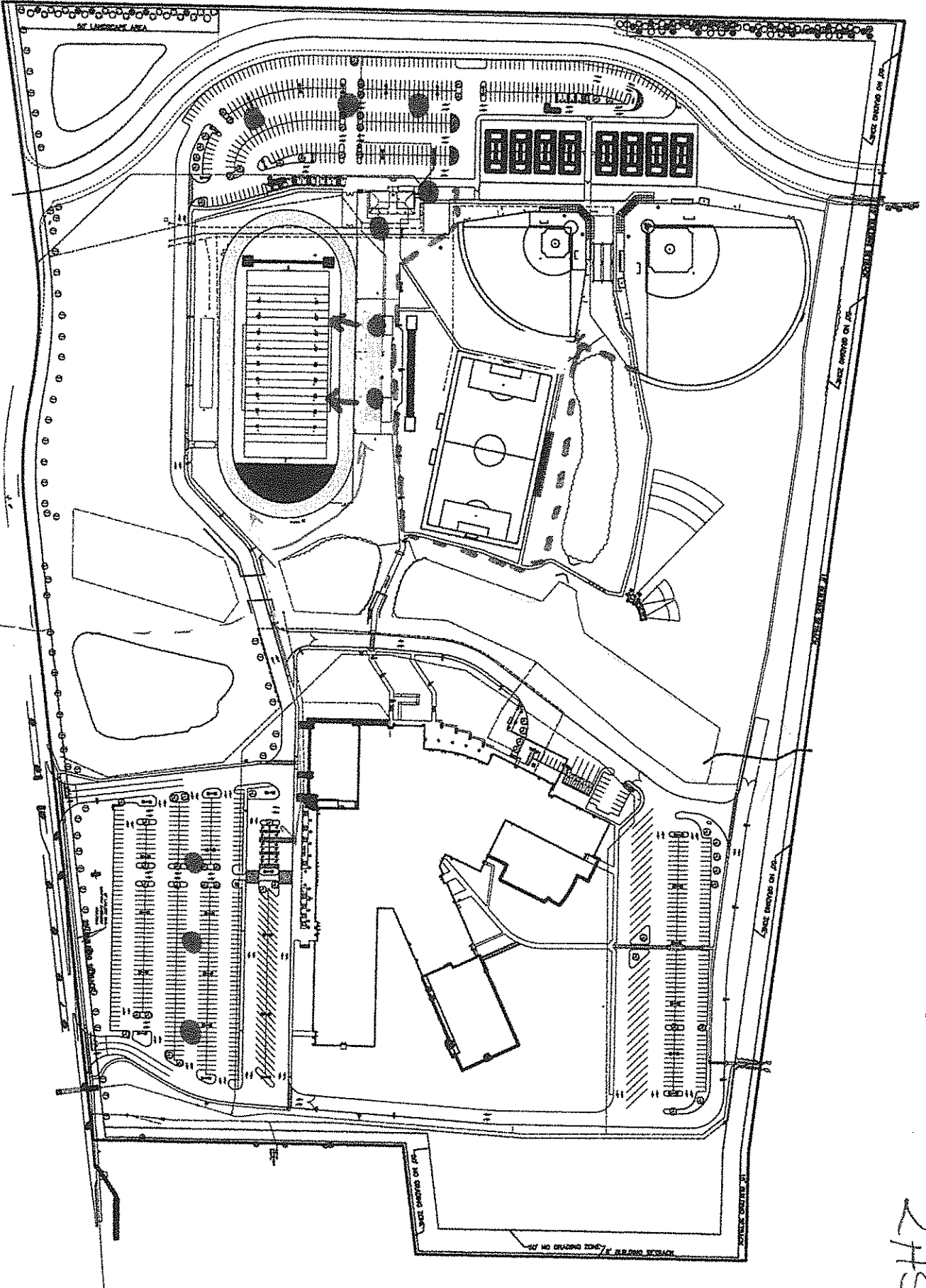
WENTZVILLE MIDDLE SCHOOL
 MAIN LEVEL



UPPER LEVEL

WMS

Fiber needed



--- face
 @ Camera

LHS

PLAN LEGEND

A. ADMINISTRATION SUITE

- A1 RECEPTION AREA
- A2 WORK ROOM
- A3 STORAGE
- A4 OFFICE
- A5 ASSISTANT PRINCIPAL
- A6 9th GRADE ACADEMY ADMIN AREA
- A7 CONFERENCE ROOM
- A8 ADMIN ASSISTANT

B. ADMIN SUITE SUPPORT AREAS

- B1 GUIDANCE RECEPTION
- B2 CAREERS CENTER RECEPTION
- B3 GUIDANCE GENERAL OFFICE
- B4 CAREERS GENERAL OFFICE
- B5 CONFERENCE ROOM
- B6 WORK ROOM AND STORAGE
- B7 NURSE AREA
- B8 SIXX ROOM
- B9 WORK ROOM
- B10 WORK ROOM
- B11 SECURE STORAGE ROOM
- B12 RESOURCE/SECURITY OFFICE
- B13 RECORD STORAGE
- B14 STAFF/STUDENT/ADMIN RESTROOMS

C. FACULTY WORK / SUPPORT AREAS

- C1 CENTRAL COPY
- C2 FACULTY WORKROOM
- C3 STORAGE

D. 9th GRADE ACADEMY

- D1 GENERAL CLASSROOM
- D2 SCIENCE LAB
- D3A SCIENCE PREP

E. 10th, 11th, and 12th GRADE CORE CLASSROOMS

- E1 GENERAL CLASSROOM
- E2A SCIENCE PREP
- E2B SCIENCE STORAGE

F. NON-CORE CURRICULUM ROOMS

- F1 ART
- F2 ART CLASSROOM
- F3 ART STORAGE
- F4 KITCHEN
- F5 RESOURCE STORAGE
- F6 BUSINESS CLASSROOM
- F7 STORAGE
- F8 PLTW
- F9A FLOW LAB
- F9B STORAGE
- F9C STORAGE
- F9D STORAGE
- F9E STORAGE
- F9F PROJECT ROOM
- F9G CLOTHING STORAGE
- F9H FACS FOOD LAB
- F9I PAINTING
- F9J LAB
- F9K LAB
- F9L LAB
- F9M LAB
- F9N LAB
- F9O LAB
- F9P LAB
- F9Q LAB
- F9R LAB
- F9S LAB
- F9T LAB
- F9U LAB
- F9V LAB
- F9W LAB
- F9X LAB
- F9Y LAB
- F9Z LAB
- F9AA LAB
- F9AB LAB
- F9AC LAB
- F9AD LAB
- F9AE LAB
- F9AF LAB
- F9AG LAB
- F9AH LAB
- F9AI LAB
- F9AJ LAB
- F9AK LAB
- F9AL LAB
- F9AM LAB
- F9AN LAB
- F9AO LAB
- F9AP LAB
- F9AQ LAB
- F9AR LAB
- F9AS LAB
- F9AT LAB
- F9AU LAB
- F9AV LAB
- F9AW LAB
- F9AX LAB
- F9AY LAB
- F9AZ LAB

F. NON-CORE CURRICULUM ROOMS (cont)

- F9A1 FLOW LAB
- F9A2 STORAGE
- F9A3 STORAGE
- F9A4 STORAGE
- F9A5 STORAGE
- F9A6 STORAGE
- F9A7 STORAGE
- F9A8 STORAGE
- F9A9 STORAGE
- F9A10 STORAGE
- F9A11 STORAGE
- F9A12 STORAGE
- F9A13 STORAGE
- F9A14 STORAGE
- F9A15 STORAGE
- F9A16 STORAGE
- F9A17 STORAGE
- F9A18 STORAGE
- F9A19 STORAGE
- F9A20 STORAGE
- F9A21 STORAGE
- F9A22 STORAGE
- F9A23 STORAGE
- F9A24 STORAGE
- F9A25 STORAGE
- F9A26 STORAGE
- F9A27 STORAGE
- F9A28 STORAGE
- F9A29 STORAGE
- F9A30 STORAGE
- F9A31 STORAGE
- F9A32 STORAGE
- F9A33 STORAGE
- F9A34 STORAGE
- F9A35 STORAGE
- F9A36 STORAGE
- F9A37 STORAGE
- F9A38 STORAGE
- F9A39 STORAGE
- F9A40 STORAGE
- F9A41 STORAGE
- F9A42 STORAGE
- F9A43 STORAGE
- F9A44 STORAGE
- F9A45 STORAGE
- F9A46 STORAGE
- F9A47 STORAGE
- F9A48 STORAGE
- F9A49 STORAGE
- F9A50 STORAGE
- F9A51 STORAGE
- F9A52 STORAGE
- F9A53 STORAGE
- F9A54 STORAGE
- F9A55 STORAGE
- F9A56 STORAGE
- F9A57 STORAGE
- F9A58 STORAGE
- F9A59 STORAGE
- F9A60 STORAGE
- F9A61 STORAGE
- F9A62 STORAGE
- F9A63 STORAGE
- F9A64 STORAGE
- F9A65 STORAGE
- F9A66 STORAGE
- F9A67 STORAGE
- F9A68 STORAGE
- F9A69 STORAGE
- F9A70 STORAGE
- F9A71 STORAGE
- F9A72 STORAGE
- F9A73 STORAGE
- F9A74 STORAGE
- F9A75 STORAGE
- F9A76 STORAGE
- F9A77 STORAGE
- F9A78 STORAGE
- F9A79 STORAGE
- F9A80 STORAGE
- F9A81 STORAGE
- F9A82 STORAGE
- F9A83 STORAGE
- F9A84 STORAGE
- F9A85 STORAGE
- F9A86 STORAGE
- F9A87 STORAGE
- F9A88 STORAGE
- F9A89 STORAGE
- F9A90 STORAGE
- F9A91 STORAGE
- F9A92 STORAGE
- F9A93 STORAGE
- F9A94 STORAGE
- F9A95 STORAGE
- F9A96 STORAGE
- F9A97 STORAGE
- F9A98 STORAGE
- F9A99 STORAGE
- F9A100 STORAGE

G. MEDIA CENTER

- G1 MEDIA CENTER
- G2 COMPUTER LAB
- G3 COMPUTER LAB
- G4 COMPUTER LAB
- G5 PERIODICAL STORAGE
- G6 STUDY ROOM
- G7 STUDY ROOM
- G8 STUDY ROOM

H. PHYSICAL EDUCATION / ATHLETICS

- H1 ATHLETICS DIRECTOR OFFICE
- H2 ATHLETIC DIRECTOR OFFICE
- H3 MAN GYM / PE STORAGE
- H4 MASC GYM GYM STORAGE
- H5 MASC GYM GYM STORAGE
- H6 YETALI STORAGE
- H7 YETALI STORAGE
- H8 HEALTH ROOM
- H9 HEALTH ROOM
- H10 HEALTH CLASSROOM
- H11 HEALTH STORAGE
- H12 PE / YETALI LOCKER ROOMS
- H13 COACHES OFFICES AREA
- H14 COACHES OFFICES AREA
- H15 PE LOCKER ROOMS
- H16 PE LOCKER ROOMS
- H17 COACHES OFFICES
- H18 TRAINING ROOM
- H19 ATLETIC GYM STORAGE
- H20 ATLETIC GYM STORAGE
- H21 DRAMA / AUDITORIUM
- H22 DRAMA CLASSROOM
- H23 CLASSROOM STORAGE
- H24 AUDITORIUM
- H25 STAGE
- H26 STAGE
- H27 STAGE
- H28 SCENE SHOP
- H29 SCENE STORAGE

I. BUILDING SERVICES

- I1 STAGE STORAGE
- I2 STRESSING ROOM
- I3 MAKE UP ROOM
- I4 DRY CLEAN ROOM
- I5 RESTROOM
- I6 CATERING / COMMONS
- I7 STORAGE / CATERING
- I8 RESTROOM
- I9 BECA ROOM
- I10 CONCESSION STAND
- I11 CONCESSION STORAGE
- I12 CONCESSION STORAGE
- I13 STUCCO

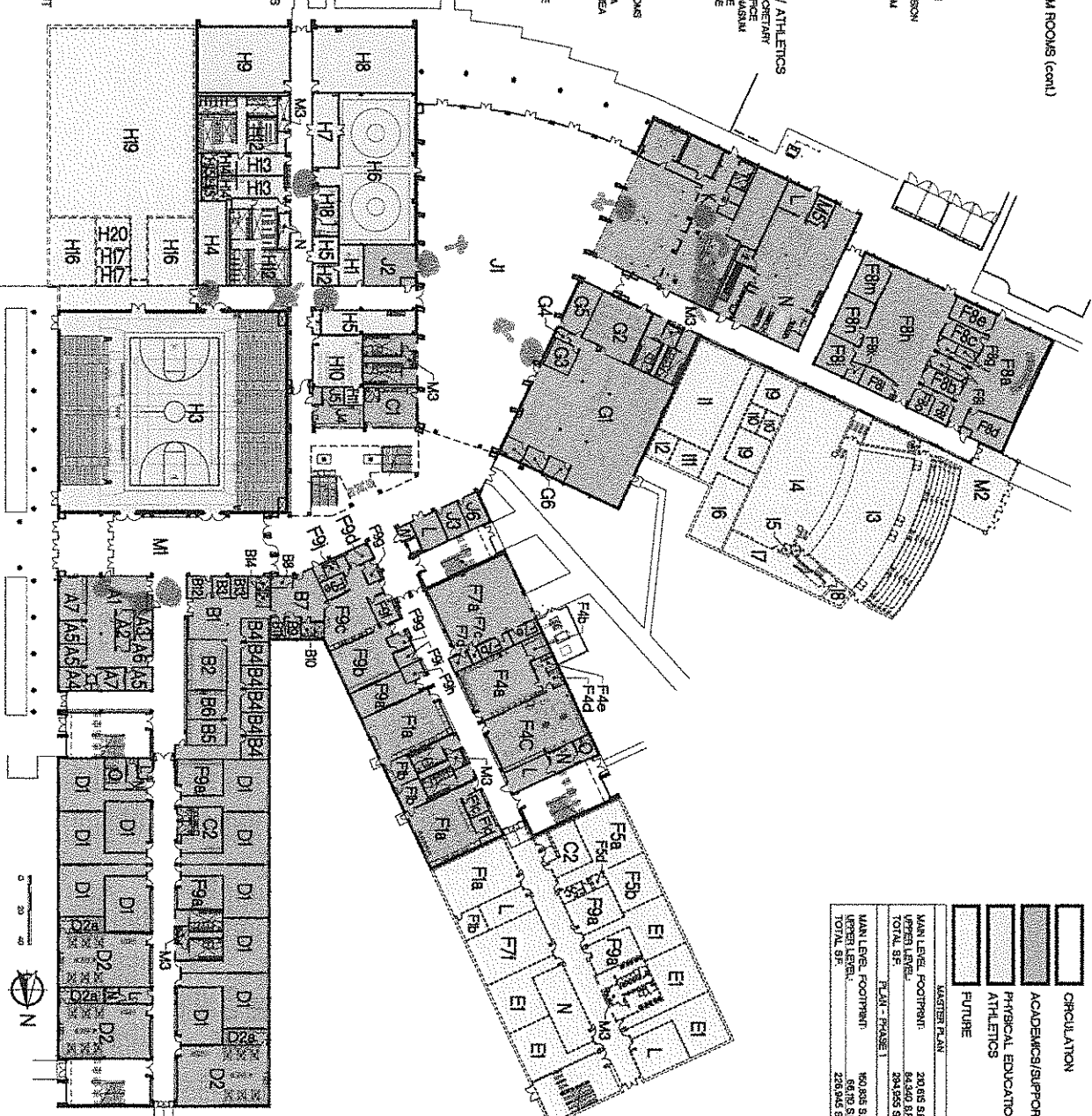
J. GENERAL SERVICES

- J1 BUILDING SERVICES
- J2 MAIN LOBBY
- J3 LOBBY (SECONDARY)
- J4 JANTON CLOSETS
- J5 JANTON CLOSETS
- J6 OFFICE

K. MECHANICAL and ELECTRICAL EQUIPMENT

- K1 MECHANICAL
- K2 ELECTRICAL EQUIPMENT
- K3 IT ROOM

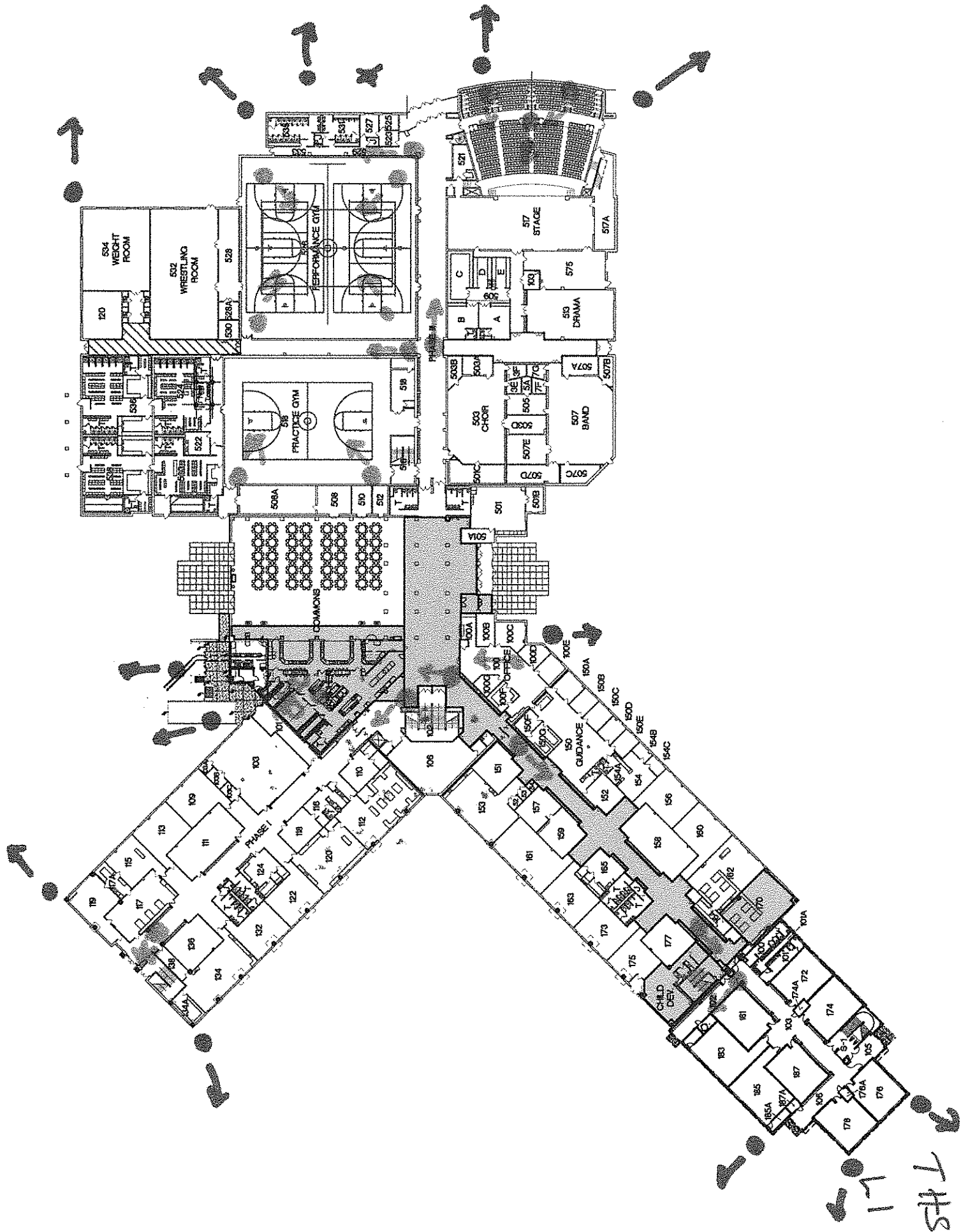
MAIN LEVEL FLOOR PLAN - PHASE 1 and FUTURE

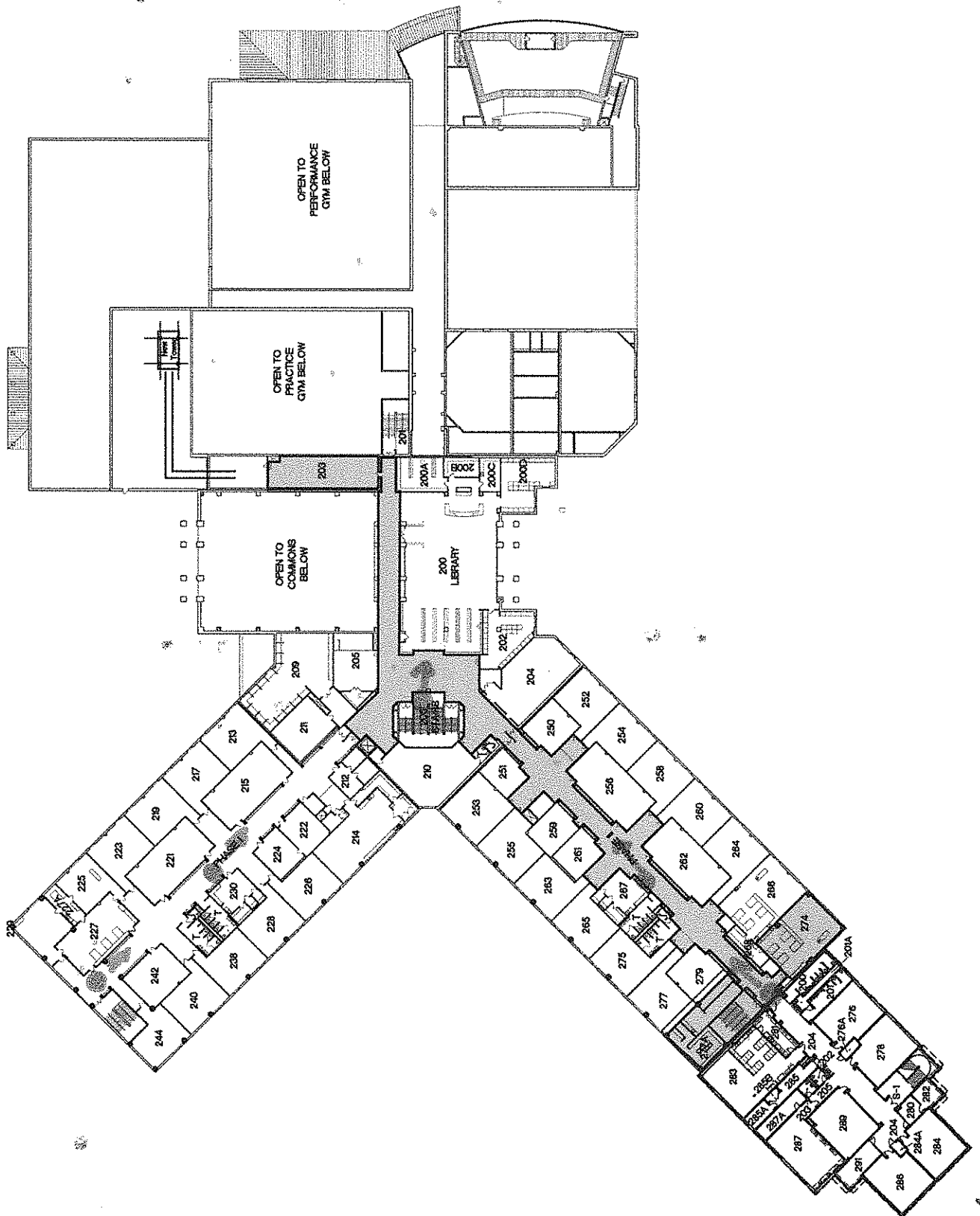


MAIN LEVEL, FOOTPRINT:	20,016 SF
ADDITIONAL LEVELS:	84,440 SF
TOTAL SF:	104,456 SF
MAIN LEVEL, FOOTPRINT:	
FUTURE:	68,178 SF
TOTAL SF:	172,634 SF

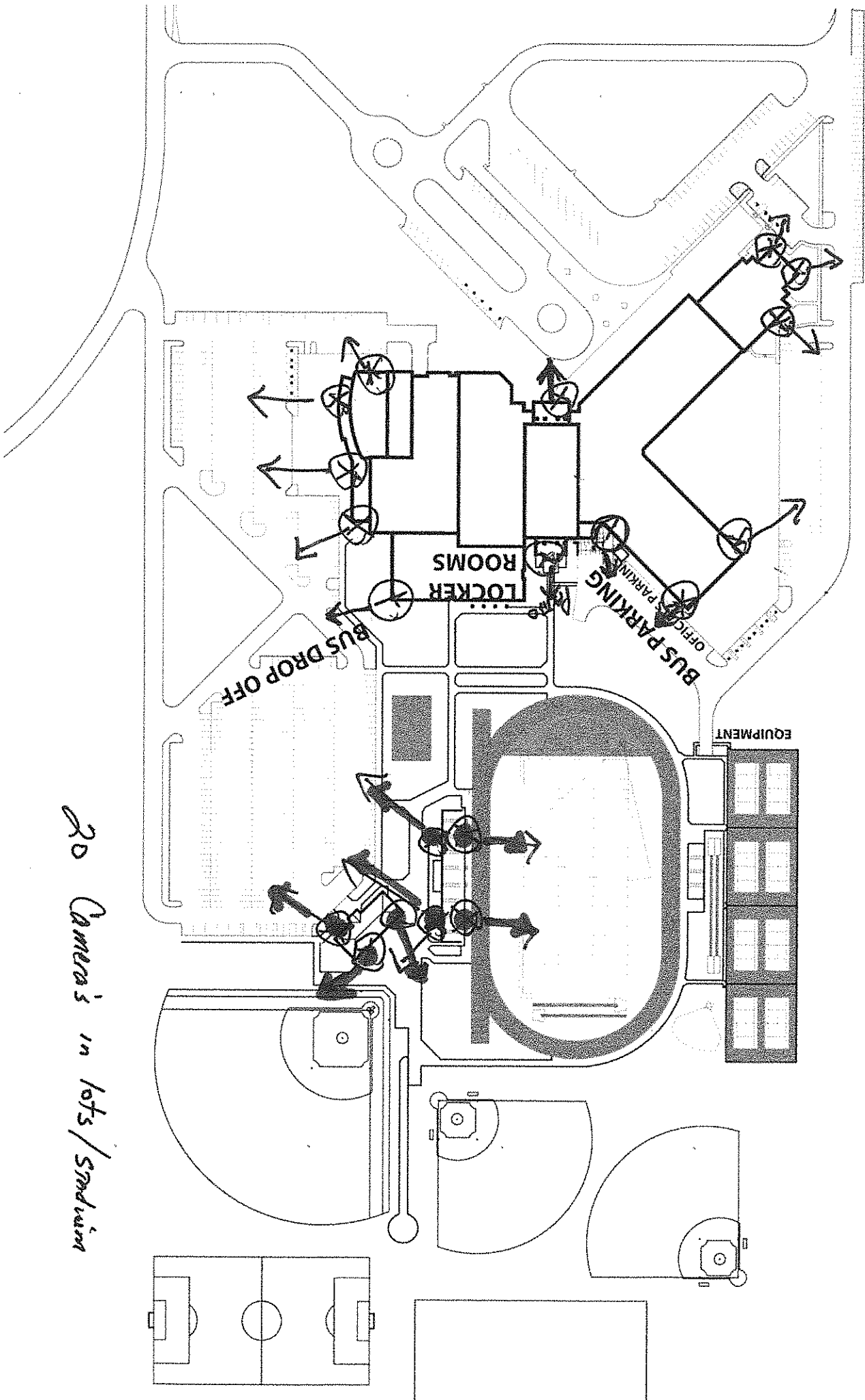
CHS
 71

19-004 NEW WENTZVILLE HIGH SCHOOL - 01/21/21 F-147





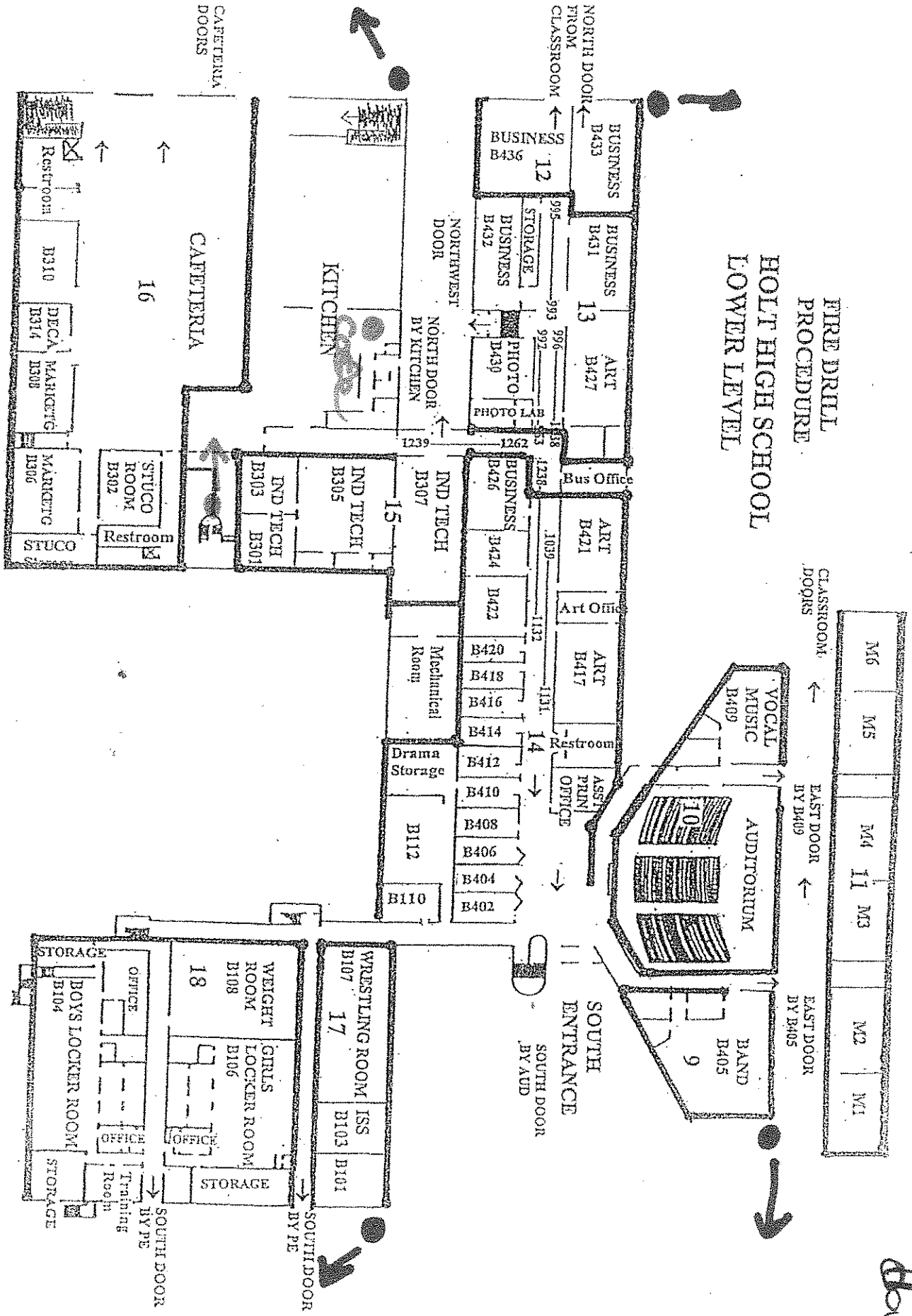
12
TAS



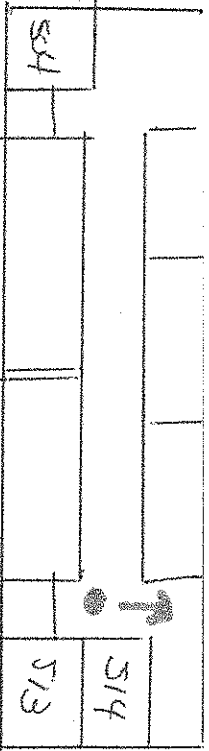
20 Camera's in lots/Stadium

HOLT HIGH SCHOOL LOWER LEVEL

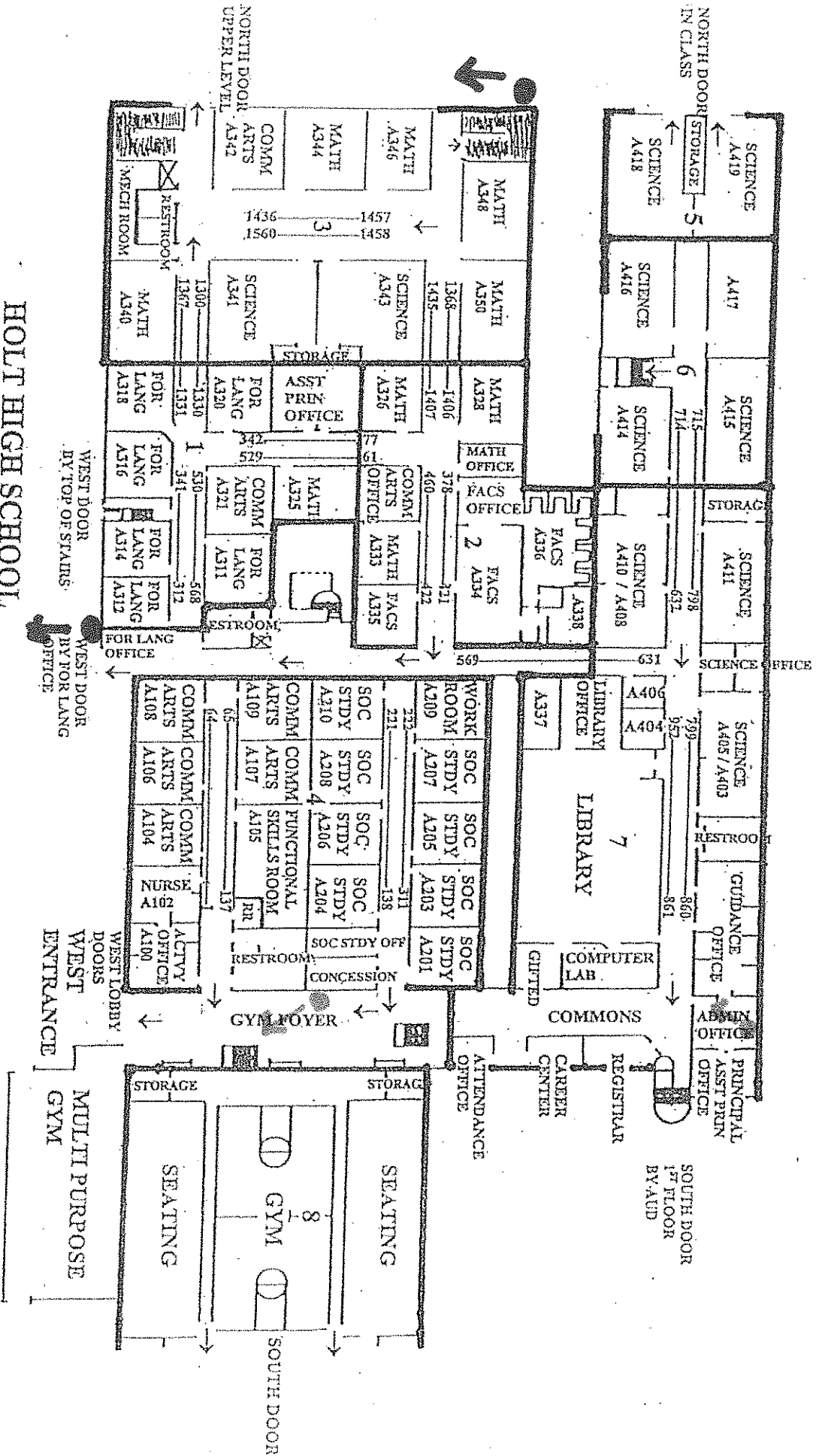
FIRE DRILL PROCEDURE



HHHS
Down



3rd Floor



**HOLT HIGH SCHOOL
UPPER LEVEL**

**FIRE DRILL
PROCEDURE**

Soby Field

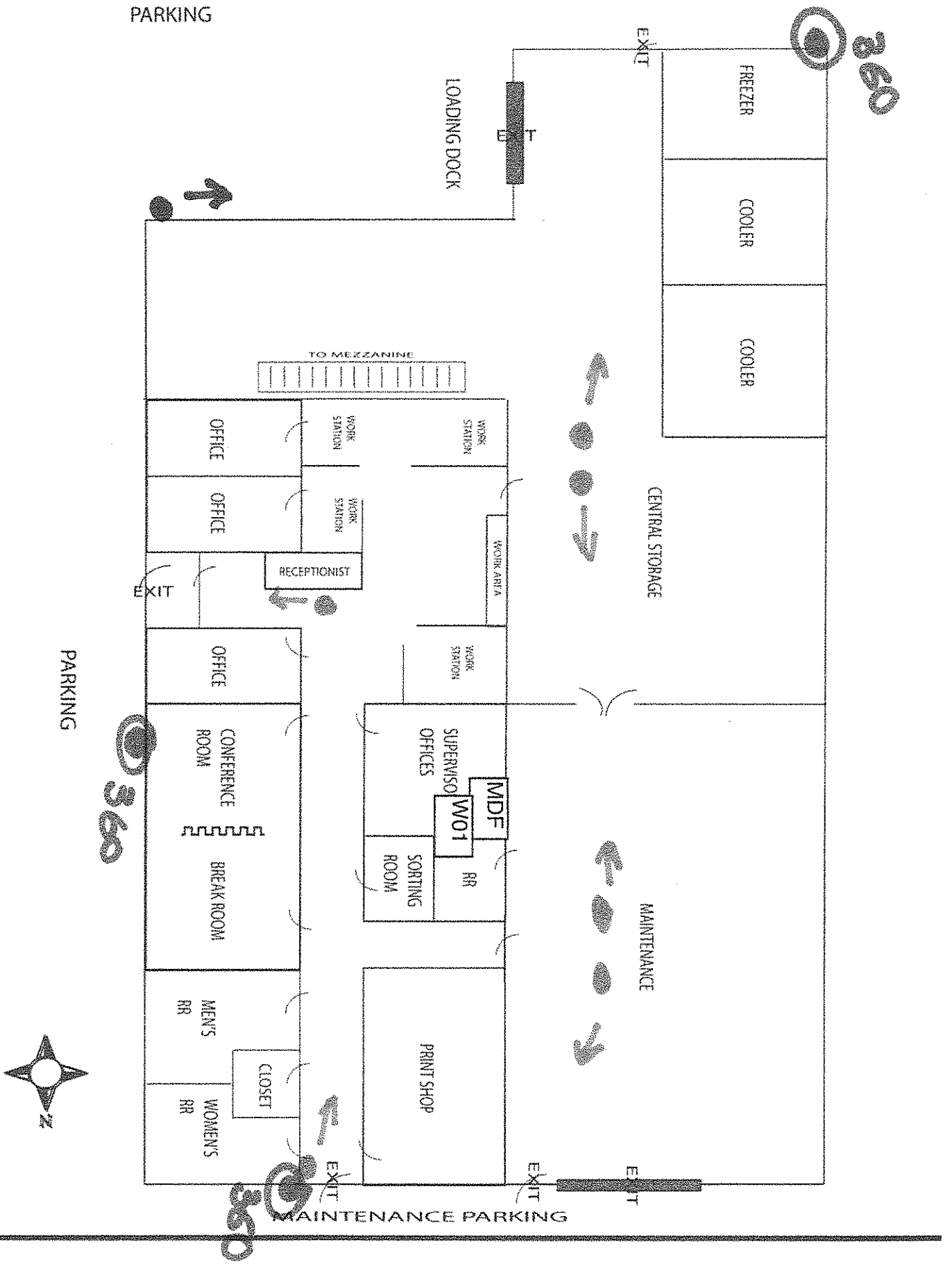
*4115
UP*

SUPPORT SERVICE BUILDING

101 SUPPORT SERVICE DRIVE - WENTZVILLE, MO 63385

PARKING

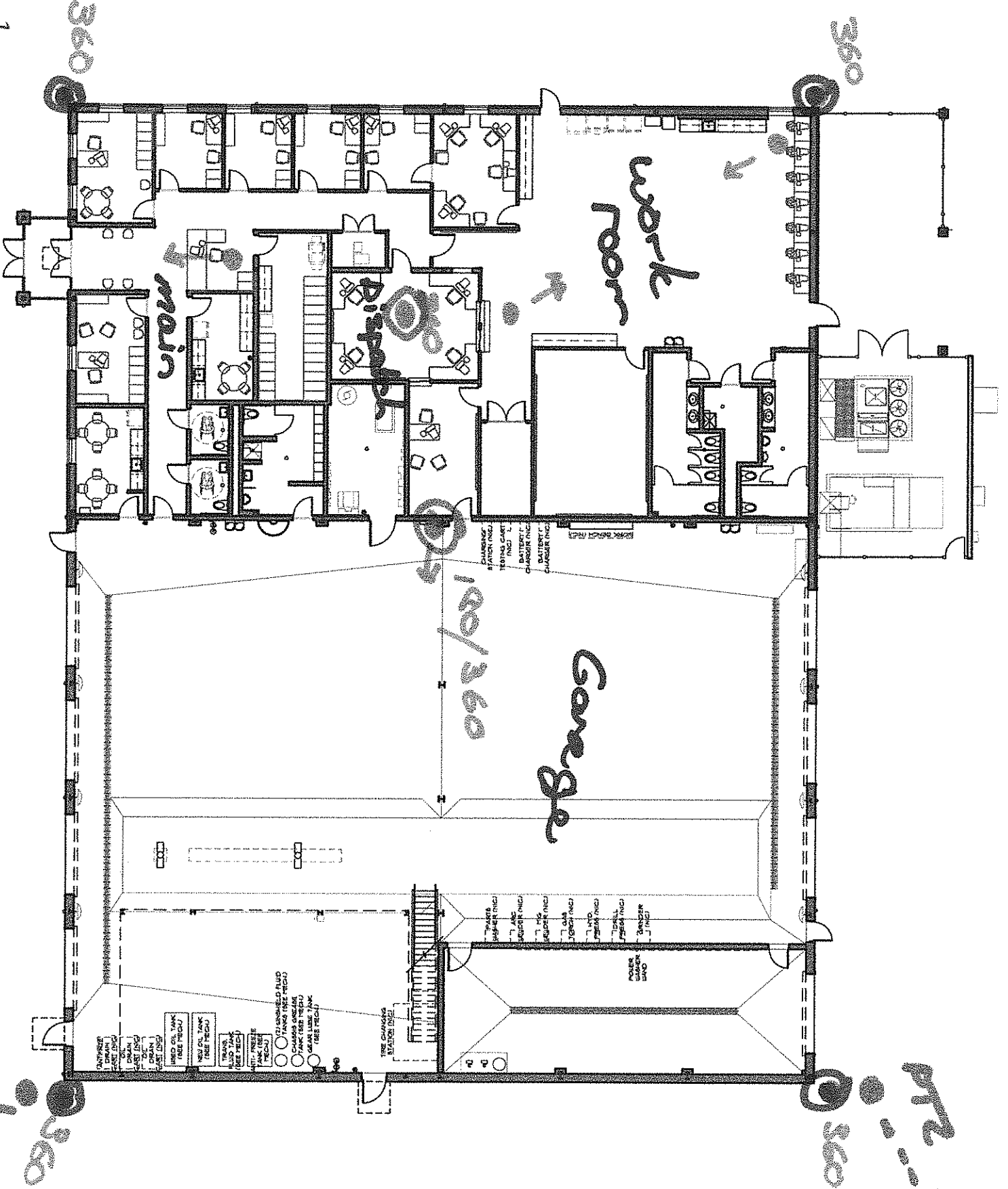
NOT DRAWN TO SCALE



101 SUPPORT SERVICE DRIVE - WENTZVILLE, MO 63385

T R A N K

244 ↑
360

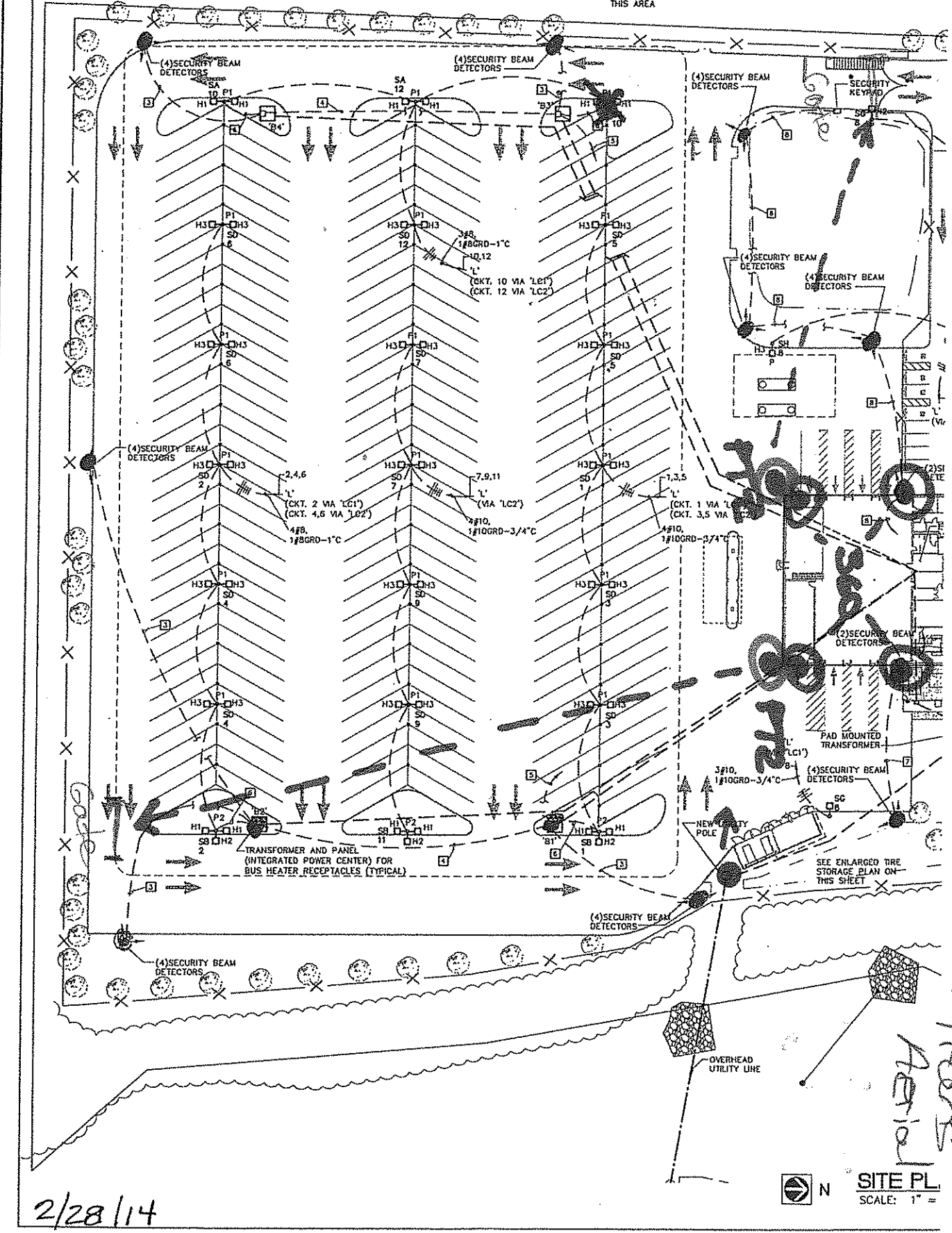


360
244

DUESTER ELECTRIC IS IN HOW BOTTOM SIXTH IN MAIN BEAM
 INTERFACE IS TO CLEAN BEAMS, REALIGN BEAMS AND TE

REP IS JIM WEEMS - 314-406-6249

SEE SHEET E1.1 FOR
 ADDITIONAL WORK IN
 THIS AREA



S:\112721.000\Elec\E1.0-112721.000.dwg 05/04/10 11:34 tfisher

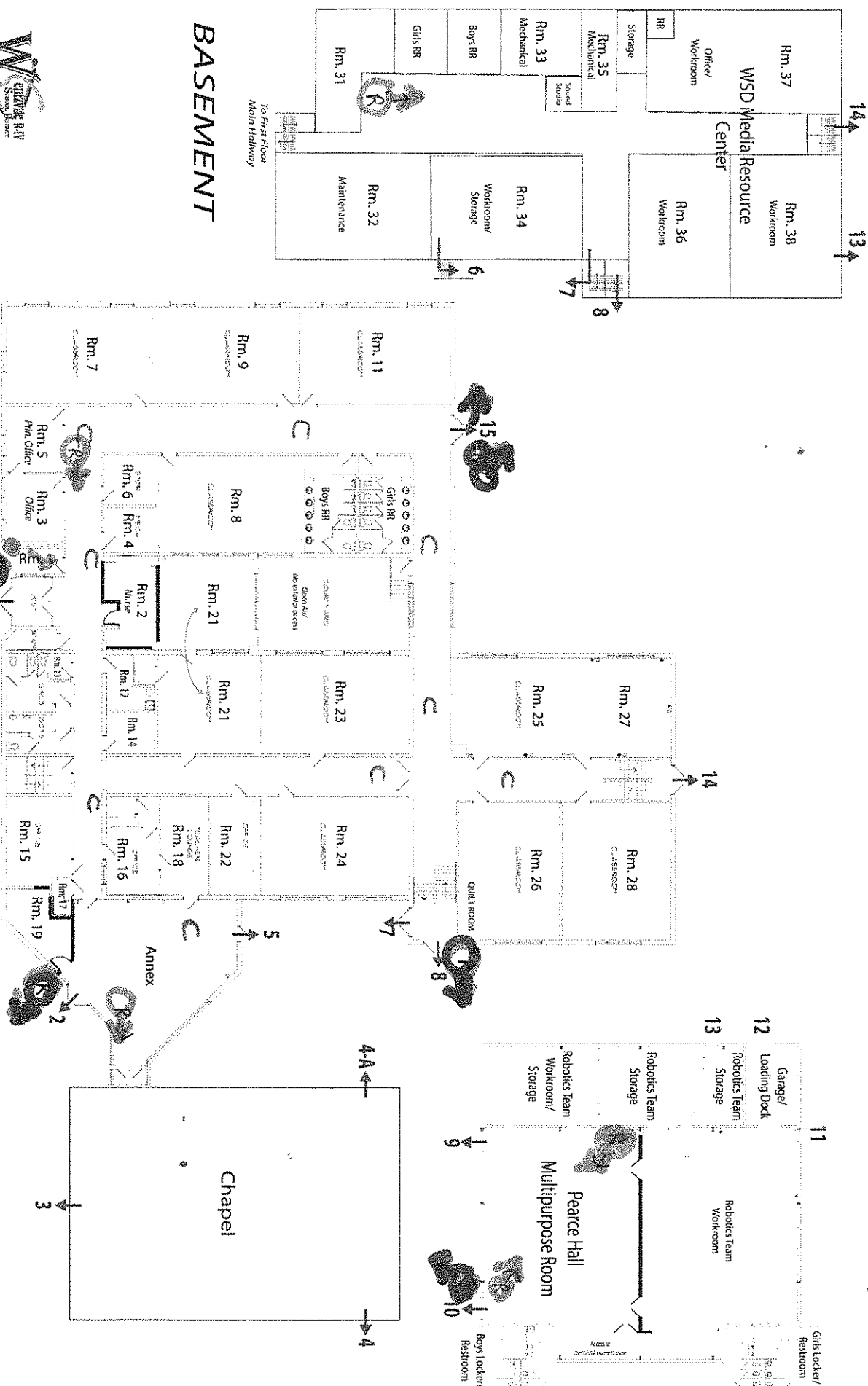
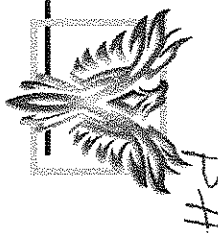
2/28/14

N
 SITE PL
 SCALE: 1" =

1 rows
 Aerial

317 West Pearce Blvd. - Wentzville, MO 63385

PEARCE HALL



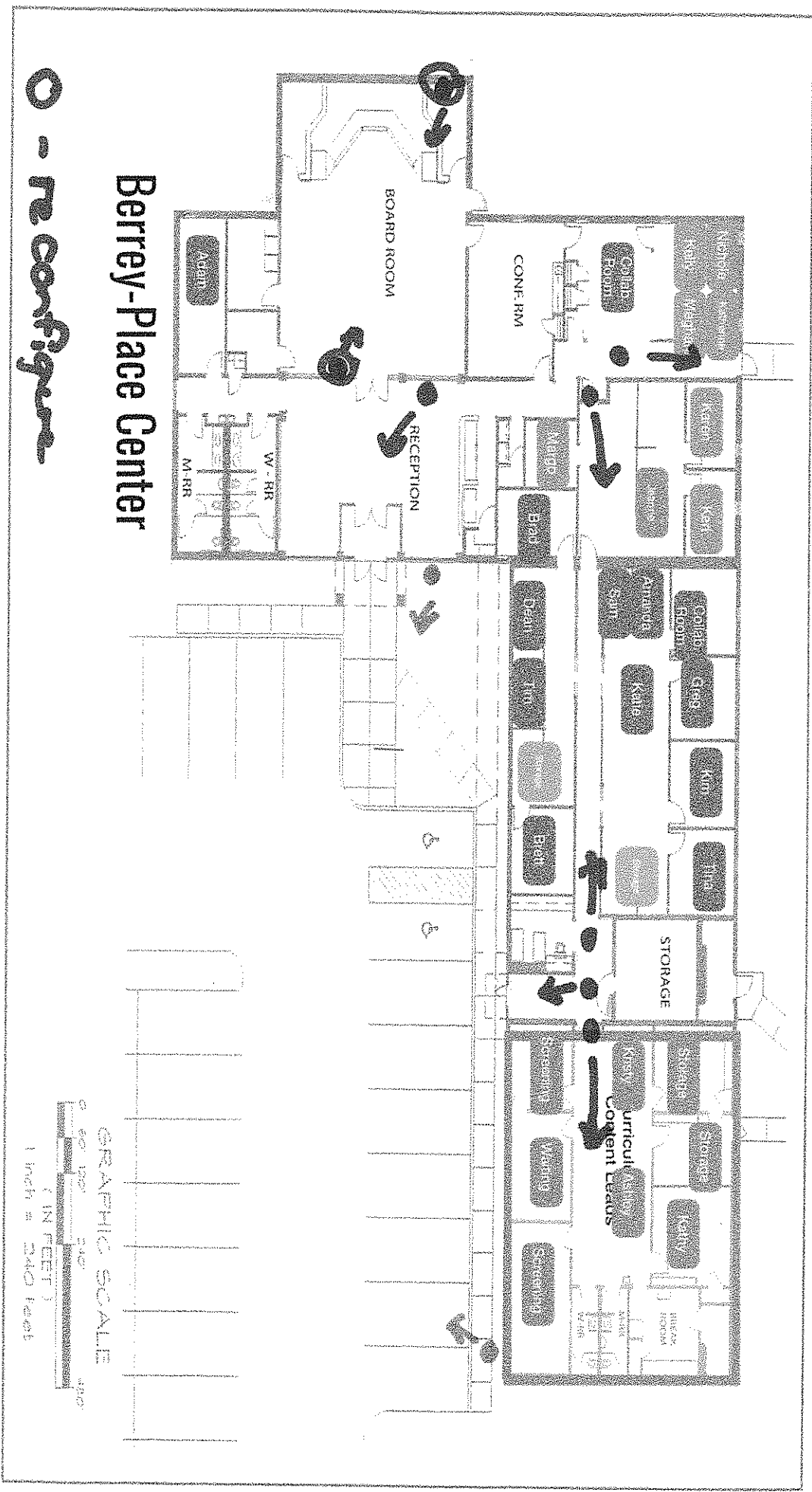
BASEMENT

FIRST FLOOR

BLUE NUMBERS INDICATE EXIT DOOR NUMBERING
 REVIEWED: 4/2013; 12/2013; 8/2017



R = REQUESTED CAMERAS
 C = CURRENT CAMERAS



Berrey-Place Center

O - re configure



Early Childhood Center

Mov & Mod
Plan
3/10
to
30961

