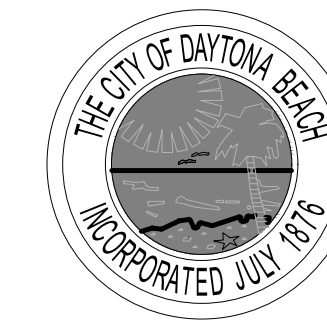


PENINSULA CLUB WINDOW AND DOOR REPLACEMENT

THE CITY OF DAYTONA BEACH



PUBLIC WORKS DEPARTMENT
TECHNICAL SERVICES

950 BELLEVUE AVENUE
DAYTONA BEACH, FL 32114

P 386 671 8610
F 386 957 6404

BRENT COHEN, ARCHITECT
FL LICENSE # AR93854

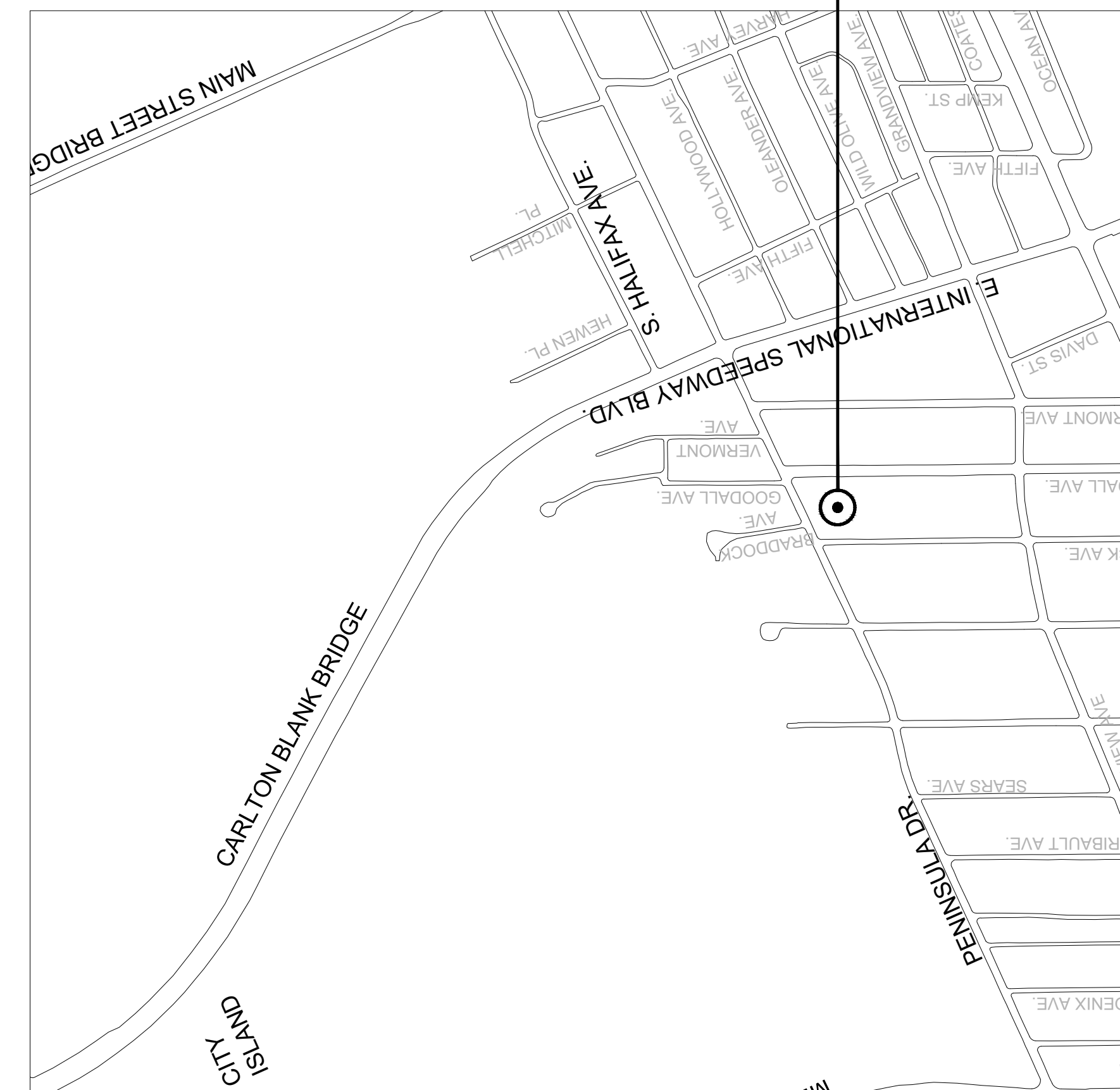
ISSUE	DATE
BID SET	9.27.19

JAMES V. CHISHOLM
ANDREW HOLMES, P.E.
DAVID WALLER
JIM NELSON, P.E.
BRENT COHEN, R.A.

CITY MANAGER
PUBLIC WORKS DIRECTOR
DEPUTY PUBLIC WORKS DIRECTOR
CITY ENGINEER
ARCHITECT

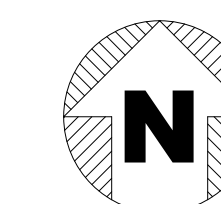
INDEX OF DRAWINGS	SHEET
COVER SHEET	A0.1
ARCHITECTURAL	
FLOOR PLAN + SCHEDULES	A2.1
DETAILS	A9.1

PROJECT LOCATION



VICINITY MAP

SCALE: NTS

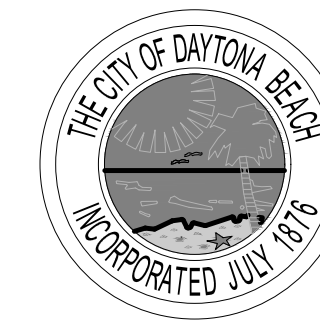


PENINSULA CLUB WINDOWS AND DOORS REPLACEMENT

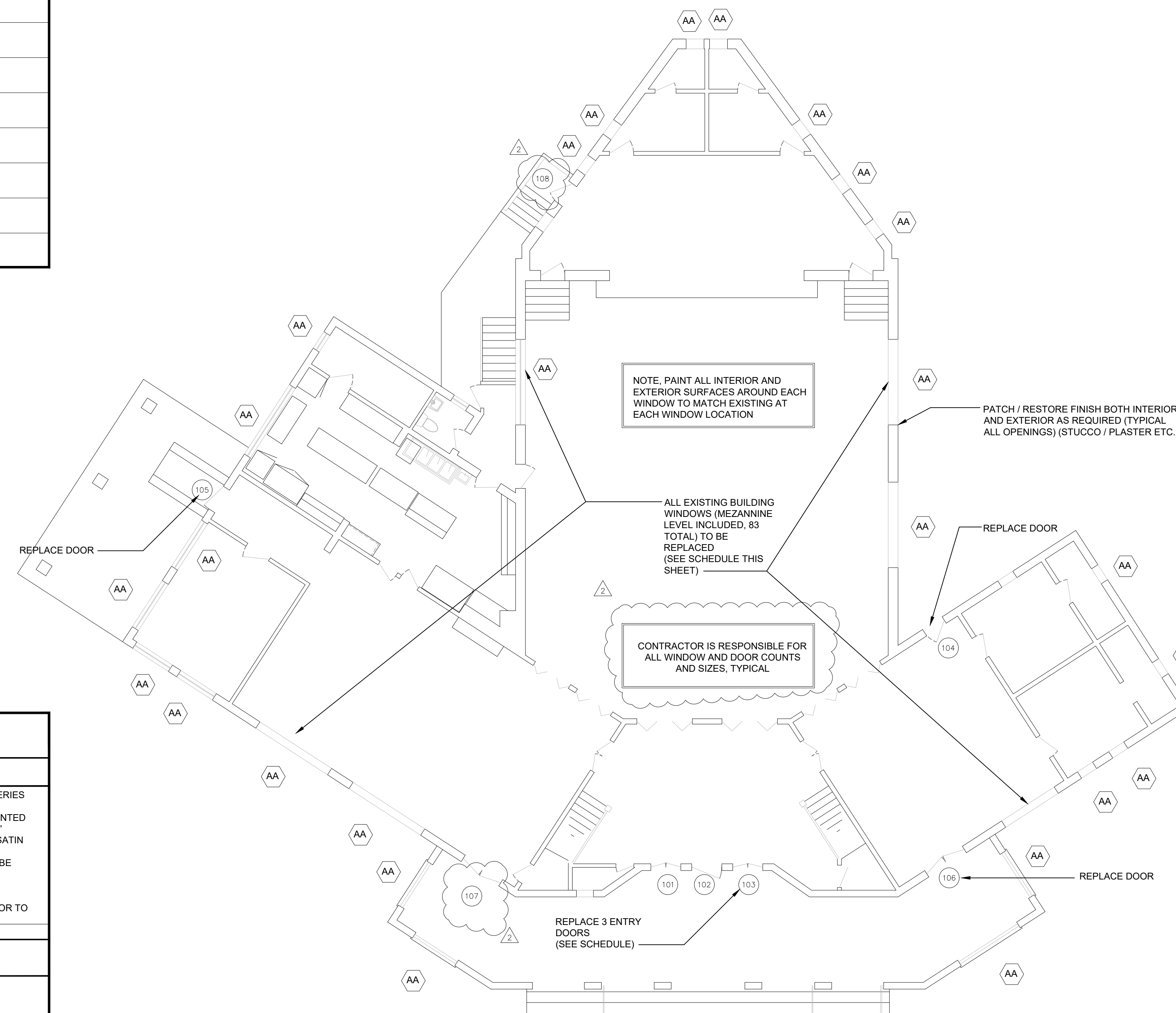
415 SOUTH PENINSULA DRIVE
DAYTONA BEACH FL 32118

SCALE:	AS NOTED
DRAWN:	BCC
CHECKED:	BCC
PROJECT NO:	2019-007

A0.1



MARK						WHEN APPLICABLE	
							DIVIDED LIGHTS TO MATCH EXISTING, SATIN NICKEL NEWBURY DOOR HARDWARE 5 DOOR UNITS. SEE PLAN FOR LOCATIONS
							ALL ROUGH OPENINGS AND CONFIGURATIONS TO BE VERIFIED PRIOR TO WINDOW ORDERING BY CONTRACTOR
101	ALUM. CLAD	(PR) 3'-0"	6'-8"	ALUM. CLAD	WHITE	TBD	SEE GENERAL REMARKS ABOVE
102	ALUM. CLAD	3'-4 1/2"	7'-0"	ALUM. CLAD	WHITE	TBD	SEE GENERAL REMARKS ABOVE
103	ALUM. CLAD	(PR) 3'-0"	6'-8"	ALUM. CLAD	WHITE	TBD	SEE GENERAL REMARKS ABOVE
104	ALUM. CLAD	3'-0"	6'-8"	ALUM. CLAD	WHITE	TBD	SEE GENERAL REMARKS ABOVE
105	ALUM. CLAD	3'-0"	6'-8"	ALUM. CLAD	WHITE	TBD	SEE GENERAL REMARKS ABOVE
106	ALUM. CLAD	(PR) 2'-6"	7'-0"	ALUM. CLAD	WHITE	TBD	SEE GENERAL REMARKS ABOVE
107	ALUM. CLAD	(PR) 2'-6"	7'-0"	ALUM. CLAD	WHITE	TBD	SEE GENERAL REMARKS ABOVE
108	ALUM. CLAD	3'-0"	6'-8"	ALUM. CLAD	WHITE	TBD	SEE GENERAL REMARKS ABOVE



ISSUE	DATE
BID SET	9.27.19
1 ADDENDUM 1	11.5.19
2 ADDENDUM 2	11.8.19

**PENINSULA CLUB
WINDOWS AND
DOORS
REPLACEMENT**

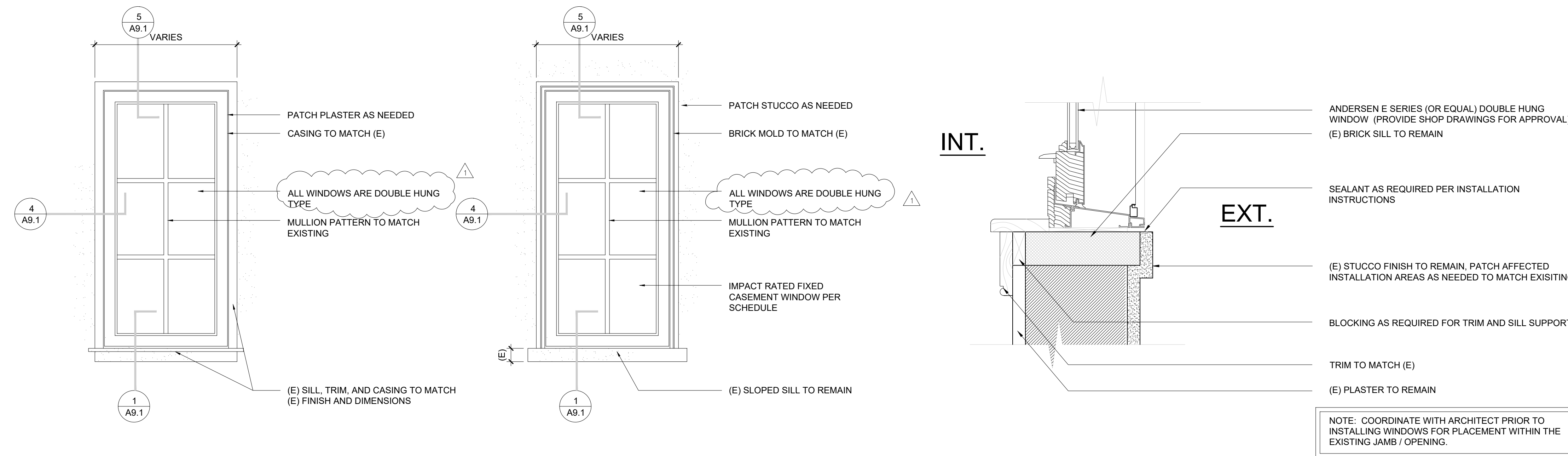
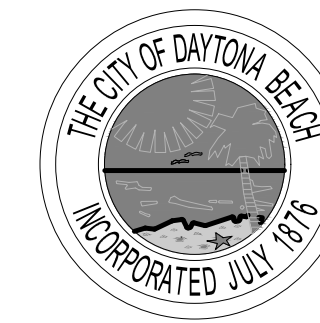
**415 SOUTH
PENINSULA DRIVE
DAYTONA BEACH FL
32118**

WINDOW SCHEDULE						
MARK	FRAME SIZE (U.O.N.)			TYPE	MANUFACTURER	REMARKS
	WIDTH	HEIGHT	MAT'L			
						ANDERSEN E SERIES STORMWATCH SERIES (OR EQUAL), IMPACT RATED, WHITE ALUMINUM CLAD EXTERIOR, WHITE PAINTED PINE INTERIOR, SMART SUN LOW E, 7/8" DIVIDED LIGHTS TO MATCH EXISTING, SATIN NICKEL NEWBURY HARDWARE OR EQUAL, ALL WINDOWS IN BUILDING TO BE REPLACED
AA	VARIES	VARIES	ALUMINUM CLAD	WHITE	WHITE	DOUBLE HUNG ANDERSEN E SERIES OR EQUAL ALL ROUGH OPENINGS AND CONFIGURATIONS TO BE VERIFIED PRIOR TO WINDOW ORDERING BY CONTRACTOR

DOOR / WINDOW SCHEDULE NOTES
1. EXTERIOR DOOR AND WINDOW THICKNESS PER PRODUCT APPROVAL
2. COORDINATE DIMENSIONS SHOWN ABOVE WITH MANUFACTURERS DIMENSION REQUIREMENTS.
3. FACTORY PRIME +PAINT ALL DOORS AND DOOR FRAMES
4. GENERAL CONTRACTOR AND WINDOW / DOOR SUPPLIER TO VERIFY ALL QUANTITIES AND PROVIDE SHOP DRAWINGS PRIOR TO ORDERING / FABRICATION
5. MANUFACTURER TO PROVIDE DESIGN PRESSURES THAT WILL BE VERIFIED BY ARCHITECT

SCALE:	AS NOTED
DRAWN:	BCC
CHECKED:	BCC
PROJECT NO:	2019-007

A2.1



ISSUE	DATE
BID SET	9.27.19
ADDENDUM 1	11.5.19

3 TYPICAL ELEVATION DETAIL (INTERIOR) SCALE: 3/4" = 1'-0"
2 TYPICAL ELEVATION DETAIL (EXTERIOR) SCALE: 3/4" = 1'-0"
1 WINDOW SILL DETAIL (TYPICAL) SCALE: 3" = 1'-0"

PENINSULA CLUB WINDOWS AND DOORS REPLACEMENT

415 SOUTH PENINSULA DRIVE DAYTONA BEACH FL 32118



5 WINDOW HEAD DETAIL (TYPICAL) SCALE: 3" = 1'-0"
4 WINDOW JAMB DETAIL (TYPICAL) SCALE: 3" = 1'-0"

SCALE: AS NOTED
 DRAWN: BCC
 CHECKED: BCC
 PROJECT NO: 2019-007