

Attachment #1

CITY OF MILTON

SR 10/US 90 FROM AVALON BLVD TO HWY 87/ STEWART ST- PLANTED AREAS LANDSCAPE IMPROVEMENTS

PROJECT ID #220364-2-58-01

Scope of Work

- Median 1 – Add (45) Flax Lily 1 gal and (40) Golden Mop 3 gal
 - Median 2 – Remove and Replace Indian Hawthorn with (158) Sunshine Ligustrum 3 gal
 - Median 3 – Add (40) Agapantha 1 gal and (25) Golden Mop 3 gal
 - Median 4 – None
 - Median 5 – Add (61) African Iris 1 gal and (20) Golden Mop 3 gal
 - Median 6 – None
 - Median 7 – None
 - Median 8 – None
 - Median 9 – Remove and Replace Flax Lily with (15) Golden Mop 3 gal
 - Median 10 – None
 - Median 11 – Add (25) Muhly Grass 3 gal
 - Median 12 – None
 - Median 13 – None
 - Median 14 – Add (40) Purple Pixie Lorapetalum 3 gal
 - Median 15 – None
 - Median 16 – None
 - Median 17 – None
 - Median 18 – None
 - Median 19 – None
 - Median 20 – Add (50) Dwarf Yew 3 gal
 - Median 21 – Add (40) Golden Mop 3 gal
 - Median 22 – None
 - Median 23 – Add Annuals and soil at tip of the island (75) 1 gal
- ROW at Churches Chicken – remove Indian Hawthorne and replace with (20) Sunrise Ligustrum 3 gal and (25) Vintage Jade Distylium 3 gal
- ROW at Pep Boys – Replace (3) Crepe Myrtle 16ft and (40) Purple Pixie Lorapetalum 3 gal
- ROW at Capt'n D's – Replace Flax Lily with (25) Blue Rug Juniper 1 gal
- Alt Irrigation – Add 4" bore from Median 23 to south ROW, tie into existing irrigation in Median 23 and stub up for future irrigation in ROW. Mark sleeve locations with 1" pvc and white paint on curb.

LEGEND

SYMBOL DESCRIPTION

— GAS LINE

— SEWER LINE

— WATER LINE

— STREETS

LEGEND

COMMON NAME	BOTANICAL NAME	SPACING	QTY	SIZE
ANNUALS		6" O.C.	75	1 GAL
TREE, DECIDUOUS				
GRAPEWITILE, CORAL PINK	LAGERSTROEMIA 'TUSCARORA'	16 FT O.C.	3	3"
FLOWER, PERENNIAL				
FLAX LILY	DIANELLA TASMANICA 'VARIEGATA'	18" O.C.	45	1 GAL
LILY-OF-THE-NILE	AGAPANATHUS AFRICANUS	18" O.C.	40	1 GAL
AFRICAN IRIS	DIETES IRIIDIODES	18" O.C.	61	1 GAL
SHRUB, EVERGREEN BROADLEAF				
VINTAGE JADE DISTYLUM	DISTYLUM "VINTAGE JADE"	24" O.C.	25	3 GAL
SUNRISE LIGULSTRUM	LIGULSTRUM SINENSE	24" O.C.	178	3 GAL
MUHLY GRASS	MUHLENBERGIA CAPILLARIS	24" O.C.	25	3 GAL
GOLDEN MOP	CHAMAECYPARIS PISIFERA	36" O.C.	140	3 GAL
BLUE RUG JUNIPER	JUNIPERIUS HORIZONTALIS	36" O.C.	25	3 GAL
BLUR GUNDTY LOROPETALUM "PURPLE PIXIE"	LOROPETALUM CHINENSE "PURPLE PIXIE"	24" O.C.	95	3 GAL
DWARF JAPANESE YEW	TAXUS CUSPIDATA	24" O.C.	50	3 GAL

★ CREPE MYRTLES TO BE STANDARDS

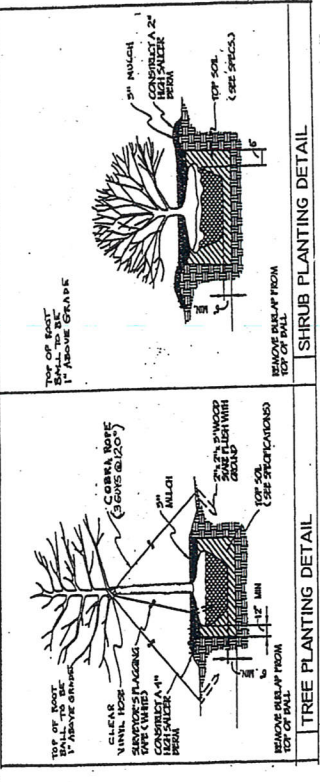
NOTES

1. SURFACE AND SUBSURFACE SURVEY INFORMATION TAKEN FROM HDOT DRAWINGS
2. ALL MEDIAN AREAS THAT WILL BE PLANTED OR SOIDDED WILL BE TREATED WITH GLYPHOSPHATE HERBICIDE PRIOR TO BEGINNING WORK. HERBICIDE TREATMENTS WILL BE REPEATED TWO WEEKS AND FOUR WEEKS AFTER INITIAL TREATMENT. NO OTHER WORK WILL BEGIN UNTIL ACCEPTANCE OF HERBICIDE TREATMENT BY CITY OF MILTON
3. ALL PLANTS WILL MEET OR EXCEED STANDARDS FOR FLORIDA NUMBER 1 GRADE SELECT PLANTS FOR UNIFORMITY OF SIZE AND COLOR. PLANTS PICTURES WILL BE PROVIDED FOR APPROVAL
4. PLANT HOLES WILL BE DUG AS SHOWN BELOW AND ENRICHED WITH BIOPLEX 5-IN-1 COMPLETE PLANTING GRANULES AT MANUFACTURER'S RECOMMENDED RATES. ALL PLANTS ARE TO BE INSTALLED 12 INCHES ABOVE GRADE
5. ALL PLANTING AREAS WILL BE MULCHED WITH 3 INCHES OF SETTLED PINE STRAW AREAS
6. AFTER PLANTING, PRE-EMERGENT HERBICIDE WILL BE APPLIED TO ALL PLANTING AREAS
7. ALL TREES WILL BE STAKED AS SHOWN BELOW
8. LOCATE AND PREVENT DAMAGE TO UNDERGROUND UTILITIES AND ALL OTHER SITE IMPROVEMENTS. CONTRACTOR TO CALL SUNSHINE 811 AT LEAST 3 BUSINESS DAYS PRIOR TO ANY CONSTRUCTION
9. MANY AREAS OF PLANTING ARE LOCATED WITHIN STORMWATER DRAINAGEWAYS GRADIES. THESE AREAS WILL NOT BE SIGNIFICANTLY CHANGED, SINCE THE REMOVAL OF 2 INCHES OF SOIL IN THESE AREAS WILL OFFSET THE IMPORTANCE OF PLANT ROOTBALLS AND DISTRIBUTION OF SOIL EXCAVATED FOR PLANTING. THE FLOW OF WATER IN THESE AREAS MAY BE SLIGHTLY IMPEDED, BUT NOT STOPPED. RESULTING IN MORE WATER PERCOLATING INTO THE SOIL RATHER THAN FLOWING INTO STORM SEWERS. SOME OF THE PINE STRAW MULCH COULD BE DISPLACED BY STORMWATER
10. SOIL ANALYSIS WILL BE PROVIDED TO THE CITY OF MILTON PRIOR TO WORK BEGINNING.
11. ALL EXISTING LIGHTING TO REMAIN.
12. CONTRACTOR TO MAINTAIN SILT FENCE, OR ANY OTHER FORM OF EROSION CONTROL AT ALL TIMES.
13. CONTRACTOR TO MAINTAIN TRAFFIC CONTROL THAT COMPLIES WITH DOT REQUIREMENTS HDOT DESIGN STANDARDS 600 SERIES.
14. THE FOLLOWING UTILITY MEMBERS NEED TO BE CONTACTED DIRECTLY:

220364-2-58-01
Santa Rosa County

State Rd 101/US 90 from Avonlea Blvd (2518) to Hwy 87/Stewart St

Company	Contact Person	Contact Number	Email Address
A&T	Steve Hamner	(813) 888-8300	shamner@at.com
A&T Florida	Barry Powell	(850) 436-1483	bp337@at.com
City of Milton	Joe Cook	(850) 983-5434	jcook@milton.fl.gov
Gulf Power Company	Chad Swails	(850) 425-2446	cswails@gulfpower.com
Mediacom	Tommy Green	(850) 934-2564	tgreen@mediacom.com
Point Baker Water System	Tony Mathis	(850) 673-4545	pmathis@pbws.net
Okaloosa Gas District	Essa Rhibi	(850) 729-4870	erhibi@okalooga.com
Southern Light	Andru Bramblett	(251) 662-1170	abrablett@sl.com
Vericon	Chuck Brunick	(407) 257-6335	chuck.brunick@vericonbusiness.com



Attachment #3

ROADSIDE BEAUTIFICATION ASSISTANCE PROGRAM
PROJECT ID #220364-2-58-01
CITY OF MILTON, FL
STATE RD 10/US 90 FROM AVALON BLVD (281B) TO HWY 87/STEWART ST
MEDIAN LANDSCAPE IMPROVEMENTS



Median 1-23

Write a description for your map.

CITY OF MILTON, FL
STATE RD 10/US 90 FROM AVALON BLVD (281B) TO HWY 87/STEWART ST
SHEET 1 OF 13
NOVEMBER 2nd, 2021

Attachment # 4.



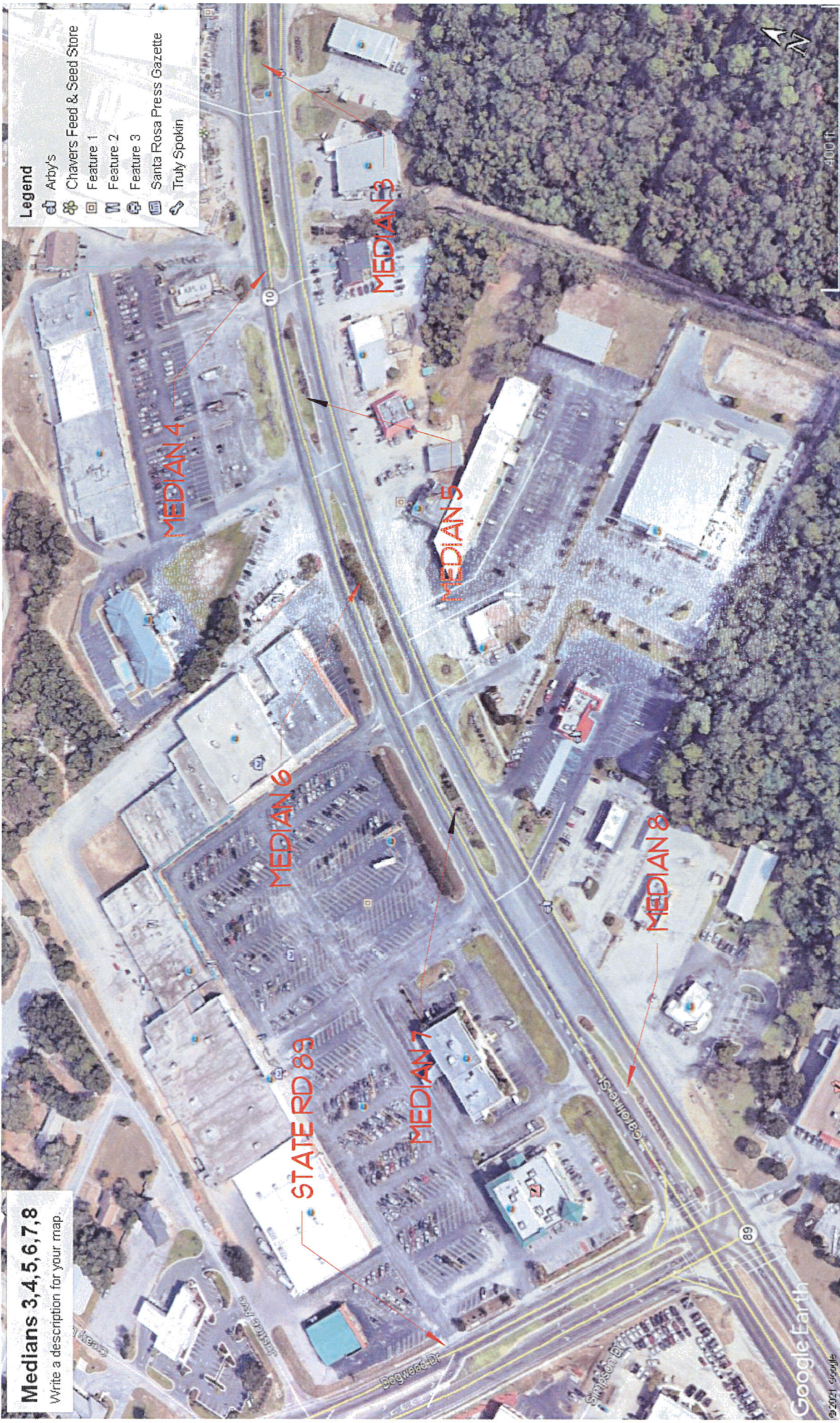
Medians 1, 2, 3

Write a description for your map.

Legend

- Arby's
- Chavers Feed & Seed Store
- Feature 1
- Feature 2
- Feature 3
- Santa Rosa Press Gazette
- Truly Spokin

Attachment #5



Medians 3,4,5,6,7,8
Write a description for your map.

Attachment # 6



Medians 9, 10, 11
Write a description for your map.

Attachment #7



Attachment # 8



Attachment #9



Medians 20,21

Write a description for your map.

- Legend
- Arby's
 - Chavers Feed & Seed Store
 - Feature 1
 - Feature 2
 - Feature 3
 - Santa Rosa Press Gazette
 - Truly Spokin

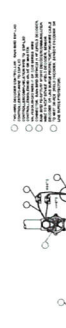


Medians 22, 23

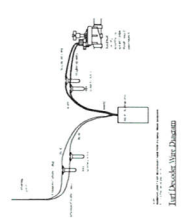
Write a description for your map.



← KMART →



Electric Remote Control Valve With Decoder



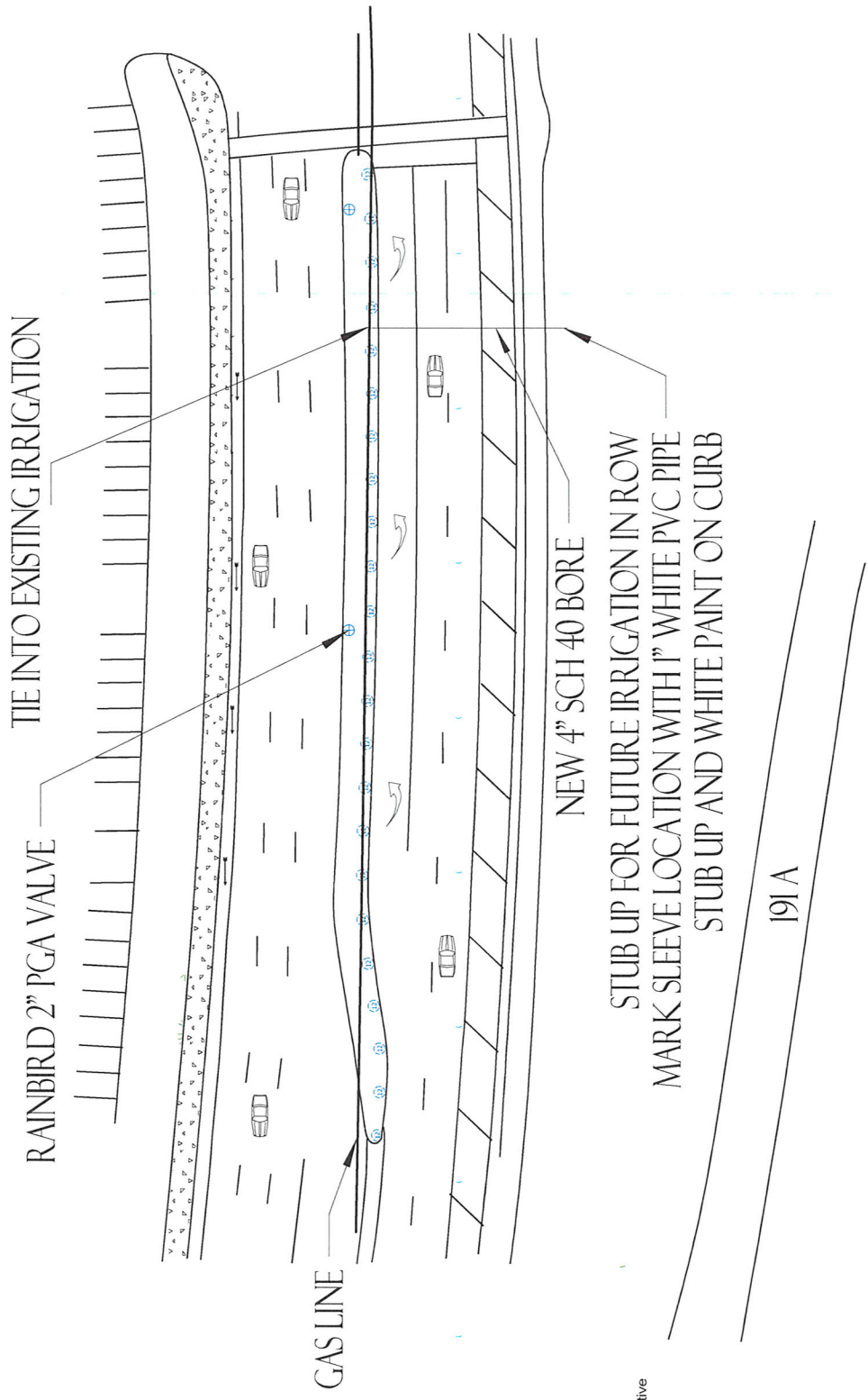
Irrigation Schedule
Symbol: Manufacture/Model/Description

2.5 inch sch 40 mainline

⊕ Rainbird 1812 series 12" pop-up

⊕ 2 inch rainbird pga electric remote valve

New 4" Sch 40 PVC Sleeve by contractor (all bores must meet FDOT requirements) Bores require permitting by FDOT per Administrative Code Chapter 14-46 and must comply with Utility Accommodation Manual 2010



Revision #:	Scale:	Landscape Plan:	Landscape Design by:
Date: 11/2/2021	1" = 40'	Hwy 90 Alt Irrigation	Lee W City of Milton, FL