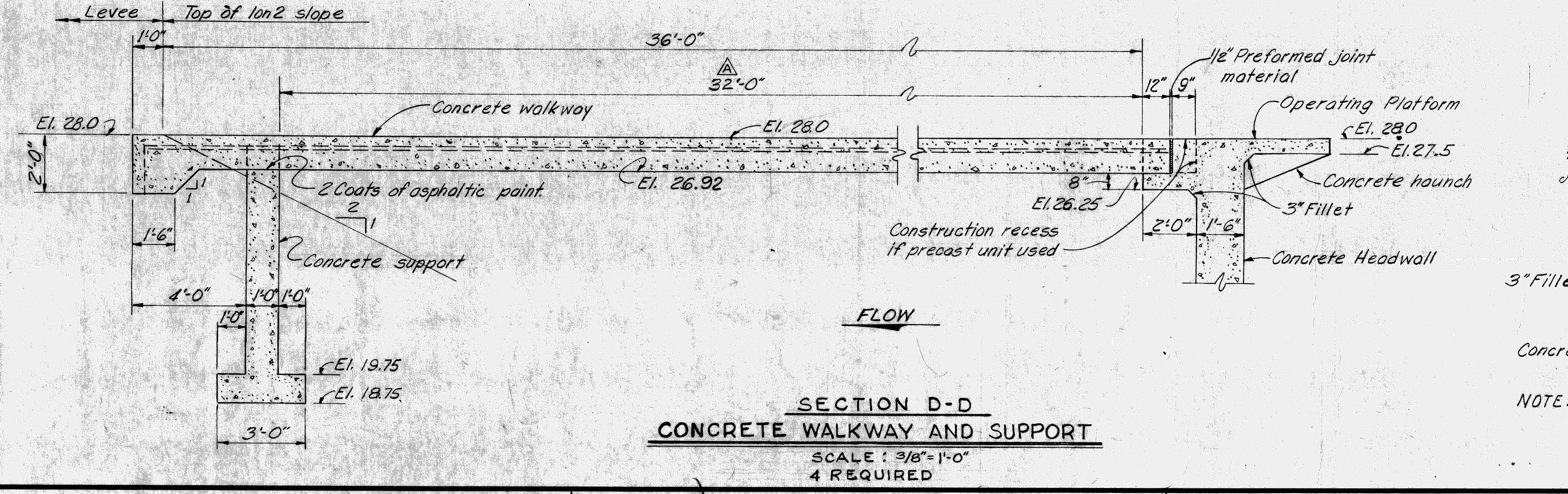
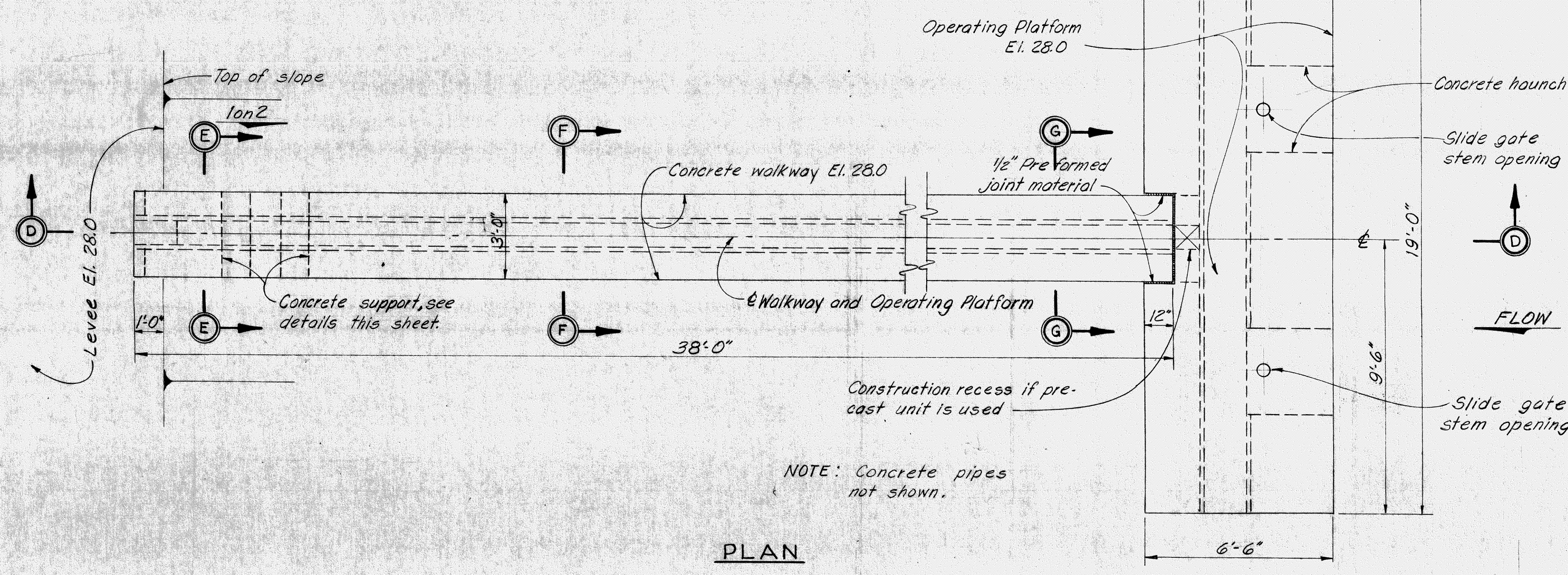
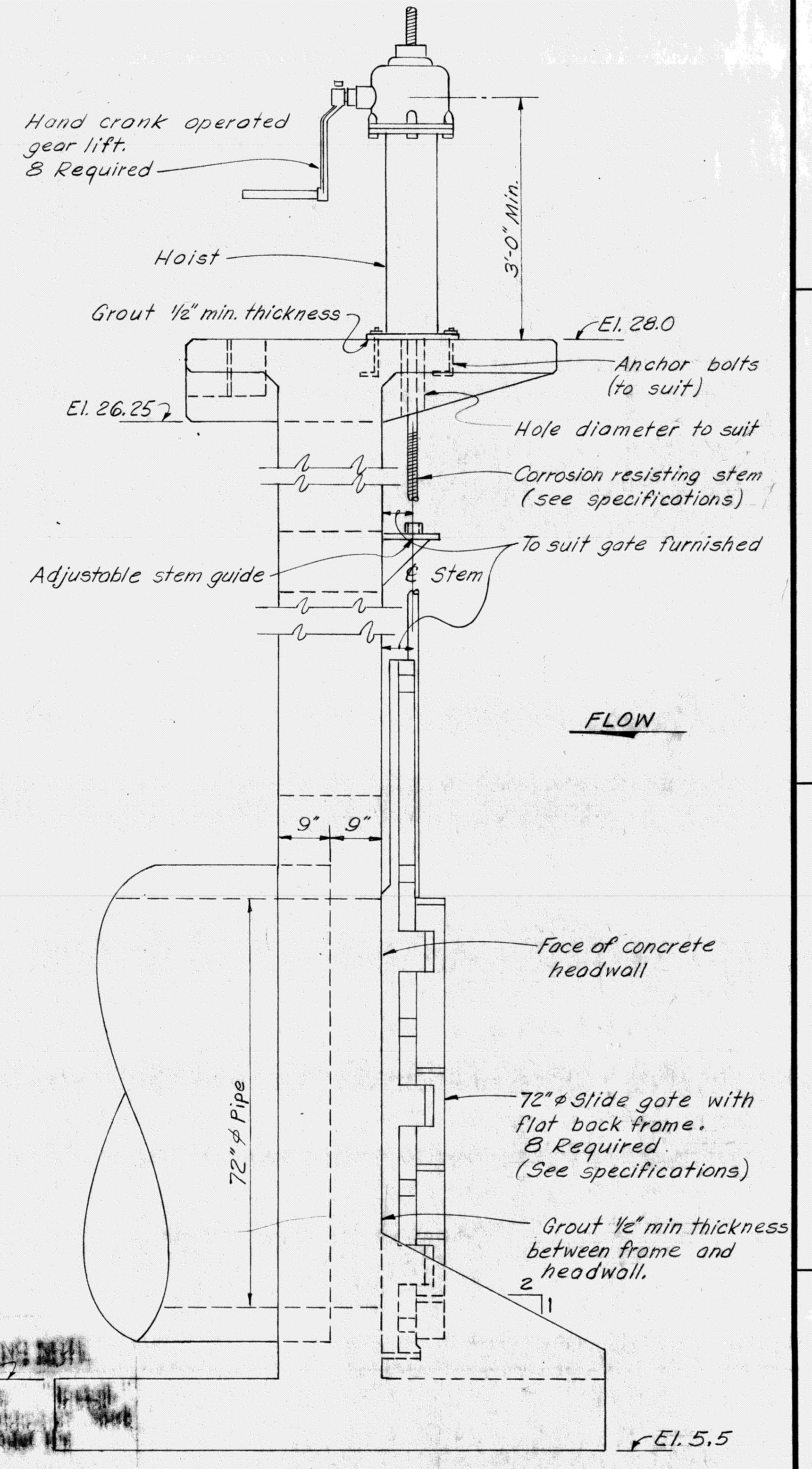
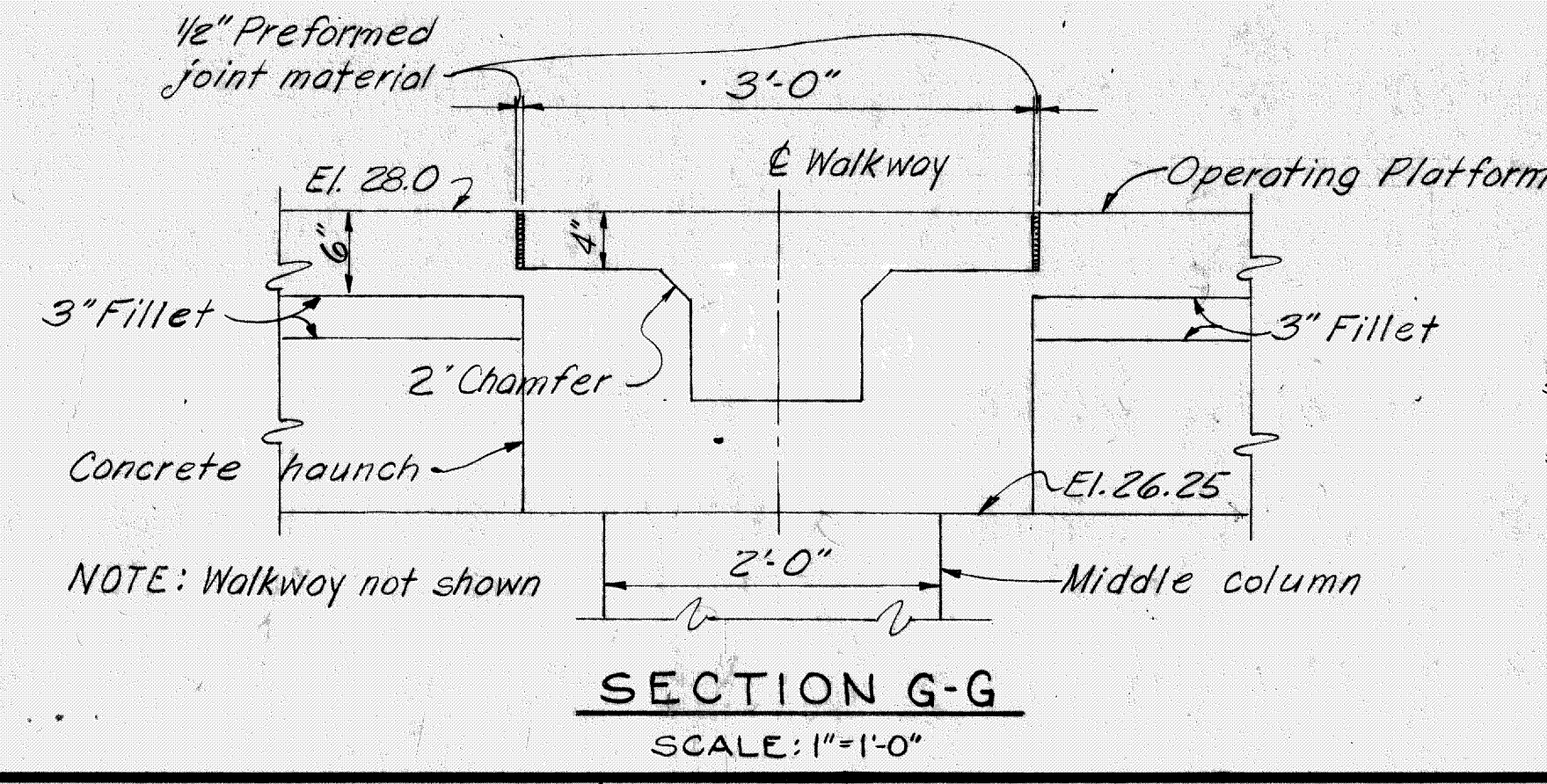
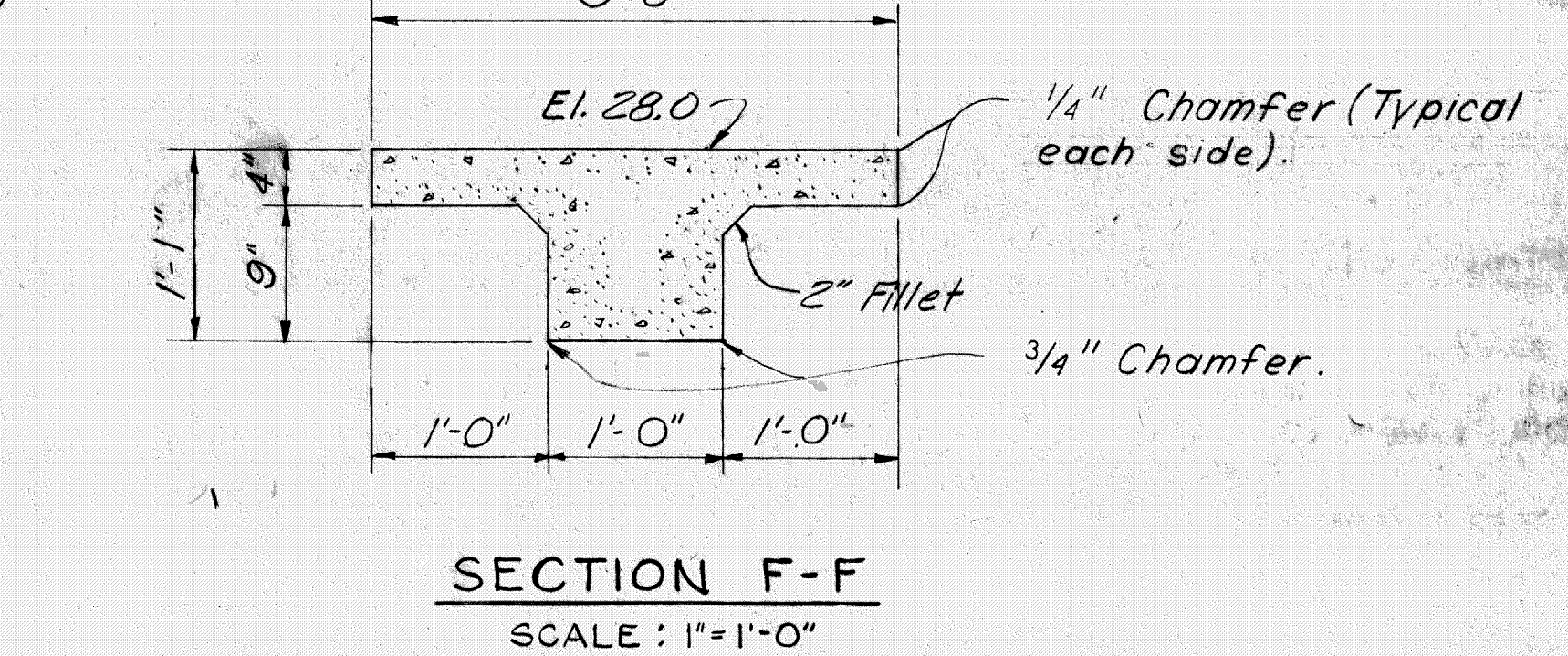
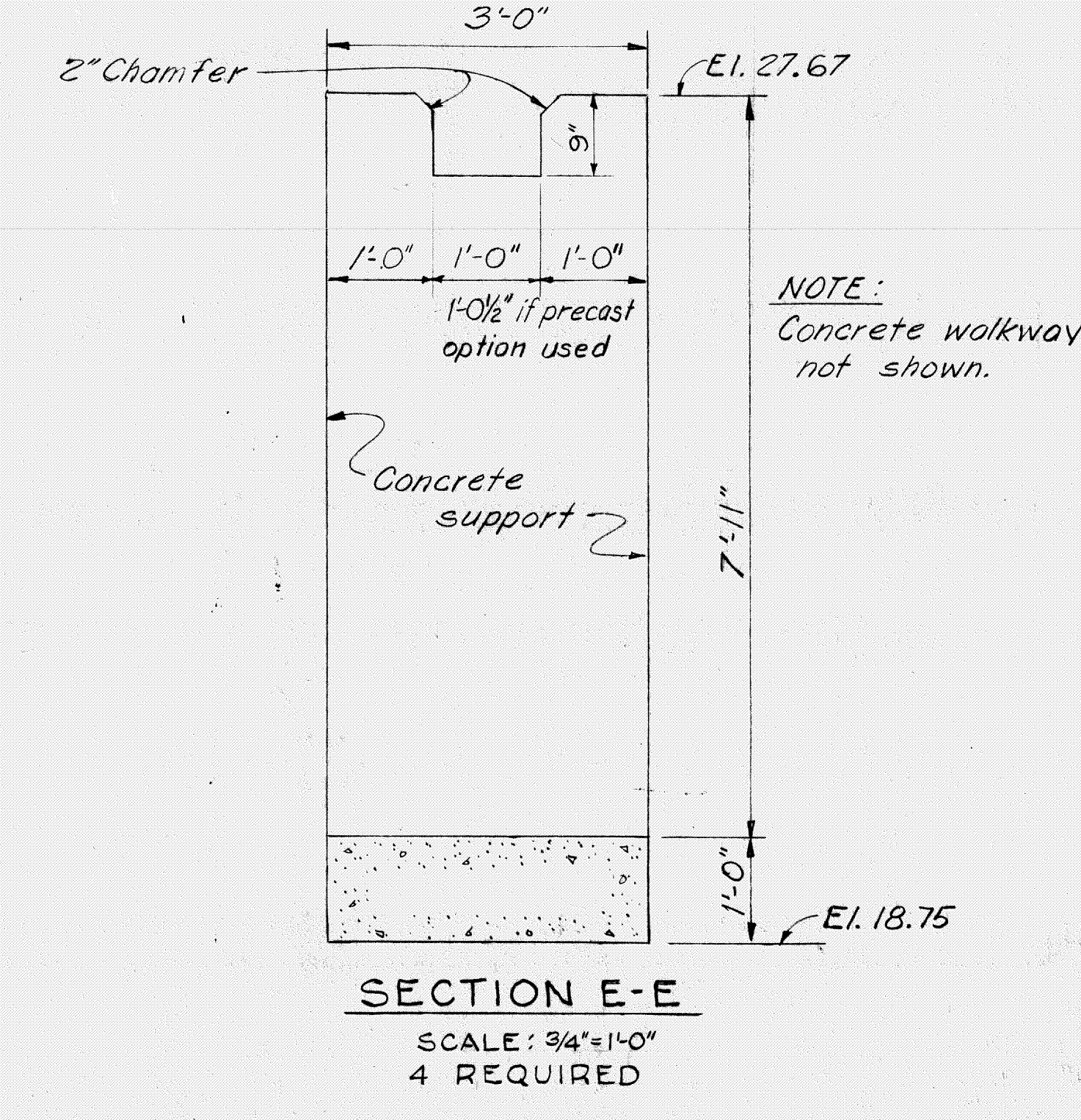
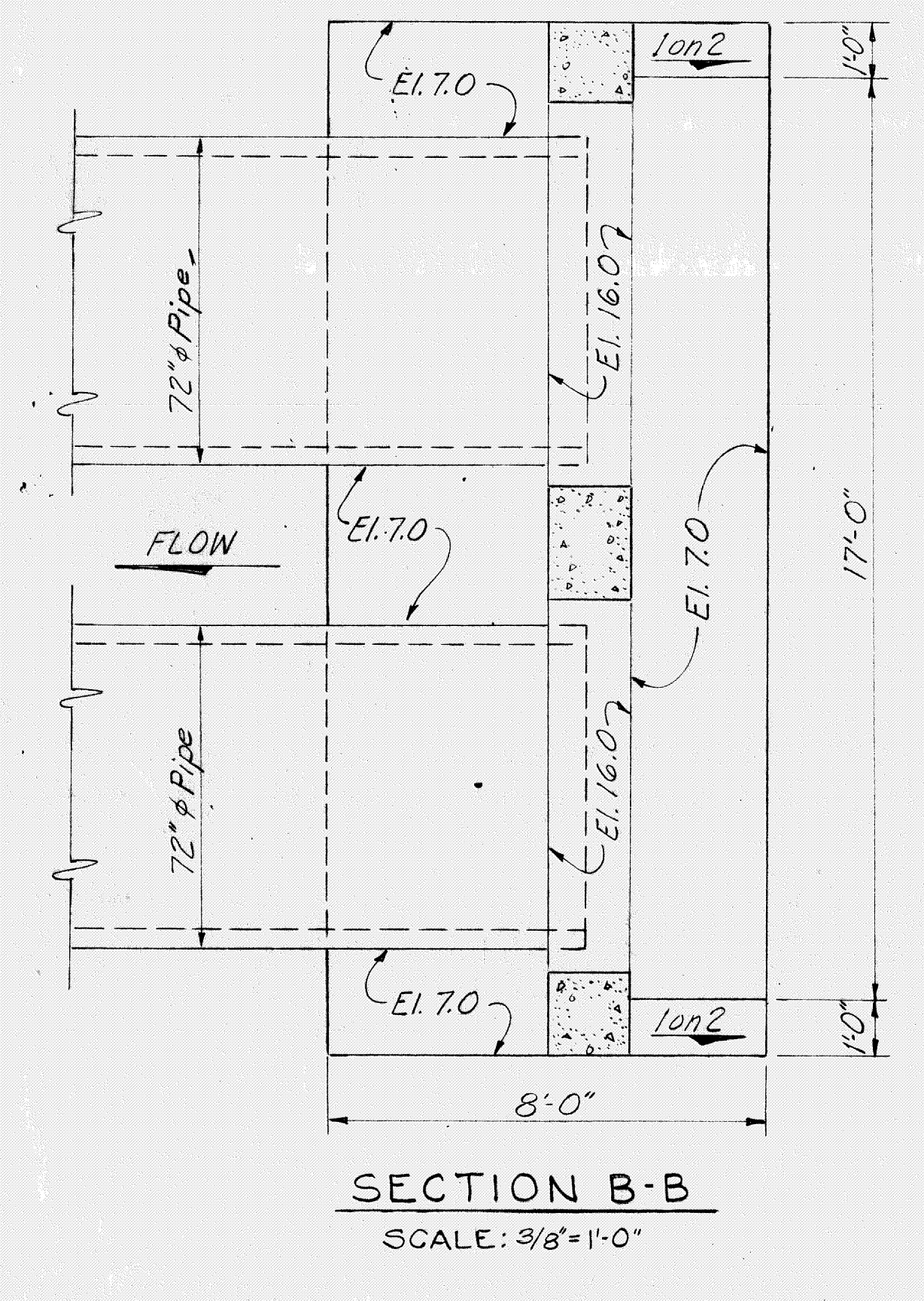
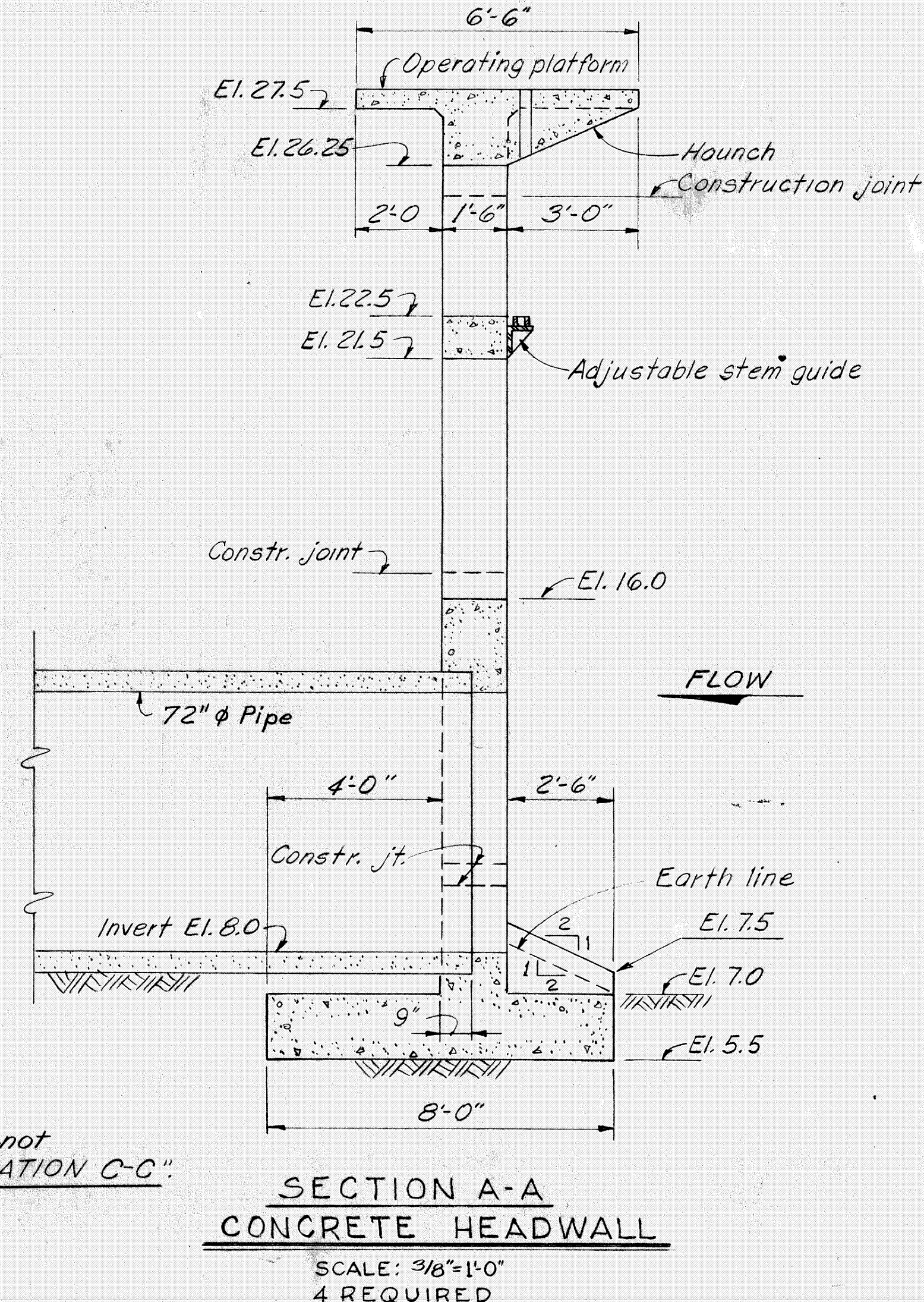
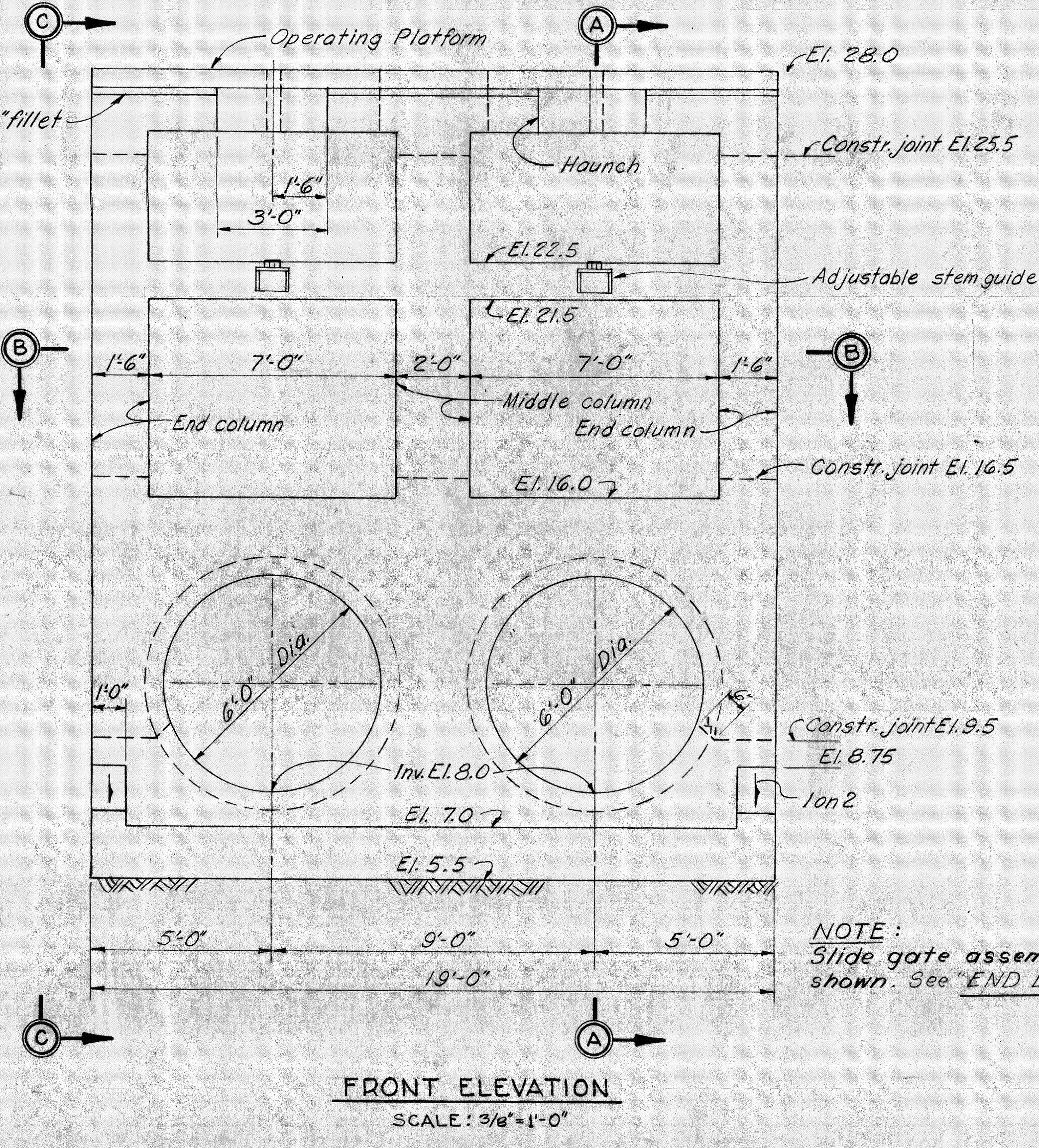


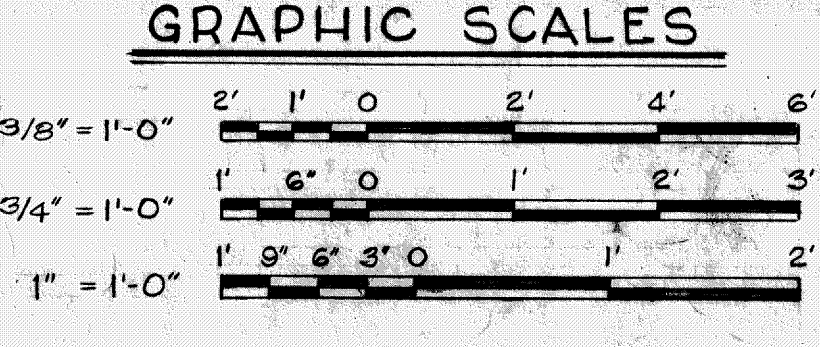
REVISIONS					
NO.	SYM.	ZONE	DESCRIPTION	DATE	APPROVED
1	Δ	B-4	CHANGED 31'-0" TO 32'-0" TO ACQY MOD. TO CONT. 66-109	8-10-66	[Signature]



- NOTES:
- 4 HEADWALLS AND WALKWAYS COMPLETE WITH 8 - 72" Ø SLIDE GATES AND LIFTS ARE REQUIRED. SEE RESPECTIVE SITE PLANS AND GENERAL PLANS FOR LOCATIONS AND EARTHWORK TO BE PERFORMED.
 - FOR "GENERAL MASONRY AND DESIGN NOTES" SEE SHEET NO. 1

RECORD DRAWING NOTE
"Shall be," "Provide," "Install," "Remove," etc., indicates work was accomplished under the contract.

AS BUILT



U. S. ARMY ENGINEER DISTRICT, JACKSONVILLE
CORPS OF ENGINEERS
JACKSONVILLE, FLORIDA

CENTRAL AND SOUTHERN FLORIDA PROJECT
FOR FLOOD CONTROL AND OTHER PURPOSES

CANAL 54, SECTION 2
GATED CULVERT STRUCTURES
MASONRY PLAN AND SECTIONS

DATE: 28 APRIL 1966
SCALE: AS SHOWN
SHEET 76 OF 72