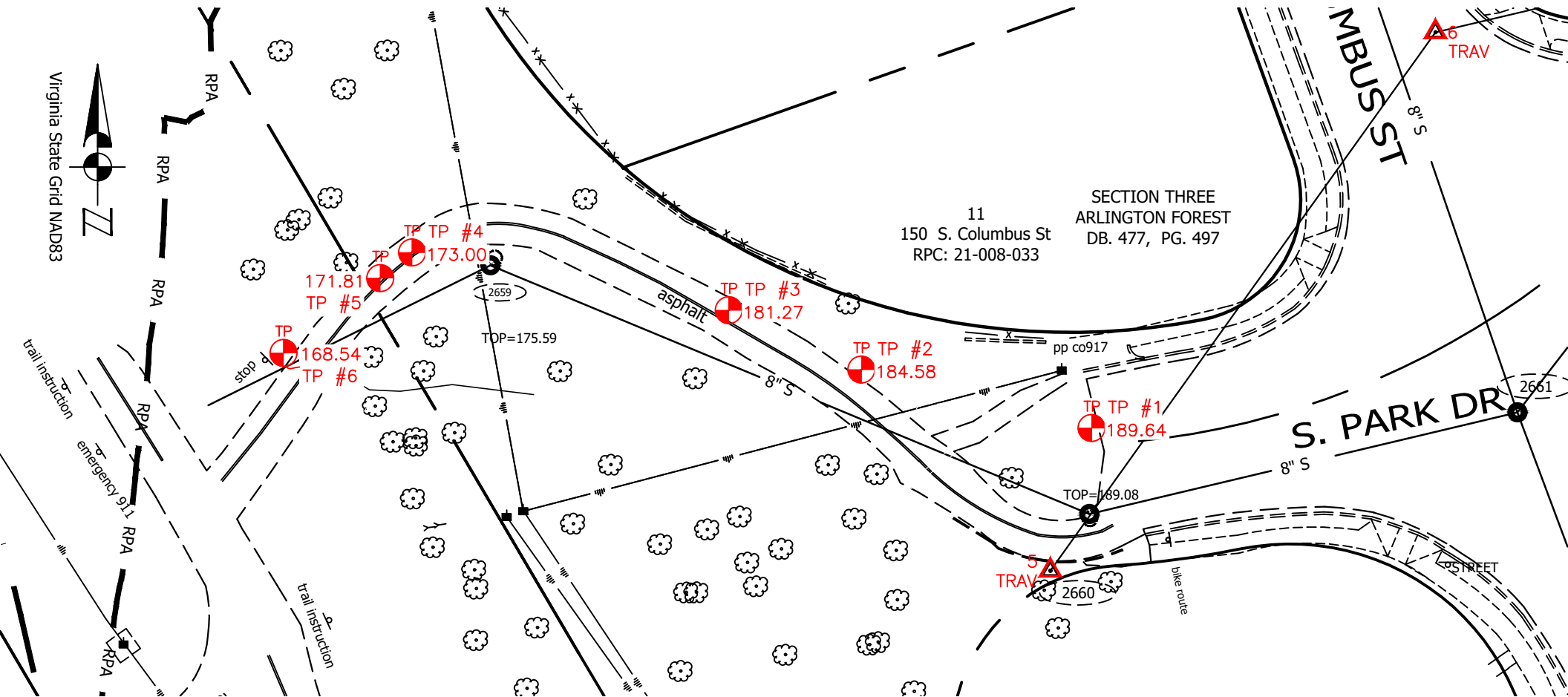
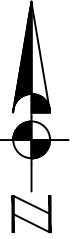


S PARK DR TEST HOLES



Virginia State Grid NAD83



TEST HOLE FORM

44200 WAXPOOL RD, SUITE 127 ASHBURN, VA 20147 | 703.378.0100 | WWW.MIDATLANTICLOCATING.COM

Project: M-0618-0201-S44D ADD (Sparrow Pond)	Prepared By: Bryson Ricks	Date: 2021-09-27
City: Arlington	State: VA	Test Hole: 1 of

General Location: S. Park Dr.

UTILITY INFORMATION

Utility Size: 12" Per Record	Material: Ductile Iron	Good Condition: YES
Utility Type: Water Line		Utility Owner: Arlington County

ADDITIONAL UTILITY INFORMATION

Utility Size:	Material:	See Test Hole No.:
Utility Type: None		Utility Owner:

SITE CONDITIONS

Field Condition: Grass Area	Pavement thickness: NA
Ground Condition: Brown Soil	

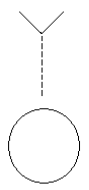
FIRST & SECOND BENCHMARK INFORMATION

1st Elevation:	1st Benchmark Description:
BM Check:	
2nd Elevation:	2nd Benchmark Description:
Elevation Datum:	

FIELD MARKER INFORMATION

Type set: Chiseled "X"	Elevation: 189.64'
Offset/Direction: Chiseled "X" is set C/L of the Utility.	

PROFILE VIEW

	Top of utility field measurement: <u>5.32'</u>	Elevation: <u>184.32'</u>
	Bottom of utility field measurement: <u>None</u>	Elevation: <u>None</u>

Facing: West	Utility Width/Spacing:
---------------------	-------------------------------

PLAN VIEW

COORDINATES

	Northing: 7000528.8813	Easting: 11876517.5045
	<u>COMMENTS/NOTES</u>	

TEST HOLE FORM

44200 WAXPOOL RD, SUITE 127 ASHBURN, VA 20147 | 703.378.0100 | WWW.MIDATLANTICLOCATING.COM

Project: M-0618-0201-S44D ADD (Sparrow Pond)	Prepared By: Bryson Ricks	Date: 2021-09-27
City: Arlington	State: VA	Test Hole: 2 of

General Location: S. Park Dr.

UTILITY INFORMATION

Utility Size: 12" Per Record	Material: Ductile Iron	Good Condition: YES
Utility Type: Water Line		Utility Owner: Arlington County

ADDITIONAL UTILITY INFORMATION

Utility Size:	Material:	See Test Hole No.:
Utility Type: None		Utility Owner:

SITE CONDITIONS

Field Condition: Grass Area	Pavement thickness: NA
Ground Condition: Brown Soil	

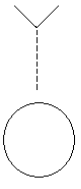
FIRST & SECOND BENCHMARK INFORMATION

1st Elevation:	1st Benchmark Description:
BM Check:	
2nd Elevation:	2nd Benchmark Description:
Elevation Datum:	

FIELD MARKER INFORMATION

Type set: Wooden Hub	Elevation: 184.58'
Offset/Direction: Hub is set C/L of the Utility.	

PROFILE VIEW

	Top of utility field measurement: <u>4.98'</u>	Elevation: <u>179.60'</u>
	Bottom of utility field measurement: <u>None</u>	Elevation: <u>None</u>

Facing: West	Utility Width/Spacing:
---------------------	-------------------------------

PLAN VIEW	COORDINATES
------------------	--------------------

	Northing: 7000540.8474	Easting: 11876470.3272
	<u>COMMENTS/NOTES</u>	



TEST HOLE FORM



44200 WAXPOOL RD, SUITE 127 ASHBURN, VA 20147 | 703.378.0100 | WWW.MIDATLANTICLOCATING.COM

Project: M-0618-0201-S44D ADD (Sparrow Pond) **Prepared By:** Bryson Ricks **Date:** 2021-09-27

City: Arlington **State:** VA **Test Hole:** 3 of

General Location: S. Park Dr.

UTILITY INFORMATION

Utility Size: 12" Per Record **Material:** Ductile Iron **Good Condition:** YES

Utility Type: Water Line **Utility Owner:** Arlington County

ADDITIONAL UTILITY INFORMATION

Utility Size: **Material:** **See Test Hole No.:**

Utility Type: None **Utility Owner:**

SITE CONDITIONS

Field Condition: Asphalt **Pavement thickness:** 6"

Ground Condition: Brown Soil

FIRST & SECOND BENCHMARK INFORMATION

1st Elevation: **1st Benchmark Description:**

BM Check:

2nd Elevation: **2nd Benchmark Description:**

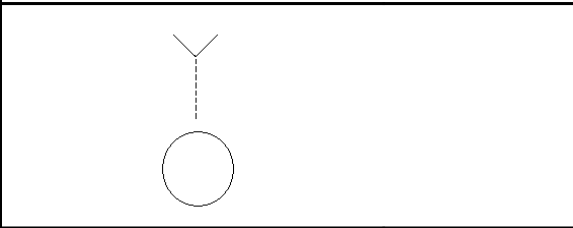
Elevation Datum:

FIELD MARKER INFORMATION

Type set: Mag Nail **Elevation:** 181.27'

Offset/Direction: Nail is set C/L of the Utility.

PROFILE VIEW



Top of utility field measurement: 4.79' **Elevation:** 176.48'

Bottom of utility field measurement: None **Elevation:** None

Facing: West **Utility Width/Spacing:**

PLAN VIEW

COORDINATES

Northing: 7000553.0165 **Easting:** 11876443.1561

COMMENTS/NOTES

TEST HOLE FORM

44200 WAXPOOL RD, SUITE 127 ASHBURN, VA 20147 | 703.378.0100 | WWW.MIDATLANTICLOCATING.COM

Project: M-0618-0201-S44D ADD (Sparrow Pond)	Prepared By: Bryson Ricks	Date: 2021-09-27
City: Arlington	State: VA	Test Hole: 4 of

General Location: S. Park Dr.

UTILITY INFORMATION

Utility Size: 12" Per Record	Material: Ductile Iron	Good Condition: YES
Utility Type: Water Line		Utility Owner: Arlington County

ADDITIONAL UTILITY INFORMATION

Utility Size:	Material:	See Test Hole No.:
Utility Type: None		Utility Owner:

SITE CONDITIONS

Field Condition: Asphalt	Pavement thickness: 6"
Ground Condition: Brown Soil	

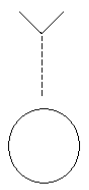
FIRST & SECOND BENCHMARK INFORMATION

1st Elevation:	1st Benchmark Description:
BM Check:	
2nd Elevation:	2nd Benchmark Description:
Elevation Datum:	

FIELD MARKER INFORMATION

Type set: Mag Nail	Elevation: 173.00'
Offset/Direction: Nail is set C/L of the Utility.	

PROFILE VIEW

	Top of utility field measurement: <u>6.02'</u>	Elevation: <u>166.98'</u>
	Bottom of utility field measurement: <u>None</u>	Elevation: <u>None</u>

Facing: West	Utility Width/Spacing:
---------------------	-------------------------------

PLAN VIEW

COORDINATES

Northing: 7000564.8628	Easting: 11876378.2606
COMMENTS/NOTES	

TEST HOLE FORM

44200 WAXPOOL RD, SUITE 127 ASHBURN, VA 20147 | 703.378.0100 | WWW.MIDATLANTICLOCATING.COM

Project: M-0618-0201-S44D ADD (Sparrow Pond)	Prepared By: Bryson Ricks	Date: 2021-09-27
City: Arlington	State: VA	Test Hole: 5 of

General Location: S. Park Dr.

UTILITY INFORMATION

Utility Size: 12" Per Record	Material: Ductile Iron	Good Condition: YES
Utility Type: Water Line		Utility Owner: Arlington County

ADDITIONAL UTILITY INFORMATION

Utility Size:	Material:	See Test Hole No.:
Utility Type: None		Utility Owner:

SITE CONDITIONS

Field Condition: Asphalt	Pavement thickness: 7"
Ground Condition: Brown Soil	

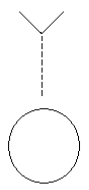
FIRST & SECOND BENCHMARK INFORMATION

1st Elevation:	1st Benchmark Description:
BM Check:	
2nd Elevation:	2nd Benchmark Description:
Elevation Datum:	

FIELD MARKER INFORMATION

Type set: Mag Nail	Elevation: 171.81'
Offset/Direction: Nail is set C/L of the Utility.	

PROFILE VIEW

	Top of utility field measurement: <u>5.83'</u>	Elevation: <u>165.98'</u>
	Bottom of utility field measurement: <u>None</u>	Elevation: <u>None</u>

Facing: West	Utility Width/Spacing:
---------------------	-------------------------------

PLAN VIEW

PLAN VIEW	COORDINATES
	Northing: 7000559.6193 Easting: 11876371.7306
	COMMENTS/NOTES

TEST HOLE FORM

44200 WAXPOOL RD, SUITE 127 ASHBURN, VA 20147 | 703.378.0100 | WWW.MIDATLANTICLOCATING.COM

Project: M-0618-0201-S44D ADD (Sparrow Pond)	Prepared By: Bryson Ricks	Date: 2021-09-27
City: Arlington	State: VA	Test Hole: 6 of

General Location: S. Park Dr.

UTILITY INFORMATION

Utility Size: 12" Per Record	Material: Ductile Iron	Good Condition: YES
Utility Type: Water Line		Utility Owner: Arlington County

ADDITIONAL UTILITY INFORMATION

Utility Size:	Material:	See Test Hole No.:
Utility Type: None		Utility Owner:

SITE CONDITIONS

Field Condition: Grass Area	Pavement thickness: NA
Ground Condition: Brown Soil	

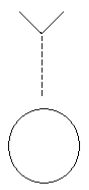
FIRST & SECOND BENCHMARK INFORMATION

1st Elevation:	1st Benchmark Description:
BM Check:	
2nd Elevation:	2nd Benchmark Description:
Elevation Datum:	

FIELD MARKER INFORMATION

Type set: Wooden Hub	Elevation: 168.54'
Offset/Direction: Hub is set C/L of the Utility.	

PROFILE VIEW

	Top of utility field measurement: <u>6.20'</u>	Elevation: <u>162.34'</u>
	Bottom of utility field measurement: <u>None</u>	Elevation: <u>None</u>

Facing: West	Utility Width/Spacing:
---------------------	-------------------------------

PLAN VIEW

COORDINATES

Northing: 7000544.2830	Easting: 11876351.8870
<u>COMMENTS/NOTES</u>	