

# MOORSBRIDGE ELEMENTARY SCHOOL - BID PACKAGE 2: DISTRICT WIDE ACCESS CONTROL

## PORTAGE PUBLIC SCHOOLS Portage, Michigan CONSTRUCTION DOCUMENTS

### DESIGN TEAM

#### ARCHITECT/ENGINEER

**TowerPinkster**  
Architecture · Engineering · Interiors

242 E. KALAMAZOO AVE, SUITE 100  
KALAMAZOO, MICHIGAN 49007  
PHONE: 269.343.6133  
FAX: 269.343.6633

### REFERENCED CODES

BUILDING: 2015 MICHIGAN BUILDING CODE AND 2012 NFPA 101 LIFE SAFETY CODE  
ENERGY: 2015 MICHIGAN ENERGY CODE  
PLUMBING: 2018 MICHIGAN PLUMBING CODE  
MECHANICAL: 2015 MICHIGAN MECHANICAL CODE  
FUEL GAS: (IFGC) 2015 INTERNATIONAL FUEL GAS CODE  
ELECTRICAL: 2017 NATIONAL ELECTRICAL CODE WITH MICHIGAN AMENDMENTS  
BARRIER-FREE: 2015 MICHIGAN BUILDING CODE AND 2009 ICC & C A117.1  
USE GROUP: E  
CONSTRUCTION TYPE: II-B  
AUTOMATIC SPRINKLERS: YES

#### PROJECT AREA

TOTAL FINISHED PROJECT: 400 SQ. FT.

### DRAWING INDEX

GENERAL  
G 001 COVER SHEET

ARCHITECTURAL GENERAL  
AG 001 GENERAL ARCHITECTURAL NOTES, INTERIOR PARTITION TYPES AND  
DEVICE ALIGNMENT GUIDELINES

ARCHITECTURAL DEMOLITION  
AD 101 FIRST FLOOR DEMOLITION PLAN & REFLECTED CEILING DEMOLITION PLAN

INTERIORS GENERAL  
IG 001 TYPICAL DETAILS & GENERAL NOTES

INTERIORS  
I 101A FIRST FLOOR FINISH PLAN - UNIT A

### SITE ADDRESS

MOORSBRIDGE ELEMENTARY SCHOOL  
7361 MOORSBRIDGE ROAD  
PORTAGE, MI 49024

**TowerPinkster**  
Architecture · Engineering · Interiors

ISSUED FOR DATE

PROJECT TITLE  
MOORSBRIDGE ELEMENTARY SCHOOL -  
BID PACKAGE 2: DISTRICT WIDE ACCESS  
CONTROL

OWNER  
PORTAGE PUBLIC SCHOOLS

Portage, Michigan

DATE  
FEBRUARY 16, 2024

SHEET TITLE  
COVER SHEET

SHEET NUMBER  
G 001  
23-214.40

**TowerPinkster**  
Architecture · Engineering · Interiors  
© 2023. ALL RIGHTS RESERVED

**GENERAL NOTES - ARCHITECTURAL - PARTITIONS**

- 1 NOT ALL WALL TYPES MAY BE USED ON PROJECT.
- 2 REFER TO CODE COMPLIANCE PLANS FOR LOCATIONS OF SMOKE AND FIRE-RATED PARTITIONS.
- 3 ALL PARTITIONS EXTEND TO BOTTOM OF STRUCTURE, UNLESS NOTED OTHERWISE.
- 4 LINE OF STRUCTURE/DECK AS SHOWN AT THE HEAD CONDITION OF EACH PARTITION TYPE IS DIAGRAMMATIC ONLY AND DOES NOT INDICATE EXACT CONSTRUCTION CONDITIONS. TERMINATE RATED PARTITIONS AT UNDERSIDE OF STRUCTURAL DECK TO MAINTAIN RATING. PROVIDE APPROPRIATE FRAMING AND GYPSUM BOARD TO OFFSET AROUND STRUCTURE OR OTHER OBSTRUCTIONS, SUCH AS PIPING OR DUCTWORK.
- 5 PARTITIONS MAY TERMINATE AT STRUCTURAL MEMBERS WITH A RATING GREATER THAN OR EQUAL THE PARTITION, PROVIDED THAT RATING IS CONTINUOUS TO STRUCTURAL DECK ABOVE.
- 6 NON-RATED PARTITIONS THAT EXTEND TO STRUCTURE SHALL TERMINATE AT UNDERSIDE OF STRUCTURAL DECK TO MAINTAIN A CONTINUOUS PLANE OF GYPSUM BOARD AS A NOISE, SMOKE OR OTHER TYPE OF BARRIER.
- 7 ALL PARTITIONS EXTENDING TO STRUCTURE ABOVE SHALL TERMINATE WITH DEFLECTION TRACK - REFER TO INTERIOR PARTITION TYPE DETAIL ON THIS SHEET.
- 8 ALL GYPSUM BOARD PARTITIONS NOT EXTENDING TO THE STRUCTURE MUST BE BRACED.
- 9 UL DESIGN NUMBERS REFER TO THE FIRE RESISTANCE DIRECTORY; UNDERWRITERS LABORATORY, LATEST EDITION.
- 10 MISCELLANEOUS NON-RATED CHASES TO BE 5/8" GYPSUM BOARD ON 3 5/8" METAL STUD FRAMING AT 16" O.C., UNLESS NOTED OTHERWISE.
- 11 MISCELLANEOUS FURRING AROUND COLUMNS TO BE 5/8" GYPSUM BOARD ON 1 1/2" STUDS, UNLESS NOTED OTHERWISE.
- 12 FIRE-RATED PARTITIONS TO HAVE FIRE-STOPPING SEALANTS AT HEAD, SILL, JUNCTURE WITH DISSIMILAR MATERIALS, ETC. AND AROUND ALL PENETRATIONS AND OPENINGS.
- 13 CONSTRUCT ALL PARTITIONS WITH SOUND ATTENUATION BATTS WITH THE FOLLOWING SOUND BATT THICKNESS: 2 1/2" OR LESS METAL STUD - 1 1/2" THICKNESS, 3 5/8" OR LARGER METAL STUD - 3" THICKNESS, UNLESS NOTED OTHERWISE.

**GENERAL NOTES - ARCHITECTURAL - DEMOLITION**

- 1 CONTRACTORS ARE REQUIRED TO INSPECT/REVIEW THE EXISTING BUILDING PRIOR TO RELATED DEMOLITION WORK. UNLESS NOTED OTHERWISE, REMOVAL OF ANY WALL, FLOOR OR CEILING INCLUDES ALL GENERAL MECHANICAL AND ELECTRICAL ITEMS WHICH ARE A PART OF, OR ATTACHED TO IT.
- 2 CONTRACTOR SHALL VERIFY ALL EXISTING JOB SITE CONDITIONS AND DIMENSIONS AND BE RESPONSIBLE FOR THE SAME. ADVISE CONSTRUCTION MANAGER OF ANY AND ALL DISCREPANCIES.
- 3 PATCH FLOORS, WALLS AND CEILINGS DAMAGED DURING CONSTRUCTION AND DEMOLITION AS REQUIRED. FINISH TO MATCH EXISTING.
- 4 ACCOMMODATE NEW CONSTRUCTION IF NOT INDICATED.
- 5 PROTECT ALL EXISTING FINISHES THROUGHOUT PROJECT.
- 6 REFER TO DEMOLITION ELEVATIONS, SECTIONS AND DETAILS FOR ADDITIONAL INFORMATION.
- 7 REFER TO STRUCTURAL, MECHANICAL, PLUMBING AND ELECTRICAL PLANS FOR ADDITIONAL DEMOLITION NOTES.
- 8 SALVAGE ALL UNISTRUT AND PROTECT FOR RE-USE IN NEW CONSTRUCTION, IF REQUIRED.
- 9 AT LOCATIONS OF REMOVED WALLS, ALL ASSOCIATED ITEMS ATTACHED TO THE WALL ARE TO BE REMOVED. SUCH AS: DOORS, WINDOWS, FRAMES, MARKERBOARDS, TACKBOARDS, TACK STRIPS, ETC.

**GENERAL NOTES - ARCHITECTURAL - NEW CONSTRUCTION**

- 1 THE OWNER RESERVES THE RIGHT TO REMOVE ANY ITEM FROM THE PROJECT PRIOR TO COMMENCEMENT OF CONTRACTED DEMOLITION WORK.
- 2 ALL EXISTING CONDITIONS SHOULD BE FIELD VERIFIED BEFORE WORK BEGINS.
- 3 DIMENSIONS GIVEN ARE ACTUAL AND ARE TO THE FACE OF MASONRY UNITS OR TO THE FACE OF STUD FRAMING, UNLESS NOTED OTHERWISE.
- 4 DETAILS SHOWN ILLUSTRATE DESIGN INTENT, NOT ALL POSSIBLE CONDITIONS. FOR CONDITIONS NOT SHOWN, USE DETAILS CLOSEST TO CONDITION IN QUESTION.
- 5 EXTEND ALL INTERIOR WALL PARTITIONS FROM FLOOR TO STRUCTURE/DECK ABOVE UNLESS NOTED OR DETAILED OTHERWISE.
- 6 WITHIN BUILDING INTERIOR PROVIDE BULLNOSE BLOCK IN CMU WALL ASSEMBLIES AT ALL EXPOSED OUTSIDE CORNERS, INCLUDING WINDOW AND DOOR JAMBS, UNLESS NOTES OR DETAILED OTHERWISE. PROVIDE SQUARE CORNERS AT ALL LOCATIONS FINISHED WITH WALL TILE. REFER TO FINISH PLANS (1100 SHEETS) FOR LOCATIONS.
- 7 TOOTH-IN MASONRY AT NEW OPENINGS IN EXISTING WALLS.
- 8 TOOTH-IN NEW MASONRY INFILL INTO EXISTING OPENINGS AT ALL BULLNOSE BLOCK LOCATIONS.
- 9 STUD WALLS SPANNING OVER 12'-0" IN HEIGHT SHALL BE A MINIMUM OF 20 GAUGE.
- 10 STUD WALL SUPPORTING WALL CABINETS SHALL BE A MINIMUM OF 20 GAUGE.
- 11 DOORS ARE TO BE 4" FROM CORNER OF ROOM, UNLESS NOTED OR DIMENSIONED OTHERWISE.
- 12 FIRESTOP ALL INTERCONNECTIONS BETWEEN VERTICAL AND HORIZONTAL SPACES AND CONCEALED WALL SPACES AT CEILING, FLOOR AND ROOF LEVELS.
- 13 FIRESEAL ALL PENETRATIONS, SUCH AS, PIPES, DUCTS, CONDUITS, ETC. THROUGH FIRE AND/OR SMOKE RATED ASSEMBLIES.
- 14 FOR CONTROL JOINT (C.J.) LOCATIONS REFER TO EXTERIOR ELEVATIONS AND/OR FLOOR PLANS.
- 15 PAINT ALL ELECTRICAL PANEL COVERS AND ACCESS PANELS TO MATCH ADJACENT FINISHES. USING OIL-BASED PAINT, NOT LATEX WALL PAINT.
- 16 PROVIDE WOOD BLOCKING IN WALLS THAT REQUIRE WALL MOUNTED EQUIPMENT OR ACCESSORIES. COORDINATE WITH EQUIPMENT OR ACCESSORY MANUFACTURER.
- 17 PROVIDE ALL ASSOCIATED CURBS FOR ROOF TOP EQUIPMENT AND MECHANICAL ROOF TOP UNITS. LARGE VOIDS BELOW THE AIR HANDLING UNITS SHALL BE FILLED WITH INSULATION AS SPECIFIED FOR NOISE CONTROL.
- 18 ALL EXISTING ROOF TOP PENETRATIONS BEING REMOVED REQUIRE ROOF PATCHING TO MATCH EXISTING ADJACENT.

**PARTITION STUD KEY - METAL, CH, AND WOOD**

DESIGNATION	SIZE
A	GYPSUM BOARD DIRECT APPLIED TO CMU
B	7/8"
C	1 1/2"
D	1 5/8"
E	2 1/2"
F	3 1/2"
G	3 5/8"
H	4"
J	5 1/2"
K	6"
L	8"
M	10"
N	12"
P	OPEN
Q	OPEN

DESIGNATION	SIZE
R	2 1/2"
S	4"
T	6"

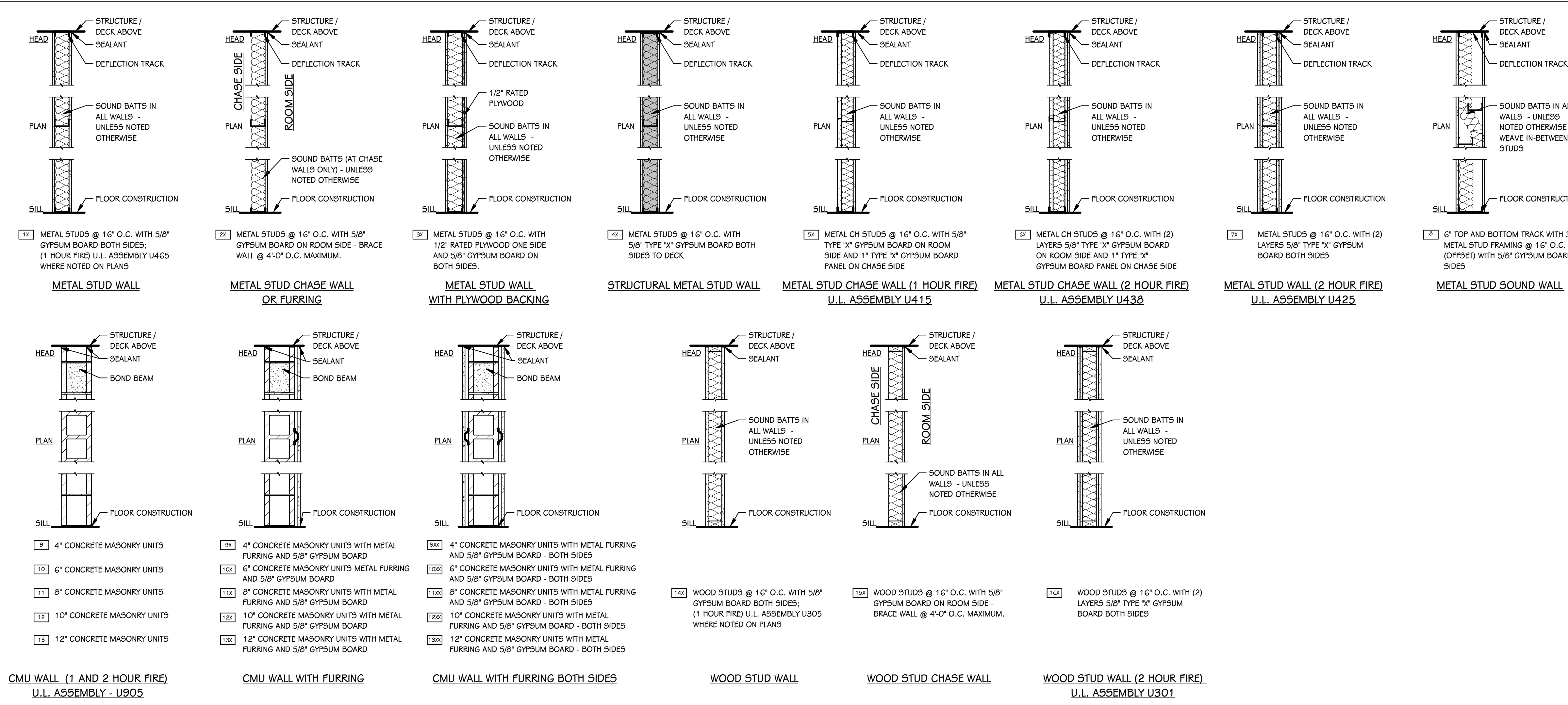
DESIGNATION	SIZE
U	2"x4"
V	2"x6"
W	2"x8"

PARTITION TYPE TAG (REFER TO FLOOR PLANS)

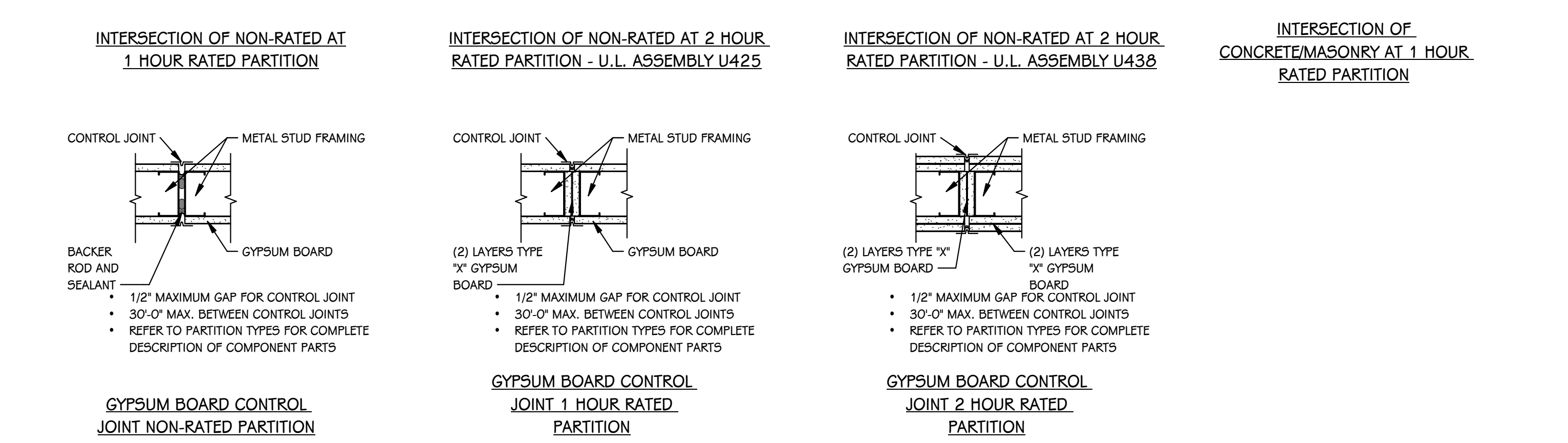
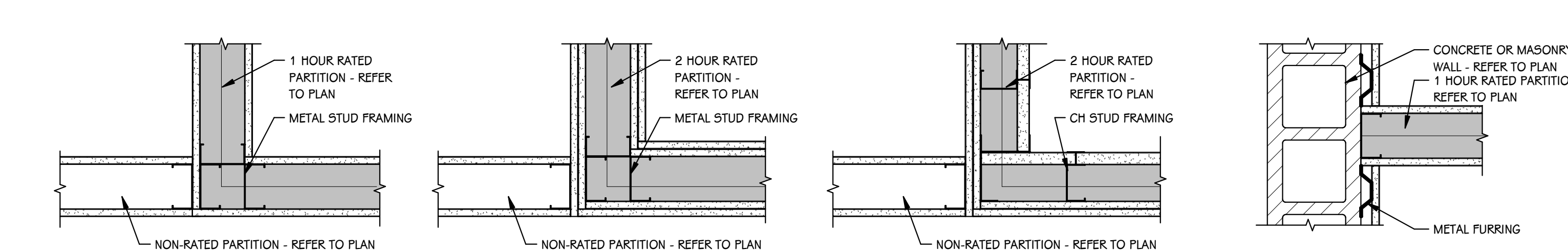
PARTITION TYPE NUMBER

STUD SIZE DESIGNATION

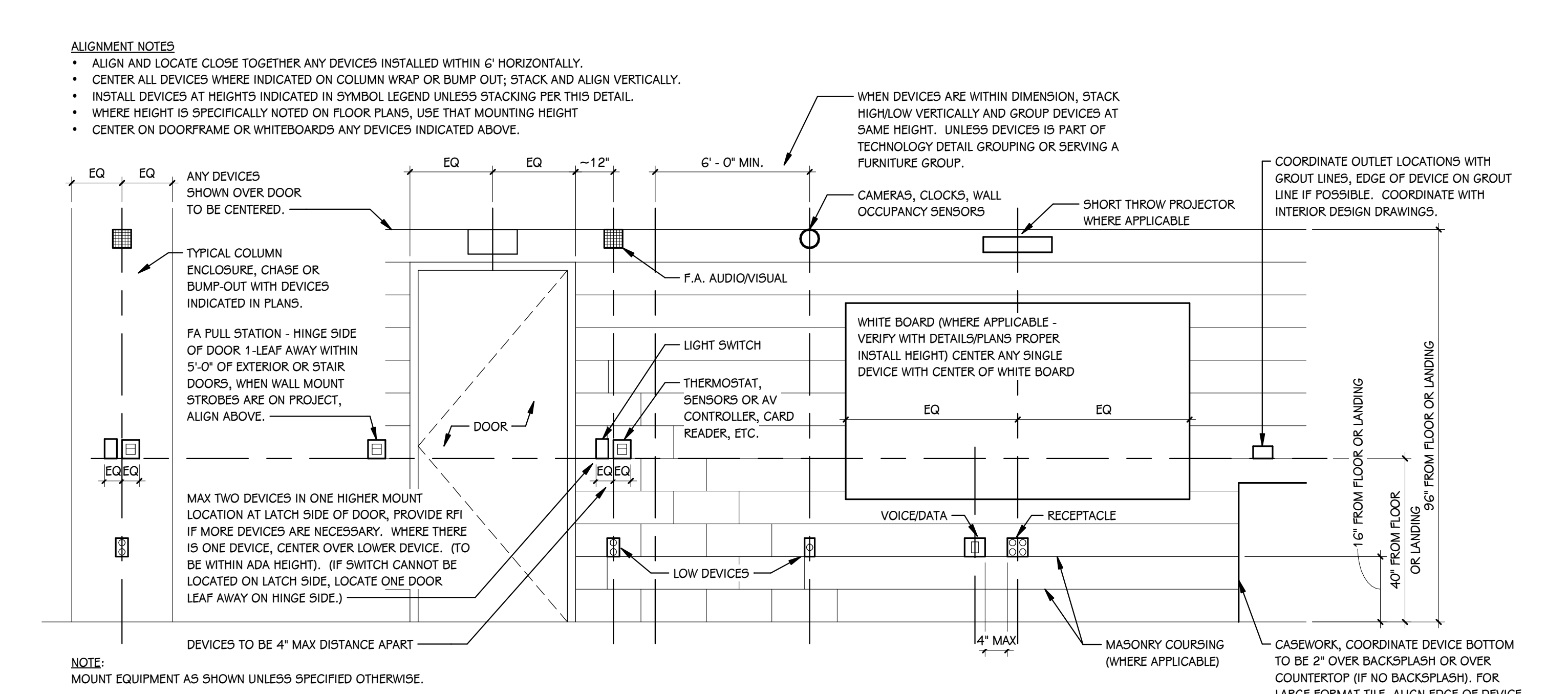
FIRE RATING, IF REQUIRED



**INTERIOR PARTITION TYPES**  
3/4" = 1'-0"



**FIRE RATED WALL PLAN DETAILS**  
SCALE: NONE



**DEVICE ALIGNMENT GUIDELINES**  
SCALE: NONE

ISSUED FOR DATE

PROJECT TITLE  
**MOORSBRIDGE ELEMENTARY SCHOOL - BID PACKAGE 2: DISTRICT WIDE ACCESS CONTROL**

OWNER  
**PORTAGE PUBLIC SCHOOLS**

SHEET TITLE  
**GENERAL ARCHITECTURAL NOTES, INTERIOR PARTITION TYPES AND DEVICE ALIGNMENT GUIDELINES**

Portage, Michigan

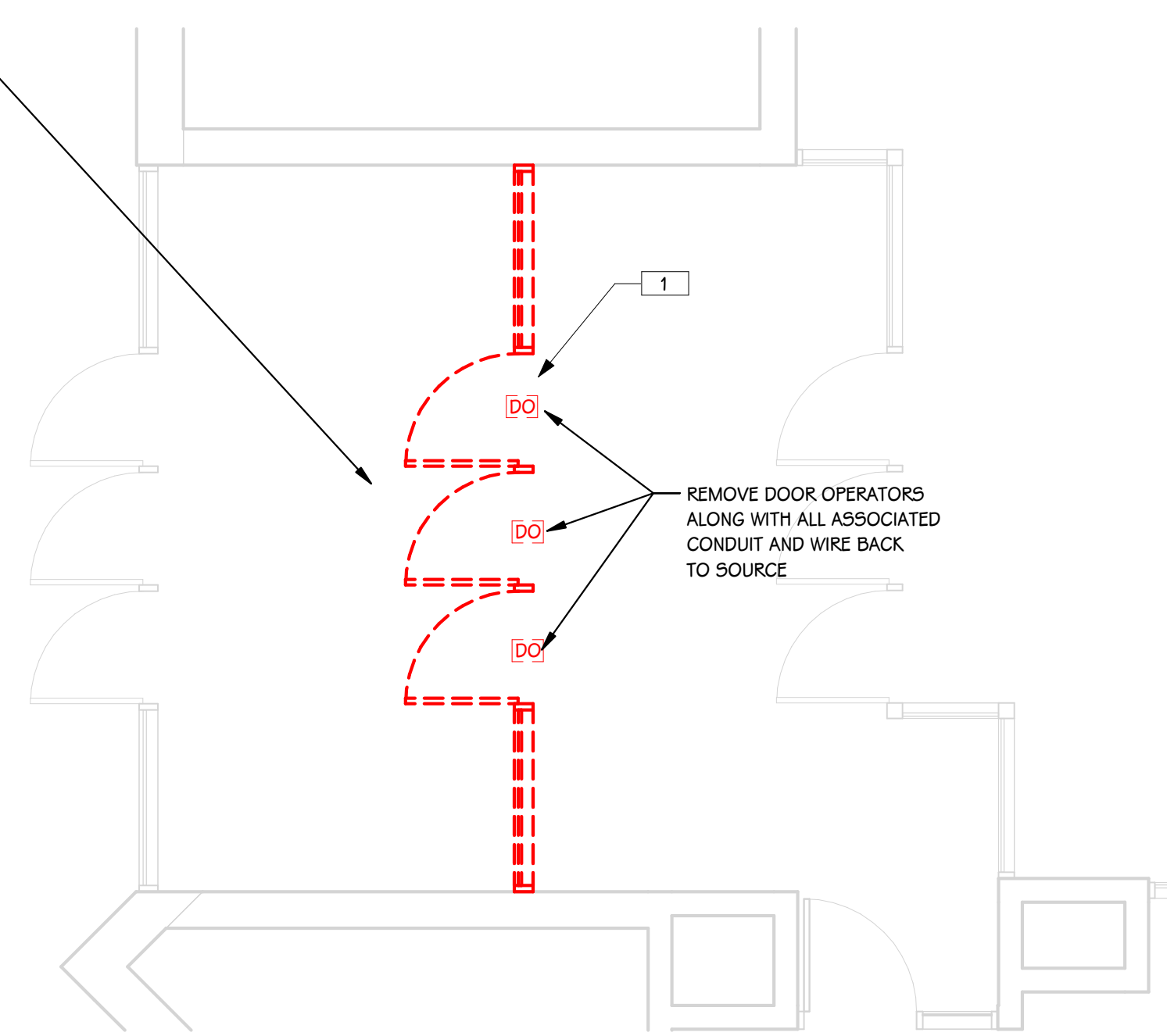
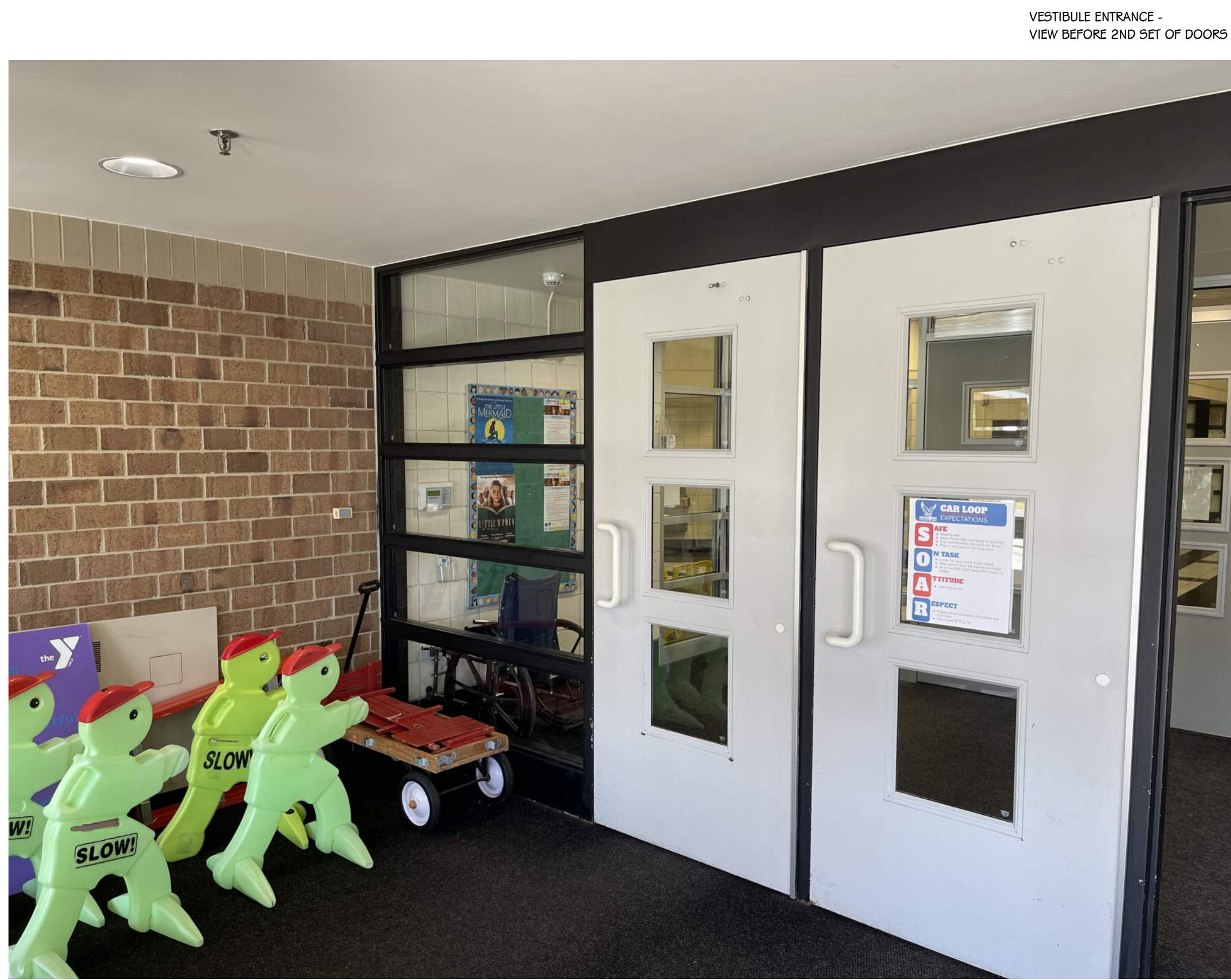
DATE  
**FEBRUARY 16, 2024**

SHEET NUMBER  
**AG 001**

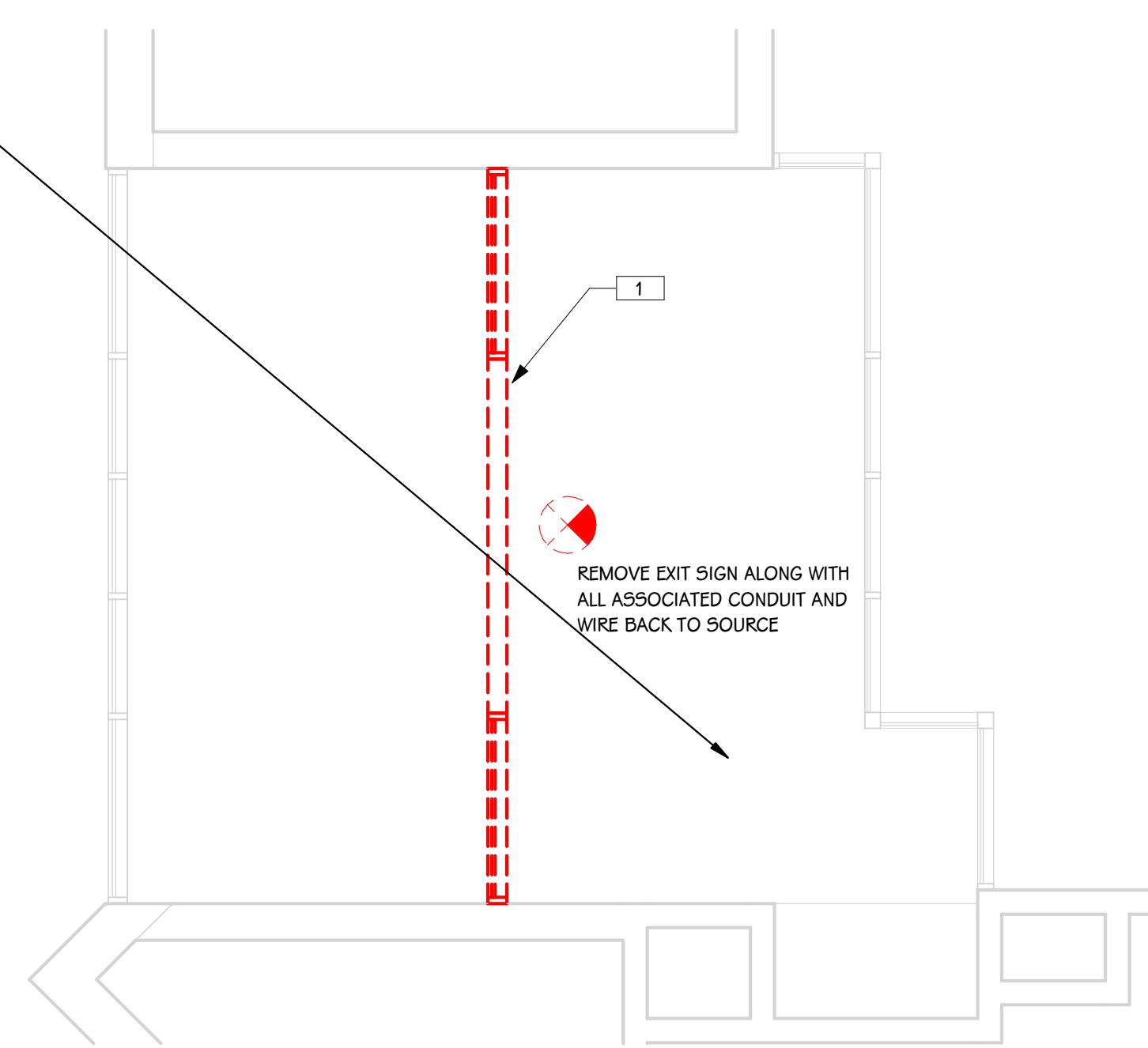
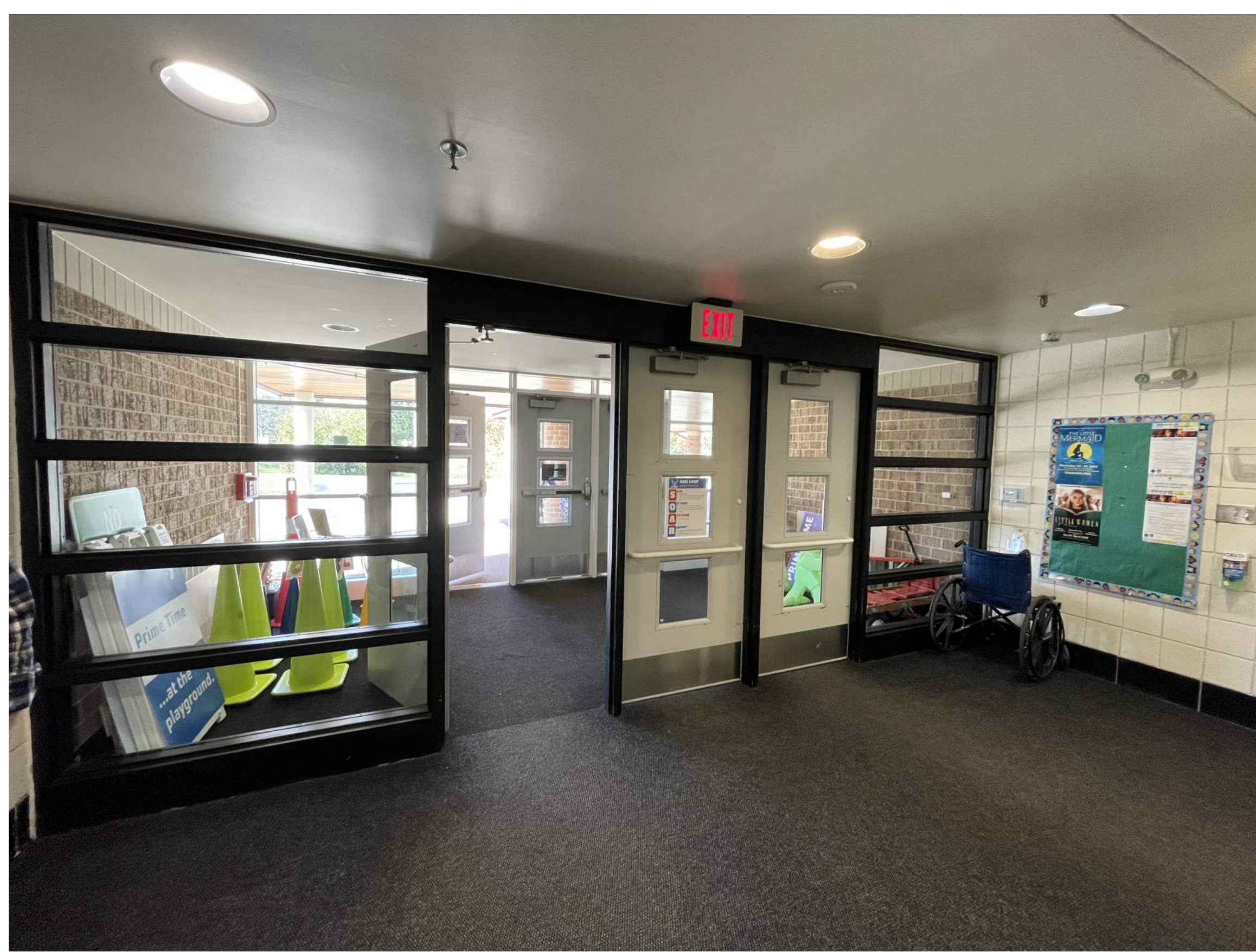
23-214-40



KEYED NOTES - ARCHITECTURAL - DEMOLITION	
1	REMOVE AND DISCARD HOLLOW METAL FRAME SYSTEM AND HARDWARE. PATCH WALL AND CEILING AS REQUIRED.
ELECTRICAL SYMBOLS	
	EXIT SIGN - CEILING MOUNTED
	DOOR OPERATOR
GENERAL NOTE - ELECTRICAL - DEMOLITION	
1	FIXTURES, DEVICES AND EQUIPMENT SHOWN DASHED OR WITH AN "X" ARE TO BE REMOVED. FIXTURES, DEVICES AND EQUIPMENT SHOWN LIGHTLY OR WITH AN "E" ARE EXISTING TO REMAIN UNDISTURBED.
2	DEVICES SHOWN WITH AN "R" ARE EXISTING TO BE REPLACED WITH NEW DEVICE AND COVERPLATE. REUSE EXISTING CODE COMPLIANT WIRING.
3	CONTRACTOR SHALL BE RESPONSIBLE FOR PROJECT PHASING. TEMPORARY POWER, EGRESS LIGHTING, EXIT SIGNAGE, PULL STATIONS AND BATTERY BACKUP LIGHTING SHALL BE PROVIDED AS REQUIRED WHILE BUILDING IS OCCUPIED BETWEEN PHASES OF CONSTRUCTION.
4	PATCH AND REPAIR ANY MATERIALS TO MATCH ADJACENT FOR ANY EQUIPMENT OR LIGHT FIXTURES REMOVED OR MATERIALS DAMAGED IN REMOVAL.



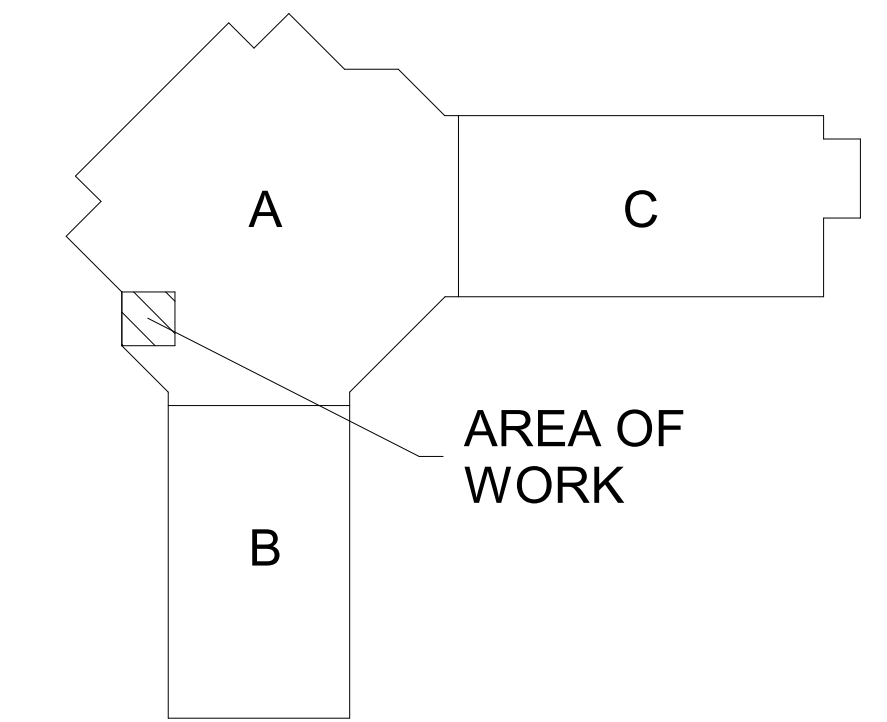
**FIRST FLOOR DEMOLITION PLAN - PARTIAL UNIT A**  
1/4" = 1'-0"



**FIRST FLOOR REFLECTED CEILING DEMOLITION PLAN - PARTIAL UNIT A**  
1/4" = 1'-0"

**THIS DRAWING SHEET IS INTENDED TO BE PLOTTED IN COLOR. IF THIS TEXT APPEARS IN BLACK AND WHITE, IT IS PLOTTED INCORRECTLY. DISCARD AND OBTAIN AN ACCURATE DRAWING**

**MOORSBRIDGE ELEMENTARY SCHOOL**



**KEY PLAN**  
SCALE: NO SCALE



INTERIOR - TYPICAL SYMBOLS AND REFERENCES	
	INDICATES MATERIAL TYPE
	INDICATES CORRESPONDING SELECTION IN MATERIAL SELECTION SCHEDULE
	INDICATES WALL FINISH
	INDICATES BASE FINISH
	INDICATES FLOOR FINISH
	WHERE HEIGHTS ARE NOT INDICATED REFER TO TYPICAL DETAIL OR ELEVATION
	INDICATES UPPER WALL FINISH
	INDICATES LOWER WALL FINISH
	INDICATES BASE FINISH
	INDICATES FLOOR FINISH
	INDICATES COUNTERTOP FINISH
	INDICATES CABINET FINISH (BASE AND UPPER)
	INDICATES EXTENT OF ATYPICAL FINISH (WALL, BASE, OR FLOOR)
	INDICATES DISSIMILAR FLOOR MATERIAL FINISHES, REFER TO TYPICAL FLOOR TRANSITION DETAILS
	INDICATES MULTIPLE MATERIALS, REFER TO ENLARGED PLANS OR ELEVATIONS
	INDICATES PATTERNED INSTALLATION OF A SINGLE MATERIAL TYPE, REFER TO DETAIL OR ELEVATION
	INDICATES PATTERN INTENT, REFER TO DETAIL OR ELEVATION
	INDICATES VISUAL DISPLAY BOARD, REFER TO VISUAL DISPLAY BOARD SCHEDULES
	INDICATES CORNER GUARD, REFER TO MATERIAL SELECTION SCHEDULE
	INDICATES WINDOW TREATMENT, REFER TO WINDOW TREATMENT SCHEDULE
	INDICATES INSTALLATION OF GRAIN

- NOTES - INTERIORS**
- REFER TO MATERIAL SELECTION SCHEDULE FOR FINISH INFORMATION.
  - REFER TO ARCHITECTURAL FLOOR PLANS AND SPECIFICATION FOR ADDITIONAL INFORMATION ON CONSTRUCTION MATERIALS.
  - REFER TO ARCHITECTURAL ENLARGED STAIR PLANS FOR RAILINGS, GUARD RAILS, FINISH COLORS OF ANY PAINTED METALS. COORDINATE STAIR DETAILS WITH FLOORING TYPES INDICATED ON FINISH PLANS.
  - REFER TO ARCHITECTURAL FLOOR PLANS FOR LOCKER LOCATIONS AND QUANTITIES.
  - REFER TO ARCHITECTURAL GENERAL SHEETS FOR BARRIER-FREE MOUNTING HEIGHT REQUIREMENTS AND CODE-REQUIRED SIGNAGE.
  - REFER TO ARCHITECTURAL ENLARGED TOILET ROOM PLANS FOR TOILET ACCESSORIES, PARTITIONS, ETC.
  - REFER TO REFLECTED CEILING PLANS FOR CEILING FINISH AND HEIGHTS.
  - WALL MOUNTED DIFFUSERS, GRILLES, ACCESS PANELS, ELECTRICAL PANELS, ETC. ARE TO BE PAINTED WITH AN OIL-BASED PAINT TO MATCH THE ADJACENT WALL FINISH.
  - AT AREAS OF EXPOSED CEILING WHERE DUCTWORK AND DIFFUSERS ARE TO BE PAINTED, COORDINATE WITH MECHANICAL SPECIFICATIONS AND REFER TO THE REFLECTED CEILING PLANS FOR PAINT COLORS.
  - CEILING ACCESS PANELS ARE TO BE PAINTED TO MATCH ADJACENT CEILING FINISH.
  - REFER TO DOOR SCHEDULE FOR FINISH ON DOORS AND FRAMES.
  - REFER TO FINISH PLANS FOR VISUAL DISPLAY BOARD LOCATIONS.
  - REFER TO INTERIOR ELEVATION SHEETS FOR REQUIREMENTS, GENERAL NOTES, ABBREVIATIONS, AND HARDWARE/ACCESSORY SELECTIONS FOR CASEWORK.
  - REFER TO INTERIORS TYPICAL DETAIL SHEETS FOR TILE TRIM DETAILS, FLOORING TRANSITIONS, WAINSCOT DETAILS, AND TYPICAL TILE PATTERN REQUIREMENTS.
  - ALL FLOOR SUPPORTED STORAGE RACKS, CABINETS, BOOKCASES, ETC. WHEN ADJACENT TO THE WALL SHALL BE FASTENED TO BOTH THE FLOOR AND WALL.
  - PROVIDE BLOCKING AS REQUIRED FOR ATTACHMENT OF CASEWORK, MILLWORK, SHELVING, EQUIPMENT, SPECIALTY FINISHES, ETC.
  - DETAILS SHOWN ILLUSTRATE DESIGN INTENT, NOT ALL POSSIBLE CONDITIONS. FOR CONDITIONS NOT SHOWN USE DETAILS CLOSEST TO CONDITION IN QUESTION.

DEFINITIONS/ABBREVIATIONS - INTERIORS	
A.F.F.	ABOVE FINISHED FLOOR
BF	BARRIER FREE
CL	CENTER LINE
EX.	EXISTING
HOLD	HOLD DIMENSION
MIN.	MINIMUM CODE ALLOWABLE DIMENSION
OC	ON CENTER
OPP.	OPPOSITE
SIM	SIMILAR
TYP.	TYPICAL
V.I.F.	VERIFY IN FIELD

ISSUED FOR \_\_\_\_\_ DATE \_\_\_\_\_

PROJECT TITLE  
**MOORSBRIDGE ELEMENTARY SCHOOL -  
BID PACKAGE 2: DISTRICT WIDE ACCESS  
CONTROL**

OWNER  
**PORTAGE PUBLIC SCHOOLS**

Portage, Michigan

SHEET TITLE  
**TYPICAL DETAILS & GENERAL NOTES**

DATE  
**FEBRUARY 16, 2024**

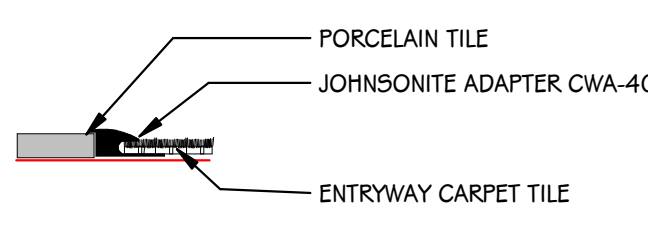
SHEET NUMBER  
**IG 001**  
23-214-40

**MATERIAL SELECTION SCHEDULE**

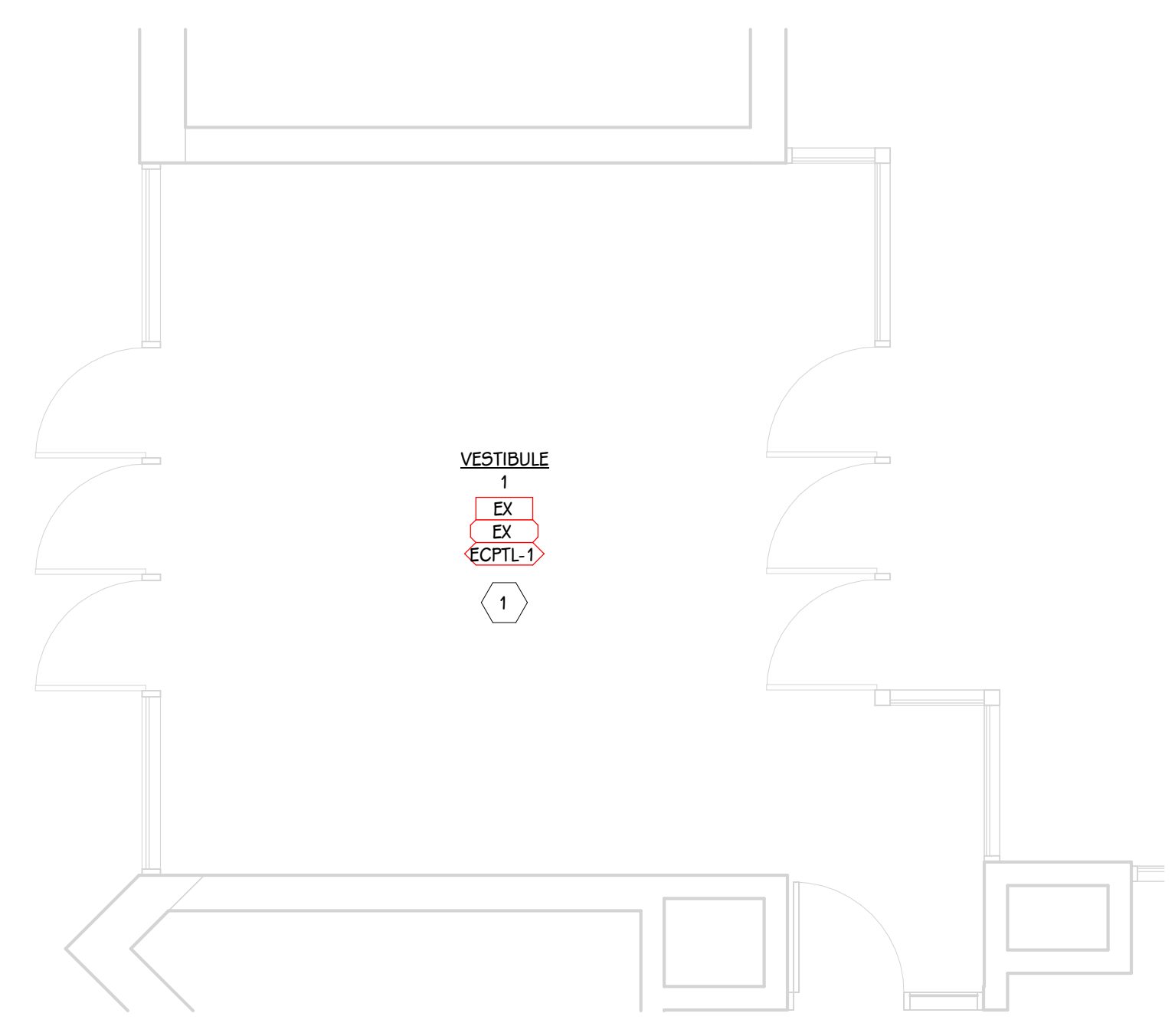
ABBREV	ITEM	MANUFACTURER	PATTERN	COLOR	PRODUCT NO.	SIZE	SINGLE SOURCE	BASIS OF DESIGN	ADDITIONAL MANUFACTURERS	REMARKS
ACP-1	ENTRYWAY CARPET TILE	MILLIKEN	OBEX CUTXGRAIN	GREY	GRX235-27	25 CM X 1M	X	--		--
P-1	PAINT	SHERWIN WILLIAMS	--	MATCH EXISTING	--	--		X	BENJAMIN MOORE, PITTSBURGH PAINTS	MATCH ADJACENT WALL PAINT

NOTES:  
 - NO COMPARABLE PRODUCTS WILL BE REVIEWED FOR PRODUCTS DESIGNATED AS SINGLE SOURCE.  
 - COMPARABLE PRODUCTS WILL BE REVIEWED FOR ITEMS LISTED AS BASIS OF DESIGN. COMPARABLE PRODUCTS ARE REQUIRED TO MEET ANY MINIMUM PERFORMANCE REQUIREMENTS LISTED IN REMARKS AND DESIGN ATTRIBUTES OF SPECIFIED PRODUCT.  
 - REFER TO PRODUCT SPECIFICATION FOR TRIMS AND ACCESSORIES ASSOCIATED WITH SPECIFIED PRODUCTS ABOVE.

PORCELAIN TILE TO CARPET TILE



**1** TYPICAL FLOORING TRANSITIONS  
1/10" = 1'-0"



**FIRST FLOOR FINISH PLAN - UNIT A**  
1/4" = 1'-0"

**NOTES - FINISH PLANS**

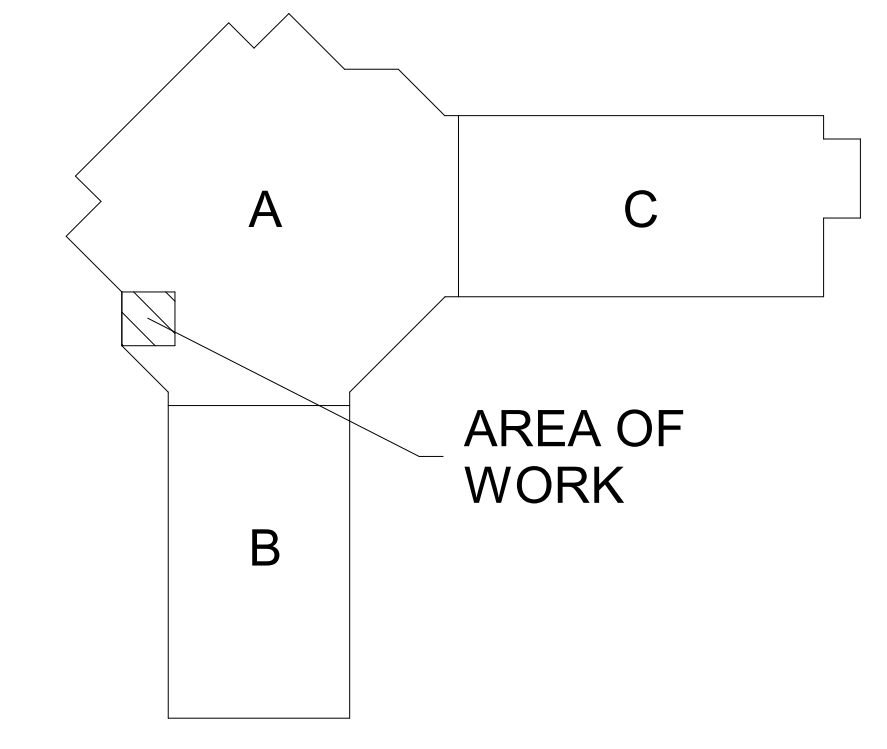
- 1 FINISH TAGS APPLY TO LIKE MATERIALS IN ENTIRE ROOM. I.E. CASEWORK TAG MAY ONLY CALLOUT ONE RUN OF CASEWORK, BUT ALL CASEWORK IN ROOM RECEIVE THE SAME FINISHES, UNLESS TAGGED DIFFERENTLY.
- 2 CASEWORK FINISH TAGS DO NOT APPLY TO CUSTOM MILLWORK PIECES. REFER TO ENLARGED MILLWORK DETAILS FOR FINISH MATERIALS.
- 3 REFER TO ENLARGED FINISH PLANS AND PATTERN PLANS FOR ADDITIONAL FINISH DETAILS.
- 4 DASHED LINE INDICATES LINE OF CEILING ABOVE, REFER TO REFLECTED CEILING PLANS.
- 5 WHERE NO FINISH TAG IS SHOWN ALL EXISTING FINISHES ARE TO REMAIN, UNLESS OTHERWISE NOTED.

**KEYED NOTES - INTERIOR - FINISH PLAN**

- 1 PATCH AND TOUCH UP WALL PAINT AND BASE TO MATCH EXISTING

**THIS DRAWING SHEET IS INTENDED TO BE PLOTTED IN COLOR. IF THIS TEXT APPEARS IN BLACK AND WHITE, IT IS PLOTTED INCORRECTLY. DISCARD AND OBTAIN AN ACCURATE DRAWING**

**MOORSBRIDGE ELEMENTARY SCHOOL**



**KEY PLAN**  
SCALE: NO SCALE

ISSUED FOR DATE

PROJECT TITLE  
**MOORSBRIDGE ELEMENTARY SCHOOL - BID PACKAGE 2: DISTRICT WIDE ACCESS CONTROL**

OWNER  
**PORTAGE PUBLIC SCHOOLS**

Portage, Michigan

SHEET TITLE  
**FIRST FLOOR FINISH PLAN - UNIT A**

DATE  
**FEBRUARY 16, 2024**

SHEET NUMBER  
**I 101A**  
 23-214-40