

WEST MIDDLE SCHOOL - BID PACKAGE 2: DISTRICT WIDE ACCESS CONTROL

PORTAGE PUBLIC SCHOOLS Portage, Michigan CONSTRUCTION DOCUMENTS

DESIGN TEAM

ARCHITECT/ENGINEER

TowerPinkster
Architecture · Engineering · Interiors

242 E. KALAMAZOO AVE, SUITE 100
KALAMAZOO, MICHIGAN 49007
PHONE: 269.343.6133
FAX: 269.343.6633

REFERENCED CODES

BUILDING: 2015 MICHIGAN BUILDING CODE AND 2012 NFPA 101 LIFE SAFETY CODE
ENERGY: 2015 MICHIGAN ENERGY CODE
PLUMBING: 2018 MICHIGAN PLUMBING CODE
MECHANICAL: 2015 MICHIGAN MECHANICAL CODE
FUEL GAS: (IFGC) 2015 INTERNATIONAL FUEL GAS CODE
ELECTRICAL: 2017 NATIONAL ELECTRICAL CODE WITH MICHIGAN AMENDMENTS
BARRIER-FREE: 2015 MICHIGAN BUILDING CODE AND 2009 ICC & C A117.1
USE GROUP: E
CONSTRUCTION TYPE: II-B
AUTOMATIC SPRINKLERS: YES

PROJECT AREA

TOTAL FINISHED PROJECT: 500 SQ. FT.

DRAWING INDEX

GENERAL
G 001 COVER SHEET

ARCHITECTURAL GENERAL
AG 001 GENERAL ARCHITECTURAL NOTES, INTERIOR PARTITION TYPES, DEVICE ALIGNMENT GUIDELINES, & ABBREVIATIONS

ARCHITECTURAL DEMOLITION
AD 101 FIRST FLOOR DEMOLITION PLAN & REFLECTED CEILING DEMOLITION PLAN

ARCHITECTURAL
A 101 FIRST FLOOR PLAN & REFLECTED CEILING PLAN

INTERIORS GENERAL
IG 001 TYPICAL SYMBOLS & GENERAL NOTES

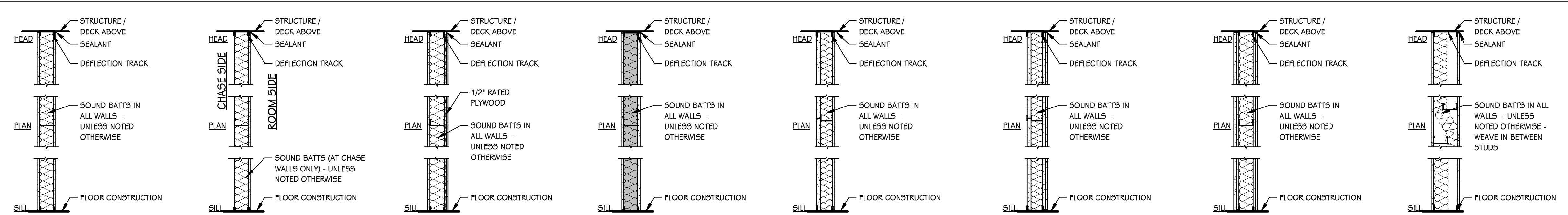
INTERIORS
I 101C MATERIAL SELECTION SCHEDULE & FIRST FLOOR FINISH PLAN - UNIT C

ELECTRICAL - GENERAL
EG 001 ELECTRICAL SYMBOLS AND GENERAL NOTES

ELECTRICAL
E 101C FIRST FLOOR POWER PLAN - UNIT C

SITE ADDRESS

PORTAGE WEST MIDDLE SCHOOL
7145 MOORSBRIDGE ROAD
PORTAGE, MI 49024



14 METAL STUDS @ 16" O.C. WITH 5/8" GYPSUM BOARD BOTH SIDES; (1 HOUR FIRE) U.L. ASSEMBLY U465 WHERE NOTED ON PLANS
METAL STUD WALL

15 METAL STUDS @ 16" O.C. WITH 5/8" GYPSUM BOARD ON ROOM SIDE - BRACE WALL @ 4'-0" O.C. MAXIMUM.
METAL STUD CHASE WALL OR FURRING

16 METAL STUDS @ 16" O.C. WITH 1/2" RATED PLYWOOD ONE SIDE AND 5/8" GYPSUM BOARD ON BOTH SIDES
METAL STUD WALL WITH PLYWOOD BACKING

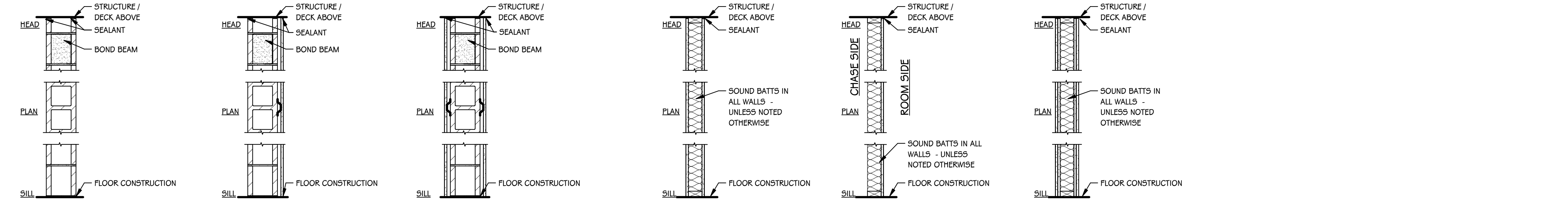
17 METAL STUDS @ 16" O.C. WITH 5/8" TYPE "X" GYPSUM BOARD BOTH SIDES TO DECK
STRUCTURAL METAL STUD WALL

18 METAL CH STUDS @ 16" O.C. WITH 5/8" TYPE "X" GYPSUM BOARD ON ROOM SIDE AND 1" TYPE "X" GYPSUM BOARD PANEL ON CHASE SIDE
METAL STUD CHASE WALL (1 HOUR FIRE) U.L. ASSEMBLY U415

19 METAL CH STUDS @ 16" O.C. WITH (2) LAYERS 5/8" TYPE "X" GYPSUM BOARD ON ROOM SIDE AND 1" TYPE "X" GYPSUM BOARD PANEL ON CHASE SIDE
METAL STUD CHASE WALL (2 HOUR FIRE) U.L. ASSEMBLY U438

20 METAL STUDS @ 16" O.C. WITH (2) LAYERS 5/8" TYPE "X" GYPSUM BOARD BOTH SIDES
METAL STUD WALL (2 HOUR FIRE) U.L. ASSEMBLY U425

21 6" TOP AND BOTTOM TRACK WITH 3 5/8" METAL STUD FRAMING @ 16" O.C. (OFFSET) WITH 5/8" GYPSUM BOARD BOTH SIDES
METAL STUD SOUND WALL



22 4" CONCRETE MASONRY UNITS
CMU WALL (1 AND 2 HOUR FIRE) U.L. ASSEMBLY - U905

23 6" CONCRETE MASONRY UNITS WITH METAL FURRING AND 5/8" GYPSUM BOARD
CMU WALL WITH FURRING

24 6" CONCRETE MASONRY UNITS WITH METAL FURRING AND 5/8" GYPSUM BOARD - BOTH SIDES
CMU WALL WITH FURRING BOTH SIDES

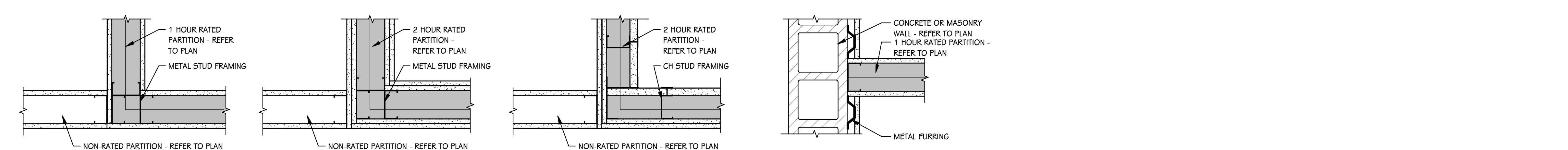
25 8" CONCRETE MASONRY UNITS
WOOD STUD WALL

26 8" CONCRETE MASONRY UNITS WITH METAL FURRING AND 5/8" GYPSUM BOARD
WOOD STUD WALL

27 10" CONCRETE MASONRY UNITS WITH METAL FURRING AND 5/8" GYPSUM BOARD - BOTH SIDES
WOOD STUD CHASE WALL

28 12" CONCRETE MASONRY UNITS WITH METAL FURRING AND 5/8" GYPSUM BOARD - BOTH SIDES
WOOD STUD CHASE WALL (2 HOUR FIRE) U.L. ASSEMBLY U301

INTERIOR PARTITION TYPES
3/4" = 1'-0"

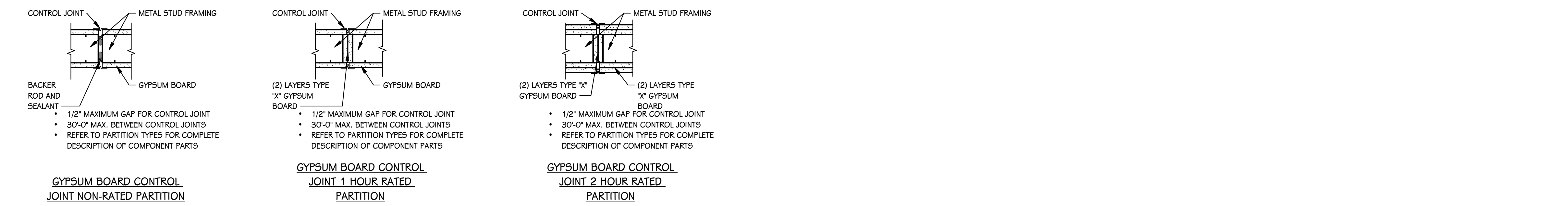


INTERSECTION OF NON-RATED AT 1 HOUR RATED PARTITION

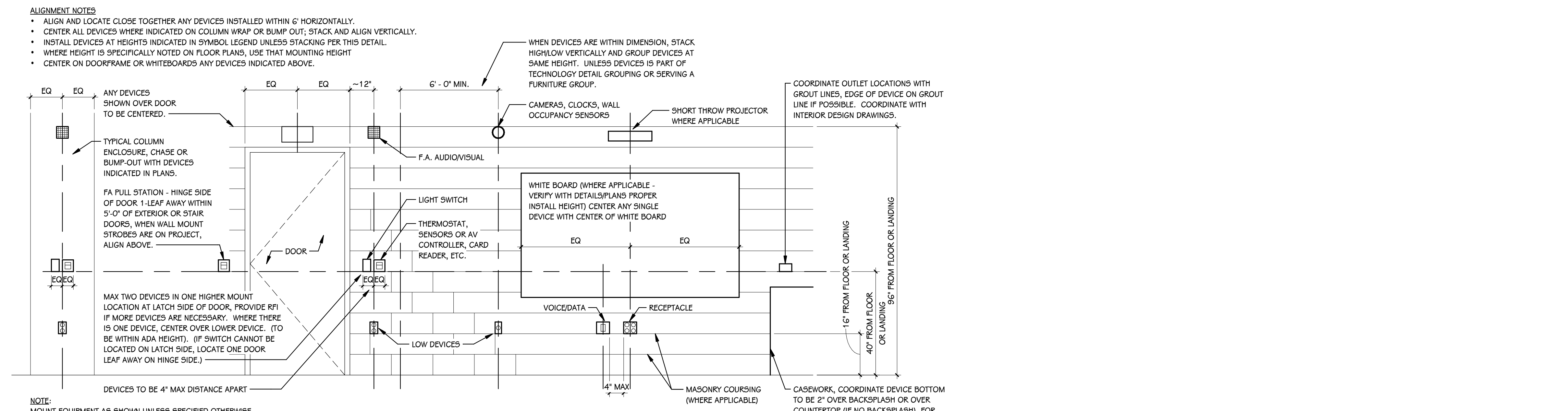
INTERSECTION OF NON-RATED AT 2 HOUR RATED PARTITION - U.L. ASSEMBLY U425

INTERSECTION OF NON-RATED AT 2 HOUR RATED PARTITION - U.L. ASSEMBLY U438

INTERSECTION OF CONCRETE/MASONRY AT 1 HOUR RATED PARTITION



FIRE RATED WALL PLAN DETAILS
SCALE: NONE

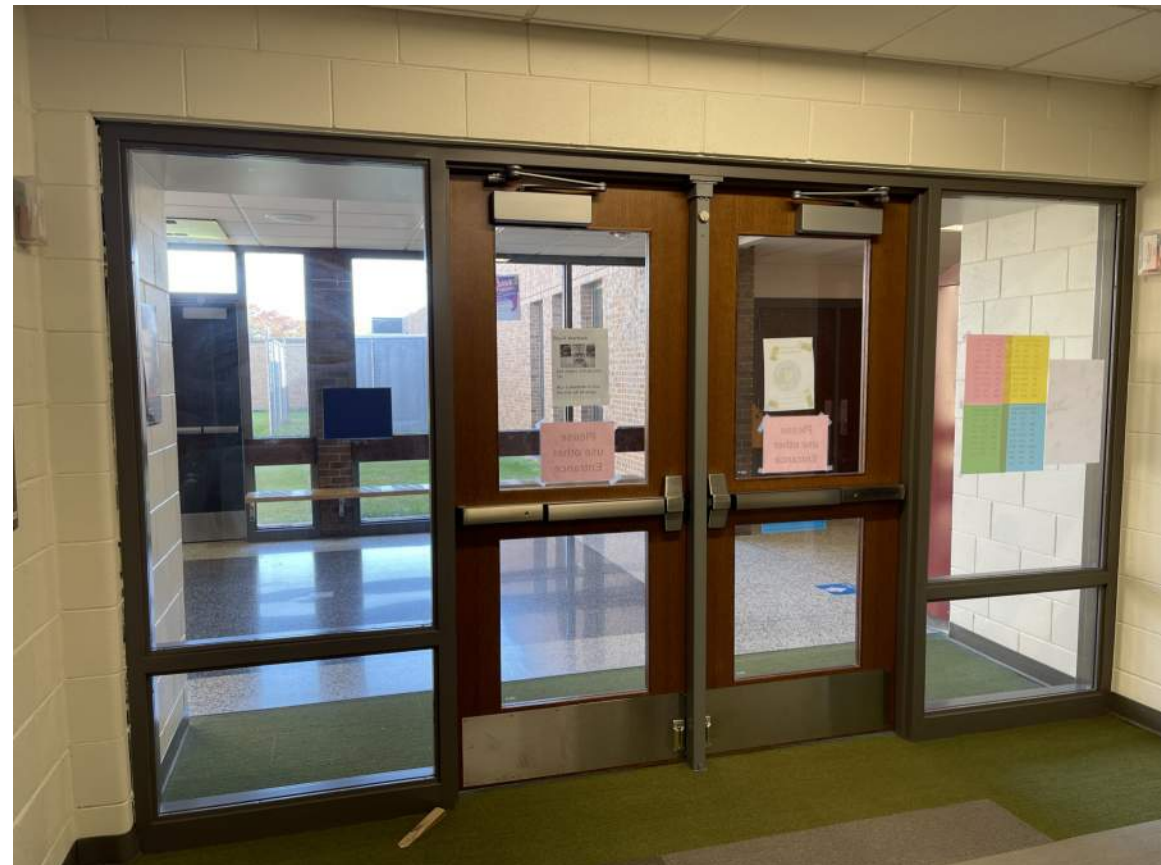


DEVICE ALIGNMENT GUIDELINES
SCALE: NONE

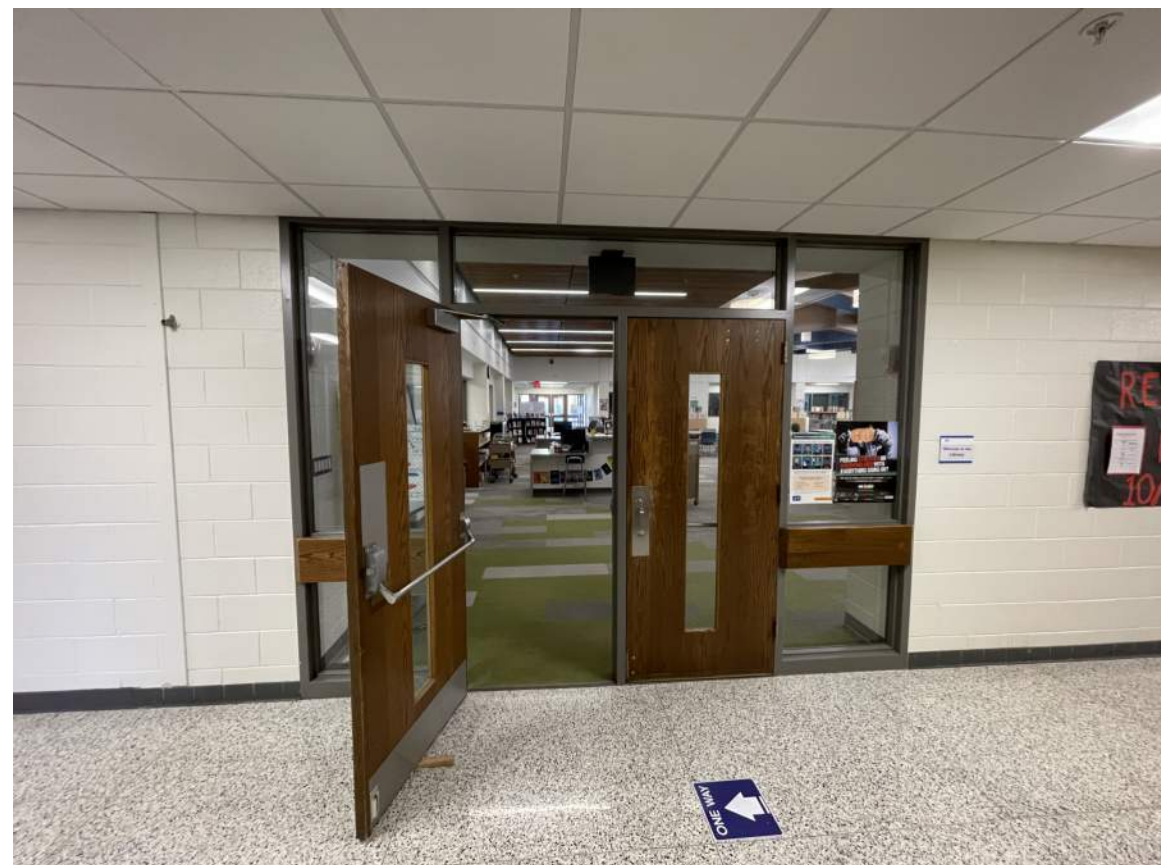
GENERAL NOTES - ARCHITECTURAL - PARTITIONS	GENERAL NOTES - ARCHITECTURAL - DEMOLITION
1 NOT ALL WALL TYPES MAY BE USED ON PROJECT.	1 CONTRACTORS ARE REQUIRED TO INSPECT/REVIEW THE EXISTING BUILDING PRIOR TO RELATED DEMOLITION WORK. UNLESS NOTED OTHERWISE, REMOVAL OF ANY WALL, FLOOR OR CEILING INCLUDES ALL GENERAL MECHANICAL AND ELECTRICAL ITEMS WHICH ARE A PART OF, OR ATTACHED TO IT.
2 REFER TO CODE COMPLIANCE PLANS FOR LOCATIONS OF SMOKE AND FIRE-RATED PARTITIONS.	2 CONTRACTOR SHALL VERIFY ALL EXISTING JOB SITE CONDITIONS AND DIMENSIONS AND BE RESPONSIBLE FOR THE SAME. ADVISE CONSTRUCTION MANAGER OF ANY AND ALL DISCREPANCIES.
3 ALL PARTITIONS EXTEND TO BOTTOM OF STRUCTURE, UNLESS NOTED OTHERWISE.	3 PATCH FLOORS, WALLS AND CEILINGS DAMAGED DURING CONSTRUCTION AND DEMOLITION AS REQUIRED. FINISH TO MATCH EXISTING.
4 LINE OF STRUCTURE/DECK AS SHOWN AT THE HEAD CONDITION OF EACH PARTITION TYPE IS DIAGRAMMATIC ONLY AND DOES NOT INDICATE EXACT CONSTRUCTION CONDITIONS. TERMINATE RATED PARTITIONS AT UNDERSIDE OF STRUCTURAL DECK TO MAINTAIN RATING. PROVIDE APPROPRIATE FRAMING AND GYPSUM BOARD TO OFFSET AROUND STRUCTURE OR OTHER OBSTRUCTIONS, SUCH AS PIPING OR DUCTWORK.	4 ACCOMMODATE NEW CONSTRUCTION IF NOT INDICATED.
5 PARTITIONS MAY TERMINATE AT STRUCTURAL MEMBERS WITH A RATING GREATER THAN OR EQUAL THE PARTITION, PROVIDED THAT RATING IS CONTINUOUS TO STRUCTURAL DECK ABOVE.	5 PROTECT ALL EXISTING FINISHES THROUGHOUT PROJECT.
6 NON-RATED PARTITIONS THAT EXTEND TO STRUCTURE SHALL TERMINATE AT UNDERSIDE OF STRUCTURAL DECK TO MAINTAIN A CONTINUOUS PLANE OF GYPSUM BOARD AS A NOISE, SMOKE OR OTHER TYPE OF BARRIER.	6 REFER TO DEMOLITION ELEVATIONS, SECTIONS AND DETAILS FOR ADDITIONAL INFORMATION.
7 ALL PARTITIONS EXTENDING TO STRUCTURE ABOVE SHALL TERMINATE WITH DEFLECTION TRACK - REFER TO INTERIOR PARTITION TYPE DETAIL ON THIS SHEET.	7 REFER TO STRUCTURAL, MECHANICAL, PLUMBING AND ELECTRICAL PLANS FOR ADDITIONAL DEMOLITION NOTES.
8 ALL GYPSUM BOARD PARTITIONS NOT EXTENDING TO THE STRUCTURE MUST BE BRACED.	8 SALVAGE ALL UNISTRUT AND PROTECT FOR RE-USE IN NEW CONSTRUCTION, IF REQUIRED.
9 UL DESIGN NUMBERS REFER TO THE FIRE RESISTANCE DIRECTORY; UNDERWRITERS LABORATORY, LATEST EDITION.	9 AT LOCATIONS OF REMOVED WALLS, ALL ASSOCIATED ITEMS ATTACHED TO THE WALL ARE TO BE REMOVED. SUCH AS: DOORS, WINDOWS, FRAMES, MARKERBOARDS, TACKBOARDS, TACK STRIPS, ETC.
10 MISCELLANEOUS NON-RATED CHASES TO BE 5/8" GYPSUM BOARD ON 3 5/8" METAL STUD FRAMING AT 16" O.C., UNLESS NOTED OTHERWISE.	
11 MISCELLANEOUS FURRING AROUND COLUMNS TO BE 5/8" GYPSUM BOARD ON 1 1/2" STUDS, UNLESS NOTED OTHERWISE.	
12 FIRE-RATED PARTITIONS TO HAVE FIRE-STOPPING SEALANTS AT HEAD, SILL, JUNCTURE WITH DISSIMILAR MATERIALS, ETC. AND AROUND ALL PENETRATIONS AND OPENINGS.	
13 CONSTRUCT ALL PARTITIONS WITH SOUND ATTENUATION BATTS WITH THE FOLLOWING SOUND BATT THICKNESS: 2 1/2" OR LESS METAL STUD - 1 1/2" THICKNESS, 3 5/8" OR LARGER METAL STUD - 3" THICKNESS. UNLESS NOTED OTHERWISE.	
GENERAL NOTES - ARCHITECTURAL - NEW CONSTRUCTION	
1 THE OWNER RESERVES THE RIGHT TO REMOVE ANY ITEM FROM THE PROJECT PRIOR TO COMMENCEMENT OF CONTRACTED DEMOLITION WORK.	
2 ALL EXISTING CONDITIONS SHOULD BE FIELD VERIFIED BEFORE WORK BEGINS.	
3 DIMENSIONS GIVEN ARE ACTUAL AND ARE TO THE FACE OF MASONRY UNITS OR TO THE FACE OF STUD FRAMING, UNLESS NOTED OTHERWISE.	
4 DETAILS SHOWN ILLUSTRATE DESIGN INTENT, NOT ALL POSSIBLE CONDITIONS. FOR CONDITIONS NOT SHOWN, USE DETAILS CLOSEST TO CONDITION IN QUESTION.	
5 EXTEND ALL INTERIOR WALL PARTITIONS FROM FLOOR TO STRUCTURE/DECK ABOVE UNLESS NOTED OR DETAILED OTHERWISE.	
6 WITHIN BUILDING INTERIOR PROVIDE BULLNOSE BLOCK IN CMU WALL ASSEMBLIES AT ALL EXPOSED OUTSIDE CORNERS, INCLUDING WINDOW AND DOOR JAMBS, UNLESS NOTED OR DETAILED OTHERWISE. PROVIDE SQUARE CORNERS AT ALL LOCATIONS FINISHED WITH WALL TILE. REFER TO FINISH PLANS (1100 SHEETS) FOR LOCATIONS.	
7 TOOTH-IN MASONRY AT NEW OPENINGS IN EXISTING WALLS.	
8 TOOTH-IN NEW MASONRY INFILL INTO EXISTING OPENINGS AT ALL BULLNOSE BLOCK LOCATIONS.	
9 STUD WALLS SPANNING OVER 12'-0" IN HEIGHT SHALL BE A MINIMUM OF 20 GAGE.	
10 STUD WALL SUPPORTING WALL CABINETS SHALL BE A MINIMUM OF 20 GAGE.	
11 DOORS ARE TO BE 4" FROM CORNER OF ROOM, UNLESS NOTED OR DIMENSIONED OTHERWISE.	
12 FIRESTOP ALL INTERCONNECTIONS BETWEEN VERTICAL AND HORIZONTAL SPACES AND CONCEALED WALL SPACES AT CEILING, FLOOR AND ROOF LEVELS.	
13 FIRESEAL ALL PENETRATIONS, SUCH AS, PIPES, DUCTS, CONDUITS, ETC. THROUGH FIRE AND/OR SMOKE RATED ASSEMBLIES.	
14 FOR CONTROL JOINT (C.J.) LOCATIONS REFER TO EXTERIOR ELEVATIONS AND/OR FLOOR PLANS.	
15 PAINT ALL ELECTRICAL PANEL COVERS AND ACCESS PANELS TO MATCH ADJACENT FINISHES. USING OIL-BASED PAINT, NOT LATEX WALL PAINT.	
16 PROVIDE WOOD BLOCKING IN WALLS THAT REQUIRE WALL MOUNTED EQUIPMENT OR ACCESSORIES. COORDINATE WITH EQUIPMENT OR ACCESSORY MANUFACTURER.	
17 REMOVE ALL ASSOCIATED CURBS FOR ROOF TOP EQUIPMENT AND MECHANICAL ROOF TOP UNITS. LARGE VOIDS BELOW THE AIR HANDLING UNITS SHALL BE FILLED WITH INSULATION AS SPECIFIED FOR NOISE CONTROL.	
18 ALL EXISTING ROOF TOP PENETRATIONS BEING REMOVED REQUIRE ROOF PATCHING TO MATCH EXISTING ADJACENT.	
PARTITION STUD KEY - METAL, CH, AND WOOD	
METAL STUD/FURRING	
DESIGNATION	SIZE
A	GYPSUM BOARD DIRECT APPLIED TO CMU
B	7/8"
C	1 1/2"
D	1 5/8"
E	2 1/2"
F	3 1/2"
G	3 5/8"
H	4"
J	5 1/2"
K	6"
L	8"
M	10"
N	12"
P	OPEN
Q	OPEN
METAL STUD/FURRING	
DESIGNATION	SIZE
R	2 1/2"
S	4"
T	6"
METAL STUD/FURRING	
DESIGNATION	SIZE
U	2"x4"
V	2"x6"
W	2"x8"
PARTITION TYPE TAG (REFER TO FLOOR PLANS)	
PARTITION TYPE NUMBER	STUD SIZE DESIGNATION
	FIRE RATING, IF REQUIRED
LIST OF ABBREVIATIONS	
ACP	ACOUSTICAL PANEL CEILING
AFP	ABOVE FINISH FLOOR
ALUM	ALUMINUM
ANOD	ANODIZED
CFMF	COLD FORMED METAL FRAMING
CMU	CONCRETE MASONRY UNIT
CONC	CONCRETE
DCMU	DECOTATIVE CONCRETE MASONRY UNIT
EIPS	EXTERIOR INSULATION AND FINISH SYSTEM
FE	FIRE EXTINGUISHER
FEC	FIRE EXTINGUISHER CABINET
FRT	FIRE RESISTANT TREATED
FV	FIELD VERIFY
GYP BD	GYPSUM BOARD
HM	HOLLOW METAL
LVL	LAMINATED VENEER LUMBER
MCM	METAL COMPOSITE MATERIAL WALL PANEL
OC	ON CENTER
PT	PRESERVATIVE TREATED
PNT	PAINT
SS	STAINLESS STEEL
SSM	SOLID SURFACE MATERIAL
TYF	TYPICAL
VIF	VERIFY IN FIELD
WD	WOOD



CORRIDOR 300



MEDIA CENTER - EAST ENTRANCE



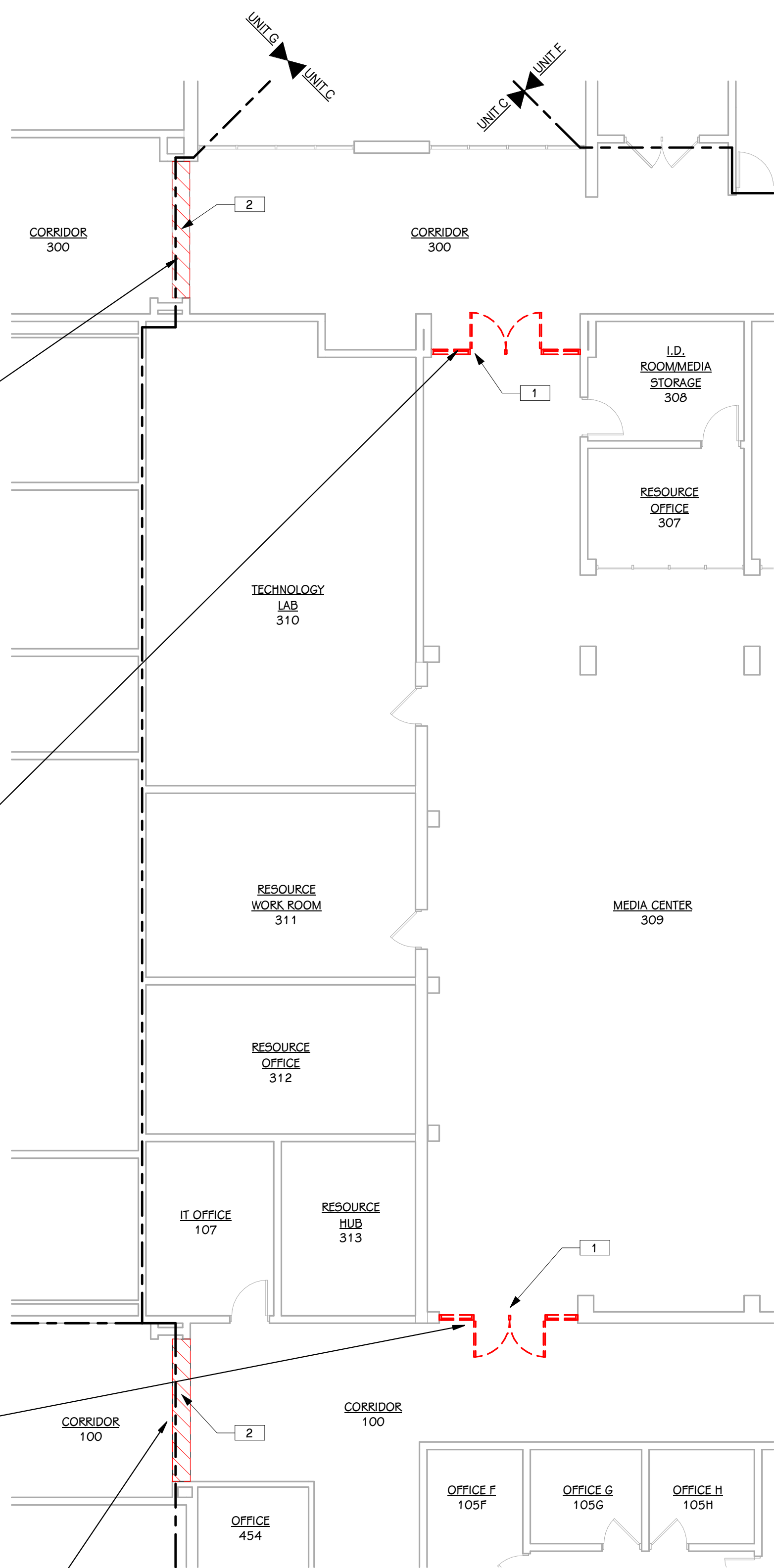
MEDIA CENTER - WEST ENTRANCE



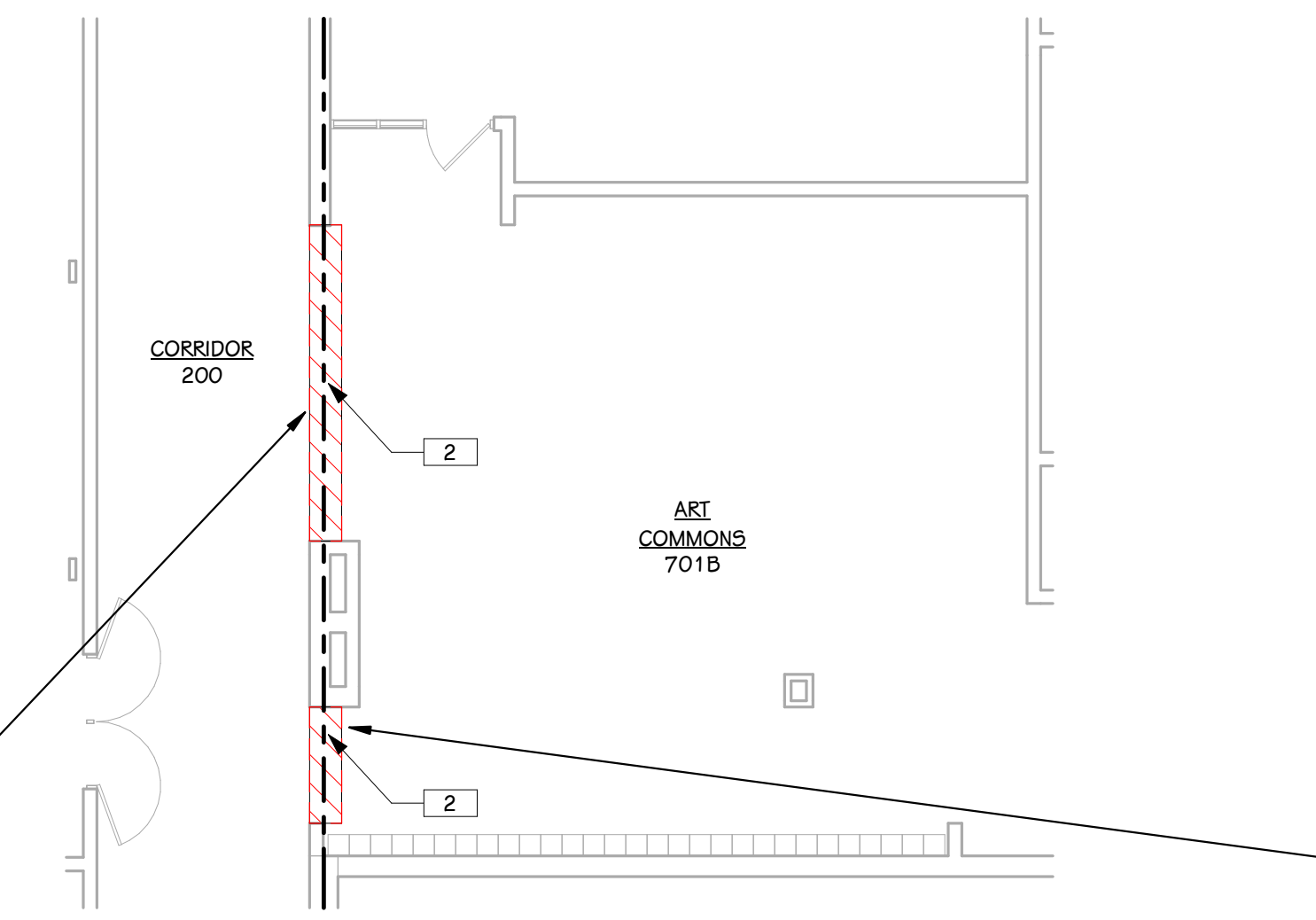
CORRIDOR 100



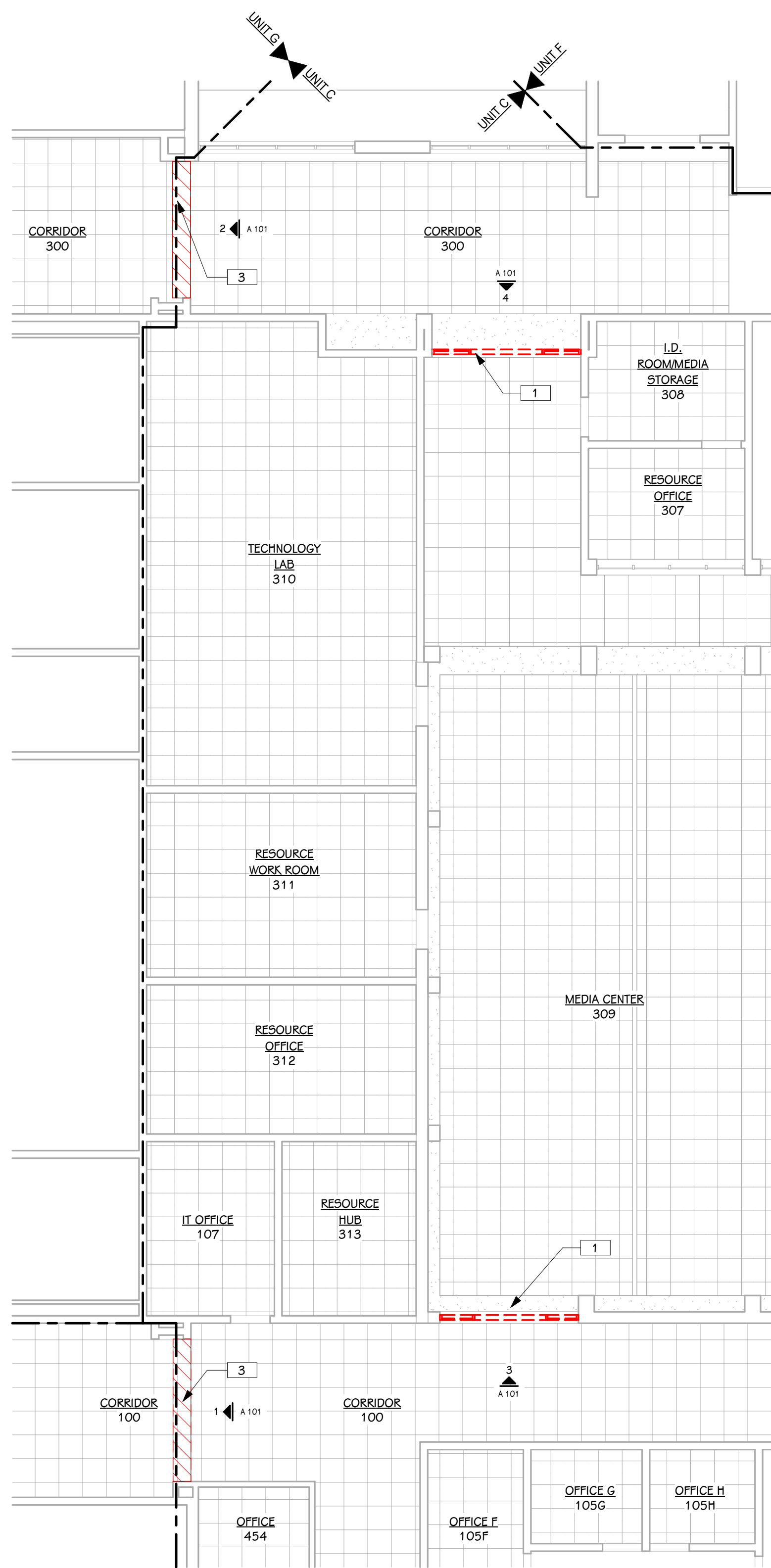
CORRIDOR 200



FIRST FLOOR DEMOLITION PLAN - PARTIAL UNIT C
1/8" = 1'-0"



FIRST FLOOR DEMOLITION PLAN - UNIT E/F
1/8" = 1'-0"



FIRST FLOOR REFLECTED CEILING DEMOLITION PLAN - PARTIAL UNIT C
1/8" = 1'-0"



CORRIDOR 200

- KEYED NOTES - ARCHITECTURAL - DEMOLITION**
- 1 REMOVE AND DISCARD HOLLOW METAL FRAME AND HARDWARE, PREPARE OPENING FOR NEW SYSTEM.
 - 2 PREPARE FLOOR FOR NEW STOREFRONT SYSTEM. COORDINATE WITH NEW CONSTRUCTION AND PROTECT EXISTING TO REMAIN.
 - 3 REMOVE AND DISCARD CEILING PANELS, GRID, AND SUSPENSION SYSTEM AS REQUIRED FOR NEW CONSTRUCTION. PROTECT EXISTING TO REMAIN.

ISSUED FOR DATE

PROJECT TITLE
WEST MIDDLE SCHOOL - BID PACKAGE 2:
DISTRICT WIDE ACCESS CONTROL

OWNER
PORTAGE PUBLIC SCHOOLS

Portage, Michigan

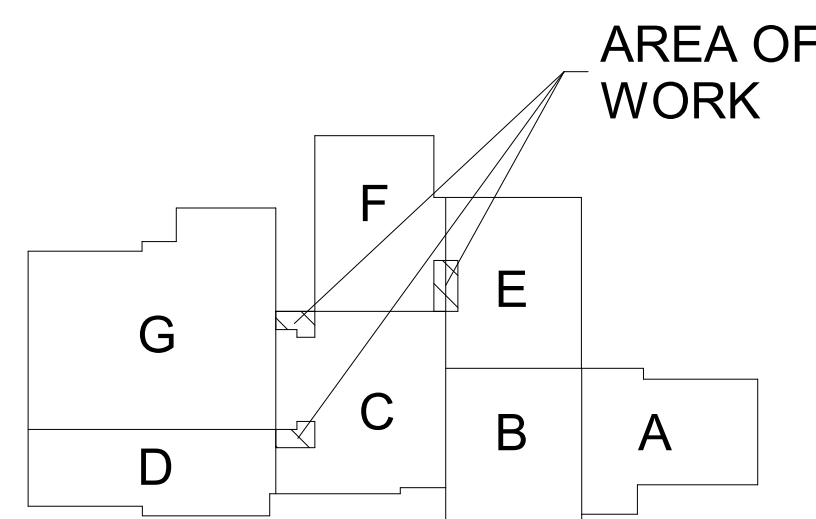
SHEET TITLE
FIRST FLOOR DEMOLITION PLAN &
REFLECTED CEILING DEMOLITION PLAN

DATE
FEBRUARY 16, 2024

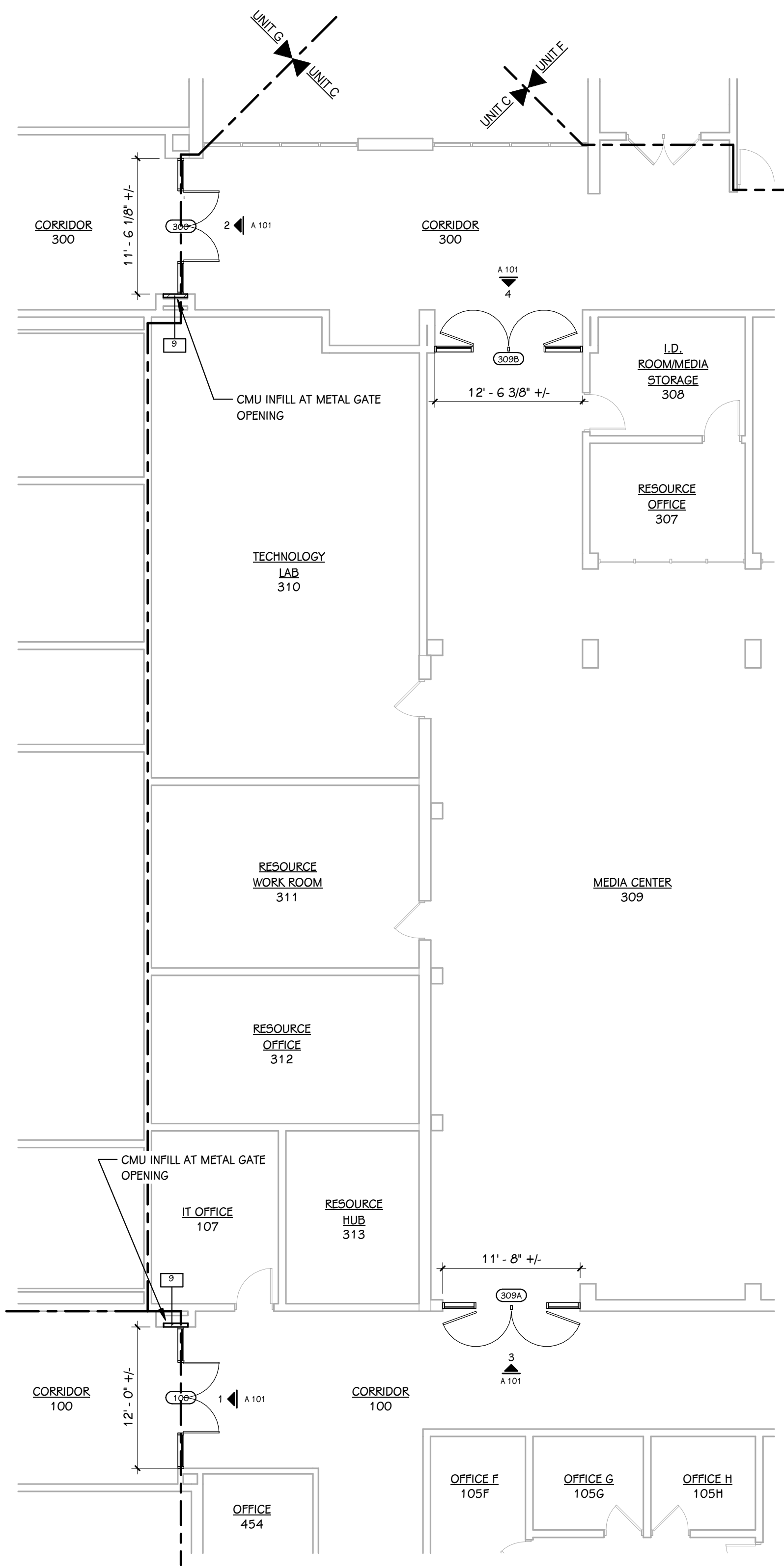
SHEET NUMBER
AD 101
23-214.70

THIS DRAWING SHEET IS INTENDED TO BE PLOTTED IN COLOR. IF THIS TEXT APPEARS IN BLACK AND WHITE, IT IS PLOTTED INCORRECTLY. DISCARD AND OBTAIN AN ACCURATE DRAWING

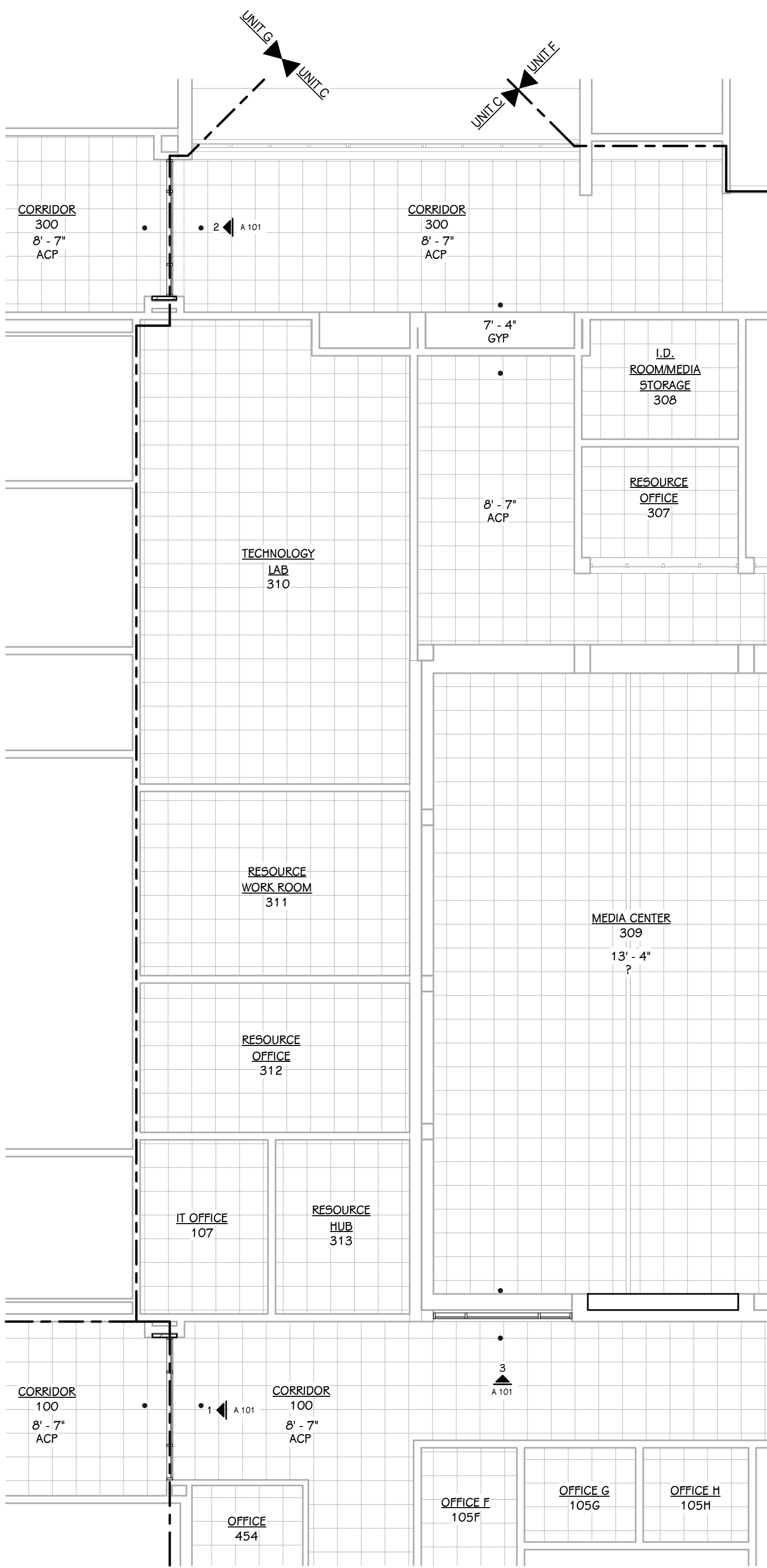
WEST MIDDLE SCHOOL



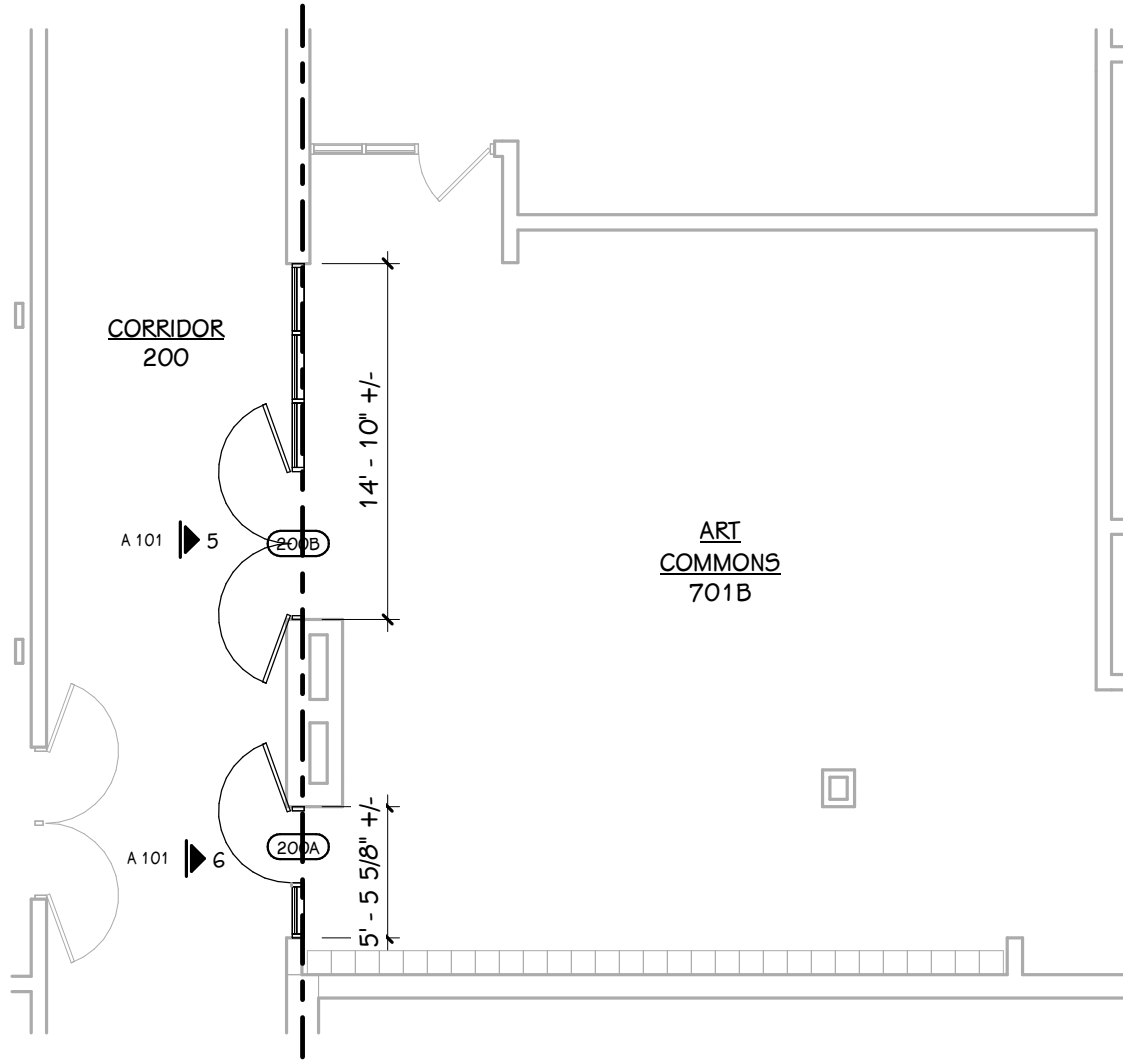
KEY PLAN
SCALE: NO SCALE



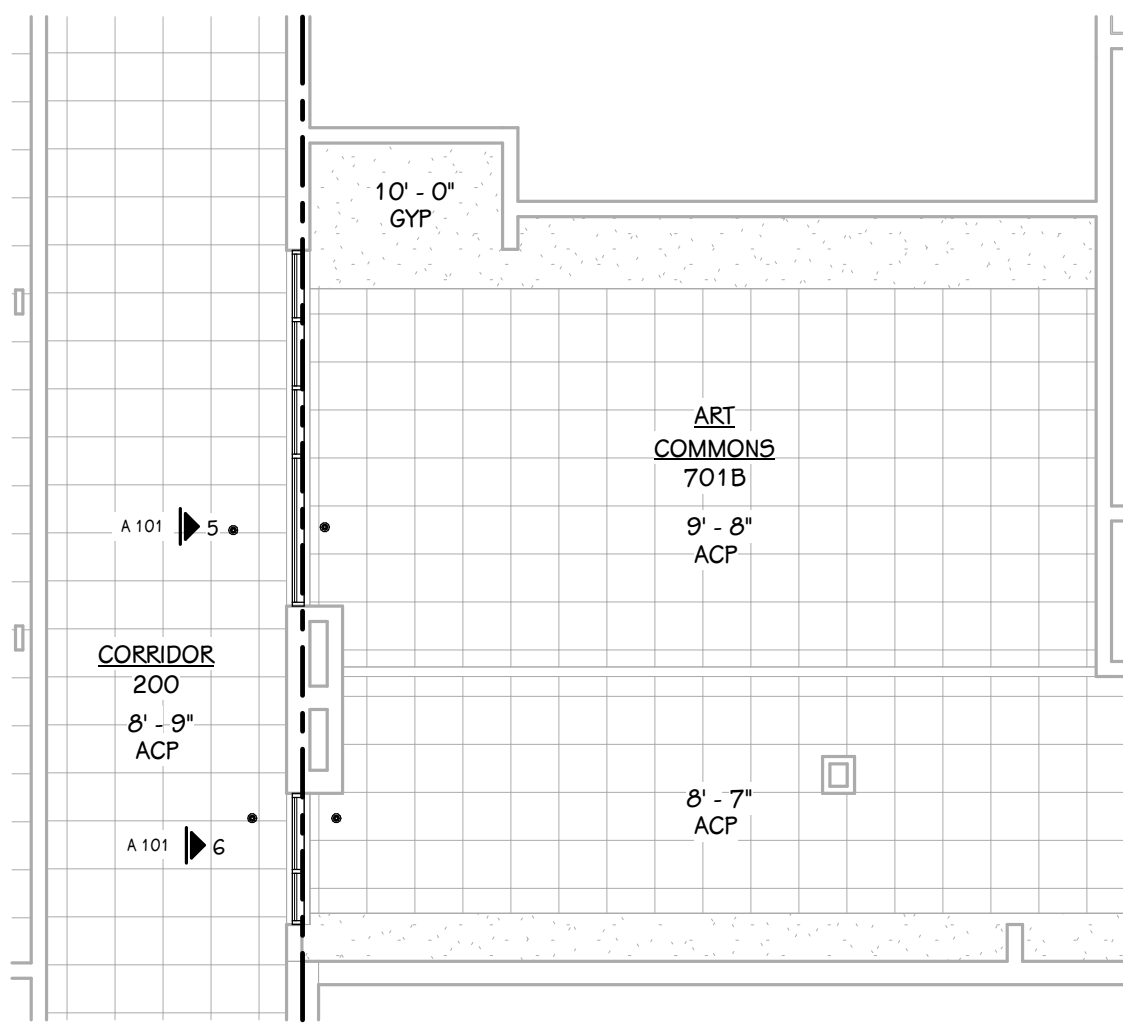
 **FIRST FLOOR PLAN - PARTIAL UNIT C**
1/8" = 1'-0"



 **FIRST FLOOR REFLECTED CEILING PLAN - PARTIAL UNIT C**
1/8" = 1'-0"



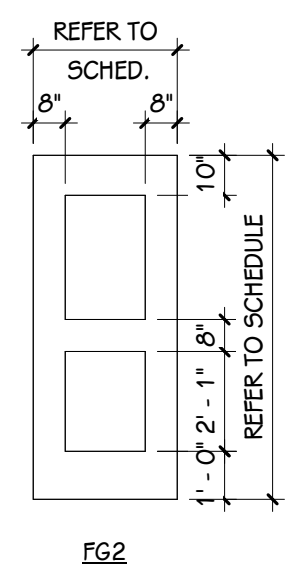
 **FIRST FLOOR PLAN - PARTIAL UNIT E/F**
1/8" = 1'-0"



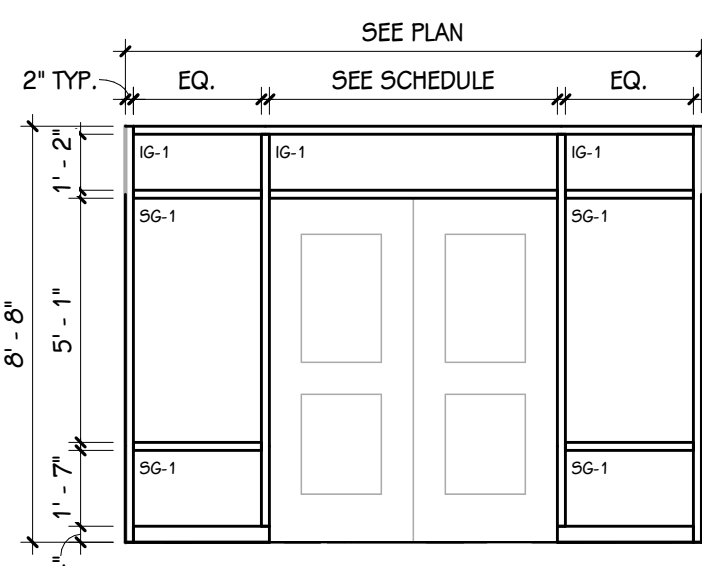
 **FIRST FLOOR REFLECTED CEILING PLAN - PARTIAL UNIT E/F**
1/8" = 1'-0"

FIRST FLOOR DOOR SCHEDULE

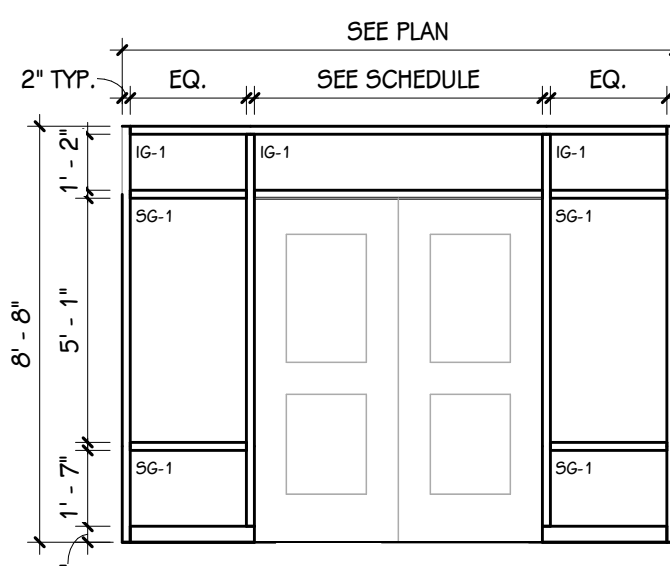
NUMBER		ROOM NAME	FIRE RATING		DOOR			SIZE		FRAME			DETAILS			GLASS	ACCESS CONTROLS					HDWR. SET	REMARKS
DOOR	ROOM		DOOR	FRAME	TYPE	MAT	FIN	WIDTH	HEIGHT	ELEV	MAT	FIN	HEAD	JAMB	SILL		A-PHONE	BARRIER-F REE	CARD READER	ELEC. LOCK HDWR.	MAG HOLD		
100	100	CORRIDOR	-	-	FG2	HM	P-?	6'-0"	7'-2"	1	HM	P-?	-	-	-	-	No	No	Yes	Yes	Yes	-	-
300	300	CORRIDOR	-	-	FG2	HM	P-?	6'-0"	7'-2"	2	HM	P-?	-	-	-	-	No	No	Yes	Yes	Yes	-	-
309A	309	MEDIA CENTER	-	-	FG2	HM	P-?	6'-0"	7'-2"	3	HM	P-?	-	-	-	-	No	No	Yes	Yes	No	-	-
309B	309	MEDIA CENTER	-	-	FG2	HM	P-?	6'-0"	7'-2"	4	HM	P-?	-	-	-	-	No	No	Yes	Yes	No	-	-
200A	701B	ART COMMONS	-	-	FG2	HM	P-?	3'-0"	7'-2"	6	HM	P-?	-	-	-	-	No	No	Yes	Yes	No	-	-
200B	701B	ART COMMONS	-	-	FG2	HM	P-?	6'-0"	7'-2"	5	HM	P-?	-	-	-	-	No	No	Yes	Yes	No	-	-



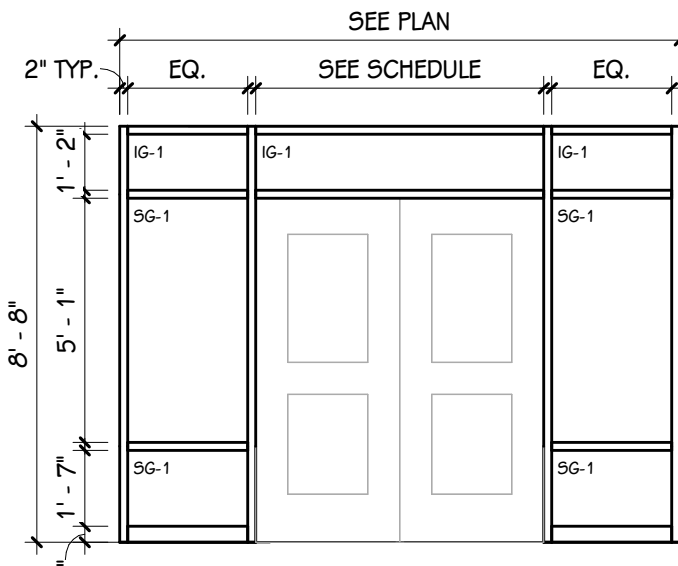
DOOR PANEL ELEVATION
1/4" = 1'-0"



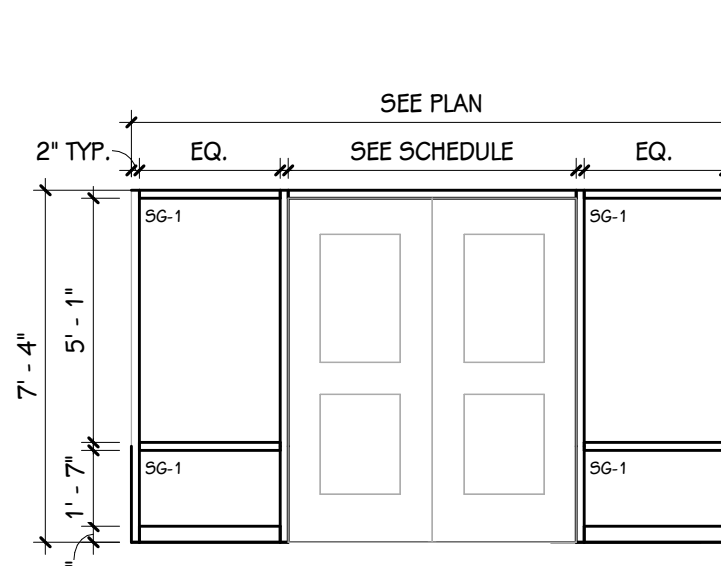
FRAME ELEVATIONS
1/4" = 1'-0"



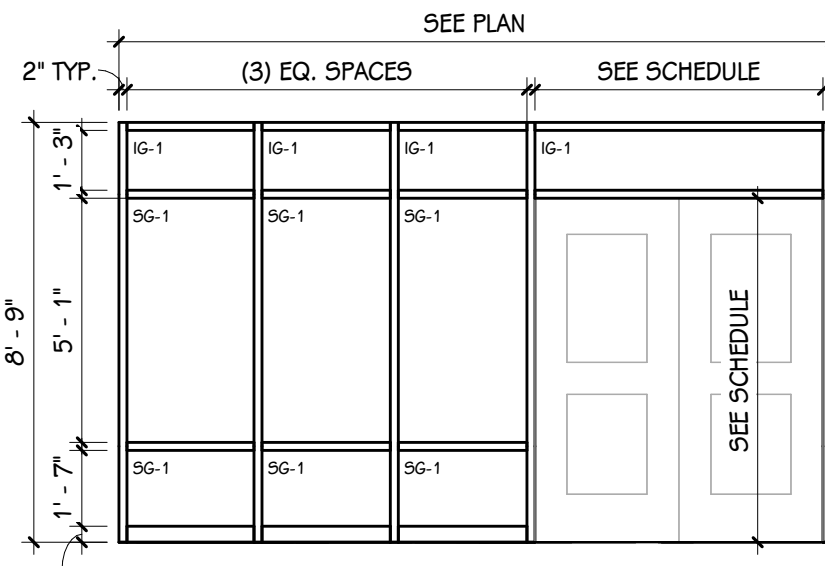
2



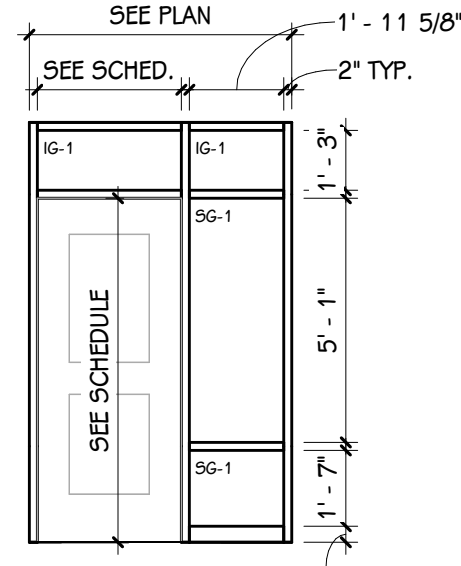
3



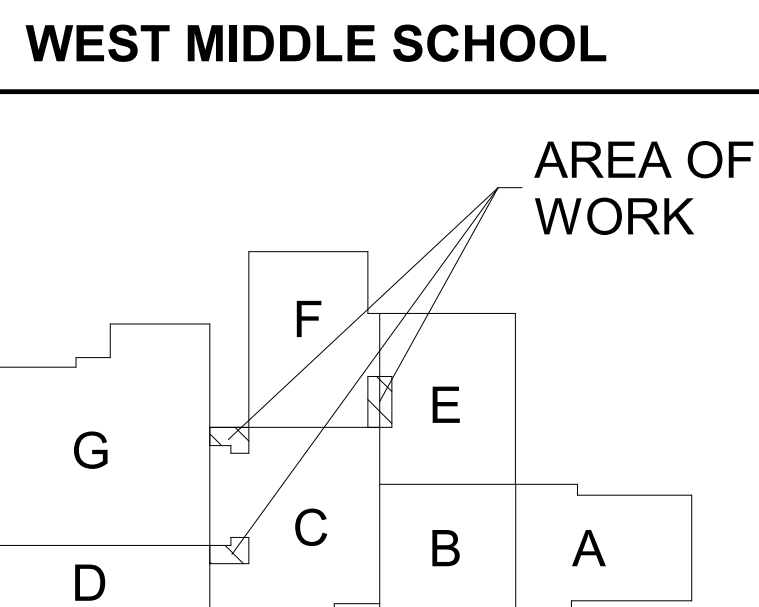
4



5



6



 **KEY PLAN**
SCALE: NO SCALE

SHEET TITLE
FIRST FLOOR PLAN & REFLECTED
CEILING PLAN

OWNER
PORTAGE PUBLIC SCHOOLS

PROJECT TITLE
WEST MIDDLE SCHOOL - BID PACKAGE 2:
DISTRICT WIDE ACCESS CONTROL

ISSUED FOR

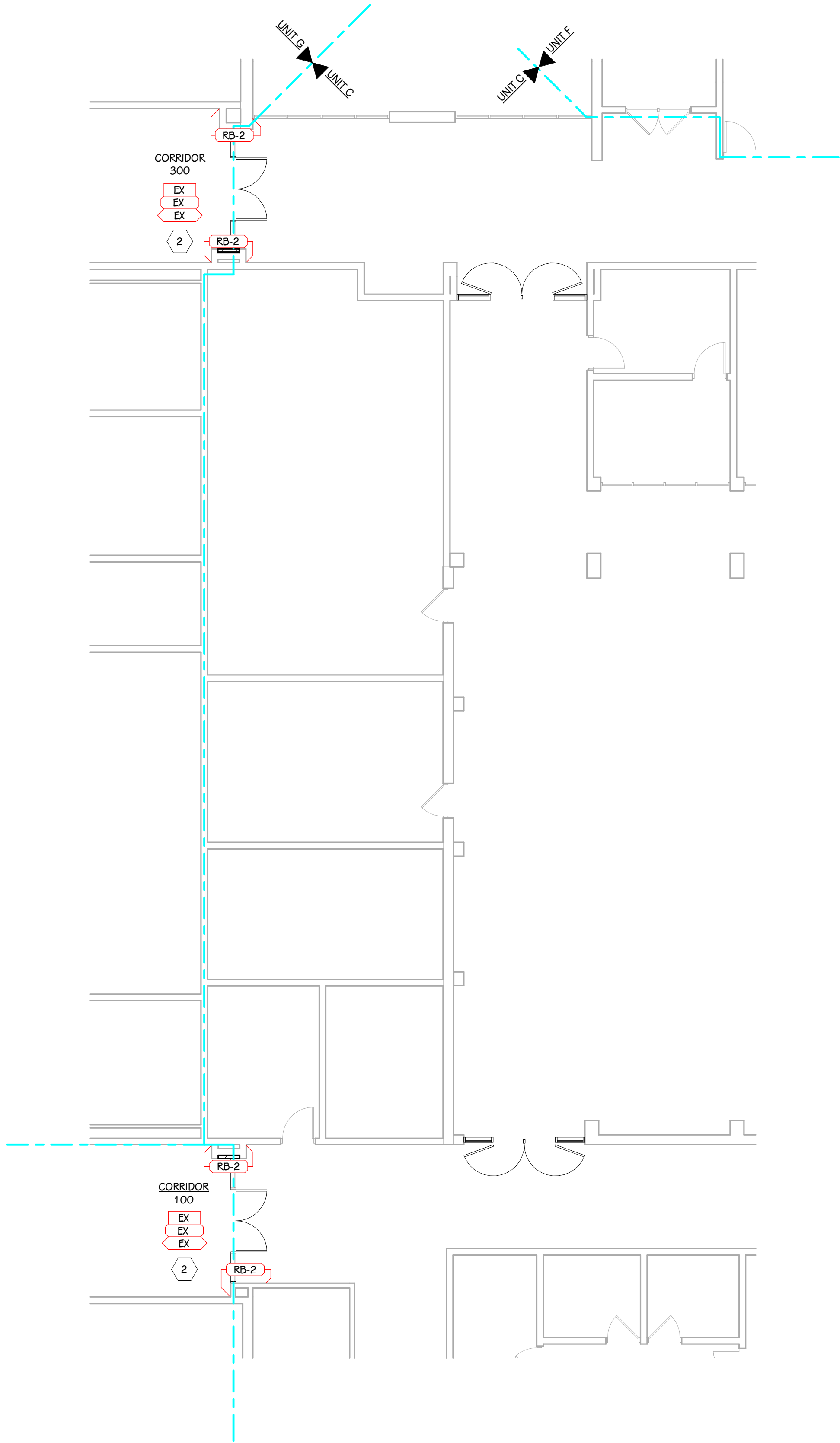
SHEET NUMBER
A 101
23-214.70

Portage, Michigan

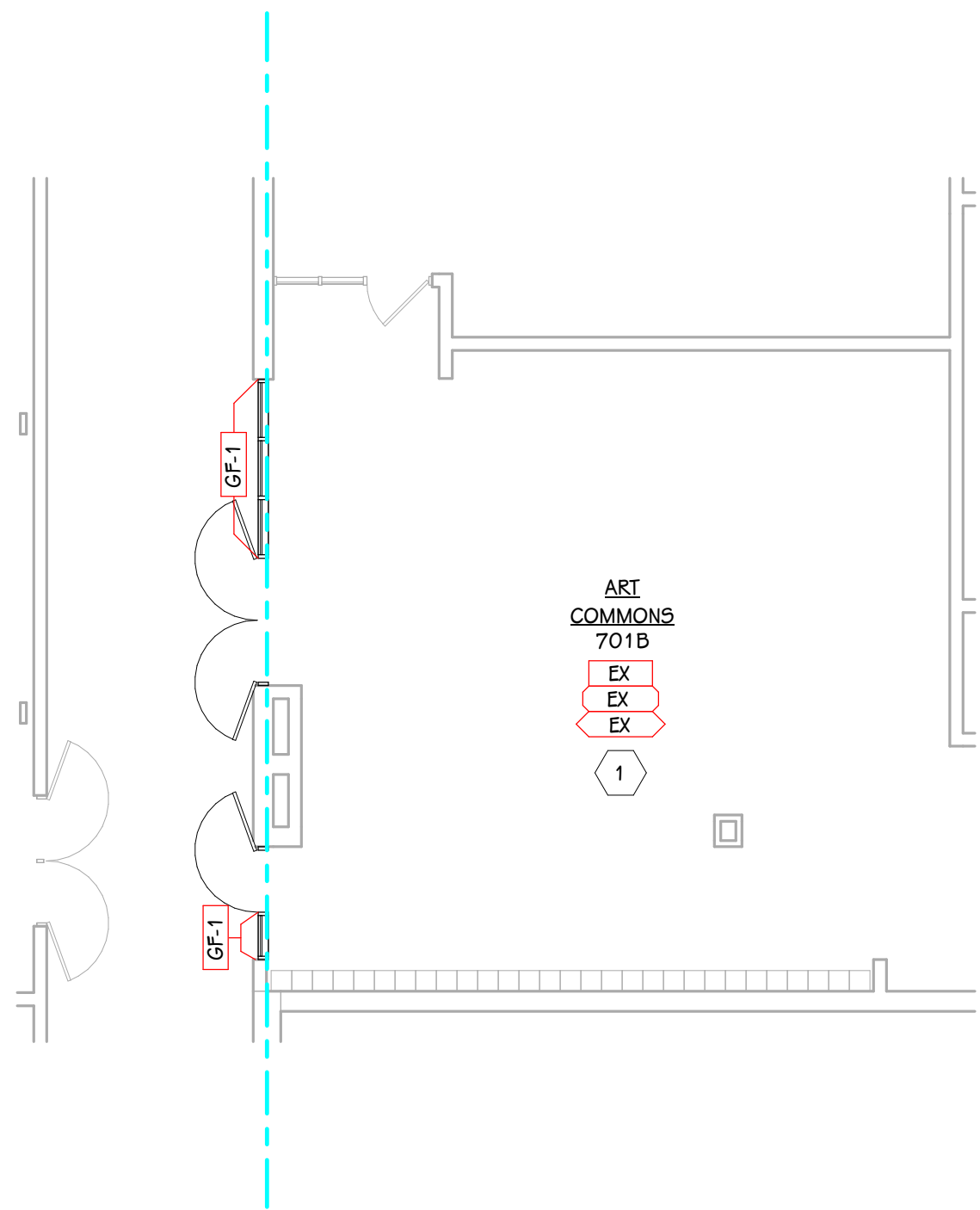
DATE
FEBRUARY 16, 2024

MATERIAL SELECTION SCHEDULE										
ABBREV	ITEM	MANUFACTURER	PATTERN	COLOR	PRODUCT NO.	SIZE	SINGLE SOURCE	BASIS OF DESIGN	ADDITIONAL MANUFACTURERS	REMARKS
ACP-1	ACOUSTIC CEILING PANEL	ARMSTRONG	ULTIMA	WHITE	1911	24" X 24"	X		--	BEVELED TENGULAR
GF-1	GLASS FILM	3M	FASARA	CLOUD GRADIENT	5H2FGCL	50" W X 96.4" L ROLL	X		--	INSTALL GRADIENT WITH FROST AT BOTTOM MULLION
P-1	PAINT	SHERWIN WILLIAMS	--	DOVER WHITE	5W 6385	--	X		--	--
P-2	PAINT	SHERWIN WILLIAMS	--	GAUNTLET GREY	5W 7019	--	X		--	--
RB-1	RUBBER BASE	TARKEETT / JOHNSONITE	TRADITIONAL DURACOVE - WITH TOE	MOON ROCK - 29	DC 29 4	4" HIGH	X		--	DOOR FRAMES
RB-2	RUBBER BASE	TARKEETT / JOHNSONITE	TRADITIONAL DURACOVE - WITH TOE	BLACK - 40	DC 40 4	4" HIGH		X	ROPPEE, MANNINGTON, FLEXCO	--
GENERAL NOTES - MATERIAL SELECTION SCHEDULE										
1 NO COMPARABLE PRODUCTS OR PRODUCT SUBSTITUTIONS WILL BE REVIEWED FOR PRODUCTS DESIGNATED AS SINGLE SOURCE.										
2 COMPARABLE PRODUCTS WILL BE REVIEWED FOR ITEMS LISTED AS BASIS OF DESIGN. COMPARABLE PRODUCTS ARE REQUIRED TO MEET ANY MINIMUM PERFORMANCE REQUIREMENTS LISTED IN REMARKS AND APPEARANCE OF SPECIFIED PRODUCT.										
3 REFER TO TYPICAL DETAILS AND PRODUCT SPECIFICATION FOR TRIMS AND ACCESSORIES ASSOCIATED WITH SPECIFIED PRODUCTS ABOVE.										

NOTES - FINISH PLANS	
1	FINISH TAGS APPLY TO LIKE MATERIALS IN ENTIRE ROOM. I.E. CASEWORK TAG MAY ONLY CALLOUT ONE RUN OF CASEWORK, BUT ALL CASEWORK IN ROOM RECEIVE THE SAME FINISHES, UNLESS TAGGED DIFFERENTLY.
2	CASEWORK FINISH TAGS DO NOT APPLY TO CUSTOM MILLWORK PIECES. REFER TO ENLARGED MILLWORK DETAILS FOR FINISH MATERIALS.
3	REFER TO ENLARGED FINISH PLANS AND PATTERN PLANS FOR ADDITIONAL FINISH DETAILS.
4	DASHED LINE INDICATES LINE OF CEILING ABOVE, REFER TO REFLECTED CEILING PLANS.
5	WHERE NO FINISH TAG IS SHOWN ALL EXISTING FINISHES ARE TO REMAIN, UNLESS OTHERWISE NOTED.
KEYED NOTES - INTERIOR - FINISH PLAN	
1	PATCH AND TOUCH UP WALL FINISHES WITH P-1 AND RB-1 AS NEEDED
2	PATCH AND TOUCH UP WALL PAINT AS NEEDED WITH P-1

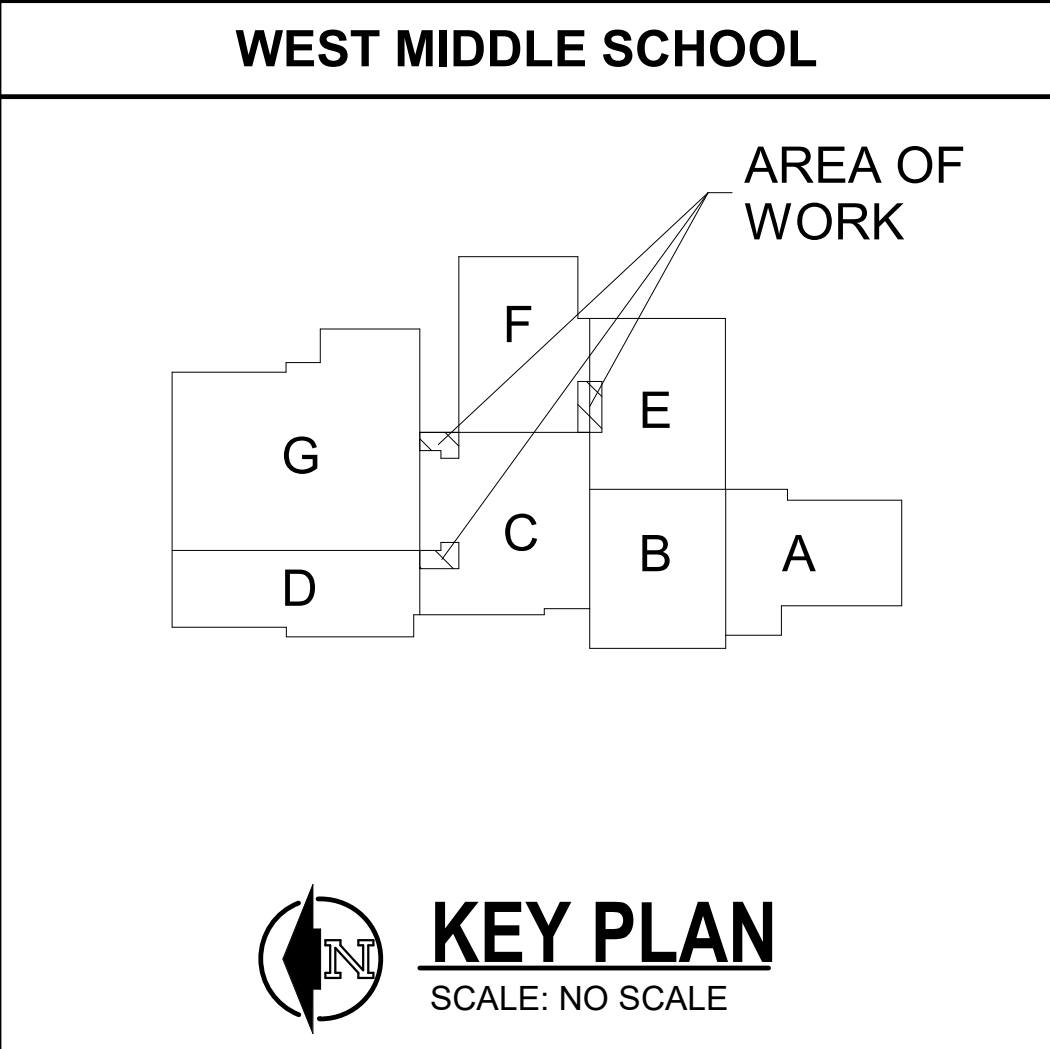


 FIRST FLOOR FINISH PLAN - UNIT C
1/8" = 1'-0"



 FIRST FLOOR FINISH PLAN - UNIT E
1/8" = 1'-0"

THIS DRAWING SHEET IS INTENDED TO BE PLOTTED IN COLOR. IF THIS TEXT APPEARS IN BLACK AND WHITE, IT IS PLOTTED INCORRECTLY. DISCARD AND OBTAIN AN ACCURATE DRAWING



 KEY PLAN
SCALE: NO SCALE

ISSUED FOR

DATE

PROJECT TITLE

WEST MIDDLE SCHOOL - BID PACKAGE 2:
DISTRICT WIDE ACCESS CONTROL

OWNER

PORTAGE PUBLIC SCHOOLS

Portage, Michigan

SHEET TITLE

MATERIAL SELECTION SCHEDULE &
FIRST FLOOR FINISH PLAN - UNIT C

DATE

FEBRUARY 16, 2024

SHEET NUMBER

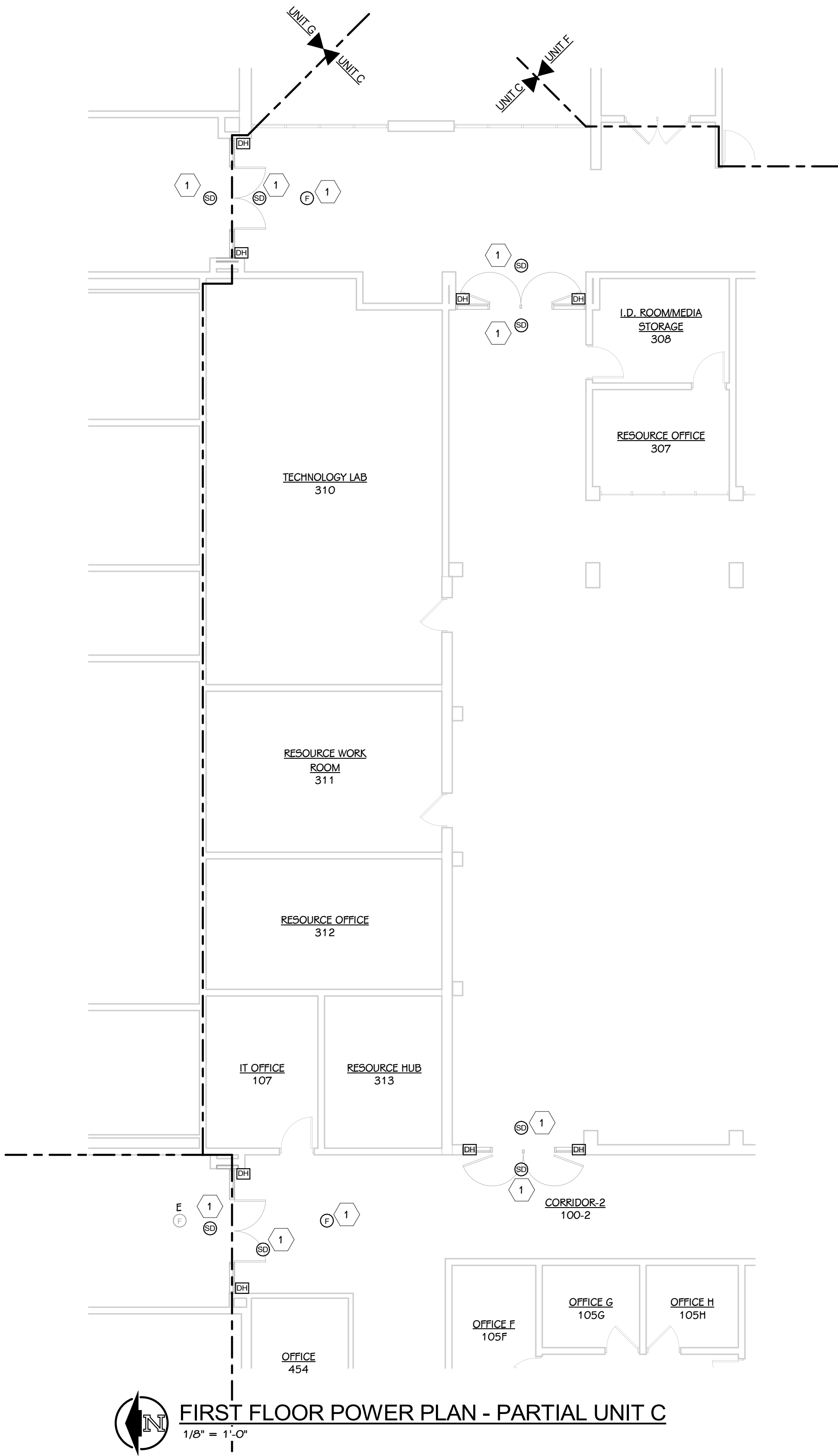
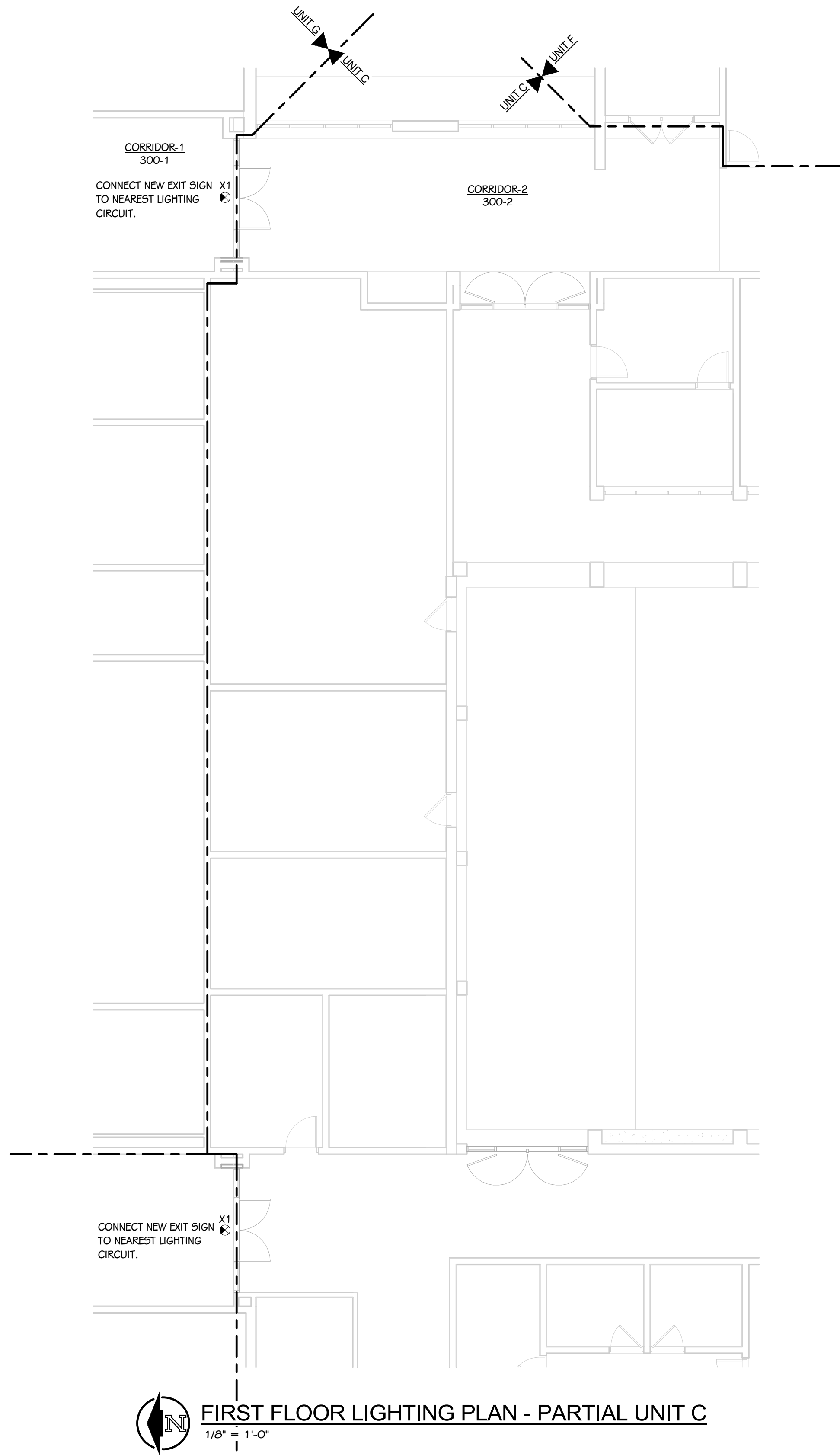
I 101C

23-214.70

ELECTRICAL ABBREVIATIONS

(#)	# INDICATES QUANTITIES (I.E. (4) 3" CONDUITS MEANS FOUR 3" DIAMETER CONDUITS)
(E)	EXISTING
AF/C	ABOVE FINISHED CEILING
AFCI	ARC FAULT CIRCUIT INTERRUPTER
AFF	ABOVE FINISHED FLOOR
AJ	AUTHORITY HAVING JURISDICTION
AIC	AMPERE INTERRUPTING CAPACITY
AL	ALUMINUM
AWG	AMERICAN WIRE GAUGE
BAS	BUILDING AUTOMATION SYSTEM
BMS	BUILDING MANAGEMENT SYSTEM
C	CONDUIT
CT	CURRENT TRANSFORMER
CU	COPPER
DFA	DROP FROM ABOVE
DW	DISHWASHER
EM	EMERGENCY
ET	ELECTRONIC TRIP
EW/C	ELECTRIC WATER COOLER
FDS	FUSIBLE DISCONNECT SWITCH
GAP	GENERATOR ANNUNCIATOR PANEL
GD	GARBAGE DISPOSAL
GEC	GROUNDING ELECTRODE CONDUCTOR
GFCI	GROUND FAULT CIRCUIT INTERRUPTER, 5mA
GFP	GROUND FAULT PROTECTION OF EQUIPMENT, 30mA
GRD	GROUND
IAW	IN ACCORDANCE WITH
IC	INSULATION CONTACT
IDF	INTERMEDIATE DISTRIBUTION FRAME
JB	JUNCTION BOX
KCMIL	THOUSANDS OF CIRCULAR MILS
LCP	LIGHTING CONTROL PANEL
MDF	MAIN DISTRIBUTION FRAME
NFDS	NON-FUSIBLE DISCONNECT SWITCH
NIC	NOT IN CONTRACT
NL	NIGHT LIGHT
NTS	NOT TO SCALE
OC	ON CENTER
PB	PULL BOX
REF	REFRIGERATOR
RT	RAINTIGHT
SPD	SURGE PROTECTIVE DEVICE
TR	TAMPER RESISTANT
TTB	TELECOMMUNICATIONS TERMINAL BOARD
TX	TRANSFORMER
TYP	TYPICAL
UL-5E	UL SERVICE ENTRANCE RATED
UON	UNLESS OTHERWISE NOTED
WP	WEATHERPROOF

[illegible]

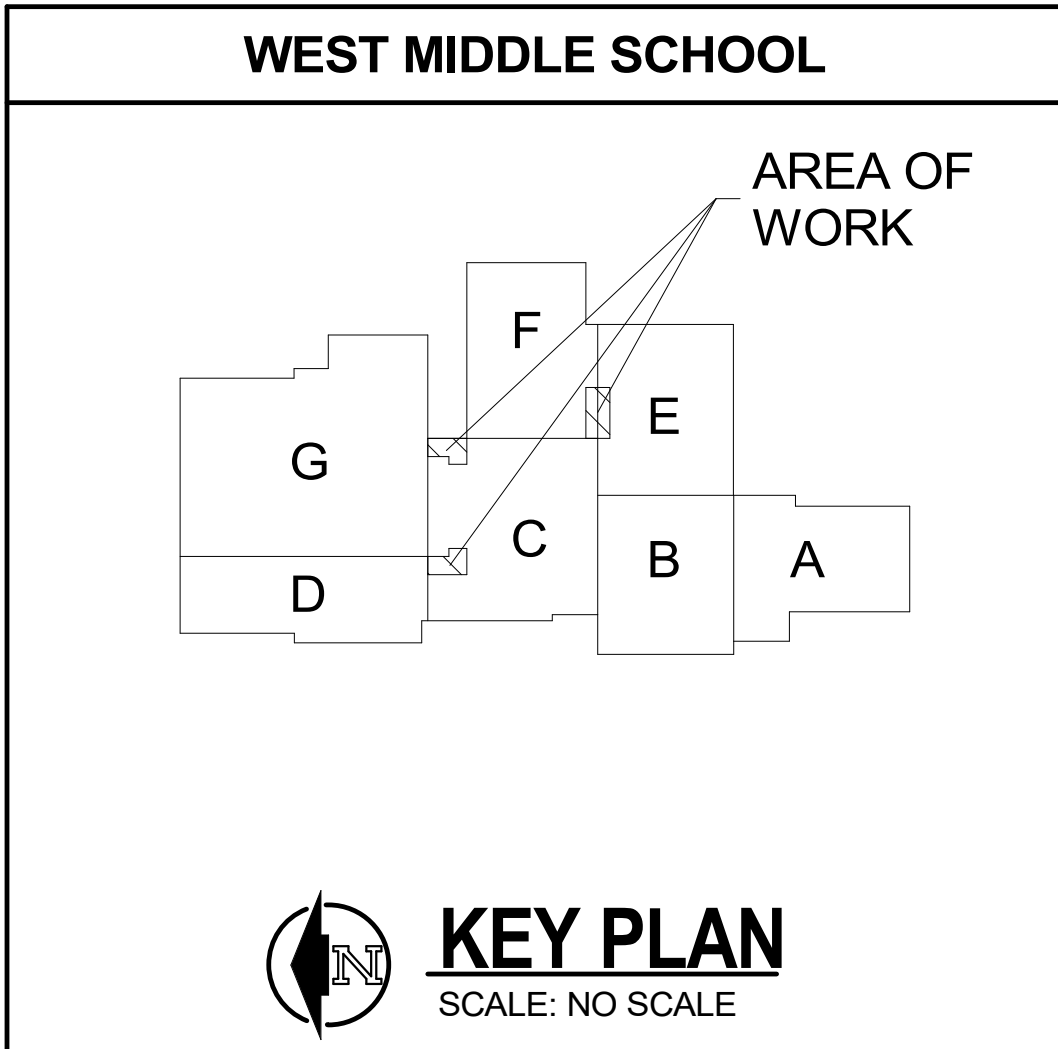


LIGHT FIXTURE SCHEDULE								
TYPE	SERIES	DESCRIPTION	MOUNTING	CEILING TYPE	DRIVER	WATTS	MANUFACTURER	NOTES
X1	X1	EXIT SIGN - EDGE LIT	SURFACE	ACOUSTIC GRID	N/A	5 VA	UTHONIA #EDG-W-1-R-EL	1, 2

1 ALL LED FIXTURES TO HAVE WARRANTY TO MEET OR EXCEED WARRANTY INCLUDED IN BASIS OF DESIGN. FIXTURES LISTED AS EQUALS SHALL MEET DELIVERED LUMENS, CRI, EFFICACY AND OPTIONS OF THAT SPECIFIED. REFER TO SPECIFICATIONS 265.100 AND 265.600 FOR ADDITIONAL REQUIREMENTS.

2 THE MOUNTING DESCRIPTION IS GENERAL. REFER TO SHOP DRAWINGS AND MANUFACTURER'S INSTALLATION INSTRUCTIONS FOR SPECIFIC MOUNTING DETAILS.

KEYED NOTES - ELECTRICAL - POWER	
1	ADD NEW FIRE ALARM DEVICE TO EXISTING SYSTEM. RETAIN SERVICES OF FIRE ALARM PROVIDER FOR MODIFICATION TO EXISTING FIRE ALARM SYSTEM. PROVIDE ALL HARDWARE FOR A COMPLETE INSTALLATION.



ISSUED FOR DATE

PROJECT TITLE
WEST MIDDLE SCHOOL - BID PACKAGE 2:
DISTRICT WIDE ACCESS CONTROL

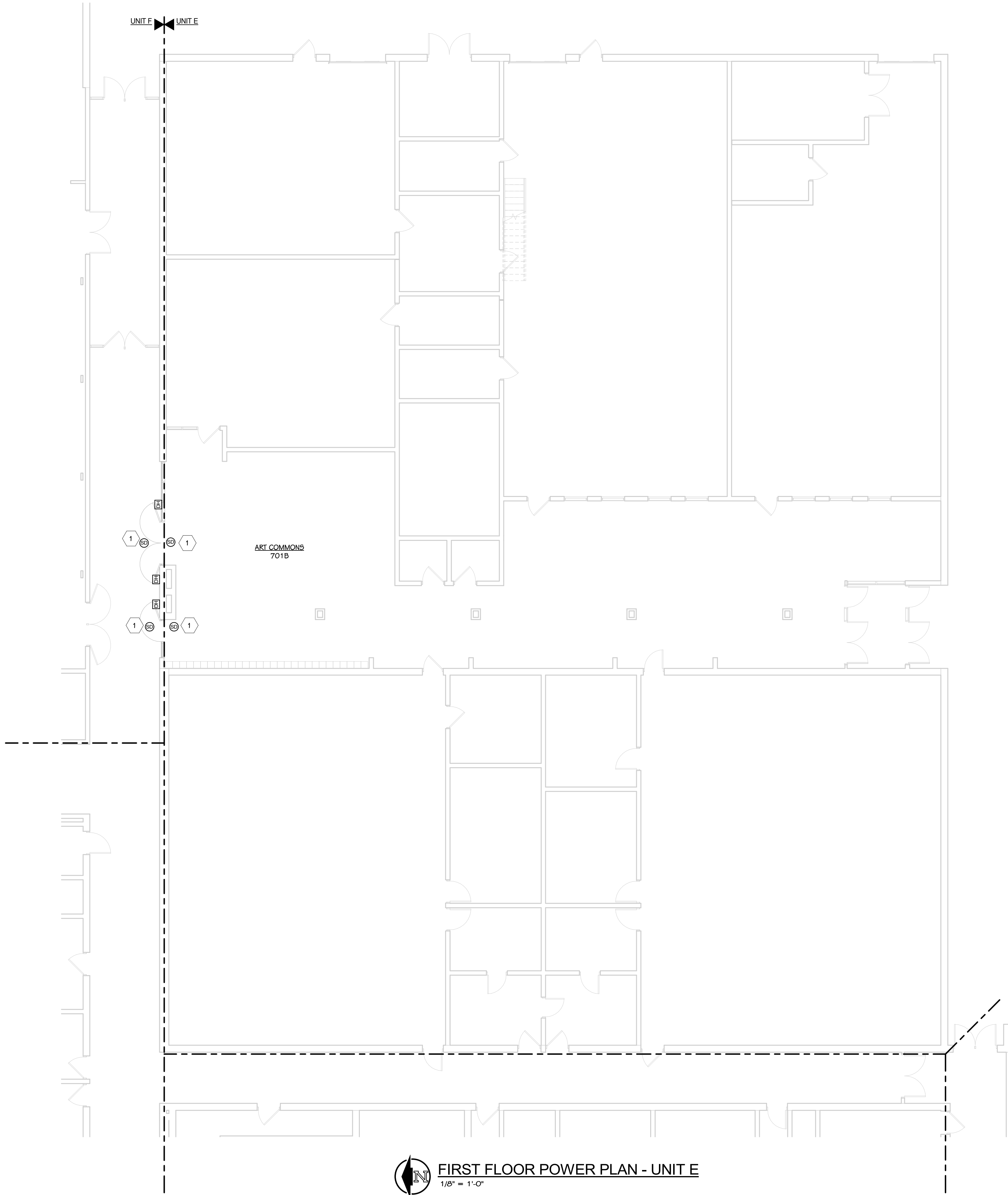
OWNER
PORTAGE PUBLIC SCHOOLS

Portage, Michigan

SHEET TITLE
FIRST FLOOR PLAN - UNIT C

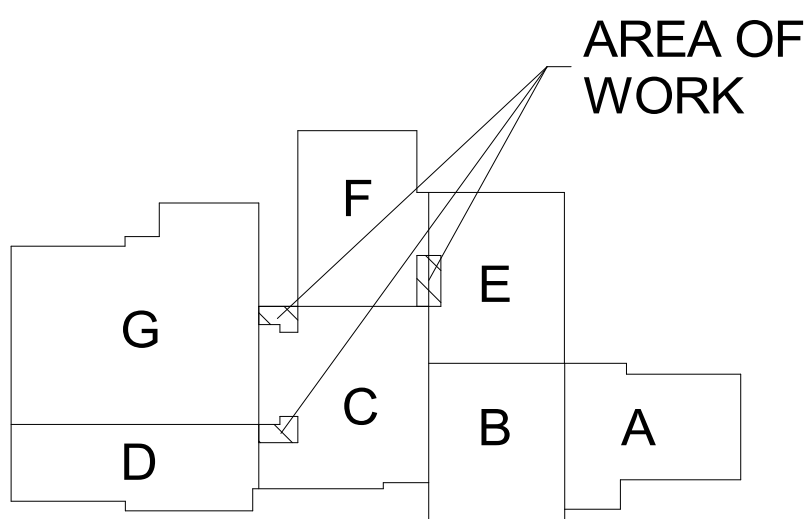
DATE
FEBRUARY 16, 2024

SHEET NUMBER
E 101C
23-214.70



FIRST FLOOR POWER PLAN - UNIT E

1/8" = 1'-0"



KEY PLAN
SCALE: NO SCALE

KEYED NOTES - ELECTRICAL - POWER

- 1 ADD NEW FIRE ALARM DEVICE TO EXISTING SYSTEM. RETAIN SERVICES OF FIRE ALARM PROVIDER FOR MODIFICATION TO EXISTING FIRE ALARM SYSTEM. PROVIDE ALL HARDWARE FOR A COMPLETE INSTALLATION.

ISSUED FOR DATE

PROJECT TITLE
WEST MIDDLE SCHOOL - BID PACKAGE 2:
DISTRICT WIDE ACCESS CONTROL

OWNER
PORTAGE PUBLIC SCHOOLS

Portage, Michigan

SHEET TITLE
FIRST FLOOR PLAN - UNIT E

DATE
FEBRUARY 16, 2024

SHEET NUMBER
E 101E
23-214.70