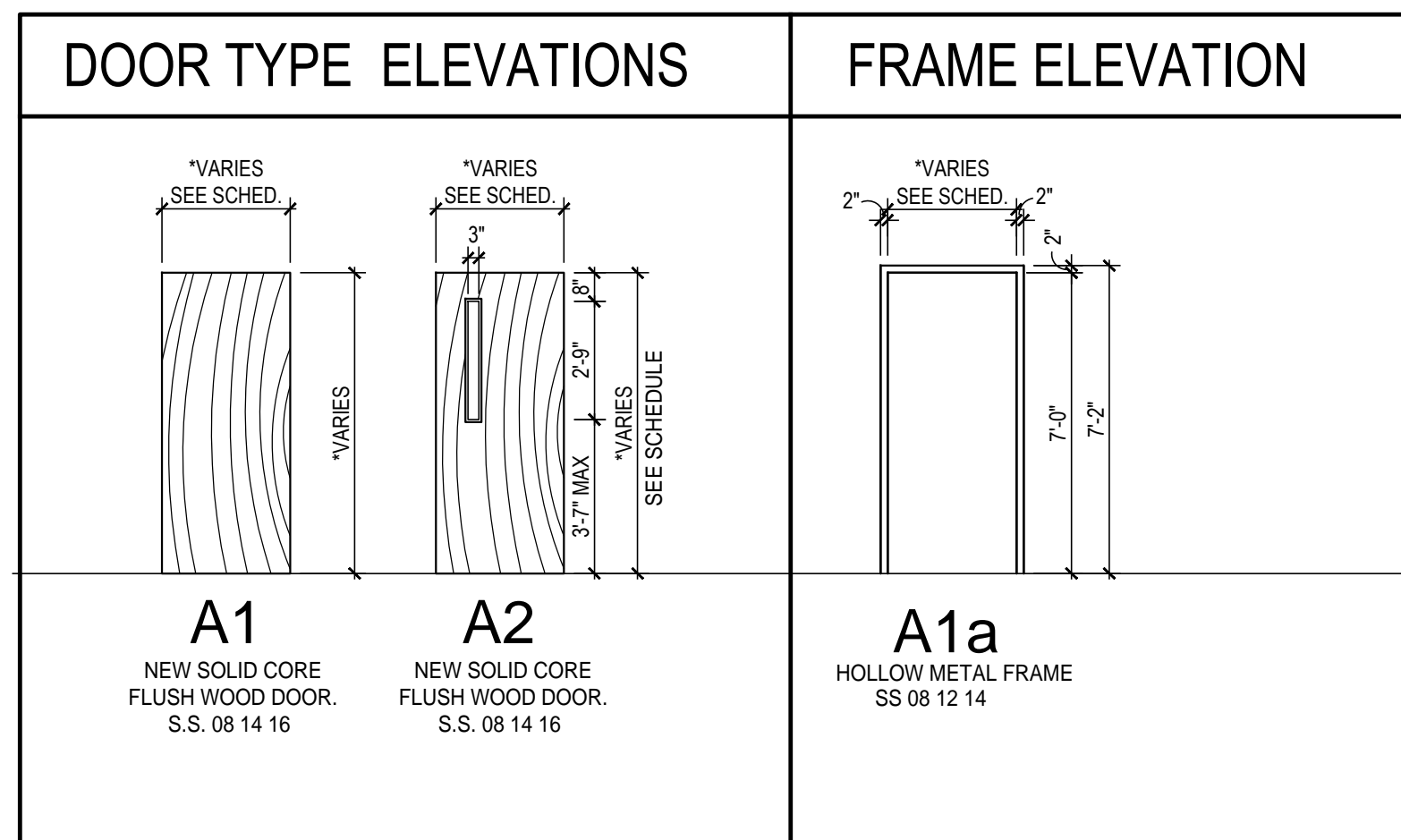


DOOR & FRAME SCHEDULE															
MATERIALS				FINISHES											
WD = WOOD		SS = STAINLESS STEEL		ST = STAIN		FRP = FIBER REINFORCED PANEL									
HM = HOLLOW METAL				PT = PAINT		2B = BRIGHT COLD-ROLLED									
AL = ALUMINUM				GA = GALVANIZED/PAINTED											
STL = STEEL				AN = ANODIZED											
Door				Frame				Details							
No.	Room Name	Size (w. x h. x t.)	Type	Matl.	Finish	Glazing	Type	Matl.	Finish	Jamb Depth	Rating	Jamb	Head	Hardware	Remarks
505a	RESTROOM	3'-0" x 7'-0" x 1-3/4"	A1	WD	ST		A1a	HM	PT	8 3/4"	-	1	2	07A	
505b	RESOURCE	3'-0" x 7'-0" x 1-3/4"	A2	WD	ST	1/4" TEMPERED	A1a	HM	PT	8 3/4"	-	1	2	02	



DOOR DETAIL TAG NOTES:

- NEW OR EXISTING CMU WALL.
- PROVIDE NEW LINTEL IN EXISTING OR NEW CMU WALL AS REQUIRED FOR NEW OPENING.
- 16 GA. HOLLOW METAL FRAME, PAINT. PROVIDE ANCHORS PER MFRS. RECOMMENDATION FOR INSTALLATION CONDITIONS. GROUT SOLID. CAULK PERIMETER, EACH FACE.
- FRAME JAMB BEYOND.
- GROUT FILLED AND REINFORCED CMU JAMB.

DOOR SPECIFICATIONS:

WOOD DOORS:

- MARSHFIELD DOOR SYSTEMS
- CORE TYPE: DPC, WITH SOLID STILES. BLOCKING AND REINFORCEMENTS FOR HARDWARE.
- FACE VENEER: ROTARY WHITE BIRCH WITH MATCHED GRAIN FOR TRANSPARENT FINISH.
- GLASS OPENINGS: W-6 FLUSH, 1/2" TEMPERED GLASS.
- FINISH: AT FACTORY, TRANSPARENT TR-4, CONVERSION VARNISH, CUSTOM QUALITY, SATIN SHEEN.
- ASI QUALITY STANDARDS: 1300 AND 1500.

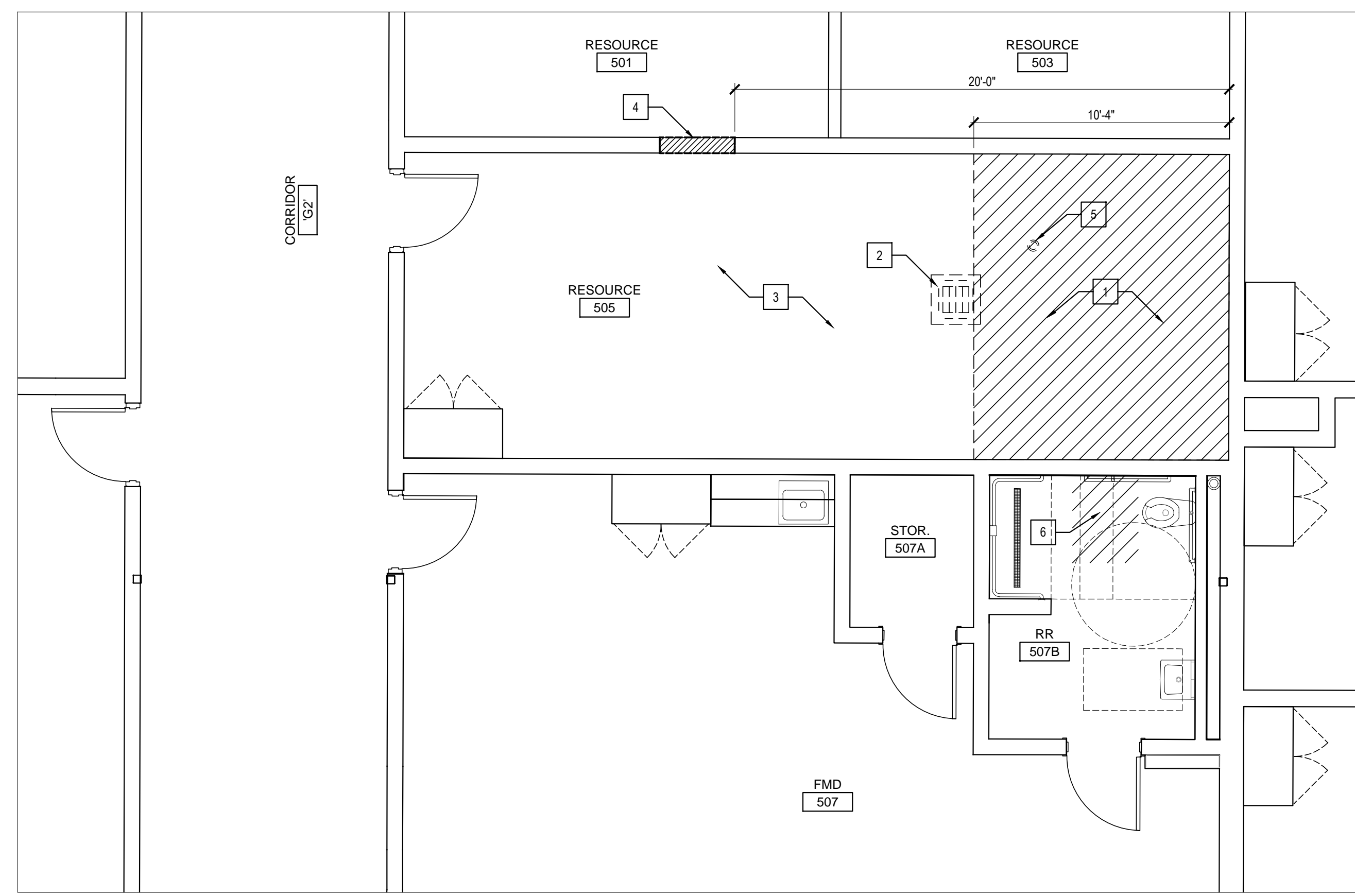
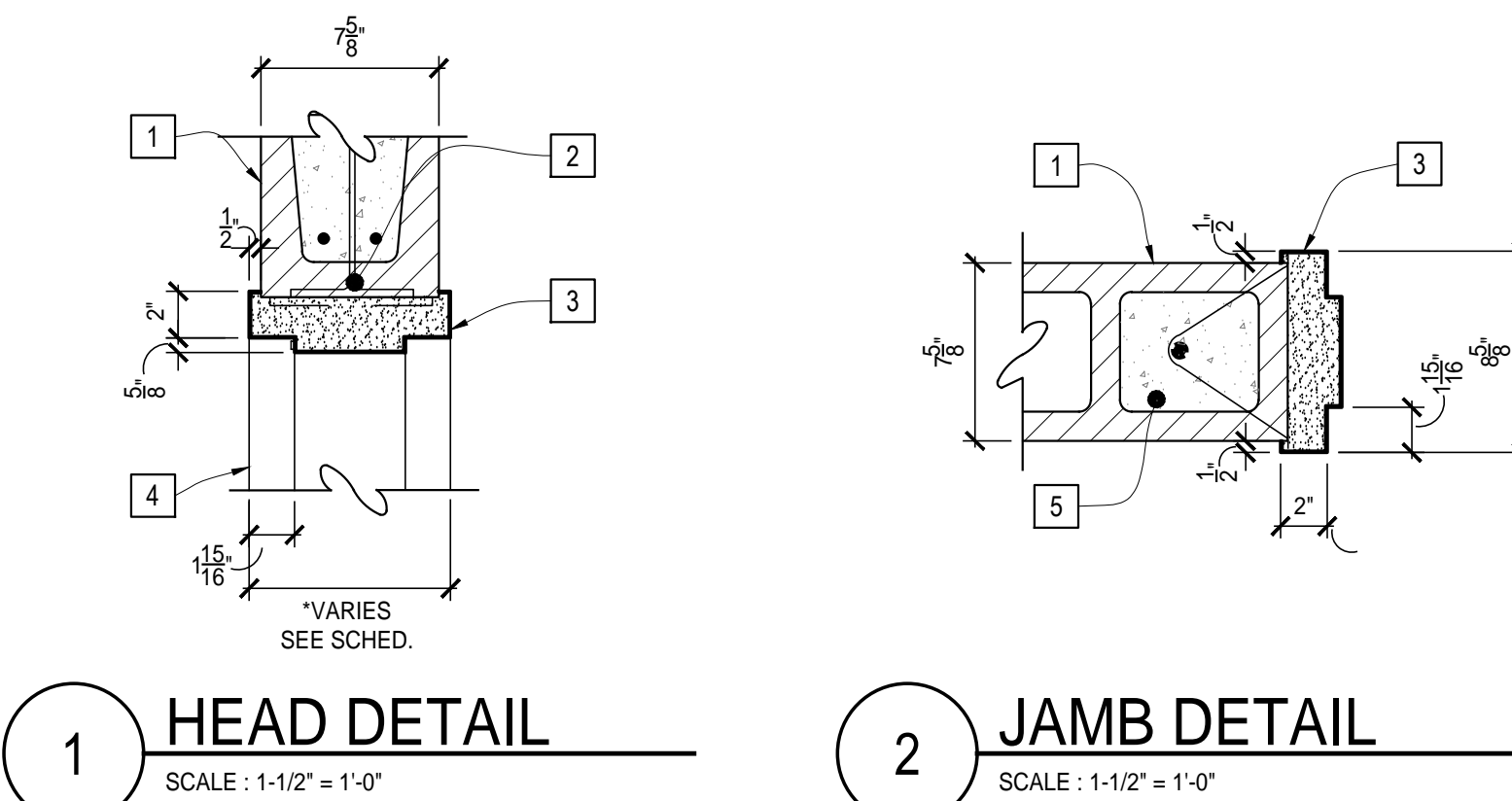
STEEL FRAMES:

- CURRIES / ASSA ABLOY
- MATERIAL: 16 GA., GALVANIZED.
- PROFILE: M. EQUAL RABBETS
- CONSTRUCTION: WELDED UNITS ONLY.

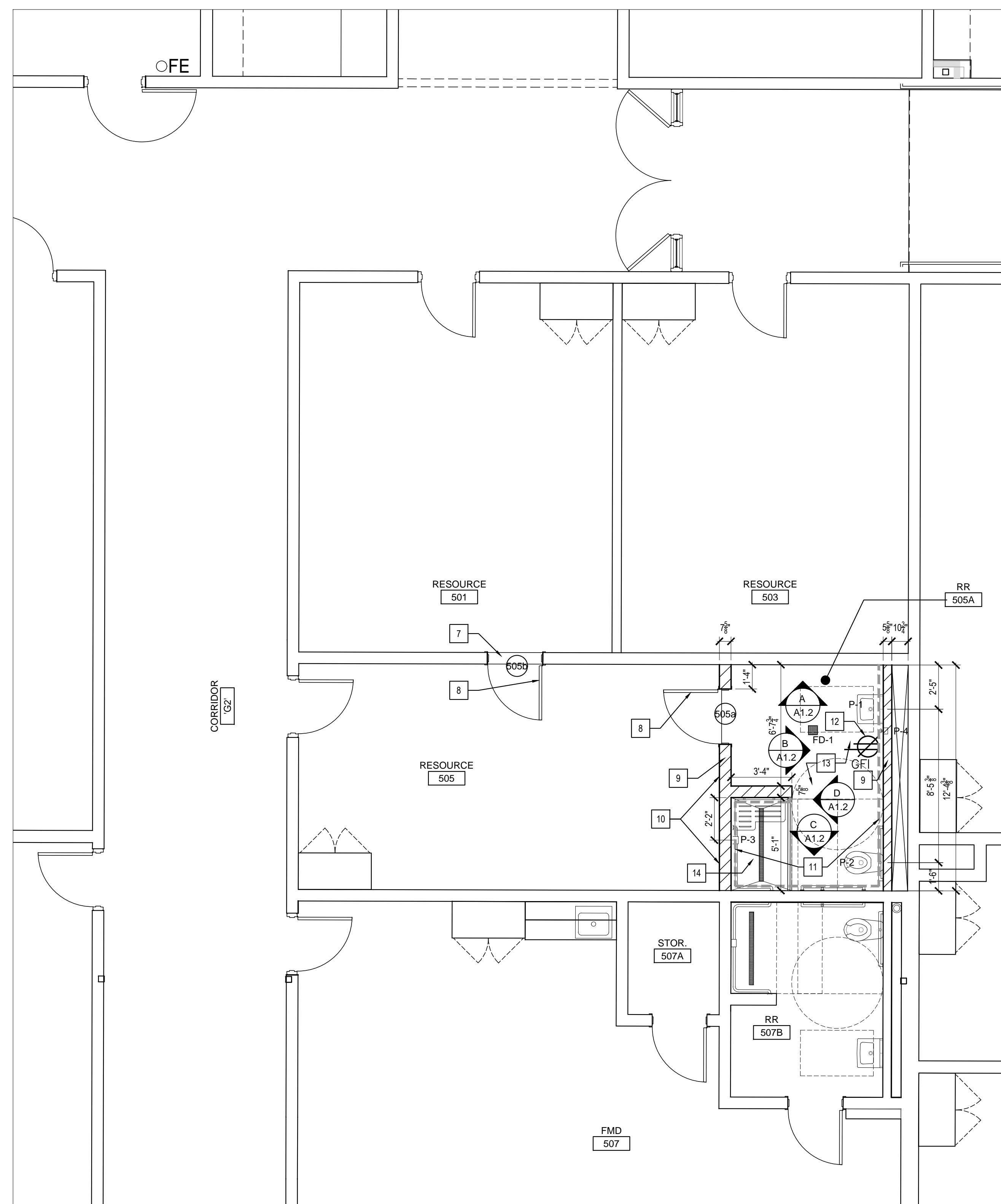
DOOR HARDWARE:

QTY/ITEM	MODEL	FINISH	MFR.
SET #02:			
3 HINGE	BB1279 4 1/2" X 4 1/2"	US26D	HAGER
1 LOCKSET	PBR 8808-2FL LC	626	YALE
2 MORTISE CYLINDER	E-74 STD	626	YALE
1 PROTECTION PLATE	194S 12" X 34" CSK	US32D	HAGER
1 PROTECTION PLATE	194S 12" X 35" CSK	US32D	HAGER
1 WALL BUMPER	1270CX (NON-LATEX)	626	TRIMCO
3 DOOR SILENCER	307D	GREY	HAGER
SET #07A:			
3 HINGE	BB1279 4 1/2" X 4 1/2"	US26D	HAGER
3 SPRING HINGE	1250 4 1/2" X 4 1/2"	US26D	HAGER
1 PASSAGE SET	PBR 8801FL	626	YALE
1 PROTECTION PLATE	194S 12" X 34" CSK	US32D	HAGER
1 PROTECTION PLATE	194S 12" X 35" CSK	US32D	HAGER
1 OVERHEAD STOP	1022 A	US32D	ASH MFR.
3 DOOR SILENCER	307D	GREY	HAGER

NOTE: ADJUST SPRING HINGES TO PULL DOOR ALMOST CLOSED, BUT NOT TO LATCH.



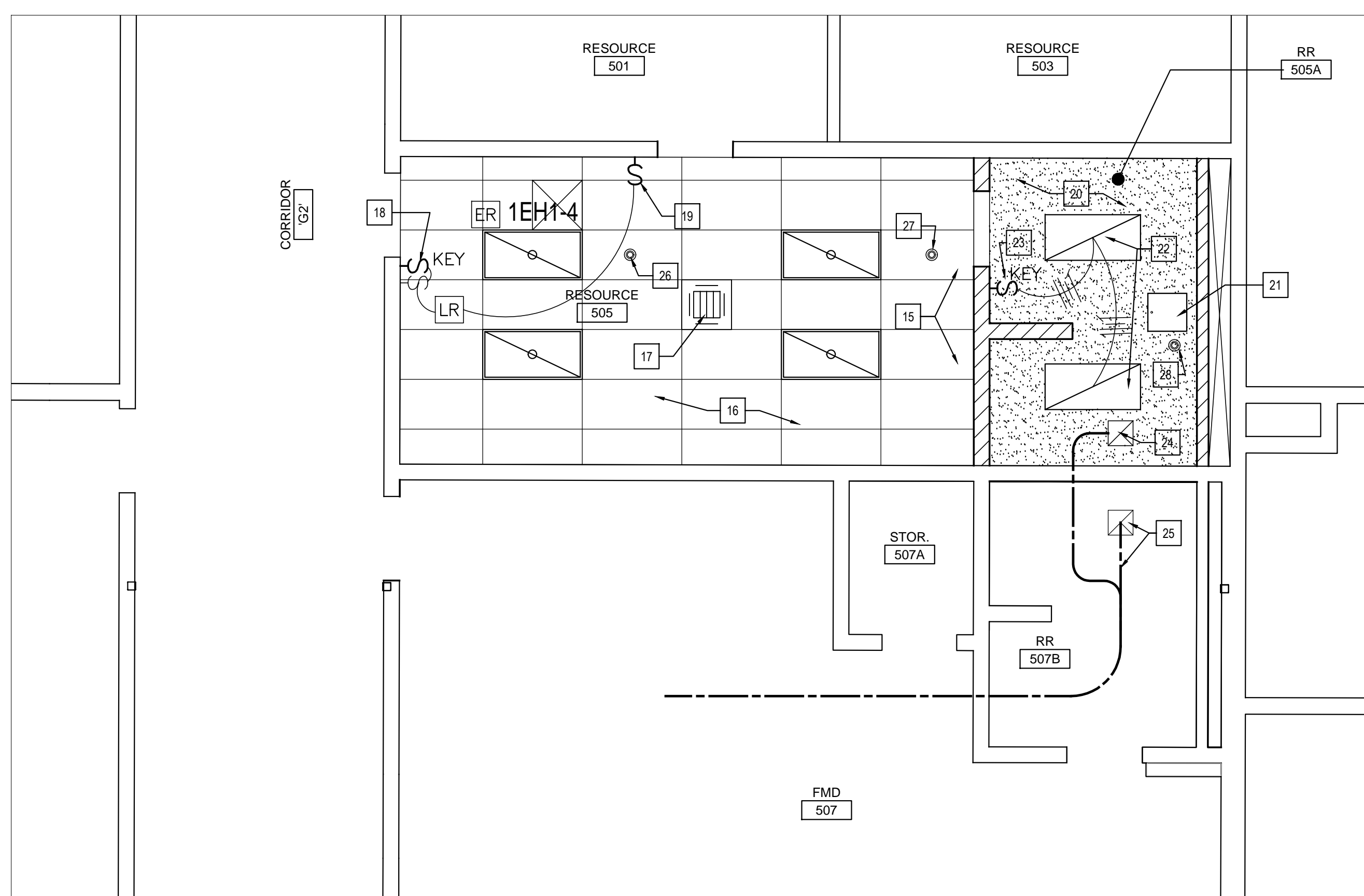
A DEMOLITION FLOOR PLAN
SCALE: 1/4" = 1'-0"



B RENOVATION FLOOR PLAN
SCALE: 1/4" = 1'-0"

- GENERAL NOTES:**
- BUILDER'S PLANS:** THE CONTRACTOR WARRANTS TO THE ARCHITECT THAT HE POSSESSES THE PARTICULAR COMPETENCE AND SKILL IN CONSTRUCTION NECESSARY TO BUILD THIS PROJECT WITHOUT FULL ARCHITECTURAL AND/OR ENGINEERING SERVICES. AT THE EXPRESS REQUEST OF THE OWNER, THE ARCHITECT HAS UNDERTAKEN A LIMITED SCOPE OF PROFESSIONAL SERVICES. THE CONSTRUCTION DOCUMENTS PROVIDED UNDER THE TERMS OF THIS AGREEMENT SHALL BE TERMED "BUILDER'S PLANS" IN RECOGNITION OF THE CONTRACTOR'S SOPHISTICATION. CONSTRUCTION MAY REQUIRE THE CONTRACTOR TO ADAPT THE "BUILDER'S PLANS" TO FIELD CONDITIONS AND MAKE LOGICAL ADJUSTMENTS TO FIT. FORM, DIMENSION, AND QUANTITY THAT ARE TREATED ONLY GENERALLY BY THE "BUILDER'S PLANS". IN THE EVENT ADDITIONAL DETAIL OR GUIDANCE IS NEEDED BY THE CONTRACTOR OR OWNER FOR CONSTRUCTION OF ANY ASPECT OF THE PROJECT, HE SHALL IMMEDIATELY NOTIFY THE ARCHITECT. FAILURE TO GIVE NOTICE SHALL RELIEVE THE ARCHITECT OF RESPONSIBILITY FOR THE CONSEQUENCES.
 - MECHANICAL, PLUMBING, FIRE SUPPRESSION AND ELECTRICAL SYSTEMS:** AT THE EXPRESS REQUEST OF THE OWNER THE MEP AND FIRE SUPPRESSION CONTRACTORS HAVE ACCEPTED RESPONSIBILITY FOR THE DESIGN AND CONSTRUCTION OF THEIR RESPECTIVE SYSTEMS. THE SYSTEMS SHALL COMPLY WITH ALL APPLICABLE CODES AND REGULATIONS INCLUDING, BUT NOT LIMITED TO:
 - Kentucky State Plumbing Law, Regulation & Code
 - Kentucky Building Code
 - Americans with Disability Act
 - Kentucky Division of Water Quality
 - Local Codes, Regulations & Ordinances
 - Kentucky Boiler Code
 - National Fire Protection Association
 - National Electric Code
 - "Standards of Safety" of the Commonwealth of Kentucky
 - American Society of Heating, Refrigeration & Air Conditioning Engineers (ASHRAE)
 - SMACNA
 - DO NOT SCALE DRAWINGS. DRAWINGS VARY IN SCALE AND IT IS THE RESPONSIBILITY OF THE CONTRACTOR TO CONFIRM.** WRITTEN DIMENSIONS ARE TO BE VERIFIED IN THE FIELD BY GENERAL CONTRACTOR PRIOR TO ANY WORK ON NEW PARTITIONS. DIMENSIONS ARE TO FINISHED FACE OF EXISTING AND TO FRAMING FOR NEW UNLESS NOTED. DOOR OPENINGS ARE NOMINAL FINISH DOOR WIDTHS. REFER TO MANUFACTURER FOR ACTUAL ROUGH OPENING DIMENSIONS.
 - IT IS THE CONTRACTOR'S RESPONSIBILITY TO PROVIDE ALL LINTELS NECESSARY TO COMPLETE THE CONSTRUCTION.
 - DURING RENOVATION, COVER AND PROTECT ANY EXISTING MATERIALS WHICH ARE TO REMAIN.
 - PROVIDE SOUND, DEBRIS AND DUST PROTECTION BETWEEN AREAS OF WORK AND ADJACENT OWNER OCCUPIED AREAS. EGRESS CORRIDORS MUST BE KEPT OPEN THROUGHOUT THE PROJECT FOR EMERGENCY ACCESS BY BUILDING OCCUPANTS.
 - WHERE EXISTING PARTITIONS ARE REMOVED, ADJOINING WALL AND FLOOR SURFACES ARE TO BE REPAIRED TO PROVIDE A CONTINUOUS SMOOTH FINISHED SURFACE. MASONRY IS TO BE TOOTHED INTO ADJACENT.
 - NEW CMU MASONRY WALLS ARE TO MATCH THE EXISTING ADJACENT CMU WALLS, INCLUDING COURSING (FIRST COURSE BEGINS AT 6" H. +/-, V.I.F.) AND BOND PATTERN (STACKED).
 - CONSTRUCTION SHALL COVER ALL WORK AS SHOWN ON THE DRAWING, AND IS TO INCLUDE ANY WORK REQUIRED TO MEET THE INTENTION OF THE WORK. CONTRACTOR HAS RESPONSIBILITY TO REFER TO ALL DRAWINGS, SITE INFORMATION, AND VERIFY ALL CONDITIONS IN FIELD BEFORE COMMENCING WORK. COMMENCING WORK MEANS ACCEPTANCE OF ALL CONDITIONS.
 - PATCH AND REPAIR TO "LIKE NEW" CONDITION ALL EXISTING CONCRETE CUT OR ROUTED FOR INSTALLATION OF NEW WORK INCLUDING MECHANICAL, ELECTRICAL AND PLUMBING SYSTEMS. PATCH AND REPAIR TO "LIKE NEW" CONDITION ALL EXISTING CONSTRUCTION AND / OR FINISHES DISTURBED BY DEMOLITION WORK. THIS REQUIREMENT APPLIES TO ANY / ALL LOCATIONS INCLUDING THOSE WHICH ARE NOT REPRESENTED ON THE FLOOR PLAN.

- SHEET A1.1 - PLAN TAG NOTES:**
- A/A1.1 - DEMOLITION FLOOR PLAN:**
- REMOVE AND DISPOSE OF EXISTING CONCRETE FLOOR SLAB IN ITS ENTIRETY IN AREA OF NEW RESTROOM 505A TO ALLOW FOR NEW PLUMBING AND MASONRY WORK.
 - EXISTING VRV CASSETTE IN EXISTING ACT GRID. DISCONNECT ALL PIPING AND ELECTRICAL, AND SALVAGE FOR REINSTALLATION IN NEW LOCATION IN ROOM.
 - EXISTING ACT GRID AND LIGHT FIXTURES TO REMAIN IN AREA NOT DISTURBED BY NEW RESTROOM 505A. IN AREA OF NEW RESTROOM 505A, REMOVE PORTION OF ACT GRID AND PANELS TO ALLOW FOR NEW WORK. SALVAGE PARTS AS NEEDED FOR PATCHING GRID IN ADJACENT RESOURCE 505.
 - PROVIDE NEW MASONRY OPENING IN EXISTING 8" CMU WALL FOR NEW DOOR/FRAME. PROVIDE NEW BOND BEAM TO SUPPORT NEW OPENING.
 - EXISTING FIRE SUPPRESSION SPRINKLER HEAD. REMOVE AND SALVAGE FOR REUSE IN NEW LOCATION. *by Landmark Sprinkler*
 - CUT OUT AND REMOVE PORTION OF EXISTING CONCRETE SLAB WITH TILE FINISH IN EXISTING RESTROOM 507B IN ORDER TO ACCESS EXISTING UNDERSLAB 4" SANITARY SEWER LINE.
- B/A1.1 - RENOVATION FLOOR PLAN:**
- PROVIDE NEW CONCRETE SLAB INFILL IN AREA OF NEW MASONRY OPENING, AND PROVIDE NEW VCT.
 - NEW WOOD DOOR AND HM STEEL FRAME, WITH HARDWARE, IN NEW MASONRY OPENING. SEE DOOR SCHEDULE, SHEET A1.1.
 - NEW 6" AND 8" NOM. CMU WALL ON NEW CONCRETE FOOTING. 9'-10" TOTAL HEIGHT. SEE NEW FOUNDATION DETAIL E/A1.2.
 - PATCH EXISTING VCT IN AREA DAMAGED BY NEW WORK. REMOVE EXISTING VCT BACK TO FULL JOINT AND RELAY NEW TO MATCH. PROVIDE NEW VINYL WALL BASE ON NEW WALL TO MATCH EXISTING. SEE FINISH SPECIFICATIONS, SHEET A1.2.
 - NEW 2X2 UNGLAZED PORCELAIN WALL TILE, FULL HEIGHT. SEE FINISH SPECIFICATIONS AND RESTROOM ELEVATIONS ON SHEET A1.2.
 - PROVIDE NEW DUPLEX OUTLET WITH INTEGRAL GROUND FAULT PROTECTION. 1'-4" AFF. *by FCPs*
 - NEW 4" CONCRETE FLOOR SLAB, RECESSED FOR FLUSH CONDITION AT DOOR 505a. SLOPE TO DRAIN.
 - NEW 4" CONCRETE SHOWER SLAB, RECESSED FOR FLUSH CONDITION AT DOOR 505b. SLOPE TO DRAIN.
- C/A1.1 - RENOVATION REFLECTED CEILING PLAN:**
- PATCH EXISTING ACT GRID IN AREA WHERE NEW MASONRY WALL INSTALLED, REUSING SALVAGED PARTS.
 - EXISTING ACT GRID SYSTEM AND LAY-IN LIGHT FIXTURES. DO NOT DISTURB EXCEPT AS NECESSARY TO PERFORM NEW WORK.
 - EXISTING VRV REINSTALLED IN NEW LOCATION. RECONNECT ALL PIPING AND WIRING TO EXISTING.
 - PROVIDE NEW KEYED WALL SWITCH IN LOCATION OF EXISTING. *by FCPs*
 - PROVIDE NEW 3-WAY WALL SWITCH IN THIS LOCATION FOR EXISTING LIGHT FIXTURES IN RESOURCE 505. *by FCPs*
 - NEW 1" WATER RESISTANT GYPSUM BOARD CEILING. SEE FINISH SCHEDULE ON SHEET A1.2. PAINT.
 - SUPPLY 1/2" TURN BALL VALVE SHUT-OFFS ON MAIN HOT AND COLD WATER SUPPLY LINES ABOVE CEILING. PROVIDE NEW 18"x18" STEEL ACCESS PANEL IN NEW GYP. BD. CEILING TO ACCESS SHUT-OFFS. FIELD VERIFY LOCATION.
 - REINSTALL EXISTING LIGHT FIXTURES, SALVAGED DURING DEMOLITION, IN NEW GYP. BD. CEILING. PROVIDE PERIMETER TRIM TO FIT APPLICATION.
 - PROVIDE NEW KEYED SWITCH FOR RESTROOM 505A LIGHT FIXTURES. *by FCPs*
 - PROVIDE NEW EXHAUST GRILLE AND DUCTWORK, CONNECTED TO EXISTING 8" DIA. EXHAUST DUCTWORK IN ADJACENT RESTROOM 507B.
 - EXISTING EXHAUST GRILLE AND 8" DIA. DUCTWORK ABOVE CEILING. CUT OUT EXISTING GYP. BD. CEILING TO ALLOW FOR ACCESS AND PATCH TO "LIKE NEW" CONDITION.
 - EXISTING FIRE SUPPRESSION SPRINKLER HEAD. DO NOT DISTURB.
 - REINSTALL SALVAGED FIRE SUPPRESSION SPRINKLER HEAD IN EXISTING ACT CEILING IN NEW LOCATION WITH PIPING CONNECTED TO MAIN. LOCATE AND INSTALL IN ACCORDANCE WITH NFPA-13. *by Landmark Sprinkler*
 - PROVIDE NEW FIRE SUPPRESSION SPRINKLER HEAD IN NEW GYP. BD. CEILING. LOCATE AND INSTALL IN ACCORDANCE WITH NFPA-13. *by Landmark Sprinkler*



C RENOVATION REFLECTED CEILING PLAN
SCALE: 1/4" = 1'-0"

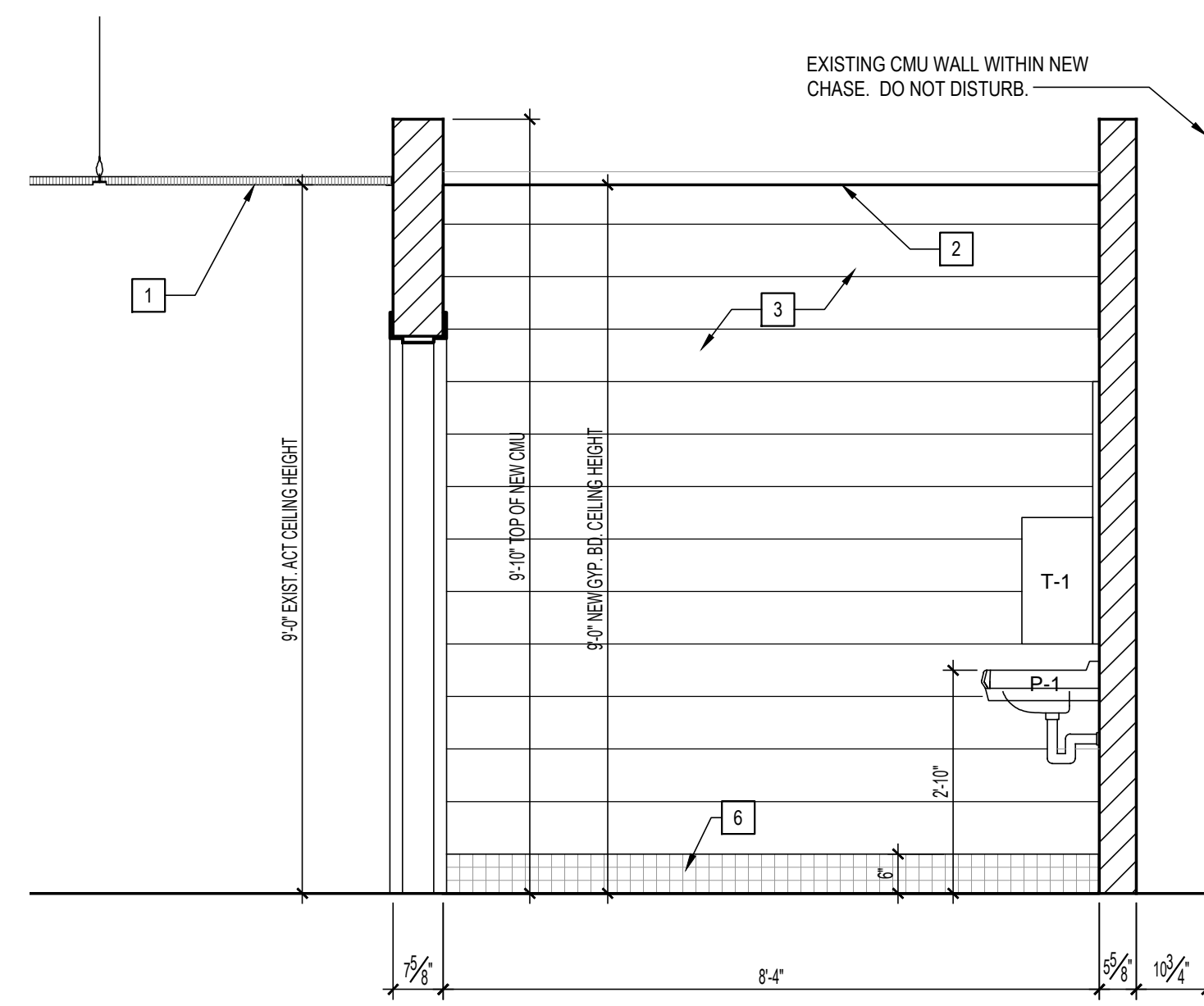
Tate Hill Jacobs Architects
346 East Main Street • Lexington • Kentucky • 40507
Telephone 859 • 252 • 5994 Facsimile 859 • 253 • 1607

BUILDER'S SET

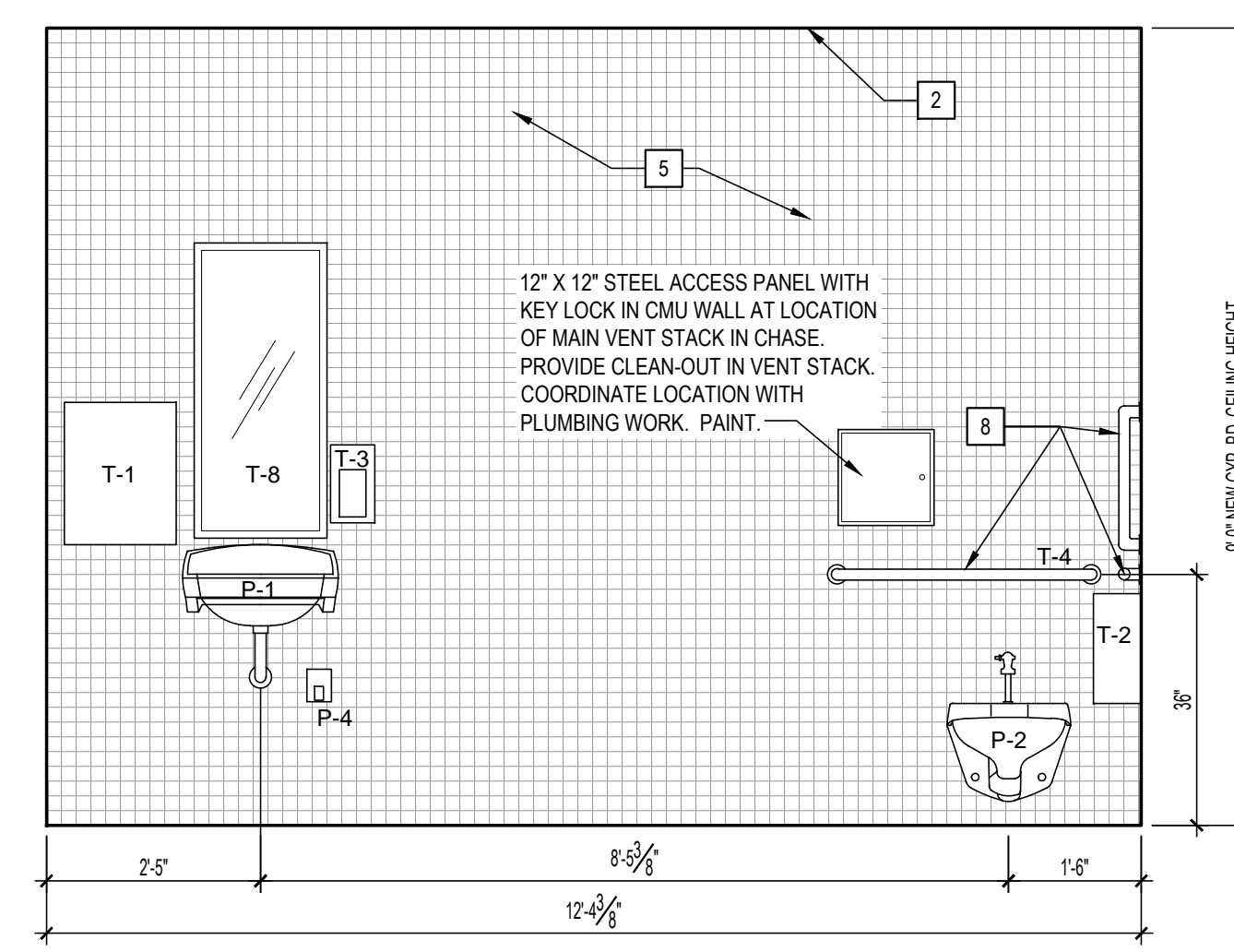
RENOVATION FLOOR PLAN
FAYETTE COUNTY PUBLIC SCHOOLS
JESSIE CLARK MIDDLE SCHOOL - RESTROOM ADDITION
3341 Clays Mill Road Lexington, KY 40503

Fig. #: 1005
Date: 02/26/2019
Drawn: MFI
Checked: SD
Revised:

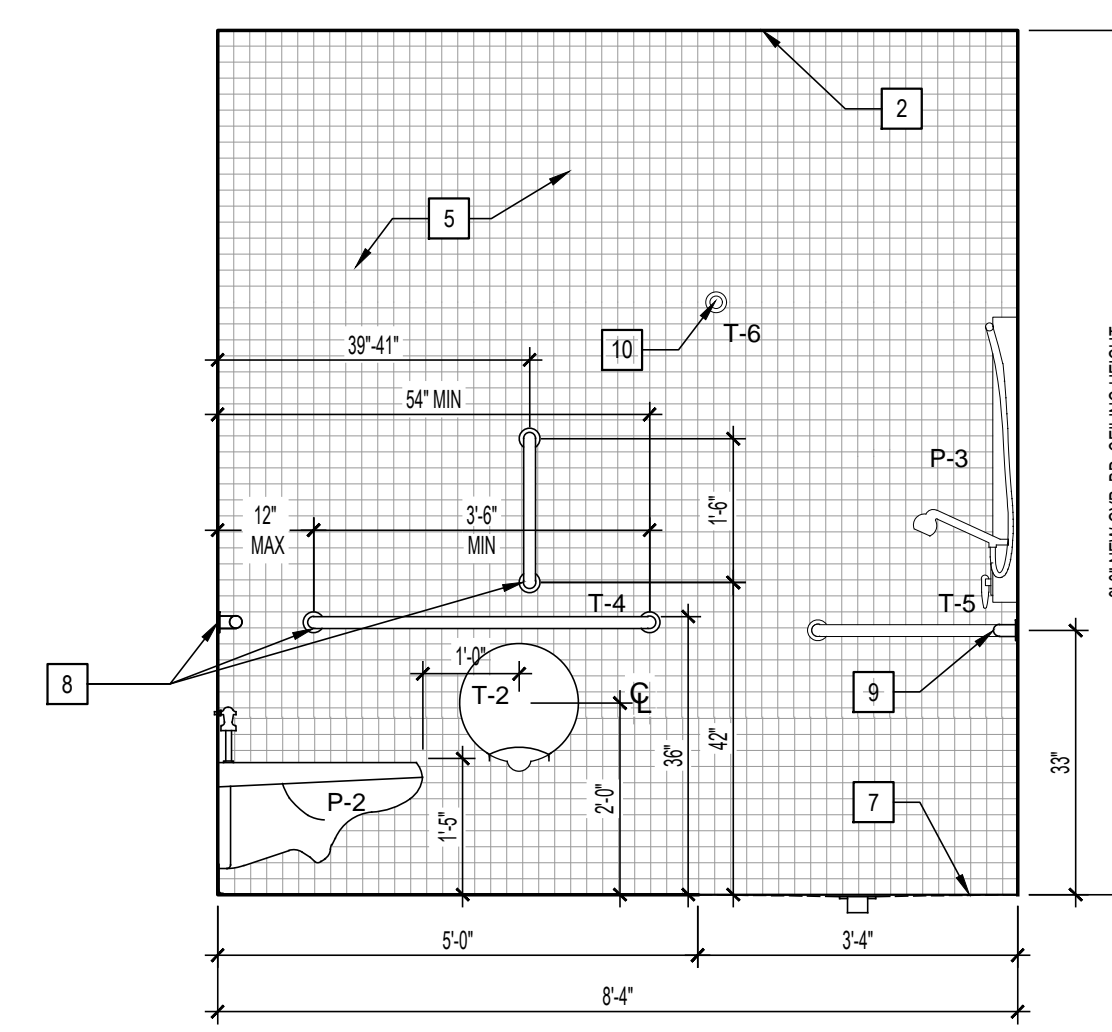
A1.1



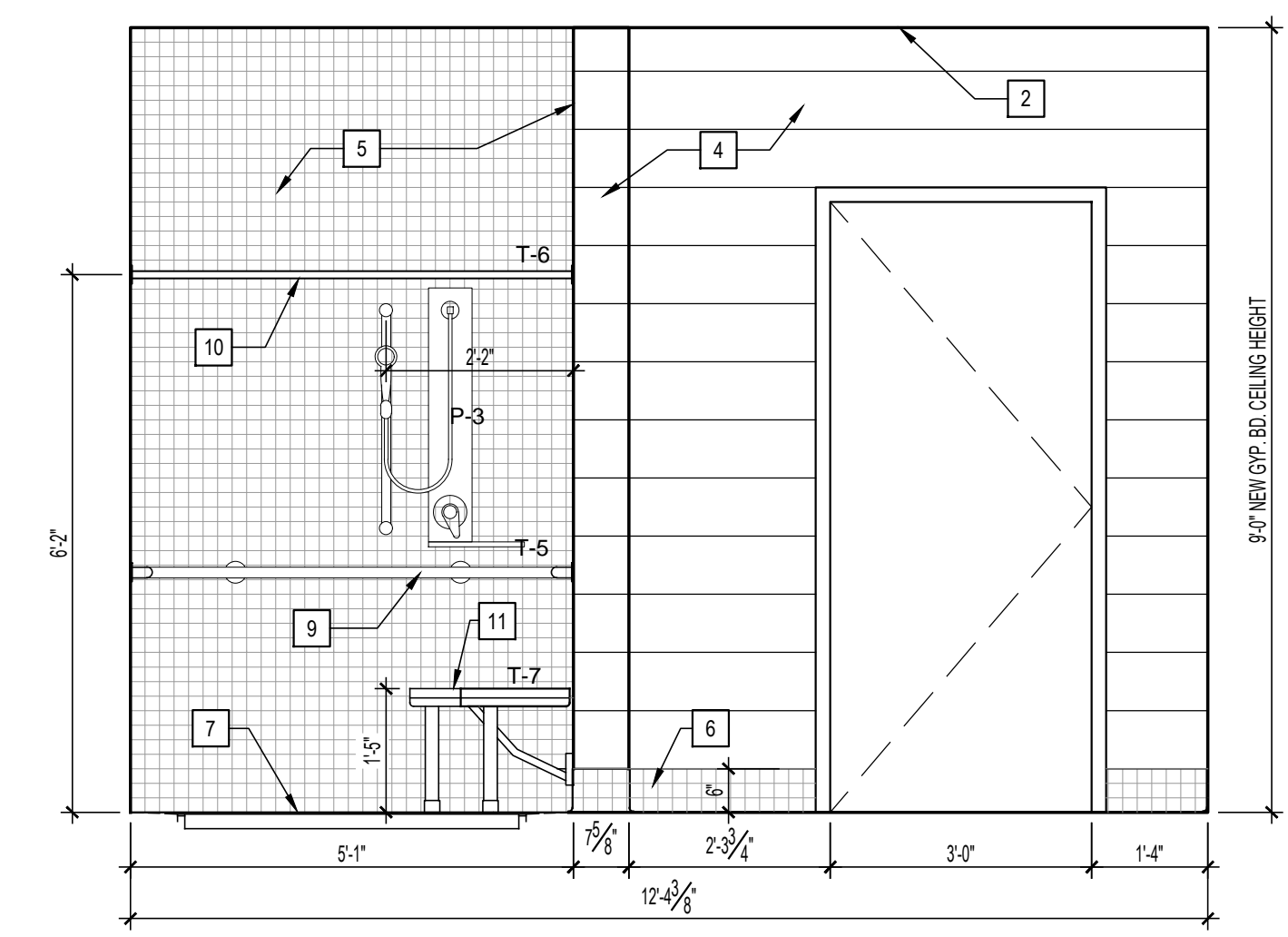
A RR ELEVATION
SCALE: 1/2" = 1'-0"



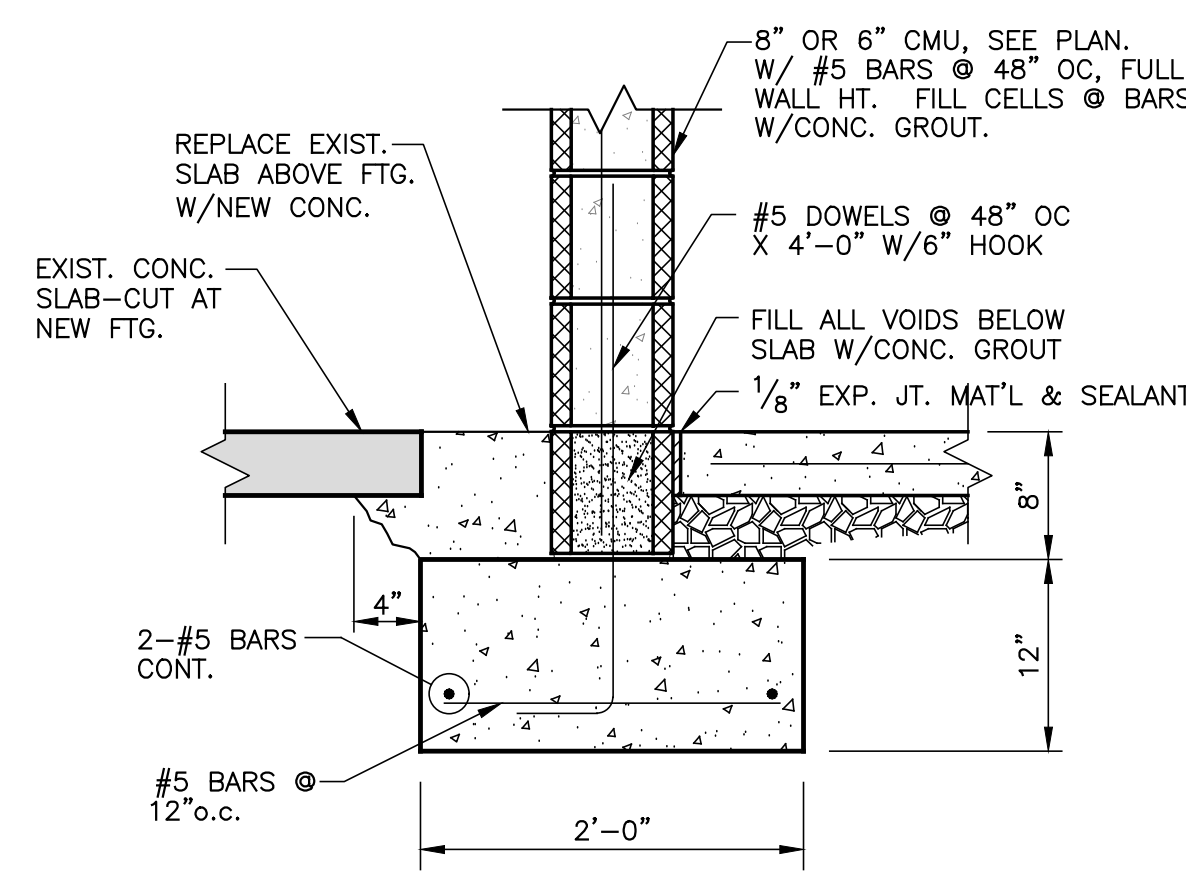
B RR ELEVATION
SCALE: 1/2" = 1'-0"



C RR ELEVATION
SCALE: 1/2" = 1'-0"



D RR ELEVATION
SCALE: 1/2" = 1'-0"



E CMU FOUNDATION DETAIL
SCALE: 1/2" = 1'-0"

ROOM FINISH SCHEDULE

No.	Room Name	Floor	Slab	Wall	Ceiling	Ch. Ht.	Remarks
505	RESTROOM					9'-0"	Notes 1, 2, 3, 4
505A	RESTROOM					9'-0"	Notes 5, 6, 10
507B	RESTROOM (EXIST.)					9'-0"	Notes 7, 8, 9

REMARKS:

- REMOVE EXISTING VCT IN AREA OF NEW RESTROOM. BACK TO A FULL TILE BEYOND NEW CMU WALL LOCATION. PATCH BACK WITH NEW VCT TO MATCH EXISTING AFTER NEW WALL INSTALLED. OWNER TO STRIP AND WAX ENTIRE ROOM AREA.
- PROVIDE NEW RESILIENT BASE ON NEW CMU WALL TO MATCH EXISTING ADJACENT.
- REMOVE EXISTING ACT CEILING GRID AND PANELS IN AREA OF NEW RESTROOM. AND SALVAGE FOR REUSE. PATCH BACK WITH EXISTING SALVAGED MATERIAL AFTER NEW WALL INSTALLED.
- TOUCH UP PAINT ON EXISTING CMU WALLS WHERE NEW WORK DISTURBS.
- COORDINATE REQUIRED CONCRETE SLAB SLOPE TO DRAIN AND/OR DEPRESSION FOR TILE INSTALLATION PRIOR TO POURING FLOOR SLAB.
- WATER RESISTANT GYP BD. AND COATINGS IN ALL WET AREAS.
- REPAIR/PATCH EXISTING PORCELAIN TILE TO "LIKE-NEW" IN AREA OF EXISTING RESTROOM WHERE SLAB CUT TO ACCESS PLUMBING. PROVIDE NEW TILE TO MATCH EXISTING.
- CLEAN AND PATCH EXISTING PORCELAIN WALL AND BASE TILE WHERE EXISTING FLOOR CUT TO ACCESS PLUMBING. PROVIDE NEW TILE TO MATCH EXISTING.
- CUT AND PATCH EXISTING WR GYP. BD. CEILING IN EXISTING RESTROOM TO ACCESS ABOVE CEILING EXHAUST DUCTWORK. REPAINT ENTIRE CEILING AFTER PATCHING.
- NEW 6" & 8" NOM. CMU WALLS, STACKED BOND, TO MATCH EXISTING. NON-LOAD BEARING. FIRST COURSE = 6" HIGH. EXTEND TO 9'-10" HEIGHT.

ROOM FINISH SPECIFICATIONS:

- CONCRETE SLAB:**
- 4" CONCRETE SLAB, WITH 6X6 8/8 W.W.F., OVER 15 MIL POLYETHYLENE VAPOR BARRIER OVER 6" CRUSHED STONE.
 - 4000 PSI COMPRESSION STRENGTH, IN 28 DAYS.
 - SLOPE TO DRAIN.
- CONCRETE MASONRY UNITS:**
- MANUFACTURER: BOYLE BLOCK, READY MIX CONCRETE, OR MEADE CONCRETE PRODUCTS.
 - HOLLOW NON-LOAD BEARING, ASTM C90, TYPE II - NON-MOISTURE CONTROLLED, LIGHT WEIGHT.
 - GROUT SOLID AT ALL ANCHORAGE LOCATIONS, PARTICULARLY THE FOLD-DOWN SHOWER SEAT LOCATION.
 - UNIT SIZE AND SHAPE: STANDARD NOMINAL MODULAR SIZE: 6"x8"x16" AND 8"x8"x16" AS NOTED ON THE PLANS. FURNISH SPECIAL UNITS FOR BOND BEAMS AND LINTELS. BASE SHAPES TO BE STRAIGHT. ALL OUTSIDE CORNERS TO BE BULLNOSE. ALL INSIDE CORNERS TO BE 90 DEGREES.
 - REINFORCEMENT: INSTALL HORIZONTAL JOINT REINFORCEMENT 8" OC FOR STACK BOND. LAP JOINT REINFORCEMENT ENDS MINIMUM OF 6". REINFORCE STACK BONDED JOINT CORNERS AND INTERSECTIONS WITH STRAP ANCHORS 16" OC.
 - MORTAR: ASTM C270, TYPE N.
 - GROUT: 3,000 PSI STRENGTH AT 28 DAYS. ASTM C476 FINE GROUT.
- GYPSUM BOARD:**
- MANUFACTURER: USG CO., NATIONAL GYPSUM CO., CELOTEX BUILDING PRODUCTS, G-P GYPSUM CORP.
 - FRAMING MATERIALS: ASTM C645, GA-216 AND GA-600; GALVANIZED STEEL, 26 GAUGE FOR ABOVE CEILING APPLICATIONS, 24" OC MAXIMUM SPACING.
 - SHEET MATERIAL: 1/2" WET RATED GYPSUM BOARD.
 - JOINT MATERIAL: ASTM C475 AND GA-216.
 - FINISH LEVEL: LEVEL 4 - CEILING EXPOSED TO VIEW.
- VINYL COMPOSITION TILE (VCT) - EXISTING:**
- MANUFACTURER: ARMSTRONG
 - MATERIAL: STANDARD EXCELO, IMPERIAL TEXTURE, 12X12X1/8"
 - COLOR: 51878 - GOLDEN.
- TILE:**
- MANUFACTURER: DAL-TILE (TO MATCH EXISTING)
 - MATERIAL: KEYSTONES, UNGLAZED PORCELAIN, 2X2X1/4"
 - JOINT: 1/8" WIDTH
 - SPECIAL TRIM SHAPES:
 - INTERNAL BASE CORNER (WALL TO FLOOR) = C-833, COVE.
 - BASE EXTERNAL CORNERS = SC-813, COVE.
 - BASE INTERNAL CORNERS = C8-813, COVE.
 - EXPOSED EDGE = S-886, BULLNOSE EDGE.
 - COLOR: PEPPER WHITE, D037 (VERIFY IN FIELD)
 - MORTAR: EPOXY ANSI A118.3
 - GROUT: EPOXY ANSI A118.3, MODIFIED EPOXY EMULSION GROUT.
 - FLOOR THRESHOLD: MARBLE-TYPE, STANDARD COLOR SIMILAR TO TILE COLOR, HONED FINISH 4" X 3" X FULL FRAME WIDTH SIZE.
- PAINT:**
- MANUFACTURER: SHERWIN WILLIAMS (TO MATCH EXISTING)
 - CONCRETE MASONRY UNITS - SEMI-GLOSS FINISH
 - PREP-RITE BLOCK FILLER B25W25 - ONE COAT
 - PRO-MAR 200 0VOC LATEX SEMI-GLOSS B31W2651 - TWO COATS
 - CONCRETE MASONRY UNITS - EPOXY FINISH
 - PREP-RITE BLOCK FILLER B25W25 - ONE COAT
 - KEM CATI-COAT HS EPOXY FILLER B42W460 - ONE COAT
 - PRE-CATALYZED WATER-BASED EPOXY SEMI-GLOSS K66W151 - TWO COATS
 - GYPSUM BOARD
 - PRO-MAR 200 0VOC LATEX PRIMER B28W2600 - ONE COAT
 - PRO-MAR 200 0VOC LATEX EGGSHELL B26W2651 - TWO COATS
 - COLOR: MATCH EXISTING.

RESTROOM TAG NOTES:

- EXISTING ACT CEILING SYSTEM. PATCH WHERE NEW CMU WALL INSTALLED USING SALVAGED PARTS FROM ORIGINAL INSTALLATION.
- NEW SUSP. 1/2" GYP. BD. CEILING. PAINT.
- EXISTING CMU WALL. REPAINT.
- NEW REINFORCED CMU WALL ON NEW CAST IN PLACE CONCRETE FOUNDATION. SEE DETAIL E/A1.2. FILL AND PAINT.
- NEW 2X2 PORCELAIN WALL TILE. EPOXY GROUT/MORTAR.
- NEW 2X2 PORCELAIN WALL BASE TILE. EPOXY GROUT/MORTAR. 6" HIGH.
- SLOPE NEW CONCRETE SLAB FOR FLUSH TILED SHOWER BASE TO NEW DRAIN.
- NEW WATER CLOSET STAINLESS STEEL GRAB BARS. GROUT CMU CAVITIES FULL AT ANCHORAGE LOCATIONS. COORDINATE WITH MASON.
- NEW SHOWER STAINLESS STEEL GRAB BARS. GROUT CMU CAVITIES FULL AT ANCHORAGE LOCATIONS. COORDINATE WITH MASON.
- NEW SHOWER CURTAIN AND ROD.
- NEW BARIATRIC FOLD-DOWN SHOWER SEAT WITH LEGS. GROUT CMU CAVITIES FULL AT ANCHORAGE LOCATIONS. COORDINATE WITH MASON.

PLUMBING FIXTURE SCHEDULE:

- P-1 LAVATORY - WALL HUNG W/SINGLE LEVER FAUCET - ADA COMPLIANT:**
AMERICAN STANDARD VITREOUS CHINA, 20"x18" WALL HUNG LAVATORY WITH 4" FAUCET CENTERS, CONCEALED ARMS AND 4" HIGH BACKSPASH. PROVIDE A 0.5 GPM SINGLE LEVER FAUCET, CHROME PLATED 1/2" SUPPLIES WITH STOPS, GRID DRAIN, A KENTUCKY CODE P-TRAP (WITH-BREAK-AWAY-TRAP-ARM-AT-WALL) TAILPIECE AND ESCUTCHEONS. MOUNT LAVATORY AT A HEIGHT LEAVING A CLEARANCE OF AT LEAST 28" FROM THE FLOOR TO THE APRON AND THE RIM AT A MAXIMUM OF 34" AFF. PROVIDE ALL CARRIER. PROVIDE ON THE EXPOSED WASTE PIPE AND WATER SUPPLY LINES A TRAP-WRAP INSULATION KIT WITH A VINYL AND PLASTIC COVERING. ACCEPTABLE FAUCET MANUFACTURERS ARE ZURN AND MOEN.
- P-2 WATER CLOSET - WALL HUNG - MANUAL FLUSH VALVE - ADA COMPLIANT:**
VITREOUS CHINA, WALL HUNG ELONGATED BOWL, SIPHON JET, 1 1/2" TOP SPUD INLET, CHINA BOLT CAPS AND WHITE OPEN FRONT PLASTIC SEAT WITH SELF-SUSTAINING CHECK HINGES. PROVIDE MANUAL 1 1/2" GPF FLUSH VALVE WITH HANDLE AT A MAXIMUM OF 31" AFF. PROVIDE WALL CARRIER. MOUNTED WITH RIM OF BOWL AT 17" AFF. PROVIDE NEOPRENE GASKETS. ACCEPTABLE WATER CLOSET MANUFACTURERS ARE CRANE, KOHLER AND AMERICAN STANDARD. FLUSH VALVES ARE ZURN OR SLOAN.
- P-3 SHOWER - ADA COMPLIANT:**
SYMMONS HYDRAPIPE MODEL MODEL 1-901S-FSB WITH PRESSURE BALANCING MIXING VALVE INTEGRAL SERVICE STOPS AND ADJUSTABLE STOP SCREW TO LIMIT HANDLE TURN. WALL/HAND SHOWER WITH FLEXIBLE 5' METAL HOSE WITH IN-LINE VACUUM BREAKER, WALL CONNECTION AND FLANGE. 30" SLIDE BAR FOR HAND SHOWER MOUNTING. STAINLESS STEEL COVERING TO BE 18 GAUGE FINISH WITH BRUSH FINISH OR EQUAL. SHOWER DRAIN TO BE SCHLUTER 8.7 KERDI-LINE DRAIN SYSTEM.
- P-4 WALL HYDRANT (WASH-DOWN FAUCET):**
ZURN OR EQUAL, INTERIOR WALL HYDRANT, EXTERNAL VACUUM BREAKER, ALL BRONZE INTERIOR COMPONENTS, VANDAL-RESISTANT OPERATING STEM, 1/2" MALE HOSE CONNECTION. FURNISH WITH LOOSE KEY HANDLE.
- FD-1 FLOOR DRAIN:**
ZURN OR EQUAL, FLOOR DRAIN WITH 6"x6" TOP, TYPE 'S' NICKEL BRONZE STRAINER, 3" DRAIN OUTLET. PROVIDE COLD WATER TRAP PRIMER BY PRECISIONS AS REQUIRED BY APPLICATION.

TOILET ACCESSORIES SCHEDULE:

- T-1 PAPER TOWEL DISPENSER (PROVIDED BY OWNER, INSTALLED BY CONTRACTOR):**
GEORGIA PACIFIC "emMotion", MODEL 59462.
- T-2 TOILET PAPER DISPENSER (PROVIDED BY OWNER, INSTALLED BY CONTRACTOR):**
GEORGIA PACIFIC, MODEL 56781.
- T-3 SOAP DISPENSER (PROVIDED BY OWNER, INSTALLED BY CONTRACTOR):**
TRIPLE S 'DUO CLEAN'
- T-4 GRAB BARS (WATER CLOSET):**
STAINLESS STEEL, 1-1/2" OUTSIDE DIAMETER, HEAVY DUTY 18 GAUGE 304 STAINLESS STEEL TUBING, STANDARD GRASPING SURFACE FINISH, CONCEALED FLANGE MOUNTING. MEETS OR EXCEEDS FHS, VA, ANSI AND UFA STANDARDS. MINIMUM 1-1/2" CLEARANCE BETWEEN WALL AND INSIDE OF GRAB BAR.
• LENGTH AND CONFIGURATION: AS INDICATED ON DRAWINGS.
• MANUFACTURERS: BRADLEY, ASI, BOBRICK.
- T-5 GRAB BARS (SHOWER):**
STAINLESS STEEL, 1-1/2" OUTSIDE DIAMETER, HEAVY DUTY 18 GAUGE 304 STAINLESS STEEL TUBING, STANDARD GRASPING SURFACE FINISH, CONCEALED FLANGE MOUNTING. MEETS OR EXCEEDS FHS, VA, ANSI AND UFA STANDARDS. MINIMUM 1-1/2" CLEARANCE BETWEEN WALL AND INSIDE OF GRAB BAR.
• LENGTH AND CONFIGURATION: AS INDICATED ON DRAWINGS.
• MANUFACTURERS: BRADLEY, ASI, BOBRICK.
- T-6 SHOWER CURTAIN AND HOOKS:**
MICROBAN ANTI-BACTERIAL SHOWER CURTAIN, 10 OZ. NYLON-REINFORCED 8 GAUGE VINYL MATERIAL. FLAME RESISTANT AND SELF DEODORIZING WITH RUST-PROOF GROMMETS ON 6" CENTERS. ALL SIDES HELMED. STAINLESS STEEL SPRING CURTAIN HOOKS. PROVIDE STAINLESS STEEL SHOWER ROD FOR CURTAIN AND HOOKS.
• SHOWER CURTAIN - MODEL 9537, WHITE, 72" X 72" MANUFACTURED BY BRADLEY.
• CURTAIN ROD HOOKS - MODEL 9536, QUANTITY AS REQUIRED BY CURTAIN, MANUFACTURED BY BRADLEY.
- T-7 FOLD-UP SHOWER SEAT:**
BARIATRIC SHOWER SEAT, WALL MOUNTED, FOLD-DOWN WITH LEGS, NON-POROUS HIGH PRESSURE LAMINATE SEAT. TO SUPPORT A MINIMUM OF 1,102 LBS.
• SEAT - BOBRICK MODEL B-918116, RIGHT HAND.
- T-8 MIRROR:**
FIXED, STAINLESS STEEL FRAME, 1/2" TEMPERED GLASS MIRROR.
• SIZE: 18" X 36"
• BACKING: 20 GAUGE GALVANIZED STEEL SECURED TO FRAME WITH CONCEALED SCREWS, EQUIPPED WITH INTEGRAL HORIZONTAL HANGING BRACKETS AND SEPARATE WALL HANGER FOR CONCEALED MOUNTING.
• GLASS TO MEET REQUIREMENTS OF ASTM C 1036.
• MANUFACTURER: BOBRICK.