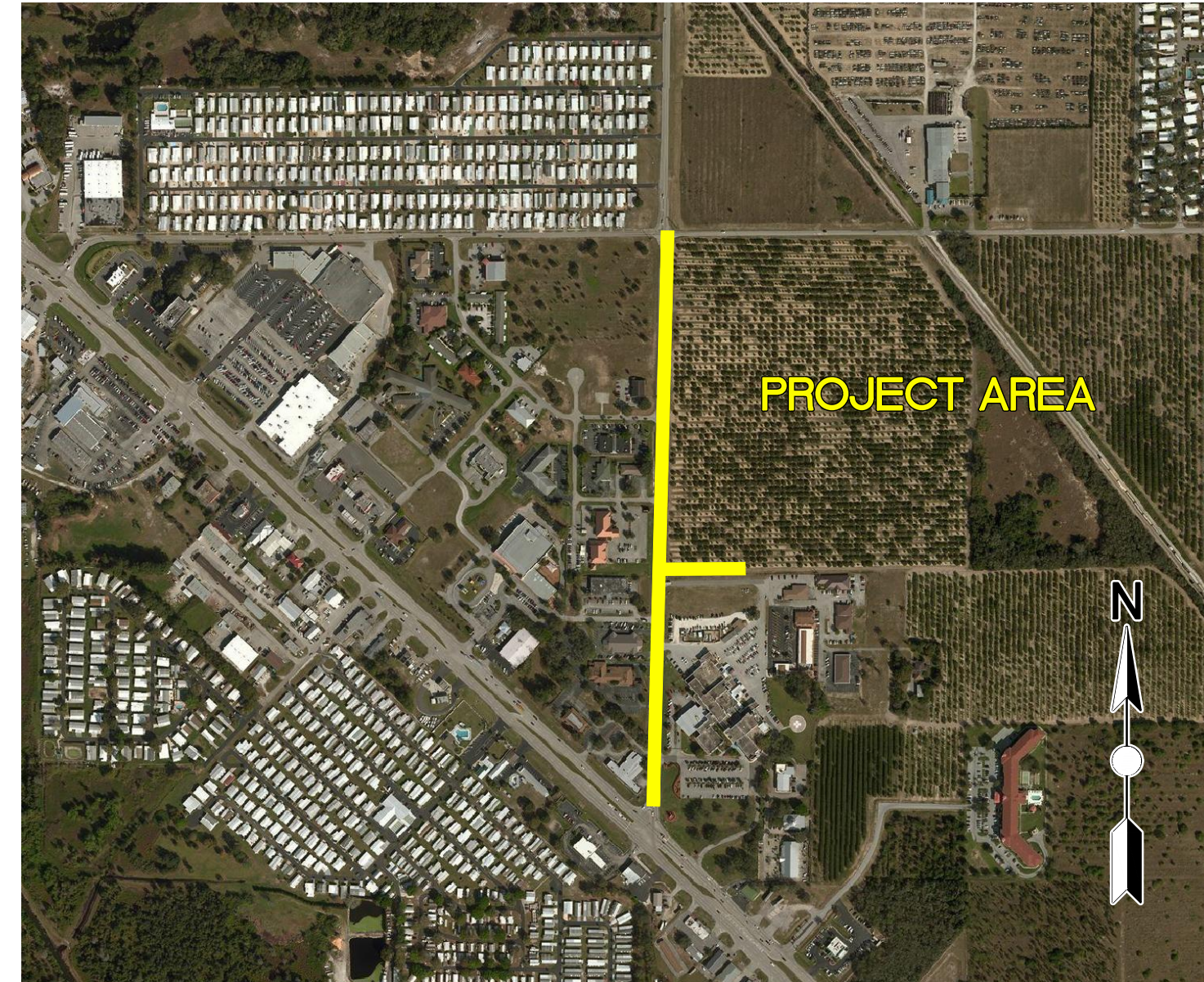


- SHEET DESCRIPTION**
- 1 COVER SHEET
 - 2 GENERAL NOTES AND LEGEND
 - 3-6 SEBRING PARKWAY PLAN & PROFILE

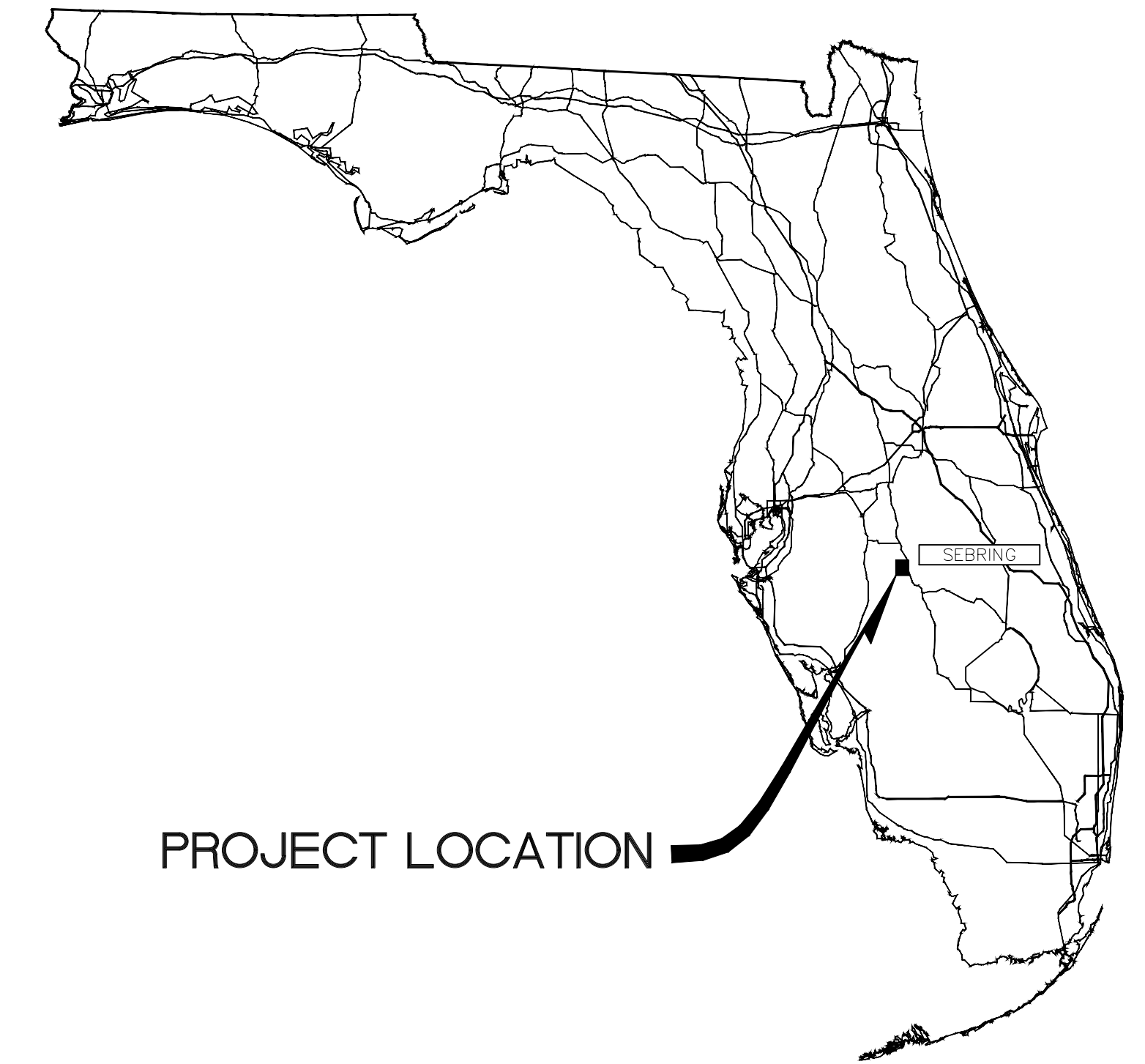
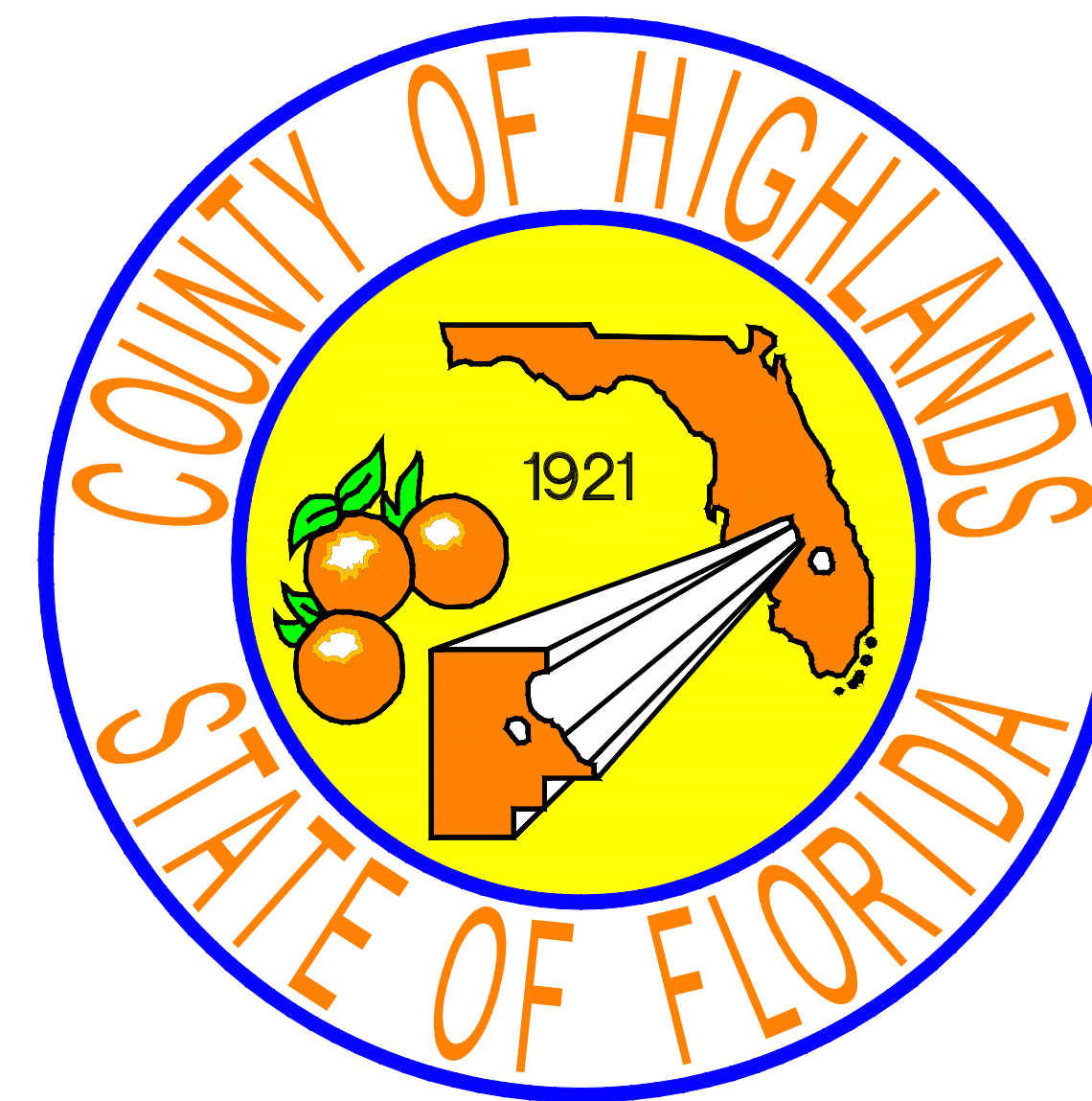
HIGHLANDS COUNTY BOARD OF COUNTY COMMISSIONERS ON BEHALF OF THE CITY OF SEBRING UTILITY MODIFICATIONS (GRAVITY SEWER RELOCATION) CONSTRUCTION PLANS FOR SEBRING PARKWAY

TABULATION OF QUANTITIES

SEBRING PARKWAY PHASE II-B IMPROVEMENTS HIGHLANDS COUNTY PROJECT NO. 17063 BASE BID			
TASK NO.	ITEM DESCRIPTION	QUANTITY	UNIT
1	MOBILIZATION	1	LS
2	BONDS & INSURANCE	1	LS
3	TESTING	1	LS
4	CONSTRUCTION SURVEY STAKING INCLUDING AS-BUILT	1	LS
5	MAINTENANCE OF TRAFFIC	1	LS
6	REMOVAL & DISPOSAL OF EXISTING UTILITIES	1	LS
7	4" SDR 35 PVC 1120 LATERAL ASSEMBLY	567	LF
8	6" SDR 35 PVC 1120 LATERAL ASSEMBLY	341	LF
9	8" SDR 35 PVC 1120 LATERAL ASSEMBLY	296	LF
10	10" SDR 35 PVC 1120 MAINLINE	2,101	LF
11	MANHOLE OFFSET TOP	1	EA
12	"DOG HOUSE" MANHOLE (LINED)	1	EA
13	MANHOLE (2 LINED)	6	EA



**PROJECT LOCATION MAP
(NOT TO SCALE)**



PROJECT LOCATION

SEBRING PARKWAY PHASE II ELEVATION CONVERSION:	
ELEVATION =	SEBRING PARKWAY PHASE II ELEVATIONS SHOWN ON PERMITTED PLANS AS SUBMITTED FOR SWFWMD ERP
NAVD 1988 =	ELEVATION - 0.98'
SOURCE: NOAA ORTHOMETRIC HEIGHT CONVERSION (VERTCON)	

sunshine state
ONE CALL
811

DIAL 811

Local No. 1-800-432-4770
Notification # 068600373
Call 48 hours before you dig.

STATE LAW REQUIRES EXCAVATORS TO CALL 811 BEFORE DIGGING PER THE "UNDERGROUND FACILITY DAMAGE PREVENTION AND SAFETY ACT" CHAPTER 556, FLORIDA STATUTES. FAILURE TO CALL CAN RESULT IN FINES FROM \$250 TO \$5,000.

UTILITY COMPANIES

Kenneth R. Lutz
CenturyLink Engineering
924 Memorial Dr.
Avon Park, FL 33825
(W) (863) 452-3185
(C) (863) 214-1490
(F) (863) 452-3472
ken.lutz@centurylink.com

Mark R. Manner
Sr. Engineer (Distribution)
Duke Energy
2051 Old Scenic Highway
Lake Wales, FL 33898
(863) 678-4476
Mark.Manner@duke-energy.com

Timothy Hinefelt
Comcast Cable
3010 Herring Av
Sebring, FL 33870
(C) (863) 273-8556
Timothy_Hinefelt@cable.comcast.com

Jerry Melendy
Sebring Gas System, Inc.
3515 US 27 N
Sebring, FL 33870
(863) 385-0194
(F) (863) 385-3123
jmelendy@floridasbestgas.com

City of Sebring
Bob Boggus
321 N Mango St
Sebring, FL 33870
(863) 471-5112
bobboggus@mysebring.com
jimables@mysebring.com waste water
GarvinEikhill@mysebring.com water

Highlands County (Fiber Optic cable)
Clinton "Gator" Howerton
505 S Commerce Av
Sebring, FL 33870
(863) 402-6877
chowerton@hcbcc.org

Highlands County Traffic
Edward Cardona
505 S Commerce Av
Sebring, FL 33870
(863) 402-6536
Ecardona@hcbcc.org

GOVERNING STANDARDS AND SPECIFICATIONS:
GOVERNING STANDARDS AND SPECIFICATIONS: FLORIDA DEPARTMENT OF TRANSPORTATION, FY 2019-2020 STANDARD PLANS AND REVISED INDEX DRAWINGS AS APPENDED HEREIN, AND 2019 STANDARD SPECIFICATIONS FOR ROAD AND BRIDGE CONSTRUCTION, AS AMENDED BY CONTRACT DOCUMENTS.

For Standard Plans click on the "Standard Plans" link at the following website:
<http://www.fdot.gov/design/StandardPlans/2019/default.shtm#Bridges> For the Standard Specifications for Road and Bridge Construction click on the "Specifications" link at the following website:
<http://www.fdot.gov/design/standardplans/current/default.shtm>

PLANS PREPARED BY HIGHLANDS COUNTY ENGINEERING DEPARTMENT ON BEHALF OF THE CITY OF SEBRING. ALL SERVICE LATERAL LOCATIONS & ELEVATIONS SHOWN HEREIN ARE BASED ON LOCATES PROVIDED BY THE CITY OF SEBRING. HIGHLANDS COUNTY SHALL NOT BE HELD LIABLE FOR ANY POTENTIAL FIELD ADJUSTMENTS DURING CONSTRUCTION OF THE PROPOSED GRAVITY SEWER SYSTEM RELOCATION.

ATTENTION IS DIRECTED TO THE FACT THAT THESE PLANS MAY HAVE BEEN ALTERED IN SIZE BY REPRODUCTION. THIS MUST BE CONSIDERED WHEN OBTAINING SCALED DATA.

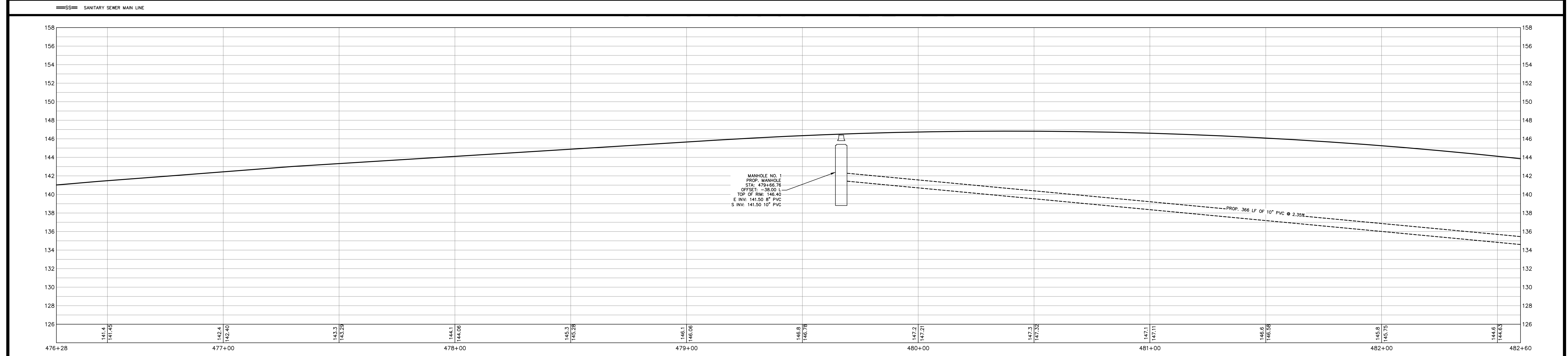
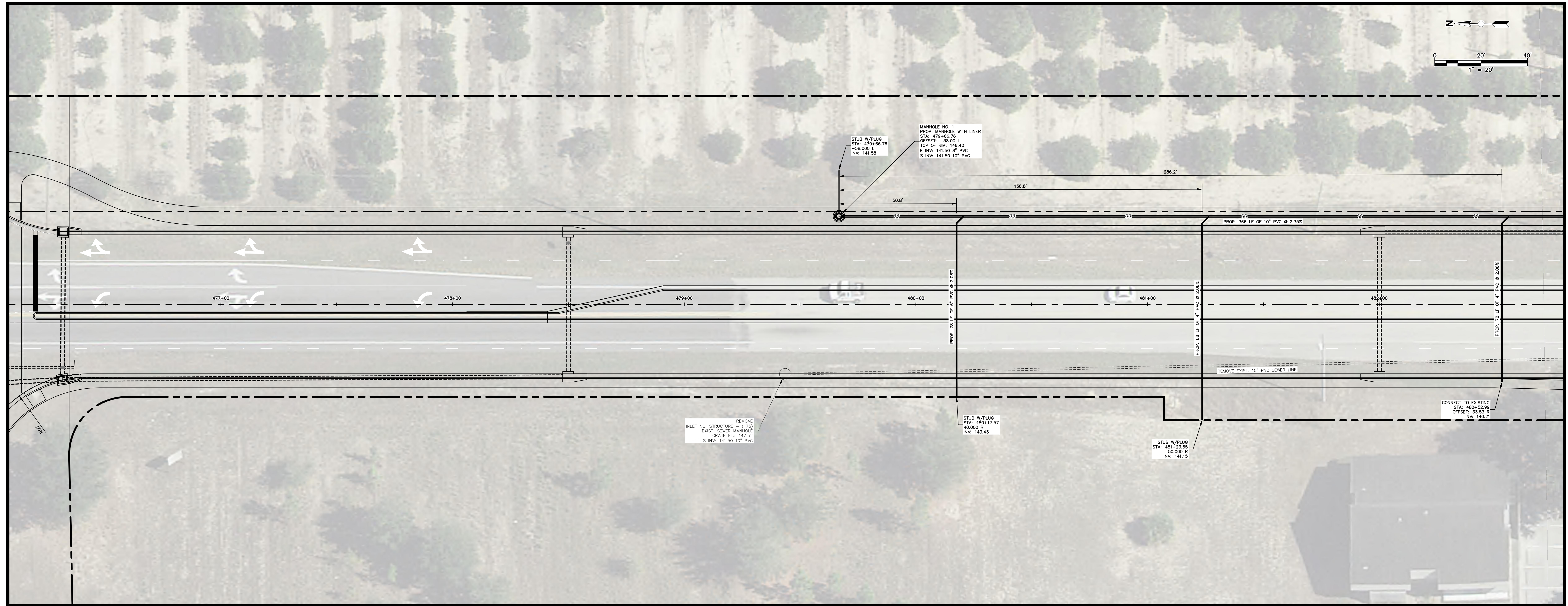
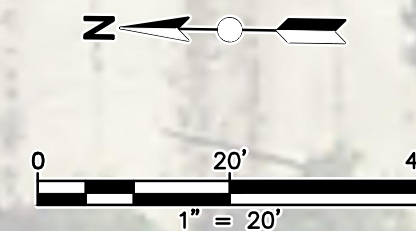
REVISIONS						STATUS		FOR BIDDING	HIGHLANDS COUNTY ENGINEERING DEPARTMENT 505 S. COMMERCE AVENUE SEBRING, FLORIDA 33870		SEBRING PARKWAY PHASE 2B SANITARY SEWER SYSTEM COVER SHEET	SCALE: HORIZ. N/A VERT. N/A	PROJECT NO. N/A	REV. 0
DATE	BY	DESCRIPTION	DATE	BY	DESCRIPTION									

DESIGNED BY: J.D. LANGFORD, JR., P.E.
 DRAWN BY: DOUG NIETUBICZ
 CHECKED BY: CLINTON HOWERTON, P.E.
 IN CHARGE: CLINTON HOWERTON, P.E.
 DATE: 12/5/2019

APPROVED BY: CLINTON HOWERTON, JR., P.E.
 FLORIDA REGISTRATION NO.: 61021

DATE:

G:\PROJECTS\Sebring Parkway Phase II\DWG\Sebring Parkway Phase II A and B\Phase II A & B Sewer & water line cover.dwg, Cover, Nietubicz, Douglas Colors As Black Except Gray Colors.ctb



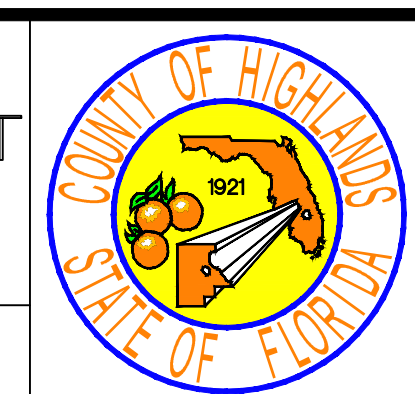
REVISIONS		STATUS
DATE	DESCRIPTION	
		FOR BIDDING

**HIGHLANDS COUNTY
ENGINEERING DEPARTMENT**
505 S. COMMERCE AVENUE
SEBRING, FLORIDA 33870

DESIGNED BY: J.D. LANGFORD, JR., P.E.
DRAWN BY: DOUG NIETUBICZ
CHECKED BY: CLINTON HOWERTON, P.E.
IN CHARGE: CLINTON HOWERTON, P.E.
DATE: 12/5/2019

APPROVED BY: CLINTON HOWERTON, JR., P.E.
FLORIDA REGISTRATION NO.: 61021

DATE: _____



**SEBRING PARKWAY PHASE 2B
SANITARY SEWER SYSTEM**
PLAN & PROFILE
STA 476+27.98 to STA 482+60

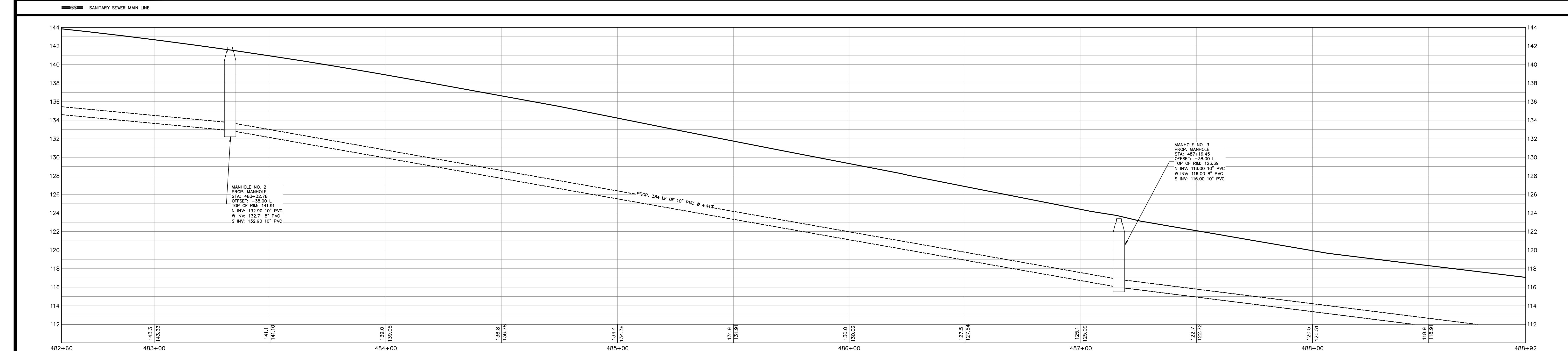
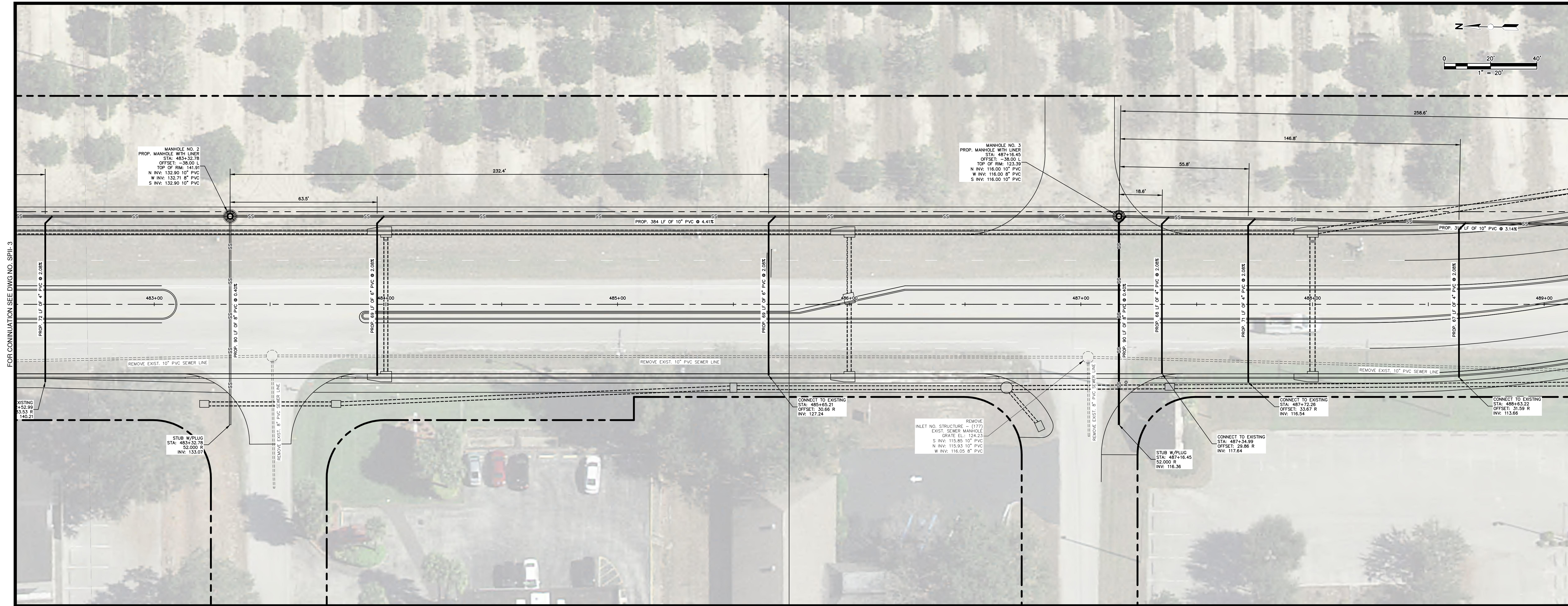
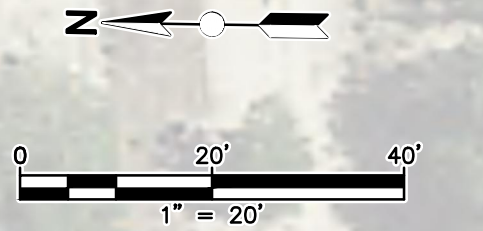
SCALE:
HORIZ. 1"=20'
VERT. 1"=4'

DRAWING NO. SP11-PP3	REV. 0
-------------------------	-----------

SHEET 3 OF 6

G:\PROJECTS\Sebring Parkway Phase II\DWG\Sebring Parkway Phase II A and B\Phase II A & B Sewer & water line.DWG, 3, Nietubicz, Douglas Colors As Black Except Gray Colors.ctb

FOR CONTINUATION SEE DWG NO. SP11-4



REVISIONS			STATUS	
DATE	BY	DESCRIPTION		
			FOR BIDDING	

DESIGNED BY: J.D. LANGFORD, JR., P.E.
 DRAWN BY: DOUG NIETUBICZ
 CHECKED BY: CLINTON HOWERTON, P.E.
 IN CHARGE: CLINTON HOWERTON, P.E.
 DATE: 12/5/2019

HIGHLANDS COUNTY ENGINEERING DEPARTMENT

505 S. COMMERCE AVENUE
SEBRING, FLORIDA 33870

APPROVED BY: CLINTON HOWERTON, JR., P.E.
FLORIDA REGISTRATION NO.: 61021

**SEBRING PARKWAY PHASE 2B
SANITARY SEWER SYSTEM**

PLAN & PROFILE

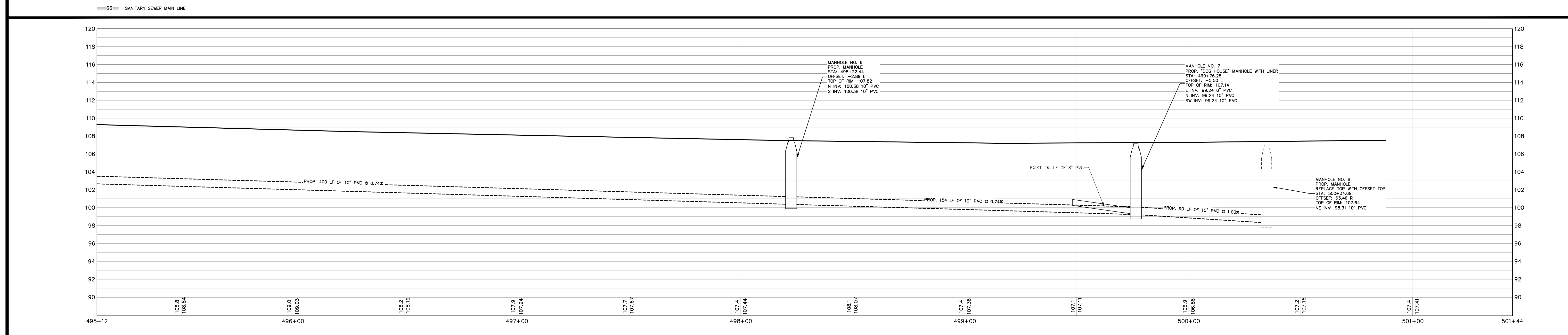
STA 482+60 TO STA 488+92

SCALE:
HORIZ. 1"=20'
VERT. 1"=4'

DRAWING NO. SPII-PP4 REV. 0

SHEET 4 OF 6

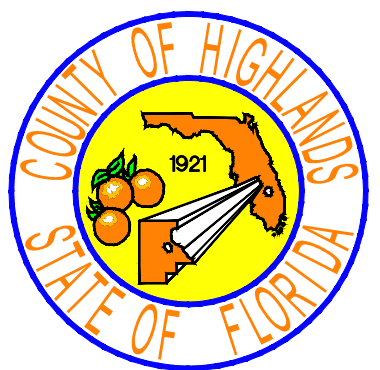
G:\PROJECTS\Sebring Parkway Phase II\DWG_Sebing Parkway Phase II A and B\Phase II A & B Sewer & water line.DWG, 4, Nietubicz, Douglas Colors As Black Except Gray Colors.ctb



REVISIONS		STATUS	
DATE	BY	DESCRIPTION	
			FOR BIDDING

DESIGNED BY: J.D. LANGFORD, JR., P.E.
DRAWN BY: DOUG NIETUBICZ
CHECKED BY: CLINTON HOWERTON, P.E.
IN CHARGE: CLINTON HOWERTON, P.E.
DATE: 12/5/2019

**HIGHLANDS COUNTY
ENGINEERING DEPARTMENT**
505 S. COMMERCE AVENUE
SEBRING, FLORIDA 33870



APPROVED BY: CLINTON HOWERTON, JR., P.E.
FLORIDA REGISTRATION NO.: 61021

DATE:

**SEBRING PARKWAY PHASE 2B
SANITARY SEWER SYSTEM**
PLAN & PROFILE
STA 495.24 TO STA 501+66

SCALE:
HORIZ. 1"=20'
VERT. 1"=4'

DRAWING NO. S11-PP6
REV. 0

SHEET 6 OF 6