



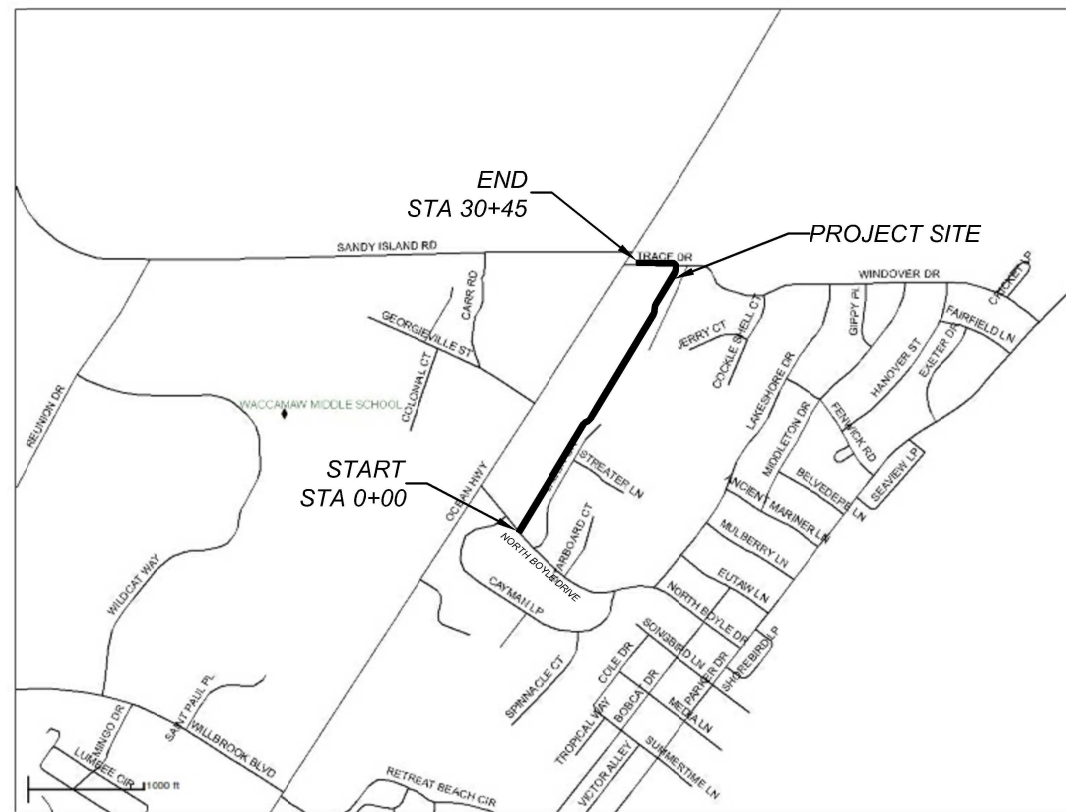
WACCAMAW NECK BIKEWAY NORTH-SOUTH BIKE LINK N. BOYLE DR. TO TRACE DR. DESIGN DRAWINGS

Project Contacts

Georgetown County	
Dept: Public Services Director	Contact: Ray C. Funnye
Address: 108 Screven Street Georgetown, SC 29440	
Phone: (843) 545-3325	
Dept: Stormwater Administrator	Contact: Tracy D. Jones, P.E.
Address: 129 Screven Street Georgetown, SC 29442	
Phone: (843) 545-3524	
Dept: Capital Projects Manager	Contact: Art Baker
Address: 1918 Church Street Georgetown, SC 29440	
Phone: (843) 545-3255	

Surveyor	
Name: PLS, Inc.	
Address: 400 CHURCH STREET Georgetown, SC 29442	
Phone: (843) 485-4405	

Utility Companies	
Dept: GCWSD	Contact: Tommy Kennedy
Address: PO Box 2730 Pawleys Island, SC 29585	
Phone: (843) 237-9719	
Dept: Santee Cooper	Contact: Bud Hennis
Phone: (843) 347-3399 (Ex 3802)	
Dept: Time Warner Cable	Contact: Dan Helmick
Phone: (843) 913-7994	
Dept: Frontier Communication	Contact: Robert Helms
Phone: (843) 655-7994	



LOCATION MAP

INDEX OF SHEETS			
SHEET #	SHEET TITLE	REV #	REV DATE
C-01	COVER SHEET		
C-02	GENERAL NOTES		
C-03	GENERAL LEGENDS		
C-04	SHEET INDEX		
C-05	PLAN AND PROFILE (STA 0+00 - 5+25)		
C-06	PLAN AND PROFILE (STA 5+25 - 10+50)		
C-07	PLAN AND PROFILE (STA 10+50 - 15+75)		
C-08	PLAN AND PROFILE (STA 15+75 - 21+00)		
C-09	PLAN AND PROFILE (STA 21+00 - 26+25)		
C-10	PLAN AND PROFILE (STA 26+25 - 30+45)		
C-11	SIGNAGE PLAN		
C-12	GRADING, DRAINAGE AND SEDIMENT AND EROSION CONTROL PLAN (STA 0+00 - 5+25)		
C-13	GRADING, DRAINAGE AND SEDIMENT AND EROSION CONTROL PLAN (STA 5+25 - 10+50)		
C-14	GRADING, DRAINAGE AND SEDIMENT AND EROSION CONTROL PLAN (STA 10+50 - 15+75)		
C-15	GRADING, DRAINAGE AND SEDIMENT AND EROSION CONTROL PLAN (STA 15+75 - 21+00)		
C-16	GRADING, DRAINAGE AND SEDIMENT AND EROSION CONTROL PLAN (STA 21+00 - 26+25)		
C-17	GRADING, DRAINAGE AND SEDIMENT AND EROSION CONTROL PLAN (STA 26+25 - 30+45)		
C-18	SEDIMENT AND EROSION CONTROL DETAILS		
C-19	TYPICAL DETAILS		
C-20	TYPICAL SECTIONS		

SWPPP LOCATION:

The OS-SWPPP is located at Project Identification Board at the entrance Morse Park. To view or make authorized modifications/updates to the SWPPP, locate an "County Employee" or "General Contractor".

CERTIFICATION STATEMENT:

I have placed my signature and seal on the design documents submitted signifying that I accept responsibility for the design of the system. Further, I certify to the best of my knowledge and belief that the design is consistent with the requirements of Title 48, Chapter 14 of the Code of Laws of SC, 1976 as amended, pursuant to Regulation 72-300 et seq. (if applicable), and in accordance with the terms and conditions of SCR 100000.

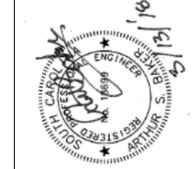
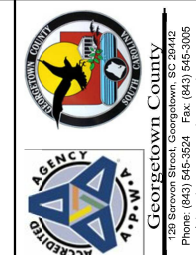
*****CAUTION*****



Know what's below.
Call before you dig.

THE UTILITIES SHOWN ARE SHOWN FOR THE CONTRACTOR'S CONVENIENCE ONLY. THERE MAY BE OTHER UTILITIES NOT SHOWN ON THESE PLANS. THE ENGINEER ASSUMES NO RESPONSIBILITY FOR THE LOCATIONS SHOWN AND IT SHALL BE THE CONTRACTOR'S RESPONSIBILITY TO VERIFY THE LOCATIONS OF ALL UTILITIES WITHIN THE LIMITS OF THE WORK. ALL DAMAGE MADE TO EXISTING UTILITIES BY THE CONTRACTOR SHALL BE THE SOLE RESPONSIBILITY OF THE CONTRACTOR.

GEORGETOWN COUNTY, SOUTH CAROLINA

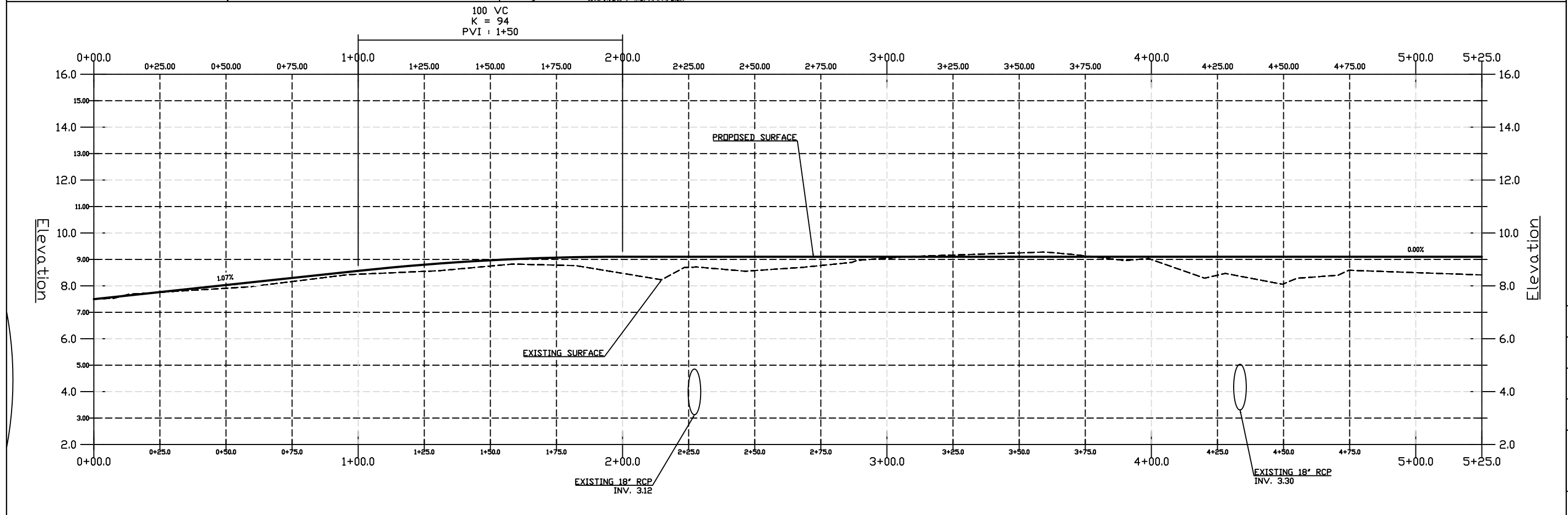
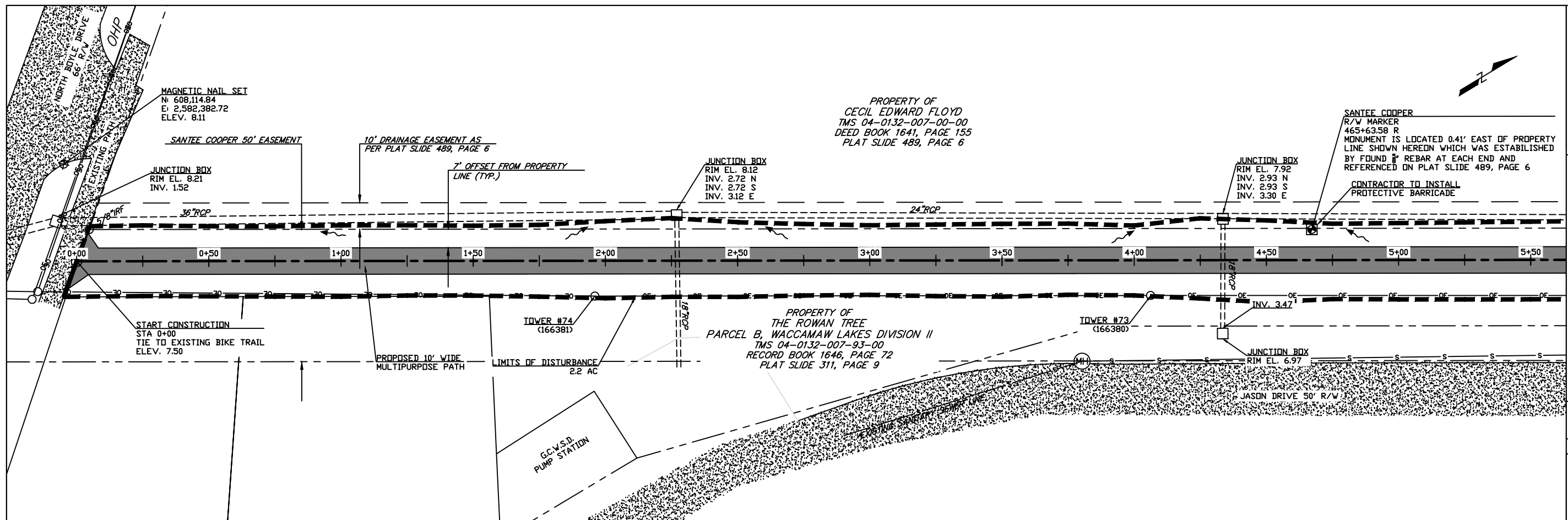



NO. 13-212018	DESIGN DRAWINGS
---------------	-----------------


NORTH SOUTH BIKE LINK (TRACE TO BOYLE DRIVE)
GEORGETOWN COUNTY, SOUTH CAROLINA

SCALE: N.T.S.
DESIGNED BY: ASB
DRAWN BY: MPM
DATE: 3/21/2018

COVER SHEET
SHEET NO: C-01




 GEORGETOWN COUNTY
 129 Sawwen Street, Georgetown, SC 29642
 Phone: (843) 545-3524 Fax: (843) 545-3005
 Internet: www.georgetowncountysc.org


 AGENCY

DESIGN DRAWINGS
 No. 6/7/2018

PROJECT:
 NORTH SOUTH BIKE LINK (TRACE TO BOYLE DRIVE)
 GEORGETOWN COUNTY, SOUTH CAROLINA

SCALE: H:1:40
 V:1:4

DESIGNED BY: ASB

DRAWN BY: MPM

DATE: 6/7/2018

PLAN AND PROFILE
 STA 0+00 - 5+25

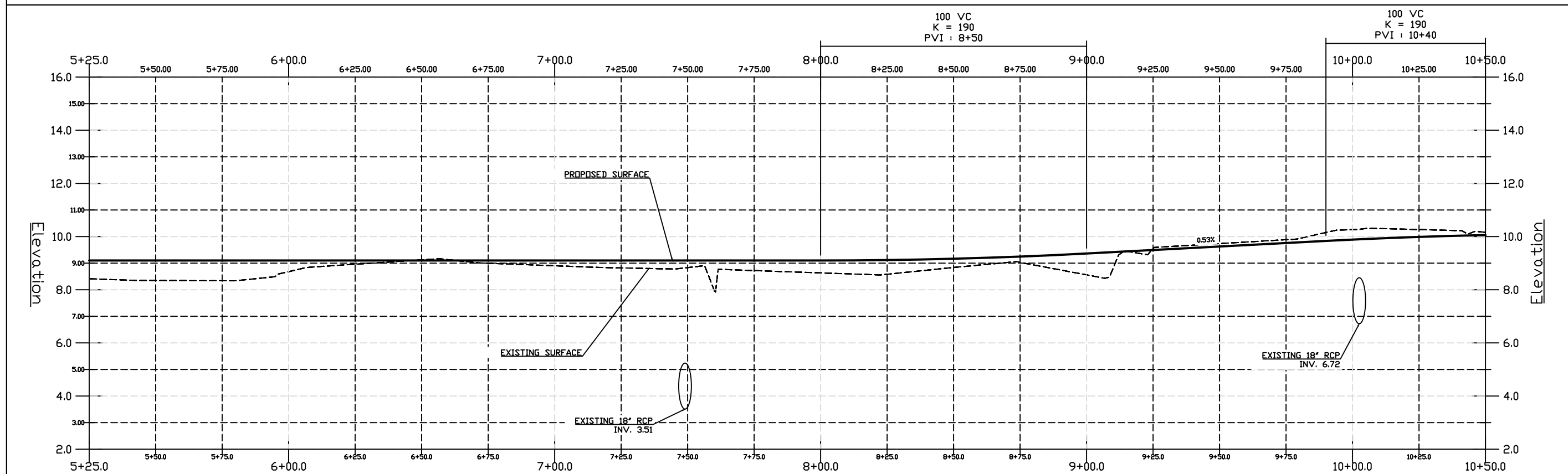
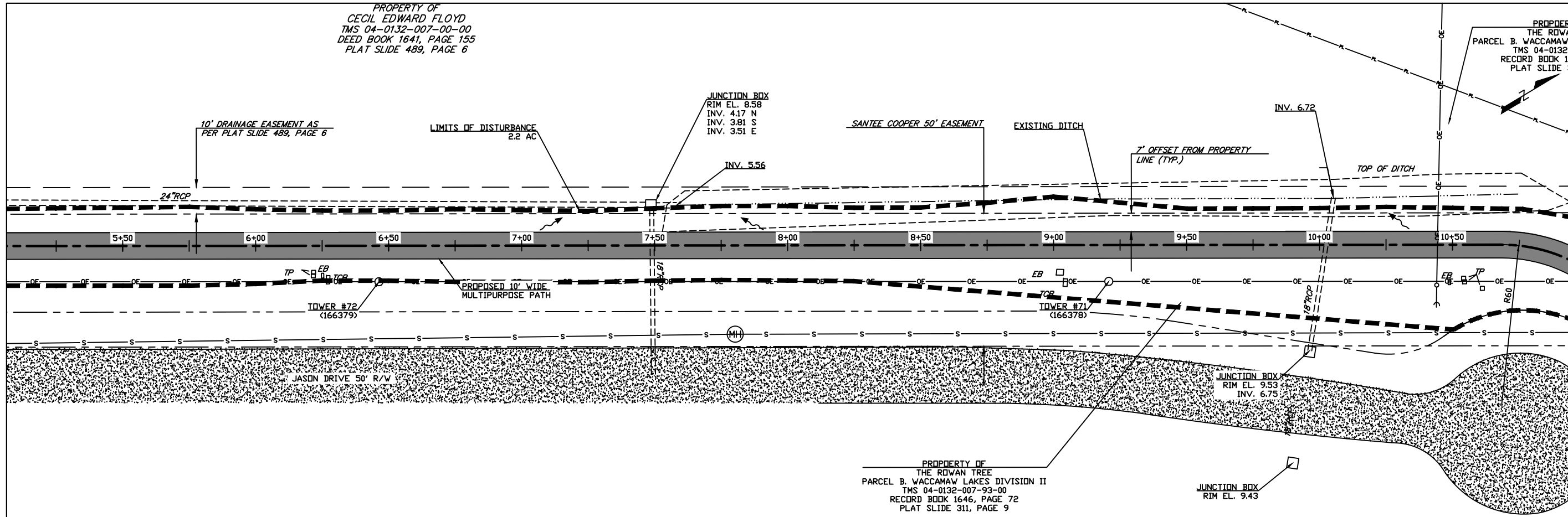
SHEET NO: C-05

PROPERTY OF
 CECIL EDWARD FLOYD
 TMS 04-0132-007-00-00
 DEED BOOK 1641, PAGE 155
 PLAT SLIDE 489, PAGE 6

PROPERTY
 THE ROWAN
 PARCEL B. WACCAMAW
 TMS 04-0132-007-00-00
 RECORD BOOK 1646, PAGE 72
 PLAT SLIDE 311, PAGE 9



129 Sawden Street, Georgetown, SC 29442
 Phone: (843) 545-3524 Fax: (843) 545-3005
 Internet: www.georgiainfocounty.gov



DESIGN DRAWINGS
 DATE: 6/7/2018

NORTH SOUTH BIKE LINK (TRACE TO BOYLE DRIVE)
 GEORGETOWN COUNTY, SOUTH CAROLINA

PROJECT:

SCALE: H:1:40
 V:1:4

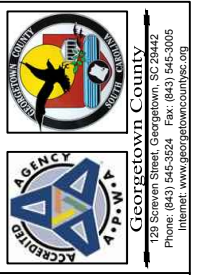
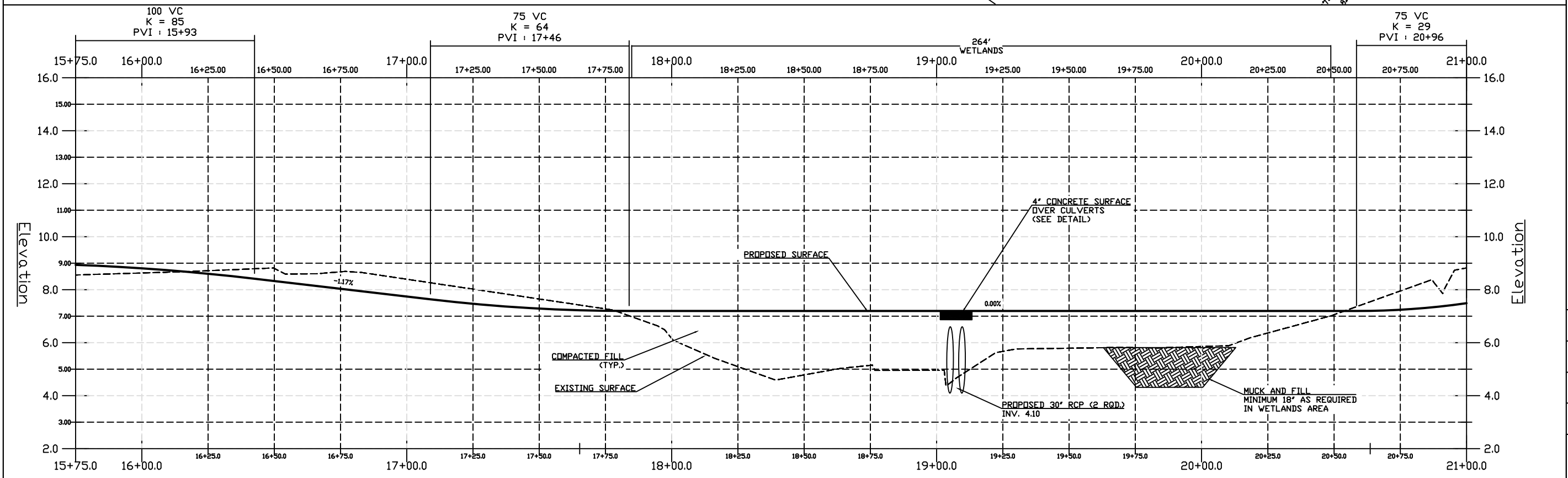
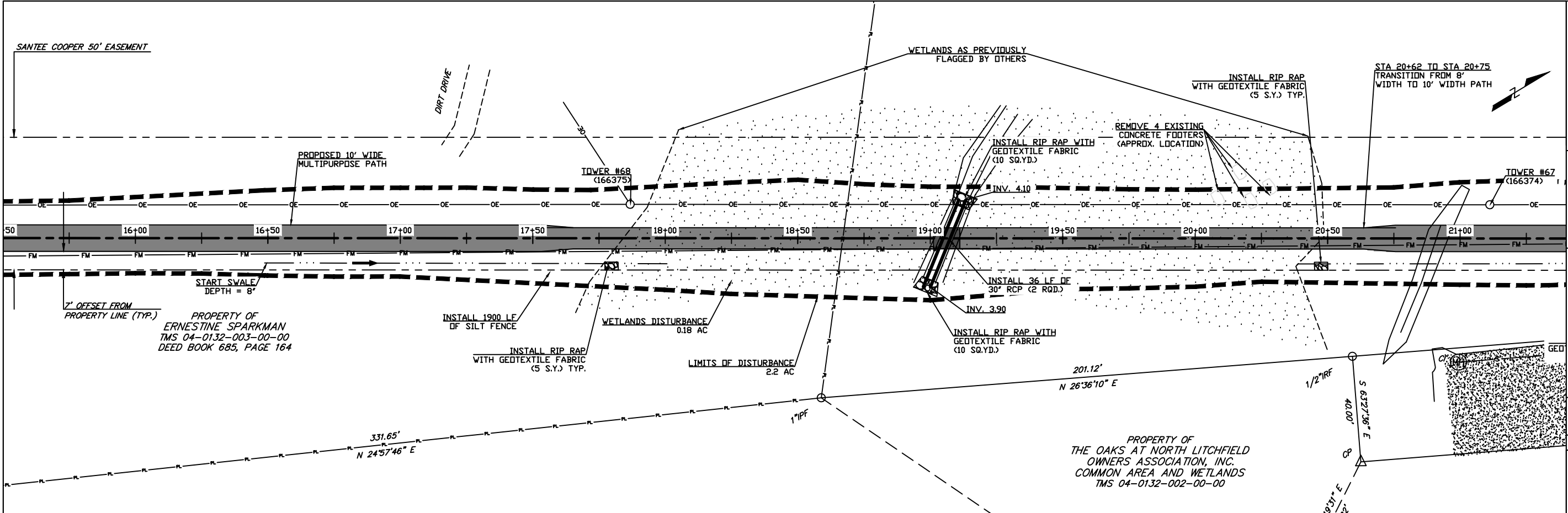
DESIGNED BY: ASB

DRAWN BY: MPM

DATE: 6/7/2018

PLAN AND PROFILE
 STA 5+25 - 10+50

SHEET NO: C-06

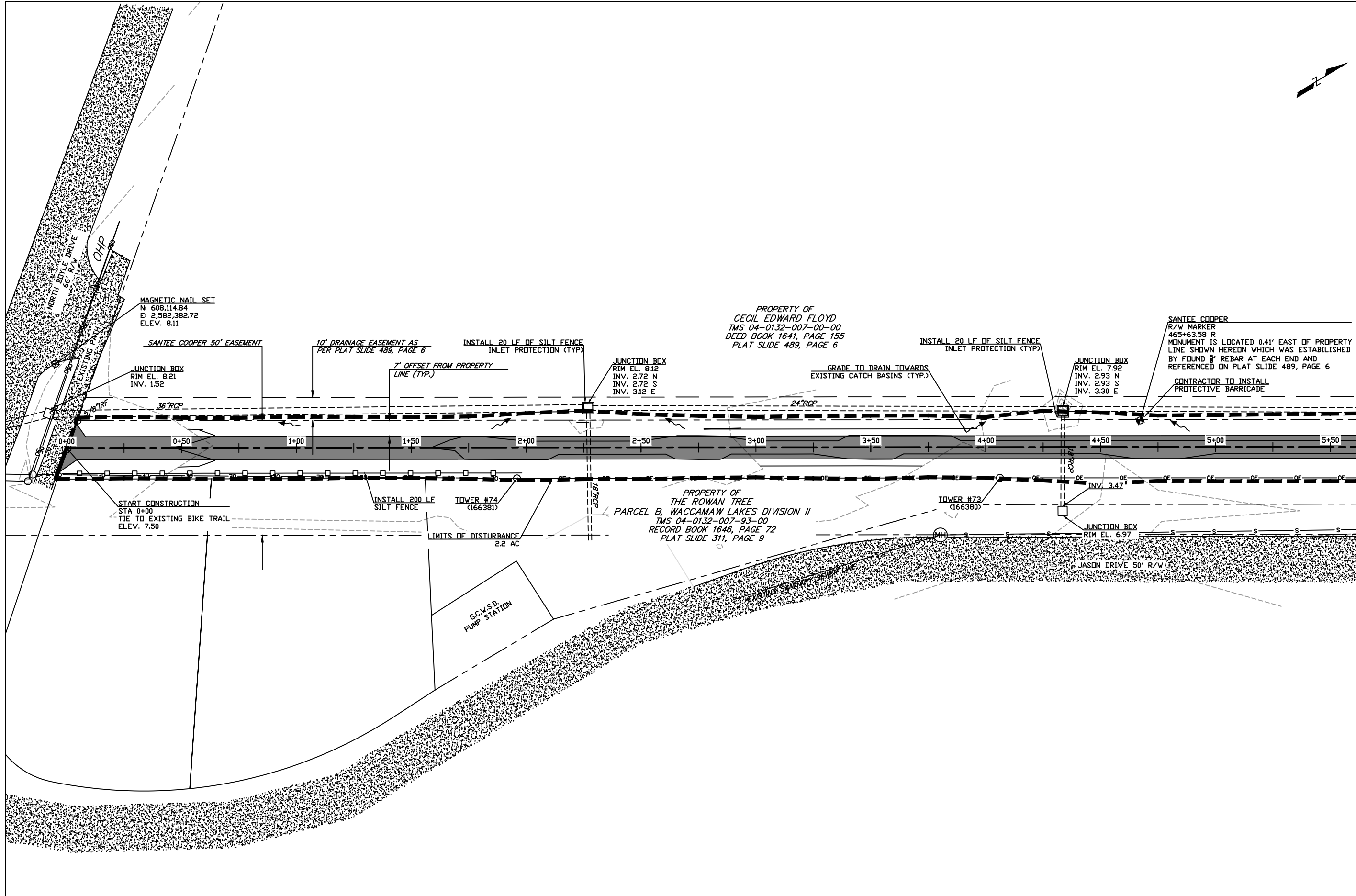


DESIGN DRAWINGS

DATE	6/7/2018
SCALE	H:1:40 V:1:4
DESIGNED BY	ASB
DRAWN BY	MPM
DATE	6/7/2018
PLAN AND PROFILE	STA 15+75 - 21+00
SHEET NO.	C-08

NORTH SOUTH BIKE LINK (TRACE TO BOYLE DRIVE)
 GEORGETOWN COUNTY, SOUTH CAROLINA

PROJECT:



Geotown County
 129 Sawden Street, Geotown, SC 29442
 Phone: (843) 545-3524 Fax: (843) 545-3005
 Internet: www.geotowncountysc.org

DESIGN DRAWINGS

NO.	DATE	DESCRIPTION
1	6/7/2018	

NORTH SOUTH BIKE LINK (TRACE TO BOYLE DRIVE)
 GEORGETOWN COUNTY, SOUTH CAROLINA

PROJECT:

SCALE: H:1:40

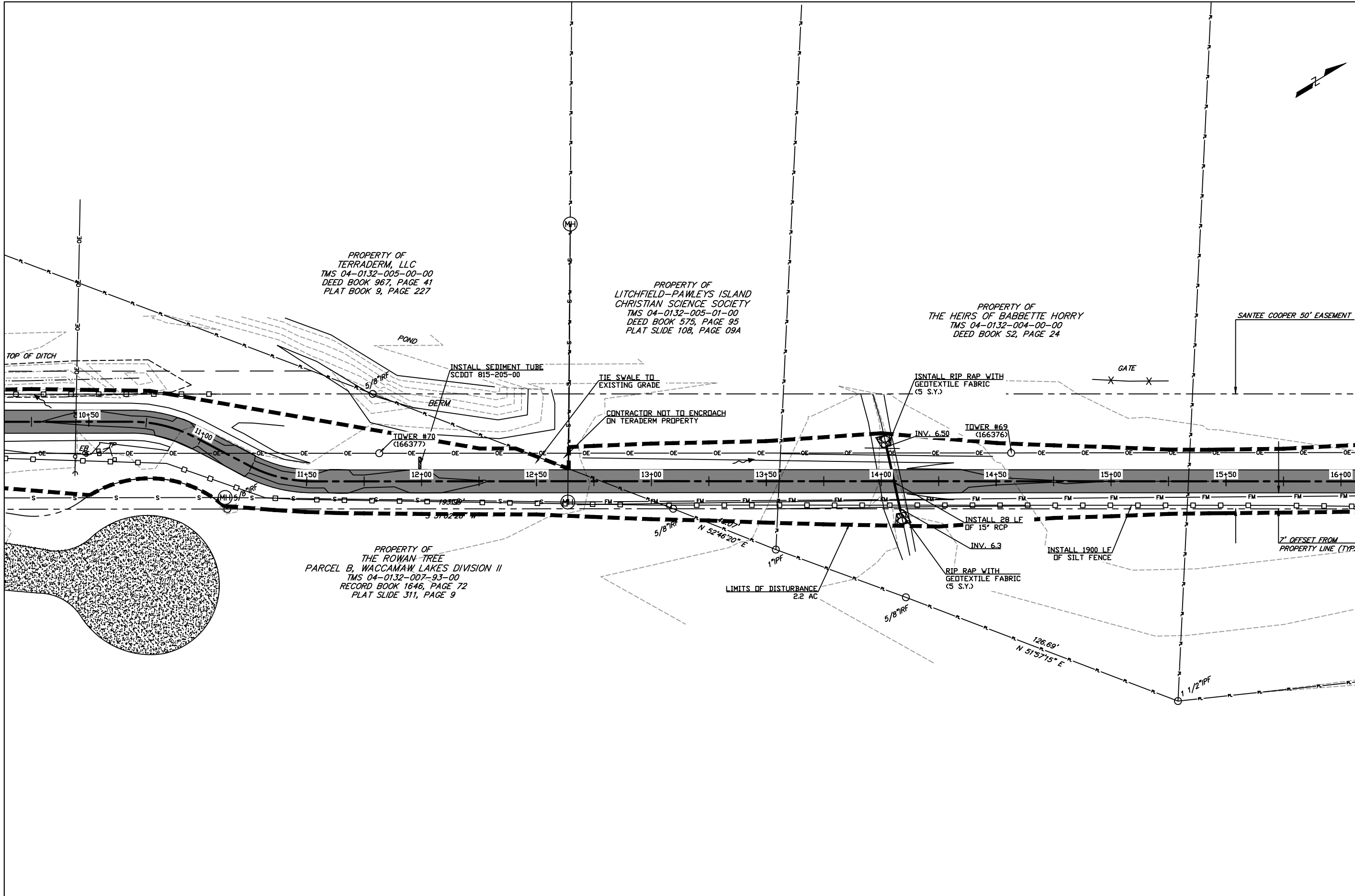
DESIGNED BY: ASB

DRAWN BY: MPM

DATE: 6/7/2018

GRADING, DRAINAGE AND
 SEDIMENT AND EROSION
 CONTROL PLAN (STA 0+00-5+25)

SHEET NO: C-12



Georgetown County
 129 Sawmills Street, Georgetown, SC 29442
 Phone: (843) 545-3524 Fax: (843) 545-3005
 Internet: www.georgetowncountysc.org

DESIGN DRAWINGS
 No. 1: 6/7/2018

NORTH SOUTH BIKE LINK (TRACE TO BOYLE DRIVE)
 GEORGETOWN COUNTY, SOUTH CAROLINA

PROJECT:

SCALE: H:1:40

DESIGNED BY: ASB

DRAWN BY: MPM

DATE: 6/7/2018

GRADING, DRAINAGE AND
 SEDIMENT AND EROSION
 CONTROL PLAN (STA 10+50-15+75)

SHEET NO: C-14

PROPERTY OF
ERNESTINE SPARKMAN
TMS 04-0132-003-00-00
DEED BOOK 685, PAGE 164

SANTEE COOPER 50' EASEMENT

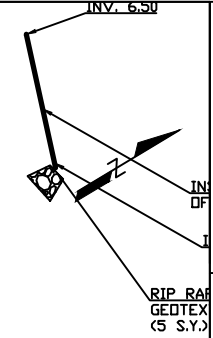
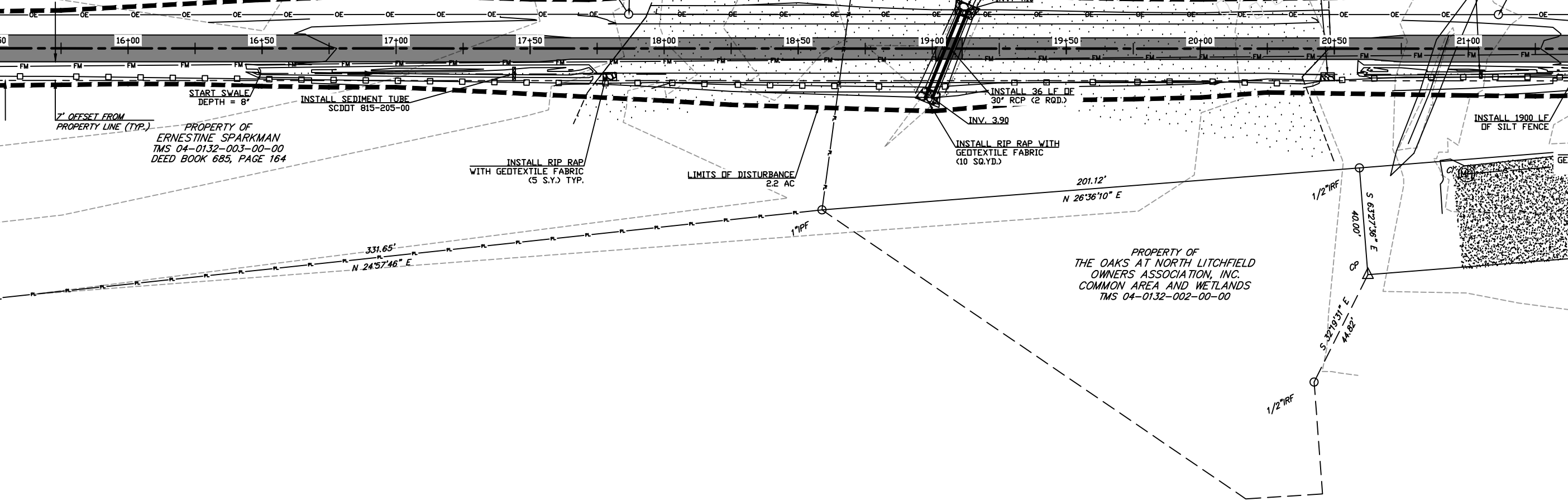
DIRT DRIVE


TOWER #68
(166375)

TOWER #67
(166374)

PROPERTY OF
ERNESTINE SPARKMAN
TMS 04-0132-003-00-00
DEED BOOK 685, PAGE 164

PROPERTY OF
THE OAKS AT NORTH LITCHFIELD
OWNERS ASSOCIATION, INC.
COMMON AREA AND WETLANDS
TMS 04-0132-002-00-00




 GEORGETOWN COUNTY
 129 Sawwen Street, Georgetown, SC 29442
 Phone: (843) 545-3524 Fax: (843) 545-3005
 Internet: www.georgetowncountysc.org

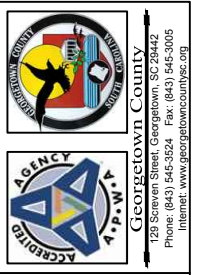
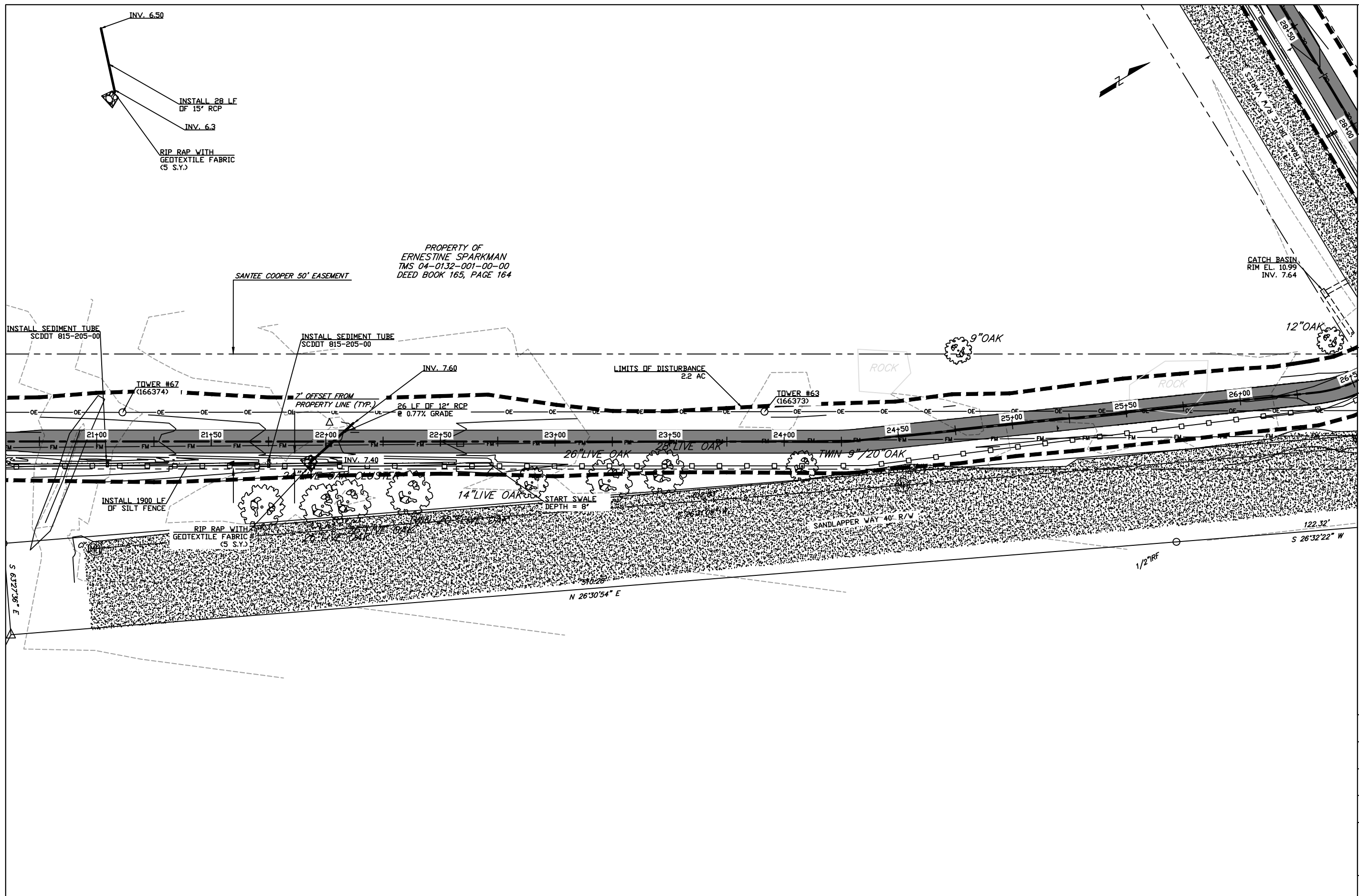
DESIGN DRAWINGS

NO. 1	6/7/2018
-------	----------

NORTH SOUTH BIKE LINK (TRACE TO BOYLE DRIVE)
GEORGETOWN COUNTY, SOUTH CAROLINA

PROJECT:

SCALE:	H:1:40
DESIGNED BY:	ASB
DRAWN BY:	MPM
DATE:	6/7/2018
GRADING, DRAINAGE AND SEDIMENT AND EROSION CONTROL PLAN (STA 15+75-21+00)	
SHEET NO:	C-15



DESIGN DRAWINGS

NO. 1	6/7/2018
-------	----------

NORTH SOUTH BIKE LINK (TRACE TO BOYLE DRIVE)
 GEORGETOWN COUNTY, SOUTH CAROLINA

PROJECT:

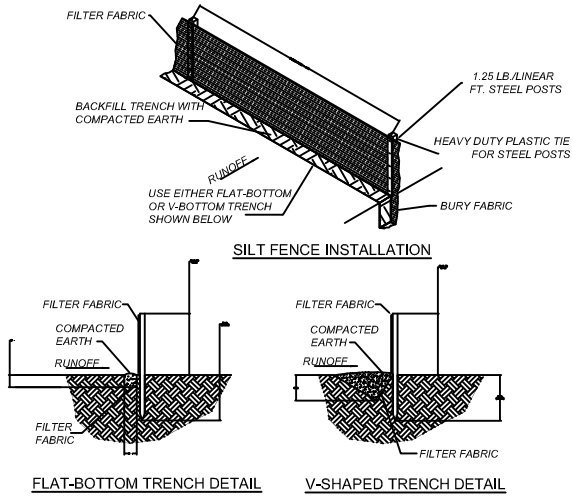
SCALE:	H:1:40
DESIGNED BY:	ASB
DRAWN BY:	MPM
DATE:	6/7/2018
GRADING, DRAINAGE AND SEDIMENT AND EROSION CONTROL PLAN (STA 21+00-26+25)	
SHEET NO:	C-16



DESIGN DRAWINGS
NO. 1
NO. 2
NO. 3
NO. 4
NO. 5
NO. 6
NO. 7
NO. 8
NO. 9
NO. 10
NO. 11
NO. 12
NO. 13
NO. 14
NO. 15
NO. 16
NO. 17
NO. 18
NO. 19
NO. 20
NO. 21
NO. 22
NO. 23
NO. 24
NO. 25
NO. 26
NO. 27
NO. 28
NO. 29
NO. 30
NO. 31
NO. 32
NO. 33
NO. 34
NO. 35
NO. 36
NO. 37
NO. 38
NO. 39
NO. 40
NO. 41
NO. 42
NO. 43
NO. 44
NO. 45
NO. 46
NO. 47
NO. 48
NO. 49
NO. 50

PROJECT:
 NORTH SOUTH BIKE LINK (TRACE TO BOYLE DRIVE)
 GEORGETOWN COUNTY, SOUTH CAROLINA

SCALE: N.T.S.
 DESIGNED BY: ASB
 DRAWN BY: MPM
 DATE: 3/21/2018
 SEDIMENT AND EROSION CONTROL DETAILS
 SHEET NO: C-18



South Carolina Department of Health and Environmental Control

STANDARD SILT FENCE DETAIL

SC-03 Page 1, 2 & 3 of 3

SILT FENCE DETAIL

WHEN AND WHERE TO USE IT
 SILT FENCE IS APPLICABLE IN AREAS WHERE THE MAXIMUM SHEET OR OVERLAND FLOW PATH LENGTH TO THE FENCE IS 100- FEET, WHERE THE MAXIMUM SLOPE STEEPNESS (NORMAL [PERPENDICULAR] TO FENCE LINE) IS 2H:1V, THAT DO NOT RECEIVE CONCENTRATED FLOWS GREATER THAN 0.5 CFS.

DO NOT PLACE SILT FENCE ACROSS CHANNELS OR USE IT AS A VELOCITY CONTROL BMP.

MATERIALS

STEEL POSTS
 USE 48-INCH LONG STEEL POSTS THAT MEET THE FOLLOWING MINIMUM PHYSICAL REQUIREMENTS: COMPOSED OF HIGH STRENGTH STEEL WITH MINIMUM YIELD STRENGTH OF 50,000 PSI. HAVE A STANDARD "T" SECTION WITH A NOMINAL FACE WIDTH OF 1.38-INCHES AND NOMINAL "T" LENGTH OF 1.48-INCHES. WEIGH 1.25 POUNDS PER FOOT (± 8%).

SOIL STABILIZATION PLATE
 HAVE A SOIL STABILIZATION PLATE WITH A MINIMUM CROSS SECTION AREA OF 17-SQUARE INCHES ATTACHED TO THE STEEL POSTS. PAINTED WITH A WATER BASED BAKED ENAMEL PAINT.

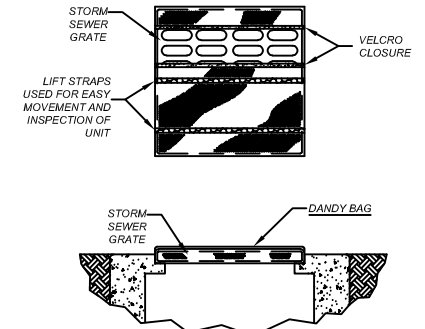
USE STEEL POSTS WITH A MINIMUM LENGTH OF 4- FEET, WEIGHING 1.25 POUNDS PER LINEAR FOOT (± 8%) WITH PROJECTIONS TO AID IN FASTENING THE FABRIC. EXCEPT WHEN HEAVY CLAY SOILS ARE PRESENT ON SITE, STEEL POSTS WILL HAVE A METAL SOIL STABILIZATION PLATE WELDED NEAR THE BOTTOM SUCH THAT WHEN THE POST IS DRIVEN TO THE PROPER DEPTH, THE PLATE WILL BE BELOW THE GROUND LEVEL FOR ADDED STABILITY. THE SOIL PLATES SHOULD HAVE THE FOLLOWING CHARACTERISTICS: BE COMPOSED OF MINIMUM 15 GAUGE STEEL HAVE A MINIMUM CROSS SECTION AREA OF 17-SQUARE INCHES.

GEOTEXTILE FILTER FABRIC
 FILTER FABRIC IS COMPOSED OF FIBERS CONSISTING OF LONG CHAIN SYNTHETIC POLYMERS COMPOSED OF AT LEAST 85% BY WEIGHT OF POLYOLEFINS, POLYESTERS, OR POLYAMIDES. FORMED INTO A NETWORK SUCH THAT THE FILAMENTS OR YARNS RELAY DIMENSIONAL STABILITY RELATIVE TO EACH OTHER. FREE OF ANY TREATMENT OR COATING WHICH MIGHT ADVERSELY ALTER ITS PHYSICAL PROPERTIES AFTER INSTALLATION. FREE OF DEFECTS OR FLAWS THAT SIGNIFICANTLY AFFECT ITS PHYSICAL AND/OR FILTERING PROPERTIES. CUT TO A MINIMUM WIDTH OF 36 INCHES.

USE ONLY FABRIC APPEARING ON SCODOT APPROVAL SHEET #34 MEETING THE REQUIREMENTS OF THE MOST CURRENT EDITION OF THE SCODOT STANDARD SPECIFICATIONS FOR HIGHWAY CONSTRUCTION.

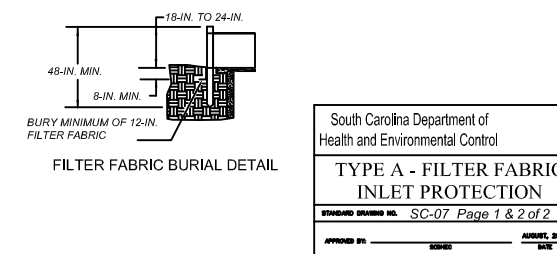
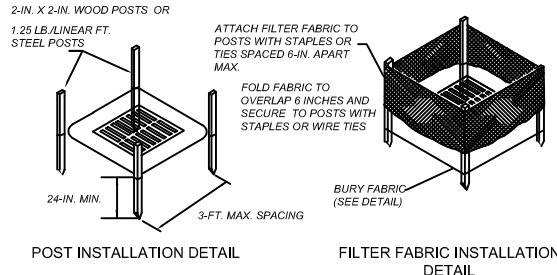
INSTALLATION
 EXCAVATE A TRENCH APPROXIMATELY 6-INCHES WIDE AND 6-INCHES DEEP WHEN PLACING FABRIC BY HAND. PLACE 12-INCHES OF GEOTEXTILE FABRIC INTO THE 6-INCH DEEP TRENCH, EXTENDING THE REMAINING 6-INCHES TOWARDS THE UPSLOPE SIDE OF THE TRENCH. BACKFILL THE TRENCH WITH SOIL OR GRAVEL AND COMPACT. BURY 12-INCHES OF FABRIC INTO THE GROUND WHEN PNEUMATICALLY INSTALLING SILT FENCE WITH A SLICING METHOD. PURCHASE FABRIC IN CONTINUOUS ROLLS AND CUT TO THE LENGTH OF THE BARRIER TO AVOID JOINTS. WHEN JOINTS ARE NECESSARY, WRAPPED THE FABRIC TOGETHER AT A SUPPORT POST WITH BOTH ENDS FASTENED TO THE POST, WITH A 6-INCH MINIMUM OVERLAP. INSTALL POSTS TO A MINIMUM DEPTH OF 24-INCHES. INSTALL POSTS A MINIMUM OF 1- TO 2- INCHES ABOVE THE FABRIC WITH NO MORE THAN 3- FEET OF THE POST ABOVE THE GROUND. SPACE POSTS TO MAXIMUM 6- FEET CENTERS. ATTACH FABRIC TO WOOD POSTS USING STAPLES MADE OF HEAVY-DUTY WIRE AT LEAST 1 1/2-INCH LONG, SPACED A MAXIMUM OF 6-INCHES APART. STAPLE A 2-INCH WIDE LATHE OVER THE FILTER FABRIC TO SECURELY FASTEN IT TO THE UPSLOPE SIDE OF WOODEN POSTS. ATTACH FABRIC TO THE STEEL POSTS USING HEAVY-DUTY PLASTIC TIES THAT ARE EVENLY SPACED AND PLACED IN A MANNER TO PREVENT SAGGING OR TEARING OF THE FABRIC. IN ALL CASES, TIES SHOULD BE AFFIXED IN NO LESS THAN 4 PLACES. INSTALL THE FABRIC A MINIMUM OF 24-INCHES ABOVE THE GROUND. WHEN NECESSARY, THE HEIGHT OF THE FENCE ABOVE GROUND MAY BE GREATER THAN 24-INCHES. IN TIDAL AREAS, EXTRA SILT FENCE HEIGHT MAY BE REQUIRED. THE POST HEIGHT WILL BE TWICE THE EXPOSED POST HEIGHT. POST SPACING WILL REMAIN THE SAME AND EXTRA HEIGHT FABRIC WILL BE 4-, 5-, OR 6- FEET TALL. LOCATE SILT FENCE CHECKS EVERY 100 FEET MAXIMUM AND AT LOW POINTS. INSTALL THE FENCE PERPENDICULAR TO THE DIRECTION OF FLOW AND PLACE THE FENCE THE PROPER DISTANCE FROM THE TOE OF STEEP SLOPES TO PROVIDE SEDIMENT STORAGE AND ACCESS FOR MAINTENANCE AND CLEANOUT.

INSPECTION AND MAINTENANCE
 INSPECT EVERY SEVEN CALENDAR DAYS AND WITHIN 24-HOURS AFTER EACH RAINFALL EVENT THAT PRODUCES 1/4-INCHES OR MORE OF PRECIPITATION. CHECK FOR SEDIMENT BUILDUP AND FENCE INTEGRITY. CHECK WHERE RUNOFF HAS ERODED A CHANNEL BENEATH THE FENCE, OR WHERE THE FENCE HAS SAGGED OR COLLAPSED BY FENCE OVERTOPPING. IF THE FENCE FABRIC TEARS, BEGINS TO DECOMPOSE, OR IN ANY WAY BECOMES INEFFECTIVE, REPLACE THE SECTION OF FENCE IMMEDIATELY. REMOVE SEDIMENT ACCUMULATED ALONG THE FENCE WHEN IT REACHES 1/3 THE HEIGHT OF THE FENCE, ESPECIALLY IF HEAVY RAINS ARE EXPECTED. REMOVE TRAPPED SEDIMENT FROM THE SITE OR STABILIZE IT ON SITE. REMOVE SILT FENCE WITHIN 30 DAYS AFTER FINAL STABILIZATION IS ACHIEVED OR AFTER TEMPORARY BEST MANAGEMENT PRACTICES (BMPs) ARE NO LONGER NEEDED. PERMANENTLY STABILIZE DISTURBED AREAS RESULTING FROM FENCE REMOVAL.



DANDY BAG INLET PROTECTION DETAIL

SCALE: N.T.S.



FILTER FABRIC INLET PROTECTION

MATERIALS:
 USE FILTER FABRIC THAT CONFORMS TO SCODOT STANDARD SPECIFICATIONS FOR HIGHWAY CONSTRUCTION (LATEST EDITION). REFER TO THE SILT FENCE GEOTEXTILE FABRICS APPROVAL SHEET #34.

USE STEEL POSTS THAT MEET THE FOLLOWING MINIMUM PHYSICAL REQUIREMENTS:
 BE COMPOSED OF HIGH STRENGTH STEEL WITH MINIMUM YIELD STRENGTH OF 50,000 PSI. HAVE A STANDARD "T" SECTION WITH A NOMINAL FACE WIDTH OF 1.38-INCHES AND NOMINAL "T" LENGTH OF 1.48-INCHES. WEIGHT 1.25 POUNDS PER FOOT (± 8%). BE PAINTED WITH A WATER BASED BAKED ENAMEL PAINT.

ATTACH FABRIC TO METAL POSTS WITH HEAVY-DUTY PLASTIC TIES.

INSTALLATION:
 EXCAVATE A TRENCH 6-INCHES WIDE AND 6-INCHES DEEP AROUND THE OUTSIDE PERIMETER OF THE INLET UNLESS THE FABRIC IS PNEUMATICALLY INSTALLED.

EXTEND THE FILTER FABRIC A MINIMUM OF 12-INCHES INTO THE TRENCH. BACKFILL THE TRENCH WITH SOIL OR CRUSHED STONE AND COMPACT OVER THE FILTER FABRIC UNLESS THE FABRIC IS PNEUMATICALLY INSTALLED.

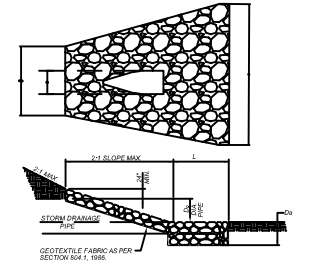
USE STEEL POSTS WITH A MINIMUM POST LENGTH OF 60-INCHES CONSISTING OF STANDARD "T" SECTIONS WITH A WEIGHT OF 1.25 POUNDS PER FOOT (± 8%). INSTALL THE FILTER FABRIC TO A MINIMUM HEIGHT OF 24-INCHES ABOVE GRADE. SPACE THE STEEL POSTS AROUND THE PERIMETER OF THE INLET A MAXIMUM OF 3- FEET APART AND DRIVE THEM INTO THE GROUND A MINIMUM OF 24-INCHES. CUT THE FILTER FABRIC FROM A CONTINUOUS ROLL TO THE LENGTH OF THE PROTECTED AREA TO AVOID THE USE OF JOINTS. WHEN JOINTS ARE NECESSARY, WRAP FILTER FABRIC TOGETHER ONLY AT A SUPPORT POST WITH BOTH ENDS SECURELY FASTENED TO THE POST, WITH A MINIMUM 6-INCH OVERLAP.

ATTACH FABRIC TO STEEL POSTS WITH HEAVY-DUTY PLASTIC TIES.

ATTACH AT LEAST FOUR (4) EVENLY SPACED TIES IN A MANNER TO PREVENT SAGGING OR TEARING OF THE FABRIC. IN ALL CASES, AFFIX TIES IN NO LESS THAN FOUR (4) PLACES.

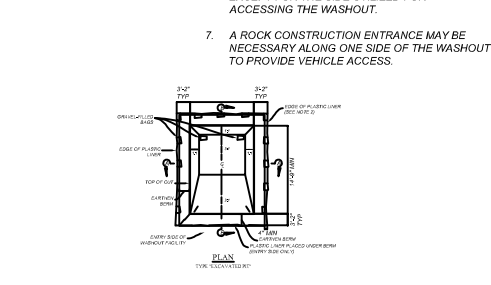
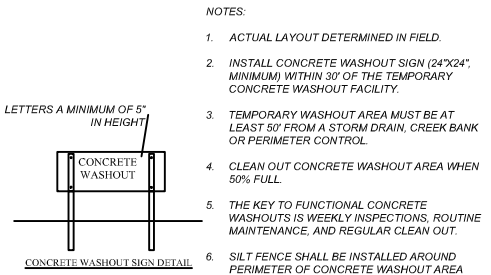
INSPECTION AND MAINTENANCE:
 INSPECTIONS SHOULD BE MADE EVERY 7 CALENDAR DAYS AND WITHIN 24-HOURS AFTER EACH STORM THAT PRODUCES 1/4-INCHES OR MORE OF RAIN. IF THE FABRIC BECOMES CLOGGED, IT SHOULD BE REPLACED. SEDIMENT SHOULD BE REMOVED WHEN IT REACHES APPROXIMATELY 1/3 THE HEIGHT OF THE FENCE. TAKE CARE NOT TO DAMAGE OR UNDERCUT FABRIC WHEN REMOVING SEDIMENT IF A SUMP IS USED. SEDIMENT SHOULD BE REMOVED WHEN IT FILLS APPROXIMATELY 1/3 THE DEPTH OF THE HOLE. MAINTAIN THE POOL AREA, ALWAYS PROVIDING ADEQUATE SEDIMENT STORAGE VOLUME FOR THE NEXT STORM.

STORM DRAIN INLET PROTECTION STRUCTURES SHOULD BE REMOVED ONLY AFTER THE DISTURBED AREAS ARE PERMANENTLY STABILIZED. REMOVE ALL CONSTRUCTION MATERIAL AND SEDIMENT AND DISPOSE OF THEM PROPERLY. GRADE THE DISTURBED AREA TO THE ELEVATION OF THE DROP INLET STRUCTURE CREST. USE APPROPRIATE PERMANENT STABILIZATION METHODS TO STABILIZE BARE AREAS AROUND THE INLET.



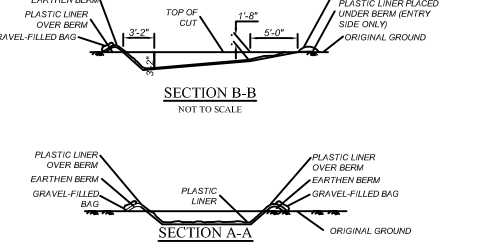
OUTLET PROTECTION DETAIL

SCALE: N.T.S.



NOTES:

- ACTUAL LAYOUT DETERMINED IN FIELD.
- INSTALL CONCRETE WASHOUT SIGN (24"x24" MINIMUM) WITHIN 30' OF THE TEMPORARY CONCRETE WASHOUT FACILITY.
- TEMPORARY WASHOUT AREA MUST BE AT LEAST 50' FROM A STORM DRAIN, CREEK BANK OR PERIMETER CONTROL.
- CLEAN OUT CONCRETE WASHOUT AREA WHEN 50% FULL.
- THE KEY TO FUNCTIONAL CONCRETE WASHOUTS IS WEEKLY INSPECTIONS, ROUTINE MAINTENANCE, AND REGULAR CLEAN OUT.
- SILT FENCE SHALL BE INSTALLED AROUND PERIMETER OF CONCRETE WASHOUT AREA EXCEPT FOR THE SIDE UTILIZED FOR ACCESSING THE WASHOUT.
- A ROCK CONSTRUCTION ENTRANCE MAY BE NECESSARY ALONG ONE SIDE OF THE WASHOUT TO PROVIDE VEHICLE ACCESS.



EXCAVATED PIT CONCRETE WASHOUT DETAIL

SCALE: N.T.S.

STABILIZED CONSTRUCTION ENTRANCE

WHEN AND WHERE TO USE IT
 STABILIZED CONSTRUCTION ENTRANCES SHOULD BE USED AT ALL POINTS WHERE TRAFFIC WILL BE LEAVING A CONSTRUCTION SITE AND MOVING DIRECTLY ONTO A PUBLIC ROAD.

IMPORTANT CONSIDERATIONS

IF WASHING IS USED, PROVISIONS MUST BE MADE TO INTERCEPT THE WASH WATER AND TRAP THE SEDIMENT BEFORE IT IS CARRIED OFF-SITE. WASHDOWN FACILITIES SHALL BE REQUIRED AS DIRECTED BY SCDHEC AS NEEDED. WASHDOWN AREAS IN GENERAL MUST BE ESTABLISHED WITH CRUSHED GRAVEL AND DRAIN INTO A SEDIMENT TRAP OR SEDIMENT BASIN.

CONSTRUCTION ENTRANCES SHOULD BE USED IN CONJUNCTION WITH THE STABILIZATION OF CONSTRUCTION ROADS TO REDUCE THE AMOUNT OF MUD PICKED UP BY VEHICLES.

INSTALLATION:
 REMOVE ALL VEGETATION AND ANY OBJECTIONABLE MATERIAL FROM THE FOUNDATION AREA. DIVERT ALL SURFACE RUNOFF AND DRAINAGE FROM STONES TO A SEDIMENT TRAP OR BASIN. INSTALL A NON-WOVEN GEOTEXTILE FABRIC PRIOR TO PLACING ANY STONE. INSTALL A CULVERT PIPE ACROSS THE ENTRANCE WHEN NEEDED TO PROVIDE POSITIVE DRAINAGE.

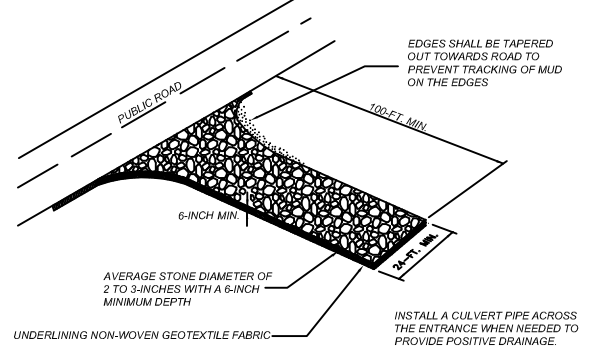
THE ENTRANCE SHALL CONSIST OF 1-INCH TO 3-INCH D50 STONE PLACED AT A MINIMUM DEPTH OF 6-INCHES. MINIMUM DIMENSIONS OF THE ENTRANCE SHALL BE 24- FEET WIDE BY 100- FEET LONG, AND MAY BE MODIFIED AS NECESSARY TO ACCOMMODATE SITE CONSTRAINTS. THE EDGES OF THE ENTRANCE SHALL BE TAPERED OUT TOWARDS THE ROAD TO PREVENT TRACKING OF MUD AT THE EDGE OF THE ENTRANCE.

INSPECTION AND MAINTENANCE:
 INSPECT CONSTRUCTION ENTRANCES EVERY SEVEN (7) CALENDAR DAYS AND WITHIN 24-HOURS AFTER EACH RAINFALL EVENT THAT PRODUCES 1/4-INCHES OR MORE OF PRECIPITATION, OR AFTER HEAVY USE. CHECK FOR MUD AND SEDIMENT BUILDUP AND PAD INTEGRITY. MAKE DAILY INSPECTIONS DURING PERIODS OF WET WEATHER. MAINTENANCE IS REQUIRED MORE FREQUENTLY IN WET WEATHER CONDITIONS. RESHAPE THE STONE PAD AS NEEDED FOR DRAINAGE AND RUNOFF CONTROL.

WASH OR REPLACE STONES AS NEEDED AND AS DIRECTED BY THE INSPECTOR. THE STONE IN THE ENTRANCE SHOULD BE WASHED OR REPLACED WHENEVER THE ENTRANCE FAILS TO REDUCE MUD BEING CARRIED OFF-SITE BY VEHICLES. FREQUENT WASHING WILL EXTEND THE USEFUL LIFE OF STONE.

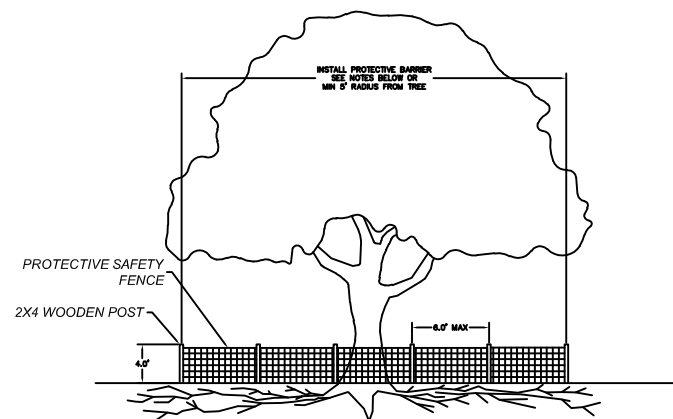
IMMEDIATELY REMOVE MUD AND SEDIMENT TRACKED OR WASHED ONTO PUBLIC ROADS BY BRUSHING OR SWEEPING. FLUSHING SHOULD ONLY BE USED WHEN THE WATER CAN BE DISCHARGED TO A SEDIMENT TRAP OR BASIN.

REPAIR ANY BROKEN PAVEMENT IMMEDIATELY.



STABILIZED CONSTRUCTION ENTRANCE

SCALE: N.T.S.

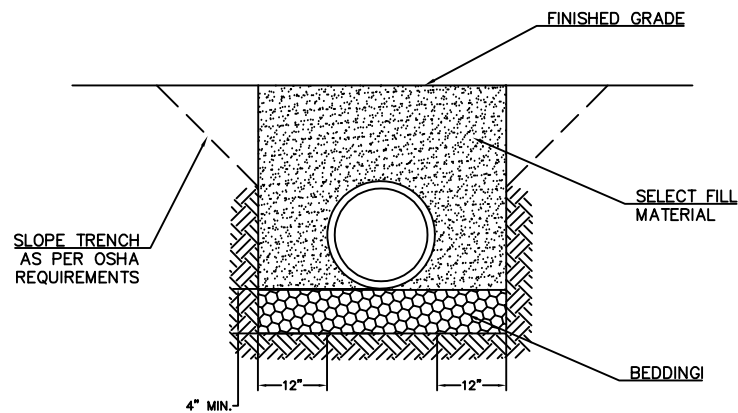


NOTES:

1. INSTALL PROTECTIVE BARRIERS AROUND TREES TO REMAIN TO BE A MINIMUM OF FEET OF THE DBH OF THE TREE IN INCHES SUCH AS A 24" DBH SHALL REQUIRE A 24" DIA BARRIER.
2. THE BARRIERS SHALL BE A MINIMUM OF 4 FT HIGH USING A POST AND RAIL SYSTEM CONSISTING OF 2X4 POST AND 1X4 RAILS

TREE PROTECTION DETAIL

SCALE: N.T.S.

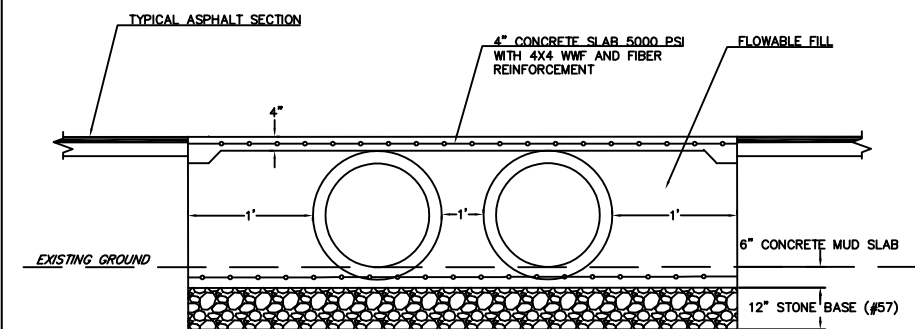


NOTES:

1. BEDDING SHALL BE COMPACTED CRUSHED STONE (CLASS 1 MATERIAL) SHAPED TO THE BOTTOM OF THE PIPE.
2. SELECT FILL SHALL BE NATIVE MATERIAL FREE OF LARGE ROCKS, DEBRIS OR ORGANICS AND PLACED IN 6" OR 8" LOOSE LIFTS AND COMPACTED TO MIN. 95% OF THE SOILS STANDARD PROCTOR, AND 98% WHEN UNDER PAVEMENT.

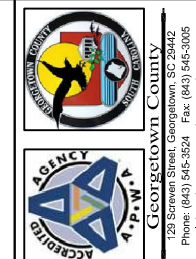
CLASS "C" STORM DRAINAGE BEDDING

SCALE: N.T.S.



TYPICAL SECTION TWO (2) - 30" RCP CROSSLINE

SCALE: N.T.S.



DESIGN DRAWINGS

NO. 3/21/2018

NORTH SOUTH BIKE LINK (TRACE TO BOYLE DRIVE)
GEORGETOWN COUNTY, SOUTH CAROLINA

PROJECT:

SCALE: N.T.S.

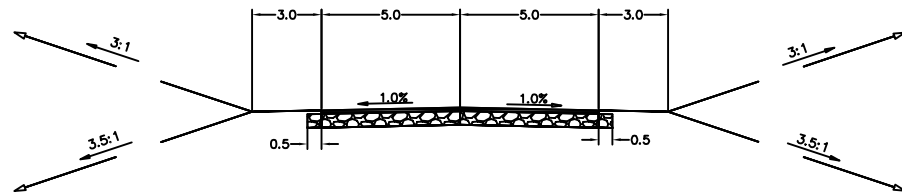
DESIGNED BY: ASB

DRAWN BY: MPM

DATE: 3/21/2018

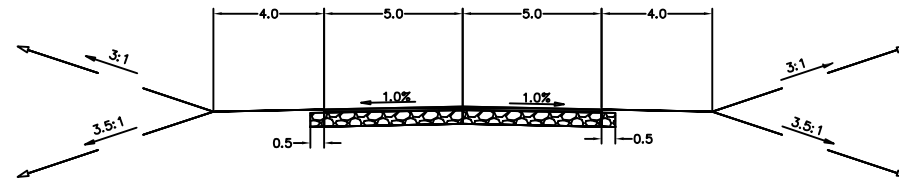
TYPICAL DETAILS

SHEET NO: C-19



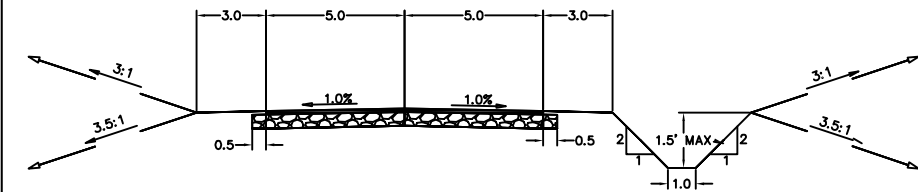
TYPICAL 10' PATH WITH 3' SHOULDER

STA 0+00 - 13+00
 STA 15+00 - 16+48.3
 STA 22+70.5 - 26+96.7
 STA 29+77.8 - 30+48
 SCALE: N.T.S.



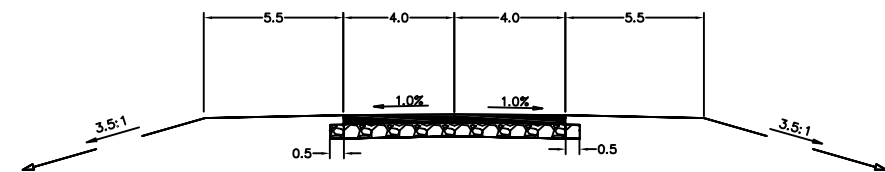
10' PATH WITH 4' SHOULDER

STA 13+00 - 15+00
 SCALE: N.T.S.



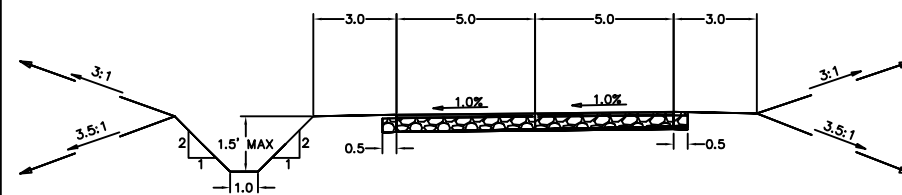
TYPICAL 10' PATH WITH SWALE

STA 16+48 - 17+72
 STA 20+61 - 22+70.5
 SCALE: N.T.S.



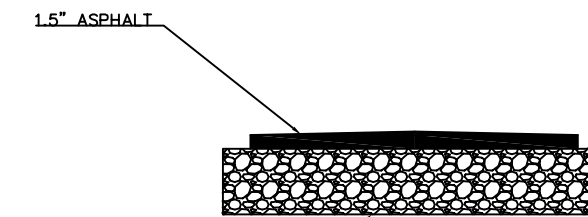
TYPICAL 8' PATH OVER WETLANDS

STA 17+72 - 20+61
 SCALE: N.T.S.



TYPICAL 10' PATH WITH CROSS SLOPES TOWARDS TRACE DRIVE DITCH

STA 26+96.7 TO 29+77.8
 SCALE: N.T.S.

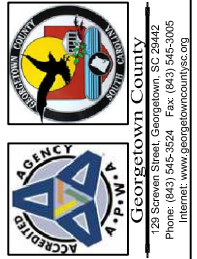


1.5" ASPHALT

6" G.A.B.C. COMPACTED
 TO 100% MAX DENSITY
 AASHTO T-180

TYPICAL PAVEMENT DETAIL

SCALE: N.T.S.



DESIGN DRAWINGS

NO. 16132018

NORTH SOUTH BIKE LINK (TRACE TO BOYLE DRIVE)
 GEORGETOWN COUNTY, SOUTH CAROLINA

PROJECT:

SCALE: N.T.S.

DESIGNED BY: ASB

DRAWN BY: MPM

DATE: 6/13/2018

TYPICAL SECTIONS

SHEET NO: C-20