

OFFICE INTERIOR RENOVATION FOR UNION COUNTY HIGH SCHOOL

150 MAIN ST UNION COUNTY, TENNESSEE

PLANS REVIEW DATA

TENNESSEE STATE FIRE MARSHAL'S OFFICE
GOVERNING CODES & GUIDELINES

2012 INTERNATIONAL BUILDING CODE
2012 INTERNATIONAL EXISTING BUILDING CODE
2012 INTERNATIONAL MECHANICAL CODE
2012 INTERNATIONAL PLUMBING CODE
2012 INTERNATIONAL FUEL GAS CODE
2012 NFPA 101 LIFE SAFETY CODE
2017 NATIONAL ELECTRICAL CODE
2009 ICC / ANSIA117.1

STATEMENT OF INTENT

GEORGE ARMOUR EWART, ARCHITECT HAS, TO THE BEST OF ITS PROFESSIONAL EFFORTS, DESIGNED AND PRODUCED THESE DRAWINGS TO COMPLY WITH ALL LOCAL, STATE, AND FEDERAL CODES APPLICABLE TO THIS PROJECT ON THE DAY OF ISSUANCE, WITHOUT BEING SUBJECT TO JUDICIAL INTERPRETATION AND TO BEST OF OUR KNOWLEDGE, THESE DRAWINGS ARE ALSO IN COMPLIANCE WITH THE 2010 AMERICANS WITH DISABILITIES ACT (ADA) STANDARDS FOR ACCESSIBLE DESIGN.

OWNER

UNION COUNTY PUBLIC EDUCATION

PROJECT ADDRESS

150 MAIN ST
UNION COUNTY, TENNESSEE 37807

OCCUPANCY CLASSIFICATION

IBC: GROUP E, EDUCATIONAL BUSINESS ACCESSORY
OCCUPANT LOAD WORK AREA= 814 SQFT/100 =9 OCCUPANTS

BUILDING CLASSIFICATION

TYPE II-B, UNPROTECTED, SPRINKLERED, TWO-STORY

STRUCTURAL FRAME

0

BEARING WALLS

EXTERIOR: 0
INTERIOR: 0

NON-BEARING WALLS & PARTITIONS

EXTERIOR: 0
INTERIOR: 0

FLOOR CONSTRUCTION

0

ROOF CONSTRUCTION

0

FLOOR AREA

NUMBER OF STORIES: 2 EXISTING TO REMAIN (2 MAX.)
MAX AREA ALLOWED: 14,500+ S.F. PER FLR.
ACTUAL AREA: EXISTING TO REMAIN

THIS PROJECT CONSISTS OF INTERIOR RENOVATION w/ NO INTERFERENCE OF EXTERIOR WALLS OR ROOF SYSTEMS. ALL EXISTING SYSTEMS SHALL REMAIN AS IS AND ARE NOT PART OF THE SCOPE FOR THIS PROJECT.

ABBREVIATIONS

ACT	ACOUSTICAL TILE
AFF	ABOVE FINISH FLOOR
ALT	ALTERNATE
ALUM	ALUMINUM
BLKG	BLOCKING
BLDG.	BUILDING
CAB	CABINET
CT	CERAMIC TILE
C/C	CENTER TO CENTER
CCT	CUBICLE CURTAIN TRACK
CL or CL	CENTER LINE
CG	CORNER GUARD
CLR	CLEAR
CMP	CORRUGATED METAL PIPE
CMU	CONCRETE BLOCK MASONRY UNIT
COL.	COLUMN
CONC.	CONCRETE
CPT	CARPET
DBL.	DOUBLE
DF	DRINKING FOUNTAIN
DFG	DOOR FRAME GUARD
DS	DOWNSPOUT
DT	DRAPERY TRACK
EGG	EXISTING CORNER GUARD
ELEV.	ELEVATION
EP	ELECTRICAL PANEL
EWC	ELECTRIC WATER COOLER
EXP. JT. or EJ	EXPANSION JOINT
EXIST or EX	EXISTING
FF	FINISH FLOOR
FCU	FAN COIL UNIT
FIN	FINISH
FOB	FACE OF BRICK
FOM	FACE OF MASONRY
FOS	FACE OF STUD
F/F	FACE TO FACE
FD	FLOOR DRAIN
FE	FIRE EXTINGUISHER
FEC	FIRE EXTINGUISHER CABINET
FHC	FIRE HOSE CABINET
GALV.	GALVANIZED
GB	GRAB BAR
GC or GEN. CON	GENERAL CONTRACTOR
GFI	GROUND FAULT INTERRUPT
GP	GUARD POST
GYP. BD.	GYPSPUM BOARD
HC	HANDICAP
HPDL	HIGH PRESSURE DECORATIVE LAMINATE
INSUL.	INSULATION
INV.	INVERT (ELEVATION)
JT.	JOINT
MBL	MARBLE
MTL	METAL
N/A	NOT APPLICABLE
NC	NONE COMBUSTIBLE
NIC	NOT IN CONTRACT
NOM	NOMINAL
OC	ON CENTER
OFCI	OWNER FURNISHED, CONTRACTOR INSTALLED
OH or OPP HD	OPPOSITE HAND
OS/OS	OUTSIDE TO OUTSIDE
P. LAM or PL	PLASTIC LAMINATE
PART	PARTIAL
PLAST	PLASTER
PT	PAINT
PTD	PAPER TOWEL DISPENSER
PTME	PATCH TO MATCH EXISTING
PTN	PARTITION
REF.	REFRIGERATOR
REV	REVISION
SD	SOAP DISPENSER
SF or SQ. FT	SQUARE FEET
SQ. IN	SQUARE INCHES
SHV	SHEET VINYL
T&G	TONGUE AND GROOVE
TOS	TOP OF STEEL
TME	TO MATCH EXISTING
TWL	TOWEL BAR
TKBD	TACK BOARD
TPH	TOILET PAPER HOLDER
UNO	UNLESS NOTED OTHERWISE
V	VINYL
VCT	VINYL COMPOSITION TILE
VIF	VERIFY IN FIELD
WC	WALL COVERING OR WATER CLOSET
WD	WOOD
WG	WALL GUARD

DRAFTING CONVENTIONS

	CONCRETE MASONRY (PLAN)
	CONCRETE MASONRY (SECTION)
	BRICK
	CONCRETE
	PRECAST CONCRETE
	STONE
	STEEL
	GYPSPUM BOARD
	PLYWOOD OR COMPOSITE WOOD
	RIGID BOARD INSULATION
	BATT OR LOOSE INSULATION
	FINISH WOOD
	SOUND INSULATED PARTITION
	1 HOUR RATED PARTITION
	2 HOUR RATED PARTITION
	SMOKE RESISTANT WALL
	CENTERLINE / COLUMN LINE

GRAPHICS SYMBOLS

	DOOR NO. DESIGNATION
	REVISION MARKER
	WINDOW DESIGNATION
	DETAIL OR SECTION NO. SHEET DRAWN ON
	INTERIOR ELEVATION NO. SHEET DRAWN ON
	SECTION NO. SHEET DRAWN ON
	EXTERIOR ELEVATION SHEET DRAWN ON
	ENLARGED AREA SHEET DRAWN ON
	INTERIOR PARTITION TYPE

GENERAL NOTES:

- CONTRACTOR SHALL VERIFY ALL ON-SITE DIMENSIONS. DO NOT SCALE DRAWINGS. IF DIMENSIONS ARE IN QUESTION, THE CONTRACTOR SHALL OBTAIN WRITTEN CLARIFICATION FROM THE ARCHITECT BEFORE CONTINUING WITH CONSTRUCTION.
- DIMENSIONS ARE REFERENCED TO FACE OF NEW INTERIOR STUD WALLS, COLUMN CENTERLINES & TO THE FACE OF EXTERIOR WALLS UNLESS OTHERWISE INDICATED.
- PROVIDE PRESSURE TREATED WOOD FOR CONCEALED MEMBERS IN CONTACT WITH MASONRY OR CONCRETE.
- PROVIDE FIRE-RETARDANT TREATED WOOD BLOCKING IN WALLS TO SUPPORT EQUIPMENT, RAILINGS, ACCESSORIES, DRAPERY TRACKS, RECESSED ITEMS, ETC. AS REQD. HANDRAILS, GRAB BARS AND WALL MOUNTED TOILET FIXTURES SHALL BE INSTALLED TO WITHSTAND A MIN. VERT. OR HORIZ. FORCE OF 250 LBS.
- MAINTAIN THE INTEGRITY OF RATED WALLS AT ELECTRICAL PANELS, FIRE EXTINGUISHER CABINETS & ALL RECESSED EQUIPMENT. FOR ALL RATED PARTITIONS, THE SURFACE AREA OF INDIVIDUAL METALLIC OUTLET OR SWITCH BOXES SHALL NOT EXCEED 16 SQUARE INCHES. THE AGGREGATE SURFACE AREA OF THE BOXES SHALL NOT EXCEED 100 SQUARE INCHES PER 100 SQUARE FEET. BOXES LOCATED ON OPPOSITE SIDES OF WALLS OR PARTITIONS SHALL BE SEPARATED BY A HORIZONTAL DISTANCE OF 24 INCHES MINIMUM.
- ALL RATED PARTITIONS SHALL BE TIGHTLY SEALED TO THE UNDERSIDE OF DECK. INTEGRITY OF RATED PARTITIONS SHALL BE MAINTAINED AT CORNERS AND INTERSECTIONS OF OTHER PARTITION TYPES.
- EACH PENETRATION IN RATED PARTITIONS FOR CONDUIT, PIPING OR OTHER ITEMS SHALL BE PROTECTED BY AN APPROVED UL-LISTED ASSEMBLY TO PROHIBIT THE PASSAGE OF FIRE AND SMOKE.
- CONTRACTOR SHALL VERIFY AND COORDINATE ROUTING, PLACEMENT, SPACE & CLEARANCE REQUIREMENTS FOR MECHANICAL, ELECTRICAL, & OTHER TRADES - REFERENCE PLUMBING, MECHANICAL & ELECTRICAL DRAWINGS.
- ALL PIPING ABOVE GRADE AND INSIDE THE BUILDING SHALL BE CONCEALED, EXCEPT MECHANICAL EQUIPMENT ROOMS. CONTRACTOR SHALL COORDINATE WITH OTHER TRADES TO PROVIDE FURRING FOR PIPING INSTALLED IN FINISHED AREAS.
- THE CONTRACTOR SHALL FURNISH ACCESS PANELS IN WALLS AND NON-ACCESSIBLE TYPE CEILINGS WHERE SERVICE AND ADJUSTMENT TO MECHANICAL, PLUMBING, AND ELECTRICAL ITEMS MAY BE REQUIRED. ACCESS PANELS SHALL HAVE A FIRE RATING EQUAL TO THAT OF THE SURFACE IN WHICH THEY OCCUR. LOCATION OF ACCESS PANELS SHALL BE APPROVED BY THE ARCHITECT PRIOR TO THE APPLICATION OF GYPSPUM BOARD.
- ALL CASEWORK DIMENSIONS SHALL BE FIELD VERIFIED PRIOR TO UNIT FABRICATION.
- SEAL ALL PENETRATIONS IN THE EXTERIOR ENVELOPE AIR TIGHT AT BOTH THE INTERIOR (VAPOR RETARDER AND GYPSPUM BOARD) AND EXTERIOR (SHEATHING AND AIR BARRIER) FACES.
- UNLESS THIS PROJECT IS BEING BID, THE INTENT OF THESE DRAWINGS IS TO BE PART OF A "DESIGN BUILD" PROJECT. ALTHOUGH THE ARCHITECT HAS ATTEMPTED TO SHOW ALL CONSTRUCTION, THE ARCHITECT AND CONTRACTOR ARE TO COORDINATE ANY AREAS NOT NOTED ON THESE DRAWINGS. ANY ADDITIONAL INFORMATION REQUIRED WILL BE PROVIDED DURING CONSTRUCTION.

PROJECT NO.: 21165

DRAWING LOG

ISSUE DATE: 08 OCT 2021

INDEX TO DRAWINGS

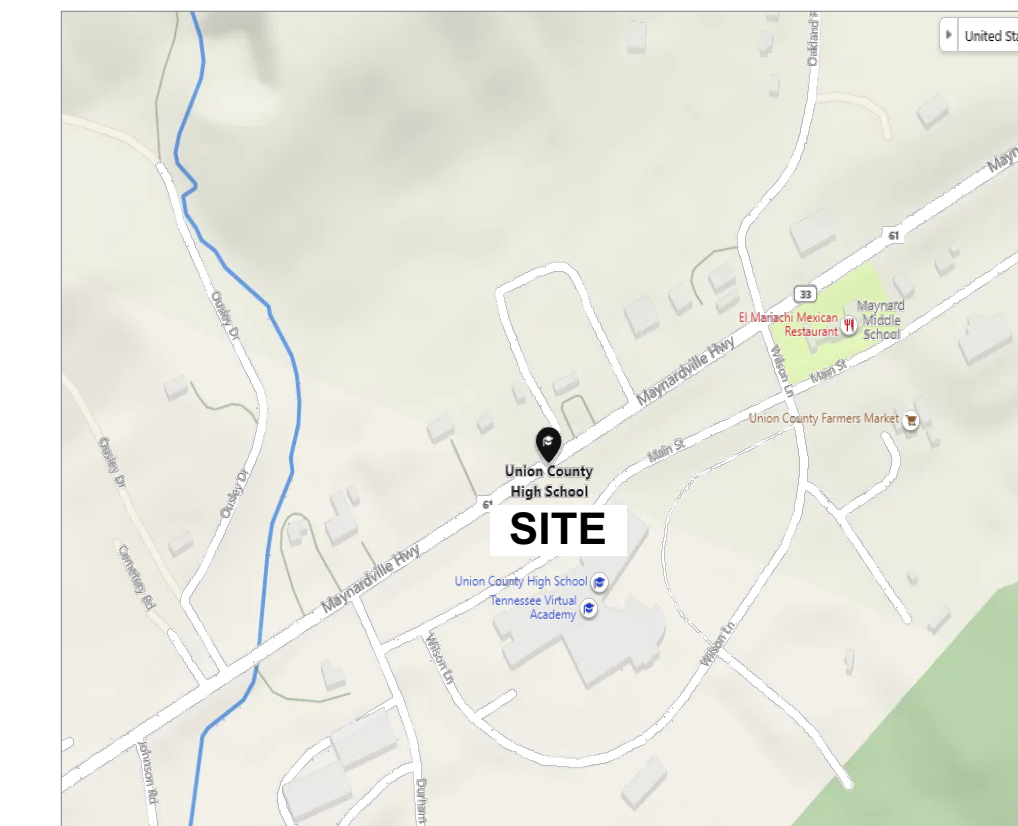
COVER SHEET	GENERAL NOTES & PLANS REVIEW DATA
ARCHITECTURAL	AS ARCHITECTURAL SPECIFICATIONS AD ACCESSIBLE DESIGN STANDARDS A1.1 FLOOR, LIFE SAFETY, AND CEILING PLANS, SCHEDULES, AND DETAILS
FIRE PROTECTION	FP1.1 FLOOR PLAN - FIRE PROTECTION
MECHANICAL	M1.1 FLOOR PLAN - HVAC
ELECTRICAL	E1.1 PARTIAL SECOND FLOOR PLANS - ELECTRICAL E1.2 LEGENDS AND SCHEDULES

CONSULTANTS

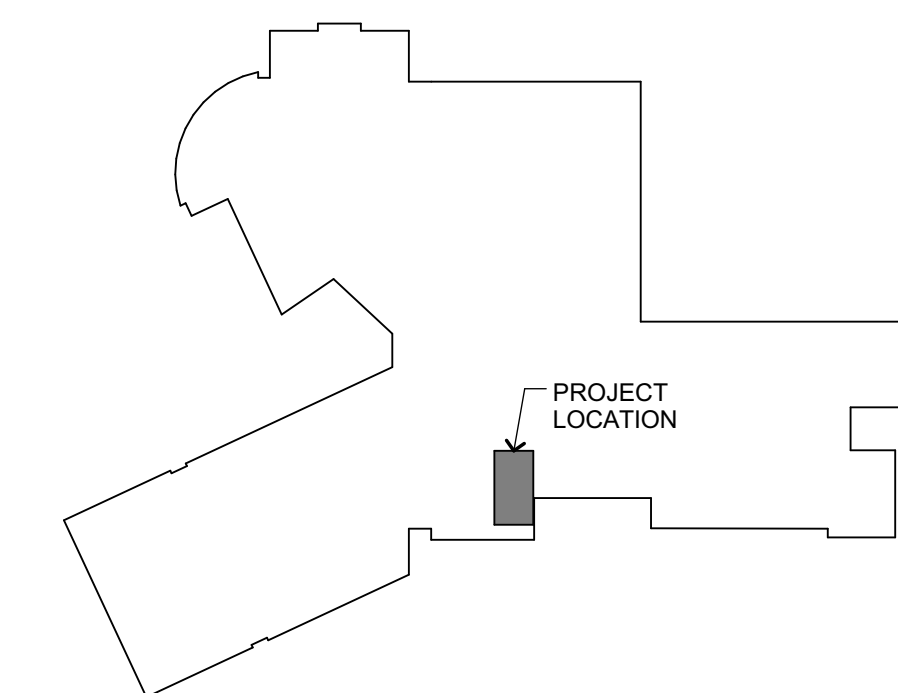
MECHANICAL ENGINEER
ALBERT BEDINGER CONSULTING ENGINEERS
5641 MERCHANTS CENTER BLVD., SUITE A104
KNOXVILLE, TN 37912
(865) 637-8339

ELECTRICAL ENGINEER
VREELAND ENGINEERS
3107 SUTHERLAND AVE.
KNOXVILLE, TN 37919
(865) 637-4451

LOCATION MAP



KEY PLAN



PLAN DATE
12.9.21



**GEORGE
ARMOUR
EWART
ARCHITECT**

404 Bearden Park Circle
Knoxville, TN 37919
865.602.7771
Fax 865.602.7742
www.georgeewart.com



PROJECT NO.: 21165
ISSUE DATE: 08 OCT 2021
SET #:

- PLAN LEGEND**
- NEW PARTITION. SEE 7/A1.1
 - EX. PARTITION TO REMAIN
 - NEW DOOR
 - EX. DOOR
 - FIRE EXTINGUISHER CABINET - SEE 6/A3.1 FOR FIRE EXTINGUISHER DETAIL
- NOTE:
(E) EDUCATIONAL, BUSINESS ACCESSORY OCCUPANCY
LOAD: 814 SQFT/100 = 9 OCCUPANTS

- CEILING LEGEND:**
- NOTES:
1) ALL CEILING HEIGHTS TO BE 9'-0" A.F.F. UNLESS NOTED OTHERWISE ON CEILING PLAN.
2) ALL SOFFITS TO BE 8'-6" AFF U.N.O.
3) SUSPENDED ACOUSTICAL TILE SYSTEM AND INSTALLATION SHALL COMPLY WITH SEISMIC DESIGN CATEGORY 'D', ASTM C 635, ASTM 636.

- NO WORK IN THIS AREA
- 2x2 ACOUSTICAL TILE SYSTEM
- LAY-IN LIGHT FIXTURE - SEE ELEC.
- SUPPLY - SEE MECH.
- RETURN OR EXHAUST - SEE MECH.
- EXIT LIGHTS - SEE ELEC.

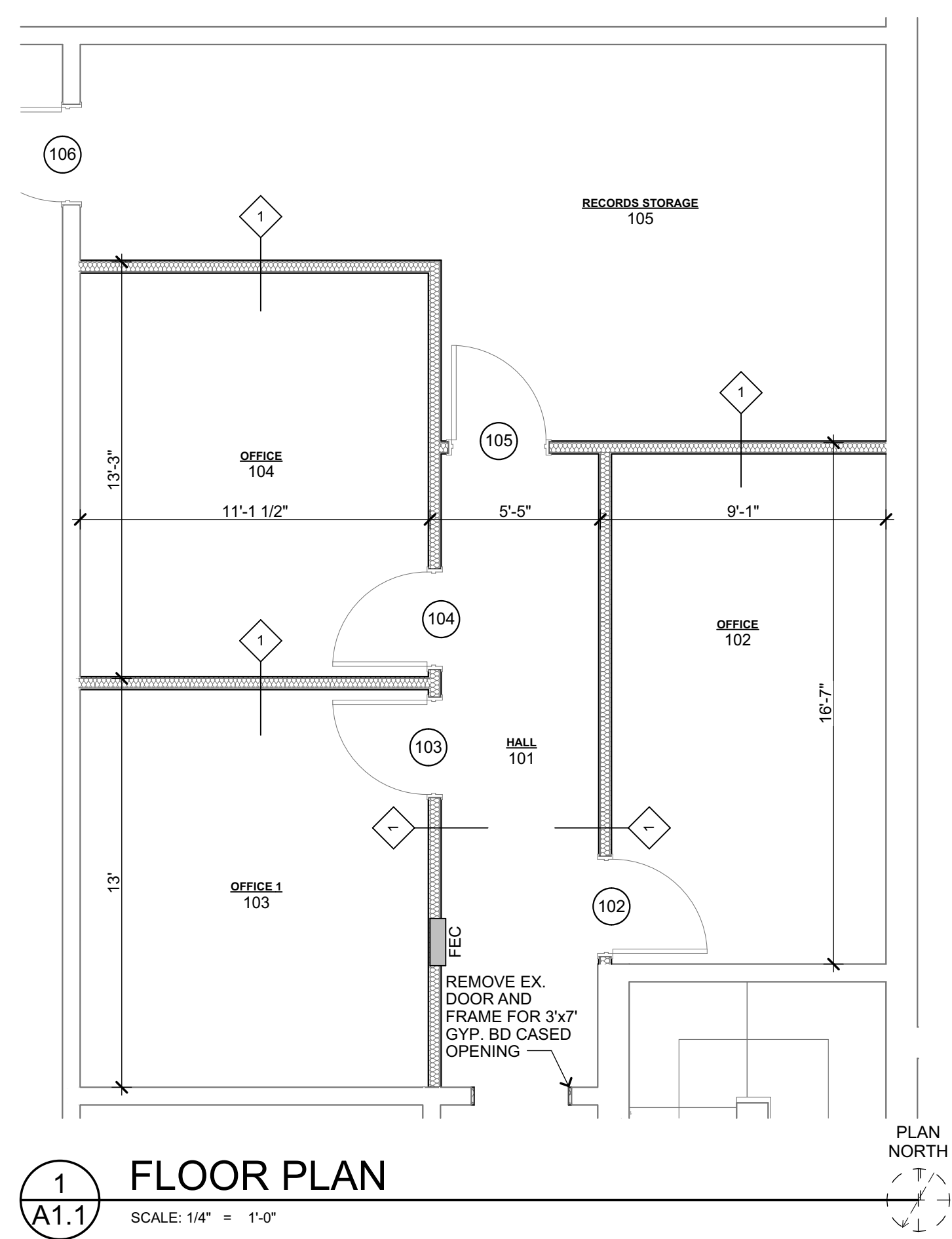
- LIFE SAFETY LEGEND:**
- TRAVEL DISTANCE
 - FIRE EXTINGUISHER CABINET - SEE 6/A3.1 FOR FIRE EXTINGUISHER DETAIL
 - EXIT LIGHTS - SEE ELEC.

- PARTITION NOTES:**
- ALL WALLS ARE TO BE CONSTRUCTED IN STRICT CONFORMANCE WITH REFERENCE TEST DESIGNS FOR FIRE AND SOUND RATING. REFER TO LAB DESIGN DATA FOR ADDITIONAL INFO INCLUDING FASTENING, JOINT FINISHING, ETC.
 - ALL PENETRATIONS OF ANY LAYER OF FIRE AND SOUND RATED PARTITIONS ARE TO BE SEALED AT THE PERIMETER WITH APPROVED MATERIALS. THROUGH PENETRATIONS ARE TO BE SEALED IN ACCORDANCE WITH APPROPRIATE UL DESIGN AS LISTED IN UL DESIGN RESISTANCE DIRECTORY. CONTRACTOR SHALL SUBMIT THE DESIGN NO. TO ARCHITECT FOR APPROVAL OF EACH TYPE/SYSTEM DESIGN.
 - ALL FIRE RATED PARTITIONS ARE TO BE EXTENDED TO AND BE SEALED AT STRUCTURAL DECK ABOVE AND ARE TO HAVE GYPSUM BOARD INSTALLED CONTINUOUS AND INTERRUPTED AT INTERSECTING PARTITIONS AND TO FACE OF MASONRY WHERE CONTIGUOUS. SEAL AT MASONRY.
 - ALL FIRE RATED WALLS ARE TO BE PROVIDED WITH PAINTED STENCILING OR SIGNS ABOVE THE CEILING AS APPROVED BY GOVERNING CODE OFFICIALS STATING "FIRE AND SMOKE BARRIER - PROTECT ALL OPENINGS."
 - PROVIDE WOOD BLOCKING IN WALLS FOR SUPPORT OF CABINETS, EQUIP., RAILINGS, ACCESSORIES, CURTAIN TRACKS, RECESSED ITEMS, ETC. AS REQUIRED. VERIFY LOCATION OF EQUIP. WITH ARCH. PRIOR TO INSTALLATION. HANDRAILS, GRAB BARS AND WALL-MOUNTED TOILET FIXTURES ARE TO BE INSTALLED TO WITHSTAND A MIN. VERT. OR HORIZ. FORCE OF 250 POUNDS.

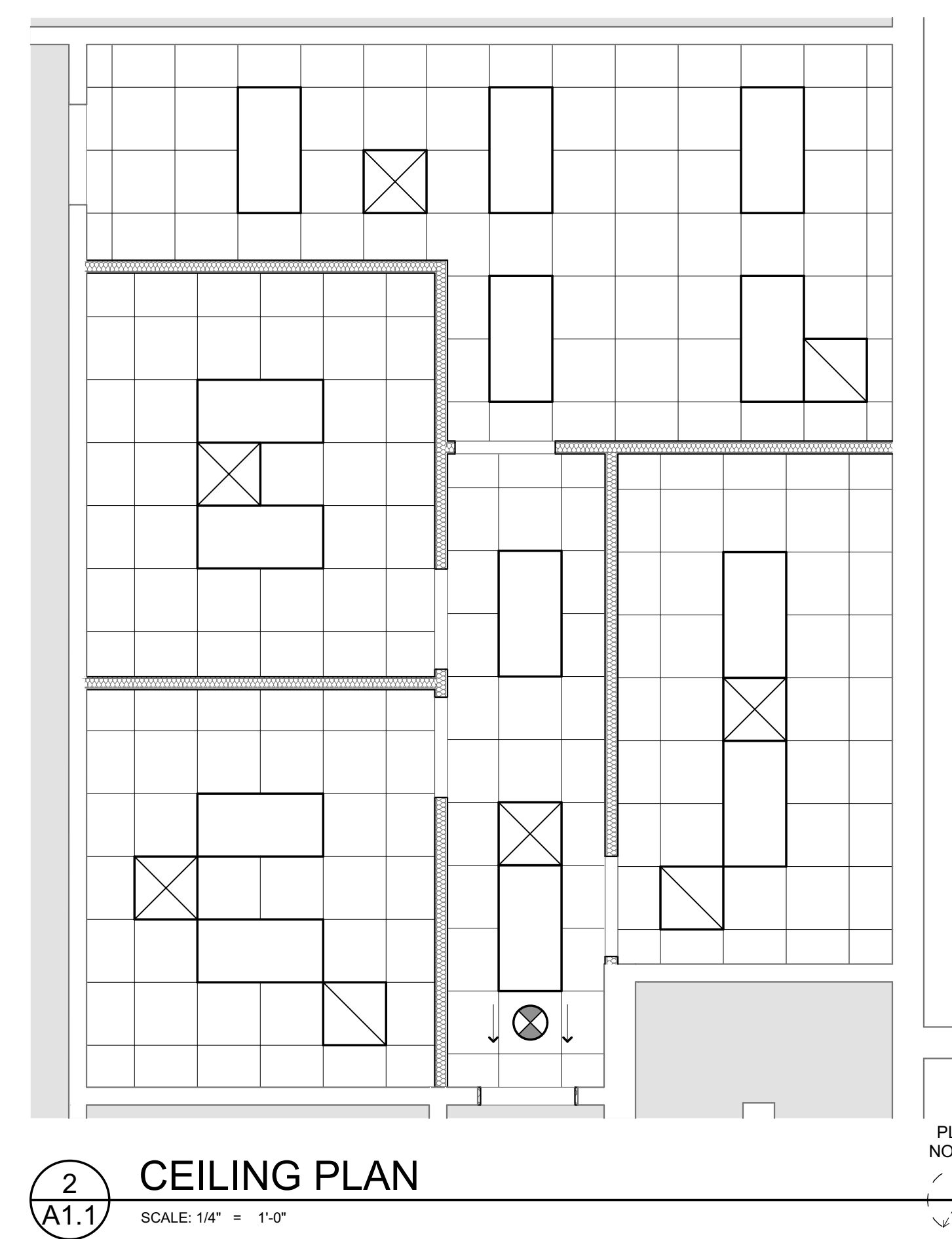
- FIRE EXTINGUISHER NOTE:**
G.C. TO PROVIDE EXTINGUISHERS AS REQ'D BY LOCAL FIRE MARSHALL & VERIFY TYPE, #, AND LOCATION PRIOR TO INSTALLATION.

- FLOOR PLAN NOTES:**
- FURNITURE PLACEMENT SHALL NOT RESTRICT ADA ACCESS REQUIRED.
 - CONTRACTOR TO PROVIDE MIN. R-38 BATT INSULATION AT ENTIRE DECK SPACE IF NOT CURRENTLY INSTALLED.
 - CONTRACTOR TO PROVIDE MIN. R-20 BATT INSULATION IN ALL FRAMED EXTERIOR WALLS IF NOT ALREADY PROVIDED.
 - TENANT TO PROVIDE BLINDS FOR SUN CONTROL TO ALL WINDOWS TO EXTERIOR.
 - ROOF PENETRATIONS AND ROOF WORK TO BE PERFORMED BY LANDLORD'S CONTRACTOR IF REQUIRED. VERIFY WITH LANDLORD.

- PARTITION LEGEND:**
- NOTES:
1) REFER TO SHEET A3.1 FOR PARTITION DETAILS.
2) UNLESS NOTED OTHERWISE, ALL PARTITIONS ARE TYPE '1' - CONTACT ARCHITECT FOR CLARIFICATION IF REQUIRED.



1 FLOOR PLAN
SCALE: 1/4" = 1'-0"



2 CEILING PLAN
SCALE: 1/4" = 1'-0"

DOOR SCHEDULE

MARK	SIZE			FIRE	TYPE	MAT'L	FRAME			HDWR SET	REMARKS
	W	H	T				MAT'L	HEAD	JAMB		
102	3'	7'	1 3/4"	Unrated	D1	HM	HM	H1	J1	OFFICE	
103	3'	7'	1 3/4"	Unrated	D1	HM	HM	H1	J1	OFFICE	
104	3'	7'	1 3/4"	Unrated	D1	HM	HM	H1	J1	OFFICE	
105	3'	7'	1 3/4"	Unrated	D1	HM	HM	H1	J1	STORAGE	
106	3'	7'	1 3/4"	Unrated	D1	HM	HM	H1	J1	STORAGE	

- DOOR NOTES:**
- CAULK BOTH SIDES OF ALL DOOR FRAMES.
 - PROVIDE DBL. STUDS AND BASE ANCHORS AT ALL JAMBS, TYP.
 - HARDWARE ON DOORS SHALL BE LEVER TYPE FOR HANDICAP ACCESSIBILITY
 - CONTRACTOR SHALL VERIFY ALL HARDWARE SETS W/ OWNER PRIOR TO INSTALLATION.
 - THRESHOLDS AT ALL EXT. DOORS SHALL BE MAX. 1/2" HIGH.
 - REFER TO SHEET AS FOR OTHER REQUIREMENTS AND SPECIFICATIONS.
 - PROVIDE COAT HANGERS ON DOORS IN TOILETS.

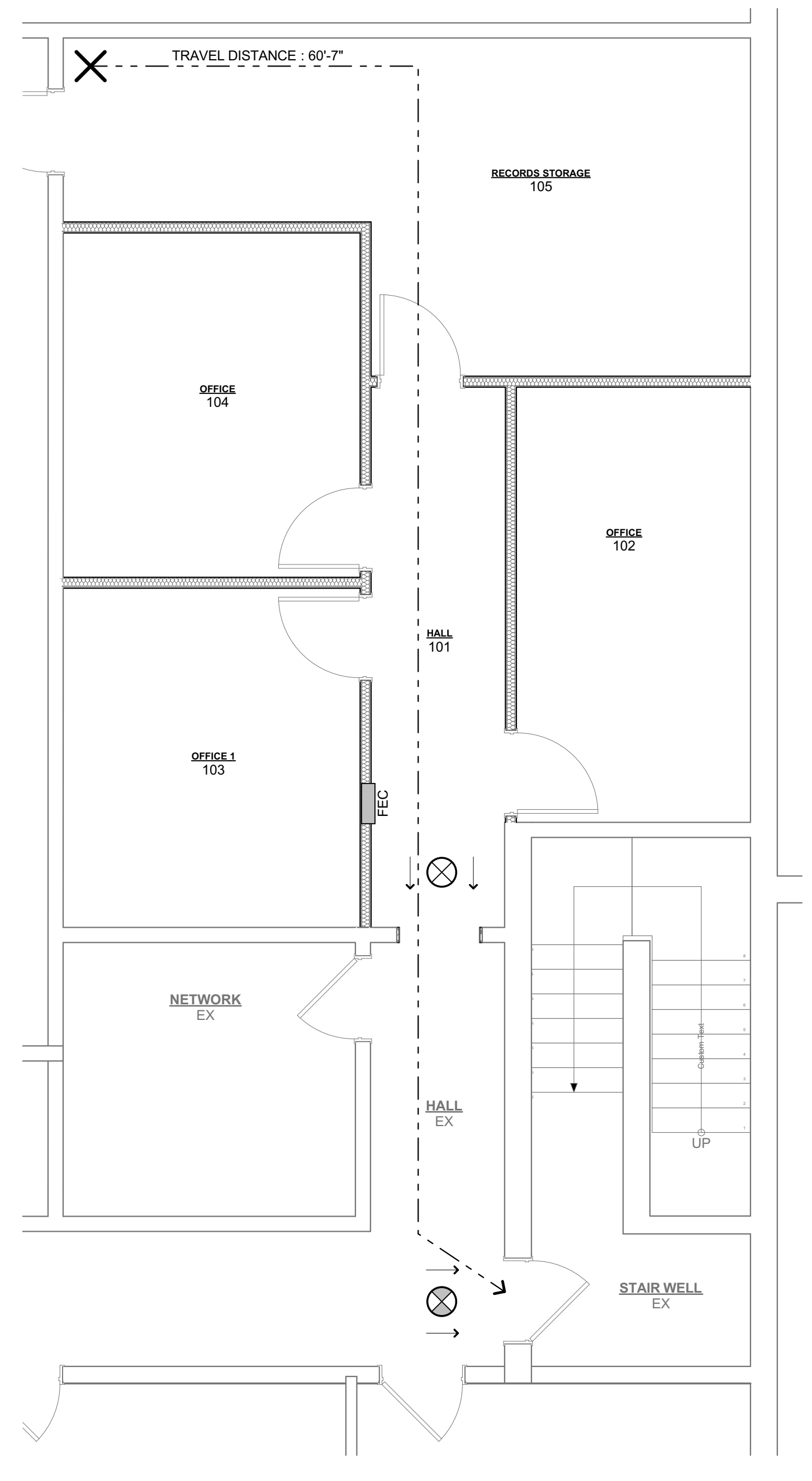
FINISH SCHEDULE

NO.	ROOM NAME	FLOOR	BASE	WALLS	CEILING	REMARKS
101	HALL	LVT*	VINYL	PAINT	ACT	*MATCH EX. HALLWAY
102	OFFICE	EX.	VINYL	PAINT	ACT	
103	OFFICE	EX.	VINYL	PAINT	ACT	
104	OFFICE	EX.	VINYL	PAINT	ACT	
105	RECORDS STORAGE	EX.	VINYL	PAINT	ACT	

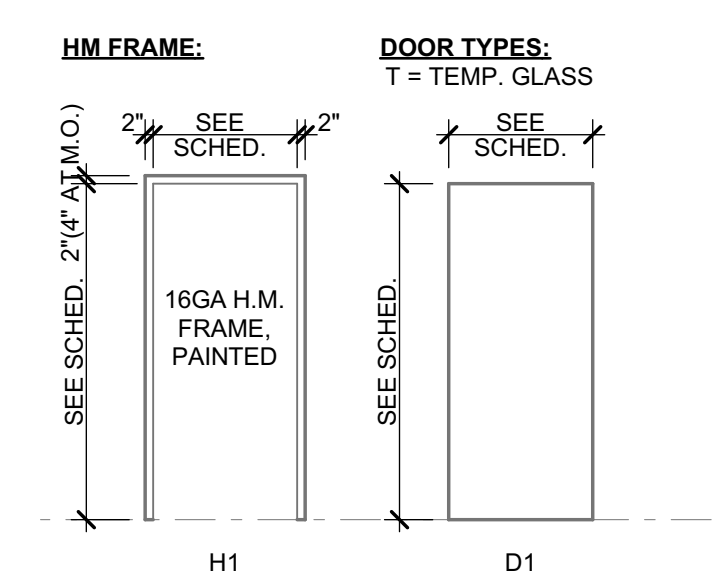
- FINISH NOTES:**
- ALL INTERIOR FINISHES SHALL COMPLY WITH CHAPTER 8 OF THE INTERNATIONAL BLDG. CODE, 2018 EDITION.
 - ALL FINISHES TO BE VERIFIED WITH TENANT PRIOR TO INSTALLATION
 - SEE REFLECTED CEILING PLAN, SHEET A4 FOR GYP. BD. SOFFIT AREAS AND HEADERS, AND ALL CEILING HEIGHTS.
 - PREPARE ALL FLOOR SURFACES AS REQ'D TO RECEIVE FLOORING MATERIAL - PATCH AND LEVEL ALL OPENINGS, DEPRESSIONS, ROUGHNESS, ETC..
 - PROVIDE NECESSARY TRANSITIONS FOR ALL FLOORING CHANGES. VERIFY COLOR & SELECTION WITH ARCHITECT.
 - USE MANUFACTURER ADHESIVE TO MAINTAIN MANUFACTURER WARRANTY.
 - PATCHALL FINISHES WHERE DISTURBED BY THE WORK OF ANY SUB CONTRACTOR.
 - INTERIOR WALL FINISH, CEILING FINISHES SHALL BE CLASS 'A', FLOORING SHALL BE CLASS 1.
 - REFER TO ARCH. SPECIFICATIONS SHEET AS FOR ALL OTHER INFORMATION.
 - PAINT FINISH FOR WALLS TO BE EGGSHELL.
 - TRIM PAINT TO BE SEMI-GLOSS FINISH AND MATCH COLOR TO WALL BASE. VERIFY WITH ARCHITECT.
 - DOOR STAIN TO BE VERIFIED WITH ARCHITECT.
 - PROVIDE SUBMITTALS FOR REVIEW FOR FLOORING, BASE AND WALL FINISHES, CAPS & TRIMS.
 - PER SPEC BOOK PROVIDE PAINT SAMPLES IN FIELD. VERIFY FINAL COLORS PRIOR W/ DESIGNER.
 - VERIFY ALL DIMENSIONS IN FIELD.

WALL LEGEND

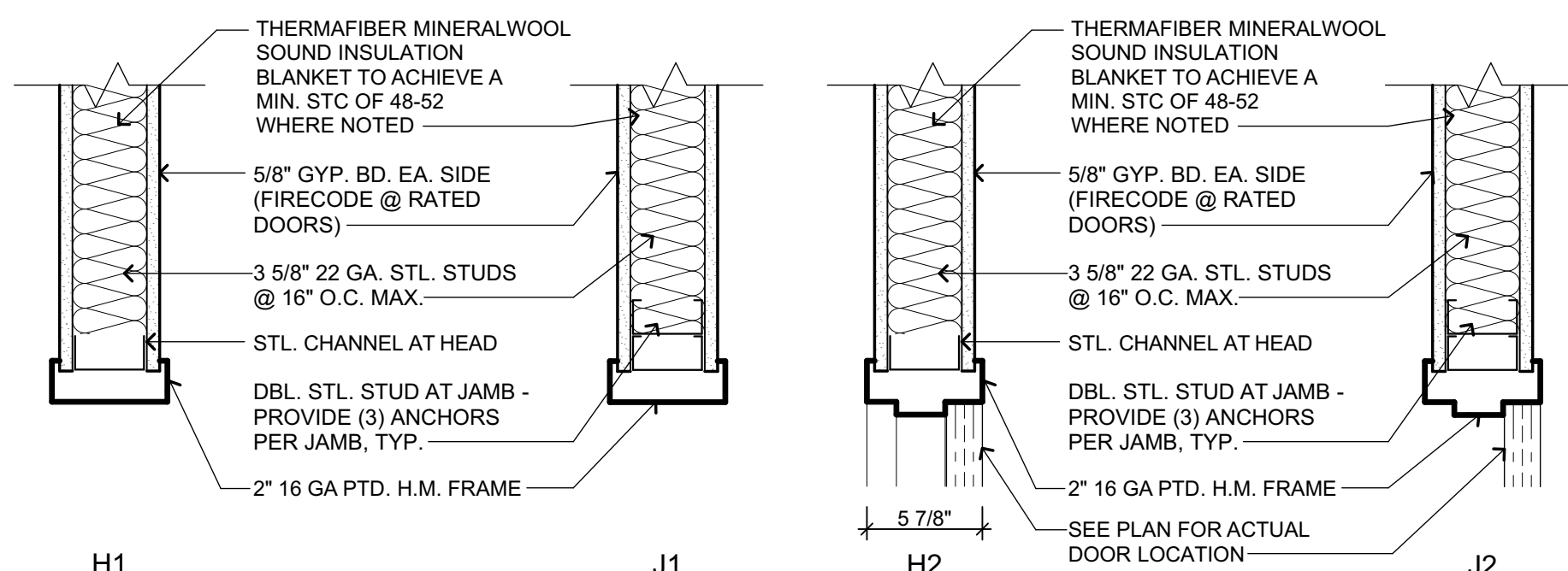
WALL ID	WALL TYPE	DESCRIPTION
1		3-5/8" STL STUD w/ 5/8" GYP BD EACH SIDE - SOUND ATT BLANKET



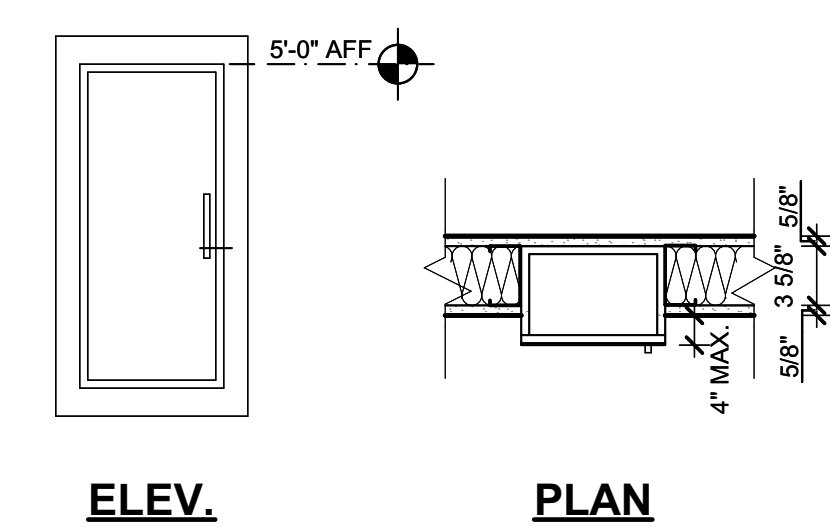
3 LIFE SAFETY PLAN
SCALE: 1/4" = 1'-0"



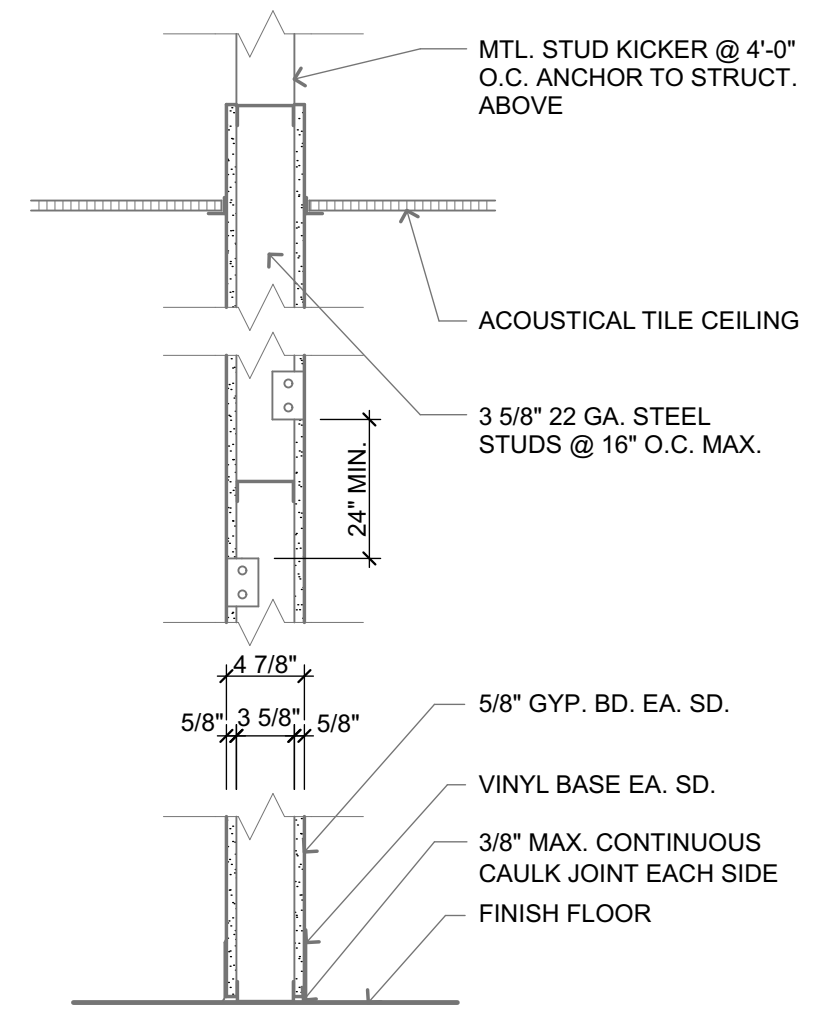
4 FRAME & DOOR TYPES
SCALE: 1/4" = 1'-0"



5 HEAD AND JAMB DETAILS
SCALE: 1 1/2" = 1'-0"



6 FIRE EXTINGUISHER CABINET DETAIL
SCALE: 1" = 1'-0"



7 PARTITION TYPES
SCALE: 1" = 1'-0"

GEORGE ARMOUR EWART ARCHITECT
404 Bearden Park Circle
Knoxville, TN 37919
865.602.7771
Fax 865.602.7742
www.georgeewart.com

OFFICE INTERIOR RENOVATION
FOR
UNION COUNTY HIGH SCHOOL
150 MAIN ST
UNION COUNTY, TENNESSEE



FLOOR, LIFE SAFETY, AND CEILING PLANS, SCHEDULES, AND DETAILS

DATE: 08 OCT 2021
PROJECT NO.: 21165
PROJECT MGR.: JGS

A1.1

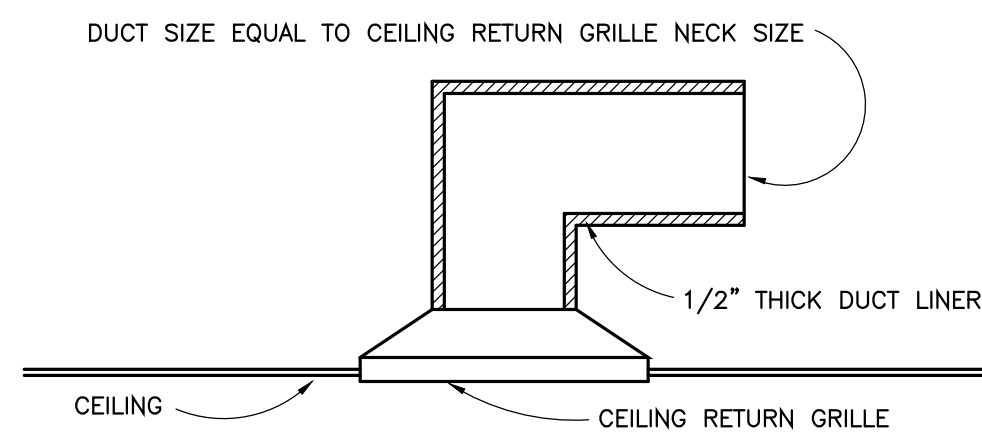
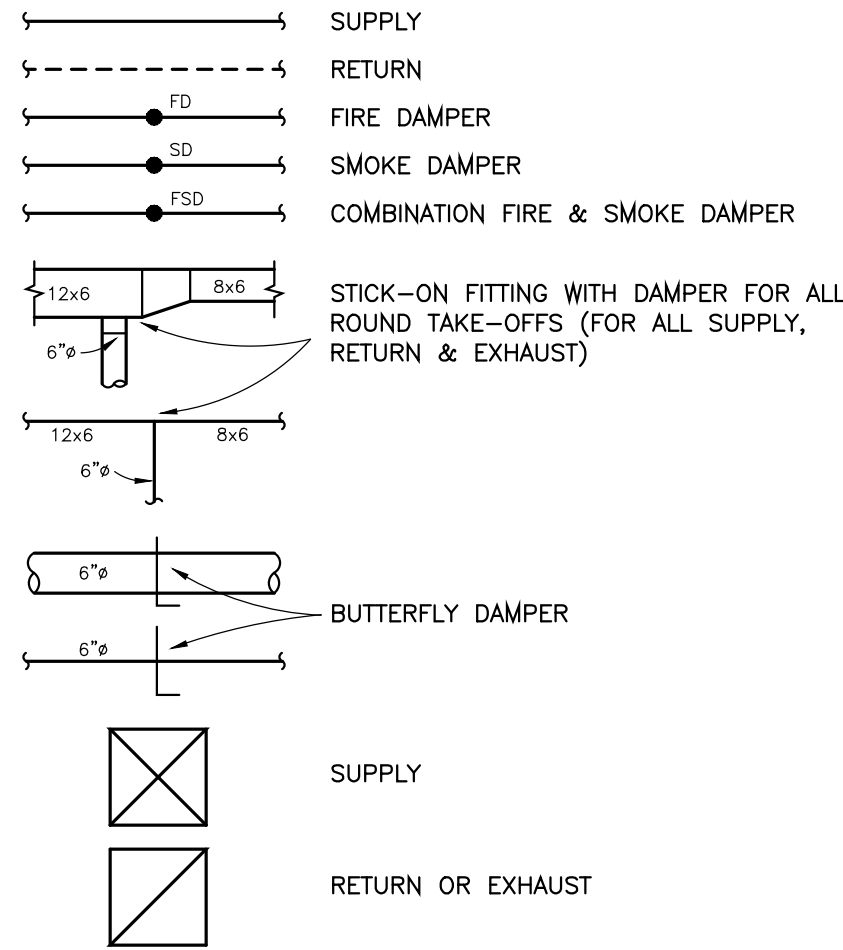
HVAC SPECIFICATIONS

- FURNISH ALL LABOR, MATERIALS AND EQUIPMENT REQUIRED TO INSTALL A COMPLETE HEATING AND COOLING SYSTEM AS INDICATED AND SPECIFIED ON THE DRAWINGS.
- WORK SHALL COMPLY WITH IMC, NFPA, ALL APPLICABLE LAWS, ORDINANCES & CODES OF THE STATE OF TENNESSEE, LOCAL AUTHORITIES HAVING JURISDICTION AND WITH APPLICABLE RULES & REGULATIONS.
- OBTAIN ALL PERMITS & INSPECTIONS REQUIRED FOR THE COMPLETION OF THE WORK & PAY ALL FEES & COSTS IN CONNECTION THEREWITH.
- THE MECHANICAL DRAWINGS ARE GENERALLY DIAGRAMMATIC AND UNLESS SPECIFICALLY DIMENSIONED, THE LOCATIONS OF DUCTWORK AND EQUIPMENT AND THE ROUTING OF DUCTWORK IS APPROXIMATE ONLY AND SHALL NOT BE SCALED FROM THE MECHANICAL DRAWINGS.
- INSTALL ALL EQUIPMENT IN ACCORDANCE WITH MANUFACTURER'S INSTRUCTIONS.
- SUBMIT TO THE ARCHITECT FOR APPROVAL, 10 DAYS AFTER RECEIPT OF NOTICE TO PROCEED WITH THE WORK, A COMPLETE LIST OF MATERIALS, EQUIPMENT AND ACCESSORIES PROPOSED FOR USE, INCLUDING COMPLETE DESCRIPTIONS AND SPECIFICATIONS OF ANY PROPOSED SUBSTITUTIONS, MANUFACTURER'S SHOP DRAWINGS, ROUGHING-IN DRAWINGS, AND ANY OTHER INFORMATION REQUIRED FOR THE PROPER INSTALLATION OF THE WORK. SUBMITTALS SHALL BE IN PDF FORMAT (NO PAPER COPIES).
- ALL DUCTWORK SHALL BE GALVANIZED STEEL FABRICATED ACCORDING TO SMACNA DETAILS. DUCTS SHALL BE SIZE INDICATED ON DRAWINGS (NET INSIDE DIMENSIONS), RIGIDLY BRACED, ADEQUATELY SUPPORTED & SECURELY FASTENED IN PLACE.
- FLEXIBLE DUCT FOR INSULATED SYSTEMS SHALL BE THERMAFLEX M-KF, OR EQUAL, PRE-INSULATED DUCT WITH A MINIMUM R-VALUE OF 6.0. FLEXIBLE DUCT FOR NON-INSULATED DUCT SYSTEMS SHALL BE THERMAFLEX S-LD, OR EQUAL. ALL FLEXIBLE DUCT SHALL BE INSTALLED IN STRICT ACCORDANCE WITH MANUFACTURER'S RECOMMENDATIONS. DUCT RUNS SHALL BE AS STRAIGHT AS POSSIBLE AND LIMITED TO MAXIMUM OF 5 FEET IN LENGTH.
- INSTALL SINGLE WALL TURNING VANES AT RIGHT ANGLES AND SMALL RADIUS TURNS IN DUCTS. MAKE REDUCTIONS IN DUCT SIZE WITH TAPERED TRANSITION PIECES. TRANSITIONS FOR CONNECTIONS TO EQUIPMENT SHALL BE DESIGNED TO SUIT CONDITIONS AND SO THAT AIR FLOW IS NOT RESTRICTED.
- INSULATE ALL SHEET METAL SUPPLY AIR DUCTWORK WITH 2.2" THICK OWENS-CORNING ASW DUCTWRAP, THOROUGHLY TAPE ALL JOINTS AND SEAMS.
- GRILLES AND CEILING OUTLETS SHALL BE PRICE, OR EQUAL, STEEL CONSTRUCTION WITH ELECTRO-DEPOSITION PAINTED FINISH, SIZE SHOWN ON THE DRAWINGS AND SCHEDULED AS FOLLOWS.
 - CD CEILING DIFFUSER, PRICE MODEL SMD-3P SQUARE NECK, LOUVERED FACE DIFFUSER, LAY-IN TYPE, 4-WAY BLOW WITH RECTANGULAR OPPOSED BLADE DAMPER. FURNISH WITH SQUARE-TO-ROUND ADAPTER WHERE ROUND DUCT IS INDICATED ON DRAWINGS.
 - CR CEILING RETURN, PRICE MODEL 80D-TB EGG CRATE RETURN GRILLE, LAY-IN TYPE, 1/2" CUBES WITH OPPOSED BLADE DAMPER. FURNISH WITH SQUARE-TO-ROUND ADAPTER WHERE ROUND DUCT IS INDICATED ON DRAWINGS.
- WHEN THE INSTALLATION IS COMPLETE, IT SHALL BE RUN & ADJUSTED BY THE CONTRACTOR. ANY EXCESSIVE NOISE OR VIBRATION SHALL BE CORRECTED.
- SUBMIT WRITTEN AIR BALANCE REPORT TO THE ARCHITECT A MINIMUM OF 10 DAYS PRIOR TO THE FINAL INSPECTION. THE AIR BALANCE CONTRACTOR SHALL BE AABC OR NEBB CERTIFIED.
- THE CONTRACTOR SHALL INSTRUCT THE OWNER IN THE OPERATION OF EQUIPMENT & PROVIDE THE OWNER WITH A COMPLETE SET OF OPERATING INSTRUCTIONS FOR EQUIPMENT INSTALLED UNDER HIS CONTRACT.
- THE WORK SHALL BE GUARANTEED AGAINST ALL DEFECTIVE MATERIALS & EQUIPMENT FOR A PERIOD OF ONE YEAR AFTER ACCEPTANCE. THE CONTRACTOR SHALL MAKE ALL NECESSARY CORRECTIONS WITHOUT COST TO THE OWNER.

DUCT LEGEND

NOTES:

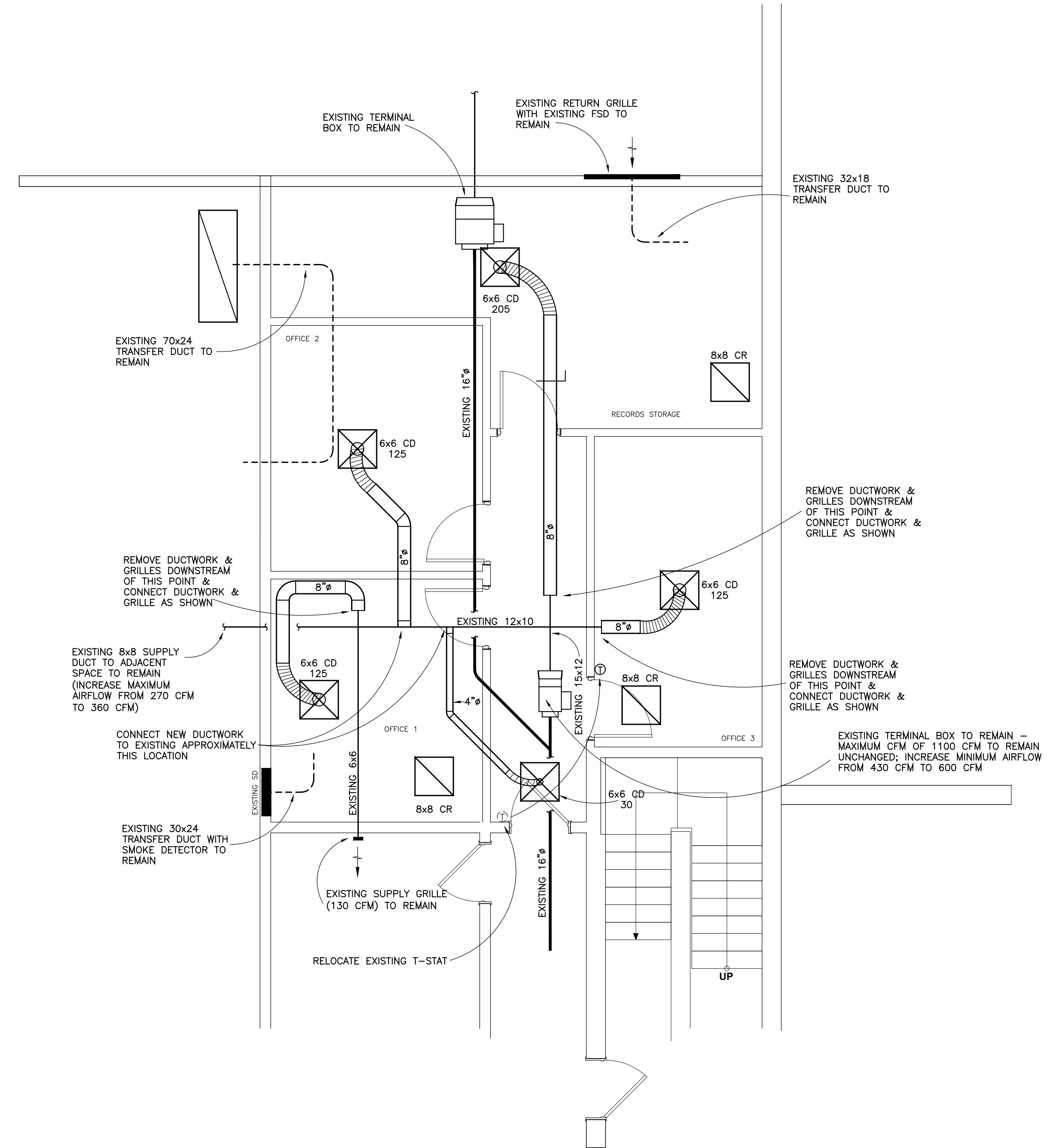
- (1) EXISTING DUCTWORK IS SHOWN SINGLE LINE; NEW DUCTWORK IS SHOWN DOUBLE LINE



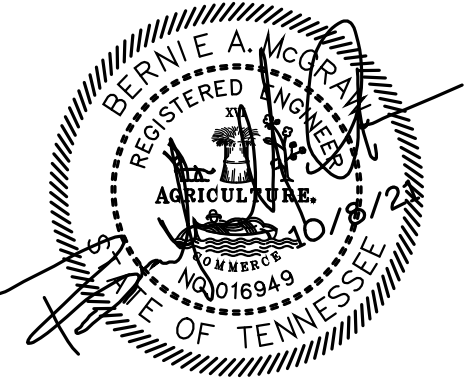
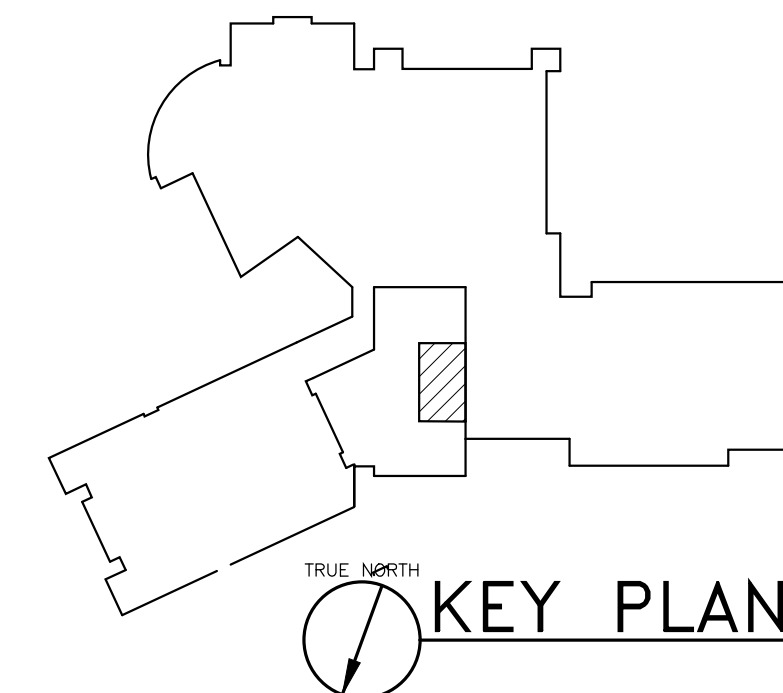
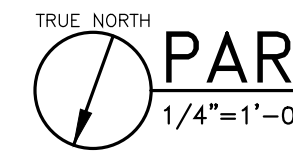
DETAIL - CEILING RETURN GRILLE

NTS

- NOTES:
(1) INSTALL SHEET METAL BOOT WITH LINER FOR ALL CEILING RETURN GRILLES



PARTIAL FLOOR PLAN - HVAC

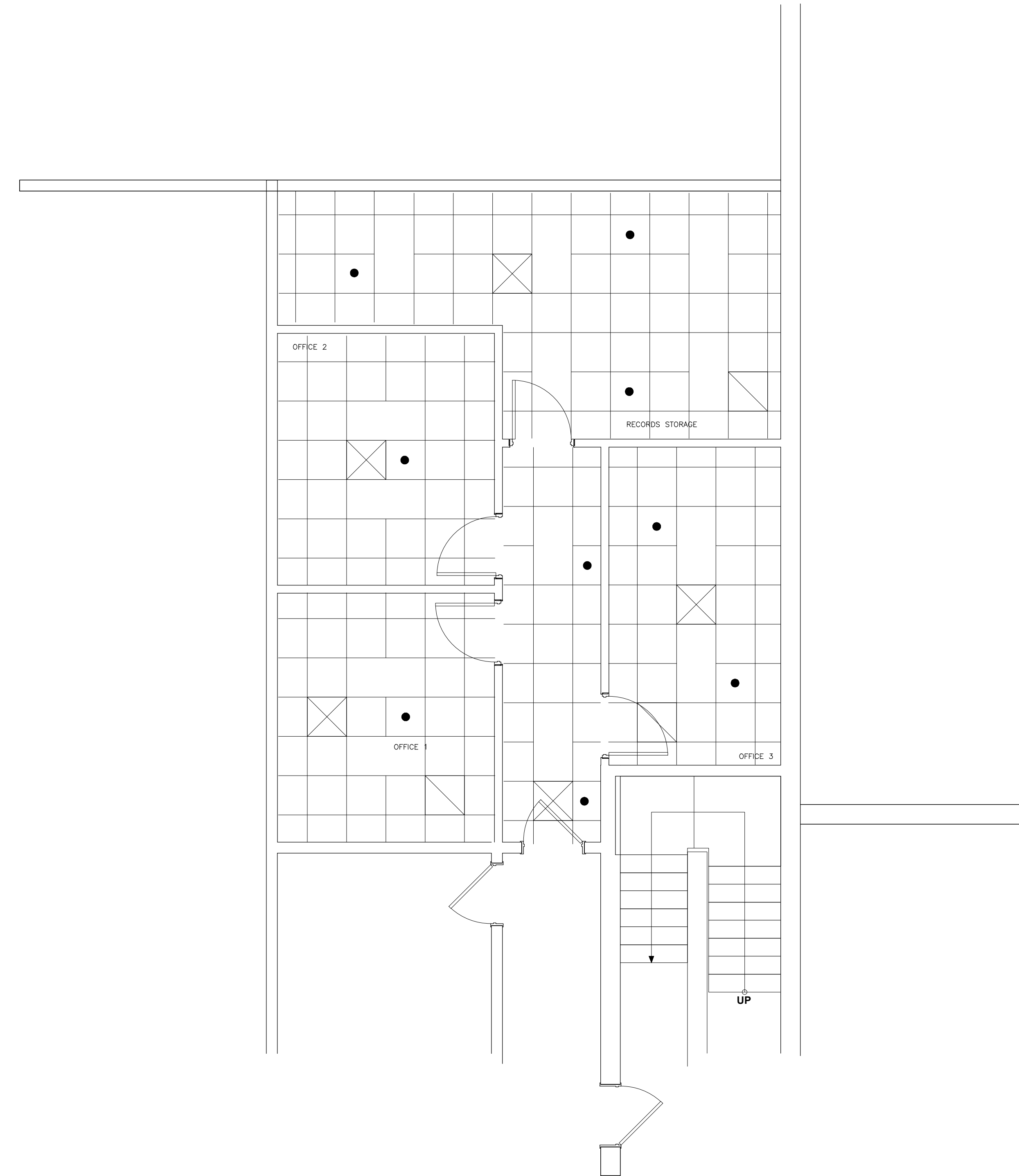


FIRE PROTECTION SPECIFICATIONS

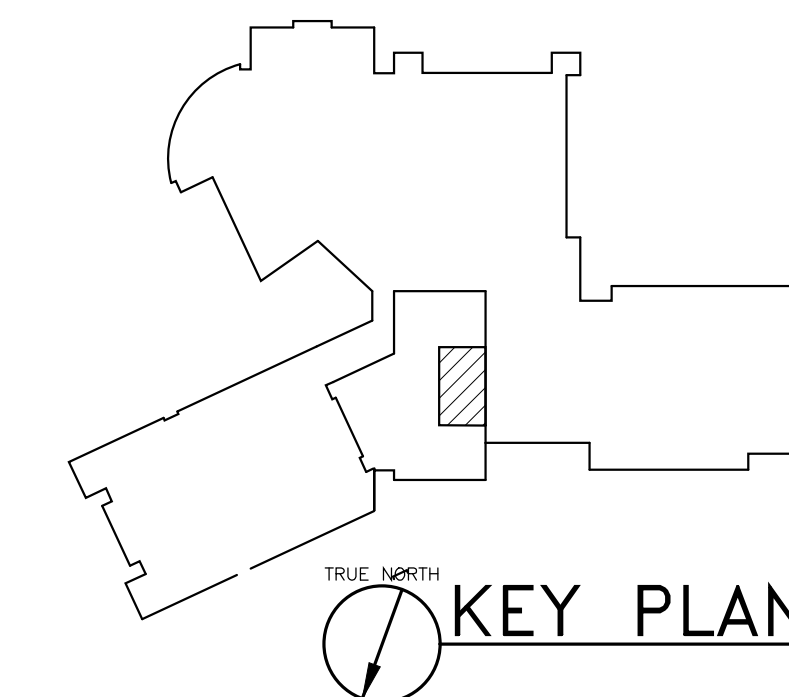
- FURNISH ALL LABOR, MATERIALS, TOOLS, EQUIPMENT, AND PERFORM ALL WORK AND SERVICES NECESSARY FOR OR INCIDENTAL TO THE MODIFICATION OF THE EXISTING SPRINKLER SYSTEM. ALL MATERIAL SHALL BE NEW, UNUSED, AND OF FIRST CLASS CONSTRUCTION, DESIGNED AND GUARANTEED TO PERFORM THE SERVICE REQUIRED. ALL WORK SHALL BE PERFORMED BY A LICENSED SPRINKLER CONTRACTOR.
- THE FIRE PROTECTION / FIRE DETECTION AND ALARM SYSTEMS SHALL USE UL LISTED MATERIALS AND EQUIPMENT, AND SHALL BE INSTALLED IN ACCORDANCE WITH MANUFACTURER'S SPECIFICATIONS AND NFPA 13.
- THE OCCUPANCY CLASSIFICATION IS LIGHT HAZARD.
- ALL INTERIOR PIPING ABOVE GROUND SHALL BE SCHEDULE 40 OR SCHEDULE 10 BLACK STEEL PIPE WITH 175 POUND C.I. OR VICTAULIC COUPLINGS, 2 INCHES AND LARGER, CONNECTIONS AROUND VALVES AND SERVICE CONNECTIONS MAY BE 175 POUND FLANGED, GROOVED END FITTINGS SHALL BE SHORT-PATTERN WITH FLOW EQUAL TO STANDARD PATTERN FITTINGS, VICTAULIC "FIRELOCK" OR VICTAULIC INSTALLATION READY FITTINGS. FITTINGS 2" AND LESS SHALL BE 175 POUND C.I. GROOVED JOINT COUPLINGS SHALL CONSIST OF TWO DUCTILE IRON HOUSING SEGMENTS, PRESSURE RESPONSIVE ELASTOMER GASKET AND ASTM A-449 ZINC-ELECTROPLATED STEEL BOLTS AND NUTS.
- IN LIEU OF THREADED 1" STEEL PIPING SYSTEMS, THE VICTAULIC FIRELOCK IGS SYSTEM WITH IR FITTINGS AND COUPLINGS FOR NPS 1 (DN 25) SCHEDULE 10 AND SCHEDULE 40 CARBON STEEL PIPE MAY BE USED.
- ALL SPRINKLER HEADS SHALL BE THE QUICK RESPONSE TYPE BE UL LISTED. ALL SPRINKLER HEADS SHALL BE OF TYPE AND OPERATING TEMPERATURE AS REQUIRED BY SPECIFIC LOCATIONS OF INSTALLATION. VICTAULIC FIRELOCK STYLE V9 COUPLING MAY BE USED TO JOIN 1/2", 3/4" AND 1" SPRINKLERS.
- ALL SPRINKLER HEADS LOCATED IN HORIZONTAL, FLAT CEILINGS IN FINISHED SPACES SHALL BE RECESSED, CHROME PENDANT TYPE HEADS. TWO PIECE ESCUTCHEONS SHALL BE USED.
- FLEXIBLE HOSE CONNECTIONS TO SPRINKLER HEADS MAY BE USED BUT SHALL BE EQUAL TO VICTAULIC AH2 HOSE WITH AB2/AH2CC BRACKET. IN LIEU OF RIGID CONNECTIONS TO DRY SPRINKLER HEADS, A VICTAULIC VICFLEX™ DRY SPRINKLER, MODEL VS1, MAY BE USED. THE SPRINKLER SHALL PROVIDE A VERTICAL OR HORIZONTAL FLEXIBLE CONNECTION WITH A BEND RADIUS TO 2", AND ALLOW FOR UP TO 4 BENDS. VACTAULIC AB6 BRACKET MAY BE USED.
- COORDINATE LOCATION OF ALL SPRINKLER HEADS WITH ARCHITECTURAL REFLECTED CEILING PLAN. HEADS SHALL BE CENTERED IN CEILING TILES. PROVIDE ADDITIONAL HEADS AS REQUIRED TO MAINTAIN SPRINKLER COVERAGE.
- THE SPRINKLER SYSTEM SHALL COMPLY WITH ALL CODES, REQUIREMENTS, REGULATIONS AND PROVISIONS OF THE LAW OF THE STATE OF TENNESSEE AND NFPA.
- SPARE HEADS OF EVERY TYPE USED ON THE PROJECT SHALL BE INCLUDED IN THE SPARE HEAD CABINET. A SPRINKLER WRENCH SPECIFICALLY ADAPTED TO REMOVAL AND REPLACEMENT OF EVERY TYPE OF HEAD USED ON THE PROJECT SHALL BE INCLUDED IN THE SPARE HEAD CABINET.
- WORK INCLUDED HEREIN SHALL INCLUDE ALL TESTS AND INSPECTIONS (IF REQUIRED) BY THE INSPECTING AGENCIES AND ANY PERMITS OR INSPECTION FEES CONNECTED THEREWITH. FOLLOWING ALL TESTING, THE SYSTEM SHALL BE RETURNED TO A FUNCTIONAL AND OPERATIONAL CONDITION AT NO EXTRA COST TO THE OWNER. AFTER APPROVAL, THE CONTRACTOR SHALL OBTAIN THE APPROVAL CERTIFICATES (IF REQUIRED) AND DELIVER THEM TO THE ARCHITECT.
- THESE DRAWINGS ARE FOR CONCEPT ONLY, THEY ARE NOT INTENDED TO BE USED FOR TAKE-OFF, ACTUAL HEAD NUMBERS OR ACTUAL DESIGN USE. THE SPRINKLER CONTRACTOR SHALL BE RESPONSIBLE FOR PROVIDING A COMPLETE WORKING SYSTEM COMPLETE WITH ALL WORKING PARTS IN ACCORDANCE WITH ALL APPLICABLE CODES. PROVIDE ANY ADDITIONAL HEADS REQUIRED DUE TO BLIND OR SHADED AREAS AT NO ADDITIONAL COST.

SPRINKLER LEGEND

SYMBOL	GENERAL DESCRIPTION	K FACTOR	TYPE	VICTAULIC MODEL	TEMPERATURE RATING (°F)
●	RECESSED PENDENT	5.6	QUICK RESPONSE	V2708	155

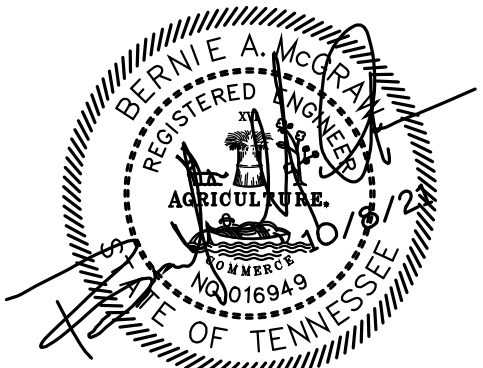


TRUE NORTH
1/4"=1'-0"
PARTIAL FLOOR PLAN – FIRE PROTECTION



**GEORGE
ARMOUR
EWART
ARCHITECT**

404 Bearden Park Circle
Knoxville, TN 37919
865.602.7771
Fax 865.602.7742
www.georgeewart.com



**FIRE ALARM UPGRADES FOR
UNION COUNTY HIGH
SCHOOL**
150 Main Street
Union County, Tennessee

**FLOOR PLAN - FIRE
PROTECTION**



5641 MERCHANTS CENTER BLVD, STE. A104
KNOXVILLE, TENNESSEE 37912
T 865.637.8339 • F 865.523.8186
BCE1946.COM

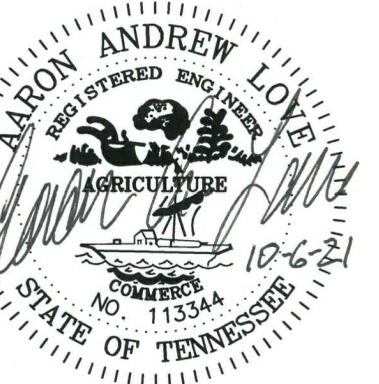
DATE: 8 OCT 2021
PROJECT NO.: 21165
PROJECT MGR.: G-TT

FP1.1

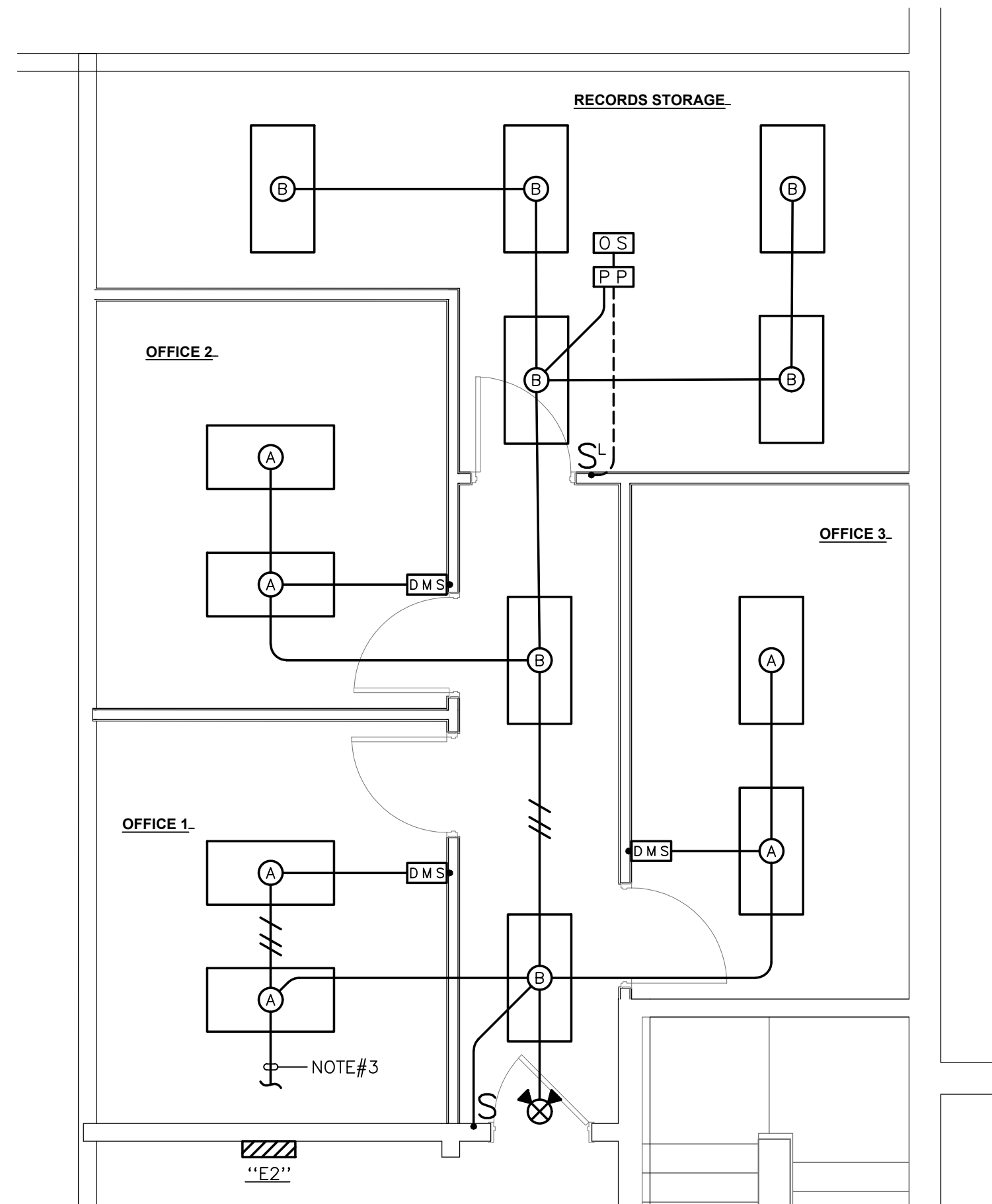


**GEORGE
ARMOUR
EWART
ARCHITECT**

404 Bearden Park Circle
Knoxville, TN 37919
865.602.7771
Fax 865.602.7742
www.georgeewart.com



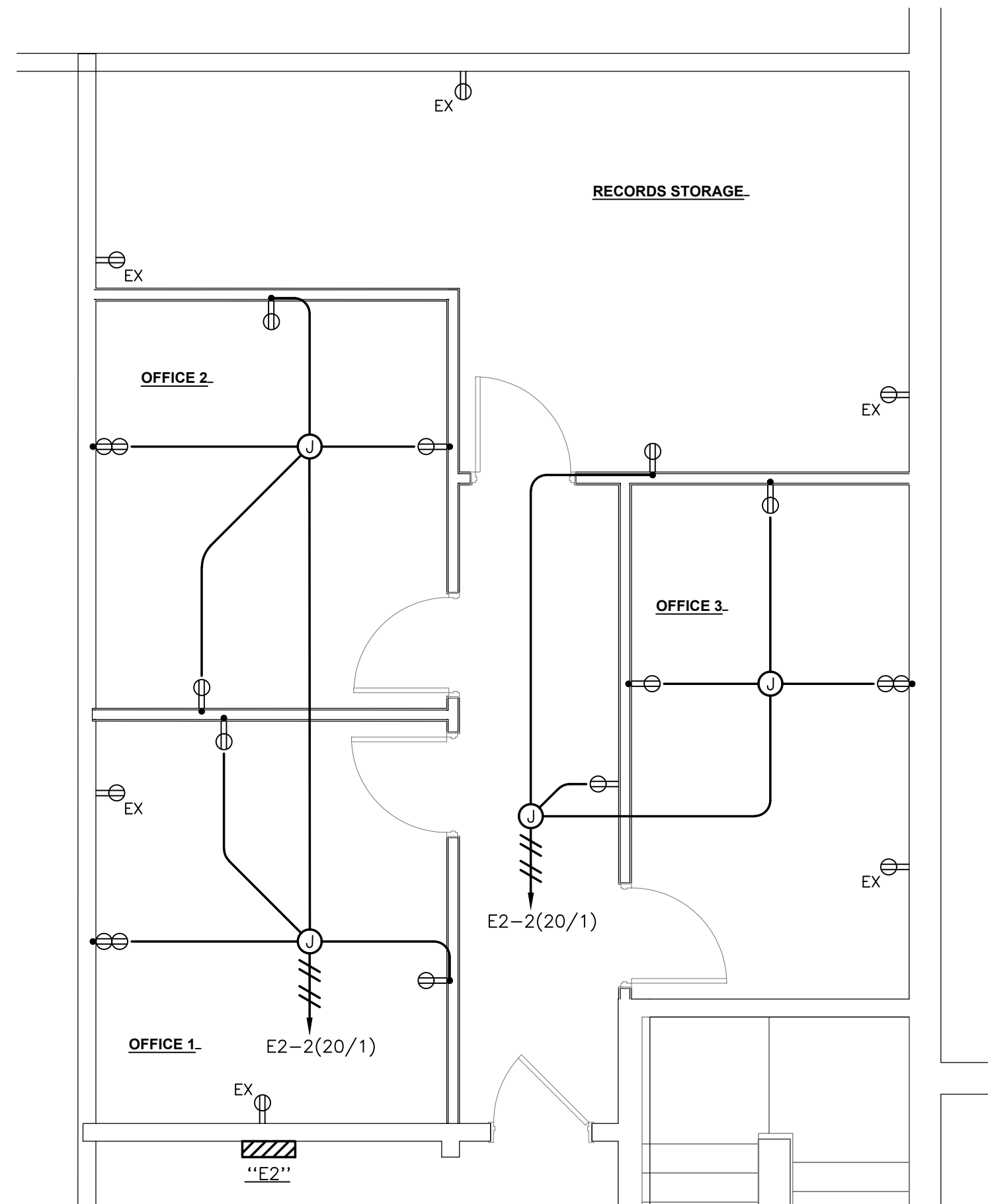
SECOND FLOOR RENOVATION FOR
**UNION COUNTY HIGH
SCHOOL**
150 Main Street
Union County, Tennessee



**PARTIAL SECOND
FLOOR PLAN - LIGHTING**

SCALE: 1/4" = 1'-0"
0' 2' 4' 8'

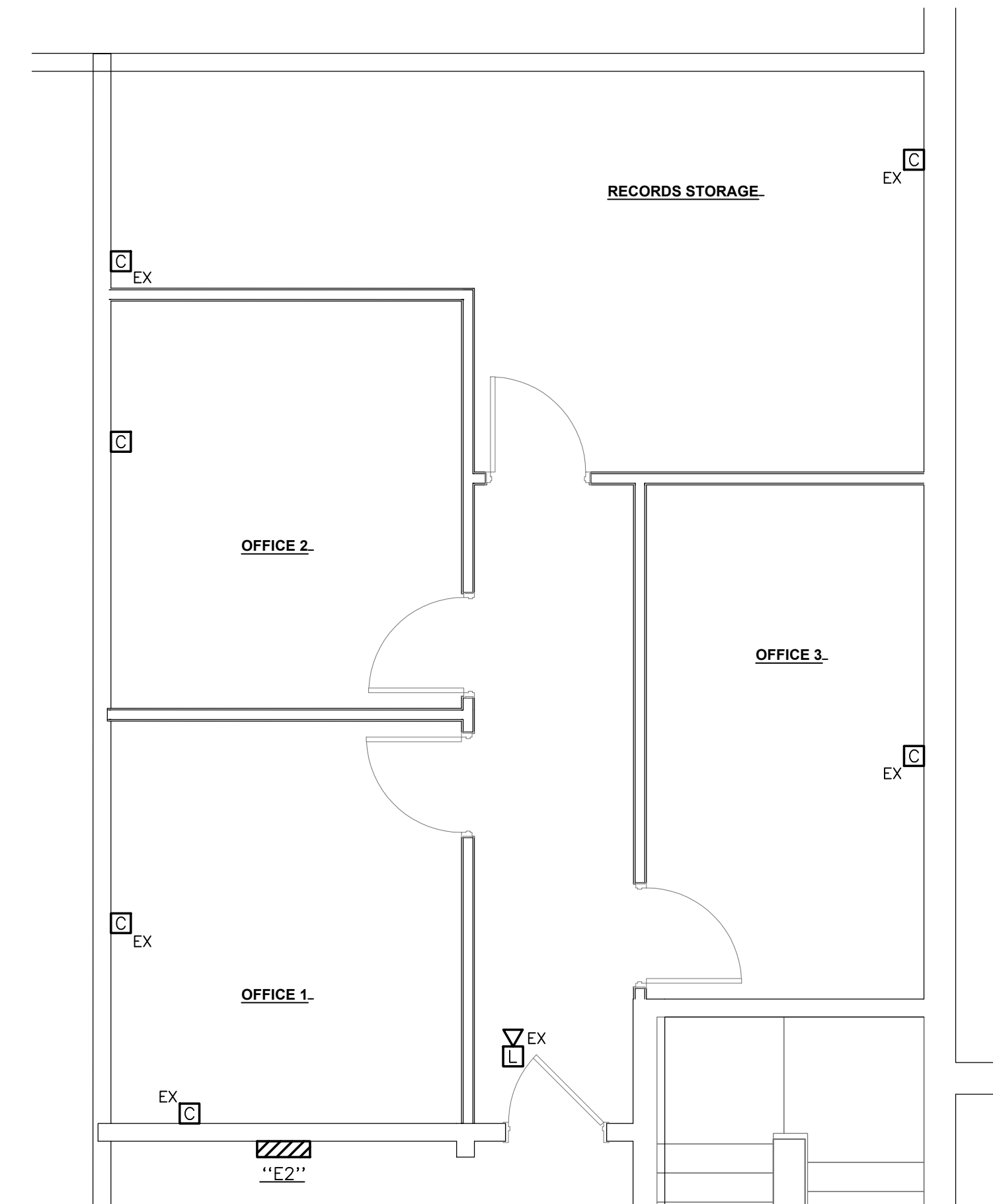
- LIGHTING NOTES:**
1. REFER TO ARCHITECTURAL REFLECTED CEILING PLAN FOR EXACT LOCATIONS OF ALL LIGHTING FIXTURES.
 2. EXIT SIGNS, BUILT-IN BATTERY PACKS AND EXTERIOR EMERGENCY LIGHTS SHALL BE CONNECTED TO LOCAL UNSWITCHED LIGHTING CIRCUITS AS INDICATED ON DRAWINGS.
 3. CONNECT TO EXISTING LIGHTING CIRCUIT SERVING AREA.



**PARTIAL SECOND
FLOOR PLAN - POWER**

SCALE: 1/4" = 1'-0"
0' 2' 4' 8'

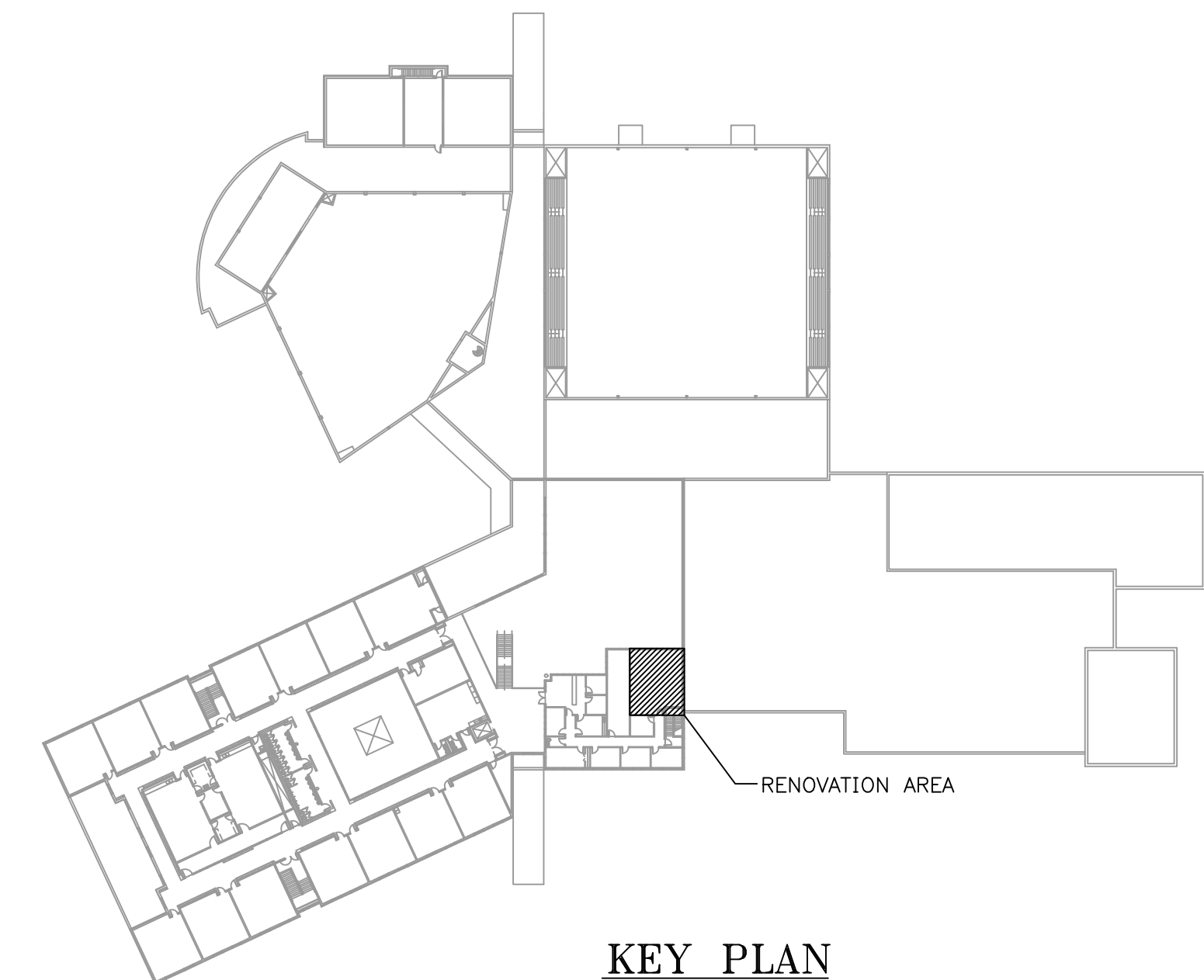
- POWER NOTES:**
1. "EX" BESIDE DEVICE INDICATES EXISTING TO REMAIN.



**PARTIAL SECOND
FLOOR PLAN - COMMUNICATIONS**

SCALE: 1/4" = 1'-0"
0' 2' 4' 8'

- COMMUNICATIONS NOTES:**
1. "EX" BESIDE DEVICE INDICATES EXISTING TO REMAIN.



KEY PLAN

**PARTIAL SECOND
FLOOR PLANS -
ELECTRICAL**

DATE: 06 OCT 2021
PROJECT NO.: 21165
PROJECT MGR.: G-TT

E1.1

LIGHTING FIXTURE SCHEDULE														
DESIGNATION	ILLUMINATION					MOUNTING			DESCRIPTION: SHIELDING, TYPE MATERIALS, FINISH, MOUNTING	MANUFACTURER'S PRODUCT ITEM		* EQUAL PRODUCT PERMITTED	REMARKS	
	WAITS	DELIVERED LUMENS	COLOR TEMPERATURE (°K)	MINIMUM CRI	PENDANT STEM LENGTH	CEILING		WALL		COMPANY	CATALOG NO.			
						SURFACE	RECESSED							
A	38	4900	3500	80							LITHONIA	2BLT4 48L ADSM GZ1 LP835		
B	29	3100	3500	80							LITHONIA	EPANL2X4 3000LM 80CRI 35K MIN10 ZT MVOLT		

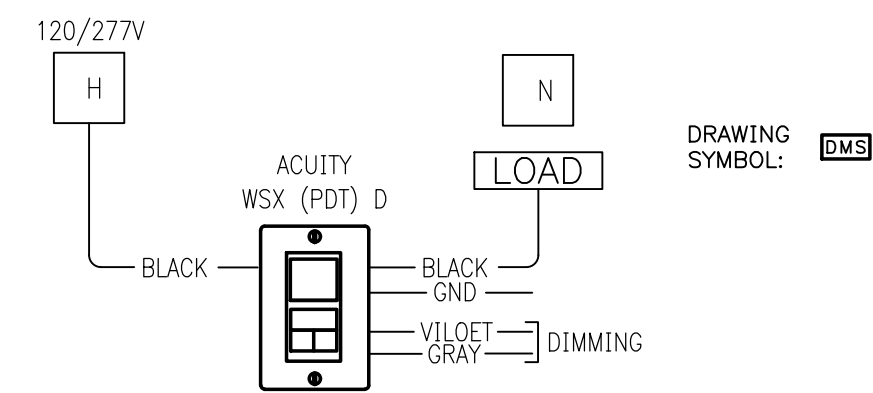
* UNLESS NOTED, EQUAL PRODUCT TO THAT SPECIFIED WILL BE ACCEPTED. THE DESIGN PROFESSIONAL SHALL HAVE SOLE JUDGEMENT CONCERNING EQUIVALENCY OF SUBSTITUTION.

ELECTRICAL SPECIFICATIONS

- SCOPE: FURNISH PLANT, LABOR, MATERIAL, SERVICES, AND EQUIPMENT NECESSARY FOR AND REASONABLY INCIDENTAL TO THE INSTALLATION OF ELECTRICAL FACILITIES SHOWN ON THE DRAWINGS AND CALLED FOR HEREINAFTER.
- CODES AND PERMITS: SECURE NECESSARY PERMITS, PAY NECESSARY FEES, CONFORM TO THE NATIONAL ELECTRICAL CODE AND ALL STATE/ LOCAL CODES.
- SERVICE: SERVICE SHALL BE TAKEN FROM EXISTING FACILITY AT 277/480 VOLTS AND 120/208-VOLTS, 3-PHASE, 4-WIRE AS NOTED ON DRAWINGS.
- WIRING:
 - MINIMUM SIZE CONDUIT SHALL BE 1/2".
 - ALL "AC" VOLTAGE WIRING WITHIN THIS SUITE TO BE INSTALLED IN EITHER EMT OR "MC" WHERE CONCEALED AND PERMITTED BY NATIONAL ELECTRIC CODE.
 - IN FINISHED SPACES WHERE SURFACE WIRING IS REQUIRED USE SURFACE METAL RACEWAY, WIREMOLD 700 SERIES.
 - USE STRANDED CONDUCTORS FOR NO. 8 AND LARGER. USE SOLID CONDUCTORS FOR SIZES 10 AND 12. MINIMUM WIRE SIZE SHALL BE NO. 12 FOR ALL AC VOLTAGE CIRCUITS. INSULATION SHALL BE "THHN/THWN". ALL CONDUCTORS SHALL BE COPPER. PROVIDE SEPARATE "NEUTRAL" CONDUCTOR FOR EACH BRANCH WIRING CIRCUIT. NEUTRAL SHALL BE STRIPED WITH COLOR TO MATCH PHASE CONDUCTOR.
 - SEAL ALL PENETRATIONS THROUGH RATED WALLS WITH A "UL" LISTED FIRESTOPPING SYSTEM.
- LIGHTING FIXTURES: LIGHTING FIXTURES SHALL BE SIMILAR AND EQUAL TO THOSE SCHEDULED ON DRAWINGS.
- EXIT SIGNS AND EMERGENCY LIGHTING: EXIT SIGNS SHALL BE LED, POLYCARBONATE HOUSING WITH MATTE WHITE FINISH AND RED LETTERS TO MATCH EXISTING, WITH BATTERY BACK-UP; LITHONIA EXR-LED-EL-M6. TWIN HEADS SHALL BE 2-1.5 WATT LED LAMPS, WITH NI-CAD BATTERY; LITHONIA ELM-2-LED.
- WIRING DEVICES: WIRING DEVICES SHALL BE SPECIFICATION GRADE RATED 20-AMPERES. MINIMUM COVERS SHALL BE NYLON. NORMAL POWER DEVICES AND COVERS SHALL BE OF COLOR SELECTED BY THE ARCHITECT.
- PANELBOARDS: PROVIDE AND INSTALL NEW CIRCUIT BREAKERS AS REQUIRED IN EXISTING PANELBOARDS.
- GROUNDING: FURNISH AND INSTALL GROUNDING IN ACCORDANCE WITH THE NATIONAL ELECTRICAL CODE. A SEPARATE INSULATED GROUNDING CONDUCTOR SHALL BE PULLED IN ALL CONDUIT RUNS. THESE ARE TYPICALLY NOT ILLUSTRATED ON THE DRAWINGS BUT ARE REQUIRED TO BE INSTALLED.
- JUNCTION AND WALL BOXES: UNLESS NOTED DIFFERENTLY ON DRAWINGS, FURNISH OUTLET BOXES FOR LIGHTING FIXTURES, WALL RECEPTACLES, SWITCHES AND OTHER DEVICES AS REQUIRED. WALL BOXES SHALL BE MINIMUM OF 4" HIGH BY 2 1/8" DEEP BY 2 1/8" WIDE. CEILING BOXES SHALL BE 4-INCH OCTAGON AND 2 1/8" DEEP. PROVIDE EXTENSION AND DEVICE RINGS AS REQUIRED.
- TELEPHONE/DATA: FURNISH AND INSTALL EMPTY RACEWAY AND BOXES FOR TELEPHONE/DATA OUTLETS. BOXES SHALL BE 4" SQUARE WITH ONE-GANG DEVICE RING. IN FINISHED SPACES WHERE SURFACE CABLING IS REQUIRED USE SURFACE METAL RACEWAY, WIREMOLD 2000 SERIES. CABLING TO BE INSTALLED BY OTHERS.
- SITE VISITATION: PRIOR TO COMMENCEMENT OF DEMOLITION WORK, CONTRACTOR SHALL VISIT SITE AND FIELD VERIFY THAT INFORMATION GIVEN REGARDING EXISTING ELECTRICAL SYSTEM IS ACCURATE. ANY DISCREPANCIES SHALL BE BROUGHT TO THE IMMEDIATE ATTENTION OF THE ARCHITECT.
- GUARANTY: GUARANTEE ALL WORK TO BE FREE FROM DEFECTS IN MATERIAL AND WORKMANSHIP FOR ONE YEAR AFTER DATE OF FINAL ACCEPTANCE.

LEGEND

SYMBOL	DESCRIPTION
	LED LIGHTING FIXTURE; "B" REFERS TO DESIGNATION IN THE LIGHTING FIXTURE SCHEDULE; "C" REFERS TO SWITCH CONTROL; AND "2" REFERS TO CIRCUIT NUMBER.
	WALL SWITCH; SINGLE POLE UNLESS NOTED 3- OR 4-WAY; "P" INDICATES EQUIPPED WITH PILOT LIGHT TO INDICATE WHEN SWITCH IS ON; W.P. INDICATES WEATHERPROOF. "K" INDICATES KEY OPERATED SWITCH; +48" / - ABOVE FLOOR EXCEPT IN MASONRY WALLS WHERE HEIGHT SHALL BE ADJUSTED TO HAVE BOX EDGE OCCUR AT A MASONRY JOINT. PROVIDE NEUTRAL CONDUCTOR IN ADDITION TO LINE AND SWITCHED CONDUCTORS.
	LOW-VOLTAGE WALL SWITCH, SAME MOUNTING HEIGHT AS REGULAR WALL SWITCH TURN OUT CONDUIT ABOVE CEILING AND EXTEND LOW VOLTAGE WIRING TO LIGHTING RELAY OR RELAY CABINET AS REQUIRED.
	OCCUPANCY/VACANCY SENSOR FOR LIGHTING CONTROL, CEILING OR WALL MOUNTED AS INDICATED ON PLANS. MOUNT WALL-MOUNTED SENSOR AT SAME HEIGHT AS WALL SWITCH (+48" ABOVE FINISHED FLOOR). "D" BY SENSOR ON PLANS INDICATES DUAL RELAY TYPE SENSOR ALLOWING INDEPENDENT CONTROL OF TWO SEPARATE LIGHTING LOADS. PROVIDE NEUTRAL CONDUCTOR IN ADDITION TO LINE AND SWITCHED CONDUCTORS.
	POWER PACK ROOM CONTROLLER FOR CEILING MOUNTED OCCUPANCY SENSOR SYSTEM, SEE PLANS AND SPECIFICATIONS FOR ADDITIONAL INFORMATION.
	WALL MOUNTED LINE VOLTAGE OCCUPANCY/VACANCY SENSOR WITH 0-10 VOLT DIMMER, PROGRAM TO OPERATE IN "VACANCY" MODE, +48" AFF., SET UP FOR 1% DIMMING TO MATCH LIGHTING FIXTURE DRIVER, SEE DETAIL ON DRAWINGS.
	EXIT SIGN WITH BUILT-IN TWIN HEAD EMERGENCY LIGHT. "W" INDICATES WALL MOUNTING, "C" INDICATES CEILING MOUNTING. "S" INDICATES SINGLE FACE, "D" INDICATES DOUBLE FACE, "P" INDICATES PENDANT MOUNTED. PROVIDE DIRECTIONAL ARROWS ON EXIT SIGNS AS INDICATED ON PLANS. "WG" BY DEVICE INDICATES WIRE GUARD TO BE PROVIDED. UNIT EQUIPPED WITH BATTERY BACK-UP.
	DUPLEX PLUG RECEPTACLE; 120-VOLTS; 20-AMPERES; MOUNT 3" ABOVE BACKSPASH AT WORK COUNTERS AND LAVATORIES AND +18" AFF ELSEWHERE UNLESS NOTED TO A DIFFERENT HEIGHT. TAMPER RESISTANT, UNLESS NOT REQUIRED BY CODE.
	QUADRAPLEX PLUG RECEPTACLE, 120-VOLTS, 20-AMPERES. MOUNT 3" ABOVE BACKSPASH AT WORK COUNTERS/LAVATORIES AND +18" AFF ELSEWHERE UNLESS NOTED TO A DIFFERENT HEIGHT. TAMPER RESISTANT, UNLESS NOT REQUIRED BY CODE.
	CONDUIT IN THE WALL OR CEILING CONSTRUCTION SHOWN TURNING DOWN.
	JUNCTION BOX, SIZE AND USE AS REQUIRED; COVERPLATE SHALL OVERLAP THE BOX EDGE BY 1/2" WHERE RECESSED IN WALL WITH CONCEALED WIRING.
	HOMERUN CIRCUIT WIRING TO EXISTING PANELBOARD, NOTATION "3(20/1)" INDICATES HOMERUN WIRING TO BE CONNECTED TO THREE 20/1 CIRCUIT BREAKERS IN EXISTING PANELBOARD. CROSS LINES INDICATES THE NUMBER OF #12 AWG PHASE AND NEUTRAL CONDUCTORS WHERE MORE THAN TWO SINGLE CIRCUIT BRANCH CIRCUIT WIRING RUNS SHOWN WITHOUT CROSS LINES SHALL BE PROVIDED WITH 2#12, 1#12G. EACH 20 AMPERE BRANCH CIRCUIT SHALL BE PROVIDED WITH SEPARATE NEUTRAL CONDUCTOR. SHARING OF NEUTRAL CONDUCTORS SHALL NOT BE PERMITTED. PROVIDE EQUIPMENT GROUNDING CONDUCTOR IN EACH CONDUIT RUN.
	FIRE ALARM COMBINATION HORN/STROBE UNIT, CANDELA AND DBA RATING AS NOTED ON DRAWINGS. "C" INDICATES HORN/STROBE UNIT TO BE CEILING MOUNTED. "WG" BY DEVICE INDICATES CONTRACTOR TO PROVIDE WIRE GUARD.
	DATA/VOICE OUTLET, PROVIDE 4 1 1/16" SQUARE BOX WITH SINGLE-GANG DEVICE RING AND BLANK COVERPLATE. EXTEND EMPTY 1" CONDUIT FROM OUTLET BOX TO POINT ABOVE ACCESSIBLE LAY-IN CEILING AND TERMINATE WITH BUSHING LOCATE OUTLET BOX 3" ABOVE BACKSPASH AT WORK COUNTERS AND +18" AFF ELSEWHERE UNLESS NOTED TO A DIFFERENT HEIGHT ON DRAWINGS. "W" BY DEVICE INDICATES DEVICE TO BE DEDICATED FOR WIRELESS ACCESS POINT USE.

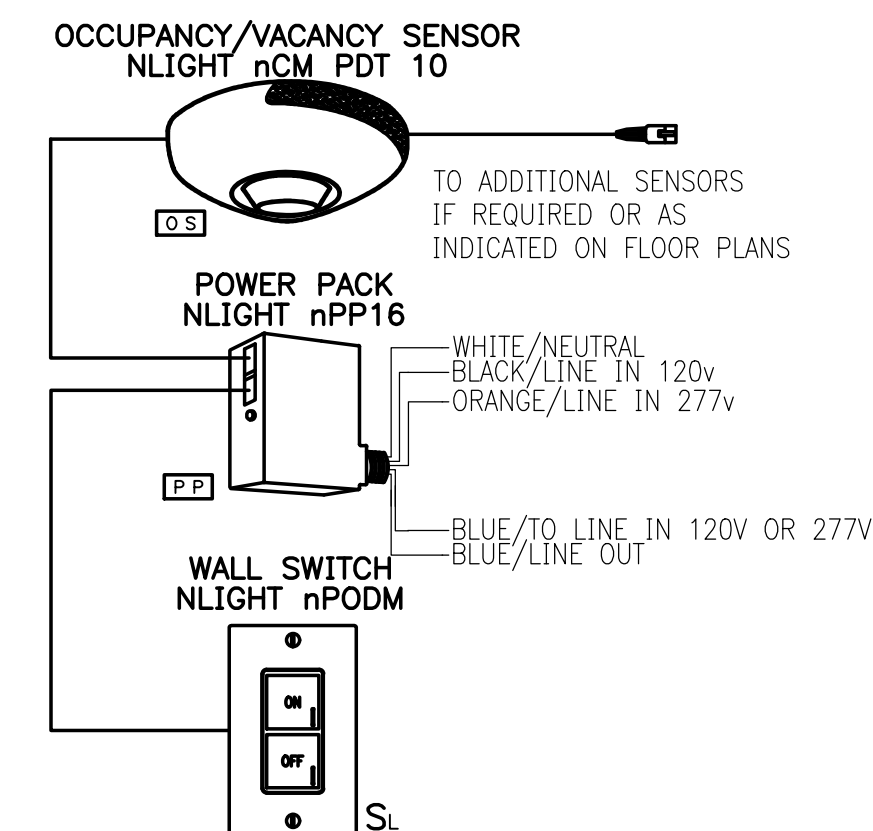


**TYPICAL IN-WALL SENSOR
0-10 VOLT DIMMING
LIGHTING CONTROL DETAIL**
N.T.S.

ACUTY WSX PDT SINGLE CIRCUIT
IN-WALL, 120/277V, 6A DIMMER
WITH DUAL TECHNOLOGY
OCCUPANCY AND VACANCY SENSOR.

LIGHTING CONTROL NARRATIVE:

FIXTURES ARE TURNED ON MANUALLY BY DIMMER SWITCH AND TURNED OFF AUTOMATICALLY WHEN ROOM BECOMES VACANT.



**TYPICAL CEILING MOUNTED SENSOR
LIGHTING CONTROL DETAIL**
N.T.S.

LIGHTING CONTROL NARRATIVE:
FIXTURES ARE TURNED ON MANUALLY BY WALL SWITCH AND TURNED OFF AUTOMATICALLY WHEN ROOM BECOMES VACANT.

**GEORGE
ARMOUR
EWART
ARCHITECT**

404 Bearden Park Circle
Knoxville, TN 37919
865.602.7771
Fax 865.602.7742
www.georgeewart.com



SECOND FLOOR RENOVATION FOR
**UNION COUNTY HIGH
SCHOOL**
150 Main Street
Union County, Tennessee

LEGENDS AND SCHEDULES

DATE: 06 OCT 2021
PROJECT NO.: 21165
PROJECT MGR.: G-TT

E1.2