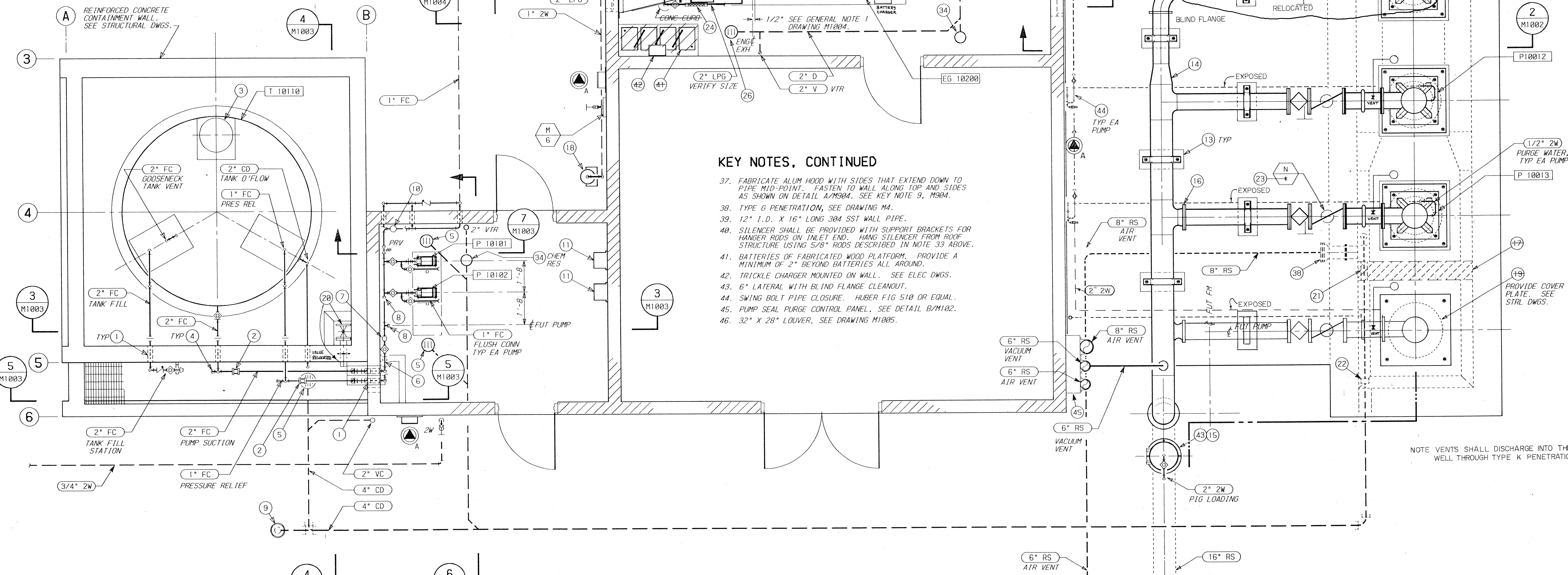


A B C D E F G H I J K L M N O P

KEY NOTES:

1. TYPE E PENETRATION. SEE DRAWING M4.
2. TEFLON BELLOWS TYPE EXPANSION JOINT.
3. TANK ACCESS MANHOLE.
4. CAP FOR FUTURE EXTENSION.
5. FLOOR DRAIN - CHEMICAL RESISTANT
6. WYE-BODY STRAINER
7. CALIBRATION RESERVOIR
8. PLUG FOR FUTURE EXTENSION.
9. YARD CLEANOUT. SEE DETAIL K/M5.
10. PULSATION DAMPER
11. PUMP CONTROL PANEL
12. MANUALLY OPERATED SLUICE GATE HOIST
13. CONCRETE PIPE SADDLE WITH HOLD-DOWN STRAP. SEE DETAIL C/S1003.
14. 10 X 16 INCH CONCENTRIC INCREASER
15. PIG LAUNCHER
16. RS TEE WITH FLANGE FOR FUTURE SEALING.
17. KNOCK-OUT WALL FOR FUTURE EXTENSION.
18. EMERGENCY SHOWER AND EYE-WASH
19. PROVIDE 28-1/2" DIAMETER (MINIMUM) OPENING FOR FUTURE PUMP. COVER WITH CHECKERPLATE SECURED WITH COUNTERSUNK MACHINE-SCREWS IN EXPANSION SHIELDS (TYPICAL EACH CORNER). PROVIDE GROUT APPROACH TO CHECKERPLATE. FLUSH WITH TOP. SLOPE AT 1:6.
20. 4" CPVC GATE VALVE WITH CPVC STEM EXTENDED TO TOP OF CONCRETE WALL. MOUNT ON FABRICATED PVC WALL PENETRATION SIMILAR IN CONSTRUCTION TO TYPE 21.
21. TYPE D PENETRATION. SEE DRAWING M4.
22. COUPLING TO JOIN CHEMICAL DRAIN PIPE TO TEMPORARY EXTENSION THROUGH TEMPORARY WET WELL WALL.
23. BEND 1/4" THICK X 4" WIDE STEEL PLATE SADDLE TO MATCH BOTTOM SHAPE OF VALVE. WELD BENT PLATE SADDLE TO TYPE N STRUCTURAL ATTACHMENT. HOT DIP GALVANIZE AFTER FABRICATION.
24. FLEXIBLE METAL HOSE, 9" LIVE LENGTH MINIMUM. VERIFY AND PROVIDE ACTUAL LENGTH REQUIRED OVER 9".
25. HOT WATER (HEAT RESERVOIR) PIPING SHALL CONSIST OF (2) INSULATED PIPES IN PACKAGED CARRIER CONDUIT. SYSTEM SHALL INCLUDE ALL NECESSARY FINISHING ITEMS, EXPANSION JOINTS, SUPPORTS AND GUIDES. SEE SPECS.
26. 2" TYPE III FLOOR DRAIN. SEE DRAWING M5.
27. 2" TYPE II EQUIPMENT DRAIN. SEE DRAWING M5.
28. SUPPORT HEAT RESERVOIR PIPE WITH FLOOR MOUNTED RACK SIMILAR TO TYPICAL RACK SHOWN ON DRAWING M1.
29. OUTLET AIR DUCT. CONNECT TO WALL WITH ANGLE PER SMACNA STANDARDS.
30. 5'4" W X 6'-8" LOUVER WITH INSECT SCREEN ON INTERIOR. AIRLOLITE K666 OR EQUAL.
31. FLEXIBLE DUCT CONNECTION. OUTLET DUCT TO RADIATOR.
32. EXHAUST SUPPORT SYSTEM. SEE DET B/M906.
33. 5/8" DIA SUPPORT RODS. SEE DWG M1 FOR TYP DETAIL. SEE KEY NOTE 7, DWG M904.
34. TYPE I FLOOR CLEANOUT. SEE DWG M5.
35. EXHAUST PIPE WALL PENETRATION. SEE DETAIL A/M904.
36. SILENCER FLANGE SUPPORT BRACKET AND ANCHOR. SEE DETAIL A/M904.



KEY NOTES, CONTINUED

37. FABRICATE ALUM HOOD WITH SIDES THAT EXTEND DOWN TO PIPE MID-POINT. FASTEN TO WALL ALONG TOP AND SIDES AS SHOWN ON DETAIL A/M904. SEE KEY NOTE 9, M904.
38. TYPE G PENETRATION, SEE DRAWING M4.
39. 12" I.D. X 16" LONG 304 SST WALL PIPE.
40. SILENCER SHALL BE PROVIDED WITH SUPPORT BRACKETS FOR HANGER RODS ON INLET END. HANG SILENCER FROM ROOF STRUCTURE USING 5/8" RODS DESCRIBED IN NOTE 33 ABOVE.
41. BATTERIES OF FABRICATED WOOD PLATFORM. PROVIDE A MINIMUM OF 2" BEYOND BATTERIES ALL AROUND.
42. TRICKLE CHARGER MOUNTED ON WALL. SEE ELEC DWGS.
43. 6" LATERAL WITH BLIND FLANGE CLEANOUT.
44. SWING BOLT PIPE CLOSURE. HUBER FIG 510 OR EQUAL.
45. PUMP SEAL PURGE CONTROL PANEL. SEE DETAIL B/M102.
46. 32" X 28" LOUVER. SEE DRAWING M1005.

PLAN
SCALE: 3/8" = 1'-0"

NOTE VENTS SHALL DISCHARGE INTO THE WET WELL THROUGH TYPE K PENETRATION

RECORD DRAWINGS 12/15/92

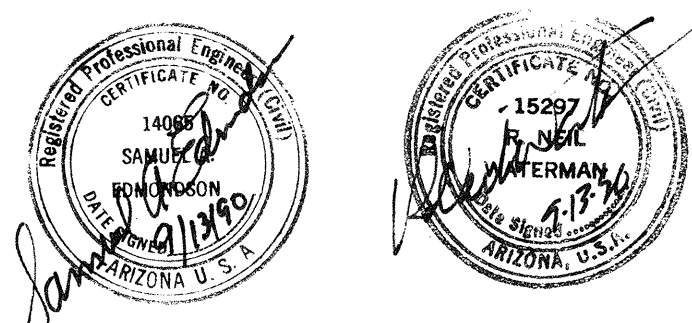
BC BROWN AND CALDWELL
CONSULTING ENGINEERS
PHOENIX, ARIZONA

PROJECT MANAGER: *[Signature]*
DATE: 9-13-90

APPROVED: *[Signature]* DATE: 9-13-90
APPROVED: *[Signature]* DATE: 9-26-90

LINE IS 2 INCHES AT FULL SCALE (IF NOT 2" SCALE ACCORDINGLY)

FILE	3453
DRAWN	BEW
DESIGNED	WMH & BEW
CHECKED	APS
CHECKED	RNW



ZONE		REVISIONS		
REV.	DESCRIPTION	BY	DATE	APP.

CITY OF AVONDALE

WASTEWATER TREATMENT FACILITY

INTERCEPTOR PUMPING STATION

PLAN

DRAWING NUMBER	M1001
SHEET NUMBER	201

A B C D E F G H I J K L M N O P