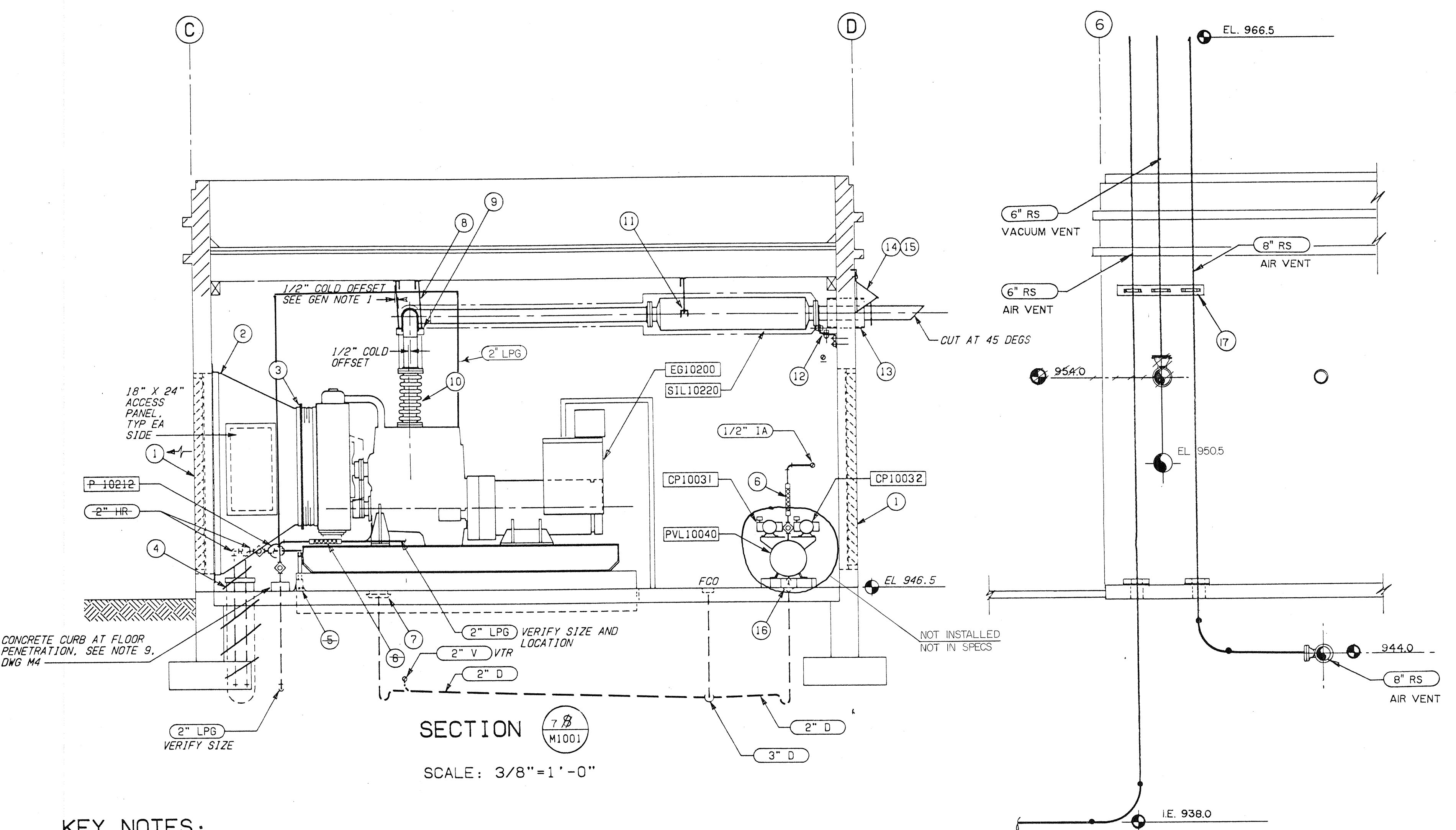


A B C D E F G H I J K L M N O P

10
9
8
7
6
5
4
3
2
1

10
9
8
7
6
5
4
3
2
1

GENERAL NOTES:
 1. INSTALL EXHAUST PIPE TO PROVIDE 1/2" NEGATIVE (SHORT) COLD OFFSET IN BOTH LONGITUDINAL AND TRAVERSE DIRECTIONS SO WHEN EXHAUST IS HOT, IT WILL EXPAND INTO A POSITION APPROXIMATELY 1/2" REARWARD OF EXHAUST OUTLET AND CENTERED TRANSVERSELY OVER ENGINE EXHAUST OUTLET.



SECTION 7 B M1001
 SCALE: 3/8"=1'-0"

SECTION 9 M1001
 SCALE: 3/8"=1'-0"

KEY NOTES:

1. 5'-4" W X 6'-8" H AIR LOUVER WITH INSIDE INSECT SCREEN. AIROLITE MODEL K666 OR EQUAL.
2. OUTLET AIR DUCT. CONNECT TO WALL WITH ANGLE PER SMACNA STANDARDS.
3. FLEXIBLE DUCT CONNECTION. OUTLET DUCT TO RADIATOR.
4. HOT WATER (HEAT RESERVOIR) PIPING SHALL CONSIST OF (2) INSULATED PIPES IN PACKAGED CARRIER CONDUIT. SYSTEM SHALL INCLUDE ALL NECESSARY FINISHING ITEMS, EXPANSION JOINTS, SUPPORTS AND GUIDES. SEE SPECS.
5. SUPPORT HEAT RESERVOIR PIPING WITH FLOOR MOUNTED RACK SIMILAR TO TYPICAL RACK SHOWN ON DRAWING M1.
6. FLEXIBLE METAL HOSE, 9" LIVE LENGTH MINIMUM. VERIFY AND PROVIDE ACTUAL LENGTH REQUIRED IF GREATER THAN 9".
7. 2" TYPE 111 FLOOR DRAIN. SEE DRAWING M5.
8. 5/8" DIAMETER SUPPORT RODS FOR PIPES SUBJECT TO HORIZONTAL MOVEMENT. SEE DRAWING M1 FOR DETAIL. INSTALL HANGER RODS WITH COLD OFFSET AS INDICATED SO WHEN EXHAUST SYSTEM IS HOT, RODS WILL BE VERTICAL.
9. EXHAUST SYSTEM SUPPORT. SEE DETAIL B/M905.
10. 6" DIAMETER (VERIFY) EXPANSION JOINT. EXPANSION JOINT SHALL BE CAPABLE OF ABSORBING THE MOVEMENT CAUSED BY THERMAL EXPANSION OF EXHAUST SYSTEM. IN ADDITION, THE EXPANSION JOINT SHALL BE CAPABLE OF ACCOMMODATING THE MOVEMENT THAT OCCURS DURING STARTING AND STOPPING ENGINE.
11. SILENCER SHALL BE PROVIDED WITH SUPPORT BRACKETS ON INLET END. HANG SILENCER FROM SUPPORT SYSTEM SECURED TO ROOF STRUCTURE.
12. SILENCER FLANGE SUPPORT BRACKET AND ANCHOR. SEE DETAIL A/M904.
13. 12" I.D. X 16" LONG 304 SST SCH 5S WALL PIPE CAST IN WALL.
14. EXHAUST PIPE WALL PENETRATION. SEE DETAIL A/M904.
15. FABRICATE ALUMINUM HOOD WITH SIDES THAT EXTEND DOWN TO PIPE MID-POINT. FASTEN TO WALL ALONG TOP AND SIDES AS SHOWN. BED HOOD FLANGE IN CALKING BEFORE FASTENING.
16. 2" TYPE 11 EQUIPMENT DRAIN. SEE DRAWING M5.
17. FABRICATED STEEL WALL MOUNTED PIPE BRACE

RECORD DRAWINGS 12/15/92

<p>BROWN AND CALDWELL CONSULTING ENGINEERS PHOENIX, ARIZONA</p> <p>PROJECT: WASTEWATER TREATMENT FACILITY SUBMITTED: <i>[Signature]</i> DATE: 9/13/90 APPROVED: <i>[Signature]</i> DATE: 9/13/90 APPROVED: <i>[Signature]</i> DATE: 9/25/90</p>	<p>LINE IS 2 INCHES AT FULL SIZE (IF NOT 2" SCALE ACCORDINGLY)</p>	<p>FILE 3453 DRAWN BEW DESIGNED WMH & BEW CHECKED APS CHECKED RNW</p>	<p>REVISIONS</p> <table border="1" style="width: 100%; border-collapse: collapse;"> <thead> <tr> <th>ZONE REV.</th> <th>DESCRIPTION</th> <th>BY</th> <th>DATE</th> <th>APP.</th> </tr> </thead> <tbody> <tr><td> </td><td> </td><td> </td><td> </td><td> </td></tr> <tr><td> </td><td> </td><td> </td><td> </td><td> </td></tr> <tr><td> </td><td> </td><td> </td><td> </td><td> </td></tr> <tr><td> </td><td> </td><td> </td><td> </td><td> </td></tr> </tbody> </table>	ZONE REV.	DESCRIPTION	BY	DATE	APP.																					<p>CITY OF AVONDALE</p> <p>WASTEWATER TREATMENT FACILITY</p>	<p>INTERCEPTOR PUMPING STATION</p> <p>SECTIONS AND DETAIL</p>	<p>DRAWING NUMBER M1004 SHEET NUMBER 204</p>
	ZONE REV.	DESCRIPTION	BY	DATE	APP.																										
<p>15788 DIETERICH-POST</p>			<p>A B C D E F G H I J K L M N O P</p>																												