

- ① AREA 1 TEMPORARY EASEMENT 0.014 ACRE
- ② AREA 2 PERMANENT R/W 0.058 ACRE
- ③ AREA 3 TEMPORARY EASEMENT 0.044 ACRE
- ④ AREA 4 TEMPORARY EASEMENT 0.029 ACRE
- ⑤ AREA 5 PERMANENT R/W 0.056 ACRE
- ⑥ AREA 6 TEMPORARY EASEMENT 0.029 ACRE

LL = LAND LOT
 LLL = LAND LOT LINE
 C/L = CENTER LINE
 N/F = NOW OR FORMERLY
 R/W = RIGHT OF WAY
 P/L = PROPERTY LINE
 IPS = 1/2" REBAR SET WITH CAP
 DB = DEED BOOK
 PB = PLAT BOOK
 PG = PAGE
 CAB = PLAT CABINET
 SL = SLIDE
 POC = POINT OF COMMENCEMENT
 POB = POINT OF BEGINNING

RESERVED FOR CLERK'S FILING INFORMATION

C/L INTERSECTION OF JOHN GARNER ROAD & MOUNT OLIVE CHURCH ROAD

THIS SURVEYOR DOES NOT GUARANTEE THAT ALL EASEMENTS AFFECTING THIS PROPERTY ARE SHOWN.

THE FIELD DATA UPON WHICH THIS PLAT IS BASED HAS A POSITIONAL TOLERANCE NOT EXCEEDING 0.10 FOOT PER MONUMENTED LINE, AND HAS NOT ADJUSTED. THIS PLAT HAS BEEN CALCULATED FOR CLOSURE AND IS FOUND TO BE ACCURATE WITHIN ONE FOOT IN 45064+ FEET.

EQUIPMENT USED: TRIMBLE S6 ROBOTIC & CARLSON BRX7 GPS.

THIS SURVEY WAS PREPARED WITHOUT THE AID OF A TITLE SEARCH AND IS SUBJECT TO ANY AND ALL DISCLOSURES THAT A TITLE SEARCH MAY YIELD.

THIS SURVEY IS CERTIFIED SOLELY TO THE PARTY OR PARTIES NAMED HEREON.

UTILITIES WERE NOT LOCATED AS PART OF THE SCOPE OF THIS SURVEY

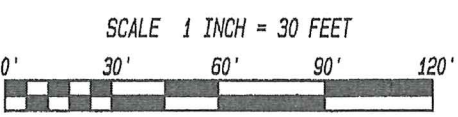
AS REQUIRED BY SUBSECTION (D) OF O.C.G.A. SECTION 15-6-67, THIS PLAT HAS BEEN PREPARED BY A LAND SURVEYOR AND APPROVED BY ALL APPLICABLE LOCAL JURISDICTIONS FOR RECORDING AS EVIDENCED BY APPROVAL CERTIFICATES, SIGNATURES, STAMPS, OR STATEMENTS HEREON. SUCH APPROVALS OR AFFIRMATIONS SHOULD BE CONFIRMED WITH THE APPROPRIATE GOVERNMENTAL BODIES BY ANY PURCHASER OR USER OF THIS PLAT AS TO INTENDED USE OF ANY PARCEL. FURTHERMORE, THE UNDERSIGNED LAND SURVEYOR CERTIFIES THAT THIS PLAT COMPLIES WITH THE MINIMUM TECHNICAL STANDARDS FOR PROPERTY SURVEYS IN GEORGIA AS SET FORTH IN THE RULES AND REGULATIONS OF THE GEORGIA BOARD OF REGISTRATION FOR PROFESSIONAL ENGINEERS AND LAND SURVEYORS AND AS SET FORTH IN O.C.G.A. SECTION 15-6-67.

LUMPKIN COUNTY SURVEYOR



LINE	BEARING	DISTANCE
L1	N80°50'33"N	25.00'
L2	N80°50'33"E	86.76'
L3	N89°39'28"N	22.92'
L4	N00°20'32"E	25.00'
L5	S89°39'28"E	22.92'
L6	S80°50'33"E	25.00'
L7	S09°09'27"W	25.00'
L8	N09°09'27"E	25.00'
L9	N07°22'20"E	25.00'
L10	S09°09'27"W	25.00'
L11	N89°39'28"N	49.14'
L12	N00°20'32"E	25.00'
L13	S80°50'33"E	43.20'
L14	N09°09'27"E	25.00'
L15	N00°28'22"E	25.00'

LINE	CHORD BEARING	CHORD	RADIUS	ARC
C1	N81°44'07"W	13.24'	425.00'	13.24'
C2	N86°08'34"W	52.11'	425.00'	52.15'
C3	S86°08'34"E	55.18'	450.00'	55.21'
C4	S81°44'07"E	14.02'	450.00'	14.02'
C5	N85°11'06"W	53.00'	350.00'	53.05'
C6	N89°35'33"W	0.80'	350.00'	0.80'
C7	S89°35'33"E	0.86'	375.00'	0.86'
C8	S85°11'06"E	56.79'	375.00'	56.84'



PLAT OF RIGHT OF WAY ACQUISITION SURVEY FOR

LUMPKIN COUNTY

LAND LOT 70, 11TH DISTRICT ORIGINALLY HALL
LUMPKIN COUNTY, GEORGIA

LSF # 1074; ALTASURV LLC dba

GEOIMAGE

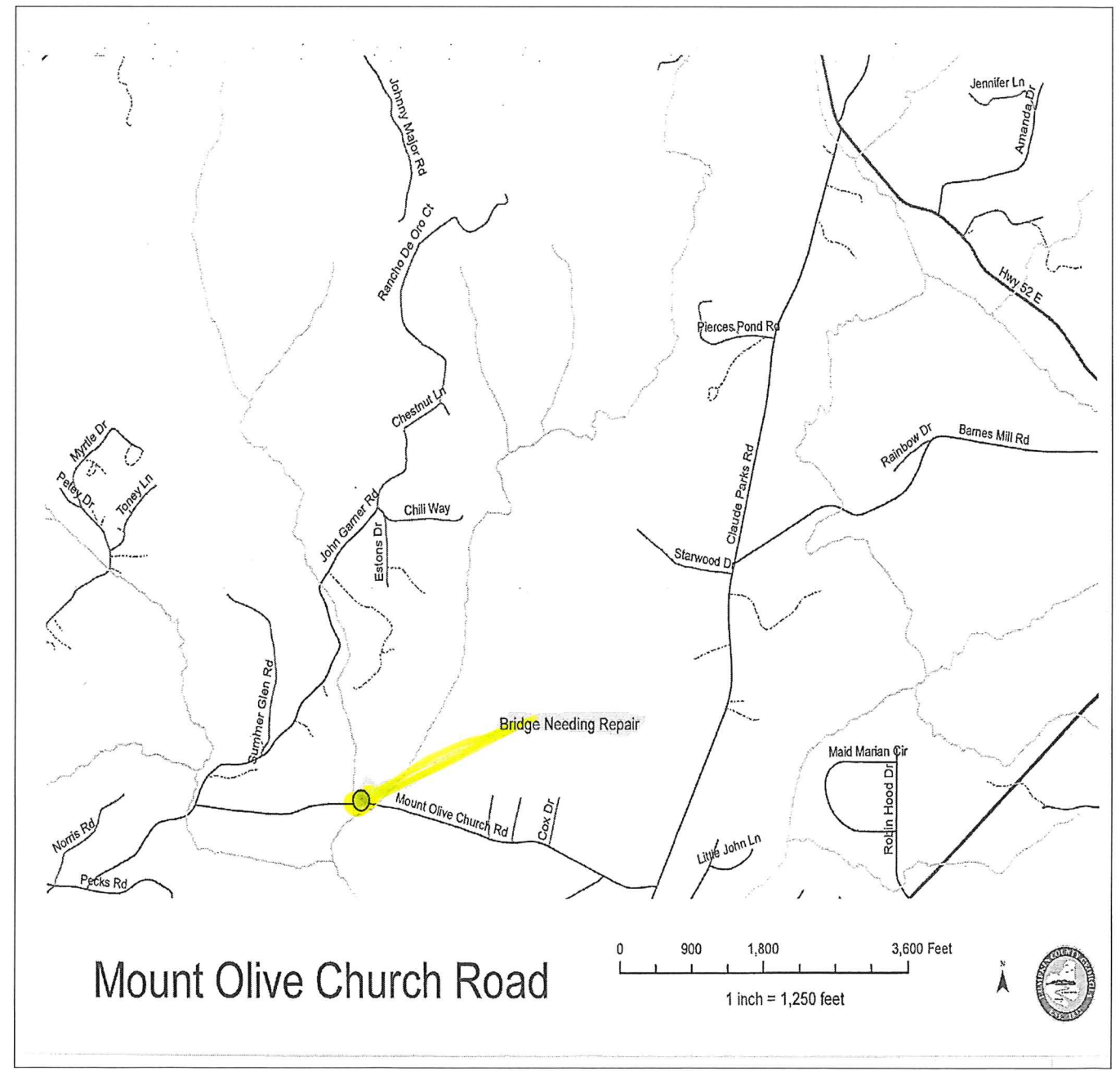
LAND SURVEYING, LAND PLANNING & DESIGN
21 ENOTA STREET, DAHLONEGA, GA 30533, (706) 864-7298

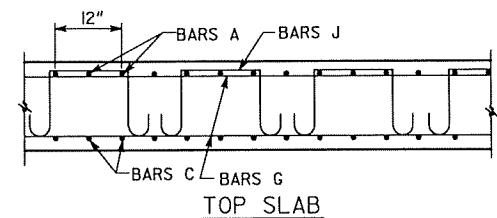
PLAT DATE: JANUARY 12, 2023
 FIELD DATES: DECEMBER 30, 2022
 JANUARY 10 & 11, 2023

FIELD CREW: PDA/JH/SM/JS/NT
 DRAWN BY: JCH/JTG

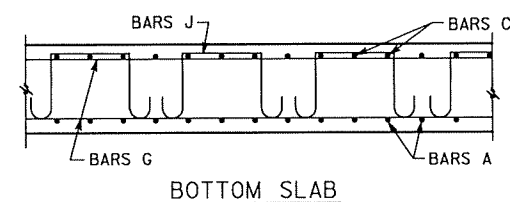
DRWG FILE: MT OLIVE CULVERT

JOB #3860-30



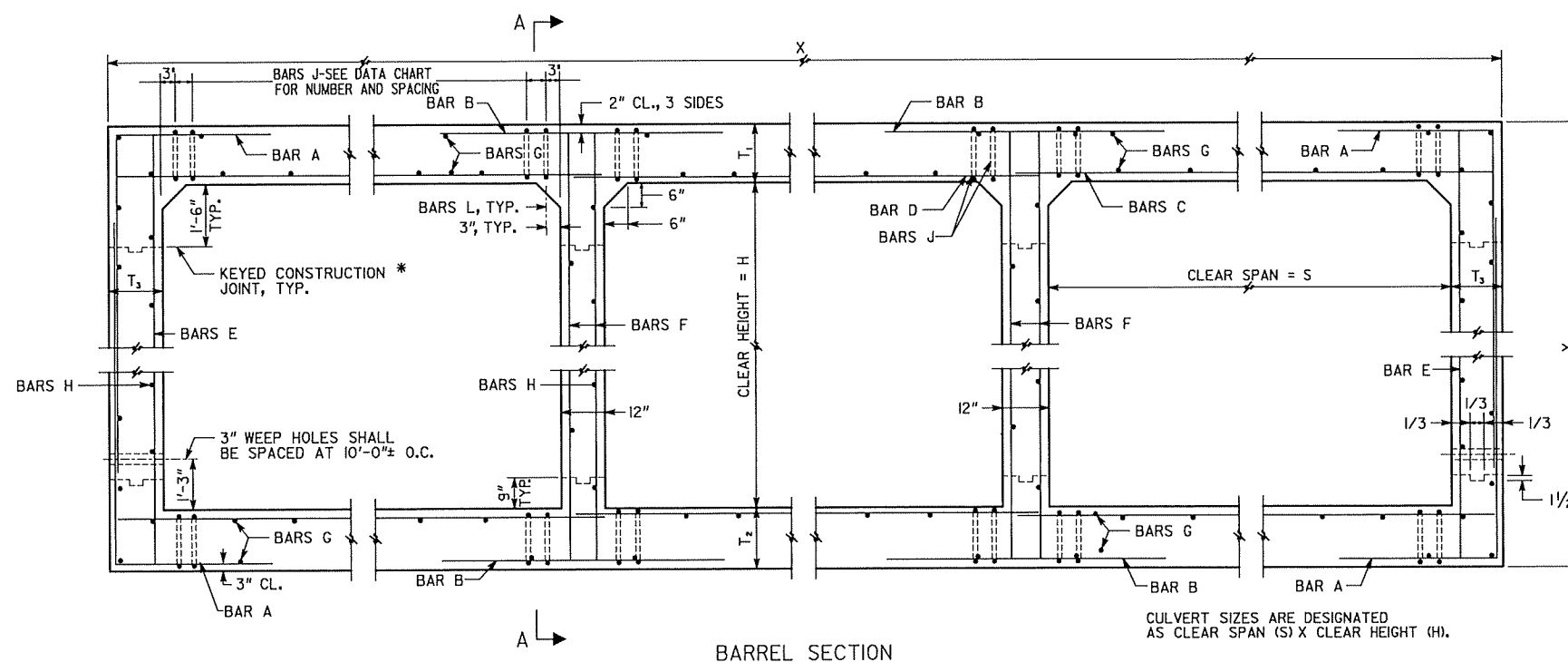


NOTE: SPACING OF BARS A AND C IS 6" OR 12". SEE BARREL REINFORCEMENT QUANTITIES AND DIMENSIONS.



NOTE: LONGITUDINAL WINGWALL AND PARAPET BARS EXTEND INTO BARREL. SEE WINGWALL AND PARAPET STANDARDS.

SECTION A-A



* AT CONTRACTORS OPTION, THE LOWER CONSTRUCTION JOINT IN THE BARREL WALL MAY BE SHIFTED TO 6" ABOVE THE TOP OF THE BOTTOM SLAB.

FOR BAR DIMENSIONS SEE BAR REINFORCEMENT DETAILS. NUMBER OF J BARS SHOWN IN DATA CHART IS THE NUMBER PER CORNER IN ANY ONE TRANSVERSE PLANE. THE TOTAL NUMBER OF J BARS REQUIRED DEPENDS UPON THE LENGTH OF THE SECTION.

DESIGN	1	2	3	4	5	6	7	8
MAXIMUM FILL HEIGHT	10'	20'	30'	40'	50'	60'	70'	80'

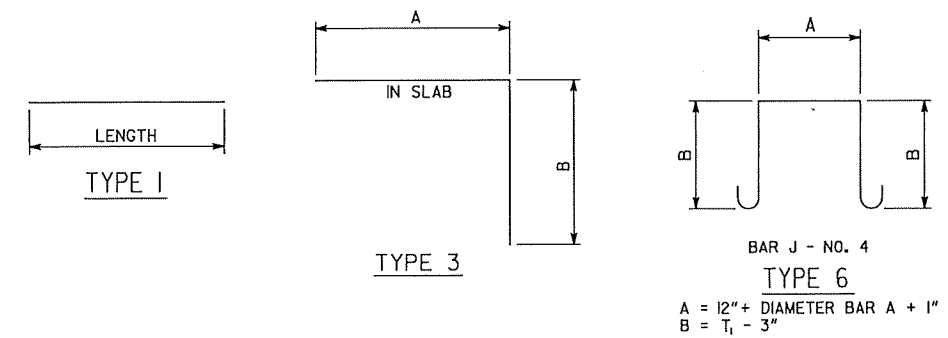
- MINIMUM HEIGHT FROM TOP OF CULVERT TO BOTTOM OF BASE WITHIN TRAVELWAY SHALL BE 1'-0".
- DESIGN OF THE CULVERT SHALL BE DETERMINED BY THE MAXIMUM HEIGHT OF FILL WITH ONLY A SINGLE DESIGN BEING USED FOR THE ENTIRE INSTALLATION.
- TRANSVERSE CONSTRUCTION JOINTS SHALL BE PLACED NORMAL TO THE CENTERLINE OF THE CULVERT AT THE OUTSIDE SHOULDER BREAK POINTS. THE MAXIMUM POUR LENGTH ALONG THE LENGTH OF THE CULVERT SHALL NOT EXCEED 40'-0" FOR DESIGNS 1 TO 3 AND 30'-0" FOR DESIGNS 4 AND ABOVE.
- LONGITUDINAL BARREL REINFORCEMENT STEEL IN THE TRANSVERSE CONSTRUCTION JOINTS SHALL EXTEND THROUGH JOINTS.
- CONSTRUCTION JOINTS SHALL BE WATERPROOFED ON THE EXTERIOR TOP AND SIDES OF BARREL IN ACCORDANCE WITH SECTION 530 OF GEORGIA STANDARD SPECIFICATIONS. WATERPROOFING SHALL BE APPLIED WHEN CONCRETE IS AT LEAST 7 DAYS OLD. ALL COSTS ASSOCIATED WITH WATERPROOFING SHALL BE INCLUDED IN OTHER ITEMS AND WILL NOT BE MEASURED SEPARATELY FOR PAYMENT.
- MINIMUM LENGTH OF LAP SPLICE FOR LONGITUDINAL BARREL REINFORCING STEEL SHALL BE 2'-0".

GENERAL NOTES

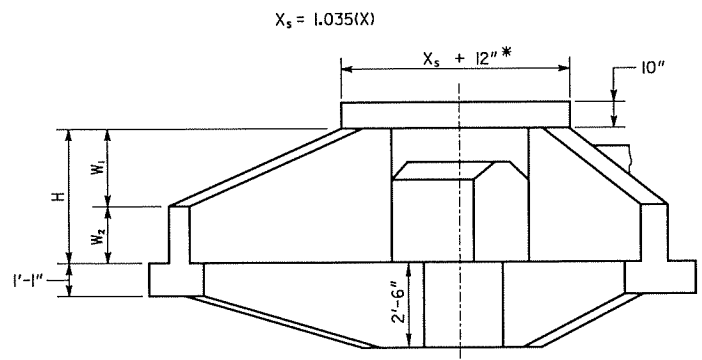
- SPECIFICATIONS: GEORGIA STANDARD, CURRENT EDITION & SUPPLEMENTS THERETO.
- ALL CONCRETE SHALL BE CLASS "AA".
- CHAMFER ALL EXPOSED EDGES 3/4".
- COST OF DRAIN PIPES, WEEP HOLES, COARSE AGGREGATE, AND ANY OTHER INCIDENTAL ITEMS SHALL BE INCLUDED IN THE PRICE BID FOR CONTRACT ITEMS.
- CONSTRUCTION JOINTS IN BARREL WALLS ARE REQUIRED.
- FOR DETAILS OF WINGWALLS AND PARAPETS SEE "REINFORCED CONCRETE WINGWALLS, TOEWALLS AND PARAPETS FOR CONCRETE BOX CULVERTS" SHEETS.

DESIGN DATA

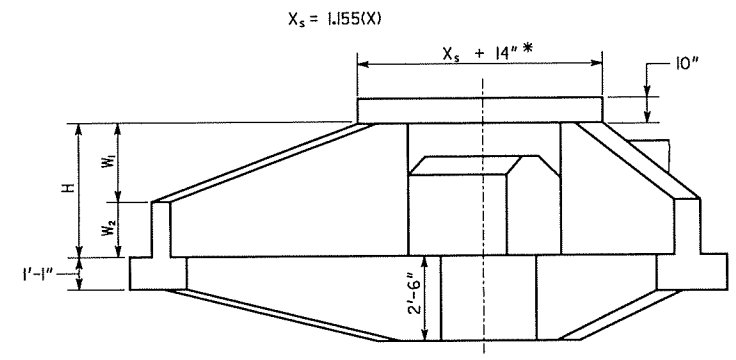
SPECIFICATIONS - AASHTO LRFD BRIDGE DESIGN SPECIFICATIONS, 7TH EDITION, 2014. TYPICAL HL-93 LOADING.



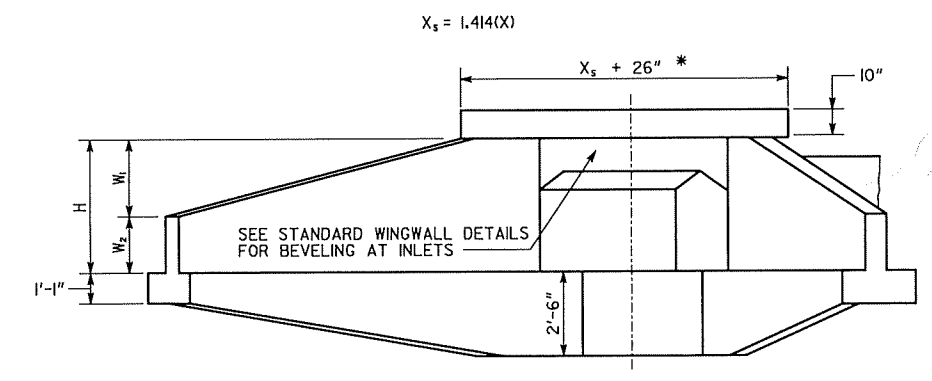
DATE		DEPARTMENT OF TRANSPORTATION STATE OF GEORGIA	
REVISION		STANDARD REINFORCED CONCRETE TRIPLE BOX CULVERT	
NO SCALE		SEPTEMBER 2017	
DES. YSK (SUBMITTED)	TRA. (APPROVED)	STATE DESIGN POLICY ENGINEER MARGARET B. PIRELO CHIEF ENGINEER	NUMBER 2403 SHEET 1 OF 3



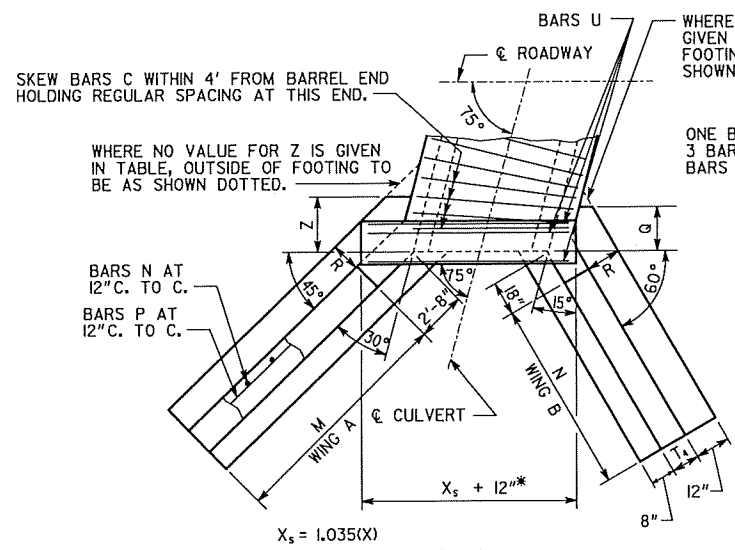
ELEVATION



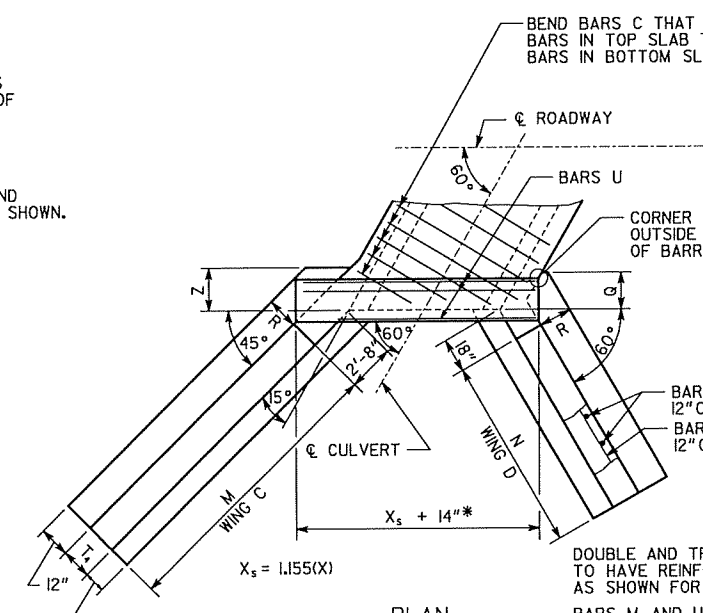
ELEVATION



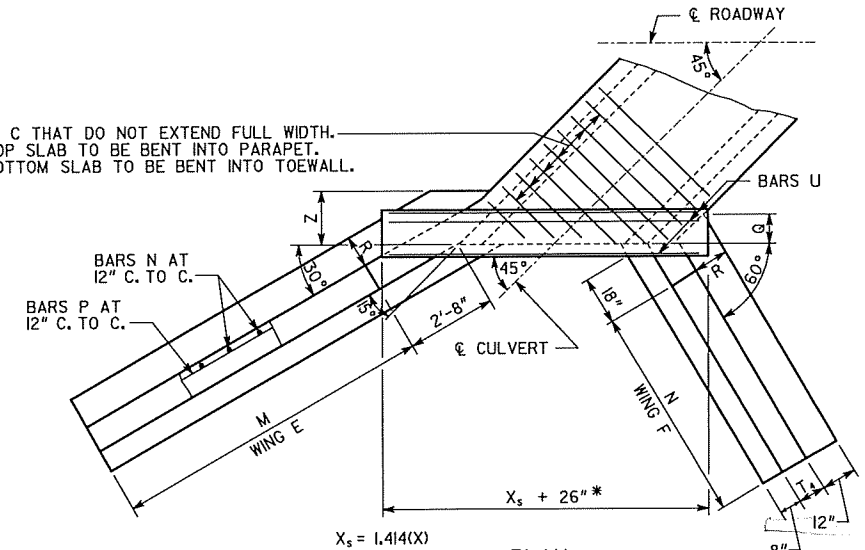
ELEVATION



PLAN
75° SKEW



PLAN
60° SKEW



PLAN
45° SKEW

* ROUND DIMENSION UP TO THE NEAREST INCH

BEND BARS C THAT DO NOT EXTEND FULL WIDTH. BARS IN TOP SLAB TO BE BENT INTO PARAPET. BARS IN BOTTOM SLAB TO BE BENT INTO TOEWALL.

BEND BARS C THAT DO NOT EXTEND FULL WIDTH. BARS IN TOP SLAB TO BE BENT INTO PARAPET. BARS IN BOTTOM SLAB TO BE BENT INTO TOEWALL.

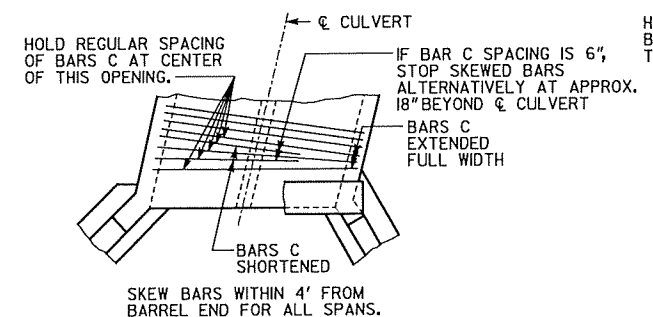
DOUBLE AND TRIPLE 45° AND 60° SKEWED BOXES TO HAVE REINFORCING BENT AND HOOKED AS SHOWN FOR SINGLE SKEWED BOXES. BARS M AND U ARE SAME AS SHOWN FOR SINGLE SKEWED BOXES. BEND BARS M AND U IN BARREL SLABS INTO WINGWALL AS NECESSARY TO PROVIDE 2" CLEARANCE AT EACH END. BEND BARS M AND U IN BARREL TOEWALL INTO WING TOEWALL AS NECESSARY TO PROVIDE 2" CLEARANCE AT EACH END.

GENERAL NOTES

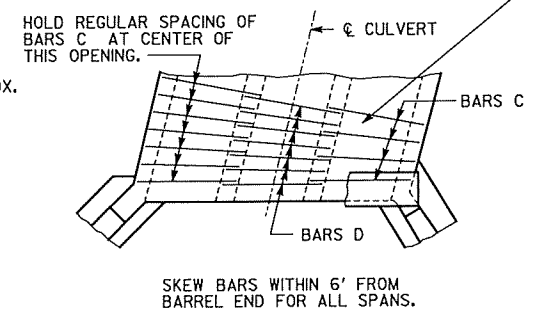
- SPECIFICATIONS: GEORGIA STANDARD, CURRENT EDITION & SUPPLEMENTS THERETO.
- THIS PLAN IS NOT COMPLETE IN ITSELF. FOR GENERAL NOTES, DETAILS AND DIMENSIONS NOT SHOWN, SEE "REINFORCED CONCRETE WINGWALLS, TOEWALLS, AND PARAPETS FOR CONCRETE BOX CULVERTS".
- QUANTITIES FOR BARREL REMAIN AS SHOWN ON REINFORCED CONCRETE BOX CULVERT STANDARDS.
- MAINTAIN 3" CLEARANCE ON REINFORCEMENT AT FACE OF CONCRETE CAST AGAINST EARTH. MAINTAIN 2" CLEARANCE ON ALL OTHER REINFORCEMENT.

DESIGN DATA

SPECIFICATIONS - AASHTO LRFD BRIDGE DESIGN SPECIFICATIONS, 7TH EDITION, 2014
LOADING - HL-93

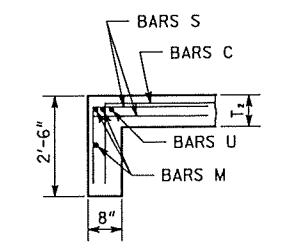


PART PLAN
DOUBLE 75° SKEW BOX

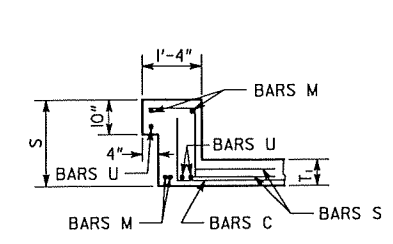


PART PLAN
TRIPLE 75° SKEW BOX

SHOWING ARRANGEMENT OF SKEWED BARS IN SLAB

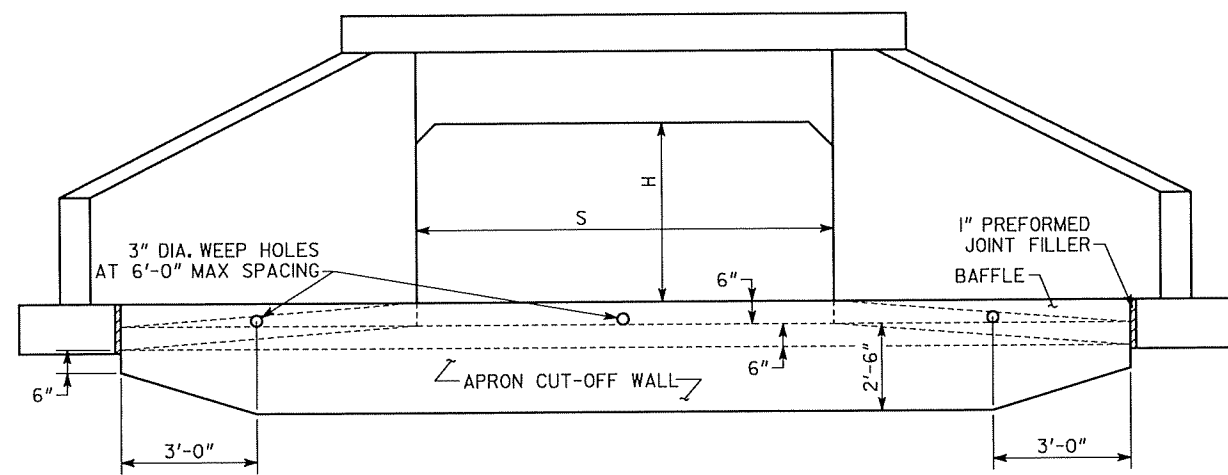


SECTION OF TOEWALL
SHOWING BEND ON BARS C FOR 60° AND 45° SKEWS



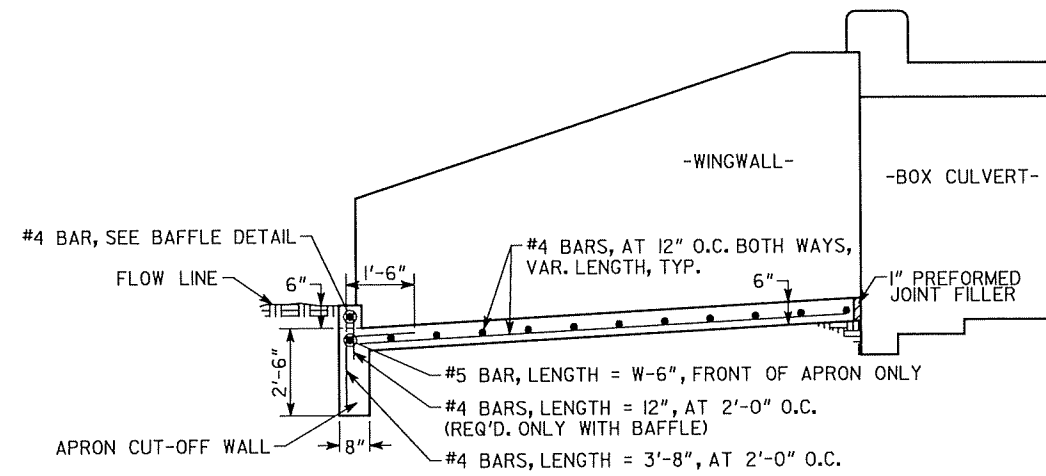
SECTION OF PARAPET
SHOWING BEND ON BARS C FOR 60° AND 45° SKEWS

DATE		DEPARTMENT OF TRANSPORTATION STATE OF GEORGIA	
REVISION		STANDARD REINFORCED CONCRETE SKEWED WINGWALLS, TOEWALLS AND PARAPETS FOR 75°, 60°, AND 45° SKEWS	
NO SCALE		SEPTEMBER 2017	
DES. WEI (SUBMITTED)	DRW. WEI (APPROVED)	TRA. (APPROVED)	CHK. YSK (APPROVED)
STATE DESIGN POLICY ENGINEER		CHIEF ENGINEER	
NUMBER		2405	
SHEET		1 OF 3	



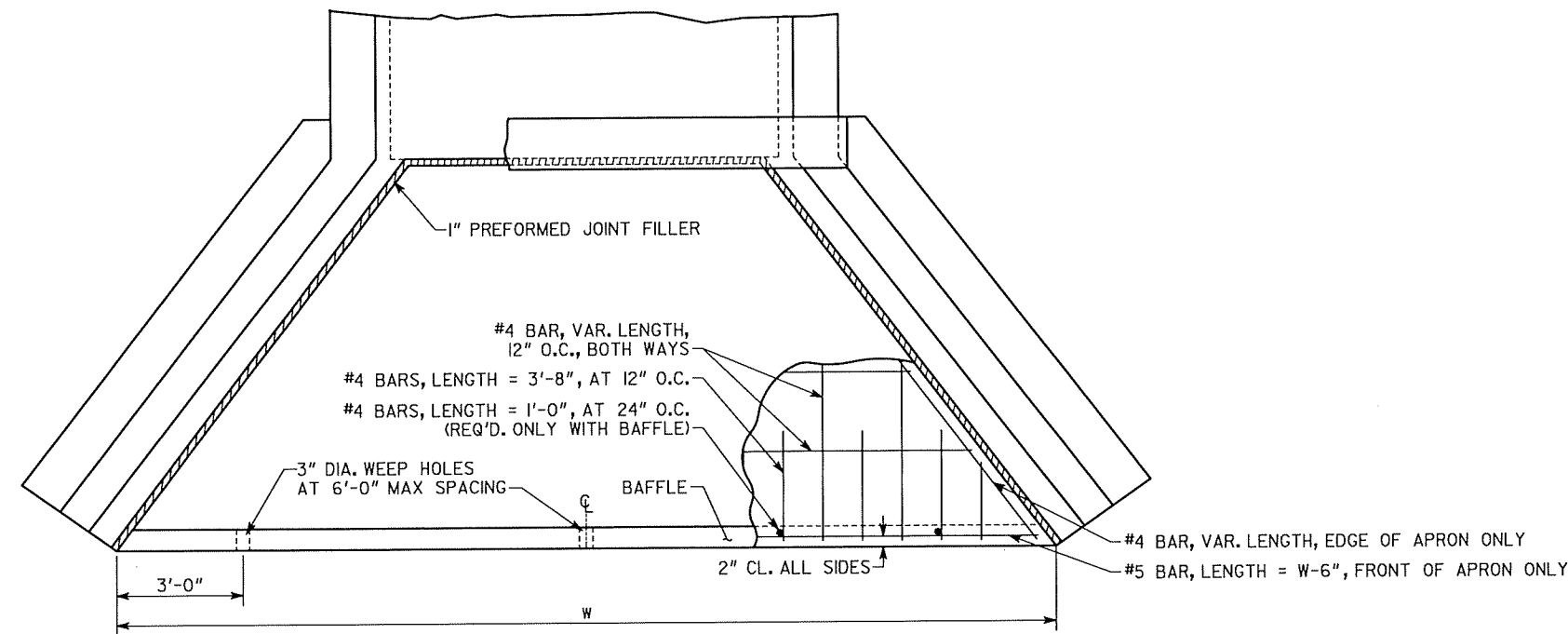
FRONT VIEW OF APRON

S = CLEAR SPAN OF BOX CULVERT
H = CLEAR HEIGHT (RISE) OF BOX CULVERT

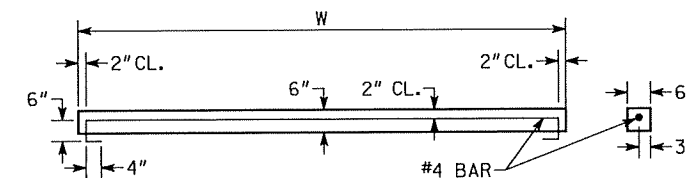


ELEVATION VIEW OF APRON

NOTE: 2" CL MIN. ON ALL SIDES UNLESS OTHERWISE NOTED.
SEE BOX CULVERT STANDARDS FOR DETAILS NOT SHOWN.
END OF EMBEDDED CULVERT APRON (NOT SHOWN) HAS THE SAME MINIMUM BACKFILL AS BARREL.



PLAN VIEW OF APRON



BAFFLE DETAIL

NOTE: CONSTRUCT BAFFLES FROM CLASS AA CONCRETE, MAY BE PRECAST OR CAST IN PLACE.
USE BAFFLES ON APRONS AT OUTLETS OF PIPES AND BOX CULVERTS AND IN PAVED DITCHES OR ELSEWHERE AT LOCATIONS SHOWN IN THE PLANS OR AS DIRECTED BY THE ENGINEER.

GENERAL NOTES

- 1) SPECIFICATIONS: GEORGIA STANDARD, CURRENT EDITION & SUPPLEMENTS THERETO.
- 2) CONCRETE APRONS AND BAFFLES ARE REQUIRED AT ALL OUTLETS OF ALL BOX CULVERT DRAINS. APRON IS NOT TO BE OMITTED AT OUTLETS UNLESS THE ENGINEER DETERMINES THAT BEDROCK WILL PREVENT EROSION AND MAKE THE APRON DIFFICULT TO CONSTRUCT. APRONS (WITHOUT BAFFLES) ARE USED AT INLETS ONLY IF PLANS SPECIFY.
- 3) DETAILS HERESHOWN APPLY TO LRFD STANDARD BOX CULVERTS.
- 4) ALL CONCRETE SHALL BE CLASS "AA" CONCRETE.
5. SEE SEPARATE STANDARDS FOR DETAILS OF BOX CULVERTS, WINGWALLS, PARAPETS, ETC.

DESIGN DATA

SPECIFICATIONS - AASHTO LRFD BRIDGE DESIGN SPECIFICATIONS, 7TH EDITION, 2014
LOADING - HL- 93.

DATE		DEPARTMENT OF TRANSPORTATION STATE OF GEORGIA	
REVISION		STANDARD	
		CONCRETE BOX CULVERT APRONS AND BAFFLES DETAIL	
		NO SCALE	SEPTEMBER 2017
DES. WEL	(SUBMITTED)	NUMBER	
DRW. EJC	STATE DESIGN POLICY ENGINEER	2406	
TRA.	(APPROVED) Margaret B. Pirelo	SHEET 1 OF 2	
CHK. EJC	CHIEF ENGINEER		

Notes:

TRAFFIC CONTROL:

Shall be bid on a lump sum basis and shall include all signing according to the MUTCD manual necessary for controlling traffic for the life of the Project and will also include a road closure for the life of the Project.

GRADING COMPLETE:

All items shall meet all GDOT 2021 standard specifications and shall be paid on a lump sum basis when completed according to the 2021 Georgia DOT standard specifications and will include bridge removal. and all work to complete the project including channel excavation. A minimum of 18 inches of fill dirt shall be placed on top of the culvert concrete before any base and pavement is placed.

BARRIER FENCE (ORANGE) 4 FT

Orange fencing to be placed in areas necessary for safety. This item to bid on a linear feet basis.

FOUNDATION BACKFILL MATERIAL TP II:

This material shall be placed according the GDOT 2021 Standard Specifications in all area's necessary underneath footings and foundations. This material will be paid on a cubic yard basis for material used on this project.

CLASS AA CONCRETE:

Concrete used in the construction of a triple 7'x6'x46' box culvert on a 60-degree skew shall be paid for on a cubic yard basis and shall be done in accordance with the DOT standards included in the project plans.

BAR REINFORCING STEEL:

All steel used on this project shall be in accordance with the DOT standards included in the project plans and shall be paid on a per pound basis for all steel required on this triple 7'x6'x46' box culvert.

GRADED AGGR BASE AND PAVING

The typical section for base and paving will be as follows:

Graded Agg Base	6" Compacted
19mm Asphalt Concrete	4" Compacted
12.5 mm Asphalt Concrete	2" Compacted

Each item will be paid for on a per ton basis. Paving areas shall be 20' in width and shall extend the project limits which is a total of 200' long.

EROSION CONTROL

This item is being bid on a lump sum basis and will include all items necessary to control erosion on the project which includes, but not limited to, Installation and maintenance of type C silt fence, Stone dumped rip rap including some type 1 36" and surge stone, mulch, permanent grassing with lime and fertilizer, construct and maintain a construction exit and place any filter fabric needed on the project.

Testing:

Any testing required will be the responsibility of the contractor.



Know what's below.
Call before you dig.