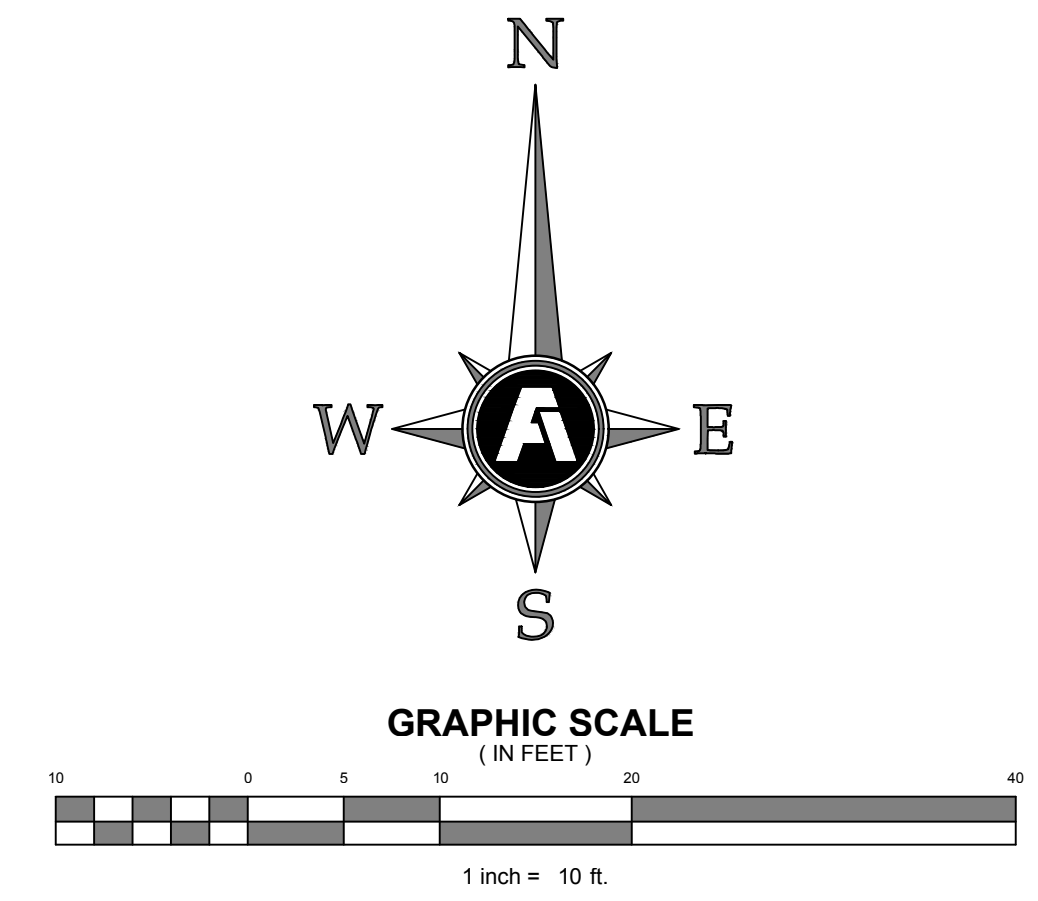
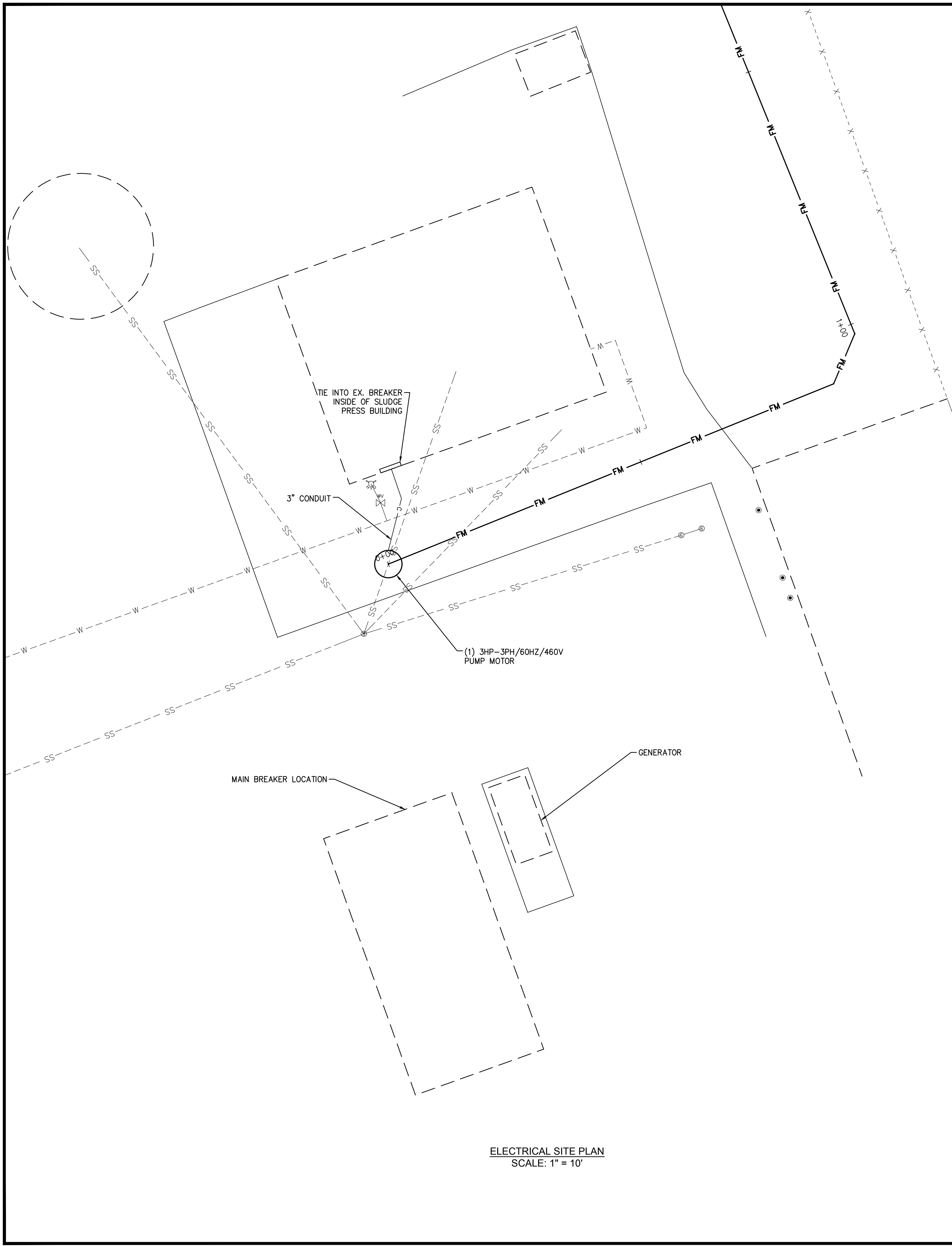
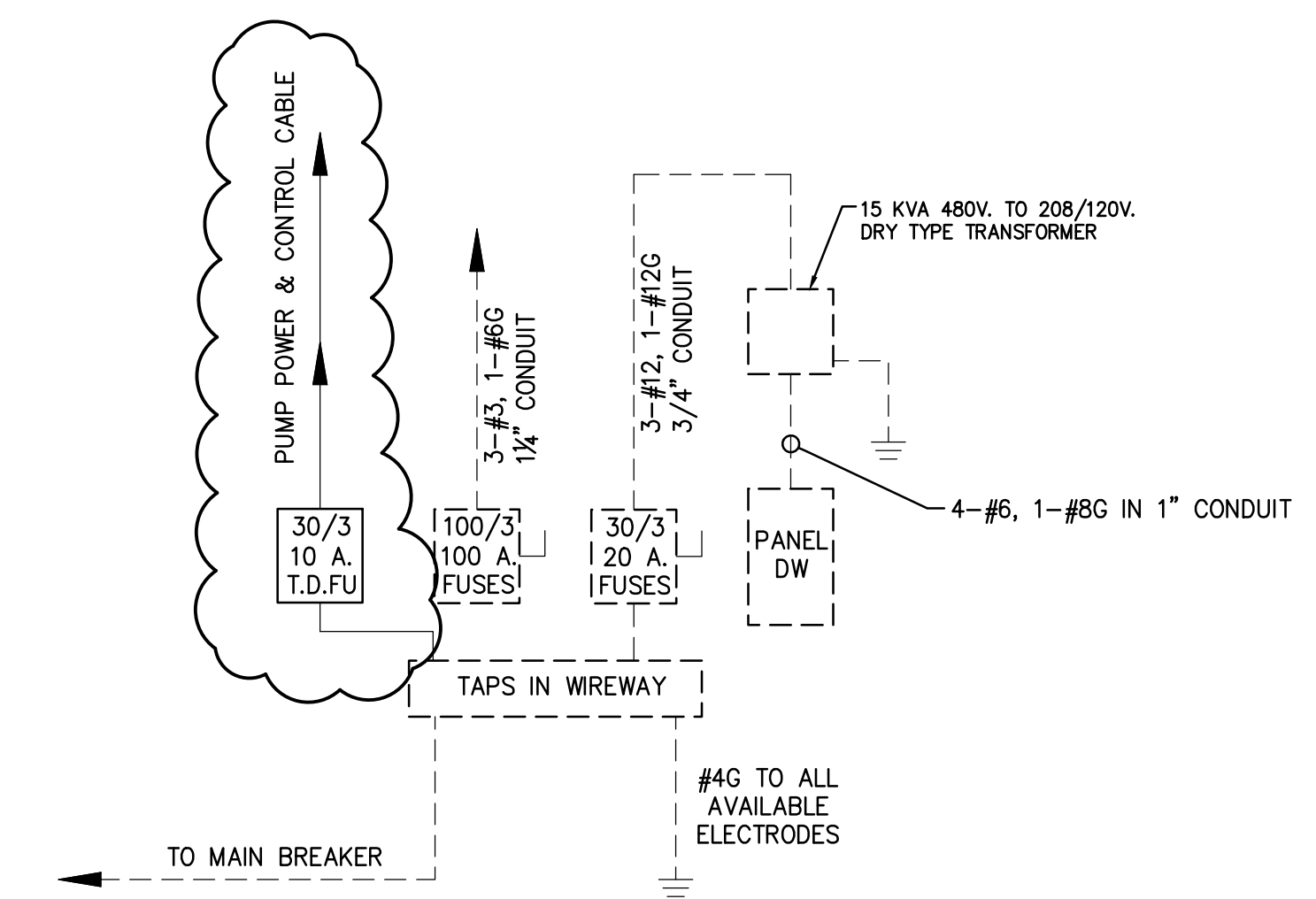


Copyright 2017 Fisher & Arnold, Inc., all rights reserved
 Filename: W:\10272\CAD\Plans\Electrical Site Plan.dwg
 Plot Date: Thursday, June 08, 2017 4:08 pm
 By: ccompenter



- GENERAL CONSTRUCTION NOTES**
- CONTRACTOR SHALL COORDINATE THE EXACT LOCATION OF ALL UNDERGROUND CONDUITS AND DUCTBANKS TO AVOID INTERFERENCES WITH UNDERGROUND PIPING.
 - EQUIPMENT LOCATIONS AND PHYSICAL SIZES ARE SHOWN APPROXIMATELY. COORDINATE ACTUAL LOCATIONS WITH OTHER TRADES TO PROVIDE ACCESS AND WORKING SPACE/CLEARANCE PER NEC REQUIREMENTS.
 - RACEWAY ROUTING IS SHOWN IN SCHEMATIC FORM AND DOES NOT NECESSARILY REPRESENT PHYSICAL ROUTING. ACTUAL ROUTING SHALL BE DETERMINED BY CONTRACTOR TO AVOID BUILDING OBSTRUCTIONS AND INTERFERENCE WITH WORK OF OTHER TRADES.
 - ALL ELECTRICAL EQUIPMENT AND CABLES, CONDUIT, AND ACCESSORIES REQUIRED FOR THEIR INSTALLATION SHALL BE PROVIDED BY THE CONTRACTOR.
 - CONTRACTOR SHALL PROVIDE ALL SERVICES AND ACCESSORIES, INCLUDING FINAL CONNECTIONS TO ALL EQUIPMENT.
 - THE ELECTRICAL CONTRACTOR SHALL BE RESPONSIBLE FOR PROVIDING ALL CONTROL WIRING IN RACEWAY, TERMINATIONS, LABELING, AND TESTING OF CONTROL CABLING FOR COMPLETE OPERATIONAL CONTROL SYSTEM.
 - THE ELECTRICAL CONTRACTOR SHALL BE RESPONSIBLE FOR FURNISHING AND INSTALLING ELECTRICAL EQUIPMENT AND CONTROL PANELS AS REQUIRED FOR THE PROJECT UNLESS OTHERWISE NOTED.
 - ALL WORK SHALL BE INSTALLED PER SPECIFICATIONS AND LATEST EDITION OF THE NATIONAL ELECTRICAL CODE. THE CONTRACTOR SHALL COORDINATE WORK INSPECTIONS REQUIRED BY SPECIFICATIONS WITH THE UTILITY AND THE AUTHORITY HAVING JURISDICTION PRIOR TO COVERING INSTALLED WORK.
 - ALL CONDUIT SHALL BE 2" SCHEDULE 40 PVC UNLESS OTHERWISE NOTED.
 - ALL ENCLOSURES SHALL BE HINGED NEMA 3R OR BETTER. COLOR TO BE ANSI 61 GRAY.
 - ALL EQUIPMENT TO BE RATED FOR 600 VAC.



Voltage 120/208 Amps 100 Main 60/3 MCB		PANEL DW										Job Name: SCOTT'S CREEK WWTP		
		A.T.C. 10,000												
Load	A	B	C	BKR NO	A	B	C	A	B	C	Load	A	B	C
LIGHTS	1000			20/1	1	2	20/1				RECEPTACLES			
LIGHTS		1060		20/1	3	4	20/1				RECEPTACLES			
UNIT HEATER	2500		2500	30	5	6	20/1				EXH. FAN		800	
UNIT HEATER		2500		2	7	8	20/1	1000			SPARE			
			2500	30	9	10	20/1		1000		SPARE			
PROVISION				2	11	12	20/1				SPARE			
PROVISION				13	A	14					PROVISION			
PROVISION				15	B	16					PROVISION			
PROVISION				17	C	18					PROVISION			
SAFE SMART CONTROL				19	A	20					PROVISION			
				21	B	22								
				23	C	24								
				25	A	26								
				27	B	28								
				29	C	30								
				31	A	32								
				33	B	34								
				35	C	36								
				37	A	38								
				39	B	40								
				41	C	42								
Totals	3500	3560	5000					1360	1360	1800	Totals			
Total Load 57 A												A: 4880		
												B: 4620		
												C: 6800		

FISHER ARNOLD
ENGINEERING INTEGRATION

9180 Crestwyn Hills Drive | Memphis, Tennessee 38125-8538
901.748.1811 | Fax: 901.748.3115 | www.fisherarnold.com

CITY OF LAKELAND
SCOTT'S CREEK WWTP
SLUDGE PRESS PUMP STATION
LAKELAND, TENNESSEE

Rev.	Date	Revision Description

Issue Date: June 2, 2017
 Project No: A10272
 Drawn By: CCC
 Checked By: JTV
 Sheet Title:
ELECTRICAL SITE PLAN

Sheet Number:
E.1.1