

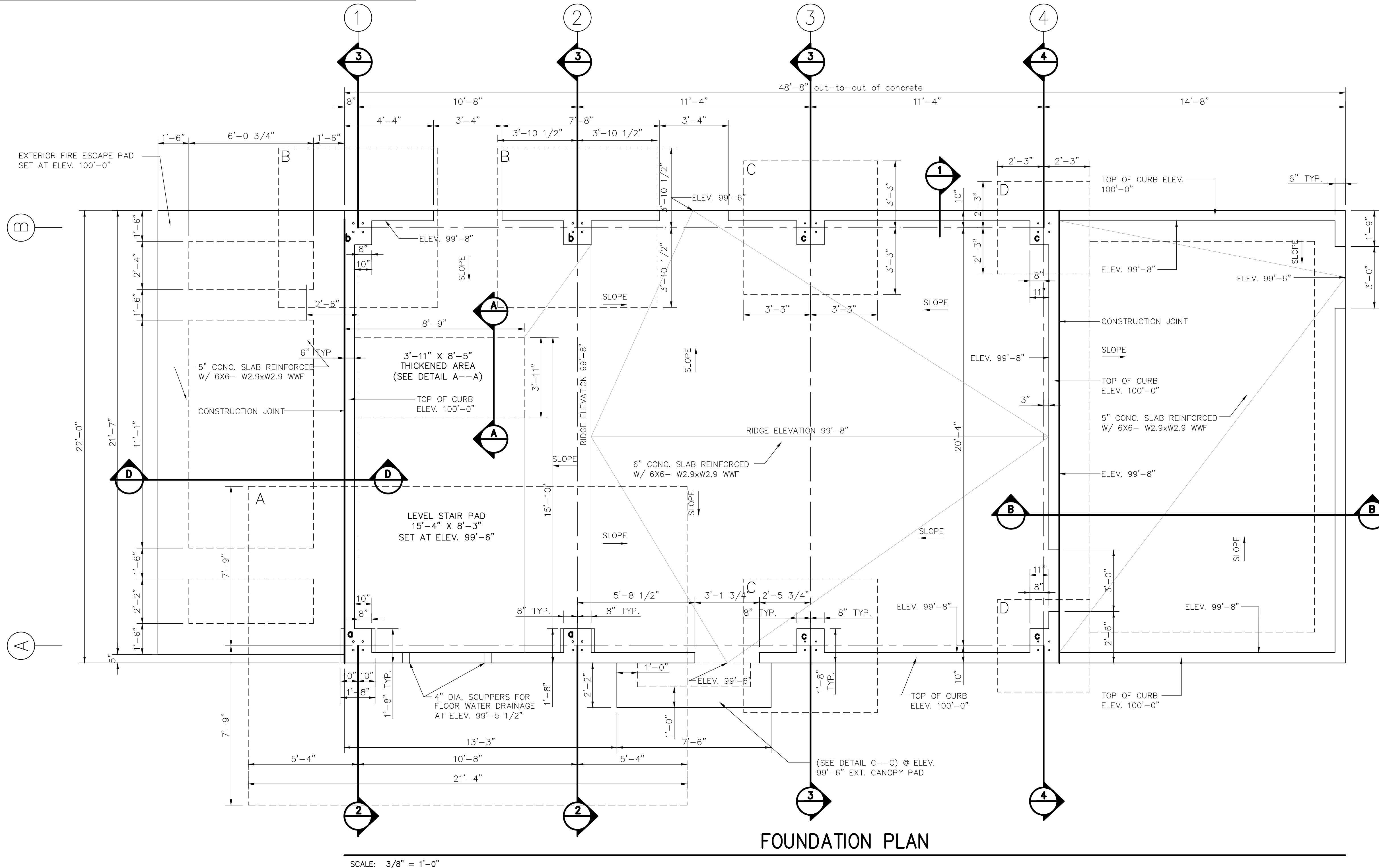
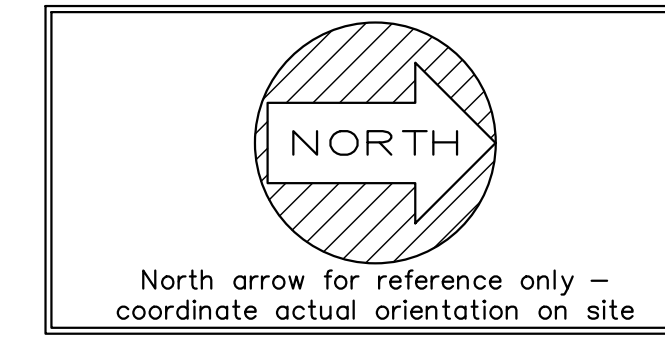
CONCRETE & REINFORCING STEEL SPECIFICATIONS

- SCHEDULE OF CONCRETE MIX REQUIREMENTS:

USE	28 DAY STRENGTH	SLUMP (INCH)	MAX AGGREGATE (INCH)
FLOOR SLABS	3000 PSI	3"	3/4"
WALLS & PIERS	3000 PSI	5"	3/4"
FOOTINGS/MATS	3000 PSI	5"	1 1/2"
- CONCRETE EXPOSED TO WEATHER (OUTSIDE SLABS, FLOOR SLABS, CURBS, ETC.) SHALL CONTAIN 4 TO 7 PERCENT AIR BY VOLUME
- NOT USED.
- CEMENT SHALL CONFORM TO ASTM C150, TYPE II; CONCRETE SHALL CONFORM TO ASTM C94.
- AGGREGATE SHALL CONFORM TO ASTM C-33.
- REINFORCING STEEL SHALL CONFORM TO ASTM A615-GRADE 60.
- WELDED WIRE FABRIC SHALL CONFORM TO ASTM A185.
- LAP ALL HORIZONTAL REINFORCING #6 AND GREATER 6'-0" AT SIDE LAPS AND 1'-4" (HOOK) AT CORNERS, MIN. LAP ALL HORIZONTAL REINFORCING #5 AND LESS 2'-6" AT SIDE LAPS AND 1'-0" (HOOK) AT CORNERS, MIN. LAP ALL WELDED WIRE FABRIC 8" AT SIDE AND END LAPS.
- SITE SHALL BE PREPARED AS RECOMMENDED IN SOIL REPORT PREPARED BY NOVA ENGINEERING & ENVIRONMENTAL LLC. OF PENSACOLA, FL ON DEC. 27, 2021. FOUNDATION IS DESIGNED FOR A SOIL BEARING OF 1,500 PSF. PLEASE NOTIFY PROFESSIONAL IN CHARGE OF THE SOIL REPORT OF ANY UNUSUAL SOIL CONDITIONS.
- COMPACT FILL UNDER FLOOR SLABS 98% TO DENSITY PLACE 6 INCHES OF STRUCTURAL FILL UNDER ALL SLABS/GRADE BEAMS. REMOVE ALL MATERIAL UNDER THE FOOTINGS THAT DO NOT COMPLY WITH A SOIL BEARING PRESSURE OF 1,500 PSF. REPLACE THIS MATERIAL WITH STRUCTURAL FILL UNDER ALL FOOTINGS (98% COMPACTION) IN 12" MAXIMUM LIFTS. NOTE PER SECTION 7.1.1 OF THE SOILS REPORT, EXISTING TOP LAYER OF SILTY SANDS CAN BE USED AS STRUCTURAL FILL.
- PLACE CONTROL JOINTS AT 15'-0" O.C. MAXIMUM IN EACH DIRECTION FOR ALL FLOOR SLABS
- FIBERMESH SHOULD BE INCORPORATED IN ALL CONCRETE FLOOR SLABS TO MINIMIZE THERMAL CRACKING.

MARK	SIZE	TOP STEEL		BOTTOM STEEL		PIER DOWELS
		LONGITUDINAL	TRANSVERSE	LONGITUDINAL	TRANSVERSE	
A	21'-4" X 15'-6" X 1'-6"	18 - #5'S	30 - #5'S	18 - #5'S	30 - #5'S	4 - #7'S
B	7'-9" X 7'-9" X 1'-6"	9 - #5'S	9 - #5'S	9 - #5'S	9 - #5'S	4 - #6'S
C	6'-6" X 6'-6" X 1'-6"	7 - #5'S	7 - #5'S	7 - #5'S	7 - #5'S	4 - #6'S
D	4'-6" X 4'-6" X 1'-6"	5 - #5'S	5 - #5'S	5 - #5'S	5 - #5'S	4 - #6'S

- NOTES:
- TOP OF CURB ELEVATION IS 100'-0". TOP ELEVATION OF ALL FOOTINGS IS 98'-0".
 - COORDINATE PLAN ELEVATIONS WITH SITE ELEVATIONS.



SCALE: 3/8" = 1'-0"

FOUNDATION PLAN

REVISIONS

NO.	DESCRIPTION	DATE	BY

Engineer: Steven P. Westro
 Address: 314 Wilburn Road, Sun Prairie, WI 53590
 Phone: 608-327-4100
 Florida License #: PE 56328

THIS DRAWING AND ALL PARTS THEREOF IS THE EXCLUSIVE PROPERTY OF FIRE FACILITIES, INC., 314 WILBURN ROAD, SUN PRAIRIE, WI 53590
 OFFICE: (608) 327-4100 FAX (608) 834-1843
 AND MAY NOT BE REPRODUCED IN WHOLE OR PART WITHOUT WRITTEN PERMISSION.

FIRE FACILITIES
 STEEL FIRE TRAINING TOWERS

FIRE FACILITIES, INC.
 314 WILBURN ROAD, SUN PRAIRIE, WI 53590
 OFFICE: (608) 327-4100 FAX: (608) 834-1843
 TOLL FREE: (800) 929-3726 TOLL FREE FAX: (866) 639-7012
 WWW.FIREFACILITIES.COM; INFO@FIREFACILITIES.COM

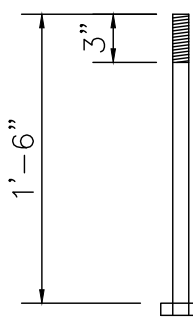
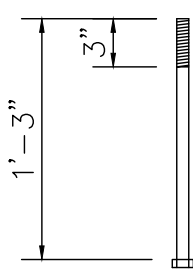
Lab Description: **WESCO MODEL FF-4**
 CUSTOM CRESTVIEW, FL

Sheet Title: **FOUNDATION DESIGN**

Date: JANUARY 4, 2022
 Drawn by: DWK
 Checked by:
 Scale: SHOWN
 Order No. FTE-796 / 244368
 Sheet No.

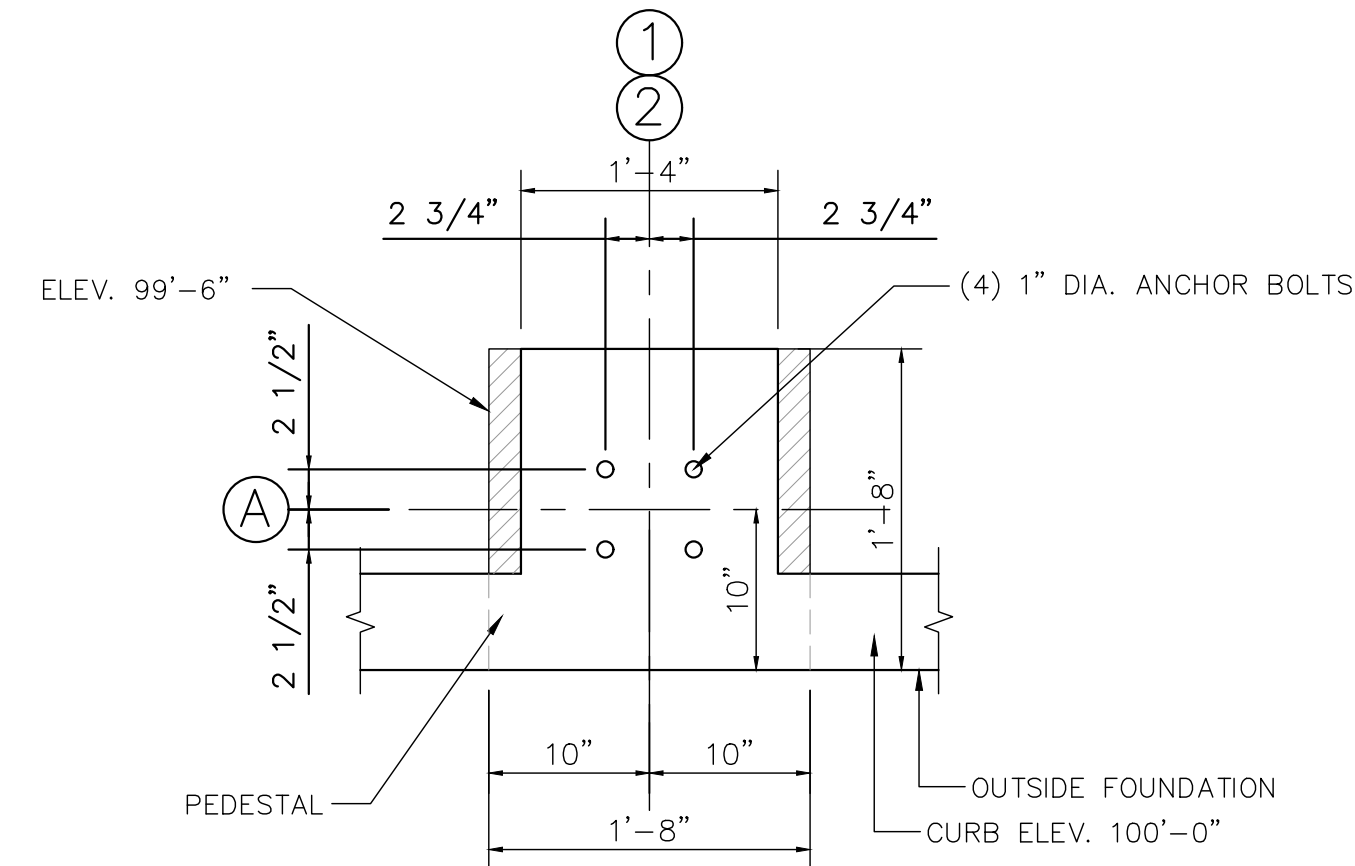
3/4" DIA. F1554 (GRADE 36) HEX HEAD BOLT

scale: 1" = 1'-0"



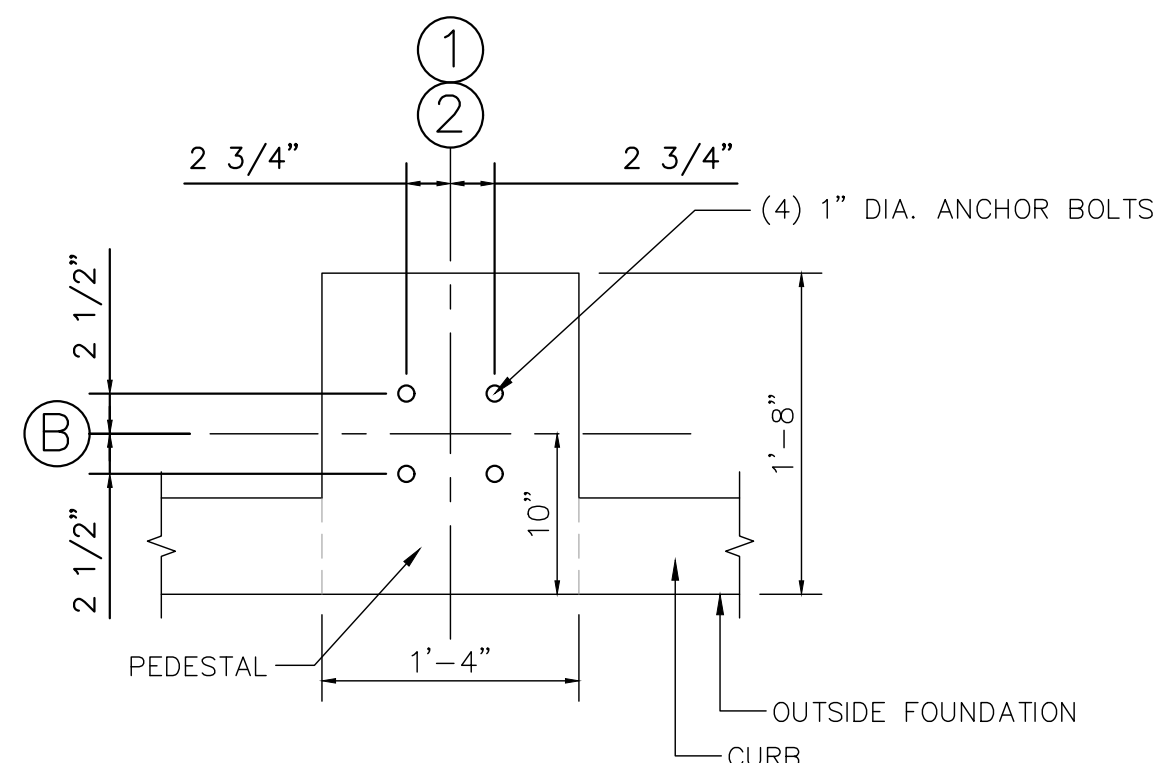
1" DIA. F1554 (GRADE 36) HEX HEAD BOLT

scale: 1" = 1'-0"



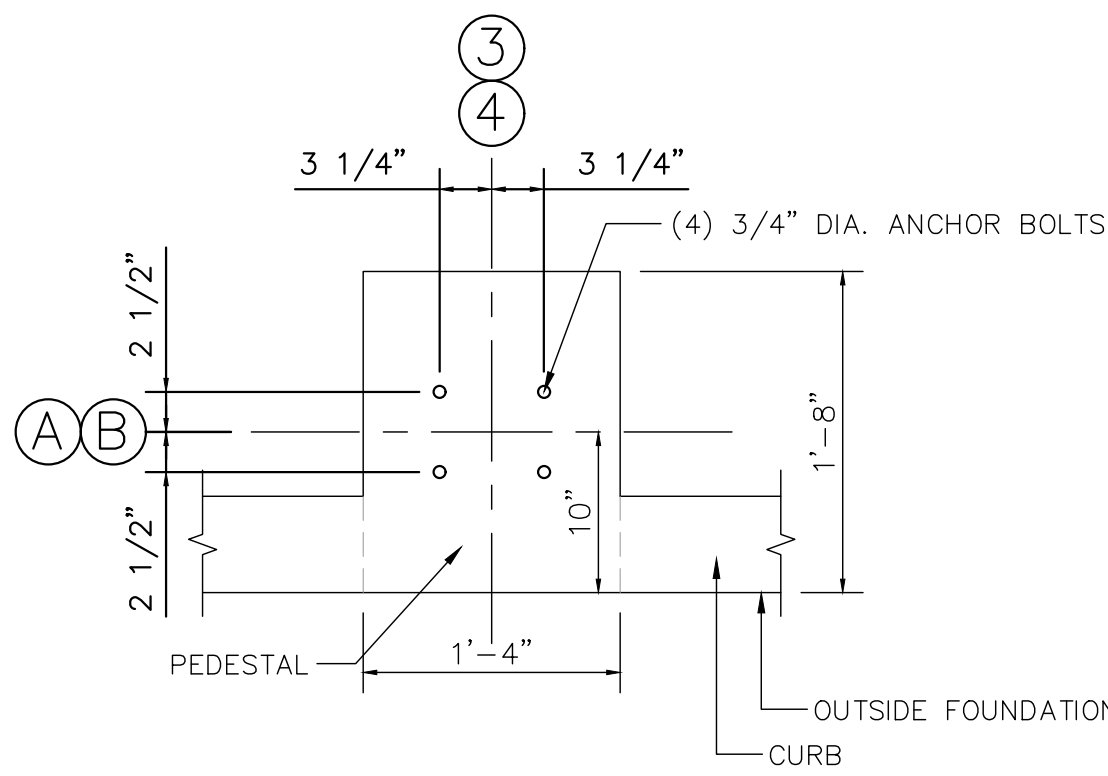
a BOLT SECTION PATTERN

scale: 1" = 1'-0"



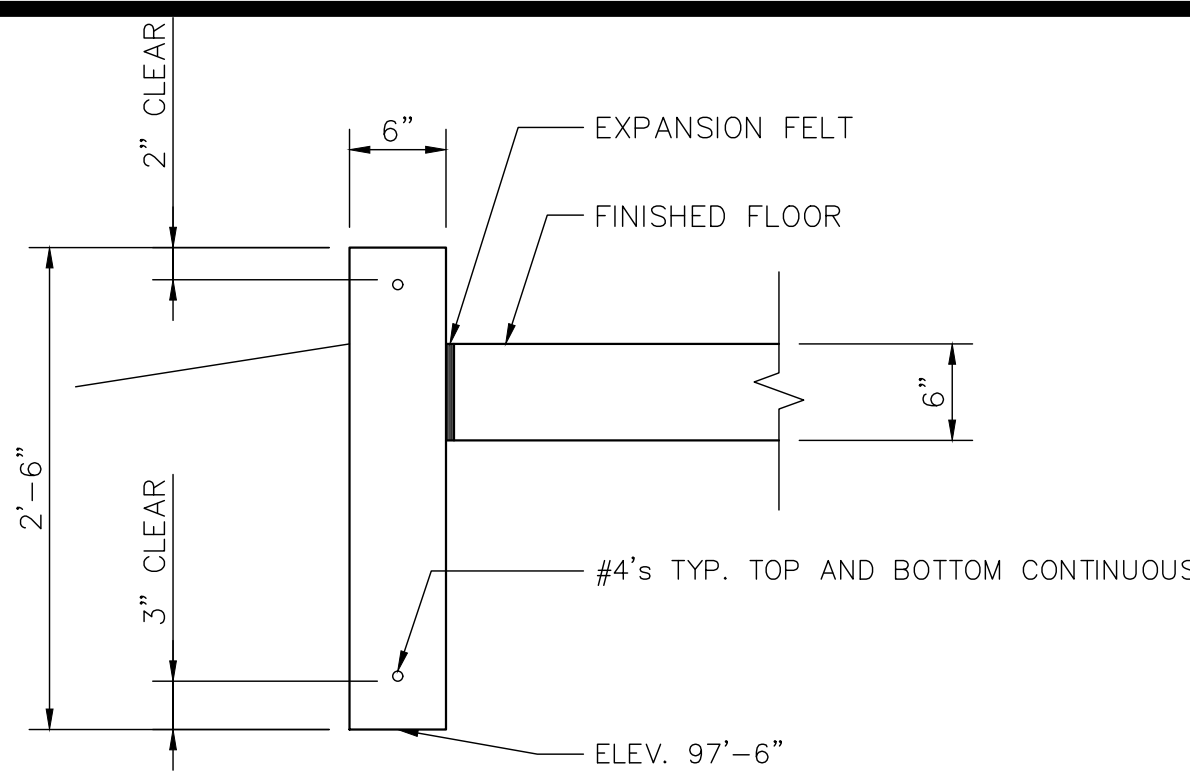
b BOLT SECTION PATTERN

scale: 1" = 1'-0"



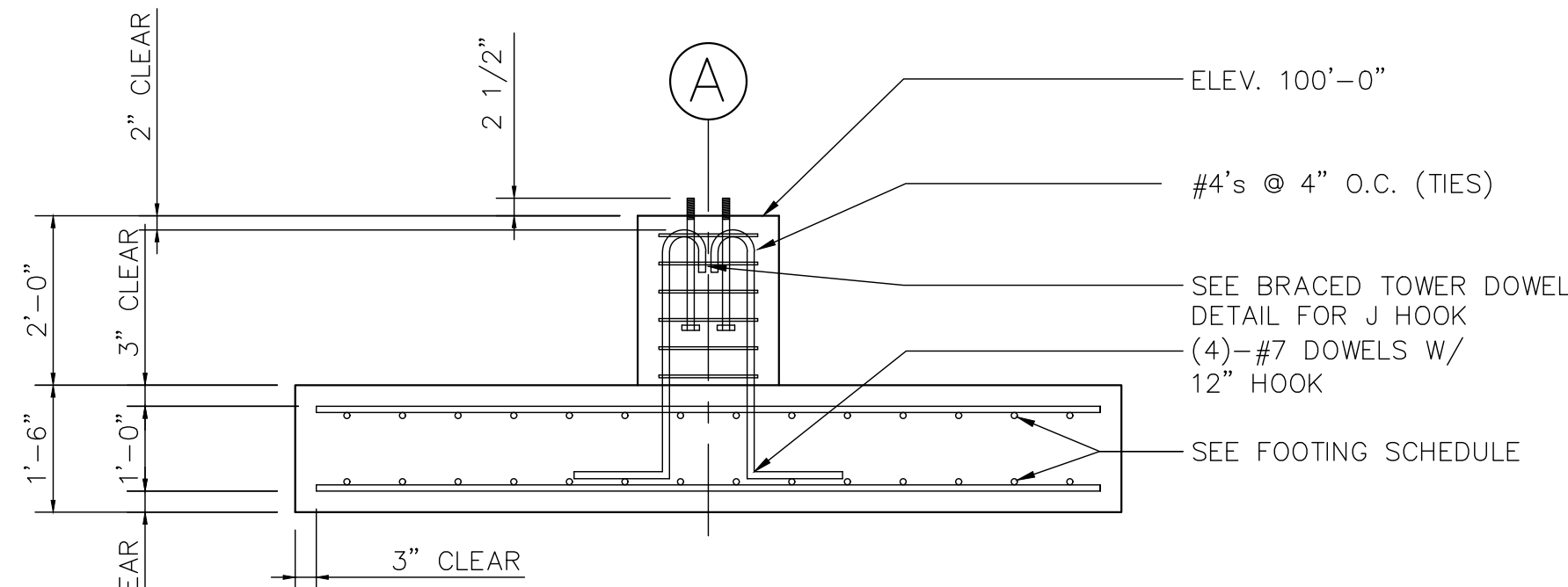
c BOLT SECTION PATTERN

scale: 1" = 1'-0"



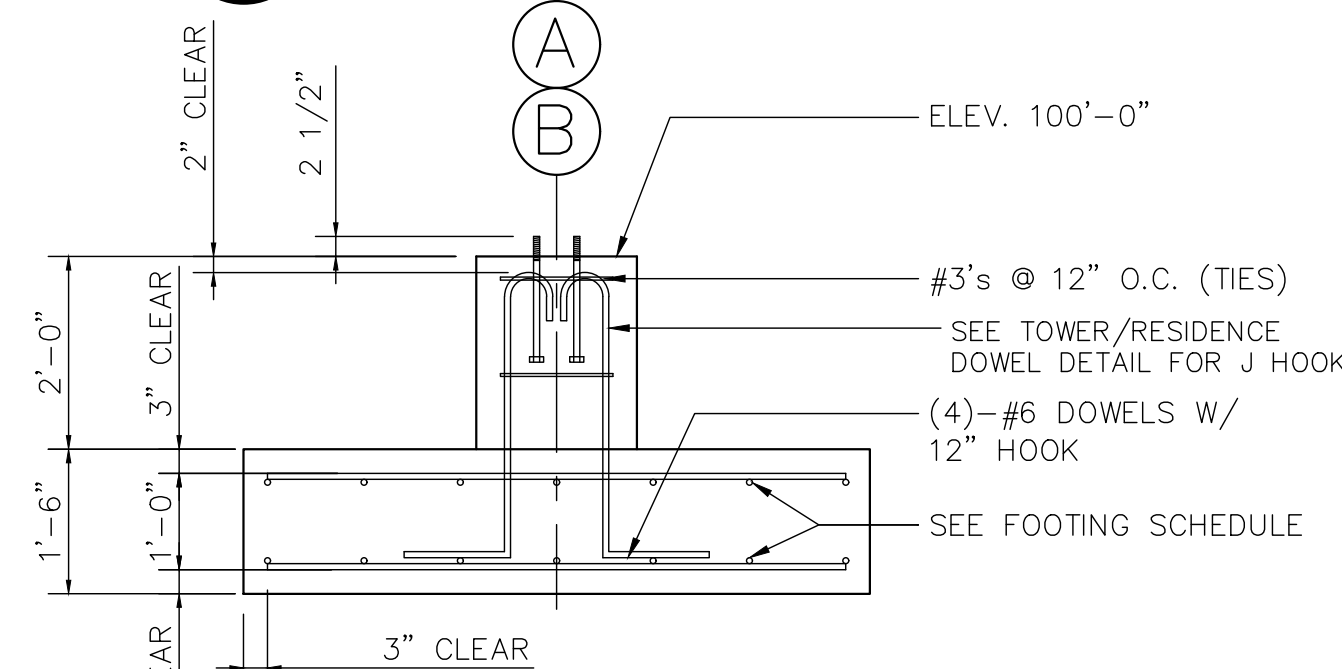
1 TYPICAL WALL SECTION

scale: 1" = 1'-0"



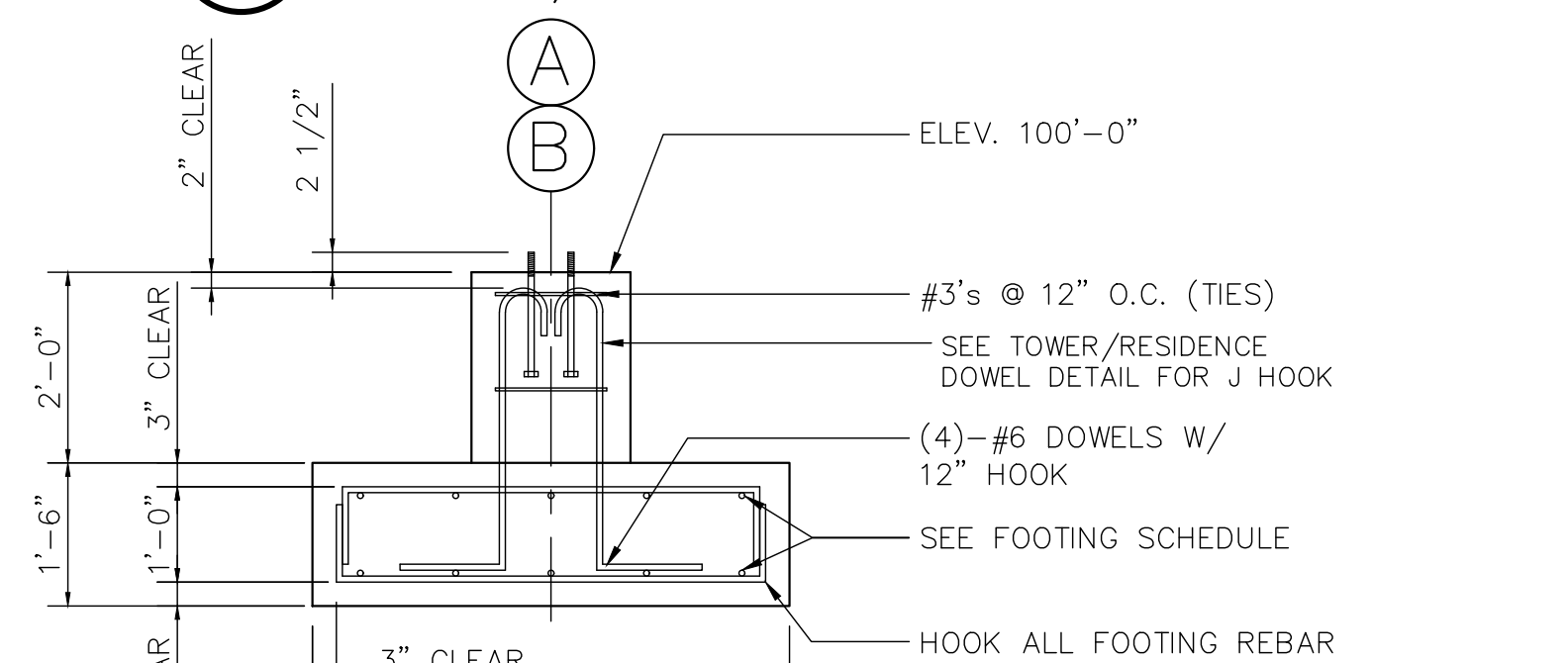
2 SECTION THROUGH PIER

scale: 1/2" = 1'-0"



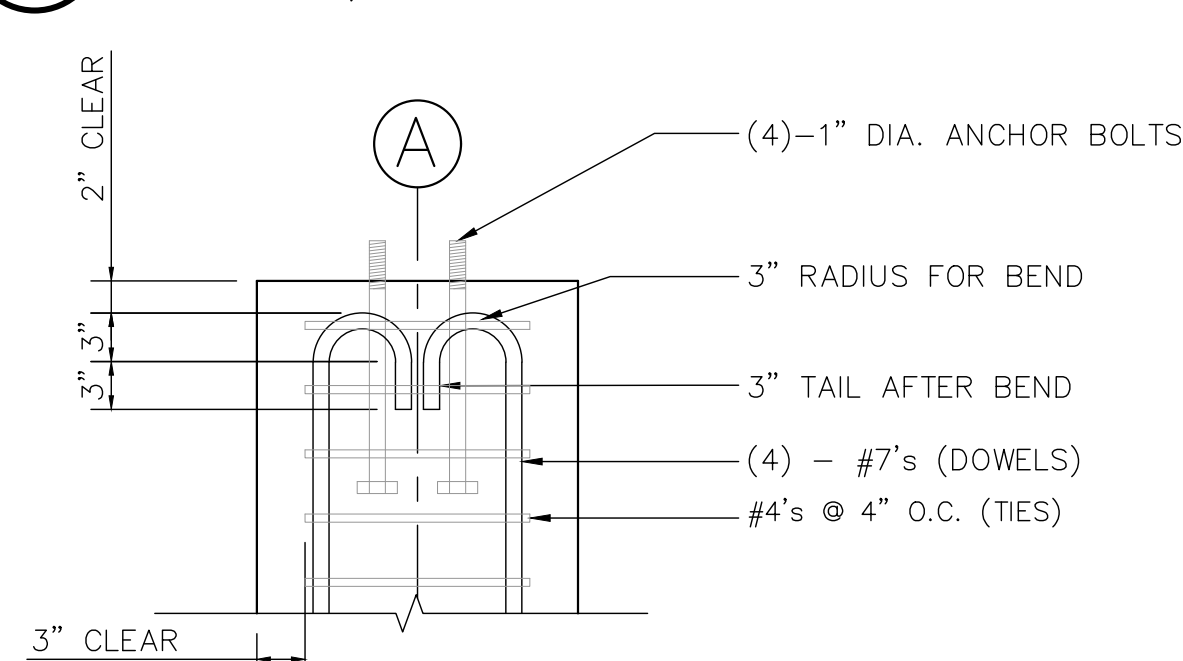
3 SECTION THROUGH PIER

scale: 1/2" = 1'-0"



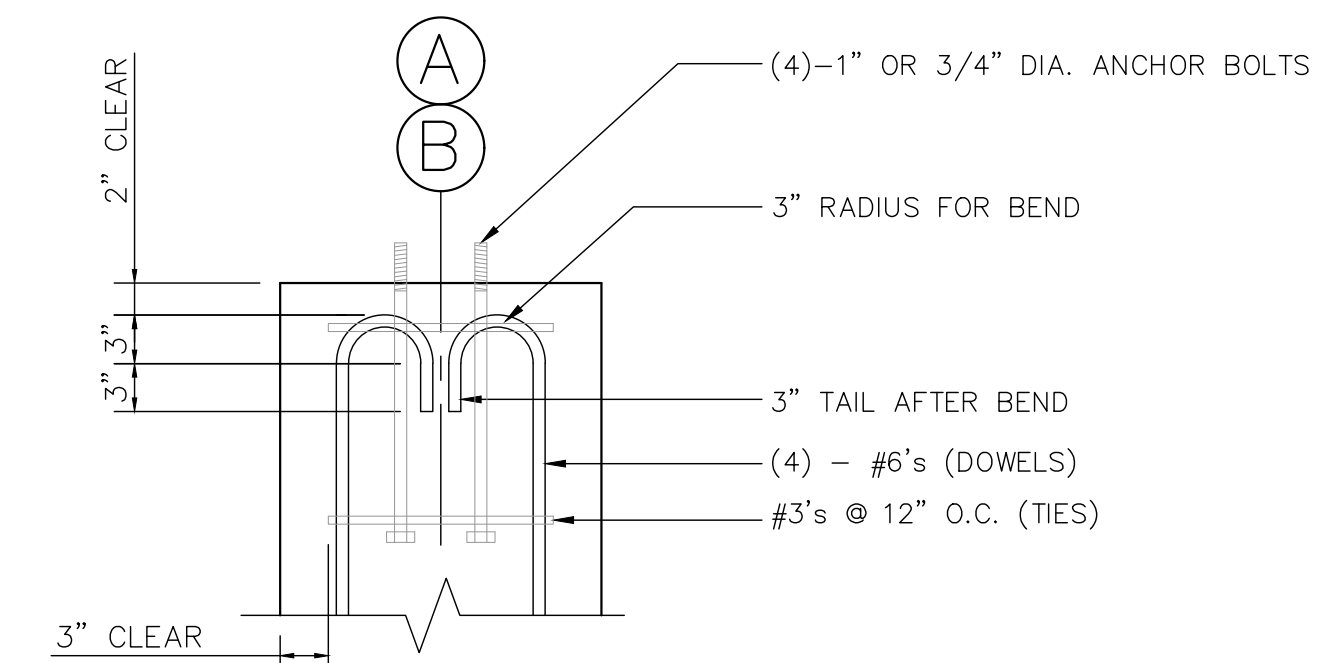
4 SECTION THROUGH PIER

scale: 1/2" = 1'-0"



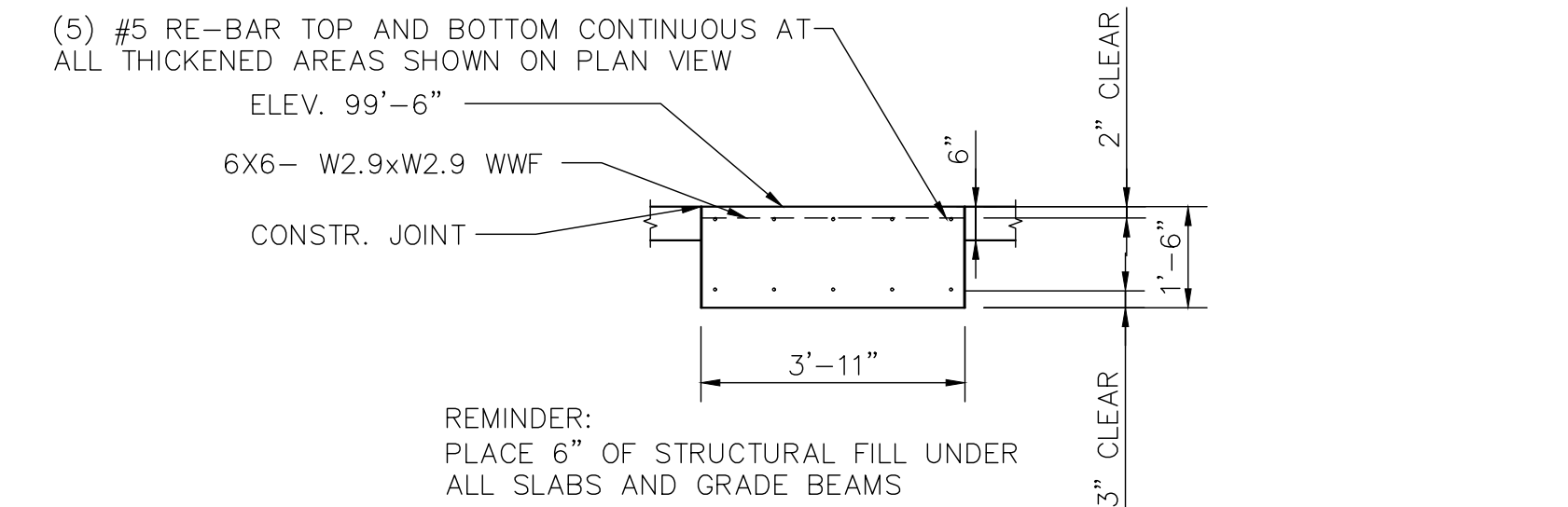
BRACED TOWER DOWEL DETAIL FOR J HOOK

scale: 1" = 1'-0"



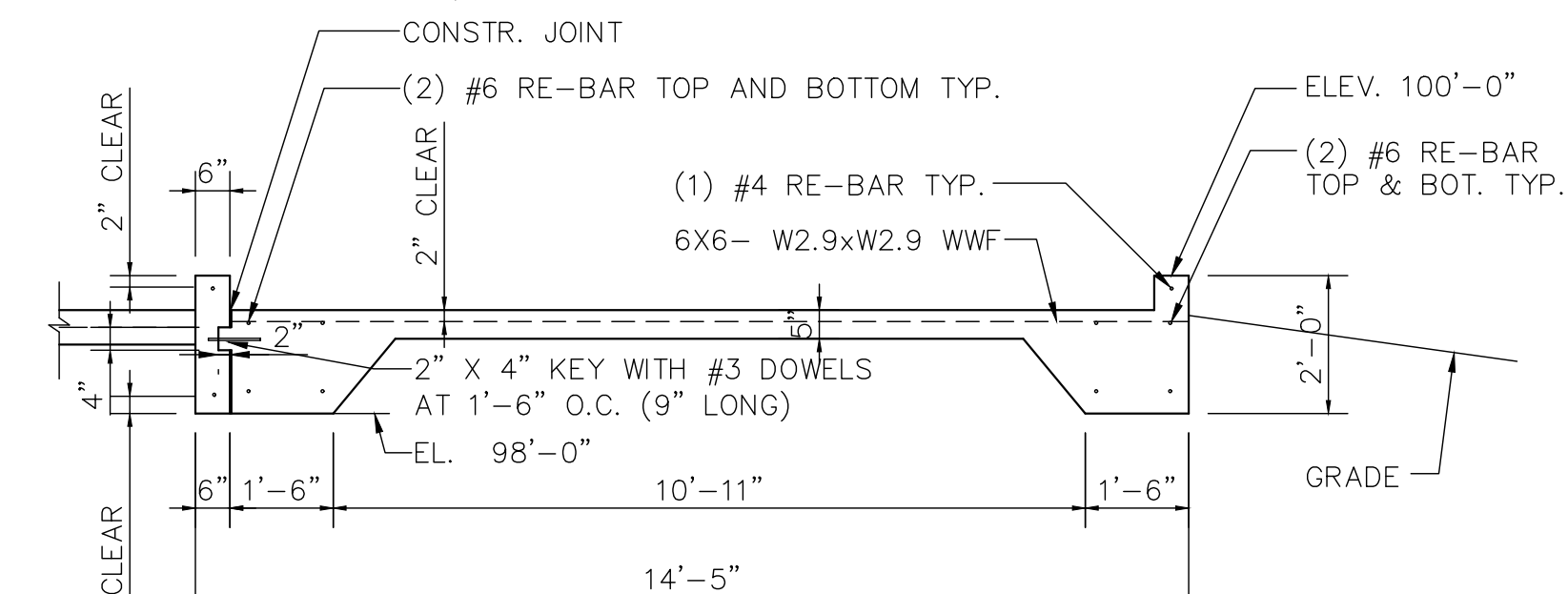
TOWER / RESIDENCE DOWEL DETAIL FOR J HOOK

scale: 1" = 1'-0"



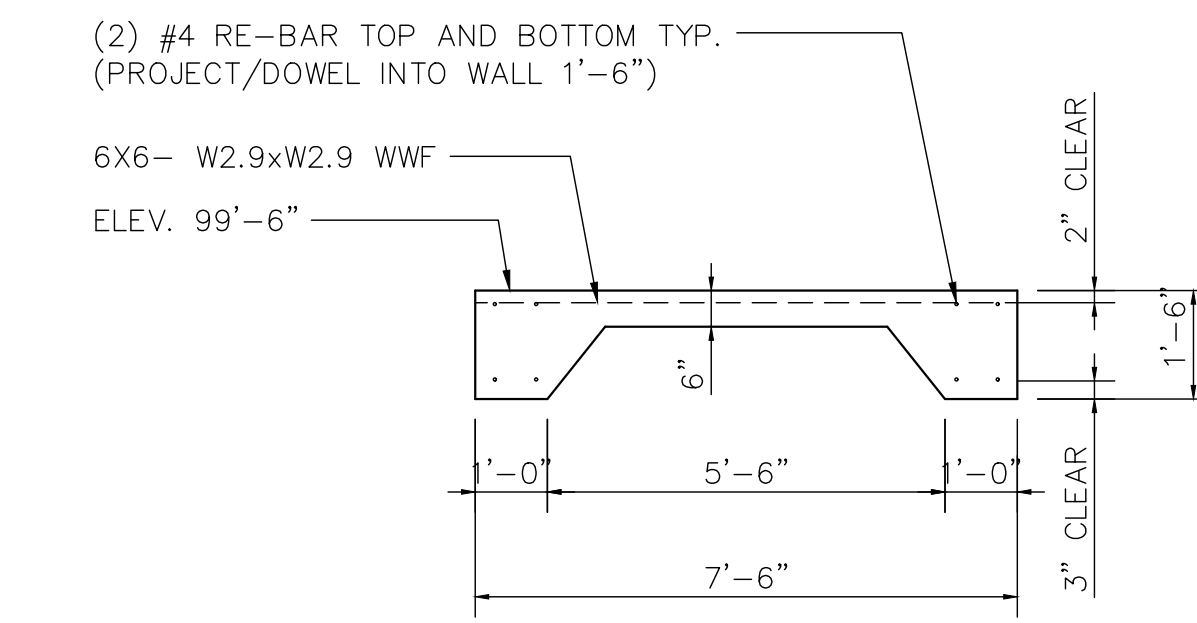
TYPICAL SECTION A--A

scale: 3/8" = 1'-0"



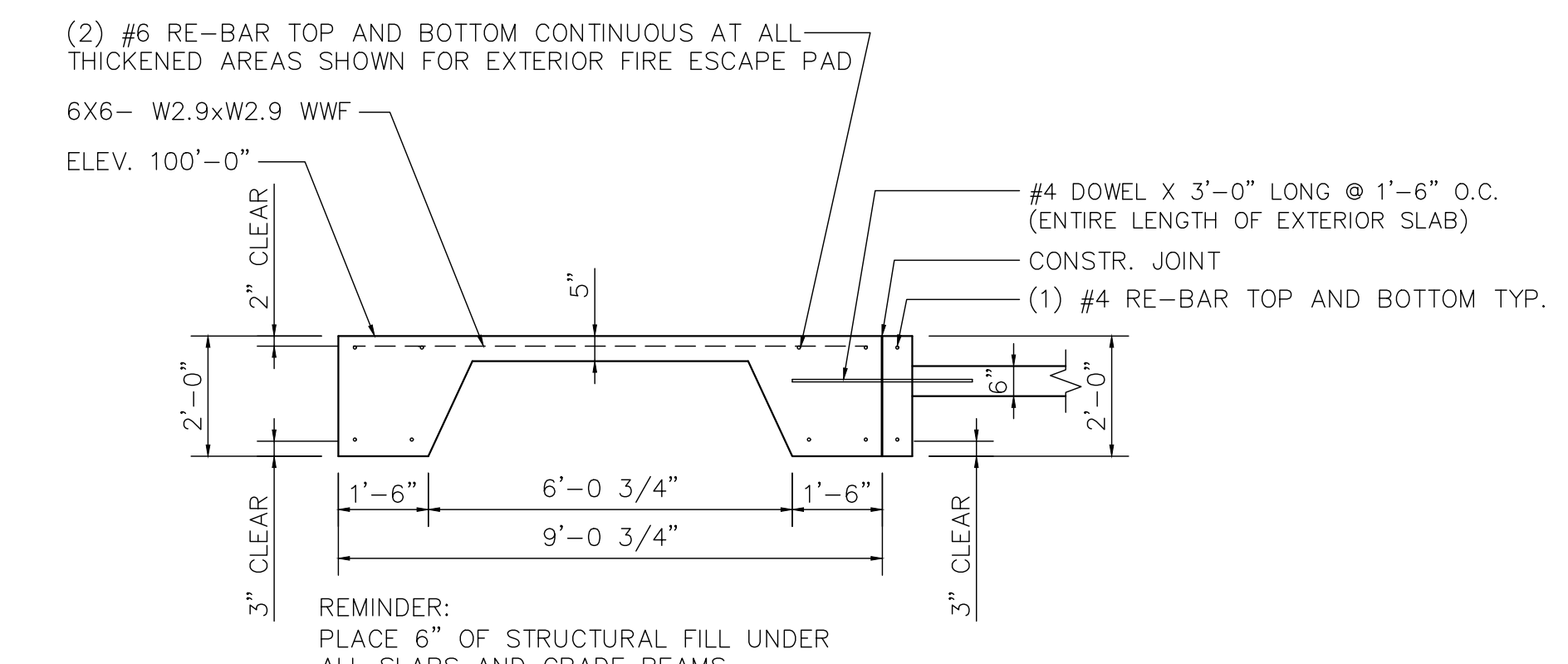
TYPICAL SECTION B--B

scale: 3/8" = 1'-0"



TYPICAL SECTION C--C

scale: 3/8" = 1'-0"



TYPICAL SECTION D--D

scale: 3/8" = 1'-0"

REVISIONS	by

Engineer: Steven P. Westro
 Address: 314 Wilburn Road, Sun Prairie, WI 53590
 Phone: 608-929-3726
 Florida License #: FE 56328

THIS DRAWING AND ALL PARTS THEREOF IS THE EXCLUSIVE PROPERTY OF FIRE FACILITIES, INC.
 314 WILBURN ROAD, SUN PRAIRIE, WI 53590
 OFFICE: (608) 327-4100 FAX: (608) 834-1843
 AND MAY NOT BE REPRODUCED IN WHOLE OR PART WITHOUT WRITTEN PERMISSION.

FIRE FACILITIES
STEEL FIRE TRAINING TOWERS

FIRE FACILITIES, INC.
 314 WILBURN ROAD, SUN PRAIRIE, WI 53590
 OFFICE: (608) 327-4100 FAX: (608) 834-1843
 TOLL FREE: (800) 929-3726 TOLL FREE FAX: (866) 639-7012
 WWW.FIREFACILITIES.COM; INFO@FIREFACILITIES.COM

WESCO MODEL FF-4
CUSTOM
CRESTVIEW, FL

Job Description: FOUNDATION DESIGN
 Date: JANUARY 4, 2022
 Drawn by: DWK
 Checked by:
 Scale: SHOWN
 Order No.: FTE-796 / 244368
 Sheet No.: 02 of 02