



1

MPR

MDF
LMC

29

28

27

2

26 25 24 23

OFFICE

22 21 20 19

18 17

16 15 14 13

7 6 5 4

12 11 10 9

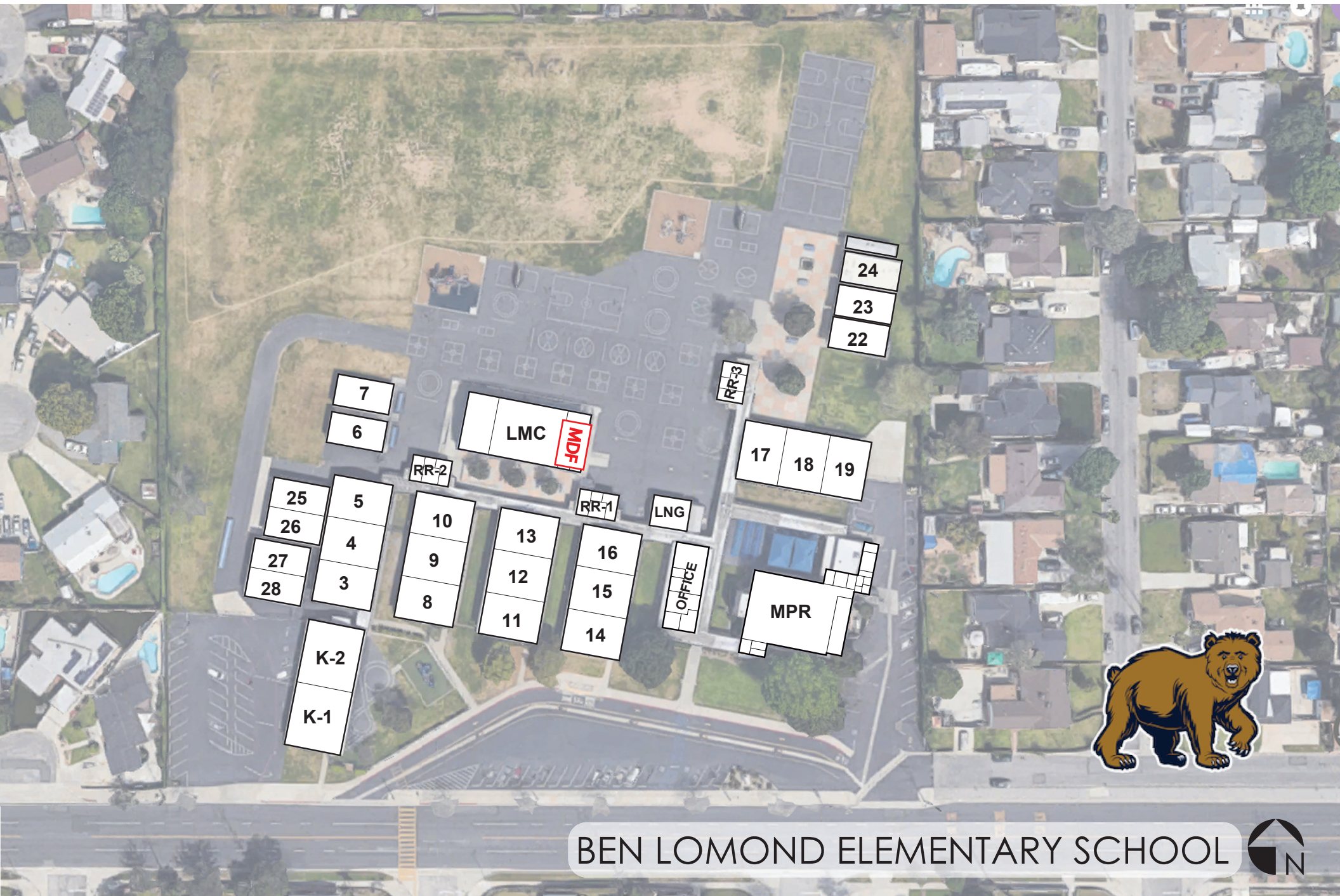
8

3

2 1

BARRANCA ELEMENTARY SCHOOL





BEN LOMOND ELEMENTARY SCHOOL





CYPRESS ELEMENTARY SCHOOL





31 30

3
4

1
2

MPR

OFFICE

6 7 8 9

RR 1

10 11 12 13

MDF
L
M
C

14 15 16 17

RR 2

18 19 20 21

26

22 23 24 25 28



GROVECENTER ELEMENTARY SCHOOL





LMC

MDF

23

22

21

24 25

RR4

26

27

17 18

3

2

19

4

1

6

5

RR1

K2

K1

7

8

OFFICE

RR3

20

MPR

10

9

11

12

RR2

13

16

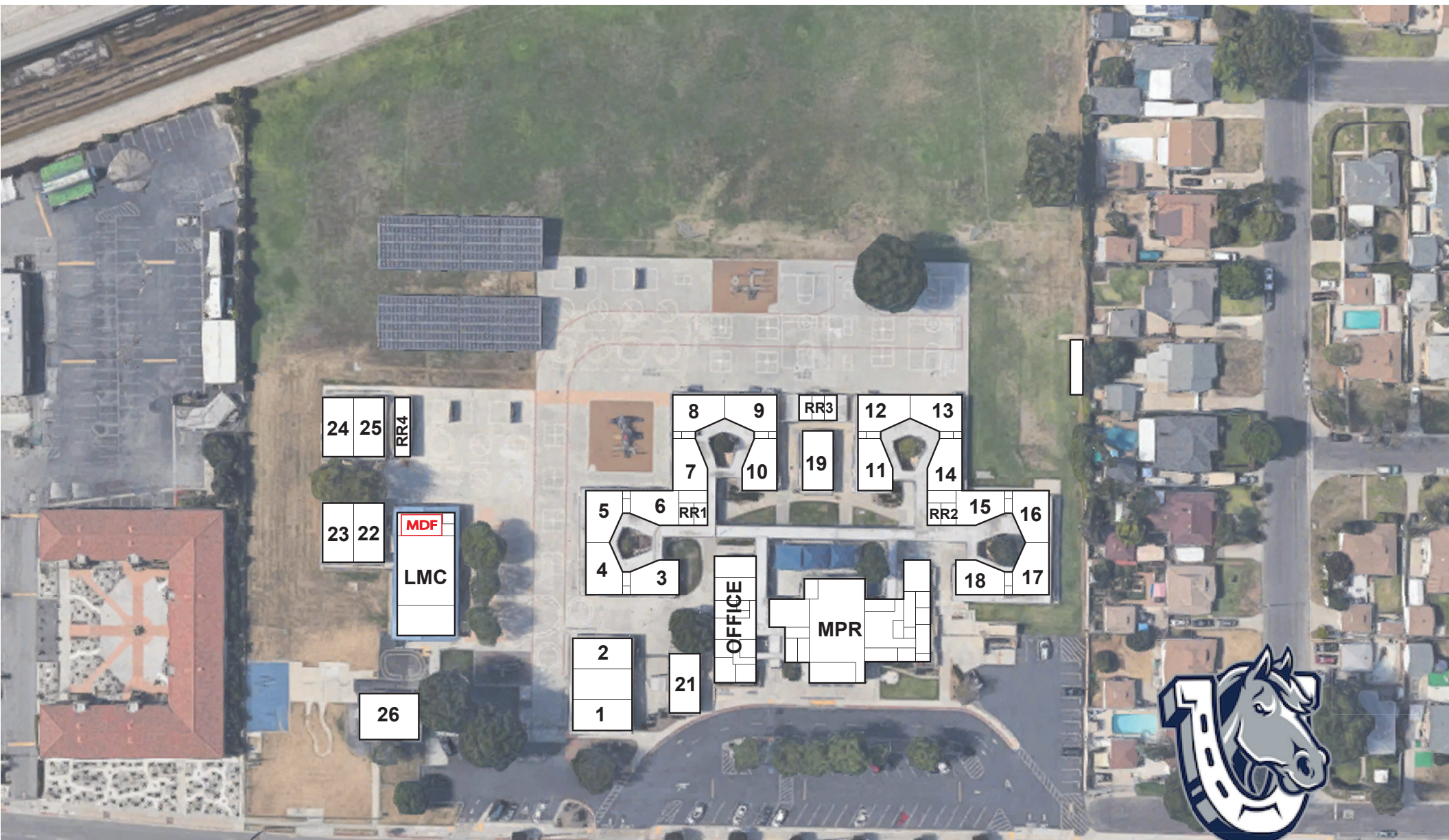
14

15



MANZANITA ELEMENTARY SCHOOL





24 25

RR4

23 22

MDF

LMC

26

8

9

RR3

12

13

7

10

19

11

14

5

6

RR1

RR2

15

16

4

3

18

17

2

21

OFFICE

MPR

1



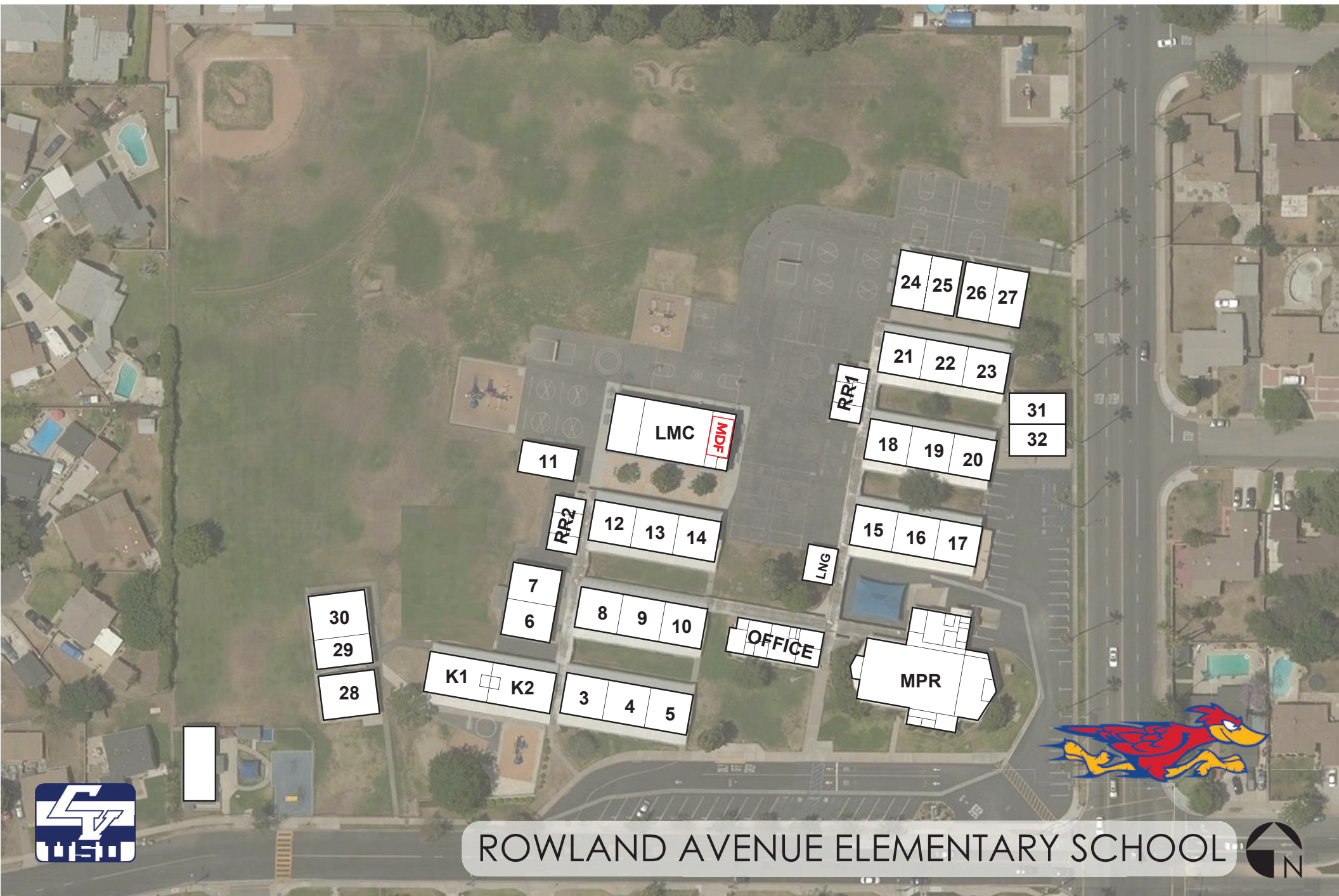
MERWIN ELEMENTARY SCHOOL





MESA ELEMENTARY SCHOOL





ROWLAND AVENUE ELEMENTARY SCHOOL





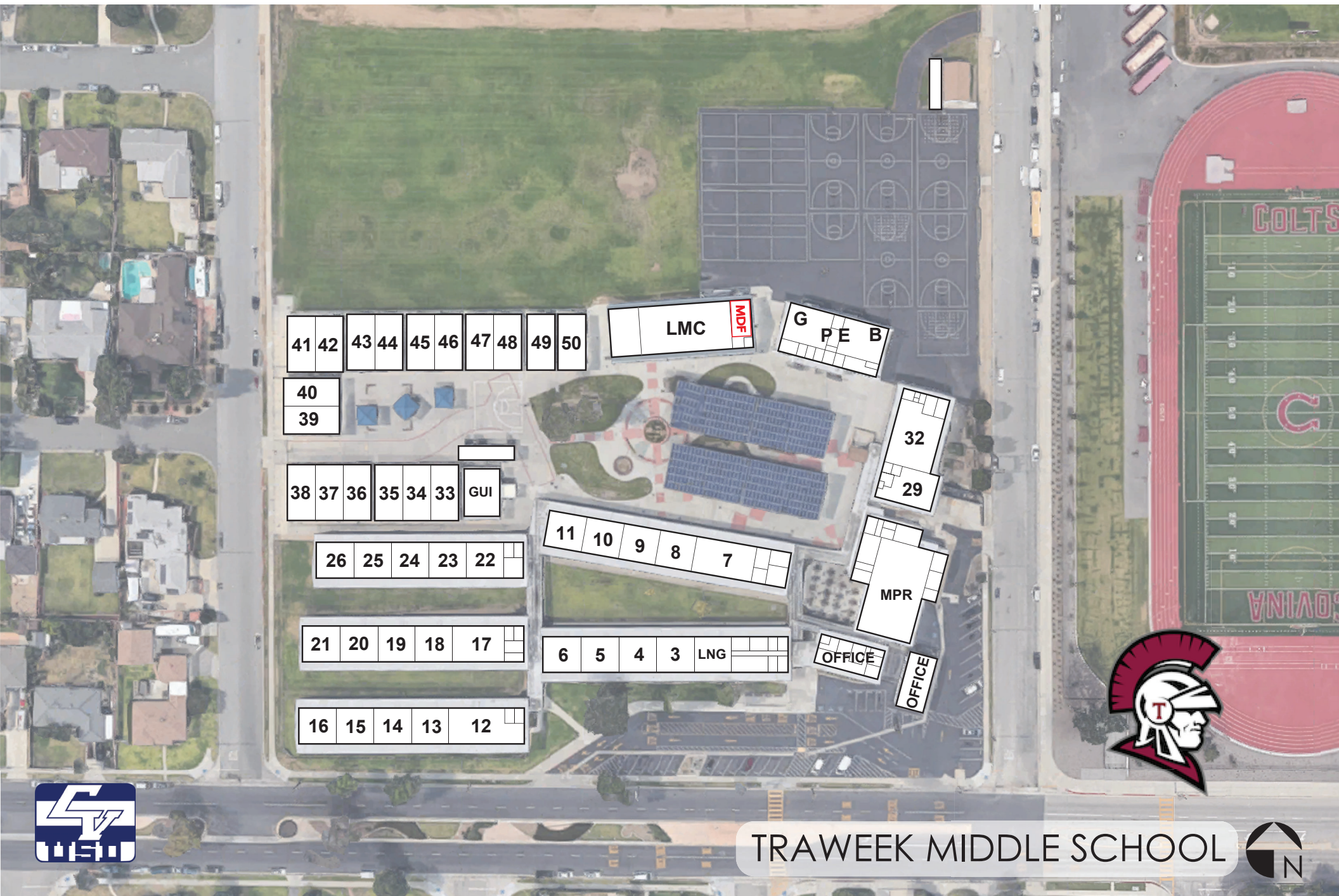
WORKMAN ELEMENTARY SCHOOL





LAS PALMAS MIDDLE SCHOOL





41 42 43 44 45 46 47 48 49 50

40
39

38 37 36 35 34 33 GUI

26 25 24 23 22

21 20 19 18 17

16 15 14 13 12

LMC MDE

G PE B

32
29

11 10 9 8 7

MPR

6 5 4 3 LNG

OFFICE

OFFICE

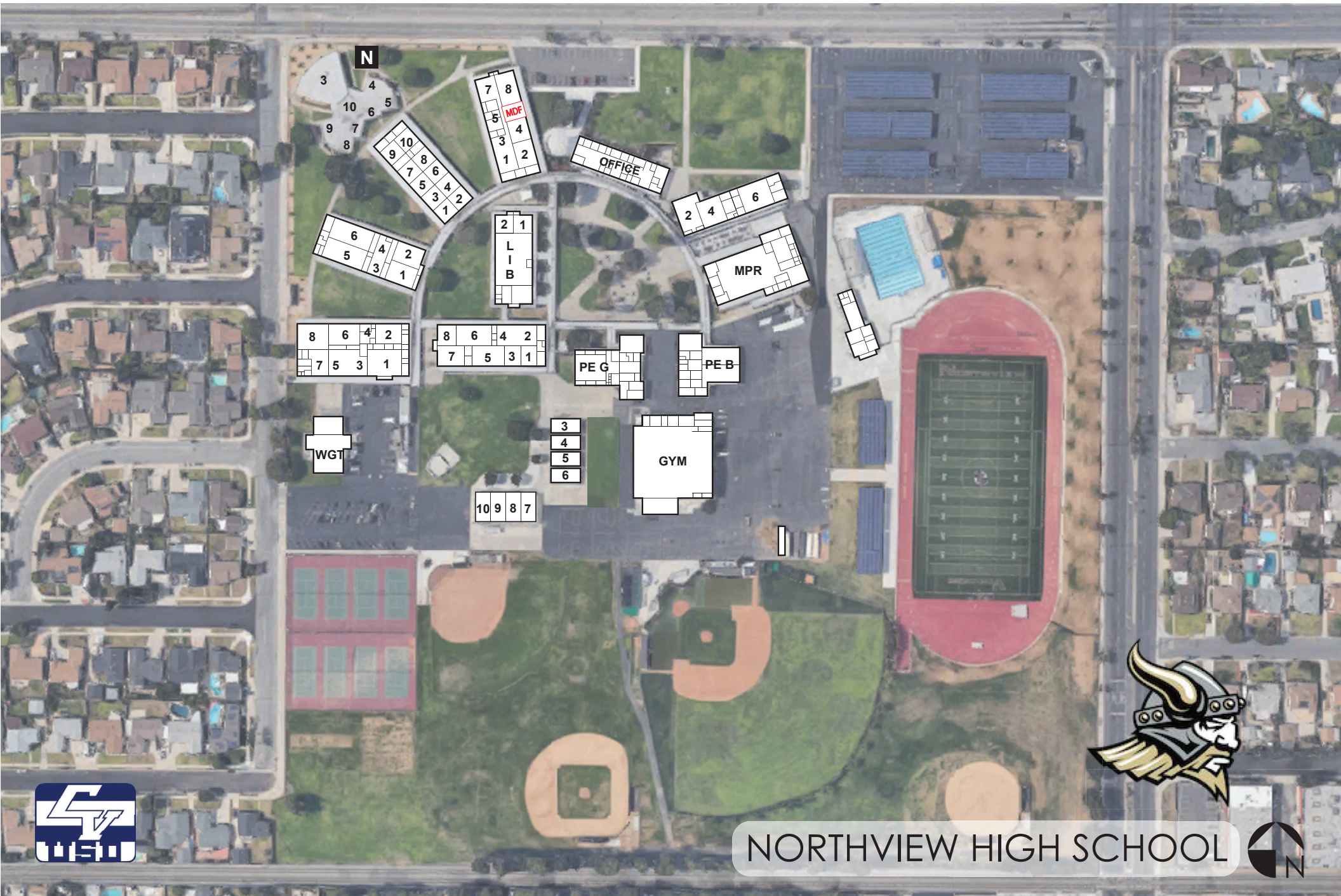


TRAWEEK MIDDLE SCHOOL





COVINA HIGH SCHOOL 



N

7 8
5 4
3 2
1

OFFICE

10 9 8 7 6 5 4 3 2 1

6 5 4 3 2 1

2 1
L
I
B

2 4 6

MPR

8 6 4 2
7 5 3 1

8 6 4 2
7 5 3 1

PE G

PE B

WGT

3
4
5
6

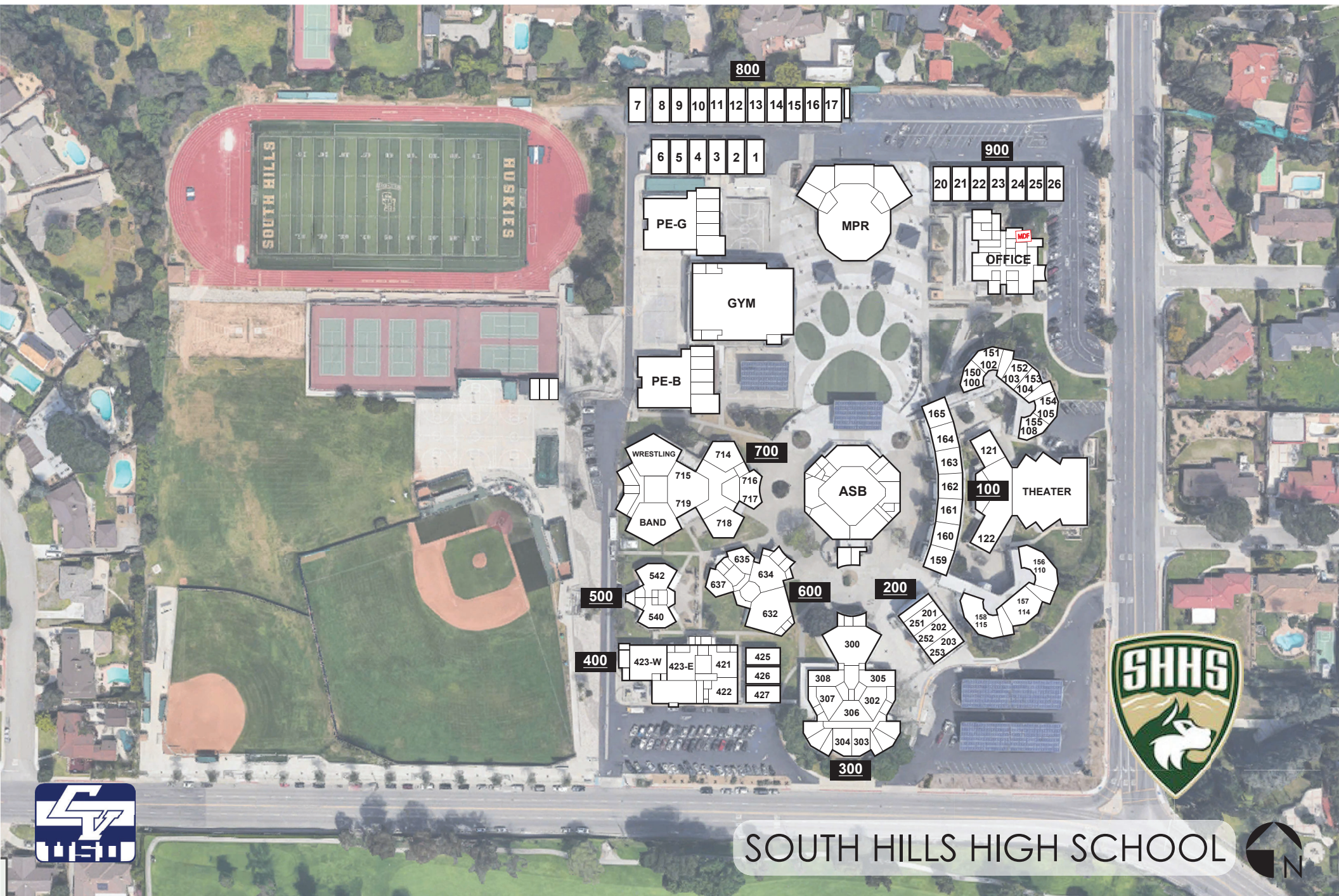
GYM

10 9 8 7



NORTHVIEW HIGH SCHOOL





800

7 8 9 10 11 12 13 14 15 16 17

6 5 4 3 2 1

900

20 21 22 23 24 25 26

PE-G

MPR

OFFICE

GYM

PE-B

151
150 102
100
152
103 153
104
154
105
155
108

WRESTLING
715
716
717
718
719
714
716

700

ASB

100 THEATER

500

542
540

635
634
632
637

600

200

201
251
202
252
203
253

156
110
157
114
158
115

400

423-W 423-E 421
422 427

425
426
427

300
308 305
307 302
306
304 303

300



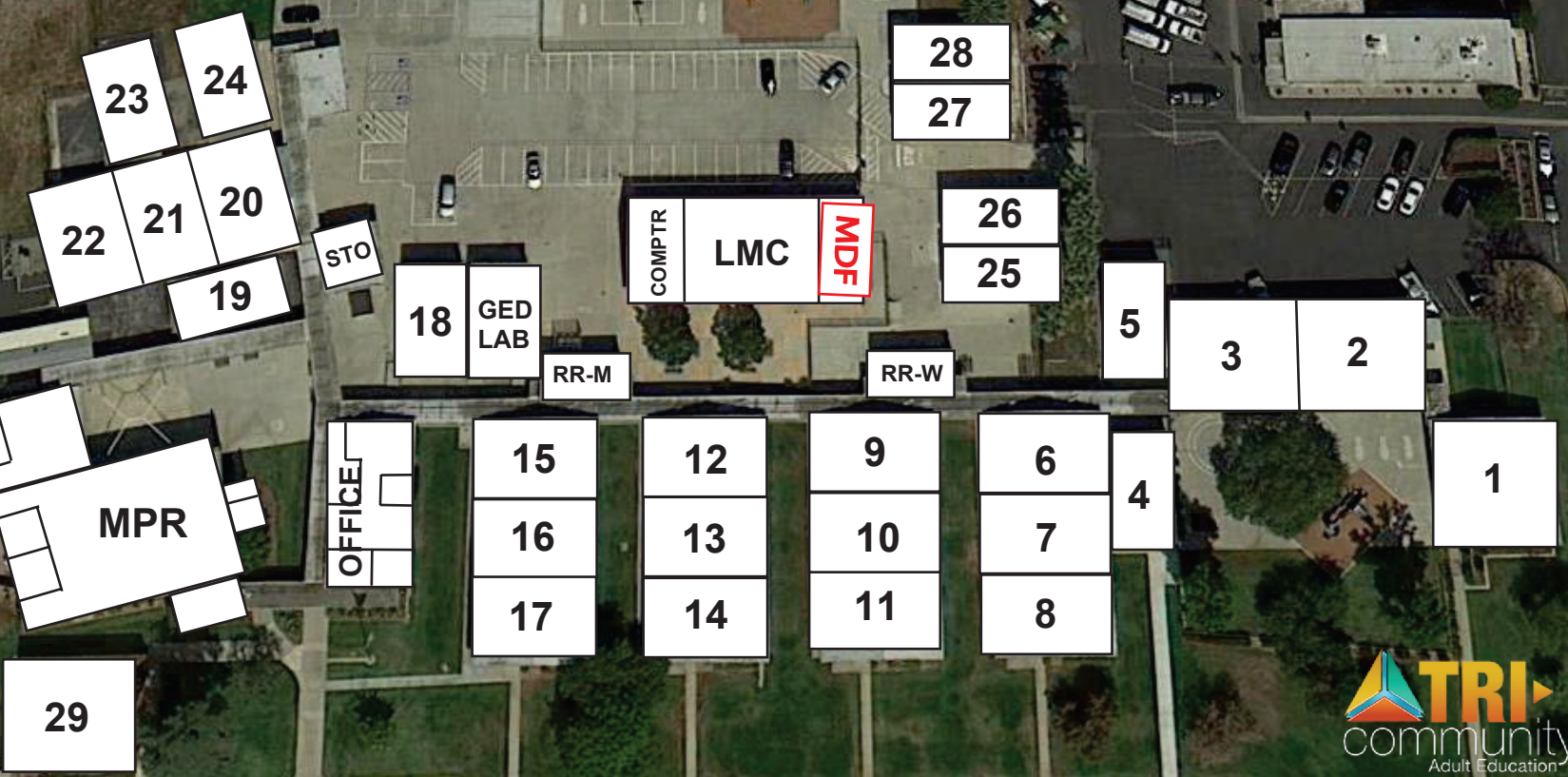
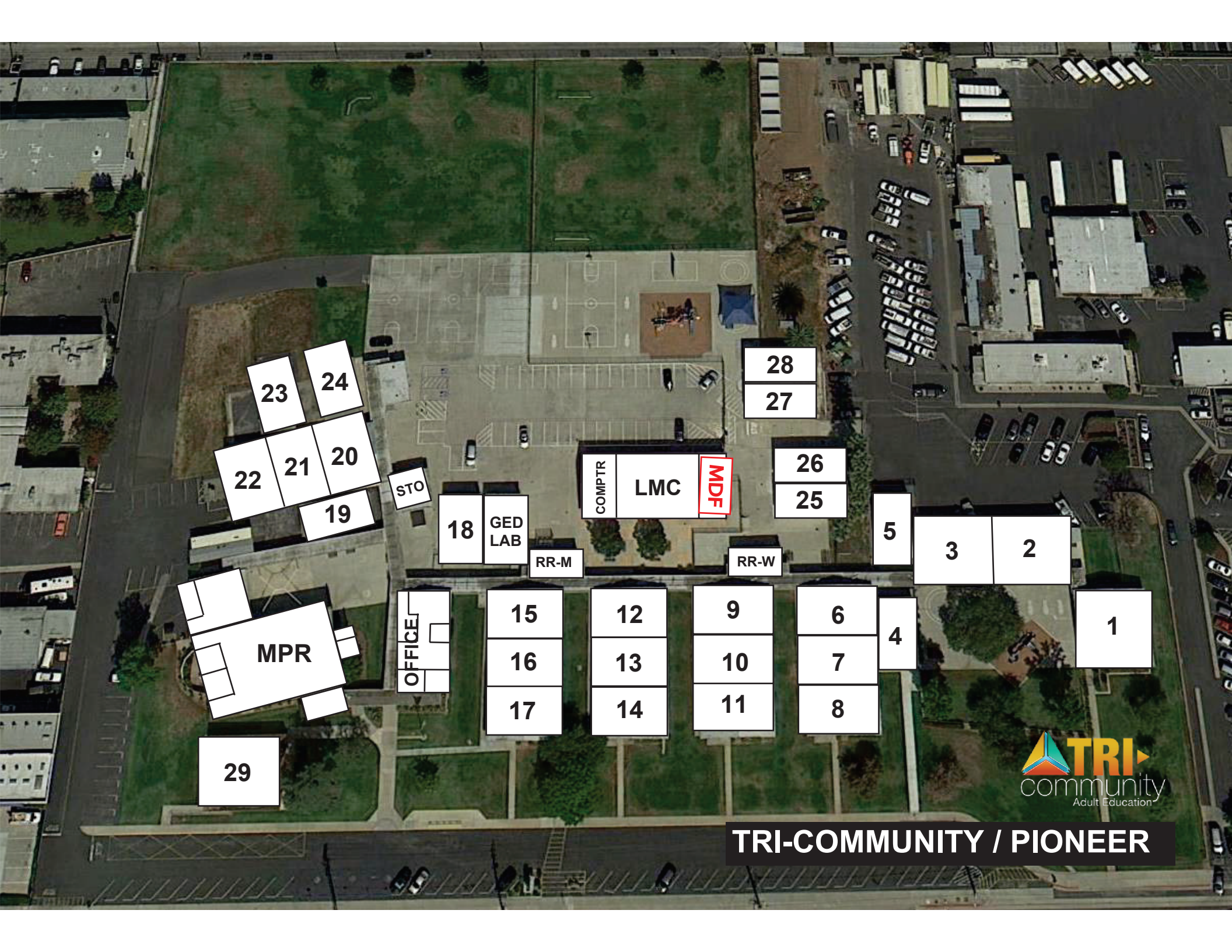
SOUTH HILLS HIGH SCHOOL



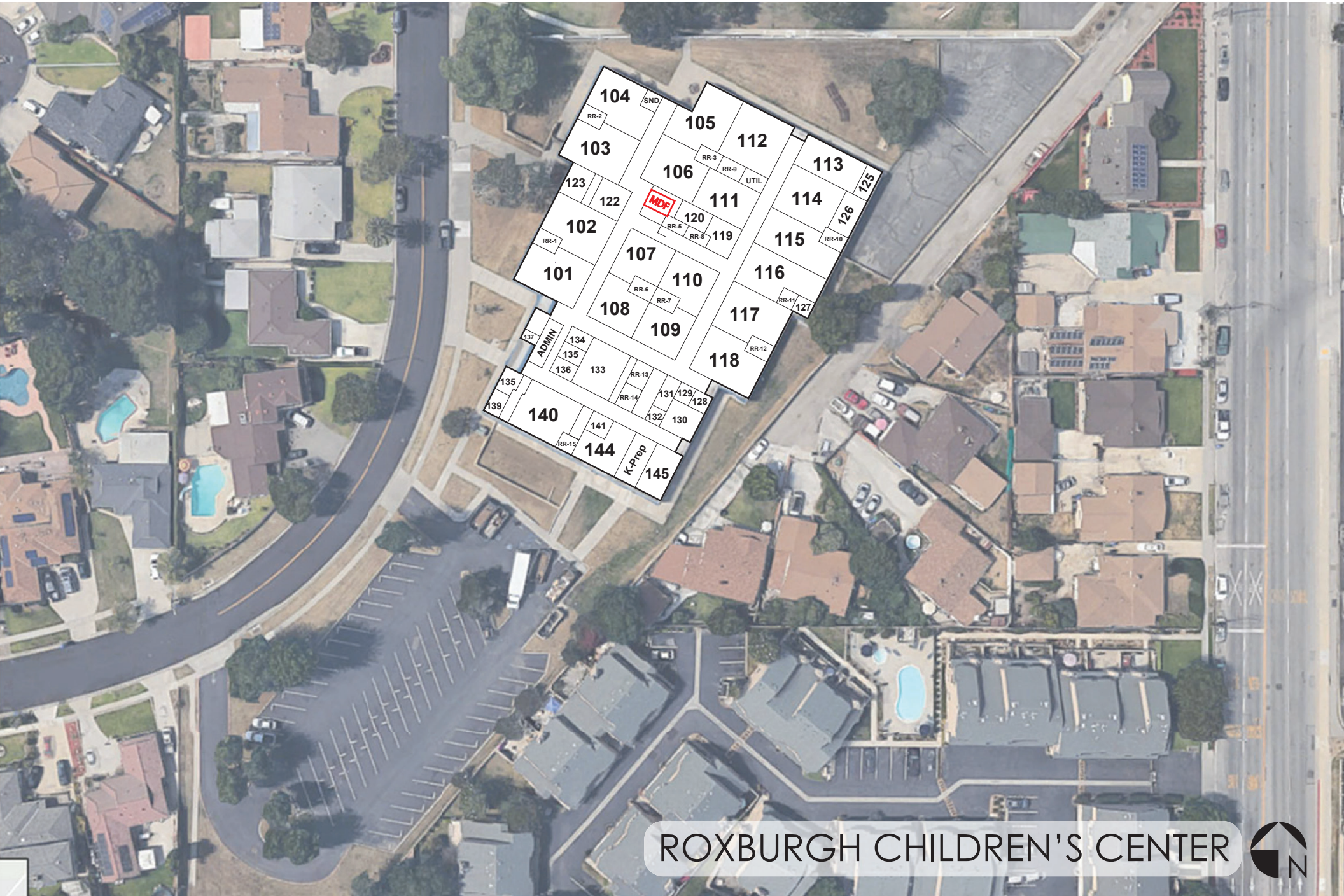


TRADE TECH ACADEMY





TRI-COMMUNITY / PIONEER



ROXBURGH CHILDREN'S CENTER



Puente St

W Puente St

W Puente St

W Puente St

Covina District Field

Covina Valley USD District Field

MDF

Covina District Field



DISTRICT FIELD





Barranca Ave

MDF/
Data Center

Covina-Valley Unified
School District



DISTRICT OFFICE

Badillo St

E Badillo St

Fairvalley High School / Adult Transition Program

758 West Grondahl Street, Covina, CA 91722



Cypress St

Cypress St

16832

N Lark Ellen Ave

N Lark Ellen Ave

N Lark Ellen Ave

MDF



Covina-Valley Health and Wellness Center



HEALTH AND WELLNESS CENTER