

GENERAL NOTES

- A. INTERIOR PARTITION DIMENSIONS ARE FROM FACE OF METAL STUD, UNLESS NOTED OTHERWISE.
B. ALL DIMENSIONS MUST BE FIELD VERIFIED BEFORE EXECUTION OF WORK.
C. SEE MECHANICAL, ELECTRICAL AND PLUMBING DRAWINGS FOR ADDITIONAL SCOPE OF WORK.
D. PAINT ALL NEW AND EXISTING SURFACES OF EXTERIOR AND INTERIOR WALLS IN ALL ROOMS.
E. PAINT METAL CEILING PANELS. PRIME AT RUST SPOTS.
F. TOILET FLOOR AND BASE CERFAMIC TILE.
G. TOILET WALLS MARLIT/FIBERGLASS PANEL (WHITE).
H. PAINT DOORS INSIDE AND EXTERIOR.
I. CLEAN AND SEAL CONCRETE FLOORS ALLAREAS EXCEPT FLOORS TO RECEIVE CERAMIC TILE.
J. NEW DOORS 3070 WOOD PREFINISHED.

SHEET NOTES

1. NOT USED

SYMBOL LEGEND

PARTITION WALLS

- [24] SINGLE FACED METAL STUD PARTITION
STEEL STUD 3 5/8" AT 16" OC
GYPSUM BOARD 5/8" ON ONE SIDE
EXTEND PARTITION TO UNDERSIDE OF DECK
- [40] SOUND RATED METAL STUD PARTITION
STEEL STUD 3 5/8" AT 16" OC
GYPSUM BOARD 5/8" ON BOTH SIDES
3" SOUND ATTENUATION BLANKET
EXTEND PARTITION TO UNDERSIDE OF DECK

- [D] EXPOSED BRICK WALL - REMAIN AS IS.
[F] REPAIR DENTED METAL LINER PANEL
[G] EXISTING DOORS - CLEAN/PAINT ADJUST AS NEEDED; INSTALL CLOSERS ON SWINGING DOORS

KEY PLAN

MEMBERS OF THE AMERICAN INSTITUTE OF ARCHITECTS

COPYRIGHT 2018 ALL RIGHTS RESERVED
PRINTED OR ELECTRONIC DRAWINGS AND
DOCUMENTATION MAY NOT BE REPRODUCED
IN ANY FORM WITHOUT WRITTEN PERMISSION
FROM LS3P ASSOCIATES LTD.

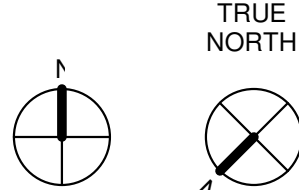
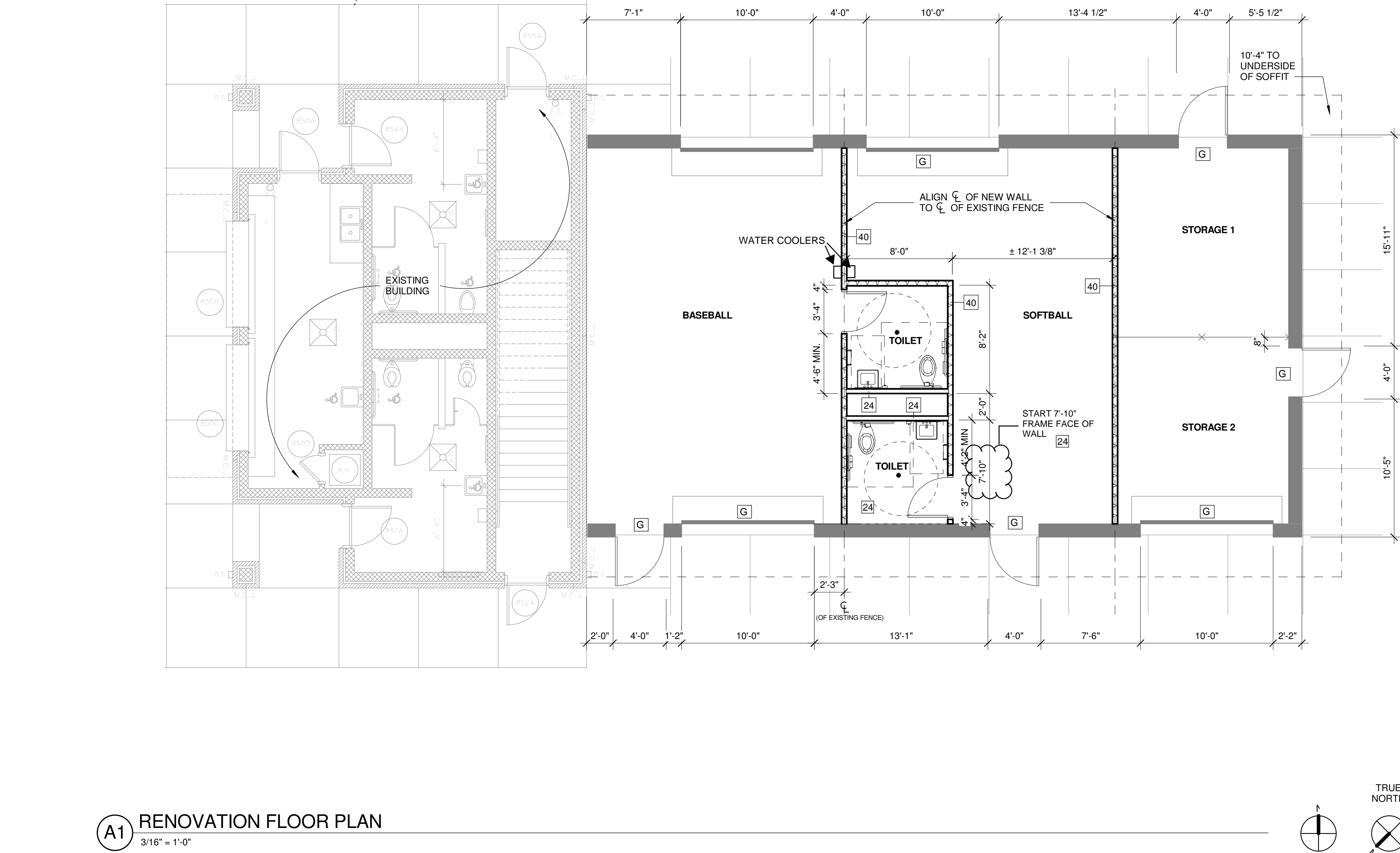
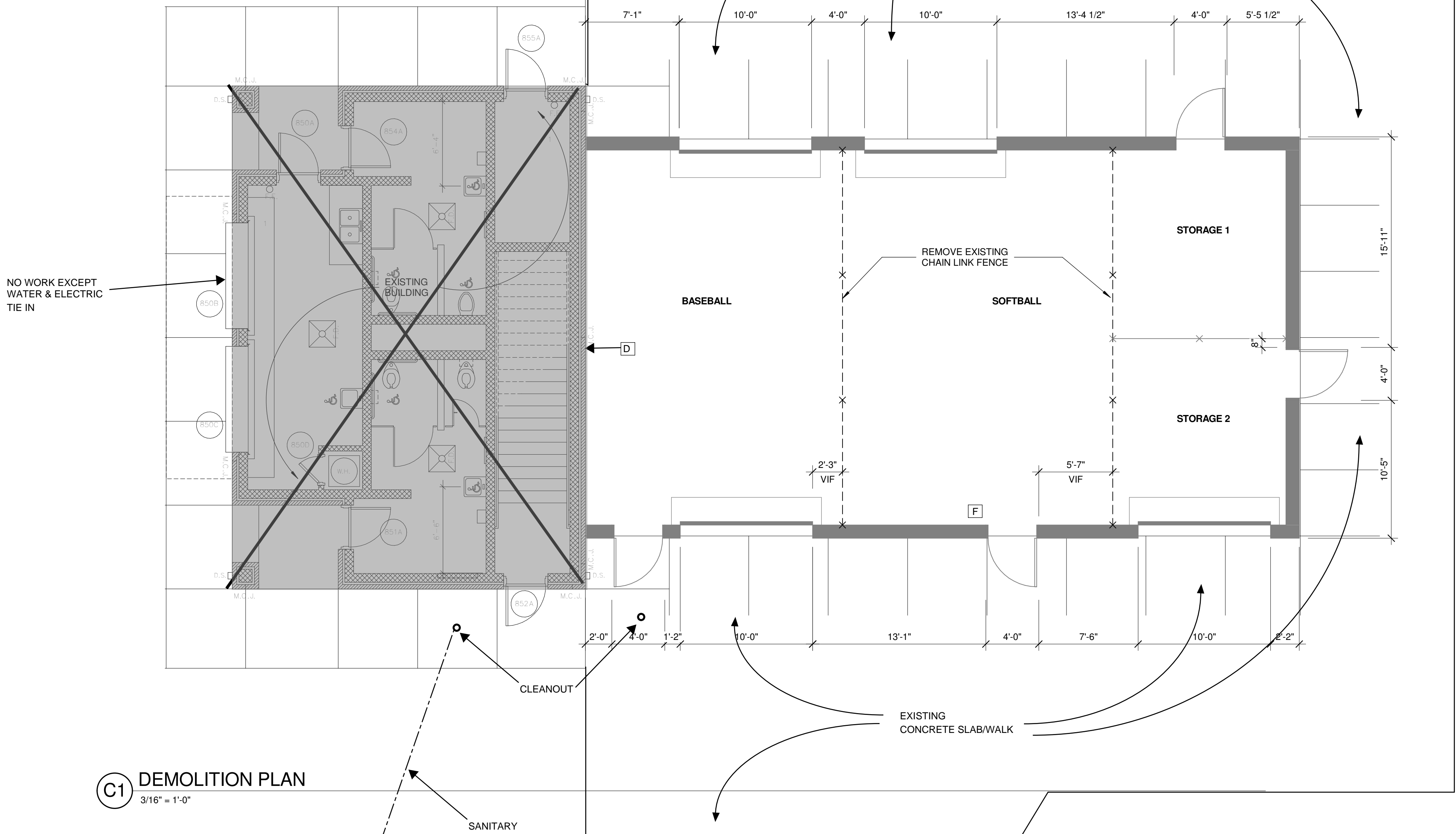
REVISIONS:

No.	Description	Date
-----	-------------	------

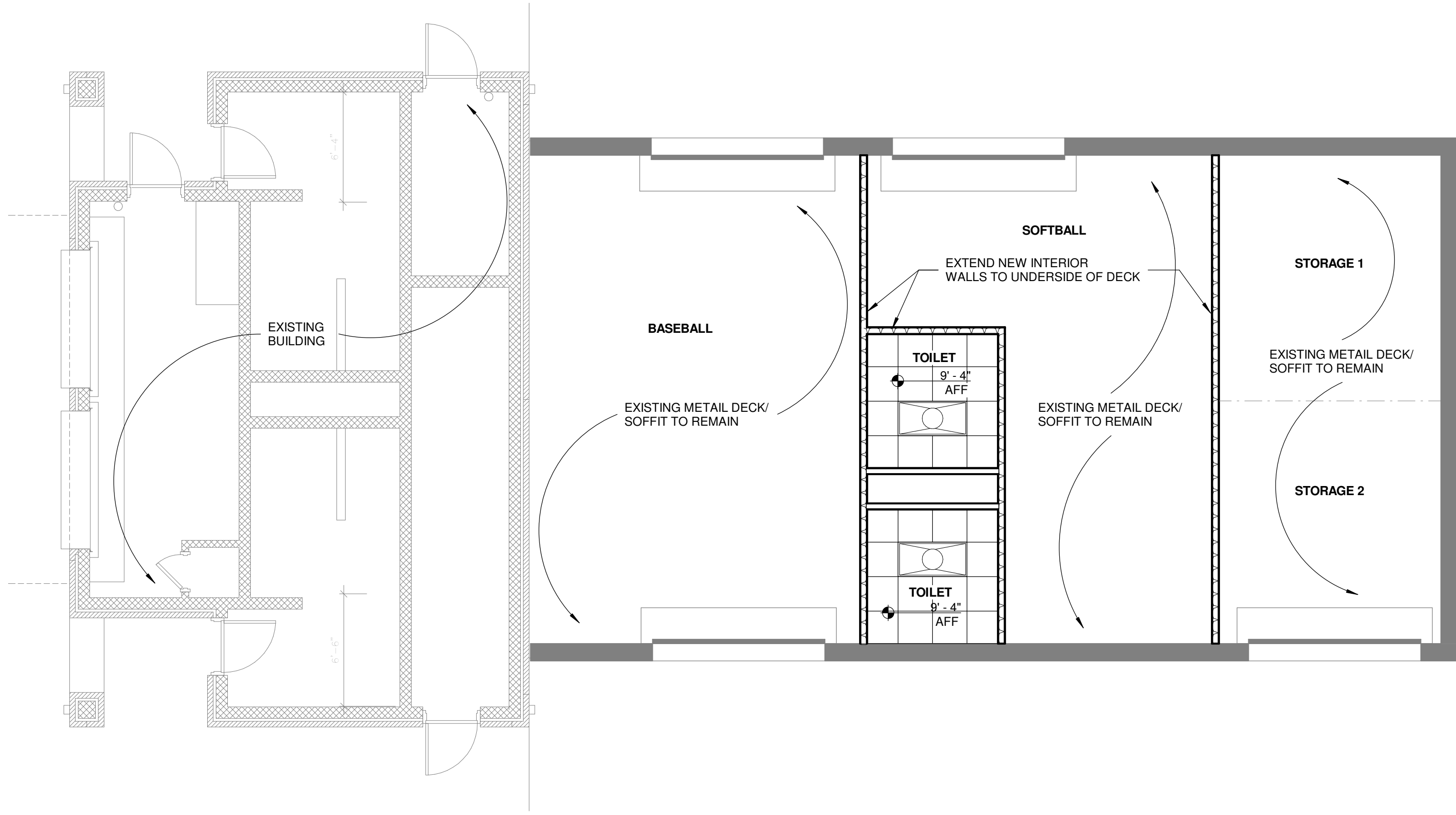
PROJECT: 2201-175620
DATE: 06/20/2018

DEMOLITION &
RENOVATION
PLAN

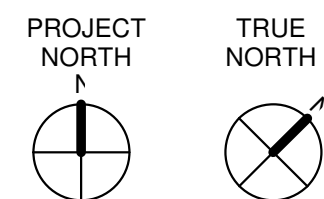
A-101



C:\Users\rohitpate\Documents\ARCH_South Point HS Baseball Bldg_2017_rhnpate2383.rvt
3/12/2018 12:11:11 PM



A1 REFLECTED CEILING PLAN
3/16" = 1'-0"



RCP LEGEND

- 1'-0" HEIGHT ABOVE FINISHED FLOOR
- 2X2 LAY-IN IMPACT RESISTANT CEILING PANEL
- 2 X 4 FLUORESCENT FIXTURE
- 2 X 2 FLUORESCENT FIXTURE
- INCANDESCENT FIXTURE
- SUPPLY AIR DIFFUSER
- RETURN AIR DIFFUSER
- EXHAUST FAN

KEY PLAN

**SOUTH POINTE
HIGH SCHOOL
BASEBALL
BUILDING
RENOVATION**

**ROCK HILL
SCHOOLS**



NOT FOR CONSTRUCTION

MEMBERS OF THE AMERICAN INSTITUTE OF ARCHITECTS
COPYRIGHT 2018 ALL RIGHTS RESERVED
PRINTED OR ELECTRONIC DRAWINGS AND
DOCUMENTATION MAY NOT BE REPRODUCED
IN ANY FORM WITHOUT WRITTEN PERMISSION
FROM LS3P ASSOCIATES LTD.

REVISIONS:

No.	Description	Date
-----	-------------	------

PROJECT: 2201-175620
DATE: 06/20/2018

**REFLECTED
CEILING PLAN**

A-121

E

D

C

B

A

WATER HAMMER ARRESTER SCHEDULE

P.D.I. SYMBOL	FIXTURE UNIT RATING	MANUFACTURER AND MODEL	REMARKS
A	1-11	J.R. SMITH HYDROTROL 5005	
B	12-32	J.R. SMITH HYDROTROL 5010	
C	33-60	J.R. SMITH HYDROTROL 5020	
D	61-113	J.R. SMITH HYDROTROL 5030	
E	114-154	J.R. SMITH HYDROTROL 5040	
F	155-330	J.R. SMITH HYDROTROL 5050	

PLUMBING LEGEND

————	SANITARY WASTE LINE		CHECK VALVE
-----	SANITARY VENT LINE		RELIEF VALVE
==== ====	STORM DRAINAGE LINE		UNION IN LINE
-----	DOMESTIC COLD WATER LINE		NEW CONNECTS TO EXISTING
-----	DOMESTIC HOT WATER LINE		CONCENTRIC REDUCER
-----	HOT WATER RECIRCULATING LINE		ECCENTRIC REDUCER (TURNED DOWN)
—G—	GAS LINE		PIPE TURNS TO
—110°—	TEMPERED WATER (110°)		PIPE TURNS AWAY
—140°—	HIGH TEMPERATURE WATER (140°)		HOSE BIBB WITH VACUUM BREAKER
—F.CO.—	FLOOR CLEANOUT		GAS PRESSURE REGULATOR
—G.CO.—	GRADE CLEANOUT		THERMOMETER
—[]—	FLOOR DRAIN		PRESSURE GAUGE
—●—	BALL VALVE		VACUUM BREAKER

PLUMBING GENERAL NOTES

- SEE SITE PLAN FOR CONTINUATION OF UTILITIES. COORDINATE INVERTS WITH SITE UTILITIES PRIOR TO INSTALLING UNDERGROUND UTILITIES.
- DO NOT SCALE DRAWINGS. SEE ARCHITECTURAL DRAWINGS FOR EXACT DIMENSIONS, FIXTURE LOCATIONS, ETC.
- EXCEPT WHERE PIPE SPACE IS PROVIDED, ALL SUPPLY, WASTE AND VENT RISERS SHALL BE RUN IN WALLS AND PARTITIONS.
- HOT AND COLD WATER PIPING RUNS ABOVE CEILING.
- VENTS SHALL EXTEND THROUGH THE ROOF 12" ABOVE ROOF.
- PROVIDE ACCESS TO ALL EQUIPMENT REQUIRING CLEANING OR ADJUSTMENT. ACCESS IN RATED ASSEMBLIES SHALL MEET OR EXCEED THE REQUIREMENTS OF THE ASSEMBLY.
- COORDINATE PLUMBING WORK WITH THE WORK OF OTHER TRADES TO AVOID INTERFERENCE AND CONFLICT.
- STORM DRAIN PIPING SHALL PITCH A MINIMUM OF 1/8" PER FOOT.
- VENT PIPING SHALL PITCH A MINIMUM OF 1/8" PER FOOT.
- ALL HOSE BIBBS, VALVES WITH THREADED HOSE CONNECTIONS, AND ALL WALL HYDRANTS SHALL BE EQUIPPED WITH A VANDAL PROOF VACUUM BREAKER.
- PLUMBING CONTRACTOR SHALL ROUGH-IN ALL WASTE AND SUPPLIES TO SPECIAL EQUIPMENT ACCORDING TO MANUFACTURER'S APPROVED SHOP DRAWINGS AND MAKE FINAL CONNECTIONS. ALL SUPPLIES SHALL HAVE SHUT-OFF VALVES.
- PLUMBING CONTRACTOR SHALL INSTALL DIELECTRIC UNIONS AT CONNECTIONS OF DISSIMILAR METALS.
- INSTALL ALL GAS PIPING IN ACCORDANCE WITH GAS SECTION OF THE INTERNATIONAL GAS CODE.
- COLD AND HOT WATER LINES SHOWN IN THE AREA OF A FIXTURE AND/OR TOILET GROUP SHALL BE RUN FULL SIZE OF HEADER INDICATED IN WALL AND/OR CHASE. PROVIDE CONNECTION TO FIXTURES, HOSE BIBB AND TRAP PRIMER AS PLUMBING CONNECTION SCHEDULE AND DETAILS INDICATE.
- SIZES OF VENT PIPE SHALL BE 2" UNLESS STATED OTHERWISE ON PLANS.

PLUMBING ABBREVIATIONS

AFF	ABOVE FINISHED FLOOR	G	GAS	NC	NORMALLY CLOSED
AP	ACCESS PANEL	GPM	GALLONS PER MINUTE	NO	NORMALLY OPEN
CI	CAST IRON	HW	HOT WATER	SD	STORM DRAIN
CW	COLD WATER	HWR	HOT WATER RECIRCULATING LINE	TD	TRENCH DRAIN
D	DIRECT WASTE	IW	INDIRECT WASTE	TYP	TYPICAL
DIA	DIAMETER	IE	INVERT ELEVATION	V	VENT
ET	EXPANSION TANK	MAX	MAXIMUM	VTR	VENT THRU ROOF
FD	FLOOR DRAIN	MIN	MINIMUM	W	WASTE
FT	FEET	MV	MIXING VALVE		

PLUMBING DEMOLITION NOTES

- DRAWINGS SHOW GENERAL INTENT OF DEMOLITION. QUANTITIES, LOCATIONS, SIZES AND EQUIPMENT ARE SHOWN TO INDICATE TYPE OF SYSTEM INSTALLED AND DOES NOT NECESSARILY REPRESENT EXACT CONDITIONS. CONTRACTOR SHALL FIELD VERIFY BEFORE BIDDING.
- DEMOLITION OF EQUIPMENT, SYSTEMS AND COMPONENTS SHALL INCLUDE ALL SUPPORTS, PADS, HANGERS, INSULATION, CONTROLS, STARTERS, ACCESSORIES AND APPURTENANCES NOT REQUIRED FOR THE INSTALLATION OF THE NEW SYSTEM.
- WHEN PARTIAL DEMOLITION OF A SYSTEM IS INDICATED, THE PART OF THE SYSTEM SHOWN TO BE REMOVED SHALL BE REMOVED TO THE ACTIVE MAIN OR BRANCH IF NOT REQUIRED FOR THE INSTALLATION OF THE NEW SYSTEM. THE ACTIVE MAIN OR BRANCH SHALL BE REPAIRED TO MATCH THE NEW INSTALLATION AS PRACTICAL. IF SYSTEM IS INSULATED, INSULATION SHALL BE PATCHED AND FINISH REPAIR (I.E.: VAPOR BARRIER, COATING, ETC.).
- PATCHING OF BUILDING STRUCTURES AND FINISHES SHALL PERTAIN TO ALL WALLS, FLOORS, SLABS, ROOFS, STRUCTURES AND FINISHES. PATCHES SHALL MATCH EXISTING STRUCTURE, FIRE RATING AND FINISH.
- ALL OPENINGS CREATED BY THE ABANDONMENT OR REMOVAL OF EXISTING SYSTEMS SHALL BE PATCHED.
- ALL WALLS, ROOFS, SLABS, STRUCTURES AND FINISHES WHOSE FINISH IS IRREGULAR DUE TO THE REMOVAL OF SYSTEMS, SUPPORTS, PADS, ACCESSORIES AND APPURTENANCES SHALL BE PATCHED.
- ALL FINISHES SHALL MATCH EXISTING FINISH. WHEN FINISH OBVIOUSLY DOES NOT MATCH EXISTING FINISH SUCH AS SHADE OF PAINT, AGE OF FINISH, ETC., THE FINISH SHALL BE APPLIED TO THE PATCH AND THE SURFACE IN ALL DIRECTIONS UNTIL A SURFACE CHANGE OF A MINIMUM 45 DEGREE.
- REMOVAL OF SYSTEMS SHALL INCLUDE COMPLETE SYSTEM WHENEVER PRACTICAL. IF NOT, SYSTEM (I.E.: PIPE, CONDUIT, ETC.) SHALL BE REMOVED TO 1 INCH BELOW SURFACE.
- WHEN WASTE SYSTEMS ARE REMOVED BUT VENT THRU ROOF REMAINS, VENT SHALL BE CAPPED ON ROOF AND IN THE BUILDING.

PLUMBING DEMOLITION AND RENOVATION LEGEND

	NEW	EXISTING TO REMAIN	REMOVE
DOMESTIC COLD WATER LINE	————	——/——/——	—X—X—X—
DOMESTIC HOT WATER LINE	-----	——/——/——	—X—X—X—
HOT WATER RECIRCULATING LINE	-----	——/——/——	—X—X—X—
SANITARY WASTE LINE	————	——/——/——	—X—X—X—
STORM DRAIN LINE	==== ====	——/——/——	—X— —X—
SANITARY VENT LINE	-----	——/——/——	—X—X—X—
PLUMBING FIXTURE	[]	[]	[X]

ROCK HILL SCHOOLS

SOUTH POINTE HIGH SCHOOL ATHLETIC PROJECTS (BASEBALL BUILDING RENOVATION)

MEMBERS OF THE AMERICAN INSTITUTE OF ARCHITECTS

COPYRIGHT 2017 ALL RIGHTS RESERVED
PRINTED OR ELECTRONIC DRAWINGS AND
DOCUMENTATION MAY NOT BE REPRODUCED
IN ANY FORM WITHOUT WRITTEN PERMISSION
FROM LS3P ASSOCIATES LTD.

REVISIONS:

No.	Description	Date
-----	-------------	------

PROJECT: 2201-175620

DATE: 06/20/2018

PLUMBING NOTES, LEGENDS & SCHEDULES

P-001

NOTES:

- T&P RELIEF VALVE. RUN FULL SIZE TO EXTERIOR.
- APOLLO "LEAD FREE" BRONZE WATER HEATER SHUT-OFF VALVE WITH THERMAL EXPANSION CONTROL VALVE, 78LF-RV. PIPE DRAIN TO FLOOR DRAIN.
- TEMPERATURE CONTROL VALVE. PROVIDE APOLLO MODEL MVB-LF DUAL MASTER MIXING VALVE.
- HEAT TRAP.

ELECTRIC WATER HEATER PIPING DETAIL

NOT TO SCALE

NOT TO SCALE

NOT TO SCALE

NOT TO SCALE

NOT TO SCALE

NOT TO SCALE

NOT TO SCALE

NOT TO SCALE

NOT TO SCALE

NOT TO SCALE

NOT TO SCALE

NOT TO SCALE

NOT TO SCALE

NOT TO SCALE

NOT TO SCALE

NOT TO SCALE

NOT TO SCALE

NOT TO SCALE

NOT TO SCALE

NOT TO SCALE

NOT TO SCALE

NOT TO SCALE

NOT TO SCALE

NOT TO SCALE

NOT TO SCALE

NOT TO SCALE

NOT TO SCALE

NOT TO SCALE

NOT TO SCALE

NOT TO SCALE

NOT TO SCALE

NOT TO SCALE

NOT TO SCALE

NOT TO SCALE

NOT TO SCALE

NOT TO SCALE

NOT TO SCALE

NOT TO SCALE

NOT TO SCALE

NOT TO SCALE

NOT TO SCALE

NOT TO SCALE

NOT TO SCALE

NOT TO SCALE

NOT TO SCALE

NOT TO SCALE

NOT TO SCALE

NOT TO SCALE

NOT TO SCALE

NOT TO SCALE

NOT TO SCALE

NOT TO SCALE

NOT TO SCALE

NOT TO SCALE

NOT TO SCALE

NOT TO SCALE

NOT TO SCALE

NOT TO SCALE

NOT TO SCALE

NOT TO SCALE

NOT TO SCALE

NOT TO SCALE

NOT TO SCALE

NOT TO SCALE

NOT TO SCALE

NOT TO SCALE

NOT TO SCALE

NOT TO SCALE

NOT TO SCALE

NOT TO SCALE

NOT TO SCALE

NOT TO SCALE

NOT TO SCALE

NOT TO SCALE

NOT TO SCALE

NOT TO SCALE

NOT TO SCALE

NOT TO SCALE

NOT TO SCALE

NOT TO SCALE

NOT TO SCALE

NOT TO SCALE

NOT TO SCALE

NOT TO SCALE

NOT TO SCALE

NOT TO SCALE

NOT TO SCALE

NOT TO SCALE

NOT TO SCALE

NOT TO SCALE

NOT TO SCALE

NOT TO SCALE

NOT TO SCALE

NOT TO SCALE

NOT TO SCALE

NOT TO SCALE

NOT TO SCALE

NOT TO SCALE

NOT TO SCALE

NOT TO SCALE

NOT TO SCALE

NOT TO SCALE

NOT TO SCALE

NOT TO SCALE

NOT TO SCALE

NOT TO SCALE

NOT TO SCALE

NOT TO SCALE

NOT TO SCALE

NOT TO SCALE

NOT TO SCALE

NOT TO SCALE

NOT TO SCALE

NOT TO SCALE

NOT TO SCALE

NOT TO SCALE

NOT TO SCALE

NOT TO SCALE

NOT TO SCALE

NOT TO SCALE

NOT TO SCALE

NOT TO SCALE

NOT TO SCALE

NOT TO SCALE

NOT TO SCALE

NOT TO SCALE

NOT TO SCALE

NOT TO SCALE

NOT TO SCALE

NOT TO SCALE

NOT TO SCALE

NOT TO SCALE

NOT TO SCALE

NOT TO SCALE

NOT TO SCALE

NOT TO SCALE

NOT TO SCALE

NOT TO SCALE

NOT TO SCALE

NOT TO SCALE

NOT TO SCALE

NOT TO SCALE

NOT TO SCALE

NOT TO SCALE

NOT TO SCALE

NOT TO SCALE

NOT TO SCALE

NOT TO SCALE

NOT TO SCALE

NOT TO SCALE

NOT TO SCALE

NOT TO SCALE

NOT TO SCALE

NOT TO SCALE

NOT TO SCALE

NOT TO SCALE

NOT TO SCALE

NOT TO SCALE

NOT TO SCALE

NOT TO SCALE

NOT TO SCALE

NOT TO SCALE

NOT TO SCALE

NOT TO SCALE

NOT TO SCALE

NOT TO SCALE

NOT TO SCALE

NOT TO SCALE

NOT TO SCALE

NOT TO SCALE

NOT TO SCALE

NOT TO SCALE

NOT TO SCALE

NOT TO SCALE

NOT TO SCALE

NOT TO SCALE

NOT TO SCALE

NOT TO SCALE

NOT TO SCALE

NOT TO SCALE

NOT TO SCALE

NOT TO SCALE

NOT TO SCALE

NOT TO SCALE

NOT TO SCALE

NOT TO SCALE

NOT TO SCALE

NOT TO SCALE

NOT TO SCALE

NOT TO SCALE

NOT TO SCALE

NOT TO SCALE

NOT TO SCALE

NOT TO SCALE

NOT TO SCALE

NOT TO SCALE

NOT TO SCALE

NOT TO SCALE

NOT TO SCALE

NOT TO SCALE

NOT TO SCALE

NOT TO SCALE

NOT TO SCALE

NOT TO SCALE

NOT TO SCALE

NOT TO SCALE

NOT TO SCALE

NOT TO SCALE

NOT TO SCALE

NOT TO SCALE

NOT TO SCALE

NOT TO SCALE

NOT TO SCALE

NOT TO SCALE

NOT TO SCALE

NOT TO SCALE

NOT TO SCALE

NOT TO SCALE

NOT TO SCALE

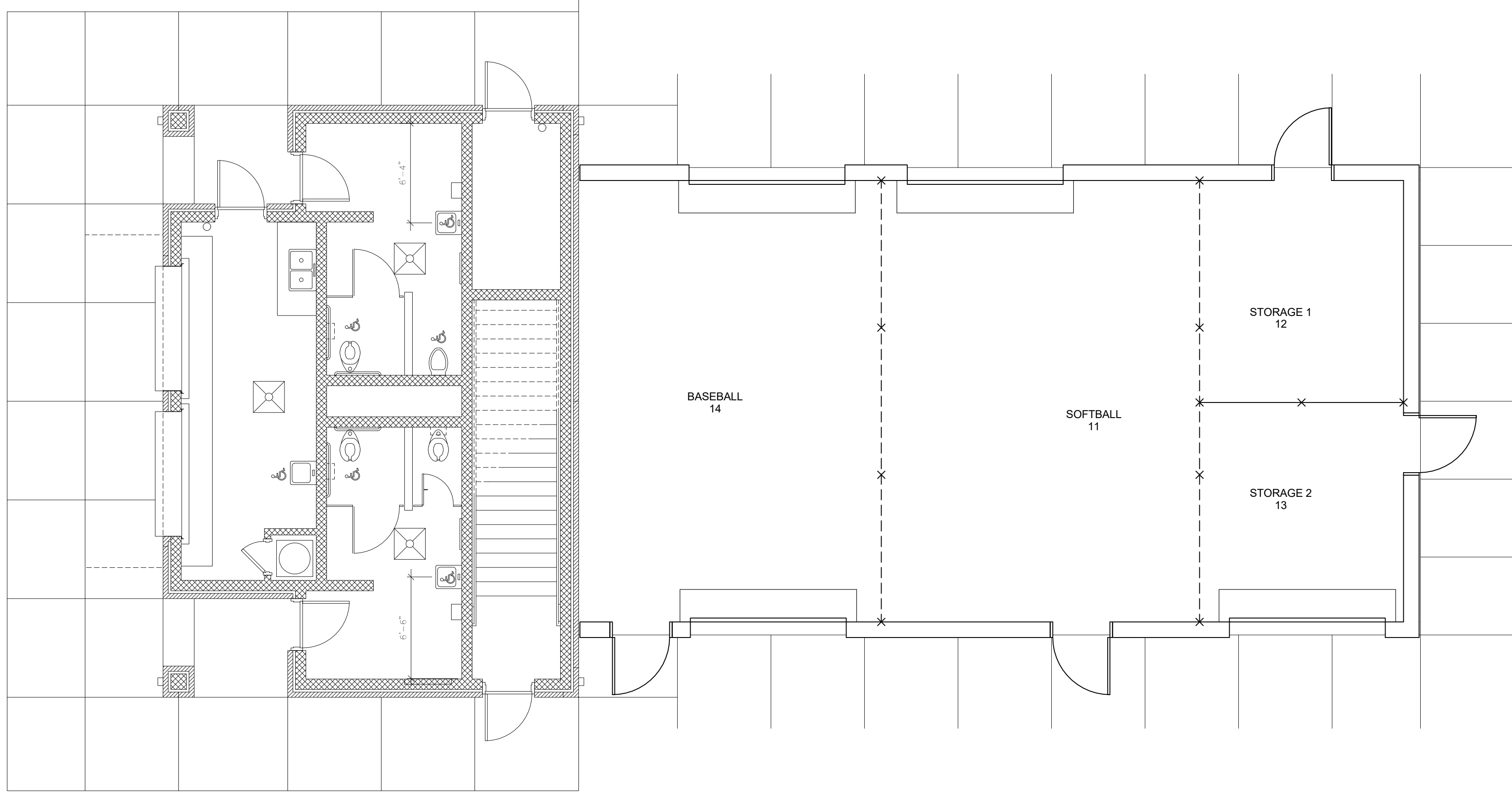
NOT TO SCALE

NOT TO SCALE

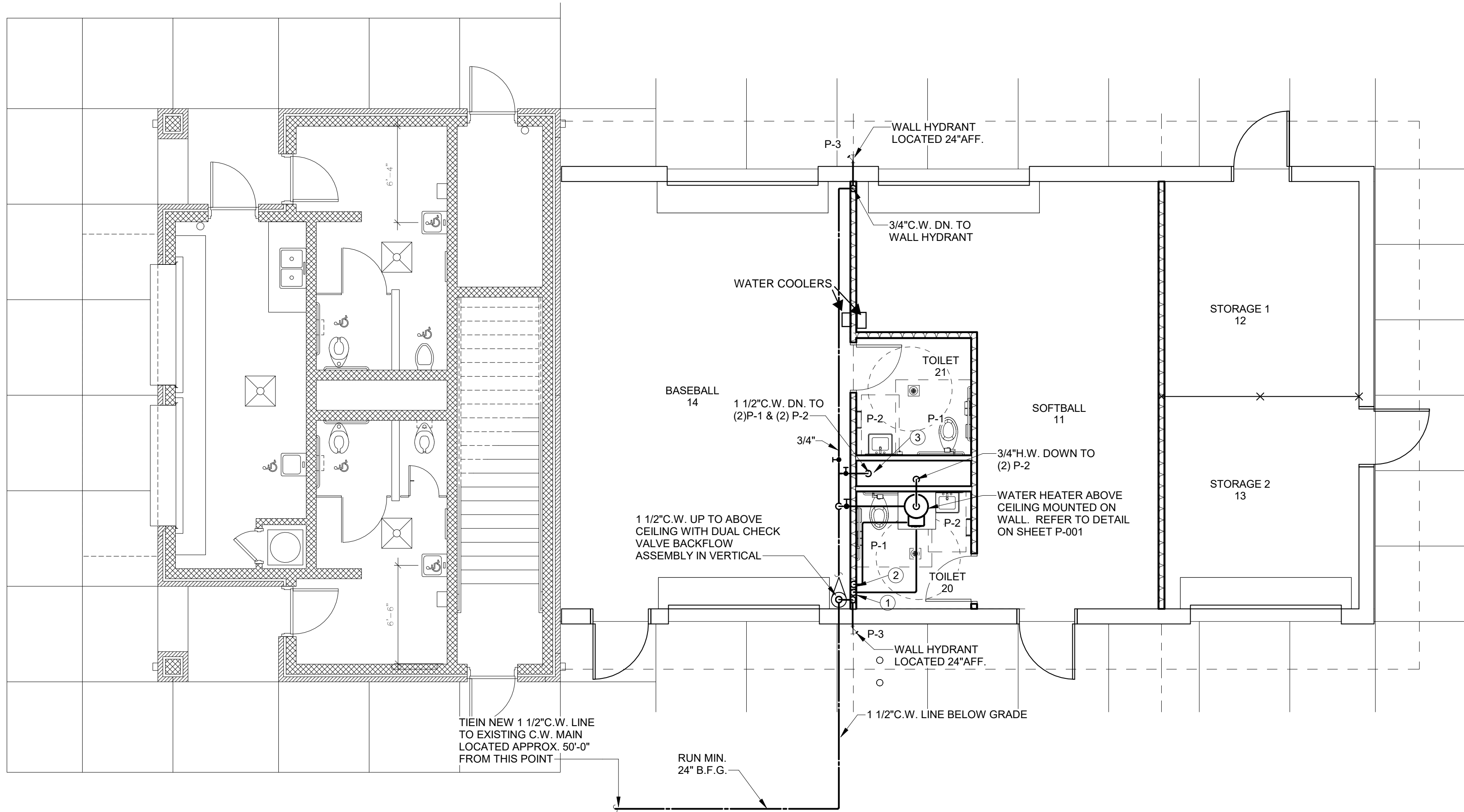
NOT TO SCALE

NOT TO SCALE

C:\Users\leah\Documents\PLUG_South Point HS Baseball Bldg_RVT 2017_leah.murman@gcanc.com.rvt
3/5/2018 1:54:56 PM



A1 DEMOLITION FLOOR PLAN - PLUMBING - SUPPLY
3/16" = 1'-0"



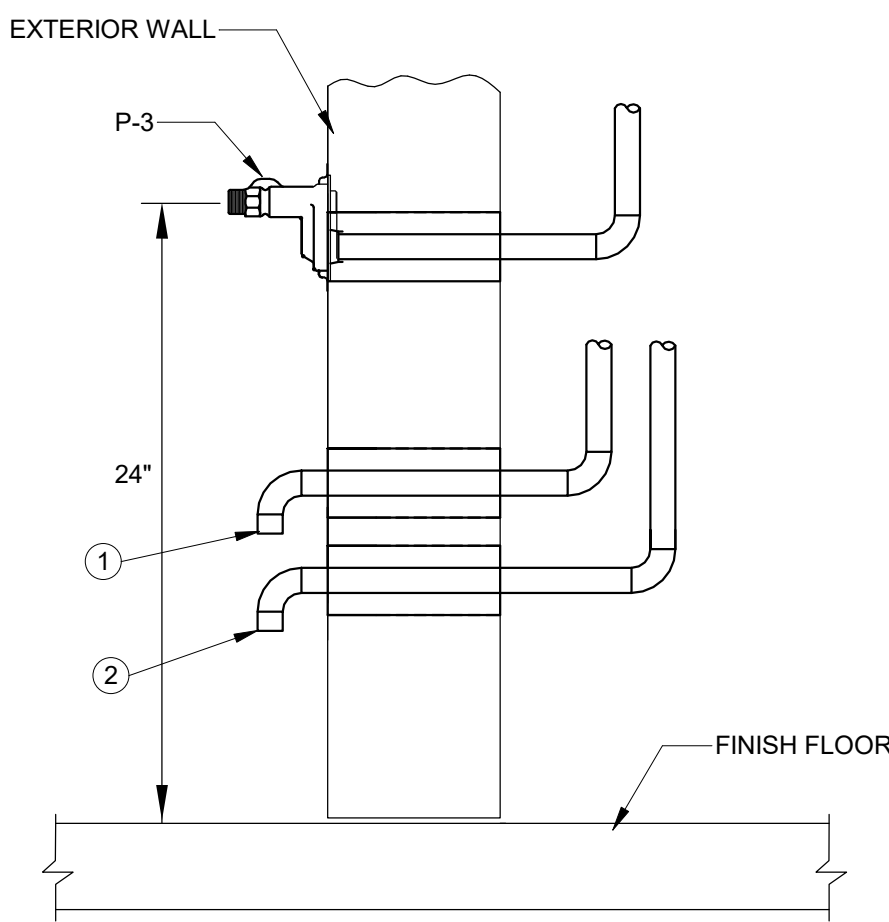
C1 RENOVATION FLOOR PLAN - PLUMBING - SUPPLY
3/16" = 1'-0"

GENERAL NOTES

- 1 COLD AND HOT WATER LINES SHOWN IN THE AREA OF FIXTURES AND/OR TOILET GROUP SHALL RUN FULL SIZE OF HEADER INDICATED IN WALL AND/OR CHASE. PROVIDE CONNECTION TO FIXTURES. HOSE BIBB AND TRAP PRIMER AS PLUMBING SCHEDULE AND DETAILS INDICATE.
- 2 ALL SHUT-OFF VALVE UP TO 2 1/2" SHALL BE BALL VALVES.
- 3 ALL VALVES SHALL BE LOCATED MAX 10'-0" AFF UNLESS APPROVED BY OWNER.
- 4 ALL VALVES, TRAP PRIMERS, AND SHOCK ABSORBERS ARE TO BE INSTALLED SO THEY ARE EASILY ACCESSIBLE.

NOTES

- 1 WATER HEATER T&P RELIEF LINE THRU EXTERIOR WALL. SPILL ON GRADE. PROVIDE BUG SCREEN AT END OF 90°.
- 2 DRIP PAN DRAIN LINE THRU EXTERIOR WALL. SPILL ON GRADE. PORIVE BUG SCREEN AT END OF 90°.
- 3 PROVIDE WATER HAMMER ARRESTOR. REFER TO SCHEDULE ON SHEET P-001.



PIPING THRU EXTERIOR WALL DETAIL
NOT TO SCALE

ROCK HILL
SCHOOLS

SOUTH POINTE
HIGH SCHOOL
ATHLETIC
PROJECTS
(BASEBALL
BUILDING
RENOVATION)

MEMBERS OF THE AMERICAN INSTITUTE OF ARCHITECTS

COPYRIGHT 2017 ALL RIGHTS RESERVED
PRINTED OR ELECTRONIC DRAWINGS AND
DOCUMENTATION MAY NOT BE REPRODUCED
IN ANY FORM WITHOUT WRITTEN PERMISSION
FROM LS3P ASSOCIATES LTD.

REVISIONS:

No.	Description	Date
-----	-------------	------

PROJECT: 2201-175620
DATE: 06/20/2018

DEMOLITION &
RENOVATION
PLANS -
PLUMBING -
SUPPLY

P-101

C:\Users\jash\Documents\PLBG_South Point HS Baseball Bldg_RVT 2017_jash.murmane@ganc.com.rvt
3/5/2018 2:41:46 PM

E

D

C

B

A

GENERAL NOTES

- 1 PROVIDE TRAP SEAL PROTECTION DEVICE IN ALL DRAINS.
- 2 FOR PLUMBING FIXTURE NUMBERS REFER TO P-101.
- 3 FOR VENT PIPING REFER TO THIS SHEET FOR RISER DIAGRAM.
- 4 ALL PIPING SHALL BE SCHEDULE 40 PVC BY CHARLOTTE.

NOTES

- 1 2" WASTE DOWN AND 2" VENT UP.
- 2 2" VENT UP.
- 3 3" WASTE DOWN AND 3" VENT UP THRU ROOF.

ROCK HILL
SCHOOLS

SOUTH POINTE
HIGH SCHOOL
ATHLETIC
PROJECTS
(BASEBALL
BUILDING
RENOVATION)

MEMBERS OF THE AMERICAN INSTITUTE OF ARCHITECTS
COPYRIGHT 2017 ALL RIGHTS RESERVED
PRINTED OR ELECTRONIC DRAWINGS AND
DOCUMENTATION MAY NOT BE REPRODUCED
IN ANY FORM WITHOUT WRITTEN PERMISSION
FROM LS3P ASSOCIATES LTD.

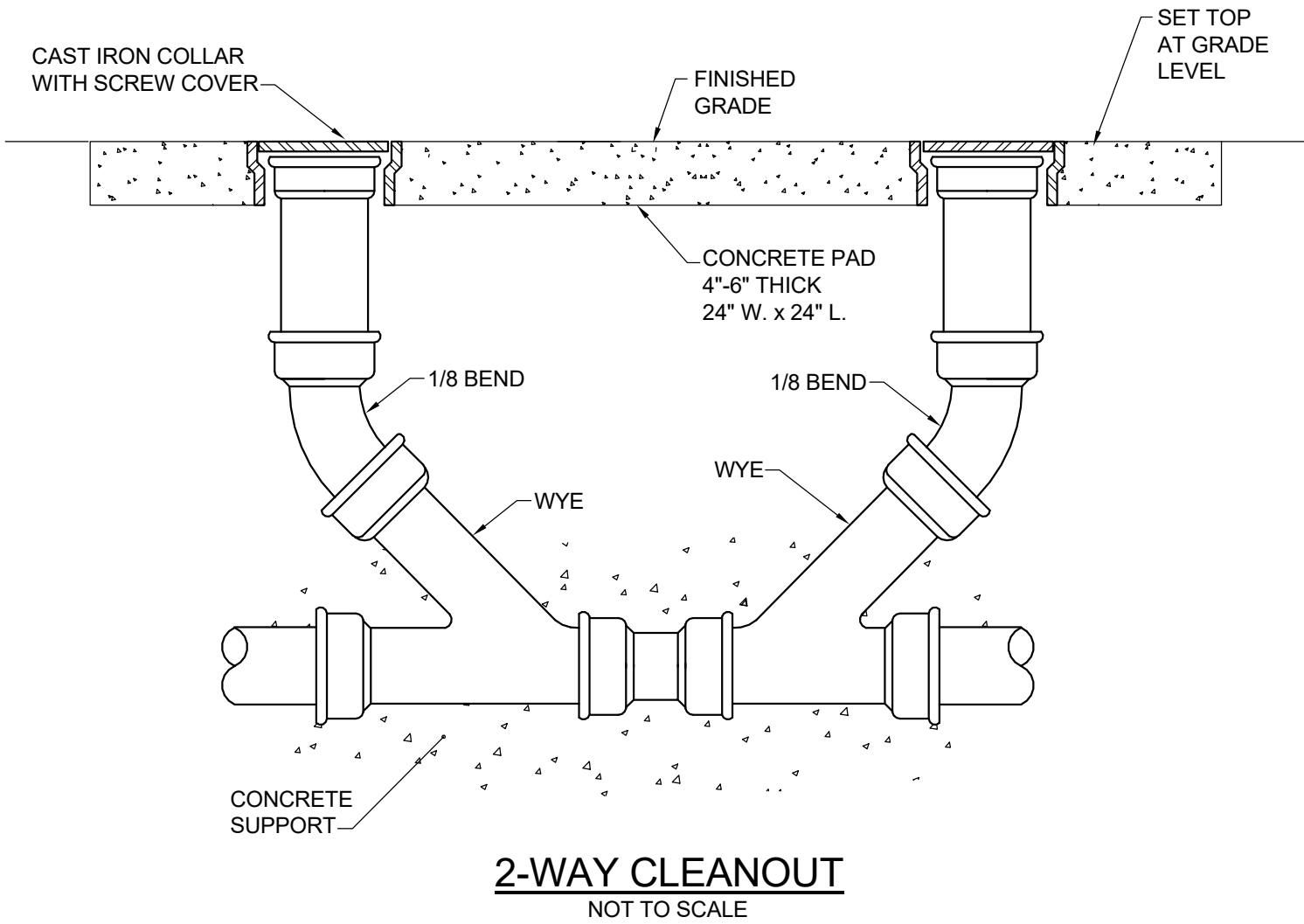
REVISIONS:

No.	Description	Date
-----	-------------	------

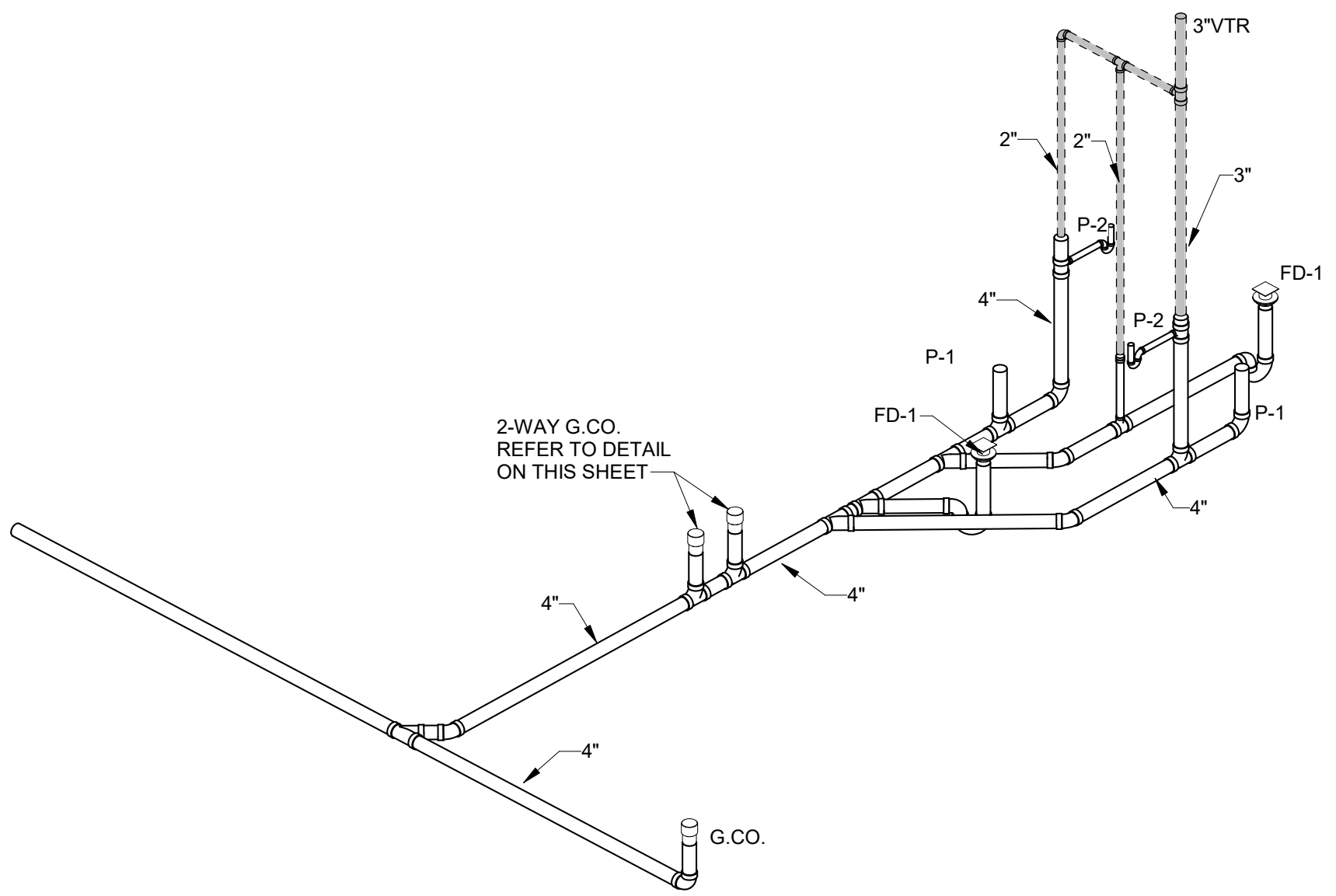
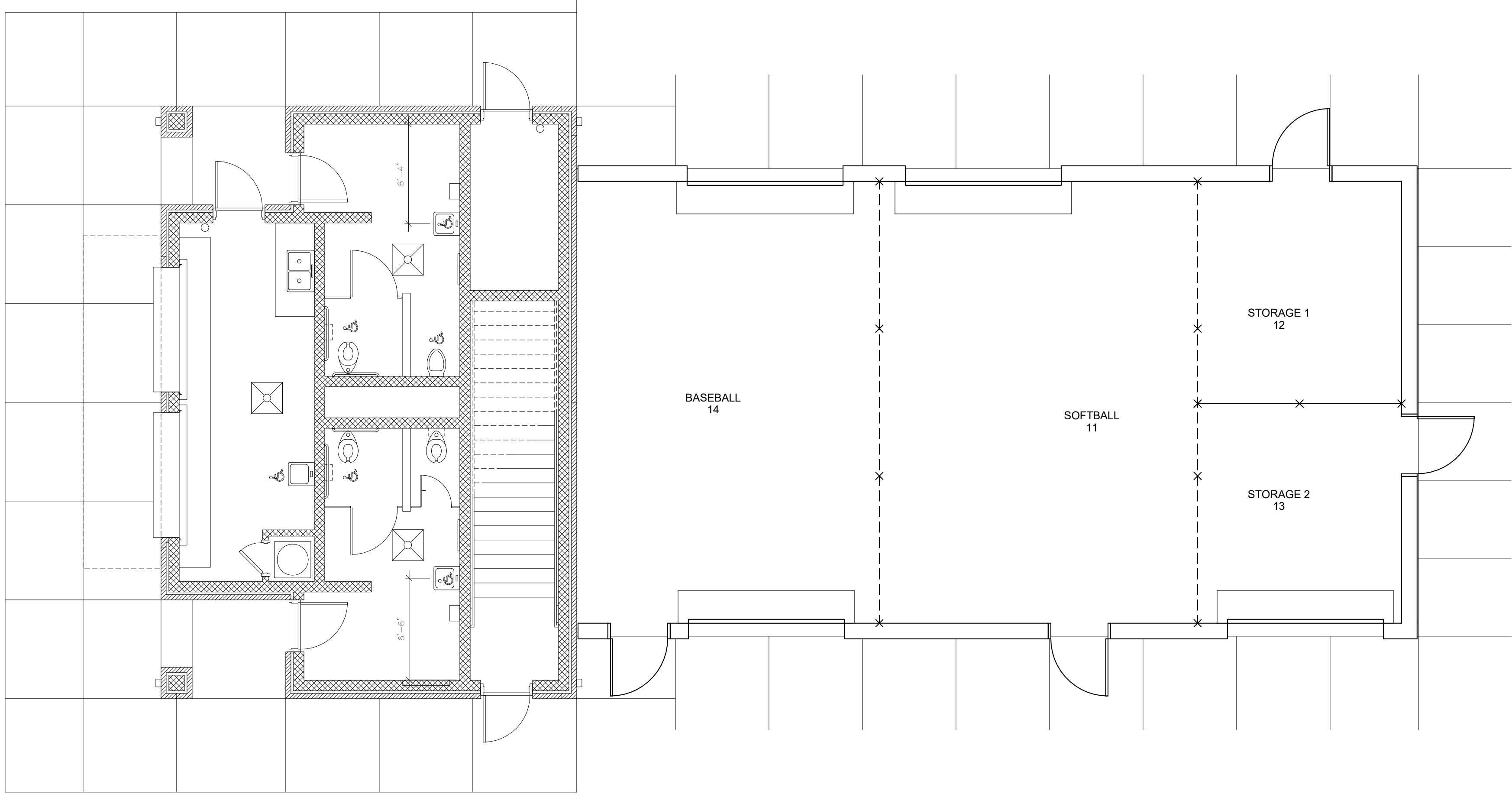
PROJECT: 2201-175620
DATE: 06/20/2018

DEMOLITION &
RENOVATION
PLANS -
PLUMBING -
WASTE/VENT

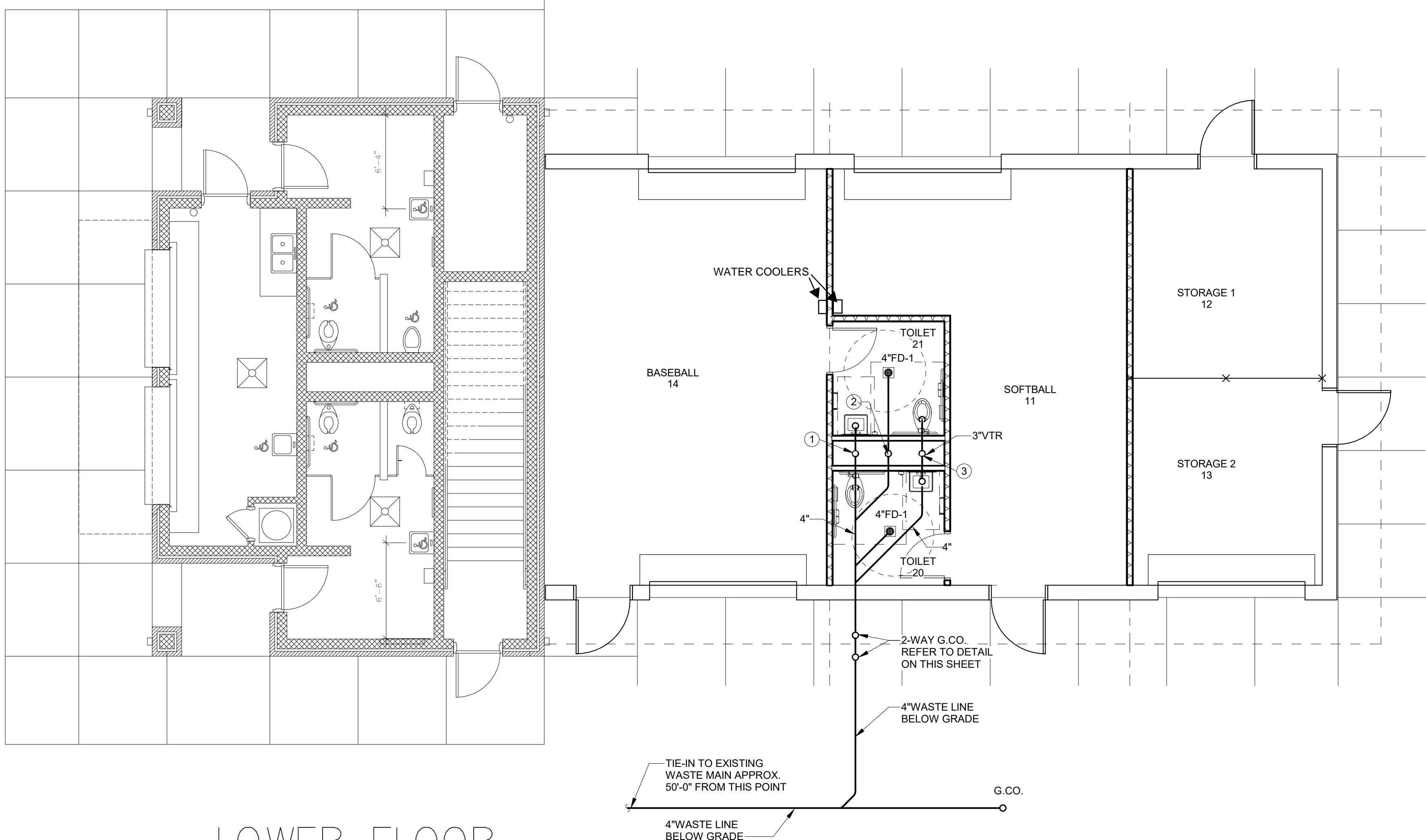
P-101A



C3 DEMOLITION FLOOR PLAN - PLUMBING - WASTE/VENT
3/16" = 1'-0"



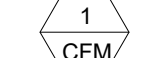
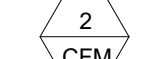
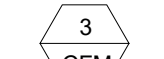
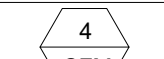
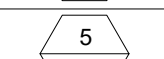

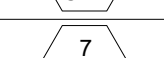
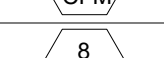
A1 PLUMBING RISER
3/16" = 1'-0"



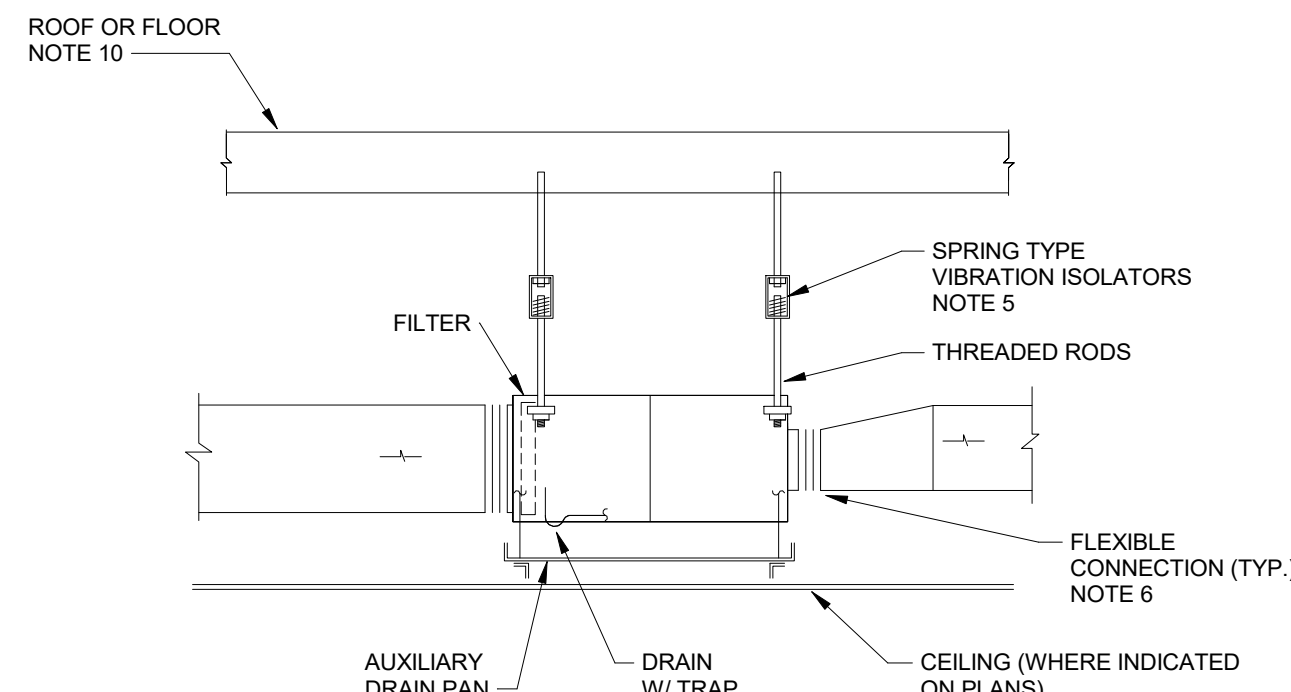
A3 RENOVATION FLOOR PLAN - PLUMBING - WASTE/VENT
3/16" = 1'-0"

C:\Users\mcdonald\Documents\18014 MECH_South Pointe HS Baseball Bldg RTV_dls.scharrap.rvt
6/20/2018 11:10:54 AM

LOUVERED CEILING AIR DISTRIBUTION SCHEDULE ^{(a)(e)}

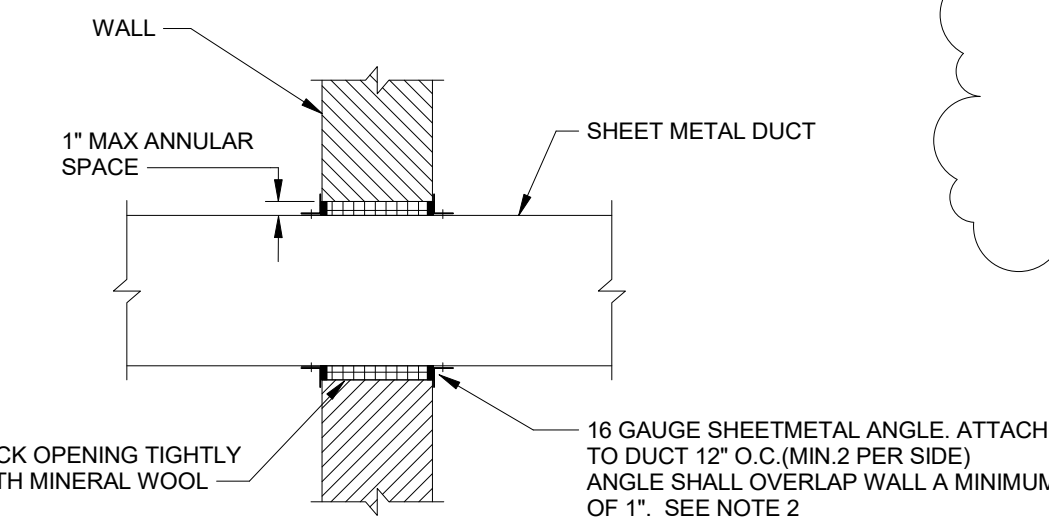
SYMBOL ^{(c)(d)}	CFM ^(g)	CONN. SIZE ^(b)	NC ^{(f)(i)}	PD ^{(h)(j)}	REMARKS
	0-99	6"ø	<15	.023	
	100-199	8"ø	<15	.037	
	200-299	10"ø	<15	.044	
	300-399	12"ø	<15	.04	
	400-599	14"ø	<15	.05	
	600-699	15"ø	<15	.06	
	700-899	15"ø	26	.11	
	-	-	-	-	FILTER RETURN GRILLE 20"x20" FILTER

- (a) LOUVERED FACE AIR DISTRIBUTION UNITS.
- (b) ALSO DUCT RUNOUT SIZE IN INCHES (UNLESS LARGER RUNOUT INDICATED ON PLANS) TRANSITION TO NECK IF NECK DIFFERENT SIZE.
- (c) LAY-IN TYPE UNITS SHALL HAVE 24"x24" FACE PANEL AND SHALL BE INDICATED BY AN "L" SUFFIX. SEE SPECIFICATIONS FOR DIMENSIONS OF NON LAY-IN TYPE UNITS.
- (d) UNITS WITH AN "T" SUFFIX SHALL BE TYPE SUITABLE FOR FIRE RATED CEILING/ ROOF/ FLOOR ASSEMBLIES. A NUMBER WILL ALSO BE SHOWN IF GREATER THAN 1 HOUR RATED.
- (e) GRILLES SHALL BE:
- LAY-IN SUPPLY: PRICE (A/SCD, TYPE 31 FRAME)
 - LAY-IN RETURN: PRICE (A/SCD, TYPE 31 FRAME)
 - SURFACE MTD SUPPLY/EXHAUST: PRICE (A/SCD, TYPE 31 FRAME)
 - SURFACE MTD RETURN/EXHAUST: PRICE (A/SCD, TYPE 31 FRAME)
 - FILTER RETURN GRILLE: PRICE 60FH
 - FINISH: WHITE
- (f) NC @ 10db ROOM ATTENUATION (Re: 10⁻¹ WATTS), 4 WAY THROW
- (g) CFM IS FOR GENERAL INFORMATION ONLY. SOME GRILLES MAY BE SIZED LARGER.
- (h) TOTAL PRESSURE(IN WG)
- (i) WITH 24"x24" PANEL



NOTES:

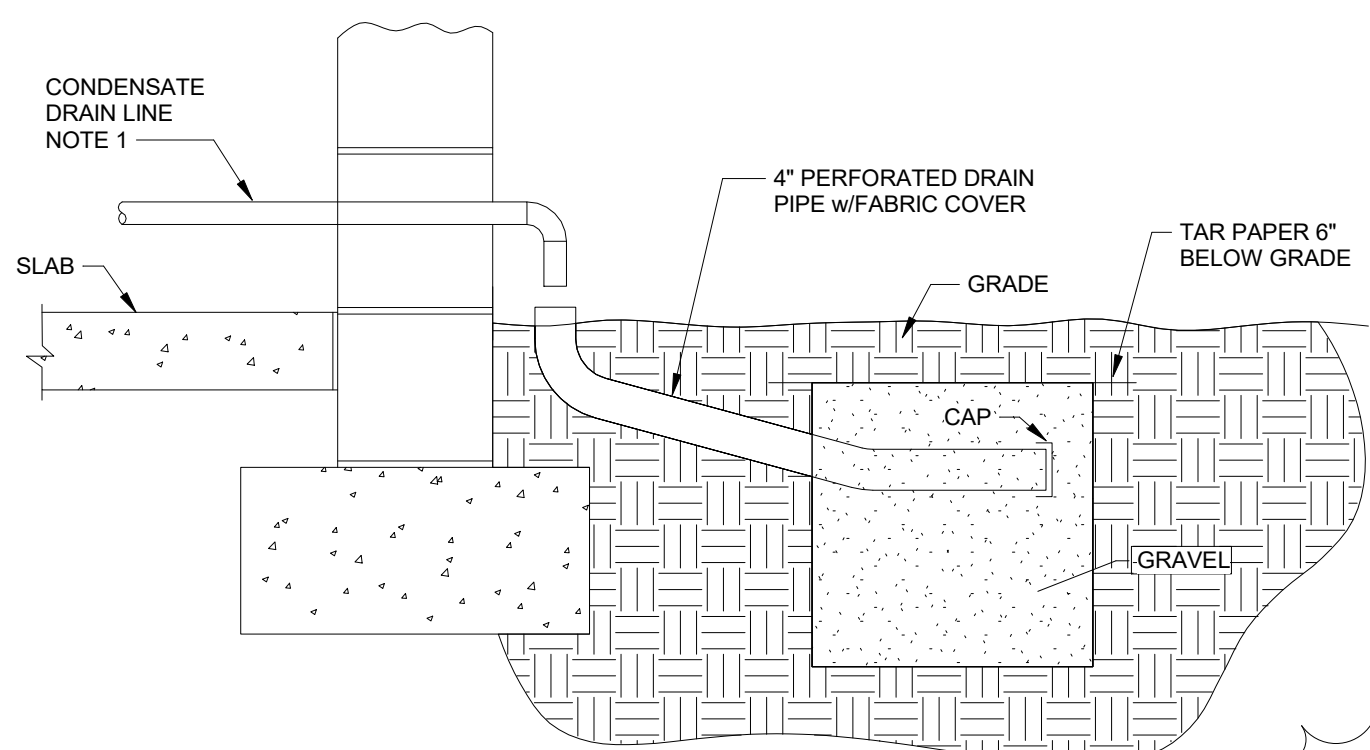
- SUPPORT FROM OTHER ROOF TYPES OR SLABS SIMILARLY.
- TRANSITION SUPPLY AND RETURN DUCT AS REQUIRED FOR CONNECTION TO AIR HANDLER.
- PROVIDE MANUFACTURERS RECOMMENDED CLEARANCE FOR MAINTENANCE OR CLEARANCE INDICATED ON PLANS, WHICHEVER IS GREATER.
- MOUNT UNIT TO MAINTAIN SLOPE ON DRAIN LINE.
- SPRING ISOLATORS REQUIRED WHERE SPECIFIED.
- FLEX CONNECTION FOR ALL UNITS WITH MOTORS.
- PROVIDE A FACTORY INSTALLED FILTER HOUSING WITH SIDE OR BOTTOM ACCESS AS REQUIRED.
- AUXILIARY DRAIN PAN REQUIRED ON ALL EQUIPMENT W/COOLING COIL OR WHERE CONDENSATION IS POSSIBLE, WHEN UNIT LOCATED ABOVE CEILING, IN ATTIC OR SIMILAR LOCATION.
- THREADED RODS FOR AUXILIARY DRAIN PAN CAN BE THE SAME AS THE UNIT SUPPORT RODS IF THEY CAN BE PROPERLY INSTALLED (I.E. WITHOUT BENDING, INTERFERING WITH UNIT ACCESS, ETC.). OTHERWISE THEY SHALL BE RUN SIMILAR TO UNIT SUPPORT RODS.
- SEE ARCHITECTURAL AND STRUCTURAL PLANS FOR ROOF OR FLOOR CONSTRUCTION.



NOTES:

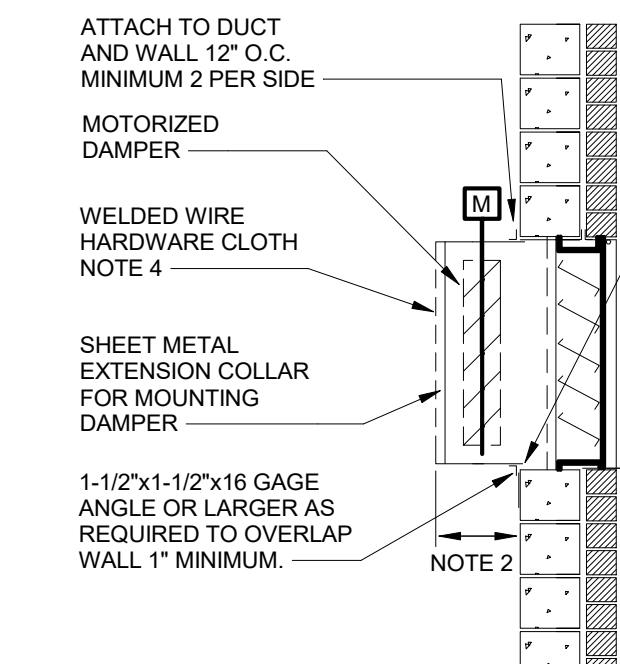
- BLANKET INSULATION WHERE SPECIFIED, SHALL BE INSTALLED OVER ANGLES AND SEALED TO WALL.
- THE FOLLOWING DUCTS SHALL NOT HAVE FASTENERS THROUGH THE DUCT:

 - GREASE DUCT SHALL HAVE ANGLES ATTACHED TO DUCT W/HIGH TEMPERATURE SEALANT.
 - FUME EXHAUST DUCT, WELDING EXHAUST DUCT, DUST COLLECTION DUCT OR SIMILAR SHALL HAVE ANGLES ATTACHED TO DUCT W/SEALANT.
 - ROUND OR OVAL DUCT WHERE SYSTEM PRESSURE IS 2" WG OR GREATER SHALL HAVE ANGLES ATTACHED TO DUCT W/SEALANT.
 - DRYER VENT SHALL HAVE ANGLES ATTACHED TO DUCT W/SEALANT.



NOTES:

- SEE PIPE THROUGH WALL DETAILS.
- DRYWELL SHALL BE 3 CF.



NOTES:

- SEE ARCHITECTURAL DRAWINGS FOR LOUVER SIZE AND ELEVATIONS.
- SEE PLAN FOR PLENUM DEPTH. IF NO DEPTH SHOWN, DEPTH SHALL BE 12" MIN OR AS REQUIRED FOR DAMPER BLADES TO OPERATE THRU 90 DEGREES WITHOUT STRIKING LOUVER, WHICHEVER IS GREATER.
- LOUVERS WITHOUT MOTORIZED DAMPERS INSTALLED SIMILARLY.
- SEE WIRE GRILLE DETAIL.
- PLENUM WITH DUCT CONNECTIONS ARE SIMILAR BUT WITH A FULL BACK PANEL IN LIEU OF WIRE GRILLE.
- PROVIDE A FULLY-HINGED ACCESS DOOR IN PLENUM AS SHOWN ON PLAN. IF NONE SHOWN, PROVIDE: 16"x16" MIN.

SPLIT SYSTEM HEAT PUMP SCHEDULE (DUCTLESS)

INDOOR UNIT (AIR HANDLER)							OUTDOOR UNIT										SYSTEM												REMARKS				
INDOOR HP #	CFM		EXT* SP(a)	MAX WEIGHT #	ELECTRIC		MANUFACTURER AND MODEL	OUTDOOR HP #	OUTDOOR DB T	FANS		COMPRESSOR	ELECTRIC			MAX WEIGHT #	MANUFACTURER AND MODEL	COOLING COIL CAPACITY						HEATING COIL CAPACITY									
	TOT	OA			MCA	VOLT/PH				W	NO		NO	RLA	MCA			MOC/P	VOLT/PH	MBH (NET) TOT	SENS	OUTDOOR DB T	ENT AIR		LVG AIR		SEER(b)	ENT T		17 F		47 F	
																							DB	WB	DB	WB				MBH	COP	MBH	COP
IDHP-1	777	-	-	60	-	208/1	mitsubishi PKA-A24	ODHP-1	95	75	1	1	12	18	30	208/1	200	mitsubishi PUZ-A24	24	18.5	95	80	67	-	-	17	70	18	2.4	26	3.3	(4)(6)(7)	
IDHP-2	777	-	-	60	-	208/1	mitsubishi PKA-A24	ODHP-2	95	75	1	1	12	18	30	208/1	200	mitsubishi PUZ-A24	24	18.5	95	80	67	-	-	17	70	18	2.4	26	3.3	(4)(6)(7)	

*ESP INCLUDES DUCT, GRILLES, AND LOADED FILTERS (a) INCHES WG (b) @ ARI CONDITIONS

- (1) PROVIDE START CAPACITOR FOR SINGLE PHASE UNITS (3) FACTORY MOUNTED CONDENSATE PUMP (5) CEILING MOUNTED RECESSED INDOOR UNIT (7) THERMOSTAT INTERFACE TO ALLOW BMS CONTROL
- (2) LOW AMBIENT CONTROL TO 0°F (4) POWER INDOOR UNIT FROM OUTDOOR UNIT (6) WALL MOUNTED INDOOR UNIT

FAN SCHEDULE

FAN #	LOCATION	SERVICE	CFM	ESP	MAX HP	RPM	MAX * SONES	MAX WEIGHT #	ELECT VOLT/PH	CONTROL	MANUFACTURER AND MODEL	REMARKS
EF-1	STORAGE 1	STORAGE 1,2	300	25	1/12	1348	5.7	50	115/1	BMS	GREENHECK SQ-45-D	(3)(6)(10)(14)(15)(18)
CEF-1	TOILET 21	TOILET 21	110	25	-	1061	.6	50	115/1	LIGHT SWITCH	GREENHECK SP-A125	(4)(6)(10)(18)
CEF-2	TOILET 20	TOILET 20	110	25	-	1061	.6	50	115/1	LIGHT SWITCH	GREENHECK SP-A125	(4)(6)(10)(18)
SF-1	BASEBALL 14	BASEBALL 14	4400	-	1/3	1100	-	50	120/1	WALL SWITCH	AIRMASTER 24" CA24OW	(19)(20)(21)(22)
SF-2	SOFTBALL 11	SOFTBALL 11	4400	-	1/3	1100	-	50	120/1	WALL SWITCH	AIRMASTER 24" CA24OW	(19)(20)(21)(22)

* SOUND LEVEL DOES NOT INCLUDE ANY UNIT ACOUSTICAL OPTIONS

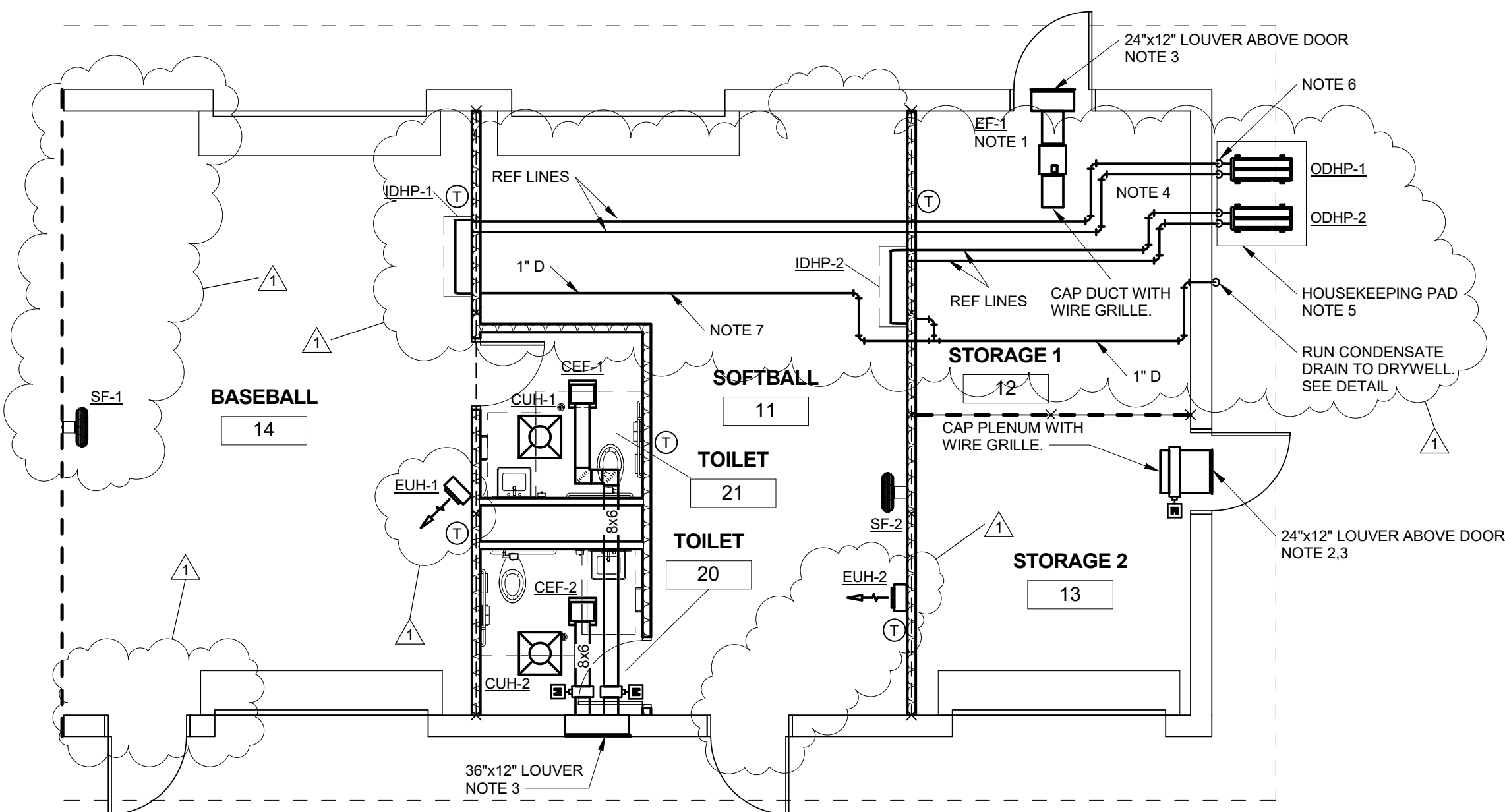
- (1) ROOFTOP FAN (5) SIDEWALL FAN (9) BIRDSCREEN (13) MOUNTING COLLAR (17) ACOUSTICAL HOUSING (21) WALL BRACKET
- (2) UPBLAST FAN (6) DIRECT DRIVE (10) DISCONNECT SWITCH (14) MOTORIZED DAMPER (18) FAN SPEED CONTROLLER (22) 3 SPEED
- (3) INLINE FAN (7) BELT DRIVE (11) ROOFCURB (15) ISOLATION KIT (19) OSCILLATING FAN
- (4) CEILING CENT. FAN (8) BACKDRAFT DAMPER (12) MOTOR SIDE FAN GUARD (16) INVERTER DUTY MOTORS (20) PLUG CONNECTION

ELECTRIC UNIT HEATER SCHEDULE

HEATER #	LOCATION	CFM	KW	MTG HEIGHT (a)	MAX WEIGHT #	HP	ELECT VOLT/PH	MANUFACTURER AND MODEL	REMARKS
EUH-1	BASEBALL 14	400	3.3	9	40	-	208/1	MARKEL 5100	(2)(4)(6)(7)
EUH-2	SOFTBALL 11	400	3.3	9	40	-	208/1	MARKEL 5100	(2)(4)(6)(7)
CUH-1	TOILET 21	175	1.5	-	30	-	120/1	MARKEL 3380	(2)(3)(4)(6)
CUH-2	TOILET 20	175	1.5	-	30	-	120/1	MARKEL 3380	(2)(3)(4)(6)

(a) FEET AFF TO BOTTOM OF UNIT

- (1) HORIZONTAL (4) DISCONNECT SWITCH (7) WALL MOUNTED THERMOSTAT BY CONTROLS CONTRACTOR
- (2) VERTICAL (5) DEFLECTOR
- (3) BUILT IN T'STAT (6) WALL BRACKET



SEQUENCE OF OPERATIONS

- EF-1 SHALL ENERGIZE WHEN THE SPACE TEMPERATURE RISES ABOVE THE HIGH LIMIT SETPOINT. THE CORRESPONDING MOTORIZED DAMPER SHALL OPEN AFTER THE SPACE TEMPERATURE FALLS BELOW THE SETPOINT FOR THE MINIMUM AMOUNT OF RUNTIME (15 MIN ADJ.) THE FAN WILL DEENERGIZE AND THE MOTORIZED DAMPER WILL CLOSE.
- IDHP-1 AND IDHP-2 SHALL BE CONTROLLED BY THE BMS THROUGH A THIRD PARTY THERMOSTAT AND THERMOSTAT INTERFACE. UPON CALL FOR HEATING OR COOLING THE UNIT WILL OPERATE IN THE APPROPRIATE MODE DURING UNOCCUPIED TIMES THE UNIT WILL OPERATE ACCORDING TO THE HEATING AND COOLING SETBACK TEMPERATURES.
- HEATERS SHALL BE ENERGIZED WHEN THE SPACE TEMPERATURE FALLS BELOW THE HEATING LOW LIMIT SETPOINT.

ROCK HILL SCHOOLS

SOUTH POINTE HIGH SCHOOL ATHLETIC PROJECTS (BASEBALL BUILDING RENOVATION)

Buford Goff & Associates, Inc. Engineers & Planners

1331 Elmwood Ave. Suite 200 Columbia, SC 29201 Phone: (803) 254 - 6302

LS3P

701-A LADY STREET COLUMBIA, SOUTH CAROLINA 29201 TEL. 803.765.2410 FAX 803.765.2419 WWW.LS3P.COM

MEMBERS OF THE AMERICAN INSTITUTE OF ARCHITECTS
COPYRIGHT 2017 ALL RIGHTS RESERVED
PRINTED OR ELECTRONIC DRAWINGS AND DOCUMENTATION MAY NOT BE REPRODUCED IN ANY FORM WITHOUT WRITTEN PERMISSION FROM LS3P ASSOCIATES LTD.

REVISIONS:

No.	Description	Date
1	HVAC REVISIONS	06/18/2018

INCORPORATED IN TO RHS 06/20/2018
BID DOCUMENTS

PROJECT: 2201-175620
DATE: 03/06/2018

HVAC RENOVATION PLAN

M101

C:\Users\angle\Documents\ELE_South Point HS Baseball Bldg_RVT_2017_angle.morrisson.rvt
6/20/2018 10:35:04 AM

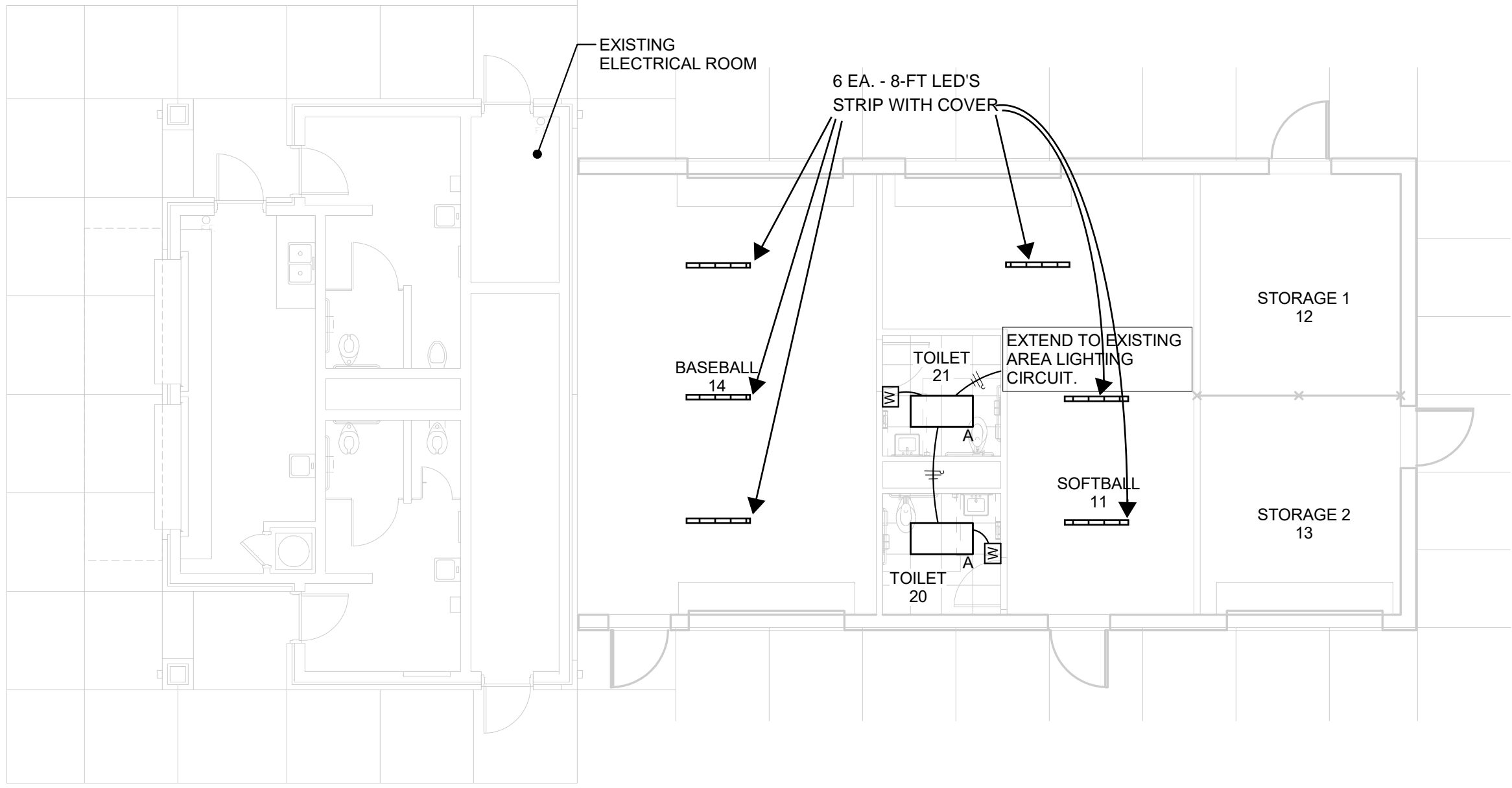
E

D

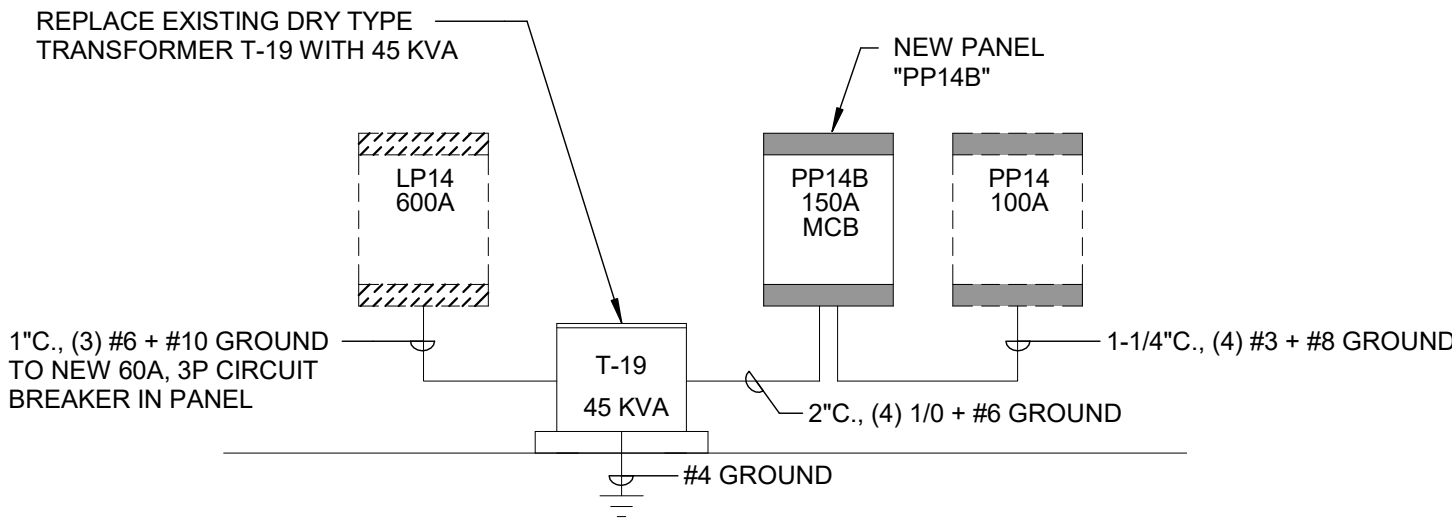
C

B

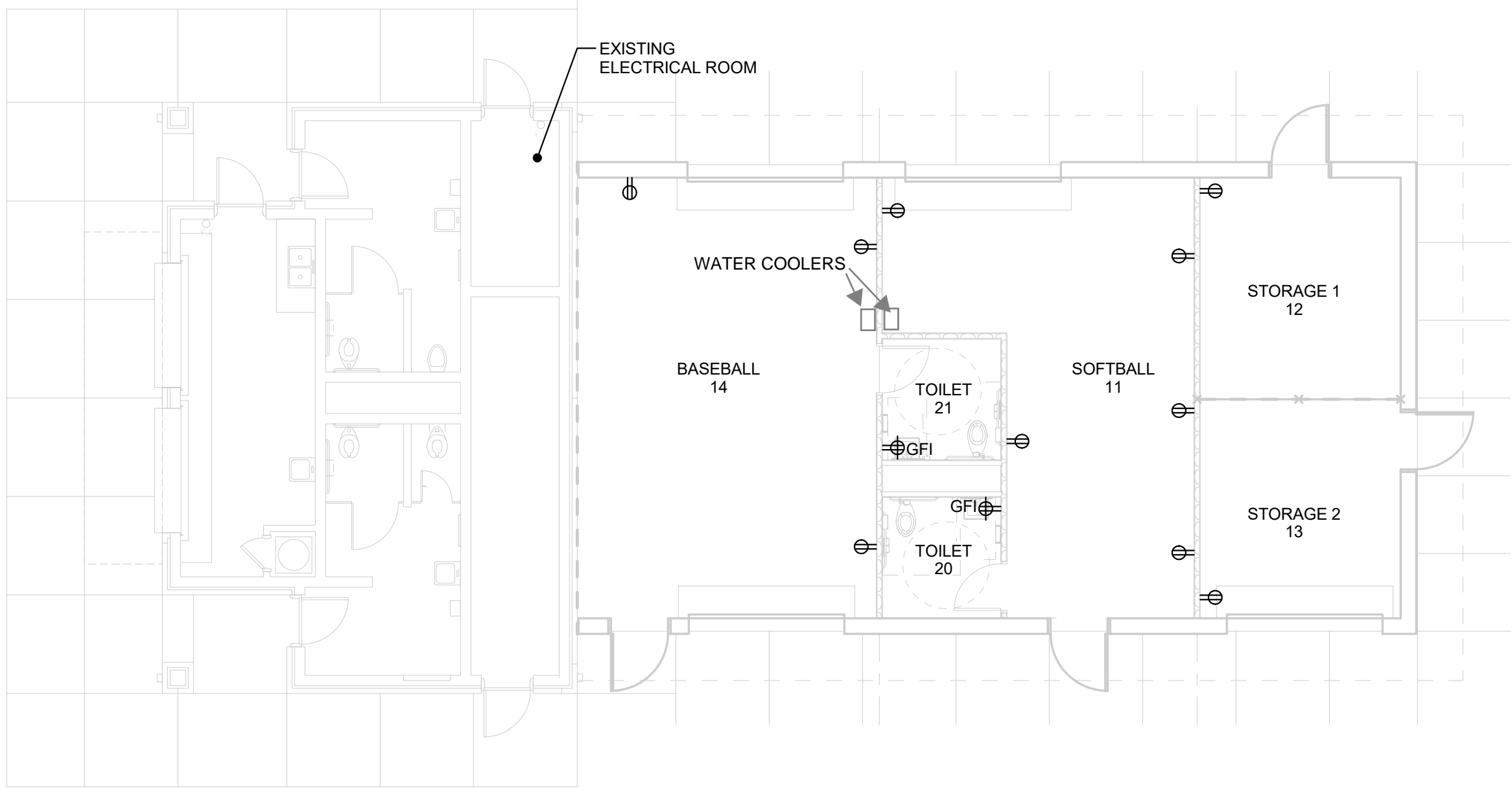
A



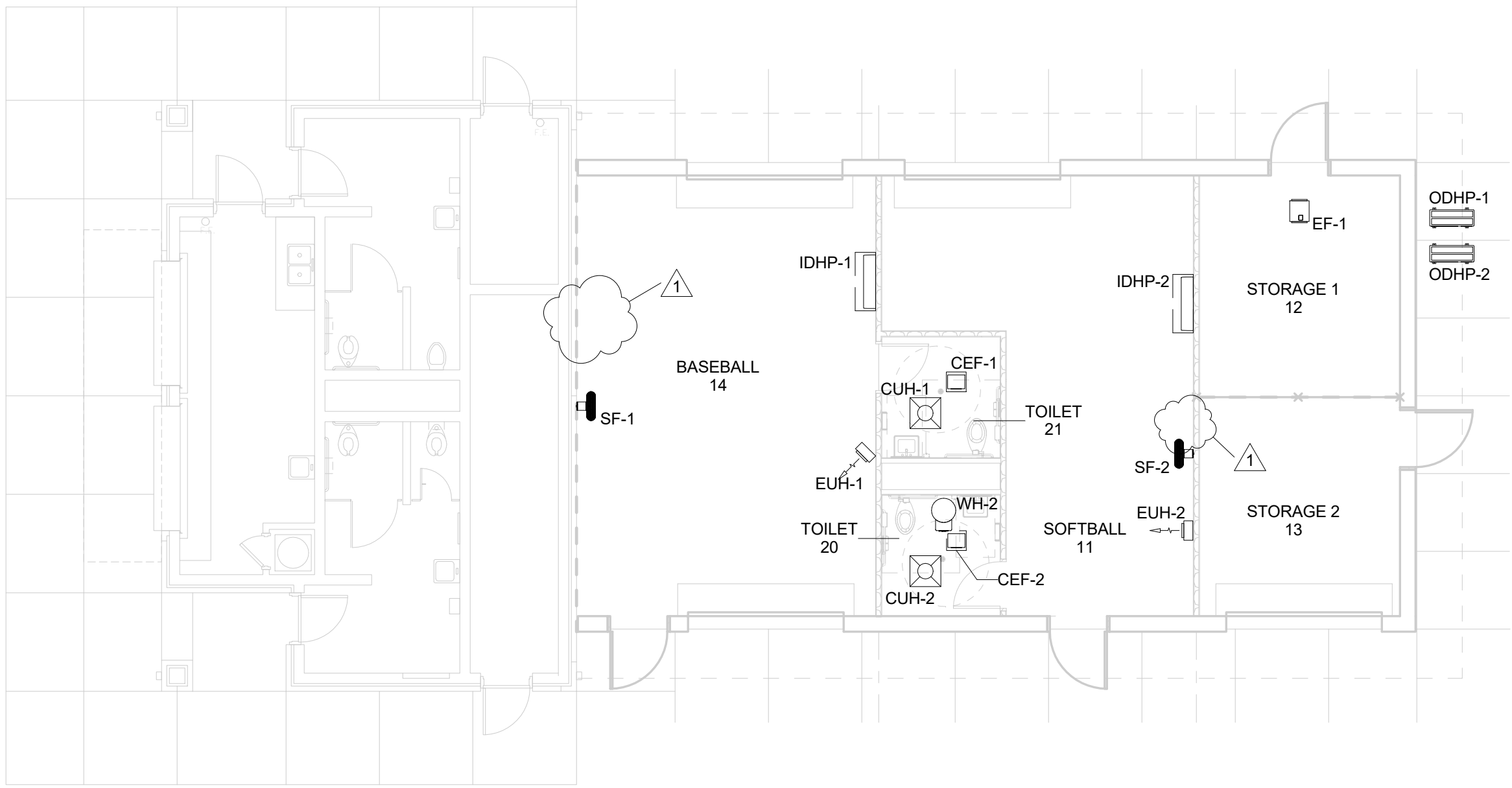
D3 1ST FLOOR RENOVATION PLAN - LIGHTING
1/8" = 1'-0"



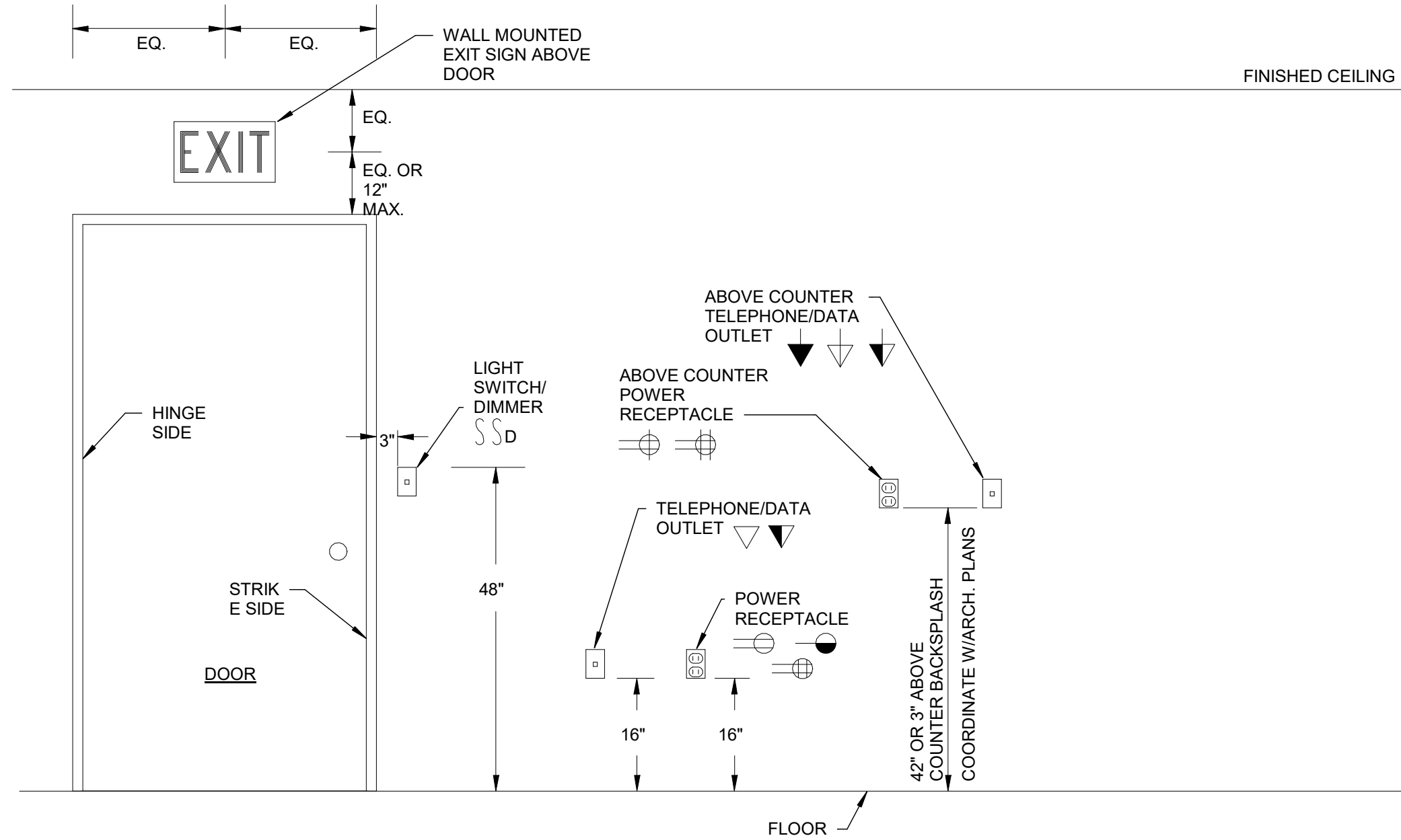
C1 POWER RISER DIAGRAM
NTS



C3 1ST FLOOR RENOVATION PLAN - ELECTRICAL
1/8" = 1'-0"



A2 1ST FLOOR RENOVATION PLAN - EQUIPMENT CONNECTIONS
1/8" = 1'-0"



A4 ELECTRICAL DEVICE MOUNTING HEIGHT DETAIL
NTS

ELECTRICAL SYMBOL LEGEND

SYMBOL	DESCRIPTION
A -	LIGHTING FIXTURE
A ○	LIGHTING FIXTURE - CEILING MOUNTED
A ○-	LIGHTING FIXTURE - WALL OR BRACKET MOUNTED
⬢	EXIT LIGHT - CEILING MOUNTED ARROWS AS INDICATED ON PLANS
⬢	EXIT LIGHT WALL MOUNTED ARROWS AS INDICATED ON PLANS
⬢	LIGHTING FIXTURE WITH EMERGENCY BATTERY BACKUP
①	AUTOMATIC LIGHTING CONTROL CEILING MOUNTED OCCUPANCY SENSOR, WATTSTOPPER PART # DT-355
⌚	TOGGLE SWITCH, SINGLE POLE
⌚	RECEPTACLE, 20A DUPLEX
GFI ⌚	RECEPTACLE, 20A DUPLEX, GROUND FAULT INTERRUPTER
WP ⌚	RECEPTACLE, 20A DUPLEX, GROUND FAULT INTERRUPTER WITH WEATHER PROOF COVER
Ⓜ	JUNCTION BOX, WALL MOUNTED. SIZE PER NEC UNLESS SIZE NOTED
Ⓜ	JUNCTION BOX, ABOVE FINISHED CEILING. SIZE PER NEC UNLESS SIZE NOTED
■	ELECTRICAL PANELBOARD, 208V OR 240V
■	ELECTRICAL PANELBOARD, 480V
□	DISCONNECT OR SAFETY SWITCH. LABEL REFERS TO DISCONNECT SWITCH SCHEDULE
///	CROSSHATCHING EXISTING EQUIPMENT INDICATES EQUIPMENT REMOVAL
- - -	DASHED EQUIPMENT INDICATES EXISTING EQUIPMENT TO REMAIN
▽	TELEPHONE OUTLET, FLUSH MOUNTED IN FLOOR, 1" E.C. UP TO ACCESSIBLE CEILING
▽	TELEPHONE OUTLET, 54" AFF OR 8" ABOVE BACKSPLASH, 1" E.C. TO ACCESSIBLE CEILING
▽	DATA OUTLET WITH 1" E.C. UP TO ACCESSIBLE CEILING
▽	COMBINATION TELE/DATA OUTLET WITH 1 1/4" E.C. UP TO ACCESSIBLE CEILING
▽	DATA OUTLET FOR WIRELESS ACCESS POINT
Ⓢ	SPEAKER OUTLET, CEILING MOUNTED
Ⓢ	SPEAKER OUTLET, WALL MOUNTED
Ⓢ	CARD READER
Ⓢ	CCTV SURVEILLANCE CAMERA
AFF	ABOVE FINISHED FLOOR
AFG	ABOVE FINISHED GRADE
C.	CONDUIT
E.C.	EMPTY CONDUIT
RT	RAINTIGHT (NEMA 3R)
WP	WEATHER PROOF
KEYNOTE LABEL	
•	CONDUIT RUN, VERTICAL
—	CONDUIT - HOMERUN, TICK MARKS INDICATE NUMBER OF CONDUCTORS
—	CONDUIT RUN CONCEALED OVERHEAD OR IN WALLS
—	CONDUIT RUN EXPOSED
—	CONDUIT RUN IN OR UNDER FLOOR SLAB OR UNDERGROUND
×	EQUIPMENT CONNECTION

ROCK HILL SCHOOLS

SOUTH POINTE HIGH SCHOOL ATHLETIC PROJECTS (BASEBALL BUILDING RENOVATION)

MEMBERS OF THE AMERICAN INSTITUTE OF ARCHITECTS

COPYRIGHT 2017 ALL RIGHTS RESERVED
PRINTED OR ELECTRONIC DRAWINGS AND DOCUMENTATION MAY NOT BE REPRODUCED IN ANY FORM WITHOUT WRITTEN PERMISSION FROM LS3P ASSOCIATES LTD.

REVISIONS:

No.	Description	Date
-----	-------------	------

PROJECT: 2201-175620
DATE: 06/20/2018

ELECTRICAL FLOOR PLANS, SCHEDULES & DETAILS

E-101