

CONSTRUCTION DOCUMENTS FOR

MAY RIVER RD PHASE II STREETSCAPE

LANDSCAPE PLANS

TOWN OF BLUFFTON, SOUTH CAROLINA

JUNE 22, 2016

REVISION JUNE 27, 2016

REVISION SEPTEMBER 28, 2016

REVISION OCTOBER 17, 2016

REVISION November 14, 2016

REVISION November 23, 2016

REVISION December 12, 2016

REVISION March 13, 2017

REVISION April 24, 2017

REVISION May 26, 2017

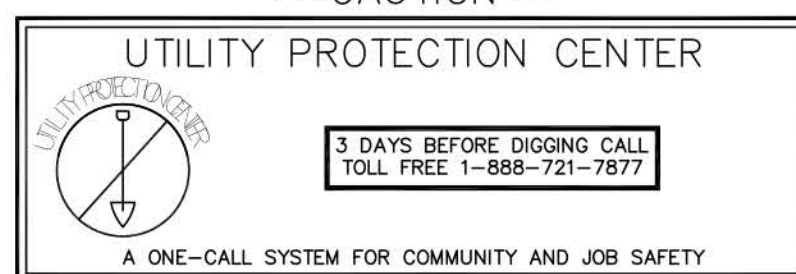
REVISION July 5, 2017

N/F
STOCK FARM DEVELOPMENT, LLC.
R610-039-1530

SHEET INDEX

C6	COVER SHEET
S1	SHEET LAYOUT
L1	LANDSCAPE PLAN
L2	LANDSCAPE PLAN
L3	LANDSCAPE PLAN
L4	LANDSCAPE PLAN
L5	LANDSCAPE PLAN
L6	LANDSCAPE PLAN
L7	LANDSCAPE PLAN
L8	LANDSCAPE PLAN
L9	LANDSCAPE PLAN
L10	LANDSCAPE PLAN
P6	PLANT SCHEDULE
D1	DETAILS - SITE FURNISHINGS
D2	DETAILS - LIVING FENCE
I	IRRIGATION AREA OF COVERAGE
2 & 3	SPRAY IRRIGATION LAYOUT
4-6	DRIP IRRIGATION LAYOUT
7-9	IRRIGATION SLEEVES LAYOUT
D2	IRRIGATION DETAILS

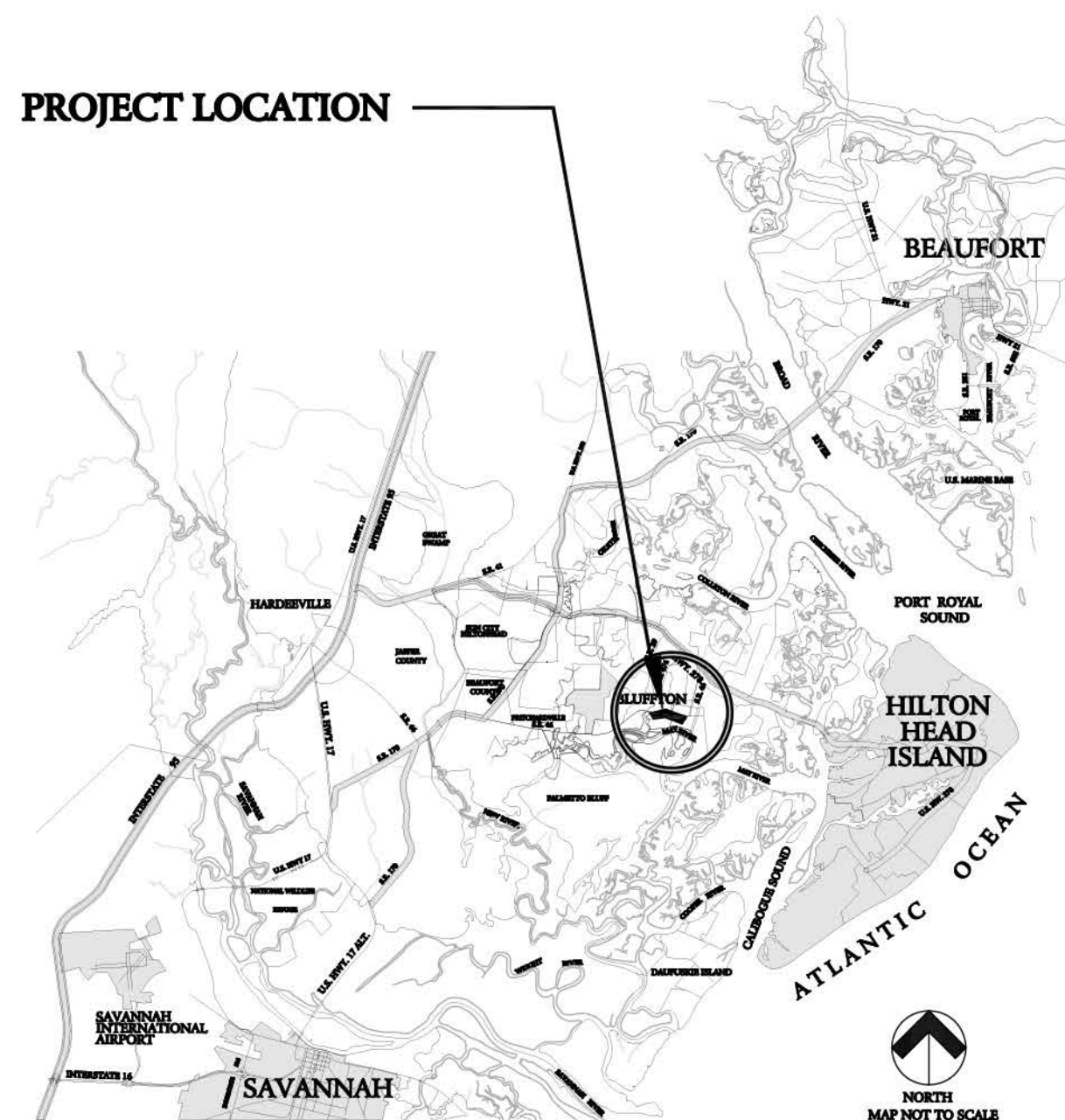
CAUTION



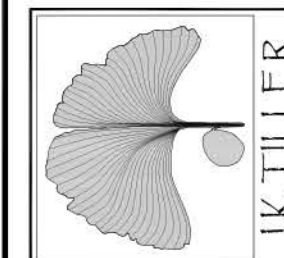
GENERAL NOTES:

- ALL NOTES APPLY TO ALL DRAWINGS AND ALL TRADES.
- THIS IS A DESIGN DEVELOPMENT SET USED TO DESCRIBE THE DESIGN INTENT ONLY. ALL CONSTRUCTION DETAILS, LAYOUT, GRADING, UTILITIES, PROPERTY LINES, ETC. MUST BE FIELD VERIFIED WITH ANY DISCREPANCIES REPORTED TO THE OWNER OR OWNER'S REPRESENTATIVE. ALL CONSTRUCTION MUST ADHERE TO ALL NATIONAL, STATE AND LOCAL CODES. JK TILLER ASSOCIATES, INC. IS NOT RESPONSIBLE FOR ANY WRONGFUL CONSTRUCTION PRACTICES.
- ALL SURVEY AND SITE INFORMATION WERE COMPILED FROM A VARIETY OF UNVERIFIED SOURCES AT VARIOUS TIMES. SITE INFORMATION MUST BE FIELD VERIFIED BEFORE CONSTRUCTION BEGINS. REPORT ANY DISCREPANCIES TO THE OWNER OR OWNER'S REPRESENTATIVE.
- ALL SURVEY AND SITE INFORMATION HAS BEEN OBTAINED FROM THOMAS & HUTTON ENGINEERING ON SEPTEMBER 19, 2016.
- IT IS THE RESPONSIBILITY OF ALL CONTRACTORS AND TRADES TO COORDINATE THE INSTALLATION OF THEIR WORK WITH THE INSTALLATION OF WORK BY ALL OTHER CONTRACTORS AND TRADES.
- THE REQUIREMENTS OF THE SPECIFICATIONS, DRAWINGS, GENERAL REQUIREMENTS, AND ALL ITEMS OF THE CONTRACT DOCUMENTS ARE EQUALLY BINDING FOR ALL CONTRACTORS AND TRADES.
- EACH CONTRACTOR IS REQUIRED TO MAINTAIN FULL SETS OF THE CONTRACT DOCUMENTS FOR HIS EMPLOYEES USE ON THE PROJECT TO ASSURE THAT ALL WORK IS PROPERLY COORDINATED AND FOR REVIEWS BY COUNTY AND / OR MUNICIPALITY OFFICIALS FOR INSPECTIONS.
- THE CONTRACTOR IS RESPONSIBLE FOR ALL PERMITS AND INSPECTIONS AS REQUIRED BY LOCAL PLANNING, ZONING AND BUILDING CODE AUTHORITIES.
- JK TILLER ASSOCIATES, INC., THE OWNER'S AND / OR OWNER'S REPRESENTATIVE SHALL BE NOTIFIED OF ANY SITE CONDITIONS WHICH MAY NECESSITATE MODIFICATION TO THE PLAN. THE OWNER OR OWNER'S REPRESENTATIVE SHALL, IF NECESSARY, MAKE 'INFIELD MODIFICATIONS'.
- THE CONTRACTOR IS RESPONSIBLE FOR LOCATING ALL EXISTING UTILITIES AND FOR ANY DAMAGE AND MAKE REPAIRS THAT MAY OCCUR TO EXISTING UTILITIES IN ACCORDANCE WITH THE UTILITY REQUIREMENTS.
- THE CONTRACTOR SHALL PROTECT ALL TREES AND VEGETATION THAT IS NOT SCHEDULED TO BE REMOVED.
- THE OWNER MAY REQUIRE FLAG MEN TO BE AVAILABLE DURING THE CONSTRUCTION PROCESS.
- ALL WORKMANSHIP AND INSTALLATION FOR ALL TRADES SHALL MEET OR EXCEED THE PRODUCT MANUFACTURER'S RECOMMENDATIONS AND/OR ALL NATIONAL, STATE, AND LOCAL CODES.
- ANY DEVIATION FROM THESE PLANS MUST BE SPECIFICALLY APPROVED BY JK TILLER ASSOCIATES, INC. AND THE OWNER OR OWNER'S REPRESENTATIVE.

PROJECT LOCATION



JKT JOB NUMBER: 201613-01



May River Road Phase II Streetscape
LANDSCAPE PLANS
Beaufort County, South Carolina

Sheet Title:
Cover Sheet

Job Number:
201613-01

Date:

Drawn:
JK

Approved:

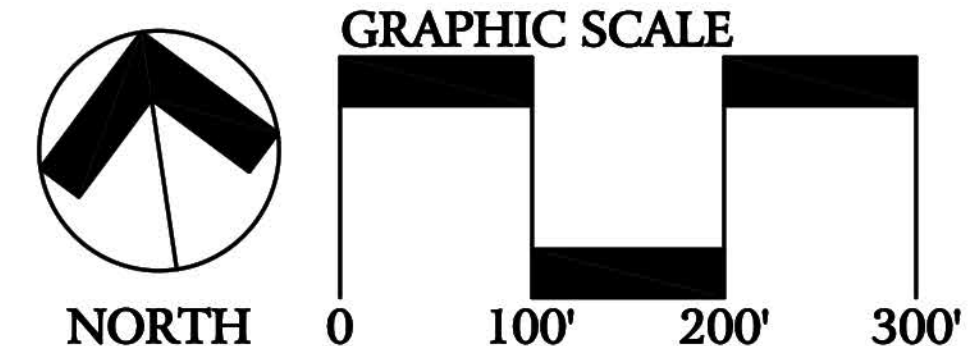
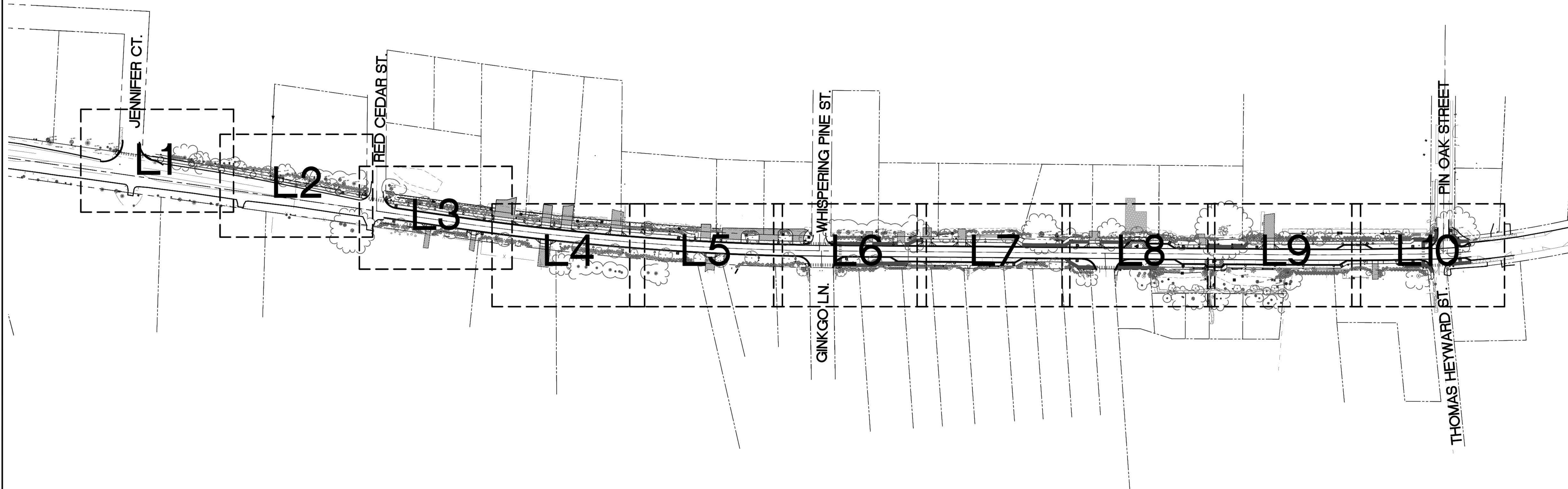
Revisions:

Sheet

CS
of 15

J. K. TILLER ASSOCIATES, INC.
LAND PLANNING
181 BLUFFTON ROAD, SUITE F203
BLUFFTON, SC 29910
Voice 843.815.4800
jtiller@jtiller.com
Fax 843.815.4802

LANDSCAPE ARCHITECTURE
BLUFFTON, SC 29910
Voice 843.815.4800
jtiller@jtiller.com
Fax 843.815.4802



May River Road Phase II Streetscape
LANDSCAPE PLANS
 Town of Bluffton, South Carolina

Sheet Title:
 Sheet Layout

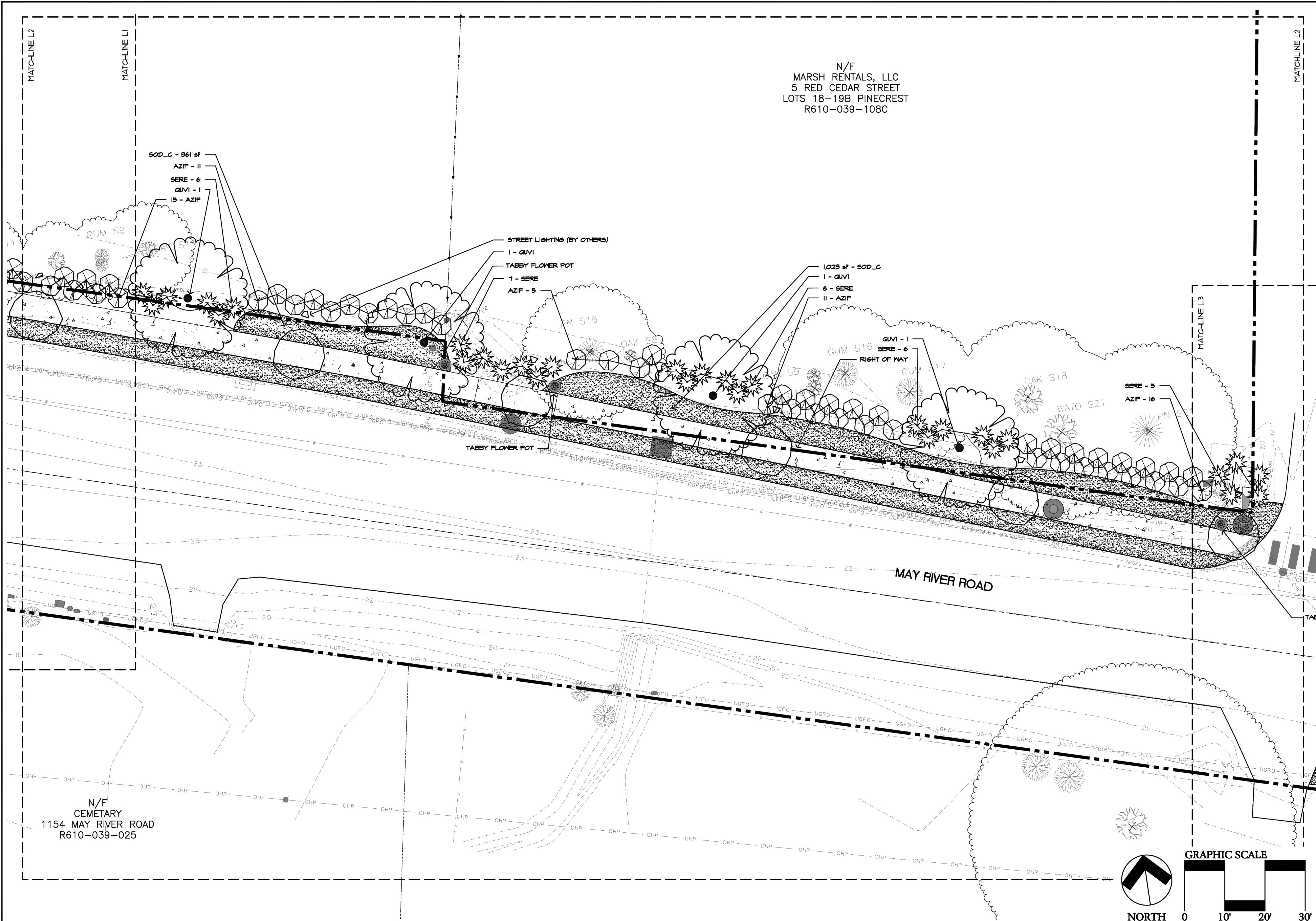
Job Number:
 201613-01

Date:
 June 22, 2016

Drawn:
 KD, JT

Approved:

Revisions:
 June 27, 2016
 August 11, 2016
 September 28, 2016
 November 14, 2016
 November 23, 2016
 December 12, 2016
 March 13, 2017
 July 5, 2017



J. K. TILLER ASSOCIATES, INC.
 LANDSCAPE ARCHITECTURE
 181 BLUFFTON ROAD, SUITE F203
 BLUFFTON, SC 29910
 Voice 843.815.4800
 jtiller@ktiller.com

May River Road Phase II Streetscape
 LANDSCAPE PLANS
 Town of Bluffton, South Carolina

Sheet Title:
Planting Plan

Job Number:
201613-01

Date:
June 22, 2016

Drawn:
KD, JT

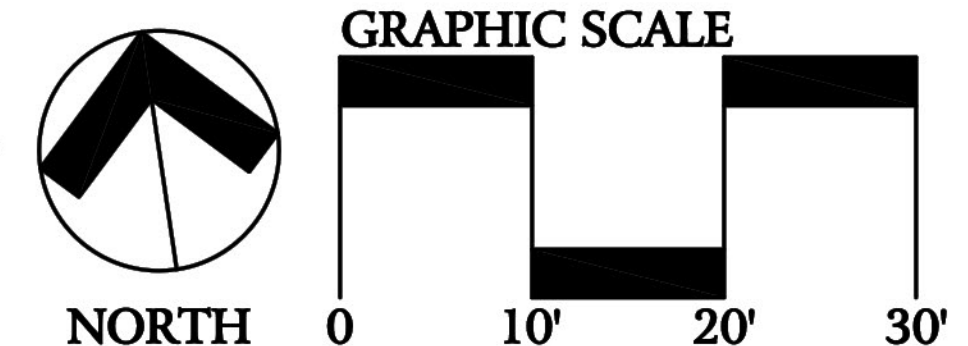
Approved:

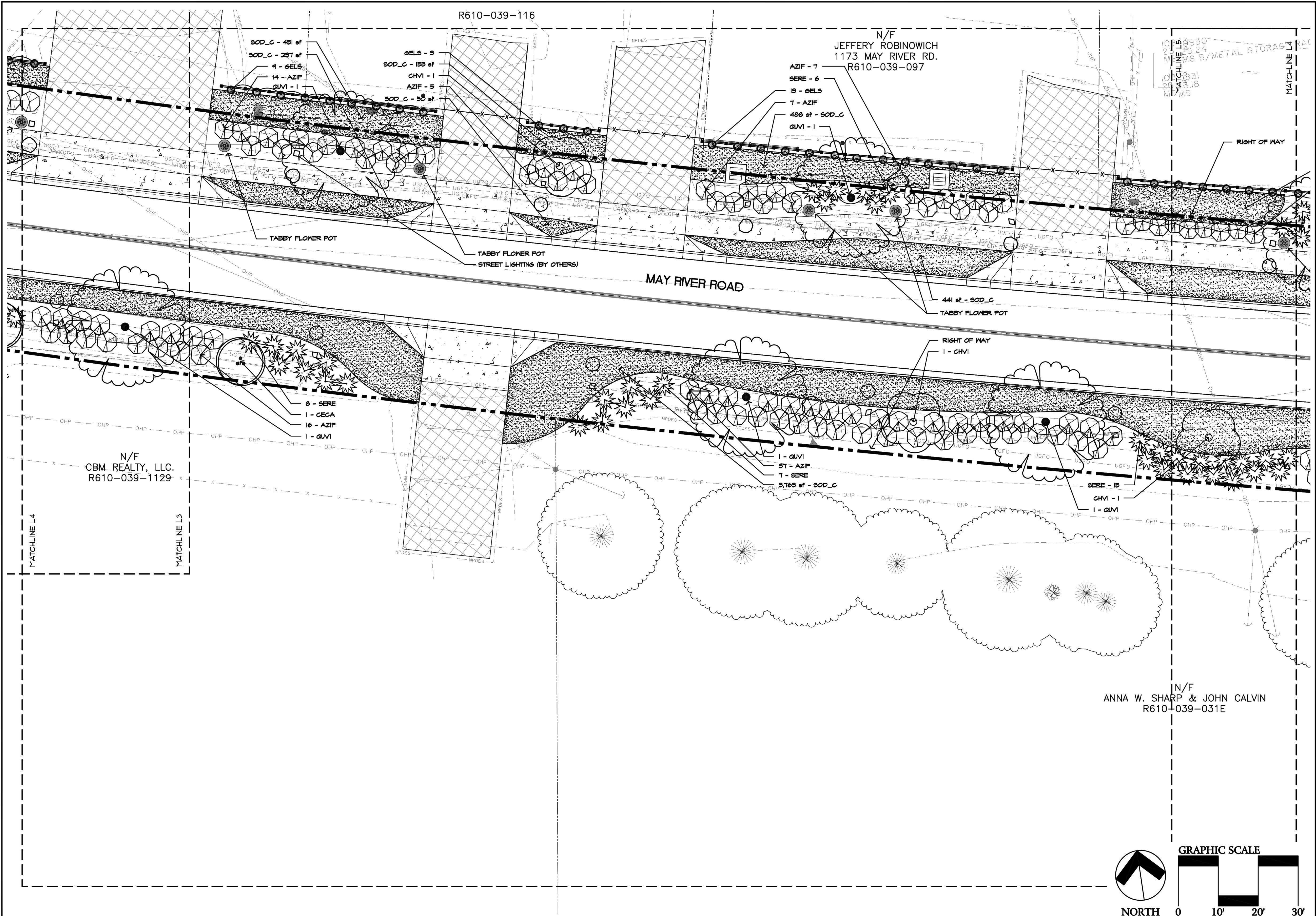
Revisions:
 June 27, 2016
 August 11, 2016
 September 28, 2016
 November 14, 2016
 November 23, 2016
 December 12, 2016
 March 13, 2017
 April 24, 2017
 July 5, 2017

Sheet

L2

Of 15





J. K. TILLER ASSOCIATES, INC.
LANDSCAPE ARCHITECTURE
181 BLUFFTON ROAD, SUITE F203
BLUFFTON, SC 29910
Voice 843.815.4800
jtiller@jktiller.com

May River Road Phase II Streetscape
LANDSCAPE PLANS
Town of Bluffton, South Carolina

Sheet Title:
Planting Plan

Job Number:
201613-01

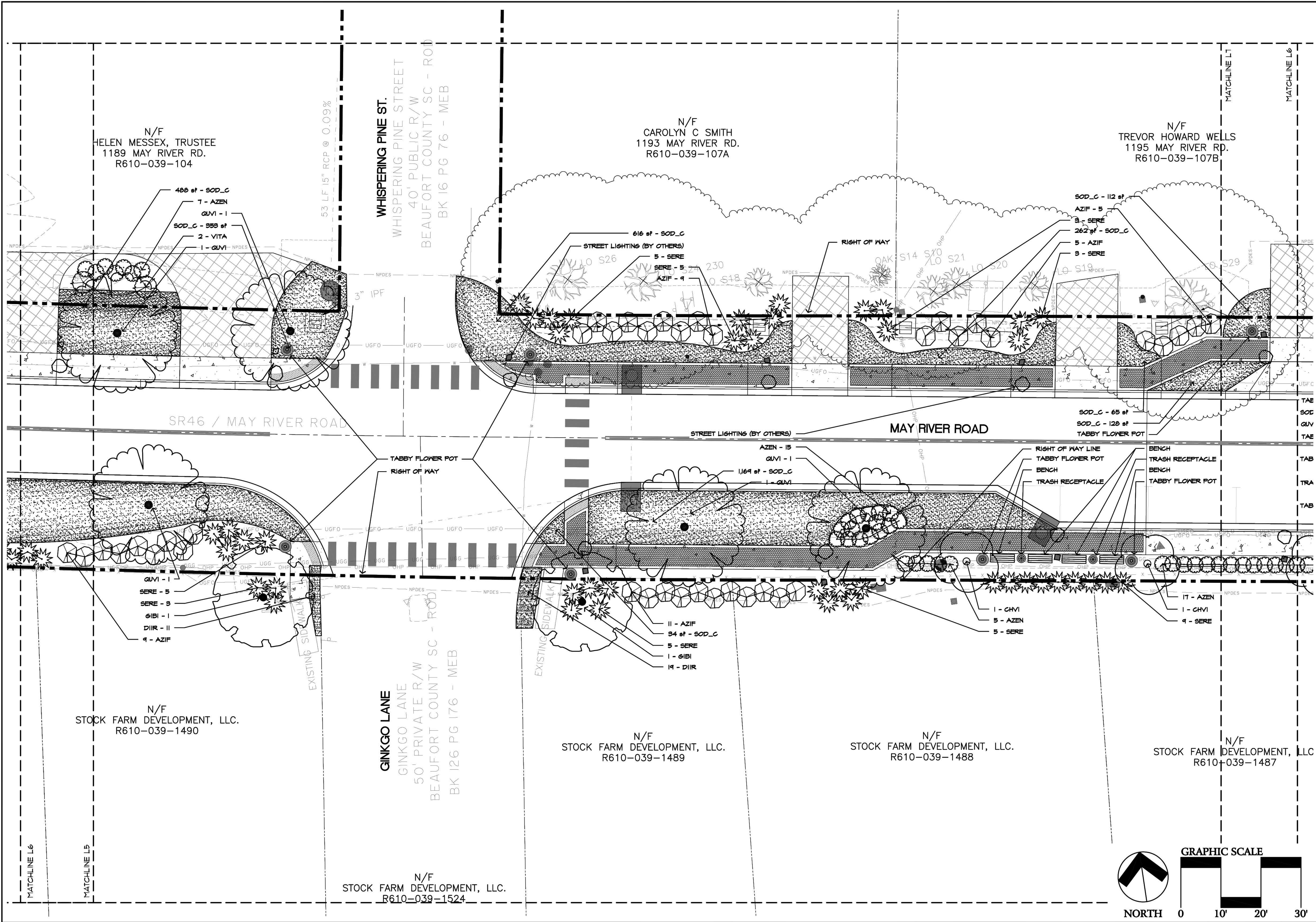
Date:
June 22, 2016

Drawn:
KD, JT

Approved:

Revisions:
June 27, 2016
August 11, 2016
September 28, 2016
November 14, 2016
November 23, 2016
December 12, 2016
March 13, 2017
April 24, 2017
May 26, 2017
July 5, 2017

Sheet
L4
Of 15



Sheet Title:
Planting Plan

Job Number:
201613-01

Date:
June 22, 2016

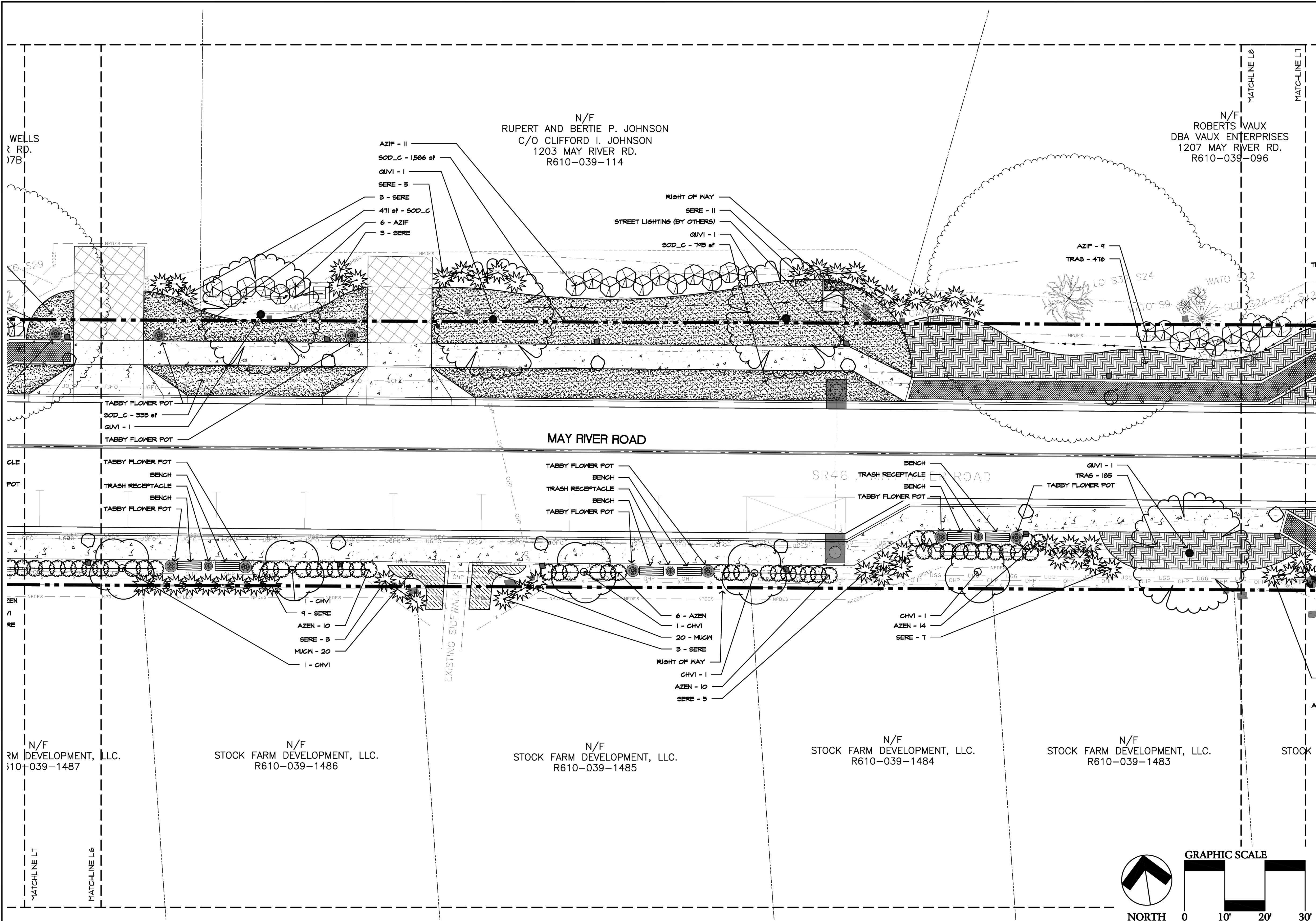
Drawn:
KD, JT

Approved:

Revisions:
June 27, 2016
August 11, 2016
September 28, 2016
November 14, 2016
November 23, 2016
December 12, 2016
March 13, 2017
April 24, 2017
July 5, 2017

Sheet
L6
Of 15

J. K. TILLER ASSOCIATES, INC.
LANDSCAPE ARCHITECTURE
181 BLUFFTON ROAD, SUITE F203
BLUFFTON, SC 29910
Voice 843.815.4802
jtiller@jktiller.com



J. K. TILLER ASSOCIATES, INC.
LANDSCAPE ARCHITECTURE
181 BLUFFTON ROAD, SUITE F203
BLUFFTON, SC 29910
Voice 843.815.4800
jtiller@jktiller.com

May River Road Phase II Streetscape
LANDSCAPE PLANS
Town of Bluffton, South Carolina

Sheet Title:
Planting Plan

Job Number:
201613-01

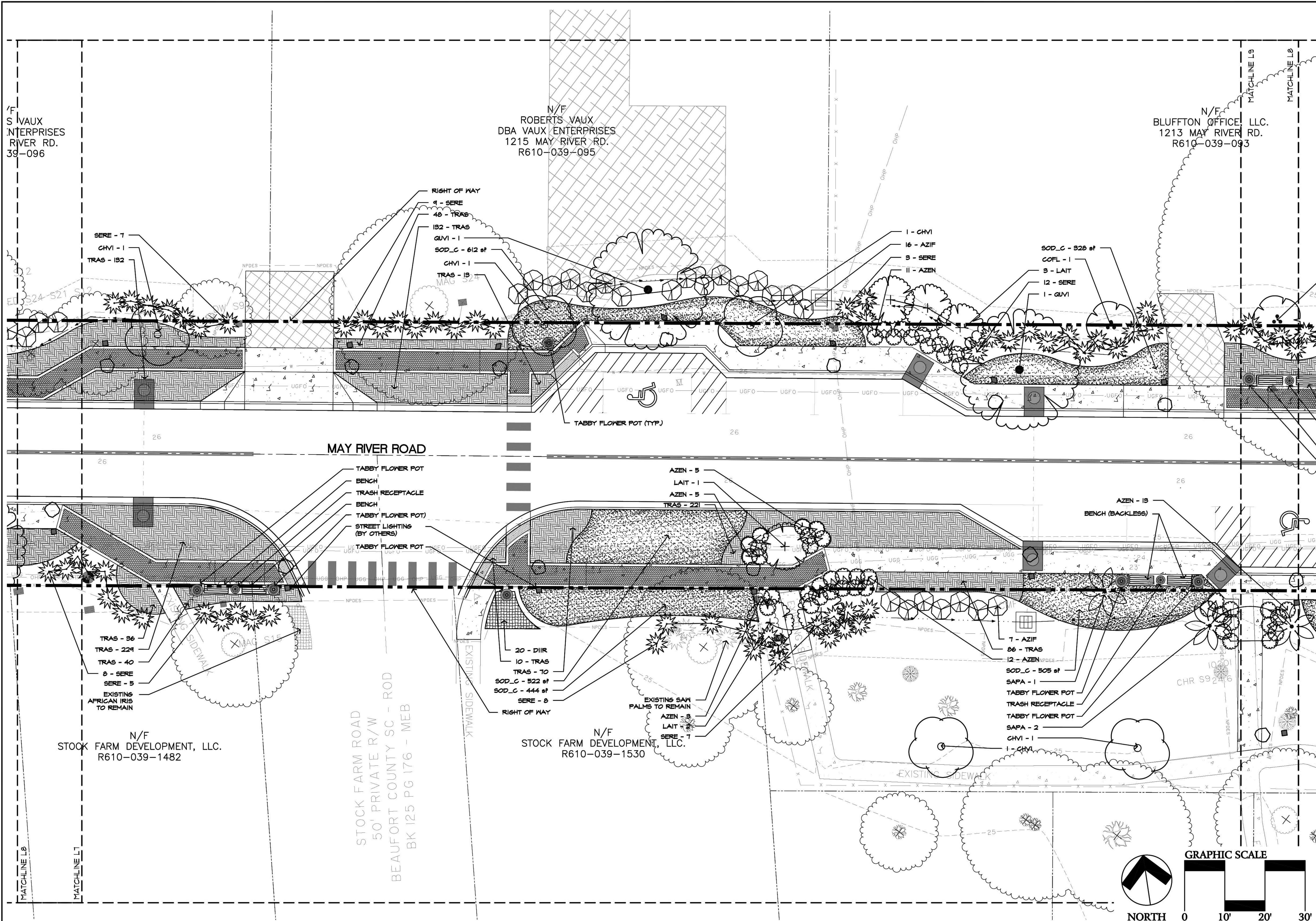
Date:
June 22, 2016

Drawn:
KD, JT

Approved:

Revisions:
June 27, 2016
August 11, 2016
September 28, 2016
November 14, 2016
November 23, 2016
December 12, 2016
March 13, 2017
April 24, 2017
July 5, 2017

Sheet
L7
Of 15



N/F
S VAUX
INTERPRISES
RIVER RD.
39-096

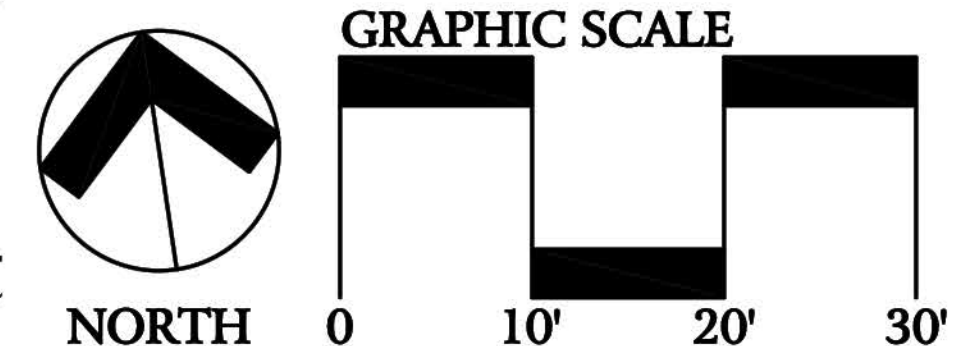
N/F
ROBERTS VAUX
DBA VAUX ENTERPRISES
1215 MAY RIVER RD.
R610-039-095

N/F
BLUFFTON OFFICE, LLC.
1213 MAY RIVER RD.
R610-039-093

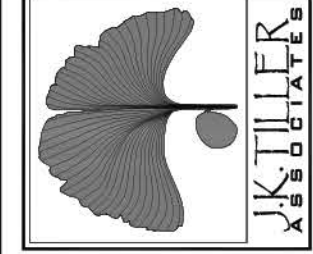
N/F
STOCK FARM DEVELOPMENT, LLC.
R610-039-1482

N/F
STOCK FARM DEVELOPMENT, LLC.
R610-039-1530

STOCK FARM ROAD
50' PRIVATE R/W
BEAUFORT COUNTY SC - ROD
BK 125 PG 176 - MEB



J. K. TILLER ASSOCIATES, INC.
LAND PLANNING
181 BLUFFTON ROAD, SUITE F203
BLUFFTON, SC 29910
Voice 843.815.4800
jtiller@jktiller.com



May River Road Phase II Streetscape
LANDSCAPE PLANS
Town of Bluffton, South Carolina

Sheet Title:
Planting Plan

Job Number:
201613-01

Date:
June 22, 2016

Drawn:
KD, JT

Approved:

Revisions:
June 27, 2016
August 11, 2016
September 28, 2016
November 14, 2016
November 23, 2016
December 12, 2016
March 13, 2017
April 24, 2017
July 5, 2017

Sheet
L8
Of 15

ICE, LLC.
VER RD.
-093

4H CAP

SOD_C - 237 sf

SERE - 14

1 - COFL

7 - SERE

AZEN - 22

COFL - 1

TABBY FLOWER POT

BENCH

374 - TRAS

TABBY FLOWER POT

BENCH

TRASH RECEPTACLE

BENCH

TABBY FLOWER POT

1 - GUVI

SOD_C - 1,199 sf

273 sf - SOD_C

AZEN - 22

SAPA - 1

SERE - 15

TABBY FLOWER POT

BENCH (BACKLESS)

TABBY FLOWER POT

BENCH (BACKLESS)

1,795 sf - SOD_C

1 - SAPA

1 - SAPA

TABBY FLOWER POT

TRASH RECEPTACLE

N/F
STOCK FARM DEVELOPMENT, LLC.
R610-039-1539

1 - CHVI

CHVI - 1

CHVI - 1

N/F
STOCK FARM DEVELOPMENT, LLC.
R610-039-1525

MAY RIVER ROAD

RIGHT OF WAY

SOD_C - 953 sf

SAPA - 1

31 - IL6L

SERE - 5

TABBY FLOWER POT

RIGHT OF WAY LINE

TABBY FLOWER POT

1 - GUVI

2 - CHVI

14 - IL6L

2 - VITA

GUVI - 1

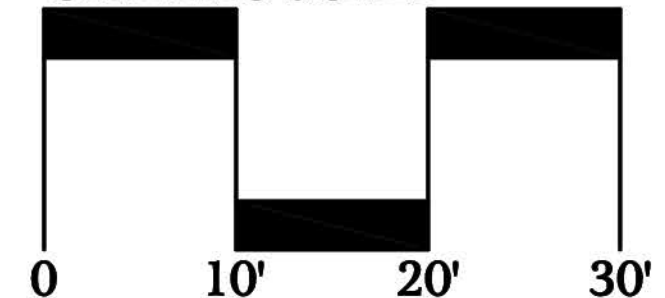
1 - LAIT

MATCHLINE L10

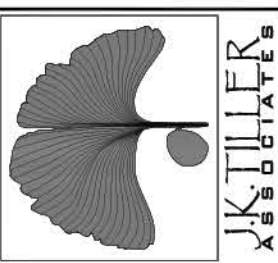
MATCHLINE L9



GRAPHIC SCALE



J. K. TILLER ASSOCIATES, INC.
LAND PLANNING
181 BLUFFTON ROAD, SUITE F203
BLUFFTON, SC 29910
Voice 843.815.4800
jtiller@ktiller.com



May River Road Phase II Streetscape
LANDSCAPE PLANS
Town of Bluffton, South Carolina

Sheet Title:
Planting Plan

Job Number:
201613-01

Date:
June 22, 2016

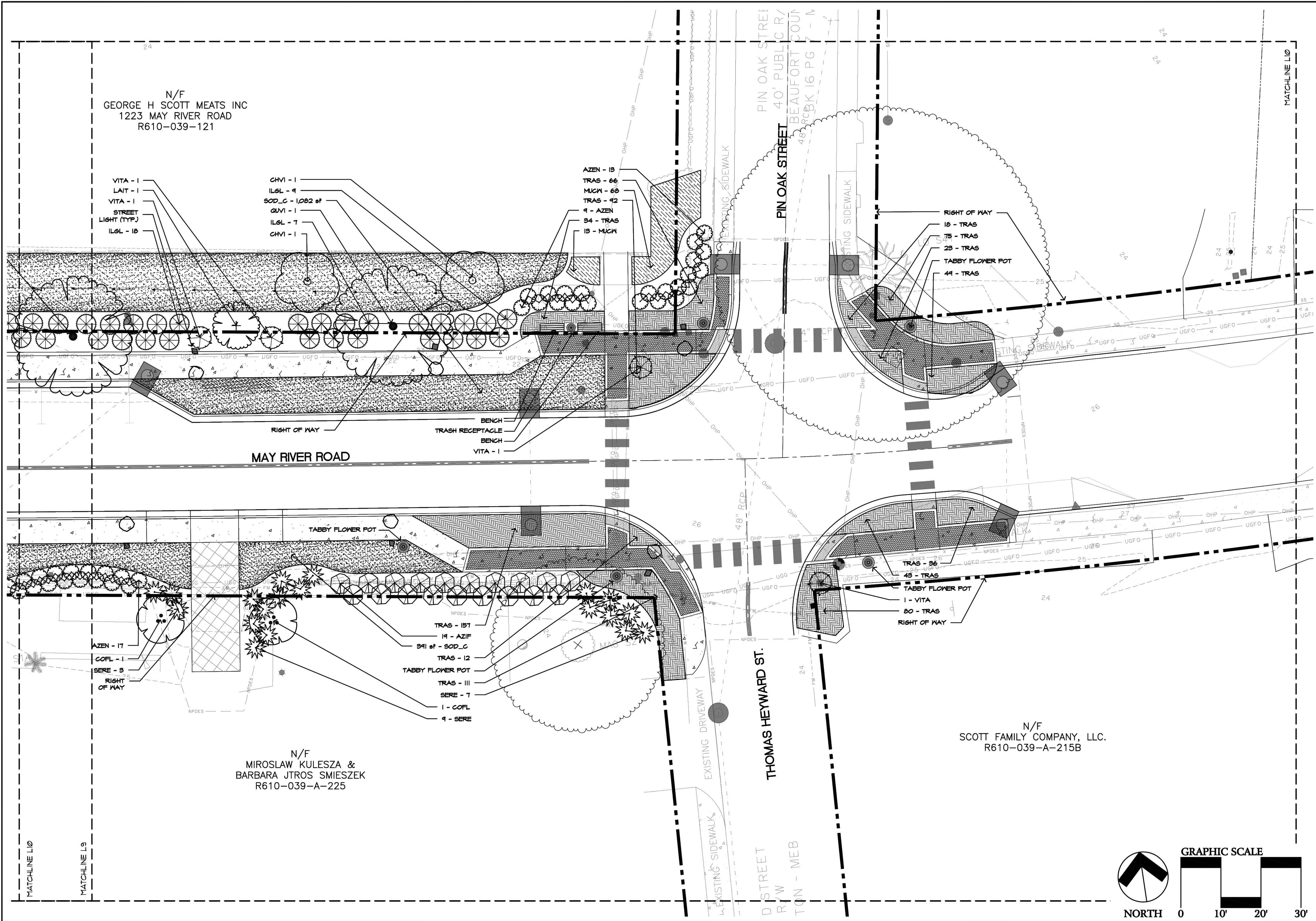
Drawn:
KD, JT

Approved:

Revisions:
June 27, 2016
August 11, 2016
September 28, 2016
November 14, 2016
November 23, 2016
December 12, 2016
March 13, 2017
April 24, 2017
July 5, 2017

Sheet

L9
Of 15



Sheet Title:
Planting Plan

Job Number:
201613-01

Date:
June 22, 2016

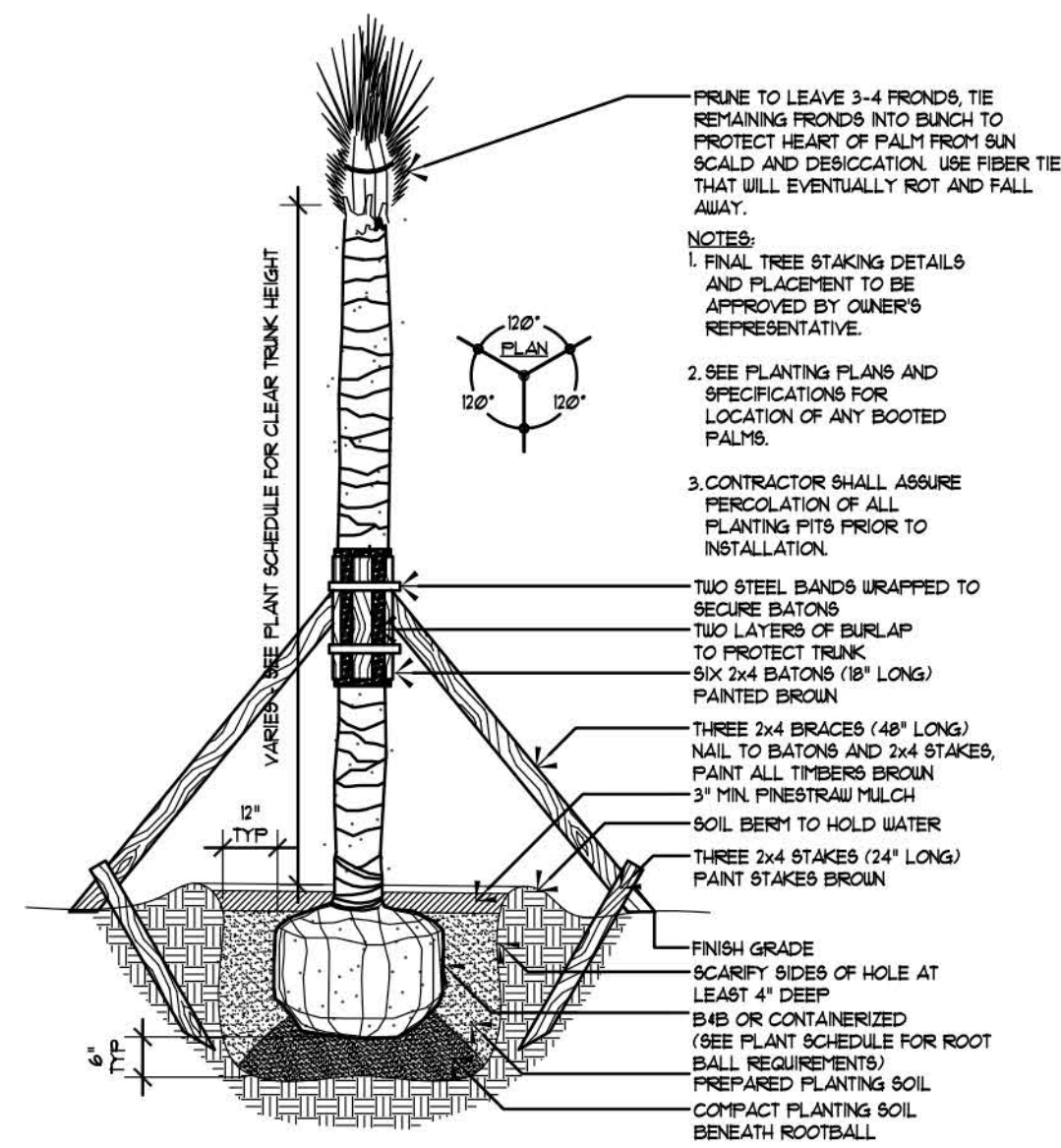
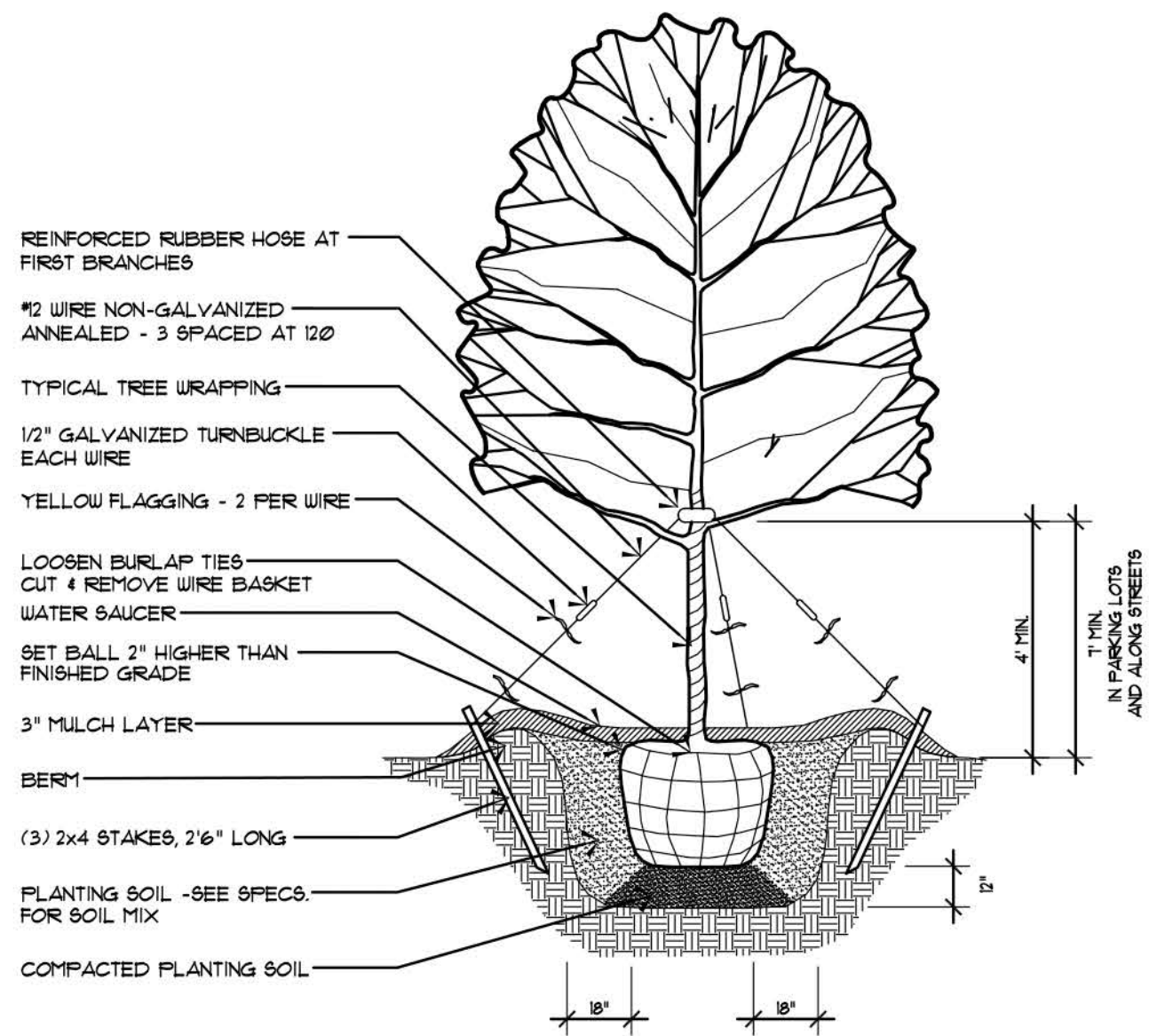
Drawn:
KD, JT

Approved:

Revisions:
June 27, 2016
August 11, 2016
September 28, 2016
November 14, 2016
November 23, 2016
December 12, 2016
March 13, 2017
July 5, 2017

Sheet
L10
Of 15

J. K. TILLER ASSOCIATES, INC.
LANDSCAPE ARCHITECTURE
181 BLUFFTON ROAD, SUITE F203
BLUFFTON, SC 29910
Voice 843.815.4800
jtiller@ktiller.com

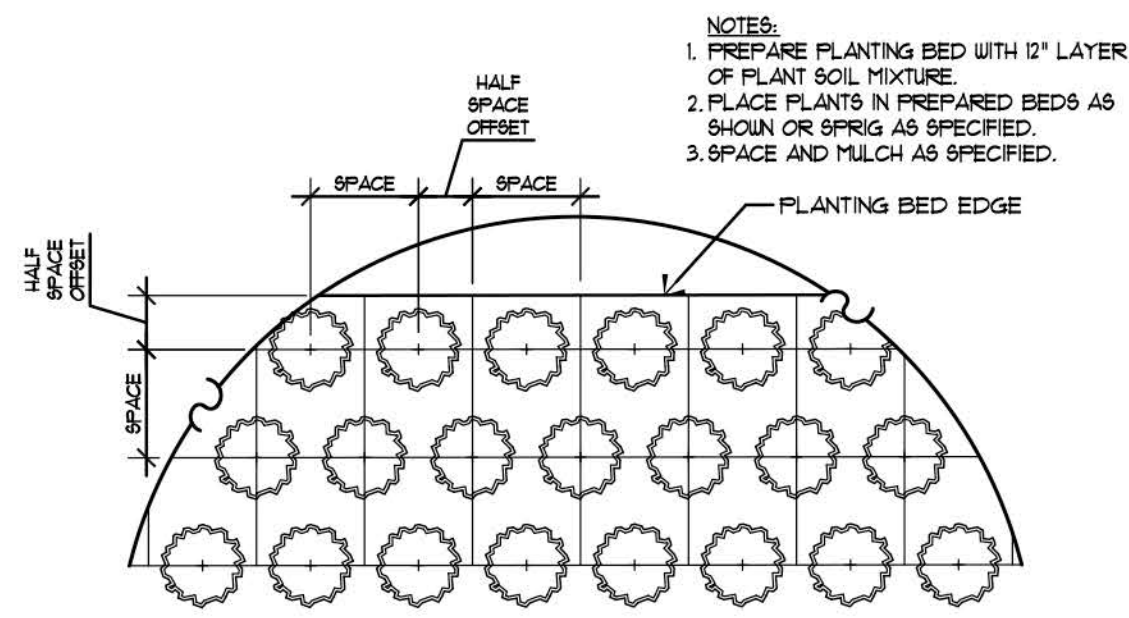
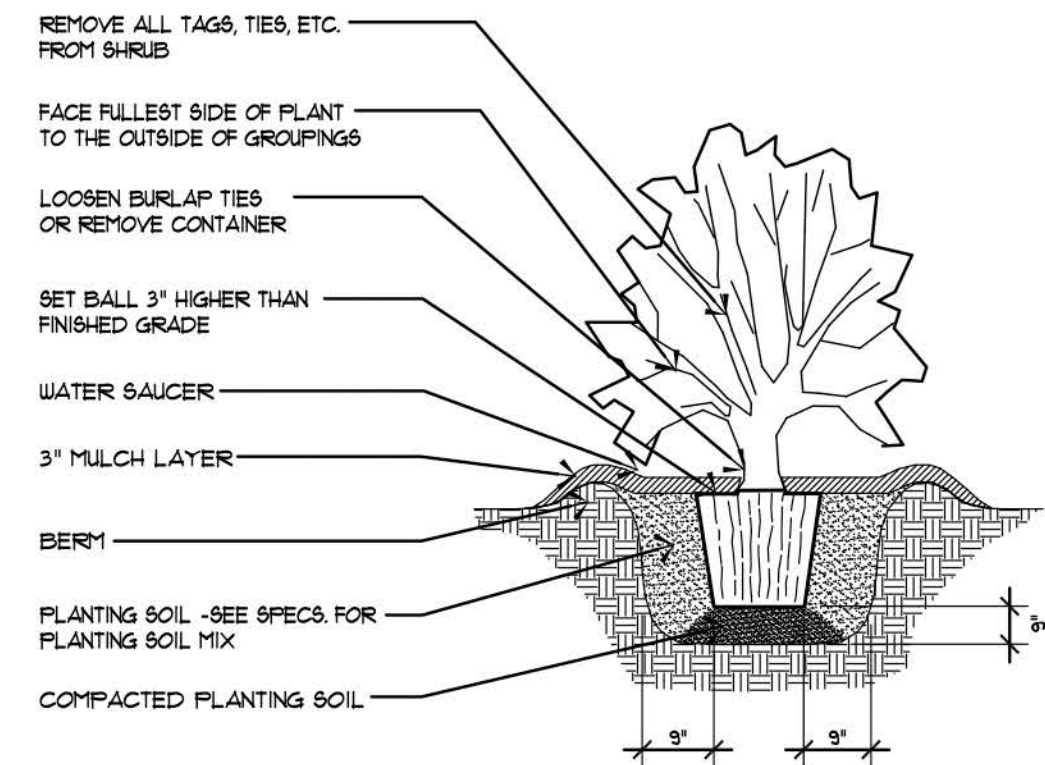


1 Tree Planting

PS Not to Scale

2 Palmetto Tree Planting

PS Not to Scale

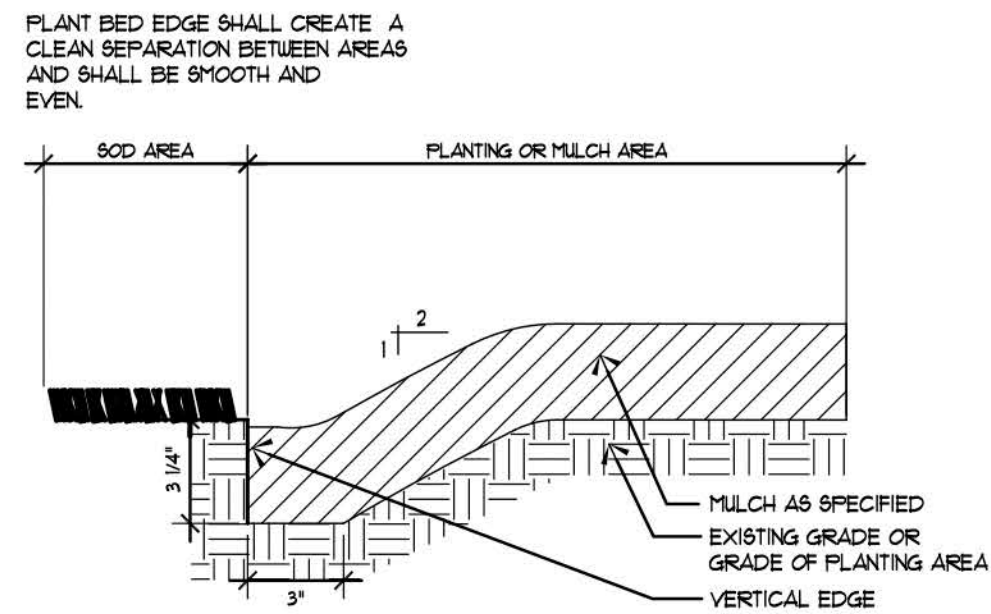


3 Shrub Planting

PS Not to Scale

4 Ground Covers, Annuals & Perennials

PS Not to Scale



5 Sod / Plant Bed Edge Detail

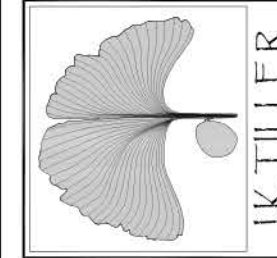
PS Not to Scale

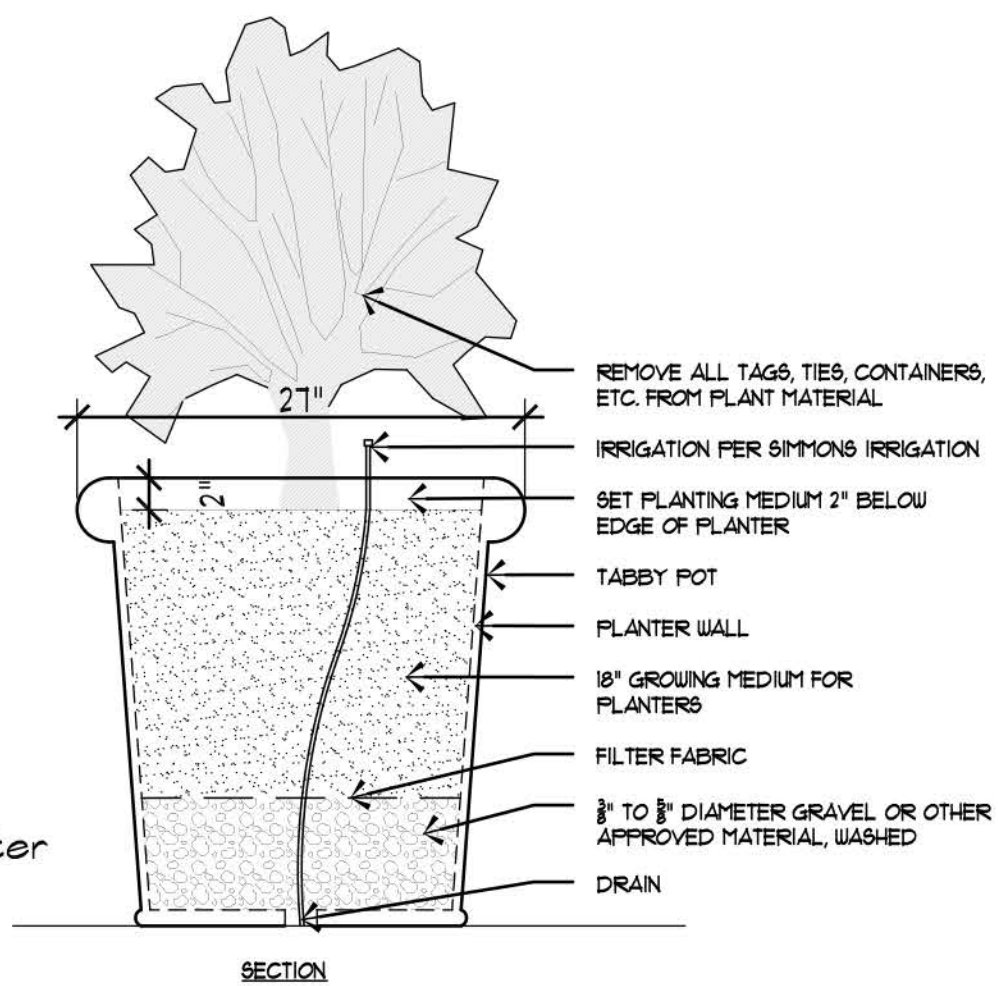
PLANT SCHEDULE

TREES	QTY	BOTANICAL NAME / COMMON NAME	CAL.	HEIGHT	SPREAD	CONT.
CECA	2	Cercis canadensis / Eastern Redbud	2"	8'-10'	4'-6'	456
CHVI	24	Chionanthus virginicus / White Fringetree Single Trunk	1.5"-1.75"	4'-6'	3'-4'	306
COFL	5	Cornus florida / Eastern Dogwood	1.5"-1.75"	6'-8'	3'-4'	306
GIBI	2	Ginkgo biloba 'Autumn Gold' TM / Maidenhair Tree	2.5" min.	10' min.	4'-6'	Cont.
LAIT	9	Lagerstroemia indica 'Tuscarora' / Grape Myrtle Multi-Trunk	1.75"-2"	10'-12'	4'-6'	306
QUVI	37	Quercus virginiana / Southern Live Oak	2.5"-3"	12'-14'	6'-8'	656
SAPA	7	Sabal palmetto / Cabbage Palmetto Hurricane Cut	-	15'-16'		B&B
SHRUBS	QTY	BOTANICAL NAME / COMMON NAME	CONT.	HEIGHT	SPREAD	
AZEN	237	Azalea Encore TM / Encore Azalea	3 Gal.	15"-18"	15"-18"	
AZIF	345	Azalea indica 'Formosa' / Formosa Azalea	7 Gal.	24"-30"	24"-30"	
ILGL	132	Ilex glabra / Inkberry Holly	7 Gal.	24"-30"	24"-30"	
SERE	369	Serenoa repens / Saw Palmetto	7 Gal.	18"-24"	18"-24"	
VITA	12	Vitex agnus-castus / Chaste Tree	15 Gal.	4'-6'	3'-4'	
VINE/ESPALIER	QTY	BOTANICAL NAME / COMMON NAME	CONT.	HEIGHT	SPREAD	
GELS	94	Gelsemium sempervirens 'Carolina' / Yellow Jessamine Staked	3 Gal.	2' min.		
GROUND COVERS	QTY	BOTANICAL NAME / COMMON NAME	CONT.	HEIGHT	SPREAD	SPACING
DIIR	50	Dietes iridifolios / African Iris	3 Gal.	24" min.	8"-12"	24" o.c.
MUCN	121	Muhlenbergia capillaris 'White Cloud' / White Muhly Grass	3 Gal.	15"-18"	12"-18"	24" o.c.
TRAS	2,848	Trachelospermum asiaticum 'Asiatic' / Asiatic Jasmine	1 Gal.		6"-8"	18" o.c.
SOD/SEED	QTY	BOTANICAL NAME / COMMON NAME	CONT.	HEIGHT	SPREAD	SPACING
SOD_C	40,342 sf	Cynodon dactylon 'Celebration' / Celebration Bermuda Grass	SOD			
GROUND OTHER MATERIALS						
MULCH	50,500 sf	3" Deep Longleaf Pinestraw Mulch				

PLANTING NOTES:

- MATERIALS LIST WAS PREPARED FOR ESTIMATING PURPOSES, CONTRACTOR SHALL MAKE OWN QUANTITY TAKE-OFF USING DRAWINGS AND SPECIFICATIONS TO DETERMINE QUANTITIES TO HIS SATISFACTION, REPORTING PROMPTLY ANY DISCREPANCIES WHICH MAY EFFECT BIDDING.
- ROOT TYPES MAY BE FREELY SUBSTITUTED IN CASE OF BALLED AND BURLAPPED OR CONTAINER GROWN, ALL OTHER SPECIFICATIONS TO REMAIN UNCHANGED.
- CONTRACTOR TO VERIFY THAT ALL PLANT MATERIAL IS AVAILABLE AS SPECIFIED WHEN PROPOSAL IS SUBMITTED.
- SEE TREE, SHRUB, AND GROUND COVER PLANTING DETAILS AND SPECIAL PROVISIONS FOR PLANTING SPECIFICATIONS.
- CONTRACTOR SHALL TEST SOIL PH AND CONDITIONS FOR ALL SOD AREAS TO INSURE THAT PROPER SOIL REQUIREMENTS ARE MET FOR THE SODDED LAWN. SOIL SHALL BE AMENDED BY CONTRACTOR AS INDICATED BY SOIL TEST AND SPECIFICATIONS TO ACHIEVE PROPER SOIL CONDITIONS.
- CONTRACTOR SHALL STAKE OUT ALL SHRUB BED LINES, TREE LOCATIONS, AND SHRUB GROUPINGS FOR APPROVAL BY LANDSCAPE ARCHITECT BEFORE BEGINNING PLANTING OPERATIONS. IF PLANTING OCCURS WITHOUT APPROVAL, RELOCATION OF PLANTINGS REQUESTED BY THE LANDSCAPE ARCHITECT SHALL BE DONE AT THE CONTRACTOR'S EXPENSE.
- ALL SHRUB BEDS TO RECEIVE 3" DEEP LONGLEAF PINESTRAW MULCH.
- CONTRACTOR TO MAINTAIN THE PLANTINGS AND CONTROL WEEDS IN MULCH AREAS THROUGH THE DURATION OF CONSTRUCTION UNTIL FINAL ACCEPTANCE.
- ALL PLANT BED AND SOD AREAS TO RECEIVE 100% IRRIGATION COVERAGE EXCEPT WHERE NOTED ON THE PLAN.
- IN THE PLANT SCHEDULE, PLANTS NOTED AS "SPECIMEN", SHALL BE SELECTED BY THE LANDSCAPE ARCHITECT AT THE NURSERY OR PHOTOS OF THE PLANTING STOCK SHALL BE SUBMITTED TO THE LANDSCAPE ARCHITECT FOR APPROVAL.
- HERBICIDE SHALL BE APPLIED TO PLANTING AREAS PRIOR TO LANDSCAPE INSTALLATION.
- PLANT BED SHALL BE TESTED FOR PH AND AMENDED PRIOR TO INSTALLATION.
- PLANT SIZES AND SPECIES MAY VARY DUE TO AVAILABILITY. CHANGES TO PLANT SIZES AND SPECIES MUST BE APPROVED BY THE LANDSCAPE ARCHITECT. SUBSTITUTED PLANT SPECIES SHALL HAVE SIMILAR CHARACTER AS ORIGINAL PLANT.
- THE PLANT BED AREAS LABELED AS "AN" SHALL BE PLANTED WITH ANNUALS AND PERENNIALS SELECTED BY THE LANDSCAPE ARCHITECT. SELECTIONS AND FINAL PLACEMENT OF ALL ANNUAL AND PERENNIAL BEDS SHALL BE APPROVED BY THE LANDSCAPE ARCHITECT.





Tabby Flower Pot
Manufacturer/ Model: Gisco Rolled Rim Planter
Finish/Color: Buff Tabby
Size: 28"H/ 27"D/375 lb.
Notes:
1. Add Irrigation per Simmons Irrigation Plans
2. Flower selection per Landscape Architect, based on season plant availability
3. Planter to be placed level on ground
4. To Order, Contact Gisco at 912-554-800;
giscoinc@comcast.net; 130 Bailey Rd. Brunswick, GA 31525



See SCE#6 Lighting Plans and specifications

SITE FURNISHING SCHEDULE

ITEM	QTY.	MANUFACTURER	MODEL #	COLOR	OPTIONS
Living Fence	564 LF	See Detail			
Chain Link Gates	4	Tymetal Corp. or equal	Heavy Duty Cantilever Slide Gate	Black Vinyl Coated	No Barbed Wire
Tabby Flower Pot	51	Gisco	Rolled Rim Planter	Buff Tabby (28"H/ 27"D/375 lb.)	Add Irrigation per Simmons Irrigation Plans
Bench	20	Du Mor	165 Series PL - 3 Arm	Black Powdercoat Finish/ Cedar Recycled Plastic	6' Bench with Center Arm, Option, S-4 Support Anchor with Steel Bar
Backless Bench	4	Du Mor	166 Series PL	Black Powdercoat Finish/ Cedar Recycled Plastic	6' Bench with Center Arm, Option, S-4 Support, Anchor with Steel Bar
Trash Receptacle	12	Du Mor	70-22PL	Black Powdercoat Finish/ Cedar Recycled Plastic	Add Dome Hood, Anchor w/ the stainless expansion anchor
Street Light Standard*		Match Phase I	Match Phase I		
* See SCE#6 Lighting Plans and specifications					

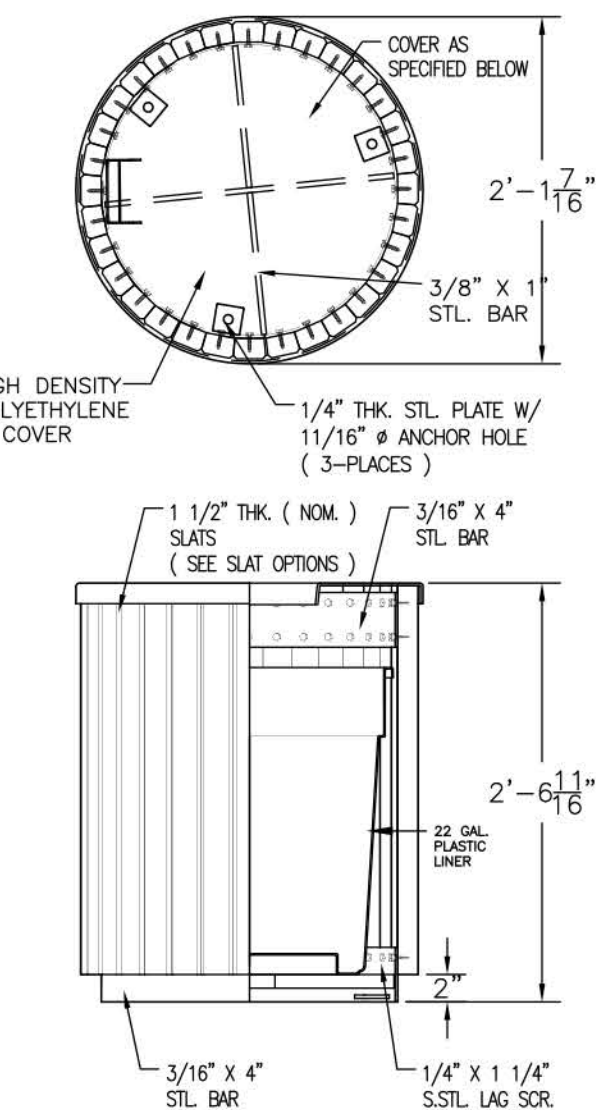
SITE FURNISHING NOTES:

- MATERIALS LIST WAS PREPARED FOR ESTIMATING PURPOSES, CONTRACTOR SHALL MAKE OWN QUANTITY TAKE-OFF USING DRAWINGS AND SPECIFICATIONS TO DETERMINE QUANTITIES TO HIS SATISFACTION, REPORTING PROMPTLY ANY DISCREPANCIES WHICH MAY EFFECT BIDDING.
- ROOT TYPES MAY BE FREELY SUBSTITUTED IN CASE OF BALLED AND BURLAPPED OR CONTAINER GROWN, ALL OTHER SPECIFICATIONS TO REMAIN UNCHANGED.
- CONTRACTOR TO VERIFY THAT ALL PLANT MATERIAL IS AVAILABLE AS SPECIFIED WHEN PROPOSAL IS SUBMITTED.
- SEE TREE, SHRUB, AND GROUND COVER PLANTING DETAILS AND SPECIAL PROVISIONS FOR PLANTING SPECIFICATIONS.
- CONTRACTOR SHALL TEST SOIL PH AND CONDITIONS FOR ALL SOD AREAS TO INSURE THAT PROPER SOIL REQUIREMENTS ARE MET FOR THE SODDED LAWN. SOIL SHALL BE AMENDED BY CONTRACTOR AS INDICATED BY SOIL TEST AND SPECIFICATIONS TO ACHIEVE PROPER SOIL CONDITIONS.
- CONTRACTOR SHALL STAKE OUT ALL SHRUB BED LINES, TREE LOCATIONS, AND SHRUB GROUPINGS FOR APPROVAL BY LANDSCAPE ARCHITECT BEFORE BEGINNING PLANTING OPERATIONS. IF PLANTING OCCURS WITHOUT APPROVAL, RELOCATION OF PLANTINGS REQUESTED BY THE LANDSCAPE ARCHITECT SHALL BE DONE AT THE CONTRACTOR'S EXPENSE.
- ALL SHRUB BEDS TO RECEIVE 3" DEEP LONGLEAF PINESTRAW MULCH.
- CONTRACTOR TO MAINTAIN THE PLANTINGS AND CONTROL WEEDS IN MULCH AREAS THROUGH THE DURATION OF CONSTRUCTION UNTIL FINAL ACCEPTANCE.
- ALL PLANT BED AND SOD AREAS TO RECEIVE 100% IRRIGATION COVERAGE EXCEPT WHERE NOTED ON THE PLAN.
- IN THE PLANT SCHEDULE, PLANTS NOTED AS "SPECIMEN", SHALL BE SELECTED BY THE LANDSCAPE ARCHITECT AT THE NURSERY OR PHOTOS OF THE PLANTING STOCK SHALL BE SUBMITTED TO THE LANDSCAPE ARCHITECT FOR APPROVAL.
- HERBICIDE SHALL BE APPLIED TO PLANTING AREAS PRIOR TO LANDSCAPE INSTALLATION.
- PLANT BED SHALL BE TESTED FOR PH AND AMENDED PRIOR TO INSTALLATION.
- PLANT SIZES AND SPECIES MAY VARY DUE TO AVAILABILITY. CHANGES TO PLANT SIZES AND SPECIES MUST BE APPROVED BY THE LANDSCAPE ARCHITECT. SUBSTITUTED PLANT SPECIES SHALL HAVE SIMILAR CHARACTER AS ORIGINAL PLANT.
- THE PLANT BED AREAS LABELED AS "AN" SHALL BE PLANTED WITH ANNUALS AND PERENNIALS SELECTED BY THE LANDSCAPE ARCHITECT. SELECTIONS AND FINAL PLACEMENT OF ALL ANNUAL AND PERENNIAL BEDS SHALL BE APPROVED BY THE LANDSCAPE ARCHITECT.

1 Tabby Flower Pot
D1 Scale: 1"=1'-0"



Trash Receptacle
Manufacturer/ Model: DuMor 70-22PL
Finish: Black Powdercoat & Cedar Recycled Plastic
Size: 142 lb.
Support Option: Embedded S-1
Cover: DM- Dome Top



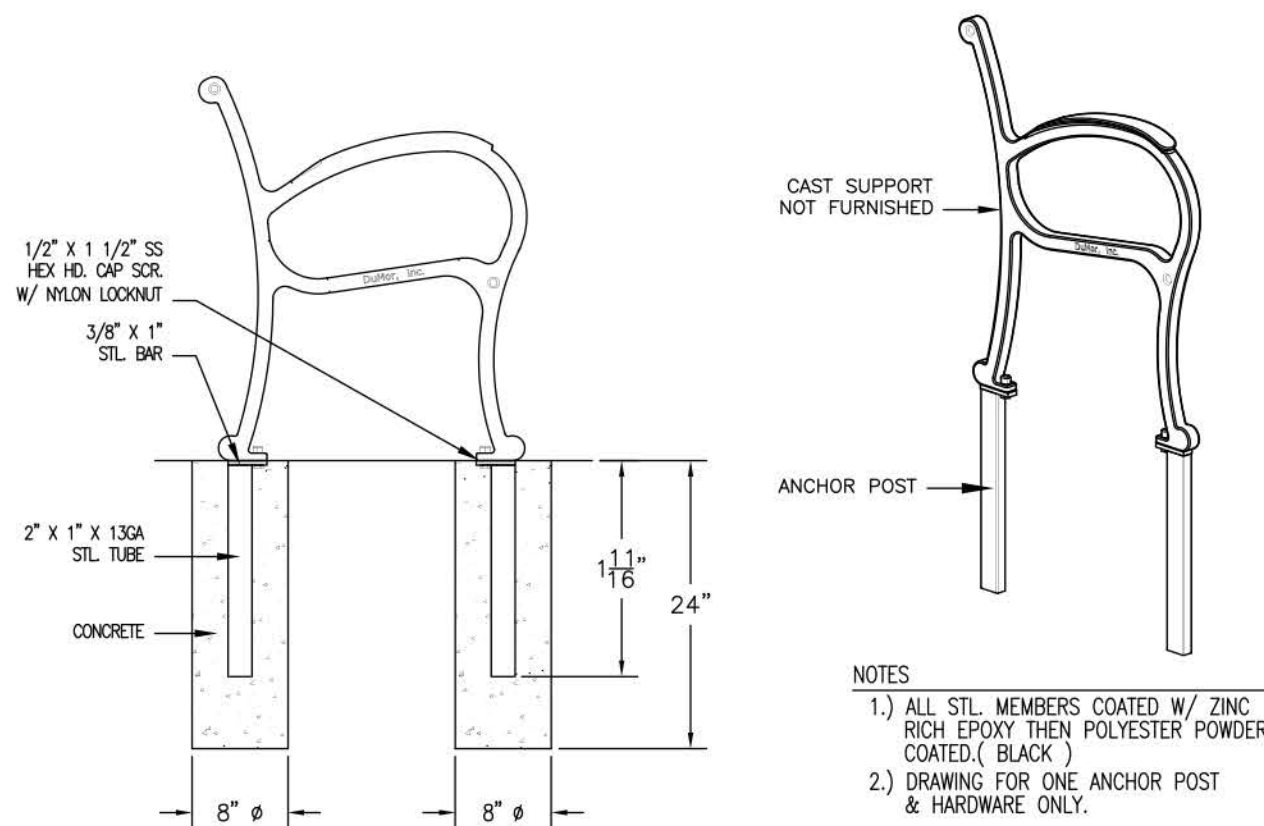
- NOTES
- ALL STL. MEMBERS COATED W/ ZINC RICH EPOXY THEN FINISHED W/ BLACK POLYESTER POWDER COATING.
 - 1/2" X 3 3/4" EXPANSION ANCHOR BOLTS PROVIDED.
 - RECEPTACLE FULLY ASSEMBLED AT FACTORY.

RECEPTACLE SELECTIONS

- ☒ POWDERCOAT COLOR "BLACK"
- ☒ "CEDAR" RECYCLED PLASTIC
- ☒ COVER "DM - DOME TOP"
- ☒ CWR-30-PT (25 3/8" DIA. STEEL PUSH TOP COVER)

DuMor, inc.	RECEPTACLE	DATE DRAWN: 10/23/2006 DRAWN BY: JCC DATE REV.: 10/26/11 REV. BY: JCC	REV. E	DRAWING NUMBER 70-22PL/46-00	SHEET 1 OF 2
-------------	------------	--	--------	------------------------------	--------------

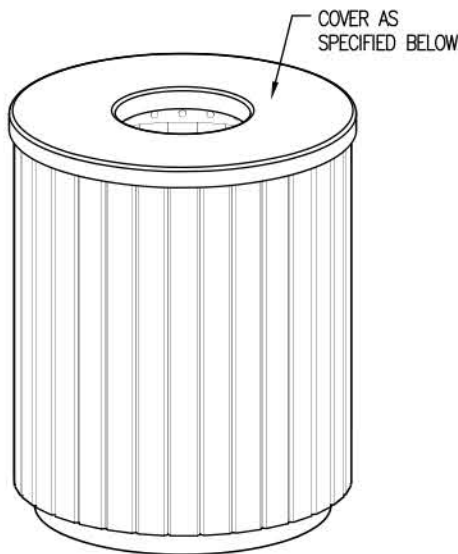
3 DuMor Receptacle 70-22 (Match Phase II)
D1 Scale: 1/2"=1'-0", Notes: Add Dome Lid



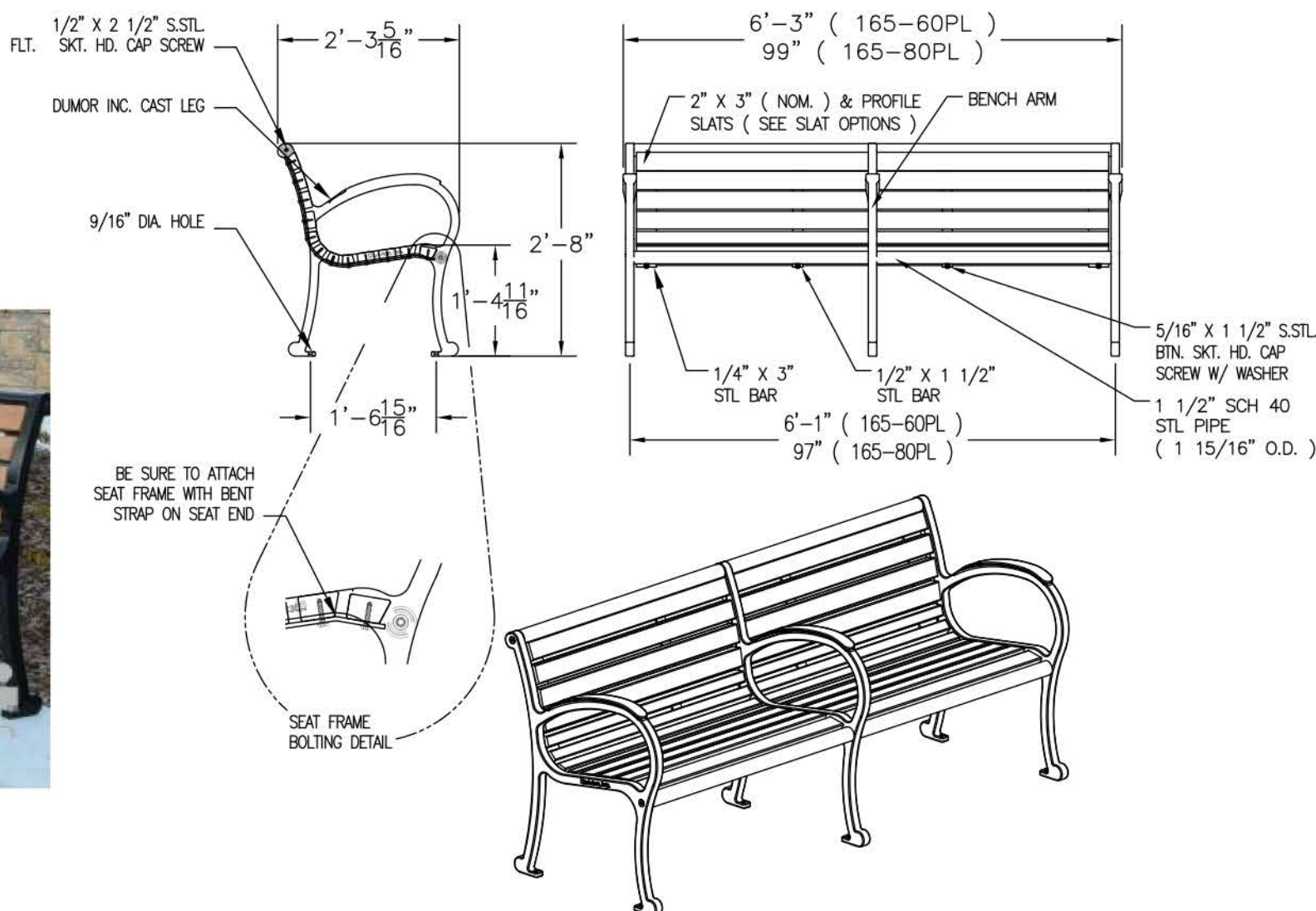
- NOTES
- ALL STL. MEMBERS COATED W/ ZINC RICH EPOXY THEN FINISHED W/ POLYESTER POWDER COATING (BLACK)
 - DRAWING FOR ONE ANCHOR POST & HARDWARE ONLY.

DuMor, inc.	ANCHOR POST	DATE DRAWN: 1/19/04 DRAWN BY: JCC DATE REV.: 1/29/04 REV. BY: JCC	REV. C	TITLE ANCHOR POST	REVISION C	DRAWING NUMBER G3-471/160 SERIES	SHEET 1 OF 2
-------------	-------------	--	--------	-------------------	------------	----------------------------------	--------------

2 Street Light Standard (Match Phase II)
D2 Not to Scale



3 Arm Bench
Manufacturer/ Model: DuMor 165-60R-3AR
Finish: Black Powdercoat & Cedar Recycled Plastic
Support Option: All Steel Anchoring Post Extension
See Detail 3/D1



- NOTES
- ALL STL. MEMBERS COATED W/ ZINC RICH EPOXY THEN FINISHED W/ POLYESTER POWDER COATING.
 - 1/2" X 3 3/4" EXPANSION ANCHOR BOLTS PROVIDED.

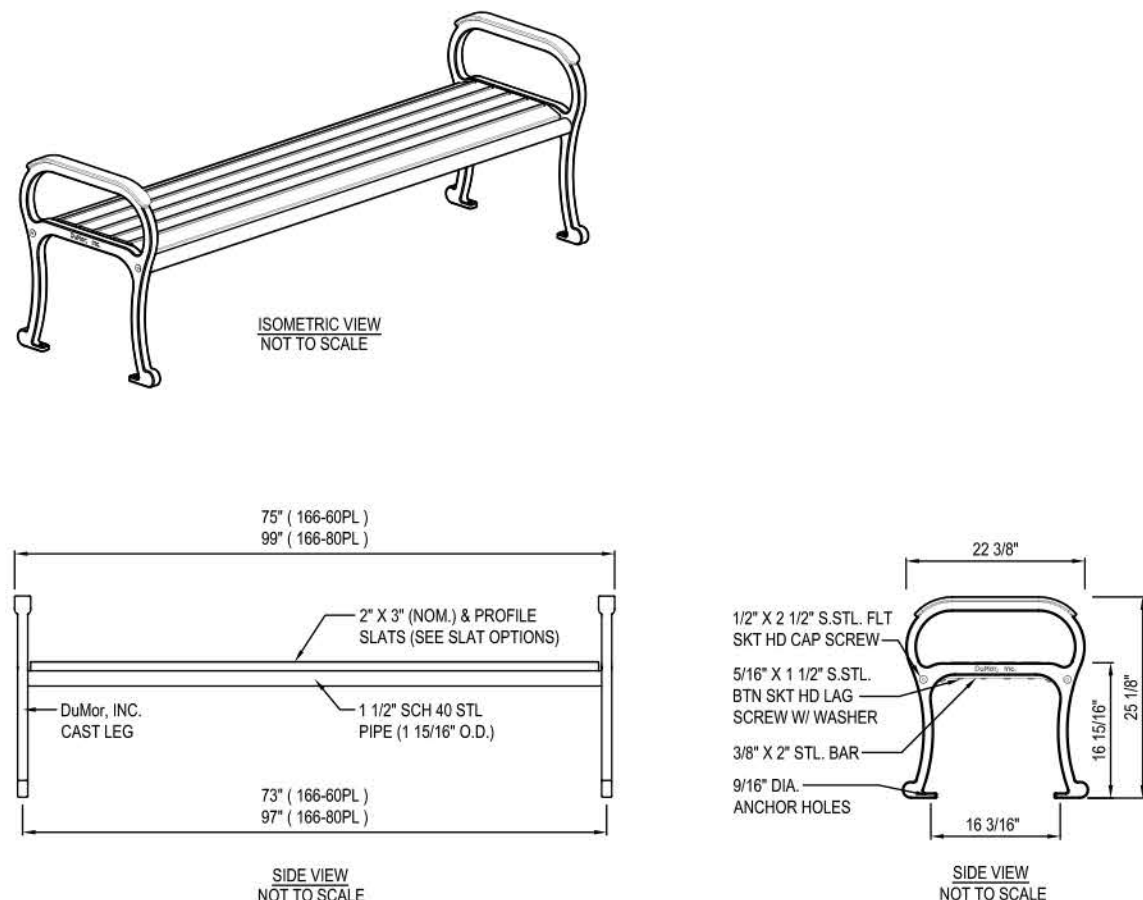
BENCH SELECTIONS

- ☒ POWDERCOAT COLOR "BLACK"
- ☒ "CEDAR" RECYCLED PLASTIC
- ☒ 6" BENCH
- ☒ 3 ARMS

DuMor, inc.	BENCH	DATE DRAWN: 06/28/2006 DRAWN BY: JCC DATE REV.: 10/26/11 REV. BY: JCC	REV. D	DRAWING NUMBER 165 SERIES-PL	SHEET 1 OF 2
-------------	-------	--	--------	------------------------------	--------------



Backless Bench
Manufacturer/ Model: DuMor 166-60R
Finish: Black Powdercoat & Cedar Recycled Plastic
Support Option: All Steel Anchoring Post Extension
See Detail 3/D1



- NOTES:
- INSTALLATION TO BE COMPLETED IN ACCORDANCE WITH MANUFACTURER'S SPECIFICATIONS.
 - DO NOT SCALE DRAWINGS.
 - ALL STL. MEMBERS COATED W/ ZINC RICH EPOXY THEN FINISHED W/ POLYESTER POWDER COATING.
 - 1/2" X 3 3/4" EXPANSION ANCHOR BOLTS PROVIDED.

BENCH SELECTIONS

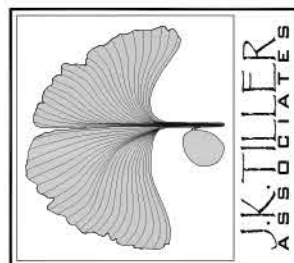
- ☒ POWDERCOAT COLOR "BLACK"
- ☒ "CEDAR" RECYCLED PLASTIC
- ☒ 6" BENCH
- ☒ ALL STEEL ANCHORING POST EXTENSION

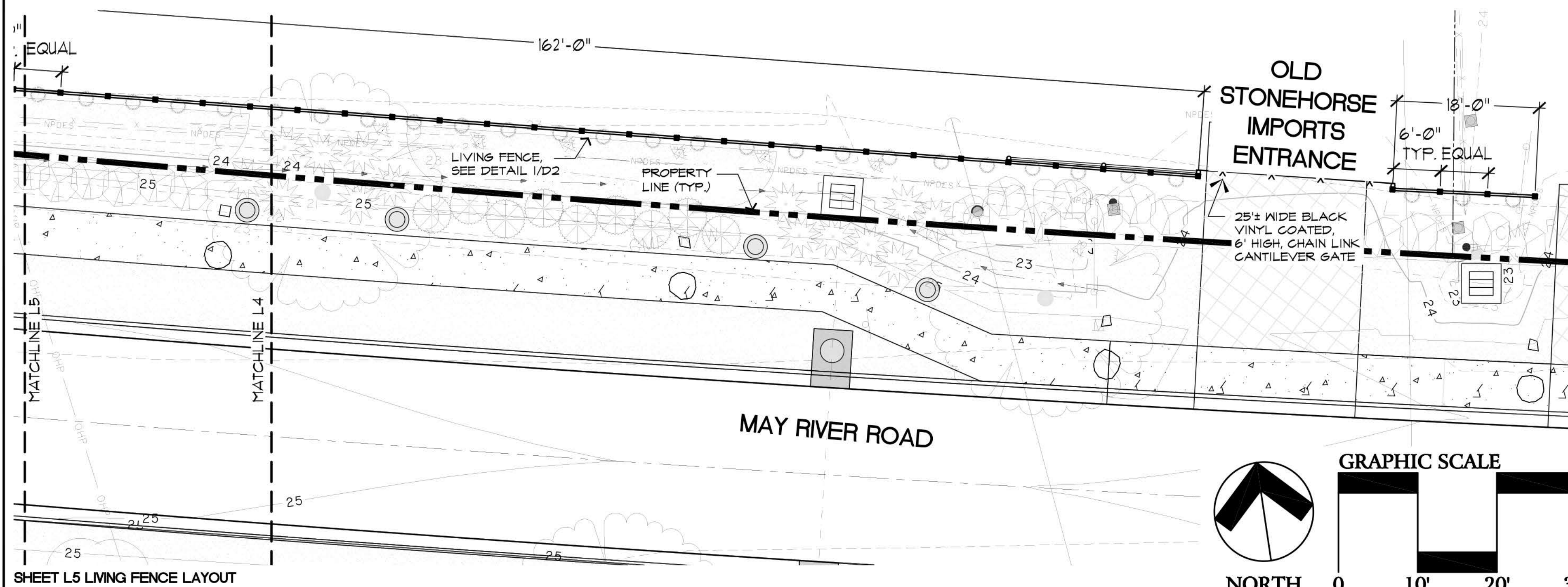
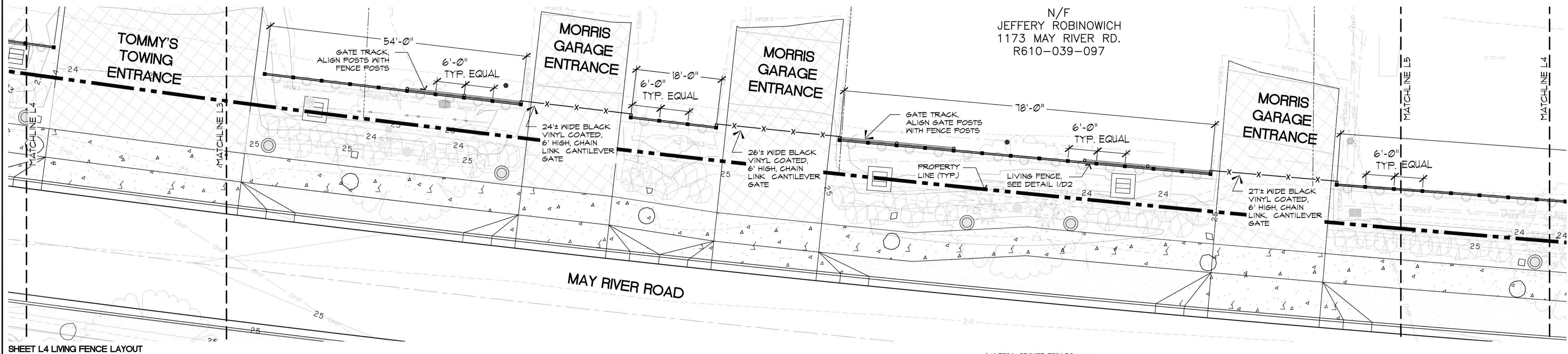
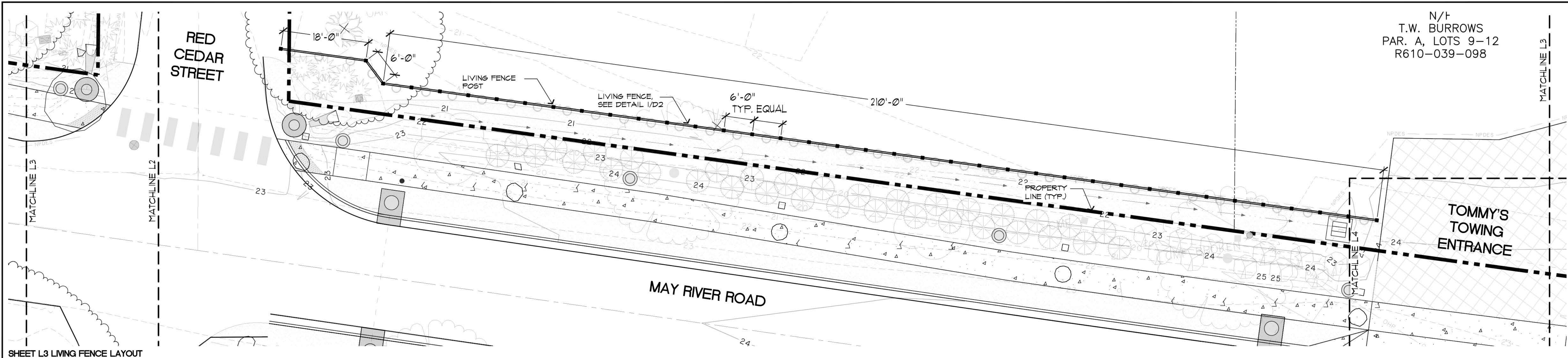
DuMor, inc.	BENCH	DATE DRAWN: 06/28/2006 DRAWN BY: JCC DATE REV.: 10/26/11 REV. BY: JCC	REV. D	DRAWING NUMBER 166 SERIES-PL	SHEET 1 OF 2
-------------	-------	--	--------	------------------------------	--------------

3 DuMor Bench All Steel Anchor Post
D1 Scale: 3/4"=1'-0", Notes: Anchor Post for All Benches

4 DuMor Bench 165 (Match Phase II)
D1 Scale: 1/2"=1'-0", Notes: Use Anchor Post for All Benches

5 DuMor Bench 166 (Match Phase II)
D1 Scale: 1/2"=1'-0", Notes: Use Anchor Post for All Benches

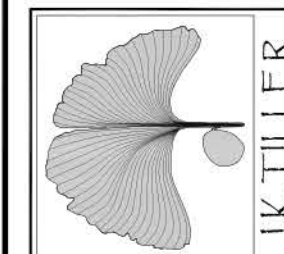




N/T
T.W. BURROWS
PAR. A, LOTS 9-12
R610-039-098

J. J. K. TILLER ASSOCIATES, INC.

LAND PLANNING	LANDSCAPE ARCHITECTURE
181 BLUFFTON ROAD, SUITE F203	BLUFFTON, SC 29910
Voice 843.815.4800	Fax 843.815.4802
	jtiller@tiller.com



May River Road Phase II Streetscape

Sheet Title:
Details

Job Number:
201613-01

Date:
June 22, 2016

Drawn:
JT

Approved:

Revisions:
July 5, 2017

Sheet

D2
Of 15

SECTION

1x4 TRIM- SECURE TRIM TO POST WITH 3" DECK SCREWS, COUNTERSINK AND FLUSH WITH FILLER

6x6 POST

2x4 RAIL

6'± OR AS SHOWN ON PLAN

EQUAL

EQUAL

20"

2'-2"

6x6

2x4

HOG WIRE

1x4 TRIM

6'-0"

5'-8"

2'-6"

2'-0"

ELEVATION

1'-3"

1'-3"

6x6 POST, TRIM TOP AT 30° ANGLE (TYP.)

BLACK VINYL COATED HOG WIRE PANELS 2"x4" ROLL CONTINUOUS FOR LENGTH OF FENCE

2x4 MID RAIL

2x4 BOTTOM RAIL

CONCRETE FOOTER

SLOPE AWAY FROM POSTS, BACKFILL WITH EXISTING SOIL

FINISH GRADE

NOTES:

1. ALL SCREWS TO BE COUNTERSUNK AND FLUSH FINISH WITH FILLER.
2. ALL WOOD TO BE PRESSURE TREATED SOUTHERN YELLOW PINE #1 OR BETTER.
3. ALL FASTENERS TO BE STAINLESS STEEL.
4. FENCE PANELS SHALL BE LEVEL AND TRUE. STEP PANELS DOWN IN 6" INCREMENTS TO ACCOMMODATE GRADE CHANGES.
5. CONTRACTOR TO PROVIDE SAMPLE PANEL FOR APPROVAL BY LANDSCAPE ARCHITECT/OWNER REPRESENTATIVE PRIOR TO PROCEEDING WITH CONSTRUCTION.

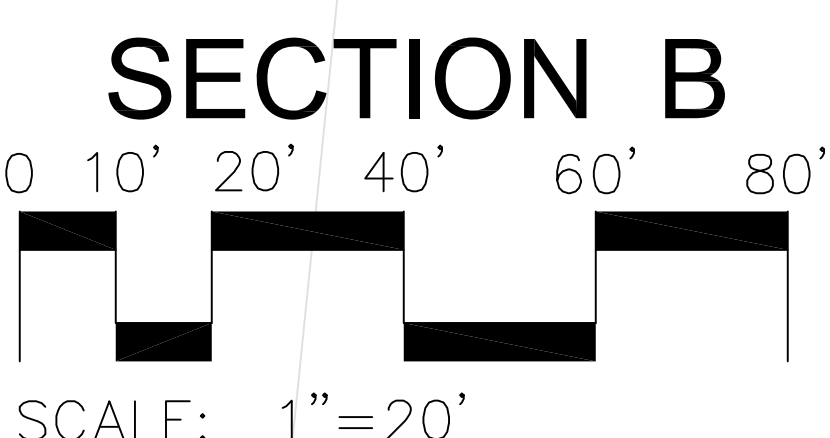
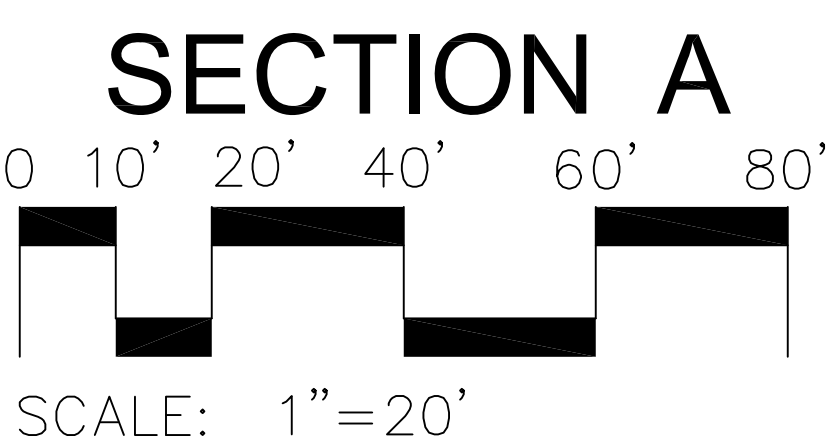
[illegible]

NOTES:


1. GATE IS TO BE 6' HIGH. GATE WIDTH VARIES BY LOCATION.
2. POSTS TO BE INSTALLED PER MANUFACTURER'S INSTRUCTIONS ALONG WITH GATE WITH FENCE POSTS.
3. ALL WIRE FABRIC AND FENCE HARDWARE SHALL BE GALVANIZED. WIRE FABRIC IS TO BE BLACK VINYL COATED 3 GAUGE 2" MESH.
4. GATE SHALL BE COMPLETED WITH BALL AND SOCKET HINGES OR APPROVED EQUAL.
5. ALL FASTENERS TO BE STAINLESS STEEL.
6. GATE PANELS SHALL BE LEVEL AND TRUE. GATE SHALL MAINTAIN AVERAGE 6" GROUND CLEARANCE TO BOTTOM RAIL.
7. CONTRACTOR TO PROVIDE SAMPLE PANEL FOR APPROVAL BY LANDSCAPE ARCHITECT/OWNER REPRESENTATIVE PRIOR TO PROCEEDING WITH CONSTRUCTION.

2 Chain Link Gate
D2 Not to Scale

1 **Living Fence**
D2 **Not to Scale**



- ZONE #1d CONTROLS THE SUBSURFACE INLINE DRIP TUBING (ECO-WRAP) IN SOD STRIP.
- TUBING TO BE PLACED 4" UNDER FINISH GRADE OF AMENDED SOIL.
- SEE NOTES AND DETAILS.



A circular diagram with three horizontal sections. The top section is labeled '21.8', the middle section is labeled '1d', and the bottom section is labeled '1'.

SECTION A

SECTION B

**MAY RIVER ROAD STREETSCAPE
PHASE II**
BLUEFTON, SC

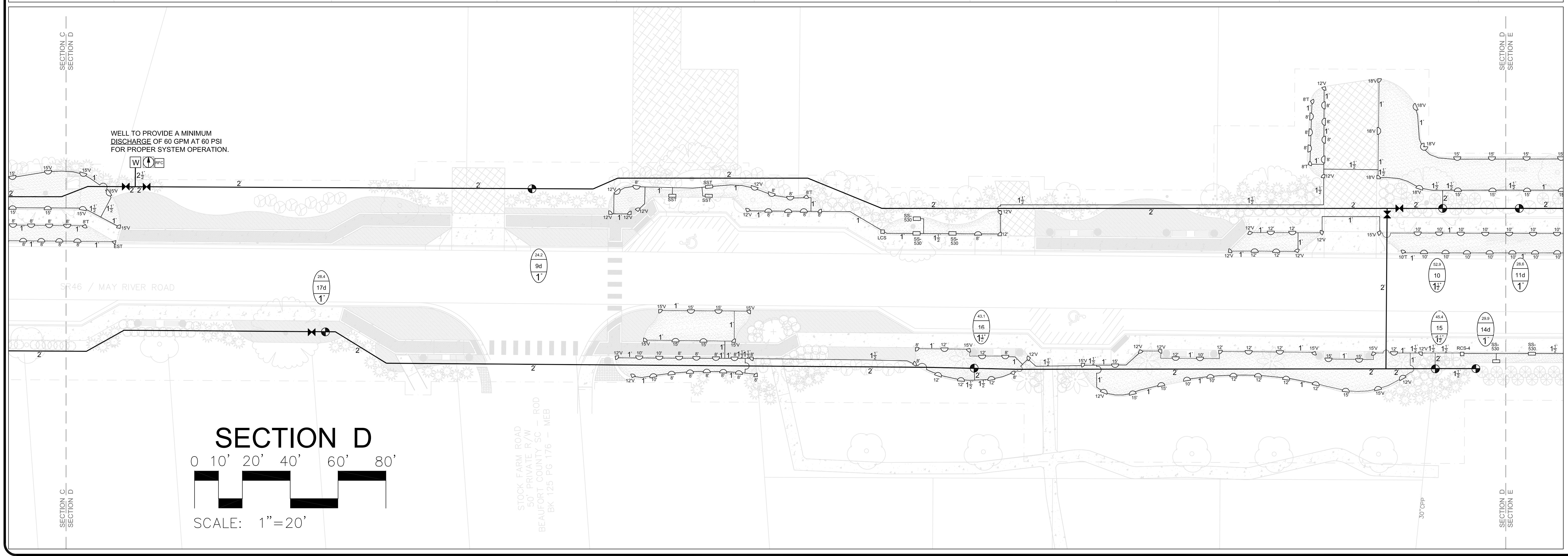
IRRIGATION AREA OF COVERAGE

Simmons Irrigation Supply
P.O. BOX 10
526 SIDNEYS ROAD
WALTERBORO, SC 29488
PH: (843) 538-5566
FAX: (843) 538-2068
sising@loucountry.com

THE DESIGN AND SPECIFICATIONS FOR THIS PROJECT PREPARED BY SIMMONS IRRIGATION SUPPLY ARE SUPPLIED FOR USE BY OUR CLIENT ONLY AND MAY NOT BE COPIED OR REPRODUCED BY ANY PERSON OR PERSONS OTHER THAN SAID CLIENT OR HIS AGENTS. THIS DESIGN AND SPECIFICATIONS ARE THE PROPERTY OF SIMMONS IRRIGATION SUPPLY AND SHALL BE USED ONLY IN CONNECTION WITH THE PARTICULAR WORK AND PRODUCTS SPECIFIED AND SHALL NOT BE USED IN CONNECTION WITH ANY OTHER PROJECT WITHOUT THE EXPRESS WRITTEN CONSENT OF SIMMONS IRRIGATION SUPPLY.

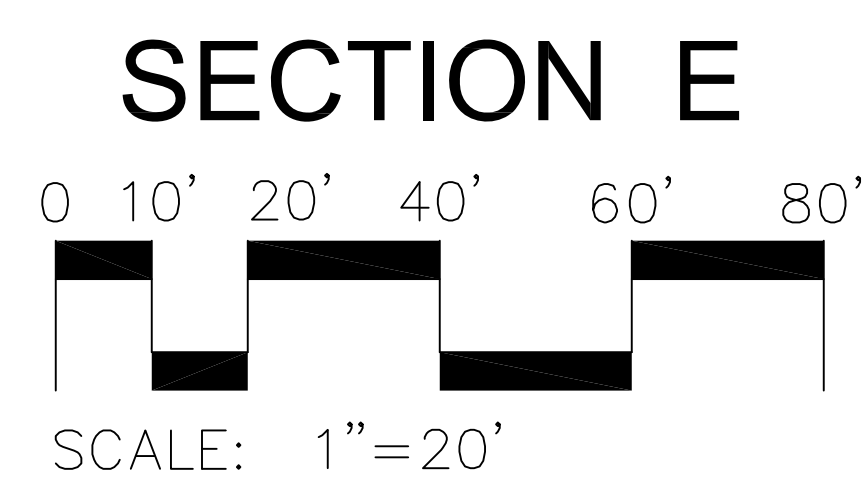
Hunter®

REVISED 06-28-17	
Acad #:	3829-1
Date:	03-06-2017
Scale:	1" = 20'
Drawn:	TMM/CMN
Sheet:	1 OF 10



Hunter®

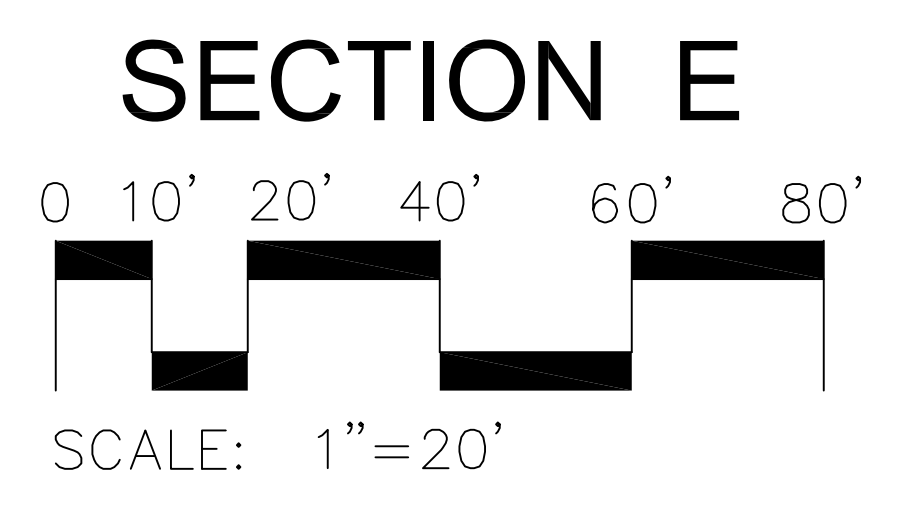
REVISED 06-28-17	
Acad #:	3829-1
Date:	03-06-2017
Scale:	1" = 20'
Drawn:	TMM/CMN
Sheet:	2 OF 10



SPRAY IRRIGATION LAYOUT

Sheet: 3 OF 10

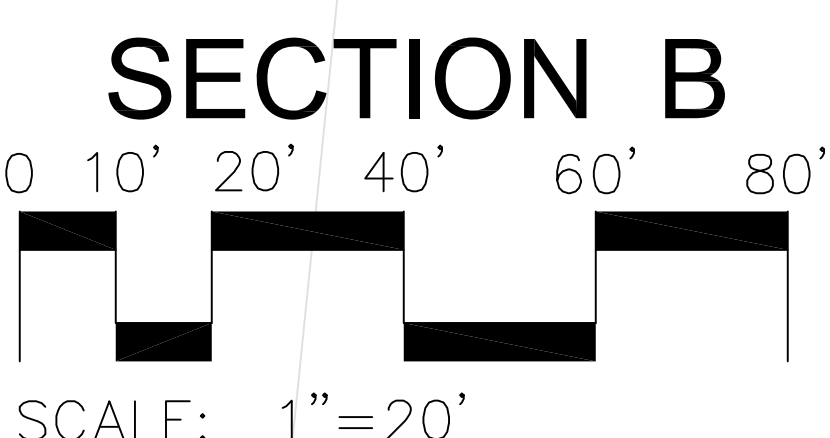
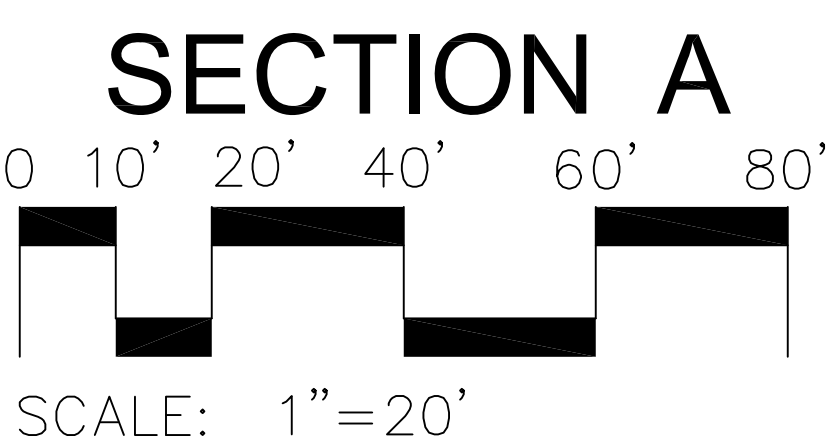
THE DESIGN AND SPECIFICATIONS FOR THIS PROJECT PREPARED BY SIMMONS IRRIGATION SUPPLY ARE SUPPLIED FOR USE BY OUR CLIENT ONLY AND MAY NOT BE COPIED OR REPRODUCED BY ANY PERSON OR PERSONS OTHER THAN SAID CLIENT OR HIS AGENTS. THIS DESIGN AND SPECIFICATIONS ARE THE PROPERTY OF SIMMONS IRRIGATION SUPPLY AND SHALL BE USED ONLY IN CONNECTION WITH THE PARTICULAR WORK AND PRODUCTS SPECIFIED AND SHALL NOT BE USED IN CONNECTION WITH ANY OTHER PROJECT WITHOUT THE EXPRESS WRITTEN CONSENT OF SIMMONS IRRIGATION SUPPLY.



DRIP IRRIGATION LAYOUT

REVISED 06-28-17	
Acad #:	3829-1
Date:	03-06-2017
Scale:	1" = 20'
Drawn:	TMM/CMN
Sheet:	6 OF 10

THE DESIGN AND SPECIFICATIONS FOR THIS PROJECT PREPARED BY SIMMONS IRRIGATION SUPPLY ARE SUPPLIED FOR USE BY OUR CLIENT ONLY AND MAY NOT BE COPIED OR REPRODUCED BY ANY PERSON OR PERSONS OTHER THAN SAID CLIENT OR HIS AGENTS. THIS DESIGN AND SPECIFICATIONS ARE THE PROPERTY OF SIMMONS IRRIGATION SUPPLY AND SHALL BE USED ONLY IN CONNECTION WITH THE PARTICULAR WORK AND PRODUCTS SPECIFIED AND SHALL NOT BE USED IN CONNECTION WITH ANY OTHER PROJECT WITHOUT THE EXPRESS WRITTEN CONSENT OF SIMMONS IRRIGATION SUPPLY.



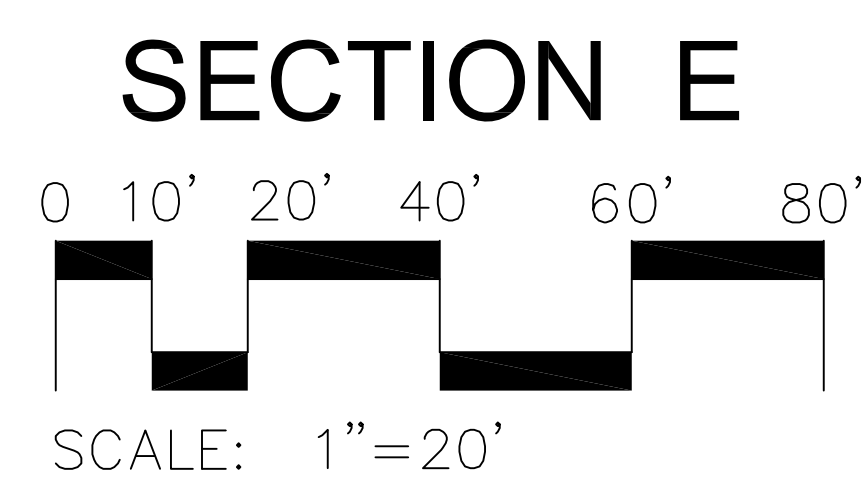
Simmons Irrigation Supply
P.O. BOX 10
526 SIDNEY'S ROAD
WALTERBORO, SC 29488
PH: (843)538-5566
FAX: (843)538-2068
sisinc@lowcountry.com

MAY RIVER ROAD STREETScape
PHASE II
BLUEFTON, SC

IRRIGATION SLEEVES LAYOUT

Hunter®

REVISED 06-28-17	
Acad #:	3829-1
Date:	03-06-2017
Scale:	1" = 20'
Drawn:	TMM/CMN
Sheet:	7 OF 10



IRRIGATION SLEEVES LAYOUT

REVISED 06-28-17	
Acad #:	3829-1
Date:	03-06-2017
Scale:	1" = 20'
Drawn:	TMM/CMN
Sheet:	9 OF 10

THE DESIGN AND SPECIFICATIONS FOR THIS PROJECT PREPARED BY SIMMONS IRRIGATION SUPPLY ARE SUPPLIED FOR USE BY OUR CLIENT ONLY AND MAY NOT BE COPIED OR REPRODUCED BY ANY PERSON OR PERSONS OTHER THAN SAID CLIENT OR HIS AGENTS. THIS DESIGN AND SPECIFICATIONS ARE THE PROPERTY OF SIMMONS IRRIGATION SUPPLY AND SHALL BE USED ONLY IN CONNECTION WITH THE PARTICULAR WORK AND PRODUCTS SPECIFIED AND SHALL NOT BE USED IN CONNECTION WITH ANY OTHER PROJECT WITHOUT THE EXPRESS WRITTEN CONSENT OF SIMMONS IRRIGATION SUPPLY.

PRODUCTS

HUNTER ACC SERIES DECODER CONTROLLER

- REAL TIME FLOW SENSING: GIVES ALARM WHEN NEEDED.
- ONLY TWO WIRES: UP TO 99 STATIONS. EASY TO PROGRAM DECODERS: NO COMPLICATED SERIAL NUMBERS.
- NO EXTRA GROUNDING DECODERS REQUIRED: SAVES MONEY. EACH DECODER CAN BE GROUNDED AS NEEDED.
- WORKS WITH PUMPS AND MASTER VALVES: RUN PUMPS AND MASTER VALVES VIA CONVENTIONAL OR DECODER OUTPUTS.
- UP TO 6 TWO-WIRE PATHS OF UP TO 15,000 FEET EACH: COST-EFFICIENT WIRING FOR THE LARGEST SYSTEMS.
- EASY UPGRADE: HUNTER MMS CENTRAL CONTROL: CHOOSE HARDWARE, PHONE OR RADIO CONTROL.
- DIAGNOSTIC OUTPUT LEADS AND ELECTRICAL CURRENT DISPLAY: SHOWS AT A GLANCE BOTH STATION ACTIVITY AND LINE STATUS.
- MULTIPLE SENSOR HOOKUPS: ACCOMODATE DEVICES FOR WEATHER AND FLOW. PROVIDE AUTOMATIC SHUTOFF IN ABNORMAL CONDITIONS.

HUNTER WIRELESS RAIN/FREEZE-CLIK SYSTEM

- MODELS: RAIN-CLIK, RAIN/FREEZE-CLIK, WIRELESS RAIN-CLIK, WIRELESS RAIN/FREEZE-CLIK
- QUICK RESPONSE FEATURE SHUTS OFF THE SYSTEM AS SOON AS IT STARTS RAINING.
- MAINTENANCE-FREE DESIGN WITH 10-YEAR BATTERY LIFE.
- ADJUSTABLE VENT RING ALLOWS FOR SETTING OF RESET DELAY.
- RUGGED POLYCARBONATE HOUSING AND METAL EXTENSION ARM.
- RAIN-CLIK INCLUDES 25' OF 20 GAUGE SHEATHED, TWO-CONDUCTOR, UL-APPROVED WIRE.
- WIRE-FREE OPERATION ALLOWS EASY INSTALLATION ON NEW OR EXISTING SYSTEMS.
- SENSOR OPERATES UP TO 800 FEET FROM RECEIVER UNIT.
- BUILT-IN BYPASS SWITCH ON RECEIVER PANEL.
- WIRELESS RAIN/FREEZE-CLIK SENSOR PROTECTS AGAINST ICE CAUSED BY IRRIGATION ON LANDSCAPES, ROADS, AND WALKWAYS.
- COMPATIBLE WITH MOST CONTROLLERS.
- GENERAL WARRANTY: 5 YEARS.
- BATTERY WARRANTY (WIRELESS MODEL): 10 YEARS.
- WIRING: NORMALLY CLOSED OR NORMALLY OPEN.
- TIME TO TURN OFF IRRIGATION SYSTEM: 2 TO 5 MINUTES APPROX. FOR QUICK RESPONSE.
- TIME TO RESET QUICK RESPONSE: 4 HOURS APPROX. UNDER DRY, SUNNY CONDITIONS.
- TIME TO RESET WHEN FULLY WET: 3 DAYS APPROX. UNDER DRY, SUNNY CONDITIONS.
- OPERATING TEMPERATURE: 32° F TO 130° F.
- OPTIONAL USER INSTALLED CUTTER MOUNT FOR RAIN-CLIK (ORDER SGM).
- SWITCH RATING: 24 VAC, 3 A
- FREEZE SENSOR SHUTS SYSTEM OFF WHEN TEMPERATURES FALL BELOW 37° F (RAIN/FREEZE-CLIK MODEL).
- SYSTEM OPERATING FREQUENCY: 433 MHz.
- COMMUNICATION RANGE UP TO 800 FEET LINE OF SIGHT.
- WIRELESS RAIN/FREEZE-CLIK SHUTS SYSTEM OFF WHEN TEMPERATURES FALL BELOW 37° F.
- RECEIVER INPUT POWER: 24 VAC (FROM CONTROLLER).

HUNTER ICV SERIES ELECTRIC VALVE

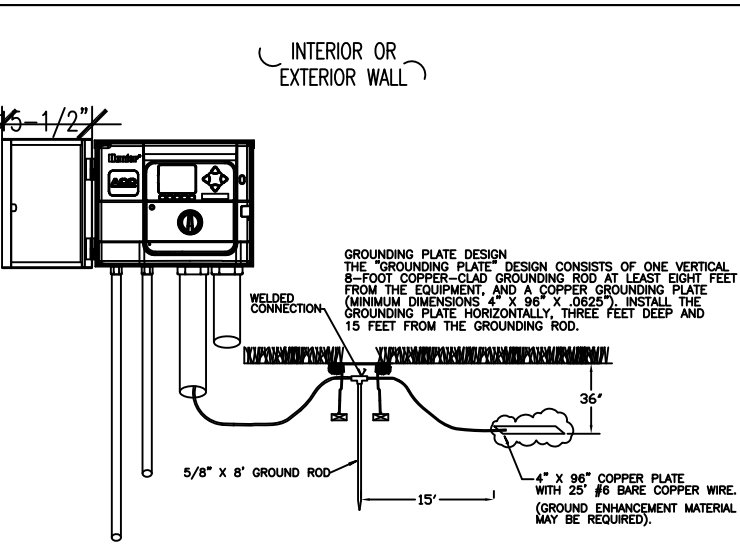
- 1", 1 1/2", 2" & 3".
- GLASS-FILLED NYLON CONSTRUCTION – 220 PSI RATING FOR MAXIMUM STRENGTH AND STURDINESS.
- INTERNAL MANIFOLD BLEED – KEEPS VALVE BOX DRY.
- CAPTIVE SOLENOID PLUNGER – NO MORE LOST PARTS WHEN SERVICING.
- CAPTIVE BONNET BOLTS WITH MATCHING BRASS BODY INSERTS TO PROVIDE EASE OF SERVICE AND ELIMINATES LOST PARTS.
- FABRIC REINFORCED DIAPHRAGM PROVIDES RELIABLE OPERATION UP TO 220 PSI.
- OPTIONAL RECLAIMED WATER IDENTIFICATION HANDLE FOR FIELD IDENTIFICATION OF NON-POTABLE WATER SUPPLY.
- OPTIONAL ACCU-SET PRESSURE REGULATOR TO MAINTAIN A SAFE, CONSTANT WATER PRESSURE LEVEL.
- PRESSURE: 20 TO 220 PSI.
- FLOW: 0.10 TO 300 GPM.
- POWER: 24VAC.

AGRFIM DURA-FLO PC DRIPPERLINE

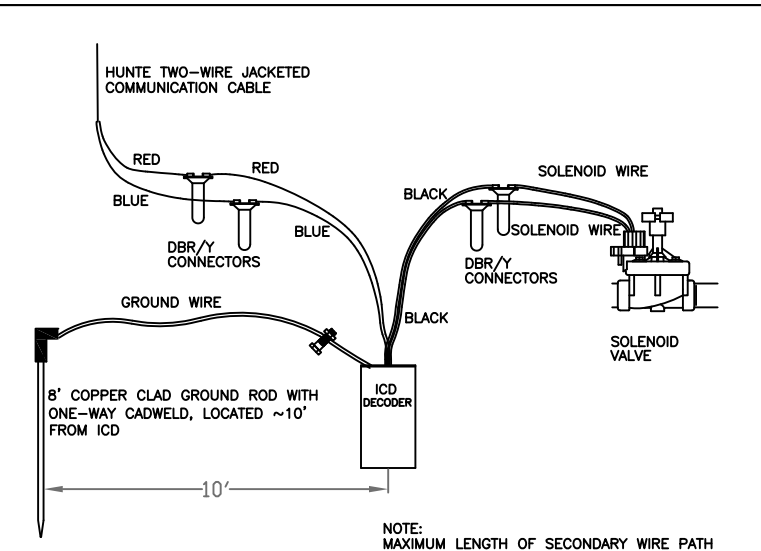
- SELF-CLEANING.
- BUILT-IN FILTER SLITS AND RAISED INLET TO MINIMIZE CLOGGING.
- SILICONE DIAPHRAGM.
- OUTSTANDING EMISSION UNIFORMITY.
- DUAL 180° APART, WATER OUTLET HOLES.
- EMITTERS COLOR CODED FOR EASY FLOW RATE IDENTIFICATION.
- WIDE VARIETY OF SPACINGS AVAILABLE.
- UV STABILIZED.
- AVAILABLE IN BLACK, BROWN OR PURPLE.
- PRESSURE COMPENSATING FROM 10 TO 60 PSI.
- 1/2, 1 OR 2 GPH FLOW RATES AVAILABLE.
- TUBING SIZE OF .600" I.D. X .700" O.D. WALL = .045" AND .550" I.D. X .640" O.D. WALL = .045".
- RECOMMENDED FILTRATION (140 MESH FOR 1/2 GPH, 120 MESH FOR 1 GPH, AND 80 MESH FOR 2 GPH EMITTER).

HUNTER ECO-WRAP SUB-SURFACE TUBING

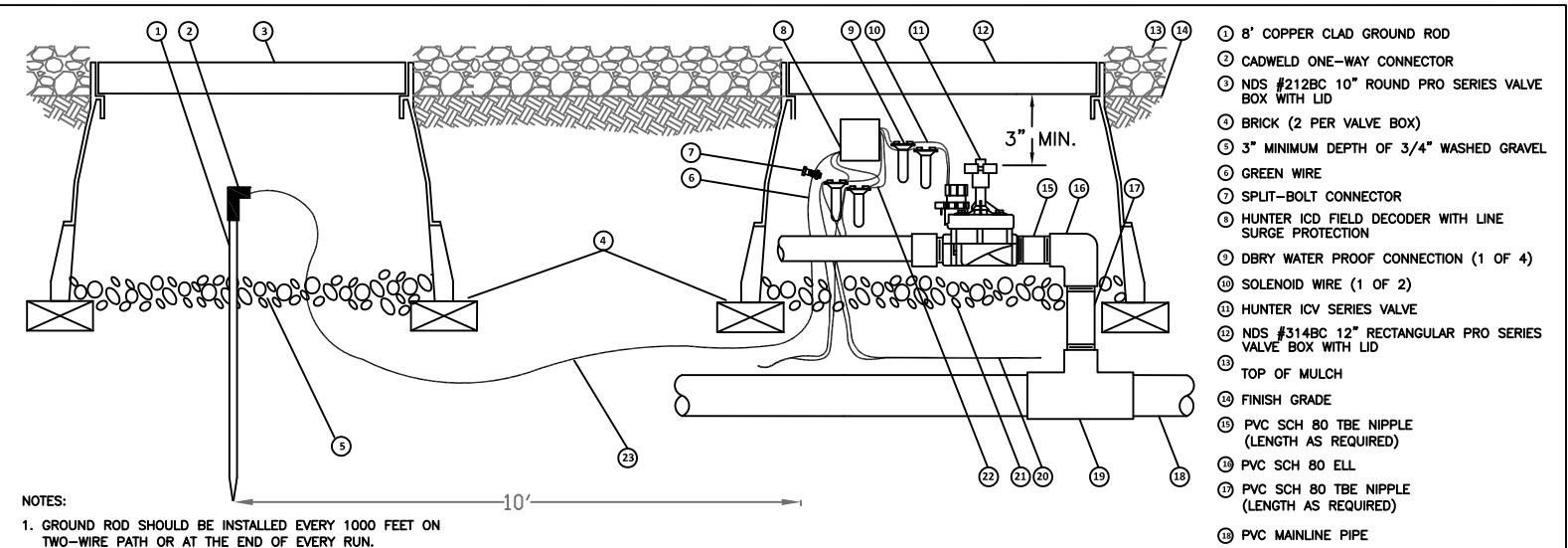
- PRE-ASSEMBLED.
- PRESSURE COMPENSATING, NON-DRAINING INLINE EMITTER TUBING WRAPPED IN POLYPROPYLENE FLEECE MATERIAL.
- 17mm TUBING WITH 0.6 GPH EMITTERS, UNIFORMLY SPACED AT 12" INTERVALS.
- OPERATING PRESSURE: 15 TO 50 PSI.
- COMPATABLE WITH 17MM INSERT BARB FITTINGS.
- RECOMMENDED FILTRATION: 120 MESH.
- RECOMMENDED INSTALLATION DEPTH RANGE: 4" – 12".



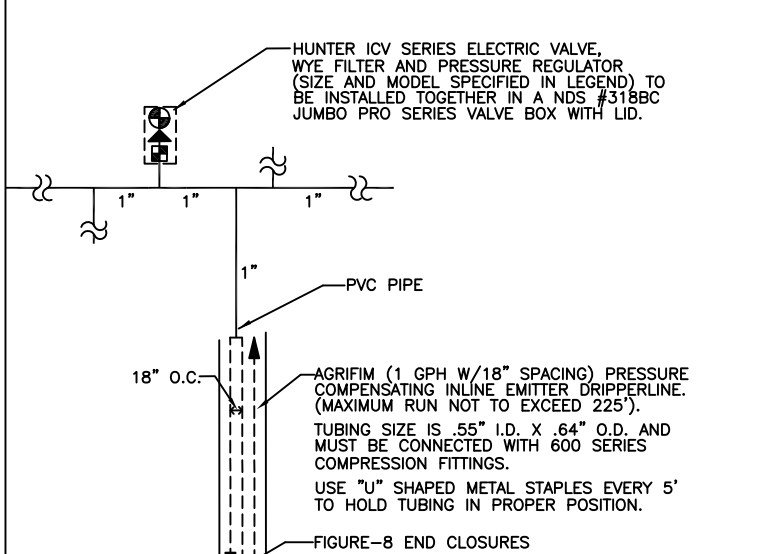
ACC-99D CONTROLLER W/GROUNDING PLATE



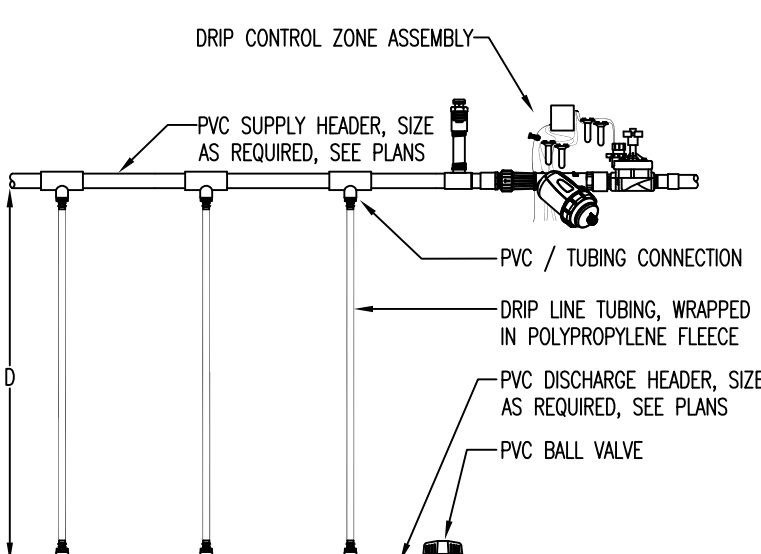
HUNTER DECODER WITH SOLENOID



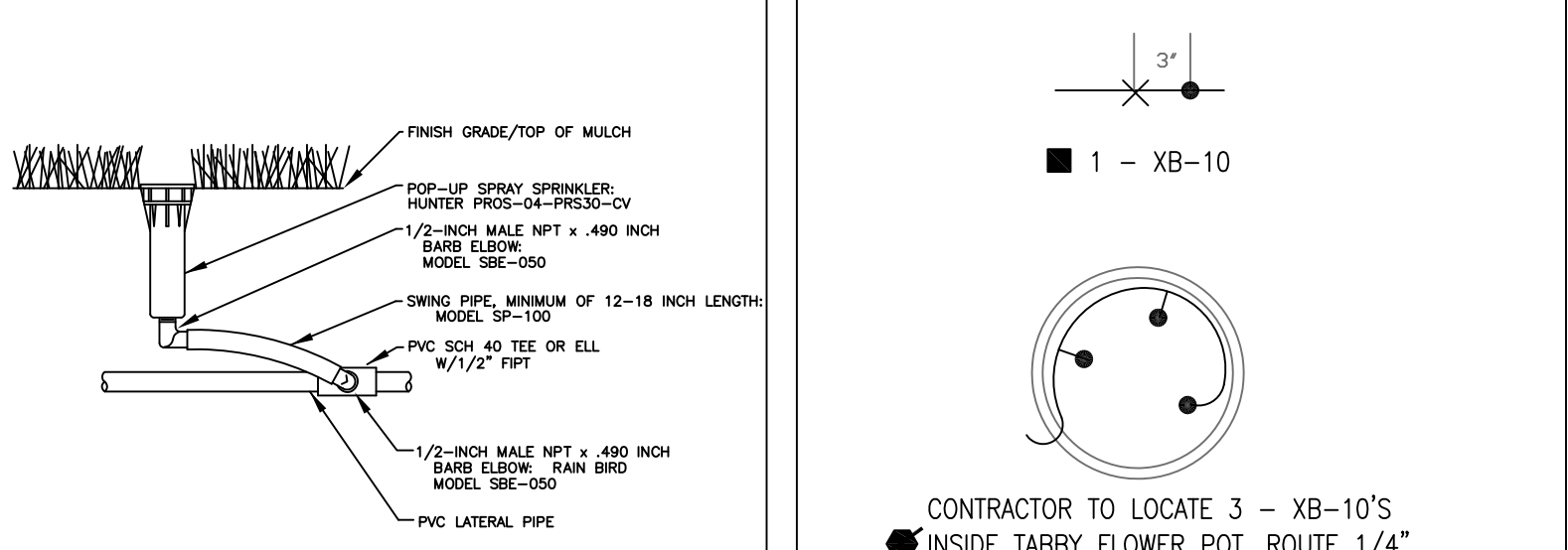
ICV VALVE WITH DECODER



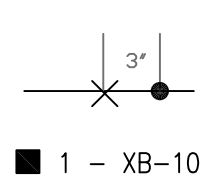
DRIP DETAIL FOR BEDS



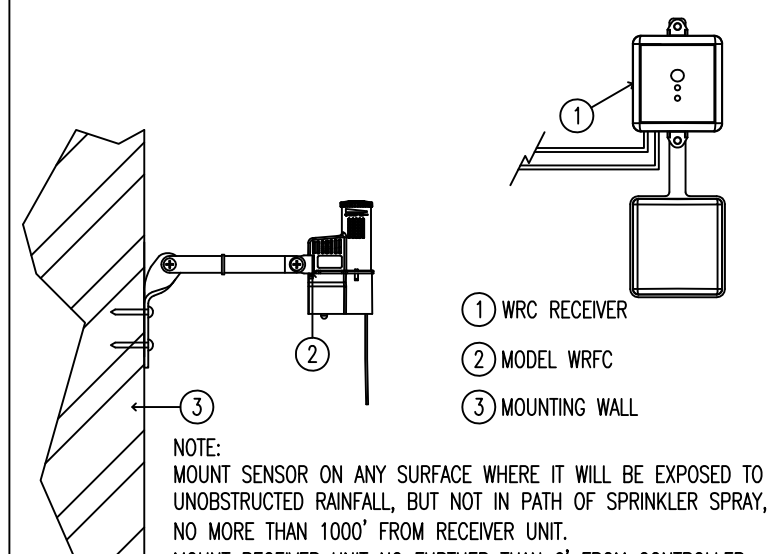
SUBSURFACE ECO-WRAP DRIP TUBING



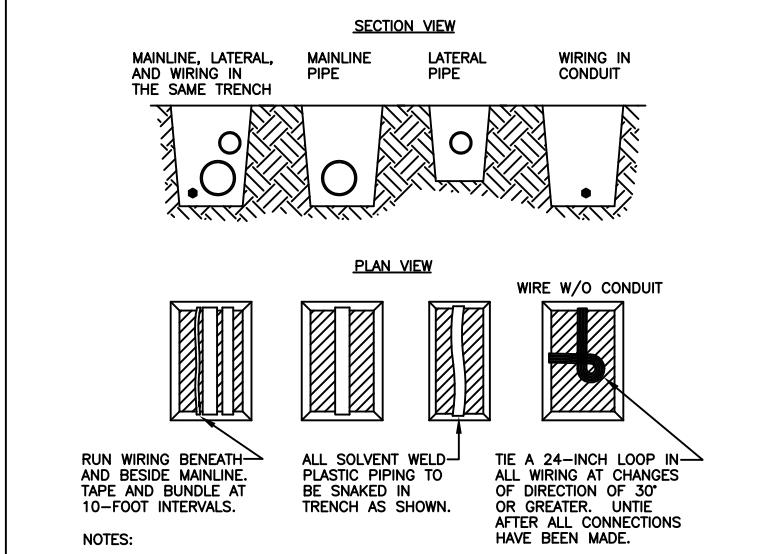
HUNTER PROS-06 POP-UP SPRINKLER



EMITTER KEY



WIRELESS RAIN/FREEZE-CLIK



PIPE & WIRE TRENCHING

GENERAL NOTES

PROJECT CONDITIONS

- PERFORM SITE SURVEY, RESEARCH PUBLIC UTILITY RECORDS, AND VERIFY EXISTING UTILITY LOCATIONS. VERIFY THAT IRRIGATION SYSTEM PIPING MAY BE INSTALLED IN COMPLIANCE WITH ORIGINAL DESIGN AND REFERENCED STANDARDS.

WATER SOURCE

- INSTALLER SHOULD CONFIRM THE MINIMUM DISCHARGE REQUIREMENTS OF THE WATER SOURCE AS INDICATED ON THE DRAWING LEGEND PRIOR TO INSTALLATION.
- IF SOURCE IS LESS THAN MINIMUM REQUIREMENT, CONSULT WITH A DESIGNER FOR POSSIBLE HYDRAULIC CHANGES.

SLEEVING

- A MINIMUM OF PR-200 PVC SLEEVES SHOULD BE USED UNDER ANY HARDSCAPING. (EXAMPLE: SIDEWALKS AND DRIVES).
- SLEEVES TO BE A MINIMUM OF (2) PIPE SIZES LARGER THAN THE PIPE RUNNING THROUGH IT.
- A SEPARATE SLEEVE IS RECOMMENDED FOR WIRE.
- WHERE MAINLINE AND WIRE ARE ROUTED THROUGH A COMMON SLEEVE/BORE, WIRE TO BE INSTALLED IN A SEPARATE INNER CONDUIT.

PIPE AND FITTINGS

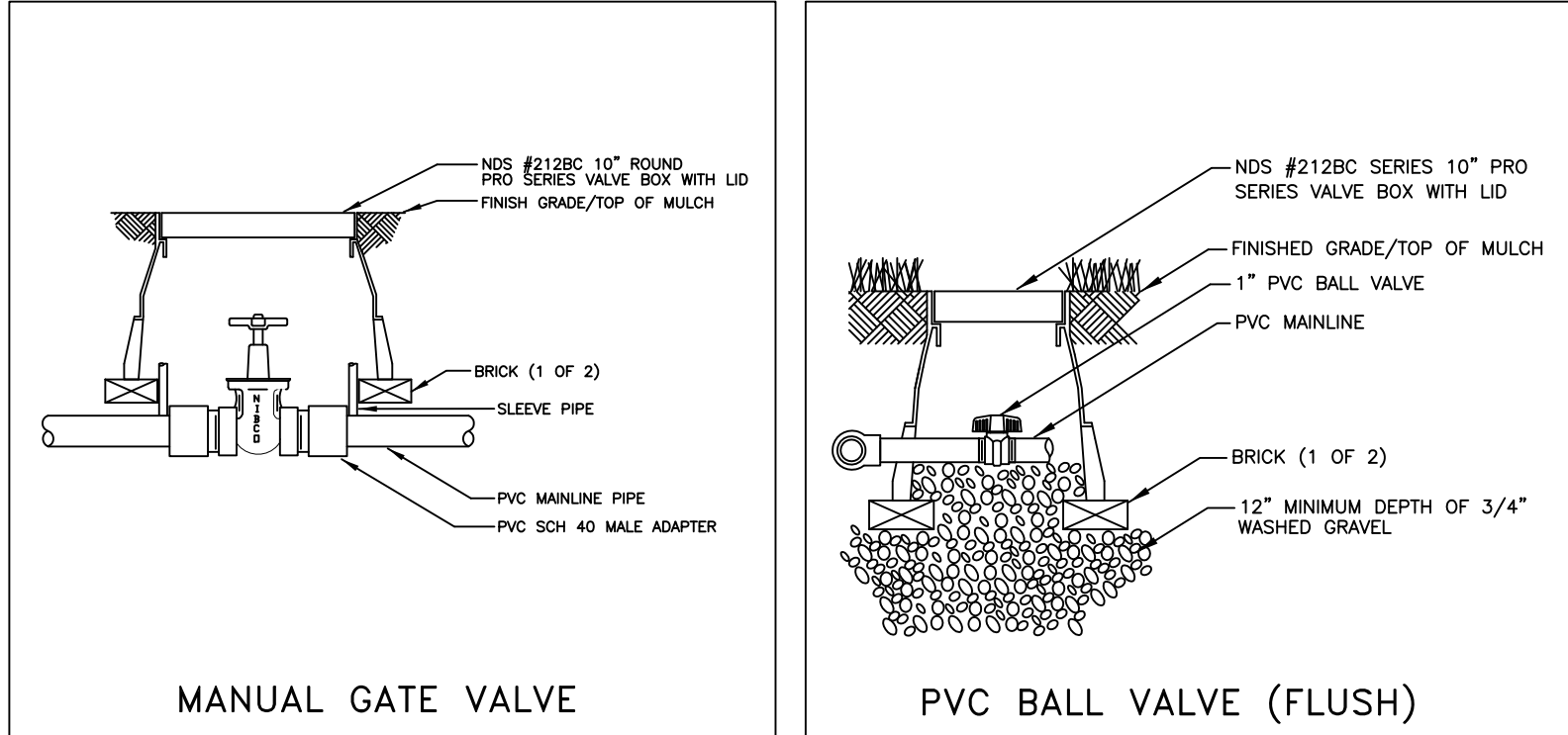
- ALL PIPE 1" OR SMALLER TO BE PR-200 SDR-21 SOLVENT WELD PVC PIPE.
- ALL PIPE 1 1/4" OR LARGER TO BE PR-160 SDR-26 SOLVENT WELD PVC PIPE.
- ALL PVC PIPE FITTINGS TO BE SCHEDULE 40, SOCKET-TYPE.
- PVC PIPING AND FITTINGS SOLVENT-CEMENTED JOINTS TO BE CONSTRUCTED UTILIZING CLEANER, PURPLE PRIMER, AND SOLVENT CEMENTS.
- GENERAL LOCATIONS AND ARRANGEMENTS: DRAWINGS INDICATED GENERAL LOCATION AND ARRANGEMENT OF PIPING SYSTEMS. INDICATED LOCATIONS AND ARRANGEMENTS WERE USED FOR DESIGN LEGIBILITY, TO SIZE PIPE AND CALCULATE FRICTION LOSS, AND OTHER DESIGN CONSIDERATIONS.
- MINIMUM COVER: PROVIDE THE FOLLOWING MINIMUM COVER OVER TOP OF BURIED PIPING OR 12" BELOW THE AVERAGE LOCAL FROST DEPTH, WHICHEVER IS THE GREATER DEPTH.
- PRESSURE PIPING: 18" OF COVER FOR PIPE 2 1/2" AND SMALLER; 24" FOR PIPE 3" AND 4"; AND 30" FOR PIPE 6" AND LARGER.
- CIRCUIT PIPING: 18" OF COVER FOR CIRCUIT PIPE.
- DRAIN PIPING: 18" OF COVER FOR PIPE 4" AND SMALLER; 24" FOR PIPE 6" AND LARGER.
- SLEEVES: 24" OF COVER FOR PIPE 6" AND SMALLER; 30" FOR PIPE 8" AND LARGER.
- PRIOR APPROVAL BY LANDSCAPE ARCHITECT MUST BE OBTAINED FOR ALL TRENCHING AROUND EXISTING SPECIMEN/LARGE TREES.
- ONLY HAND TRENCHING WILL BE ALLOWED WITHIN THE "TREE SAVE" AREAS.

SCHEDULING

- ADJUST SETTINGS OF CONTROLLERS AND AUTOMATIC CONTROL VALVES, AND PROVIDE WRITTEN SCHEDULE TO OWNER.

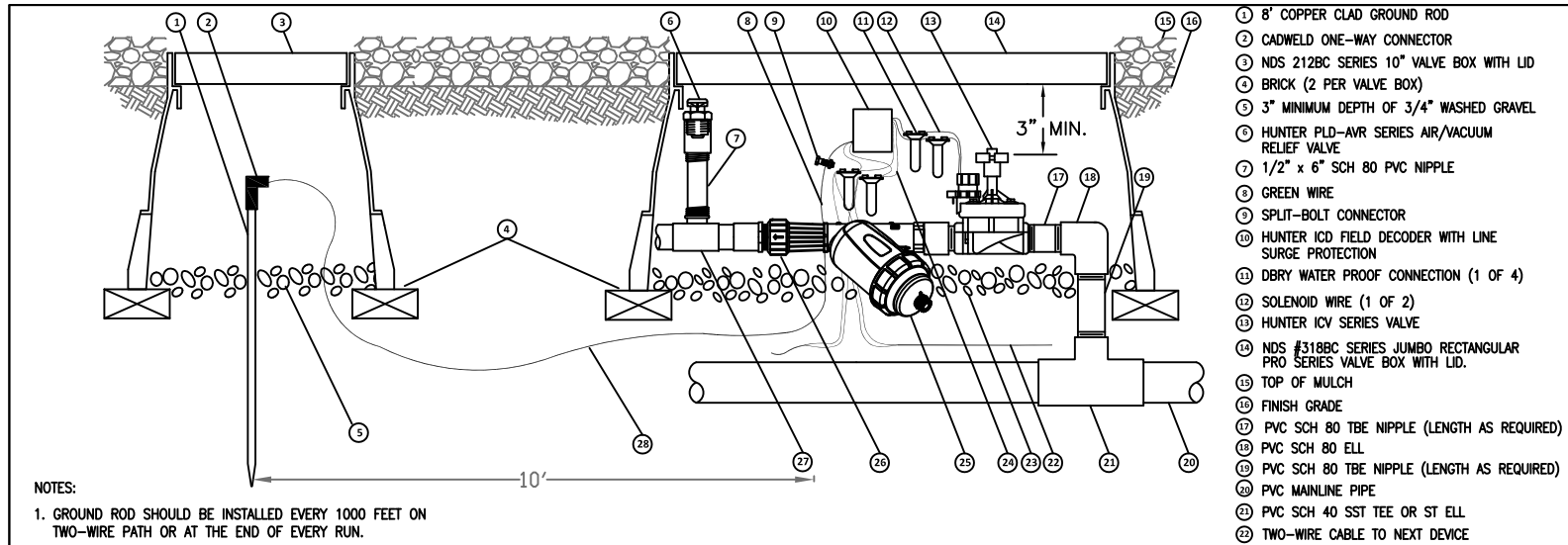
ELEVATION

- THE PRESSURE REQUIREMENT OF THE WATER SOURCE IS BASED ON NO MORE THAN 2 FEET OF RISE IN ELEVATION FROM WATER SOURCE THROUGHOUT THE IRRIGATION COVERAGE AREA. IF SITE HAS GREATER ELEVATION CHANGE, CONSULT WITH DESIGNER FOR POSSIBLE HYDRAULIC CHANGE.



MANUAL GATE VALVE

PVC BALL VALVE (FLUSH)

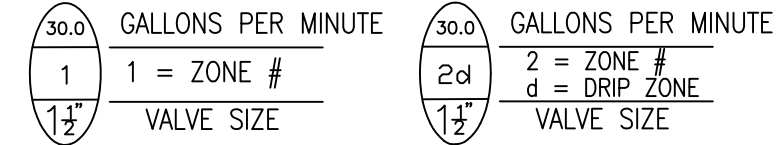


DRIP VALVE ASSEMBLY WITH DECODER

WIRING

- SOLID COPPER CONDUCTOR, INSULATED CABLE, SUITABLE FOR DIRECT BURIAL.
- LOW-VOLTAGE, BRANCH CABLES: 14 AWG PE DOUBLE JACKETED HUNTER COMMUNICATION CABLE.
- SPLICING MATERIALS: 3M DBR/Y CONNECTORS OR APPROVED EQUAL.
- 8' EARTH GROUND (COPPER ROD) SHOULD BE CONNECTED TO ICD GROUND WIRE EVERY 10 STATIONS OR 1,000 FEET ALONG THE WIRE PATH (WHICHEVER IS LESS) AND AT THE END OF EVERY WIRE RUN.
- GROUND ROD TO BE PLACED APPROXIMATELY 8-10 FEET FROM COMMUNICATION CABLE/MAINLINE ROUTE IN A PERPENDICULAR ORIENTATION.

VALVE/ZONE IDENTIFICATION



SPRINKLER INSTALLATION

- LOCATION OF SPRINKLERS AND DEVICES: DESIGN LOCATION IS APPROXIMATE. MINOR FIELD ADJUSTMENTS MAY BE NECESSARY TO AVOID PLANTINGS AND OBSTRUCTIONS SUCH AS SIGNS AND LIGHT STANDARDS.
- SPRINKLERS TO BE SPACED NO GREATER THAN 50% – 55% OF DIAMETER OF THROW AT OPTIMUM PERFORMANCE PRESSURE. THIS WILL ACHIEVE "HEAD TO HEAD" COVERAGE PERFORMANCE.
- FLUSH CUTTING TUBING WITH FULL HEAD OF WATER AND INSTALL SPRINKLERS AFTER HYDROSTATIC TEST IS COMPLETE.
- INSTALL LAWN SPRINKLERS AT MANUFACTURER'S RECOMMENDED HEIGHTS.
- INSTALL SHRUBBERY SPRINKLERS AT HEIGHTS INDICATED.
- LOCATE PART-CIRCLE SPRINKLERS TO MAINTAIN A MINIMUM DISTANCE OF 6" FROM WALLS AND 3" FROM OTHER OBSTRUCTIONS (SIDEWALKS, CURBS) UNLESS OTHERWISE INDICATED.
- CAREFULLY ADJUST LAWN SPRINKLERS SO THEY WILL BE FLUSH WITH, OR NOT MORE THAN 1/2" ABOVE, FINISH GRADE AFTER COMPLETION OF LANDSCAPE WORK.
- CAREFULLY ADJUST ALL SPRINKLERS IN MULCH AREAS SO THEY WILL BE PLUMB AND FLUSH WITH TOP OF MULCH GRADE.
- ALL SPRAYHEAD NOZZLES INDICATED ON PLAN.
- USE VANS (VARIABLE ARC NOZZLE) WHERE INDICATED ON PLAN.

VALVE INSTALLATION

- ALL VALVES (MANUAL AND ELECTRIC) TO BE INSTALLED IN A NDS #212BC 10" ROUND PRO SERIES VALVE BOX WITH LID (UNLESS OTHERWISE NOTED).
- CONTRACTOR TO ADJUST THE FLOW CONTROL HANDLE IN ORDER TO ACHIEVE PROPER VALVE OPERATION AND OPTIMUM SPRINKLER PERFORMANCE.
- VALVES SHALL NOT BE PLACED WITHIN 5 FEET OF ANY DRIVEWAY, OR WHERE THEY CAN BE DAMAGED BY VEHICLES.

DRIP INSTALLATION

- IRRIGATION CONTRACTOR OR LANDSCAPE MANAGER MAY NEED TO ADJUST THE NUMBER OF EMITTERS AND THE CONTROLLER RUN TIME SCHEDULE IN ORDER TO ACHIEVE OPTIMUM GROWING CONDITIONS FOR EACH PLANT IN REGARD TO: PLANT SIZE, TYPE, MATURITY, SOIL CONDITIONS, SITE LOCATION, DRAINAGE, AND PLANTING SEASON.
- THIS DESIGN UTILIZES AN INLINE PRESSURE COMPENSATING DRIPPERLINE IN A GRID LAYOUT. THE EMITTERS ARE INCORPORATED AT 18" INTERVALS ALONG THE TUBING AND THE LINES ARE SPACED 18" BETWEEN ROWS (SEE DETAIL). EACH EMITTER OUTPUT IS 1.0 GPH. THIS GRID LAYOUT TO BE USED WITH LOAM AND CLAY SOIL TYPES. SPACING MAY NEED TO BE REDUCED OR SOIL NEEDS TO BE AMENDED FOR SANDY SOIL IN ORDER TO INCREASE THE MOVEMENT OF THE WATER IN THE SOIL PROFILE AND WATER HOLDING CAPACITY.
- NO DRIPPERLINE RUN TO EXCEED 225' FROM CONNECTION TO PVC LATERAL HEADER PIPE.
- ZONES BASED ON A MINIMUM OF 30 PSI.

SUBSURFACE DRIP INSTALLATION

- THE SUB-SURFACE ECO-WRAP TUBING TO BE PLACED 4" UNDER FINISH GRADE OF AMENDED SOIL IN SID STRIP.
- THE EMITTERS ARE INCORPORATED AT 12" INTERVALS ALONG THE TUBING AND THE LINES ARE SPACED 12" BETWEEN ROWS (SEE DETAIL). EACH EMITTER OUTPUT IS .60 GPH. THIS LAYOUT TO BE USED WITH LOAM SOIL TYPES.

ITEM	SYMBOL	DESCRIPTION
1		HUNTER ACC-99D SERIES DECODER CONTROLLER
2		HUNTER WRF-CLIK SERIES WIRELESS RAIN/FREEZE SENSOR
3		HUNTER ICV SERIES ELECTRIC VALVE
4		HUNTER PROS-04-PRS30-CV SERIES 4" POPUP SPRAYHEAD
5		RAIN BIRD XB-10 SERIES XERI-BUG EMITTER (QUANTITY: 3)
6		RAIN BIRD XB-10 SERIES XERI-BUG EMITTER (QUANTITY: 1)
7		HUNTER PLD-AVR SERIES AIR/VACUUM RELIEF VALVE
8		HUNTER ALFS10150-L SERIES 1" LARGE BODY PLASTIC WYE FILTER
9		SENNINGER PF-30-HF SERIES 1 1/4" x 1" PRESSURE REGULATOR
10		PVC BALL VALVE (FLUSH)
11		FIGURE 8 END CLOSURE
12		WELL – IRRIGATION ONLY, VFD CONTROLLED
13	----	AGRFIM (1 GPH X 18" SPACING) PRESSURE COMPENSATING INLINE EMITTER DRIPPERLINE
14	----	HUNTER ECO-WRAP SERIES SUBSURFACE, FLEECE WRAPPED PLD-06-12 PRESSURE COMPENSATING INLINE EMITTER DRIPPERLINE
15		.520 x .620 BLANK TUBING
16		LATERAL PIPE
17		MAINLINE PIPE
18		NIBCO T-113BHW BRONZE 200 W.O.G. GATE VALVE

WATER SOURCE: WELL TO PROVIDE A MINIMUM DISCHARGE OF 60 GPM AT 60 PSI FOR SYSTEM TO OPERATE PROPERLY.

MAY RIVER ROAD STREETSCAPE PHASE II BLUFFTON, S.C.

IRRIGATION DETAILS

Simmons Irrigation Supply
P.O. BOX 10
526 SIDNEYS ROAD
WALTERBORO, SC 29488
PH: (843)538-5566
FAX: (843)538-2068
sstn@loucountry.com

Hunter®

REVISED 06-28-17
Acad #: 3829-2
Date: 03-06-2015
Scale: N.T.S.
Drawn: TMM/CMN
Sheet: 10 OF 10