

# City of Avondale

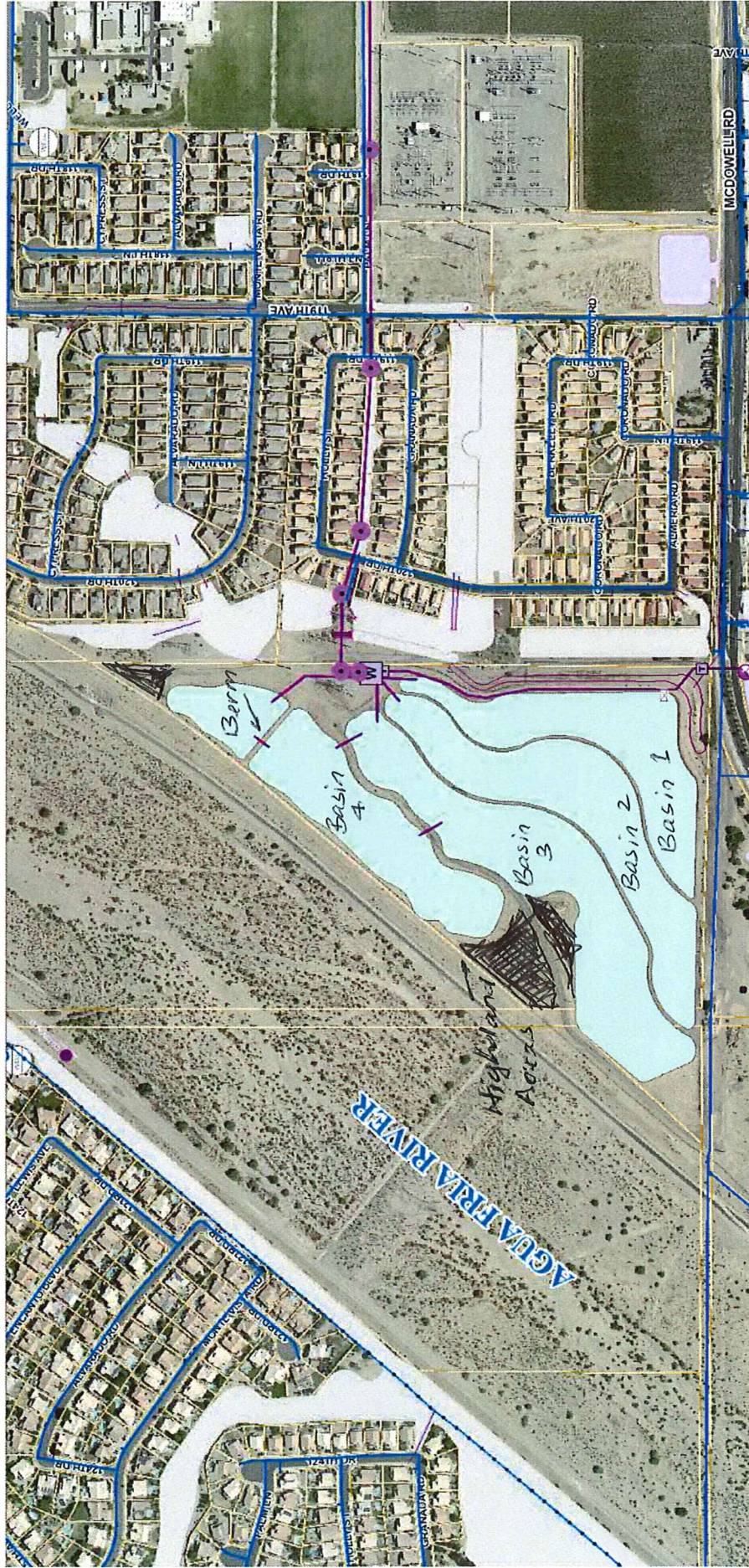
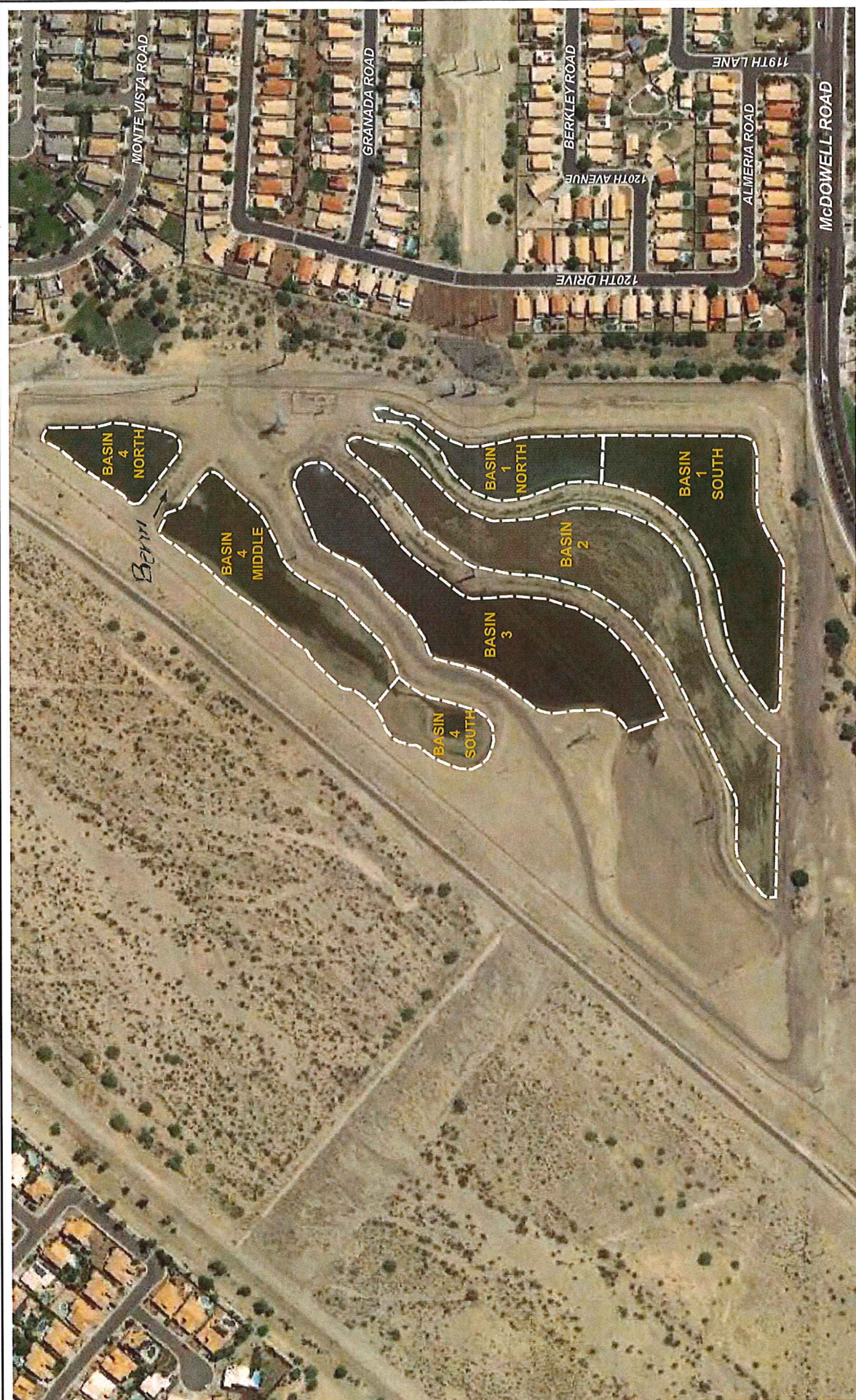


EXHIBIT 1: PROJECT SITE ; 121100 McDowell Road, Avondale, AZ





Source: NAVTEQ, 08/28/18.



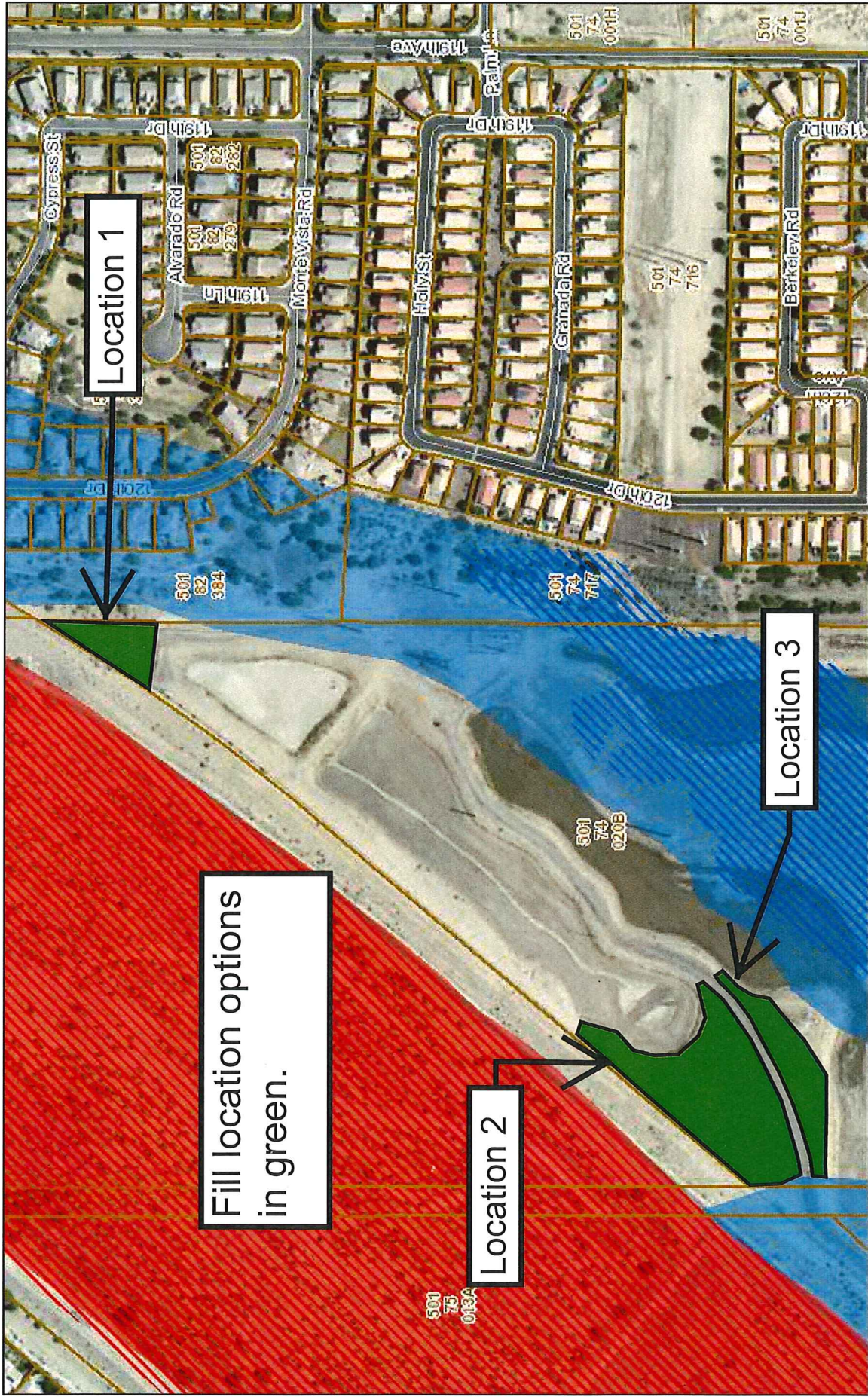
NOTE: DIMENSIONS, DIRECTIONS AND LOCATIONS ARE APPROXIMATE.

*EXHIBIT 2 - Basins Identification*

**SEDIMENT REMOVAL BOUNDARIES**  
 McDOWELL RECHARGE BASINS SEDIMENT EVALUATION  
 AVONDALE, ARIZONA



# Floodplain Viewer



Fill location options in green.

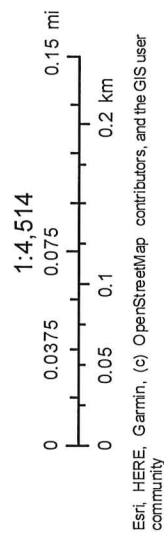
Location 2

Location 3: Fill Locations

Location 1

6/12/2019 11:02:22 AM

## EXHIBIT 3: FILL LOCATIONS



- Elevation Certificate
- Parcel
- Floodplain (Pending FEMA Approval)
- Floodplain (FEMA Effective)
- 100-Year Flood Zone
- 100-Year Flood Zone
- Highway
- Interstate Highway
- State/US/Other Highway
- Interchange/Ramp
- Arterial
- Local
- Maricopa County

Esri, HERE, Garmin, (c) OpenStreetMap contributors, and the GIS user community