

Date: January 18, 2017

Requisition No.: 147218

**PURCHASING DEPARTMENT
101 EAST 11TH STREET
CITY HALL
SUITE G13
CHATTANOOGA, TENNESSEE
37402**

Request for Bid (RFB) for the City of Chattanooga, Tennessee

*Proposals will be received at 101 East 11th Street, Suite G13,
Chattanooga, TN 37402 until 2:00 P.M., EST. on February 1, 2017*

Requisition / Bid No.: R147218 / 304557

Ordering Dept.: Fleet Management

Buyer & E-mail: Mark McKeel mmckeel@chattanooga.gov

Items Being Purchased: Bulk Fuel Trucks

*****REQUEST FOR BIDS MUST BE RECEIVED*****

2:00 P.M., EST on February 1, 2017

*****PRE-BID CONFERENCE WILL BE CONDUCTED*****

10:00 A.M., EST on January 25, 2017

The City of Chattanooga reserves the right to reject any and/or all proposals, waive any informalities in the proposals received, and to accept any proposal which in its opinion may be for the best interest of the City.

The City of Chattanooga will be non-discriminatory in the purchase of all goods and services on the basis of race, color or national origin.

The City's Standard Terms and Conditions may be found on website:

<http://www.chattanooga.gov/purchasing/standard-terms-and-conditions>

Note: ALL BIDS MUST BE SIGNED

All proposals received are subject to the terms and conditions contained herein and as listed in the above referenced website. The undersigned Offeror acknowledges having received, reviewed, and agrees to be bound to these terms and conditions, unless specific written exceptions are otherwise stated.

PLEASE PROVIDE THE FOLLOWING INFORMATION:

Company Name: _____

Mailing Address: _____

City & Zip Code: _____

Phone/Toll Free No.: _____

Fax No.: _____

E-Mail Address: _____

Contact Person: _____

Company Title: _____

Signature: _____

BID SOLICITATION



City of Chattanooga
101 East 11th Street, Suite G13
Chattanooga, TN 37402

BID OPENING DATE AND TIME:

01-FEB-17 at 2:00 PM

BID NUMBER: 304557

SEALED BIDS

Mail or submit two (2) signed copies of bid form to this office in the enclosed envelope. Retain one copy for your file.

BUYER:

PHONE #: (423) 643-7230

DELIVERY REQUIRED:

V
E
N
D
O
R

RFQ

M
A
I
L
T
O

City of Chattanooga
101 East 11th Street, Suite G13
Chattanooga, TN 37402

Item	Class-Item	Quantity	Unit	Unit Price	Total
Requisition / Bid No.: 147218 / 304557 Ordering Dept.: Fleet Management Buyer: Mark McKeel Phone No.: 423-643-7236					
Items Being Purchased: Bulk Fuel Truck; Chassis (1) & Body (1), 3800 Gallons					
ATTACHMENTS: Specifications (15 pages), Affirmative Action Plan (2 pages), Iran Divestment Act Disclosure (1 page)					
This Shall Be A Twelve (12) Month Blanket Contract To Supply Fleet Management with One (1) Bulk Fuel Truck in Year 1 and One (1) more Bulk Fuel Truck in Year 2 or Year 3, Depending on Budget.					
The Contract Term May Be Renewed For An Additional Two (2) Twelve (12) Month Terms Under The Same Terms And Conditions By Mutual Agreement. The City Of Chattanooga And The Contractor May Bilaterally Extend The Contract By Providing Written Confirmation Of Agreement By Both Parties At Least 30 Days Prior To The Contract's Current Expiration Date Into Any Successive Term As Provided Herein.					
**** Vendor Shall Hold Prices Firm for First (1st) Year of Contract ****					
Price Escalation Clause: If as a result of a general change in prices or discounts, the Contractor has changed prices to all of its customers, the price under this contract may be adjusted accordingly. Contractor may be requested to show proof of alleged price changes prior to approval of any price adjustments.					
QUANTITIES ARE ESTIMATES ONLY THE CITY OF CHATTANOOGA SHALL GUARANTEE NO MINIMUM OR MAXIMUM AMOUNT PURCHASED DURING THE LIFETIME OF THE CONTRACT.					
*** BID MUST BE RECEIVED NO LATER THAN *** *** 2:00 PM EST ON <February 1, 2017> ***					
City of Chattanooga (COC) Terms and Conditions posted on Website http://www.chattanooga.gov/purchasing/standard-terms-and-conditions					
If you can't download call buyer for a copy.					
NOTE: ALL BIDS MUST BE SIGNED All bids received are subject to the terms and conditions contained herein and as listed in the above referenced website. The undersigned Bidder acknowledges having received, reviewed, and agrees to be bound to these terms and conditions, unless specific written exceptions are otherwise stated.					
Any manufacturer's names, trade names, brand names, or catalog numbers used in the specifications are for the purpose of describing and establishing general quality levels. Such references are not intended to be restrictive. Bids will be considered for any brand which meets or exceeds the quality of the specifications listed for any item.					
The City of Chattanooga reserves the right to reject any and/or all bids, waive any					

BID SOLICITATION



City of Chattanooga
101 East 11th Street, Suite G13
Chattanooga, TN 37402

BID OPENING DATE AND TIME:

01-FEB-17 at 2:00 PM

BID NUMBER: 304557

SEALED BIDS

Mail or submit two (2) signed copies of bid form to this office in the enclosed envelope. Retain one copy for your file.

BUYER:

PHONE #: (423) 643-7230

DELIVERY REQUIRED:

**V
E
N
D
O
R**

RFQ

**M
A
I
L
T
O**

City of Chattanooga
 101 East 11th Street, Suite G13
 Chattanooga, TN 37402

Item	Class-Item	Quantity	Unit	Unit Price	Total
<p>informalities in the bids received, and to accept any bid which in its opinion may be for the best interest of the city.</p> <p>The City of Chattanooga will be non-discriminatory in the purchase of all goods and services on the basis of race, color, or national origin.</p> <p>**** NOTE **** PLEASE PROVIDE US WITH THE FOLLOWING INFORMATION:</p> <p>Company Name: _____</p> <p>Address: _____</p> <p>Phone/Toll-Free No.: _____</p> <p>Fax No.: _____</p> <p>eMail Address: _____</p> <p>Contact Person's Name: _____</p> <p>Estimated Delivery: _____</p> <p>Minority-Owned Business _____ Small Business _____ Veteran _____</p> <p>Minority Woman-Owned Business _____ Disabled Veteran _____</p> <p>Woman-Owned Business _____</p> <p>**** ALL ITEMS MUST BE QUOTED F.O.B. DESTINATION ****</p>					

NOTE: ALL BIDS RECEIVED ARE SUBJECT TO THE TERMS AND CONDITIONS

The City is Exempt from all Federal and State Tax.
 Bids will be received at the above mentioned address.

TERMS OF PAYMENT: _____

TELEPHONE NUMBER: _____

ALL BIDS MUST BE SIGNED – The undersigned offers the above quoted prices under the conditions contained herein.

COMPANY: _____

SIGNATURE: _____

NAME AND TITLE: _____

SEALED BIDS

BID OPENING DATE AND TIME:

BID NUMBER: 304557

BUYER:

PHONE #: (423) 643-7230

VENDOR

MAIL TO

Item	Class-Item	Quantity	Unit	Unit Price	Total
1	Bid-3800 GAL Fuel Truck for bulk fuel (per Specifications)	1	Each	_____	_____

COMPANY: _____

TERMS OF PAYMENT: _____

SIGNATURE: _____

TELEPHONE NUMBER: _____

NAME AND TITLE: _____

City of Chattanooga
General Services/Fleet Division
SPECIFICATION
Bulk Fuel Truck
Truck Chassis and Service Body

INTRODUCTION; Required

These specifications describe the vehicle and accessories to be purchased by the City of Chattanooga General Services Department, Fleet Division. These specifications consist of three parts: (1) Required Features – these requirements must be met without exceptions for a bid to be considered acceptable, (2) Preferred Features – attributes/performance that the City wants, however exceptions to Preferred Features are allowed with explanation (The more Preferred Features that are met by a bid, the better the bid.), and (3) Options – additional features/conditions that are optional (i.e., may or may not be offered by Suppliers and may or may not be purchased by the City); Options will be priced as separate line items.

The attached specifications describe the requirements for one (1) Bulk Fuel truck and accessories to be purchased by the General Services, Fleet Division. The specifications are intended to be flexible enough for all major manufacturers to comply. The uses of names or part numbers are used for cross referencing to another brand name to be equivalent or greater to the specifications (Or EQUAL).

GENERAL: All equipment furnished shall be new, unused and of the manufacturer's current production design. Bidder must accurately complete this specification sheet and include it as a portion of the bid. Failure to accurately complete and submit this form shall be grounds for rejection. Bidder shall complete every space, in the specification's bidder's proposal column, with a check mark to indicate if the item being bid is exactly as specified. If not, the "NO" column must be checked and a detailed description of the deviation shall be listed on a separate sheet. The vehicle furnished in compliance with this specification shall be a new 2016 model, or the latest model in current production (as offered to commercial trade), and shall be of good quality as to workmanship. All items listed in the manufacturer's literature as standard equipment shall be furnished. The equipment shall conform to ANSI Safety Standard Z245.1-1999 or Latest ANSI Safety Standard.

1. The entire vehicle/Apparatus/Equipment is to conform to D.O.T., FMVSS, ANSI, and OSHA and to the requirements of all other applicable regulatory agencies.
2. Parts not specifically mentioned that are necessary to furnish a complete chassis or body/apparatus must have been produced using the automotive industries' best manufacturing practices. This pertains to design, quality of materials and workmanship.
3. Using the attached specifications, bidders must indicate either "yes" or "no" to the right of all line specifications. Exceptions or "no" responses are to be listed and FULLY Explained on a separate page. Failure to complete the spreadsheet or failure to properly document exceptions to the specifications may result in the bid being declared "non-conforming".
4. Loose and miscellaneous equipment is to be provided only as required by D.O.T/FMVSSA and specifications.
5. Each bid is to be accompanied by a set of manufacturer's and as applicable, vendor's specifications. These are to consist of a detailed description of the proposed vehicle/apparatus and equipment. The specifications are to indicate size, type, model and make of all component parts and equipment. A CAD drawing of the proposed vehicle indicating wheelbase, Cab to axle and Cab to end of frame measurements is desired. All weights and horsepower/torque to transmission ratios to axle ratios shall be approved by engineering per vehicle manufacturer to include all detachable components and operations.

All vehicles will be delivered with factory service manuals, wiring diagrams and component locators for cab, chassis & bodies installed on vehicle. CD's or DVD will be accepted.

All warranties will be listed with specific details as to time, including any and all exclusions. No warranties can be Terminated or canceled for any reason during the warranty coverage as stated in bid where specified. No travel or drive time for repairs will be paid while under any manufacturer's warranty.

All power train components, assemblies, subassemblies, component parts and so on, will be designed and constructed with due consideration to the nature and distribution of the load to be sustained and to the general character of the service to which the vehicle is designed for and to be subjected to when placed in service. All parts of the vehicle will be strong enough to withstand the general service under full load. The vehicle will be so designed that the various parts are readily accessible for lubrication, inspection, adjustment and repair and complete unit engineering approved.

All vehicles will be supplied with a line sheet to include as built and current part numbers of any and all components installed on vehicle.

The specified vehicle will be capable of reaching and maintaining a minimum speed of 20 MPH on any grade up to and including 25% or 15 degree grade. The vehicle will be capable of attaining a true speed of 35 MPH in 25 seconds and programmed not to exceed 65 MPH.

All warranty registrations will be completed by bidder and copies provided upon delivery, all warranties will begin on any and all components on the in service date or delivery date if no special training is needed to begin operating vehicle.

Any special software or hardware needed to perform diagnostics on any computer (Engine, Transmission) mounted on cab, chassis and body shall be provided by bidder.

WARRANTY AND SERVICE CAPABILITIES: Manufacturer's standard guarantee against defective parts and engineering shall apply in accordance with the statement of the warranty policy. All Bidders' shall maintain a full service maintenance facility and fully stocked parts facility capable of full hydraulic, electrical and body repair. This shop shall be manned by factory-trained, qualified service personnel. Bidder shall state location. A 25 mile radius of Chattanooga is preferred. Also, provide documentation of service facility. Repeated failure by the manufacturer's authorized dealers to render warranty service when proper shall subject the manufacturer's line to suspension from the approved products list until satisfactory evidence of correction is provided.

WARRANTY

1. Warranty period shall be for Three (3) years on the service body and chassis with the exceptions of listed wear items listed by the seller.
2. Warranty shall start on in service date.
3. All warranty registrations shall be completed by the vendor and copies provided upon delivery.
4. Warranty period to be "bumper to bumper" for three (3) years on the chassis, engine, transmission and drive train, excluding wear items. ALL wear items shall be listed separately for Cab and chassis and Body.
5. Bidder shall include copy of warranty terms and conditions and a list of any exceptions from the warranty as well as wear items. Warranty documents will not be accepted.
6. Provide optional/supplemental bid for 5 year warranty.

1. RADIO REQUIREMENTS IN CAB

1. 20 amp circuit power and ground shall be provided with an additional 4 amp ignition feed.
2. RG58 Antenna cable with 800 MHz NMO mount and mini UHF connector.
3. Optional Bid for same specifications with only 3 year warranties.
4. *Total lifecycle cost will be used as part of the analysis of bids for all vehicles and equipment purchased by the City of Chattanooga/ Fleet Management Division. This includes the daily cost of vehicle downtime.*
5. *For any and all Vehicles and/or Equipment purchased by the City of Chattanooga Fleet Management; a re-imbursement of daily cost for vehicles under warranty and out of service for a period of greater than 10 work days. No exceptions. This means if you're not serious about the support of vehicles you sell, you need to consider this factor as a cost item to you in this bid.*

TANK SPECIFICATIONS

SIZE:	3800 Gallons plus normal overage.
MODEL:	AL76D
CERTIFICATION:	Tank is manufactured to DOT 406 specifications under ASME (American Society of Mechanical Engineers) U Stamp #27,488 and Department of Transportation Registration #CT-6342. A DOT 406 Certificate of Compliance will be issued by Oilmen's Truck Tanks.
PRODUCT:	Petroleum Products. (As is always the case, it is the responsibility of the operator to load tank so as to comply with Federal and State Highway weight limits.)
COMPARTMENTS:	(2) 3000-800 Gallons or quantities of your choice. (NOTE: Some compartment configurations may require extra baffles.)
DESIGNED FOR:	A cab and chassis with 166" cab to axle dimensions and 20,000# minimum rated front axle and 40,000# minimum rated rear axle. (Note: Tires, springs, axle and frame must meet these minimums.
MATERIALS:	Bright polished aluminum. Tank is constructed with a continuously welded 3/8" extruded angle subframe, 3/8" extruded aluminum cross members and 3/8" outriggers with pads at <u>every</u> head and baffle location. Also a nose pad covering the seam between the front head and the bottom is included for extra strength. This type construction is used in

the finest of trailers and results in long, trouble free life even in off the road conditions.

The tank bottom is 1/4" (.250") aluminum with side shell of 3/16" (.188") aluminum. Our entire shell and heads are of bright polished finish. (This polished finish is not standard on some competitive brands.)

MOUNTING SYSTEM:

Tank is anchored to the truck chassis by a series of specially designed two-piece tie down assemblies. The two halves of the tie down are locked together in such a way that both side to side and front to back movement are prevented, while securing the tank to the chassis.

A maintenance-free neoprene strip cushions and insulates the tank from the truck chassis.

HEADS:

Tank is semi-oval in shape with deep dished heads and baffles for superior surge control. All heads and baffles are flanged for greater strength. Head patterns of our own special selection result in low center of gravity. All heads and baffles are formed to precise dimensions resulting in a shell of extraordinary smoothness and strength.

BULKHEADS:

Double bulkheads with vented drain space between compartments allow for the safe transportation of mixed product loads.

BAFFLES:

If the compartment is large enough for baffles to be required under D.O.T. 406 regulations, then these are included as standard equipment.

There are (3) transverse baffles in the 3000 gallon compartment.

Additional transverse baffles and longitudinal baffles are available as options.

OVERTURN PROTECTION:

The overturn protection to D.O.T. 406 specifications is of 3/16" (.188") aluminum and is an integral part of tank so as to prevent any leaking from top.

Both overturn rails are the closed inverted "U" type with the curbside rail being air tight and used for the vapor recovery line.

MANHOLES:	Premium grade Betts 16" round, lift-out type with 10" quick opening lockable fills and D.O.T. 406 approved venting. Unless requested otherwise, the manholes are offset to the curbside (right) for wide walkway down the roadside (left) of the tank.
MODEL AL76D:	<p>Large, completely enclosed rear compartment will accommodate either dual or single meter and reel setups. Rear equipment compartment has large raise up canopy door with drip molding to protect driver when it is raining, pneumatic lifters and positive closing pin latches with locking "D" handles that are recessed. Entire rear compartment is aluminum for ease of maintenance.</p> <p>The rear equipment box has reinforced aluminum floor and is completely enclosed for dust-free operation with double step down floor, which incorporates a built in drain pan and drain valve.</p>
SIDE ACCESS DOORS:	Two side doors, one each side, in rear equipment cabinet allows access to equipment and/or extra storage with locking "D" handles.
TOP WALKWAY:	Each tank is provided with wide walkway area between the overturn rails with expanded aluminum providing a non-skid surface for safe footing.
SIDE WALKWAY:	Aluminum 5" grip strut provided on each side entire length of tank.
MARKER RODS AND DISCS:	A heavy duty marker rod and aluminum disc, approved by all states, is provided in each compartment. For maximum protection, the markers should be set and sealed by a State Weights and Measures Official of the state where vehicle operates. Most states provide this service at no charge.
DRAIN TUBES:	(2) Drain tubes are provided from the flashing area at the front and rear of the tank to assure that no water accumulates on top of the tank.
BUMPER:	A heavy-duty bumper per D.O.T. 406 specifications protects rear of tank.
CABINETS:	65" Specialty cabinet on driver side has reinforced double doors. Doors have positive close pin latches with locking "D" handles that are recessed. Doors have continuous stainless steel hinges and hold open springs.

PIPING:	Piping includes 3" bolted sumps, over-sized 3" air emergency valves and 2" pipe lines. This larger capacity results in much faster discharge rates. Pipelines on this model are a full 40% thicker than those found on most competitive tanks. Lines are run directly to the pump.
EMERGENCY VALVE:	All emergency valves are air operated. Air operated fire trip is provided on front driver's side.
FENDERS:	Bolt-on aluminum trim tandem axle fenders are provided.
LADDERS:	Aluminum platform type ladder is provided at the rear, curb side, with non-skid steps and grip strut platform and grab rails for safe access to top of unit. Ladder is bolt on for ease of repair.
WIRING/LIGHTING:	All wiring in tubing is vapor proof. Lighting complies with ICC/D.O.T. regulations and includes: (2) 5" stop and tail, (2) 5" clearance and directional, (2) back-up lights and (1) 3-lamp cluster. There are four sides riding lights and all necessary reflectors are included. All lights are Betts LED type with snap seal lenses.
SYSTEM IDENTIFICATION:	Pipe lines, switch panels and airline protection are color coordinated to facilitate system identification and troubleshooting.
PAINTING:	Painting of steel components including sanding, applying an additional epoxy prime coat, and spraying with (2) finish coats. Paint job to be (1) color with Oilmen's Truck Tanks to furnish PPG Delfleet paint, a premium grade polyurethane paint.
MATERIALS AND CONSTRUCTION:	All materials and construction methods meet or exceed Department of Transportation 406 regulations. A Certificate of Compliance will be issued with tank.
LETTERING/DECALING:	Custom decaling is available as an <u>option</u> .

Tank, all labor to mount, and make electrical connections is included.

BOTTOM LOADING, VAPOR RECOVERY AND BRAKE LOCK SYSTEM

BOTTOM LOADING ADAPTER:	(2)	4" EBW openable loader with handle and sight glass.
GRAVITY DROP ADAPTER:	(2)	4" X 3" with Keeper Chain
DUST CAP:	(2)	3" with Restraining Cable
INTERLOCK VALVE:	(2)	Air operated valve mounted on each bottom loading adapter.
DEFLECTORS:	(2)	OEC type which controls splash above sumps.
MANHOLE COVERS:	(2)	Betts 16" with 10" offset fills, vent and probe openings.
STATIC WIRES:	(2)	Stainless steel braided cable from cover to splash deflector.
POSITIVE VENTING:	(2)	OPW/Civacon 3-1/2" Air vent with aluminum hood.
VAPOR RECOVERY LINE:	(1)	Air tight line full length of tank.
RECOVERY ADAPTER:	(1)	4" Vapor recovery adapter with built in poppet check valve.
DUST CAP:	(1)	4" Vapor Recovery Dust Cap
BRAKE INTERLOCK VALVE:	(1)	Air valve with limit switch (required for vapor recovery).
CONTROL VALVE:	(1)	Schrader Air Valve
SECONDARY VENTS:	(1)	4" Betts Inbreathing
	(1)	4" Betts Outbreathing
GROUNDING STUDS:	(1)	Set of (2) Brass
CIVACON SYSTEM:	(1)	Rom-Link System - Contains Civacon Optic Probes, Civacon Rom II On-Board Control Monitor for the versatility of loading at terminals equipped with optic, thermistor or fleet control units.
SOCKET:	(1)	Civacon 4401 API for Thermistor

SOCKET:	(1)	Civacon 4100 API for Optic
GROUNDING BOLT:	(1)	Civacon GS1000 SAF-T Ground Bolt
MISCELLANEOUS:	(1)	Set elbows, air lines, fittings, support brackets and ties.

All material, labor to install system, test for vapor tightness and check out equipment. Included will be a Wet Test Certification and a 60 Gallon Certification.

PUMPING EQUIPMENT

(2) Sets of equipment to include:

PUMP:	(2)	Blackmer TXD2.5" with relief valve.
STRAINER:	(2)	2" Flanged type.
PUMP BRACKET:	(1)	Heavy duty saddle type.
METER:	(2)	2" Liquid Controls with air eliminator, strainer and zero start register with cumulating totalizer.
BACK PRESSURE VALVE:	(2)	2"
AUTO STOP:	(2)	2" Double stage valve with preset counter.
TICKET PRINTER:	(2)	Zero start type.
SPRAY CONTAINER:	(2)	Two gallon capacity for air eliminator with air vent and drain valve.
METER MOUNT PLATE:	(2)	1/4" Aluminum for extra strength.
HOSE REEL:	(2)	1 1/2" Hannay electric rewind with vapor proof motor and solenoid switch. Floor mounted reels facing rear.
BATTERY CABLE:	(2)	Industrial grade for electric hose reel.
CIRCUIT BREAKER:	(1)	70 Amp breaker with 9 amp fuse for protection of reel switch and motor.
FUEL HOSE:	(2)	150' x 1-3/8" Goodyear Redwing with Scovill fittings.
JUMPER HOSE:	(2)	Special highly flexible 2" Goodyear.

JUMPER HOSE SUPPORT:	(1)	Two-bar support rack for jumper hoses is provided.
COUPLER:	(2)	2" OPW female dry break coupler.
NOZZLE:	(2)	1-1/2" Husky automatic with hose swivel.
POWER TAKE OFF:	(2)	High speed, double gear air shift with air controls at rear and safety light located in cab.
BRAKE LOCK:	(2)	Automatic PTO release type.
DRIVE SHAFT:	(2)	High torque drive line with spline slip joint and (3) grease fittings.
PLACARDS:	(4)	Flip Type Included
PLACARD HOLDER:	(3)	Included
FIRE EXT.:	(1)	10# with bracket included.
TRIANGLE KIT:	(1)	Included
BUCKET:	(1)	5-Gallon DOT approved heavy duty metal bucket.
SPILL PADS:	(1)	Case emergency absorbent pads.
NOZZLE HOLDER:	(2)	Included
DUMMY ADAPTERS:	(2)	Included
METER LIGHT:	(1)	Included
WORK LIGHT:	(3)	(2) Facing rear and (1) in bucket box.
STROBE LIGHT:	(1)	12-Volt LED 21 pattern programmable included.
TANK GAUGE:	(1)	SeeLevel 2-Compartment digital monitor system. (See Photos)
BACKUP CAMERA:	(1)	Backup camera system with 7" color screen.
TICKET BOX:	(1)	Weatherproof ticket box mounted in rear bucket box.
TANK HEIGHT DECAL:	(1)	Decal indicating height of vehicle.
MANUALS:	(1)	Operations and equipment manuals will be provided.

- MUD FLAPS: (1) Set D.O.T. approved anti-spray.
- PARTS LIST: (1) Detailed parts list of each major component of pumping system including serial numbers and model numbers of pumps, meters, and reels.

All equipment, labor to mount, check out system and calibrate meter included.

DEF 0812C – 12VDC

- TANK: 150-Gallon stainless steel round 27" diameter x 38.5" long saddle mount tank including: factory mounting brackets with polished straps, stainless manway, 2" poly pressure/vacuum vent, 2" fill port with MicroMatic RSV fill coupler, 1" bottom outlet with stainless ball valve, and stainless float sending unit with display gauge.
- PUMP: 3/4" Tuthill stainless steel rotary vane pump for 8 GPM with a 1/2 HP 12VDC TEFC continuous duty motor, internal bypass, and thermal overload protection. *At 12V DC the full load current is rated at 45 amps.*
- FILTER: 1CFH20 Westco stainless steel cartridge filter housing with 1-micron absolute filter elements.
- REEL: 1" Hannay 12V electric rewind aluminum reel with stainless steel wetted components. Reel will be inverted in rear with 4-way roller rack.
- REEL HOSE: 100' x 1" Flextral PE75 hose with stainless pipe fittings.
- NOZZLE: (1) OPW 21Gu with Mis-Filling Prevention spout and hose swivel.
- COMPLIANCE: All wetted materials meet ISO 22241-3 specifications.

MUST HAVE DEALER WITHIN 25 MILES OF THE CITY OF CHATTANOOGA

EXCEPTIONS AND DEVIATIONS

Bidder shall fully describe every variance, exception and/or deviation. Additional sheets may be used if required.

Other options:

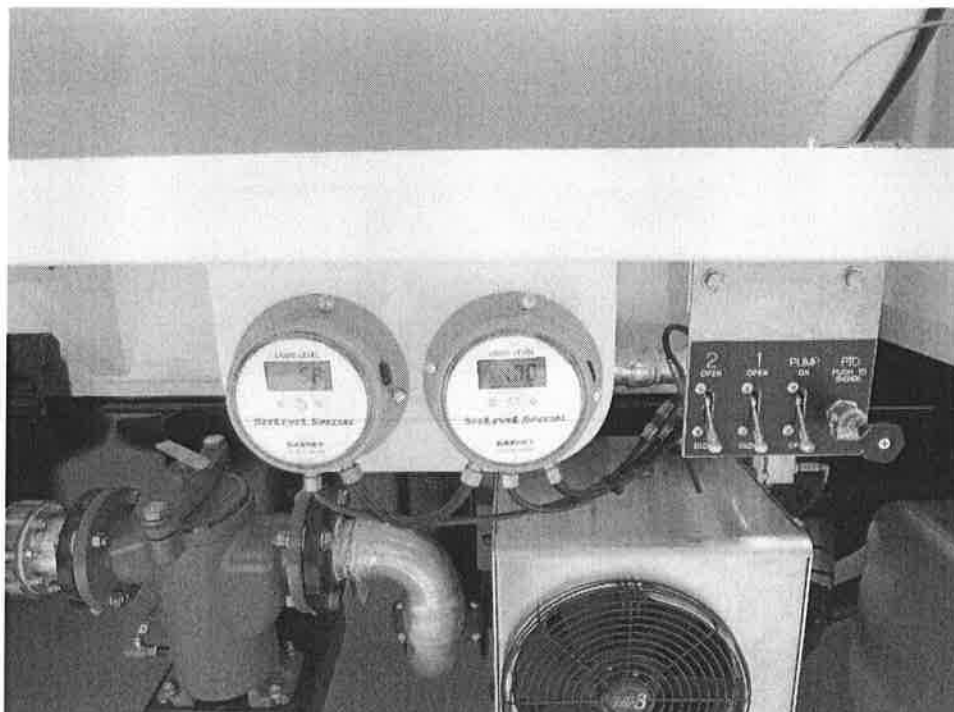
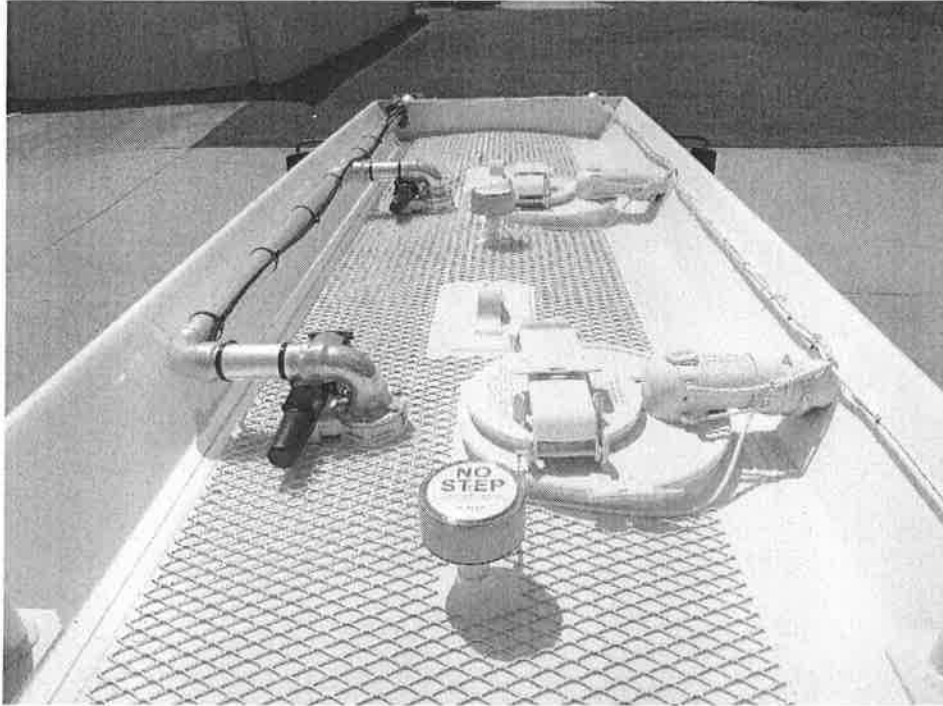
- Guaranteed quote for trade in values at 3/5 year intervals: _____

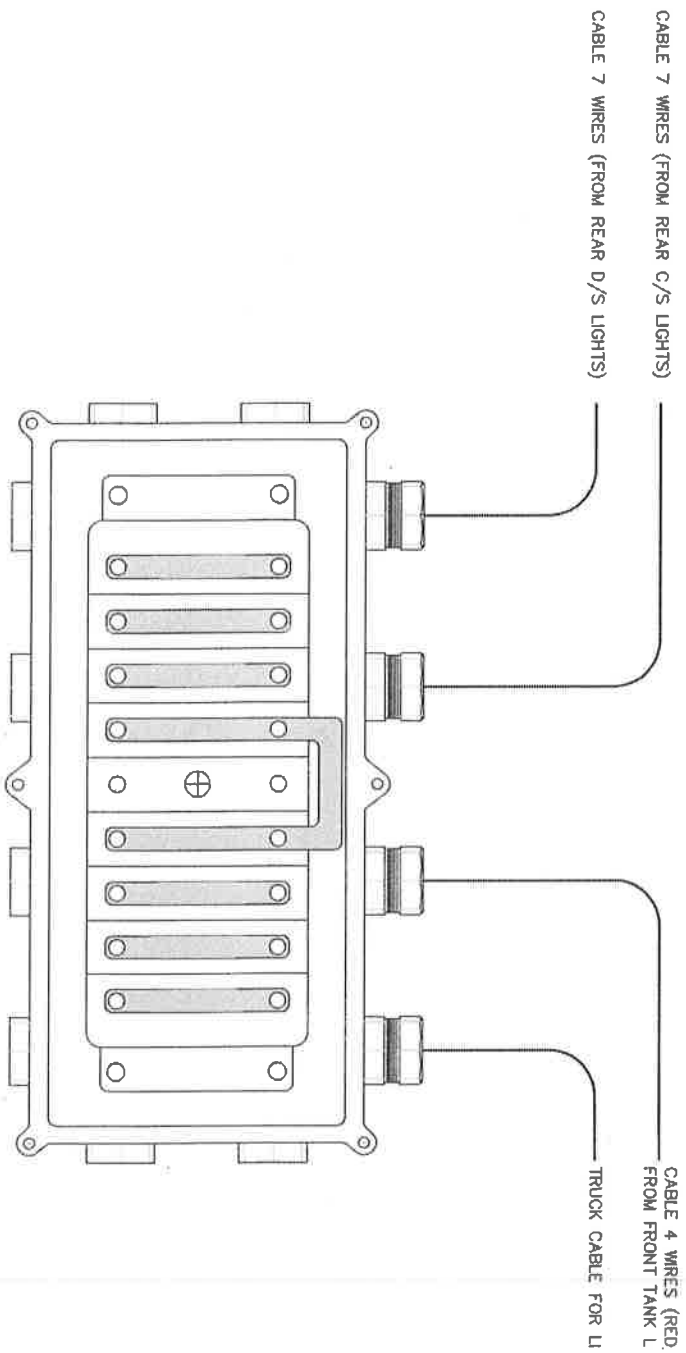
Optional/supplemental bid for 5 year warranty:

Agent's Name: _____

Phone Number: _____

SEELVEGAUGE SYSTEM





Tolérances/out indications contraires				Créé par:	Date:	Titre:
				C. NAHIMANA	2016-05-24	ELECTRICAL LIGHTS BOX
				Vérifié par:	Date:	Sujet:
					2018-	OILMENS
				Design Eng. approuvé par:		
				DORIN BUKOSZKI		
N/A	N/A	N/A	Rev	Date	Description	By
DEC	ANG.	FRAC.				--
Drawing: OILMENS-ELEC LIGHT-01						

Affirmative Action Plan

The City of Chattanooga is an equal opportunity employer and during the performance of this Contract, the Contractor agrees to abide by the equal opportunity goals of the City of Chattanooga as follows:

1. The Contractor will not discriminate against any employee or applicant for employment because of race, color, religion, sex, national origin, or handicap. The Contractor will take affirmative action to ensure that applicants are employed, and the employees are treated during employment without regard to their race, color, religion, sex, national origin, or handicap. Such action shall include, but not be limited to, the following: employment, upgrading, demotion, or transfer, recruitment or recruitment advertising, layoff or termination, rates of pay, or other forms of compensation, and selection for training, including apprenticeship. The Contractor agrees to post in conspicuous places, available to employees and applicants for employment, notices setting forth the provisions of this nondiscrimination clause.
2. The Contractor will, in all solicitations or advertisements for employees placed by or on behalf of the Contractor, state that all qualified applicants will receive consideration for employment without regard to race, color, religion, sex, national origin, or handicap.
3. The Contractor will send to each labor union or representative of workers with which he/she has a collective bargaining agreement or other contract or understanding, a notice advising the said labor union or workers' representatives of the Contractor's commitments under this section, and shall post copies of the notice in conspicuous places available to employees and applicants for employment.
4. In all construction contracts or subcontracts in excess of \$10,000 to be performed for the City of Chattanooga, any contractor and/or subcontractor is further required to file in duplicate within ten (10) days of being notified that it is the lowest responsible bidder, an affirmative action plan with the EEO Director of the City of Chattanooga. This plan shall state the Contractor's goals for minority and women utilization as a percentage of the work force on this project.
5. This Plan or any attachments thereto shall further provide a list of all employees annotated by job function, race, and sex who are expected to be utilized on this project. This plan or attachment thereto shall further describe the methods by which the Contractor or Subcontractor will utilize to make good faith efforts at providing employment opportunities for minorities and women.

During the term of this contract, the Contractor upon request of the City, will make available for inspection by the City of Chattanooga copies of payroll records, personnel documents and similar records or documents that may be used to verify the Contractor's compliance with these Equal Opportunity provisions.

6. The Contractor will include the portion of the sentence immediately preceding paragraph 1 and the provisions of paragraphs 1 through 6 in every subcontract so that such provisions will be requested of each subcontractor. The Contractor agrees to notify the City of Chattanooga of any subcontractor who refuses or fails to comply with these equal opportunity provisions. Any failure or refusal to comply with these provisions the Contractor and/or Subcontractor shall be a breach of this contract.

(Signature of Contractor)

(Title and Name of Construction Company)

(Date)

Chapter No. 817 (HB0261/SB0377). "Iran Divestment Act" enacted.
Vendor Disclosure and Acknowledgement

By submission of this bid, each bidder and each person signing on behalf of any bidder certifies, and in the case of a joint bid each party thereto certifies as to its own organization, under penalty of perjury, that to the best of its knowledge and belief that each bidder is not on the list created pursuant to § 12-12-106.

(SIGNED) _____

(PRINTED NAME) _____

(BUSINESS NAME) _____

(DATE) _____

For further information, please see website:

https://www.tn.gov/assets/entities/generalservices/cpo/attachments/List_of_persons_pursuant_to_Tenn._Code_Ann._12-12-106,_Iran_Divestment_Act-July.pdf