

PATH LAYOUT  
SCALE: 1"=30'

THIS IS NOT A SURVEY, GENERALIZED LOCATION BY GIS TOPO. VARIATION TO THE GENERALIZED LOCATION IS EXPECTED AS PATH WILL BE ROUTED AROUND TREES.



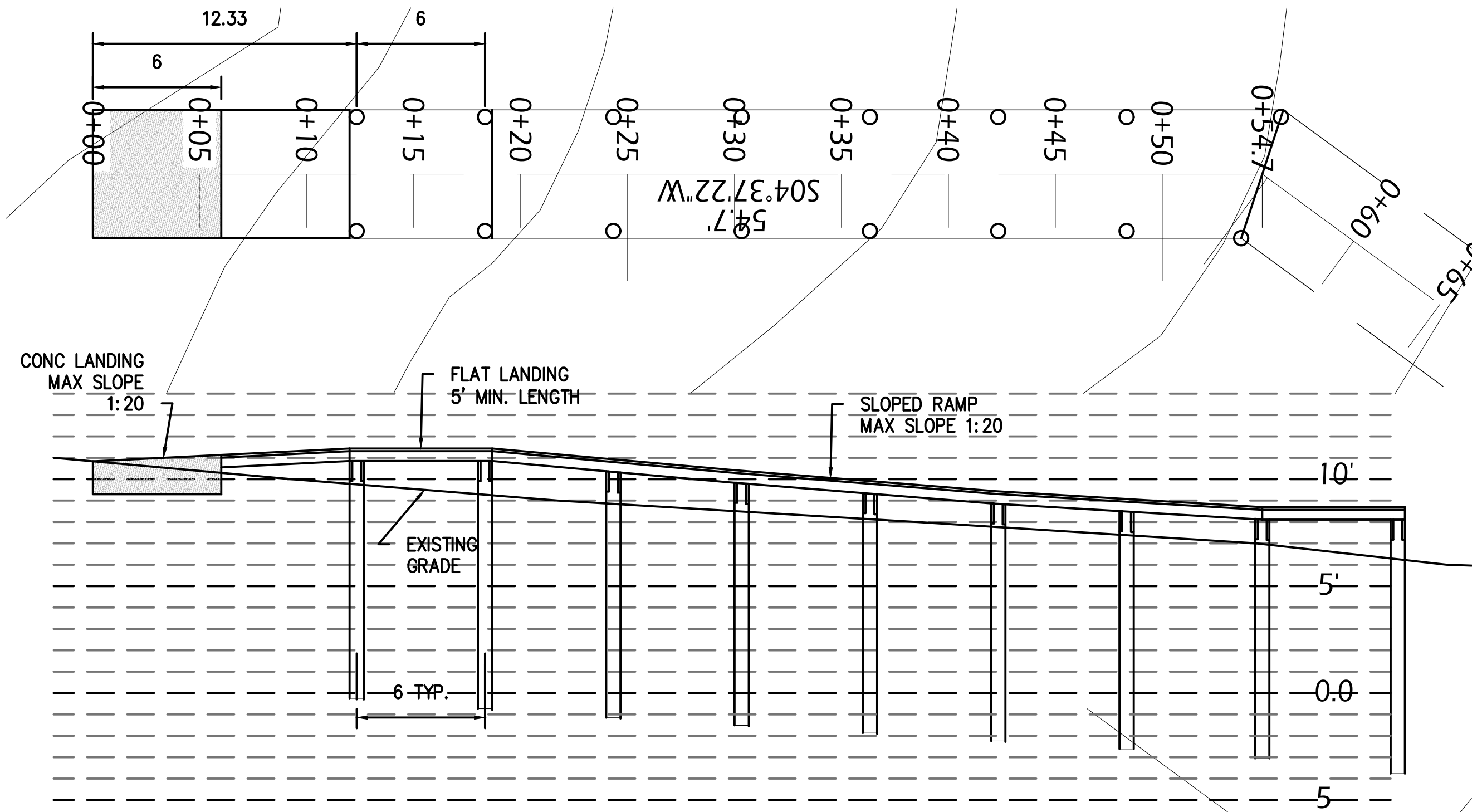
GRAHAM CREEK NATURE PRESERVE  
ACCESSIBLE PATH / BRIDGE

PROJECT 191009      DATE 03-01-2020



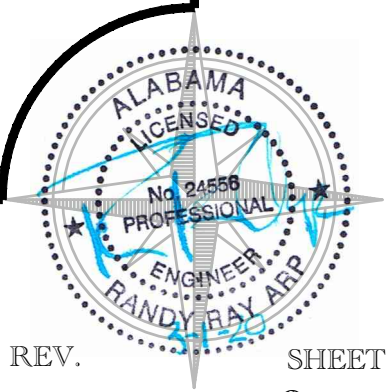
REV. --      SHEET 1 OF 9

L.E. STIFFLER, ENGINEER LLC  
309 W. LAUREL AVE.  
FOLEY AL 36535  
855-943-8501  
251-262-2474 FAX  
randy@lesengr.com



PATH LAYOUT  
SCALE: 1" = 5'

L.E. STIFFLER, ENGINEER LLC  
309 W. LAUREL AVE.  
FOLEY AL 36535  
855-943-8501  
251-262-2474 FAX  
randy@lesengr.com

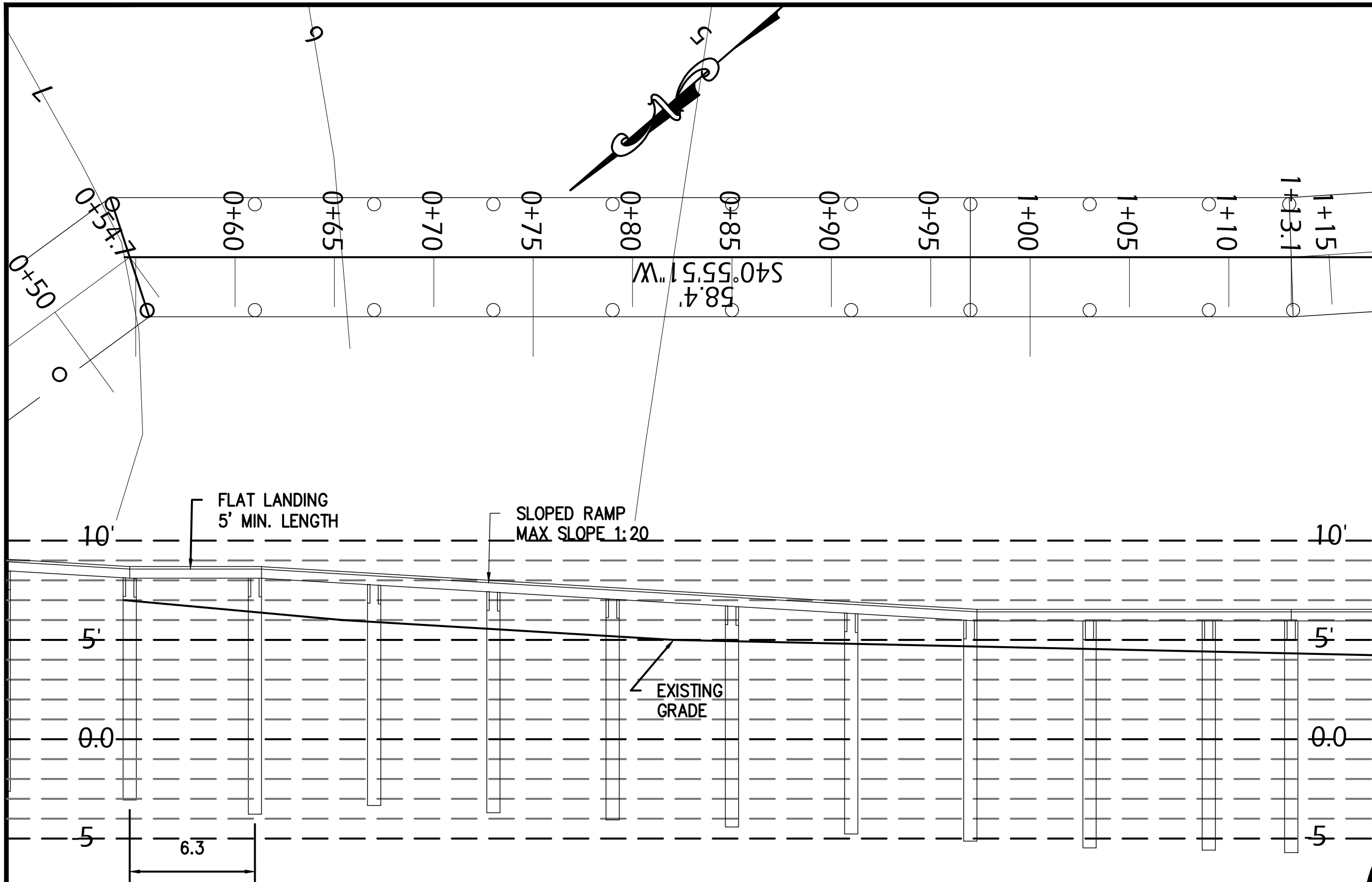


GRAHAM CREEK NATURE PRESERVE  
ACCESSIBLE PATH / BRIDGE

PROJECT 191009 DATE 03-01-2020

REV. --

SHEET 2 OF 9



PATH LAYOUT  
SCALE: 1" = 5'

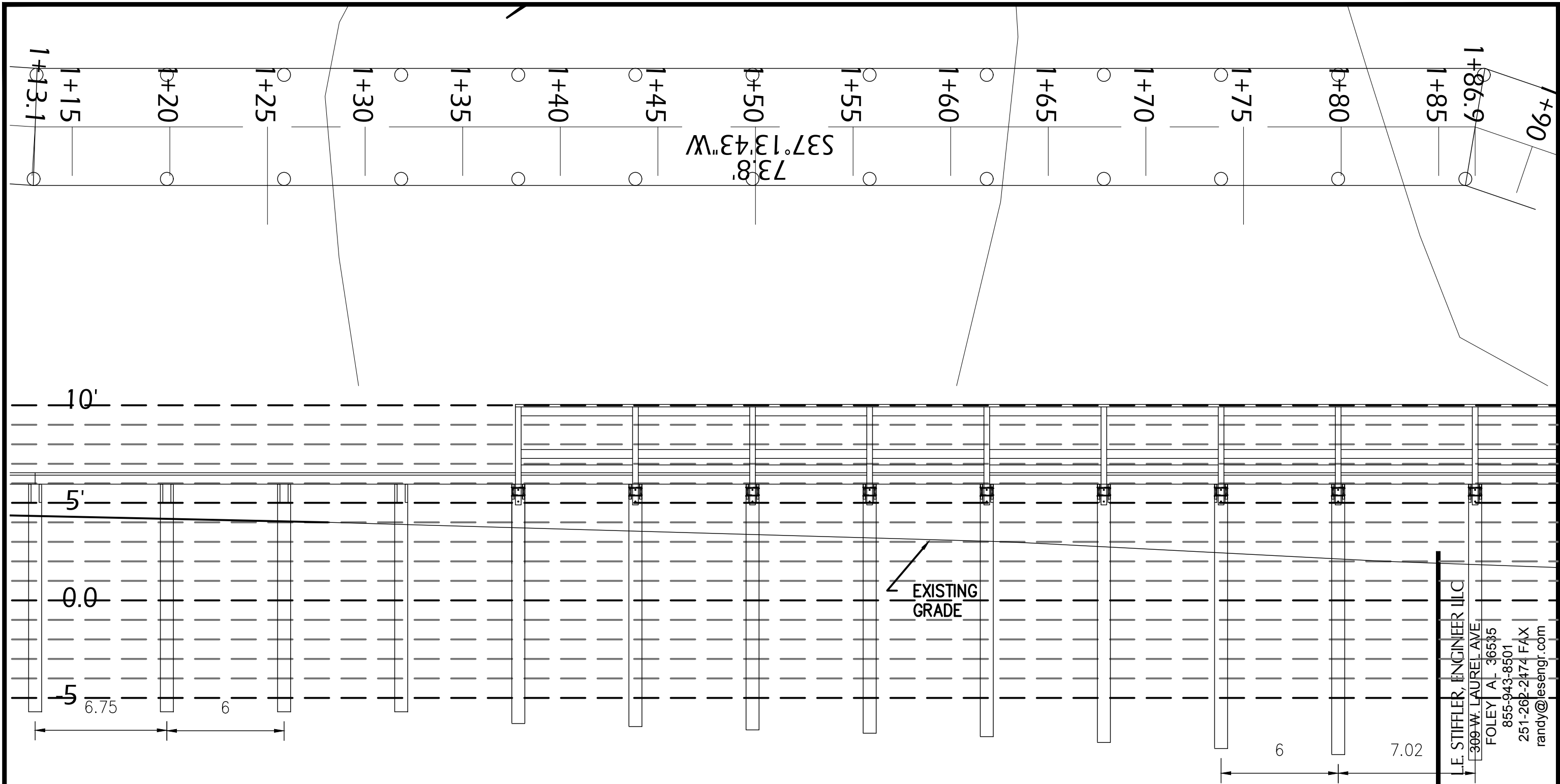


GRAHAM CREEK NATURE PRESERVE  
ACCESSIBLE PATH / BRIDGE

PROJECT	DATE	REV.	SHEET
191009	03-01-2020	--	3 OF 9



L.E. STIFFLER, ENGINEER LLC  
309 W. LAUREL AVE.  
FOLEY AL 36535  
855-943-8501  
251-262-2474 FAX  
randy@lesengr.com

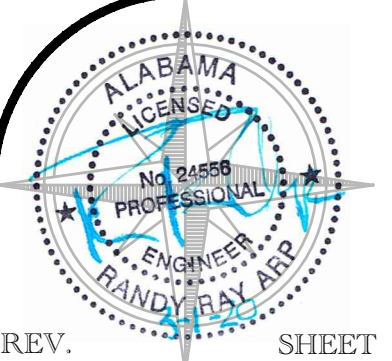


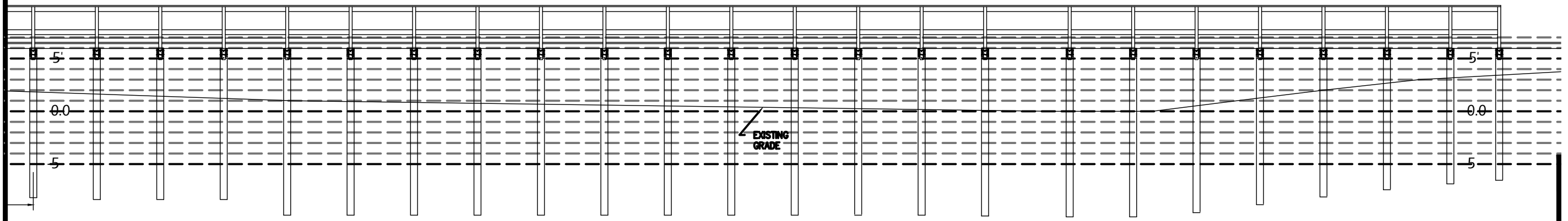
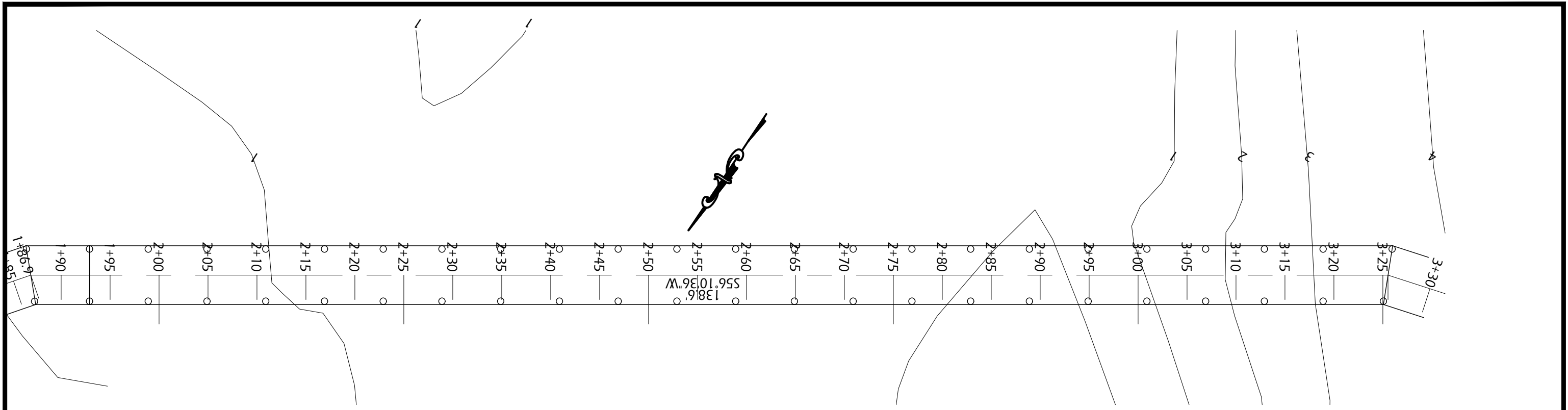
L.E. STIFFLER, ENGINEER LLC  
 309 W. LAUREL AVE  
 FOLEY AL 36535  
 855-943-8501  
 251-262-2474 FAX  
 randy@lesengr.com



GRAHAM CREEK NATURE PRESERVE  
 ACCESSIBLE PATH / BRIDGE

PROJECT	DATE	REV.	SHEET
191009	03-01-2020	--	4 OF 9



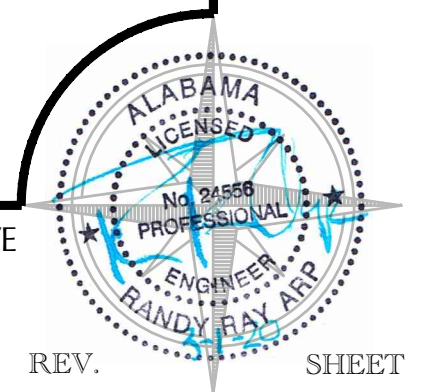


PATH LAYOUT  
SCALE: 1" = 10'



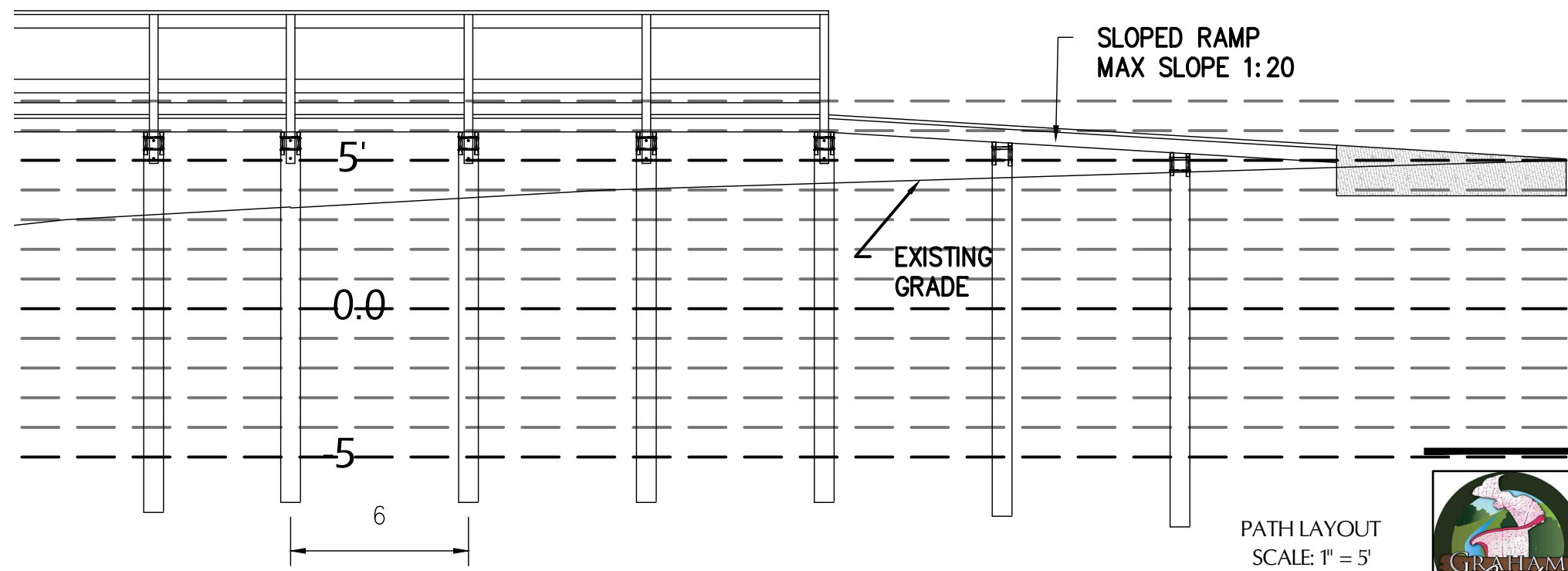
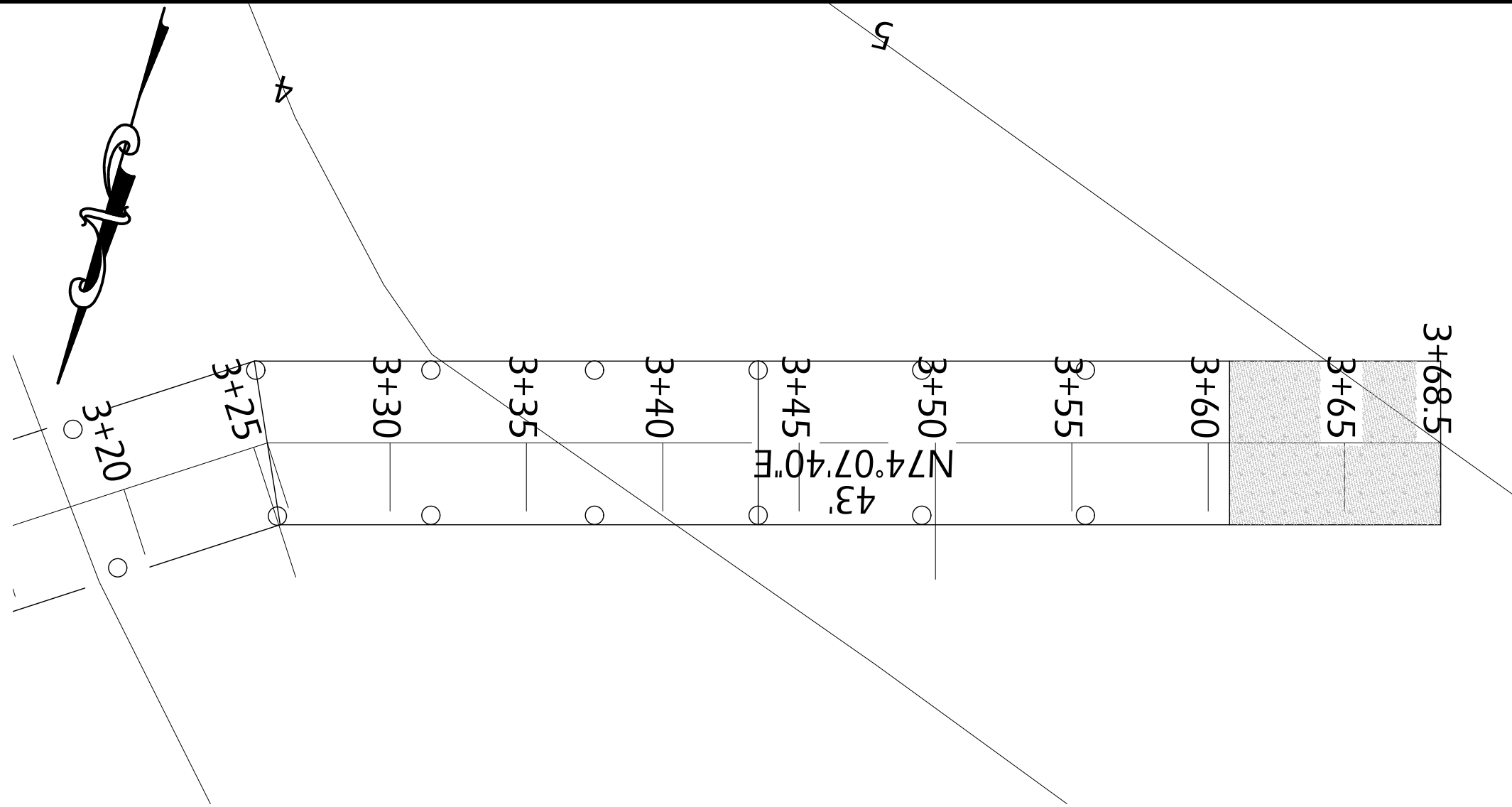
GRAHAM CREEK NATURE PRESERVE  
ACCESSIBLE PATH / BRIDGE

PROJECT 191009      DATE 03-01-2020



REV. --      SHEET 5 OF 9

L.E. STIFFLER, ENGINEER LLC  
309 W. LAUREL AVE.  
FOLEY AL 36535  
855-943-8501  
251-262-2474 FAX  
randy@lesengr.com

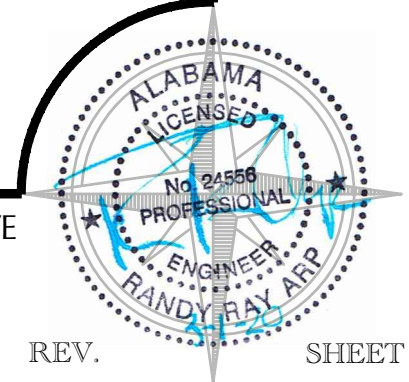


PATH LAYOUT  
SCALE: 1" = 5'



GRAHAM CREEK NATURE PRESERVE  
ACCESSIBLE PATH / BRIDGE

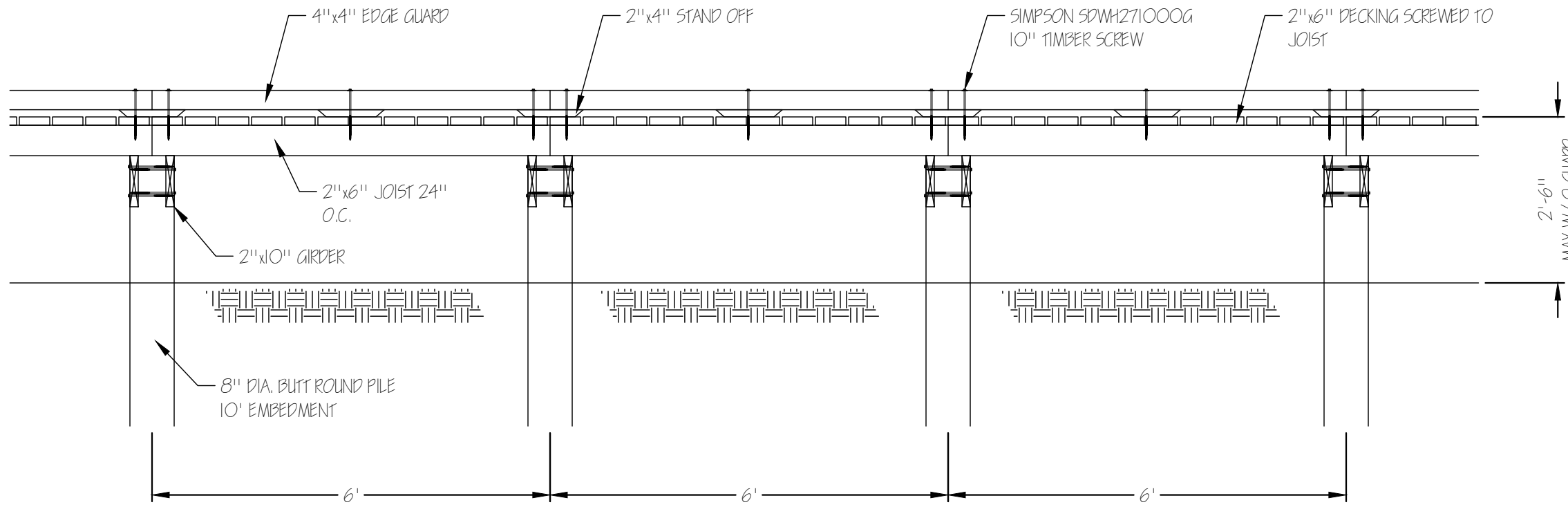
PROJECT 191009 DATE 03-01-2020



REV. --

SHEET 6 OF 9

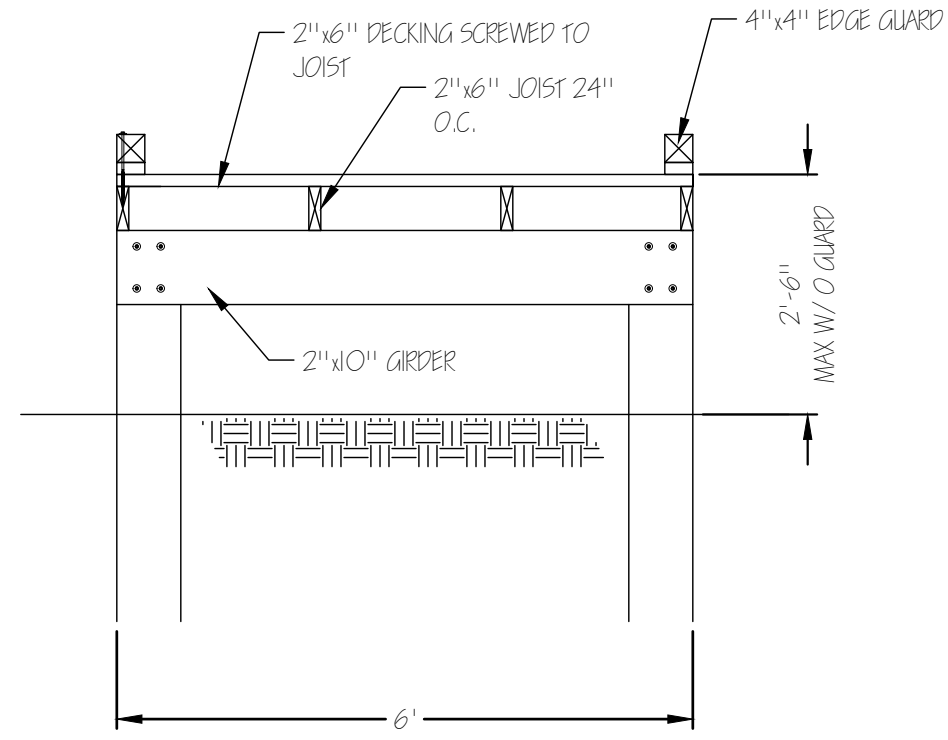
L.E. STIFFLER, ENGINEER LLC  
309 W. LAUREL AVE.  
FOLEY AL 36535  
855-943-8501  
251-262-2474 FAX  
randy@lesengr.com



- NOTES:
1. ALL WOOD MEMBERS SOUTHERN YELLOW PINE #2 PRESSURE TREATED.
  2. PILES TREATED FOR GROUND CONTACT
  3. MAXIMUM HEIGHT OR WALKWAY ABOVE GRADE IS 30" WITHOUT A GUARD.
  4. MAXIMUM GRADE IS 1:20 WITHOUT A HANDRAIL.
  5. MAXIMUM RISE BETWEEN LANDINGS IS 30 INCHES
  6. LANDINGS SHALL BE 6' x 6'
  7. MAXIMUM GRADE 1:12 WITH HANDRAIL
  8. MAXIMUM CROSS GRADE IS 1:48
  9. DESIGN LIVE LOAD 60 PSF
  10. MAXIMUM SPAN BETWEEN PILES  
2X10 GIRDER - 7 FOOT.  
2X12 GIRDER - 10 FOOT
  11. MAXIMUM CLEAR SPAN WITH 2x6 JOIST  
@ 24" CENTERS 6 FOOT.  
@ 16" CENTERS 7 FOOT.  
@ 12" CENTERS 8 FOOT.
  12. MAXIMUM CLEAR SPAN WITH 2X8 JOIST  
@ 24" CENTERS 8 FOOT.  
@ 16" CENTERS 9 FOOT.  
@ 12" CENTERS 11 FOOT.

**TYPICAL WALK-WAY SECTION  
(FLAT OR LESS THAN 1:20 SLOPE)**

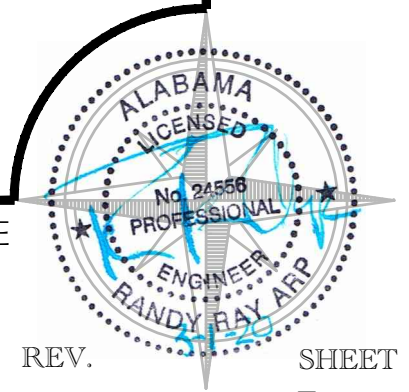
SCALE: 1/2" = 1'-0"



**TYPICAL WALK-WAY SECTION  
(FLAT OR LESS THAN 1:20 SLOPE)**

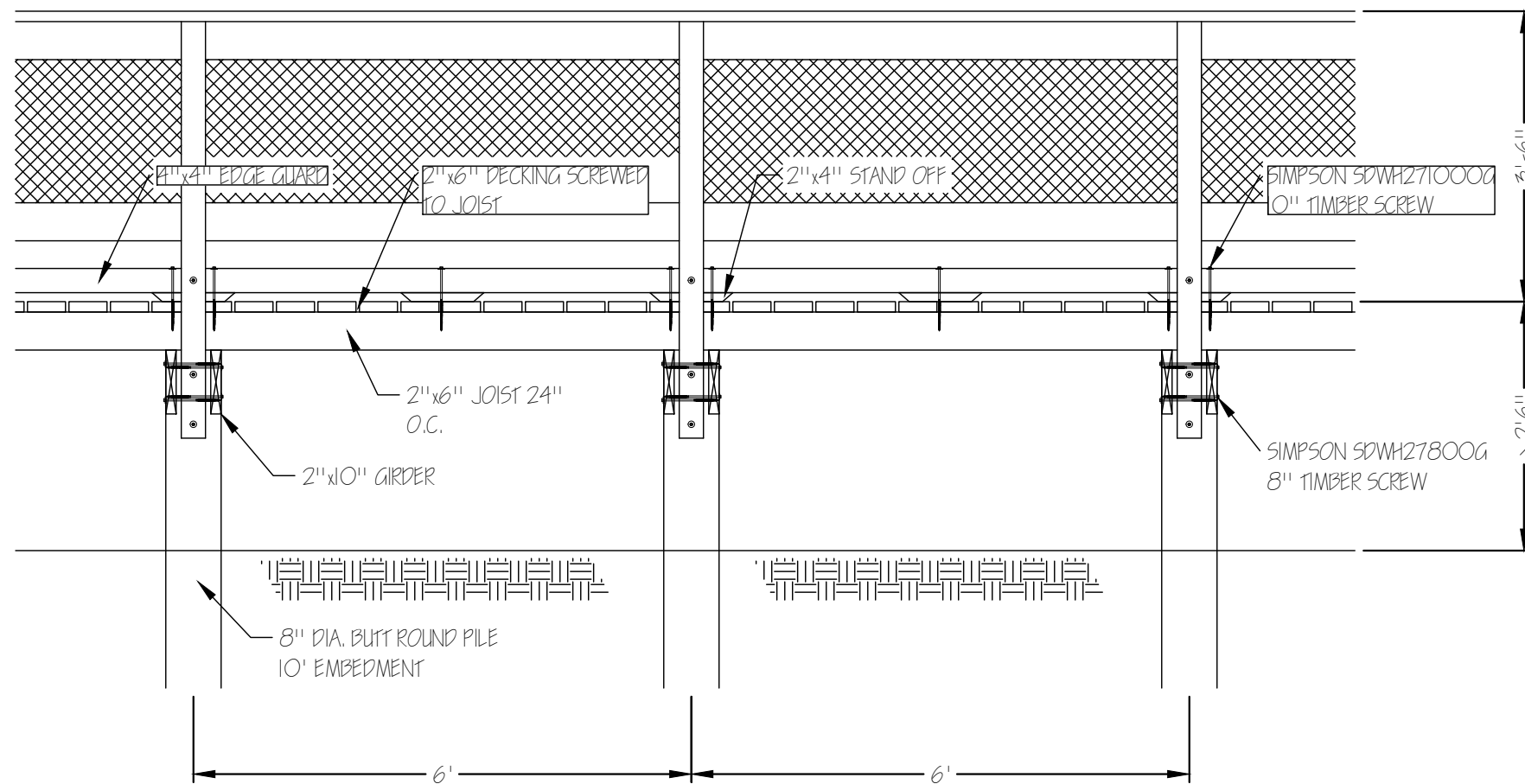
SCALE: 1/2" = 1'-0"

L.E. STIFFLER, ENGINEER LLC  
309 W. LAUREL AVE.  
FOLEY, AL 36535  
855-943-8501  
251-262-2474 FAX  
randy@lesengr.com

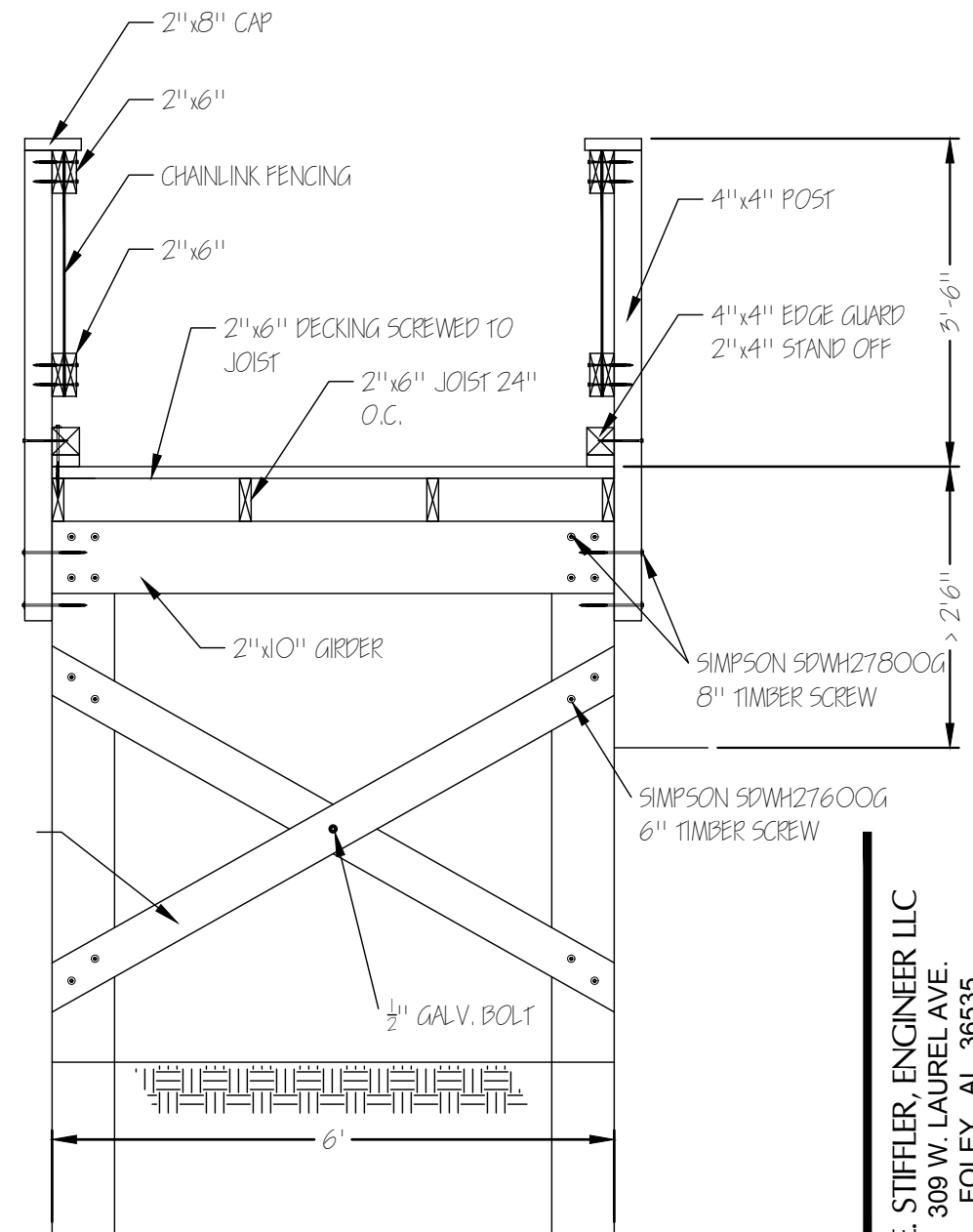


GRAHAM CREEK NATURE PRESERVE  
ACCESSIBLE PATH / BRIDGE

PROJECT	DATE	REV.	SHEET
191009	03-01-2020	--	7 OF 9

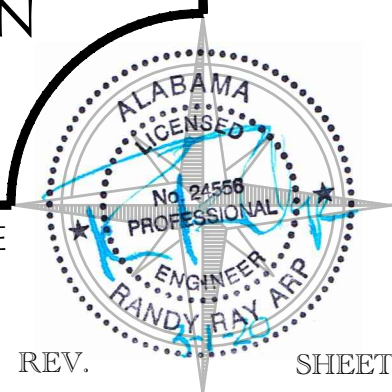


**TYPICAL WALK-WAY SECTION**  
 (FLAT OR LESS THAN 1:20 SLOPE)  
 SCALE: 1/2" = 1'-0"



**TYPICAL WALK-WAY SECTION**  
 (FLAT OR LESS THAN 1:20 SLOPE)  
 SCALE: 1/2" = 1'-0"

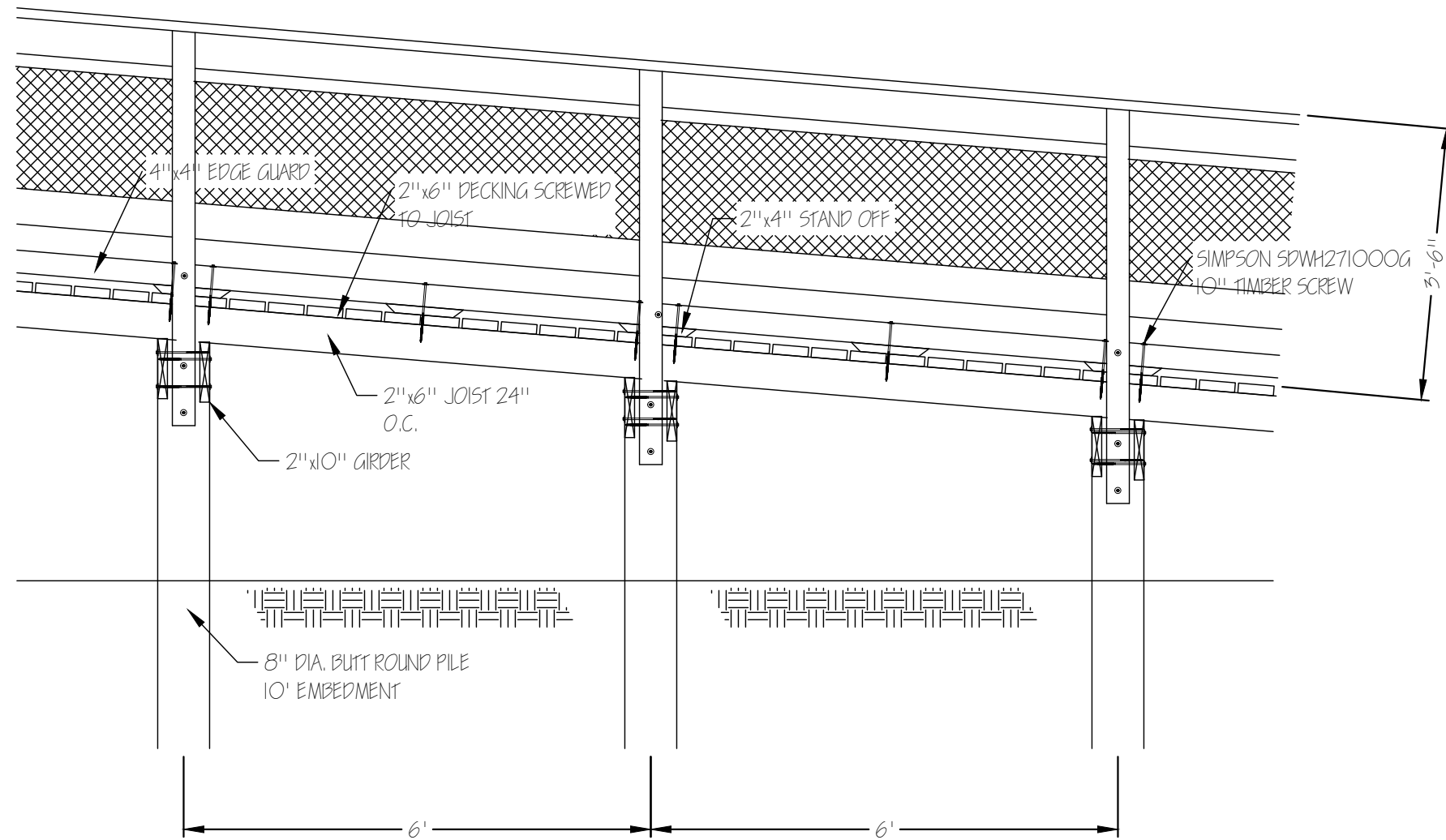
L.E. STIFFLER, ENGINEER LLC  
 309 W. LAUREL AVE.  
 FOLEY AL 36535  
 855-943-8501  
 251-262-2474 FAX  
 randy@lesengr.com



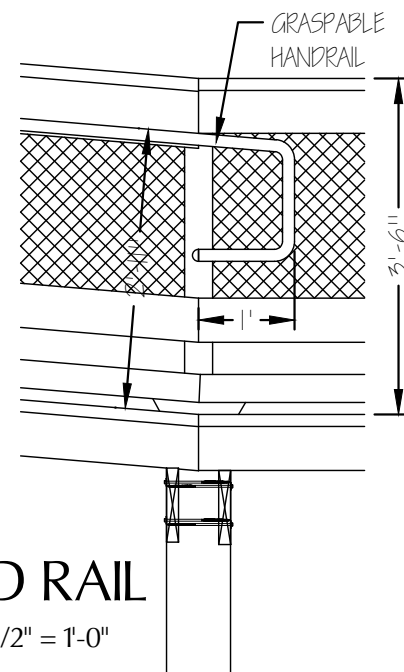
GRAHAM CREEK NATURE PRESERVE  
 ACCESSIBLE PATH / BRIDGE

PROJECT	DATE	REV.	SHEET
191009	03-01-2020	--	8 OF 9

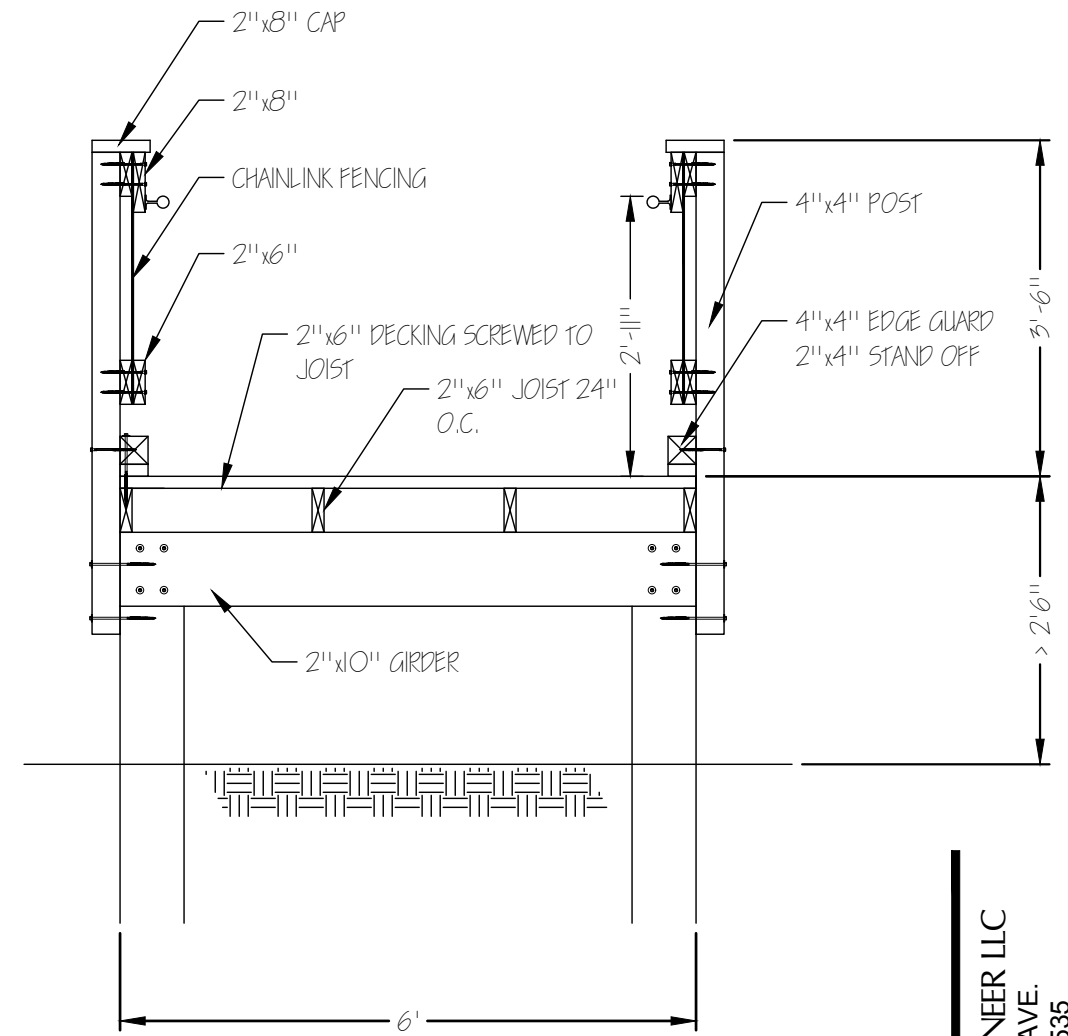




**TYPICAL WALK-WAY SECTION**  
 (1:20 TO 1:12 SLOPE)  
 SCALE: 1/2" = 1'-0"

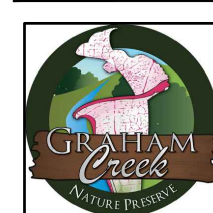
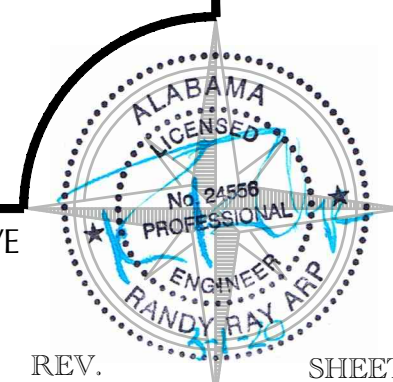


**HAND RAIL**  
 SCALE: 1/2" = 1'-0"



**TYPICAL WALK-WAY SECTION**  
 (1:20 TO 1:12 SLOPE)  
 SCALE: 1/2" = 1'-0"

L.E. STIFFLER, ENGINEER LLC  
 309 W. LAUREL AVE.  
 FOLEY AL 36535  
 855-943-8501  
 251-262-2474 FAX  
 randy@lesengr.com



GRAHAM CREEK NATURE PRESERVE  
 ACCESSIBLE PATH / BRIDGE

PROJECT	DATE	REV.	SHEET
191009	03-01-2020	--	9 OF 9