

# HAZARDOUS BUILDING MATERIAL SURVEY REPORT MERRITT COLLEGE - HORTICULTURE COMPLEX OAKLAND, CALIFORNIA

---

*Prepared for*

Peralta Community College District  
College of Alameda – Building B Demolition Project  
333 East Eight Street, Oakland, CA 94606

*Prepared by*

Terraphase Engineering Inc.  
1404 Franklin Street, Suite 600  
Oakland, California 94612

November 19, 2020

Project Number: 0034.017.001



*THIS PAGE LEFT INTENTIONALLY BLANK*

# CONTENTS

<b>ACRONYMS AND ABBREVIATIONS .....</b>	<b>III</b>
<b>CERTIFICATION .....</b>	<b>V</b>
<b>RECORD OF REVISIONS.....</b>	<b>VII</b>
<b>EXECUTIVE SUMMARY .....</b>	<b>IX</b>
<b>1.0 INTRODUCTION .....</b>	<b>1</b>
1.1 Site Description .....	1
1.2 Methodology.....	2
1.2.1 Background .....	2
1.2.2 Assessment .....	2
1.2.3 Sample Collection.....	3
1.3 Analytical Methods .....	3
1.3.1 Asbestos .....	3
1.3.2 Lead.....	3
1.3.3 PCBs.....	3
<b>2.0 REGULATORY OVERVIEW .....</b>	<b>4</b>
2.1 Asbestos-Containing Materials .....	4
2.2 Lead-Based Paints .....	4
2.3 PCB Regulated Materials.....	5
2.4 Visual Mold Assessment .....	5
<b>3.0 RESULTS .....</b>	<b>6</b>
3.1 Results of the Asbestos Building Material Survey.....	6
3.2 Results of the Lead-Based Paint Survey .....	7
3.3 Results of the PCBs Survey.....	7
3.4 Visual Mold Assessment .....	7
<b>4.0 CONCLUSIONS AND RECOMMENDATIONS .....</b>	<b>8</b>
4.1 Conclusions .....	8
4.1.1 Results of the Asbestos Survey .....	8
4.1.2 Results of the Lead-Based Paint Survey.....	8
4.1.3 Results of the PCB Evaluation .....	9
4.1.4 Visual Mold Assessment .....	9
<b>5.0 RECOMMENDATIONS .....</b>	<b>10</b>
<b>6.0 LIMITATIONS .....</b>	<b>11</b>

## TABLES

1	Summary of Bulk Asbestos Sampling Results
---	---

- 2 Summary of Bulk Lead Sampling Results
- 3 Summary of Bulk PCB Sampling Results

**FIGURE**

- 1 Vicinity Maps
- 2 Sample Location Map – First Floor

**APPENDICES**

- A Laboratory Report and Chain-of-Custody Documentation
- B Photographic Log
- C Inspector Certifications
- D CDPH Form 8552

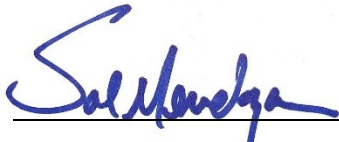
## ACRONYMS AND ABBREVIATIONS

ACM	asbestos-containing material
ACCM	asbestos-containing construction material
AQMD	Air Quality Management District
CAC	Certified Asbestos Consultant
Cal/OSHA	California Occupational Safety and Health Administration
CDPH	California Department of Public Health
CMU	Concrete Masonry Unit
DTSC	Department of Toxic Substances Control
Eurofins	Eurofins EMLab P&K Laboratory
HBMS	Hazardous Building Material Survey
HUD	Housing and Urban Development
HVAC	heating, ventilation, and air conditioning
LBP	lead-based paint
LCP	lead-containing paint
mg/cm <sup>2</sup>	milligrams per square centimeter
mg/L	milligrams per liter
NESHAP	National Emissions Standard for Hazardous Air Pollutants
OSHA	Occupational Safety and Health Administration
PCB	polychlorinated biphenyl
PE	Professional Engineer
PG	Professional Geologist
PLM	polarized light microscopy
PLM/DS	PLM with Dispersion Staining
the Site	Horticulture Complex at Merritt College in Oakland, CA
Terraphase	Terraphase Engineering Inc.

*THIS PAGE LEFT INTENTIONALLY BLANK*

## CERTIFICATION

The information, conclusions, and recommendations in this document have been reviewed by a California Certified Asbestos Consultant and/or Lead-Related Contractor Inspector/Assessor.



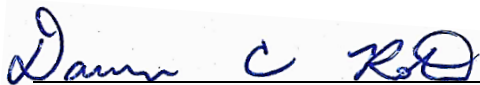
November 19, 2020

---

Salvador Mendoza, PG, CAC  
Certified Asbestos Consultant, No. 03-3386  
CDPH Lead Inspector/Assessor, No. 00000496

Date

This report was reviewed and approved by:



November 19, 2020

---

Daren Roth, CSST  
Associate Geologist  
Certified Site Surveillance Technician, No. 05-3731

Date

*THIS PAGE LEFT INTENTIONALLY BLANK*



## RECORD OF REVISIONS

Revision Number	Description	Date

*THIS PAGE LEFT INTENTIONALLY BLANK*

## EXECUTIVE SUMMARY

Terraphase Engineering Inc. was retained by the Peralta Community College District to prepare this Hazardous Building Material Survey Report for the Horticulture Complex Project (“the Site”), associated with the Merritt College located at 12500 Campus Drive in Oakland, California (Figures 1 and 2).

The hazardous building materials survey (HBMS) was conducted on October 21, 2020 in support of the building demolition project and included the assessment of potential asbestos-containing materials (ACMs), lead-based paints (LBPs), polychlorinated biphenyls (PCBs), and visual assessment for mold. Terraphase returned to the site on November 9, 2020 to collect supplemental samples of the black felt moisture barrier paper and fiberglass wall insulation. The results of the survey are summarized below.

### Asbestos Survey Results

The following materials were reported by the laboratory as containing asbestos:

- Tan pebble pattern sheet flooring located in the Headhouse office restroom encompasses approximately 20 square feet and are classified as a RACM.
- Black mastic applied to the beige 12-inch vinyl floor tiles located in the Janitor’s closet, Headhouse office area, and Classroom/Lab H101 encompasses approximately 2,150 square feet and is classified as Category II non-friable ACM.
- Black felt paper applied to the glass ceiling associated with the Headhouse hallway encompasses approximately 120 square feet and is classified as Category I non-friable ACM.
- Gray cementitious Transite™ wall panels located in the Greenhouse encompass approximately 550 square feet and are classified as a Category II non-friable ACM.

The remaining samples that were collected as part of Terraphase’s assessment were reported by the laboratory as not containing asbestos.

### Lead Survey Results

The following painted building components were identified as containing lead.

- Brown paint applied to the exterior metal wall flashing was observed to be intact and is classified as a LBP.
- White paint applied to the wooden overhang of the boiler room and associated sheds was observed to be intact and is classified as a lead-containing paint (LCP).

The remaining samples that were collected as part of Terraphase’s assessment were identified as not containing lead above the laboratory reporting limit. The laboratory reporting limit associated with the brown paint applied to the metal door of the Headhouse classroom H-108

was 94 ppm due to the sample size of 0.1059 grams. The potential exists that lead may be present below the laboratory's reporting limit and additional sampling may be warranted if the paint is to be impacted and the door is not removed intact.

### **Polychlorinated Biphenyls Results**

Analysis of the bulk sample collected as part of this assessment indicated that the sample does not contain greater than 50 milligrams per kilogram PCBs. As a result, regulated PCBs do not appear to be present at the Site. Suspect PCB-containing ballasts were not observed during Terraphase's survey.

### **Visual Mold Assessment**

Terraphase did not observe visible mold growth at the time of our assessment. Additionally, Terraphase is not aware of any reported complaints related to mold at the Site.

*THIS PAGE LEFT INTENTIONALLY BLANK*



## 1.0 INTRODUCTION

Terraphase Engineering Inc. was retained by the Peralta Community College District to prepare this Hazardous Building Material Survey Report for the Horticulture Complex Project (“the Site”), associated with the Merritt College located at 12500 Campus Drive in Oakland, California (Figures 1 and 2). The hazardous building materials survey (HBMS) was conducted on October 21, 2020 in support of the upcoming building demolition project and included the assessment of potential asbestos-containing materials (ACMs), lead-based paints (LBPs), polychlorinated biphenyls (PCBs), and visual assessment for mold. Terraphase returned to the site on November 9, 2020 to collect supplemental samples of the black felt moisture barrier paper and fiberglass wall insulation. The results of the bulk sampling are summarized in Section 3.1 below.

The visual inspection, bulk sampling, and survey documentation was conducted by Mr. Salvador Mendoza and Mr. Mike Schoedinger. Mr. Mendoza and Mr. Schoedinger are California Occupational Safety and Health Administration (Cal/OSHA) Certified Asbestos Consultant (CAC) and a California Department of Public Health (CDPH) Lead Inspector/Assessors, as required by law.

### 1.1 Site Description

The Site consists of the following buildings (from west to east); Landscape Workshop, Greenhouse, Headhouse, two standalone Classes/Labs, Lathhouse, restroom building, and Boiler and associated storage sheds. Terraphase understands that the buildings were constructed circa 1960s. Additional information for each building is provided below.

- The Landscape Workshop building encompasses approximately 2,300 square feet and was constructed with wood framed walls and ceiling. Interior finishes included a textured gypsum wall system, exposed concrete floors, and fiberglass ceiling panels throughout. Exterior finishes included painted wood siding. The roofing system consists of composition shingles.
- The Greenhouse building encompasses approximately 5,200 square feet and was constructed with metal framed glass situated on concrete masonry unit (CMU) walls. Interior walls consist of metal framed glass situated on cementitious Transite panels. The flooring consisted of exposed concrete. The roofing system consists of metal framed glass.
- The Headhouse building encompasses approximately 2,900 square feet and was constructed with wood framed walls and ceiling. Interior finishes included a textured gypsum wall system, vinyl floor tiles, sheet flooring, and exposed concrete floors. The ceiling consisted of fiberglass ceiling panels throughout. Exterior finishes included painted wood siding. The roofing system consists of composition shingles.
- The Boiler building encompasses approximately 300 square feet and was constructed with exposed CMU block walls. Interior finishes included exposed CMU block walls and exposed concrete floors. Exterior finishes included exposed CMU block walls. The

roofing system consists of composition shingles. There are seven sheds associated with the Boiler building. The sheds are similar in construction and each shed encompasses approximately 200 square feet.

- The Lathhouse encompasses approximately 5,100 square feet and was constructed with exposed wood framed walls and ceilings. Interior finishes included exposed concrete floors and the roof consists of netting.
- The two standalone Classes/Lab buildings encompass approximately 1,400 square feet and 1,700 square feet and were constructed with wood framed walls and ceilings. Interior finishes included a textured gypsum wall system, vinyl floor tiles and exposed concrete floors. The ceiling consists of fiberglass ceiling panels throughout. Exterior finishes included painted wood siding. The roofing system consists of composition shingles.
- The Restroom building encompasses approximately 500 square feet and was constructed with wood framed walls and ceilings. Interior finishes included a textured gypsum wall system, wallpaper, ceramic floor tiles, and suspended ceiling tiles throughout. Exterior finishes included painted wood siding. The roofing system consists of composition shingles.

Each of the Horticulture Complex buildings were observed to be in good condition at the time of Terraphase's assessment.

## **1.2 Methodology**

### **1.2.1 Background**

Visible, accessible, suspect ACMs, LBPs, and PCBs were identified during a walk-through of the buildings. The survey included only those areas to which Terraphase's representatives were provided access and where Terraphase's representatives deemed it safe to enter. Suspect ACMs and PCBs were divided into "homogeneous applications," and building materials were established by Terraphase's representatives to be homogeneous based on their color, texture, and age. The bulk paint chip samples were collected from predominate paint types and assessed for lead content. Terraphase's representatives collected bulk samples at the Site and submitted these samples to an accredited laboratory for asbestos, lead, and PCB analysis.

### **1.2.2 Assessment**

Assessment of a material's condition included, among other factors, area occupancy and use, existing damage, and potential for damage. Evaluation of a material's potential for damage included an evaluation of the position of the material in relation to movable objects and the material's friability.



### 1.2.3 Sample Collection

Terraphase's representatives collected bulk samples of suspect ACMs, LBPs, and PCBs from several homogeneous applications. ACMs are described in Table 1, suspected LBPs are described in Table 2, and PCBs are described in Table 3. Figure 1 depicts the site location and Figure 2 depicts the general layout of each building and approximate ACM, LBP, and PCB sampling locations. Bulk samples of various suspect ACMs, LBPs, and PCBs were placed in airtight plastic bags for transport to the laboratory. Each sample collected by Terraphase personnel was assigned its own unique identification number, which was recorded on the sample container and the bulk sample forms. The samples were collected, transported, analyzed, and stored under chain-of-custody protocols.

## 1.3 Analytical Methods

The samples were submitted to Eurofins EMLab P&K (Eurofins) in Irvine, California, for analysis. Supplemental samples were submitted to EMSL in San Leandro, California. Both laboratories hold the United States Environmental Protection Agency (U.S. EPA) certification through the National Institute for Standards and Technology National Voluntary Laboratory Accreditation Program for polarized light microscopy (PLM) analysis along with the American Industrial Hygiene Association accreditation. Copies of the bulk sample laboratory analysis results and chain-of-custody documentation are provided in Appendix A.

### 1.3.1 Asbestos

Material identification was performed using PLM with Dispersion Staining (PLM/DS) in accordance with the U.S. EPA's "Interim Method for the Determination of Asbestos in Bulk Insulation Samples" as found in 40 CFR, Part 763, subpart F, Appendix A (EPA/600/R-93/116). Percentage estimates of each material's components are based on the analyst's best judgment following PLM/DS analysis and examination with a stereoscope.

### 1.3.2 Lead

The LBP survey consisted of a site investigation to identify painted surfaces suspected of containing lead. Bulk samples were analyzed using Flame Atomic Absorption Spectrometry. The LBP survey and sampling were conducted in accordance with the HUD Guidelines for the Evaluation and Control of Lead-Based Paint Hazards in Housing (HUD 2012). The lead testing combinations were determined by Terraphase's California Department of Public Health (CDPH) certified lead-related Inspector/Assessor and are presented in Table 2.

### 1.3.3 PCBs

The PCB sample was collected by Terraphase's experienced building inspector and analyzed for PCB content using the United States Environmental Protection Agency's (U.S. EPA) Method 8082A. The PCB bulk sample result is included in Table 3.

## 2.0 REGULATORY OVERVIEW

### 2.1 Asbestos-Containing Materials

Materials containing greater than 1% asbestos are defined as ACMs by the U.S. EPA. However, Cal/OSHA regulates work practices at asbestos levels of 1% or below. The following U.S. EPA National Emission Standards for Hazardous Air Pollutants (NESHAP) definitions are utilized throughout this report.

- ***Friable Asbestos Material***, as defined by the U.S. EPA's NESHAP rule, means any material containing more than 1% asbestos as determined using the method specified in 40 CFR part 763 section 1, PLM, subpart F, Appendix A, that, when dry, can be crumbled, pulverized, or reduced to powder by hand pressure. If the asbestos content is less than 10% as determined by a method other than point counting by PLM, verify the asbestos content by point counting using PLM, or assume it to be positive.
- ***Category I Non-Friable Asbestos-Containing Material***, as defined by the U.S. EPA NESHAP, means asbestos-containing packings, gaskets, resilient floor covering and mastic, and asphalt roofing products containing more than 1% asbestos as determined using the method specified in 40 CFR part 763, section 1, PLM, subpart F, Appendix A.
- ***Category II Non-Friable Asbestos-Containing Material***, as defined by the U.S. EPA NESHAP, means any material, excluding Category I non-friable ACM, containing more than 1% asbestos as determined using the methods specified in 40 CFR part 763, section 1, PLM, subpart F, Appendix A, that, when dry, cannot be crumbled, pulverized, or reduced to powder by hand pressure.
- ***Asbestos-Containing Construction Material (ACCM)*** is a California-specific term and means any manufactured construction material which contains more than 1/10th of 1% asbestos by weight.
- ***Regulated Asbestos-Containing Material*** means any friable ACM; a Category I non-friable ACM (such as floor tiles and asphalt roofing products) that has become friable or will be subject to sanding, grinding, cutting, or abrading during demolition or demolition activities; or a Category II non-friable ACM (all other non-friable ACMs) that has a high probability of becoming friable during renovation and/or demolition activities.

### 2.2 Lead-Based Paints

The U.S. EPA, U.S. Department of Housing and Urban Development (HUD), and the CDPH define LBPs as paints containing equal to or greater than 0.5% lead by weight, 5,000 parts per million, or 1.0 milligram per square centimeter (mg/cm<sup>2</sup>) total lead. The Occupational Safety and Health Administration (OSHA) and Cal/OSHA regulations (Lead Construction Standard) do not provide a definition for LBP, but refer to the U.S. EPA, HUD, and CDPH criteria mentioned above. Cal/OSHA

is primarily concerned with worker protection, and therefore regulates any amount of lead contained within painted building components.

A lead-containing paint (LCP) is defined here as any amount of lead detected in a sample for worker protection.

### **2.3 PCB Regulated Materials**

In the past, oil containing PCBs has been used in caulking sealants and in electrical equipment, such as transformers and light ballasts, as a dielectric insulating fluid for heat dissipation. Manufacture of PCBs was banned in 1976; however, distribution of electrical equipment with PCBs was still allowed after that time. The U.S. EPA requires that insulating oils containing PCBs at concentrations greater than 50 milligrams per kilogram (mg/kg) be disposed of properly by a California-licensed hazardous waste hauler. It is also common for fluorescent light tubes and electrical thermostats to contain mercury vapor and/or fluid. If PCBs and mercury are known or presumed to be present within light ballasts, associated fluorescent tubes, and thermostats, they should be disposed of properly by a California-licensed hazardous waste hauler.

### **2.4 Visual Mold Assessment**

Currently, there are no regulatory standards for acceptable amounts of mold spores in residential or commercial structures. Regulatory limits have not been established because the relationship between levels of mold present and adverse reactions in people has not been determined by regulatory agencies.

Mold exposure does not always present a health problem indoors. However, some people are sensitive to molds. These people may experience symptoms such as nasal congestion, eye irritation, wheezing, or skin irritation when exposed to molds. Some people may have more severe reactions to molds. Severe reactions may occur among workers exposed to large amounts of molds in occupational settings. Severe reactions may include fever and shortness of breath. Immunocompromised persons and persons with chronic lung diseases are at increased risk for opportunistic infections and may develop fungal infections in their lungs.

## 3.0 RESULTS

### 3.1 Results of the Asbestos Building Material Survey

Terraphase's representatives collected a total of 68 bulk building material samples from various homogeneous applications found at the Site. The following materials were reported by the laboratory as containing asbestos:

- Tan pebble pattern sheet flooring (sample numbers 1021-10 and 1021-11) located in the Headhouse office restroom was reported by the laboratory as containing 15% asbestos in the sheet flooring and less than 1% asbestos in the mastic. The sheet flooring and mastic were observed to be in good condition, encompasses approximately 20 square feet, and are classified as a RACM.
- Black mastic applied to the beige 12-inch vinyl floor tiles (sample numbers 1021-16, 1021-17, and 1021-38) located in the Janitor's closet, Headhouse office area, and Classroom/Lab H101 was reported by the laboratory as containing between 3% and 4% asbestos in the mastic only. The floor tiles were reported by the laboratory as not containing asbestos. The floor tiles and mastic were observed to be in good condition, encompasses approximately 2,150 square feet, and is classified as Category II non-friable ACMs.
- Black felt paper (sample number 1021-22) applied to the glass ceiling associated with the Headhouse hallway was reported by the laboratory as containing 8% asbestos. The black mastic associated with this sample was reported by the laboratory as not containing asbestos. Additionally, the black felt paper associated with sample no. 1021-23 was reported by the laboratory as not containing asbestos. To further assess the black felt paper, Terraphase returned to the Site on November 9, 2020 to collect five supplemental samples (sample nos. 1109-61 through 1109-65) of the black felt paper applied to other buildings. All five samples were reported by the laboratory as not containing asbestos. The Headhouse hallway felt paper was observed to be in good condition, encompasses approximately 120 square feet, and is classified as Category I non-friable ACM.
- Gray cementitious wall panels (sample numbers 1021-59 and 1021-60) located in the Greenhouse were reported by the laboratory as containing between 2% and 12% asbestos. The cementitious Transite™ panels were observed to be in good condition, encompasses approximately 550 square feet, and are classified as a Category II non-friable ACM.

The remaining samples that were collected as part of Terraphase's assessment were reported by the laboratory as not containing asbestos. It should be noted that the potential exists for underground utilities constructed with asbestos cement (e.g., Transite™ water pipelines) and/or naturally occurring regulated material to be present beneath the Site. Additional information pertaining to the asbestos assessment is presented in Table 1. A photographic log is included in Appendix B and a copy of the inspector's certification(s) is included in Appendix C.

### 3.2 Results of the Lead-Based Paint Survey

Terraphase's representatives collected a total of five bulk samples for lead analysis. The following painted building components were identified as containing lead.

- Brown paint (sample no. L-02) applied to the exterior metal wall flashing was reported by the laboratory as containing 45,000 parts per million (ppm) lead. The brown paint was observed to be intact and is classified as a LBP.
- White paint (sample no. L-05) applied to the wooden overhang of the boiler room and associated sheds was reported by the laboratory as containing 88 parts per million (ppm) lead. The white paint was observed to be intact and is classified as a LCP.

The remaining samples that were collected as part of Terraphase's assessment were identified as not containing lead above the laboratory's reporting limit. Please note, the reporting limit associated with the brown paint applied to the metal door of the Headhouse classroom H-108 was 94 ppm due to the sample size of 0.1059 grams. The potential exists that lead may be present below the laboratory's reporting limit and additional sampling may be warranted if the paint is to be impacted and the door is not removed intact. Additional information pertaining to the lead assessment is presented in Table 2. A copy of the required CPDH form 8552 prepared by Terraphase is included in Appendix D.

### 3.3 Results of the PCBs Survey

Terraphase's representative collected a bulk sample of pipe penetration mastic located on the roof. The laboratory reported that this sample does not contain PCBs above their reporting limit of 8.4 mg/kg (which is below the guidance value of 50 mg/kg PCBs) and does not need to be abated prior to the building demolition activities. Additional information pertaining to the PCB sample is included in Table 3.

### 3.4 Visual Mold Assessment

Terraphase did not observe visible mold growth at the time of our assessment. Additionally, Terraphase is not aware of any reported complaints related to mold at the Site.

## 4.0 CONCLUSIONS AND RECOMMENDATIONS

Terraphase understands that buildings associated with the Horticulture Complex will be demolished in the near future. Our conclusions and recommendations are presented below.

### 4.1 Conclusions

#### 4.1.1 Results of the Asbestos Survey

Analytical results indicated that the following building materials contain asbestos:

- Tan pebble pattern sheet flooring located in the Headhouse office restroom encompasses approximately 20 square feet and are classified as a RACM.
- Black mastic applied to the beige 12-inch vinyl floor tiles located in the Janitor's closet, Headhouse office area, and Classroom/Lab H101 encompasses approximately 2,150 square feet and is classified as Category II non-friable ACM.
- Black felt paper applied to the glass ceiling associated with the Headhouse hallway encompasses approximately 120 square feet and is classified as Category I non-friable ACM.
- Gray cementitious Transite wall panels located in the Greenhouse encompass approximately 550 square feet and are classified as a Category II non-friable ACM.

It should be noted that the potential exists for underground utilities constructed with asbestos cement (e.g., Transite™ water pipelines) and/or naturally occurring regulated material to be present beneath the Site. A photographic log is included in Appendix B and a copy of the inspector's certification(s) are included in Appendix C.

#### 4.1.2 Results of the Lead-Based Paint Survey

The following painted building components were identified as containing lead.

- Brown paint applied to the exterior metal wall flashing was observed to be intact and is classified as a LBP.
- White paint applied to the wooden overhang of the boiler room and associated sheds was observed to be intact and is classified as a LCP.

The laboratory reporting limit associated with the brown paint applied to the metal door of the Headhouse classroom H-108 was 94 ppm due to the sample size of 0.1059 grams. The potential exists that lead may be present below the laboratory's reporting limit and additional sampling may be warranted if the paint is to be impacted and the door is not removed intact. Additional information pertaining to the lead assessment is presented in Table 2.

#### 4.1.3 Results of the PCB Evaluation

Analysis of the bulk sample collected as part of this assessment indicated that it does not contain greater than 50 mg/kg PCBs. As a result, regulated PCBs do not appear to be present at the Site.

#### 4.1.4 Visual Mold Assessment

Terraphase did not observe visible mold growth at the time of our assessment. Additionally, Terraphase is not aware of any reported complaints related to mold at the Site.

## 5.0 RECOMMENDATIONS

Based upon visual observations and subsequent laboratory analysis of building material samples collected and recorded, ACMs, LCPs, and LBPs are present at the Site. Demolition or renovation activities, which could disturb ACMs, LCPs, and LBPs should be performed by properly trained and qualified personnel only, and in accordance with federal, state, and local regulations, as implemented by Cal/OSHA, federal OSHA, U.S. EPA, the Department of Toxic Substances Control (DTSC), and the local Air Quality Management District (AQMD). Prior to any future renovation or demolition work, Terraphase recommends that the following actions be taken:

- The ACMs, LCPs, and LBPs observed to be in good condition or intact can be “managed in place” unless the materials are disturbed, repaired, or removed. Prior to demolition or renovation activities, the owner(s) of the building should retain a California-licensed abatement contractor to perform the abatement/remediation of the ACMs, LCPs, and LBPs as needed, and prior to disturbance.
- A 10-working-day notification to the local AQMD is required for every demolition or renovation project even when no ACMs are present. Prior to the initiation of the abatement work, the abatement contractor must complete a Notification of Demolition form and submit it to the local AQMD.
- The building owner or his/her representative should obtain a building renovation and/or demolition permit from the local county building department prior to proper removal and disposal of hazardous materials identified at the Site.
- Notification should be provided to contractors, subcontractors, and all other individuals having access to the building as to the presence of ACMs, LCPs, and LBPs at the Site.
- If suspect ACMs and/or LBPs that are not referenced in this report are identified during future activities, or if material that was not accessible is disturbed, Terraphase recommends that the materials be sampled and analyzed by an accredited laboratory to determine if these materials contain asbestos and/or lead.



## 6.0 LIMITATIONS

The opinions and recommendations presented in this report are based upon the scope of services, information obtained through the performance of the services, and the schedule as agreed upon by Terraphase and the party for whom this report was originally prepared. This report is an instrument of professional service and was prepared in accordance with the generally accepted standards and level of skill and care under similar conditions and circumstances established by the environmental consulting industry. No representation, warranty, or guarantee, express or implied, is intended or given. To the extent that Terraphase relied upon any information prepared by other parties not under contract to Terraphase, Terraphase makes no representation as to the accuracy or completeness of such information. This report is expressly for the sole and exclusive use of the party for whom this report was originally prepared for a particular purpose. Only the party for whom this report was originally prepared and/or other specifically named parties have the right to make use of and rely upon this report. Reuse of this report or any portion thereof for other than its intended purpose, or if modified, or if used by third parties, shall be at the user's sole risk.

The statements, opinions, and conclusions contained in this report are based solely upon the services performed by Terraphase as described in this report and the Scope of Work as established for the report by the client's budgetary and time constraints and the terms and conditions of the agreement with the client. In performing these services and preparing the report, Terraphase relied upon the work and information provided by others, including other consultants, whose information is not guaranteed by Terraphase. This report is intended for the client's sole and exclusive use and not for the benefit of others and may not be used or relied upon by others. The findings of the report are limited to those specifically expressed in the report and no other representations or warranties are given by Terraphase and no additional conclusions should be reached or representations relied on other than those expressly stated in the report and as limited by the previously agreed upon terms and conditions for this project.

Results of any investigations or testing and any findings presented in this report apply solely to conditions existing at the time when Terraphase's investigative work was performed. It must be recognized that any such investigative or testing activities are inherently limited and do not represent a conclusive or complete characterization. Conditions in other parts of the Site may vary from those at the locations where data were collected. Terraphase's ability to interpret investigation results is related to the availability of the data and the extent of the investigation activities; 100% confidence in environmental investigation conclusions cannot reasonably be achieved.

Terraphase, therefore, does not provide any guarantees, certifications, or warranties regarding any conclusions regarding environmental contamination of any such property. Furthermore, nothing contained in this document shall relieve any other party of its responsibility to abide by contract documents and applicable laws, codes, regulations, or standards.

*THIS PAGE LEFT INTENTIONALLY BLANK*

## TABLES

---

*THIS PAGE LEFT INTENTIONALLY BLANK*

**Table 1**  
**Summary of Bulk Asbestos Sampling Results**  
Merritt College - Horticulture Complex  
Oakland, California

Laboratory Report No. 2508817  
Sample Date: October 21, 2020 and November 9, 2020

Sample ID	Material Description	Material Location	Condition	Asbestos Content	Classification	Approximate Quantity
1021-01	White drywall/cream tape/white joint compound/white drywall with brown paper	Headhouse	Good	ND/ND/ND/ND	NA	NA
1021-02	White drywall/cream tape/white joint compound/white drywall with brown paper	Headhouse	Good	ND/ND/ND/ND	NA	NA
1021-03	White drywall/cream tape/white joint compound/white drywall with brown paper	Class Lab	Good	ND/ND/ND/ND	NA	NA
1021-04	White drywall/cream tape/white joint compound/white drywall with brown paper	Class Lab	Good	ND/ND/ND/ND	NA	NA
1021-37	White Joint Compound/White Drywall with Brown Paper	Classrooms H101	Good	ND/ND	NA	NA
1021-05	Black Sink Undercoating	Headhouse	Good	ND	NA	NA
1021-06	Black Sink Undercoating	Class Lab	Good	ND	NA	NA
1021-07	Brown Covebase/Dark Brown Mastic	Headhouse	Good	ND/ND	NA	NA
1021-08	Brown Covebase/Dark Brown Mastic	Private Restroom	Good	ND/ND	NA	NA
1021-09	Brown Covebase/Dark Brown Mastic	Class Lab	Good	ND/ND	NA	NA
1021-40	Brown Covebase/Dark Brown Mastic	Classrooms H101	Good	ND/ND	NA	NA
1021-10	<b>Tan pebble vinyl sheet flooring/beige mastic</b>	<b>Headhouse office restroom</b>	<b>Good</b>	<b>15%/ND</b>	<b>RACM</b>	<b>20 square feet</b>
1021-11	<b>Tan pebble vinyl sheet flooring/beige mastic</b>	<b>Headhouse office restroom</b>	<b>Good</b>	<b>15%&lt;1%</b>		
1021-12	Beige Wall Paneling	Headhouse	Good	ND	NA	NA
1021-13	White Texture/Beige Wall Paneling	Class Lab	Good	ND/ND	NA	NA
1021-39	Beige Wall Paneling (painted green)	Classrooms H101	Good	ND	NA	NA
1021-14	White 1x1 Ceiling Tile/brown adhesive	Office	Good	ND/ND	NA	NA
1021-15	White 1x1 Ceiling Tile/brown adhesive	Private Restroom	Good	ND/ND	NA	NA
1021-16	<b>Beige 12x12 Vinyl Floor Tile/black mastic</b>	<b>Janitor</b>	<b>Good</b>	<b>ND/4%</b>	<b>Category II non-friable ACM</b>	<b>2,150 square feet</b>
1021-17	<b>Beige 12x12 Vinyl Floor Tile/black mastic</b>	<b>Office</b>	<b>Good</b>	<b>ND/3%</b>		
1021-38	<b>Beige 12x12 Vinyl Floor Tile/black mastic</b>	<b>Classrooms H101</b>	<b>Good</b>	<b>ND/3%</b>		
1021-18	Fiberglass piping insulation jacket	Headhouse	Good	ND	NA	NA
1021-19	Fiberglass piping insulation jacket	Headhouse	Good	ND	NA	NA
1021-20	4'x4' ceiling panel (fiberglass)	Headhouse	Good	ND	NA	NA
1021-21	4'x4' ceiling panel (fiberglass)	Class Lab	Good	ND	NA	NA
1021-41	4'x4' ceiling panel (fiberglass)	Classrooms H101	Good	ND	NA	NA
1021-22	<b>Black Felt Moisture Barrier/Black Mastic</b>	<b>Headhouse</b>	<b>Good</b>	<b>8%/ND</b>	<b>Category I non-friable ACM</b>	<b>120 square feet</b>
1021-23	Black Felt Moisture Barrier	Class Lab	Good	ND	NA	NA
1109-61	Black Felt Moisture Barrier	Breezeway - southern end	Good	ND	NA	NA
1109-62	Black Felt Moisture Barrier	Room H105 - southern end	Good	ND	NA	NA
1109-63	Black Felt Moisture Barrier	Headroom building - northern end	Good	ND	NA	NA
1109-64	Black Felt Moisture Barrier	Toolshed building - northern end	Good	ND	NA	NA
1109-65	Black Felt Moisture Barrier	Toolshed building - southern end	Good	ND	NA	NA
1021-24	Black Roofing Shingle/Black Roof Tar/Black roofing Felt	Headhouse	Good	ND/ND/ND	NA	NA
1021-25	Black Roofing Shingle/Black Roof Tar/Black roofing Felt/Black Mastic	Class Lab	Good	ND/ND/ND/ND	NA	NA
1021-26	Black Roofing Shingle/Black Roof Tar/Black roofing Felt	Boiler Room	Good	ND/ND/ND	NA	NA
1021-27	Black Roofing Shingle/Black Roof Tar/Black roofing Felt/Brown Paper	Classrooms H101	Good	ND/ND/ND/ND	NA	NA
1021-28	Black Roofing Shingle/Black Roof Tar/Black roofing Felt/Black Mastic/Yellow Foam	Headhouse HVAC Curb	Good	ND/ND/ND/ND/ND	NA	NA
1021-29	Black Roofing Shingle/Black Roof Tar/Black roofing Felt/Black Mastic	Class Lab HVAC Curb	Good	ND/ND/ND/ND	NA	NA
1021-30	White Roof Caulking	Headhouse Parapet Cap	Good	ND	NA	NA
1021-31	White Roof Caulking	Class Lab Parapet Cap	Good	ND	NA	NA
1021-32	Gray Roof Caulking	Headhouse Breezeway Skylight	Good	ND	NA	NA
1021-33	Gray Roof Caulking	Headhouse Breezeway Skylight	Good	ND	NA	NA
1021-34	Gray Roof Mastic	Headhouse HVAC Curb	Good	ND	NA	NA
1021-35	Gray Roof Mastic	Headhouse Hatch	Good	ND	NA	NA
1021-36	Gray Roof Mastic	Class Lab HVAC Curb	Good	ND	NA	NA
1021-41	Grey wrapping/White 4" diameterTSI	Greenhouse west	Good	ND/ND	NA	NA
1021-42	Grey wrapping/White 4" diameterTSI	Boiler Room	Good	ND/ND	NA	NA
1021-43	Grey concrete Columns	Lath house Eastern half	Good	ND	NA	NA
1021-44	Grey concrete Columns	Lath house Western half	Good	ND	NA	NA
1021-45	Clear wallpaper Adhesive	RRB room H1-02	Good	ND	NA	NA
1021-46	Clear wallpaper Adhesive	RRB room H1-02	Good	ND	NA	NA
1021-47	White 2x4 ceiling tile	RRB room H1-02	Good	ND	NA	NA
1021-48	White 2x4 ceiling tile	RRB room H1-02	Good	ND	NA	NA

**Table 1**  
**Summary of Bulk Asbestos Sampling Results**  
Merritt College - Horticulture Complex  
Oakland, California

Laboratory Report No. 2508817  
Sample Date: October 21, 2020 and November 9, 2020

Sample ID	Material Description	Material Location	Condition	Asbestos Content	Classification	Approximate Quantity
1021-49	White 4x4 ceramic wall tile/white grout/clear adhesive	Women's restroom	Good	ND/ND/ND	NA	NA
1021-50	White 4x4 ceramic wall tile/white grout/clear adhesive	Men's restroom	Good	ND/ND/ND	NA	NA
1021-51	Brown 1"x1" ceramic floor tile/blk grout/white mortar	Women's restroom	Good	ND/ND/ND	NA	NA
1021-52	Brown 1"x1" ceramic floor tile/blk grout/white mortar	Men's restroom	Good	ND/ND/ND	NA	NA
1021-53	White Texture/Cream Tape/White Joint Compound/Brown Drywall with Brown Paper	Women's restroom	Good	ND/ND/ND/ND	NA	NA
1021-54	White Texture/Cream Tape/White Joint Compound/Brown Drywall with Brown Paper	Men's restroom	Good	ND/ND/ND/ND	NA	NA
1021-55	Brown CMU	Boiler Room Structure	Good	ND	NA	NA
1021-56	Brown CMU/grey grout	Boiler Room Structure	Good	ND/ND	NA	NA
1021-57	Brown CMU/Grey Grout	Greenhouse E corner	Good	ND/ND	NA	NA
1021-58	Brown CMU/Grey Grout	Greenhouse NW corner	Good	ND/ND	NA	NA
<b>1021-59</b>	<b>Grey Cementitious Wall Panels</b>	<b>Greenhouse southern area</b>	<b>Good</b>	<b>12% Chrysotile &amp; 2% Crocidolite</b>	<b>Category II non-friable ACM</b>	<b>550 square feet</b>
<b>1021-60</b>	<b>Grey Cementitious Wall Panels</b>	<b>Greenhouse northern area</b>	<b>Good</b>	<b>12% Chrysotile &amp; 2% Crocidolite</b>		
1109-66	Yellow fiberglass substrate	H101 Southern exterior	Good	ND	NA	NA
1109-67	Yellow fiberglass substrate	H101 Northern exterior	Good	ND	NA	NA

**Notes:**  
ACM = Asbestos-Containing Material  
Asbestos Content Reported as a percent (%)  
**Bold indicates sample contains asbestos**  
ID = Identification  
LF = Linear feet  
NA = Not Applicable

ND = None Detected  
Quantity reported in Square Feet  
RACM = regulated asbestos-containing material

<sup>1</sup> Electrical wire insulation will not be sampled unless electrical power is disconnected prior to sampling.

**Table 2**  
**Summary of Bulk Lead Sampling Results**  
Merritt College - Horticulture Complex  
Oakland, California

Laboratory Report No. 2508713  
Sample Date: October 21, 2020

Item Number	Paint Color	Component	Substrate	Condition	Location(s) of Materials	Lead Content (ppm)	Classification
L-01	White	Wall	Drywall	Intact	Women's restroom northeast corner	<39	NA
<b>L-02</b>	<b>Brown</b>	<b>Wall</b>	<b>Metal flashing</b>	<b>Intact</b>	<b>Restroom North exterior wall</b>	<b>45,000</b>	<b>LBP</b>
L-03	Brown	Door Trim	Wood	Intact	Headhouse H-108	<39	NA
L-04	Brown	Door	Metal	Intact	Headhouse H-108	<94	NA
<b>L-05</b>	<b>White</b>	<b>Ceiling</b>	<b>Wood</b>	<b>Intact</b>	<b>Boiler Room H121F</b>	<b>88</b>	<b>LCP</b>

**Notes:**

Lead Content Reported as a parts per million

**Bold indicates sample contains lead**

ID = Identification

LCP = Lead-containing paint

LBP = Lead-Based Paint

LF = Linear feet

NA = Not Applicable

Quantity reported in Square Feet

ppm = parts per million

**Table 3**  
**Summary of PCB Sampling Results and Universal Waste**  
Merritt College - Horticulture Complex  
Oakland, California

Laboratory Report No. 2508591  
Sample Date: October 21, 2020

Item Number	Paint Color	Component	Substrate	Condition	Location(s) of Materials	PCB Content	Classification
P-01	Penetration Mastic	Pipe	Metal	Intact	Roof	<8.4 mg/kg	NA

**Abbreviations**

NA = not applicable

PCB = polychlorinated biphenyls

mg/kg = milligrams per kilogram

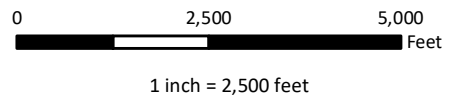
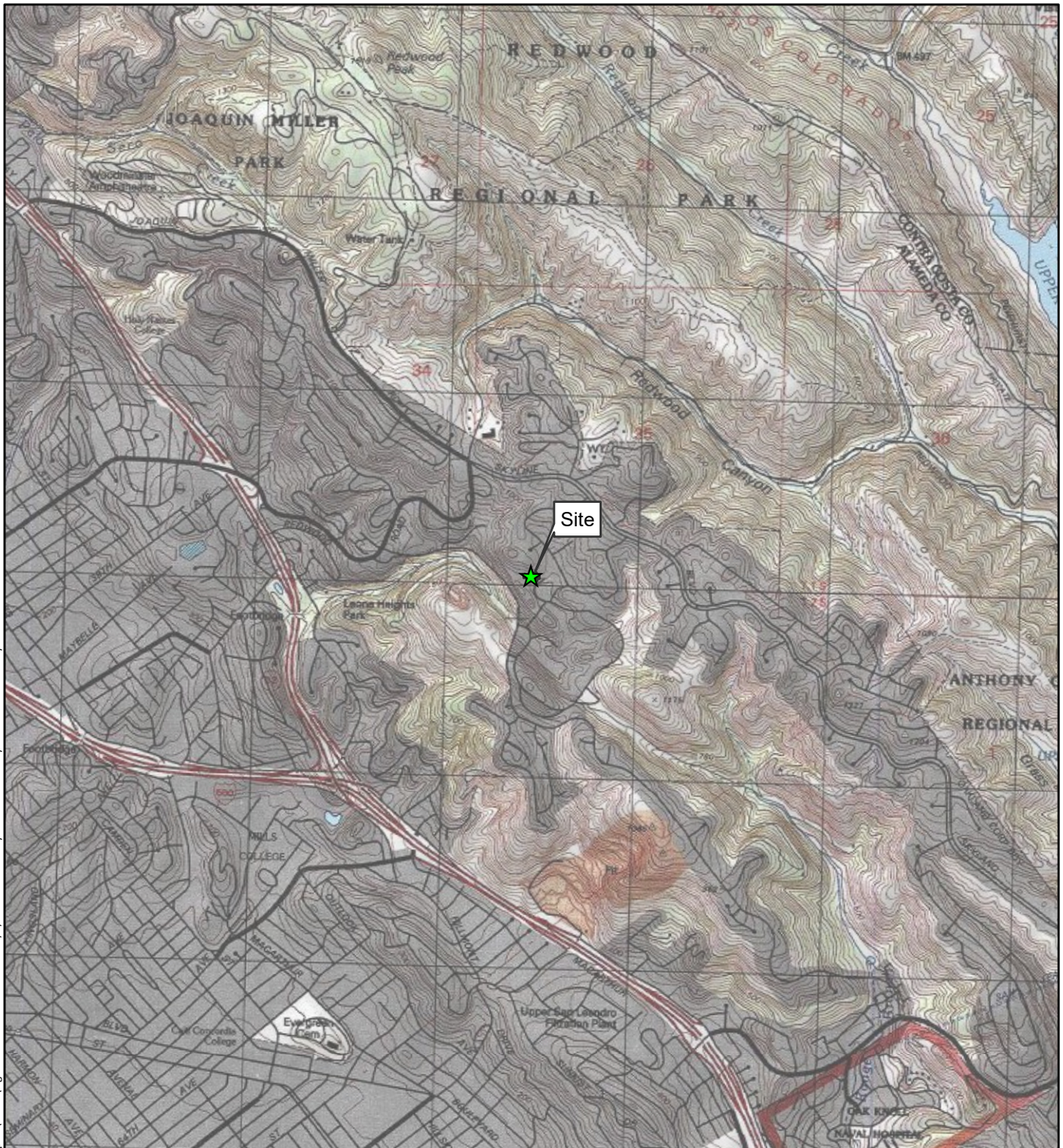


## FIGURES

---

*THIS PAGE LEFT INTENTIONALLY BLANK*

File: N:\GIS\Prj\0034.017 - Perata CC - HBMS Horticulture Complex\MXDs\Figure 1 - Site Location.mxd 11/6/2020 Created by: BKO Checked by: SM Coordinate System: NAD 1983 StatePlane California III FIPS 0403 Feet



**Legend**

★ Site Location

Base Map: USGS 7.5 Minute Quadrangle for Oakland East, CA

	<p>CLIENT: Peralta Community College</p>	<p><b>Site Location</b></p>
	<p>PROJECT: Phase II and HBMS Horticulture Complex 12500 Campus Dr, Oakland, CA</p>	
	<p>PROJECT NUMBER: 0034.017.001</p>	<p><b>FIGURE 1</b></p>

File: N:\GIS\SP\0034\_017 - Peralta CC - HBMS Horticulture Complex\MXD\Figure 2 - Sample Location Map.mxd 11/13/2020 Created by: BKD Checked by: SM Coordinate System: NAD 1983 StatePlane California III FIPS 0403 Feet



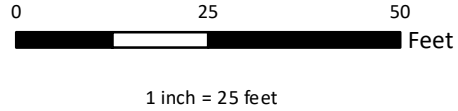
**Legend**

- Asbestos Sample
- Lead Sample
- PCBs Sample
- Site Buildings

**Notes**

- Sample locations are approximate
- Asbestos bulk samples preceded by "1021" and "1109" to be consistent with Table 1 and laboratory reports

Aerial imagery source: Nearmap, October 13<sup>th</sup>, 2020



	CLIENT: Peralta Community College	<b>Site Sample Locations</b>
	PROJECT: Phase II and HBMS Horticulture Complex 12500 Campus Dr, Oakland, CA	
PROJECT NUMBER: 0034.017.001	<b>FIGURE 2</b>	

**APPENDIX A**  
**LABORATORY REPORT AND CHAIN-OF-CUSTODY DOCUMENTATION**

---

*THIS PAGE LEFT INTENTIONALLY BLANK*

Report for:

**Salvador Mendoza**  
**Terraphase Engineering Inc**  
1404 Franklin Street  
Suite 600  
Oakland, CA 94612

---

Regarding: Project: 034.017.001; Phare II and HBMS Horticulture Complex  
EML ID: 2508817

Approved by:

Dates of Analysis:  
Asbestos PLM: 10-28-2020



Approved Signatory  
David Andrews

Service SOPs: Asbestos PLM (EPA 40CFR App E to Sub E of Part 763 & EPA METHOD 600/R-93-116, SOP EM-AS-S-1267)  
NVLAP Lab Code 600266-0

---

All samples were received in acceptable condition unless noted in the Report Comments portion in the body of the report. The results relate only to the samples as received. The results include an inherent uncertainty of measurement associated with estimating percentages by polarized light microscopy. Measurement uncertainty data for sample results with >1% asbestos concentration can be provided when requested.

Eurofins EMLab P&K ("the Company") shall have no liability to the client or the client's customer with respect to decisions or recommendations made, actions taken or courses of conduct implemented by either the client or the client's customer as a result of or based upon the Test Results. In no event shall the Company be liable to the client with respect to the Test Results except for the Company's own willful misconduct or gross negligence nor shall the Company be liable for incidental or consequential damages or lost profits or revenues to the fullest extent such liability may be disclaimed by law, even if the Company has been advised of the possibility of such damages, lost profits or lost revenues. In no event shall the Company's liability with respect to the Test Results exceed the amount paid to the Company by the client therefor.

Client: Terraphase Engineering Inc  
C/O: Salvador Mendoza  
Re: 034.017.001; Phare II and HBMS Horticulture Complex

Date of Sampling: 10-21-2020  
Date of Receipt: 10-23-2020 and 10-28-2020  
Date of Report: 10-28-2020

**ASBESTOS PLM REPORT**

**Total Samples Submitted:** 61

**Total Samples Analyzed:** 61

**Total Samples with Layer Asbestos Content > 1%:** 8

**Location: 1021-01, White drywall/white joint compound-headhouse**

Lab ID-Version‡: 11954145-1

Sample Layers	Asbestos Content
White Texture	ND
Cream Tape	ND
White Joint Compound	ND
White Drywall with Brown Paper	ND
<b>Composite Non-Asbestos Content:</b>	15% Cellulose 2% Glass Fibers
<b>Sample Composite Homogeneity:</b>	Poor

**Location: 1021-02, White drywall/white joint compound-headhouse**

Lab ID-Version‡: 11954146-1

Sample Layers	Asbestos Content
White Texture	ND
Cream Tape	ND
White Joint Compound	ND
White Drywall with Brown Paper	ND
<b>Composite Non-Asbestos Content:</b>	15% Cellulose 2% Glass Fibers
<b>Sample Composite Homogeneity:</b>	Poor

**Location: 1021-03, White drywall/white joint compound-class lab**

Lab ID-Version‡: 11954147-1

Sample Layers	Asbestos Content
White Texture	ND
Cream Tape	ND
White Joint Compound	ND
White Drywall with Brown Paper	ND
<b>Composite Non-Asbestos Content:</b>	15% Cellulose 2% Glass Fibers
<b>Sample Composite Homogeneity:</b>	Poor

The test report shall not be reproduced except in full, without written approval of the laboratory. The report must not be used by the client to claim product certification, approval, or endorsement by any agency of the federal government. Eurofins EMLab P&K reserves the right to dispose of all samples after a period of thirty (30) days, according to all state and federal guidelines, unless otherwise specified.

Inhomogeneous samples are separated into homogeneous subsamples and analyzed individually. ND means no fibers were detected. When detected, the minimum detection and reporting limit is less than 1% unless point counting is performed. Floor tile samples may contain large amounts of interference material and it is recommended that the sample be analyzed by gravimetric point count analysis to lower the detection limit and to aid in asbestos identification.

‡ A "Version" indicated by "-x" after the Lab ID# with a value greater than 1 indicates a sample with amended data. The revision number is reflected by the value of "x".



Client: Terraphase Engineering Inc  
C/O: Salvador Mendoza  
Re: 034.017.001; Phare II and HBMS Horticulture  
Complex

Date of Sampling: 10-21-2020  
Date of Receipt: 10-23-2020 and 10-28-2020  
Date of Report: 10-28-2020

**ASBESTOS PLM REPORT**

**Location: 1021-04, White drywall/white joint compound-class lab**

Lab ID-Version‡: 11954148-1

Sample Layers	Asbestos Content
White Texture	ND
Cream Tape	ND
White Joint Compound	ND
White Drywall with Brown Paper	ND
<b>Composite Non-Asbestos Content:</b>	15% Cellulose 2% Glass Fibers
<b>Sample Composite Homogeneity:</b>	Poor

**Location: 1021-05, Black sink undercoating-headhouse**

Lab ID-Version‡: 11954149-1

Sample Layers	Asbestos Content
Black Sink Undercoating	ND
<b>Sample Composite Homogeneity:</b>	Good

The test report shall not be reproduced except in full, without written approval of the laboratory. The report must not be used by the client to claim product certification, approval, or endorsement by any agency of the federal government. Eurofins EMLab P&K reserves the right to dispose of all samples after a period of thirty (30) days, according to all state and federal guidelines, unless otherwise specified.

Inhomogeneous samples are separated into homogeneous subsamples and analyzed individually. ND means no fibers were detected. When detected, the minimum detection and reporting limit is less than 1% unless point counting is performed. Floor tile samples may contain large amounts of interference material and it is recommended that the sample be analyzed by gravimetric point count analysis to lower the detection limit and to aid in asbestos identification.

‡ A "Version" indicated by -"x" after the Lab ID# with a value greater than 1 indicates a sample with amended data. The revision number is reflected by the value of "x".

Client: Terraphase Engineering Inc  
C/O: Salvador Mendoza  
Re: 034.017.001; Phare II and HBMS Horticulture Complex

Date of Sampling: 10-21-2020  
Date of Receipt: 10-23-2020 and 10-28-2020  
Date of Report: 10-28-2020

**ASBESTOS PLM REPORT**

**Location: 1021-06, Black sink undercoating-class lab**

Lab ID-Version‡: 11954150-1

Sample Layers	Asbestos Content
Black Sink Undercoating	ND
<b>Sample Composite Homogeneity:</b> Good	

**Location: 1021-07, Brown covebase mastic-headhouse**

Lab ID-Version‡: 11954151-1

Sample Layers	Asbestos Content
Brown Baseboard	ND
Dark Brown Mastic	ND
<b>Sample Composite Homogeneity:</b> Moderate	

**Location: 1021-08, Brown covebase mastic-private rrestroom**

Lab ID-Version‡: 11954152-1

Sample Layers	Asbestos Content
Brown Baseboard	ND
Dark Brown Mastic	ND
<b>Sample Composite Homogeneity:</b> Moderate	

**Location: 1021-09, Brown covebase mastic-class lab**

Lab ID-Version‡: 11954153-1

Sample Layers	Asbestos Content
Brown Baseboard	ND
Dark Brown Mastic	ND
<b>Sample Composite Homogeneity:</b> Moderate	

The test report shall not be reproduced except in full, without written approval of the laboratory. The report must not be used by the client to claim product certification, approval, or endorsement by any agency of the federal government. Eurofins EMLab P&K reserves the right to dispose of all samples after a period of thirty (30) days, according to all state and federal guidelines, unless otherwise specified.

Inhomogeneous samples are separated into homogeneous subsamples and analyzed individually. ND means no fibers were detected. When detected, the minimum detection and reporting limit is less than 1% unless point counting is performed. Floor tile samples may contain large amounts of interference material and it is recommended that the sample be analyzed by gravimetric point count analysis to lower the detection limit and to aid in asbestos identification.

‡ A "Version" indicated by "-x" after the Lab ID# with a value greater than 1 indicates a sample with amended data. The revision number is reflected by the value of "x".

Client: Terraphase Engineering Inc  
 C/O: Salvador Mendoza  
 Re: 034.017.001; Phare II and HBMS Horticulture  
 Complex

Date of Sampling: 10-21-2020  
 Date of Receipt: 10-23-2020 and 10-28-2020  
 Date of Report: 10-28-2020

**ASBESTOS PLM REPORT****Location: 1021-10, Tan pebble vinyl sheet flooring/beige mastic-private restroom**

Lab ID-Version‡: 11954154-1

Sample Layers	Asbestos Content
Tan Sheet Flooring with Fibrous Backing	15% Chrysotile
Beige Mastic	ND
<b>Sample Composite Homogeneity:</b> Moderate	

**Location: 1021-11, Tan pebble vinyl sheet flooring/beige mastic-private restroom**

Lab ID-Version‡: 11954155-1

Sample Layers	Asbestos Content
Tan Sheet Flooring with Fibrous Backing	15% Chrysotile
Beige Mastic	< 1% Chrysotile
<b>Sample Composite Homogeneity:</b> Moderate	

**Comments:** Mastic layer inseparable without cross contamination.

**Location: 1021-12, Beige wall paneling-headhouse**

Lab ID-Version‡: 11954156-1

Sample Layers	Asbestos Content
Beige Fibrous Material	ND
<b>Composite Non-Asbestos Content:</b> 90% Cellulose	
<b>Sample Composite Homogeneity:</b> Good	

**Location: 1021-13, Beige wall paneling-class lab**

Lab ID-Version‡: 11954157-1

Sample Layers	Asbestos Content
White Texture	ND
Beige Fibrous Material	ND
<b>Composite Non-Asbestos Content:</b> 85% Cellulose	
<b>Sample Composite Homogeneity:</b> Moderate	

The test report shall not be reproduced except in full, without written approval of the laboratory. The report must not be used by the client to claim product certification, approval, or endorsement by any agency of the federal government. Eurofins EMLab P&K reserves the right to dispose of all samples after a period of thirty (30) days, according to all state and federal guidelines, unless otherwise specified.

Inhomogeneous samples are separated into homogeneous subsamples and analyzed individually. ND means no fibers were detected. When detected, the minimum detection and reporting limit is less than 1% unless point counting is performed. Floor tile samples may contain large amounts of interference material and it is recommended that the sample be analyzed by gravimetric point count analysis to lower the detection limit and to aid in asbestos identification.

‡ A "Version" indicated by "-x" after the Lab ID# with a value greater than 1 indicates a sample with amended data. The revision number is reflected by the value of "x".

Client: Terraphase Engineering Inc  
 C/O: Salvador Mendoza  
 Re: 034.017.001; Phare II and HBMS Horticulture  
 Complex

Date of Sampling: 10-21-2020  
 Date of Receipt: 10-23-2020 and 10-28-2020  
 Date of Report: 10-28-2020

**ASBESTOS PLM REPORT****Location: 1021-14, White 1x1 ceiling tile/brown adhesive-office**

Lab ID-Version‡: 11954158-1

Sample Layers	Asbestos Content
White Ceiling Tile	ND
Brown Adhesive	ND
<b>Composite Non-Asbestos Content:</b>	90% Cellulose
<b>Sample Composite Homogeneity:</b>	Good

**Location: 1021-15, White 1x1 ceiling tile/brown adhesive-private restroom**

Lab ID-Version‡: 11954159-1

Sample Layers	Asbestos Content
White Ceiling Tile	ND
Brown Adhesive	ND
<b>Composite Non-Asbestos Content:</b>	90% Cellulose
<b>Sample Composite Homogeneity:</b>	Good

**Location: 1021-16, Beige 12x12 vinyl floor tile/blackmastic-janitor**

Lab ID-Version‡: 11954160-1

Sample Layers	Asbestos Content
Beige Floor Tile	ND
Black Mastic	4% Chrysotile
<b>Sample Composite Homogeneity:</b>	Moderate

**Location: 1021-17, Beige 12x12 vinyl floor tile/blackmastic-office**

Lab ID-Version‡: 11954161-1

Sample Layers	Asbestos Content
Beige Floor Tile	ND
Black Mastic	3% Chrysotile
<b>Sample Composite Homogeneity:</b>	Moderate

The test report shall not be reproduced except in full, without written approval of the laboratory. The report must not be used by the client to claim product certification, approval, or endorsement by any agency of the federal government. Eurofins EMLab P&K reserves the right to dispose of all samples after a period of thirty (30) days, according to all state and federal guidelines, unless otherwise specified.

Inhomogeneous samples are separated into homogeneous subsamples and analyzed individually. ND means no fibers were detected. When detected, the minimum detection and reporting limit is less than 1% unless point counting is performed. Floor tile samples may contain large amounts of interference material and it is recommended that the sample be analyzed by gravimetric point count analysis to lower the detection limit and to aid in asbestos identification.

‡ A "Version" indicated by "-x" after the Lab ID# with a value greater than 1 indicates a sample with amended data. The revision number is reflected by the value of "x".

Client: Terraphase Engineering Inc  
 C/O: Salvador Mendoza  
 Re: 034.017.001; Phare II and HBMS Horticulture  
 Complex

Date of Sampling: 10-21-2020  
 Date of Receipt: 10-23-2020 and 10-28-2020  
 Date of Report: 10-28-2020

**ASBESTOS PLM REPORT****Location: 1021-18, Fiberglass piping insulation jacket-headhouse**

Lab ID-Version‡: 11954162-1

Sample Layers	Asbestos Content
Yellow Insulation	ND
<b>Composite Non-Asbestos Content:</b>	85% Glass Fibers 10% Cellulose
<b>Sample Composite Homogeneity:</b>	Good

**Location: 1021-19, Fiberglass piping insulation jacket-headhouse**

Lab ID-Version‡: 11954163-1

Sample Layers	Asbestos Content
Yellow Insulation	ND
<b>Composite Non-Asbestos Content:</b>	85% Glass Fibers 10% Cellulose
<b>Sample Composite Homogeneity:</b>	Good

**Location: 1021-20, 4'x4' ceiling panel (fiberglass)-headhouse**

Lab ID-Version‡: 11954164-1

Sample Layers	Asbestos Content
Yellow Insulation	ND
<b>Composite Non-Asbestos Content:</b>	95% Glass Fibers
<b>Sample Composite Homogeneity:</b>	Good

**Location: 1021-21, 4'x4' ceiling panel (fiberglass)-class lab**

Lab ID-Version‡: 11954165-1

Sample Layers	Asbestos Content
Yellow Insulation	ND
<b>Composite Non-Asbestos Content:</b>	95% Glass Fibers
<b>Sample Composite Homogeneity:</b>	Good

The test report shall not be reproduced except in full, without written approval of the laboratory. The report must not be used by the client to claim product certification, approval, or endorsement by any agency of the federal government. Eurofins EMLab P&K reserves the right to dispose of all samples after a period of thirty (30) days, according to all state and federal guidelines, unless otherwise specified.

Inhomogeneous samples are separated into homogeneous subsamples and analyzed individually. ND means no fibers were detected. When detected, the minimum detection and reporting limit is less than 1% unless point counting is performed. Floor tile samples may contain large amounts of interference material and it is recommended that the sample be analyzed by gravimetric point count analysis to lower the detection limit and to aid in asbestos identification.

‡ A "Version" indicated by "-x" after the Lab ID# with a value greater than 1 indicates a sample with amended data. The revision number is reflected by the value of "x".

Client: Terraphase Engineering Inc  
C/O: Salvador Mendoza  
Re: 034.017.001; Phare II and HBMS Horticulture Complex

Date of Sampling: 10-21-2020  
Date of Receipt: 10-23-2020 and 10-28-2020  
Date of Report: 10-28-2020

**ASBESTOS PLM REPORT**

**Location: 1021-22, Felt moisture barrier-headhouse**

Lab ID-Version‡: 11954166-1

Sample Layers	Asbestos Content
Black Vapor Barrier	8% Chrysotile
Black Mastic	ND
<b>Composite Non-Asbestos Content:</b>	55% Cellulose 10% Glass Fibers
<b>Sample Composite Homogeneity:</b>	Moderate

**Location: 1021-23, Felt moisture barrier-class lab**

Lab ID-Version‡: 11954167-1

Sample Layers	Asbestos Content
Black Vapor Barrier	ND
<b>Composite Non-Asbestos Content:</b>	85% Cellulose
<b>Sample Composite Homogeneity:</b>	Good

**Location: 1021-24, Built-up roofing (tar and gravel)-headhouse**

Lab ID-Version‡: 11954168-1

Sample Layers	Asbestos Content
Black Roofing Shingle	ND
Black Roofing Tar	ND
Black Roofing Felt	ND
<b>Composite Non-Asbestos Content:</b>	35% Glass Fibers
<b>Sample Composite Homogeneity:</b>	Moderate

**Location: 1021-25, Built-up roofing (tar and gravel)-class lab**

Lab ID-Version‡: 11954169-1

Sample Layers	Asbestos Content
Black Roofing Shingle	ND
Black Roofing Tar	ND
Black Roofing Felt	ND
Black Mastic	ND
<b>Composite Non-Asbestos Content:</b>	35% Glass Fibers 4% Cellulose
<b>Sample Composite Homogeneity:</b>	Moderate

The test report shall not be reproduced except in full, without written approval of the laboratory. The report must not be used by the client to claim product certification, approval, or endorsement by any agency of the federal government. Eurofins EMLab P&K reserves the right to dispose of all samples after a period of thirty (30) days, according to all state and federal guidelines, unless otherwise specified.

Inhomogeneous samples are separated into homogeneous subsamples and analyzed individually. ND means no fibers were detected. When detected, the minimum detection and reporting limit is less than 1% unless point counting is performed. Floor tile samples may contain large amounts of interference material and it is recommended that the sample be analyzed by gravimetric point count analysis to lower the detection limit and to aid in asbestos identification.

‡ A "Version" indicated by -"x" after the Lab ID# with a value greater than 1 indicates a sample with amended data. The revision number is reflected by the value of "x".

Client: Terraphase Engineering Inc  
C/O: Salvador Mendoza  
Re: 034.017.001; Phare II and HBMS Horticulture Complex

Date of Sampling: 10-21-2020  
Date of Receipt: 10-23-2020 and 10-28-2020  
Date of Report: 10-28-2020

**ASBESTOS PLM REPORT**

**Location: 1021-26, Built-up roofing (tar and gravel)-boiler room**

Lab ID-Version‡: 11954170-1

Sample Layers	Asbestos Content
Black Roofing Shingle	ND
Black Roofing Tar	ND
Black Roofing Felt	ND
<b>Composite Non-Asbestos Content:</b>	35% Glass Fibers
<b>Sample Composite Homogeneity:</b>	Moderate

**Location: 1021-27, Built-up roofing (tar and gravel)-classrooms H101**

Lab ID-Version‡: 11954171-1

Sample Layers	Asbestos Content
Black Roofing Shingle	ND
Black Roofing Tar	ND
Black Roofing Felt	ND
Brown Paper	ND
<b>Composite Non-Asbestos Content:</b>	35% Glass Fibers 5% Cellulose
<b>Sample Composite Homogeneity:</b>	Moderate

**Location: 1021-28, Roof flashing-headhouse HVAC curb**

Lab ID-Version‡: 11954172-1

Sample Layers	Asbestos Content
Black Roofing Shingle	ND
Black Roofing Tar	ND
Black Roofing Felt	ND
Black Mastic	ND
Yellow Foam	ND
<b>Composite Non-Asbestos Content:</b>	35% Glass Fibers 4% Cellulose
<b>Sample Composite Homogeneity:</b>	Poor

The test report shall not be reproduced except in full, without written approval of the laboratory. The report must not be used by the client to claim product certification, approval, or endorsement by any agency of the federal government. Eurofins EMLab P&K reserves the right to dispose of all samples after a period of thirty (30) days, according to all state and federal guidelines, unless otherwise specified.

Inhomogeneous samples are separated into homogeneous subsamples and analyzed individually. ND means no fibers were detected. When detected, the minimum detection and reporting limit is less than 1% unless point counting is performed. Floor tile samples may contain large amounts of interference material and it is recommended that the sample be analyzed by gravimetric point count analysis to lower the detection limit and to aid in asbestos identification.

‡ A "Version" indicated by "-x" after the Lab ID# with a value greater than 1 indicates a sample with amended data. The revision number is reflected by the value of "x".

Client: Terraphase Engineering Inc  
C/O: Salvador Mendoza  
Re: 034.017.001; Phare II and HBMS Horticulture  
Complex

Date of Sampling: 10-21-2020  
Date of Receipt: 10-23-2020 and 10-28-2020  
Date of Report: 10-28-2020

**ASBESTOS PLM REPORT**

**Location: 1021-29, Roof flashing-class lab HVAC curb**

Lab ID-Version‡: 11954173-1

Sample Layers	Asbestos Content
Black Roofing Shingle	ND
Black Roofing Tar	ND
Black Roofing Felt	ND
Black Mastic	ND
<b>Composite Non-Asbestos Content:</b>	35% Glass Fibers 4% Cellulose
<b>Sample Composite Homogeneity:</b>	Poor

The test report shall not be reproduced except in full, without written approval of the laboratory. The report must not be used by the client to claim product certification, approval, or endorsement by any agency of the federal government. Eurofins EMLab P&K reserves the right to dispose of all samples after a period of thirty (30) days, according to all state and federal guidelines, unless otherwise specified.

Inhomogeneous samples are separated into homogeneous subsamples and analyzed individually. ND means no fibers were detected. When detected, the minimum detection and reporting limit is less than 1% unless point counting is performed. Floor tile samples may contain large amounts of interference material and it is recommended that the sample be analyzed by gravimetric point count analysis to lower the detection limit and to aid in asbestos identification.

‡ A "Version" indicated by -"x" after the Lab ID# with a value greater than 1 indicates a sample with amended data. The revision number is reflected by the value of "x".



Client: Terraphase Engineering Inc  
C/O: Salvador Mendoza  
Re: 034.017.001; Phare II and HBMS Horticulture Complex

Date of Sampling: 10-21-2020  
Date of Receipt: 10-23-2020 and 10-28-2020  
Date of Report: 10-28-2020

**ASBESTOS PLM REPORT**

**Location: 1021-30, White roof caulking-headhouse parapet cap**

Lab ID-Version‡: 11954174-1

Sample Layers	Asbestos Content
White Caulk	ND
<b>Sample Composite Homogeneity:</b> Good	

**Location: 1021-31, White roof caulking-class lab parapet cap**

Lab ID-Version‡: 11954175-1

Sample Layers	Asbestos Content
White Caulk	ND
<b>Sample Composite Homogeneity:</b> Good	

**Location: 1021-32, Gray roof caulking-headhouse breezeway skylight**

Lab ID-Version‡: 11954176-1

Sample Layers	Asbestos Content
Gray Caulk	ND
<b>Sample Composite Homogeneity:</b> Good	

**Location: 1021-33, Gray roof caulking-headhouse breezeway skylight**

Lab ID-Version‡: 11954177-1

Sample Layers	Asbestos Content
Gray Caulk	ND
<b>Sample Composite Homogeneity:</b> Good	

The test report shall not be reproduced except in full, without written approval of the laboratory. The report must not be used by the client to claim product certification, approval, or endorsement by any agency of the federal government. Eurofins EMLab P&K reserves the right to dispose of all samples after a period of thirty (30) days, according to all state and federal guidelines, unless otherwise specified.

Inhomogeneous samples are separated into homogeneous subsamples and analyzed individually. ND means no fibers were detected. When detected, the minimum detection and reporting limit is less than 1% unless point counting is performed. Floor tile samples may contain large amounts of interference material and it is recommended that the sample be analyzed by gravimetric point count analysis to lower the detection limit and to aid in asbestos identification.

‡ A "Version" indicated by -"x" after the Lab ID# with a value greater than 1 indicates a sample with amended data. The revision number is reflected by the value of "x".

Client: Terraphase Engineering Inc  
 C/O: Salvador Mendoza  
 Re: 034.017.001; Phare II and HBMS Horticulture  
 Complex

Date of Sampling: 10-21-2020  
 Date of Receipt: 10-23-2020 and 10-28-2020  
 Date of Report: 10-28-2020

**ASBESTOS PLM REPORT****Location: 1021-34, Gray roof mastic-headhouse HVAC curb**

Lab ID-Version‡: 11954178-1

Sample Layers	Asbestos Content
Gray Mastic	ND
<b>Composite Non-Asbestos Content:</b>	5% Cellulose
<b>Sample Composite Homogeneity:</b>	Good

**Location: 1021-35, Gray roof mastic-headhouse hatch**

Lab ID-Version‡: 11954179-1

Sample Layers	Asbestos Content
Gray Mastic	ND
<b>Composite Non-Asbestos Content:</b>	5% Cellulose
<b>Sample Composite Homogeneity:</b>	Good

**Location: 1021-36, Gray roof mastic-class lab HVAC curb**

Lab ID-Version‡: 11954180-1

Sample Layers	Asbestos Content
Gray Mastic	ND
<b>Composite Non-Asbestos Content:</b>	5% Cellulose
<b>Sample Composite Homogeneity:</b>	Good

**Location: 1021-37, White drywall/white joint compound-classrooms H101**

Lab ID-Version‡: 11954181-1

Sample Layers	Asbestos Content
White Joint Compound	ND
White Drywall with Brown Paper	ND
<b>Composite Non-Asbestos Content:</b>	10% Cellulose 2% Glass Fibers
<b>Sample Composite Homogeneity:</b>	Moderate

The test report shall not be reproduced except in full, without written approval of the laboratory. The report must not be used by the client to claim product certification, approval, or endorsement by any agency of the federal government. Eurofins EMLab P&K reserves the right to dispose of all samples after a period of thirty (30) days, according to all state and federal guidelines, unless otherwise specified.

Inhomogeneous samples are separated into homogeneous subsamples and analyzed individually. ND means no fibers were detected. When detected, the minimum detection and reporting limit is less than 1% unless point counting is performed. Floor tile samples may contain large amounts of interference material and it is recommended that the sample be analyzed by gravimetric point count analysis to lower the detection limit and to aid in asbestos identification.

‡ A "Version" indicated by "-x" after the Lab ID# with a value greater than 1 indicates a sample with amended data. The revision number is reflected by the value of "x".

Client: Terraphase Engineering Inc  
 C/O: Salvador Mendoza  
 Re: 034.017.001; Phare II and HBMS Horticulture  
 Complex

Date of Sampling: 10-21-2020  
 Date of Receipt: 10-23-2020 and 10-28-2020  
 Date of Report: 10-28-2020

**ASBESTOS PLM REPORT****Location: 1021-38, Beige 12x12 vinyl floor tile/blackmastic-classrooms H101**

Lab ID-Version‡: 11954182-1

Sample Layers	Asbestos Content
Beige Floor Tile	ND
Black Mastic	3% Chrysotile
<b>Sample Composite Homogeneity:</b> Moderate	

**Location: 1021-39, Beige wall paneling (painted green)-classrooms H101**

Lab ID-Version‡: 11954183-1

Sample Layers	Asbestos Content
Beige Fibrous Material	ND
<b>Composite Non-Asbestos Content:</b>	90% Cellulose
<b>Sample Composite Homogeneity:</b> Good	

**Location: 1021-40, Brown covebase mastic-classrooms H101**

Lab ID-Version‡: 11954184-1

Sample Layers	Asbestos Content
Brown Baseboard	ND
Dark Brown Mastic	ND
<b>Sample Composite Homogeneity:</b> Moderate	

**Location: 1021-41, 4'x4' ceiling panel (fiberglass)-classrooms H101**

Lab ID-Version‡: 11954185-1

Sample Layers	Asbestos Content
Yellow Insulation	ND
<b>Composite Non-Asbestos Content:</b>	95% Glass Fibers
<b>Sample Composite Homogeneity:</b> Good	

The test report shall not be reproduced except in full, without written approval of the laboratory. The report must not be used by the client to claim product certification, approval, or endorsement by any agency of the federal government. Eurofins EMLab P&K reserves the right to dispose of all samples after a period of thirty (30) days, according to all state and federal guidelines, unless otherwise specified.

Inhomogeneous samples are separated into homogeneous subsamples and analyzed individually. ND means no fibers were detected. When detected, the minimum detection and reporting limit is less than 1% unless point counting is performed. Floor tile samples may contain large amounts of interference material and it is recommended that the sample be analyzed by gravimetric point count analysis to lower the detection limit and to aid in asbestos identification.

‡ A "Version" indicated by "-x" after the Lab ID# with a value greater than 1 indicates a sample with amended data. The revision number is reflected by the value of "x".

Client: Terraphase Engineering Inc  
 C/O: Salvador Mendoza  
 Re: 034.017.001; Phare II and HBMS Horticulture Complex

Date of Sampling: 10-21-2020  
 Date of Receipt: 10-23-2020 and 10-28-2020  
 Date of Report: 10-28-2020

**ASBESTOS PLM REPORT**

**Location: 1021-42, Grey wrapping/White 4" diameter TSI-boiler room**

Lab ID-Version‡: 11954186-1

Sample Layers	Asbestos Content
Yellow Insulation	ND
White Wrap	ND
<b>Composite Non-Asbestos Content:</b>	85% Glass Fibers 5% Cellulose
<b>Sample Composite Homogeneity:</b>	Moderate

**Location: 1021-43, Grey concrete columns-Lath house eastern half**

Lab ID-Version‡: 11954187-1

Sample Layers	Asbestos Content
Gray Concrete	ND
<b>Sample Composite Homogeneity:</b>	Good

**Location: 1021-44, Grey concrete columns-Lath house western half**

Lab ID-Version‡: 11954188-1

Sample Layers	Asbestos Content
Gray Concrete	ND
<b>Sample Composite Homogeneity:</b>	Good

**Location: 1021-45, Clear wallpaper adhesive-RRB room H1-02**

Lab ID-Version‡: 11954189-1

Sample Layers	Asbestos Content
Transparent Adhesive	ND
<b>Sample Composite Homogeneity:</b>	Good

The test report shall not be reproduced except in full, without written approval of the laboratory. The report must not be used by the client to claim product certification, approval, or endorsement by any agency of the federal government. Eurofins EMLab P&K reserves the right to dispose of all samples after a period of thirty (30) days, according to all state and federal guidelines, unless otherwise specified.

Inhomogeneous samples are separated into homogeneous subsamples and analyzed individually. ND means no fibers were detected. When detected, the minimum detection and reporting limit is less than 1% unless point counting is performed. Floor tile samples may contain large amounts of interference material and it is recommended that the sample be analyzed by gravimetric point count analysis to lower the detection limit and to aid in asbestos identification.

‡ A "Version" indicated by "-x" after the Lab ID# with a value greater than 1 indicates a sample with amended data. The revision number is reflected by the value of "x".

Client: Terraphase Engineering Inc  
 C/O: Salvador Mendoza  
 Re: 034.017.001; Phare II and HBMS Horticulture  
 Complex

Date of Sampling: 10-21-2020  
 Date of Receipt: 10-23-2020 and 10-28-2020  
 Date of Report: 10-28-2020

**ASBESTOS PLM REPORT****Location: 1021-46, Clear wallpaper adhesive-RRB room H1-02**

Lab ID-Version‡: 11954190-1

Sample Layers	Asbestos Content
Transparent Adhesive	ND
<b>Sample Composite Homogeneity:</b> Good	

**Location: 1021-47, White 2x4 ceiling tile-RRB room H1-02**

Lab ID-Version‡: 11954191-1

Sample Layers	Asbestos Content
White Ceiling Tile	ND
<b>Composite Non-Asbestos Content:</b>	95% Glass Fibers
<b>Sample Composite Homogeneity:</b> Good	

**Location: 1021-48, White 2x4 ceiling tile-RRB room H1-02**

Lab ID-Version‡: 11954192-1

Sample Layers	Asbestos Content
White Ceiling Tile	ND
<b>Composite Non-Asbestos Content:</b>	95% Glass Fibers
<b>Sample Composite Homogeneity:</b> Good	

**Location: 1021-49, White 4x4 ceramic wall tile/white grout/clear adhesive-women's restroom**

Lab ID-Version‡: 11954193-1

Sample Layers	Asbestos Content
White Ceramic Tile	ND
White Grout	ND
Transparent Adhesive	ND
<b>Sample Composite Homogeneity:</b> Moderate	

The test report shall not be reproduced except in full, without written approval of the laboratory. The report must not be used by the client to claim product certification, approval, or endorsement by any agency of the federal government. Eurofins EMLab P&K reserves the right to dispose of all samples after a period of thirty (30) days, according to all state and federal guidelines, unless otherwise specified.

Inhomogeneous samples are separated into homogeneous subsamples and analyzed individually. ND means no fibers were detected. When detected, the minimum detection and reporting limit is less than 1% unless point counting is performed. Floor tile samples may contain large amounts of interference material and it is recommended that the sample be analyzed by gravimetric point count analysis to lower the detection limit and to aid in asbestos identification.

‡ A "Version" indicated by "-x" after the Lab ID# with a value greater than 1 indicates a sample with amended data. The revision number is reflected by the value of "x".

Client: Terraphase Engineering Inc  
 C/O: Salvador Mendoza  
 Re: 034.017.001; Phare II and HBMS Horticulture  
 Complex

Date of Sampling: 10-21-2020  
 Date of Receipt: 10-23-2020 and 10-28-2020  
 Date of Report: 10-28-2020

**ASBESTOS PLM REPORT**

**Location: 1021-50, White 4x4 ceramic wall tile/white grout/clear adhesive-men's  
 restroom**

Lab ID-Version‡: 11954194-1

Sample Layers	Asbestos Content
White Ceramic Tile	ND
White Grout	ND
Transparent Adhesive	ND
<b>Sample Composite Homogeneity:</b> Moderate	

**Location: 1021-51, Brown 1"x1" ceramic floor tile/blk grout/white mortar-women's  
 restroom**

Lab ID-Version‡: 11954195-1

Sample Layers	Asbestos Content
Brown Ceramic Tile	ND
Black Grout	ND
White Mortar	ND
<b>Sample Composite Homogeneity:</b> Moderate	

**Location: 1021-52, Brown 1"x1" ceramic floor tile/blk grout/white mortar-men's  
 restroom**

Lab ID-Version‡: 11954196-1

Sample Layers	Asbestos Content
Brown Ceramic Tile	ND
Black Grout	ND
White Mortar	ND
<b>Sample Composite Homogeneity:</b> Moderate	

The test report shall not be reproduced except in full, without written approval of the laboratory. The report must not be used by the client to claim product certification, approval, or endorsement by any agency of the federal government. Eurofins EMLab P&K reserves the right to dispose of all samples after a period of thirty (30) days, according to all state and federal guidelines, unless otherwise specified.

Inhomogeneous samples are separated into homogeneous subsamples and analyzed individually. ND means no fibers were detected. When detected, the minimum detection and reporting limit is less than 1% unless point counting is performed. Floor tile samples may contain large amounts of interference material and it is recommended that the sample be analyzed by gravimetric point count analysis to lower the detection limit and to aid in asbestos identification.

‡ A "Version" indicated by "-x" after the Lab ID# with a value greater than 1 indicates a sample with amended data. The revision number is reflected by the value of "x".

Client: Terraphase Engineering Inc  
 C/O: Salvador Mendoza  
 Re: 034.017.001; Phare II and HBMS Horticulture  
 Complex

Date of Sampling: 10-21-2020  
 Date of Receipt: 10-23-2020 and 10-28-2020  
 Date of Report: 10-28-2020

**ASBESTOS PLM REPORT**

**Location: 1021-53, White drywall/white joint compound-women's restroom**

Lab ID-Version‡: 11954197-1

Sample Layers	Asbestos Content
White Texture	ND
Cream Tape	ND
White Joint Compound	ND
Brown Drywall with Brown Paper	ND
<b>Composite Non-Asbestos Content:</b>	15% Cellulose 2% Glass Fibers
<b>Sample Composite Homogeneity:</b>	Poor

The test report shall not be reproduced except in full, without written approval of the laboratory. The report must not be used by the client to claim product certification, approval, or endorsement by any agency of the federal government. Eurofins EMLab P&K reserves the right to dispose of all samples after a period of thirty (30) days, according to all state and federal guidelines, unless otherwise specified.

Inhomogeneous samples are separated into homogeneous subsamples and analyzed individually. ND means no fibers were detected. When detected, the minimum detection and reporting limit is less than 1% unless point counting is performed. Floor tile samples may contain large amounts of interference material and it is recommended that the sample be analyzed by gravimetric point count analysis to lower the detection limit and to aid in asbestos identification.

‡ A "Version" indicated by "-x" after the Lab ID# with a value greater than 1 indicates a sample with amended data. The revision number is reflected by the value of "x".

Client: Terraphase Engineering Inc  
C/O: Salvador Mendoza  
Re: 034.017.001; Phare II and HBMS Horticulture Complex

Date of Sampling: 10-21-2020  
Date of Receipt: 10-23-2020 and 10-28-2020  
Date of Report: 10-28-2020

**ASBESTOS PLM REPORT**

**Location: 1021-54, White drywall/white joint compound-men's restroom**

Lab ID-Version‡: 11954198-1

Sample Layers	Asbestos Content
White Texture	ND
Cream Tape	ND
White Joint Compound	ND
White Drywall with Brown Paper	ND
<b>Composite Non-Asbestos Content:</b>	15% Cellulose
<b>Sample Composite Homogeneity:</b>	Poor

**Location: 1021-55, Brown CMU/grey grout-boiler room structure**

Lab ID-Version‡: 11954199-1

Sample Layers	Asbestos Content
Brown Cementitious Material	ND
<b>Sample Composite Homogeneity:</b>	Good

**Location: 1021-56, Brown CMU/grey grout-boiler room structure**

Lab ID-Version‡: 11954200-1

Sample Layers	Asbestos Content
Brown Cementitious Material	ND
Gray Grout	ND
<b>Sample Composite Homogeneity:</b>	Moderate

**Location: 1021-57, Brown CMU/grey grout-greenhouse E corner**

Lab ID-Version‡: 11954201-1

Sample Layers	Asbestos Content
Brown Cementitious Material	ND
Gray Grout	ND
<b>Sample Composite Homogeneity:</b>	Moderate

The test report shall not be reproduced except in full, without written approval of the laboratory. The report must not be used by the client to claim product certification, approval, or endorsement by any agency of the federal government. Eurofins EMLab P&K reserves the right to dispose of all samples after a period of thirty (30) days, according to all state and federal guidelines, unless otherwise specified.

Inhomogeneous samples are separated into homogeneous subsamples and analyzed individually. ND means no fibers were detected. When detected, the minimum detection and reporting limit is less than 1% unless point counting is performed. Floor tile samples may contain large amounts of interference material and it is recommended that the sample be analyzed by gravimetric point count analysis to lower the detection limit and to aid in asbestos identification.

‡ A "Version" indicated by -"x" after the Lab ID# with a value greater than 1 indicates a sample with amended data. The revision number is reflected by the value of "x".



Client: Terraphase Engineering Inc  
 C/O: Salvador Mendoza  
 Re: 034.017.001; Phare II and HBMS Horticulture  
 Complex

Date of Sampling: 10-21-2020  
 Date of Receipt: 10-23-2020 and 10-28-2020  
 Date of Report: 10-28-2020

**ASBESTOS PLM REPORT****Location: 1021-58, Brown CMU/grey grout-greenhouse NW corner**

Lab ID-Version‡: 11954202-1

Sample Layers	Asbestos Content
Brown Cementitious Material	ND
Gray Grout	ND
<b>Sample Composite Homogeneity:</b> Moderate	

**Location: 1021-59, Grey cementitious wall board-greenhouse southern**

Lab ID-Version‡: 11954203-1

Sample Layers	Asbestos Content
Gray Cementitious Material	12% Chrysotile 2% Crocidolite
<b>Sample Composite Homogeneity:</b> Good	

**Location: 1021-60, Grey cementitious wall board-greenhouse northern**

Lab ID-Version‡: 11954204-1

Sample Layers	Asbestos Content
Gray Cementitious Material	12% Chrysotile 2% Crocidolite
<b>Sample Composite Homogeneity:</b> Good	

**Location: 1021-41(HA16), Grey wrapping/White 4" diameter TSI-greenhouse west**

Lab ID-Version‡: 11965590-1

Sample Layers	Asbestos Content
Yellow Insulation	ND
White Wrap	ND
<b>Composite Non-Asbestos Content:</b>	85% Glass Fibers 5% Cellulose
<b>Sample Composite Homogeneity:</b> Moderate	

The test report shall not be reproduced except in full, without written approval of the laboratory. The report must not be used by the client to claim product certification, approval, or endorsement by any agency of the federal government. Eurofins EMLab P&K reserves the right to dispose of all samples after a period of thirty (30) days, according to all state and federal guidelines, unless otherwise specified.

Inhomogeneous samples are separated into homogeneous subsamples and analyzed individually. ND means no fibers were detected. When detected, the minimum detection and reporting limit is less than 1% unless point counting is performed. Floor tile samples may contain large amounts of interference material and it is recommended that the sample be analyzed by gravimetric point count analysis to lower the detection limit and to aid in asbestos identification.

‡ A "Version" indicated by "-x" after the Lab ID# with a value greater than 1 indicates a sample with amended data. The revision number is reflected by the value of "x".



Asbestos Bulk Sampling Data Form and Chain of Custody

Project No.: 034.017.001  
 Project Name: Phare II and HBMS Horticulture Complex  
 Sample By: SM and MS

Date of Sampling: 21-Oct-20 Client: Peralta  
 Project Location: Merritt College  
 Activity:  Renovation  Demolition  Other

Results to: [sal.mendoza@terrphase.com](mailto:sal.mendoza@terrphase.com) Turnaround Time:  Same Day  1 Day  2 Days  3 Days  5 Days  Other Due Date and Time:


Notes: Analysis:  PLM  Point Count  400  1,000  CARB-435  TEM  Other:

HA#	Sample ID	Homogeneous Material Description (incl. color, texture, phase of construction)	Sample Location	Condition (good, fair, poor)	Quant. in SF	Friable Cat. I. Cat. II
1	1021-01	White drywall/white joint compound	Headhouse	Good	NA	NA
1	1021-02	White drywall/white joint compound	Headhouse	Good	NA	NA
1	1021-03	White drywall/white joint compound	Class Lab	Good	NA	NA
1	1021-04	White drywall/white joint compound	Class Lab	Good	NA	NA
1	1021-37	White drywall/white joint compound	Classrooms H101	Good	NA	NA
2	1021-05	Black Sink Undercoating	Headhouse	Good	NA	NA
2	1021-06	Black Sink Undercoating	Class Lab	Good	NA	NA
3	1021-07	Brown Covebase Mastic	Headhouse	Good	NA	NA
3	1021-08	Brown Covebase Mastic	Private Restroom	Good	NA	NA
3	1021-09	Brown Covebase Mastic	Class Lab	Good	NA	NA
3	1021-40	Brown Covebase Mastic	Classrooms H101	Good	NA	NA
4	1021-10	Tan pebble vinyl sheet flooring/beige mastic	Private Restroom	Good	NA	NA
4	1021-11	Tan pebble vinyl sheet flooring/beige mastic	Private Restroom	Good	NA	NA
5	1021-12	Beige Wall Paneling	Headhouse	Good	NA	NA
5	1021-13	Beige Wall Paneling	Class Lab	Good	NA	NA
5	1021-39	Beige Wall Paneling (painted green)	Classrooms H101	Good	NA	NA
6	1021-14	White 1x1 Ceiling Tile/brown adhesive	Office	Good	NA	NA
6	1021-15	White 1x1 Ceiling Tile/brown adhesive	Private Restroom	Good	NA	NA



7	1021-16	Beige 12x12 Vinyl Floor Tile/black mastic	Janitor	Good	NA	NA
7	1021-17	Beige 12x12 Vinyl Floor Tile/black mastic	Office	Good	NA	NA
7	1021-38	Beige 12x12 Vinyl Floor Tile/black mastic	Classrooms H101	Good	NA	NA
8	1021-18	Fiberglass piping insulation jacket	Headhouse	Good	NA	NA
8	1021-19	Fiberglass piping insulation jacket	Headhouse	Good	NA	NA
9	1021-20	4'x4' ceiling panel (fiberglass)	Headhouse	Good	NA	NA
9	1021-21	4'x4' ceiling panel (fiberglass)	Class Lab	Good	NA	NA
9	1021-41	4'x4' ceiling panel (fiberglass)	Classrooms H101	Good	NA	NA
10	1021-22	Felt Moisture Barrier	Headhouse	Good	NA	NA
10	1021-23	Felt Moisture Barrier	Class Lab	Good	NA	NA
11	1021-24	Built-up Roofing (tar & gravel)	Headhouse	Good	NA	NA
11	1021-25	Built-up Roofing (tar & gravel)	Class Lab	Good	NA	NA
11	1021-26	Built-up Roofing (tar & gravel)	Boiler Room	Good	NA	NA
11	1021-27	Built-up Roofing (tar & gravel)	Classrooms H101	Good	NA	NA
12	1021-28	Roof Flashing	Headhouse HVAC Curb	Good	NA	NA
12	1021-29	Roof Flashing	Class Lab HVAC Curb	Good	NA	NA
13	1021-30	White Roof Caulking	Headhouse Parapet Cap	Good	NA	NA
13	1021-31	White Roof Caulking	Class Lab Parapet Cap	Good	NA	NA
14	1021-32	Gray Roof Caulking	Headhouse Breezeway Skylight	Good	NA	NA
14	1021-33	Gray Roof Caulking	Headhouse Breezeway Skylight	Good	NA	NA
15	1021-34	Gray Roof Mastic	Headhouse HVAC Curb	Good	NA	NA
15	1021-35	Gray Roof Mastic	Headhouse Hatch	Good	NA	NA
15	1021-36	Gray Roof Mastic	Class Lab HVAC Curb	Good	NA	NA
16	1021-41	Grey wrapping/White 4" diameter TSI	Greenhouse west	Good	NA	NA
16	1021-42	Grey wrapping/White 4" diameter TSI	Boiler Room	Good	NA	NA
17	1021-43	Grey concrete Columns	Lath house Eastern half	Good	NA	NA
17	1021-44	Grey concrete Columns	Lath house Western half	Good	NA	NA
18	1021-45	Clear wallpaper Adhesive	RRB room H1-02	Good	NA	NA
18	1021-46	Clear wallpaper Adhesive	RRB room H1-02	Good	NA	NA



19	1021-47	White 2x4 ceiling tile	RRB room H1-02	Good	NA	NA
19	1021-48	White 2x4 ceiling tile	RRB room H1-02	Good	NA	NA
20	1021-49	White 4x4 ceramic wall tile/white grout/clear adhesive	Women's restroom	Good	NA	NA
20	1021-50	White 4x4 ceramic wall tile/white grout/clear adhesive	Men's restroom	Good	NA	NA
21	1021-51	Brown 1"x1" ceramic floor tile/blk grout/white mortar	Women's restroom	Good	NA	NA
21	1021-52	Brown 1"x1" ceramic floor tile/blk grout/white mortar	Men's restroom	Good	NA	NA
22	1021-53	White drywall/white joint compound	Women's restroom	Good	NA	NA
22	1021-54	White drywall/white joint compound	Men's restroom	Good	NA	NA
23	1021-55	Brown CMU/grey grout	Boiler Room Structure	Good	NA	NA
23	1021-56	Brown CMU/grey grout	Boiler Room Structure	Good	NA	NA
24	1021-57	Brown CMU/Grey Grout	Greenhouse E corner	Good	NA	NA
24	1021-58	Brown CMU/Grey Grout	Greenhouse NW corner	Good	NA	NA
25	1021-59	Grey Cementitious Wall Board	Greenhouse southern	Good	NA	NA
25	1021-60	Grey Cementitious Wall Board	Greenhouse northern	Good	NA	NA
<p>DW = Drywall JC = Joint Compound WT = Wall Texture VFT = Vinyl Floor Tile VSF = Vinyl Sheet Flooring BB = Baseboard BBM = Baseboard Mastic CM = Carpet Mastic            ACT = Acoustic Ceiling Tile ACS = Sprayed-on Acoustical Ceiling Material FP = Fireproofing PI = Pipe Insulation PFI = Pipe fitting insulation WP = Plaster CP = Ceiling Plaster ES = Exterior Stucco</p>						
Relinquished By:		Date & Time:	Received By: 	Date & Time: 10/23/2020 9:29	<input type="checkbox"/> Yes <input type="checkbox"/> No Condition Acceptable:	
Relinquished By:		Date & Time:	Received By:	Date & Time:	<input type="checkbox"/> Yes <input type="checkbox"/> No Condition Acceptable:	



# EMSL Analytical, Inc.

464 McCormick Street San Leandro, CA 94577

Tel/Fax: (510) 895-3675 / (510) 895-3680

<http://www.EMSL.com> / [sanleandrolab@emsl.com](mailto:sanleandrolab@emsl.com)


<b>EMSL Order:</b> 092019525
<b>Customer ID:</b> TPHS42
<b>Customer PO:</b>
<b>Project ID:</b>

<b>Attention:</b> Sal Mendoza Terraphase Engineering, Inc. 1415 L STREET, SUITE 100 SACRAMENTO, CA 95814	<b>Phone:</b> (916) 594-8499 <b>Fax:</b> <b>Received Date:</b> 11/09/2020 1:30 PM <b>Analysis Date:</b> 11/10/2020 <b>Collected Date:</b> 11/09/2020
<b>Project:</b>	

## Test Report: Asbestos Analysis of Bulk Materials via EPA 600/R-93/116 Method using Polarized Light Microscopy

Sample	Description	Appearance	Non-Asbestos		Asbestos
			% Fibrous	% Non-Fibrous	% Type
1109-61 <i>092019525-0001</i>	MOISTURE BARRIER - BREEZEWAY SOUTH	Black Fibrous Homogeneous	35% Cellulose	55% Matrix 10% Non-fibrous (Other)	None Detected
1109-62 <i>092019525-0002</i>	MOISTURE BARRIER - H105 SOUTH	Black Fibrous Homogeneous	35% Cellulose	55% Matrix 10% Non-fibrous (Other)	None Detected
1109-63 <i>092019525-0003</i>	MOISTURE BARRIER - HEADROOM NORTH	Black Fibrous Homogeneous	35% Cellulose	55% Matrix 10% Non-fibrous (Other)	None Detected
<i>Result includes a small amount of inseparable attached material</i>					
1109-64 <i>092019525-0004</i>	MOISTURE BARRIER - TOOL SHED NORTH	Black Fibrous Homogeneous		35% Ca Carbonate 55% Matrix 10% Non-fibrous (Other)	None Detected
1109-65 <i>092019525-0005</i>	MOISTURE BARRIER - TOOL SHED SOUTH	Black Fibrous Homogeneous	35% Cellulose	55% Matrix 10% Non-fibrous (Other)	None Detected
1109-66 <i>092019525-0006</i>	F/G SUBSTRATE - H101 SOUTH EXT	Tan Fibrous Homogeneous	30% Glass	20% Ca Carbonate 40% Matrix 10% Non-fibrous (Other)	None Detected
1109-67 <i>092019525-0007</i>	F/G SUBSTRATE - H101 NORTH EXT	Tan Fibrous Homogeneous	30% Glass	20% Ca Carbonate 40% Matrix 10% Non-fibrous (Other)	None Detected

Analyst(s)  
Erika Midkiff (7)



Cecilia Yu, Laboratory Manager  
or Other Approved Signatory

EMSL maintains liability limited to cost of analysis. Interpretation and use of test results are the responsibility of the client. This report relates only to the samples reported above, and may not be reproduced, except in full, without written approval by EMSL. EMSL bears no responsibility for sample collection activities or analytical method limitations. The report reflects the samples as received. Results are generated from the field sampling data (sampling volumes and areas, locations, etc.) provided by the client on the Chain of Custody. Samples are within quality control criteria and met method specifications unless otherwise noted. The above analyses were performed in general compliance with Appendix E to Subpart E of 40 CFR (previously EPA 600/M4-82-020 "Interim Method") but augmented with procedures outlined in the 1993 ("final") version of the method. This report must not be used by the client to claim product certification, approval, or endorsement by NVLAP, NIST or any agency of the federal government. Non-friable organically bound materials present a problem matrix and therefore EMSL recommends gravimetric reduction prior to analysis. Unless requested by the client, building materials manufactured with multiple layers (i.e. linoleum, wallboard, etc.) are reported as a single sample. Estimation of uncertainty is available on request.

Samples analyzed by EMSL Analytical, Inc San Leandro, CA NVLAP Lab Code 101048-3, WA C884

Initial report from: 11/10/2020 15:33:01



EMSL ANALYTICAL, INC.  
LABORATORY • PRODUCTS • TRAINING

# Asbestos Chain of Custody For California

EMSL Order Number (lab use only):

**092019525**

EMSL ANALYTICAL, INC.  
464 McCORMICK ST.  
SAN LEANDRO, CA 94577  
PHONE: (510) 895-3675  
FAX: (510) 895-3680

Company Name : <u>TERRAPHASE</u>		EMSL Customer ID:	
Street: <u>1415 L ST. Suite 100</u>		City: <u>Sacramento</u>	State or Province: <u>CA</u>
Zip/Postal Code: <u>95814</u>	Country: <u>USA</u>	Telephone #: <u>916-661-2484</u>	Fax #:
Report To (Name): <u>SAL MENDOZA</u>		Please Provide Results via: <input type="checkbox"/> Fax <input checked="" type="checkbox"/> Email	
email Address: <u>SAL.MENDOZA@TERRAPHASE.COM</u>		Purchase Order Number:	
Client Project ID:		EMSL Project ID (internal use only):	
State or Province Collected: <u>CA</u>			
EMSL Bill-to: <input type="checkbox"/> Same <input type="checkbox"/> Different: If Bill-to is different, note instructions in comments below. <i>Third-party billing requires written authorization.</i>			

**Turnaround Time (TAT) Options Please Check**

- 3 Hr<sup>1</sup>  
  4-4.5Hr<sup>1</sup> AHERA Only  
  6 Hr<sup>1</sup>  
  24 Hr  
  32 Hr<sup>2</sup>  
  48 Hr  
  72 Hr  
  96 HR  
  1 Week  
  2 Week

<sup>1</sup>Premium Service Charge applies for 3 Hour TEM AHERA or EPA Level II TAT - you will be asked to sign an authorization form. TEM Air 3 -6 Hour, please call ahead to schedule  
<sup>2</sup>32 Hour TAT available for select tests only; samples must be submitted by 11:30am.

<b>PCM - Air</b> <input type="checkbox"/> NIOSH 7400 <input type="checkbox"/> w/ OSHA 8hr. TWA	<b>TEM - Air</b> <input type="checkbox"/> AHERA 40 CFR, Part 763 <input type="checkbox"/> CARB Modified AHERA <input type="checkbox"/> EPA Level II <input type="checkbox"/> NIOSH 7402 <input type="checkbox"/> ISO 10312	<b>Soil/Rock/Vermiculite (Reporting Limit)</b> <input type="checkbox"/> PLM CARB 435 - A (<0.25%)* <input type="checkbox"/> TEM CARB 435 - B (<0.1%) <input type="checkbox"/> TEM CARB 435 - C (<0.01%)* <input type="checkbox"/> TEM Qualitative via Filtration Prep <input type="checkbox"/> TEM Qualitative via Drop Mount Prep <input type="checkbox"/> PLM EPA 600/R-93/116 with Milling Prep (<0.25%) <input type="checkbox"/> PLM EPA 600/R-93/116 with Milling Prep (<0.1%) <input type="checkbox"/> TEM EPA 600/R-93/116 with Milling Prep (<0.1%)*
<b>PLM - Bulk (Reporting Limit)</b> <input checked="" type="checkbox"/> PLM EPA 600/R-93/116 (<1%) <input type="checkbox"/> PLM EPA NOB (<1%) <input type="checkbox"/> 400 Point Count (<0.25%) <input type="checkbox"/> 400 Point Count with Gravimetric Reduction (<0.25%) <input type="checkbox"/> 1000 Point Count (<0.1%) <input type="checkbox"/> 1000 Point Count with Gravimetric Reduction (<0.1%) <input type="checkbox"/> NIOSH 9002 (<1%)	<b>TEM - Bulk</b> <input type="checkbox"/> TEM EPA NOB <input type="checkbox"/> TEM EPA 600/R-93/116 with Milling Prep (<0.1%)*	
<b>TEM - Water: EPA 100.2</b> Fibers >10µm <input type="checkbox"/> Waste <input type="checkbox"/> Drinking All Fiber Sizes <input type="checkbox"/> Waste <input type="checkbox"/> Drinking	<b>TEM - Dust</b> <input type="checkbox"/> Microvac - ASTM D 5755 <input type="checkbox"/> Wipe - ASTM D6480 <input type="checkbox"/> Carpet Sonication (EPA 600/J-93/167)	<b>Other test (please specify)</b>

\* Lower reporting limits available upon request

Stop At First Positive (clearly identify homogenous areas below)  
 Filter Pore Size (Air Samples):  0.8µm  0.45µm

Sampler's Name: Mike Schoopinger  
 Sampler's Signature:

Sample #	Sample Description/ Location	Volume, Area, or Homogenous Area	Date and Time Sampled

Client Sample # (s): 1109-61 - 1109-67      Total # of Samples: 7

Relinquished by (Client):      Date: 11/9/20      Time: 1345

Received by (Lab): DB      Date: 11/9/2020      Time: 1:30 PM

Comments/Special Instructions:



Report for:

**Salvador Mendoza**  
**Terraphase Engineering Inc**  
1404 Franklin Street  
Suite 600  
Oakland, CA 94612

---

Regarding: Project: 034.017.001; Phase II and HBMS Horticulture Complex  
EML ID: 2508713

Approved by:

Dates of Analysis:

Lead - Flame AA: 10-26-2020



Technical Manager  
Andrew Ikeda

Service SOPs: Lead - Flame AA (EM-BC-S-8443)  
AIHA-LAP, LLC accredited service, Lab ID #178697

---

All samples were received in acceptable condition unless noted in the Report Comments portion in the body of the report. Due to the nature of the analyses performed, field blank correction of results is not applied. The results relate only to the samples as received. Sample size, as it relates to Wipe samples only, is supplied by the client.

Eurofins EMLab P&K ("the Company") shall have no liability to the client or the client's customer with respect to decisions or recommendations made, actions taken or courses of conduct implemented by either the client or the client's customer as a result of or based upon the Test Results. In no event shall the Company be liable to the client with respect to the Test Results except for the Company's own willful misconduct or gross negligence nor shall the Company be liable for incidental or consequential damages or lost profits or revenues to the fullest extent such liability may be disclaimed by law, even if the Company has been advised of the possibility of such damages, lost profits or lost revenues. In no event shall the Company's liability with respect to the Test Results exceed the amount paid to the Company by the client therefor.

Eurofins EMLab P&K's LabServe® reporting system includes automated fail-safes to ensure that all AIHA-LAP, LLC quality requirements are met and notifications are added to reports when any quality steps remain pending.



Client: Terraphase Engineering Inc  
 C/O: Salvador Mendoza  
 Re: 034.017.001; Phase II and HBMS Horticulture  
 Complex

Date of Sampling: 10-21-2020  
 Date of Receipt: 10-23-2020  
 Date of Report: 10-28-2020

**LEAD: FLAME ATOMIC ABSORPTION SPECTROMETRY**

Location:	L-01: Women's restroom northeast corner - Wall	L-02: Restroom North ext wall - Wall	L-03: Headhouse H- 108 - Door Trim	L-04: Headhouse H- 108 - Door	L-05: Boiler Room H121F - Ceiling
Comments (see below)	None	None	None	None	None
Lab ID-Version‡:	11956765-1	11956766-1	11956767-1	11956768-1	11956769-1
Analysis Date:	10/26/2020	10/26/2020	10/26/2020	10/26/2020	10/26/2020
Sample type	Paint Chip sample	Paint Chip sample	Paint Chip sample	Paint Chip sample	Paint Chip sample
Method*	NIOSH 7082 & EPA 7000B modified	NIOSH 7082 & EPA 7000B modified	NIOSH 7082 & EPA 7000B modified	NIOSH 7082 & EPA 7000B modified	NIOSH 7082 & EPA 7000B modified
† Method Reporting Limit	39 ppm	39 ppm	39 ppm	94 ppm	39 ppm
Sample size	0.2570 grams	0.2596 grams	0.2565 grams	0.1059 grams	0.2577 grams
§ Total Lead Result	< 39 ppm	45000 ppm	< 39 ppm	< 94 ppm	88 ppm

**Comments:**

Sample results have not been corrected for blank values.

Bulk samples are not covered under the AIHA-LAP, LLC service accreditation.

Wipe samples must meet ASTM E1792 criteria. Method Reporting Limits may not be valid for non-ASTM E1792 wipe samples.

\*Sample preparation and analytical methods are based upon NIOSH 7082 and EPA 7000B.

† The Method Reporting Limit is the minimum concentration of Lead that the laboratory can confidently detect in the sample.

§ Total Lead Result has been rounded to two significant figures to reflect analytical precision.

‡ A "Version" indicated by -"x" after the Lab ID# with a value greater than 1 indicates a sample with amended data. The revision number is reflected by the value of "x".



002508713

Project No.: 034.017.001 Date of Sampling: 21-Oct-20 Client: Peralta  
 Project Name: Phase II and HBMS Horticulture Complex Project Location: \_\_\_\_\_  
 Sample By: SM Activity:  Background  Removal  Clearance  Personal

Results to: sal.mendoza@terrphase.com Turnaround Time:  Same Day  1 Day  2 Days  3 Days  5 Days  Other Due Date and Time: \_\_\_\_\_  
 Notes: \_\_\_\_\_ Analysis:  Flame AA (Pb)  Other: \_\_\_\_\_

Sample No.	Sample Location	Component	Color	Substrate	Condition
L-01	Women's restroom northeast corner	Wall	White	Drywall	Intact
L-02	Restroom North ext wall	Wall	Brown	Metal	Intact
L-03	Headhouse H-108	Door Trim	Brown	Wood	Intact
L-04	Headhouse H-108	Door	Brown	Metal	Intact
L-05	Boiler Room H121F	Ceiling	White	Wood	Intact

Substrate: wood metal concrete plaster drywall brick

Relinquished By: <u>[Signature]</u>	Date & Time: <u>10/22/2020 15:15</u>	Received By: <u>[Signature]</u>	Date & Time: <u>10/23/2020 9:29</u>
Relinquished By:	Date & Time:	Received By:	Date & Time:
			Condition Acceptable: <input type="checkbox"/> Yes <input type="checkbox"/> No
			Condition Acceptable: <input type="checkbox"/> Yes <input type="checkbox"/> No

## ANALYTICAL REPORT

Eurofins Calscience Irvine  
17461 Derian Ave  
Suite 100  
Irvine, CA 92614-5817  
Tel: (949)261-1022

Laboratory Job ID: 440-273742-1  
Client Project/Site: 2508591

For:  
EMLab P&K  
1501 W. Knudsen Drive  
Phoenix, Arizona 85027

Attn: Angela Hetherington



Authorized for release by:  
10/30/2020 9:29:04 AM

Jennifer Moffatt, Project Manager I  
(949)260-3226  
[Jennifer.Moffatt@Eurofinset.com](mailto:Jennifer.Moffatt@Eurofinset.com)

### LINKS

Review your project  
results through  
**TotalAccess**

Have a Question?



Visit us at:

[www.eurofinsus.com/Env](http://www.eurofinsus.com/Env)

*The test results in this report meet all 2003 NELAC, 2009 TNI, and 2016 TNI requirements for accredited parameters, exceptions are noted in this report. This report may not be reproduced except in full, and with written approval from the laboratory. For questions please contact the Project Manager at the e-mail address or telephone number listed on this page.*

*This report has been electronically signed and authorized by the signatory. Electronic signature is intended to be the legally binding equivalent of a traditionally handwritten signature.*

*Results relate only to the items tested and the sample(s) as received by the laboratory.*



# Table of Contents

Cover Page . . . . .	1
Table of Contents . . . . .	2
Sample Summary . . . . .	3
Case Narrative . . . . .	4
Client Sample Results . . . . .	5
Method Summary . . . . .	6
Lab Chronicle . . . . .	7
QC Sample Results . . . . .	8
QC Association Summary . . . . .	10
Definitions/Glossary . . . . .	11
Certification Summary . . . . .	12
Chain of Custody . . . . .	13
Receipt Checklists . . . . .	14

# Sample Summary

Client: EMLab P&K  
Project/Site: 2508591

Job ID: 440-273742-1

---

Lab Sample ID	Client Sample ID	Matrix	Collected	Received	Asset ID
440-273742-1	P-01	Solid	10/21/20 00:01	10/23/20 17:00	

---

1

2

3

4

5

6

7

8

9

10

11

12

13

# Case Narrative

Client: EMLab P&K  
Project/Site: 2508591

Job ID: 440-273742-1

---

## Job ID: 440-273742-1

---

### Laboratory: Eurofins Calscience Irvine

#### Narrative

---

#### Job Narrative 440-273742-1

#### Comments

No additional comments.

#### Receipt

The sample was received on 10/23/2020 5:00 PM; the sample arrived in good condition. The temperature of the cooler at receipt was 22.0° C.

#### Receipt Exceptions

The following sample was received at the laboratory outside the required temperature criteria: P-01 (440-273742-1). There was no cooling media present in the cooler.

The following sample was received at the laboratory without a sample collection time documented on the chain of custody or on the container: P-01 (440-273742-1). A time of collection at 00:01am was applied by default.

#### GC Semi VOA

Method 8082: The following sample was diluted due to the nature of the sample matrix: P-01 (440-273742-1). Elevated reporting limits (RLs) are provided.

Method 8082: Surrogate recovery for the following samples were outside control limits: (440-273746-A-1-A), (440-273746-A-1-B MS) and (440-273746-A-1-C MSD). Evidence of matrix interference is present; therefore, re-extraction and/or re-analysis was not performed.

Method 8082: The native sample, matrix spike, and matrix spike duplicate (MS/MSD) associated with preparation batch 570-104671 and analytical batch 570-105295 were performed at the same dilution. Due to the matrix interference present in the spiked samples, the matrix spike / matrix spike duplicate (MS/MSD) for preparation batch 570-104671 and analytical batch 570-105295 could not be evaluated for accuracy and precision. The associated laboratory control sample (LCS) met acceptance criteria. The data have been reported and qualified.

No additional analytical or quality issues were noted, other than those described above or in the Definitions/Glossary page.

#### Organic Prep

Method 3540C: Due to the matrix, the initial volume(s) used for the following sample deviated from the standard procedure: P-01 (440-273742-1). The reporting limits (RLs) have been adjusted proportionately. The initial amount weighed was 1.0g instead of 20.0. Samples are special matrix and limited. See comments for details.

No additional analytical or quality issues were noted, other than those described above or in the Definitions/Glossary page.

# Client Sample Results

Client: EMLab P&K  
Project/Site: 2508591

Job ID: 440-273742-1

**Client Sample ID: P-01**

**Lab Sample ID: 440-273742-1**

**Date Collected: 10/21/20 00:01**

**Matrix: Solid**

**Date Received: 10/23/20 17:00**

**Method: 8082 - Polychlorinated Biphenyls (PCBs) by Gas Chromatography**

Analyte	Result	Qualifier	RL	Unit	D	Prepared	Analyzed	Dil Fac
Aroclor 1016	ND		8400	ug/Kg		10/26/20 14:01	10/28/20 17:35	10
Aroclor 1221	ND		8400	ug/Kg		10/26/20 14:01	10/28/20 17:35	10
Aroclor 1232	ND		8400	ug/Kg		10/26/20 14:01	10/28/20 17:35	10
Aroclor 1242	ND		8400	ug/Kg		10/26/20 14:01	10/28/20 17:35	10
Aroclor 1248	ND		8400	ug/Kg		10/26/20 14:01	10/28/20 17:35	10
Aroclor 1254	ND		8400	ug/Kg		10/26/20 14:01	10/28/20 17:35	10
Aroclor 1260	ND		8400	ug/Kg		10/26/20 14:01	10/28/20 17:35	10

Surrogate	%Recovery	Qualifier	Limits	Prepared	Analyzed	Dil Fac
DCB Decachlorobiphenyl (Surr)	63		20 - 155	10/26/20 14:01	10/28/20 17:35	10



# Method Summary

Client: EMLab P&K  
Project/Site: 2508591

Job ID: 440-273742-1

Method	Method Description	Protocol	Laboratory
8082	Polychlorinated Biphenyls (PCBs) by Gas Chromatography	SW846	ECL 1
3540C	Soxhlet Extraction	SW846	ECL 1

**Protocol References:**

SW846 = "Test Methods For Evaluating Solid Waste, Physical/Chemical Methods", Third Edition, November 1986 And Its Updates.

**Laboratory References:**

ECL 1 = Eurofins Calscience LLC Lincoln, 7440 Lincoln Way, Garden Grove, CA 92841, TEL (714)895-5494





# Lab Chronicle

Client: EMLab P&K  
Project/Site: 2508591

Job ID: 440-273742-1

**Client Sample ID: P-01**

**Lab Sample ID: 440-273742-1**

**Date Collected: 10/21/20 00:01**

**Matrix: Solid**

**Date Received: 10/23/20 17:00**

Prep Type	Batch Type	Batch Method	Run	Dil Factor	Initial Amount	Final Amount	Batch Number	Prepared or Analyzed	Analyst	Lab
Total/NA	Prep	3540C			1.19 g	10 mL	104671	10/26/20 14:01	USUL	ECL 1
Total/NA	Analysis	8082		10			105295	10/28/20 17:35	UHNN	ECL 1

**Laboratory References:**

ECL 1 = Eurofins Calscience LLC Lincoln, 7440 Lincoln Way, Garden Grove, CA 92841, TEL (714)895-5494

- 1
- 2
- 3
- 4
- 5
- 6
- 7
- 8
- 9
- 10
- 11
- 12
- 13

# QC Sample Results

Client: EMLab P&K  
Project/Site: 2508591

Job ID: 440-273742-1

## Method: 8082 - Polychlorinated Biphenyls (PCBs) by Gas Chromatography

**Lab Sample ID: MB 570-104671/1-A**  
**Matrix: Solid**  
**Analysis Batch: 105295**

**Client Sample ID: Method Blank**  
**Prep Type: Total/NA**  
**Prep Batch: 104671**

Analyte	MB MB		RL	Unit	D	Prepared	Analyzed	Dil Fac
	Result	Qualifier						
Aroclor 1016	ND		50	ug/Kg		10/26/20 14:01	10/28/20 16:23	1
Aroclor 1221	ND		50	ug/Kg		10/26/20 14:01	10/28/20 16:23	1
Aroclor 1232	ND		50	ug/Kg		10/26/20 14:01	10/28/20 16:23	1
Aroclor 1242	ND		50	ug/Kg		10/26/20 14:01	10/28/20 16:23	1
Aroclor 1248	ND		50	ug/Kg		10/26/20 14:01	10/28/20 16:23	1
Aroclor 1254	ND		50	ug/Kg		10/26/20 14:01	10/28/20 16:23	1
Aroclor 1260	ND		50	ug/Kg		10/26/20 14:01	10/28/20 16:23	1
Surrogate	MB MB		Limits			Prepared	Analyzed	Dil Fac
	%Recovery	Qualifier						
DCB Decachlorobiphenyl (Surr)	90		20 - 155			10/26/20 14:01	10/28/20 16:23	1

**Lab Sample ID: LCS 570-104671/2-A**  
**Matrix: Solid**  
**Analysis Batch: 105295**

**Client Sample ID: Lab Control Sample**  
**Prep Type: Total/NA**  
**Prep Batch: 104671**

Analyte	Spike Added	LCS Result	LCS Qualifier	Unit	D	%Rec	Limits	%Rec.
Aroclor 1260	100	112		ug/Kg		112	50 - 150	
Surrogate	LCS LCS		Limits			Prepared	Analyzed	Dil Fac
	%Recovery	Qualifier						
DCB Decachlorobiphenyl (Surr)	96		20 - 155					

**Lab Sample ID: LCSD 570-104671/3-A**  
**Matrix: Solid**  
**Analysis Batch: 105295**

**Client Sample ID: Lab Control Sample Dup**  
**Prep Type: Total/NA**  
**Prep Batch: 104671**

Analyte	Spike Added	LCSD Result	LCSD Qualifier	Unit	D	%Rec	Limits	%Rec.	RPD	
									RPD	Limit
Aroclor 1016	100	107		ug/Kg		107	50 - 142		1	30
Aroclor 1260	100	112		ug/Kg		112	50 - 150		0	30
Surrogate	LCSD LCSD		Limits			Prepared	Analyzed	Dil Fac		
	%Recovery	Qualifier								
DCB Decachlorobiphenyl (Surr)	95		20 - 155							

**Lab Sample ID: 440-273746-A-1-B MS**  
**Matrix: Solid**  
**Analysis Batch: 105295**

**Client Sample ID: Matrix Spike**  
**Prep Type: Total/NA**  
**Prep Batch: 104671**

Analyte	Sample Result	Sample Qualifier	Spike Added	MS Result	MS Qualifier	Unit	D	%Rec	Limits	%Rec.
Aroclor 1260	ND	F2	1720	2260000		ug/Kg		NC	20 - 180	
Surrogate	MS MS		Limits					Prepared	Analyzed	Dil Fac
	%Recovery	Qualifier								
DCB Decachlorobiphenyl (Surr)	306	X	20 - 155							



# QC Association Summary

Client: EMLab P&K  
Project/Site: 2508591

Job ID: 440-273742-1

## GC Semi VOA

### Prep Batch: 104671

Lab Sample ID	Client Sample ID	Prep Type	Matrix	Method	Prep Batch
440-273742-1	P-01	Total/NA	Solid	3540C	
MB 570-104671/1-A	Method Blank	Total/NA	Solid	3540C	
LCS 570-104671/2-A	Lab Control Sample	Total/NA	Solid	3540C	
LCSD 570-104671/3-A	Lab Control Sample Dup	Total/NA	Solid	3540C	
440-273746-A-1-B MS	Matrix Spike	Total/NA	Solid	3540C	
440-273746-A-1-C MSD	Matrix Spike Duplicate	Total/NA	Solid	3540C	

### Analysis Batch: 105295

Lab Sample ID	Client Sample ID	Prep Type	Matrix	Method	Prep Batch
440-273742-1	P-01	Total/NA	Solid	8082	104671
MB 570-104671/1-A	Method Blank	Total/NA	Solid	8082	104671
LCS 570-104671/2-A	Lab Control Sample	Total/NA	Solid	8082	104671
LCSD 570-104671/3-A	Lab Control Sample Dup	Total/NA	Solid	8082	104671
440-273746-A-1-B MS	Matrix Spike	Total/NA	Solid	8082	104671
440-273746-A-1-C MSD	Matrix Spike Duplicate	Total/NA	Solid	8082	104671

# Definitions/Glossary

Client: EMLab P&K  
Project/Site: 2508591

Job ID: 440-273742-1

## Qualifiers

### GC Semi VOA

Qualifier	Qualifier Description
F2	MS/MSD RPD exceeds control limits
X	Surrogate recovery exceeds control limits

## Glossary

Abbreviation	These commonly used abbreviations may or may not be present in this report.
α	Listed under the "D" column to designate that the result is reported on a dry weight basis
%R	Percent Recovery
CFL	Contains Free Liquid
CFU	Colony Forming Unit
CNF	Contains No Free Liquid
DER	Duplicate Error Ratio (normalized absolute difference)
Dil Fac	Dilution Factor
DL	Detection Limit (DoD/DOE)
DL, RA, RE, IN	Indicates a Dilution, Re-analysis, Re-extraction, or additional Initial metals/anion analysis of the sample
DLC	Decision Level Concentration (Radiochemistry)
EDL	Estimated Detection Limit (Dioxin)
LOD	Limit of Detection (DoD/DOE)
LOQ	Limit of Quantitation (DoD/DOE)
MCL	EPA recommended "Maximum Contaminant Level"
MDA	Minimum Detectable Activity (Radiochemistry)
MDC	Minimum Detectable Concentration (Radiochemistry)
MDL	Method Detection Limit
ML	Minimum Level (Dioxin)
MPN	Most Probable Number
MQL	Method Quantitation Limit
NC	Not Calculated
ND	Not Detected at the reporting limit (or MDL or EDL if shown)
NEG	Negative / Absent
POS	Positive / Present
PQL	Practical Quantitation Limit
PRES	Presumptive
QC	Quality Control
RER	Relative Error Ratio (Radiochemistry)
RL	Reporting Limit or Requested Limit (Radiochemistry)
RPD	Relative Percent Difference, a measure of the relative difference between two points
TEF	Toxicity Equivalent Factor (Dioxin)
TEQ	Toxicity Equivalent Quotient (Dioxin)
TNTC	Too Numerous To Count

# Accreditation/Certification Summary

Client: EMLab P&K  
Project/Site: 2508591

Job ID: 440-273742-1

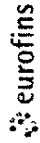
## Laboratory: Eurofins Calscience LLC

All accreditations/certifications held by this laboratory are listed. Not all accreditations/certifications are applicable to this report.

Authority	Program	Identification Number	Expiration Date
California	Los Angeles County Sanitation Districts	10109	09-30-21
California	SCAQMD LAP	17LA0919	11-30-20
California	State	2944	09-30-21
Guam	State	20-003R	10-31-20
Nevada	State	CA00111	07-31-21
Oregon	NELAP	CA300001	01-29-21
USDA	US Federal Programs	P330-20-00034	02-10-23
Washington	State	C916-18	10-11-21

- 1
- 2
- 3
- 4
- 5
- 6
- 7
- 8
- 9
- 10
- 11
- 12
- 13

# Chain of Custody Record



Government Testing  
TestAmerica

TestAmerica Laboratories, Inc. db/a Eurofins TestAmerica

Regulatory Program:  DW  NPDES  RCRA  Other:

COC No: 1 of 1 COCs

Site Contact: Janice Hsu

Lab Contact:

Angela Hetherington  
Email: ahetherington@emlabp.com

Client Contact  
EMLab P&K Irvine  
17461 Denian Ave Suite 100  
Irvine, CA 92614  
Phone (xxx) xxx-xxxx  
FAX (xxx) xxx-xxxx  
Project Name: 2508591  
Site P.O.#

TALS Project #:

Carrier:

Analysis Turnaround Time  
TAT if different from Below  
 CALENDAR DAYS  WORKING DAYS  
 2 weeks  
 1 week  
 2 days  
 1 day

Filtered Sample (Y/N)  X

Sample Identification: P-01

Sample Date	Sample Time	Sample Type (C=Comp, G=Grab)	Matrix	# of Cont
10/21/2020		C		



Preservation Used: 1= Ice, 2= HCl, 3= HNO3, 4= HNO2, 5= NaOH, 6= Other

Possible Hazard Identification: Are any samples from a listed EPA Hazardous Waste? Please List any EPA Waste Codes for the sample in the Comments Section if the lab is to dispose of the sample.

Special Instructions/QC Requirements & Comments

Company: Lab P&K Irvine  
Date/Time: 10/23/2020  
Received by: [Signature]  
Date/Time: 10/23/2020 17:00  
Company: [Signature]  
Date/Time: 10/23/2020 17:00



## Login Sample Receipt Checklist

Client: EMLab P&K

Job Number: 440-273742-1

**Login Number: 273742**

**List Number: 1**

**Creator: Escalante, Maria I**

**List Source: Eurofins Irvine**

Question	Answer	Comment
Radioactivity wasn't checked or is <math>\leq</math> background as measured by a survey meter.	True	
The cooler's custody seal, if present, is intact.	N/A	Not present
Sample custody seals, if present, are intact.	N/A	Not Present
The cooler or samples do not appear to have been compromised or tampered with.	True	
Samples were received on ice.	False	Refer to Job Narrative for details.
Cooler Temperature is acceptable.	False	Cooler temperature outside required temperature criteria.
Cooler Temperature is recorded.	True	
COC is present.	True	
COC is filled out in ink and legible.	True	
COC is filled out with all pertinent information.	False	No time on COC or containers.
Is the Field Sampler's name present on COC?	N/A	Received project as a subcontract.
There are no discrepancies between the containers received and the COC.	True	
Samples are received within Holding Time (excluding tests with immediate HTs)	True	
Sample containers have legible labels.	True	
Containers are not broken or leaking.	True	
Sample collection date/times are provided.	False	No time on COC or sample containers
Appropriate sample containers are used.	True	
Sample bottles are completely filled.	True	
Sample Preservation Verified.	N/A	
There is sufficient vol. for all requested analyses, incl. any requested MS/MSDs	True	
Containers requiring zero headspace have no headspace or bubble is <math><6\text{mm}</math> (1/4").	True	
Multiphasic samples are not present.	True	
Samples do not require splitting or compositing.	True	
Residual Chlorine Checked.	N/A	



## Login Sample Receipt Checklist

Client: EMLab P&K

Job Number: 440-273742-1

**Login Number: 273742**

**List Number: 2**

**Creator: Stratford, Jordan**

**List Source: Eurofins Calscience**

**List Creation: 10/24/20 12:15 PM**

Question	Answer	Comment
Radioactivity wasn't checked or is <math>\leq</math> background as measured by a survey meter.	N/A	
The cooler's custody seal, if present, is intact.	N/A	Not present
Sample custody seals, if present, are intact.	N/A	Not Present
The cooler or samples do not appear to have been compromised or tampered with.	True	
Samples were received on ice.	True	
Cooler Temperature is acceptable.	True	
Cooler Temperature is recorded.	True	2.1
COC is present.	True	
COC is filled out in ink and legible.	True	
COC is filled out with all pertinent information.	True	
Is the Field Sampler's name present on COC?	True	
There are no discrepancies between the containers received and the COC.	True	
Samples are received within Holding Time (excluding tests with immediate HTs)	True	
Sample containers have legible labels.	True	
Containers are not broken or leaking.	True	
Sample collection date/times are provided.	True	
Appropriate sample containers are used.	True	
Sample bottles are completely filled.	True	
Sample Preservation Verified.	True	
There is sufficient vol. for all requested analyses, incl. any requested MS/MSDs	True	
Containers requiring zero headspace have no headspace or bubble is <math><6\text{mm}</math> (1/4").	True	
Multiphasic samples are not present.	True	
Samples do not require splitting or compositing.	True	
Residual Chlorine Checked.	N/A	



002508591

Project No.: 034.017.001 Date of Sampling: 10/21/2020 Client: Peralta  
 Project Name: Phase II and HBMS Horticulture Complex Project Location: Merritt College  
 Sample By: SM Activity:  Background  Removal  Clearance

Results to: sal.mendoza@terrphase.com Turnaround Time:  Same Day  1 Day  2 Days  3 Days  5 Days  Other Due Date and Time:  
 Notes: Analysis  Flame AA (Pb)  Other: **PCB via EPA SW-846 3540C/8082A**

Sample No.	Material	Location	Component	Substrate	Condition
P-01	Penetration mastic	Roof	Pipe	Metal	Intact

Substrate: wood metal concrete plaster drywall brick

Relinquished By:	Date & Time: <u>10/20/2020 15:30</u>	Received By:	Date & Time: <u>10/23/2020 9:29</u>
Relinquished By:	Date & Time:	Received By:	Date & Time:
			Condition Acceptable: <input type="checkbox"/> Yes <input type="checkbox"/> No
			Condition Acceptable: <input type="checkbox"/> Yes <input type="checkbox"/> No

**APPENDIX B**  
**PHOTOGRAPHIC LOG**

---


*THIS PAGE LEFT INTENTIONALLY BLANK*



**Photograph 1:**  
View looking north at the Headhouse Building.



**Photograph 2:**  
View depicting entry to the Headhouse offices and janitor's closet.

<p><b>SAFETY FIRST</b></p>	<p>CLIENT: Peralta Community College District</p>	<p><b>PHOTOGRAPIC LOG</b></p>
	<p>PROJECT: Hazardous Building Material Survey – Merritt College Horticulture Complex Oakland, California</p>	
<p>PROJECT NUMBER 0034.017.001</p>		<p><b>PAGE 1</b></p>



**Photograph 3:**  
View depicting asbestos-containing sheet flooring in Headhouse.



**Photograph 4:**  
View depicting the Landscape Workshop building.

**SAFETY FIRST**



CLIENT: Peralta Community College District

PROJECT: Hazardous Building Material Survey – Merritt College Horticulture Complex  
Oakland, California

PROJECT NUMBER 0034.017.001

**PHOTOGRAPIC LOG**

**PAGE 2**



**Photograph 5:**  
View depicting the interior of the Landscape Workshop building.



**Photograph 6:**  
View depicting the interior of the Lathhouse.

**SAFETY FIRST**



CLIENT: Peralta Community College District

PROJECT: Hazardous Building Material Survey – Merritt College Horticulture Complex  
Oakland, California

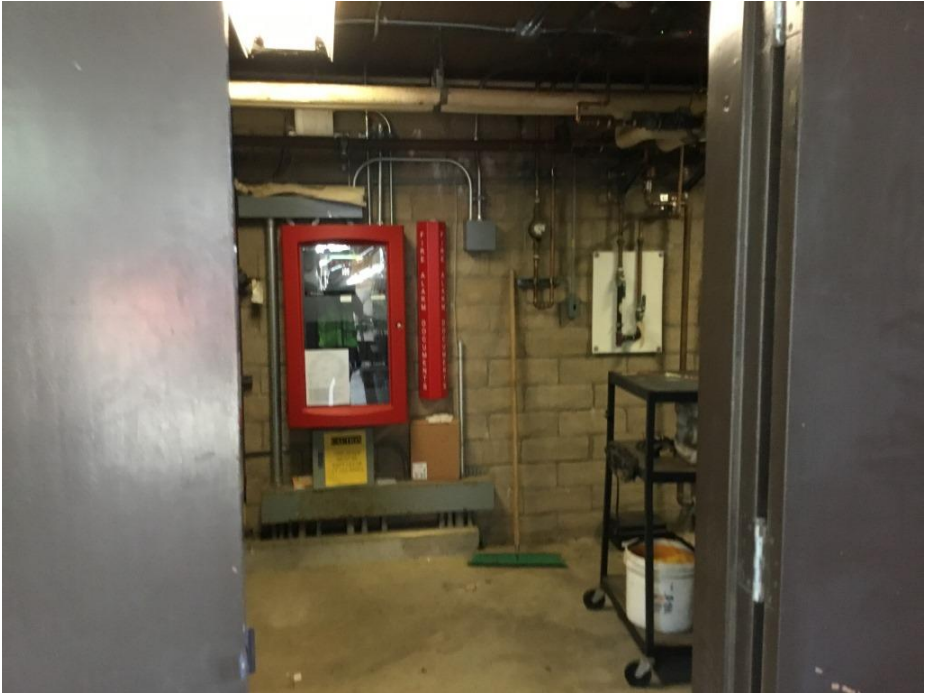
PROJECT NUMBER 0034.017.001

**PHOTOGRAPIC LOG**

**PAGE 3**



**Photograph 7:**  
View depicting the interior of the Lathhouse.



**Photograph 8:**  
View depicting the interior of the Boiler Room.

**SAFETY FIRST**



CLIENT: Peralta Community College District  
PROJECT: Hazardous Building Material Survey – Merritt College Horticulture Complex  
Oakland, California

PROJECT NUMBER 0034.017.001

**PHOTOGRAPIC LOG**

**PAGE 4**





**Photograph 9:**  
View depicting the typical shed associated with the Boiler Room.



**Photograph 10:**  
View depicting the interior of the Greenhouse.

**SAFETY FIRST**



CLIENT: Peralta Community College District

PROJECT: Hazardous Building Material Survey – Merritt College Horticulture Complex  
Oakland, California

PROJECT NUMBER 0034.017.001

**PHOTOGRAPIC LOG**

**PAGE 5**



**Photograph 11:**  
View depicting the interior Transite wall panels of the Greenhouse.



**Photograph 12:**  
View depicting the interior of classroom/lab H101.

**SAFETY FIRST**



CLIENT: Peralta Community College District

PROJECT: Hazardous Building Material Survey – Merritt College Horticulture Complex  
Oakland, California

PROJECT NUMBER 0034.017.001

**PHOTOGRAPIC LOG**

**PAGE 6**



**Photograph 13:**  
View depicting the Restroom building interior.



**Photograph 14:**  
View depicting the Restroom building interior.

**SAFETY FIRST**



CLIENT: Peralta Community College District

PROJECT: Hazardous Building Material Survey – Merritt College Horticulture Complex  
Oakland, California

PROJECT NUMBER 0034.017.001

**PHOTOGRAPIC LOG**

**PAGE 7**



**Photograph 15:**  
View depicting the typical roof



**Photograph 16:**  
View depicting the typical roof

**SAFETY FIRST**



CLIENT: Peralta Community College District

PROJECT: Hazardous Building Material Survey – Merritt College Horticulture Complex  
Oakland, California

PROJECT NUMBER 0034.017.001

**PHOTOGRAPIC LOG**

**PAGE 8**

**APPENDIX C**  
**INSPECTOR CERTIFICATION(S)**

---

*THIS PAGE LEFT INTENTIONALLY BLANK*

DEPARTMENT OF INDUSTRIAL RELATIONS  
Division of Occupational Safety and Health  
Asbestos Certification & Training Unit

1750 Howe Avenue, Suite 460  
Sacramento, CA 95825

(916) 574-2993 Office <http://www.dir.ca.gov/dosh/asbestos.html> [acru@dir.ca.gov](mailto:acru@dir.ca.gov)



409255307C

393

394

MS Testing Services  
Michael J Schoedinger  
312 W. Portales Drive  
Mountain House CA 95391

October 22, 2020

Dear Certified Asbestos Consultant or Technician:

Enclosed is your certification card. **To maintain your certification, you must abide by the rules printed on the back of the certification card.**

Your certification is valid for a period of one year. If you wish to renew your certification, you must apply for renewal at least 60 days before the expiration date shown on your card. [8 CCR 341.15(h)(1)].

Please hold and do not send copies of your required AHERA refresher renewal certificates to our office until you apply for renewal of your certification.

Certificates must be kept current if you are actively working as a CAC or CSST. The grace period is only for those who are not actively working as an asbestos consultant or site surveillance technician.

Please notify our office via U.S. Postal Service or other carrier of any changes in your mailing or work address within 15 days of the change.

Sincerely,

Jeff Ferrell  
Senior Safety Engineer

Attachment: Certification Card

cc: File



State of California Department of Public Health  
Lead-Related Construction Certificate

<u>Certificate Type</u>	<u>Expiration Date</u>
Inspector/Assessor	04/17/2021



Michael J. Schoedinger ID # 24858



DEPARTMENT OF INDUSTRIAL RELATIONS  
Division of Occupational Safety and Health  
Asbestos Certification & Training Unit  
2424 Arden Way, Suite 495  
Sacramento, CA 95825-2417  
(916) 574-2993 Office <http://www.dir.ca.gov/dosh/asbestos.html> [acru@dir.ca.gov](mailto:acru@dir.ca.gov)



306063386C

254

May 05, 2020

Salvador Mendoza  
1305 Gold Pan Drive  
Roseville CA 95661

Dear Certified Asbestos Consultant or Technician:

Enclosed is your certification card. To maintain your certification, you must abide by the rules printed on the back of the certification card.

Your certification is valid for a period of one year. If you wish to renew your certification, you must apply for renewal at least 60 days before the expiration date shown on your card. [8 CCR 341.15(h)(1)].

Please hold and do not send copies of your required AHERA refresher renewal certificates to our office until you apply for renewal of your certification.

Certificates must be kept current if you are actively working as a CAC or CSST. The grace period is only for those who are not actively working as an asbestos consultant or site surveillance technician.

Please notify our office via U.S. Postal Service or other carrier of any changes in your mailing or work address within 15 days of the change.

Sincerely,

Jeff Ferrell  
Senior Safety Engineer

Attachment: Certification Card

cc: File

Renewal - Card Attached 08/2019

State of California  
Division of Occupational Safety and Health  
**Certified Asbestos Consultant**

**Salvador Mendoza**  
Name

Certification No. **03-3386**

Expires on **06/25/21**

This certification was issued by the Division of Occupational Safety and Health as authorized by Sections 7180 et seq. of the Business and Professions Code.






STATE OF CALIFORNIA  
DEPARTMENT OF PUBLIC HEALTH



# LEAD-RELATED CONSTRUCTION CERTIFICATE

**INDIVIDUAL:**



**Salvador Mendoza**

**CERTIFICATE TYPE:**

Lead Inspector/Assessor

**NUMBER:**

LRC-00000496

**EXPIRATION DATE:**

7/18/2021

Disclaimer: This document alone should not be relied upon to confirm certification status. Compare the individual's photo and name to another valid form of government issued photo identification. Verify the individual's certification status by searching for Lead-Related Construction Professionals at [www.cdph.ca.gov/programs/clppb](http://www.cdph.ca.gov/programs/clppb) or calling (800) 597-LEAD.

**APPENDIX D**  
**CDPH FORM 8552**

---

*THIS PAGE LEFT INTENTIONALLY BLANK*

## LEAD HAZARD EVALUATION REPORT

**Section 1 – Date of Lead Hazard Evaluation** October 21, 2020

**Section 2 – Type of Lead Hazard Evaluation (Check one box only)**  
 Lead Inspection   
  Risk assessment   
  Clearance Inspection   
  Other (specify)  

**Section 3 – Structure Where Lead Hazard Evaluation Was Conducted**

Address [number, street, apartment (if applicable)] <span style="border: 1px solid black; padding: 2px;">Merritt College - Horticulture Complex</span>		City <span style="border: 1px solid black; padding: 2px;">Oakland</span>	County <span style="border: 1px solid black; padding: 2px;">Alameda</span>	Zip Code <span style="border: 1px solid black; padding: 2px;"> </span>
Construction date (year) of structure <span style="border: 1px solid black; padding: 2px;">Circa 1960</span>	Type of structure <input type="checkbox"/> Multi-unit building <input type="checkbox"/> School or daycare <input type="checkbox"/> Single family dwelling <input checked="" type="checkbox"/> Other <span style="border: 1px solid black; padding: 2px;">College</span>		Children living in structure? <input type="checkbox"/> Yes <input checked="" type="checkbox"/> No <input type="checkbox"/> Don't Know	

**Section 4 – Owner of Structure (If business/agency, list contact person)**

Name <span style="border: 1px solid black; padding: 2px;">Peralta Community College District</span>		Telephone number <span style="border: 1px solid black; padding: 2px;">415.235.8028</span>		
Address [number, street, apartment (if applicable)] <span style="border: 1px solid black; padding: 2px;">333 East Eight Street</span>		City <span style="border: 1px solid black; padding: 2px;">Oakland</span>	State <span style="border: 1px solid black; padding: 2px;">CA</span>	Zip Code <span style="border: 1px solid black; padding: 2px;">94606</span>

**Section 5 – Results of Lead Hazard Evaluation (check all that apply)**

No lead-based paint detected   
  Intact lead-based paint detected   
  Deteriorated lead-based paint detected  
 No lead hazards detected   
  Lead-contaminated dust found   
  Lead-contaminated soil found   
  Other  

**Section 6 – Individual Conducting Lead Hazard Evaluation**

Name <span style="border: 1px solid black; padding: 2px;">Salvador Mendoza</span>		Telephone number <span style="border: 1px solid black; padding: 2px;">916.661.2484</span>		
Address [number, street, apartment (if applicable)] <span style="border: 1px solid black; padding: 2px;">1415 L Street, Suite 100</span>		City <span style="border: 1px solid black; padding: 2px;">Sacramento</span>	State <span style="border: 1px solid black; padding: 2px;">CA</span>	Zip Code <span style="border: 1px solid black; padding: 2px;">95814</span>
CDPH certification number <span style="border: 1px solid black; padding: 2px;">LRC-00000496</span>	Signature 			Date <span style="border: 1px solid black; padding: 2px;">11/17/2020</span>

Name and CDPH certification number of any other individuals conducting sampling or testing (if applicable)  
 

**Section 7 – Attachments**

A. A foundation diagram or sketch of the structure indicating the specific locations of each lead hazard or presence of lead-based paint;  
 B. Each testing method, device, and sampling procedure used;  
 C. All data collected, including quality control data, laboratory results, including laboratory name, address, and phone number.

First copy and attachments retained by inspector  
 Second copy and attachments retained by owner

Third copy only (no attachments) mailed or faxed to:  
 California Department of Public Health  
 Childhood Lead Poisoning Prevention Branch Reports  
 850 Marina Bay Parkway, Building P, Third Floor  
 Richmond, CA 94804-6403  
 Fax: (510) 620-5656