

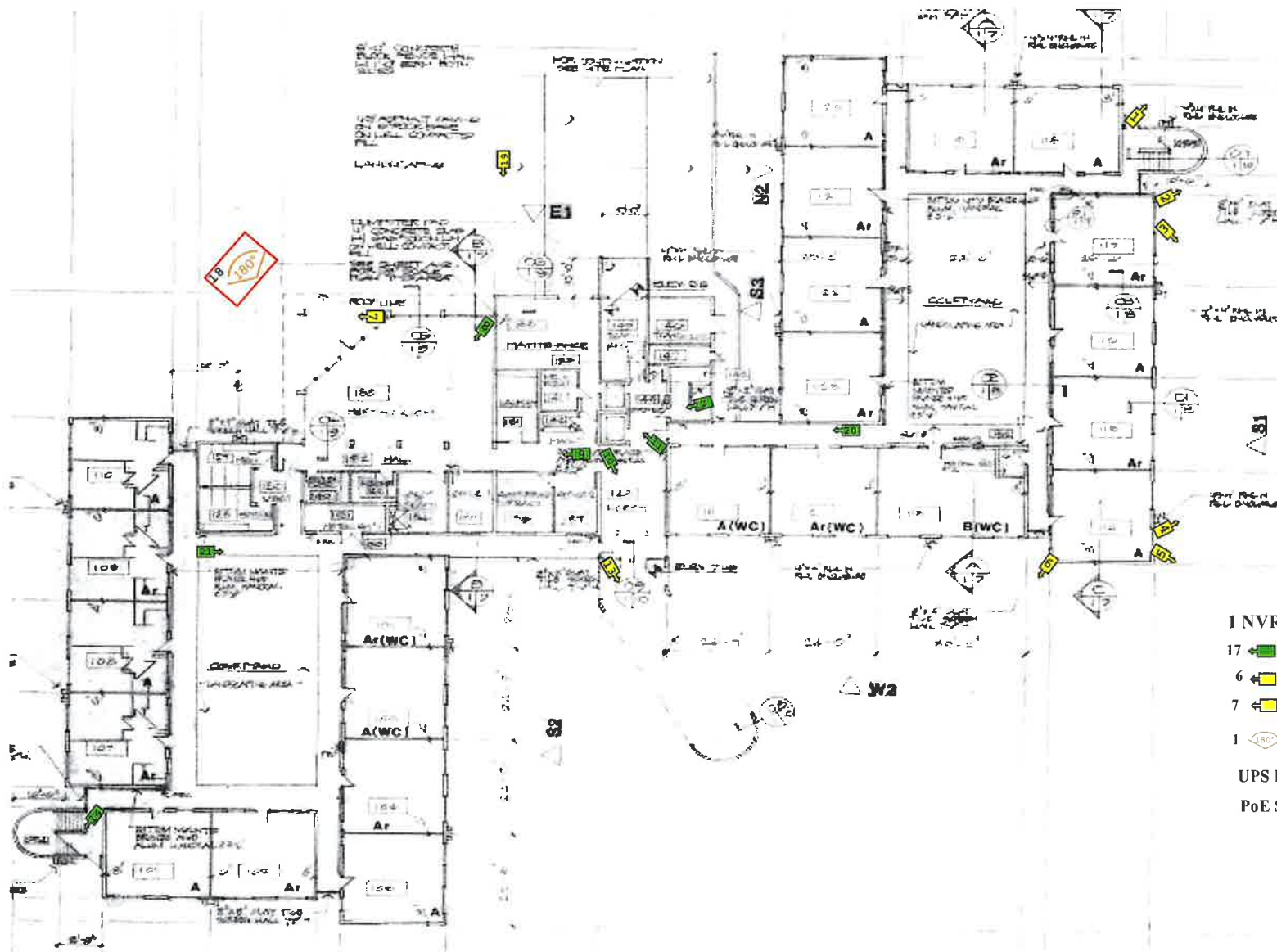
Attachment M
SITE DRAWINGS AND CAMERA LOCATIONS





GRIFFIN GARDENS APARTMENTS

4881 Griffin Road Davie, FL 33314

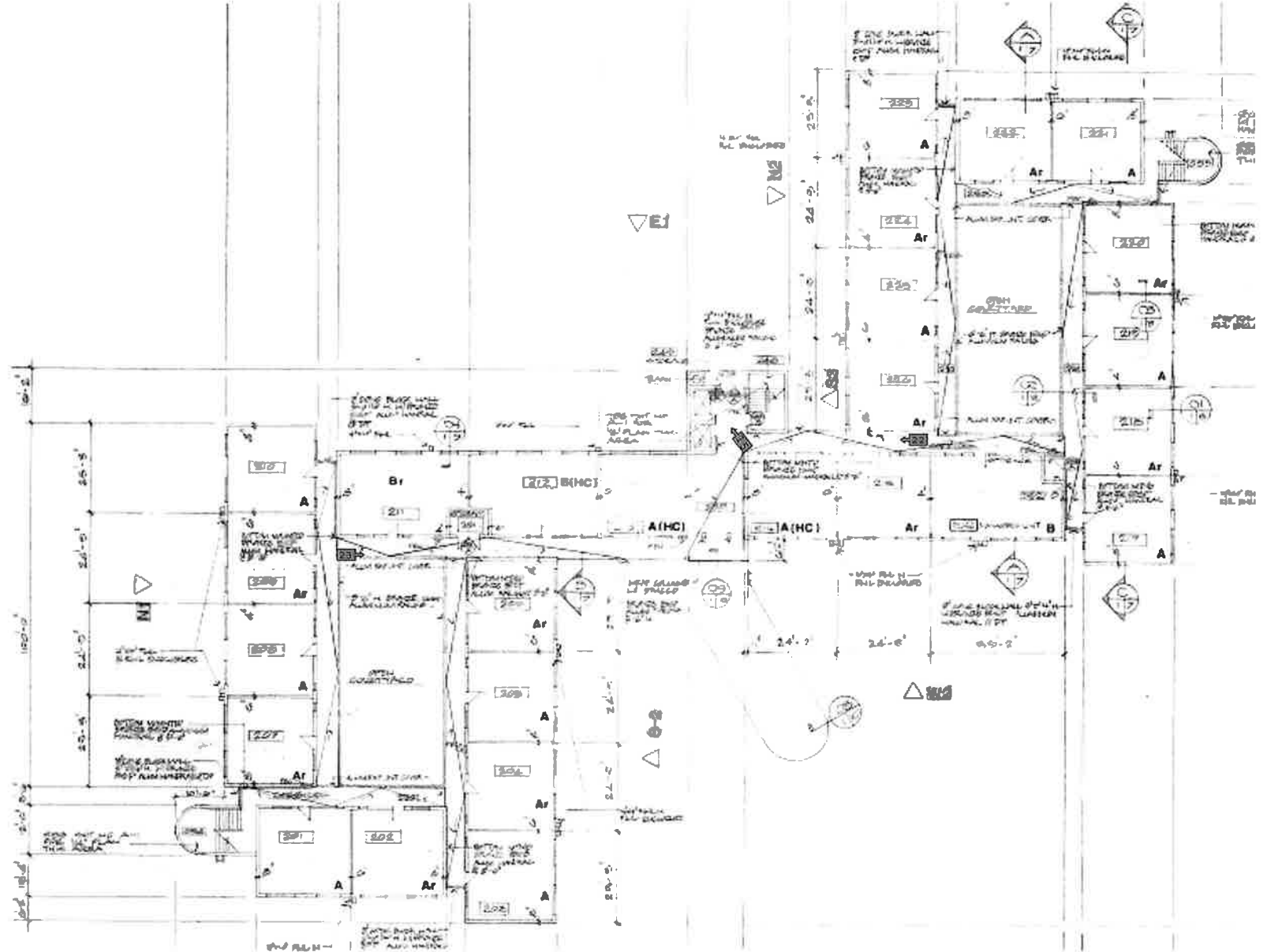


Page 1
Ground Floor

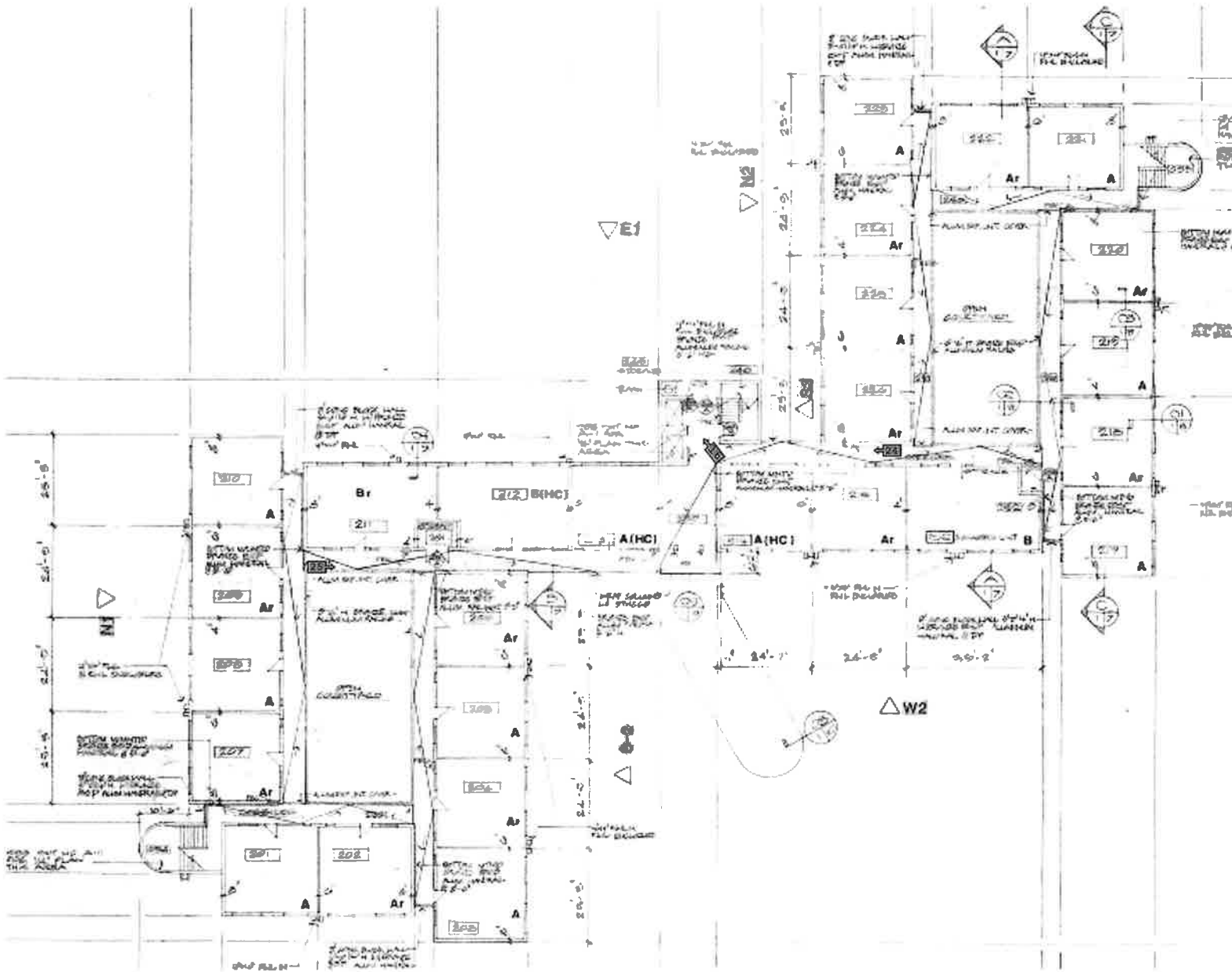


- 1 NVR
- 17  5MP Fixed 2.8mm Lens Dome Cameras
- 6  5MP Remote Focus 2.8mm Lens Bullet Cameras
- 7  5MP Fixed 2.8mm Lens Bullet Cameras
- 1  8MP Fixed 2.8mm Lens Bullet Camera
- UPS Power Supply
- PoE Switch Supply





Third Floor



Camera # GRIFFEN GARDENS APARTMENTS - CAMERA LOCATIONS AS NOTED ON DRAWINGS

1. 2.8mm variable focus lens, wall mounted **bullet camera** located at exterior of SE stairwell door facing SE.
2. 2.8mm variable focus lens, wall mounted **bullet camera** located at SE corner of building facing SE.
3. 2.8mm variable focus lens, wall mounted **bullet camera** located at SE corner of building facing SW.
4. 2.8mm variable focus lens, wall mounted **bullet camera** located SW corner of building facing SE.
5. 2.8mm variable focus lens, wall mounted **bullet camera** located SW corner of building facing SW.
6. 2.8mm variable focus lens, wall mounted **bullet camera** located at West elevation of South building facing NW.
7. 2.8mm fixed lens, wall mounted **bullet camera** located at NE corner of resident patio facing North.
8. 2.8mm fixed lens, wall mounted dome camera located at SE corner of resident patio facing NW to patio entrance/exit.
9. 2.8mm fixed lens, wall mounted dome camera located at property managers office facing North down hallway.
10. 2.8mm fixed lens, wall mounted dome camera located at NE corner of lobby facing West entrance
11. 2.8mm fixed lens, wall mounted dome camera located SE corner of lobby facing elevator.
12. 2.8mm fixed lens, wall mounted dome camera located inside central stairwell facing door.
13. 2.8mm fixed lens, wall mounted **bullet camera** located exterior of west entrance facing drive-through.
14. 2.8mm fixed lens, wall mounted dome camera located inside North stairwell facing door.
15. 2.8mm fixed lens, wall mounted dome camera located 2nd floor SE corner of lobby facing elevators
16. 2.8mm fixed lens, wall mounted dome camera located 3rd floor SE corner of lobby facing elevators
17. 2.8mm fixed lens, wall mounted dome camera located 4th floor SE corner of lobby facing elevators
18. 180 Degree pan, pole mounted **bullet camera** located NE of resident patio facing NE.
19. 2.8mm fixed lens, pole mounted **bullet camera** located at the end of maintenance drive facing toward maintenance roll-up door
20. 2.8mm fixed lens, wall mounted dome camera located at end of walkway facing toward entrance door to South courtyard 1st Floor
21. 2.8mm fixed lens, wall mounted dome camera located at end of walkway facing toward entrance door to North courtyard 1st Floor
22. 2.8mm fixed lens, wall mounted dome camera located at end of walkway facing toward entrance door to South courtyard 2nd Floor

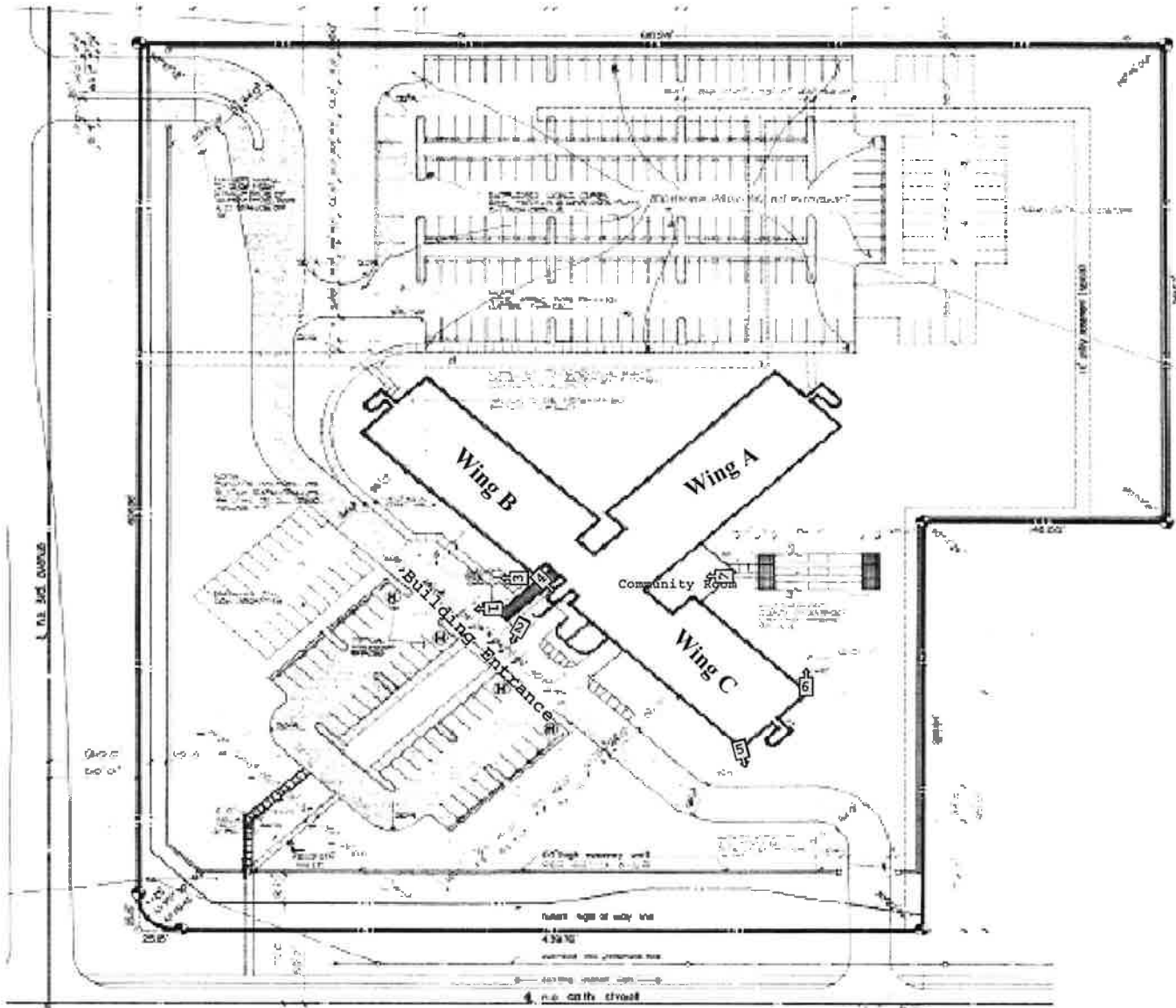
23. 2.8mm fixed lens, wall mounted dome camera located at end of walkway facing toward entrance door to North courtyard 2nd Floor
24. 2.8mm fixed lens, wall mounted dome camera located at end of walkway facing toward entrance door to South courtyard 3rd Floor
25. 2.8mm fixed lens, wall mounted dome camera located at end of walkway facing toward entrance door to North courtyard 3rd Floor
26. 2.8mm fixed lens, wall mounted dome camera located at end of walkway facing toward entrance door to South courtyard 4th Floor
27. 2.8mm fixed lens, wall mounted dome camera located at end of walkway facing toward entrance door to North courtyard 4th Floor
28. 2.8mm fixed lens, wall mounted bullet camera located above 4th floor walkway at SE corner of North Courtyard facing NW toward 1st floor.
29. 2.8mm fixed lens, wall mounted bullet camera located above 4th floor walkway at NW corner of North Courtyard facing SE toward 1st floor.
30. 2.8mm fixed lens, wall mounted bullet camera located above 4th floor walkway at SE corner of South Courtyard facing NW toward 1st floor.
31. 2.8mm fixed lens, wall mounted bullet camera located above 4th floor walkway at NW corner of South Courtyard facing SE toward 1st floor.

HIGHLAND GARDENS APARTMENTS

331 NE 48th Street Deerfield Beach, FL 33064



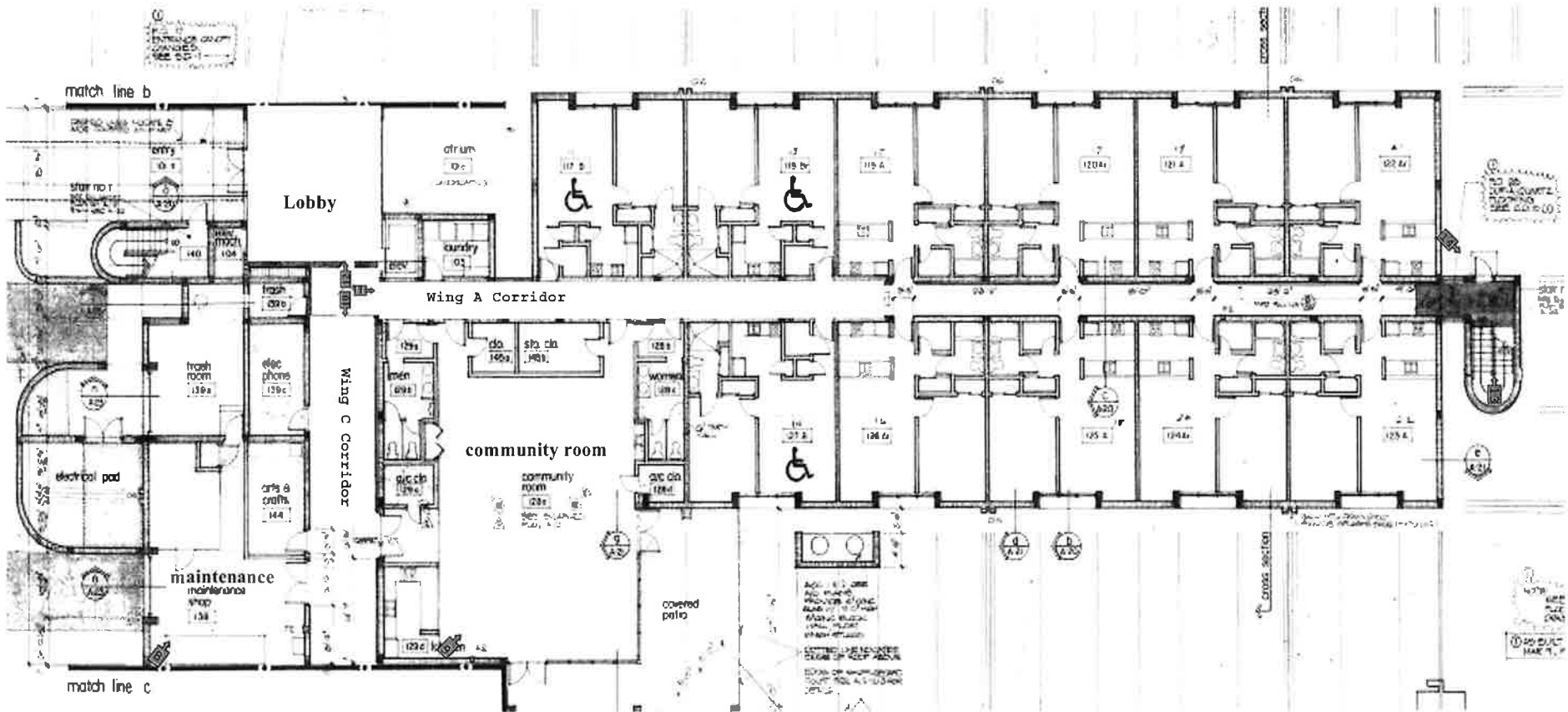
HIGHLAND GARDENS
 331 NE 48TH STREET
 DEERFIELD BEACH 33064



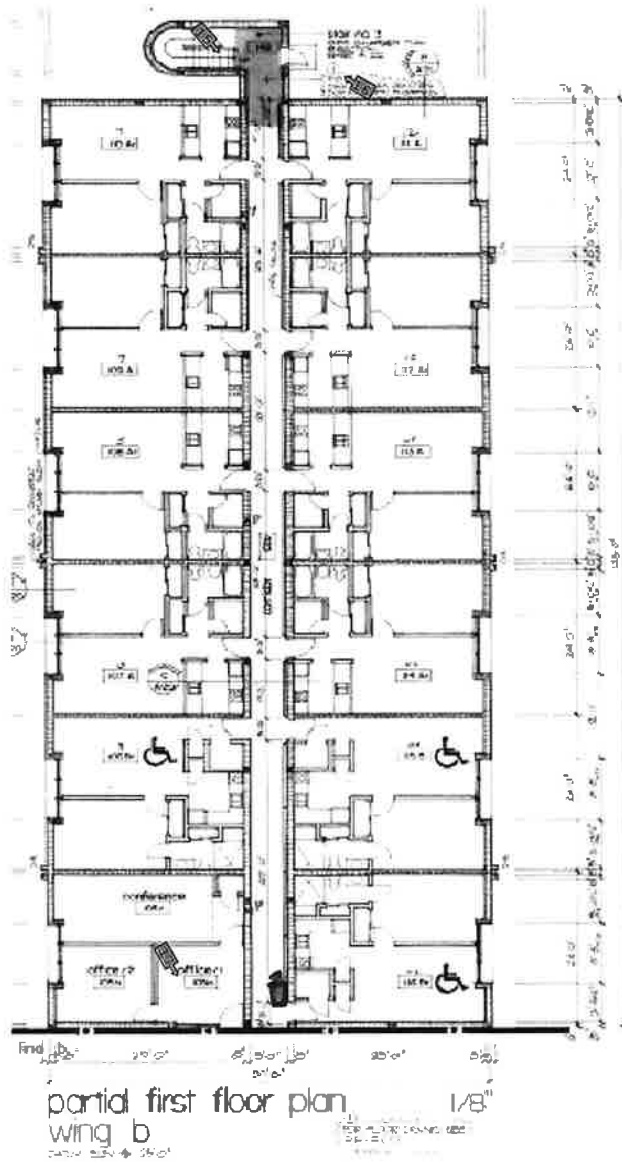
- 1 NVR 24 T
- 7 ◀ SMP Fixed 4mm Lens
- 19 ◀ SMP Fixed 2.8mm Lens
- 18 Wall Mounts
- UPS Power Supply

Site Plan

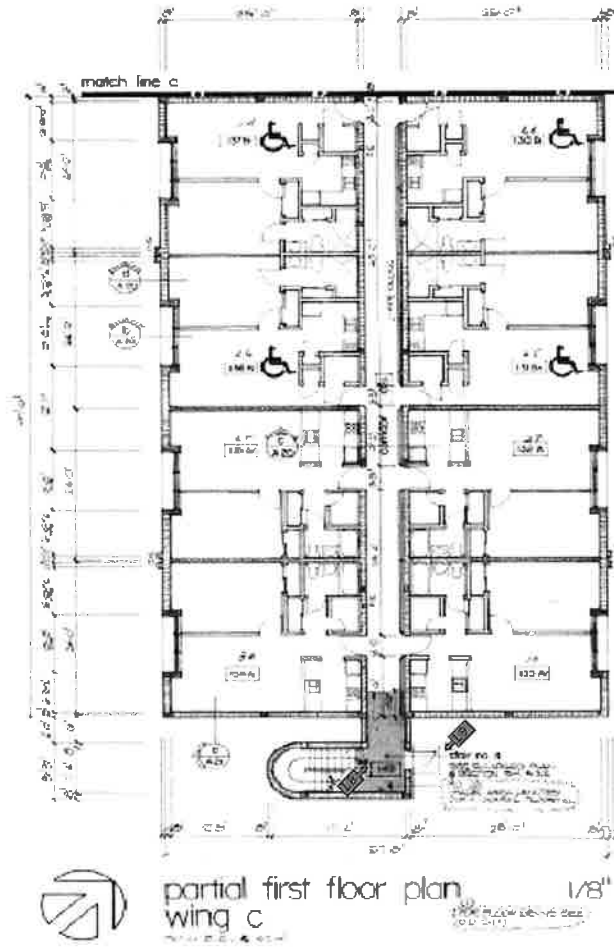




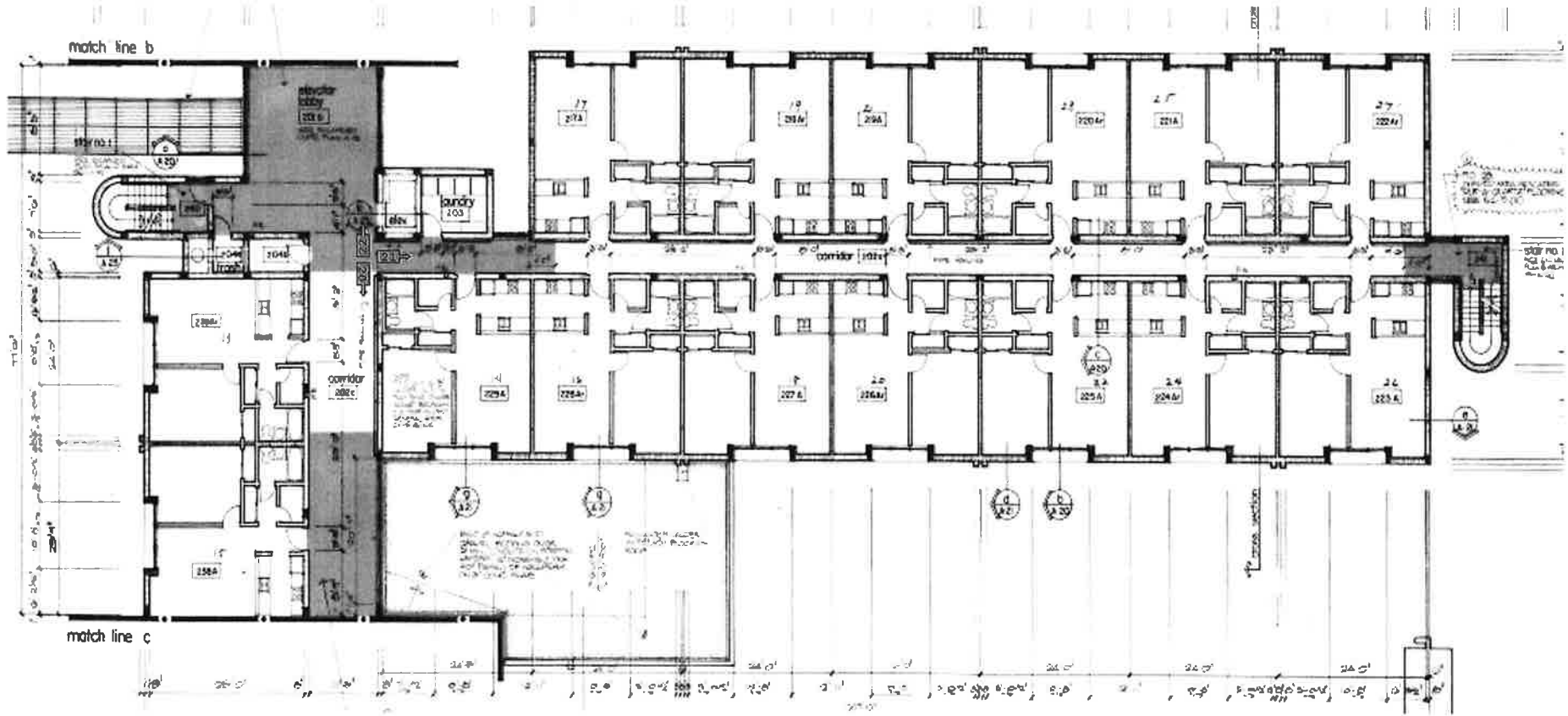
Wing A 1st Floor



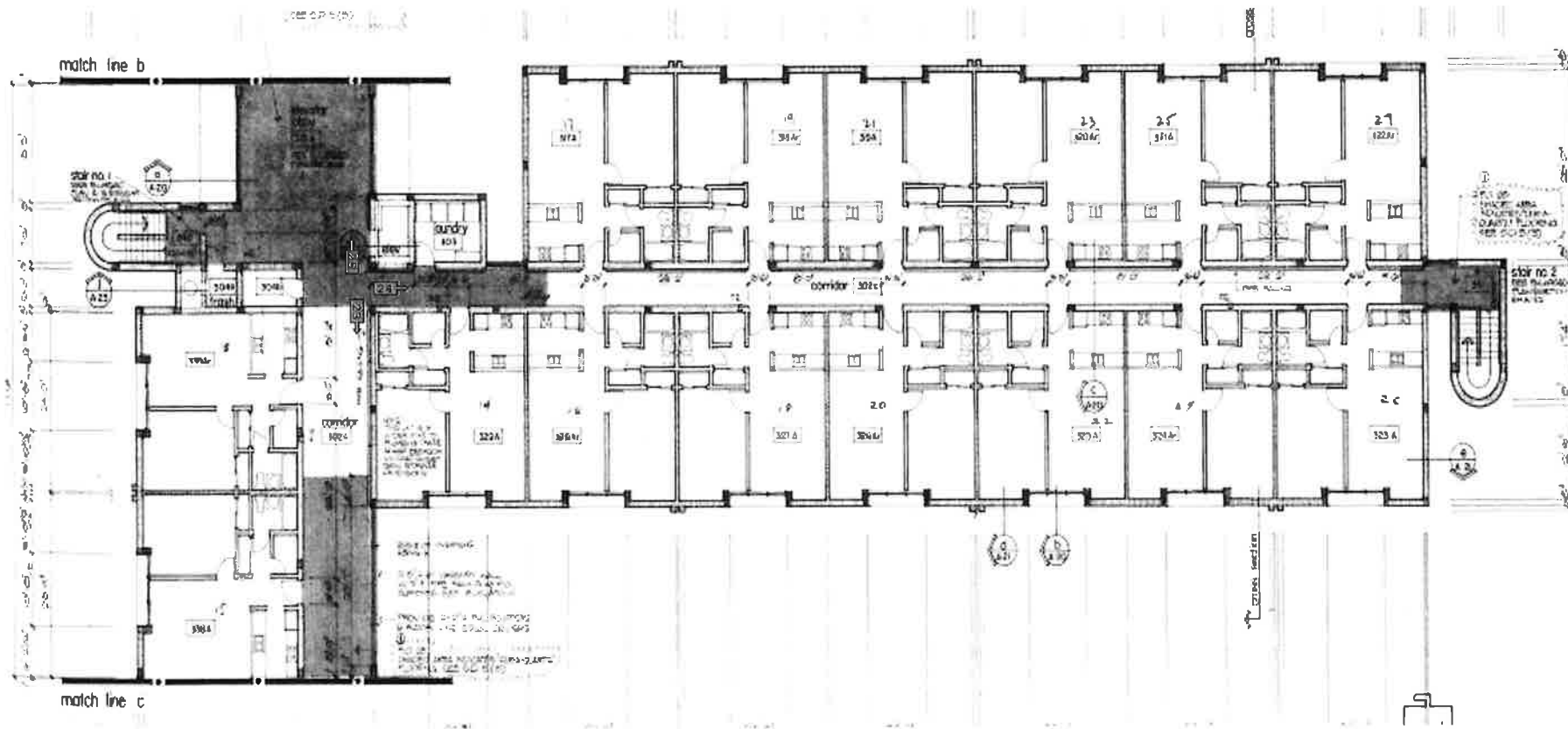
Added 1 camera to 'B' wing



Wing B and C 1st Floor



Wing A 2nd Floor



Wing A 3rd Floor

Camera # **HIGHLAND GARDEN APARTMENTS - CAMERA LOCATIONS AS NOTED ON DRAWINGS**

1. 4mm fixed lens, wall mount dome camera located at Southwest elevation drive up entrance facing West
2. 4mm fixed lens, wall mount dome camera located at Southwest elevation drive up entrance facing South
3. 4mm fixed lens, wall mount dome camera located at Southwest elevation walk up entrance facing West
4. 4mm fixed lens, wall mount dome camera located at Southwest elevation walk up entrance facing Southeast
5. 4mm fixed lens, wall mount dome camera located at Southeast corner of wing C facing South
6. 4mm fixed lens, wall mount dome camera located at Northeast corner of wing C facing North
7. 4mm fixed lens, wall mount dome camera located at East corner of community room between wing A and C
8. 2.8mm fixed lens, wall mount dome camera located at Wing C Southeast corner of maintenance room facing North
9. 2.8mm fixed lens, wall mount dome camera located at Wing C Southwest corner of community room facing North
10. 2.8mm fixed lens, wall mount dome camera located at intersection of wing A & C first floor corridor facing down wing C
11. 2.8mm fixed lens, wall mount dome camera located at intersection of wing A & C first floor corridor facing down wing A
12. 2.8mm fixed lens, wall mount dome camera located at intersection of wing A & C first floor corridor facing elevator lobby
13. 2.8mm fixed lens, wall mount dome camera located at North end of Wing A inside stairwell facing exit door
14. 2.8mm fixed lens, wall mount **bullet camera** located at North exterior elevation of Wing A facing exit door
15. 2.8mm fixed lens, wall mount dome camera located at North end of Wing B inside stairwell facing exit door
16. 2.8mm fixed lens, wall mount **bullet camera** located at North exterior elevation of Wing B facing exit door
17. 2.8mm fixed lens, wall mount dome camera located in Northwest corner of Wing B office facing office entrance
18. 2.8mm fixed lens, wall mount dome camera located at South end of Wing C inside stairwell facing exit door
19. 2.8mm fixed lens, wall mount **bullet camera** located at South exterior elevation of Wing C facing exit door
20. 2.8mm fixed lens, wall mount dome camera located at intersection of wing A & C second floor corridor facing down wing C
21. 2.8mm fixed lens, wall mount dome camera located at intersection of wing A & C second floor corridor facing down wing A
22. 2.8mm fixed lens, wall mount dome camera located at intersection of wing A & C second floor corridor facing elevator lobby

23. 2.8 mm fixed lens, wall mount dome camera located at intersection of wing A & C third floor corridor facing down wing C
24. 2.8mm fixed lens, wall mount dome camera located at intersection of wing A & C third floor corridor facing down wing A
25. 2.8mm fixed lens, wall mount dome camera located at intersection of wing A & C third floor corridor facing elevator lobby
26. 2.8mm fixed lens, wall mount dome camera located at intersection of B wing facing down corridor

EVERGLADE HEIGHTS APARTMENTS

2400 NW 22nd Street Fort Lauderdale, FL 33311



EVERGLADE HEIGHTS APARTMENTS 2400 NW 22ND STREET FT. LAUDERDAL FL. 33311



Auburn Gardens and Roosevelt Heights
Fed to Everglade Heights

- 1 NVR 24 T
- 17  5MP 2.8mm Fixed Lens Camera
- 7  Transmitters
- 9 Pole Mounts
- 8 Wall Mounts
- UPS Power Supply



Camera # **EVERGLADES HEIGHTS APARTMENTS - CAMERA LOCATIONS AS NOTED ON DRAWINGS**

1. 2.8mm fixed lens, wall mounted bullet camera located at South corner of building A Facing South.
2. 2.8mm fixed lens, wall mounted bullet camera located at South corner of building A Facing SE.
3. 2.8mm fixed lens, wall mounted bullet camera located at South corner of building A Facing NE.
4. 2.8mm fixed lens, wall mounted bullet camera located at South corner of building B facing SW.
5. 2.8mm fixed lens, wall mounted bullet camera located at South corner of building facing SE.
6. 2.8mm fixed lens, pole mounted bullet camera between buildings D, E, and F facing SW.
7. 2.8mm fixed lens, pole mounted bullet camera located between buildings D, E, and F facing SE.
8. 2.8mm fixed lens, pole mounted bullet camera located between buildings D, E, and F facing NE.
9. 2.8mm fixed lens, wall mounted bullet camera located at North corner of building facing North
10. 2.8mm fixed lens, wall mounted bullet camera located at North corner of building facing West.
11. 2.8mm fixed lens, wall mounted bullet camera located at North corner of building facing SE.
12. 2.8mm fixed lens, pole mounted bullet camera located on NW 24th Ave facing NW toward property entrance.
13. 2.8mm fixed lens, pole mounted bullet camera located on NW 24th Ave facing the drive between building E, F, and G
14. 2.8mm fixed lens, pole mounted bullet camera located on NW 24th Ave facing North toward property entrance
15. 2.8mm fixed lens, pole mounted bullet camera located on NW 24th Ave facing SW
16. 2.8 mm fixed pole mounted bullet camera located on NW 22nd Ave. facing SW and SE
17. 2.88mm Fixed pole mounted bullet camera located on NW 22 Ave. Facing SW and SE

MEYERS ESTATES APARTMENTS

2411 NW 7th Street Fort Lauderdale, FL 33311



**MEYERS ESTATES
2411 NW 7TH STREET
FT. LAUDERDALE FL 33311**



- 1 NVR 24 T
- 23  SMP Fixed 2.8mm Lens
- 8  Transmitters
- 7 High Power AC1200 Dual-Band Outdoor Bridge
- 3  Receivers
- 7 POE Switches
- 5 Pole Mounts
- 18 Wall Mounts



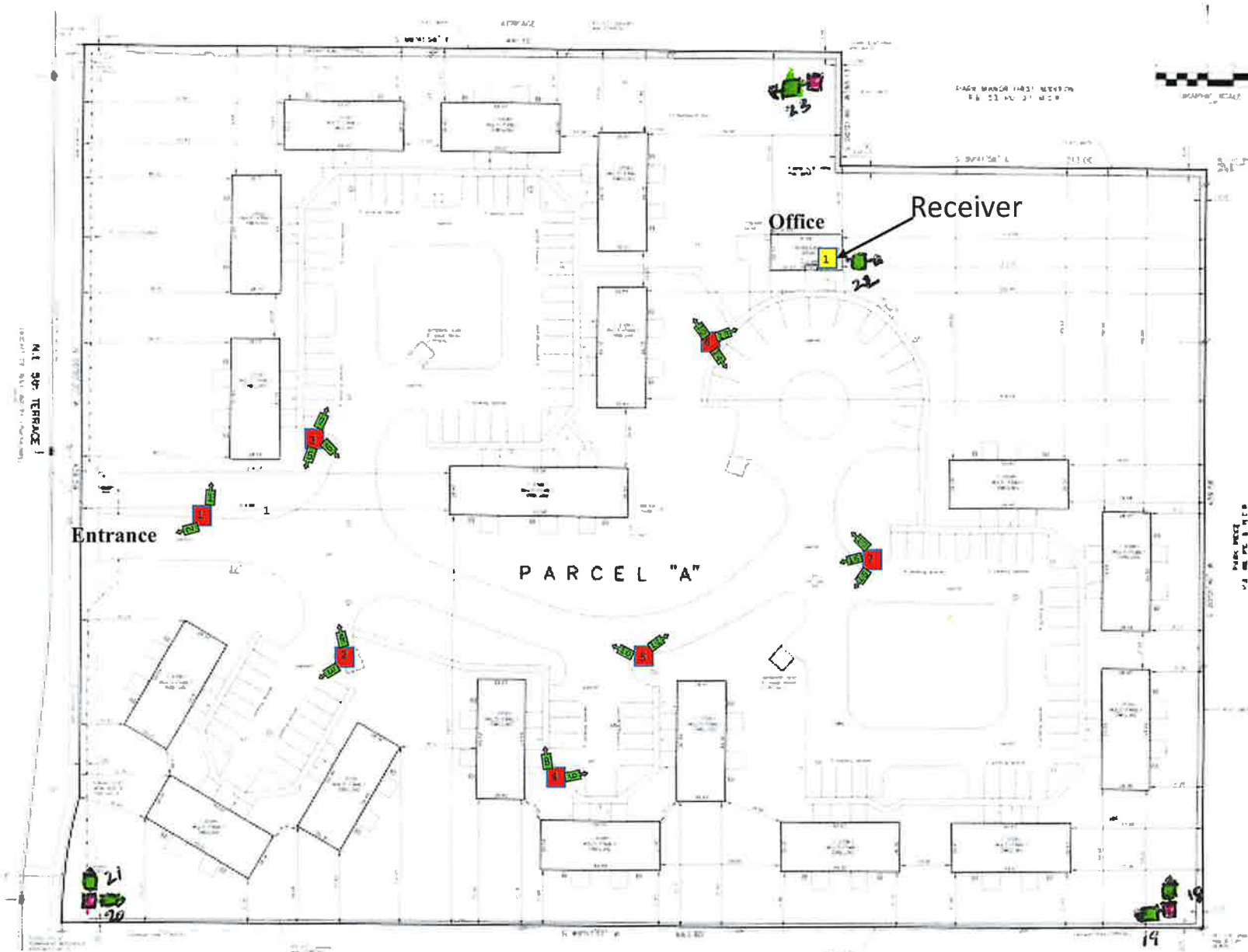
Camera# MEYERS ESTATES APARTMENTS - CAMERA LOCATIONS AS NOTED ON DRAWINGS

1. 2.8mm fixed lens, pole mounted bullet camera located at entrance facing SE.
2. 2.8mm fixed lens, pole mounted bullet camera located at entrance facing NE.
3. 2.8mm fixed lens, wall mounted bullet camera located on South elevation of building 4 facing SE
4. 2.8mm fixed lens, wall mounted bullet camera located on South elevation of building 4 facing SW
5. 2.8mm fixed lens, wall mounted bullet camera located on East elevation of building 5 facing North
6. 2.8mm fixed lens, wall mounted bullet camera located on East elevation of building 7 facing South
7. 2.8mm fixed lens, wall mounted bullet camera located on East elevation of building 7 facing North
8. 2.8mm fixed lens, wall mounted bullet camera located on East elevation of building 8 facing South
9. 2.8mm fixed lens, wall mounted bullet camera located on East elevation of building 8 facing South
10. 2.8mm fixed lens, wall mounted bullet camera located on East elevation of building 8 facing North
11. 2.8mm fixed lens, wall mounted bullet camera located on West elevation of building 1 facing North
12. 2.8mm fixed lens, wall mounted bullet camera located on West elevation of building 1 facing South
13. 2.8mm fixed lens, pole mounted bullet camera located on East elevation of building 1 facing SE
14. 2.8mm fixed lens, pole mounted bullet camera located on East elevation of building 1 facing East
15. 2.8mm fixed lens, pole mounted bullet camera located at NE end of parking lot facing NW
16. 2.8mm fixed lens, wall mounted bullet camera located at NE end of parking lot facing SW
17. 2.8mm fixed lens, wall mounted bullet camera located at NE end of parking lot facing SE
18. 2.8mm fixed lens, wall mounted bullet camera located at SW corner of office facing NW
19. 2.8mm fixed lens, wall mounted bullet camera located at SW corner of office facing SE
20. 2.8mm fixed lens, wall mounted bullet camera located at SW corner of office facing SW
21. 2.8mm fixed lens, wall mounted bullet camera located at North elevation of office facing North
22. 2.8mm fixed lens, wall mounted bullet camera located at East elevation of office facing SE
23. 2.8mm fixed lens, wall mounted bullet camera located at SW corner of office facing SW
24. Reposition cameras, 10, 11, and 12




PARK RIDGE COURT APARTMENTS

5200 NE 5th Terrace Pompano Beach 33064





PARK RIDGE COURT
 5200 NE 5TH TERRACE
 POMPANO BEACH FL 33064

- 1 NVR 24 T
- 23  5MP Fixed 2.8mm Lens
- 11  Transmitters
- 1  Receiver
- 20 Pole Mounts
- UPS Power Supply



Camera # PARK RIDGE COURT APARTMENTS -- CAMERA LOCATIONS AS NOTED ON DRAWINGS

1. 2.8mm fixed lens, pole mounted bullet camera located at entrance facing West
2. 2.8mm fixed lens, pole mounted bullet camera located at entrance facing East
3. 2.8mm fixed lens, pole mounted bullet camera located at East side of entrance to buildings 8-10 facing SW
4. 2.8mm fixed lens, pole mounted bullet camera located at East side of entrance to buildings 8- 10 facing North
5. 2.8mm fixed lens, pole mounted bullet camera located at West side of entrance to buildings 1-7 facing SW
6. 2.8mm fixed lens, pole mounted bullet camera located at West side of entrance to buildings 1-7 facing SE
7. 2.8mm fixed lens, pole mounted bullet camera located at West side of entrance to buildings 1-7 facing NE
8. 2.8mm fixed lens, pole mounted bullet camera located at the front middle of buildings 11 & 12 facing North
9. 2.8mm fixed lens, pole mounted bullet camera located at the front middle of buildings 11 & 12 facing East
10. 2.8mm fixed lens, pole mounted bullet camera located at the East side entrance to buildings 11-13 NW
11. 2.8mm fixed lens, pole mounted bullet camera located at the East side entrance to buildings 11-13 NE
12. 2.8mm fixed lens, pole mounted bullet camera located at the NW on the outside of the semicircular parking area in front of the office facing NW
13. 2.8mm fixed lens, pole mounted bullet camera located at the NW on the outside of the semicircular parking area in front of the office facing NE
14. 2.8mm fixed lens, pole mounted bullet camera located at the NW on the outside of the semicircular parking area in front of the office facing SE
15. 2.8mm fixed lens, pole mounted bullet camera located at the East side of entrance to buildings 14-18 facing SW
16. 2.8mm fixed lens, pole mounted bullet camera located at the East side of entrance to buildings 14-18 facing West
17. 2.8mm fixed lens, pole mounted bullet camera located at the East side of entrance to buildings 14-18 facing NW
18. 2.8mm fixed lens pole mounted bullet camera located at SE property line
19. 2.8mm fixed lens pole mounted bullet camera located at the SW property line
20. 2.8mm fixed lens pole mounted bullet camera located at the SW property line
21. 2.8 mm fixed lens pole mounted bullet camera located at the N property line
22. 2.8 mm fixed lens pole mounted bullet camera located at the N property line
23. 2.8 mm fixed lens wall mounted bullet camera located on E side of office building

ROOSEVELT GLENN SINGLE FAMILY HOMES

1200-1241 NW 27th Lane Fort Lauderdale, FL 33311



**ROOSEVELT GLENN
1200-1241 NW 12TH AVENUE
FT. LAUDERDALE FL. 33311**

Video Fed to Everglade Heights

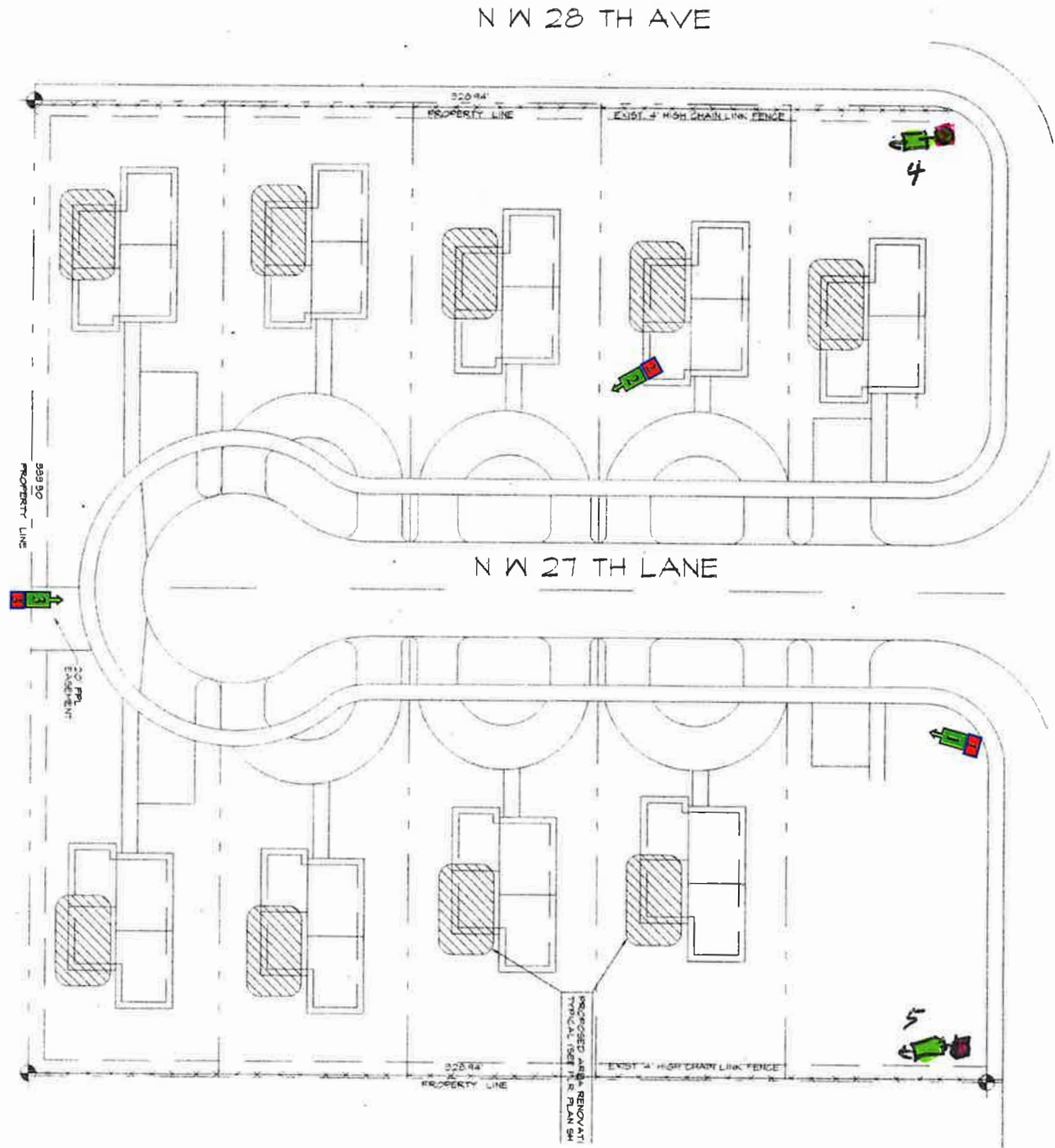
5 ← 5MP Fixed 2.8mm Lens

5 ■ Transmitters

1 ■ Receiver

5 Pole Mounts

UPS Power Supply



Camera# ROOSEVELT GLENN SINGLE FAMILY HOMES - CAMERA LOCATIONS AS NOTED ON DRAWINGS

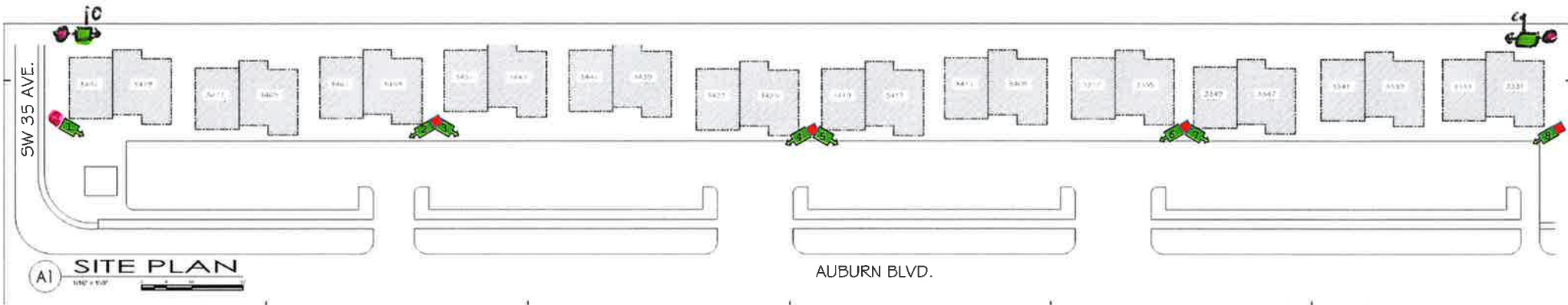
1. 2.8mm fixed lens, pole mounted bullet camera located at East side of entrance facing South
2. 2.8mm fixed lens, pole mounted bullet camera located at SE corner of lot number 2 facing SE
3. 2.8mm fixed lens, pole mounted bullet camera located at South end of NW 27th Lane facing North.
4. 2.8 mm fixed lens pole mounted bullet camera located at the SW property line
5. 2.8 mm fixed lens pole mounted bullet camera located at the SE property line

AUBURN GARDENS TOWNHOMES

3400 Auburn Boulevard Fort Lauderdale, FL 33312



AUBURN GARDENS TOWNHOUSES
 3400 Auburn Boulevard Fort Lauderdale, FL 33312



- Video Fed to Everglade Heights
- 5MP Fixed 2.8mm Lens
- Transmitters
- 8 Pole Mounts
- UPS Power Supply



Camera #

AUBURN GARDENS TOWNHOMES - CAMERA LOCATIONS AS NOTED ON DRAWINGS

1. 2.8mm fixed lens, pole mounted bullet camera located at the SW corner of building 3481
2. 2.8mm fixed lens, pole mounted bullet camera located at the South end between buildings 3459 and 3451 facing SW
3. 2.8mm fixed lens, pole mounted bullet camera located at the South end between buildings 3459 and 3451 facing SE
4. 2.8mm fixed lens, pole mounted bullet camera located at the South end between buildings 3425 and 3419 facing SW
5. 2.8mm fixed lens, pole mounted bullet camera located at the South end between buildings 3425 and 3419 facing SE
6. 2.8mm fixed lens, pole mounted bullet camera located at the South end between buildings 3355 and 3349 facing SW
7. 2.8mm fixed lens, pole mounted bullet camera located at the South end between buildings 3425 and 3419 facing SE
8. 2.8mm fixed lens, pole mounted bullet camera located at the SW corner of building 3331 Facing SW
9. 2.8 mm fixed lens pole mounted bullet camera located at the NE corner of property line
10. 2.8 mm fixed lens pole mounted bullet camera located at the NW corner of property line