

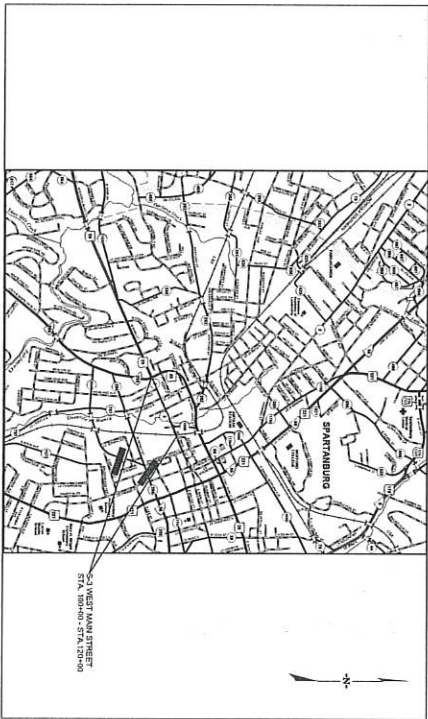
INDEX OF SHEETS

SHEET NO.	DESCRIPTION	SHEET SUBTOTALS
1	TITLE SHEET	1
2A	GENERAL ESTIMATED QUANTITIES	1
3A-3B	DEMOLITION AND MOVING ITEMS SHEET	2
4	TYPICAL SECTIONS STANDARD DETAILS	1
5	PROFIC-TO-PLAN DATA SHEET	1
5A	GENERAL NOTES AND LEGEND	1
5B	GENERAL NOTES	1
5C	INDEX LAYOUT OF SHEETS	2
6-12	ROADWAY PLANS AND PROFILES	7
20-21	MECHANICAL DETAILS	2
22-27	CURB RAMP DETAILS	6
DR-10B	DRAINAGE PLANS AND PROFILES	5
DR-10C	DRAINAGE PLANS AND PROFILES	5
EC-1	EROSION CONTROL DATA SHEET	1
TC-1-7C	TRAFFIC CONTROL PLANS	1
LA	LANDSCAPE DETAILS AND SCHEDULE	OMITTED
PAH-PAG	PAVEMENT MARKING PLANS AND DETAILS	5
SM-1-45	UTILITY RELOCATION DATA SHEET	5
X-1-28	CROSS SECTIONS (MAIN LINE)	8
TOTAL		78



PROPOSED PLANS

FOR
 WEST MAIN STREET STREETSCAPE
 PHASE 1
 CITY OF SPARTANBURG
 S-3 (WEST MAIN ST)
 FROM JOHN B. WHITE SR. BLVD (SC 296)
 TO ST JOHN ST. (S-1088)



LAYOUT
 N.T.S.

CITY OF SPARTANBURG, SC

NET LENGTH OF ROADWAY	W MAIN ST 0.33M MILES
NET LENGTH OF BRIDGES	0.00M MILES
NET LENGTH OF PROJECT	0.33M MILES
LENGTH OF EXCEPTIONS	0.00M MILES
GROSS LENGTH OF PROJECT	0.33M MILES
EQUA/LINES IN STATIONING	NONE

NOTE: EXCEPT AS MAY OTHERWISE BE SPECIFIED ON THE PLANS OR IN THE SPECIAL PROVISIONS, ALL MATERIALS AND WORKMANSHIP ON THIS PROJECT SHALL COMPLY WITH THE SPECIFICATIONS FOR HIGHWAY CONSTRUCTION (2007 EDITION) AND THE STANDARD DRAWINGS FOR ROAD CONSTRUCTION IN EFFECT AT THE TIME OF LETTING.

TRAFFIC DATA
 2022 ADT MAIN ST: 6000
 ADT ST JOHN ST: 100
 TRUCKS 2%

3 DAVIS BEFORE DIGGING IN
 SOUTH CAROLINA
 CALL 811
 WWW.SCAR11.COM
 ALL UTILITIES MAY NOT BE A MEMBER OF SC11

RAILROAD INTERFERENCE?
 YES NO

ENVIRONMENTAL PERMIT INFORMATION

USAGE PERMIT	YES	X	NO
NEPA DOCUMENT	YES	X	NO
401 CERTIFICATION	YES	X	NO
ODRM O&P	YES	X	NO
NAVIGABLE WATERS	SC	USACE	X



NPDES PERMIT INFORMATION

Disturbed Area = 1.48 Acres (Ae)(d)
 Project Area = 4.32 Acres (Ae)(f)

Approximate Location of Roadway/Is Right-of-Way

Begin Latitude 34° 58' 47" N
 Longitude 81° 56' 32" W

End Latitude 34° 58' 52" N
 Longitude 81° 56' 17" W

Hydraulic and NPDES Design provided by: ACCOIA

SCOPE REVIEW	RIGHT-OF-WAY	CONSTRUCTION
PRECONSTRUCTION SUPPORT - MOUD	NO	NO
PRECONSTRUCTION SUPPORT - STRUCTURES		
PRE-DESIGN MANAGER		
PRE-PROGRAM MANAGER		

THE INITIALS ABOVE DO NOT RELIEVE THE ENGINEER OF RECORD OF THE RESPONSIBILITY TO DESIGN THIS PROJECT IN ACCORDANCE WITH ALL APPLICABLE ORDINANCES.

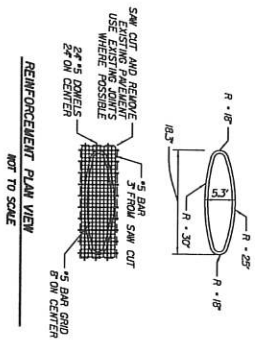
For Right Of Way Acquisition:

Consultant Engineer of Record _____ Date _____
 Regional Production Engineer _____ Date _____

ENGINEER OF RECORD

FOR CONSTRUCTION: _____ DATE _____

All drawings are instruments of professional service. Reuse or alteration is at the user's sole risk.



TOOLE
 DESIGN

NO.	DATE	BY	DESCRIPTION OF REVISION
1		JME	
2			
3			
4			

Preliminary Not for Construction
 WEST MAIN STREET
 SPARTANBURG, SC
 TYPICAL SECTIONS
 SCALE 1"= 12'
 SHEET NO. 3B



GENERAL CONSTRUCTION NOTES

11/20/2006 05:58:54 P:\Work Files\Great Final Design\PROJECT\CONTRACT\PLAN\11_05_06\0001_16_001.dwg

ITEM NO.	DESCRIPTION	QUANTITY	PAY UNIT	USE DESCRIPTION
1031000	MOBILIZATION	LS 1		PER CONTRACT DOCUMENTS
1032010	GRADING AND FINISHING	LS 1		PER CONTRACT DOCUMENTS
1068000	CONSTRUCTION STRIKES, LINES & GRADES	EA 1		PER CONTRACT DOCUMENTS
1071000	TRAFFIC CONTROL	EA 1		PER CONTRACT DOCUMENTS
1072000	TRAFFIC CONTROL	EA 1		PER CONTRACT DOCUMENTS
1073000	TRAFFIC CONTROL	EA 1		PER CONTRACT DOCUMENTS
2004100	REMOVAL & DISPOSAL OF EXISTING CURB	LS 1		WHERE DIRECTED BY ENGINEER
2004200	REMOVAL & DISPOSAL OF EXISTING CURB	LS 1		WHERE DIRECTED BY ENGINEER
2004300	REMOVAL & DISPOSAL OF EXISTING CURB	LS 1		WHERE DIRECTED BY ENGINEER
2004400	REMOVAL & DISPOSAL OF EXISTING CURB	LS 1		WHERE DIRECTED BY ENGINEER
2004500	REMOVAL & DISPOSAL OF EXISTING CURB	LS 1		WHERE DIRECTED BY ENGINEER
2004600	REMOVAL & DISPOSAL OF EXISTING CURB	LS 1		WHERE DIRECTED BY ENGINEER
2004700	REMOVAL & DISPOSAL OF EXISTING CURB	LS 1		WHERE DIRECTED BY ENGINEER
2004800	REMOVAL & DISPOSAL OF EXISTING CURB	LS 1		WHERE DIRECTED BY ENGINEER
2004900	REMOVAL & DISPOSAL OF EXISTING CURB	LS 1		WHERE DIRECTED BY ENGINEER
2005000	REMOVAL & DISPOSAL OF EXISTING CURB	LS 1		WHERE DIRECTED BY ENGINEER
2005100	REMOVAL & DISPOSAL OF EXISTING CURB	LS 1		WHERE DIRECTED BY ENGINEER
2005200	REMOVAL & DISPOSAL OF EXISTING CURB	LS 1		WHERE DIRECTED BY ENGINEER
2005300	REMOVAL & DISPOSAL OF EXISTING CURB	LS 1		WHERE DIRECTED BY ENGINEER
2005400	REMOVAL & DISPOSAL OF EXISTING CURB	LS 1		WHERE DIRECTED BY ENGINEER
2005500	REMOVAL & DISPOSAL OF EXISTING CURB	LS 1		WHERE DIRECTED BY ENGINEER
2005600	REMOVAL & DISPOSAL OF EXISTING CURB	LS 1		WHERE DIRECTED BY ENGINEER
2005700	REMOVAL & DISPOSAL OF EXISTING CURB	LS 1		WHERE DIRECTED BY ENGINEER
2005800	REMOVAL & DISPOSAL OF EXISTING CURB	LS 1		WHERE DIRECTED BY ENGINEER
2005900	REMOVAL & DISPOSAL OF EXISTING CURB	LS 1		WHERE DIRECTED BY ENGINEER
2006000	REMOVAL & DISPOSAL OF EXISTING CURB	LS 1		WHERE DIRECTED BY ENGINEER
2006100	REMOVAL & DISPOSAL OF EXISTING CURB	LS 1		WHERE DIRECTED BY ENGINEER
2006200	REMOVAL & DISPOSAL OF EXISTING CURB	LS 1		WHERE DIRECTED BY ENGINEER
2006300	REMOVAL & DISPOSAL OF EXISTING CURB	LS 1		WHERE DIRECTED BY ENGINEER
2006400	REMOVAL & DISPOSAL OF EXISTING CURB	LS 1		WHERE DIRECTED BY ENGINEER
2006500	REMOVAL & DISPOSAL OF EXISTING CURB	LS 1		WHERE DIRECTED BY ENGINEER
2006600	REMOVAL & DISPOSAL OF EXISTING CURB	LS 1		WHERE DIRECTED BY ENGINEER
2006700	REMOVAL & DISPOSAL OF EXISTING CURB	LS 1		WHERE DIRECTED BY ENGINEER
2006800	REMOVAL & DISPOSAL OF EXISTING CURB	LS 1		WHERE DIRECTED BY ENGINEER
2006900	REMOVAL & DISPOSAL OF EXISTING CURB	LS 1		WHERE DIRECTED BY ENGINEER
2007000	REMOVAL & DISPOSAL OF EXISTING CURB	LS 1		WHERE DIRECTED BY ENGINEER
2007100	REMOVAL & DISPOSAL OF EXISTING CURB	LS 1		WHERE DIRECTED BY ENGINEER
2007200	REMOVAL & DISPOSAL OF EXISTING CURB	LS 1		WHERE DIRECTED BY ENGINEER
2007300	REMOVAL & DISPOSAL OF EXISTING CURB	LS 1		WHERE DIRECTED BY ENGINEER
2007400	REMOVAL & DISPOSAL OF EXISTING CURB	LS 1		WHERE DIRECTED BY ENGINEER
2007500	REMOVAL & DISPOSAL OF EXISTING CURB	LS 1		WHERE DIRECTED BY ENGINEER
2007600	REMOVAL & DISPOSAL OF EXISTING CURB	LS 1		WHERE DIRECTED BY ENGINEER
2007700	REMOVAL & DISPOSAL OF EXISTING CURB	LS 1		WHERE DIRECTED BY ENGINEER
2007800	REMOVAL & DISPOSAL OF EXISTING CURB	LS 1		WHERE DIRECTED BY ENGINEER
2007900	REMOVAL & DISPOSAL OF EXISTING CURB	LS 1		WHERE DIRECTED BY ENGINEER
2008000	REMOVAL & DISPOSAL OF EXISTING CURB	LS 1		WHERE DIRECTED BY ENGINEER
2008100	REMOVAL & DISPOSAL OF EXISTING CURB	LS 1		WHERE DIRECTED BY ENGINEER
2008200	REMOVAL & DISPOSAL OF EXISTING CURB	LS 1		WHERE DIRECTED BY ENGINEER
2008300	REMOVAL & DISPOSAL OF EXISTING CURB	LS 1		WHERE DIRECTED BY ENGINEER
2008400	REMOVAL & DISPOSAL OF EXISTING CURB	LS 1		WHERE DIRECTED BY ENGINEER
2008500	REMOVAL & DISPOSAL OF EXISTING CURB	LS 1		WHERE DIRECTED BY ENGINEER
2008600	REMOVAL & DISPOSAL OF EXISTING CURB	LS 1		WHERE DIRECTED BY ENGINEER
2008700	REMOVAL & DISPOSAL OF EXISTING CURB	LS 1		WHERE DIRECTED BY ENGINEER
2008800	REMOVAL & DISPOSAL OF EXISTING CURB	LS 1		WHERE DIRECTED BY ENGINEER
2008900	REMOVAL & DISPOSAL OF EXISTING CURB	LS 1		WHERE DIRECTED BY ENGINEER
2009000	REMOVAL & DISPOSAL OF EXISTING CURB	LS 1		WHERE DIRECTED BY ENGINEER
2009100	REMOVAL & DISPOSAL OF EXISTING CURB	LS 1		WHERE DIRECTED BY ENGINEER
2009200	REMOVAL & DISPOSAL OF EXISTING CURB	LS 1		WHERE DIRECTED BY ENGINEER
2009300	REMOVAL & DISPOSAL OF EXISTING CURB	LS 1		WHERE DIRECTED BY ENGINEER
2009400	REMOVAL & DISPOSAL OF EXISTING CURB	LS 1		WHERE DIRECTED BY ENGINEER
2009500	REMOVAL & DISPOSAL OF EXISTING CURB	LS 1		WHERE DIRECTED BY ENGINEER
2009600	REMOVAL & DISPOSAL OF EXISTING CURB	LS 1		WHERE DIRECTED BY ENGINEER
2009700	REMOVAL & DISPOSAL OF EXISTING CURB	LS 1		WHERE DIRECTED BY ENGINEER
2009800	REMOVAL & DISPOSAL OF EXISTING CURB	LS 1		WHERE DIRECTED BY ENGINEER
2009900	REMOVAL & DISPOSAL OF EXISTING CURB	LS 1		WHERE DIRECTED BY ENGINEER
2010000	REMOVAL & DISPOSAL OF EXISTING CURB	LS 1		WHERE DIRECTED BY ENGINEER

PROJECT CONTRACTS	NAME	RESPONSE

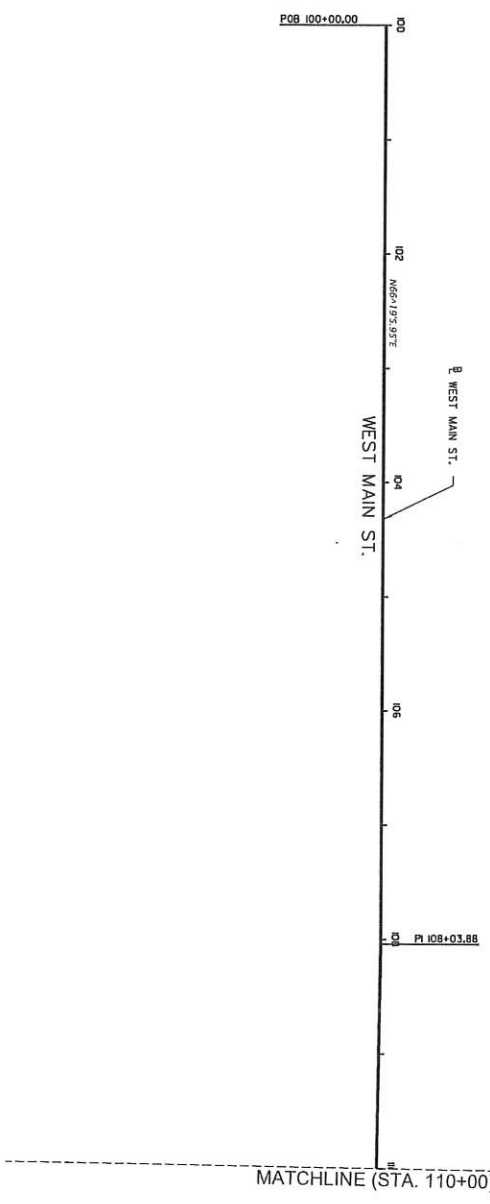
NOTE: INDIVIDUAL QUANTITIES ARE NOT SHOWN IN DETAIL ON THE PLANS BUT ARE INCLUDED IN THE SUMMARY OF ESTIMATED QUANTITIES AND MAY BE ADJUSTED DURING CONSTRUCTION AS DIRECTED BY THE ENGINEER.

SEE INDIVIDUAL CURVES ON RESURFACING DATA SHEET FOR SURFACE ELEVATION RATE AND DESIGN SPEED, AS APPLICABLE.

THE DEPUTY SECRETARY FOR ENGINEERING MUST SPECIFICALLY AUTHORIZE CHANGES INVOLVING INCREASED COST OF THE PROJECT OR CHANGES IN ALIGNMENT. THE DISTRICT ENGINEERING ADMINISTRATION IS PERMITTED UNDER THE DIRECTION OF THE DEPUTY SECRETARY FOR ENGINEERING TO AUTHORIZE MINOR ALTERATIONS NOT IN CONFLICT WITH THE GENERAL PRINCIPLES OF THE DEPARTMENT. FORWARD INFORMATION ON ANY PROPOSED CHANGES IN ALIGNMENT TO THE DISTRICT ENGINEERING DIVISION FOR REVIEW.

USER: 03
 PATH: \\server\projects\03\030000\030000.dwg
 DATE: 03/03/03

BASELINE GEOMETRY INFORMATION			
WEST MAIN ST.			
POINT	STATION	NORTHING	EASTING
POB	100+00.00	1133776.3550	177487.8577
PI	108+03.88	1134099.2375	178224.0439
PI	111+35.98	1134228.0375	178550.4653
PI	111+58.16	1134233.8046	178551.5660
POE	120+00.00	1134956.0603	178327.1785



DESIGNED BY: NAD 83(2011) SOUTH CAROLINA STATE PLANE
 VERTICAL: NAVD 83
 ALL POINTS ARE GROUND POINTS

All drawings are instruments of professional service. Reuse of alteration is at the user's sole risk.

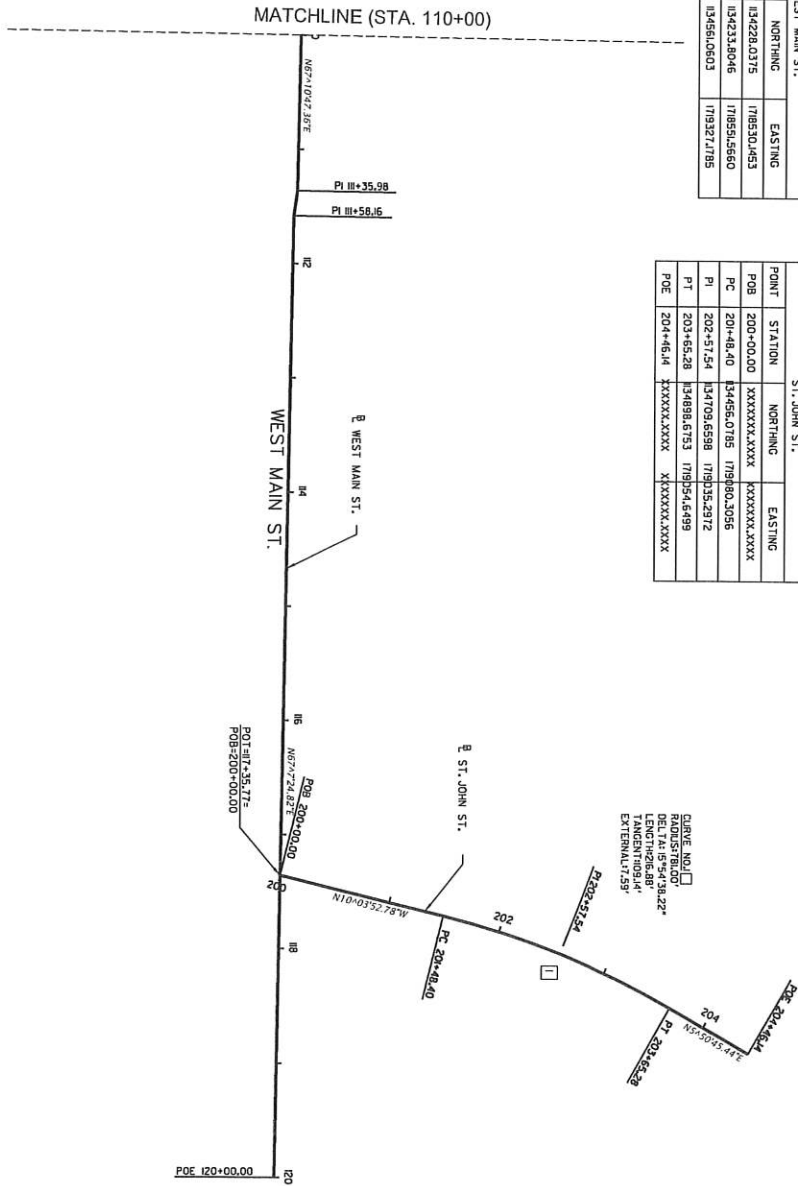
TOOLE
 DESIGN

NO.	DATE	BY	CHKD.	DESCRIPTION OF REVISION
1				
2				
3				
4				

Preliminary Not for Construction
 WEST MAIN STREET
 SPARTANBURG, SC
 REFERENCE DATA SHEET
 1 OF 2
 SCALE: 1" = 50'
 SHEET NO. 28

BASELINE GEOMETRY INFORMATION				
WEST MAIN ST.				
POINT	STATION	NORTHING	EASTING	
PI	III+35.98	134228.0375	178530.4953	
PI	III+58.46	134233.8046	178531.5660	
POE	120+00.00	134561.0603	179327.7785	

BASELINE GEOMETRY INFORMATION				
ST. JOHN ST.				
POINT	STATION	NORTHING	EASTING	
POB	200+00.00	XXXXXXXX.XXXX	XXXXXXXX.XXXX	
PC	204+48.40	134455.0785	179180.3056	
PI	202+57.54	134709.6598	179135.2972	
PT	203+55.28	134698.6753	179154.6499	
POE	204+61.14	XXXXXXXX.XXXX	XXXXXXXX.XXXX	



All drawings are instruments of professional service. Reuse or alteration is at the user's sole risk.

TOOLE
 DESIGN

REV.	DATE	BY	DESCRIPTION OF REVISION
1			
2			
3			
4			

Preliminary Not for Construction

WEST MAIN STREET
 SPARTANBURG, SC

REFERENCE DATA SHEET
 2 OF 2

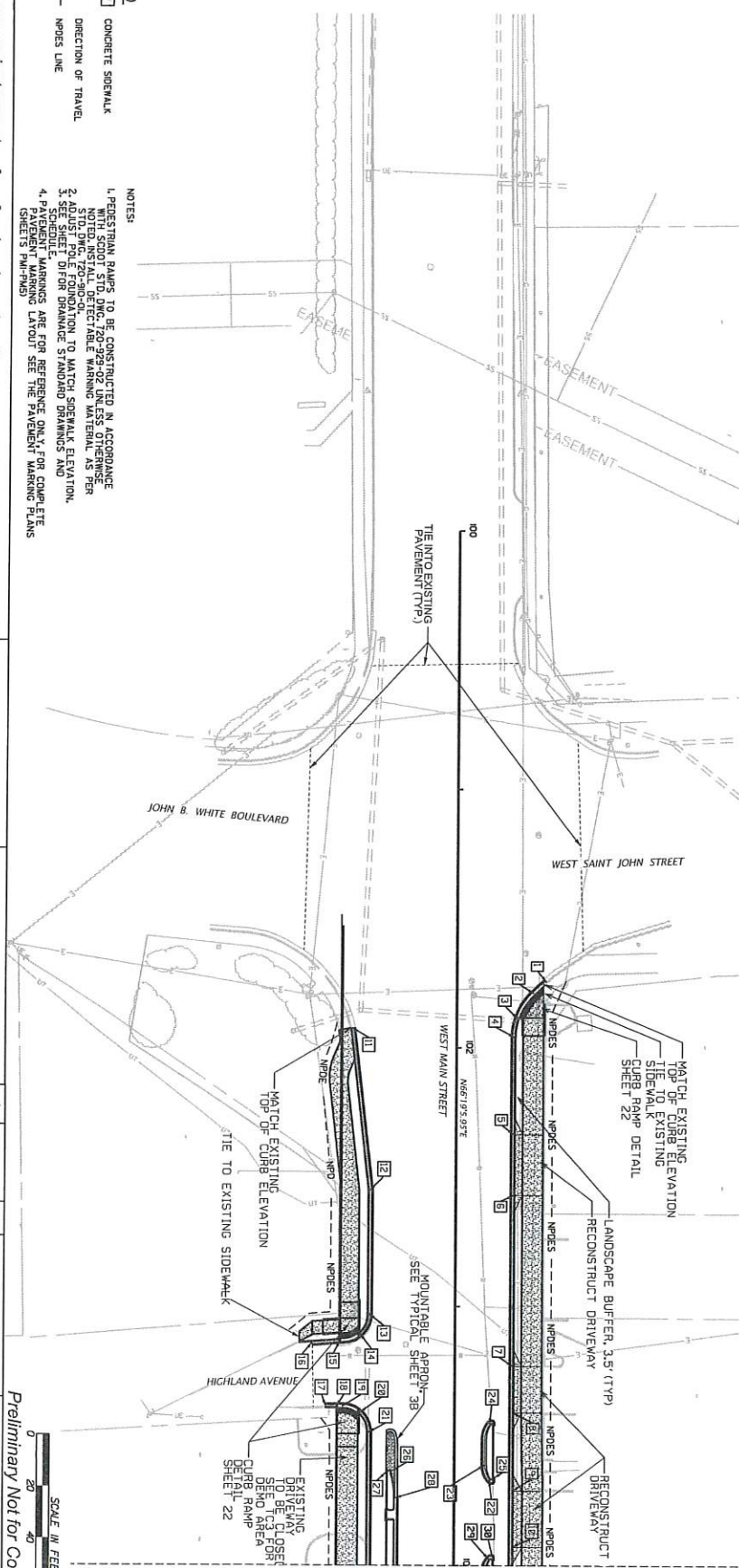
SCALE: 1" = 80'

SHEET NO. 5C

UTILITY
 AT&T
 SPECTRUM
 SPARTANBURG WATER & SEWER
 PEDESTAL NATURAL GAS
 DUKE ENERGY

CONTACT
 LEE SADIEN, 704-478-7917
 LARRY CAMP, 864-588-0817
 KEVIN SMITH, 864-580-5849
 THOMAS PRESSLEY, 864-775-0744
 GARY FOWLER, 864-048-5579

FACE OF CURB DATA											
POINT	STATION	OFFSET	L/RT	POINT	STATION	OFFSET	L/RT	POINT	STATION	OFFSET	L/RT
1	101+72.38	-35.00	LT	11	6	-40.88	RT	21	9	33.50	RT
2	101+78.87	-30.04	LT	12	0	33.50	RT	22	1	-13.67	LT
3	101+88.71	-23.66	LT	13	6	33.50	RT	23	8	-12.00	LT
4	101+95.91	-22.50	LT	14	6	37.00	RT	24	6	-13.67	LT
5	102+33.42	-22.50	LT	15	6	44.50	RT	25	6	-15.50	LT
6	102+56.92	-22.50	LT	16	9	55.50	RT	26	2	24.54	RT
7	103+22.86	-22.50	LT	17	3	50.19	RT	27	2	26.50	RT
8	103+40.89	-22.50	LT	18	4	46.00	RT	28	0	23.00	RT
9	103+71.18	-22.50	LT	19	9	43.71	RT	29	9	-13.67	LT
10	103+93.02	-22.50	LT	20	9	37.00	RT	30	4	-15.50	LT



- LEGEND
- CONCRETE SIDEWALK
 - DIRECTION OF TRAVEL
 - NPDES LINE
- NOTES:
1. PERFORM RAMP TO BE CONSTRUCTED IN ACCORDANCE WITH SCOTL STD. Dwg. 720-929-02 AND ASS. SPECIFICATIONS.
 2. ADJUST RAMP ELEVATION TO MATCH SIDEWALK ELEVATION.
 3. SEE SHEET 1 OF 5 FOR DRAINAGE STANDARD DRAWINGS AND PAVEMENT MARKING LAYOUT SEE THE PAVEMENT MARKING PLANS SHEET 5 (M-F-M).
 4. PAVEMENT MARKINGS ARE FOR REFERENCE ONLY FOR COMPLETE SHEET 5 (M-F-M).

TOOLE
 DESIGN

NO.	DATE	DESCRIPTION
1		
2		
3		
4		

SCALE: 1" = 20'

PRELIMINARY NOT FOR CONSTRUCTION

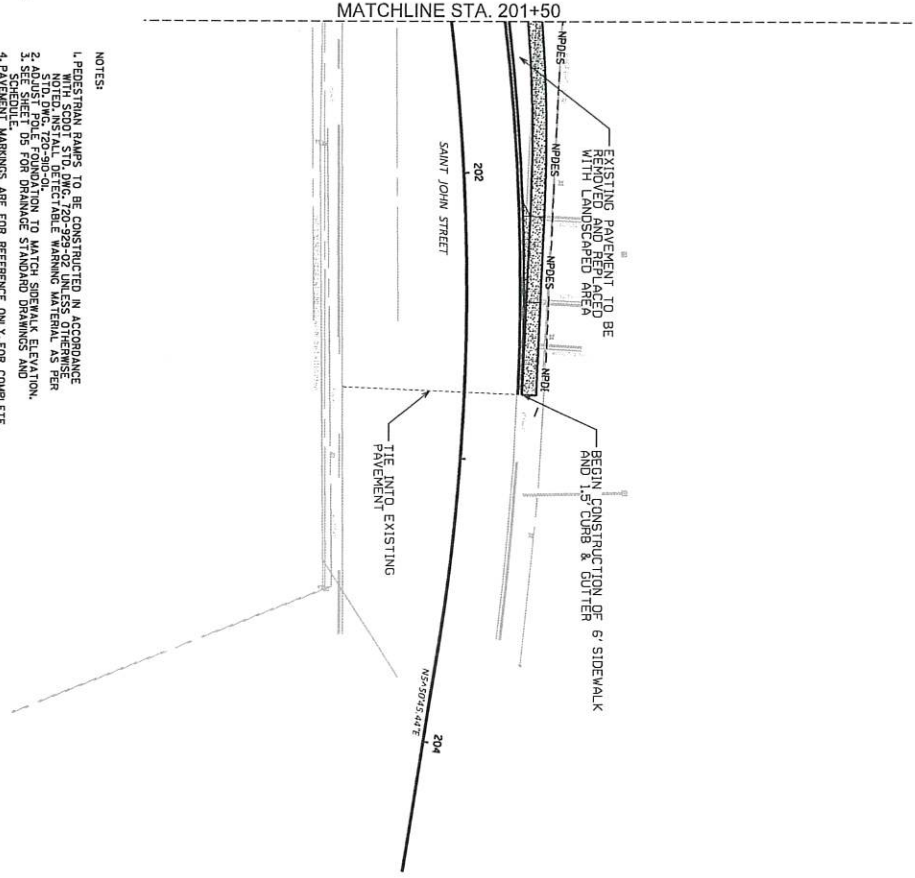
WEST MAIN STREET
 SPARTANBURG, SC

ROADWAY PLAN
 SHEET 1 OF 5

SHEET NO. 6

STATE	COUNTY	PROJECT NO.	SHEET NO.
SC	SPARTANBURG	117-488.75	5 OF 5

POINT	STATION	OFFSET	L/RT
1	117+88.75	-274.51	L/T



LEGEND

CONCRETE SIDEWALK

DIRECTION OF TRAVEL

NPDES LINE

- NOTES:**
1. PEDESTRIAN RAMPS TO BE CONSTRUCTED IN ACCORDANCE WITH ADA REQUIREMENTS.
 2. AS SHOWN, 20'-9" O.C. STODING, 20'-9" O.C. STODING, TO BE INSTALLED. DETECTABLE WARNING MATERIAL AS PER SCHEDULE.
 3. SEE SHEET DS FOR DRAINAGE STANDARD DRAWINGS AND PAVEMENT MARKINGS ARE FOR REFERENCE ONLY FOR COMPLETE PAVEMENT LAYOUT. SEE THE PAVEMENT MARKING PLANS (SHEET'S PM-PMS).

All drawings are instruments of professional service. Reuse or alteration is at the user's sole risk.



NO.	DATE	BY	DESCRIPTION OF REVISION
1			
2			
3			
4			

SCALE 1" = 20'

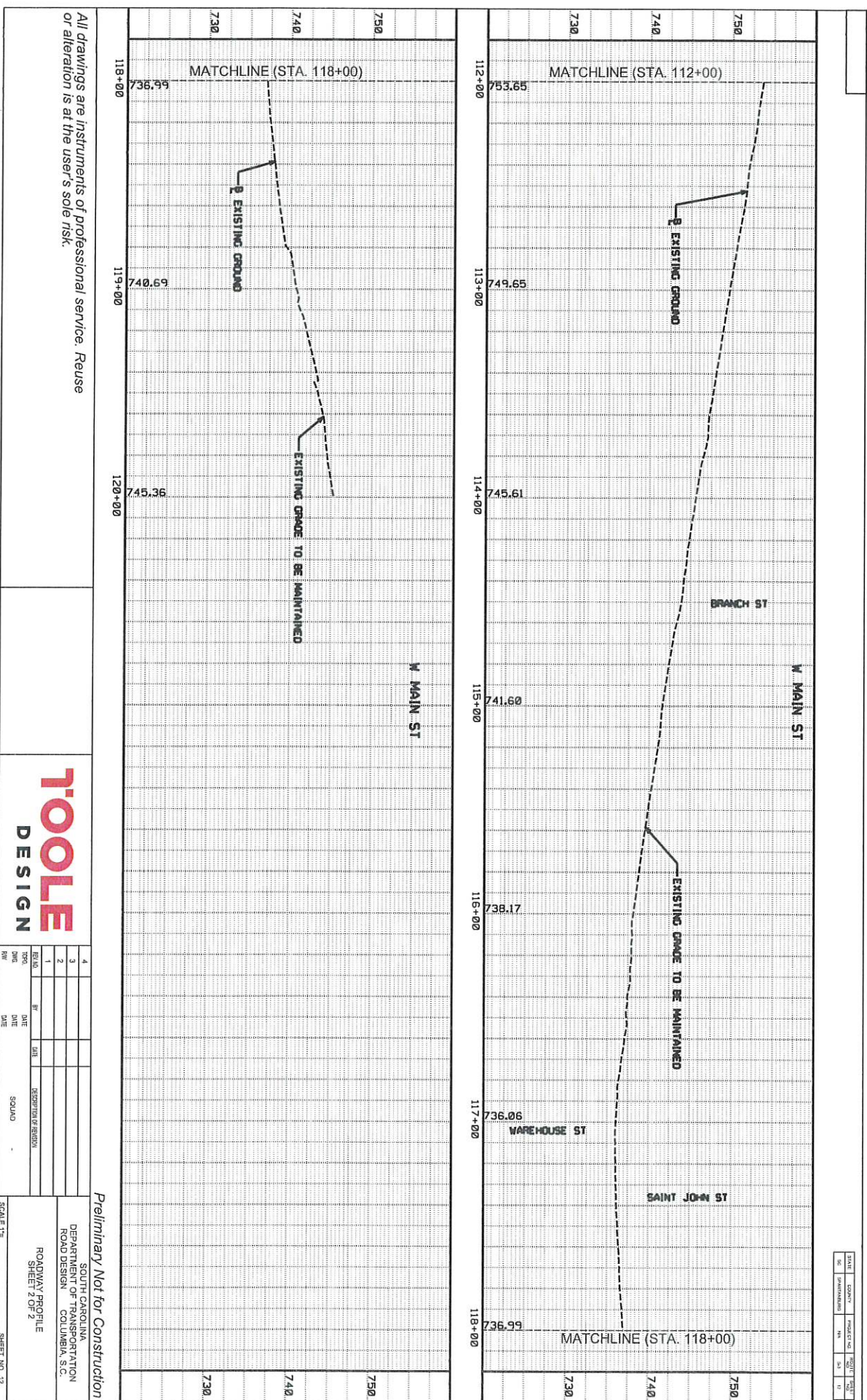
WEST MAIN STREET
SPARTANBURG, SC

ROADWAY PLAN
SHEET 5 OF 5

SHEET NO. 10

Preliminary Not for Construction

All drawings are instruments of professional service. Reuse or alteration is at the user's sole risk.



STATE	COUNTY	PROJECT NO.	SHEET NO.
NC	PERDUE	NA	53



REV. NO.	DATE	DESCRIPTION OF REVISION
4		
3		
2		
1		

SCALE: 1" = 12'
 ROADWAY PROFILE
 SHEET 2 OF 2
 SHEET NO. 12

Preliminary Not for Construction

SOUTH CAROLINA
 DEPARTMENT OF TRANSPORTATION
 ROAD DESIGN
 COLUMBIA, S.C.

USER #
 PROJECT #
 SHEET #

All drawings are instruments of professional service. Reuse or alteration is at the user's sole risk.

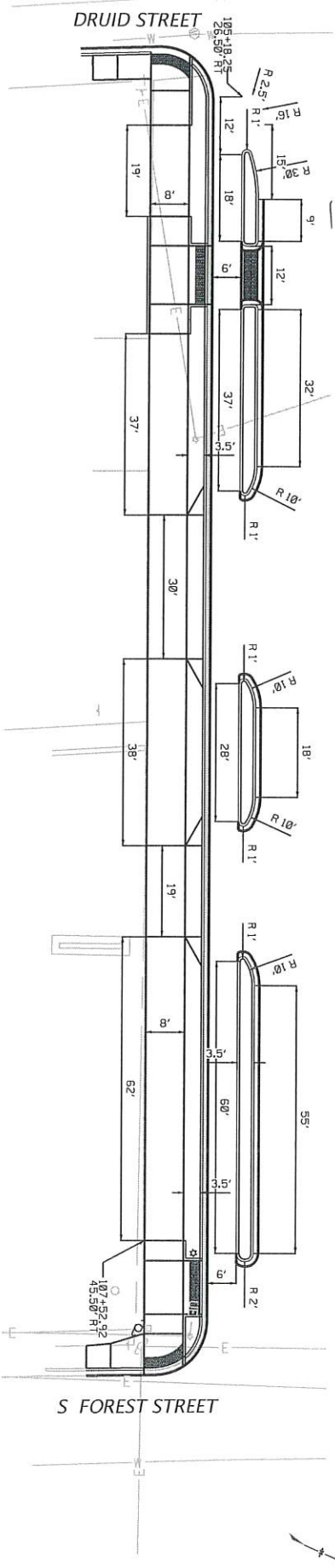


TOOLE
 DESIGN

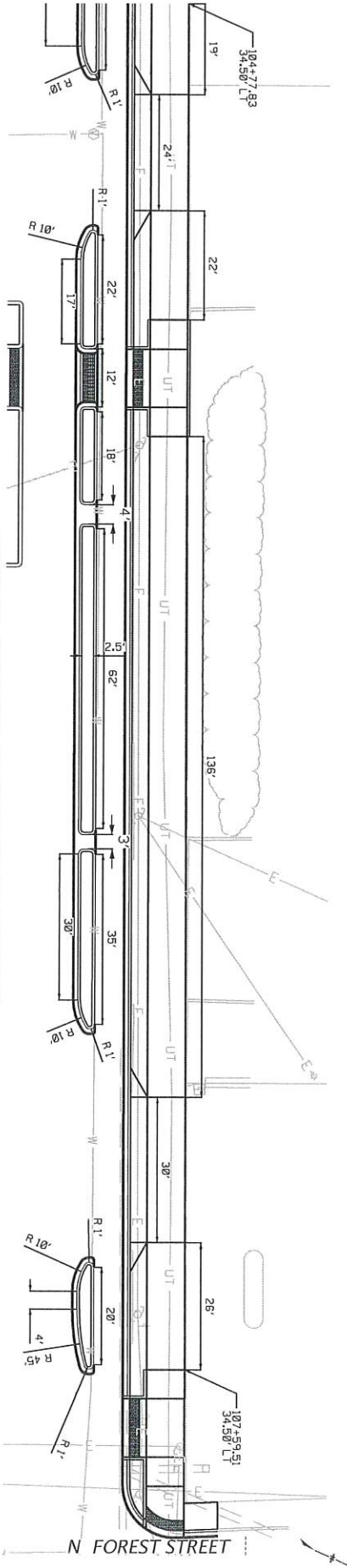
NO.	DATE	BY	CHK	DESCRIPTION
1				
2				
3				
4				

SCALE 1" = 10'
 SHEET NO. 14
 WEST MAIN STREET
 SPARTANBURG, SC
 SIDEWALK DETAILS
 SHEET 2 OF 7

W. MAIN ST. BETWEEN DRUID ST. & S. FOREST ST.
 SOUTH SIDE



W. MAIN ST. BETWEEN W. SAINT JOHN ST. & N. FOREST ST.
 NE QUADRANT



DATE	COMPUTER	PROJECT NO.	SHEET NO.

Preliminary Not for Construction

##user##
 #####path#####filename#####
 ##date##

All drawings are instruments of professional service. Reuse or alteration is at the user's sole risk.



TOOLE
 DESIGN

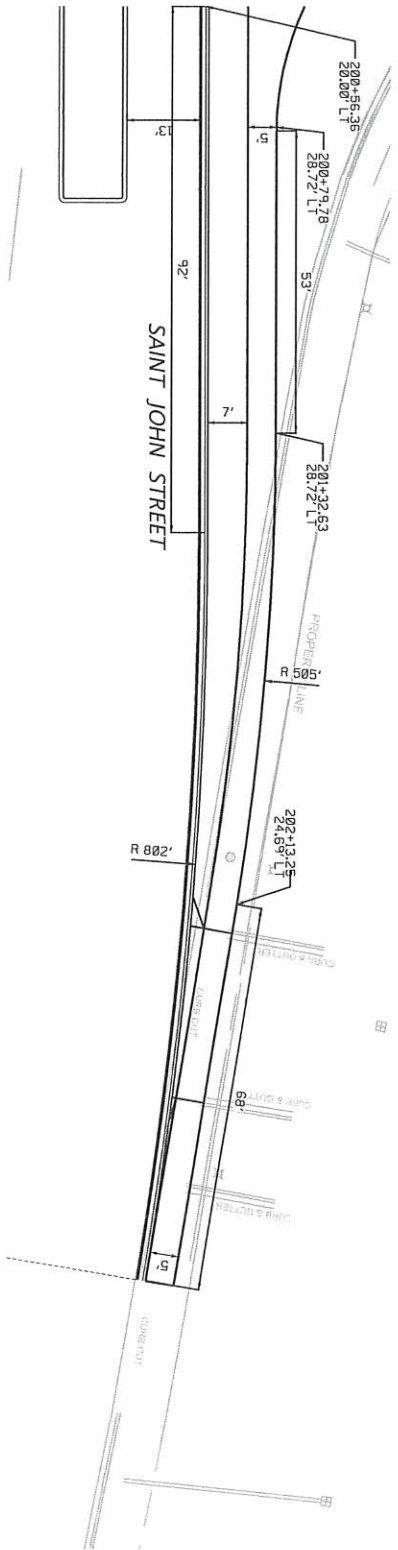
NO.	DATE	BY	DESCRIPTION OF REVISION
1			
2			
3			
4			

SCALE 1" = 10'
 SHEET NO. 19

Preliminary Not for Construction

WEST MAIN STREET
 SPARTANBURG, SC
 SIDEWALK DETAILS
 SHEET OF 7

SAINT JOHN ST.
 NORTH OF WEST MAIN ST.



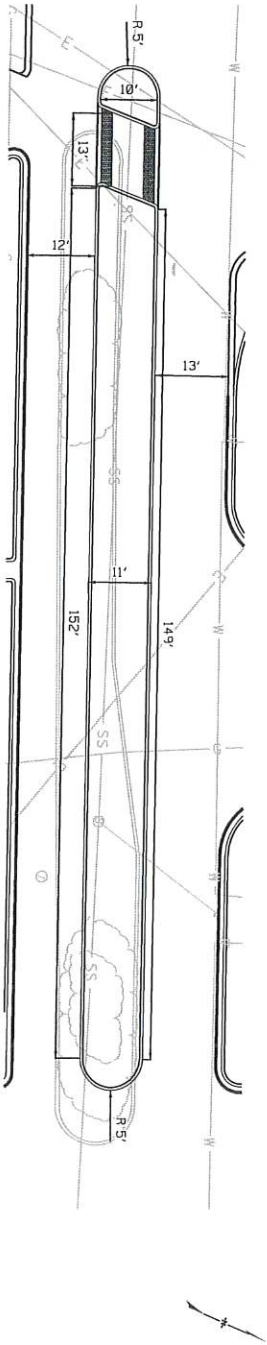
DATE	COMPT	PROJECT NO.	TITLE
01/11/2011	SPARTANBURG	1000	WEST MAIN STREET

#####

All drawings are instruments of professional service. Reuse or alteration is at the user's sole risk.



W. MAIN ST. EAST OF SAINT JOHN ST.
CENTER MEDIAN



Preliminary Not for Construction

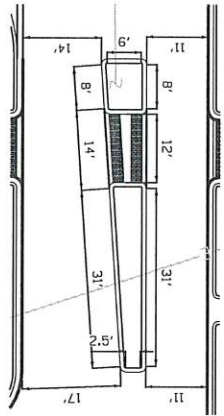
WEST MAIN STREET
SPARTANBURG, SC

MEDIAN DETAILS
SHEET 1 OF 2

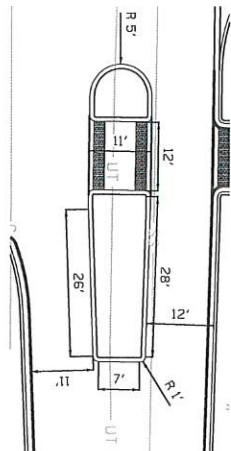
SCALE 1" = 10' SHEET NO. 20

TOOLE
DESIGN

NO.	DATE	BY	DESCRIPTION
4			
3			
2			
1			



W. MAIN ST. BETWEEN DRUID ST. & N. FOREST ST.
NW QUADRANT

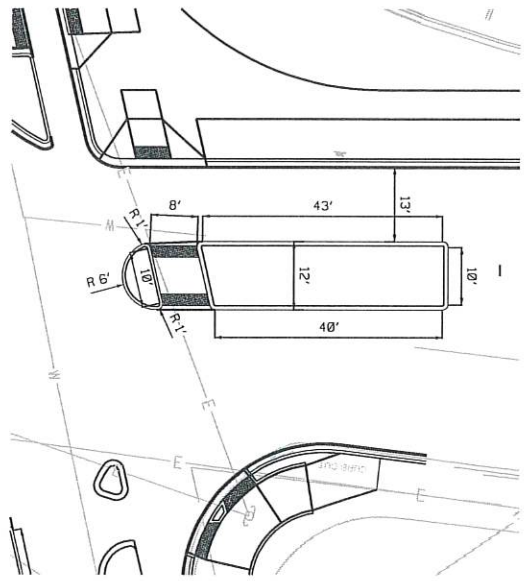
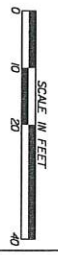


W. MAIN ST. BETWEEN N. WALKER ST. & BRANCH ST.
NW QUADRANT

DATE	QUANT	PROJECT NO.	TITLE
SC	SPARTANBURG	NA	SA

 #####
 #####

All drawings are instruments of professional service. Reuse or alteration is at the user's sole risk.



SAINT JOHN ST. AT MAIN ST.
 NORTH SIDE

TOOLE
 DESIGN

NO.	DATE	BY	DESCRIPTION
4			
3			
2			
1			

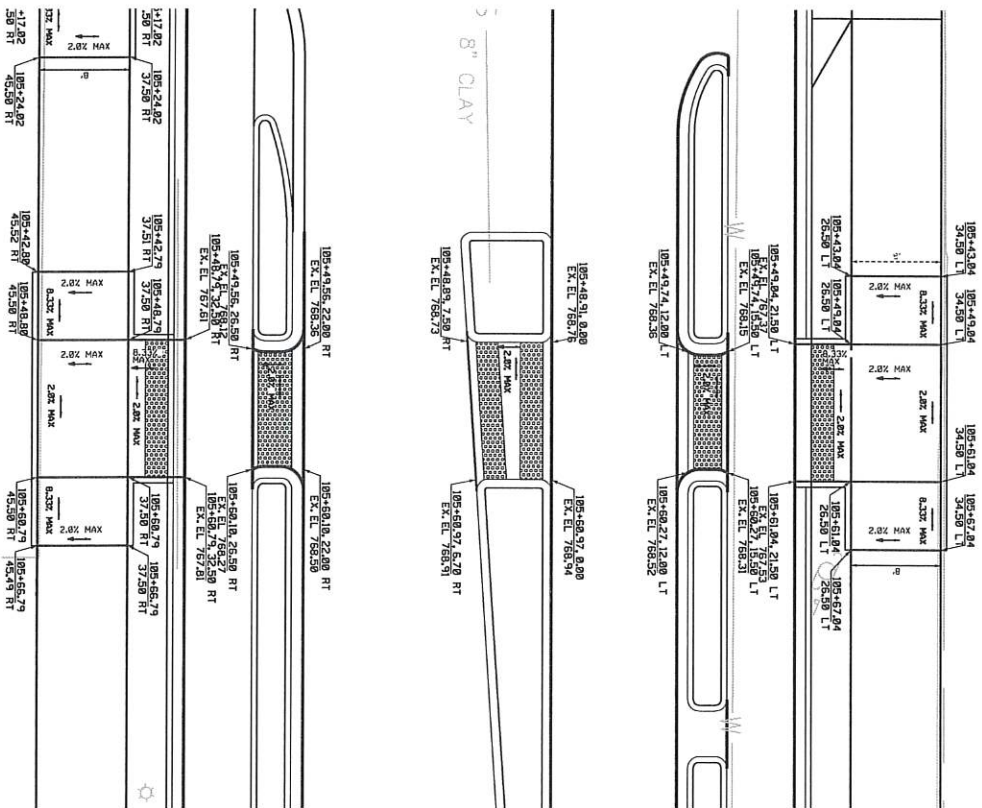
WEST MAIN STREET
 SPARTANBURG, SC
 MEDIAN DETAILS
 SHEET 2 OF 2
 SCALE 1"=10'
 SHEET NO. 21

Preliminary Not for Construction

DATE	COUNTY	PROJECT NO.	TITLE	SHEET
01/20/2021	SPARTANBURG	2021-001	WEST MAIN STREET	21

All drawings are instruments of professional service. Reuse or alteration is at the user's sole risk.

CROSSING ON W. MAIN ST. EAST OF DRUID ST.



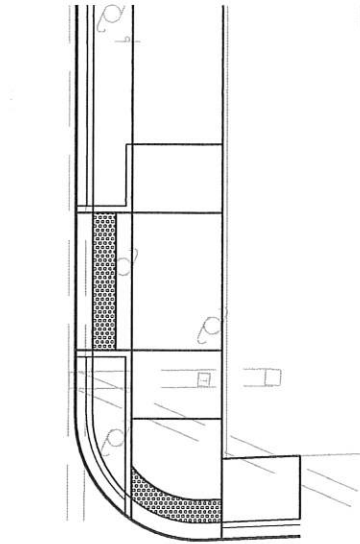
TOOLE
DESIGN

NO.	DATE	BY	DESCRIPTION/REVISION
1			
2			
3			
4			

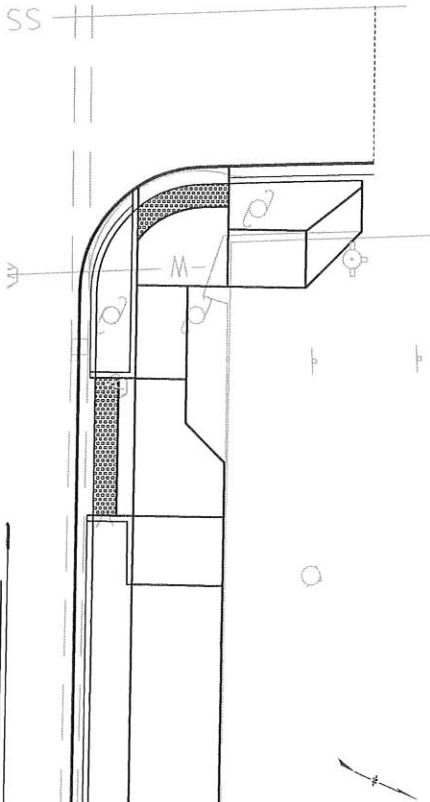
SCALE 1"=5'
 WEST MAIN STREET
 SPARTANBURG, SC
 CURB RAMP DETAILS
 SHEET 2 OF 6

Preliminary Not for Construction

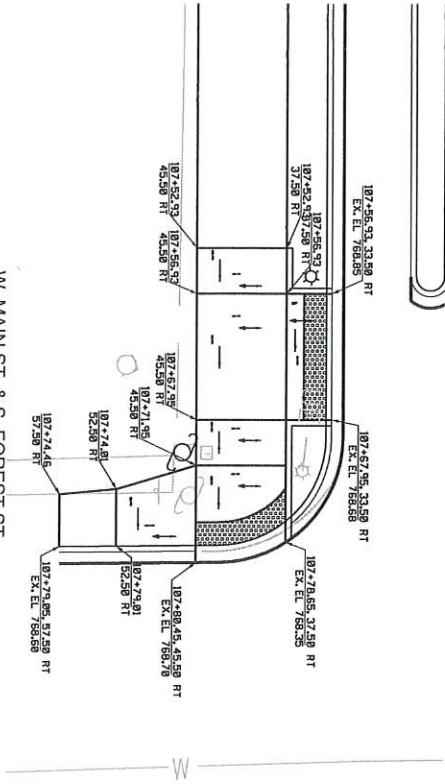
DATE	COUNTY	PROJECT NO.	TITLE	SHEET
SC	SPARTANBURG	448	EA	23



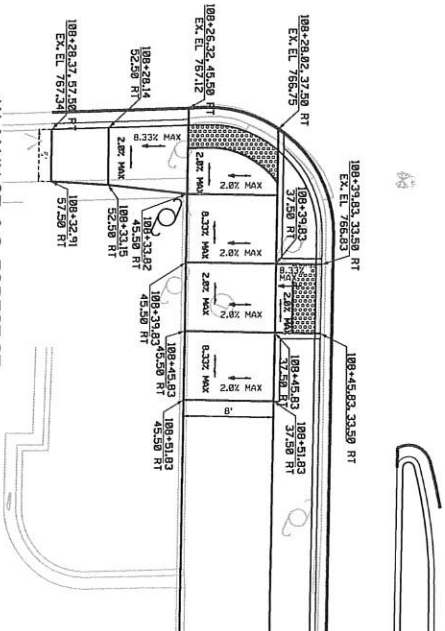
W. MAIN ST. & N. FOREST ST
NW CORNER



W. MAIN ST. & N. FOREST ST
NE CORNER



W. MAIN ST. & S. FOREST ST
SW CORNER



W. MAIN ST. & S. FOREST ST
SE CORNER

All drawings are instruments of professional service. Reuse or alteration is at the user's sole risk.

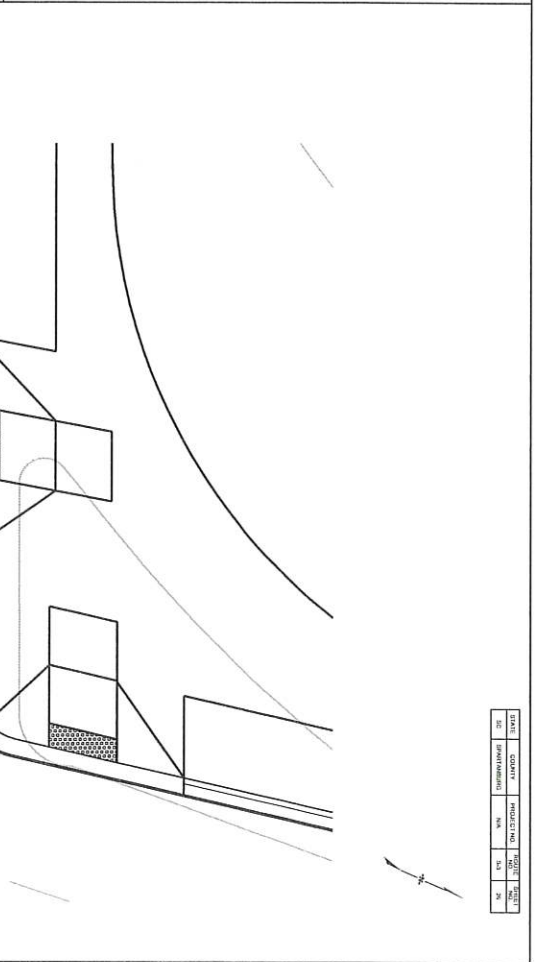
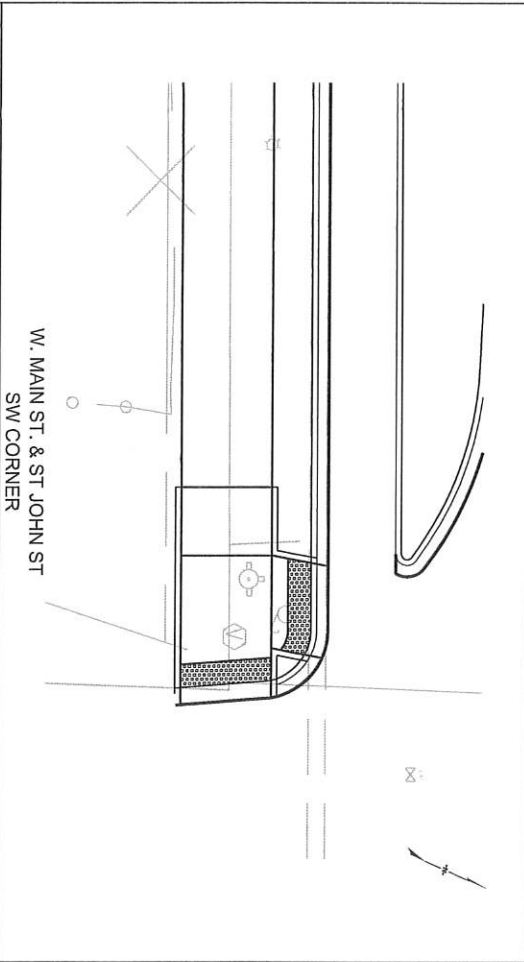
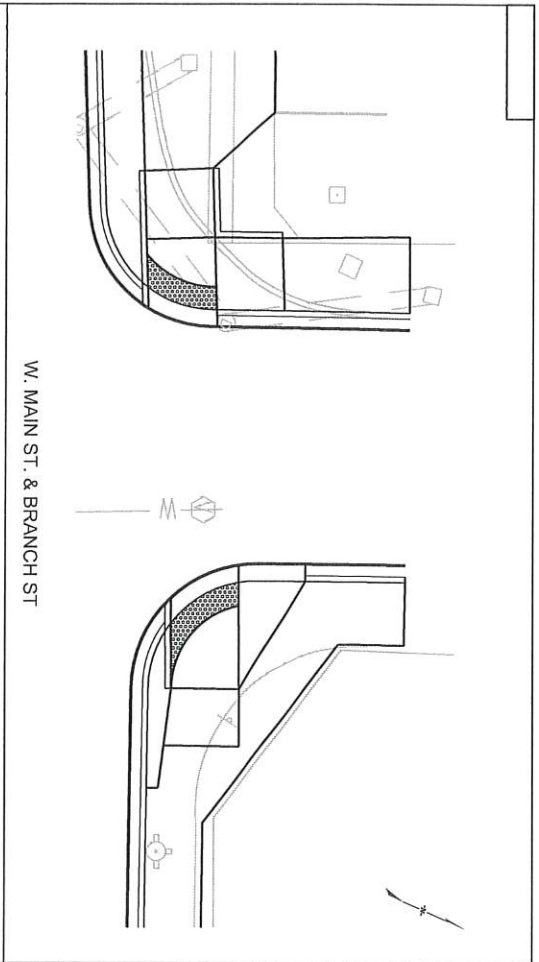


TOOLE
DESIGN

REV	DATE	BY	CHK	DESCRIPTION
1				
2				
3				
4				

Preliminary Not for Construction
 WEST MAIN STREET
 SPARTANBURG, SC
 CURB RAMP DETAILS
 SHEET 3 OF 6
 SCALE 1"=6'
 SHEET NO. 24

user
 *****f*****



All drawings are instruments of professional service. Reuse or alteration is at the user's sole risk.

SCALE IN FEET
 0 5 10 20

TOOLE
 DESIGN

NO.	DATE	DESCRIPTION OF REVISION
1		
2		
3		
4		

Preliminary Not for Construction

WEST MAIN STREET
 SPARTANBURG, SC

CURB RAMP DETAILS
 SHEET 9 OF 6

SCALE 1" = 10'

SHEET NO. 28

DATE	QUANTITY	PROJECT NO.	TITLE
SC	SPARTANBURG	NA	NA



EROSION CONTROL DATA SHEET

DATE: 11/21/2023
 COUNTY: SPOTTENBURG
 PROJECT: 1
 SHEET: 2 OF 3

RECEIVING WATERS

ROAD / ROUTE	OUTFALL DITCH STATION	RECEIVING WATERS	NAME OF ULTIMATE RECEIVING WATERS
W. MAIN ST. (S-3)	1154+0	LI	SOUTH TIER CREEK

SOIL TYPES

ROAD / ROUTE	STATION TO STATION	SOIL PARTICLE SIZE	ZONE
W. MAIN ST. (S-3)	1154+8 - 1194+2	COARSE / FINE	FIELD/OUT

TURF REINFORCED MATTING (TRM)

ROAD / ROUTE	STATION TO STATION	DEPTH OF MAT (FT)	SLOPE FEET / HORIZONTAL FEET	DITCH BOTTOM WIDTH (FT)	TYPE	TYPE 1 (MSY)	TYPE 2 (MSY)	TYPE 3 (MSY)
TOTALS								

SEDIMENT DAM

NO	ROAD / ROUTE	STATION	SIDE	DEIGNED OR NOT DEIGNED	LENGTH OF SILT BASIN	WIDTH OF SILT BASIN	DAM HEIGHT	SIDE SLOPE OF SILT BASIN	SHULDER WIDTH	DAM BOTTOM WIDTH	RIP-RAP CLASS	TOTAL STORAGE VOLUME	SEDIMENT STORAGE HEIGHT	OUTFALL CHANNEL WIDTH	OUTFALL CHANNEL DEPTH	OUTFALL CHANNEL LENGTH
TOTALS																

TEMPORARY EROSION CONTROL BLANKET

ROAD / ROUTE	STATION TO STATION	SIDE	DEPTH OF BLANKET (FT)	DITCH BOTTOM WIDTH (FT)	SLOPE	TOTAL	COMMENTS
							MSY
TOTAL							

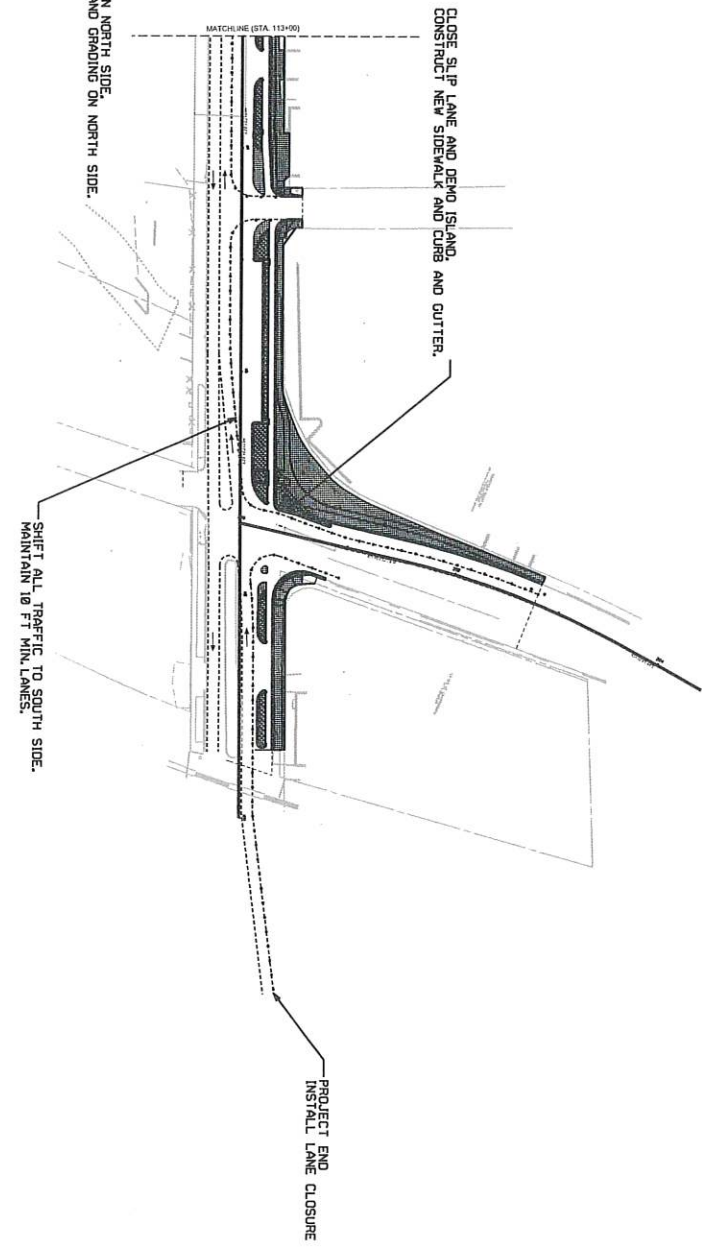
SEDIMENT TUBES IN DITCHES

ROAD / ROUTE	STATION TO STATION	SIDE	AVERAGE LENGTH	SPACING	TOTAL	COMMENTS
TOTAL						

MAINTENANCE OF TRAFFIC NOTES:
 1. IMPLEMENT WORK ZONE TRAFFIC CONTROL IN ACCORDANCE WITH THE SCOTT STANDARD DRAWINGS FOR WORK ZONE TRAFFIC CONTROL AND MUTED SECTION BOSS AND SECTION SH-1A-28 AND TA-29.
 2. SEE SCOTT STANDARD DRAWINGS FOR MUTED SECTION BOSS AND SECTION SH-1A-28 AND TA-29.
 3. CONTRACTOR SHALL SUBMIT AN APPROVED TRAFFIC CONTROL PLAN TO ENGINEER PRIOR TO BEGINNING WORK.

STATE	COUNTY	PROJECT NO.	SHEET NO.	TOTAL SHEETS
SC	SPARTANBURG	MA	31	102

PHASE 1



PHASE 1:
 SHIFT TRAFFIC TO SOUTH SIDE OF WEST MAIN ST.
 CONSTRUCT MEANS FOR SEPARATED BIKE LANE ON NORTH SIDE.
 CONSTRUCT SIDEWALKS, RAMPS, CURB AND GUTTER AND GRADING ON NORTH SIDE.

- ▨ DEMOLISH
- ▨ CONSTRUCTION
- BARREL
- LANE GUIDANCE LINES
- - - - USE FOR BARREL PLACEMENT, NOT TEMP. STRIPING

All drawings are instruments of professional service. Reuse or alteration is at the user's sole risk.

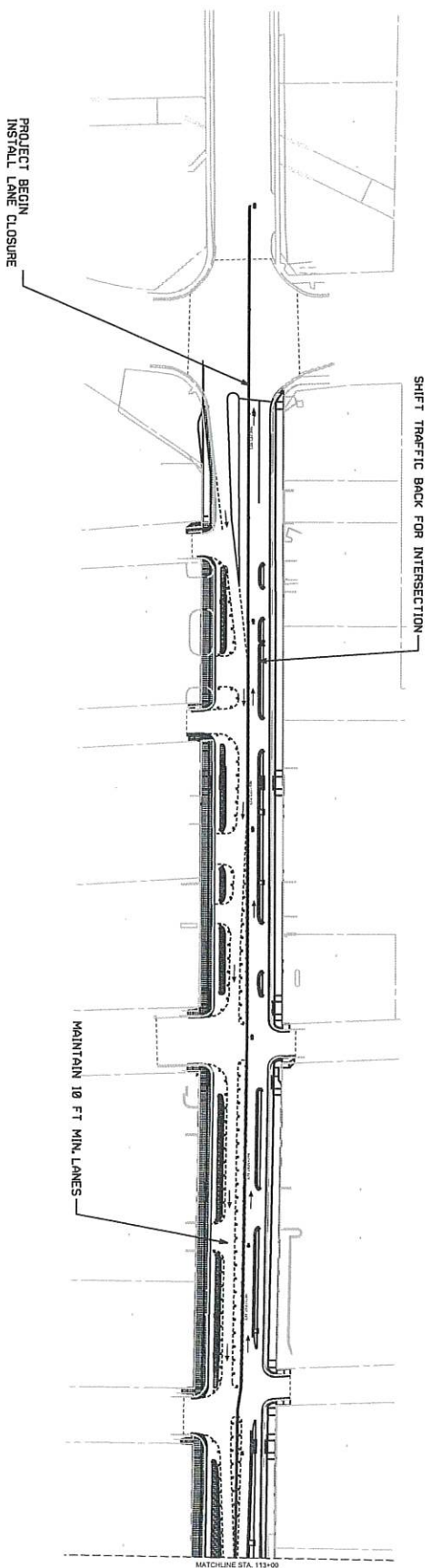


NO.	DATE	DESCRIPTION OF REVISION
4		
3		
2		
1		

WEST MAIN STREET
 PHASE 1
 SPARTANBURG, SC
 TRAFFIC CONTROL
 PLAN SHEET
 2 OF 2
 SCALE: 1"=50'
 SHEET NO. TC-2

DATE	COMMIT	PROJECT NO.	SHEET NO.
08/11/2011	08/11/2011	1000000000	1000000000

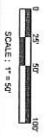
MAINTENANCE OF TRAFFIC NOTES:
 1. MAINTENANCE WORK ZONE TRAFFIC CONTROL IN ACCORDANCE WITH THE SCODD STANDARD DRAWINGS FOR WORK ZONE TRAFFIC CONTROL AND MUTCO SECTION 6013 AND SECTION 6H TA-28 AND TA-29
 2. CONSTRUCTION SHALL SUBMIT AN APPROVED TRAFFIC CONTROL PLAN TO ENGINEER PRIOR TO BEGINNING WORK.



PHASE 2A TRAFFIC TO NORTH-SIDE OF WEST MAIN ST.
 SHEET 2A TRAFFIC TO NORTH-SIDE OF WEST MAIN ST.
 CONSTRUCT MEDIANS FOR SEPARATED BIKE LANE ON SOUTH SIDE.
 CONSTRUCT SIDEWALKS, RAMPS, CURB AND GUTTER AND GRADING ON SOUTH SIDE.

- DEMO/ISH
- CONSTRUCTION
- BARREL
- LANE GUIDANCE LINES
- USE FOR BARREL PLACEMENT, NOT TEMP. STRIPING

All drawings are instruments of professional service. Reuse or alteration is at the user's sole risk.



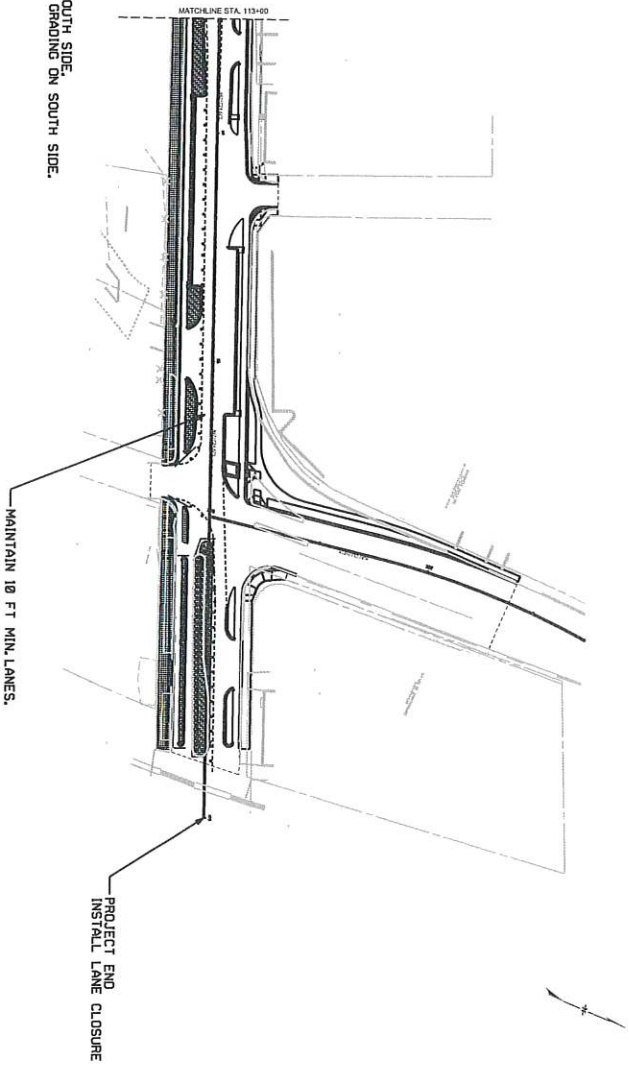
4					
3					
2					
1					
DATE	BY	CHECK	DATE	DESCRIPTION OF REVISION	
				SOUND	

Preliminary Not for Construction
 WEST MAIN STREET
 SPARTANBURG, SC
 TRAFFIC CONTROL
 PLAN SHEET
 1 OF 2
 SCALE 1"=50'
 SHEET NO. TS 3

USER ##
 PROJECT ##
 SHEET ##

DATE	QUANTITY	PROJECT NO.	SCALE
05/11/2011	1	100000000	1"=50'

MAINTENANCE OF TRAFFIC NOTES:
 1. IMPLEMENT WORK ZONE TRAFFIC CONTROL IN ACCORDANCE WITH THE SCOTT STANDARD DRAWINGS FOR WORK ZONE TRAFFIC CONTROL AND MUTED SECTION SOLID AND SECTION SH 1A-28 AND 1A-29.
 2. CONSTRUCTION SHALL SUBMIT AN APPROVED TRAFFIC CONTROL PLAN TO ENGINEER PRIOR TO BEGINNING WORK.



- PHASE 2a
 SHIFT TRAFFIC TO NORTH SIDE OF WEST MAIN ST.
 CONSTRUCT MEDIANS FOR SEPARATED BIKE LANE ON SOUTH SIDE.
 CONSTRUCT SIDEWALKS, RAMPS, CURB AND GUTTER AND GRADING ON SOUTH SIDE.
- DEMOLISH
 - PATCH
 - CONSTRUCTION
 - BARREL
 - LANE GUIDANCE LINES
 - * USE FOR BARREL PLACEMENT, NOT TEMP. STRIPING

All drawings are instruments of professional service. Reuse or alteration is at the user's sole risk.

TOOLE
 DESIGN

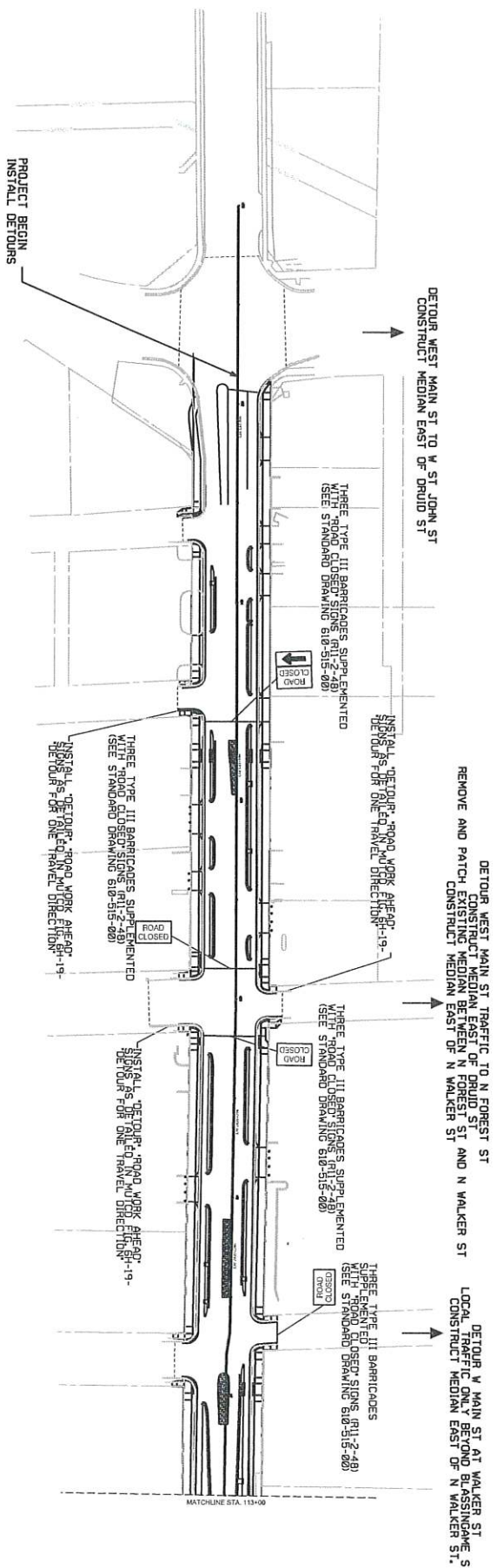
NO.	DATE	DESCRIPTION
4		
3		
2		
1		

West Main Street
 Spartanburg, SC
 TRAFFIC CONTROL
 PLAN SHEET
 2 OF 2
 SCALE 1"=50' SHEET NO. T2.4

Preliminary Not for Construction

DATE	QUANTITY	INVENTORY	TOTAL	REMARKS
01/15/2020	1	0	1	

MAINTENANCE OF TRAFFIC NOTES:
 1. IMPERMENT WORK ZONE, TRAFFIC CONTROL, IN ACCORDANCE WITH THE SCOOT STANDARD DRAWINGS FOR WORK ZONE TRAFFIC CONTROL AND MUTCO SECTION 601.3 AND SECTION 6H 1A-28 AND 1A-29.
 2. CONSTRUCTION SHALL SUBMIT AN APPROVED TRAFFIC CONTROL PLAN TO ENGINEER PRIOR TO BEGINNING WORK.



PHASE 3:
 DETOUR TRAFFIC ON WEST MAIN ST TO SIDE STREETS TO CONSTRUCT NEW MEDIAN ISLANDS.

- DEMOLISH
- PATCH
- CONSTRUCTION
- BARREL
- LANE GUIDANCE LINES
- - - LANE FOR BARREL PLACEMENT, NOT TEMP. STRIPING

All drawings are instruments of professional service. Reuse or alteration is at the user's sole risk.



TOOLE DESIGN

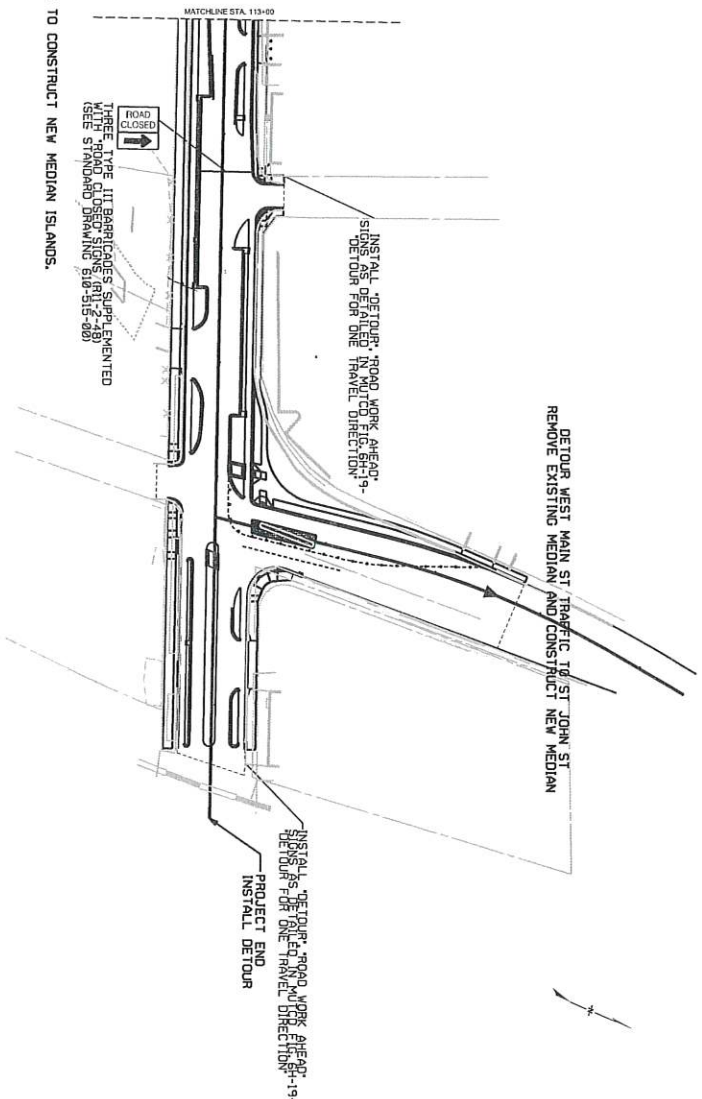
NO.	DATE	DESCRIPTION OF REVISION
4		
3		
2		
1		

West Main Street
 Spartanburg, SC
 TRAFFIC CONTROL
 PLAN SHEET
 1 OF 2
 SCALE 1"=50'
 SHEET NO. TB 8

Preliminary Not for Construction

USER 00

MAINTENANCE OF TRAFFIC NOTES:
 1. IMPLEMENT WORK ZONE TRAFFIC CONTROL IN ACCORDANCE WITH THE SCOTT STANDARD DRAWINGS FOR WORK ZONE TRAFFIC CONTROL AND MUTCD SECTION 6A.13 AND SECTION 6B.1A-28 AND 1A-29.
 2. CONTRACTOR SHALL SUBMIT AN APPROVED TRAFFIC CONTROL PLAN TO ENGINEER PRIOR TO BEGINNING WORK.

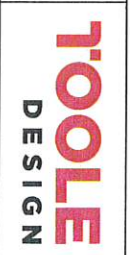


PHASE 3:
 DETOUR TRAFFIC ON WEST MAIN ST TO SIDE STREETS TO CONSTRUCT NEW MEDIAN ISLANDS.

- ▨ DEMOLISH
- ▨ CONSTRUCTION
- BARREL
- LANE GUIDANCE LINES
- USE FOR BARREL PLACEMENT, NOT TEMP. STRIPING

All drawings are instruments of professional service. Reuse or alteration is at the user's sole risk.

user: 99
 title: 113+00
 sheet: 2 OF 2

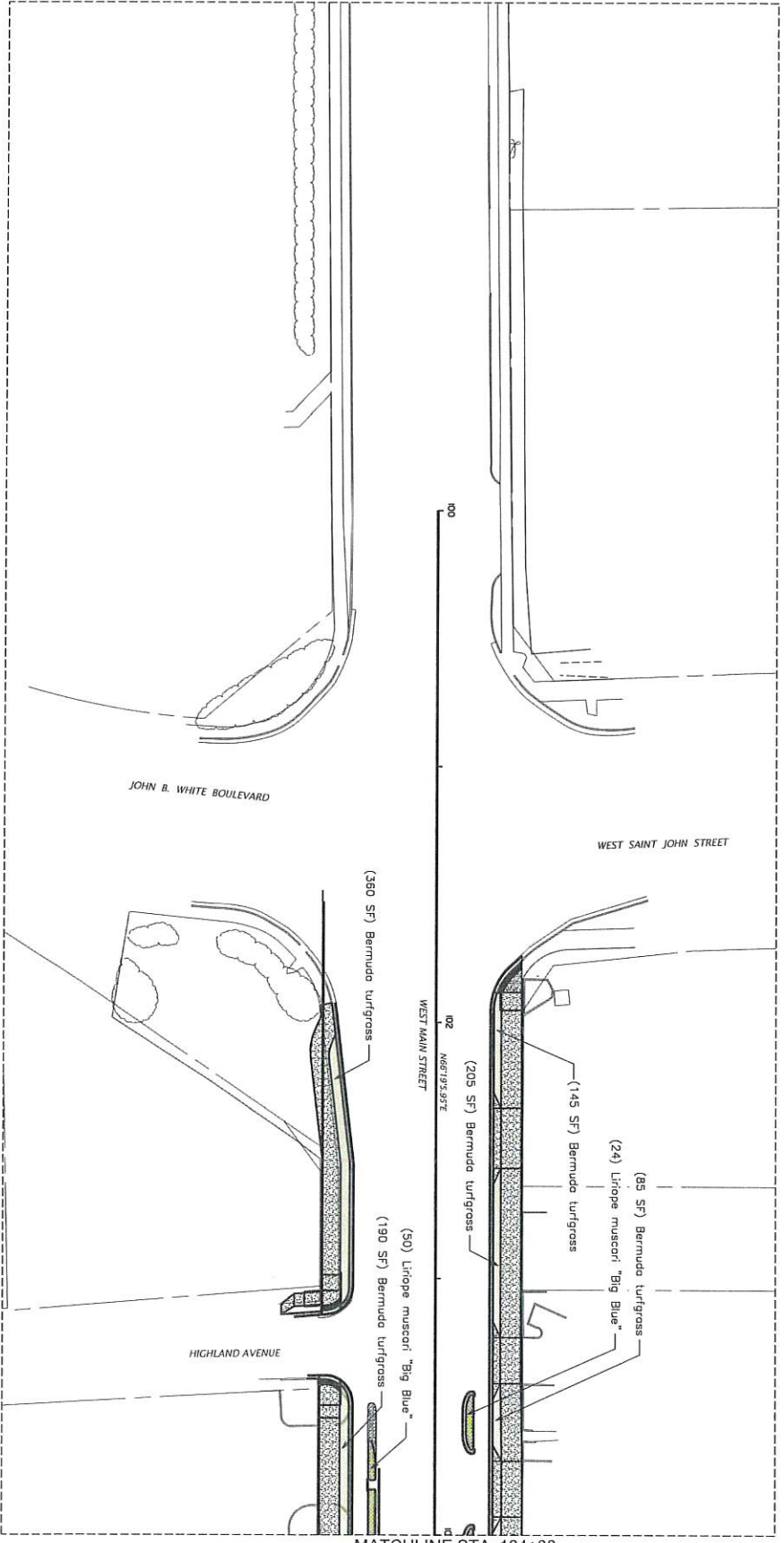


NO.	DATE	BY	DESCRIPTION
1			
2			
3			
4			

Preliminary Not for Construction
 WEST MAIN STREET
 SPARTANBURG, SC
 TRAFFIC CONTROL
 PLANSHEET
 2 OF 2
 SCALE: 1"=50'
 SHEET NO. TB 8

Reuser #
 #####
 #####

All drawings are instruments of professional service. Reuse or alteration is at the user's sole risk.



MATCHLINE STA. 104+00

TOOLE
 DESIGN

REV	DATE	DESCRIPTION OF REVISION
4		
3		
2		
1		

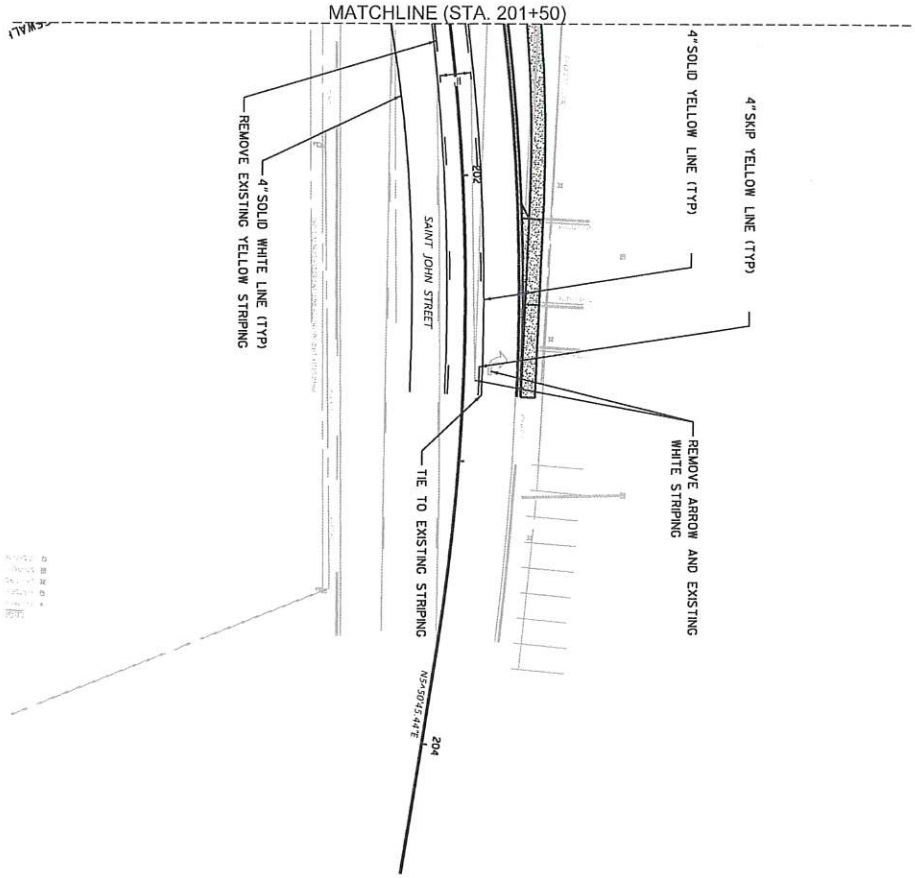
SCALE 1" = 20'
 WEST MAIN STREET
 SPARTANBURG, SC
 LANDSCAPING
 PLAN OF 5
 SHEET NO. 11

Preliminary Not for Construction

TITLE	DATE	BY	CHECKED	DATE
LANDSCAPING	11/15/20	JL	JL	11/15/20

USER ##
 *****flanome*****

All drawings are instruments of professional service. Reuse
 or alteration is at the user's sole risk.



TOOLE
 DESIGN

REV. NO.	DATE	DESCRIPTION
1		
2		
3		
4		

SCALE 1"=20'

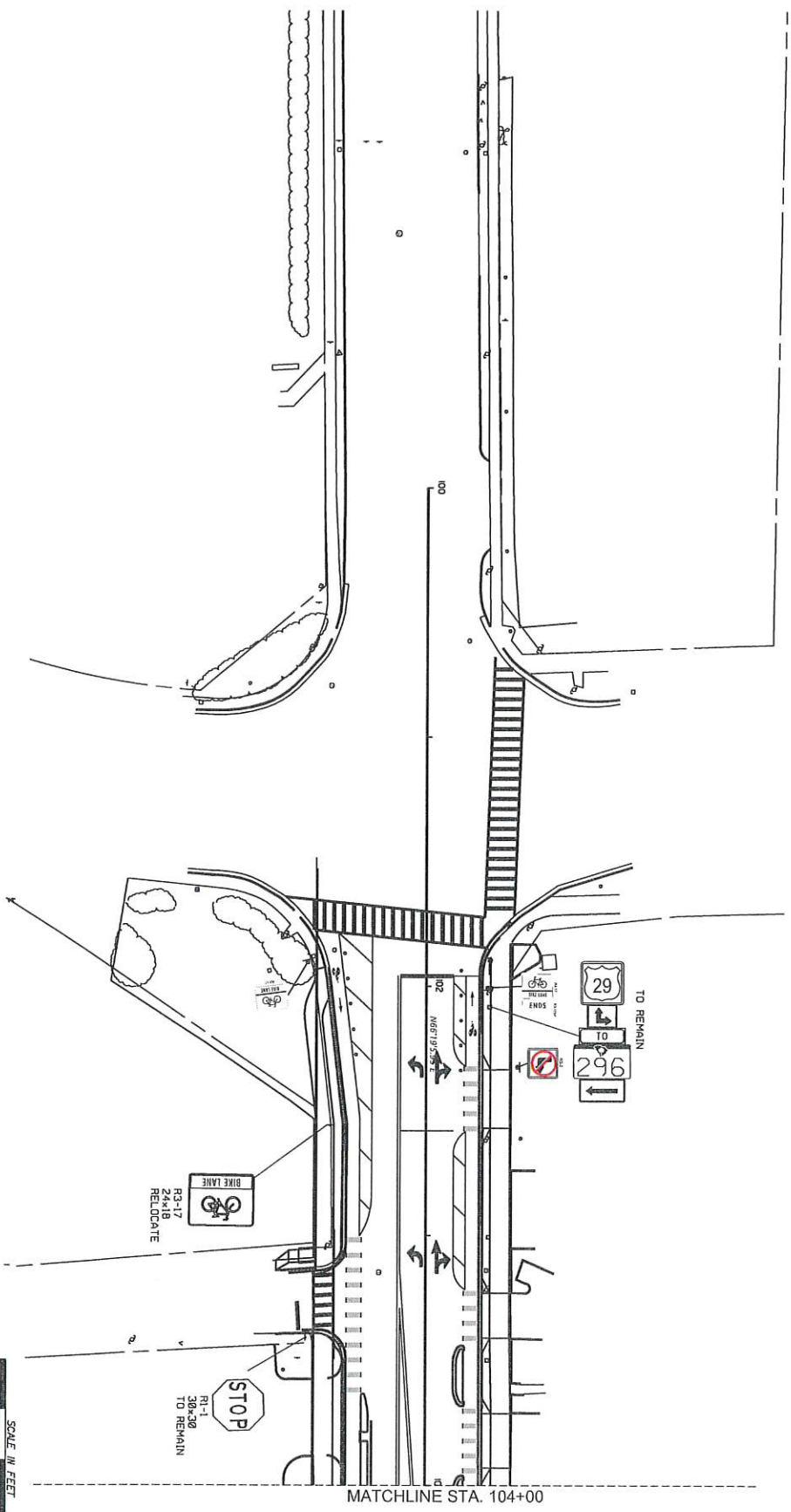
WEST MAIN STREET
 SPARTANBURG, SC
 PAVEMENT MARKINGS
 PLAN OF 5'

SHEET NO. PMS

Preliminary Not for Construction

DATE	COMMITTEE	PROJECT NO.	SCALE	DATE
02/15/2017			1/4" = 1'	02/15/2017

All drawings are instruments of professional service. Reuse or alteration is at the user's sole risk.



MATCHLINE STA. 104+00



NO.	DATE	BY	CHKD.	DESCRIPTION OF REVISION
4				
3				
2				
1				

SCALE 1"=30'

WEST MAIN STREET
 SPARTANBURG, SC

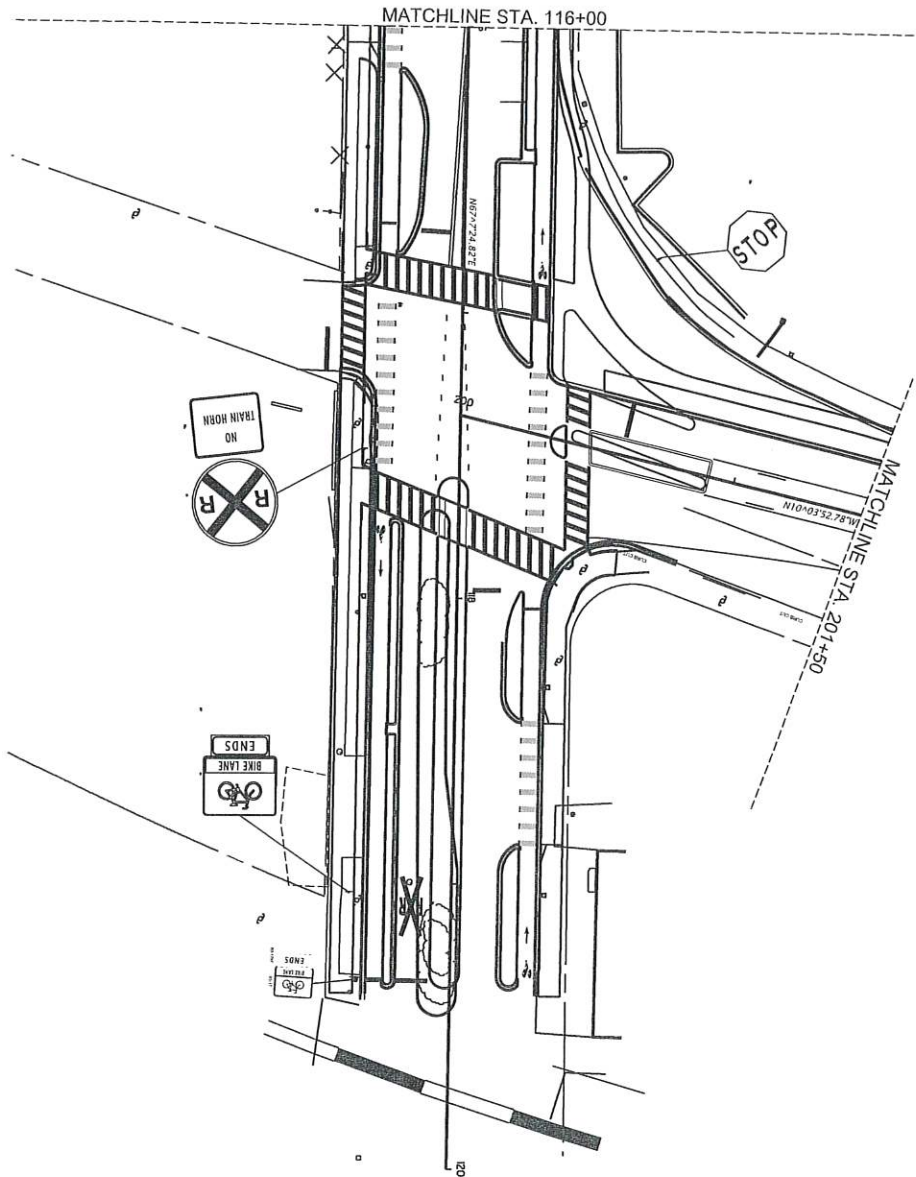
SIGNING
 PLAN SHEET
 1 OF 5

SHEET NO. 2011

Preliminary Not for Construction

USER #
 PROJECT #
 SHEET #

All drawings are instruments of professional service. Reuse or alteration is at the user's sole risk.



TOOLE
 DESIGN

REV.	DATE	DESCRIPTION
1		
2		
3		
4		

SCALE 1" = 20'

WEST MAIN STREET
 SPARTANBURG, SC

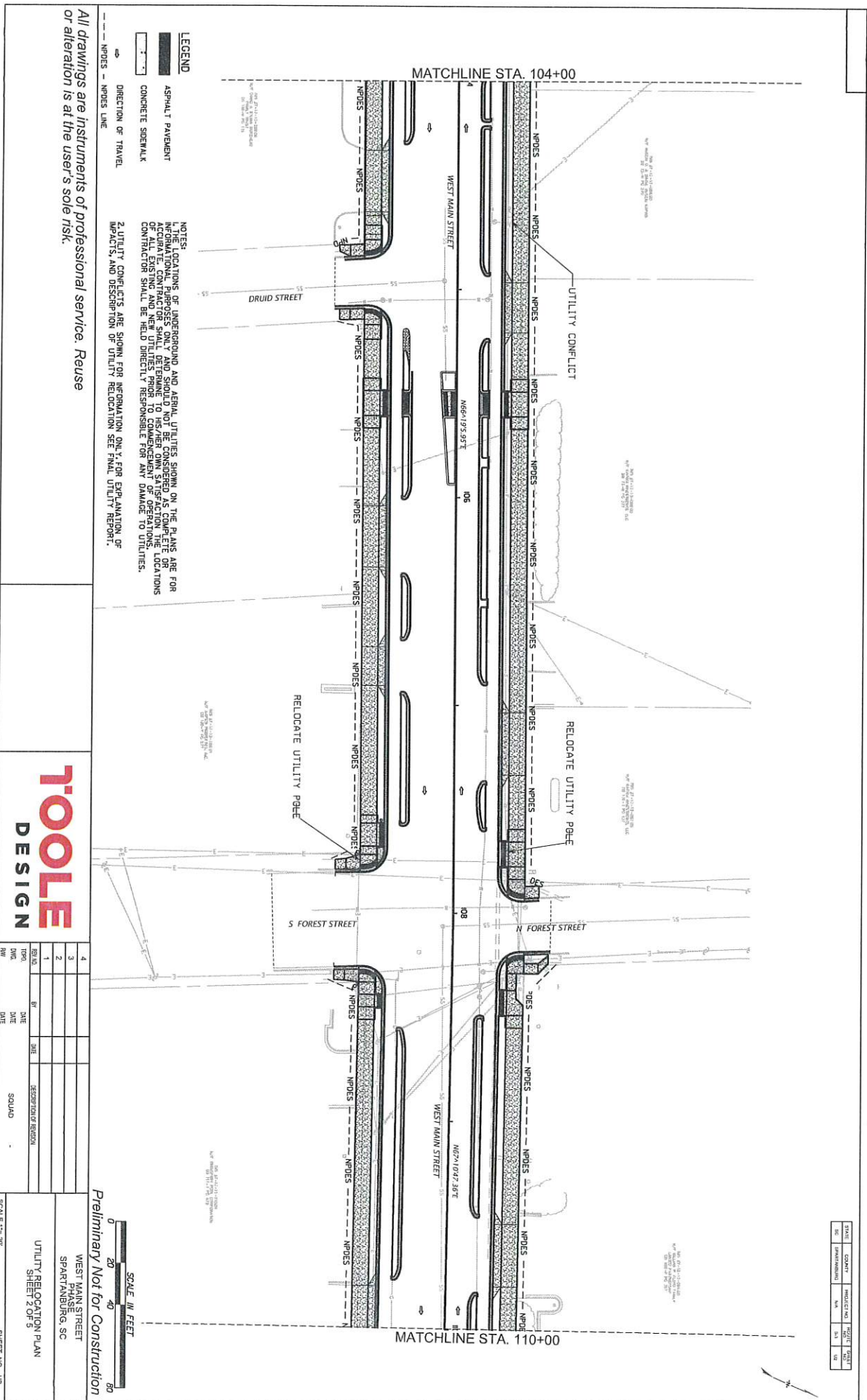
SIGNING
 P. 4 OF 5

SHEET NO. 594



DATE	COMPILED BY	PROJECT NO.	SHEET NO.





All drawings are instruments of professional service. Reuse or alteration is at the user's sole risk.

LEGEND
 ASPHALT PAVEMENT
 CONCRETE SIDEWALK
 DIRECTION OF TRAVEL
 NPDES - NPDES LINE

NOTES:
 1. THE LOCATIONS OF UNDERGROUND AND AERIAL UTILITIES SHOWN ON THE PLANS ARE FOR INFORMATION ONLY. THE CONTRACTOR SHALL VERIFY THE ACCURACY OF ALL EXISTING AND NEW UTILITIES PRIOR TO COMMENCEMENT OF OPERATIONS. CONTRACTOR SHALL BE HELD DIRECTLY RESPONSIBLE FOR ANY DAMAGE TO UTILITIES.
 2. UTILITY CONFLICTS ARE SHOWN FOR NEGOTIATION ONLY. FOR FINAL RELOCATION OF UTILITIES, SEE FINAL UTILITY REPORT.

TOOLE DESIGN

REV. NO.	DATE	BY	CHKD.	DESCRIPTION OF REVISION
1				
2				
3				
4				

SCALE 1" = 20'

Preliminary Not for Construction

WEST MAIN STREET
 SPARTANBURG, SC

UTILITY RELOCATION PLAN
 SHEET 2 OF 5

SHEET NO. U2

NO.	DATE	BY	CHKD.	DESCRIPTION

