

MC Courthouse

HVAC #01



HVAC-01
MC Courthouse

SERIAL 2608E13081

PROD 25HBB336A0030010

MODEL 25HBB336A300

METERING TXV 57 PISTON
DEVICE INDOOR OUTDOOR

FACTORY CHARGED R410A
6.49 LBS 2.94 KG

INDOOR TXV SUB COOLING 9 °F

POWER SUPPLY 208-230 VOLTS AC
1 PH 60 HZ

PERMISSIBLE VOLTAGE AT UNIT
253 MAX 197 MIN

SUITABLE FOR OUTDOOR USE

COMPRESSOR 208/230 VOLTS AC
1 PH 60 HZ
16.7 RLA 79.0 LRA

FAN MOTOR 208/230 VOLTS AC
1 PH 60 HZ
1/8 HP 0.9 FLA

DESIGN/TEST PRESSURE GAGE
HI 450 PSI 3103 KPA
LO 250 PSI 1724 KPA

MAX DESIGN/WORKING PRESSURE
700 PSIG 4826 KPA

MINIMUM CIRCUIT AMPS 21.7

MAX FUSE 35 A MAX CKT-BKR(*) 35 A
* HACR TYPE RECOMMENDED

MODEL NUMBER 25HBB336A0030010

SERIAL NUMBER 2608E13081
DATE OF MANUFACTURE JUN 2008



ARI Standard 210/240
Unitary Heat Pumps
CERTIFIED CAPACITY AND EFFICIENCY RATINGS ARE VALID ONLY WHEN THE
COMBINATION OF INDOOR UNIT AND OUTDOOR UNIT IS LISTED IN THE ARI DIRECTORY

Carrier Corporation
7310 West Morris St.
Indianapolis, IN 46231

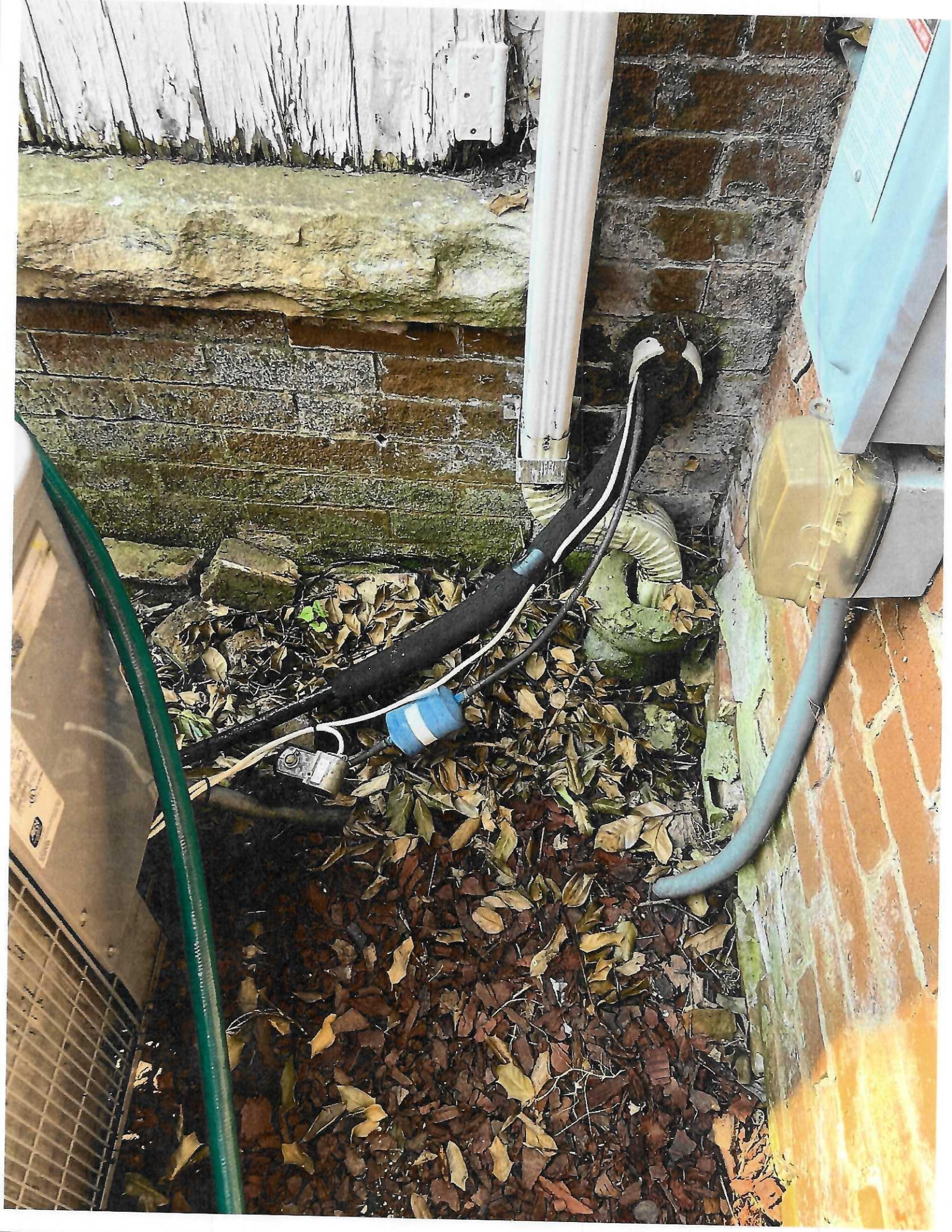
394882-4004



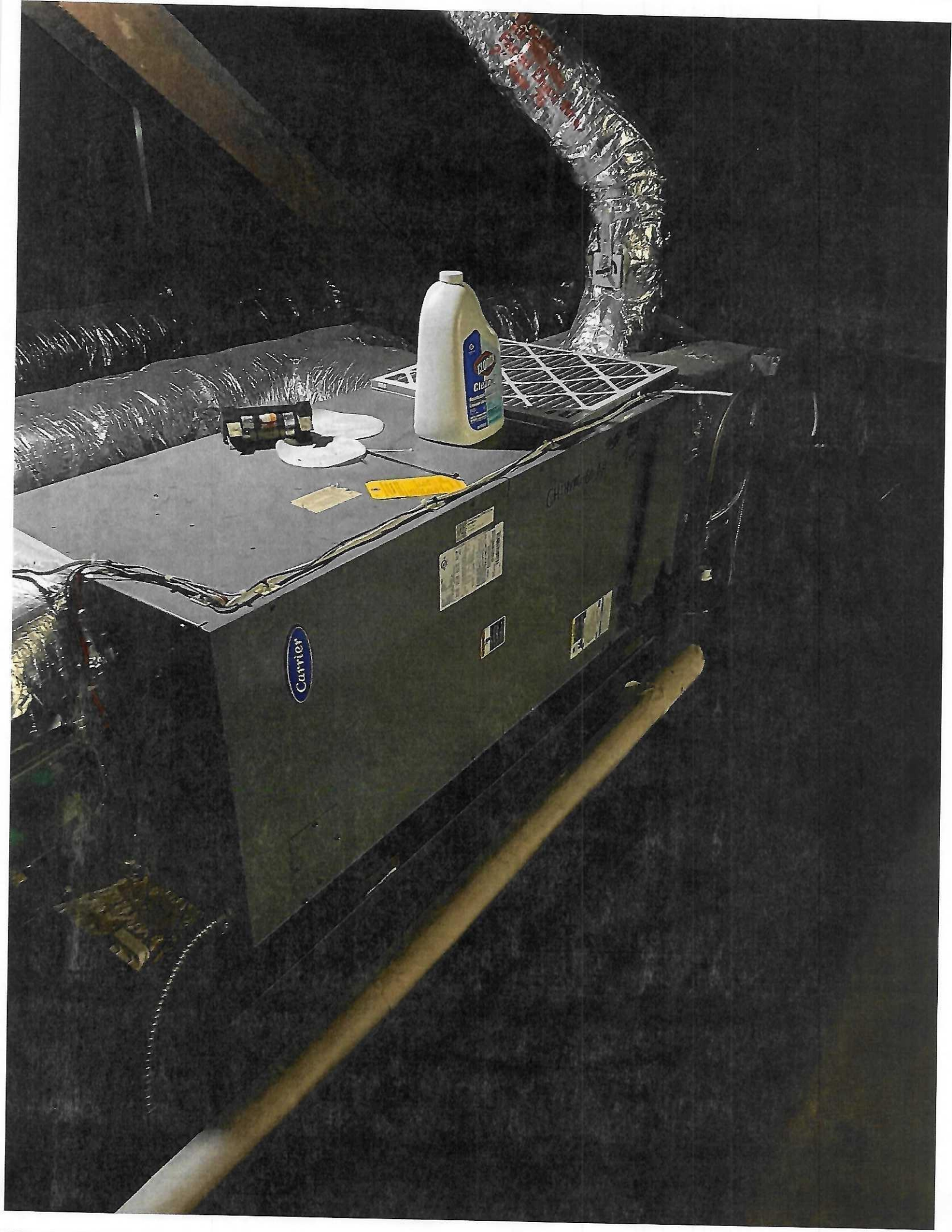
Courthouse

HVAC-01174
25HBB336A300









PRODUCT NO. FY4ANF036T00AAAA
MODEL NO. FY4ANF036
SERIAL NO. 2308A83675
VOLTS 208/230
MOTOR HP 1/3
MOTOR FLA 2.4
PHASE/HERTZ 1/60
TEST STATIC 0.20 IN. W.C.
REFRIGERANT 410A **DESIGN PSIG** 450
DATE OF MANUFACTURING JUN 2008



LISTED FAN COIL
 UNIT 3R39
 MC Courthouse
 HVAC-01
 Air Handler

APPROVED ACCESSORIES

KFCEH**01H10	KFCEH**01H15	KFCEH**01H20	KFCEH**01N10
KFCEH**01C05	KFCEH**01N08	KFCEH**01C08	KFCEH**01N15
KFCEH**01N10	KFCEH**01C10	KFCEH**01F15	KFCEH**01N20
KFCEH**01315	KFCEH**01F20	KFCEH**01C20	

** - NUMERIC

ELECTRICAL INFORMATION FOR THIS UNIT

END FIELD INSTALLED ELECTRIC HEATERS APPLY ELECTRICAL INFORMATION
 INSTALLER: APPLY THIS INFORMATION PLATE OVER SPACE INDICATED ON DOOR
 RATING PLATE. SEE INSTALLATION INSTRUCTIONS FOR 1" CLEARANCE REQUIREMENTS.

SINGLE	SUPPLY CIRCUIT	VOLTS	208/230	PHASE	1
L1/L2	HEATER AMPS	36.2/40.0	MIN. AMPACITY	53.8/58.5	
	SUPPLY CIRCUIT		MAX. OVERCURRENT PROTECTION	60/60	
	HEATER AMPS		MIN. AMPACITY		
			MAX. OVERCURRENT PROTECTION		
	HEATER AMPS		MIN. AMPACITY		
			MAX. OVERCURRENT PROTECTION		

HEAT PACKAGE IN THIS UNIT KFCEH0901N10 LABEL P/N 324648-410 REV. B

UNIT HAS INTEGRAL UNIT CONTROL. MAX. OUTLET TEMP. 200F
 DUCT THERMALLY PROTECTED.
 SEE INSTALLATION INSTRUCTIONS FOR SPECIFIC INSTALLATION REQUIREMENTS AND
 APPROVED ACCESSORY KIT INFORMATION.
 MAX. VOLTAGE TO GROUND OF SUPPLY CIRCUIT NOT TO EXCEED 120 VOLTS IF HEATER
 HAS CIRCUIT BREAKER CONTROL.
 COIL FOR COILS ONLY EXCEPT WHEN INSTALLED AS PART OF A LISTED HEAT PUMP.
 APPROVED HEATERS MFG'D BY CALIBOR, INDIANAPOLIS, IN
 CLEARANCE TO COMBUSTIBLE MATERIALS TO BE 0" FOR CASING, PLENUM AND DUCT FOR
 UNITS WITH NO HEATERS
 UNITS WITH HEATERS 20" W AND ABOVE, CLEARANCE TO COMBUSTIBLE MATERIAL IS
 TO BE 0" TO CASING AND 1" FOR FIRST 30" OF PLENUM AND DUCT.

CAUTION METERING DEVICE FOR THIS COIL MUST
 MATCH THAT SHOWN ON OUTDOOR UNIT
 RATING PLATE. REPLACE IF NECESSARY.
 THIS UNIT IS EQUIPPED WITH METERING DEVICE.

TXV

315 West Morris St
 Indianapolis, IN 46221 USA

Model Number FY4ANF036T00AAAA



Serial Number 2308A83675

