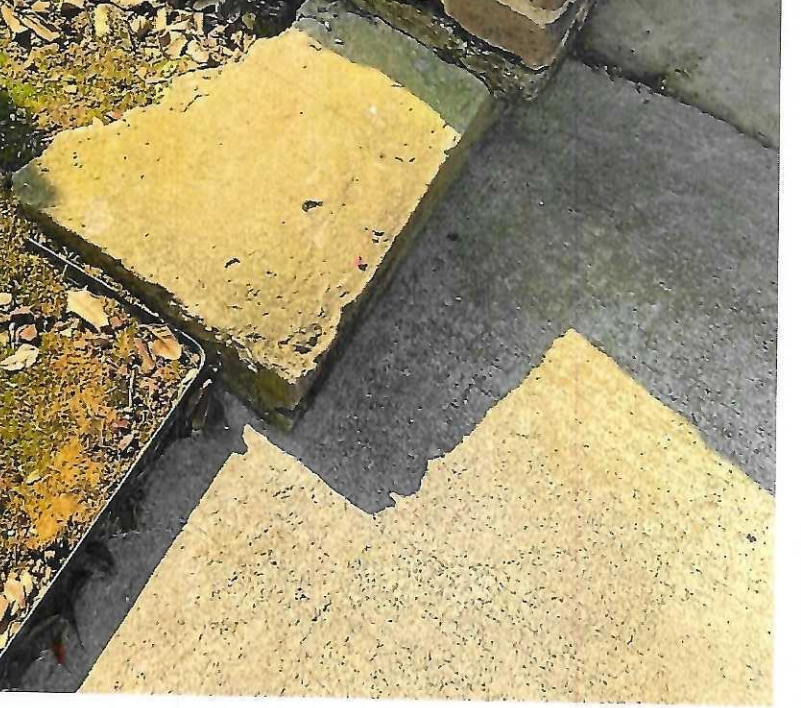


MC Courthouse

HVAC #04

MC Courthouse
HVAC-04



#4

DATE 12/95



HEAT PUMP

MODEL NO.

CH5536UKC1



LISTED OUTDOOR SECTION OF HEAT PUMP 331X

STYLE NO. 36MHD-000095ZR	SERIAL NO. L955027994	MFR. NO. NCH5536UKC1
-----------------------------	--------------------------	-------------------------

RATED VOLTAGE 208/230 PH 1 HZ 60

VOLTAGE: MIN. 197 MAX. 253

MAX. FUSE OR CKT. BKR. (HACR TYPE IN USA) 35 AMPS

MINIMUM CIRCUIT AMPACITY: 21.3

	HP	PH	FLA	RLA	LRA
COMPRESSOR:		1		16.0	100

FAN:	1/3	1	1.3		3.56
------	-----	---	-----	--	------

HEAT PUMP OUTPUT: ~~XXXXXX~~ WATTS COOLING
~~XXXXXX~~ WATTS HEATING

OUTDOOR UNIT SHIPPING CHARGE R22: 123 OZ.
TOTAL OPERATING CHARGE ~~XXXXXXXXXX~~

TO DETERMINE TOTAL OPERATING CHARGE REFER TO TECH SHEET OR INSTALLATION INSTRUCTIONS
TEST PRESSURE (PSIG): HIGH ~~300~~ LOW ~~300~~ FOR OUTDOOR USE

INTER-CITY PRODUCTS CORPORATION (USA)
LAVERGNE, TN USA 37086

CONTROL BOX ACCESS

LEB 1053826-B

HVAC-04



WARNING

ELECTRICAL SHOCK HAZARD

Turn Off All Power Before Servicing Unit May Have Multiple Disconnects

ATTENTION: Déconnecter Du Circuit D'alimentation Electrique Avant L'entretien

1053830-A

PRINTED IN CANADA

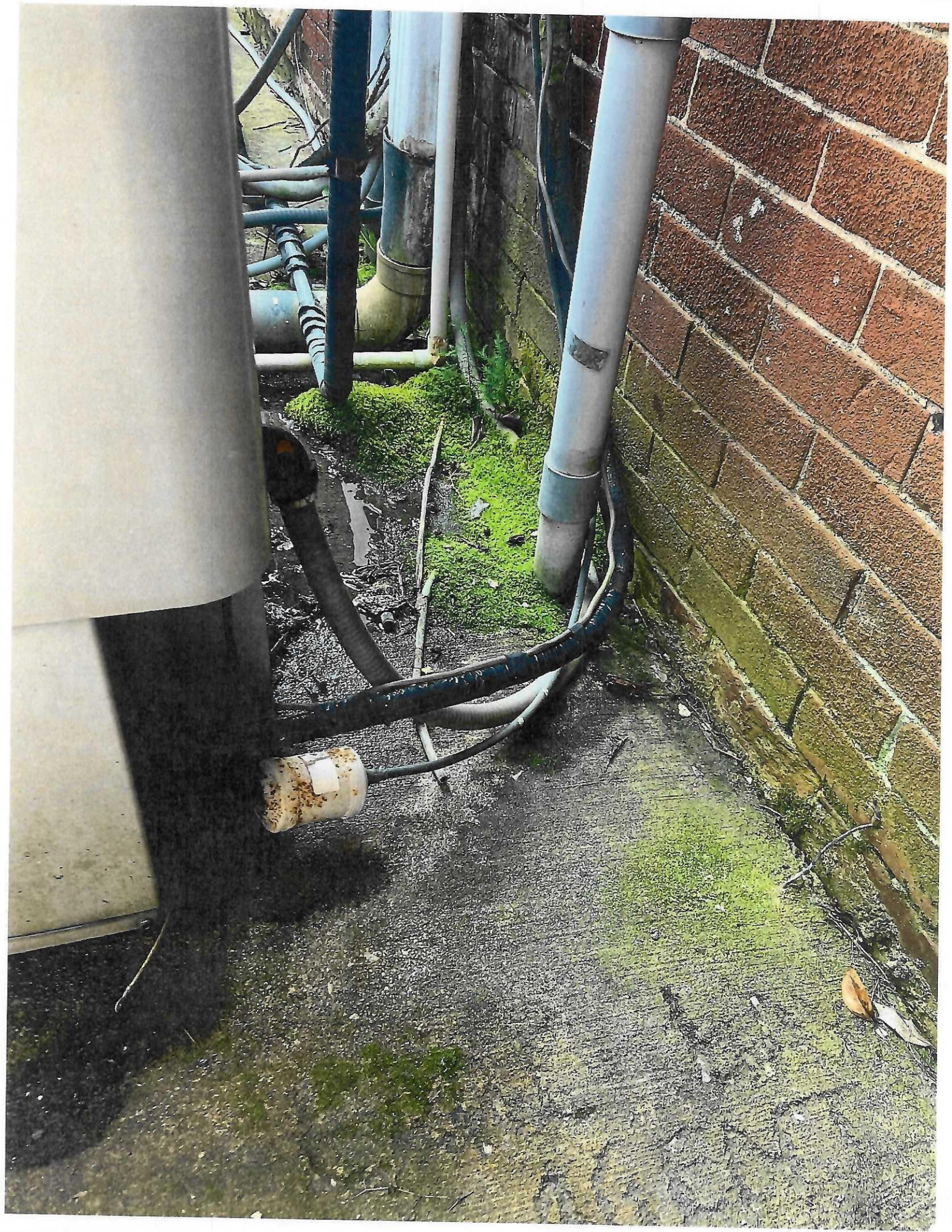
VERIFIED FOR ENERGY PERFORMANCE



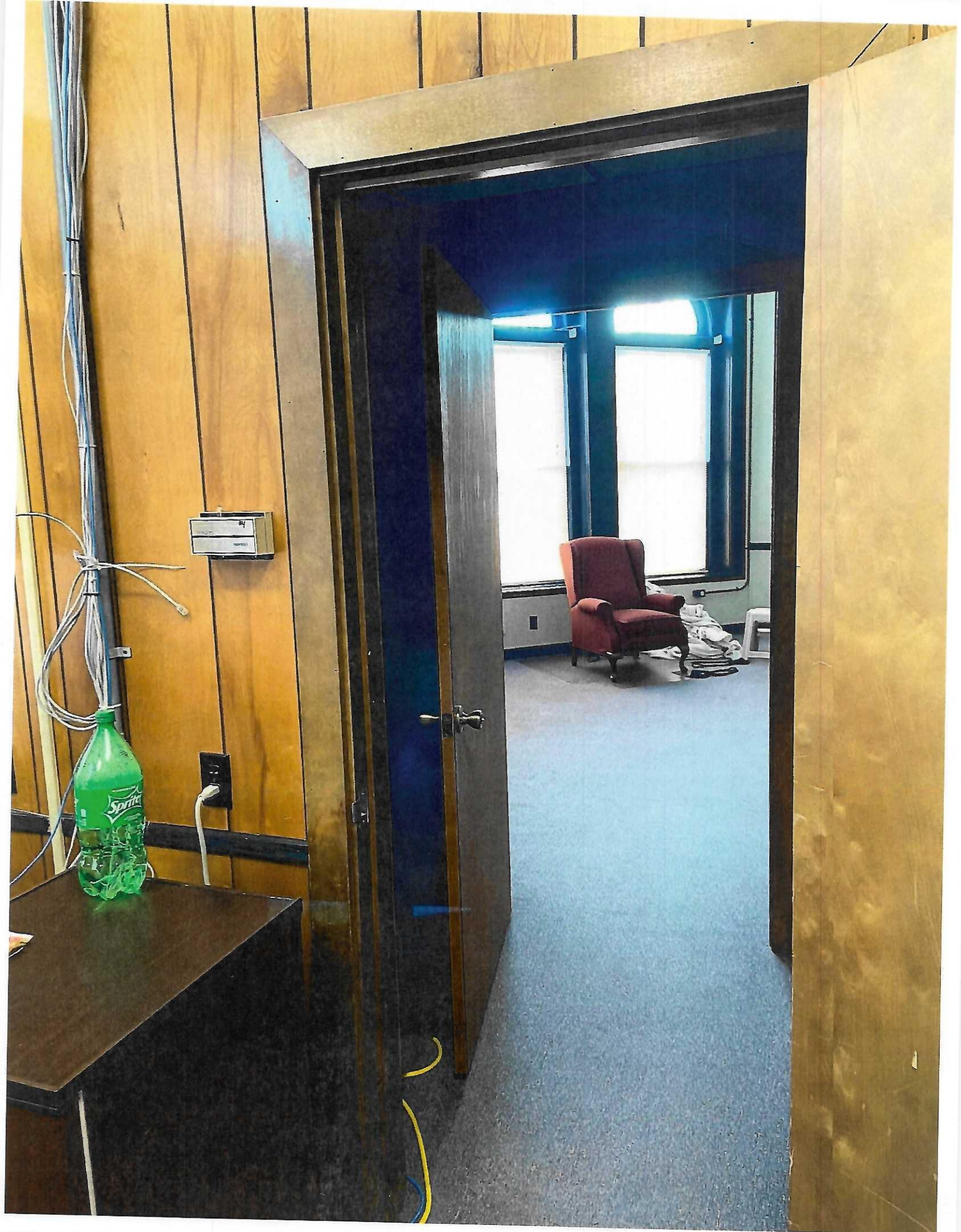
RENDEMENT ENERGÉTIQUE VÉRIFIÉ

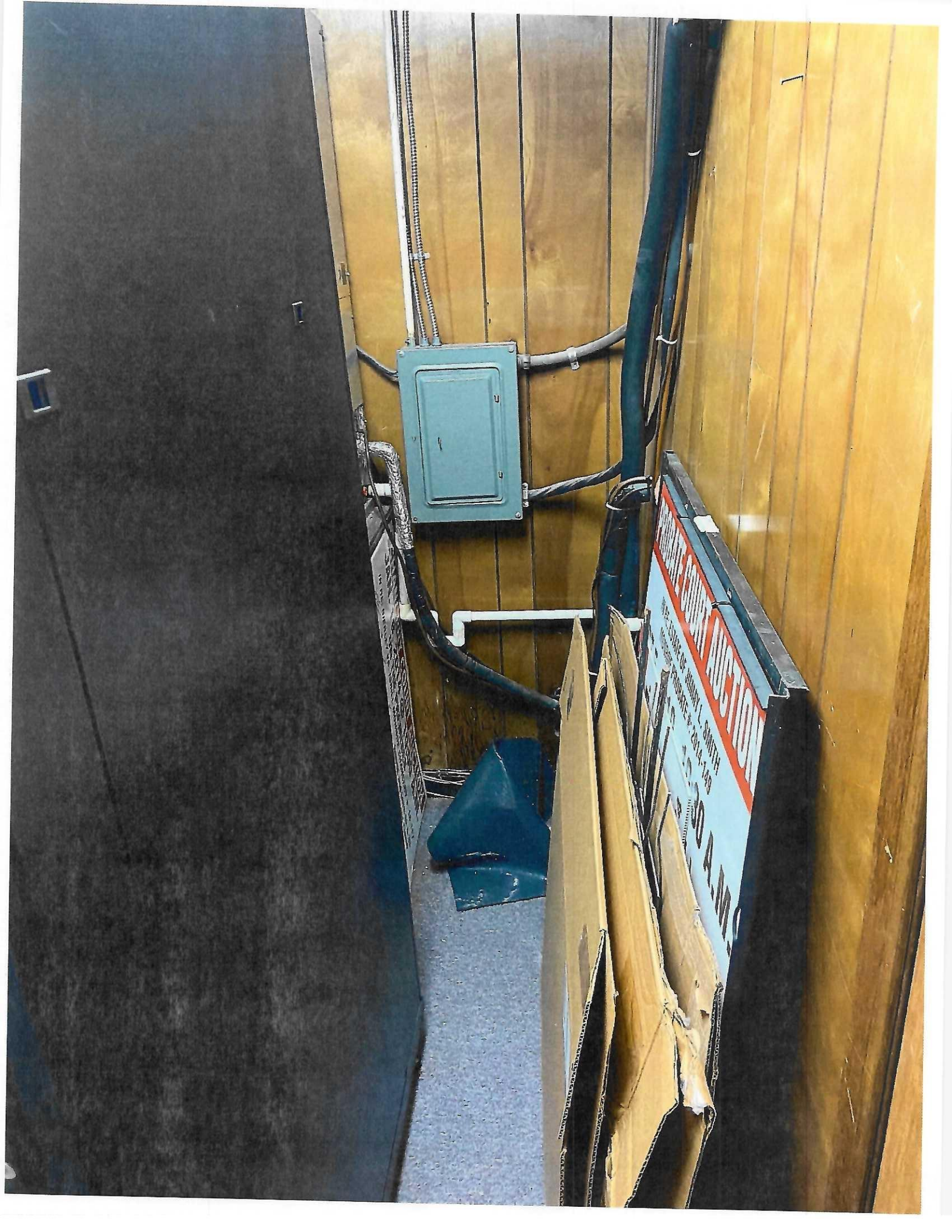
IMPRIMÉ AU CANADA

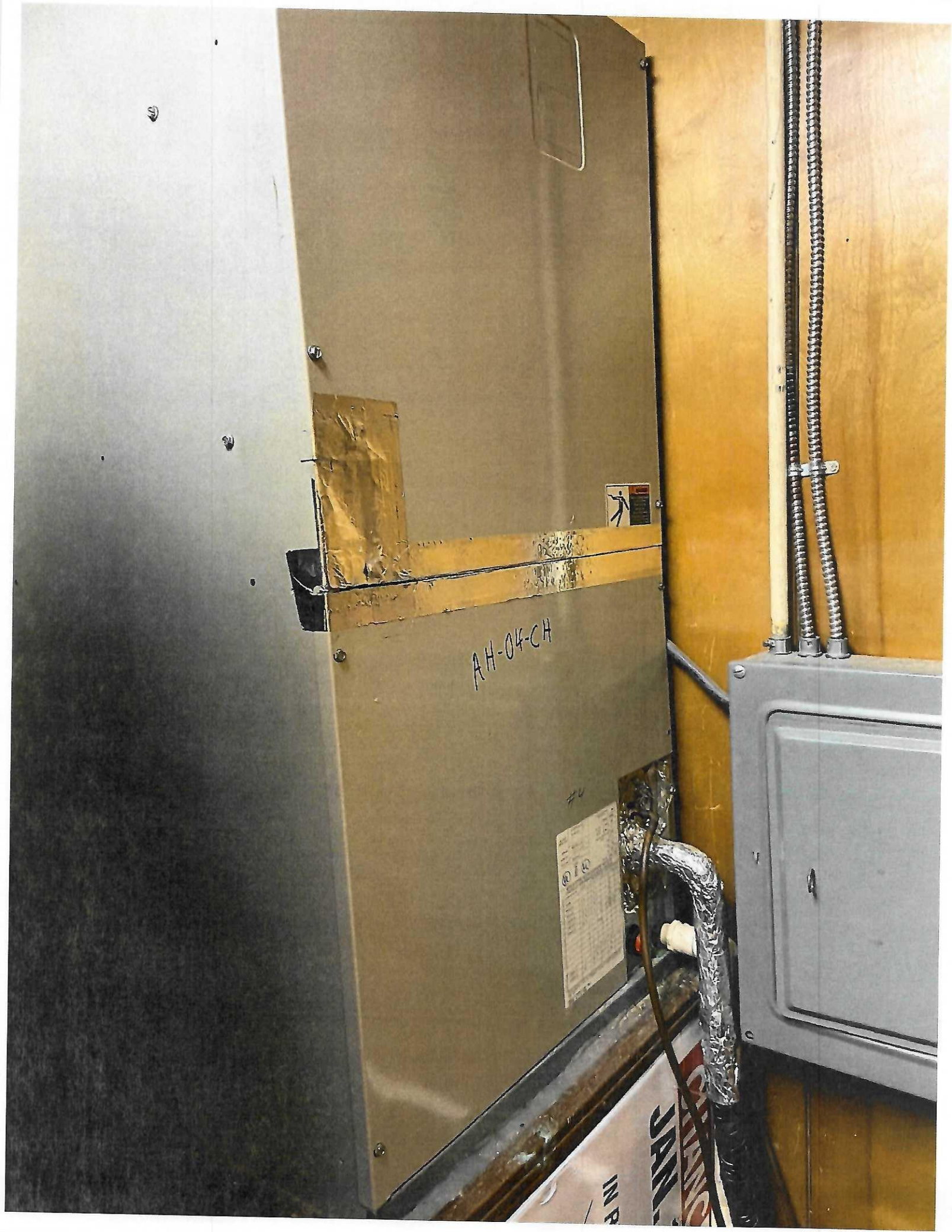
W 149832











AH-04-CH



70
① ②
③ ④
⑤ ⑥
⑦ ⑧
⑨ ⑩
⑪ ⑫
⑬ ⑭
⑮ ⑯
⑰ ⑱
⑲ ⑳
㉑ ㉒
㉓ ㉔
㉕ ㉖
㉗ ㉘
㉙ ㉚
㉛ ㉜
㉝ ㉞
㉟ ㊱
㊲ ㊳
㊴ ㊵
㊶ ㊷
㊸ ㊹
㊺ ㊻
㊼ ㊽
㊾ ㊿

IMB
JAN 1980

