

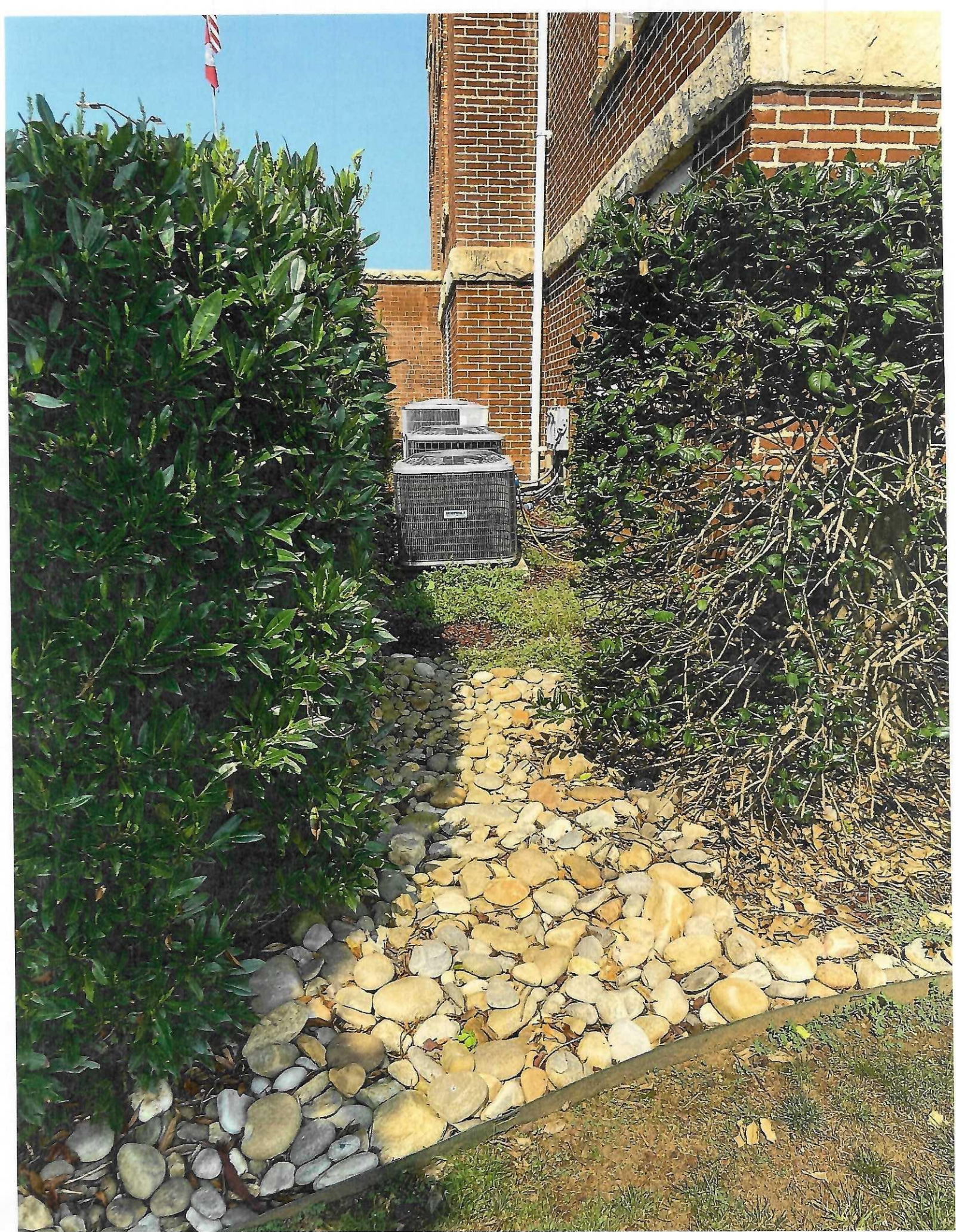
MC Courthouse

HVAC #12



HVAC-12
MC Courthouse

TEMPSTAR
Heating and Cooling Products





SERIAL E153400297

PROD N4H448GKG101

MODEL N4H448GKG101

METERING TXU 65 PISTON
DEVICE INDOOR OUTDOOR

FACTORY CHARGED R410A
8.68 LBS 3.94 KG

INDOOR TXU SUB COOLING 14 °F

POWER SUPPLY 208-230 VOLTS AC
1 PH 60 HZ

PERMISSIBLE VOLTAGE AT UNIT
253 MAX 197 MIN
SUITABLE FOR OUTDOOR USE

COMPRESSOR 208/230 VOLTS AC
1 PH 60 HZ
19.0 RLA 108.0 LRA

FAN MOTOR 208/230 VOLTS AC
1 PH 60 HZ
1/4 HP 1.40 FLA

DESIGN/TEST PRESSURE GAGE
HI 450 PSI 3103 KPA
LO 250 PSI 1724 KPA

MAX DESIGN/WORKING PRESSURE
700 PSIG 4826 KPA

MINIMUM CIRCUIT AMPS 25.2
MAX FUSE 40 A MAX CKT-BKR(X) 40 A

Short Circuit Current: 5kA rms, symmetrical, 230 U

MODEL NUMBER N4H448GKG101

SERIAL NUMBER E153400297

DATE OF MANUFACTURE AUG 2015

UL US LISTED
HEAT PUMP 2930

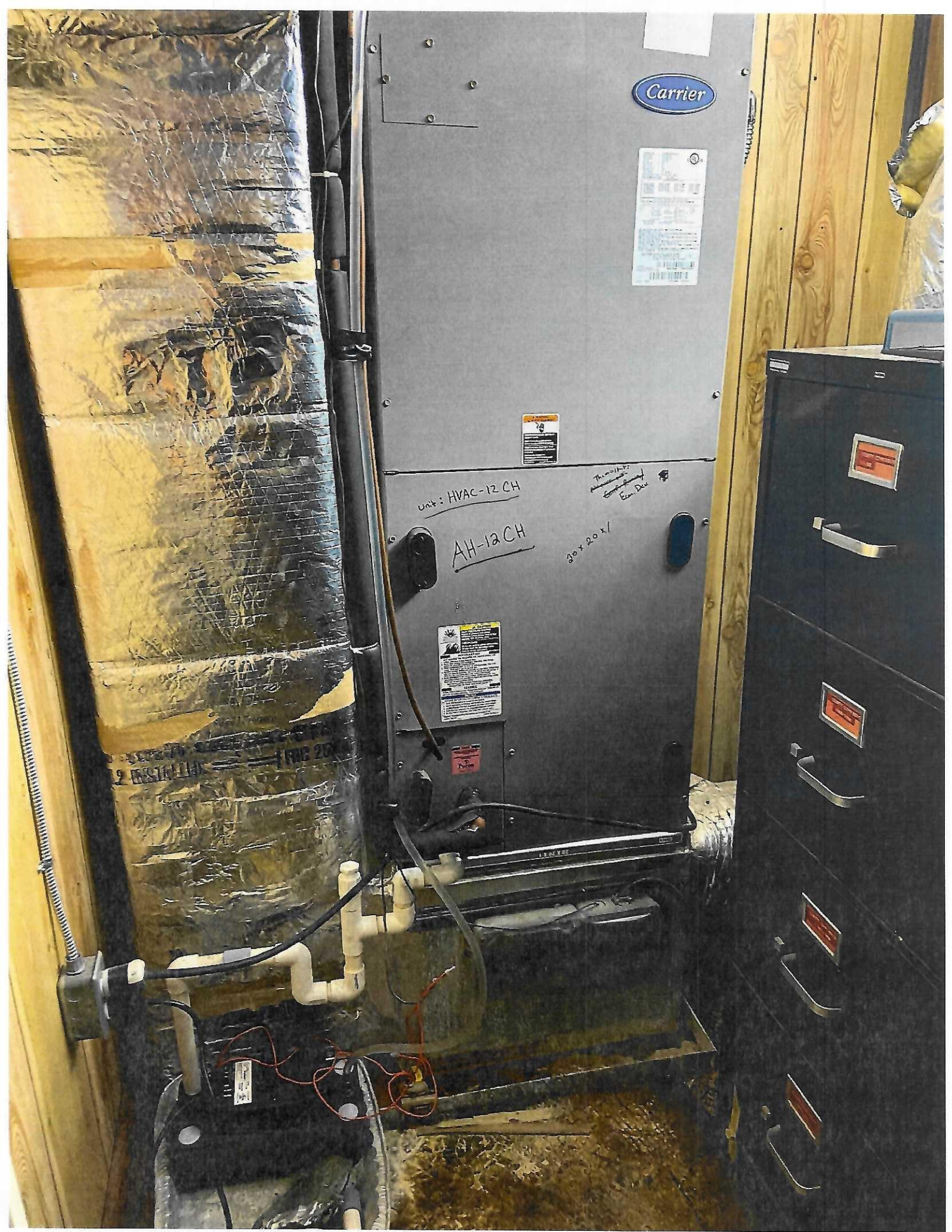
AHRI CERTIFIED
www.ahridirectory.org
Ductless Small HP
AHRI Standard 210/240
Certification applies only when the complete
system is listed with AHRI.

International Comfort Products 345244 1020
Levittown, PA 19051 U.S.A.

Mc Carthouse
HVAC-12



'98 &
'99
TAXES



Carrier

Technical specifications label with a barcode and various data points.

Warning label with a lightning bolt symbol and safety instructions.

Unit: HVAC-12 CH

AH-12 CH

30 x 20 x 1

Thermostat
Control Panel
Even Disc

Warning label with a lightning bolt symbol and safety instructions.

Red label with the word 'Danger'.

2 INSTALL 1 RIG 20



PRODUCT NO.	FY4ANF048T00AAAA
MODEL NO.	FY4ANF048
SERIAL NO.	2808A88700
VOLTS	208/230
MOTOR HP	3/4
MOTOR FLA	4.3
PHASE/HERTZ	1/60
TEST STATIC	.20 IN. W.C.
REFRIGERANT	410A DESIGN PSIG 450
DATE OF MANUFACTURING	JUL 2008



LISTED FAN COIL
UNIT 3A39

HVAC-12
Air Handler:

APPROVED ACCESSORIES

KFCEH**01H16	KFCEH**01H20	KFCEH**01N05	KFCEH**01C05
KFCEH**01N08	KFCEH**01C08	KFCEH**01N09	KFCEH**01N10
KFCEH**01C10	KFCEH**01F15	KFCEH**01C15	KFCEH**01315
KFCEH**01318	KFCEH**01F20	KFCEH**01C20	KFCEH**01F24
KFCEH**01F30			** - NUMERIC

ELECTRICAL INFORMATION FOR THIS UNIT

FOR FIELD INSTALLED ELECTRIC HEATERS APPLY ELECTRICAL INFORMATION
INSTALLER: APPLY THIS INFORMATION PLATE OVER SPACE INDICATED ON DOOR RATING PLATE. SEE INSTALLATION INSTRUCTIONS FOR 1" CLEARANCE REQUIREMENTS.

SINGLE	SUPPLY CIRCUIT	VOLTS	208/230	PHASE	1
L1/L2	HEATER AMPS	36.2/40.0	MIN. AMPACITY	53.8/58.5	
	SUPPLY CIRCUIT		MAX. OVERCURRENT PROTECTION	60/60	
	HEATER AMPS		MIN. AMPACITY		
	HEATER AMPS		MAX. OVERCURRENT PROTECTION		
HEAT PACKAGE			MIN. AMPACITY		
IN THIS UNIT	KFCEH0901N10		MAX. OVERCURRENT PROTECTION		
			LABEL P/N 324648-410 REV. B		

UNIT HAS INTEGRAL LIMIT CONTROL. MAX. OUTLET TEMP. 200F
 MOTOR THERMALLY PROTECTED.
 SEE INSTALLATION INSTRUCTIONS FOR SPECIFIC INSTALLATION REQUIREMENTS AND APPROVED ACCESSORY KIT INFORMATION.
 MAX. VOLTAGE TO GROUND OF SUPPLY CIRCUIT NOT TO EXCEED 120 VOLTS IF HEATER HAS CIRCUIT BREAKER CONTROL.
 COIL FOR COOLING ONLY EXCEPT WHEN INSTALLED AS PART OF A LISTED HEAT PUMP.
 APPROVED HEATERS MFG'D BY CAC/BDP, INDIANAPOLIS, IN
 CLEARANCE TO COMBUSTIBLE MATERIALS TO BE 0" FOR CASING, PLENUM AND DUCT FOR UNITS WITH 0 TO 18KW HEATERS.
 FOR UNITS WITH HEATERS 20KW AND ABOVE, CLEARANCE TO COMBUSTIBLE MATERIAL IS TO BE 0" TO CASING AND 1" FOR FIRST 36" OF PLENUM AND DUCT.

CAUTION

METERING DEVICE FOR THIS COIL MUST MATCH THAT SHOWN ON OUTDOOR UNIT RATING PLATE. REPLACE IF NECESSARY. THIS UNIT IS EQUIPPED WITH METERING DEVICE:

TXV



FY4ANF048T00AAAA

