

PROJECT LOCATION

VALENCIA COUNTY TRANSFER STATION, LOS LUNAS, NEW MEXICO

SURVEY INFORMATION

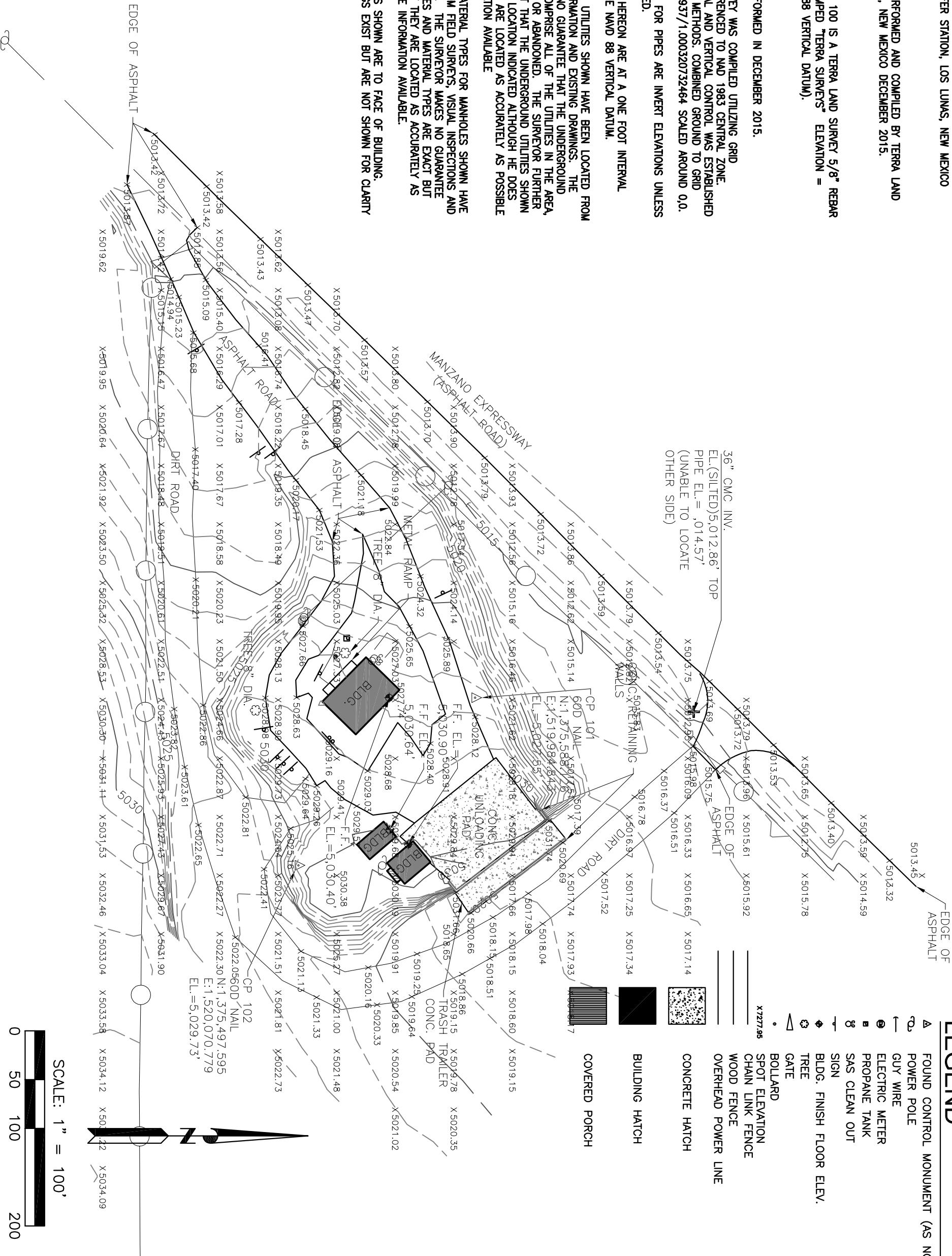
TOPOGRAPHIC SURVEY PERFORMED AND COMPILED BY TERRA LAND SURVEYS, LLC. CORRALES, NEW MEXICO DECEMBER 2015.

PROJECT BENCHMARK

PROJECT BENCHMARK CP 100 IS A TERRA LAND SURVEY 5/8" REBAR WITH ALUMINUM CAP STAMPED "TERRA SURVEYS" ELEVATION = 5,031.94 FEET (NAVD 1988 VERTICAL DATUM).

NOTES

1. FIELD SURVEY PERFORMED IN DECEMBER 2015.
2. TOPOGRAPHIC SURVEY WAS COMPILED UTILIZING GRID COORDINATES REFERENCED TO NAD 1983 CENTRAL ZONE. PRIMARY HORIZONTAL AND VERTICAL CONTROL WAS ESTABLISHED UTILIZING GPS RTK METHODS. COMBINED GROUND TO GRID FACTOR IS 0.99967937/1.000320732464 SCALED AROUND 0.0.
3. ELEVATIONS SHOWN FOR PIPES ARE INVERT ELEVATIONS UNLESS OTHERWISE SPECIFIED.
4. CONTOURS SHOWN HEREON ARE AT A ONE FOOT INTERVAL REFERENCED TO THE NAVD 88 VERTICAL DATUM.
5. THE UNDERGROUND UTILITIES SHOWN HAVE BEEN LOCATED FROM FIELD SURVEY INFORMATION AND EXISTING DRAWINGS. THE SURVEYOR MAKES NO GUARANTEE THAT THE UNDERGROUND UTILITIES SHOWN COMPRISE ALL OF THE UTILITIES IN THE AREA, EITHER IN SERVICE OR ABANDONED. THE SURVEYOR FURTHER DOES NOT WARRANT THAT THE UNDERGROUND UTILITIES SHOWN ARE IN THE EXACT LOCATION INDICATED ALTHOUGH HE DOES CERTIFY THAT THEY ARE LOCATED AS ACCURATELY AS POSSIBLE FROM THE INFORMATION AVAILABLE
6. PIPE SIZES AND MATERIAL TYPES FOR MANHOLES SHOWN HAVE BEEN LOCATED FROM FIELD SURVEYS, VISUAL INSPECTIONS AND EXISTING DRAWINGS. THE SURVEYOR MAKES NO GUARANTEE THAT THE PIPE SIZES AND MATERIAL TYPES ARE EXACT BUT DOES CERTIFY THAT THEY ARE LOCATED AS ACCURATELY AS POSSIBLE FROM THE INFORMATION AVAILABLE.
7. BUILDING LOCATIONS SHOWN ARE TO FACE OF BUILDING. BUILDING OVERHANGS EXIST BUT ARE NOT SHOWN FOR CLARITY PURPOSES.



LEGEND

- FOUND CONTROL MONUMENT (AS NOTED)
- POWER POLE
- GUY WIRE
- ELECTRIC METER
- PROPANE TANK
- SAS CLEAN OUT
- SIGN
- BLDG. FINISH FLOOR ELEV.
- TREE
- GATE
- BOLLARD
- SPOT ELEVATION
- CHAIN LINK FENCE
- WOOD FENCE
- OVERHEAD POWER LINE
- CONCRETE HATCH
- BUILDING HATCH
- COVERED PORCH

VALENCIA COUNTY TRANSFER STATION

DRAWING NUMBER



ADVISORY INSPECTION
& OPERATIONS CO LLC
Energy & Engineering

DESIGNED BY: J.S.

DRAWN BY: T.D.S.

CHECKED BY: J.S.

REVISION

BY DATE MARK